

SCANNED BY
PLANNING

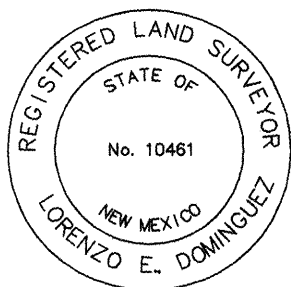
CITY OF ALBUQUERQUE
CONSTRUCTION PLANS
for

FAMILY DOLLAR
at
BRIDGE BOULEVARD
and
86th STREET

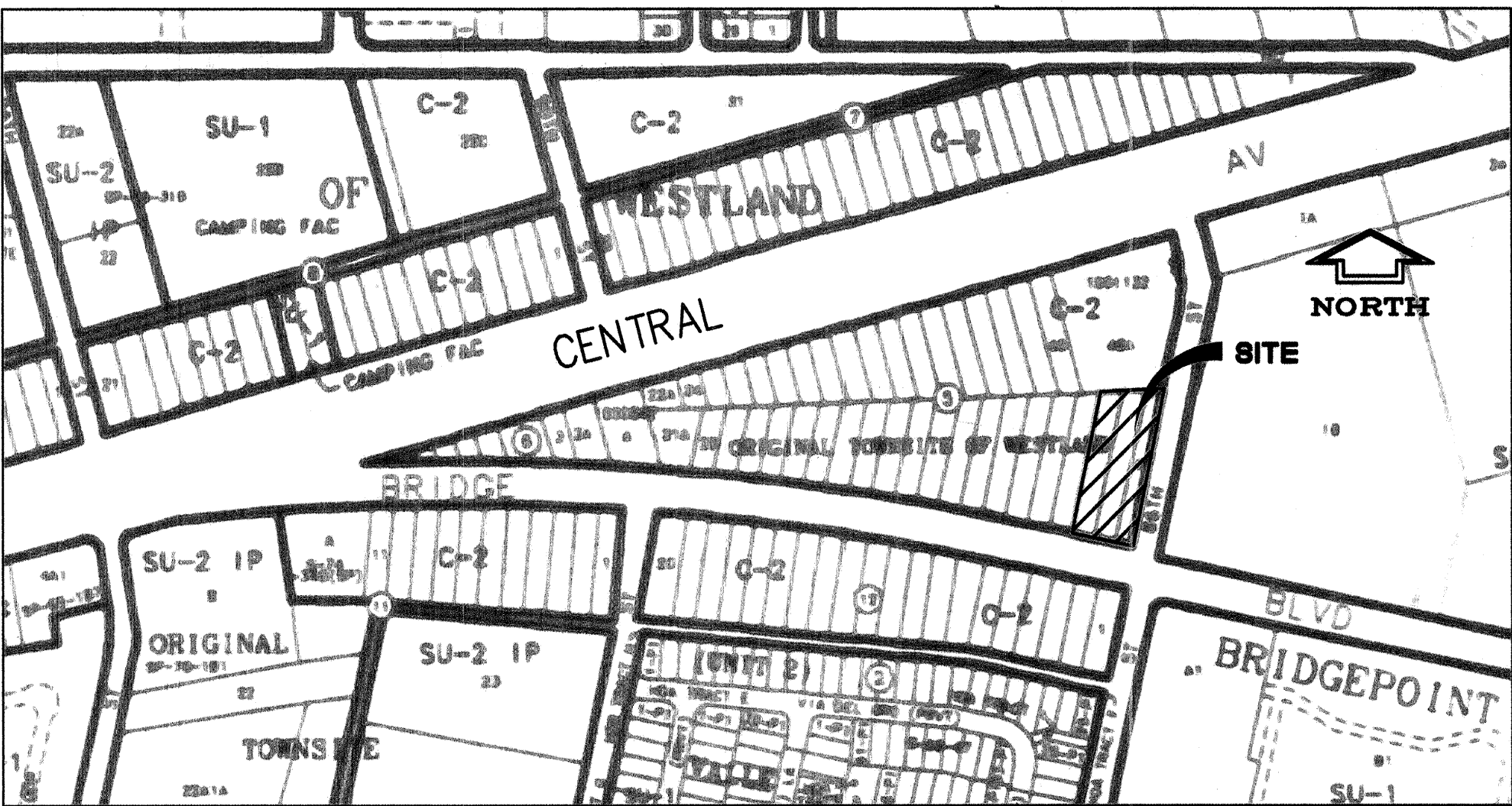
| SHEET No. | DESCRIPTION |
|-----------|---------------------------------------|
| 1 | TITLE SHEET |
| 2 | PLAT |
| 3 | PAVING DETAILS |
| 4 | BRIDGE BLVD. WEST PAVING IMPROVEMENTS |
| 5 | BRIDGE BLVD. PAVING IMPROVEMENTS |
| 6 | BRIDGE BLVD. EAST PAVING IMPROVEMENTS |
| 7 | 86th STREET PAVING PLAN AND PROFILE |
| 8 | BRIDGE ROADWAY PLAN AND PROFILE |
| 9 | SIGNING AND MARKING |
| 10 | MASTER UTILITY PLAN |
| 11 | WATER AND SEWER IMPROVEMENTS |
| 12 | 86th STREET ROADWAY PLAN AND PROFILE |
| 13 | BRIDGE BRIDGE BLVD. STORM DRAIN IMP. |
| 14 | 86th STREET STORM DRAIN IMP |

I Lorenzo E. Dominguez PS 10461, collected survey data for the preparation of as-constructed record drawings for this project.

Lorenzo E. Dominguez 2/5/07
Lorenzo E. Dominguez PS 10461



BINGHAM ENGINEERING
ALBUQUERQUE, NEW MEXICO
505 797 4699

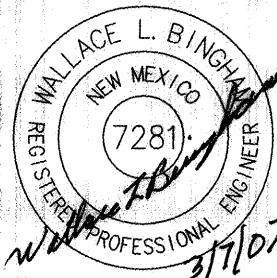
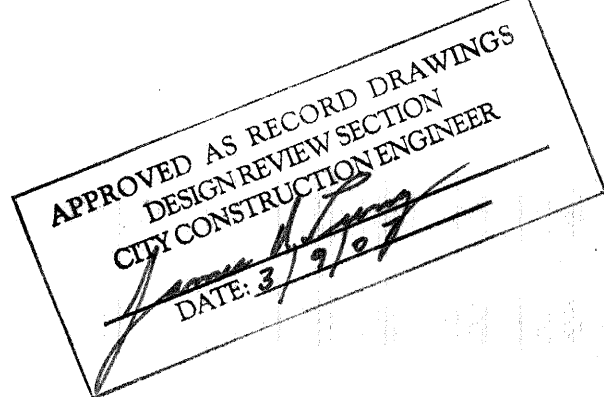


VICINITY MAP

K-9

NOTICE TO CONTRACTOR

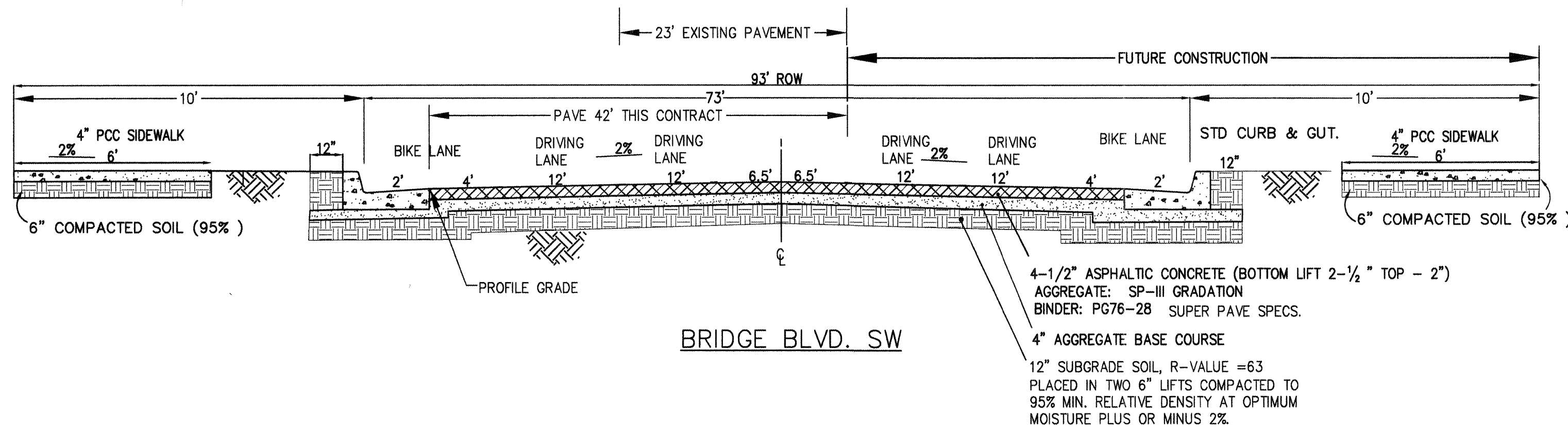
- EXCAVATION/CONSTRUCTION PERMIT WILL BE REQUIRED BEFORE BEGINNING ANY WORK WITHIN THE CITY RIGHT-OF-WAY.
- ALL WORK DETAILED ON THESE PLANS TO BE PERFORMED UNDER CONTRACT SHALL EXCEPT AS OTHERWISE STATED OR PROVIDED FOR HEREIN, BE CONSTRUCTED IN ACCORDANCE WITH THE CITY OF ALBUQUERQUE STANDARD SPECIFICATIONS FOR PUBLIC WORKS CONSTRUCTION.
- TWO WORKING DAYS PRIOR TO ANY EXCAVATION, THE CONTRACTOR MUST CONTACT NEW MEXICO ONE-CALL SYSTEM (260 1990) LOCATION MARKING FOR ALL UTILITIES.
- PRIOR TO CONSTRUCTION, THE CONTRACTOR SHALL EXCAVATE AND VERIFY THE EXISTENCE AND LOCATION OF ALL OBSTRUCTIONS. SHOULD A CONFLICT EXIST, THE CONTRACTOR SHALL NOTIFY THE ENGINEER IMMEDIATELY SO THE CONFLICT CAN BE MITIGATED WITH A MINIMUM OF DELAY.
- FIVE (5) WORKING DAYS PRIOR TO COMMENCING CONSTRUCTION, THE CONTRACTOR SHALL SUBMIT A CONSTRUCTION SCHEDULE TO THE ENGINEER.
- AT LEAST TWO DAYS BEFORE CONSTRUCTION BEGINS, THE CONTRACTOR SHALL OBTAIN A BARRICADING PERMIT FROM THE CONSTRUCTION COORDINATION DIVISION. CONTRACTOR SHALL NOTIFY THE CONSTRUCTION COORDINATION ENGINEER (924 3400) PRIOR TO OCCUPYING AN INTERSECTION, REFER TO SECTION 19 OF THE GENERAL CONDITIONS OF THE STANDARD SPECIFICATIONS.
- ANY WORK AFFECTING ARTERIAL STREETS REQUIRES TWENTY-FOUR HOUR CONSTRUCTION.
- ANY STREET STRIPING ALTERED OR DESTROYED SHALL BE REPLACED WITH PLASTIC, REFLECTORIZED PAVEMENT MARKING BY CONTRACTOR TO THE SAME LOCATION AS WAS EXISTING. OR AS INDICATED BY THIS PLAN SET.
- CONTRACTOR SHALL NOTIFY THE ENGINEER NOT LESS THAN SEVEN (7) DAYS PRIOR TO BEGINNING WORK ON THE SITE SO THAT THE CITY SURVEY MAY TAKE NECESSARY MEASURES TO PRESERVE ANY CITY SURVEY MONUMENTATION THAT MAY BE AFFECTED. THE CONTRACTOR SHALL NOT DISTURB ANY PERMANENT SURVEY MONUMENT WITHOUT THE CONSENT OF THE CITY SURVEYOR AND SHALL NOTIFY THE CITY SURVEYOR AND BEAR THE EXPENSE OF REPLACING ANY THAT MAY BE DISTURBED WITHOUT PERMISSION. REPLACEMENT SHALL BE DONE ONLY BY THE CITY SURVEYOR. WHEN A CHANGE IS MADE IN THE FINISHED ELEVATIONS OF THE PAVEMENT OF ANY ROADWAY IN WHICH A PERMANENT SURVEY MONUMENT IS LOCATED, THE CONTRACTOR SHALL AT HIS OWN EXPENSE, ADJUST THE MONUMENT COVER TO THE NEW GRADE UNLESS OTHERWISE SPECIFIED. SECTION 4.4 OF THE GENERAL CONDITIONS OF THE STANDARD SPECIFICATIONS.
- THE CONTRACTOR SHALL RECORD DATA ON ALL UTILITY LINES AND ACCESSORIES AS REQUIRED BY THE CITY OF ALBUQUERQUE UTILITIES SECTION FOR THE PREPARATION OF "AS CONSTRUCTED DRAWINGS" CONTRACTOR SHALL NOT COVER UTILITY LINES AND ACCESSORIES UNTIL ALL DATA HAS BEEN RECORDED.
- THE CONTRACTOR SHALL MAINTAIN A GRAFFITI-FREE WORK SITE. THE CONTRACTOR SHALL PROMPTLY REMOVE ANY GRAFFITI FROM WALLS, EQUIPMENT, ETC. WHETHER PERMANENT OR TEMPORARY.
- FOR STORM DRAIN CONSTRUCTION: R.C. PIPE JOINTS SHALL NOT BE GROUTED PRIOR TO FINAL INSPECTION. IF IT IS DETERMINED THAT SOME JOINTS MUST BE GROUTED FOR FINAL ACCEPTANCE OF THE CONSTRUCTION, ONLY THOSE JOINTS WILL BE GROUTED.



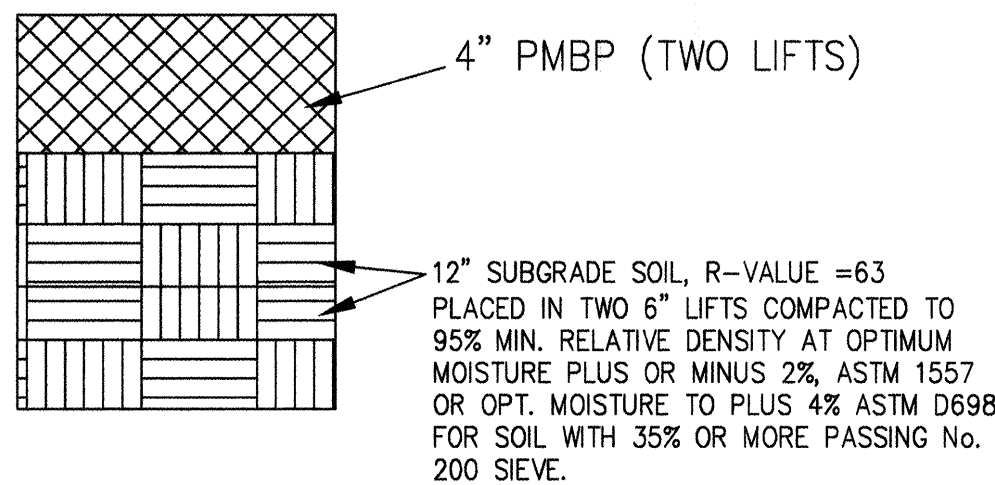
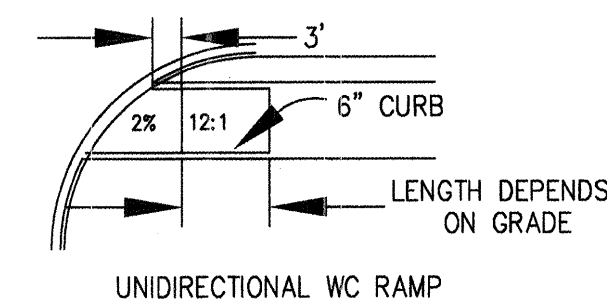
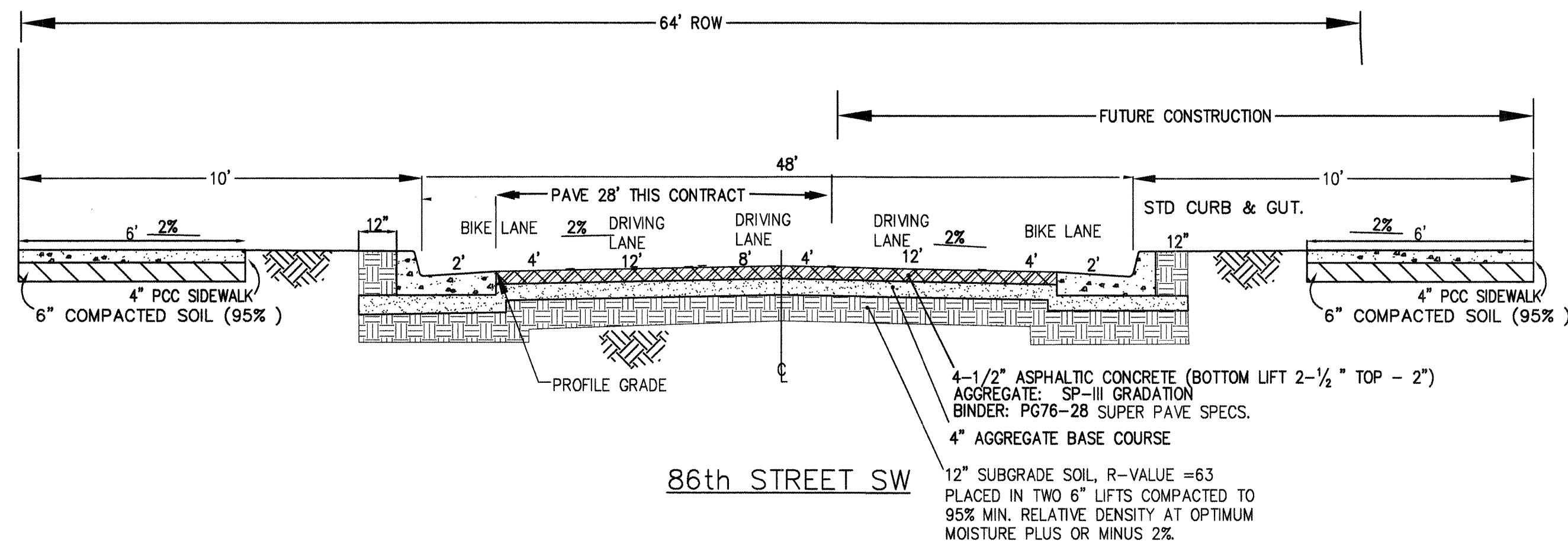
I, Wallace L. Bingham P.E. of the firm of BINGHAM ENGINEERING a Professional Engineer, registered by the State of New Mexico, do hereby certify, to the best of my knowledge and belief that the infrastructure installed as part of this project has been inspected by me or a qualified person under my direct supervision and has been constructed in accordance with the plans and specifications approved by the City Engineer and that the original design intent of the approved plans has been met, except as noted by me on the as-built construction drawings. This certification is based on site inspections by me or personnel under my direction and survey information provided by a NM Registered Surveyor.

DRB 1002992

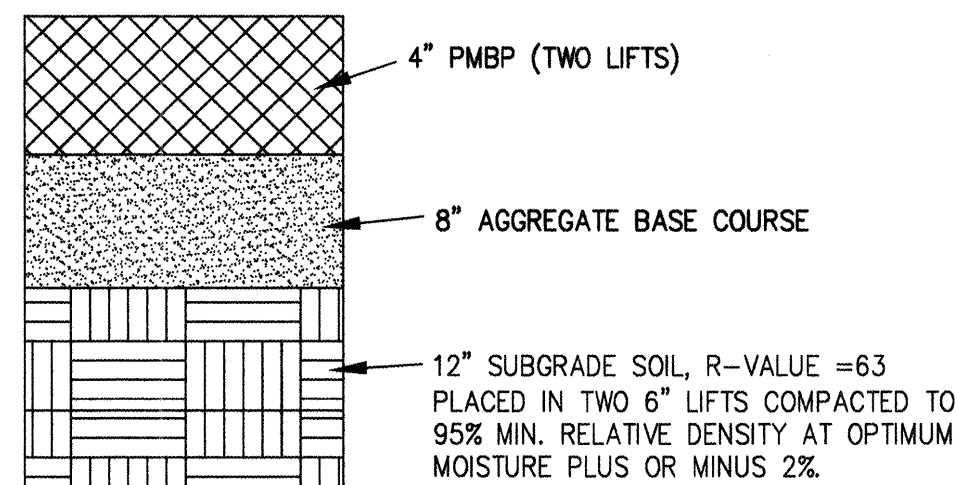
| REV. | SHEETS | CITY ENGINEER | DATE | USER DEPARTMENT | DATE | USER DEPARTMENT | DATE |
|-----------------------------|--------|------------------|--------------------|-----------------|---------------------------|-----------------|------|
| ENGINEERS STAMP & SIGNATURE | | APPROVALS | ENGINEER | DATE | ***** | | |
| | | DRC Chairman | <i>[Signature]</i> | 2-7-04 | APPROVED FOR CONSTRUCTION | | |
| | | Transportation | <i>[Signature]</i> | 12/7/04 | | | |
| | | Water/Wastewater | <i>[Signature]</i> | 12/7/04 | | | |
| | | Hydrology | <i>[Signature]</i> | 12/7/04 | | | |
| | | C.I.P. | <i>[Signature]</i> | 12/7/04 | | | |
| | | Contr. Coord. | <i>[Signature]</i> | 12-7-04 | | | |
| | | City Project No. | | 735682 | | SHEET 1 of 14 | |



FLOW LINE = PROFILE ELEV - 0.125'
TOP OF CURB = PROFILE GRADE + 0.54'



TEMPORARY PAVEMENT
PER DWG. 2415B



DRIVEWAY PAVEMENT

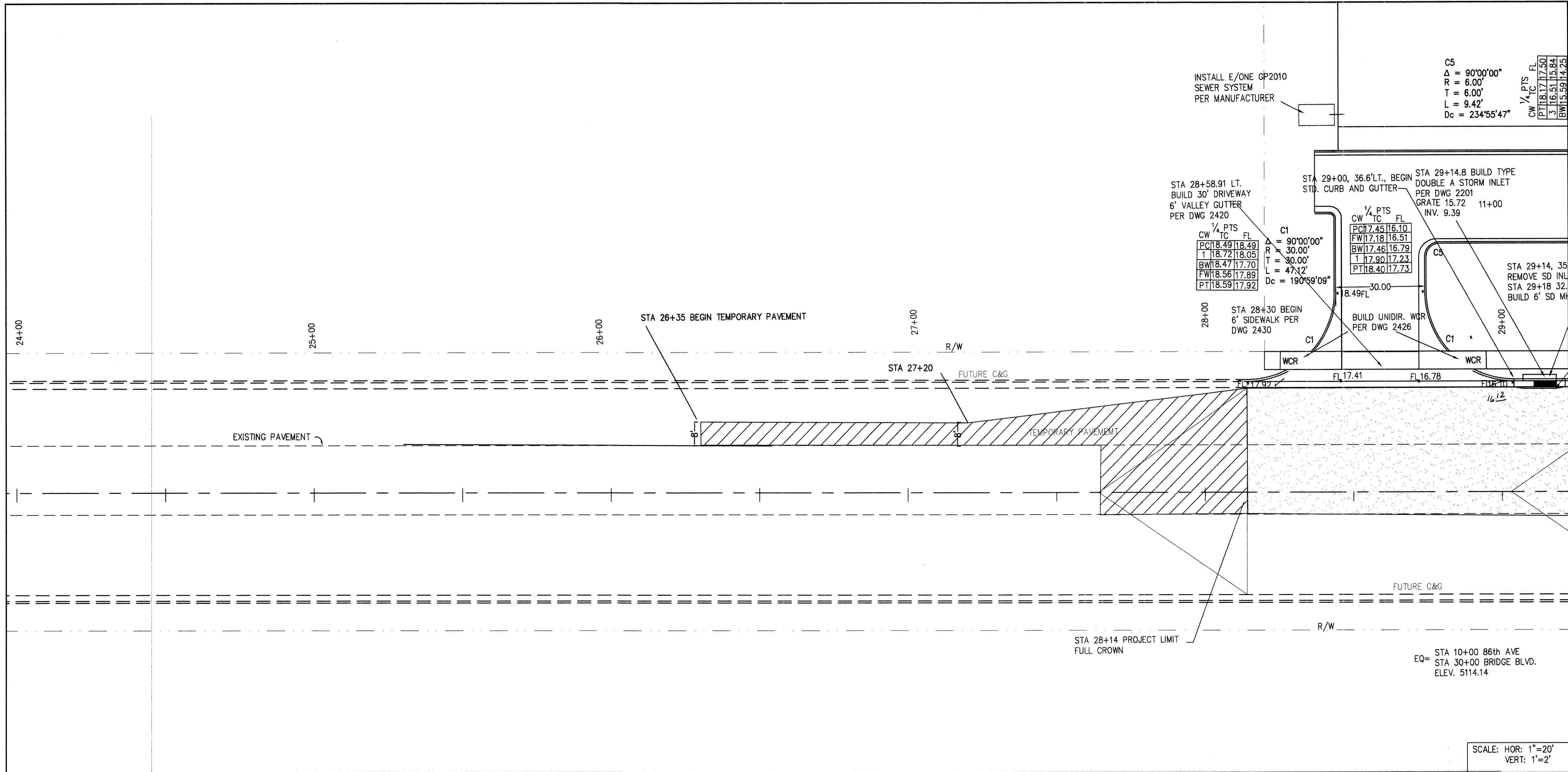
I, Wallace L. Bingham P.E. of the firm of BINGHAM ENGINEERING, a Professional Engineer, registered by the State of New Mexico, hereby certify, to the best of my knowledge and belief that the infrastructure installed as part of this project has been inspected by me or a qualified person under my direct supervision and has been constructed in accordance with the plans and specifications approved by the City Engineer and that the original design intent of the approved plans has been met, except as noted by me on the as-built construction drawings. This certification is based on site inspections by me or personnel under my direction and survey information provided by a NM Registered Surveyor.

| SURVEY INFORMATION | | BENCH MARKS | | AS BUILT INFORMATION | |
|--------------------|--|--------------------|--|---------------------------------|--|
| FIELD NOTES | | ACS STATION 7 - K9 | | CONTRACTOR J.H. Everts & Sons | |
| NO. | | DATE | | WORK | |
| 1 | | COMMUNITY SCIENCES | | CHECKED BY J.H. Everts | |
| | | | | FIELD ACCEPTANCE BY J.H. Everts | |
| | | | | FIELD CORRECTION BY J.H. Everts | |
| | | | | DRAWINGS | |
| | | | | CORRECTED BY J.H. Everts | |
| | | | | MICROFILM INFORMATION | |
| | | | | RECORD BY J.H. Everts | |
| | | | | NO. | |



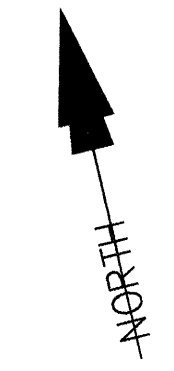
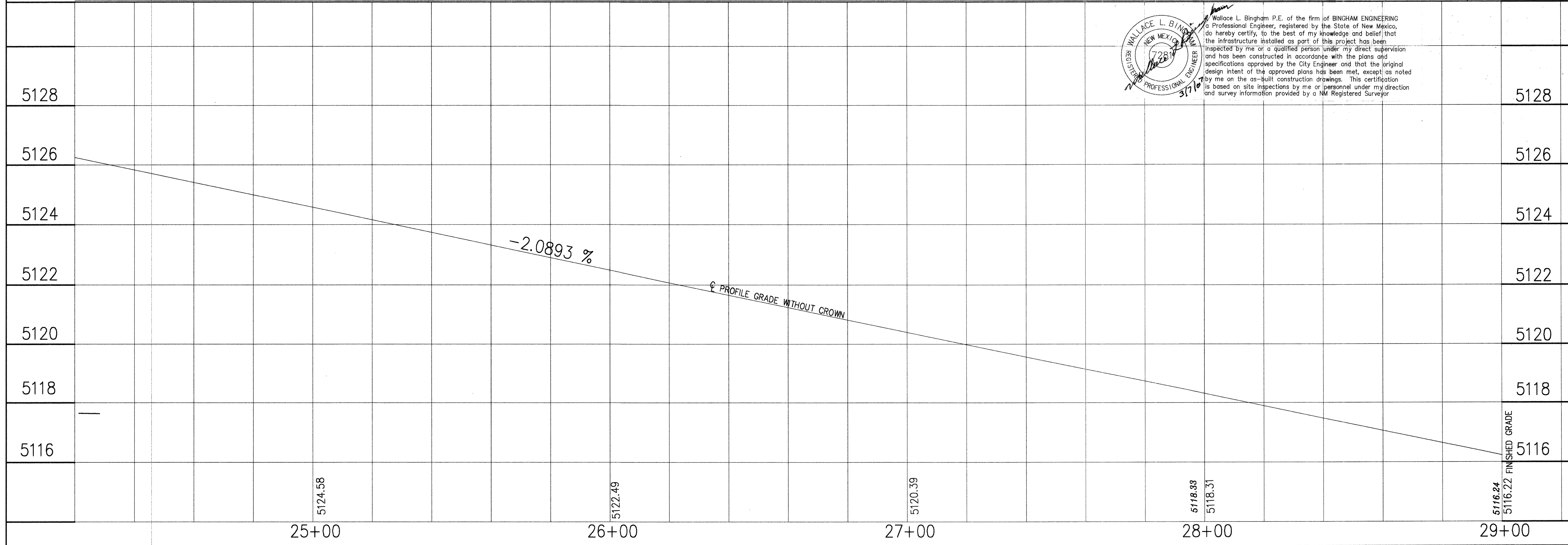
| | | | |
|---|---|------------|------------|
| CITY OF ALBUQUERQUE PUBLIC WORKS DEPARTMENT ENGINEERING DEVELOPMENT GROUP | | | |
| TITLE: PAVING DETAILS | | | |
| Design Review Committee | City Engineer Approval | Mo./Day/Yr | Mo./Day/Yr |
| APPROVED DEC - 7 2004 DESIGN REVIEW COMMITTEE | APPROVED DEC - 7 2004 CITY ENGINEER | | |
| City Project No. 735682 | Zone Map No. K9 | Sheet | 3 of 14 |

BINGHAM ENGINEERING
ALBUQUERQUE, NEW MEXICO
505 797 4689



NOTE:
PLACE TEMPORARY PAVEMENT AS SHOWN ON THE PLANS AND TO CREATE EASY RIDING CONNECTIONS TO BRIDGE BLVD. AND 86th STREET.

NOTE:
THE LOCATION OF ALL EXISTING UTILITIES SHOWN WERE OBTAINED FROM RESEARCH, AS-BUILTS, SURVEYS AND INFORMATION PROVIDED BY OTHERS. IT SHALL BE THE RESPONSIBILITY OF THE CONTRACTOR TO CONDUCT HIS OWN RESEARCH TO SATISFY HIS NEED TO KNOW THE PRESENCE OF UNSEEN UTILITIES, AND OTHER OBSTRUCTIONS PRIOR TO COMMENCING CONSTRUCTION. ANY CHANGES WILL REQUIRE A CHANGE ORDER.



BINGHAM ENGINEERING
ALBUQUERQUE, NEW MEXICO
505 797 4699

| | | | |
|---|---|-----------------|---------------|
| CITY OF ALBUQUERQUE PUBLIC WORKS DEPARTMENT ENGINEERING DEVELOPMENT GROUP | | | |
| TITLE: BRIDGE BLVD. W PAVING IMPROVEMENTS | | | |
| Design Review Committee | City Engineer Approval | Mo./Day/Yr | Mo./Day/Yr |
| APPROVED DEC - 7 2004 DESIGN REVIEW COMMITTEE | APPROVED DEC - 7 2004 CITY ENGINEER | | |
| City Project No. 735682 | | Zone Map No. K9 | Sheet 4 of 14 |

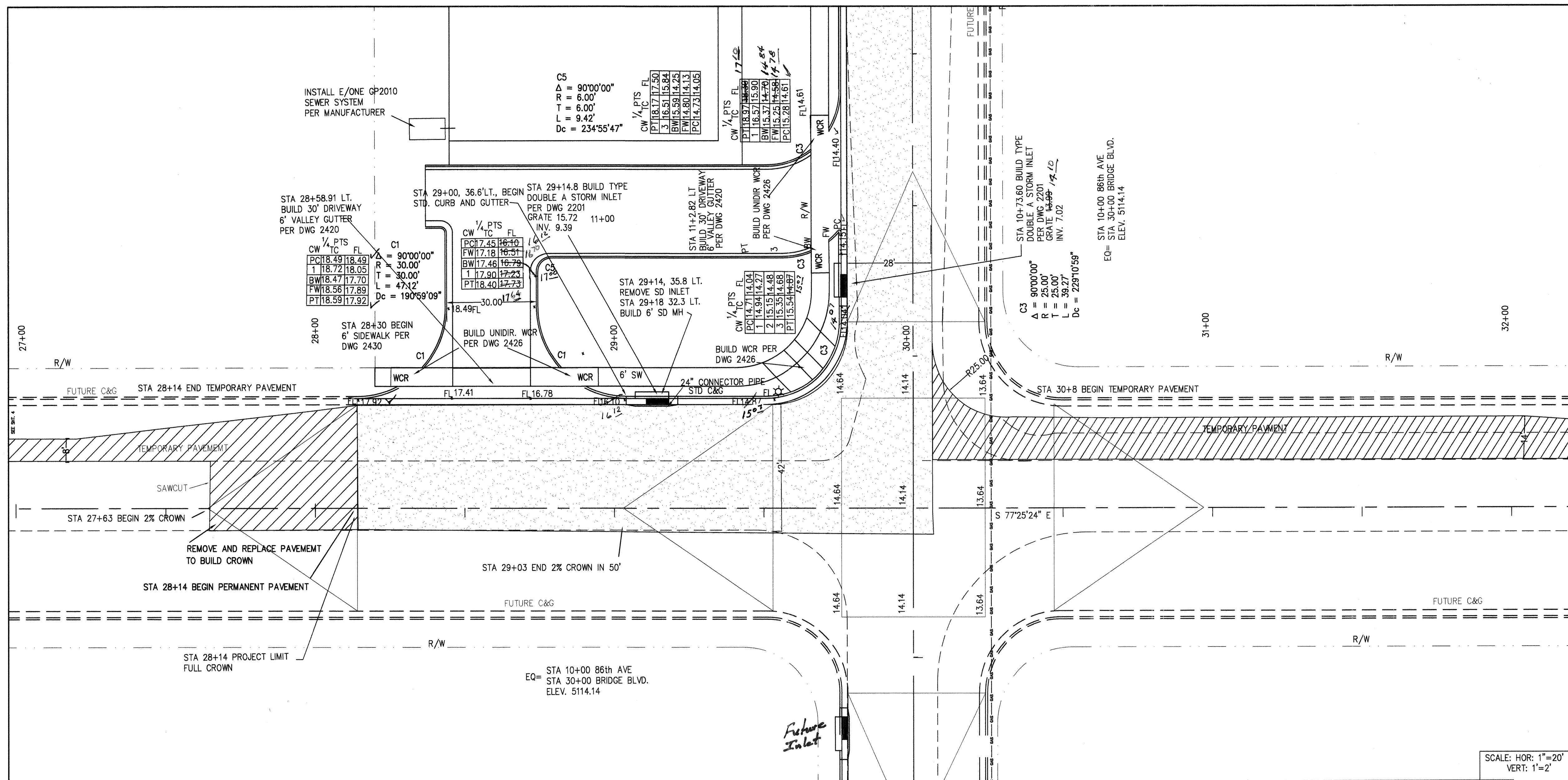
| SURVEY INFORMATION | | BENCH MARKS | | AS BUILT INFORMATION | |
|--------------------|--------------------|-------------|---------------------------|----------------------|------|
| NO. | BY | DATE | NO. | DATE | DATE |
| 1 | COMMUNITY SCIENCES | | ACS STATION 7 - K9 | | |
| | | | NAD 1927 NMSP C | | |
| | | | X=355815.77 | | |
| | | | GRID TO GROUND 0.99967820 | | |
| | | | X=1502101.6571 | | |
| | | | Y=1534274.4482 | | |
| | | | Da = 00'16'37" | | |
| | | | ELEV. (NAD 1929) 5137.92 | | |

ENGINEER'S SEAL

WALLACE L. BINGHAM
NEW MEXICO
7281
REGISTERED PROFESSIONAL ENGINEER

12/14/04

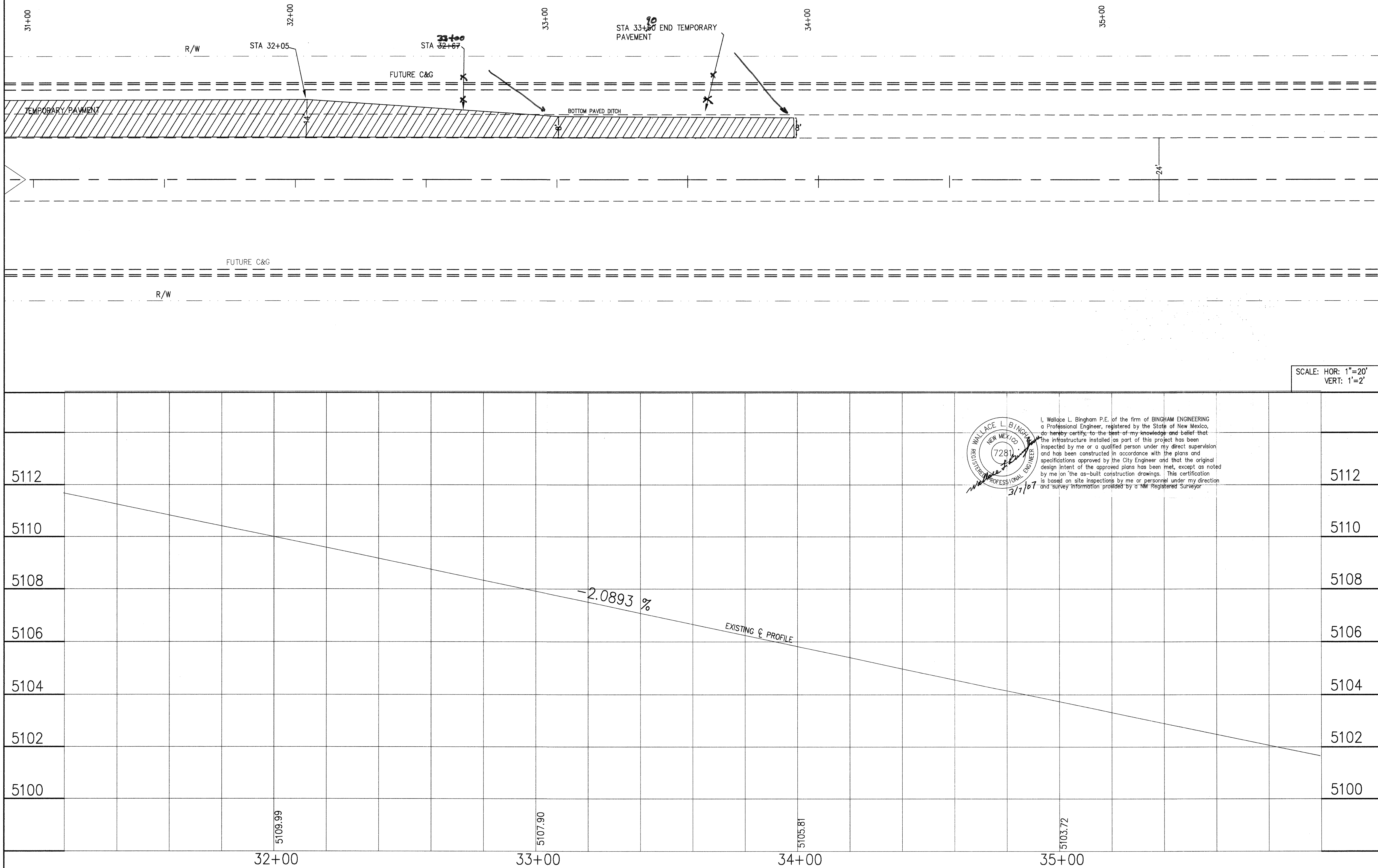
| | |
|-----------|----|
| REMARKS | BY |
| REVISIONS | |
| DESIGN | |
| DATE 9/04 | |
| DATE 9/04 | |
| DATE 9/04 | |



NOTE:
PLACE TEMPORARY PAVEMENT AS SHOWN ON THE PLANS
AND TO CREATE EASY RIDING CONNECTIONS TO BRIDGE
BLVD. AND 86th STREET.

NOTE:
THE LOCATION OF ALL EXISTING UTILITIES SHOWN WERE OBTAINED FROM RESEARCH, AS-BUILTS, SURVEYS AND INFORMATION PROVIDED BY OTHERS. IT SHALL BE THE RESPONSIBILITY OF THE CONTRACTOR TO CONDUCT HIS OWN RESEARCH TO SATISFY HIS NEED TO KNOW THE PRESENCE OF UNSEEN UTILITIES, AND OTHER OBSTRUCTIONS PRIOR TO COMMENCING CONSTRUCTION. ANY CHANGES WILL REQUIRE A CHANGE ORDER.

[illegible]



NOTE:
PLACE TEMPORARY PAVEMENT AS SHOWN ON THE PLANS
AND TO CREATE EASY RIDING CONNECTIONS TO BRIDGE
BLVD. AND 86th STREET.

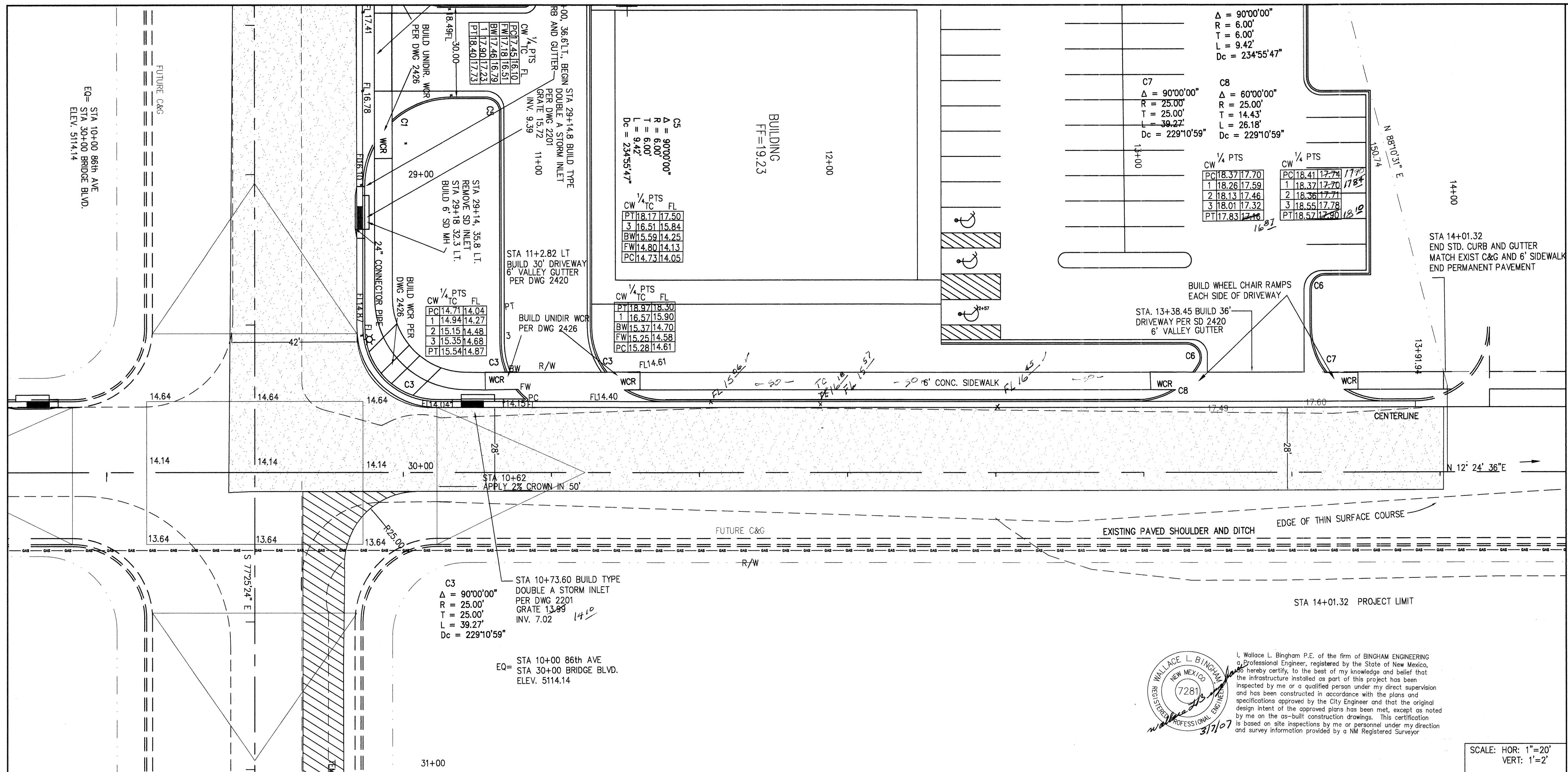
NOTE:
THE LOCATION OF ALL EXISTING UTILITIES SHOWN WERE
OBTAINED FROM RESEARCH, AS-BUILTS, SURVEYS AND
INFORMATION PROVIDED BY OTHERS. IT SHALL BE THE
RESPONSIBILITY OF THE CONTRACTOR TO CONDUCT HIS OWN
RESEARCH TO SATISFY HIS NEED TO KNOW THE PRESENCE
OF UNSEEN UTILITIES, AND OTHER OBSTRUCTIONS PRIOR TO
COMMENCING CONSTRUCTION. ANY CHANGES WILL REQUIRE
A CHANGE ORDER.

BINGHAM ENGINEERING
ALBUQUERQUE, NEW MEXICO
505 797 4699

| | | | |
|---|--|-----------------|---------------|
| CITY OF ALBUQUERQUE PUBLIC WORKS DEPARTMENT ENGINEERING DEVELOPMENT GROUP | | | |
| TITLE: BRIDGE BLVD. E. PAVING IMPROVEMENTS | | | |
| Design Review Committee | City Engineer Approval | Mo./Day/Yr | Mo./Day/Yr |
| APPROVED DEC - 7 2004 DESIGN REVIEW COMMITTEE | APPROVED DEC - 7 2004 CITY ENGINEER | | |
| City Project No. 735682 | | Zone Map No. K9 | Sheet 6 of 14 |


| SURVEY INFORMATION | | BENCH MARKS | | AS BUILT INFORMATION | |
|--------------------|--------------------|-------------|-------------------------------|----------------------|---------|
| NO. | BY | DATE | ACS STATION 7 - K9 | CONTRACTOR | DATE |
| 1 | COMMUNITY SCIENCES | | NAD 1927 NMSP C | WALLACE L. BINGHAM | 12/1/04 |
| | | | X=355815.77 Y=1482842.09 | DESIGNED BY | DATE |
| | | | GRID TO GROUND 0.99967820 | ASSISTANCE BY | DATE |
| | | | X=1502101.6571 Y=1534274.4462 | FIELD ENGINEER | DATE |
| | | | Dg = 00'16.37" | CHECKED BY | DATE |
| | | | ELEV. (NAD 1928) 5137.92 | RECORDED BY | DATE |

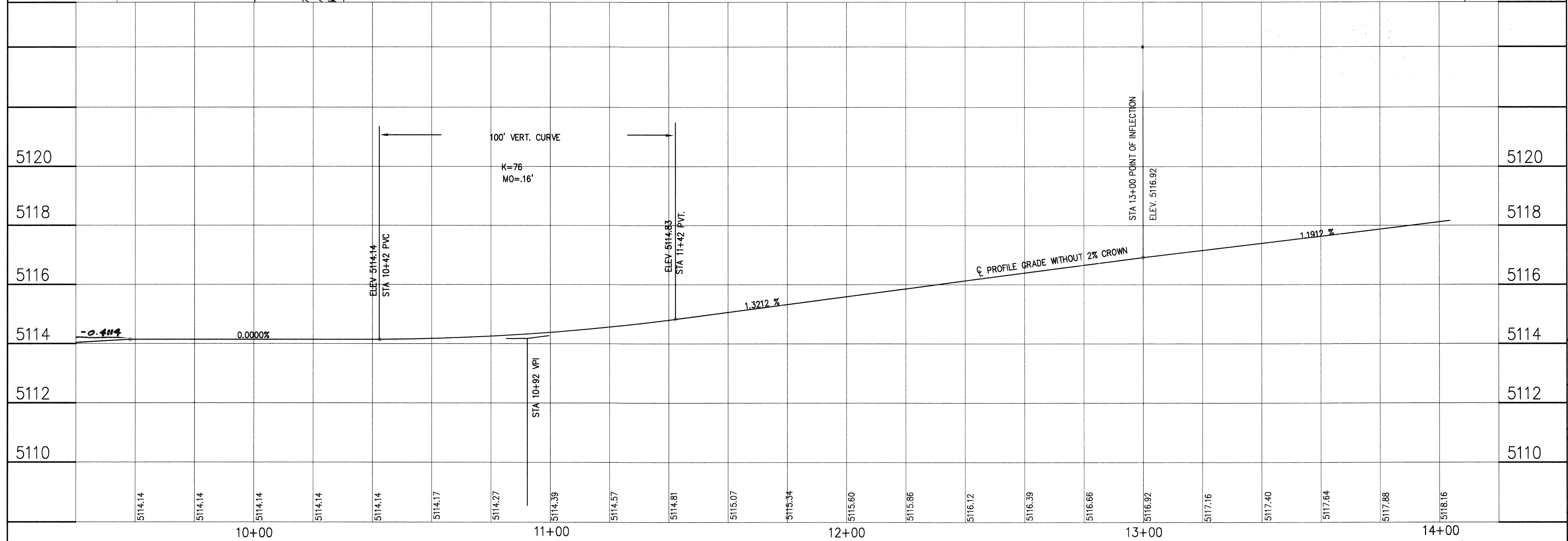
SCANNED BY
PLANNING

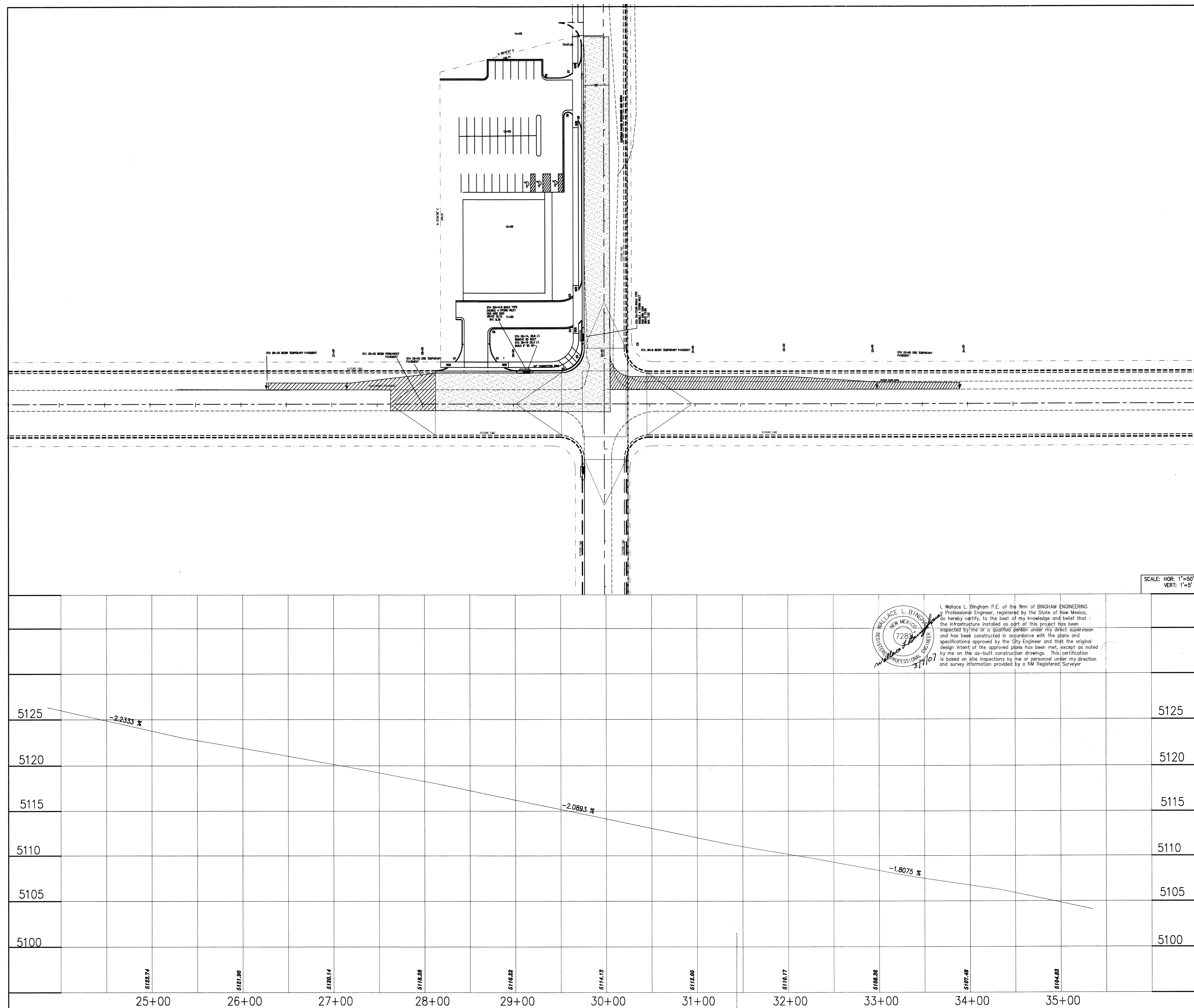


NOTE:
PLACE TEMPORARY PAVEMENT AS SHOWN ON THE PLANS
AND TO CREATE EASY RIDING CONNECTIONS TO BRIDGE
BLVD. AND 86th STREET.

NOTE:
THE LOCATION OF ALL EXISTING UTILITIES SHOWN WERE OBTAINED FROM RESEARCH, AS-BUILTS, SURVEYS AND INFORMATION PROVIDED BY OTHERS. IT SHALL BE THE RESPONSIBILITY OF THE CONTRACTOR TO CONDUCT HIS OWN RESEARCH TO SATISFY HIS NEED TO KNOW THE PRESENCE OF UNSEEN UTILITIES, AND OTHER OBSTRUCTIONS PRIOR TO COMMENCING CONSTRUCTION. ANY CHANGES WILL REQUIRE A CHANGE ORDER.

| | | | | | | | | | | | | | | | | | | | |
|---|--|--|--|--|--|--|--|--|--|--|--|--|--|--|--|--|--|--|--|
| <div style="display: flex; justify-content: space-between;"> <div> <p>ENGINEER'S SEAL</p>  </div> <div> <p>AS BUILT INFORMATION</p> <p><i>Light Earth & Asphalt</i></p> </div> </div> | | | | | | | | | | <p>CONTRACTOR <i>W.H. Earth & Asphalt</i></p> <p>WORK ORDERED BY <i>Pre-Et's Inc.</i></p> <p>INSTRUCTIONS BY <i>W.H. Bingham</i></p> <p>FIELD EXPLANATION BY <i>W.H. Bingham</i></p> <p>REVISIONS BY <i>W.H. Bingham</i></p> <p>RECORDED BY <i>W.H. Bingham</i></p> <p>NO.</p> | | | | | | | | | |
| <p>ENGINEER'S SEAL</p> | | | | | | | | | | <p>ACS STATION "SANDBERN"</p> <p>NAD 1927 NMSP C</p> <p>X=361854.29 Y=1534209.29</p> <p>NAD 1983 NMSP C CORPSCON</p> <p>X=1502101.6571 Y=1534274.4482</p> <p>CONVERGENCE 16" 01.4" (1983)</p> <p>COMB SCALE FACTOR = 0.99966079</p> <p>ELEV. (NAVD 1929) 5456.92 (2ND ORD.)</p> | | | | | | | | | |
| <p>FIELD NOTES</p> <p>NO. BY DATE</p> <p>1 COMMUNITY SCIENCES</p> | | | | | | | | | | <p>REMARKS</p> <p>BY</p> <p>DESIGNED BY WLB DATE 9/04</p> <p>DRAWN BY WLB DATE 9/04</p> <p>CHECKED BY WLB/LC DATE 9/04</p> | | | | | | | | | |
| <p>NO. DATE</p> | | | | | | | | | | <p>REVISIONS</p> <p>DESIGN</p> | | | | | | | | | |
| <p>Mo./Day/Yr</p> | | | | | | | | | | <p>Mo./Day/Yr</p> | | | | | | | | | |
| <p>Sheet</p> | | | | | | | | | | <p>7 of 14</p> | | | | | | | | | |





BINGHAM ENGINEERING
ALBUQUERQUE, NEW MEXICO
505 797 4699

CITY OF ALBUQUERQUE
PUBLIC WORKS DEPARTMENT
ENGINEERING DEVELOPMENT GROUP

TITLE: **BRIDGE STREET GRADE**

Design Review Committee

APPROVED

DEC - 7 2004

DESIGN
REVIEW COMMITTEE

City Engineer Approval

APPROVED

DEC - 7 2004

CITY ENGINEER

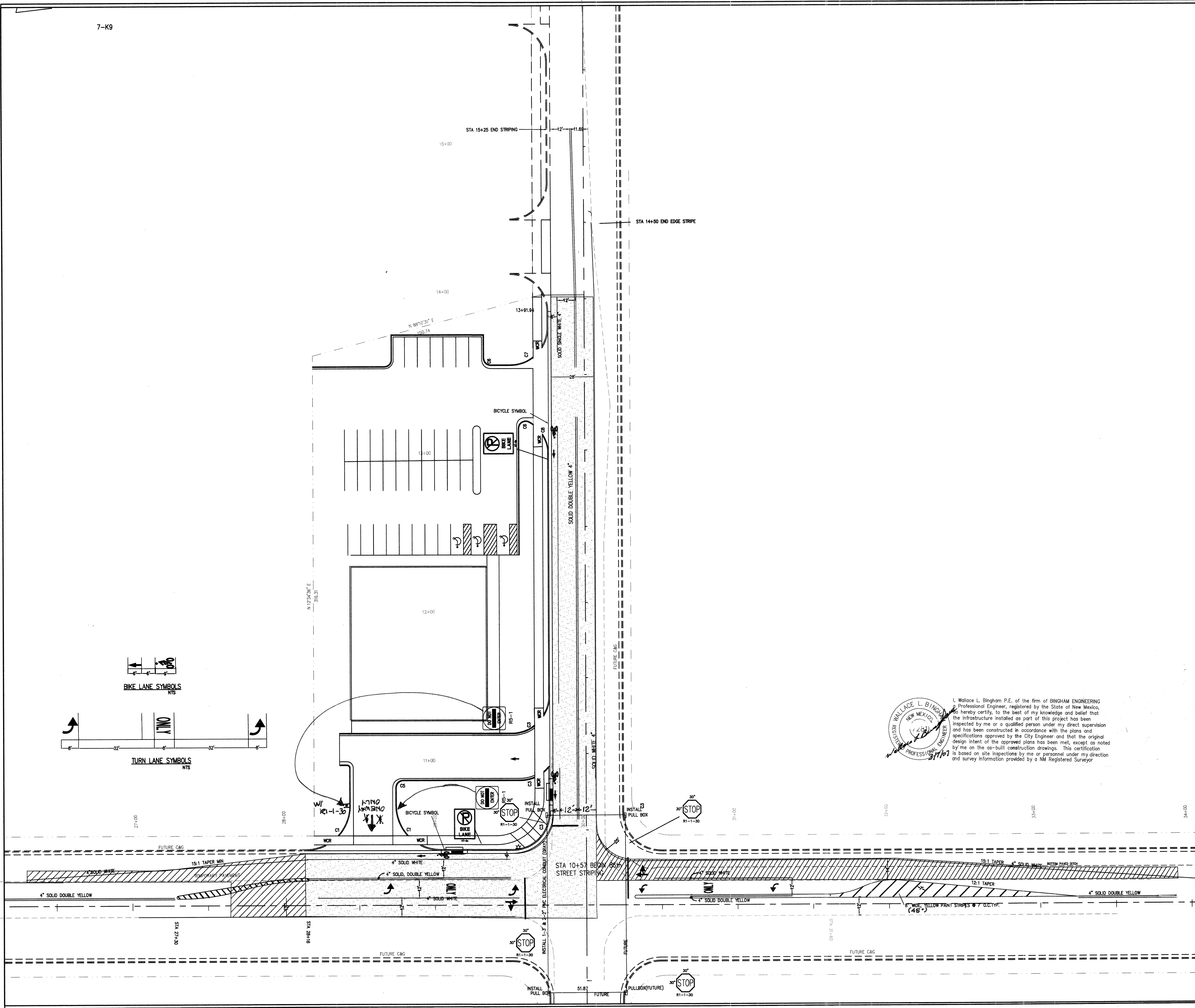
City Project No. 735682

Zone Map N
K9

Sheet 8 of 14

[illegible]

7-K9



NOTE:
ALL SIGNING AND MARKING SHALL CONFORM TO
THE MUTCD. ALL MARKING PAINT SHALL BE REFLECTORIZED
CONTACT THE TRAFFIC OPERATIONS SECTION AT
PINO YARDS PRIOR TO STRIPING
ALL TRAFFIC LANES ARE A MINIMUM OF 12 FEET.

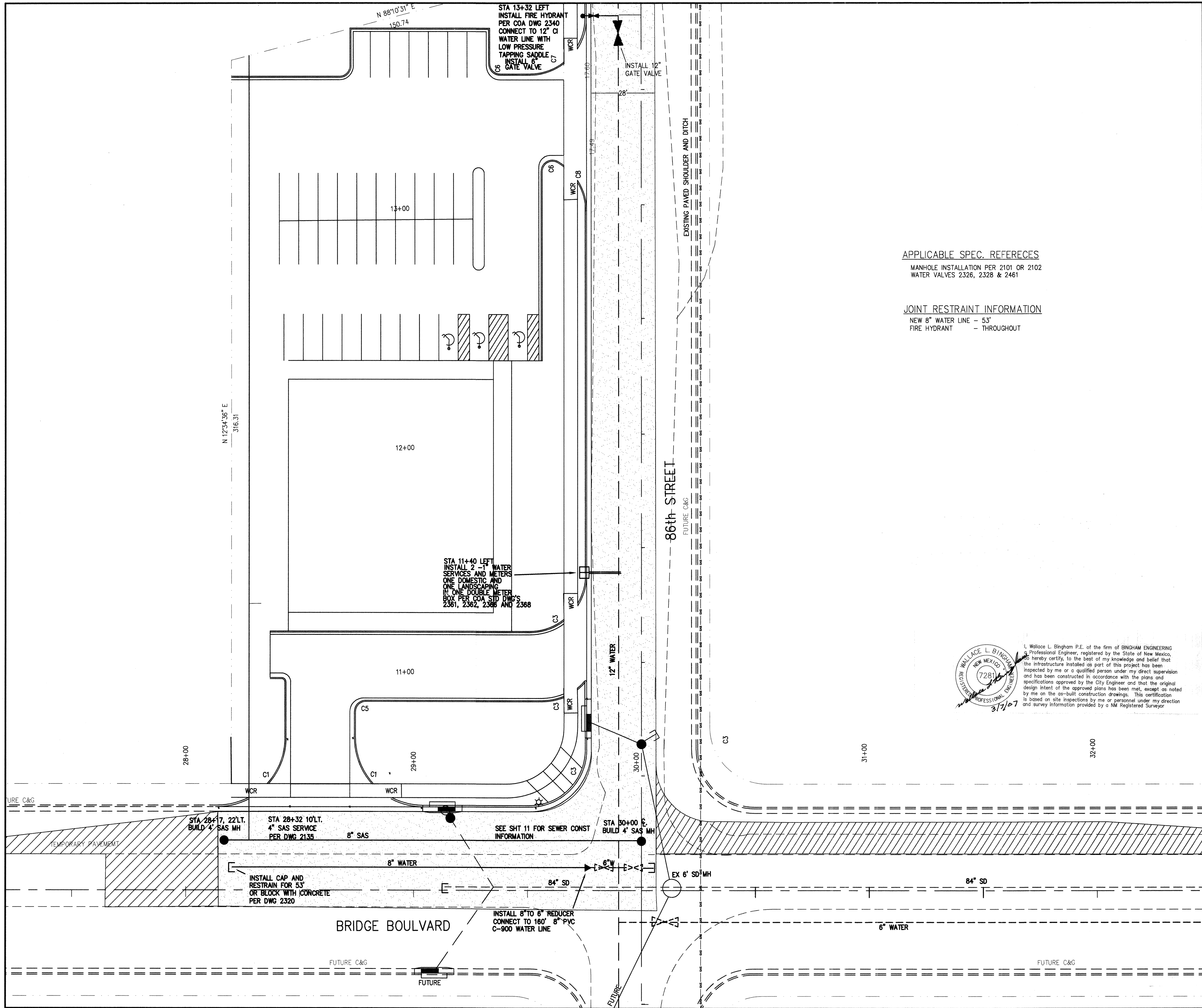
BINGHAM ENGINEERING
ALBUQUERQUE, NEW MEXICO
505 797 4699

CITY OF ALBUQUERQUE
PUBLIC WORKS DEPARTMENT
ENGINEERING DEVELOPMENT GROUP

TITLE: **SIGNING AND MARKING**

| | | | |
|---|---|---------------|------------|
| Design Review Committee | City Engineer Approval | Mo./Day/Yr | Mo./Day/Yr |
| APPROVED DEC - 7 2004 DESIGN REVIEW COMMITTEE | APPROVED DEC - 7 2004 CITY ENGINEER | | |
| City Project No. 735682 | Zone Map No. K9 | Sheet 9 of 14 | |

| ENGINEER'S SEAL | | REVISIONS | | AS BUILT INFORMATION | |
|-----------------|--|-----------|----------|----------------------|----------|
| | | NO. | DATE | NO. | DATE |
| | | 1 | 12/14/04 | 1 | 12/14/04 |
| | | 2 | | 2 | |
| | | 3 | | 3 | |
| | | 4 | | 4 | |
| | | 5 | | 5 | |
| | | 6 | | 6 | |
| | | 7 | | 7 | |
| | | 8 | | 8 | |
| | | 9 | | 9 | |
| | | 10 | | 10 | |
| | | 11 | | 11 | |
| | | 12 | | 12 | |
| | | 13 | | 13 | |
| | | 14 | | 14 | |
| | | 15 | | 15 | |
| | | 16 | | 16 | |
| | | 17 | | 17 | |
| | | 18 | | 18 | |
| | | 19 | | 19 | |
| | | 20 | | 20 | |
| | | 21 | | 21 | |
| | | 22 | | 22 | |
| | | 23 | | 23 | |
| | | 24 | | 24 | |
| | | 25 | | 25 | |
| | | 26 | | 26 | |
| | | 27 | | 27 | |
| | | 28 | | 28 | |
| | | 29 | | 29 | |
| | | 30 | | 30 | |
| | | 31 | | 31 | |
| | | 32 | | 32 | |
| | | 33 | | 33 | |
| | | 34 | | 34 | |
| | | 35 | | 35 | |
| | | 36 | | 36 | |
| | | 37 | | 37 | |
| | | 38 | | 38 | |
| | | 39 | | 39 | |
| | | 40 | | 40 | |
| | | 41 | | 41 | |
| | | 42 | | 42 | |
| | | 43 | | 43 | |
| | | 44 | | 44 | |
| | | 45 | | 45 | |
| | | 46 | | 46 | |
| | | 47 | | 47 | |
| | | 48 | | 48 | |
| | | 49 | | 49 | |
| | | 50 | | 50 | |
| | | 51 | | 51 | |
| | | 52 | | 52 | |
| | | 53 | | 53 | |
| | | 54 | | 54 | |
| | | 55 | | 55 | |
| | | 56 | | 56 | |
| | | 57 | | 57 | |
| | | 58 | | 58 | |
| | | 59 | | 59 | |
| | | 60 | | 60 | |
| | | 61 | | 61 | |
| | | 62 | | 62 | |
| | | 63 | | 63 | |
| | | 64 | | 64 | |
| | | 65 | | 65 | |
| | | 66 | | 66 | |
| | | 67 | | 67 | |
| | | 68 | | 68 | |
| | | 69 | | 69 | |
| | | 70 | | 70 | |
| | | 71 | | 71 | |
| | | 72 | | 72 | |
| | | 73 | | 73 | |
| | | 74 | | 74 | |
| | | 75 | | 75 | |
| | | 76 | | 76 | |
| | | 77 | | 77 | |
| | | 78 | | 78 | |
| | | 79 | | 79 | |
| | | 80 | | 80 | |
| | | 81 | | 81 | |
| | | 82 | | 82 | |
| | | 83 | | 83 | |
| | | 84 | | 84 | |
| | | 85 | | 85 | |
| | | 86 | | 86 | |
| | | 87 | | 87 | |
| | | 88 | | 88 | |
| | | 89 | | 89 | |
| | | 90 | | 90 | |
| | | 91 | | 91 | |
| | | 92 | | 92 | |
| | | 93 | | 93 | |
| | | 94 | | 94 | |
| | | 95 | | 95 | |
| | | 96 | | 96 | |
| | | 97 | | 97 | |
| | | 98 | | 98 | |
| | | 99 | | 99 | |
| | | 100 | | 100 | |



APPLICABLE SPEC. REFERENCES

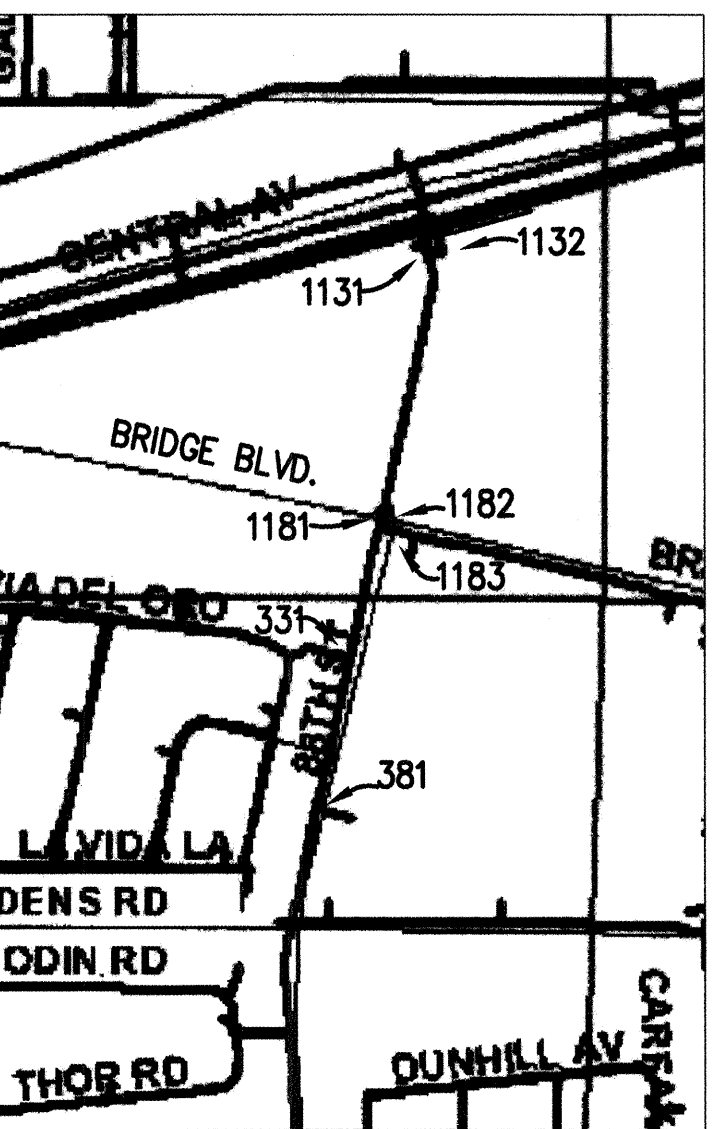
MANHOLE INSTALLATION PER 2101 OR 2102
WATER VALVES 2326, 2328 & 2461

JOINT RESTRAINT INFORMATION

NEW 8" WATER LINE - 53"
FIRE HYDRANT - THROUGHOUT



I, Wallace L. Bingham P.E. of the firm of BINGHAM ENGINEERING, a Professional Engineer, registered by the State of New Mexico, hereby certify, to the best of my knowledge and belief that the infrastructure installed as part of this project has been inspected by me or a qualified person under my direct supervision and has been constructed in accordance with the plans and specifications approved by the City Engineer and that the original design intent of the approved plans has been met, except as noted by me on the as-built construction drawings. This certification is based on site inspections by me or personnel under my direction and survey information provided by a NM Registered Surveyor.



WATER SHUTOFF PLAN: ALL VALVES SHOWN

NOTE:
THE LOCATION OF ALL EXISTING UTILITIES SHOWN WERE OBTAINED FROM RESEARCH, AS-BUILTS, SURVEYS AND INFORMATION PROVIDED BY OTHERS. IT SHALL BE THE RESPONSIBILITY OF THE CONTRACTOR TO CONDUCT HIS OWN RESEARCH TO SATISFY HIS NEED TO KNOW THE PRESENCE OF UNSEEN UTILITIES, AND OTHER OBSTRUCTIONS PRIOR TO COMMENCING CONSTRUCTION. ANY CHANGES WILL REQUIRE A CHANGE ORDER.

UTILITY LEGEND

| DESCRIPTION | PROPOSED | EXISTING |
|--------------------------|----------|------------|
| SANITARY SEWER LINE | 8" S | EX 8" S |
| SANITARY SEWER MANHOLE | S | EX S |
| SAS SERVICE CONNECTION | S | S |
| STORM DRAIN LINE | 18" SD | EX 18" SD |
| STORM DRAIN MANHOLE | N/A | EX |
| STORM DRAIN INLETS | N/A | EX |
| WATER LINE | 8" W | EX 8" W |
| GATE VALVE | W | N/A |
| AIR RELEASE VALVE | W | N/A |
| FIRE HYDRANTS | H | H |
| REDUCERS | R | R |
| 3/4" WATER SERVICE/METER | W | W |
| TEES | T | T |
| CROSSES | C | C |
| BENDS | B | B |
| CAPS & PLUGS | P | P |
| GAS LINES | N/A | EX 2" H.P. |
| OVERHEAD ELECTRICAL LINE | N/A | EX |
| UNDERGROUND ELECTRICAL | N/A | EX |
| OVERHEAD TELEPHONE | N/A | EX |
| UNDERGROUND TELEPHONE | N/A | EX |
| CABLE TELEVISION | N/A | EX |
| POWER OR TELEPHONE POLE | N/A | EX |

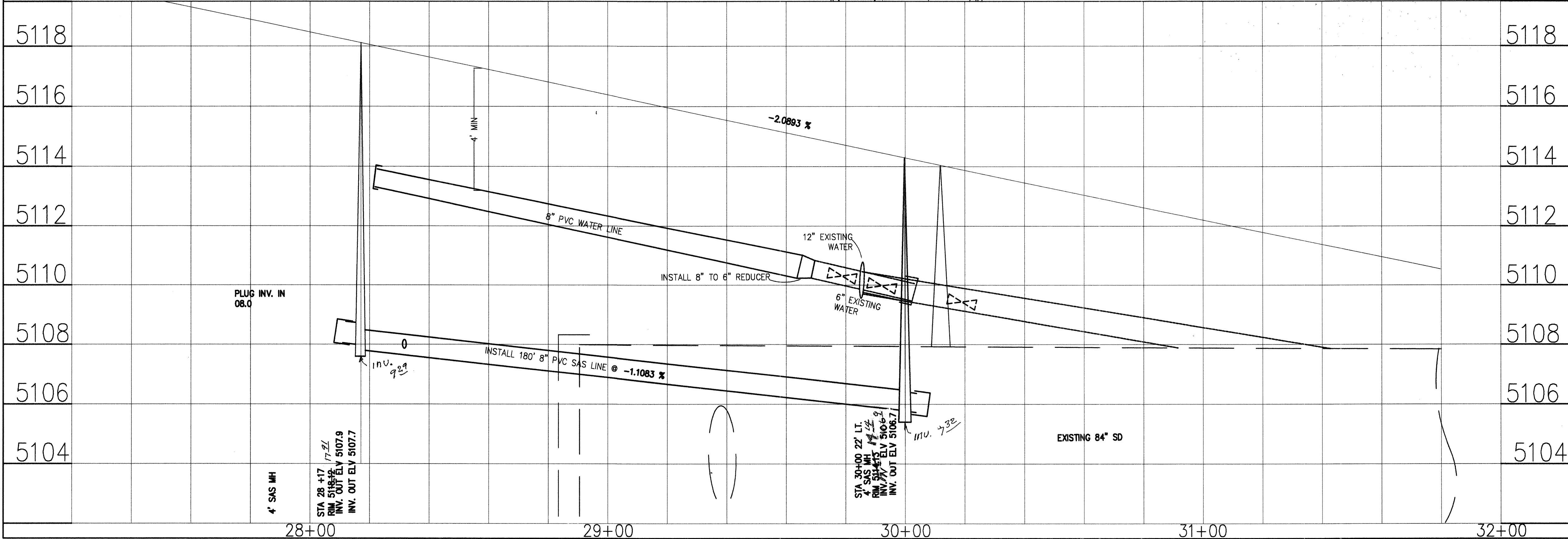
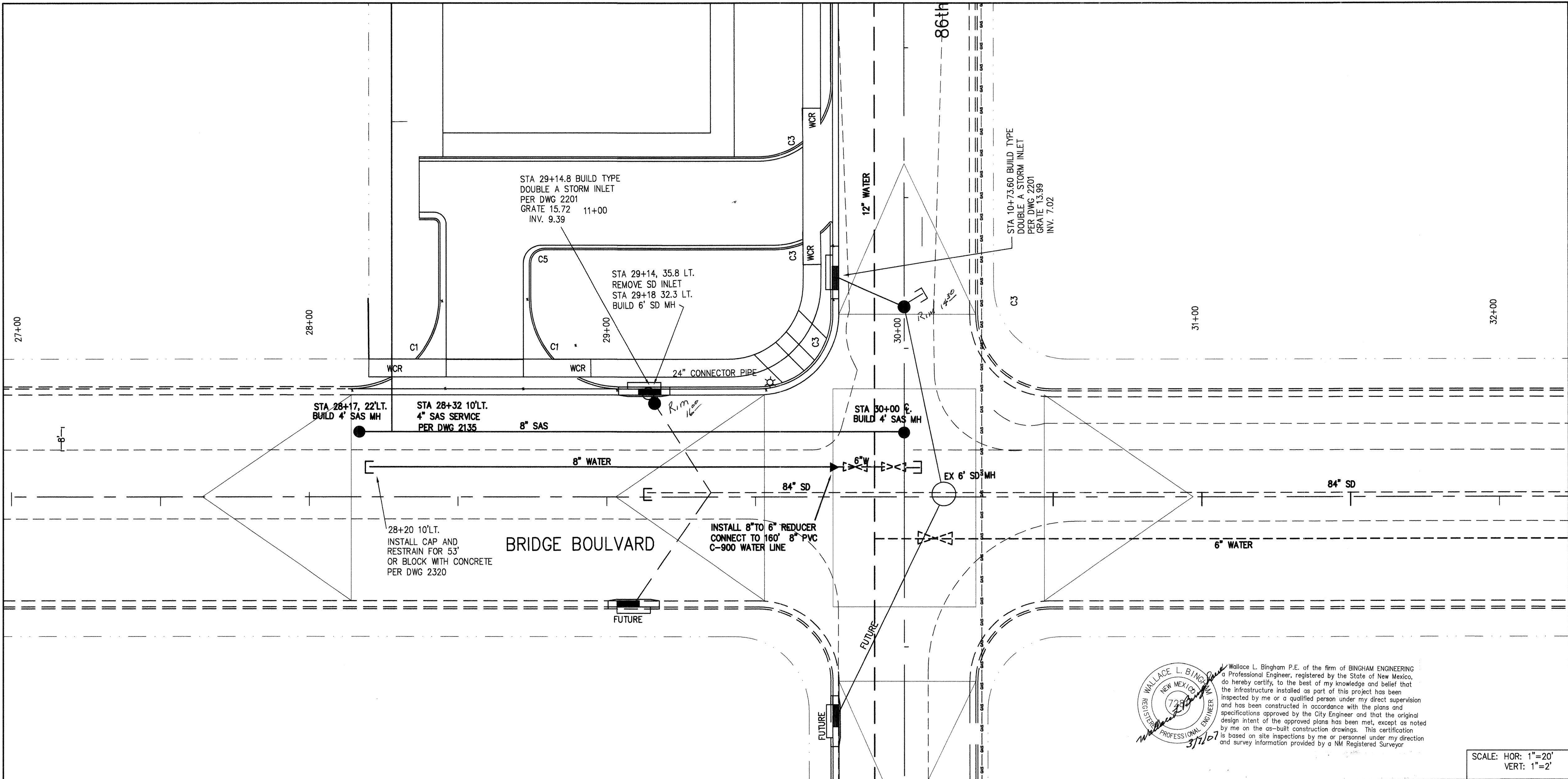
SCALE 1"=20'

BINGHAM ENGINEERING
ALBUQUERQUE, NEW MEXICO
505 797 4699

CITY OF ALBUQUERQUE
PUBLIC WORKS DEPARTMENT
ENGINEERING DEVELOPMENT GROUP

MASTER UTILITY PLAN

| | | | |
|---|---|----------------|------------|
| Design Review Committee | City Engineer Approval | Mo./Day/Yr | Mo./Day/Yr |
| APPROVED DEC - 7 2004 DESIGN REVIEW COMMITTEE | APPROVED DEC - 7 2004 CITY ENGINEER | | |
| City Project No. 735682 | Zone Map No. K9 | Sheet 10 of 14 | |



AS BUILT INFORMATION

| | |
|------------|-----------------------|
| CUSTOMER | J.H. Eardley & Assoc. |
| DRAWN BY | Presley |
| CHECKED BY | W.L. Bingham |
| DATE | |

BENCH MARKS

| | |
|------------------|----------------|
| ACS STATION | 7 - K9 |
| NAD 1927 NMSP | C |
| X=355815.77 | Y=1482842.09 |
| GRID TO GROUND | 0.99967820 |
| X=1502101.6571 | Y=1534274.4482 |
| Da = 00'16"37" | |
| ELEV. (NAD 1929) | 5137.92 |

SURVEY INFORMATION

| | |
|----------------------|------|
| FIELD NOTES | DATE |
| 1 COMMUNITY SCIENCES | |

ENGINEER'S SEAL

| | |
|----------------|----|
| REMARKS | BY |
| REVISIONS | |
| DESIGN | |
| DATE 9/04 | |
| DRAWN BY WLB | |
| CHECKED BY WLB | |

SCALE: 1"=20'

North Arrow

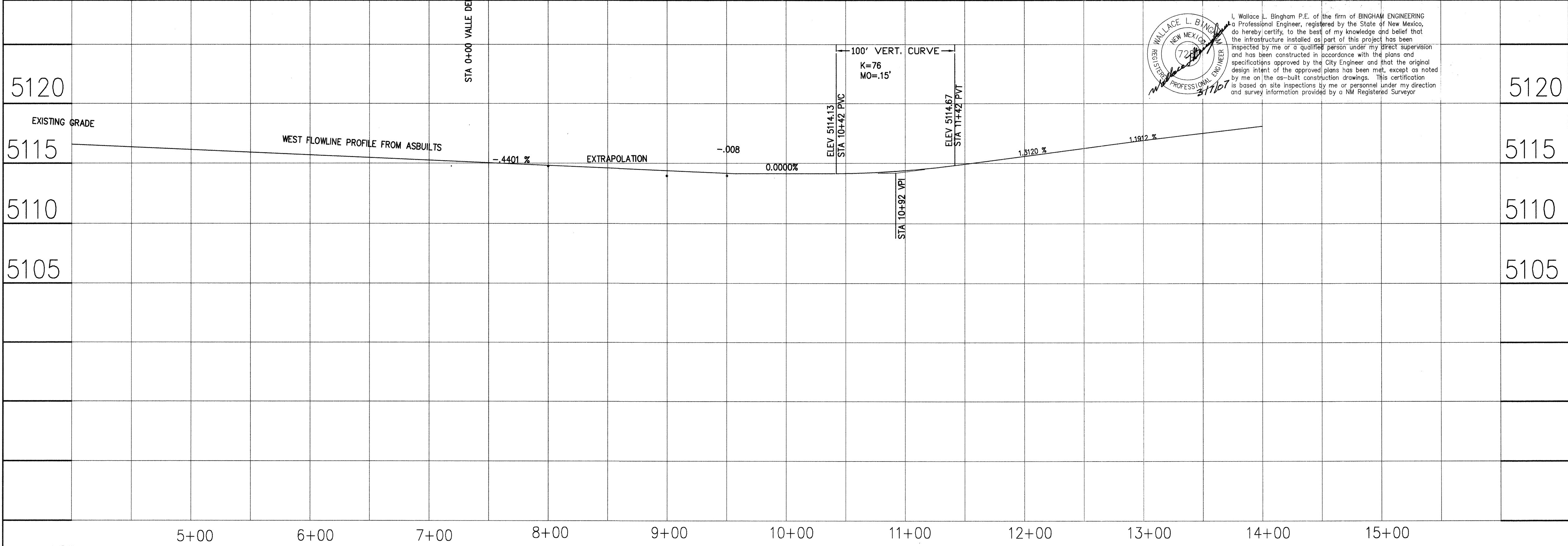
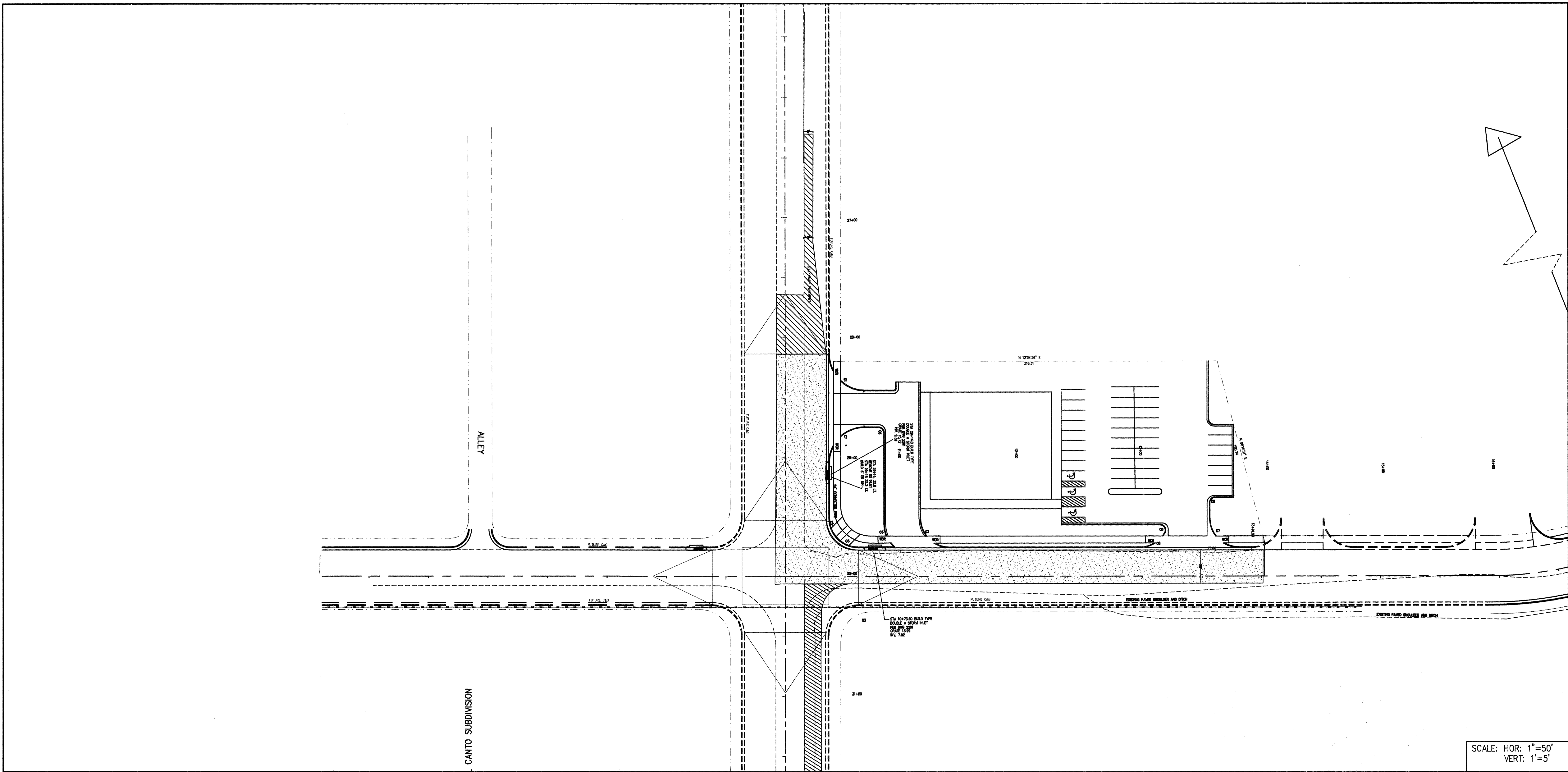
BINGHAM ENGINEERING
ALBUQUERQUE, NEW MEXICO
505 797 4699

CITY OF ALBUQUERQUE
PUBLIC WORKS DEPARTMENT
ENGINEERING DEVELOPMENT GROUP

TITLE: **BRIDGE STREET
WATER AND SEWER IMPROVEMENTS**

| | | | |
|-------------------------|------------------------|------------|------------|
| Design Review Committee | City Engineer Approval | Mo./Day/Yr | Mo./Day/Yr |
| | | | |

City Project No. 735682 Zone Map No. K9 Sheet 11 of 14



WALLACE L. BINGHAM
REGISTERED PROFESSIONAL ENGINEER
NEW MEXICO
7280
31701

I, Wallace L. Bingham P.E. of the firm of BINGHAM ENGINEERING a Professional Engineer, registered by the State of New Mexico, do hereby certify, to the best of my knowledge and belief that the infrastructure installed as part of this project has been inspected by me or a qualified person under my direct supervision and has been constructed in accordance with the plans and specifications approved by the City Engineer and that the original design intent of the approved plans has been met, except as noted by me on the as-built construction drawings. This certification is based on site inspections by me or personnel under my direction and survey information provided by a NM Registered Surveyor.

SCALE: HOR: 1"=50'
VERT: 1"=5'

BINGHAM ENGINEERING
ALBUQUERQUE, NEW MEXICO
505 797 4699

| | | | |
|---|--|---|----------------|
| CITY OF ALBUQUERQUE PUBLIC WORKS DEPARTMENT ENGINEERING DEVELOPMENT GROUP | | | |
| TITLE: 86th SREET GRADE | | | |
| Design Review Committee | | City Engineer Approval | |
| APPROVE DEC - 7 2004 DESIGN REVIEW COMMITTEE | | APPROVE DEC - 7 2004 CITY ENGINEER | |
| City Project No. 735682 | | Zone Map No. K9 | Sheet 12 of 14 |

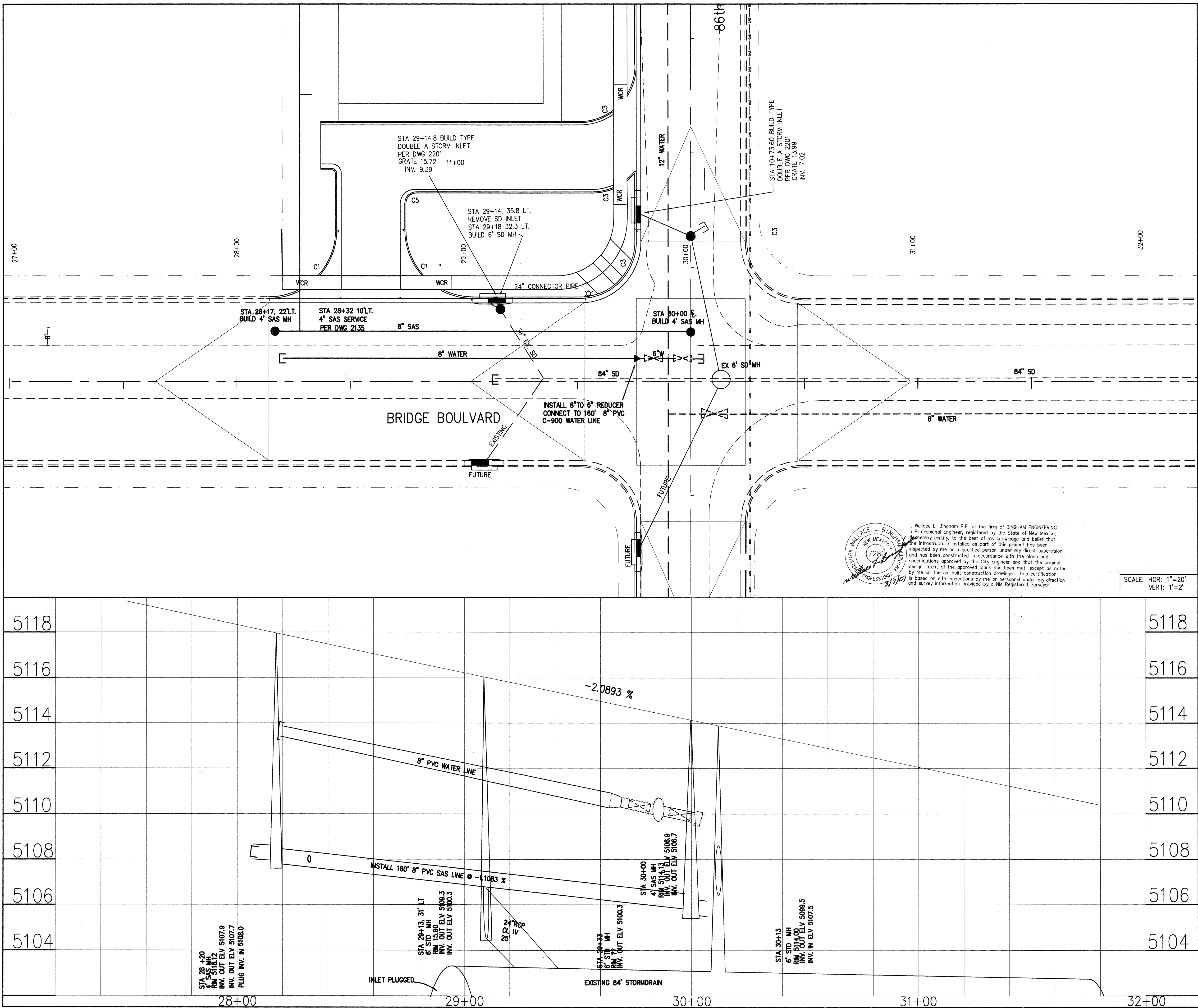
| | | | |
|-----|------|-----------|-----|
| NO. | DATE | REMARKS | BY |
| 1 | 9/04 | DESIGN | WLB |
| | 9/04 | REVISIONS | WLB |
| | 9/04 | DESIGN | WLB |
| | 9/04 | REVISIONS | WLB |

| | |
|-----------------|--|
| ENGINEER'S SEAL | |
| | |
| 12/04/04 | |

| | | |
|--------------------|--------------------|------|
| SURVEY INFORMATION | | |
| NO. | BY | DATE |
| 1 | COMMUNITY SCIENCES | |

| | |
|--------------------------------------|--|
| BENCH MARKS | |
| ACS STATION "SANDBERN" | |
| NAD 1927 NMSP C | |
| X=361854.29 Y=1534209.29 | |
| NAD 1983 NMSP C CORPSCON | |
| X=1502101.6571 Y=1534274.4482 | |
| CONVERGENCE 16' 01.4" (1983) | |
| COMB SCALE FACTOR = 0.99966079 | |
| ELEV. (NAVD 1929) 5456.92 (2ND ORD.) | |

| | |
|----------------------|------|
| AS BUILT INFORMATION | |
| COMPILED BY | DATE |
| WLB | |
| CHECKED BY | DATE |
| WLB | |
| REVIEWED BY | DATE |
| WLB | |
| APPROVED BY | DATE |
| WLB | |



NOTE:
THE LOCATION OF ALL EXISTING UTILITIES SHOWN WERE OBTAINED FROM RESEARCH, AS-BUILTS, SURVEYS AND INFORMATION PROVIDED BY OTHERS. IT SHALL BE THE RESPONSIBILITY OF THE CONTRACTOR TO CONDUCT HIS OWN RESEARCH TO SATISFY HIS NEED TO KNOW THE PRESENCE OF UNSEEN UTILITIES, AND OTHER OBSTRUCTIONS PRIOR TO COMMENCING CONSTRUCTION. ANY CHANGES WILL REQUIRE A CHANGE ORDER.

SCALE: 1"=20'

BINGHAM ENGINEERING
ALBUQUERQUE, NEW MEXICO
505 797 4699

CITY OF ALBUQUERQUE
PUBLIC WORKS DEPARTMENT
ENGINEERING DEVELOPMENT GROUP

TITLE: **BRIDGE BLVD STORM DRAIN IMP.**


Design Review Committee
APPROVED
DEC - 7 2004
DESIGN REVIEW COMMITTEE

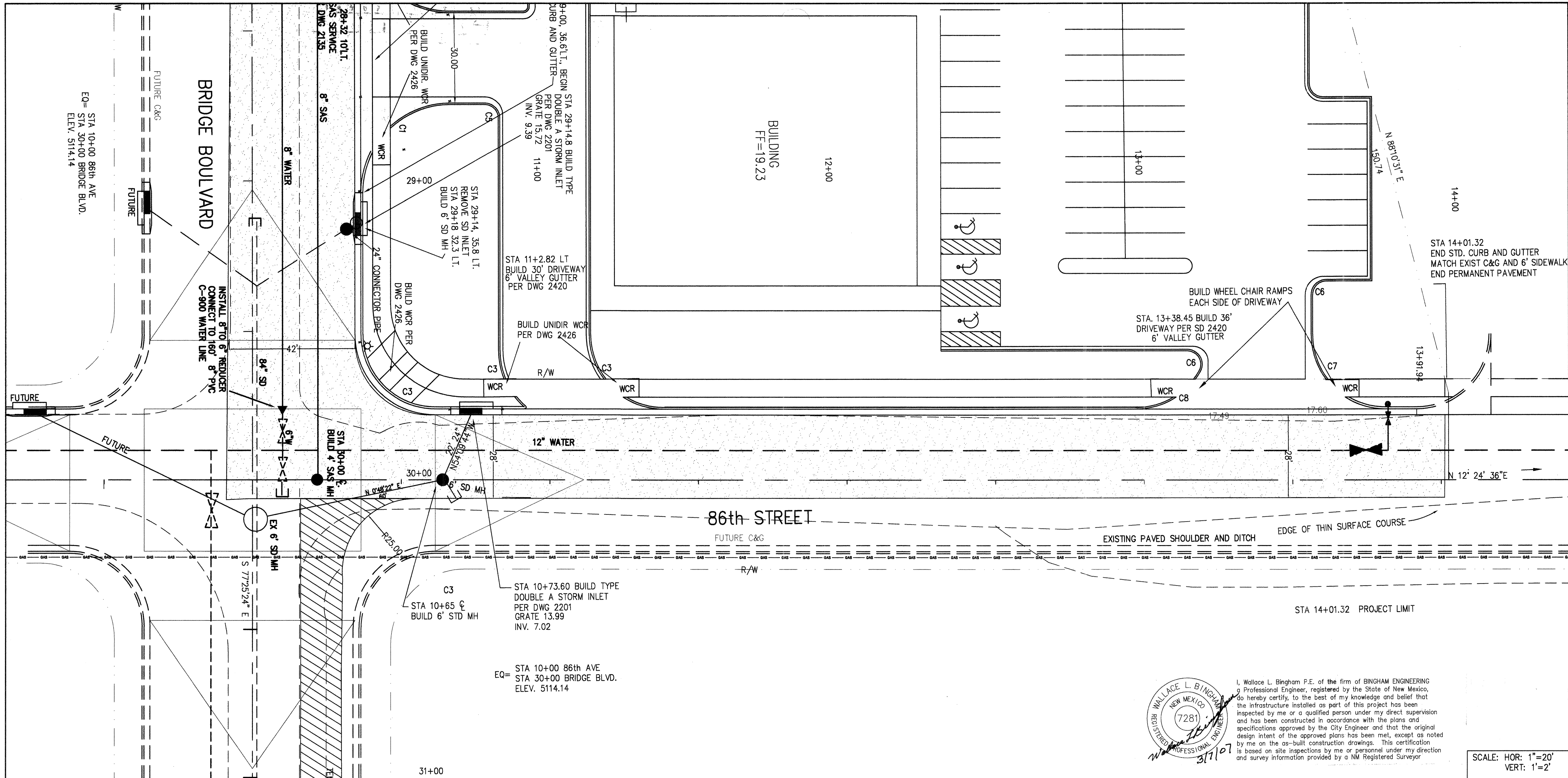
City Engineer Approval
APPROVED
DEC - 7 2004
CITY ENGINEER

City Project No. 735682

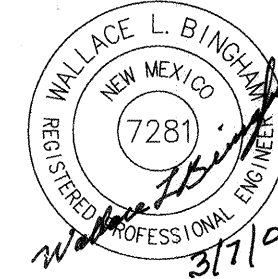
Zone Map No. K9

Sheet 13 of 14

| | | | | | | | |
|--|--|--------------------|--------------------|-------------------------------|--|--|--|
| ENGINEER'S SEAL | | SURVEY INFORMATION | | BENCH MARKS | | AS BUILT INFORMATION | |
|  | | FIELD NOTES | | ACS STATION 7 - K9 | | CONTRACTOR <i>J & H Earth Moving & Grading</i> | |
| | | NO. | DATE | NAD 1927 NMSP C | | NO. <i>1</i> DATE <i>12/14/04</i> | |
| | | 1 | COMMUNITY SCIENCES | X=355815.77 Y=1482842.09 | | NO. <i>2</i> DATE <i>12/14/04</i> | |
| | | | | GRID TO GROUND 0.99967820 | | NO. <i>3</i> DATE <i>12/14/04</i> | |
| | | | | X=1502101.6571 Y=1534274.4482 | | NO. <i>4</i> DATE <i>12/14/04</i> | |
| | | Do = 00'16 37 " | | ELEV. (NAVD 1929) 5137.92 | | MICRO-FILM INFORMATION | |
| | | | | | | RECORDED BY | |
| | | | | | | DATE | |
| | | | | | | NO. | |
| | | | | | | | |
| | | | | | | | |
| | | | | | | | |
| | | | | | | | |
| | | | | | | | |
| | | | | | | | |
| | | | | | | | |
| | | | | | | | |
| | | | | | | | |
| | | | | | | | |
| | | | | | | | |
| | | | | | | | |
| | | | | | | | |
| | | | | | | | |
| | | | | | | | |
| | | | | | | | |
| | | | | | | | |
| | | | | | | | |
| | | | | | | | |
| | | | | | | | |
| | | | | | | | |
| | | | | | | | |
| | | | | | | | |
| | | | | | | | |
| | | | | | | | |
| | | | | | | | |
| | | | | | | | |
| | | | | | | | |
| | | | | | | | |
| | | | | | | | |
| | | | | | | | |
| | | | | | | | |
| | | | | | | | |
| | | | | | | | |
| | | | | | | | |
| | | | | | | | |
| | | | | | | | |
| | | | | | | | |
| | | | | | | | |
| | | | | | | | |
| | | | | | | | |
| | | | | | | | |
| | | | | | | | |
| | | | | | | | |
| | | | | | | | |
| | | | | | | | |
| | | | | | | | |
| | | | | | | | |
| | | | | | | | |
| | | | | | | | |
| | | | | | | | |
| | | | | | | | |
| | | | | | | | |
| | | | | | | | |
| | | | | | | | |
| | | | | | | | |
| | | | | | | | |
| | | | | | | | |
| | | | | | | | |
| | | | | | | | |
| | | | | | | | |
| | | | | | | | |
| | | | | | | | |
| | | | | | | | |
| | | | | | | | |
| | | | | | | | |
| | | | | | | | |
| | | | | | | | |
| | | | | | | | |
| | | | | | | | |
| | | | | | | | |
| | | | | | | | |
| | | | | | | | |
| | | | | | | | |
| | | | | | | | |
| | | | | | | | |
| | | | | | | | |
| | | | | | | | |
| | | | | | | | |
| | | | | | | | |
| | | | | | | | |
| | | | | | | | |
| | | | | | | | |
| | | | | | | | |
| | | | | | | | |
| | | | | | | | |
| | | | | | | | |
| | | | | | | | |
| | | | | | | | |
| | | | | | | | |
| | | | | | | | |
| | | | | | | | |
| | | | | | | | |
| | | | | | | | |
| | | | | | | | |
| | | | | | | | |
| | | | | | | | |
| | | | | | | | |
| | | | | | | | |
| | | | | | | | |
| | | | | | | | |
| | | | | | | | |
| | | | | | | | |
| | | | | | | | |
| | | | | | | | |
| | | | | | | | |
| | | | | | | | |
| | | | | | | | |
| | | | | | | | |
| | | | | | | | |
| | | | | | | | |
| | | | | | | | |
| | | | | | | | |
| | | | | | | | |
| | | | | | | | |
| | | | | | | | |
| | | | | | | | |

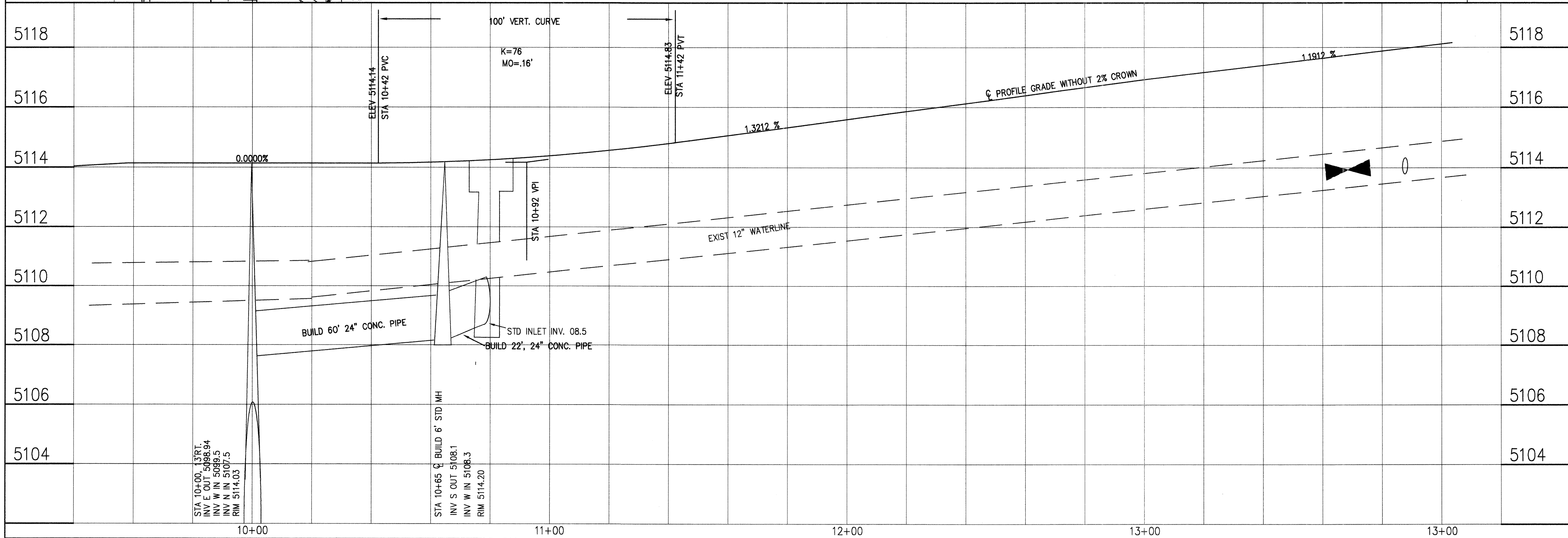


NOTE:
THE LOCATION OF ALL EXISTING UTILITIES SHOWN WERE OBTAINED FROM RESEARCH, AS-BUILTS, SURVEYS AND INFORMATION PROVIDED BY OTHERS. IT SHALL BE THE RESPONSIBILITY OF THE CONTRACTOR TO CONDUCT HIS OWN RESEARCH TO SATISFY HIS NEED TO KNOW THE PRESENCE OF UNSEEN UTILITIES, AND OTHER OBSTRUCTIONS PRIOR TO COMMENCING CONSTRUCTION. ANY CHANGES WILL REQUIRE A CHANGE ORDER.



I, Wallace L. Bingham P.E. of the firm of BINGHAM ENGINEERING, a Professional Engineer, registered by the State of New Mexico, do hereby certify, to the best of my knowledge and belief that the infrastructure installed as part of this project has been inspected by me or a qualified person under my direct supervision and has been constructed in accordance with the plans and specifications approved by the City Engineer and that the original design intent of the approved plans has been met, except as noted by me on the as-built construction drawings. This certification is based on site inspections by me or personnel under my direction and survey information provided by a NM Registered Surveyor.

SCALE: HOR: 1"=20'
VERT: 1"=2'



BINGHAM ENGINEERING
ALBUQUERQUE, NEW MEXICO
505 797 4699

| | | | |
|---|------------------------|----------------|------------|
| CITY OF ALBUQUERQUE PUBLIC WORKS DEPARTMENT ENGINEERING DEVELOPMENT GROUP | | | |
| TITLE: 86th STREET STORM DRAIN IMP. | | | |
| Design Review Committee | City Engineer Approval | Mo./Day/Yr | Mo./Day/Yr |
| | | | |
| DESIGN REVIEW COMMITTEE | CITY ENGINEER | | |
| City Project No. 735682 | Zone Map No. K9 | Sheet 14 of 14 | |

| AS BUILT INFORMATION | | BENCH MARKS | | SURVEY INFORMATION | | ENGINEER'S SEAL | |
|----------------------|------|-------------------|--------------------|--------------------|------|-----------------|--|
| CONTRACTOR | DATE | ACS STATION | "SANDBERN" | FIELD NOTES | DATE | | |
| DESIGNED BY | DATE | NAD 1927 | NMSP C | BY | | | |
| MEASURED BY | DATE | X=361854.29 | Y=1534209.29 | NO. | 1 | | |
| FIELD | DATE | NAD 1983 | NMSP C CORPSON | COMMUNITY SCIENCES | | | |
| PERFORMED BY | DATE | X=1502101.6571 | Y=1534274.4482 | | | | |
| CHECKED BY | DATE | CONVERGENCE | 16' 01.4" (1983) | | | | |
| RECORDED BY | DATE | COMP SCALE FACTOR | = 0.99966079 | | | | |
| | DATE | ELEV. (NAD 1929) | 5456.92 (2ND ORD.) | | | | |