

CONSTRUCTION PLANS FOR
MAVERIK STORE
1401 WYOMING BLVD. NE
UTILITY IMPROVEMENTS

ALBUQUERQUE
BERNALILLO COUNTY, NEW MEXICO
JUNE 2019



INDEX TO DRAWINGS

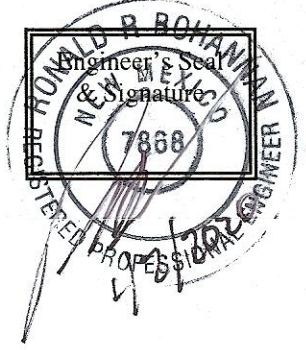
CERTIFICATE OF SUBSTANTIAL COMPLIANCE ON PLANS (ABCUWA ONLY)

I, Ronald R. Bohannon, of the firm of Tierra West LLC, a Registered Professional Engineer in the State of New Mexico, do hereby certify, to the best of my knowledge and belief, that the infrastructure installed as part of this project has been inspected by me or by a qualified person under my direct supervision and has been constructed in accordance with the plans and specifications approved by the City Planning Department and that the original intent has been met, except as noted on the as-built construction drawings.



CERTIFICATE OF SUBSTANTIAL COMPLIANCE ON PLANS

I, Ronald R. Bohannon, of the firm of Tierra West LLC, a Registered Professional Engineer in the State of New Mexico, do hereby certify, to the best of my knowledge and belief, that the infrastructure installed as part of this project has been inspected by me or by a qualified person under my direct supervision and has been constructed in accordance with the plans and specifications approved by the City Planning Department and that the original design intent of the approved plans has been met, except as noted by me on the as-built construction drawings.



- 1 TITLE SHEET
- 2 PLAT
- 3 TRAFFIC CIRCULATION LAYOUT PLAN (REFERENCE)
- 4 GRADING PLAN (REFERENCE)
- 5 PAVING IMPROVEMENTS (WYOMING BLVD. AND CONSTITUTION AVE.)
- 6 UTILITY IMPROVEMENTS

WATER & SEWER

1. ALL UTILITIES AND UTILITY SERVICE LINES SHALL BE INSTALLED PRIOR TO PAVING. EXISTING VALVES AND MANHOLES SHALL NOT BE BURIED OR PAVED OVER BUT RIMS SHALL BE ADJUSTED TO MATCH NEW GRADE PER COA STANDARD DRAWINGS 2460 AND 2461.
2. MANHOLE RIMS, FIRE HYDRANT ELEVATIONS, AND FLANGE ELEVATIONS SHOWN ARE APPROXIMATE. CONTRACTOR SHALL FIELD VERIFY AND ADJUST TO FINAL PAVEMENT OR SURFACE GRADES.
3. THE CONTRACTOR SHALL COORDINATE WITH THE WATER AUTHORITY SEVEN (7) DAYS IN ADVANCE OF PERFORMING WORK THAT WILL AFFECT THE PUBLIC WATER OR SANITARY SEWER INFRASTRUCTURE. WORK REQUIRING SHUTOFF OF FACILITIES DESIGNATED AS MASTER PLAN FACILITIES MUST BE COORDINATED WITH THE WATER AUTHORITY 14 DAYS IN ADVANCE OF PERFORMING SUCH WORK. ONLY WATER AUTHORITY CREWS ARE AUTHORIZED TO OPERATE PUBLIC VALVES. SHUTOFF REQUESTS MUST BE MADE ONLINE AT [HTTP://ABCWUA.ORG/WATER_SHUT_OFF_AND_TURN_ON_PROCESURES.ASPX](http://abcwua.org/water_shut_off_and_turn_on_procedures.aspx)
4. PROPOSED WATERLINE MATERIALS SHALL BE PVC PIPE MEETING AWWA C-900; DR18 REQUIREMENTS (6" - 12") OR DUCTILE IRON PIPE MEETING AWWA C-150 REQUIREMENTS (6" - 48").
5. ALL WATERLINE FITTINGS, VALVES, BENDS, TEES, CROSSES AND APPURTENANCES SHALL HAVE RESTRAINED JOINTS UNLESS OTHERWISE NOTED ON THE PLANS. REFER SHEET 10 FOR THE JOINT RESTRAINT TABLE.
6. ALL SANITARY SEWER LINE STATIONING REFERS TO SANITARY SEWER CENTERLINE STATIONING. EXCEPT WHEN PROFILED WITHIN A PROPOSED OR EXISTING STREET, WHERE STREET STATIONING SHALL GOVERN.
7. ALL FINAL BACKFILL FOR TRENCHES SHALL BE COMPACTED TO A MINIMUM OF 95% MAXIMUM DENSITY PER ASTM D-1557 AND AS DIRECTED BY STANDARD SPECIFICATIONS SECTION 701.14.2 AND STANDARD DRAWING NUMBER 2465.
8. ELECTRONIC MARKER SPHERES (EMS) WILL BE PLACED ACCORDING TO THE CITY OF ALBUQUERQUE SPECIFICATIONS FOR PUBLIC WORKS CONSTRUCTION, 1986 EDITION AS REVISED THROUGH UPDATE #9. THE CONTRACTOR SHALL INSTALL 4" X 4" X 5' POST AND EMS AT THE END OF EACH SANITARY SEWER SERVICE.
9. TRACER WIRE SHALL BE INCLUDED FOR ALL PUBLIC WATER AND SEWER MAINS AND FOR WATER SERVICES IN ACCORDANCE WITH WATER AUTHORITY DETAILS.
10. CONTRACTOR SHALL PROVIDE THE PROPOSED HYDRO TESTING PLANS TO THE WUA INSPECTORS FOR APPROVAL PRIOR TO BEGINNING TESTING OPERATIONS.
11. AT UTILITY CROSSINGS, WHERE LESS THAN 18" OF VERTICAL SEPARATION FROM STORM DRAIN PIPING OR STRUCTURES IS PROPOSED, LEAN FILL CONSTRUCTION (PER SECTION 207 OF THE STANDARD SPECIFICATIONS) SHALL BE USED TO PROTECT THE WATER OR SEWER LINE. LEAN FILL SHALL EXTEND A PERPENDICULAR DISTANCE OF 5 FEET ON EACH SIDE OF THE STORM PIPE OR STRUCTURE.
12. ALL DESIGNS AND CONSTRUCTION OF ANY UNDERGROUND UTILITIES SHALL COMPLY WITH ADMINISTRATIVE INSTRUCTION NO. 9 FOR WORK NEARBY OR AFFECTING SAN JUAN CHAMA TRANSMISSION LINES AND APPURTENANCES. INFORMATION SHALL BE PROVIDED TO THE WATER AUTHORITY ONE (1) MONTH IN ADVANCE OF THE CONSTRUCTION START DATE. INFORMATION CAN BE FOUND AT [HTTP://WWW.ABCWUA.ORG/WATER_SHUT_OFF_AND_TURN_ON_PROCESURES.ASPX](http://www.abcwua.org/water_shut_off_and_turn_on_procedures.aspx)
13. ABCWUA WATER AND SANITARY SEWER AVAILABILITY STATEMENT #181011

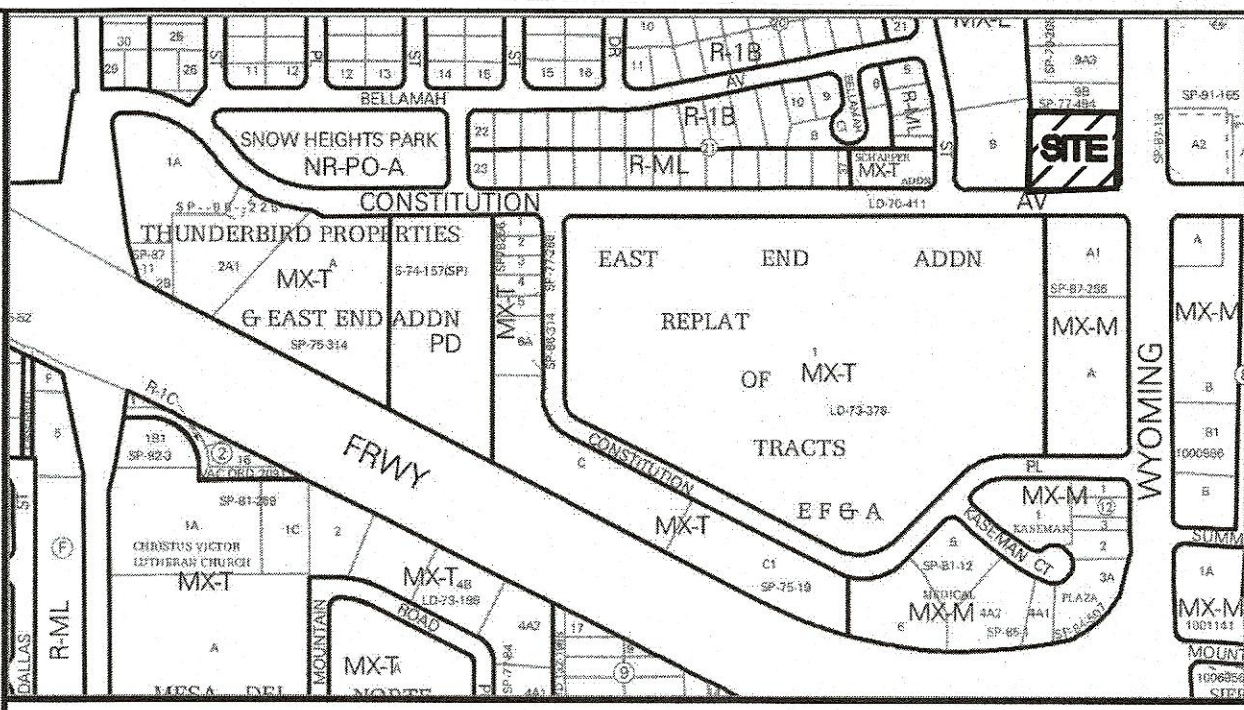
TRANSPORTATION

1. ANY STREET STRIPING ALTERED OR DESTROYED SHALL BE REPLACED WITH THERMO-PLASTIC REFLECTORIZED PAVEMENT MARKING BY CONTRACTOR TO THE SAME LOCATION AS EXISTING OR AS INDICATED BY THIS PLAN SET.
2. REMOVAL OF EXISTING CURB & GUTTER AND SIDEWALKS SHALL BE TO THE NEAREST JOINT.
3. OVERNIGHT PARKING OF CONSTRUCTION EQUIPMENT SHALL NOT OBSTRUCT DRIVEWAYS OR DESIGNATED TRAFFIC LANES. THE CONTRACTOR SHALL NOT STORE ANY EQUIPMENT OR MATERIAL WITHIN THE PUBLIC RIGHT-OF-WAY.
4. CURB AND GUTTER, SIDEWALKS, AND DRIVE PADS SHALL MATCH THE LINE AND GRADE OF ABUTTING EXISTING AREAS AS SHOWN ON THE PLANS OR AS DIRECTED BY THE PROJECT ENGINEER.
5. THE SUBGRADE PREP SHALL EXTEND ONE FOOT BEYOND THE FREE EDGE OF NEW CURB AND GUTTER AND SIDEWALK.
6. CONTRACTOR TO TEST SUBGRADE R-VALUE PRIOR TO CONSTRUCTION. IN THE EVENT THE R-VALUE IS LESS THAN 50, REMOVE 2 FEET OF SUBGRADE MATERIAL AND IMPORT MATERIAL WITH R-VALUE GREATER THAN 50 OR CONTACT THE ENGINEER IMMEDIATELY SO THE PAVEMENT SECTION CAN BE MODIFIED.
7. AT ALL PAVEMENT REMOVAL AND REPLACEMENTS, SAW-CUT EDGES SHALL BE STRAIGHT AND CLEAN, AND LONGITUDINAL JOINTS SHALL NOT BE PLACED WITHIN WHEEL PATHS. PATCHES SHALL BE REGULAR AND SQUARE OR RECTANGULAR, WITH FOUR STRAIGHT SIDES. FINISHED PAVEMENT SURFACE SHALL BE FLUSH WITH EXISTING PAVEMENT SURFACE, WITH NO SPILLOVER OF ASPHALT OR TACK COAT. CARE MUST BE TAKEN TO AVOID DAMAGING THE INTEGRITY OR APPEARANCE OF SURROUNDING PAVEMENTS; IF DAMAGED, THE ENTIRE SURFACE PATCH MUST BE EXPANDED TO COVER DAMAGES.
8. CONTRACTOR WILL ENSURE THE ASPHALT HAS A SMOOTH, UNIFORM EDGE WHEN REMOVING AND REPLACING CURB AND GUTTER. IF THE ASPHALT EDGE IS NOT SMOOTH AND UNIFORM, CONTRACTOR WILL SAW CUT AND REPLACE A ONE-FOOT STRIP OF ASPHALT ALONG THE FULL SECTION BEING REPLACED; REFER TO C.O.A. STANDARD DRAWING # 2465 WITH THE APPROPRIATE PAVING SECTION BASED ON ROADWAY CLASSIFICATION.

OTHER COMMON NOTES

1. ALL EXCAVATION, TRENCHING, AND SHORING ACTIVITIES MUST BE ACCOMPLISHED IN ACCORDANCE WITH OSHA 29CFR 1926.650 SUBPART P.
2. WHEN DISTURBING MORE THAN 1/4 ACRES, CONTRACTOR SHALL SECURE A "TOPSOIL DISTURBANCE PERMIT" PRIOR TO BEGINNING CONSTRUCTION.
3. IN ADVANCE OF CONSTRUCTION, CONTRACTOR SHALL DETERMINE IF OVERHEAD UTILITY LINES, SUPPORT STRUCTURES, POLES, GUYS, ETC. ARE AN OBSTRUCTION TO CONSTRUCTION OPERATIONS. IF ANY OBSTRUCTION TO CONSTRUCTION OPERATIONS IS EVIDENT, CONTRACTOR SHALL BE RESPONSIBLE FOR COORDINATING WITH THE APPROPRIATE UTILITY OWNER TO REMOVE OR SUPPORT THE UTILITY OBSTRUCTION. ANY COST ASSOCIATED WITH THIS EFFORT SHALL BE THE RESPONSIBILITY OF CONTRACTOR.
4. PNM WILL PROVIDE AT NO COST TO THE CITY OR THE CONTRACTOR THE REQUIRED PERSONNEL FOR INSPECTION OR OBSERVATION DEEMED NECESSARY BY PNM WHILE THE CONTRACTOR IS EXPOSING PNM'S CABLES. HOWEVER, THE CONTRACTOR SHALL BE CHARGED THE TOTAL COST ASSOCIATED WITH REPAIRS TO ANY DAMAGED CABLES OR FOR ANY COST ASSOCIATED WITH SUPPORTING OR RELOCATING THE POLES AND CABLES DURING CONSTRUCTION.
5. CONTRACTOR SHALL SUPPORT AND PROTECT ALL EXISTING, UNDERGROUND UTILITY LINES WHICH BECOME EXPOSED DURING CONSTRUCTION. PAYMENT FOR SUPPORTING WORK SHALL BE INCIDENTAL TO WATERLINE AND/OR SEWER LINE COSTS.
6. CONTRACTOR IS TO SUPPORT, PROTECT, AND MAINTAIN THE INTEGRITY OF ALL UNDERGROUND TELEPHONE, ELECTRIC CABLES AND CABLE TELEVISION UTILITIES AT NO ADDITIONAL COST TO THE OWNER. CABLE IS TO BE SUPPORTED AT A MAXIMUM SPACING OF FIFTEEN (15) FEET. CONTRACTOR SHALL COORDINATE WITH AND MAKE NECESSARY PAYMENT (IF ANY) TO UTILITY OWNER FOR DE-ENERGIZATION OF CABLES OR SUPPORT OF CABLES BY THE UTILITY OWNER.
7. CONTRACTOR SHALL PROMPTLY CLEAN UP ANY MATERIAL EXCAVATED WITHIN THE PUBLIC RIGHT-OF-WAY OR PRIVATE ROADWAY EASEMENTS TO PREVENT ANY EXCAVATED MATERIAL BEING WASHED DOWN THE STREET OR INTO ANY PUBLIC DRAINAGE FACILITY.
8. CONTRACTOR SHALL CONDUCT ALL WORK IN A MANNER WHICH WILL MINIMIZE INTERFERENCE WITH LOCAL TRAFFIC.
9. ALL EXISTING SIGNS, MARKERS, DELINEATORS, ETC., WITHIN THE CONSTRUCTION LIMITS SHALL BE REMOVED, STORED AND RE-SET BY THE CONTRACTOR.
10. DISPOSAL SITE FOR ALL EXCESS EXCAVATION MATERIAL AND UNSUITABLE MATERIAL SHALL BE ARRANGED BY THE CONTRACTOR IN COMPLIANCE WITH ALL APPLICABLE ENVIRONMENTAL REGULATIONS. NO SEPARATE MEASUREMENT OR PAYMENT WILL BE MADE FOR COSTS ASSOCIATED WITH OBTAINING A DISPOSAL SITE AND HAUL THERE TO.
11. IF CULTURAL RESOURCES, SUCH AS HISTORIC OR PREHISTORIC ARTIFACTS, OR HUMAN REMAINS ARE DISCOVERED DURING EXCAVATION OR CONSTRUCTION, WORK SHALL CEASE AND THE CONSTRUCTION ENGINEER SHALL NOTIFY THE COUNTY OFFICE OF THE MEDICAL EXAMINER AT (505) 272-3053. IF THE MEDICAL EXAMINER DETERMINES THAT HUMAN REMAINS ARE NOT PRESENT, THE CONSTRUCTION ENGINEER SHALL NOTIFY THE STATE HISTORIC PRESERVATION OFFICER (SHPO) AT 827-6320.

RECORD DRAWINGS



VICINITY MAP J-19-Z
SCALE: NONE

GENERAL NOTES

1. ALL WORK DETAILED ON THESE PLANS, EXCEPT AS OTHERWISE STATED OR PROVIDED HEREON, SHALL BE CONSTRUCTED IN ACCORDANCE WITH CITY OF ALBUQUERQUE STANDARD SPECIFICATIONS FOR PUBLIC WORKS CONSTRUCTION, 1986 EDITION THROUGH UPDATE #9, AND WILL BE REFERRED TO HEREIN AS "STANDARD SPECIFICATIONS".
2. ALL WORK ON THIS PROJECT SHALL BE PERFORMED IN ACCORDANCE WITH APPLICABLE FEDERAL, STATE, AND LOCAL LAWS, ORDINANCES, RULES, AND REGULATIONS CONCERNING CONSTRUCTION SAFETY AND HEALTH.
3. CONTRACTOR SHALL ASSUME THE SOLE AND COMPLETE RESPONSIBILITY FOR THE JOB SITE CONDITIONS DURING THE COURSE OF CONSTRUCTION OF THIS PROJECT, INCLUDING SAFETY OF ALL PERSONS AND PROPERTY. THIS REQUIREMENT SHALL APPLY CONTINUOUSLY AND NOT BE LIMITED TO NORMAL WORKING HOURS. CONTRACTOR SHALL DEFEND, INDEMNIFY, AND HOLD HARMLESS THE OWNER AND ENGINEER FROM ANY AND ALL LIABILITY REAL OR ALLEGED, IN CONNECTION WITH THE PERFORMANCE OF WORK ON THIS PROJECT, EXCEPT LIABILITY ARISING FROM THE SOLE NEGLIGENCE OF THE OWNER OR ENGINEER.
4. AN EXCAVATION/CONSTRUCTION PERMIT WILL BE REQUIRED BEFORE BEGINNING ANY WORK WITHIN CITY RIGHT-OF-WAY.
5. CONTRACTOR SHALL NOTIFY THE CONSTRUCTION ENGINEER (OR PROJECT MANAGER) NOT LESS THAN SEVEN (7) DAYS PRIOR TO STARTING WORK IN ORDER THAT THE CITY SURVEYOR MAY TAKE NECESSARY MEASURES TO INSURE THE PRESERVATION OF SURVEY MONUMENTS. CONTRACTOR SHALL NOT DISTURB PERMANENT SURVEY MONUMENTS WITHOUT THE CONSENT OF THE CITY SURVEYOR AND SHALL NOTIFY THE CITY SURVEYOR AND BEAR THE EXPENSE OF REPLACING ANY THAT MAY BE DISTURBED WITHOUT PERMISSION. ONLY THE CITY SURVEYOR SHALL REPLACE SURVEY MONUMENTS. WHEN A CHANGE IS MADE IN THE FINISHED ELEVATIONS OF THE PAVEMENT OF ANY ROADWAY IN WHICH A PERMANENT SURVEY MONUMENT IS LOCATED, CONTRACTOR SHALL, AT HIS OWN EXPENSE, ADJUST THE MONUMENT COVER TO THE NEW GRADE UNLESS OTHERWISE SPECIFIED. REFER TO STANDARD SPECIFICATIONS SECTION 4.4.
6. EXISTING UTILITY LINE LOCATIONS ARE SHOWN IN AN APPROXIMATE MANNER ONLY, AND LINES MAY EXIST WHERE NONE ARE SHOWN. TWO (2) WORKING DAYS PRIOR TO ANY EXCAVATION, CONTRACTOR SHALL CONTACT NEW MEXICO ONE CALL SYSTEM (280-1990) FOR LOCATION OF EXISTING UTILITIES. CONTRACTOR SHALL THEN EXCAVATE AND VERIFY THE HORIZONTAL AND VERTICAL LOCATIONS OF ALL PERTINENT EXISTING UTILITIES AND/OR OBSTRUCTIONS. SHOULD A CONFLICT EXIST, THE CONTRACTOR SHALL NOTIFY THE ENGINEER SO THE CONFLICT CAN BE RESOLVED WITH A MINIMUM AMOUNT OF DELAY. CONTRACTOR SHALL THEN COORDINATE RELOCATION OF UTILITY LINES WITH UTILITY COMPANIES AS REQUIRED. ANY DAMAGE CAUSED BY FAILURE TO LOCATE, IDENTIFY, AND PRESERVE ANY EXISTING UTILITIES IS THE FULL RESPONSIBILITY OF THE CONTRACTOR.
7. CONTRACTOR SHALL ASSIST THE ENGINEER/INSPECTOR IN THE RECORDING OF DATA ON ALL UTILITY LINES AND ACCESSORIES AS REQUIRED BY THE CITY OF ALBUQUERQUE FOR THE PREPARATION OF "AS BUILT" DRAWINGS. CONTRACTOR SHALL NOT COVER UTILITY LINES AND ACCESSORIES UNTIL ALL DATA HAS BEEN RECORDED.
8. CONTRACTOR SHALL ASSUME FINANCIAL RESPONSIBILITY FOR ANY DAMAGE TO EXISTING PAVEMENT, PAVEMENT MARKINGS, SIGNAGE, CURB AND GUTTER, HANDICAP RAMPS, AND SIDEWALK DURING CONSTRUCTION APART FROM THOSE SECTIONS INDICATED ON THE PLANS, AND SHALL REPAIR OR REPLACE, PER THE STANDARD SPECIFICATIONS, ANY SUCH DAMAGE.
9. CONTRACTOR SHALL MAINTAIN A GRAFFITI-FREE WORK SITE. CONTRACTOR SHALL PROMPTLY REMOVE ANY AND ALL GRAFFITI FROM EQUIPMENT, WHETHER PERMANENT OR TEMPORARY.
10. CONTRACTOR SHALL BE RESPONSIBLE TO PROVIDE AND MAINTAIN ALL CONSTRUCTION SIGNING UNTIL THE PROJECT HAS BEEN ACCEPTED BY THE CITY AND OTHER JURISDICTIONAL AUTHORITIES WHERE APPLICABLE.
11. CONSTRUCTION ACTIVITY SHALL BE LIMITED TO THE PROPERTY AND/OR PROJECT LIMITS SHOWN. ANY DAMAGE TO ADJACENT PROPERTIES RESULTING FROM THE CONSTRUCTION PROCESS IS THE RESPONSIBILITY OF THE CONTRACTOR, INCLUDING ANY SUCH COSTS INCURRED.
12. REMOVALS SHALL BE DISPOSED OF OFF-SITE AND SHALL BE THE RESPONSIBILITY OF THE CONTRACTOR.

BP NO. 2019-01478

Tierra West, LLC
5571 MIDWAY PARK PLACE NE
ALBUQUERQUE, NEW MEXICO 87109
505-858-3100
www.tierrawestllc.com

REV	SHEETS	CITY ENGINEER	DATE	USER	DEPT.	DATE	USER	DEPT.	DATE
ENGINEERS STAMP & SIGNATURE		APPROVALS		ENGINEER		DATE		*****	
		Transportation		8-1-19		7-1-19		APPROVED FOR CONSTRUCTION	
		Water/Wastewater		Robert W. Strong		7/1/19			
		Hydrology		Janet A. Hays		8/24			
		AMAFCA							
Constr. Mngmt.									
Constr. Coord.									
CITY PROJECT NO.		754082		SHEET		OF			
RONALD R. BOHANNAN P.E. #7868				1		6			

Z:\2018\2018055_Maverik_Wyoming & Constitution.dwg Construction\2018055_Tile_Sheet.dwg Jun 20, 2019 - 8:34am

SIGN TYPE R7-B (12"x18")
 SIGN FIELD IS WHITE
 SIGN LETTERING AND BORDER ARE GREEN
 INTERNATIONAL SYMBOL OF ACCESSIBILITY
 IS WHITE ON A BLUE BACKGROUND

REQUIRED LANGUAGE PER
 NMSA 197866-7-352.4C
 (Violators are subject to a
 fine and/or towing)

SIGN TYPE R7-8A (6"x12")
 SIGN FIELD IS WHITE
 SIGN LETTERING AND BORDER ARE GREEN

REQUIRED LANGUAGE
 (VAN ACCESSIBLE)
 PER ANSI 502.7

VAN ACCESSIBLE SPACES
 BOTTOM OF THIS SIGN
 60" MIN. ABOVE GROUND
 ANSI 502.7

VAN ACCESSIBLE
 VAN ACCESSIBLE

2" DIA.x.188 GALV.
 STEEL PIPE

WHEN SIGN IS IN PAVED AREAS,
 USE 4" PIPE BOLLARD FILLED
 W/ CONCRETE AND PAINTED
 TRAFFIC YELLOW

PAVING
 AREA

1'-6" DIA. CONC.
 BASE 3000 PSI

30"
 30"
 30"

SITE DATA

PROPOSED USAGE: GAS CONVENIENCE STORE
 IDO CLASSIFICATION: LIGHT VEHICLE FUELING STATION IDO 4-3(D)(17)
 LOT AREA: 42,250 SF (0.969 ACRES)

BUILDING AREA: 4,300 SF
 STACK: 2X5 (10 UNITS)
 ASPHALT AREA: 22,575 SF

PARKING REQUIRED: 17 SPACES (4 SPACES PER 1,000 SF)
 PARKING PROVIDED: 19 SPACES

HC PARKING REQUIRED: 1 SPACES
 HC PARKING PROVIDED: 1 SPACES (1 VAN ACCESSIBLE)

MC PARKING REQUIRED: 1 SPACES
 MC PARKING PROVIDED: 1 SPACES

BICYCLE PARKING REQUIRED: 2 SPACES
 BICYCLE PARKING PROVIDED: 2 SPACES

LANDSCAPE AREA REQUIRED: 5,692 SF
 LANDSCAPE AREA PROVIDED: 2,247 SF (IDO 5-6(C)(9))
 TOTAL=5,692 SF

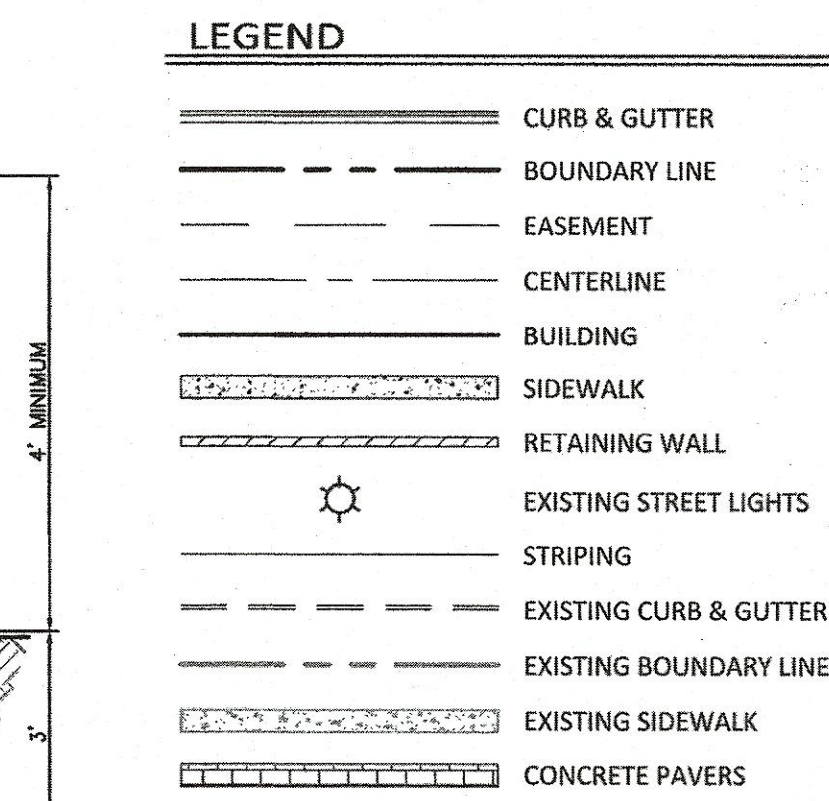
ENGINEER'S
SEAL



A circular professional engineer seal for Ronald R. Bohannan, a registered professional engineer in New Mexico. The seal features the text "RONALD R BOHANNAN" around the top, "NEW MEX CO" in the center, and "REGISTERED PROFESSIONAL ENGINEER" around the bottom. The number "7868" is prominently displayed in the center, with a signature overlaid on it.

RONALD R. BOHANNAN
P.E. #7868

PAGE 3 OF 6



KEYED NOTES

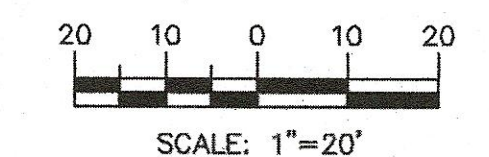
- (1) ACCESSIBLE PARKING PER ADA STANDARDS WITH SIGN
- (2) 6" CURB AND GUTTER (SEE DETAIL SHT. C6)
- (3) 6" HEADER CURB (SEE DETAIL SHT. C6)
- (4) 2' CONCRETE WATERWAY (SEE DETAIL SHT. C6)
- (5) 8' PEDESTRIAN CROSSWALK
- (6) 5' CONCRETE SIDEWALK PER COA DWG 2431
- (7) DUMPSTER W/RECYCLING
- (8) BICYCLE RACKS (SEE DETAIL SHT. C7)
- (9) "PIPE" BOLLARD (SEE DETAIL SHT. C7)
- (10) "HOOP" BOLLARDS (SEE DETAIL SHT. C7)
- (11) UNIDIRECTIONAL HC RAMP (DETAIL THIS SHEET)
- (12) MAVERIK MONUMENT SIGN (SEE ARCH. PLANS)
- (13) GAS PUMP ISLAND (TYP)
- (14) MOTORCYCLE PARKING WITH SIGN (SEE DETAIL SHEET C6)
- (15) CONCRETE SLAB W/CHAMFERED CORNERS
- (16) OIL-WATER SEPARATOR (SEE DETAIL SHT. C8)
- (17) ADA PICNIC TABLE (SEE ARCH. PLANS)
- (18) PICNIC TABLE (SEE ARCH. PLANS)
- (19) CONCRETE PARKING STALL (SEE DETAIL SHT. C6)
- (20) PETROLEUM TRENCH CAP SECTION
(SEE DETAIL SHT. C6)
- (21) XACTAIR AIR STATION (SEE DETAIL SHT. C6)
- (22) TRUNCATED DOMES (SEE DETAIL SHT. C8)
- (23) OFFSITE LANDSCAPING IN ROW (PER IDO 5-6-C(9))
- (24) ASPHALT PAVING (SEE GEOTECH REPORT)
- (25) TRENCH DRAIN (SEE GRADING PLAN SHT. C2)
- (26) UNDERGROUND STORAGE FUEL TANKS
(REFER MECH. PLANS)

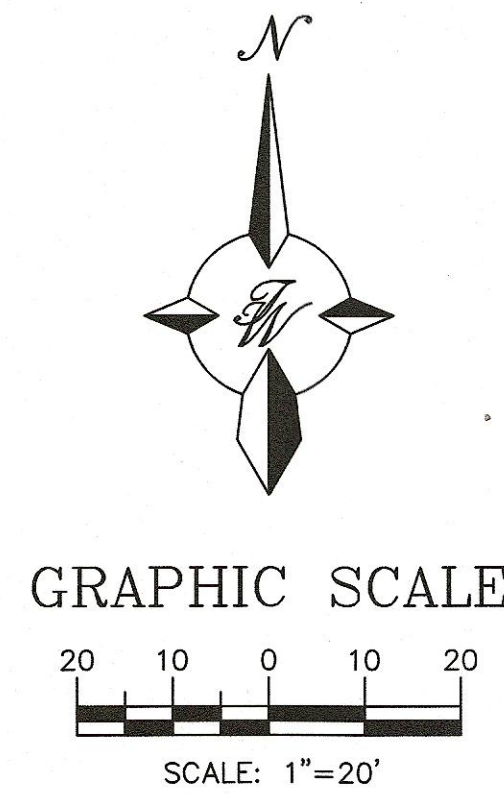
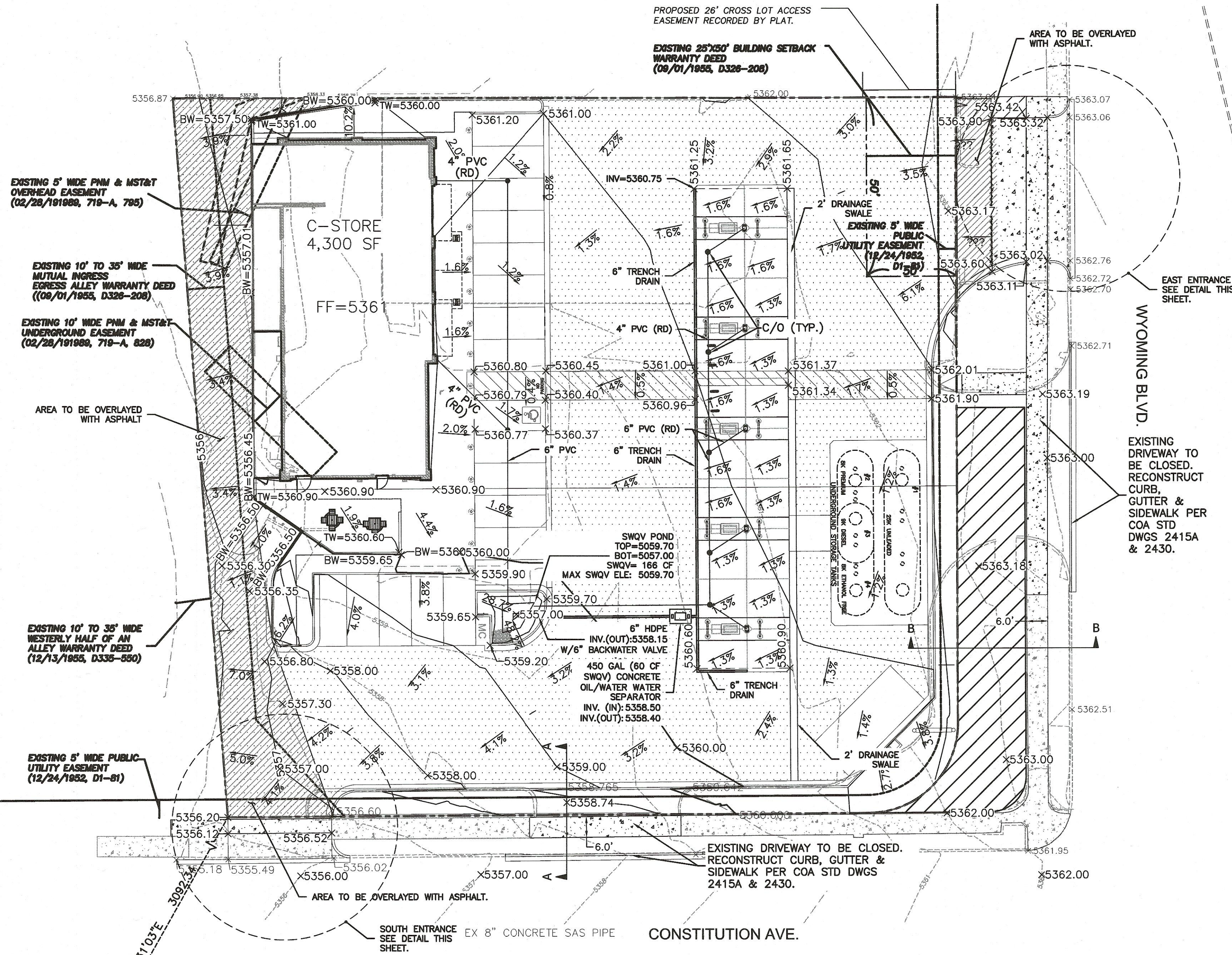
CLEAR SIGHT TRIANGLE NOTE:
LANDSCAPING AND SIGNAGE WILL NOT INTERFERE WITH CLEAR SIGHT REQUIREMENTS. THEREFORE, SIGNS, WALLS , TREES, AND SHRUBBERY BETWEEN 3 AND 8 FEET TALL (AS MEASURED FROM THE GUTTER PAN) WILL NOT BE ACCEPTABLE IN THE CLEAR SIGHT TRIANGLE.

TRAFFIC CIRCULATION LAYOUT

**ALL WHEELCHAIR RAMPS LOCATED
WITHIN THE PUBLIC RIGHT OF WAY
MUST HAVE TRUNCATED DOMES.**

GRAPHIC SCALE





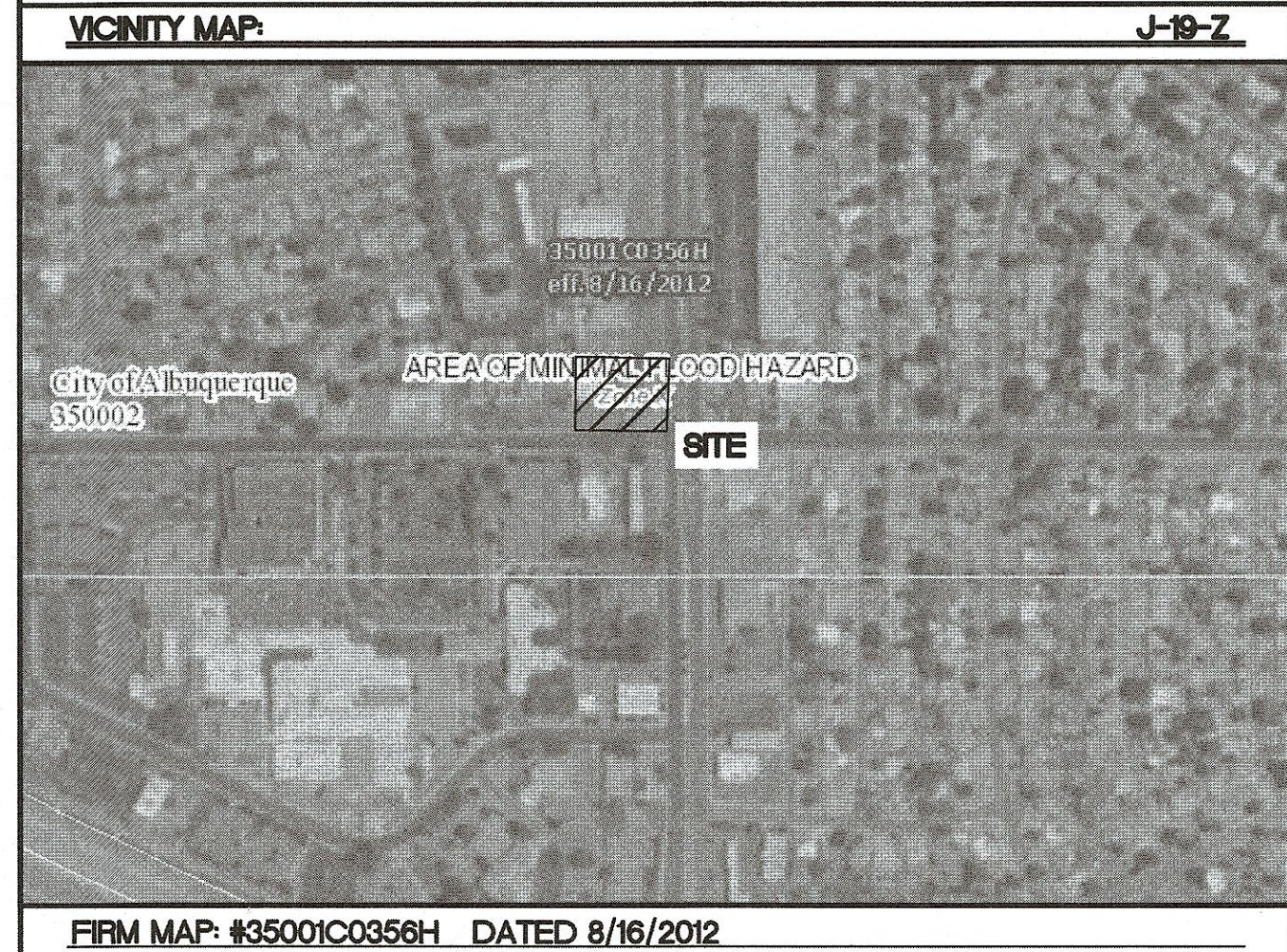
LEGEND	
	CURB & GUTTER
	BOUNDARY LINE
	EASEMENT
	SIDEWALK
	CONTOUR MAJOR
	CONTOUR MINOR
	SPOT ELEVATION
	FLOW ARROW
	EXISTING CURB & GUTTER
	EXISTING CONTOUR MAJOR
	EXISTING CONTOUR MINOR
	EXISTING SPOT ELEVATION
	ASPHALT OVERLAY
	EXISTING PUBLIC SIDEWALK
	NEW PUBLIC SIDEWALK

NOTICE TO CONTRACTORS

1. AN EXCAVATION/CONSTRUCTION PERMIT WILL BE REQUIRED BEFORE BEGINNING ANY WORK WITHIN CITY RIGHT-OF-WAY.
2. ALL WORK DETAILED ON THESE PLANS TO BE PERFORMED, EXCEPT AS OTHERWISE STATED OR PROVIDED HERON, SHALL BE CONSTRUCTED IN ACCORDANCE WITH CITY OF ALBUQUERQUE INTERIM STANDARD SPECIFICATIONS FOR PUBLIC WORKS CONSTRUCTION, 1985.
3. TWO WORKING DAYS PRIOR TO ANY EXCAVATION, CONTRACTOR MUST CONTACT LINE LOCATING SERVICE, 765-1234, FOR LOCATION OF EXISTING UTILITIES.
4. PRIOR TO CONSTRUCTION, THE CONTRACTOR SHALL EXCAVATE AND VERIFY THE HORIZONTAL AND VERTICAL LOCATIONS OF ALL CONNECTIONS. SHOULD A CONFLICT EXIST, THE CONTRACTOR SHALL NOTIFY THE ENGINEER SO THAT THE CONFLICT CAN BE RESOLVED WITH A MINIMUM AMOUNT OF DELAY.
5. BACKFILL COMPACTION SHALL BE ACCORDING TO TRAFFIC/STREET USE.
6. MAINTENANCE OF THESE FACILITIES SHALL BE THE RESPONSIBILITY OF THE OWNER OF THE PROPERTY SERVED.
7. WORK ON ARTERIAL STREETS SHALL BE PERFORMED ON A 24-HOUR BASIS.

EROSION CONTROL NOTES

1. CONTRACTOR IS RESPONSIBLE FOR OBTAINING A TOPSOIL DISTURBANCE PERMIT PRIOR TO BEGINNING WORK.
2. CONTRACTOR IS RESPONSIBLE FOR MAINTAINING RUN-OFF ON SITE DURING CONSTRUCTION.
3. CONTRACTOR IS RESPONSIBLE FOR CLEANING ALL SEDIMENT THAT GETS INTO EXISTING RIGHT-OF-WAY.
4. REPAIR OF DAMAGED FACILITIES AND CLEANUP OF SEDIMENT ACCUMULATIONS ON ADJACENT PROPERTIES AND IN PUBLIC FACILITIES IS THE RESPONSIBILITY OF THE CONTRACTOR.
5. ALL EXPOSED EARTH SURFACES MUST BE PROTECTED FROM WIND AND WATER EROSION PRIOR TO FINAL (CITY) ACCEPTANCE OF ANY PROJECT.



LEGAL DESCRIPTION

LOT 9A, BLOCK 18 SNOW HEIGHTS

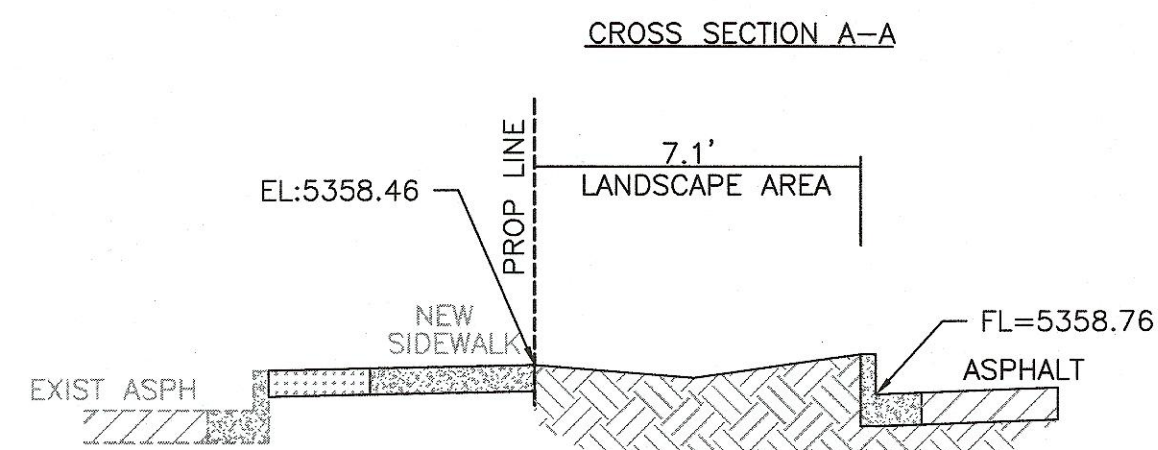
NOTES

THE PARCELS 1401 AND 1415 WYOMING BLVD. NE. WILL BE CONSOLIDATED THROUGH A LOT LINE ELIMINATION RE-PLAT.

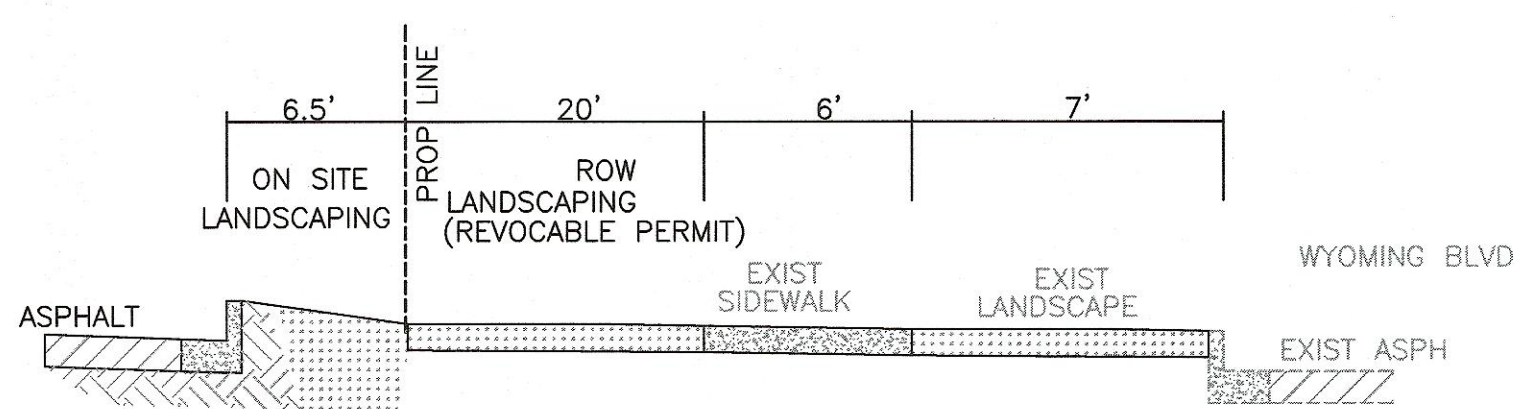
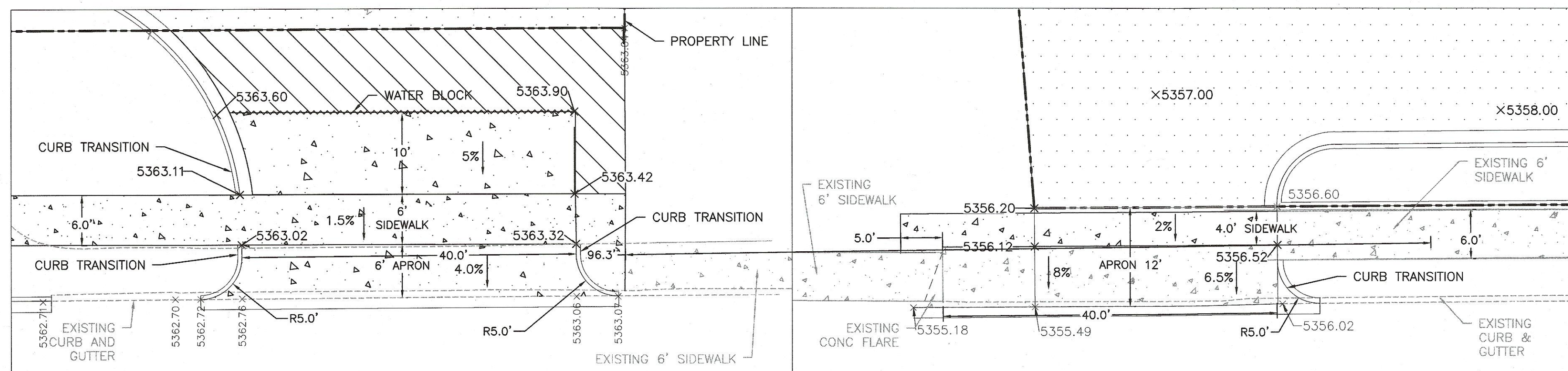
BMP SWQV NOTES

THE SWQV COULD BE MANAGED ONSITE HOWEVER THE DEVELOPER IS CHOOSING PAYMENT IN LIEU. A TOTAL OF 547 CF VOLUME IS NOT BEING CAPTURED AND THEREFORE GENERATES A FEE IN LIEU OF \$4,376.00

A.C.R.S. MONUMENT "17_K19"
STANDARD C.O.A. ALUMINUM DISC
(FOUND IN PLACE)
NEW MEXICO STATE PLANE COORDINATES
(CENTRAL ZONE-N.A.D. 1983)
N=1,487,200.514 US SURVEY FEET
E=1,548,658.688 US SURVEY FEET
PUBLISHED EL=5344.389 US SURVEY FT (NAVD 1988)
GROUND TO GRID FACTOR=0.999657877
DELTA ALPHA ANGLE=-0°10'34.73"



SECTION A-A
NTS



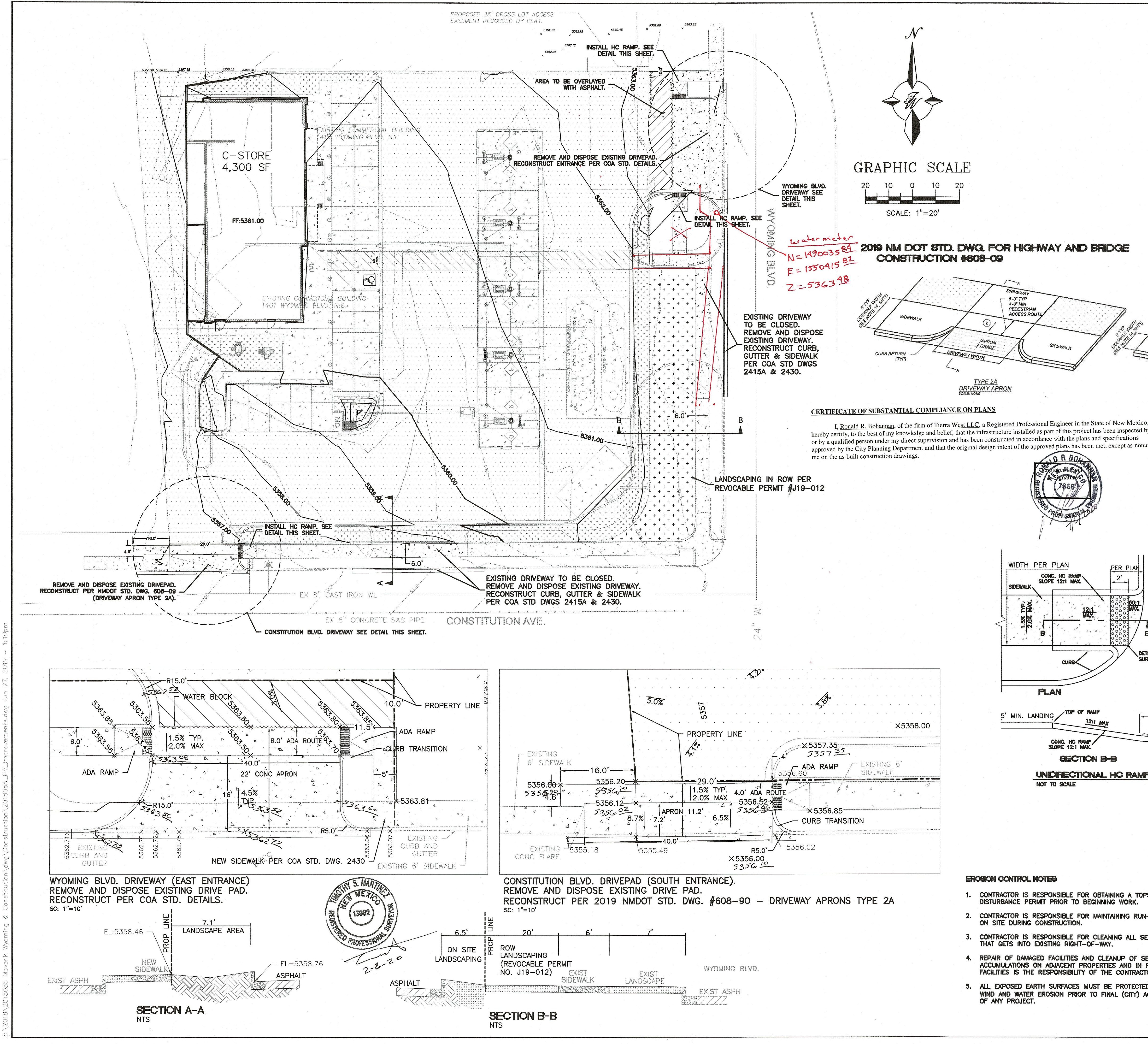
REFERENCE ONLY

ENGINEER'S SEAL RONALD R. BOHANNAN NEW MEXICO 7868 5/20/2019 RONALD R. BOHANNAN P.E. #7868	MAVERIK 1401 WYOMING BLVD. NE GRADING AND DRAINAGE PLAN	DRAWN BY RS
		DATE 5/20/2019
TERRA WEST, LLC 5571 MIDWAY PARK PLACE NE ALBUQUERQUE, NM 87109 (505) 858-3100 www.tierrawestllc.com	SHEET # 4	2018055-GR
		JOB # 2018055

CAUTION:

ALL EXISTING UTILITIES SHOWN WERE OBTAINED FROM RESEARCH, AS-BUILTS, SURVEYS OR INFORMATION PROVIDED BY OTHERS. IT SHALL BE THE SOLE RESPONSIBILITY OF THE CONTRACTOR TO CONDUCT ALL NECESSARY FIELD INVESTIGATIONS PRIOR TO AND INCLUDING ANY EXCAVATION, TO DETERMINE THE ACTUAL LOCATION OF UTILITIES AND OTHER IMPROVEMENTS, PRIOR TO STARTING THE WORK. ANY CHANGES FROM THIS PLAN SHALL BE COORDINATED WITH AND APPROVED BY THE ENGINEER.





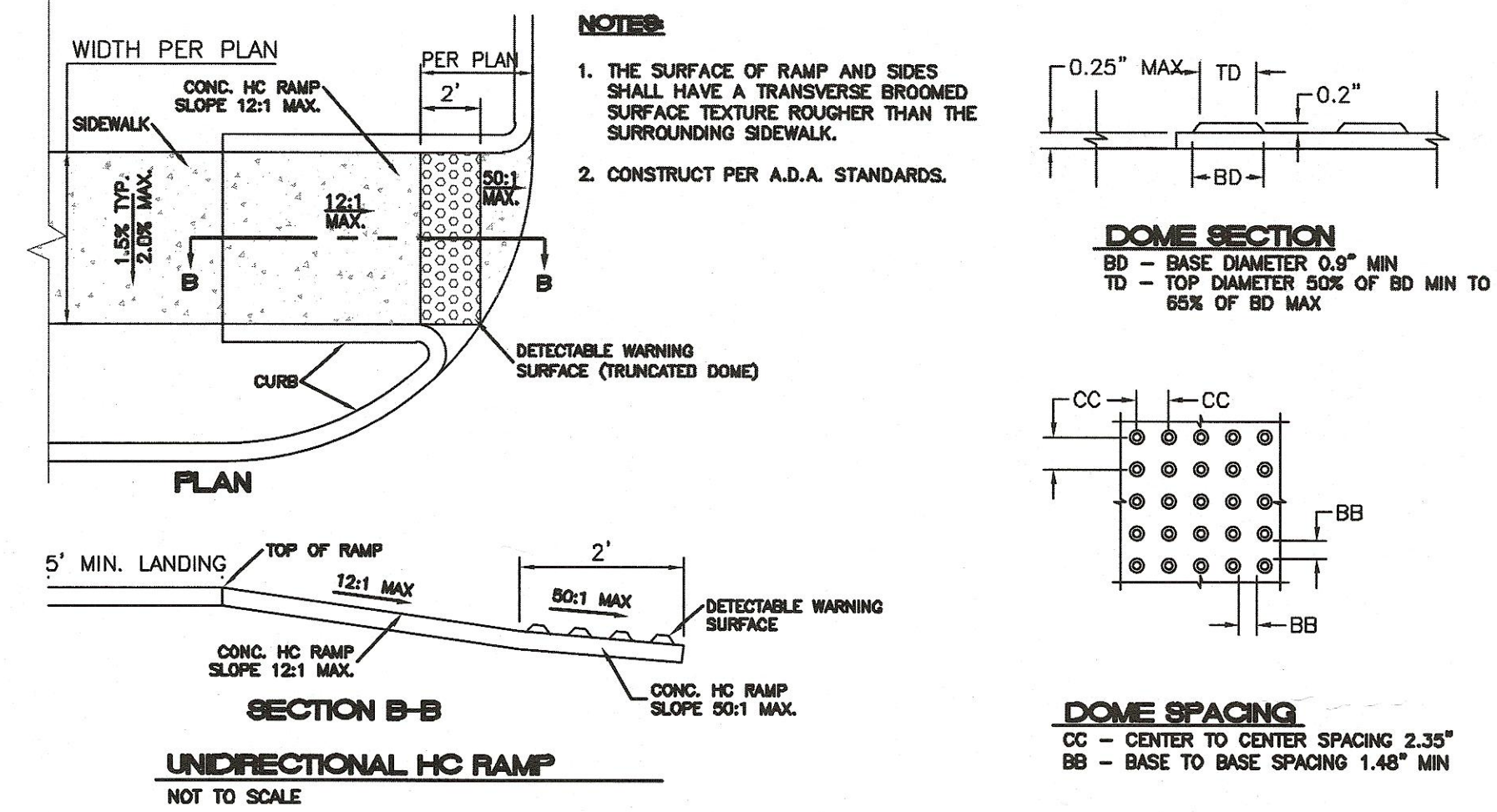
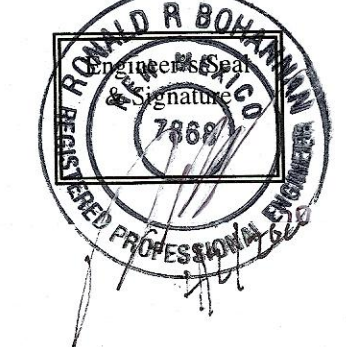
LEGEND

	CURB & GUTTER
	BOUNDARY LINE
	EASEMENT
	SIDEWALK
	CONTOUR MAJOR
	CONTOUR MINOR
	SPOT ELEVATION
	FLOW ARROW
	EXISTING CURB & GUTTER
	EXISTING CONTOUR MAJOR
	EXISTING CONTOUR MINOR
	EXISTING SPOT ELEVATION
	ASPHALT OVERLAY
	EXISTING PUBLIC SIDEWALK
	NEW PUBLIC SIDEWALK/DRIVEWAY
	ROW LANDSCAPING

- NOTICE TO CONTRACTORS**
1. AN EXCAVATION/CONSTRUCTION PERMIT WILL BE REQUIRED BEFORE BEGINNING ANY WORK WITHIN CITY RIGHT-OF-WAY.
 2. ALL WORK DETAILED ON THESE PLANS TO BE PERFORMED, EXCEPT AS OTHERWISE STATED OR PROVIDED HEREON, SHALL BE CONSTRUCTED IN ACCORDANCE WITH CITY OF ALBUQUERQUE INTERIM STANDARD SPECIFICATIONS FOR PUBLIC WORKS CONSTRUCTION, 1985.
 3. TWO WORKING DAYS PRIOR TO ANY EXCAVATION, CONTRACTOR MUST CONTACT LINE LOCATING SERVICE, 785-1234, FOR LOCATION OF EXISTING UTILITIES.
 4. PRIOR TO CONSTRUCTION, THE CONTRACTOR SHALL EXCAVATE AND VERIFY THE HORIZONTAL AND VERTICAL LOCATIONS OF ALL CONNECTIONS. SHOULD A CONFLICT EXIST, THE CONTRACTOR SHALL NOTIFY THE ENGINEER SO THAT THE CONFLICT CAN BE RESOLVED WITH A MINIMUM AMOUNT OF DELAY.
 5. BACKFILL COMPACTION SHALL BE ACCORDING TO TRAFFIC/STREET USE.
 6. MAINTENANCE OF THESE FACILITIES SHALL BE THE RESPONSIBILITY OF THE OWNER OF THE PROPERTY SERVED.
 7. WORK ON ARTERIAL STREETS SHALL BE PERFORMED ON A 24-HOUR BASIS.

CERTIFICATE OF SUBSTANTIAL COMPLIANCE ON PLANS

I, Ronald R. Bohannon, of the firm of Tierra West LLC, a Registered Professional Engineer in the State of New Mexico, do hereby certify, to the best of my knowledge and belief, that the infrastructure installed as part of this project has been inspected by me or by a qualified person under my direct supervision and has been constructed in accordance with the plans and specifications approved by the City Planning Department and that the original design intent of the approved plans has been met, except as noted by me on the as-built construction drawings.



- EROSION CONTROL NOTES**
1. CONTRACTOR IS RESPONSIBLE FOR OBTAINING A TOPSOIL DISTURBANCE PERMIT PRIOR TO BEGINNING WORK.
 2. CONTRACTOR IS RESPONSIBLE FOR MAINTAINING RUN-OFF ON SITE DURING CONSTRUCTION.
 3. CONTRACTOR IS RESPONSIBLE FOR CLEANING ALL SEDIMENT THAT GETS INTO EXISTING RIGHT-OF-WAY.
 4. REPAIR OF DAMAGED FACILITIES AND CLEANUP OF SEDIMENT ACCUMULATIONS ON ADJACENT PROPERTIES AND IN PUBLIC FACILITIES IS THE RESPONSIBILITY OF THE CONTRACTOR.
 5. ALL EXPOSED EARTH SURFACES MUST BE PROTECTED FROM WIND AND WATER EROSION PRIOR TO FINAL (CITY) ACCEPTANCE OF ANY PROJECT.

TIERRA WEST, LLC
5571 MIDWAY PARK PLACE NE
ALBUQUERQUE, NM 87109
(505)858-3100
www.tierrowestllc.com

CITY OF ALBUQUERQUE
PUBLIC WORKS DEPARTMENT
ENGINEERING GROUP

MAVERIK STORES
PAVING IMPROVEMENTS
CONSTITUTION AVE. AND WYOMING BLVD

TITLE:

DESIGN REVIEW COMMITTEE
APPROVED
JUL 01 2019
DESIGN REVIEW COMMITTEE

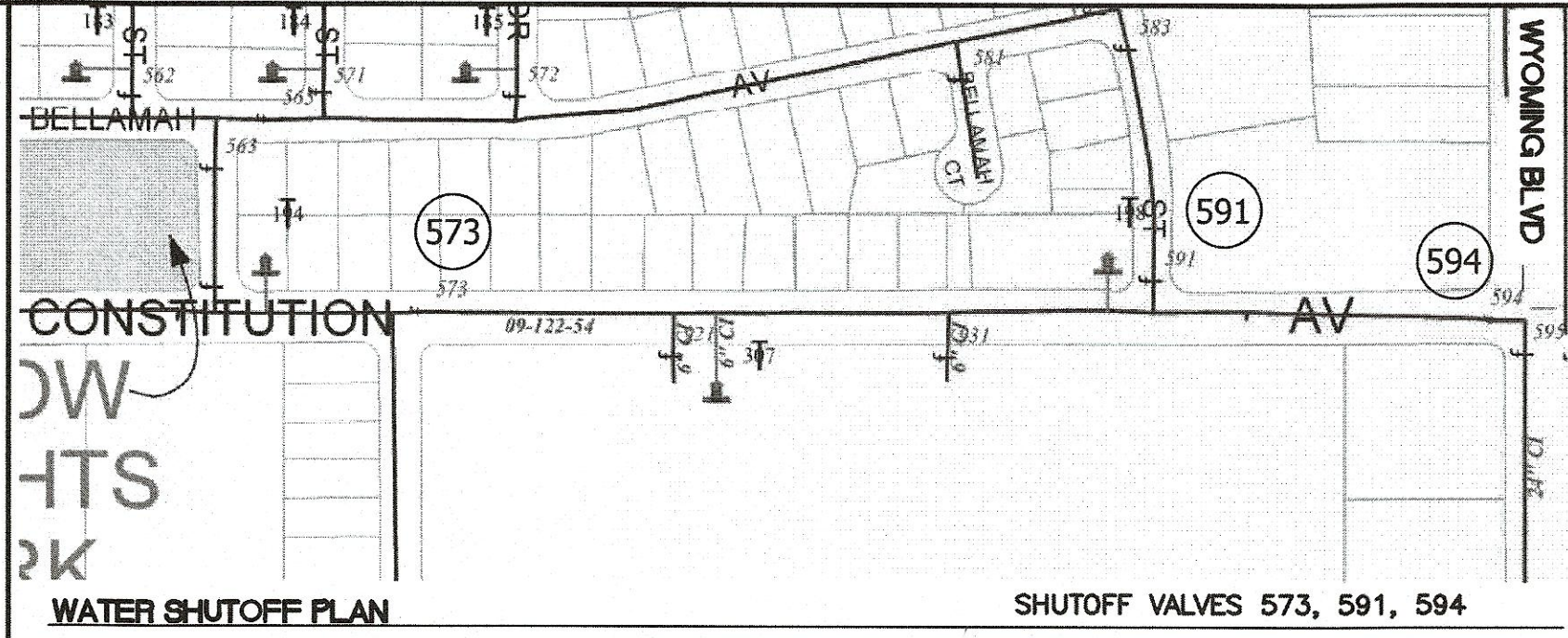
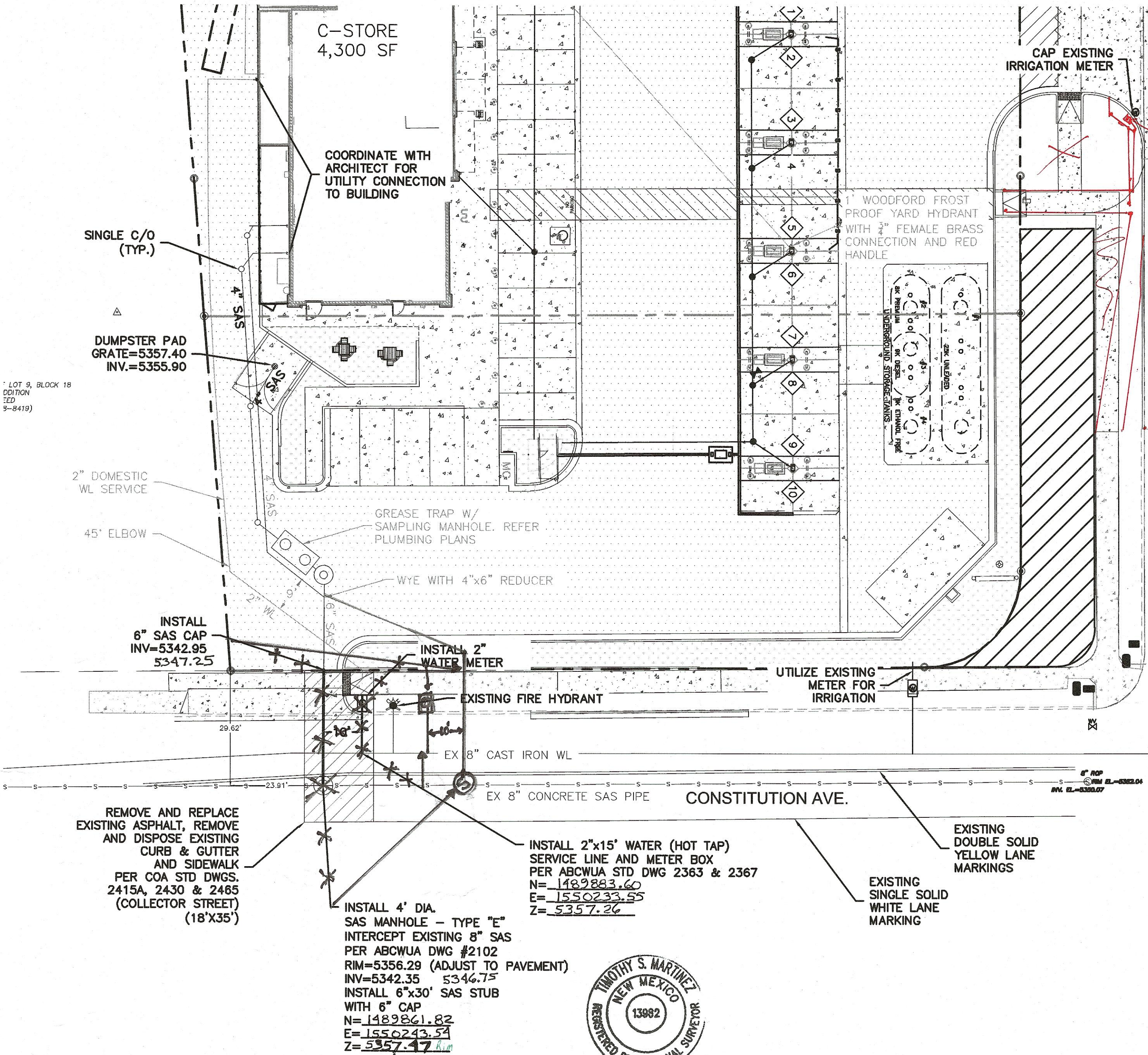
CITY ENGINEER
APPROVED
SEP 20 2019
CITY ENGINEER

DESIGNED BY: RS
DRAWN BY: BUF
DRAWING NAME: 2018055_PV_IMPROVEMENTS
CHECKED BY: RB

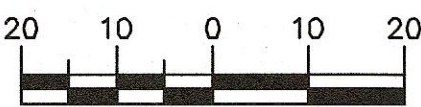
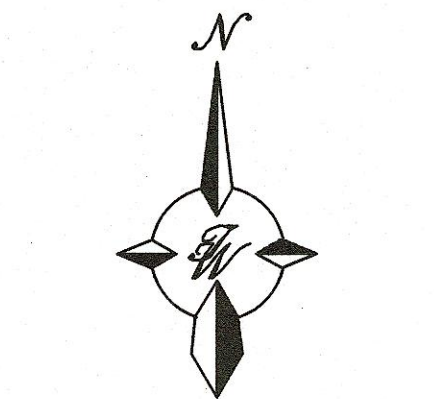
DATE: 06/04/2019
DATE: 06/04/2019
JOB NO.: 2018055
DATE: 06/18/2019

CITY PROJECT NO. 754082
ZONE MAP NO. J-19-Z
SHEET 5 OF 6

2:\2018\2018055_Maverik_Wyoming & Constitution.dwg Construction\2018055_PV_Improvements.dwg Jun 27, 2019 1:10pm



Water meter
N= 1490035.89
E= 1550415.82
Z= 5763.98



SCALE: HORIZ. 1"=20'

THE CONTRACTOR SHALL COORDINATE WITH THE WATER AUTHORITY SEVEN (7) DAYS IN ADVANCE OF PERFORMING WORK THAT WILL AFFECT THE PUBLIC WATER OR SANITARY SEWER INFRASTRUCTURE. WORK REQUIRING SHUTOFF OF FACILITIES DESIGNATED AS MASTER PLAN FACILITIES MUST BE COORDINATED WITH THE WATER AUTHORITY 14 DAYS IN ADVANCE OF PERFORMING SUCH WORK. ONLY WATER AUTHORITY CREWS ARE AUTHORIZED TO OPERATE PUBLIC VALVES. SHUTOFF REQUESTS MUST BE MADE ONLINE AT [HTTP://ABCWUA.ORG/CONTENT/VIEW/463/729/](http://abcwua.org/content/view/full/463/729/).

LEGEND

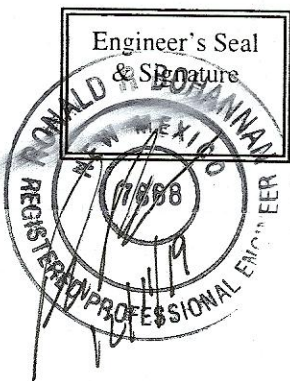
- CURB & GUTTER
- BOUNDARY LINE
- SIDEWALK
- EXISTING CURB & GUTTER
- STORM SEWER LINE
- 6" SAS
- 6" WL
- WATERLINE
- SINGLE CLEAN OUT
- DOUBLE CLEAN OUT
- EXISTING SD MANHOLE
- EXISTING INLET
- EXISTING SAS MANHOLE
- EXISTING FIRE HYDRANT
- EXISTING WATER VALVE
- EXISTING OVERHEAD UTILITIES
- EXISTING UNDERGROUND UTILITIES
- EXISTING GAS
- EXISTING SANITARY SEWER LINE
- EXISTING WATER LINE
- EXISTING STORM SEWER LINE

NOTES

- REPLACE ANY PAVEMENT MARKINGS IN KIND WITH THERMOPLASTIC
- EXTEND PAVEMENT REMOVAL TO LANE EDGE TO KEEP LONGITUDINAL JOINT OUT OF WHEELPATH

CERTIFICATE OF SUBSTANTIAL COMPLIANCE ON PLANS

I, Ronald R. Bohannon, of the firm of Tierra West LLC, a Registered Professional Engineer in the State of New Mexico, do hereby certify, to the best of my knowledge and belief, that the infrastructure installed as part of this project has been inspected by me or by a qualified person under my direct supervision and has been constructed in accordance with the plans and specifications approved by the City Planning Department and that the original design intent of the approved plans has been met, except as noted by me on the as-built construction drawings.



GENERAL UTILITY NOTES

- ALL WATER AND SEWER UTILITY WORK TO BE DONE IN ACCORDANCE WITH COA STANDARDS AND SPECIFICATIONS LATEST EDITION.
- 4' MINIMUM BURY REQUIRED FOR ALL UTILITIES UNLESS OTHERWISE NOTED.
- REFERENCE ARCHITECTURAL PLANS FOR WATER LINE RISER LOCATIONS.
- CLEAN OUTS ARE TO BE BUILT PER UNIFORM PLUMBING CODE STANDARDS.
- ALL PLUMBING PIPE MATERIAL TO BE USED PER UPC.
- FIRE LINE AND DOMESTIC WATERLINE MUST HAVE BACKFLOW PREVENTORS PER UPC. IF BACKFLOW PREVENTOR IS INSTALLED EXTERIOR OF BUILDING A HOT BOX SHALL BE INSTALLED AND USED.
- ALL EX. SD INLETS AND MH SHALL HAVE CONCRETE COLLARS POURED AND BE ADJUSTED TO FINISHED GRADE.
- ALL EXCAVATION, TRENCHING AND SHORING ACTIVITIES MUST BE CARRIED-OUT IN ACCORDANCE WITH OSHA 29 CFR 1926.650 SUBPART P.
- ALL UTILITY DISTANCES SHOWN ARE FOR REFERENCE ONLY.

- PNM HAS NUMEROUS ELECTRIC FACILITIES AT THIS SITE CURRENTLY SERVING EXISTING CUSTOMERS. THE APPLICANT SHALL COORDINATE WITH PNM REGARDING THESE EXISTING FACILITIES. ANY RELOCATION, CHANGES OR REALIGNMENT OF EXISTING ELECTRIC UTILITIES WILL BE THE DEVELOPER EXPENSE. IN SOME CASES, RELOCATION OR CHANGES TO EXISTING FACILITIES MAY NOT BE FEASIBLE DUE TO PHYSICAL, USE OR SAFETY CLEARANCE CONSTRAINTS.
- PNM WILL REVIEW ALL TECHNICAL NEEDS, ISSUES AND SAFETY CLEARANCES FOR ITS ELECTRIC POWER SYSTEMS. ANY EXISTING AND PROPOSED PUBLIC UTILITY EASEMENTS SHALL BE INDICATED ON THE SITE PLAN UTILITY SHEET PRIOR TO DRB REVIEW. PNM'S STANDARD FOR PUBLIC UTILITY EASEMENTS IS 10 FEET IN WIDTH TO ENSURE ADEQUATE, SAFE CLEARANCES.
- SCREENING SHALL BE DESIGNED TO ALLOW FOR ACCESS TO UTILITY FACILITIES. IT IS NECESSARY TO PROVIDE ADEQUATE CLEARANCE OF TEN FEET SURROUNDING ALL GROUND-MOUNTED UTILITIES FOR SAFE OPERATION, MAINTENANCE AND REPAIR PURPOSES.
- ALL BUILDINGS - CONSTRUCTION TYPE IS II-B

14. CONTRACTOR SHALL CONTACT TRAVIS PEA COCK, ABCWUA (505-289-3434) FOR INSPECTION OF THE ON-SITE GREASE TRAP.



TIERRA WEST, LLC 5571 MIDWAY PARK PLACE NE ALBUQUERQUE, NM 87109 (505)858-3100 www.tierrowestllc.com	
CITY OF ALBUQUERQUE PUBLIC WORKS DEPARTMENT ENGINEERING GROUP	
TITLE: MAVERIK STORES UTILITY IMPROVEMENTS CONSTITUTION AVE. AND WYOMING BLVD	
DESIGN REVIEW COMMITTEE APPROVED JUL 01 2019 DESIGN REVIEW COMMITTEE	CITY ENGINEER APPROVAL APPROVED SEP 20 2019 CITY ENGINEER
CITY PROJECT NO. 754082	ZONE MAP NO. J-19-Z
SHEET 6	OF 6