



CITY OF ALBUQUERQUE  
PUBLIC WORKS DEPARTMENT  
PLANS FOR CONSTRUCTION  
COORS/RIO BRAVO  
SEWER PLUG VALVE  
AND VAULT

INDEX OF DRAWINGS

SHEET NO.	TITLE
1	TITLE SHEET, VICINITY MAP, SHEET INDEX
2	GENERAL NOTES & LEGEND
3	PLAN AND PROFILE SEWER LINE STA 10+00 TO STA 13+82.47 AND DETAILS
4	DETAILS

Acknowledge Receipt of  
APPROVAL OF RECORD DRAWINGS  
CHIEF CONSTRUCTION ENGINEER  
DATE 6/25/2007

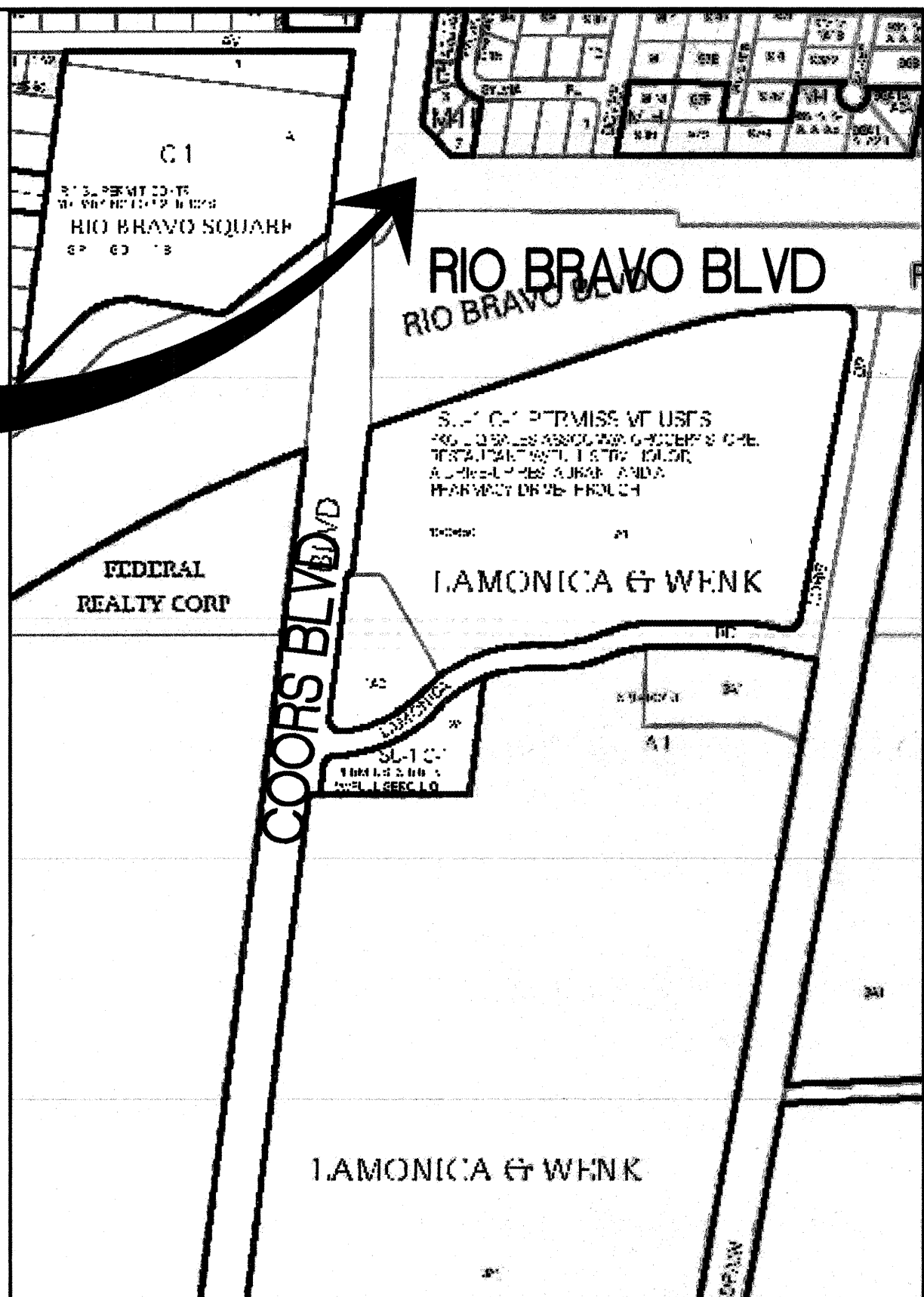
RECORD DRAWINGS

VICINITY MAP

PROJECT  
LOCATION



MAP NO. P-10-Z



UTILITY COMPANY CONTACTS

CITY OF ALBUQUERQUE  
(WATER & SEWER)

BILL BALCH  
Engineer/Utility Development  
P.O. Box 1293  
Albuquerque, New Mexico 87103  
(505) 768-2729

PNM-ELECTRIC

JIM HILL  
4201 Edith Blvd., NE MS-ES61  
Albuquerque, New Mexico 87107  
(505) 241-3402

PNM-GAS CO.

JOE DUNLOP  
Project Engineer  
4625 Edith Blvd., NE  
Albuquerque, New Mexico 87107  
(505) 241-7771

QWEST/US WEST

DAVID MULLER  
Capacity Provisioning Specialist  
400 Tijeras Ave. NW, Suite 710  
Albuquerque, New Mexico 87102  
(505) 245-8706

QWEST LONG DISTANCE

LARRY KELLY  
Senior Operations Tech  
400 Tijeras Ave. NW, Suite 570  
Albuquerque, New Mexico 87102  
(505) 246-0501

AT&T

DAVID CROWL  
Resource Supervisor  
111 Third St., NW  
Albuquerque, New Mexico 87103  
(505) 842-2911

MCI WORLDCOM

ANDY DARNELL  
Operation Manager  
6001 Midway Park NE  
Albuquerque, New Mexico 87109  
(505) 346-4470

COMCAST CABLE

RITA ERICKSON  
Planning and Design Supervisor  
4611 Montbel Pl. NE  
Albuquerque, New Mexico 87107  
(505) 761-6235

NEW MEXICO UTILITIES (NMUI)

STEVE BATES  
Operation Supervisor  
4700 Irving Blvd. NW, Suite 201  
Albuquerque, New Mexico 87114  
(505) 898-2661 Ext. 48

OSO GRANDE TECHNOLOGIES, INC.

BUD LENSING  
5921 Jefferson St. NE  
Albuquerque, New Mexico 87109  
(505) 345-6555

McLeod USA

RICK MUELLER  
Supervisor of Outside Techs.  
505 Marquette Ave. NE, Suite 1600  
Albuquerque, New Mexico 87102  
(505) 244-3161

XSPEDIUS MANAGEMENT CO.

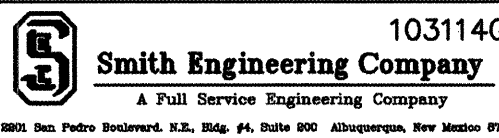
STEVE BENJAMIN  
Operations Support Manager  
505 Marquette Ave. NW, Suite 1605  
Albuquerque, New Mexico 87102  
(505) 998-2220

TIME WARNER TELECOM

ROYAL HARRISON  
Plant Manager  
3830 Singer Blvd. NE, Suite 1000  
Albuquerque, New Mexico 87109  
(505) 938-7339

LEVEL 3 COMMUNICATIONS, LLC

STEVE GILMAN  
Resource Supervisor  
1025 Eldorado Blvd.  
Broomfield, Colorado 80021  
(720) 888-5920



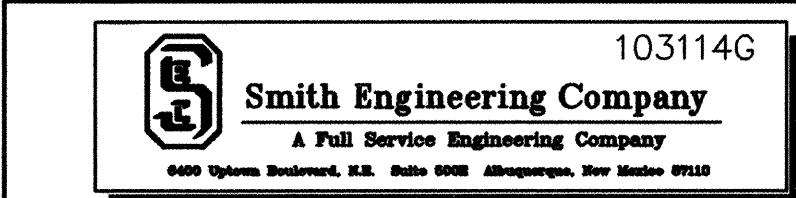
REV.	SHEETS	CITY ENGINEER	DATE	USER DEPARTMENT	DATE	USER DEPARTMENT	DATE
ENGINEERS STAMP & SIGNATURE		APPROVED	ENGINEER	DATE	APPROVED FOR CONSTRUCTION		
		DRC Chairman					
		Transportation					
		Water/Wastewater					
		Hydrology					
		CIP					
		Constr. Coord.			CITY ENGINEER		
		Parks			DATE		
		PROJECT NUMBER		7572.32		SHEET 1 OF 4	

Z:/PROJECTS/2003/103114/002SENNOTE.DWG

EXISTING FEATURES LEGEND:

- 1 THE SPECIFICATIONS USED FOR THIS PROJECT ARE THE CITY OF ALBUQUERQUE STANDARD SPECIFICATIONS FOR PUBLIC WORKS CONSTRUCTION, 1986 EDITION, UPDATE, THROUGH UPDATE NO.7.
- 2 FIVE (5) WORKING DAYS PRIOR TO BEGINNING CONSTRUCTION, THE CONTRACTOR WILL SUBMIT A DETAILED CONSTRUCTION SCHEDULE TO THE CITY CONSTRUCTION COORDINATION DIVISION. TWO (2) DAYS PRIOR TO CONSTRUCTION, THE CONTRACTOR WILL OBTAIN A BARRICADING PERMIT FROM THE CONSTRUCTION COORDINATION DIVISION. CONTRACTOR SHALL NOTIFY BARRICADE ENGINEER (924-3400) PRIOR TO OCCUPYING AN INTERSECTION. REFER TO SECTION 19 OF STANDARD SPECIFICATIONS FOR PUBLIC WORKS.
- 3 THE CONTRACTOR WILL NOTIFY THE FIELD ENGINEER NOT LESS THAN SEVEN (7) DAYS PRIOR TO STARTING WORK, IN ORDER THAT THE CITY SURVEYOR MAY TAKE NECESSARY MEASURES TO INSURE THE PRESERVATION OF SURVEY MONUMENTS. THE CONTRACTOR WILL NOTIFY THE ENGINEER IF A MONUMENT IS DISTURBED. REPLACEMENT WILL BE DONE ONLY BY THE CITY SURVEY SECTION. WHEN A CHANGE IS MADE IN THE FINISHED ELEVATION OF THE PAVEMENT OF ANY ROADWAY IN WHICH A PERMANENT SURVEY MONUMENT IS LOCATED, CONTRACTOR WILL, AT HIS OWN EXPENSE, ADJUST THE MONUMENT COVER TO THE NEW GRADE UNLESS OTHERWISE SPECIFIED. REFER TO SECTION 4 OF STANDARD SPECIFICATIONS FOR PUBLIC WORKS.
- 4 THE CONTRACTOR WILL BE RESPONSIBLE FOR DISPOSING OF ALL DEBRIS, INCLUDING, BUT NOT LIMITED TO HAZARDOUS WASTE AT DISPOSAL SITES APPROVED BY GOVERNMENTAL AGENCIES REGULATING THE DISPOSAL OF SUCH MATERIALS.
- 5 ALL EXCAVATION, TRENCHING AND SHORING ACTIVITIES MUST BE CARRIED OUT IN ACCORDANCE WITH OSHA 29 CFR 1926.650 SUBPART P.
- 6 ALL SIGNS AND CODING WILL BE IN ACCORDANCE WITH THE "MANUAL OF UNIFORM TRAFFIC CONTROL DEVICES FOR STREETS AND HIGHWAYS" CURRENT EDITION PUBLISHED BY THE U.S. DEPARTMENT OF TRANSPORTATION.
- 7 THE CONTRACTOR IS TO EXERCISE CARE TO AVOID DISTURBING ANY EXISTING UNDERGROUND UTILITIES. IT WILL BE HIS OR HER RESPONSIBILITY TO COORDINATE WITH THE UTILITY COMPANIES IN ORDER TO PREVENT ANY SERVICE DISRUPTION. SEE SECTION 18 "UTILITIES", CITY OF ALBUQUERQUE, STANDARD SPECIFICATIONS FOR CONTRACTOR REQUIREMENTS.
- 8 THE CONTRACTOR WILL NOTIFY NEW MEXICO ONE CALL SYSTEM 260-1990 TWO (2) WORKING DAYS PRIOR TO COMMENCING WORK IN NEW AREAS.
- 9 CONTRACTOR WILL MAKE ALL WATER VALVES AND MANHOLES ACCESSIBLE TO THE CITY AT ALL TIMES.
- 10 CONTRACTOR WILL CONFINE HIS OR HER WORK WITHIN THE CONSTRUCTION EASEMENT LIMITS AND/OR RIGHT-OF-WAY, OR PROVIDE COPIES OF AGREEMENTS WITH ADJACENT LANDOWNERS TO THE CITY OF ALBUQUERQUE.
- 11 MINIMUM BOTTOM WIDTH OF TRENCHES FOR RIGID PIPE SHALL BE EQUAL TO THE OUTSIDE DIAMETER PLUS 16 INCHES.
- 12 BEDDING MATERIAL SHALL BE CLASS I, II, OR III OR AS NOTED ON PLANS.
- 13 THE CONTRACTOR AGREES TO TAKE NECESSARY SAFETY PRECAUTIONS AS REQUIRED BY FEDERAL, STATE AND LOCAL AUTHORITIES TO PROTECT PEDESTRIAN AND VEHICULAR TRAFFIC IN THE CONSTRUCTION AREA, WHICH INCLUDE BUT ARE NOT LIMITED TO: MAINTAINING ADEQUATE WARNING SIGNS, BARRICADES, LIGHTS, GUARD FENCES, WALKS AND BRIDGES.
- 14 ALL STRUCTURAL CONCRETE TO BE 4000 PSI UNLESS OTHERWISE NOTED ON PLANS.
- 15 ALL REINFORCING STEEL TO BE GRADE 60.
- 16 PRIOR TO CONSTRUCTION, THE CONTRACTOR WILL EXCAVATE AND VERIFY THE HORIZONTAL AND VERTICAL LOCATIONS OF ALL POTENTIAL CONFLICTING UTILITIES. SHOULD A CONFLICT EXIST BETWEEN THE FIELD INFORMATION AND THE PLANS, THE CONTRACTOR WILL NOTIFY THE CITY FIELD ENGINEER SO THE CONFLICT CAN BE RESOLVED WITH MINIMUM AMOUNT OF DELAY.
- 17 THE CONTRACTOR WILL CONTACT THE CITY OF ALBUQUERQUE TRAFFIC DIVISION 764-1599, ONE (1) WEEK IN ADVANCE OF ANY CHANGES REQUIRED IN THE TRAFFIC SIGNALIZATION OF THIS PROJECT. ALL WORK ASSOCIATED WITH NEW TRAFFIC SIGNALIZATION SHALL BE THE RESPONSIBILITY OF THE CONTRACTOR.
- 18 ALL EXCAVATED MATERIAL THAT IS NOT REQUIRED TO BE REUSED MUST BE REMOVED FROM THE PROJECT AREA WITHIN FOUR DAYS OF EXCAVATION. SPOIL PILES WILL BE ALLOWED ONLY AS DIRECTED BY THE CITY FIELD ENGINEER.
- 19 THE CONTRACTOR WILL COORDINATE THE CONSTRUCTION ACTIVITIES WITH ALL OTHER CONTRACTORS AND UTILITY COMPANIES WORKING IN THE SAME AREA. THE CONTRACTOR MAY BE REQUIRED TO RESCHEDULE THEIR ACTIVITIES TO ALLOW UTILITY CREWS TO PERFORM THEIR REQUIRED WORK. NO ADDITIONAL COMPENSATION WILL BE ALLOWED FOR DELAYS OR INCONVENIENCE CAUSED BY UTILITY COMPANY WORK CREWS. THE CONTRACTOR MAY BE ALLOWED AN EXTENSION OF THE CONTRACT TIME, DUE TO DELAYS, AS DELINEATED IN THE CITY OF ALBUQUERQUE STANDARD SPECIFICATIONS, SECTION 12.
- 20 ALL CONSTRUCTION EASEMENTS ON PRIVATE PROPERTY WILL BE OBTAINED BY THE CONTRACTOR PRIOR TO THE BEGINNING OF CONSTRUCTION.
- 21 ALL TRAFFIC CONTROL DEVICES REQUIRED FOR DRIVEWAY CLOSURES, UTILITY CONSTRUCTION OR FOR OTHER REASONS AND NOT SHOWN ON THE SIGNING PLANS WILL BE FURNISHED BY THE CONTRACTOR AND WILL BE PAID AS SPECIFIED IN THE TECHNICAL SPECIFICATIONS AND BID PROPOSAL. PRIOR TO PLACING THE TRAFFIC CONTROL DEVICES, THE CONTRACTOR WILL NOTIFY THE AFFECTED OWNERS IN ACCORDANCE WITH THE SPECIFICATIONS. CONTRACTOR MUST MAKE PROVISIONS TO PROVIDE ACCESS TO PROPERTIES. REFER TO SECTION 19 OF THE STANDARD SPECIFICATIONS.
- 22 ALL UTILITY LINES WHICH ARE NOT SPECIFICALLY DESIGNATED TO BE REMOVED AND REPLACED ON THE PLANS, WILL BE MAINTAINED IN SERVICE. SHORING, SHEETING AND OTHER MEANS OF SUPPORT SHALL BE EMPLOYED BY THE CONTRACTOR TO PREVENT DAMAGE OR LOSS OF THESE EXISTING UTILITIES. BEAM AND CABLE OR OTHER ADEQUATE SUPPORTS WILL BE USED FOR TEMPORARY SUPPORT OF ALL UTILITY LINES WHICH CROSS THE TRENCH. ANY DAMAGE TO EXISTING UTILITIES WILL PROMPTLY BE REPAIRED AT THE CONTRACTOR'S EXPENSE. THE CONTRACTOR WILL NOTIFY THE ENGINEER IMMEDIATELY OF ANY SIGNIFICANT DEVIATION OF EXPOSED UTILITIES FROM THE LOCATIONS SHOWN ON THE PLANS SO THAT CONFLICTS CAN BE RESOLVED IN A TIMELY MANNER.
- 23 THE CONTRACTOR WILL ASSUME RESPONSIBILITY FOR ANY DAMAGE TO EXISTING COA INFRASTRUCTURE (C & G, PAVING, ETC.) DURING CONSTRUCTION, APART FROM THOSE SECTIONS INDICATED FOR REMOVAL ON THE PLANS, AND WILL REPAIR OR REPLACE SAME AT HIS OR HER OWN EXPENSE. HE/SHE WILL SUITABLY PROTECT THE CURB AND GUTTER FROM INCIDENTAL SPLASHING DURING THE TACK COAT APPLICATION AND WILL BE RESPONSIBLE FOR CLEANING SAME AT HIS OWN COST SHOULD SPLASHING OCCUR.
- 24 ALL INTERFERING PORTIONS OF ABANDONED UTILITY LINES WHICH ARE EXPOSED AS A RESULT OF CONSTRUCTION WILL BE REMOVED AND DISPOSED OF BY THE CONTRACTOR.

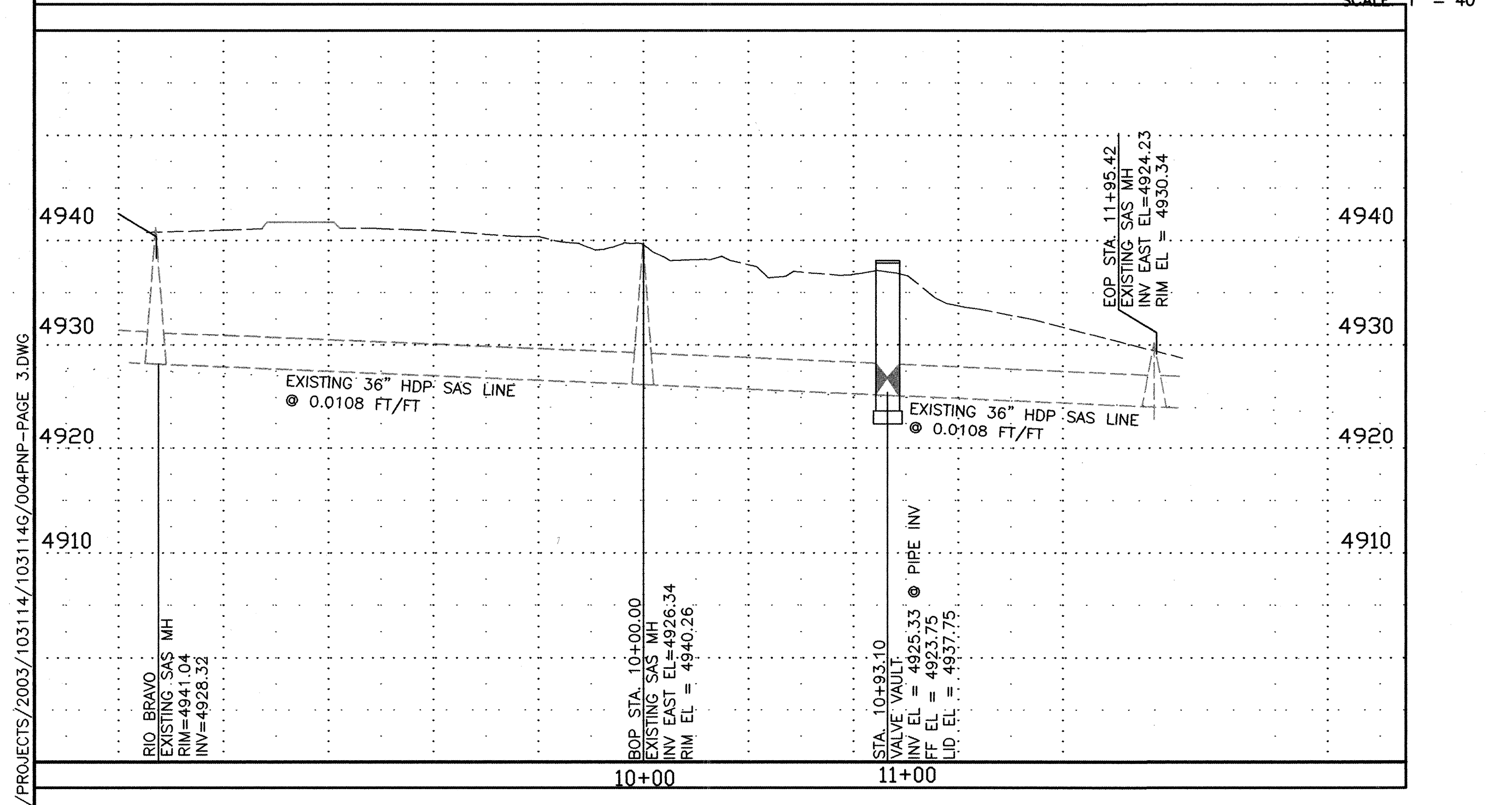
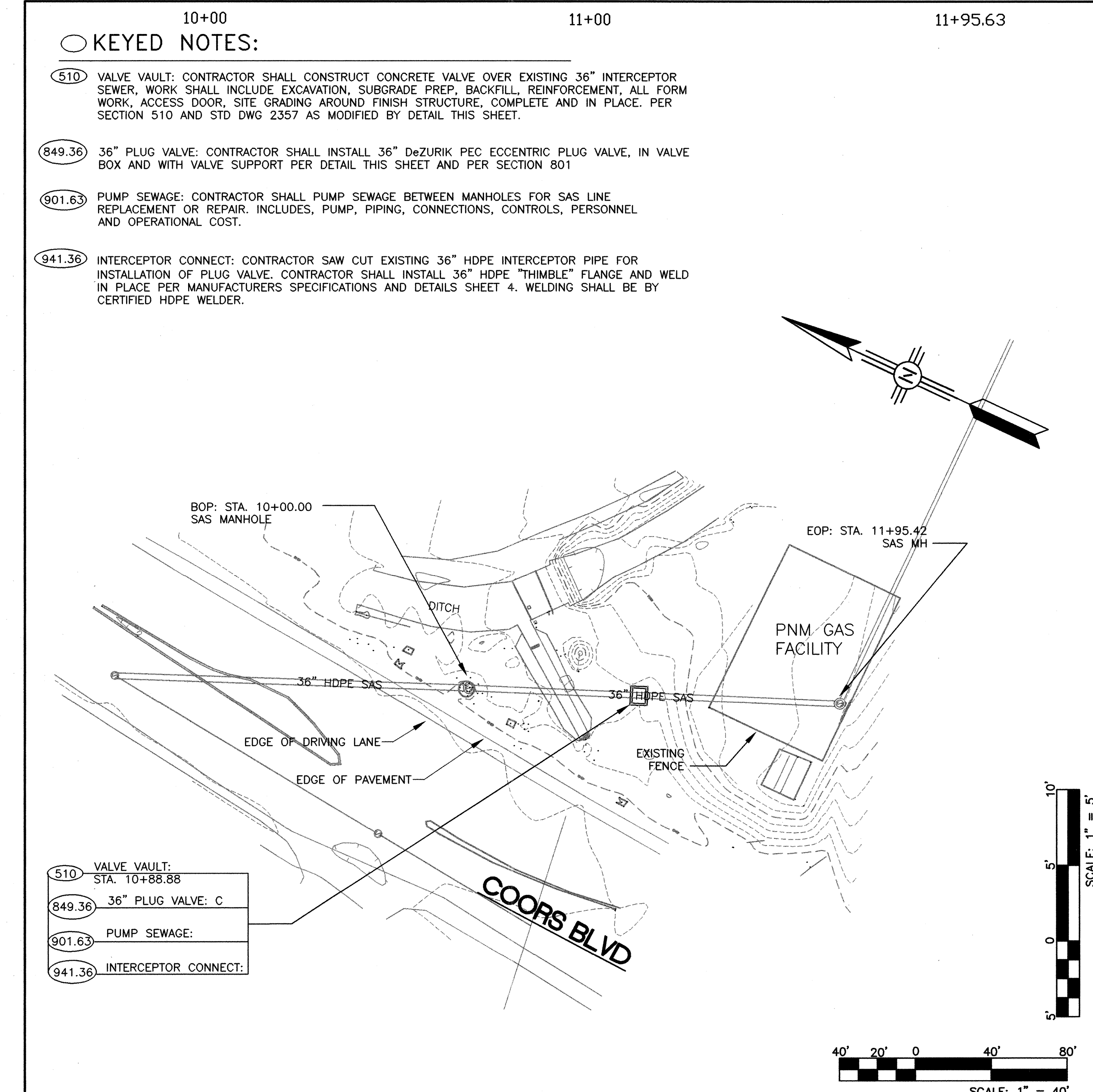
- 25 SHORING COSTS WILL BE CONSIDERED INCIDENTAL TO THE TRENCH AND BACKFILL COSTS.
- 26 THE CONTRACTOR WILL BE RESPONSIBLE FOR SECURING NPDES PERMITS REQUIRED BY APPLICABLE CITY, STATE, AND FEDERAL REGULATIONS.
- 27 THE TERM "REMOVE" USED IN THIS PLAN SET INCLUDES THE DISPOSAL OF SAID MATERIAL IN ACCORDANCE WITH CITY OF ALBUQUERQUE STANDARD SPECIFICATIONS, LATEST EDITION.
- 28 ALL CLASSES OF SEEDING SHALL BE DRY LAND MIX PLACED AT 1.5 LBS/1000 S.F. WITH FERTILIZER 21-12-12 PLACED AT 5 LBS/1000 S.F.
- 29 CONTRACTOR SHALL MAINTAIN A GRAFFITI-FREE SITE. CONTRACTOR SHALL PROMPTLY REMOVE ANY AND ALL GRAFFITI FROM EQUIPMENT, WHETHER PERMANENT OR TEMPORARY.
- 30 ALL EXCAVATION, TRENCHING AND SHORING ACTIVITIES MUST BE CARRIED OUT IN ACCORDANCE WITH OSHA 29 CFR 1926.650 SUBPART P.
- 31 DEWATERING SHALL BE BY POINT WELLS OUTSIDE THE TRENCH PRISM ONLY.
- 32 BEDDING, BACKFILL AND COMPACTION SHALL BE PER GEOTECH TRENCHING RECOMMENDATIONS.
- 33 ALL CONCRETE STRUCTURES THAT ARE CONSTRUCTED IN THE GROUND WATER SHALL BE COATED ON THE EXTERIOR PER SECTION 920.4.6.1.
- 34 ALL NEW CONCRETE STRUCTURES SHALL HAVE INTERIOR EPOXY COATING PER SECTION 920.4.6.2 AND SUPPLEMENTAL SECTION 940 PARTICULARLY SECTIONS 940.14.4.1 AND 940.14.5 UNLESS OTHERWISE DIRECTED BY C.O.A. PROJECT MANAGER.
35. THE LOCATIONS OF EXISTING UNDERGROUND UTILITIES SHOWN HEREIN ARE APPROXIMATE AND ARE PROVIDED AS A COURTESY ONLY. SAID UTILITIES ARE SHOWN PER RECORD DOCUMENTS AVAILBLE TO THE ENGINEER. UNLESS OTHERWISE NOTED, NO FIELD VERIFICATION HAS BEEN MADE. DURING CONSTRUCTION UNDERGROUND UTILITIES MAY BE ENCOUNTERED AS LOCATIONS OTHER THAN THOSE SHOWN HEREIN AND UTILITIES NOT IDENTIFIED BY THESE PLANS MAY ALSO BE ENCOUNTERED. THE CONTRACTOR SHALL IDENTIFY ALL UNDERGROUND UTILITIES IN THE FIELD PRIOR TO CONSTRUCTION PER SECTION 18. ANY COST AND/OR SCHEDULE ADJUSTMENTS REQUIRED BY ENCOUNTERING UTILITIES DURING CONSTRUCTION SHALL BE MADE PER SECTION 18.



CITY OF ALBUQUERQUE			
RIO BRAVO/COORS BLVD			
TITLE: SEWER PLUG VALVE AND VAULT GENERAL NOTES AND LEGEND			
Design Review Committee	City Engineer Approval		
Last Design Update			
No. / Day / Yr.			
No. / Day / Yr.			
No. / Day / Yr.			
No. / Day / Yr.			
No. / Day / Yr.			
City Project No.	Zone Map No.	Sheet	Of
7572.32	P-10-Z	2	4

RECORD DRAWINGS





GENERAL NOTES

- TYPICAL WALL REINFORCING SHALL BE #5 @ 12" O.C. EACH WAY, EACH FACE UNLESS SHOWN OTHERWISE ON THE SCHEDULE. PROVIDE BARS AS INDICATED ON THE SCHEDULE AND LAP 2' / #5 @ 12" FOR REMAINDER OF WALL HT. OR LENGTH.
- BASE SLAB REINFORCING SHALL BE #5 @ 12" EACH WAY, TOP AND BOTTOM OF SLAB.
- CONCRETE SHALL BE IN ACCORDANCE WITH STD SPEC SEC. 510 AND SEC. 101 FOR HYDRAULIC CONCRETE  $f'_c=4000$  psi @ 28 DAYS. ALL REINFORCING STEEL SHALL BE GRADE 60.

INTERIOR PLAN  
SCALE: 1" = 5'

SECTION A  
SCALE: 1" = 5'

SECTION B  
SCALE: 1" = 5'

VALVE SUPPORT  
SCALE: NTS

BOLT ANCHOR FOR LADDER SUPPORT  
SCALE: NTS

31 TURNS TO CLOSE VALVE

OPEN  
SCALE: 1" = 2'

RECORD DRAWINGS

ENGINEERS SEAL

SMITH ENGINEERING COMPANY  
A Full Service Engineering Company  
6000 Uptown Boulevard, N.E. Suite 500 Albuquerque, New Mexico 87110

CITY OF ALBUQUERQUE  
RIO BRAVO/COORS BLVD

TITLE: SEWER PLUG VALVE AND VAULT  
PLAN AND PROFILE AND DETAILS

Design Review Committee City Engineer Approval

City Project No. 7572.32 Zone Map No. P-10-Z Sheet 3 of 4

REVISIONS	
NO.	DATE

DESIGN	
DESIGNED BY	DATE
DRAWN BY	DATE
CHECKED BY	DATE
JAB	6/27/05
ADF	6/27/05
DAB	6/27/05

BENCH MARKS	
STATION NAME	MARK
MM45-7A	7A
BERNALILLO	
STATE	NM
COUNTY	
DATE	6/26/07
BY	TLC
DATE	6/26/07
SECTION	3
TOWNSHIP	9 NORTH
RANGE	2 EAST
PLANE COORDINATES	X=361,733.37, Y=1,468,847.40
GROUND TO GRID FACTOR	= .9996848
PROJECTION	= T.M.
SPIRIT LEVEL ELEVATION (SLD 1929)	= 4953.519 FT. 2ND ORDER
ZONE	CENTRAL
THE STATION IS LOCATED	4.8 MILES SW OF DOWNTOWN ABO. ON INTERSECT OF COORS RD. S AND BLAKE RD.
STATION MARK IS	"ACS45-7A, 1976" BRASS CAP.

SURVEY INFORMATION	
FIELD NOTES	
NO.	
BY	
DATE	9/01/05
SMITH ENG. CO.	505-884-0700
LOREN RISENHOOVER	P.S.

AS BUILT INFORMATION	
CONTRACTOR	TLC
WORK	
DATE	6/26/07
BY	TLC
DATE	6/26/07
SECTION	3
TOWNSHIP	9 NORTH
RANGE	2 EAST
PLANE COORDINATES	X=361,733.37, Y=1,468,847.40
GROUND TO GRID FACTOR	= .9996848
PROJECTION	= T.M.
SPIRIT LEVEL ELEVATION (SLD 1929)	= 4953.519 FT. 2ND ORDER
ZONE	CENTRAL
THE STATION IS LOCATED	4.8 MILES SW OF DOWNTOWN ABO. ON INTERSECT OF COORS RD. S AND BLAKE RD.
STATION MARK IS	"ACS45-7A, 1976" BRASS CAP.



