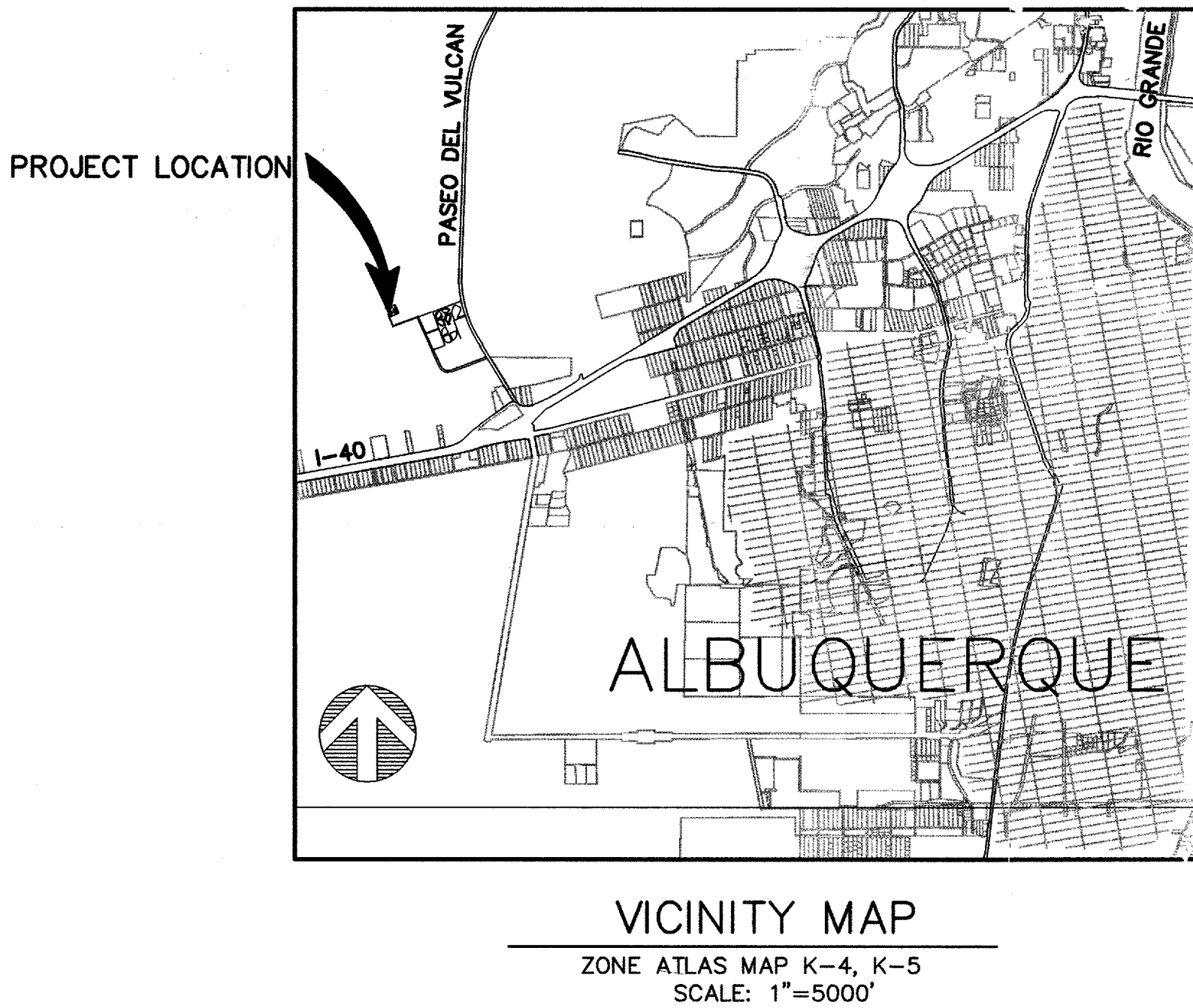


BERNALILLO COUNTY, NEW MEXICO  
PUBLIC WORKS DEPARTMENT  
CONSTRUCTION PLANS  
FOR  
INDUSTRIAL PARK WATER SYSTEM  
1.25 MG RESERVOIR  
BID PACKAGE B  
BC PROJECT NO. TS 04-07-B



DRAWING INDEX

SHEET NO.	DESCRIPTION
1	COVER SHEET
2	GENERAL NOTES
3	TANK LOCATION MAP
4	1.25 MG TANK PLAN, ELEVATION & DETAILS
5	1.25 MG TANK INTERIOR PLAN, SECTIONS & DETAILS
6	ALTERNATE-1.0 MG TANK PLANS, ELEVATION & SECTION (THIS SHEET NOT USED)
7	PLATFORM & MISCELLANEOUS DETAILS
8	MISCELLANEOUS TANK DETAILS
9	MISCELLANEOUS DETAILS

CERTIFICATE OF SUBSTANTIAL COMPLIANCE OF PLANS

I, Dennis D. Brand, of the firm Wilson & Company, Inc., a Registered Professional Engineer in the State of New Mexico, NMPE number 8374, do hereby certify, to the best of my knowledge and belief, that the infrastructure installed as part of this project has been inspected by me or by a qualified person under my direct supervision and has been constructed in accordance with the plans and specifications approved by the City Engineer/Water Utility Authority Engineer and that the original design intent of the approved plans has been met, except as noted by me on the as-built construction drawings. This Certification is based on site inspections by me or personnel under my direction and survey and as-built drawing information provided by The Contractor, Bradbury-Stamm, Inc.

APR 21 2006

NOTE:  
STREETS ARE BEING BUILT TO BERNALILLO COUNTY  
PRIVATE ROADWAY STANDARDS. ACCEPTANCE OF  
STREETS BY CITY OF ALBUQUERQUE WILL NOT  
OCCUR UNTIL STREETS ARE RECONSTRUCTED  
TO CITY STANDARDS PER THE DPM.

WCEA FILE NO. X4210019  
BID PKG. B - MARCH 2005

APPROVED FOR CONSTRUCTION  
4/13/05  
BERNALILLO COUNTY PUBLIC WORKS

APPROVED FOR CONSTRUCTION  
4-15-05  
ALBUQUERQUE BERNALILLO COUNTY  
WATER UTILITY AUTHORITY

REV	SHEETS	CITY ENGINEER	DATE	USER DEPARTMENT	DATE	USER DEPARTMENT	DATE
ENGINEERS STAMP & SIGNATURE		APPROVALS		ENGINEER	DATE	*****	
		DRC Chairman		<i>[Signature]</i>	4-27-05	APPROVED FOR CONSTRUCTION	
		Water/Wastewater		N/A			
		Hydrology		<i>[Signature]</i>	4/27/05		
		Water Sys. Division		<i>[Signature]</i>	4/15/05		
						City Engineer Date	
				PROJECT NO. TS 04-07-B		SHEET NO. 1 OF 9	

CPN 760682









X:\Public\PROJECTS\X4210019\Plan Drawings-BC IP Water\1.25MG TANK\Tank location map.dwg 4/15/2005 2:24:52 PM MDT  
SCANNED BY  
MESA REPRO



NOT CONSTRUCTED

1. BASE BID IS FOR THE CONSTRUCTION OF A 1.25 MG (95' DIA.) STORAGE RESERVOIR AND ITS APPURTENANCES.
2. ~~ALTERNATE BID A IS FOR THE CONSTRUCTION OF A 1.00 MG (85'DIA.) STORAGE RESERVOIR AND ITS APPURTENANCES. SEE SHEET 6 OF 9.~~
3. TANK FLOOR ELEVATION AT RINGWALL EQUALS 5806.00

- ① INSTALL ONE (1) 24-INCH, 1/4-TURN CLOSURE BUTTERFLY VALVE (TANK INLET PIPE)
- ② INSTALL ONE (1) 24-INCH, 1/4-TURN CLOSURE BUTTERFLY VALVE WITH ABOVE GROUND POST INDICATOR ASSEMBLY (TANK OUTLET PIPE)
- ③ INSTALL ONE (1) 12-INCH RESILIENT SEAT GATE VALVE (TANK DRAIN PIPE)

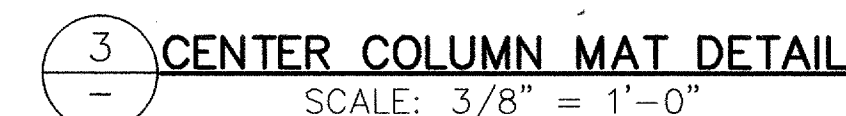
1.25 MG RESERVOIR INDUSTRIAL PARK WATER SYSTEM TANK LOCATION MAP BERNALILLO COUNTY		
		
ENGINEERING DIVISION		
PROJECT NO. WCEA X4-210-019	SHEET	3 of 9

CPN 76 0682




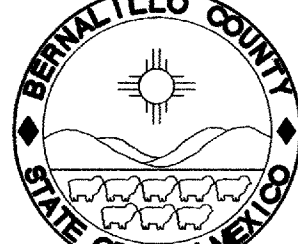
## 4 of 9





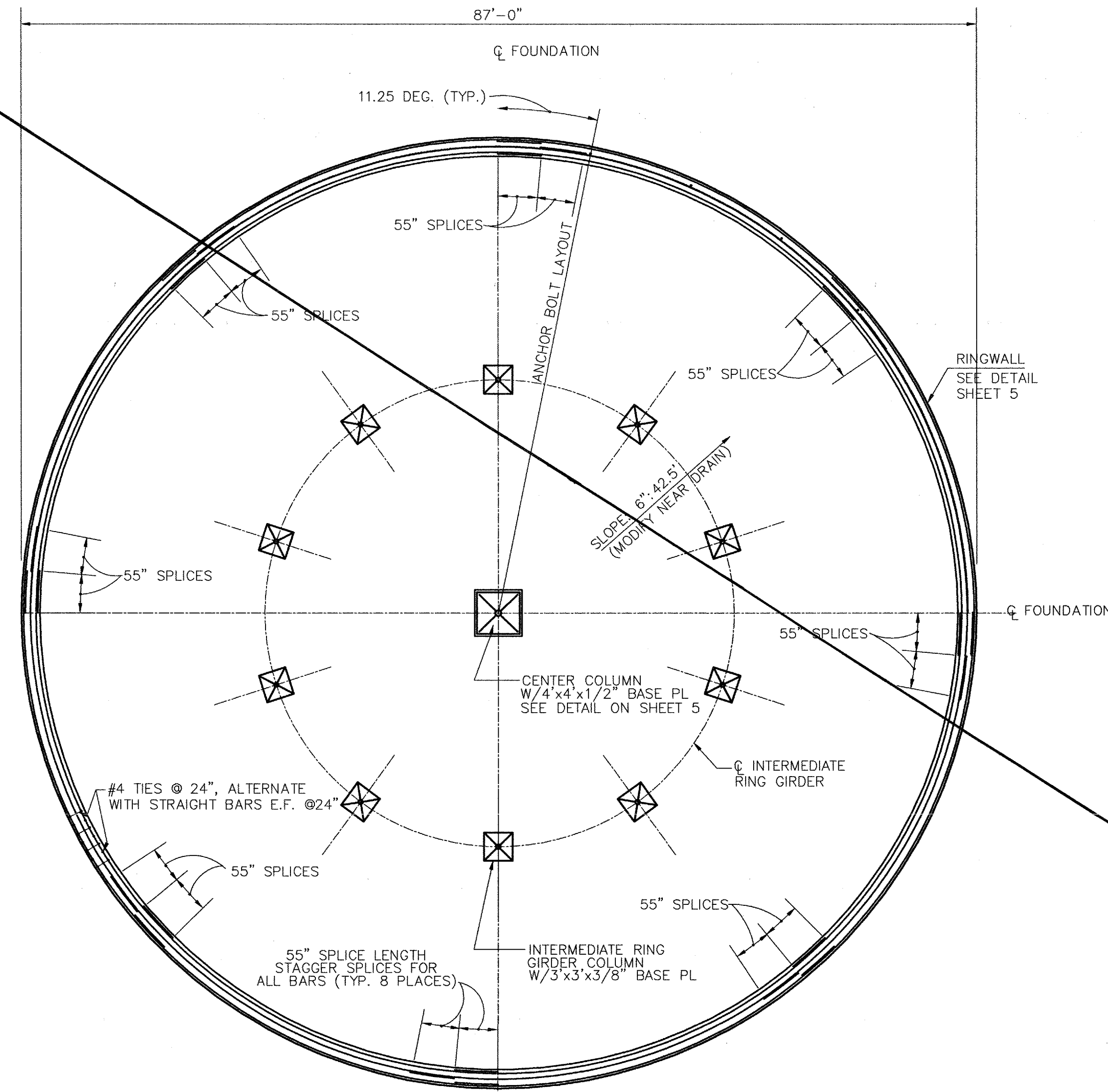
NOTE:  
ALL HOOP TENSION STEEL SPLICES IN RINGWALL SHALL BE STAGGERED TO AVOID SPLICING MORE THAN 3 BARS IN ANY VERTICAL PLANE. SPLICED BARS MAY BE ON OPPOSITE SIDES BUT SHALL NOT BE ADJACENT TO EACH-OTHER IN THE VERTICAL PLANE.

WCEA FILE NO. X4210019  
BID PKG. B - APRIL 2005

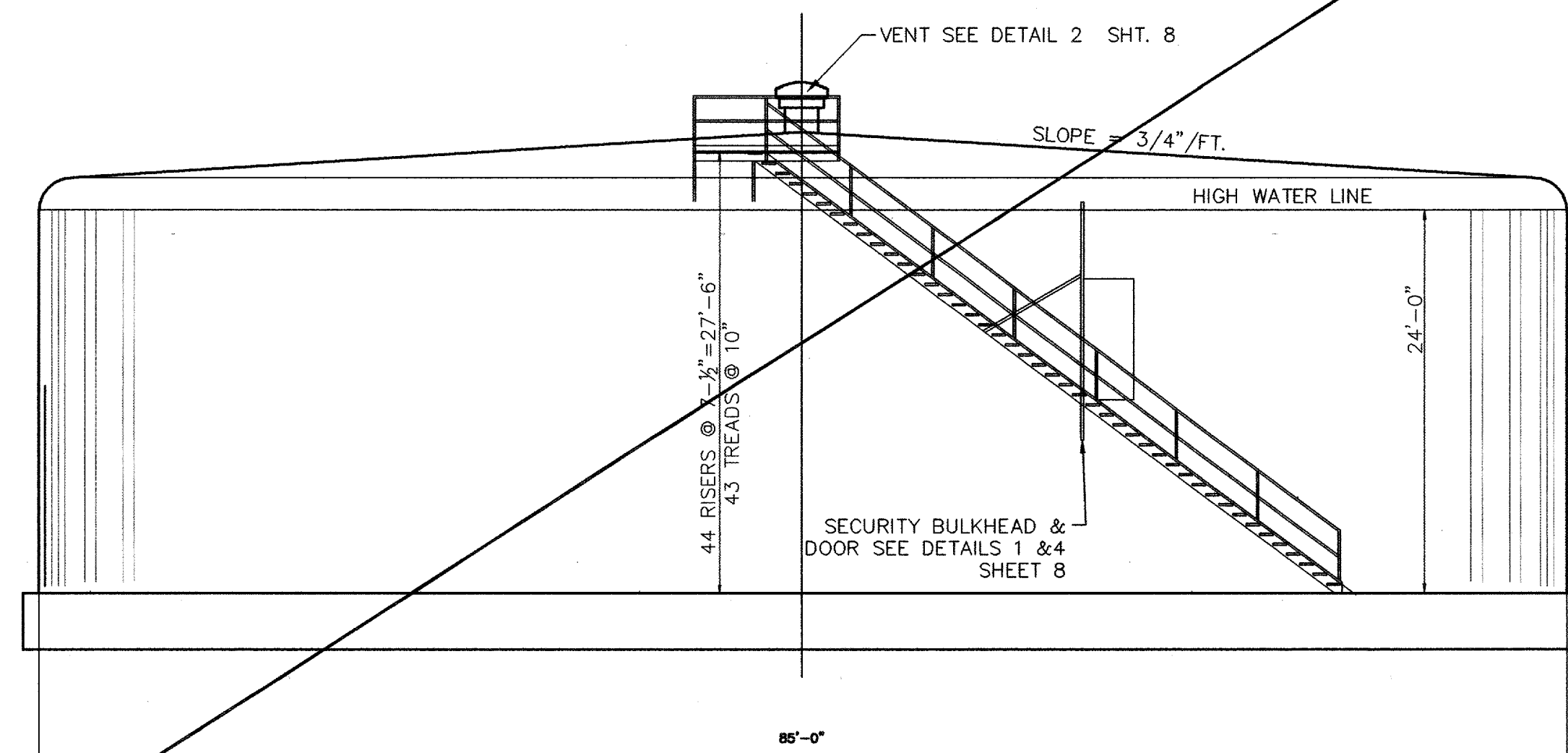
1.25 MG RESERVOIR INDUSTRIAL PARK WATER SYSTEM TANK INTERIOR PLAN AND SECTION BERNALILLO COUNTY		
		
ENGINEERING DIVISION		
PROJECT NO.	TS 04-07-B	SHEET 5 of 9

**WILSON  
& COMPANY**

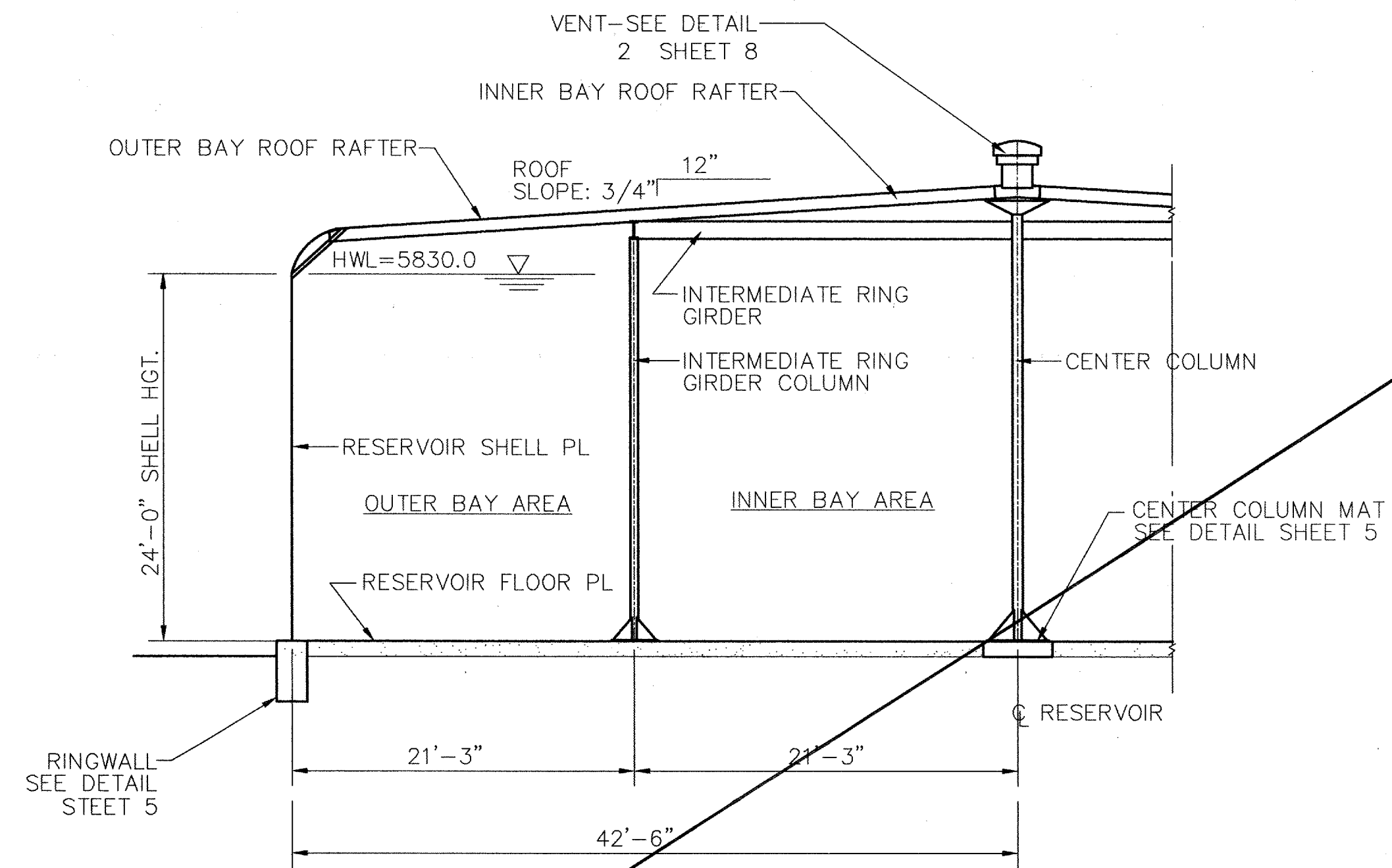
CPN 760682



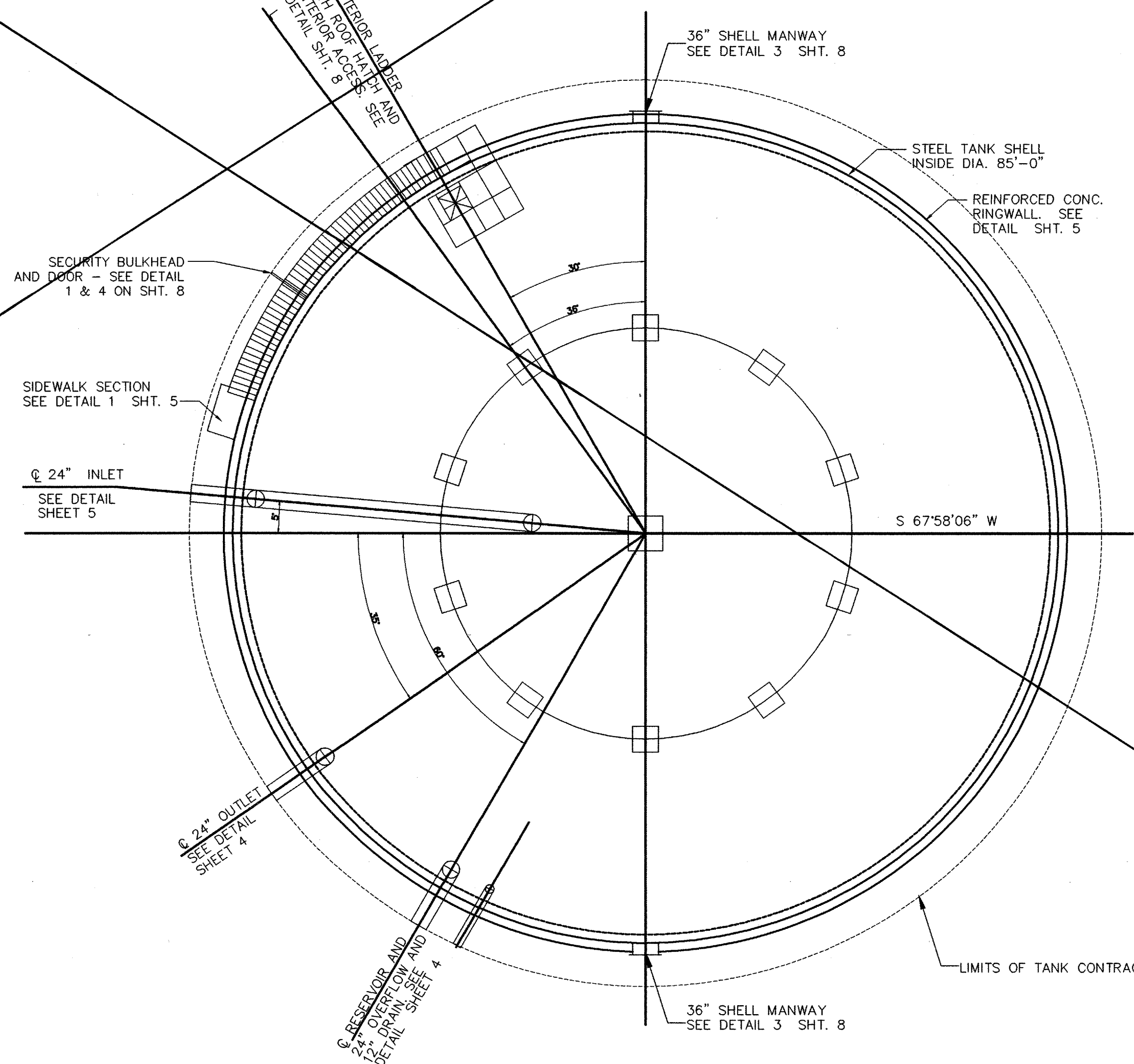
ALTERNATE-1.00 MG WATER STORAGE TANK INTERIOR PLAN  
N.T.S.



ALTERNATE-1.00 MG STORAGE RESERVOIR  
1 ELEVATION  
N.T.S.



ALTERNATE-1.00 MG WATER STORAGE TANK INTERIOR SECTION  
N.T.S.



ALTERNATE-1.00 MG STORAGE RESERVOIR PLAN  
N.T.S.

THIS SHEET NOT USED

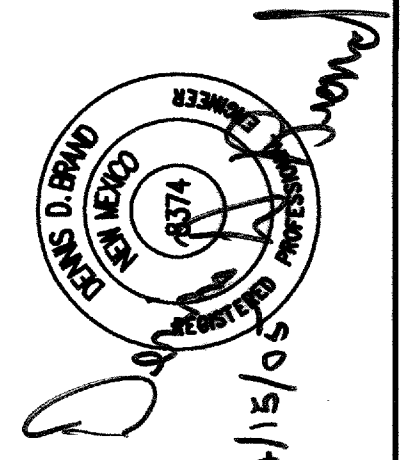
RECORD DRAWING  
DATE 4/21/06  
BY [Signature]

1.25 MG RESERVOIR INDUSTRIAL PARK WATER SYSTEM ALTERNATE-1.0 MG TANK PLANS, ELEVATION & SECTION BERNALILLO COUNTY	
APPROVE APR 27 2005 DESIGN REVIEW COMMITTEE	
ENGINEERING DIVISION	
PROJECT NO. TS 04-07-B	SHEET 6 of 9

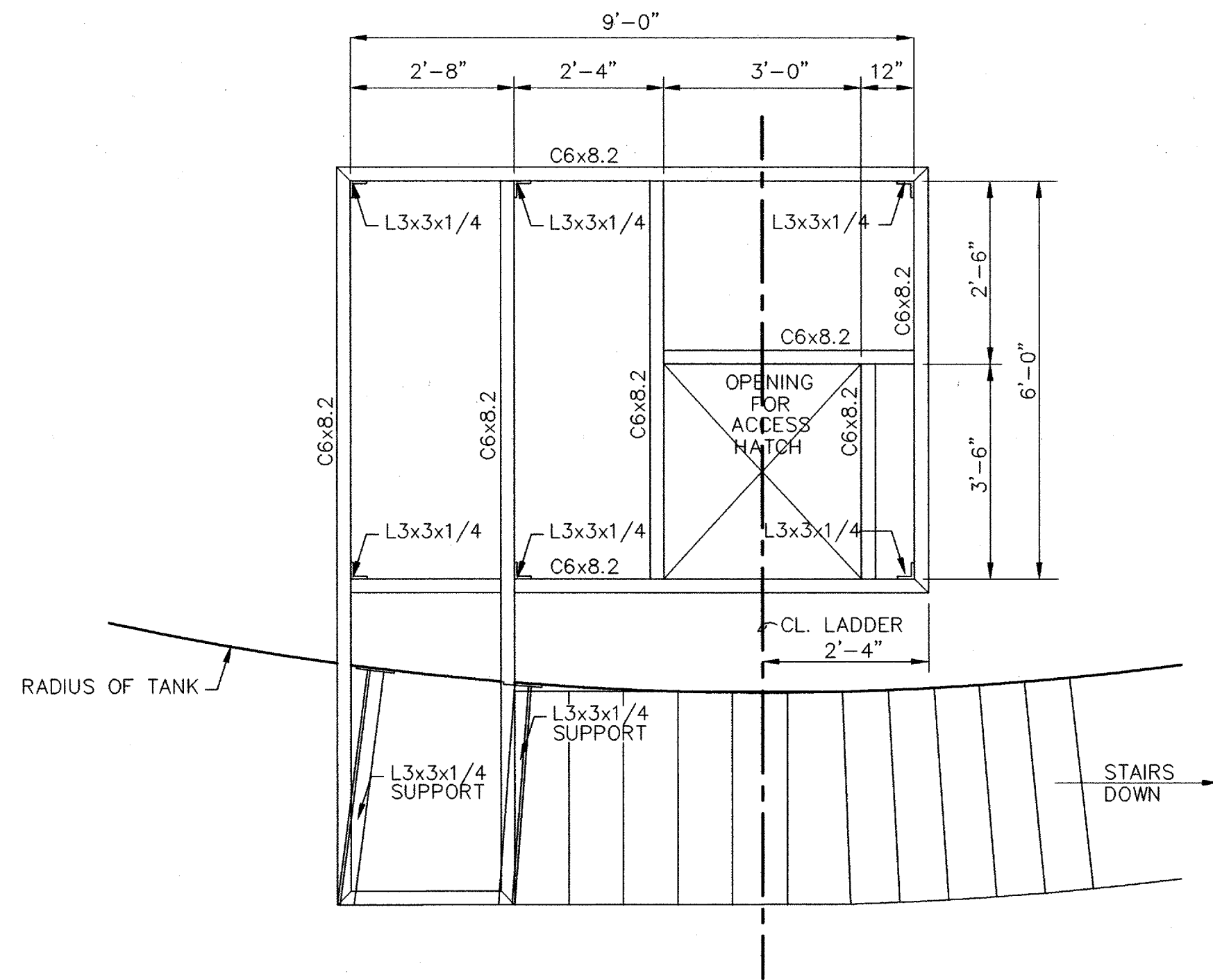
WILSON  
& COMPANY

CPN 760682

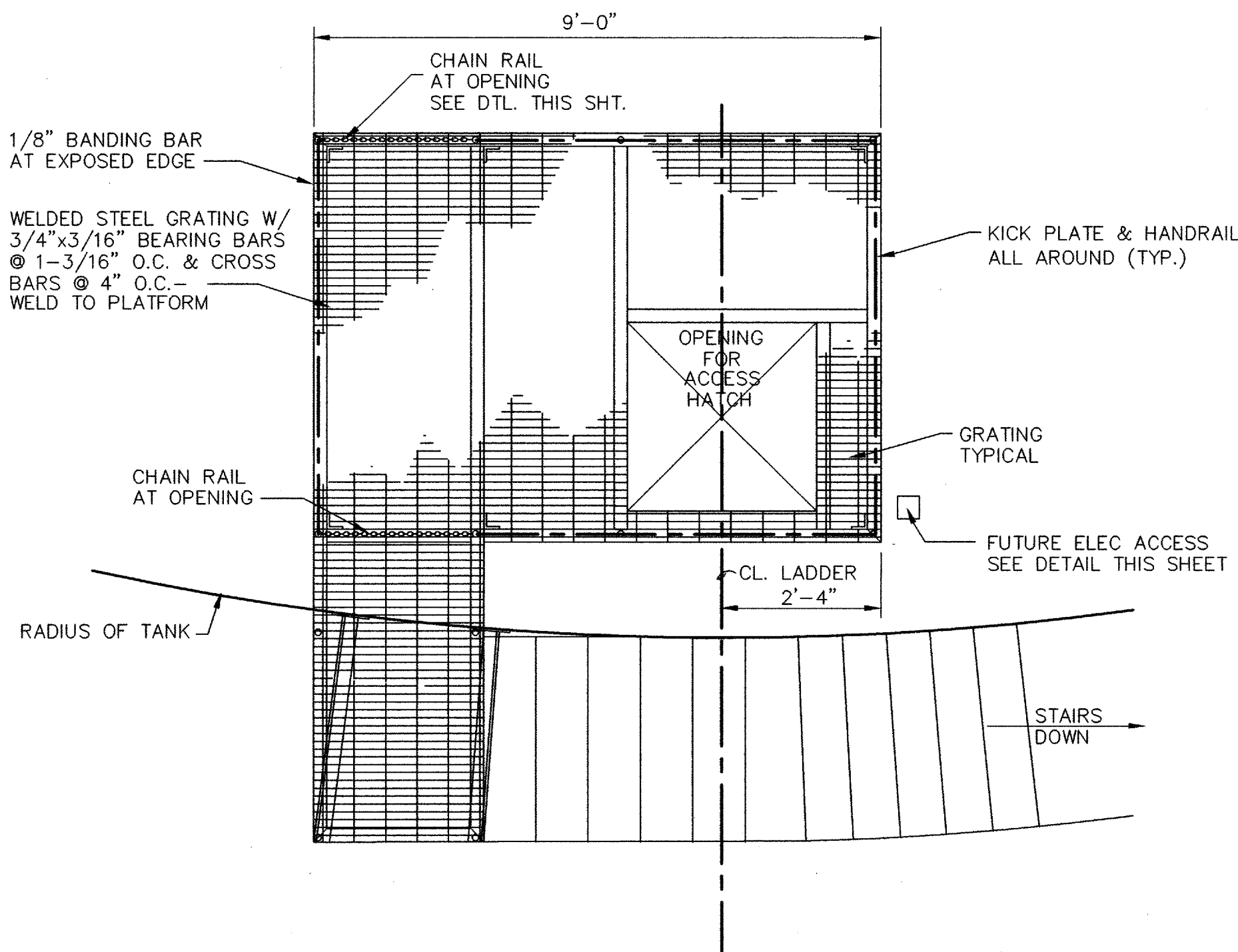
SURVEY INFORMATION		BENCH MARKS		AS-BUILT INFORMATION	
NO.	DATE	ACS 1-KS	(NO PUBLISHED DESCRIPTION AVAILABLE)	CONTRACTOR	NO.
BY		COORDS.	1483795.076, 333607.752 (NAD 1927)	WORK BY	DATE
		CGG	= 0.099996544427	INSPECTOR'S	DATE
		ELEVATION	= 5794.218 FT.	ACCEPTANCE BY	DATE
				VERIFICATION BY	DATE
				DRAWINGS	DATE
				MICRO-FILM	DATE
				RECORDED BY	DATE



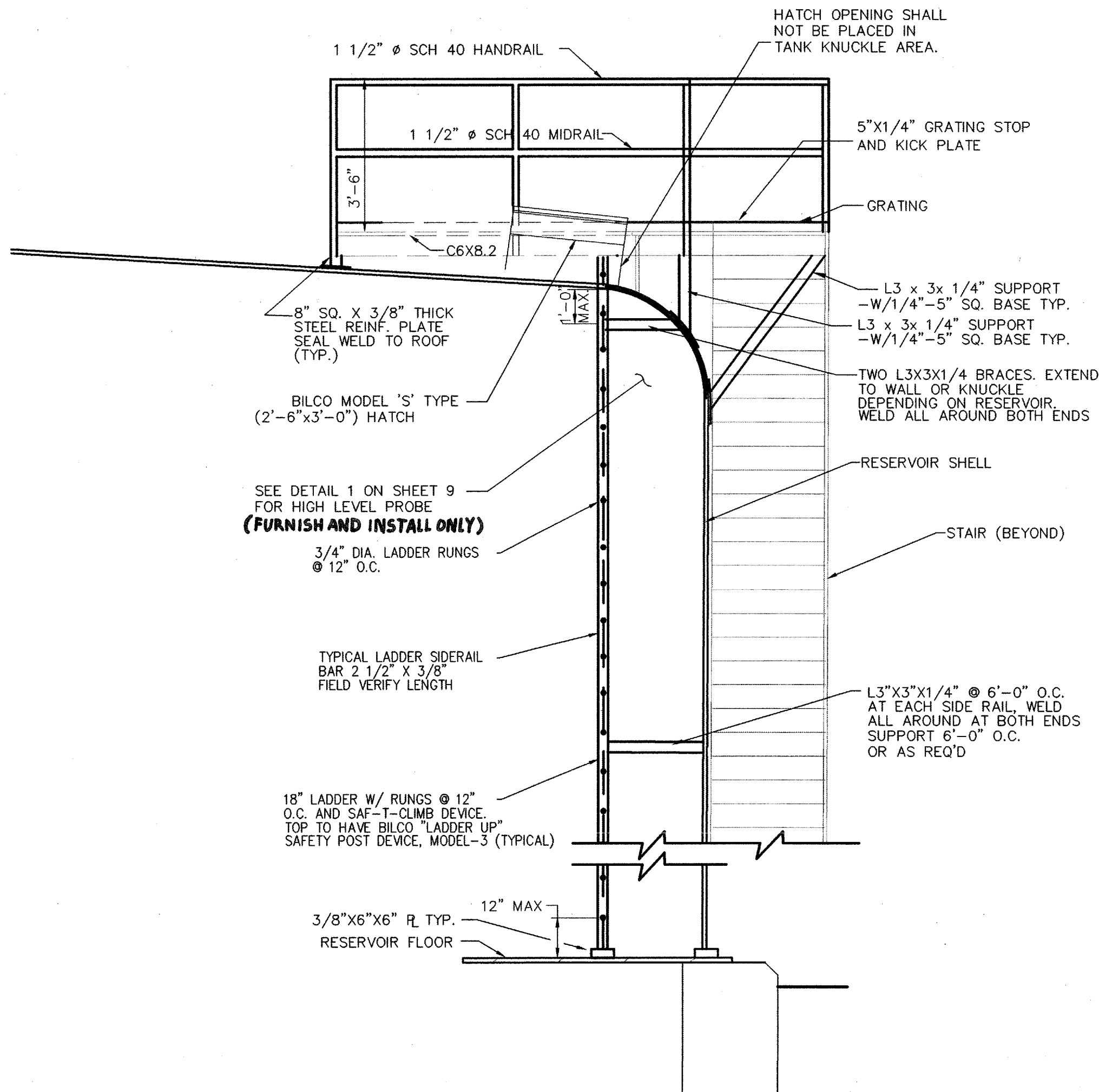




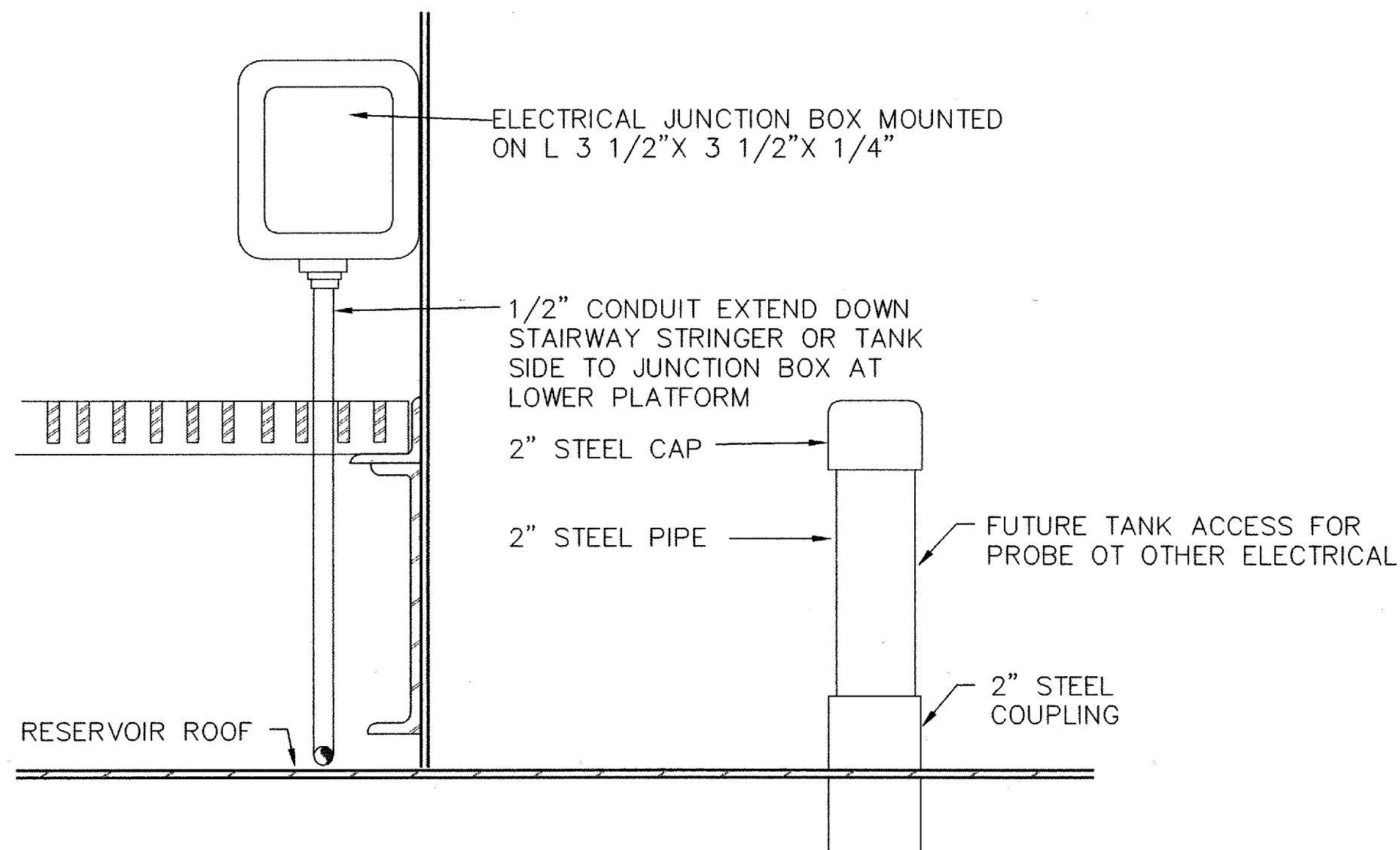
1 PLATFORM FRAMING PLAN  
N.T.S.



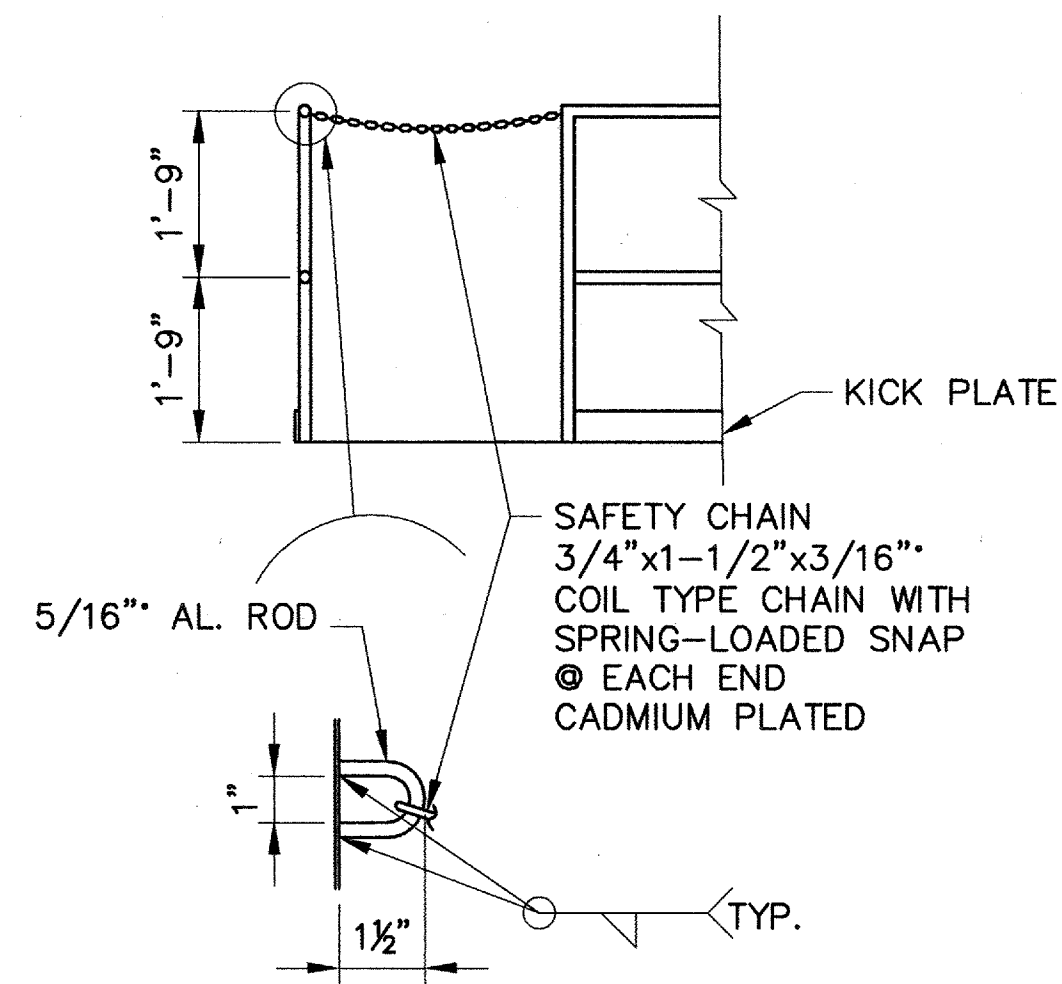
4 PLATFORM GRATING PLAN  
N.T.S.



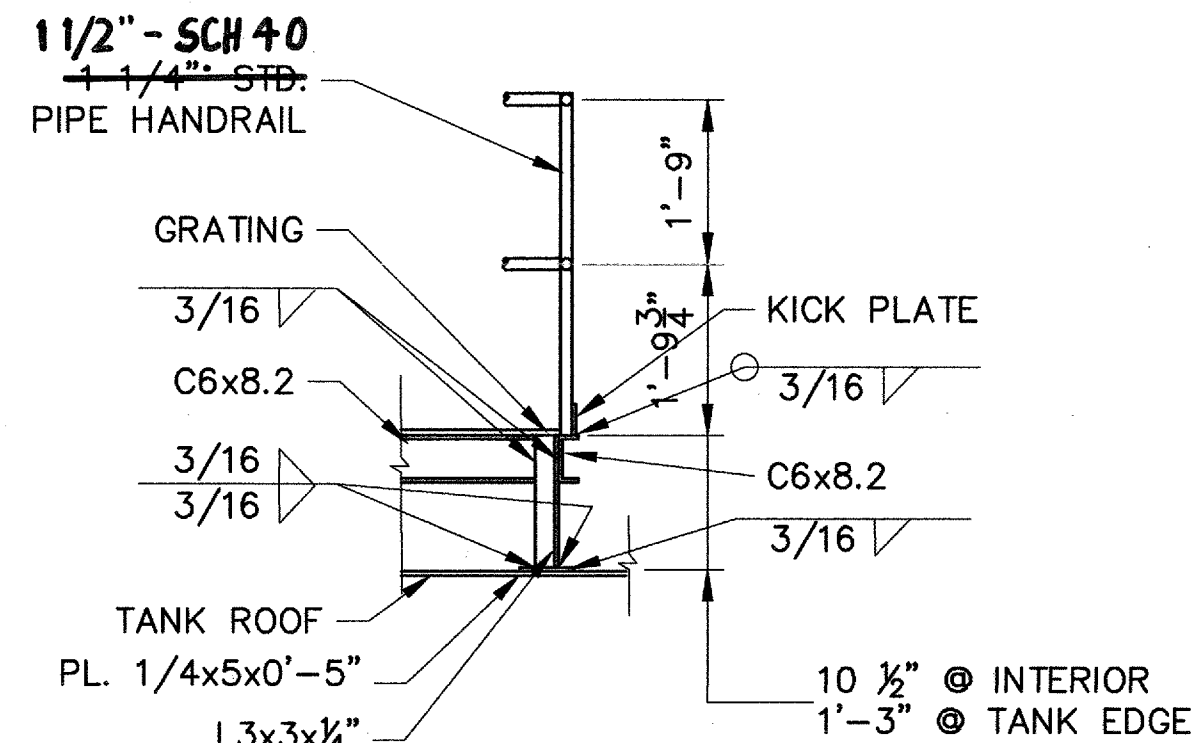
2 SECTION A-A  
N.T.S.



5 SECTION B-B  
N.T.S.



3 CHAIN RAIL DETAIL  
N.T.S.



6 SUPPORT SECTION  
N.T.S.

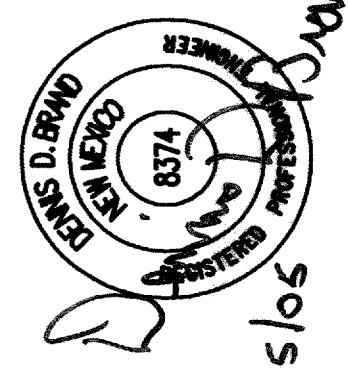
RECORD DRAWING  
DATE 4/21/06  
BY [Signature]

1.25 MG RESERVOIR  
INDUSTRIAL PARK WATER SYSTEM  
PLATFORM AND MISCELLANEOUS DETAILS  
BERNALILLO COUNTY

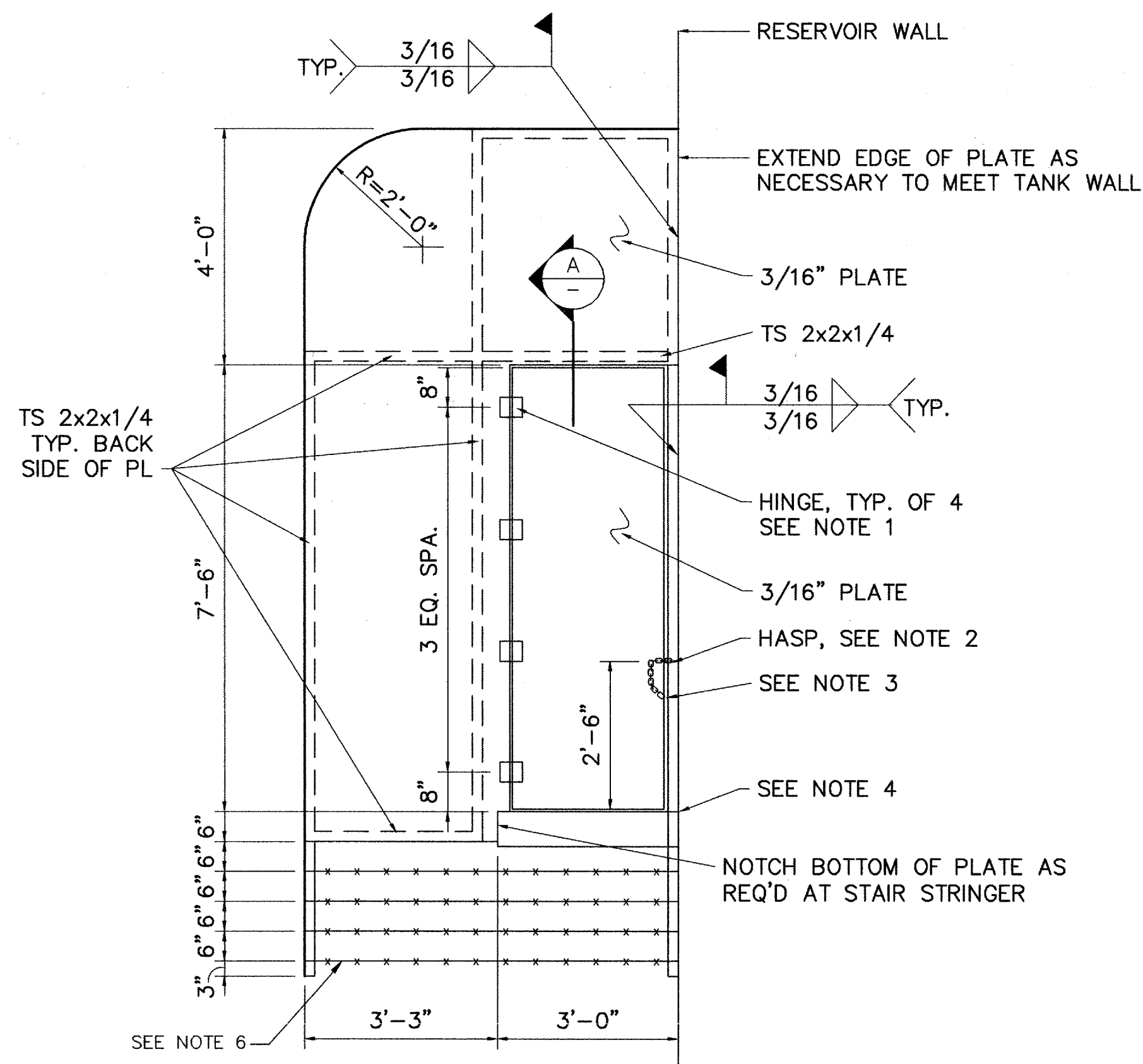
APPROVED  
APR 27 2005  
DESIGN REVIEW COMMITTEE

ENGINEERING DIVISION  
PROJECT NO. TS 04-07-B  
SHEET 7 of 9

WILSON & COMPANY  
CPN 760682

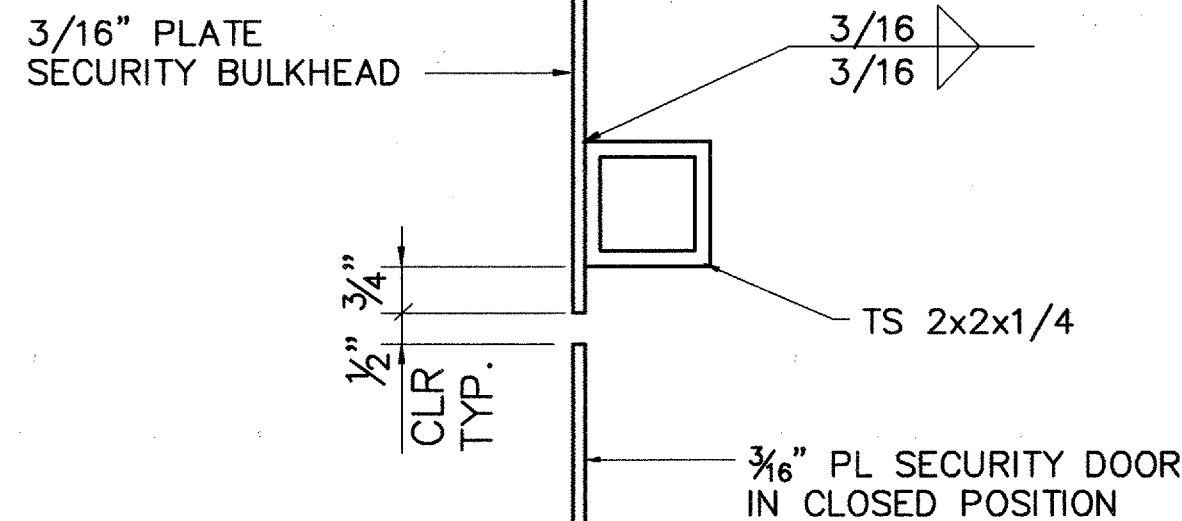
AS-BUILT INFORMATION		BENCH MARKS		SURVEY INFORMATION		ENGINEER'S SEAL	
CONTRACTOR	DATE	ACS 1-K5	NO PUBLISHED DESCRIPTION AVAILABLE (NO PUBLISHED DESCRIPTION AVAILABLE)	FIELD NOTES	DATE		4/15/06
INSPECTOR'S	DATE	COORDS.	COORDS. 1483795.076, 333607.752 (NAD 1927)	BY	DATE		
FIELD VERIFICATION BY	DATE	CCGF	CCGF = 0.00996544427	NO.	DATE	REMARKS	BY
DATE	DATE	ELEVATION	ELEVATION = 5794.218 FT. (NAVD 29)		DATE	WILSON & COMPANY, ENGINEERS & ARCHITECTS	DATE APRIL 05
DATE	DATE				DATE	DESIGNED BY	DATE APRIL 05
DATE	DATE				DATE	DRAWN BY	DATE APRIL 05
DATE	DATE				DATE	CHECKED BY	DATE APRIL 05

x:\Public\PROJECTS\X4210019\Plan Drawings-BC IP Water\1.25MG TANK\tank\_misc\_dtl3.dwg 4/15/2005 2:27:26 PM MDT  
SCANNED BY  
MESA REPRO



ELEVATION

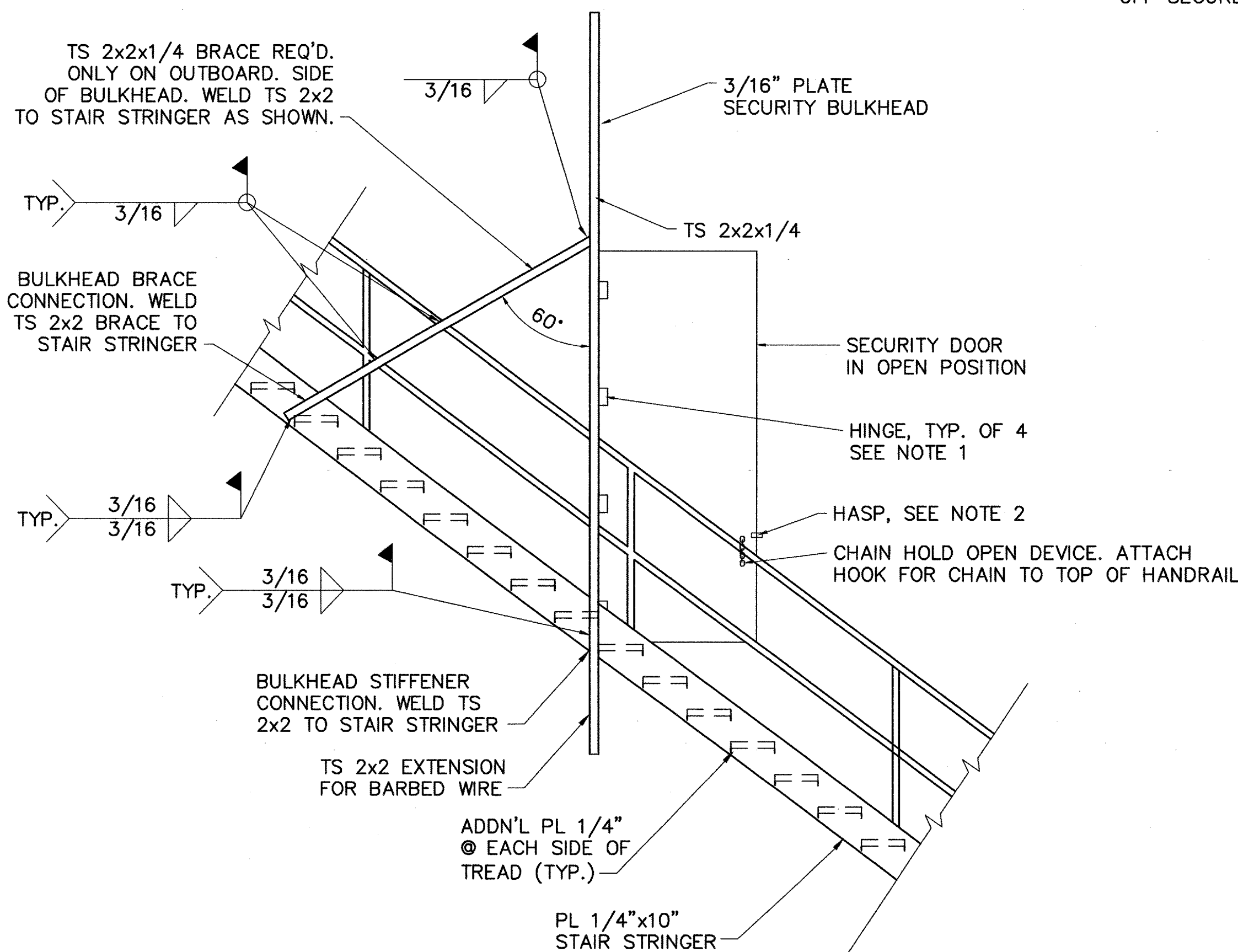
1 SECURITY BULKHEAD DETAIL  
SCALE: 1/2" = 1'-0"



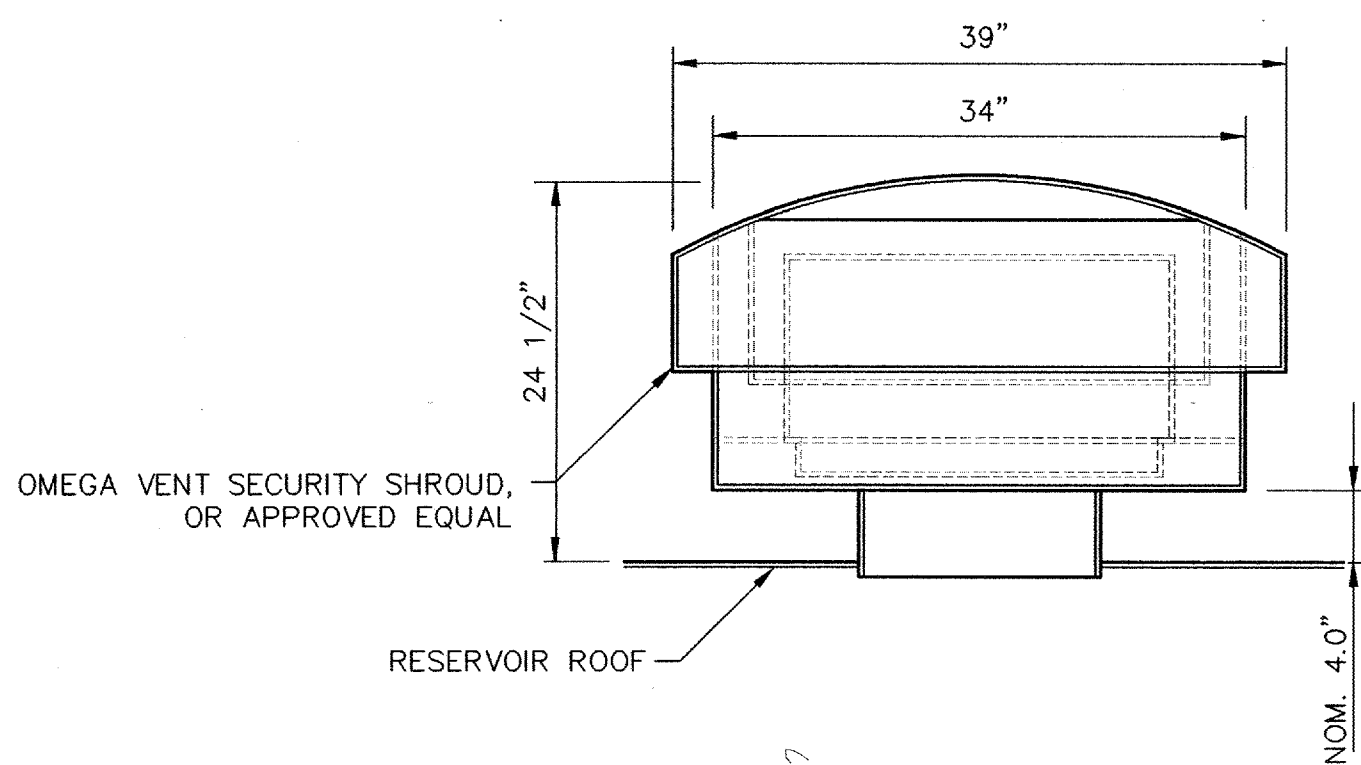
SECTION A-SECURITY BULKHEAD

SECURITY BULKHEAD NOTES:

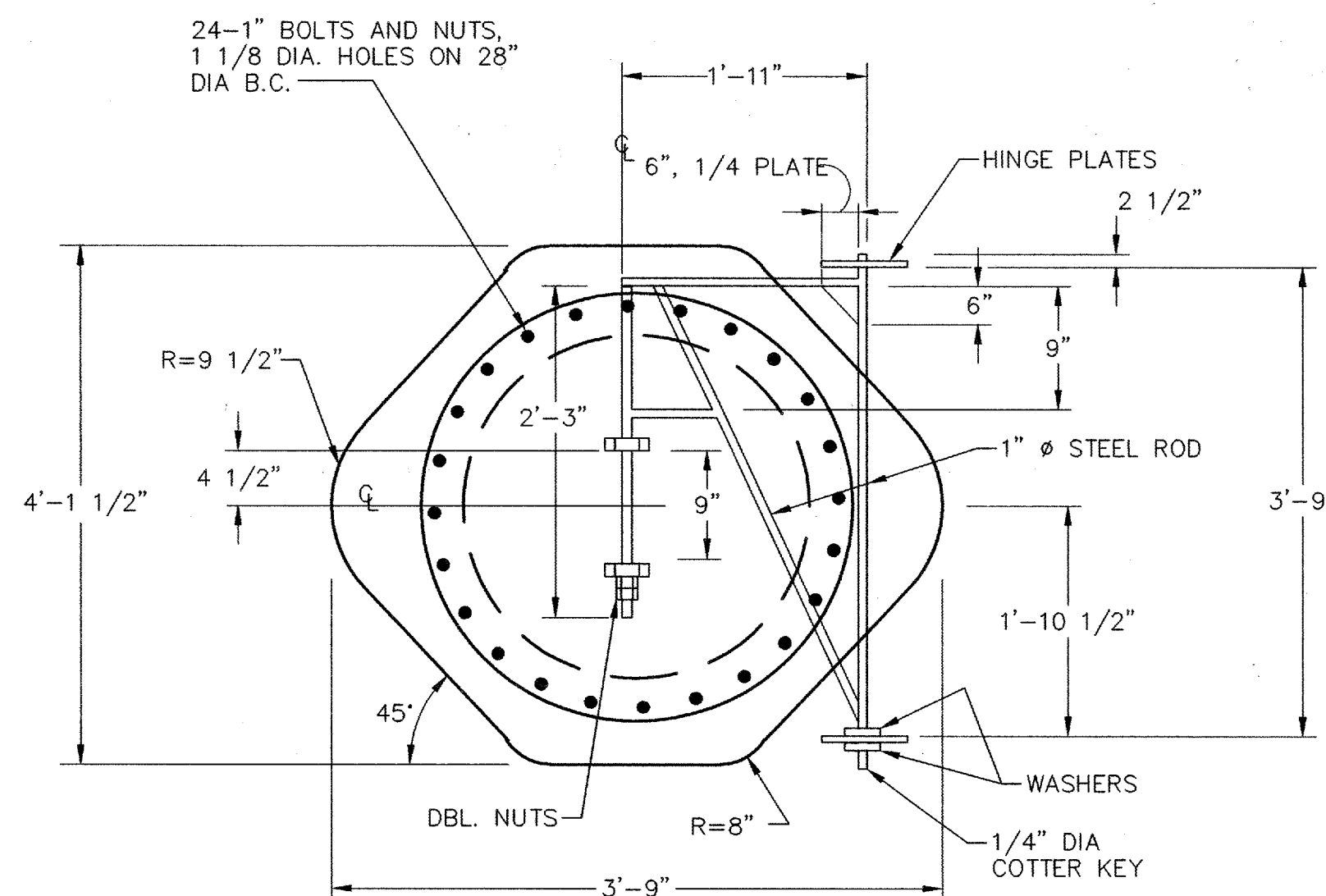
1. PROVIDE 4-4" STEEL SURFACE HINGES SHOP WELDED TO DOOR. HINGES SHALL BE MODEL NO. 1607A11 BY McMASTER CARR OR EQUAL.
2. PROVIDE HEAVY DUTY SAFETY HASP MODEL NO. 1848A41 BY McMASTER CARR OR EQUAL.
3. PROVIDE CHAIN WELDED TO DOOR AND HOOK WELDED TO HANDRAIL SO DOOR CAN BE HELD OPEN.
4. CUT HOLE IN TREAD FOR TUBE. INSTALL TUBE THROUGH TREAD AND WELD TREAD TO TUBE.
5. LOCATE BULKHEAD AT CENTER OF 20TH RISER ON OUTSIDE STAIRS.
6. BARBED WIRE SHALL BE FOUR-POINT PATTERN WITH TWO STRANDS OF NO. 12 1/2 GAUGE WIRE WITH 1" BARBS 5" APART ZINC COATED. THREAD WIRE THROUGH HOLE DRILLED IN TUBE AND TIE OFF SECURELY.



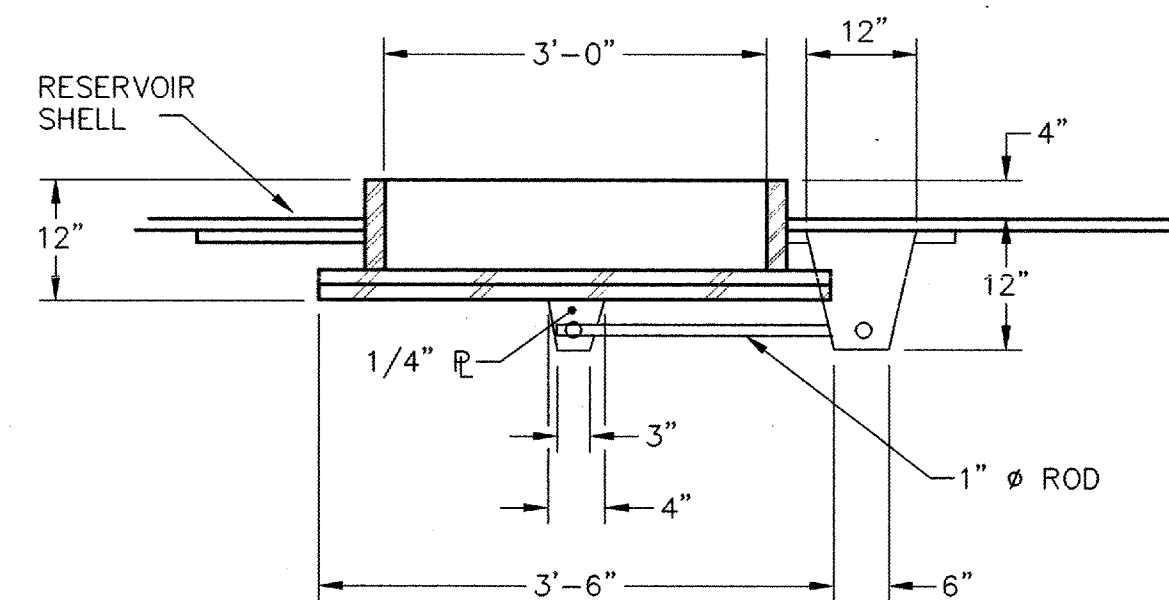
4 STAIR ELEVATION  
N.T.S.



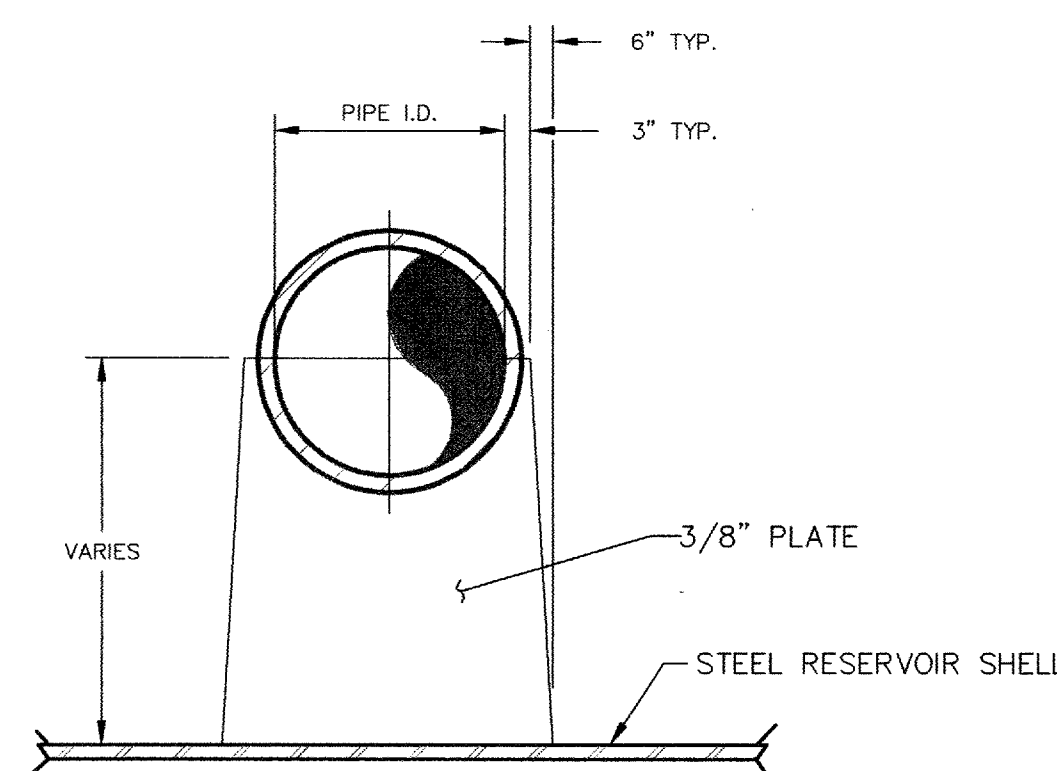
2 VENT SECURITY SHROUD  
N.T.S.  
VENT SIZE AND OPENING SHALL BE REQUIRED UNDER AWWA D-100 FOR SAFE OPERATION OF TANK



PLAN



3 36" SHELL MANHOLE (TYP. OF 2)  
N.T.S.



5 PIPE BRACKET DETAIL  
N.T.S.

RECORD DRAWING  
DATE 4/21/06  
by [signature]

1.25 MG RESERVOIR  
INDUSTRIAL PARK WATER SYSTEM  
MISCELLANEOUS TANK DETAILS  
BERNALILLO COUNTY

APPROVED  
APR 27 2005  
DESIGN REVIEW COMMITTEE

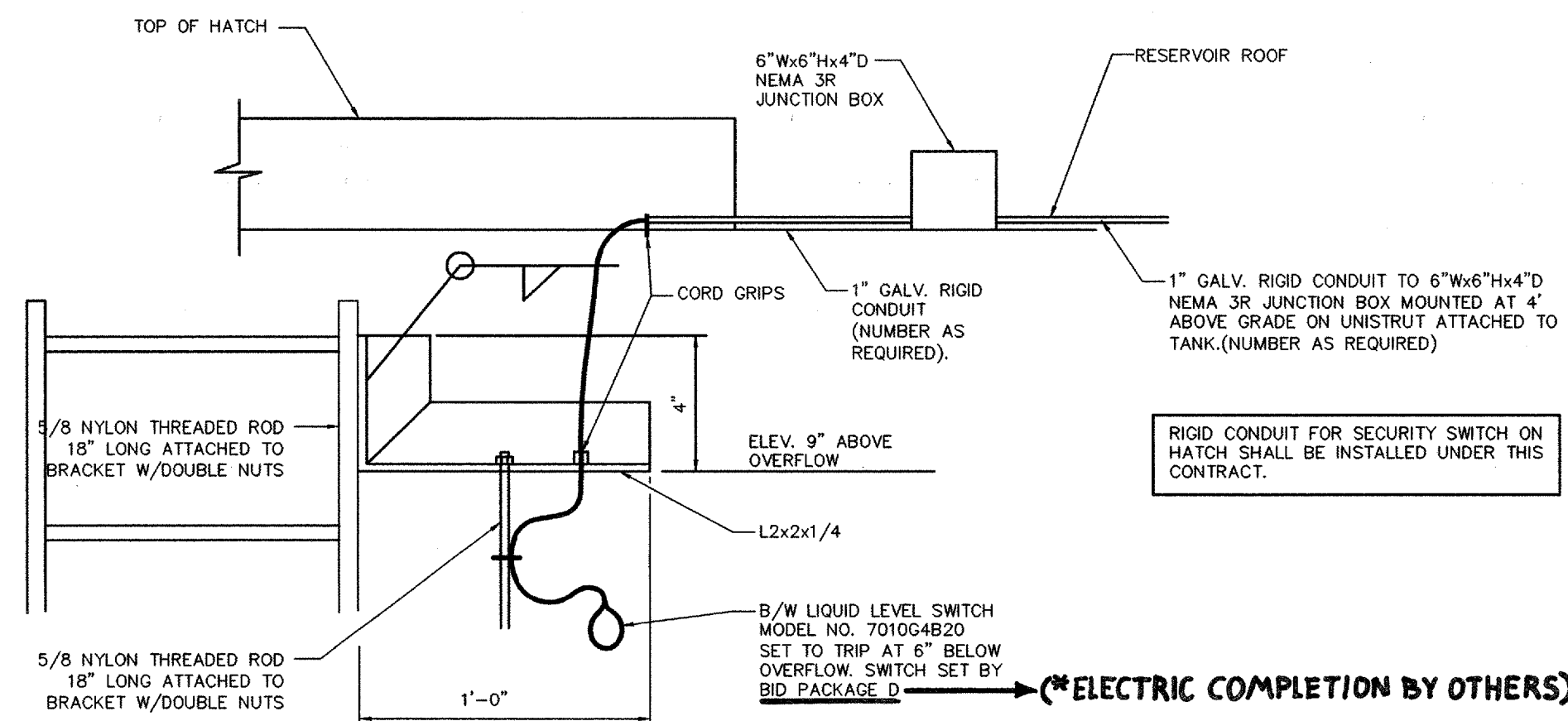
ENGINEERING DIVISION

PROJECT NO. TS 04-07-B SHEET 8 of 9

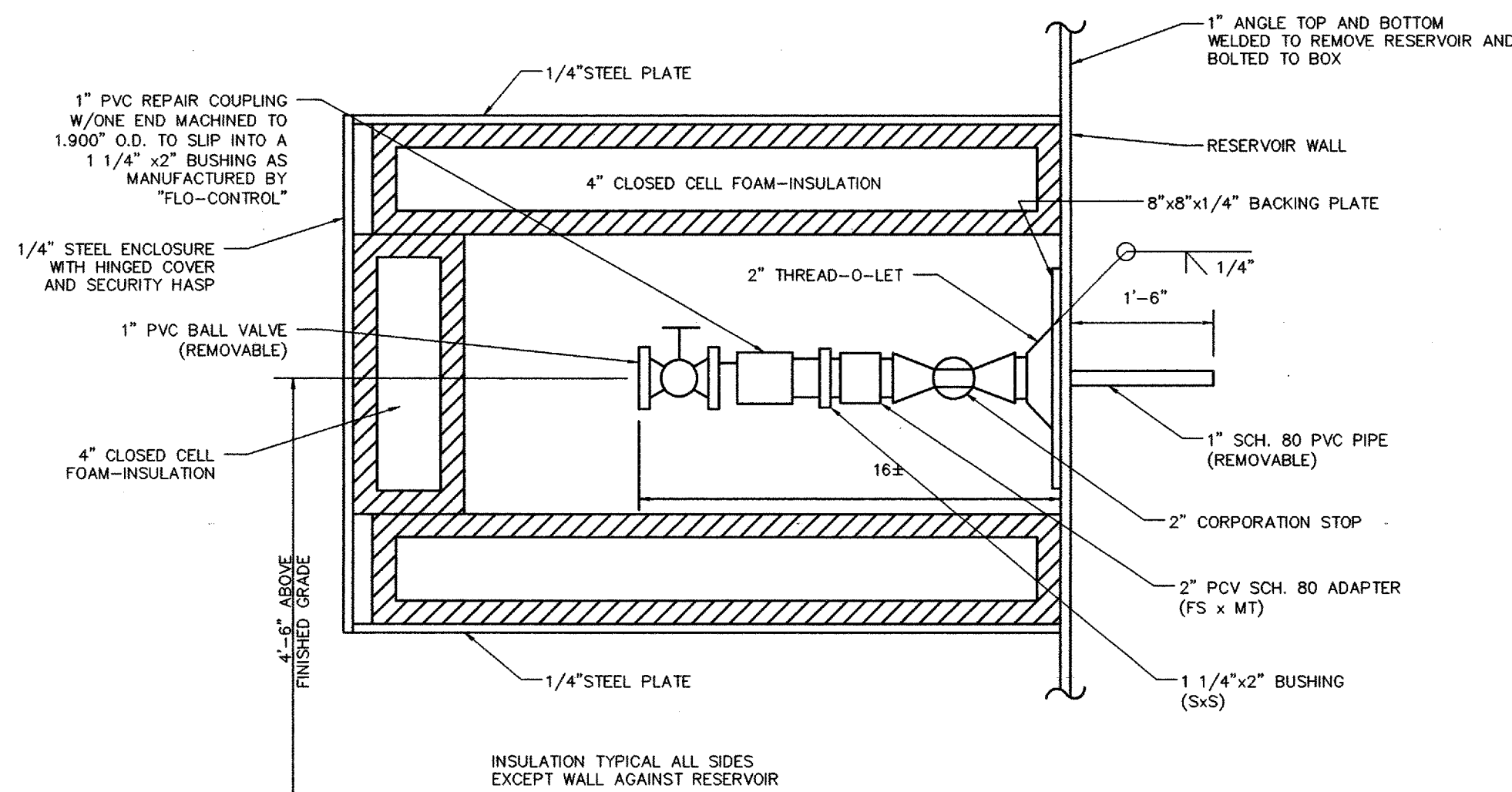
WILSON & COMPANY

CPN 760682

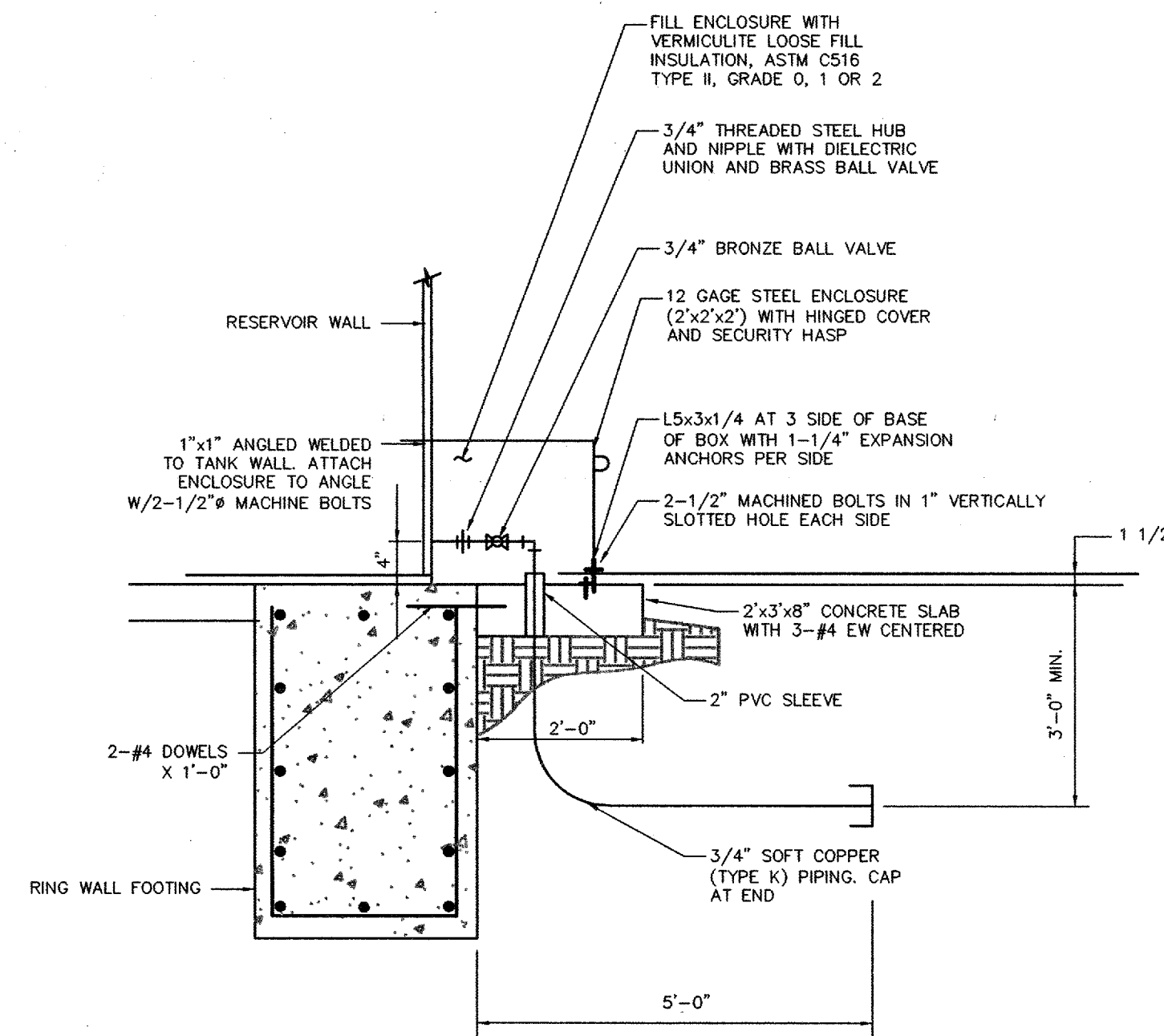




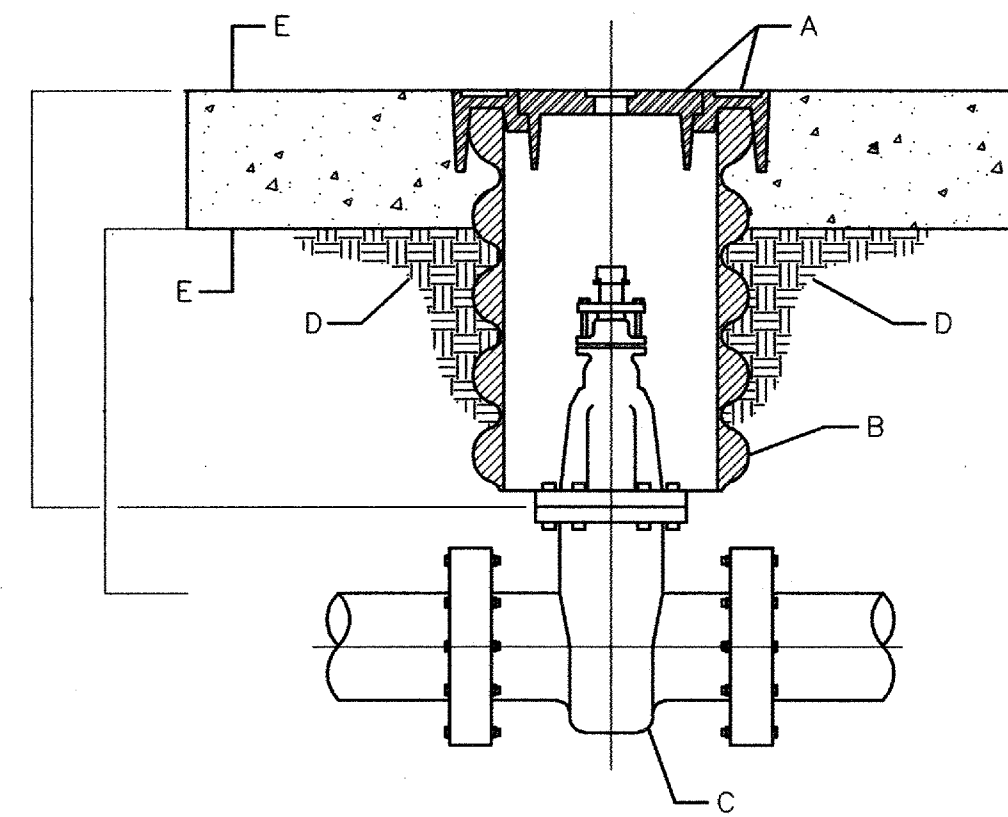
1 HIGH LEVEL PROBE DETAIL  
N.T.S. TO BE LOCATED INSIDE TANK @ LADDER



3 SAMPLING STATION DETAIL  
N.T.S. LOCATION ON TANK WALL TO BE SELECTED BY WATER UTILITY DEPARTMENT, IN CONJUNCTION WITH THE ENGINEER.

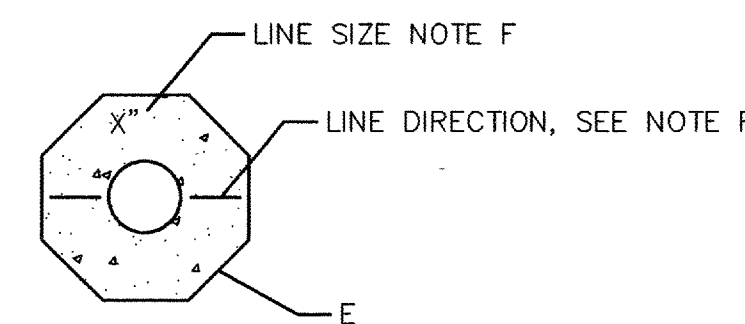


2 RESERVOIR PRESSURE SENSOR ENCLOSURE  
N.T.S. EXACT LOCATION OF ENCLOSURE ON TANK WALL TO BE SELECTED BY THE WATER UTILITY DEPARTMENT IN CONJUNCTION WITH THE ENGINEER.



GENERAL NOTES

- VALVE BOX AND RING COVER PER C.O.A. STD. DWG 2328
- 10" DIA. RIBBED OR CORRUGATED PVC OR PE PIPE WITH SMOOTH INTERIOR (C-900).
- NEW OR EXISTING VALVE.
- COMPACTED BACKFILL. SOIL OR BASE COURSE MATERIAL (95% COMPACTION). SEE SECTION 701.
- CONCRETE COLLAR PER C.O.A. STD. DWG. 2461.
- TOP OF CONCRETE SHALL BE TAMPED WITH LINE SIZE AND DIRECTION. MINIMUM LETTER SIZE SHALL BE 3" IN HEIGHT.
- MIN. 6" OR MATCH EXISTING



LABEL REQUIREMENTS

COA WATER VALVE BOX STD. DWG. 2326  
NOT TO SCALE

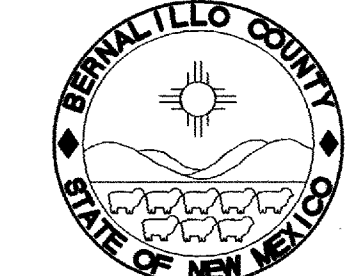
NOTES:

- TANK GRADING IS BY THIS CONTRACT. GRADING IS SUBJECT TO MINOR CHANGE.
- WATER TREATMENT BUILDING CONSTRUCTION (BID PACKAGE D) WILL FOLLOW BY APPROXIMATELY 2 MONTHS THE INITIATION OF THIS ABOVE GROUND WATER TANK CONSTRUCTION. SEE SPECIFICATIONS.
- WATER FOR DUST CONTROL AND COMPACTION SHALL BE PROVIDED BY THE CONTRACTOR.
- SEED ALL EXCAVATED AND FILLED AREAS WITH NATIVE GRASS SEEDING, EXCEPT FOR GRAVEL PAD.

AS-BUILT INFORMATION		BENCH MARKS		SURVEY INFORMATION		ENGINEER'S SEAL		REVISIONS		REMARKS	
CONTRACTOR	DATE	ACS 1-KS	(NO PUBLISHED DESCRIPTION AVAILABLE)	NO.	BY			NO.	DATE	NO.	DATE
WORK BY	DATE	COORDS.	1483795.076, 333607.752 (NAD 1927)	DATE	BY			DESIGNED BY	DATE	DESIGNED BY	DATE
INSPECTOR'S ACCEPTANCE BY	DATE	CGG	0.09996544427	DATE	BY			DRAWN BY	DATE	DRAWN BY	DATE
CONTRACTOR'S ACCEPTANCE BY	DATE	ELEVATION	5794.218 FT. (NAVD 29)	DATE	BY			CHECKED BY	DATE	CHECKED BY	DATE

RECORD DRAWING  
DATE 4/21/06  
BY DDB

APPROVE  
APR 27 2005  
DESIGN REVIEW COMMITTEE



ENGINEERING DIVISION

PROJECT NO. TS 04-07-B SHEET 9 of 9

WILSON & COMPANY

CPN 760682