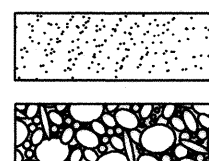


File Path: E:\WORK\06-08-2008  
File Name: 61882CV.DWG  
Plot Date: 06-08-2008  
Plot Time: 1:47 pm

## LEGEND

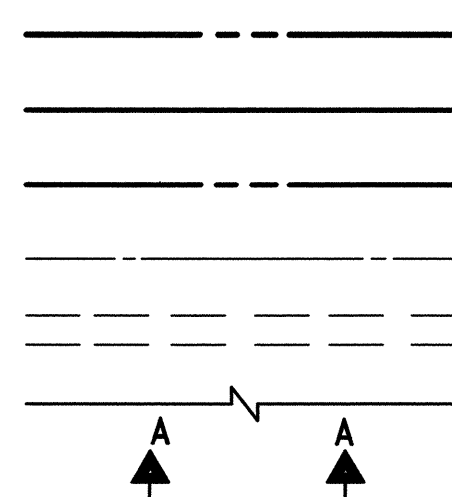
### MATERIALS

CONCRETE  
RIP-RAP



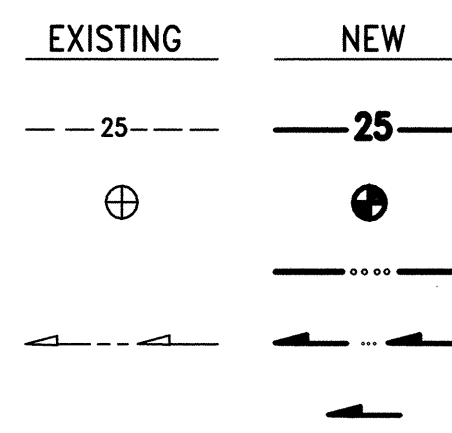
### LINES

SUBDIVISION BOUNDARY  
PROPERTY LINE (PLAN)  
PROPERTY LINE (SECTION)  
CENTERLINE  
EASEMENT LINE  
MATCH LINE  
SECTION CUT LINE



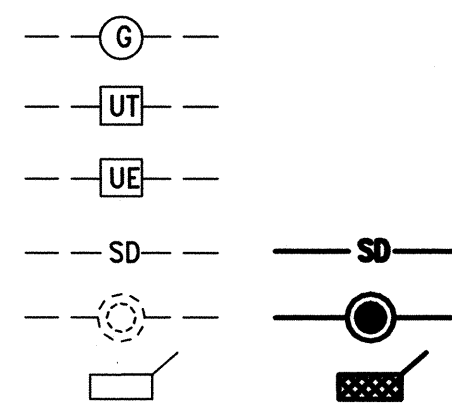
### EARTHWORK

CONTOUR LINE  
SPOT ELEVATION  
PROJECT / PHASE BOUNDARY  
FLOWLINE  
DIRECTION OF FLOW



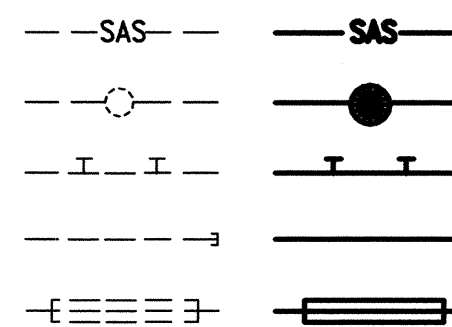
### MISCELLANEOUS UTILITIES

GAS LINE  
UNDERGROUND TELEPHONE  
UNDERGROUND ELECTRICAL  
STORM DRAIN  
STORM DRAIN MANHOLE  
STORM DRAIN INLET



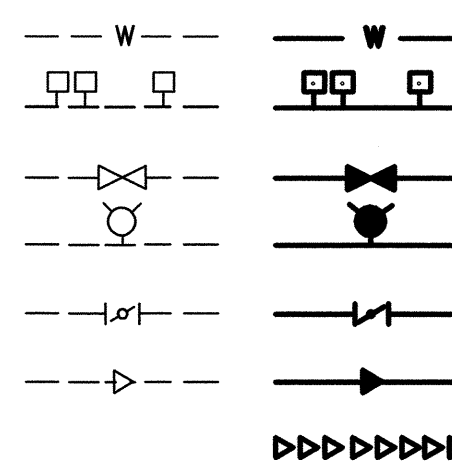
### SANITARY SEWER

SANITARY SEWER LINE  
SANITARY SEWER MANHOLE  
SAS SERVICE CONNECTIONS  
SAS CAP OR PLUG  
ENCASEMENT



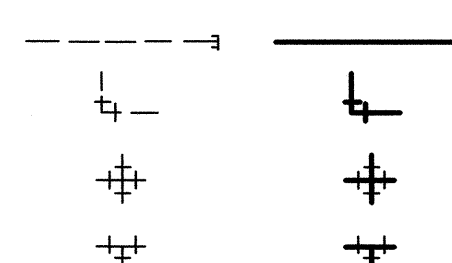
### WATER

WATER LINE  
WATER SERVICE CONNECTIONS  
GATE VALVE  
FIRE HYDRANT  
BUTTERFLY VALVE  
REDUCER  
WATER PRESSURE ZONE BOUNDARY



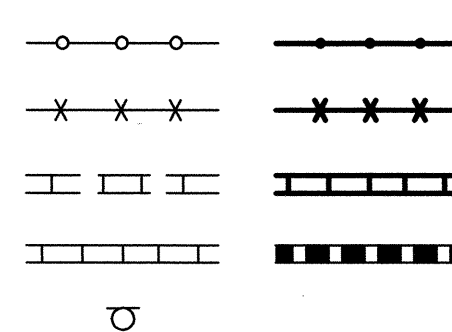
### WATER FITTINGS

CAPS AND PLUGS  
ELBOW  
CROSS  
TEE



### MISCELLANEOUS

CHAINLINK FENCE  
FIELD FENCE  
COMMON YARD WALL  
RETAINING WALL  
POWER OR TELEPHONE POLE



1 2 3 4 5 6 7 8 9 10 11 12 13 14 15  
16-776366-61-2067

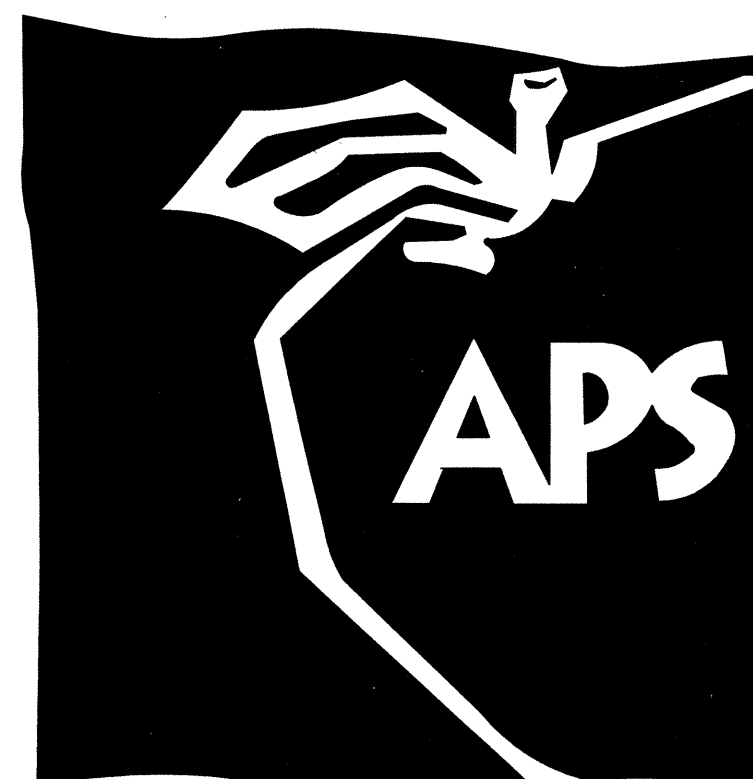
## CONSTRUCTION PLANS

for

# APS PROTOTYPE ELEMENTARY #3 - EL RANCHO GRANDE TRACT 8-A1-A PUBLIC WATER LINE IMPROVEMENTS

ALBUQUERQUE, NEW MEXICO

JUNE, 2008



### INDEX OF DRAWINGS

SHEET NO	DESCRIPTION
1	COVER SHEET, VICINITY MAP, GENERAL NOTES, LEGEND AND INDEX OF DRAWINGS
2	EASEMENT SURVEY
3	OVERALL PUBLIC WATER LINE PLAN
SHEET NO	PUBLIC WATER AND SANITARY SEWER IMPROVEMENTS (ABCWUA)
4	WATER LINE "A" PLAN AND PROFILE STA 10+00 TO STA 17+00
5	WATER LINE "A" PLAN AND PROFILE STA 17+00 TO STA 22+58.99
6	WATER LINE "B" PLAN AND PROFILE STA 10+00 TO STA 14+42.16



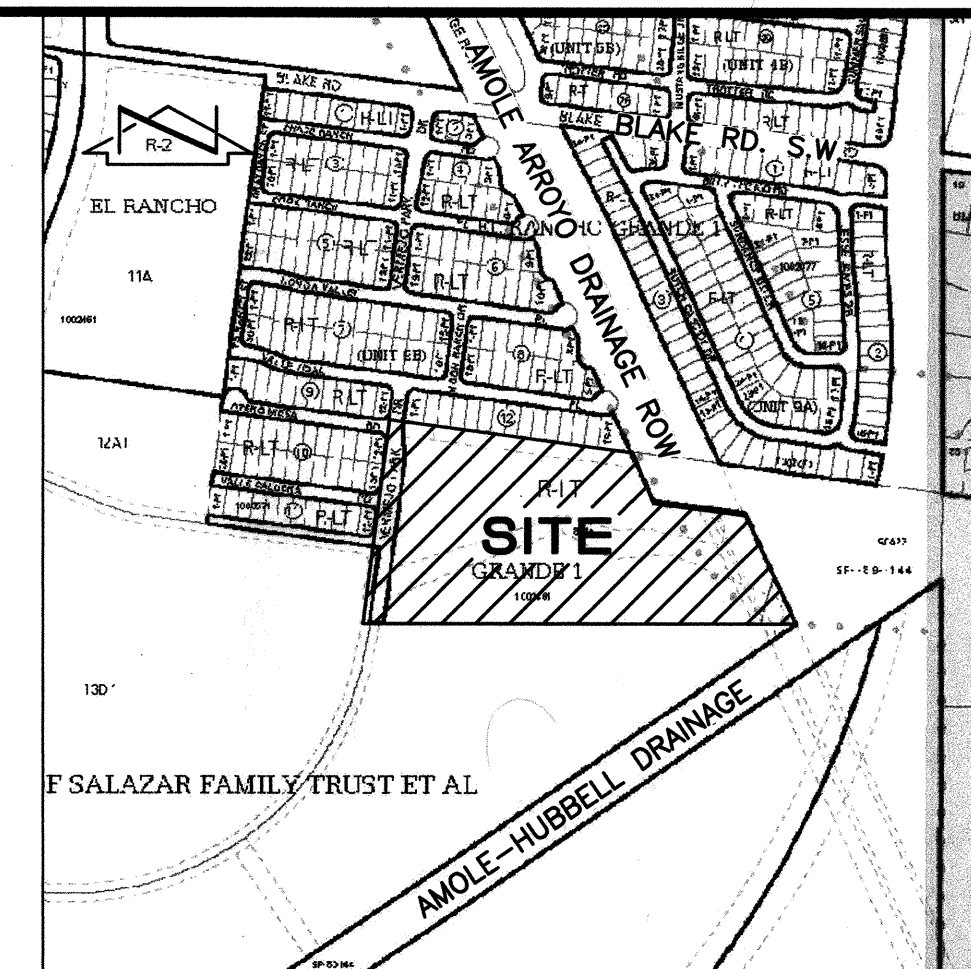
### CERTIFICATE OF SUBSTANTIAL COMPLIANCE

I, J. GRAEME MEANS, NMPE 13676, OF THE FIRM HIGH MESA CONSULTING GROUP, HEREBY CERTIFY THAT THE INFRASTRUCTURE CONSTRUCTED AS PART OF THIS PROJECT HAS BEEN INSPECTED BY ME OR PERSONNEL UNDER MY DIRECT SUPERVISION AND, TO THE BEST OF MY KNOWLEDGE AND BELIEF, HAS BEEN CONSTRUCTED IN ACCORDANCE WITH THE PLANS AND SPECIFICATIONS AND THE ORIGINAL DESIGN INTENT OF THE CITY ENGINEER APPROVED PLANS DATED 6/11/2008. THE RECORD INFORMATION EDITED ONTO THIS ORIGINAL DESIGN DOCUMENT HAS BEEN OBTAINED BY ME OR BY PERSONNEL UNDER MY DIRECT SUPERVISION WITH AS-BUILT SURVEY DATA OBTAINED 1/23/09 UNDER THE DIRECT SUPERVISION OF CHARLES G. CALA, JR., NMPS 11184, ALSO OF HIGH MESA CONSULTING GROUP, AND IS TRUE AND CORRECT TO THE BEST OF MY KNOWLEDGE AND BELIEF. THESE RECORD DRAWINGS ARE NOT NECESSARILY COMPLETE AND INTENDED ONLY TO VERIFY SUBSTANTIAL COMPLIANCE OF THE DESIGN INTENT OF THE PROJECT. THOSE RELYING ON THIS DOCUMENT ARE ADVISED TO OBTAIN INDEPENDENT VERIFICATION OF ITS ACCURACY BEFORE USING IT FOR ANY OTHER PURPOSE. THIS CERTIFICATION IS SUBMITTED IN SUPPORT OF A REQUEST FOR ACCEPTANCE OF THE PROJECT BY THE CITY ENGINEER.

J. Graeme Means 02/26/2009  
J. GRAEME MEANS, NMPE 13676 DATE



APPROVED AS RECORD DRAWINGS  
DESIGN REVIEW SECTION  
CITY CONSTRUCTION ENGINEER  
Paul Olson  
DATE: 5-12-2009



VICINITY MAP  
SCALE: 1"=750'

N-09

### GENERAL NOTES:

- ALL WORK DETAILED ON THESE PLANS TO BE PERFORMED UNDER CONTRACT SHALL, EXCEPT AS OTHERWISE STATED OR PROVIDED FOR HEREON, BE CONSTRUCTED IN ACCORDANCE WITH THE CITY OF ALBUQUERQUE STANDARD SPECIFICATIONS-PUBLIC WORKS CONSTRUCTION-1986 - UPDATE NO. 7.
- TWO (2) WORKING DAYS PRIOR TO ANY EXCAVATION, CONTRACTOR MUST CONTACT NEW MEXICO ONE CALL SYSTEM, 260-1990, (ALBUQUERQUE AREA) 1-800-321-ALERT (2537) (STATEWIDE) FOR LOCATION OF EXISTING UTILITIES.
- IF ANY UTILITY LINES, PIPELINES, OR UNDERGROUND UTILITY LINES ARE SHOWN ON THESE DRAWINGS, THEY ARE SHOWN IN AN APPROXIMATE MANNER ONLY, AND SUCH LINES MAY EXIST WHERE NONE ARE SHOWN. IF ANY SUCH EXISTING LINES ARE SHOWN, THE LOCATION IS BASED UPON INFORMATION PROVIDED BY THE OWNER OF SAID UTILITY, AND THE INFORMATION MAY BE INCOMPLETE, OR MAY BE OBSOLETE BY THE TIME CONSTRUCTION COMMENCES. THE ENGINEER HAS CONDUCTED ONLY PRELIMINARY INVESTIGATION OF THE LOCATION, DEPTH, SIZE, OR TYPE OF EXISTING UTILITY LINES, PIPELINES, OR UNDERGROUND UTILITY LINES. THIS INVESTIGATION IS NOT CONCLUSIVE, AND MAY NOT BE COMPLETE, THEREFORE, MAKES NO REPRESENTATION PERTAINING THERETO, AND ASSUMES NO RESPONSIBILITY OR LIABILITY THEREFOR. THE CONTRACTOR SHALL INFORM ITSELF OF THE LOCATION OF ANY UTILITY LINE, PIPELINE, OR UNDERGROUND UTILITY LINE IN OR NEAR THE AREA OF THE WORK IN ADVANCE OF AND DURING EXCAVATION WORK. THE CONTRACTOR IS FULLY RESPONSIBLE FOR ANY AND ALL DAMAGE CAUSED BY ITS FAILURE TO LOCATE, IDENTIFY AND PRESERVE ANY AND ALL EXISTING UTILITIES, PIPELINES, AND UNDERGROUND UTILITY LINES. IN PLANNING AND CONDUCTING EXCAVATION, THE CONTRACTOR SHALL COMPLY WITH STATE STATUTES, MUNICIPAL AND LOCAL ORDINANCES, RULES AND REGULATIONS, IF ANY, PERTAINING TO THE LOCATION OF THESE LINES AND FACILITIES.
- SHOULD A CONFLICT EXIST BETWEEN THESE PLANS AND ACTUAL FIELD CONDITIONS, THE CONTRACTOR SHALL PROMPTLY NOTIFY THE ENGINEER IN WRITING SO THAT THE CONFLICT CAN BE RESOLVED WITH A MINIMUM AMOUNT OF DELAY FOR ALL PARTIES.
- THE CONTRACTOR SHALL MAINTAIN ACCESS TO ADJACENT PROPERTIES DURING CONSTRUCTION.
- ALL WORK ON THIS PROJECT SHALL BE PERFORMED IN ACCORDANCE WITH APPLICABLE FEDERAL, STATE AND LOCAL LAWS, RULES AND REGULATIONS CONCERNING SAFETY AND HEALTH.
- ALL UTILITIES AND UTILITY SERVICE LINES SHALL BE INSTALLED PRIOR TO PAVING.
- BACKFILL COMPACTION SHALL BE ACCORDING TO SPECIFIED STREET USE.
- TACK COAT REQUIREMENTS SHALL BE DETERMINED DURING CONSTRUCTION BY THE PROJECT ENGINEER.
- SIDEWALKS AND WHEELCHAIR RAMPS WITHIN THE CURB RETURNS SHALL BE CONSTRUCTED WHEREVER A NEW CURB RETURN IS CONSTRUCTED.
- IF CURB IS DEPRESSED FOR A DRIVEPAD OR A HANDICAP RAMP, THE DRIVEPAD OR RAMP SHALL BE CONSTRUCTED PRIOR TO ACCEPTANCE OF THE CURB AND GUTTER.
- ALL STORM DRAINAGE FACILITIES SHALL BE COMPLETED PRIOR TO FINAL ACCEPTANCE.
- CONTRACTOR SHALL COORDINATE WITH THE WATER AUTHORITY FOR THE EXECUTION OF THE VALVE SHUT OFF PLAN, NOT LESS THAN SEVEN (7) WORKING DAYS IN ADVANCE OF ANY WORK THAT MAY AFFECT THE EXISTING PUBLIC WATER UTILITIES. ONLY WATER AUTHORITY PERSONNEL SHALL OPERATE EXISTING VALVES. REFER TO SECTION 18 OF THE SPECIFICATIONS. THE WATER AUTHORITY PHONE NUMBER IS (505) 857-8250.
- CONTRACTOR SHALL NOTIFY THE CITY SURVEYOR NOT LESS THAN SEVEN (7) DAYS PRIOR TO STARTING WORK IN ORDER THAT THE CITY SURVEYOR MAY TAKE NECESSARY MEASURES TO INSURE THE PRESERVATION OF SURVEY MONUMENTS. CONTRACTOR SHALL NOT DISTURB PERMANENT SURVEY MONUMENTS WITHOUT THE CONSENT OF THE CITY SURVEYOR AND SHALL NOTIFY THE CITY SURVEYOR AND BEAR THE EXPENSE OF REPLACING ANY THAT MAY BE DISTURBED WITHOUT PERMISSION. REPLACEMENT SHALL BE DONE ONLY BY THE CITY SURVEYOR. WHEN A CHANGE IS MADE IN THE FINISHED ELEVATION OF THE PAVEMENT OF ANY ROADWAY IN WHICH A PERMANENT SURVEY MONUMENT IS LOCATED, CONTRACTOR SHALL, AT HIS OWN EXPENSE, ADJUST THE MONUMENT COVER TO THE NEW GRADE UNLESS OTHERWISE SPECIFIED. REFER TO SECTION 4.4 OF THE SPECIFICATIONS.
- FIVE (5) WORKING DAYS PRIOR TO BEGINNING CONSTRUCTION THE CONTRACTOR SHALL SUBMIT TO THE CONSTRUCTION CO-ORDINATION DIVISION A DETAILED CONSTRUCTION SCHEDULE. TWO (2) WORKING DAYS PRIOR TO CONSTRUCTION THE CONTRACTOR SHALL OBTAIN A BARRICADING PERMIT FROM THE CONSTRUCTION CO-ORDINATION DIVISION. CONTRACTOR SHALL NOTIFY BARRICADE ENGINEER (924-3400) PRIOR TO OCCUPYING AN INTERSECTION. CONTRACTOR MUST REFER TO SECTION 19 OF THE STANDARD SPECIFICATION FOR TRAFFIC CONTROL.
- ALL STREET STRIPING ALTERED OR DESTROYED SHALL BE REPLACED WITH PLASTIC REFLECTORIZED STRIPING BY CONTRACTOR TO EXISTING LOCATION OR AS INDICATED BY THIS PLAN SET.
- CAUTION: THESE DRAWINGS DO NOT INCLUDE NECESSARY COMPONENTS FOR CONSTRUCTION SAFETY WHICH SHALL REMAIN THE RESPONSIBILITY OF THE CONTRACTOR. ALL EXCAVATION, TRENCHING AND SHORING ACTIVITIES MUST BE CARRIED-OUT IN ACCORDANCE WITH OSHA 29 CFR 1926, SUBPART P-EXCAVATIONS.
- ANY WORK OCCURRING WITHIN AN ARTERIAL ROADWAY REQUIRES TWENTY-FOUR HOUR CONSTRUCTION.
- CONTRACTOR SHALL MAINTAIN A GRAFFITI-FREE WORK SITE. CONTRACTOR SHALL PROMPTLY REMOVE ANY AND ALL GRAFFITI FROM EQUIPMENT, WHETHER PERMANENT OR TEMPORARY.
- WHEN APPLICABLE, CONTRACTOR SHALL SECURE, ON BEHALF OF THE OWNER AND OPERATORS, "TOPSOIL DISTURBANCE PERMIT" FROM THE CITY AND/OR FILE A NOTICE OF INTENT (N.O.I.) WITH THE EPA PRIOR TO BEGINNING CONSTRUCTION.

**HIGH MESA Consulting Group**  
FORMERLY JEFF MORTENSEN AND ASSOCIATES, INC.

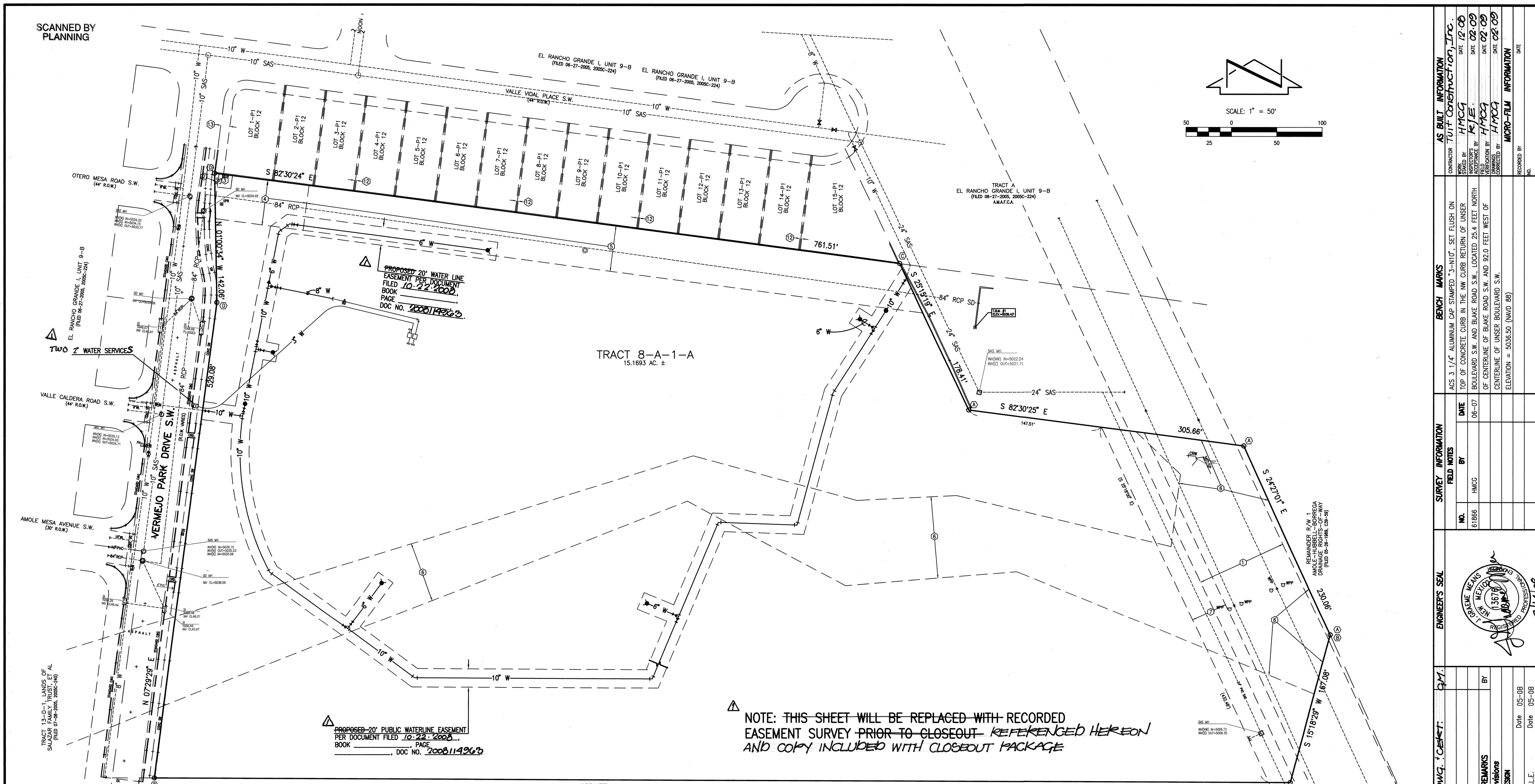
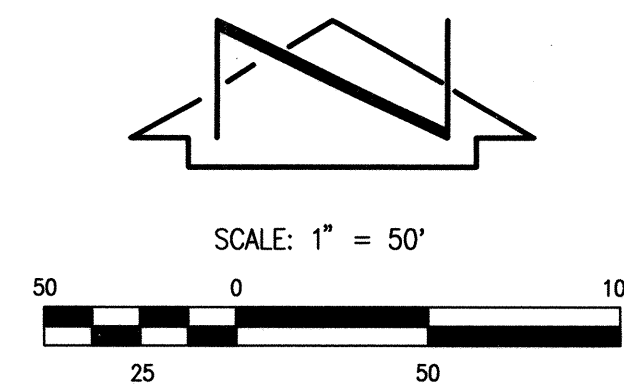
6010-B MIDWAY PARK BLVD., NE • ALBUQUERQUE, NEW MEXICO 87109  
PHONE: 505.345.4250 • FAX: 505.345.4254 • www.highmesacg.com

2006.188.2

REV.	1-G	CITY ENGINEER	02-09	DATE	USER	DEPARTMENT	DATE	USER	DEPARTMENT	DATE
ENGINEERS STAMP & SIGNATURE			APPROVALS		ENGINEER		DATE		*****	
			DRC Chairman		N/A		7/18/08		APPROVED FOR CONSTRUCTION	
			Transportation		N/A		7/18/08			
			Water/Wastewater		N/A		6-11-08			
			Hydrology		N/A		7/8/08			
			C.I.P.		N/A					
Const. Mngmt.									WATER AUTHORITY	
Const. Coord.									City Engineer	
Project No.			763661		SHEET		1		OF 6	



SCANNED BY  
PLANNING



NOTE: THIS SHEET WILL BE REPLACED WITH RECORDED  
EASEMENT SURVEY PRIOR TO CLOSEOUT REFERENCED HEREON  
AND COPY INCLUDED WITH CLOSEOUT PACKAGE

LEGAL DESCRIPTION	
TRACT 8-A1-A, EL RANCHO GRANDE I, ALBUQUERQUE, NEW MEXICO, AS THE SAME IS SHOWN AND DESIGNATED ON THE PLAT FILED IN THE OFFICE OF THE COUNTY CLERK OF BERNALILLO COUNTY, NEW MEXICO ON FEBRUARY 07, 2006, BOOK 2006C, PAGE 43.	
SURVEY NOTE	
THIS IS NOT A BOUNDARY SURVEY; DATA IS SHOWN FOR ORIENTATION ONLY. THE BOUNDARY INFORMATION DEPICTED BY THIS PLAN IS BASED UPON THE BOUNDARY SURVEY PREPARED BY HIGH MESA CONSULTING GROUP NMPS NO. 11184, DATED 06/27/2007. TOPOGRAPHIC SURVEY INFORMATION IS BASED UPON A TOPOGRAPHIC SURVEY PREPARED BY HIGH MESA CONSULTING GROUP ON 06/27/2007, NMPS NO.11184. EXISTING UTILITY INFORMATION SUPPLEMENTED BASED ON CITY AS-BUILT-DRAWINGS.	
LEGEND	
✕	EXISTING WATER GATE VALVE
✕	PROPOSED WATER GATE VALVE
➤	REDUCER
○	EXISTING SANITARY SEWER MANHOLE
⬢	PROPOSED FIRE HYDRANT
⬢	WATER METER
●	AIR RELEASE VALVE

KEYED NOTES	
EASEMENTS	
①	APPROXIMATE LOCATION 100' PNM EASEMENT GRANTED BY DOCUMENT FILED 04-12-1956, BOOK D348, PAGE 43
②	REMAINDER 60' PUBLIC ROADWAY, UTILITY AND DRAINAGE EASEMENT GRANTED BY PLAT 2003C-73
③	15'x15' PNM SWITCH GEAR EASEMENT GRANTED BY PLAT 2005C-361
④	50' PUBLIC STORM SEWER EASEMENT GRANTED BY DOCUMENT FILED 04-19-2005, BOOK A95, PAGE 3819, DOC. NO. 2005053980
⑤	50' PUBLIC STORM SEWER EASEMENT GRANTED BY PLAT 2005C-361
⑥	APPROXIMATE LOCATION OF FLOOD PLAIN DRAINAGE EASEMENT GRANTED BY PLAT C30-91 AND DEPICTED ON PLAT 2003C-73
⑦	40' PUBLIC SANITARY SEWER EASEMENT GRANTED BY PLAT 2005C-361
EASEMENTS - OFFSITE	
⑧	40' PUBLIC SANITARY SEWER EASEMENT GRANTED BY DOCUMENT FILED 06-09-2004, BOOK A79, PAGE 271, DOC. NO. 2004080483
⑨	BLANKET SANITARY SEWER EASEMENT ON TRACT A-1 (A-1-C) BENEFITTING TRACT 13-D-1 GRANTED BY PLAT 2005C-240
⑩	BLANKET PUBLIC DRAINAGE EASEMENT ON TRACT A (A-1-C) GRANTED BY PLAT 2003C-223
⑪	60' PUBLIC ROADWAY EASEMENT AND PUBLIC UTILITY EASEMENT GRANTED BY PLAT 2005C-240
⑫	2' PRIVATE DRAINAGE EASEMENT (TYPICAL) GRANTED BY PLAT 2005C-224
⑬	10' PUBLIC UTILITY EASEMENT GRANTED BY PLAT 2005C-224

**HIGH MESA Consulting Group**  
FORMERLY JEFF MORTENSEN AND ASSOCIATES, INC.  
4010-B MIDWAY PARK BLVD. NE • ALBUQUERQUE, NEW MEXICO 87109  
PHONE: 505.345.4250 • FAX: 505.345.4254 • www.hghmesacg.com  
**2006.188.2**

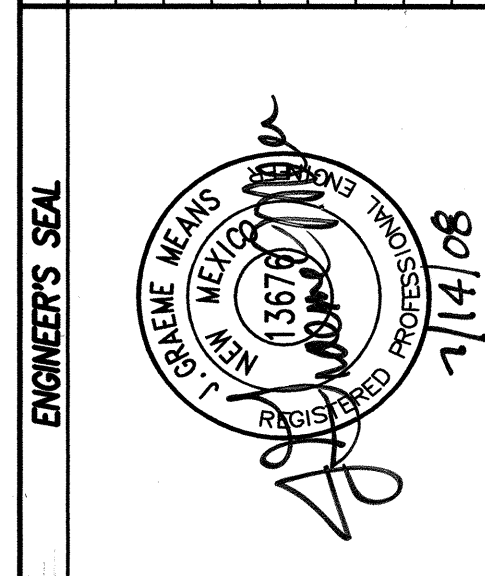
**CITY OF ALBUQUERQUE**  
PUBLIC WORKS DEPARTMENT  
ENGINEERING DEVELOPMENT GROUP  
**TITLE: OVERALL WATER LINE PLAN (W/O SITE IMPROVEMENTS)**  
**APS PROTOTYPE #3 - EL RANCHO GRANDE TRACT 8-A1-A**  
**PUBLIC WATER LINE IMPROVEMENTS**

Design Review Committee  
**APPROVED**  
JUL 18 2008  
DESIGN REVIEW COMMITTEE

City Engineer Approval  
**APPROVED**  
NOV 24 2008  
CITY ENGINEER

City Project No. **763661** Zone Map No. **N-09** Sheet **2** of **6**

AS BUILT INFORMATION	
CONTRACTOR	TURT Construction, Inc.
DRAWN BY	HMCQ
DATE	12-08
BENCH MARKS	
AGS 3 1/4" ALUMINUM CAP STAMPED "3-N10", SET FLUSH ON TOP OF CONCRETE CURB IN THE NW CURB RETURN OF UNSER BOULEVARD S.W. AND BLAKE ROAD S.W., LOCATED 25.4 FEET NORTH OF CENTERLINE OF BLAKE ROAD S.W. AND 92.0 FEET WEST OF CENTERLINE OF UNSER BOULEVARD S.W.	
ELEVATION = 5036.50 (NAVD 88)	
SURVEY INFORMATION	
FIELD NOTES	
NO.	61866
DATE	08-07
BY	HMCQ
ENGINEER'S SEAL	
NO.	
DATE	
BY	
REMARKS	
DESIGN	
REVISIONS	
NO.	
DATE	
BY	
DESIGNED BY	G.M.
DATE	05-08
DRAWN BY	G.M./D.M.H./B.L.E.
DATE	05-08
CHECKED BY	G.M.
DATE	07-08

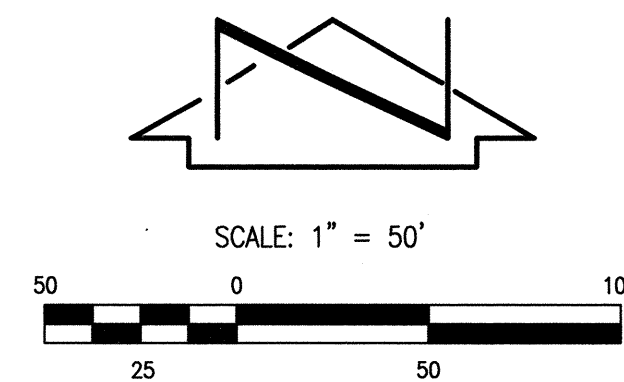


File Path: C:\Users\jmor\Documents\2006\2006-188.2\2006-188.2.dwg  
File Name: 61866.dwg  
Plot Date: 07-14-2008  
Plot Time: 10:51 am

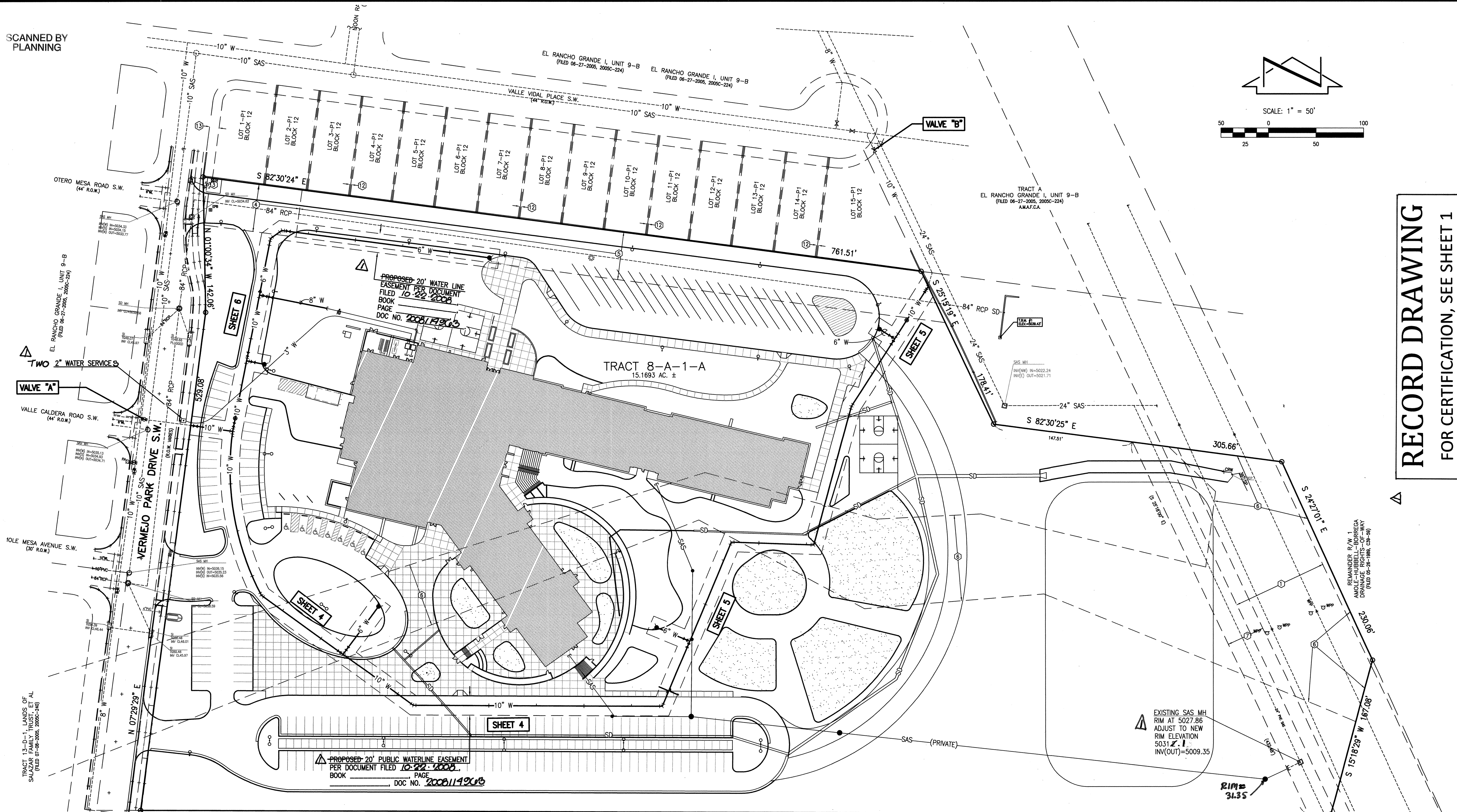
**RECORD DRAWING**  
FOR CERTIFICATION, SEE SHEET 1



SCANNED BY  
PLANNING



**RECORD DRAWING**  
FOR CERTIFICATION, SEE SHEET 1



AS BUILT INFORMATION		BENCH MARKS		SURVEY INFORMATION		ENGINEER'S SEAL		REMARKS		DESIGN		CITY PROJECT NO.		Zone Map No.		Sheet		Of	
CONTRACTOR	Tut Construction, Inc.	DATE	12-08	NO.	61886	DATE	08-07	BY	HMCC	DATE	05-08	City Project No.	763661	Zone Map No.	N-09	Sheet	3	Of	6
DESIGNED BY	HMCC	DATE	08-08	NO.		DATE		BY		DATE	05-08								
CHECKED BY	HMCC	DATE	08-08	NO.		DATE		BY		DATE	05-08								
RECORDED BY	HMCC	DATE	08-08	NO.		DATE		BY		DATE	05-08								
MICRO-FILM INFORMATION		RECORDING INFORMATION		RECORDING INFORMATION		RECORDING INFORMATION		RECORDING INFORMATION		RECORDING INFORMATION		RECORDING INFORMATION		RECORDING INFORMATION		RECORDING INFORMATION		RECORDING INFORMATION	

Plot Date: 06-05-2008  
Plot Time: 1:48 pm  
File Path: E:\WORK\61882SP.DWG  
File Name: 61882SP.DWG

RECORD DRAWING LEGEND	
INSTALL	RECORD INFORMATION (VERIFIED BY ENGINEER)
TP	RECORD INFORMATION (VERIFIED BY ENGINEER)
TE	RECORD INFORMATION (VERIFIED BY ENGINEER)
Y	AS-CONSTRUCTED = AS-DESIGNED (VERIFIED BY ENGINEER)
8+02.4	AS-CONSTRUCTED = AS-DESIGNED (VERIFIED BY AS-BUILT SURVEY)
40.16' RT.	RECORD INFORMATION (FROM AS-BUILT SURVEY)
	RECORD INFORMATION (FROM AS-BUILT SURVEY)

LEGAL DESCRIPTION	
TRACT 8-A-1-A, EL RANCHO GRANDE I, ALBUQUERQUE, NEW MEXICO, AS THE SAME IS SHOWN AND DESIGNATED ON THE PLAT FILED IN THE OFFICE OF THE COUNTY CLERK OF BERNALILLO COUNTY, NEW MEXICO ON FEBRUARY 07, 2006, BOOK 2006C, PAGE 43.	
SURVEY NOTE	
THIS IS NOT A BOUNDARY SURVEY; DATA IS SHOWN FOR ORIENTATION ONLY. THE BOUNDARY INFORMATION DEPICTED BY THIS PLAN IS BASED UPON THE BOUNDARY SURVEY PREPARED BY HIGH MESA CONSULTING GROUP NMPS NO. 11184, DATED 06/27/2007. TOPOGRAPHIC SURVEY INFORMATION IS BASED UPON A TOPOGRAPHIC SURVEY PREPARED BY HIGH MESA CONSULTING GROUP ON 06/27/2007, NMPS NO.11184. EXISTING UTILITY INFORMATION SUPPLEMENTED BASED ON CITY AS-BUILT-DRAWINGS.	
LEGEND	
EXISTING WATER GATE VALVE	PROPOSED WATER GATE VALVE
REDUCER	EXISTING SANITARY SEWER MANHOLE
PROPOSED FIRE HYDRANT	WATER METER
AIR RELEASE VALVE	

KEYED NOTES	
EASEMENTS	
1	APPROXIMATE LOCATION 100' PNM EASEMENT GRANTED BY DOCUMENT FILED 04-12-1956, BOOK D348, PAGE 43
2	REMAINDER 60' PUBLIC ROADWAY, UTILITY AND DRAINAGE EASEMENT GRANTED BY PLAT 2003C-73
3	15'x15' PNM SWITCH GEAR EASEMENT GRANTED BY PLAT 2005C-361
4	50' PUBLIC STORM SEWER EASEMENT GRANTED BY DOCUMENT FILED 04-19-2005, BOOK A95, PAGE 3819, DOC. NO. 2005053980
5	50' PUBLIC STORM SEWER EASEMENT GRANTED BY PLAT 2005C-361
6	APPROXIMATE LOCATION OF FLOOD PLAIN DRAINAGE EASEMENT GRANTED BY PLAT C30-91 AND DEPICTED ON PLAT 2003C-73
7	40' PUBLIC SANITARY SEWER EASEMENT GRANTED BY PLAT 2005C-361
EASEMENTS - OFFSITE	
8	40' PUBLIC SANITARY SEWER EASEMENT GRANTED BY DOCUMENT FILED 06-09-2004, BOOK A79, PAGE 271, DOC. NO. 2004080483
9	BLANKET SANITARY SEWER EASEMENT ON TRACT A-1 (A-1-C) BENEFITING TRACT 13-D-1 GRANTED BY PLAT 2005C-240
10	BLANKET PUBLIC DRAINAGE EASEMENT ON TRACT A (A-1-C) GRANTED BY PLAT 2003C-223
11	60' PUBLIC ROADWAY EASEMENT AND PUBLIC UTILITY EASEMENT GRANTED BY PLAT 2005C-240
12	2' PRIVATE DRAINAGE EASEMENT (TYPICAL) GRANTED BY PLAT 2005C-224
13	10' PUBLIC UTILITY EASEMENT GRANTED BY PLAT 2005C-224

WATER VALVE SHUTOFF PLAN NOTES:	
1.	AT A MINIMUM, THE FOLLOWING VALVES SHALL BE CLOSED TO FACILITATE THE PROPOSED NON-PRESSURE CONNECTIONS: <ul style="list-style-type: none"><li>CONNECTION #1 (VERMEJO); EXISTING VALVE "A" AS SHOWN</li><li>CONNECTION #2 (NE CORNER); EXISTING VALVE "B" AS SHOWN</li></ul>
2.	WATER AUTHORITY PERSONNEL SHALL PERFORM ALL SHUTOFFS. THE CONTRACTOR SHALL NOT OPERATE ANY VALVES THAT MAY AFFECT SYSTEM OPERATIONS.
3.	THE CONTRACTOR SHALL REQUEST A WATER SHUTOFF IN WRITING, A MINIMUM OF SEVEN (7) DAYS IN ADVANCE PER STANDARD WATER AUTHORITY PROCEDURES.
4.	WITHIN FIVE (5) DAYS AFTER RECEIPT OF CONTRACTOR'S SHUTOFF REQUEST, TRIAL SHUTOFFS WILL BE CONDUCTED. THE WATER AUTHORITY SHALL LABOR AND APPURTENANCES NECESSARY TO VERIFY COMPLETENESS OF SHUTOFFS.
5.	THE CONTRACTOR SHALL HAVE ALL FITTINGS, MATERIALS AND EQUIPMENT ON SITE PRIOR TO VALVE SHUTOFF. ALL EXCAVATION SHALL BE COMPLETE EXCEPT AS NECESSARY TO MAINTAIN SAFE SYSTEM OPERATION WHILE UNDER PRESSURE.
6.	THE CONTRACTOR SHALL PROVIDE ALL RESTRAINTS AND THRUST BLOCKS NECESSARY TO EFFECT ALL NECESSARY SHUTOFFS AND CONNECTIONS.
7.	EXISTING WATER VALVE AND WATER LINE INFORMATION OBTAINED FROM CITY OF ALBUQUERQUE RECORD DRAWINGS.
8.	AT THE TIME OF WATER SHUTOFF APPLICATION, THE CONTRACTOR SHALL REQUEST THAT WATER AUTHORITY NOTIFY ALL AFFECTED PROPERTY OWNERS AT LEAST TWENTY-FOUR (24) HOURS IN ADVANCE OF THE RESPECTIVE SHUTOFFS.
9.	ALL VALVES REFERENCED ABOVE, ALSO SHOWN HEREON.

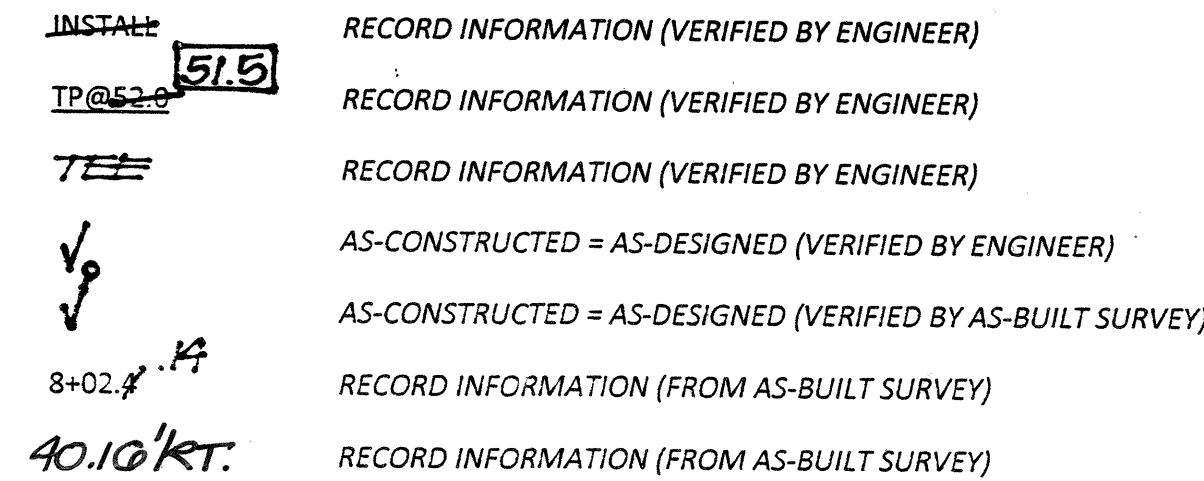
**HIGH MESA Consulting Group**  
6010-B MIDWAY PARK BLVD. NE • ALBUQUERQUE, NEW MEXICO 87109  
PHONE: 505.345.4250 • FAX: 505.345.4254 • www.highmesacg.com  
2006.188.2

CITY OF ALBUQUERQUE  
PUBLIC WORKS DEPARTMENT  
ENGINEERING DEVELOPMENT GROUP

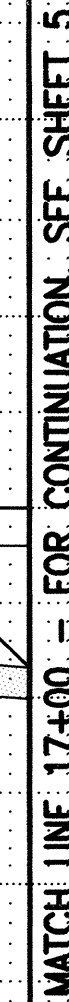
TITLE: OVERALL PUBLIC WATER LINE PLAN	
APS PROTOTYPE #3 - EL RANCHO GRANDE TRACT 8-A1-A	
PUBLIC WATER LINE IMPROVEMENTS	
Design Review Committee	City Engineer
APPROVED	APPROVED
JUL 18 2008	NOV 24 2008
DESIGN REVIEW COMMITTEE	CITY ENGINEER
City Project No.	763661
Zone Map No.	N-09
Sheet	3
Of	6



File Path:	E:\DATA\DATA\2006\0621\PLUG	Plot Date:	06-05-2008
File Name:	61882P4.DWG	Plot Time:	1:48 pm



PUBLIC WATER LINE "A"



1. ALL STATIONING IS BASED ON EASEMENT CENTERLINE UNLESS INDICATED OTHERWISE.
2. FOR ALL LINES 12" AND SMALLER, WATER MAIN SHALL BE PVC C-900 DR18 PIPE OR AS APPROVED BY THE WATER AUTHORITY. DUCTILE IRON IS AN ACCEPTABLE PIPE MATERIAL IN LIEU OF PVC.
3. FOR ALL LINES 14" AND LARGER, WATER MAIN SHALL BE DUCTILE IRON OR PVC C-905 OR AS APPROVED BY THE WATER AUTHORITY. CONCRETE CYLINDER IS AN ACCEPTABLE PIPE MATERIAL IN LIEU OF DUCTILE IRON.
4. WATER LINE SHALL HAVE A MINIMUM COVER OF 3'-0" (FINISHED GRADE TO TOP OF PIPE) FOR ALL LINES 12" OR SMALLER; 4'-0" MINIMUM COVER FOR LINES 14" OR LARGER. EXTRA DEPTH TRENCHING, IF REQUIRED, SHALL BE CONSIDERED INCIDENTAL TO CONSTRUCTION, THEREFORE, NO SEPARATE PAYMENT WILL BE MADE.
5. ELECTRONIC MARKER DISCS (EMD) SHALL BE INSTALLED IN ACCORDANCE WITH THE STANDARD SPECIFICATION, SECTION 170.
6. IN ACCORDANCE WITH SECTION 801 OF THE "STANDARD SPECIFICATIONS", METALIZED DETECTABLE WARNING TAPE SHALL BE INSTALLED 18" ABOVE ALL PVC PIPE INSTALLED ON THIS PROJECT.
7. VALVE STEM AND FIRE HYDRANT EXTENSIONS SHALL BE PROVIDED IN ACCORDANCE WITH THE STANDARD SPECIFICATIONS. THE COST OF EACH EXTENSION SHALL BE CONSIDERED INCIDENTAL TO CONSTRUCTION THEREFORE NO SEPARATE PAYMENT WILL BE MADE.
8. JOINT RESTRAINT SHALL BE PROVIDED ON ALL JOINTS OF FIRE HYDRANT LESS THAN 18" FIRE HYDRANT INCLUDING THE TEE AND FIRE HYDRANT.
9. FOR THE PURPOSES OF THIS PROJECT, ALL RESTRAINED JOINTS AND JOINT RESTRAINT SHALL BE MECHANICALLY RESTRAINED. JOINT RESTRAINT LENGTHS SPECIFIED HEREON ARE THE LENGTHS TO BE RESTRAINED EACH SIDE OF THE FITTING.
10. THE CONTRACTOR SHALL BE RESPONSIBLE FOR SELECTING APPROPRIATE METHODS AND METHODS TO EXCAVATE AND TRENCH AND INSTALL PIPE SO AS TO NOT EXCEED RIGHT-OF-WAY OR EASEMENT LIMITS, AND SO AS NOT TO INTERFERE WITH OTHER UTILITIES. THIS SHALL BE CONSIDERED INCIDENTAL TO TRENCHING, THEREFORE, NO SEPARATE PAYMENT WILL BE MADE.
11. THE CONTRACTOR SHALL BE RESPONSIBLE FOR PROTECTING, SUPPORTING AND REPLACING, IF DAMAGED, ALL OTHER UTILITIES ENCOUNTERED DURING CONSTRUCTION. THIS SHALL BE CONSIDERED INCIDENTAL TO TRENCHING, THEREFORE, NO SEPARATE PAYMENT WILL BE MADE.
12. WHERE WATER AND SANITARY SEWER LINES CROSS, THE SANITARY SEWER LINE SHALL BE INSTALLED AS PRESSURE PIPE BETWEEN MANHOLES IF 18 INCHES OF VERTICAL SEPARATION DOES NOT EXIST.
13. ALL FIRE HYDRANTS SHALL BE SECURELY WRAPPED IN BLACK PLASTIC UNTIL SUCH TIME AS THE NEW WATER LINE IS PUT INTO SERVICE BY THE WATER AUTHORITY PERSONNEL.

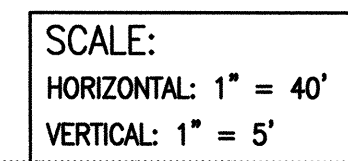
**HIGH MESA Consulting Group**  
FORMERLY JEFF MORTENSEN AND ASSOCIATES, INC.  
6010-B MIDWAY PARK BLVD. NE • ALBUQUERQUE, NEW MEXICO 87109  
PHONE: 505.345.4250 • FAX: 505.345.4254 • [www.highmesacg.com](http://www.highmesacg.com)

TITLE: LINE "A" PLAN AND PROFILE STA 10+00 TO 17+00  
APS PROTOTYPE #3 - EL RANCHO GRANDE TRACT 8-A1-A  
PUBLIC WATER LINE IMPROVEMENTS

[illegible]

City Project No.	763661	Zone Map No.	N-09	Sheet	4	Of	6
------------------	--------	--------------	------	-------	---	----	---





## RECORD DRAWING LEGEND

NOTE:  
EXISTING LINE FOUND TO  
BE APPROX. 6' NORTH OF  
EXPECTED LOCATION AND  
21 FT. HIGHER THAN AS-  
BUILT ELEVATION. ARV  
LOCATION ADJUSTED AND  
FITTINGS ADDED TO GET  
NEW LINE BACK TO DESIGN  
LOCATION AND ALIGNMENT.

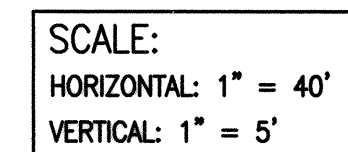


TITLE: LINE "A" STA 17+00 TO 22+58.99  
APS PROTOTYPE #3 - EL RANCHO GRANDE TRACT 8-A1-A  
PUBLIC WATER LINE IMPROVEMENTS

2006.188.2	763661	Zone Map No. N-09	Sheet 5	Of 6
------------	--------	----------------------	------------	---------



File Path:	E:\PROJECTS\2008-2009\1007-1008\1007-1008.Plot
Plot Date:	06-05-2008
File Name:	61882P6.DWG
Plot Time:	1:49 pm



### RECORD DRAWING LEGEND

5060  
5055  
5050  
5045  
5040  
5035  
5030



TITLE: LINE "B" STA 10+00 TO STA 13+92.07  
APS PROTOTYPE #3 - EL RANCHO GRANDE TRACT 8-A1-A  
PUBLIC WATER LINE IMPROVEMENTS

	Mo./Day/Yr.	Mo./Day/Yr.
Design Review Committee		
CITY ENGINEER APPROVAL		
JUL 18 2008		
DESIGN REVIEW COMMITTEE		
CITY ENGINEER		
Last Design Update		

City Project No.	763661	Zone Map No.	N-09	Sheet	6	Of	6
------------------	--------	--------------	------	-------	---	----	---