



BALLOON FIESTA PARK SANITARY SEWER DUMP STATION IMPROVEMENTS

CITY OF ALBUQUERQUE
DEPARTMENT OF MUNICIPAL DEVELOPMENT-Managing Department

September 9, 2008
Parks & Recreation Department-Owner

INDEX

SHEET NUMBER	DESCRIPTION
1	COVER SHEET
2	SANITARY SEWER DUMP STATION PLAN
3	DUMP STATION DETAILS

UTILITY COMPANY CONTACTS

CITY OF ALBUQUERQUE UTILITY DEVELOPMENT	QWEST
P.O. BOX 1293 ALBUQUERQUE, NEW MEXICO 87103 (505) 768-2719	201 THIRD STREET NW SUITE 700 ALBUQUERQUE, NEW MEXICO 87103 (505) 245-8706
PNM-ELECTRIC	ALBUQUERQUE BERNALILLO COUNTY WATER UTILITY AUTHORITY
4201 EDITH BOULEVARD NE ALBUQUERQUE, NEW MEXICO 87107 (505) 241-0525	P.O. BOX 1293 ALBUQUERQUE, NEW MEXICO 87103 (505) 873-6906
PNM-GAS	
4625 EDITH BOULEVARD NE ALBUQUERQUE, NEW MEXICO 87107 (505) 241-7745	

APPROVED AS RECORD DRAWINGS
CITY CONSTRUCTION ENGINEER
DATE: 9/9/08

Mark S. Holstad 9/9/08
APPROVED FOR CONSTRUCTION IN AMAFCA RIGHT OF WAY

Mark S. Holstad 9/9/08
APPROVED FOR CONSTRUCTION
MARK S. HOLSTAD, A.B.C.W.U.A.

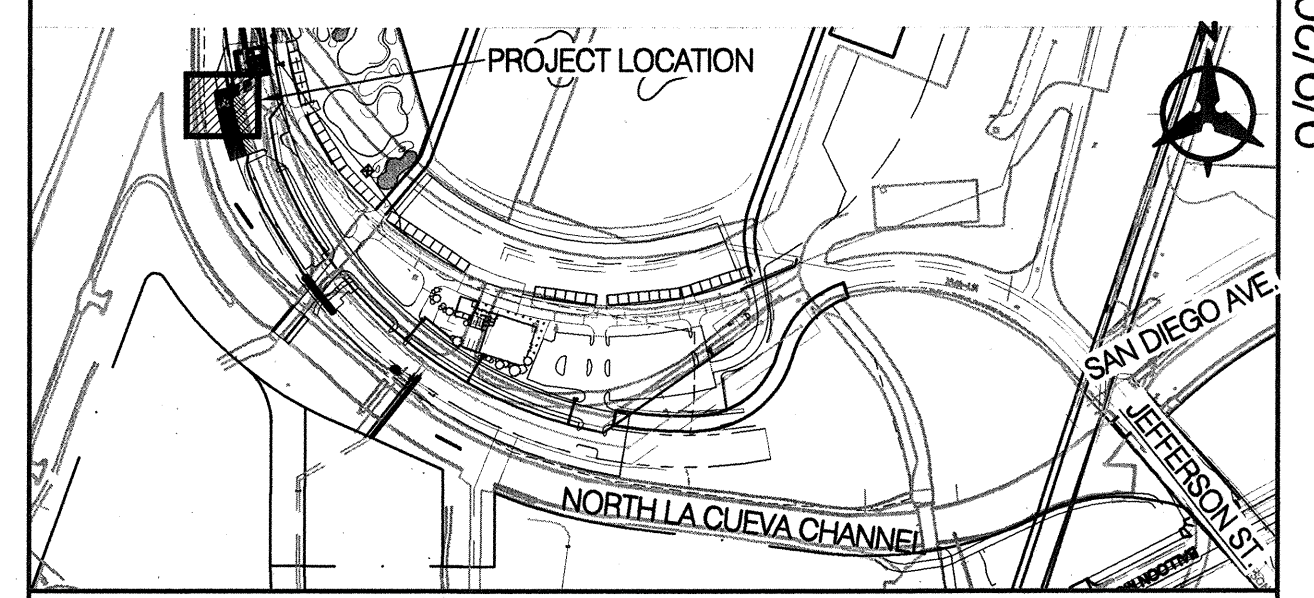
RECORD DRAWINGS

AMAFCA GENERAL NOTES:

- AMAFCA FIELD ENGINEER SHALL BE NOTIFIED 48 HOURS PRIOR TO ANY WORK WITHIN THE AMAFCA R/W. TELEPHONE (505)844-2215.
- NO WORK SHALL BE PERFORMED IN THE AMAFCA R/W BETWEEN MAY 15 AND OCTOBER 15 WITHOUT WRITTEN PERMISSION FROM AMAFCA.
- ALL SUB-GRADE, BACKFILL, AND EMBANKMENT SHALL BE COMPACTED TO 95% (\pm 2% OF OPTIMUM MOISTURE PER ASTM D-1557) WITHIN THE AMAFCA R/W. TESTING REPORTS SHALL BE PROVIDED TO AMAFCA FIELD ENGINEER.
- AMAFCA FIELD ENGINEER SHALL BE NOTIFIED 48 HOURS PRIOR TO FINAL INSPECTION OF ANY FACILITIES WITHIN THE AMAFCA R/W.
- ALL DISTURBED GROUND AREAS SHALL BE REVEGETATED IN ACCORDANCE WITH CITY OF ALBUQUERQUE STANDARD SPECIFICATIONS FOR PUBLIC WORKS CONSTRUCTION, SECTION 1012 NATIVE GRASS SEEDING, AS CURRENTLY UPDATED.
- ANY MONUMENTS DISTURBED OR DESTROYED SHALL BE REPLACED BY A NM LICENSED SURVEYOR AT THE CONTRACTOR'S EXPENSE. AMAFCA SHALL BE NOTIFIED 48 HOURS PRIOR TO ANY MONUMENT PLACEMENT.
- THE MAXIMUM WHEEL LOAD ALLOWED IN AMAFCA CHANNELS IS 12,000 POUNDS.
- NO TRACKED VEHICLES ARE ALLOWED IN AMAFCA CHANNELS REGARDLESS OF LOCATION WITHOUT WRITTEN PERMISSION FROM AMAFCA.
- CRANES OPERATING IN AMAFCA CHANNELS WITH OUTRIGGERS SHALL LIMIT THE OUTRIGGER FOOTPRINT LOAD AREA TO LESS THAN 12,000 POUNDS.

CONSTRUCTION NOTES:

- THE CONTRACTOR SHALL ABIDE BY ALL LOCAL, STATE, AND FEDERAL LAWS, RULES AND REGULATIONS WHICH APPLY TO THE CONSTRUCTION OF THESE IMPROVEMENTS.
- PRIOR TO CONSTRUCTION, CONTRACTOR SHALL EXCAVATE AND VERIFY THE HORIZONTAL AND VERTICAL LOCATIONS OF ALL POTENTIAL OBSTRUCTIONS. SHOULD A CONFLICT EXIST, THE CONTRACTOR SHALL NOTIFY THE ENGINEER OR CONSTRUCTION OBSERVER SO THAT THE CONFLICT CAN BE RESOLVED WITH A MINIMUM AMOUNT OF DELAY.
- ALL ELECTRICAL, TELEPHONE, CABLE TV, GAS AND OTHER UTILITY LINES, CABLES AND APPURTENANCES ENCOUNTERED DURING CONSTRUCTION THAT REQUIRE RELOCATION, SHALL BE COORDINATED WITH THAT UTILITY. THE CONTRACTOR SHALL BE RESPONSIBLE FOR COORDINATION OF ALL NECESSARY UTILITY ADJUSTMENTS. NO ADDITIONAL COMPENSATION WILL BE ALLOWED FOR DELAYS OR INCONVENIENCES CAUSED BY UTILITY COMPANY WORK CREWS. THE CONTRACTOR MAY BE REQUIRED TO RESCHEDULE HIS ACTIVITIES TO ALLOW UTILITY CREWS TO PERFORM THEIR REQUIRED WORK.
- DISPOSAL SITE FOR ALL EXCESS EXCAVATION MATERIAL, AND UNSUITABLE MATERIAL SHALL BE OBTAINED BY THE CONTRACTOR IN COMPLIANCE WITH APPLICABLE ENVIRONMENTAL REGULATIONS AND APPROVED BY THE CONSTRUCTION OBSERVER. ALL COSTS INCURRED IN OBTAINING A DISPOSAL SITE AND HAUL THERE TO SHALL BE CONSIDERED INCIDENTAL TO THE PROJECT AND NO SEPARATE MEASUREMENT OR PAYMENT SHALL BE MADE.
- THE CONTRACTOR IS RESPONSIBLE FOR PROTECTING THE EXISTING UTILITY LINES WITHIN THE CONSTRUCTION AREA. ANY DAMAGE TO EXISTING FACILITIES CAUSED BY CONSTRUCTION ACTIVITY SHALL BE REPAIRED OR REPLACED AT THE CONTRACTOR'S EXPENSE AND APPROVED BY THE CONSTRUCTION OBSERVER.
- CONSTRUCTION ACTIVITY SHALL BE LIMITED TO THE PROPERTY AND/OR PROJECT LIMITS. ANY DAMAGE TO ADJACENT PROPERTIES RESULTING FROM THE CONSTRUCTION PROCESS IS THE RESPONSIBILITY OF THE CONTRACTOR. ANY COSTS INCURRED FOR REPAIRS SHALL BE THE COST OF THE CONTRACTOR.
- OVERNIGHT PARKING OF CONSTRUCTION EQUIPMENT SHALL NOT OBSTRUCT DRIVEWAYS OR DESIGNATED TRAFFIC LANES. THE CONTRACTOR SHALL NOT STORE ANY EQUIPMENT OR MATERIAL WITHIN THE PUBLIC RIGHT-OF-WAY.
- THE CONTRACTOR SHALL OBTAIN ALL THE NECESSARY PERMITS FOR THE PROJECT PRIOR TO COMMENCING CONSTRUCTION (I.E. BARRICADING, SURFACE DISTURBANCE)
- THE CONTRACTOR SHALL BE RESPONSIBLE TO REPLACE AT HIS EXPENSE ANY AND ALL PROPERTY CORNERS DESTROYED DURING CONSTRUCTION. ALL PROPERTY CORNERS MUST BE RESET BY A REGISTERED LAND SURVEYOR.
- ALL PERMANENT PAVEMENT MARKING AND TRAFFIC SIGNING SHALL BE FURNISHED BY THE CONTRACTOR.
- THE CONTRACTOR SHALL FOLLOW THE CONSTRUCTION TRAFFIC CONTROL AND SIGNING PLAN SUBMITTED AND APPROVED PER SECTION 19.2 OF THE STANDARD SPECIFICATIONS. THE CONTRACTOR SHALL COORDINATE WITH THE CITY OF ALBUQUERQUE, TRAFFIC ENGINEERING DEPARTMENT, PRIOR TO BEGINNING ANY CONSTRUCTION WORK ON OR ADJACENT TO EXISTING STREETS.
- ALL BARRICADES AND CONSTRUCTION SIGNING SHALL CONFORM TO APPLICABLE SECTIONS OF THE "MANUAL OF UNIFORM TRAFFIC CONTROL DEVICES" (MUTCD), U.S. DEPARTMENT OF TRANSPORTATION, LATEST EDITION.
- THE CONTRACTOR SHALL MAINTAIN ALL CONSTRUCTION BARRICADES AND SIGNING AT ALL TIMES. THE CONTRACTOR SHALL VERIFY THE PROPER LOCATION OF ALL BARRICADING AT THE END AND BEGINNING OF EACH DAY.
- ALL SAWCUT PAVEMENT SHALL HAVE A UNIFORM EDGE AND BE SPRAYED WITH TACK COAT.
- WHEN ABUTTING NEW CURB AND GUTTER TO EXISTING PAVEMENT, A 1' WIDE SECTION OF EXISTING PAVEMENT ADJACENT TO THE CURB AND GUTTER SHALL BE SAWCUT, REMOVED, AND REPLACED AS PER THE STANDARD SPECIFICATIONS.
- THE CONTRACTOR SHALL ASSUME RESPONSIBILITY FOR ANY DAMAGE TO EXISTING PAVEMENTS, PAVEMENT MARKINGS, CURB & GUTTER, DRIVE PADS, WHEELCHAIR RAMPS, AND SIDEWALK DURING CONSTRUCTION, APART FROM THOSE SECTIONS INDICATED FOR REMOVAL ON THE PLANS AND SHALL REPAIR OR REPLACE PER COA STANDARDS, AT HIS OWN EXPENSE.
- FOR STORM DRAIN CONSTRUCTION, RCP PIPE JOINTS SHALL NOT BE GROUTED PRIOR TO FINAL INSPECTION. FINAL INSPECTION WILL DETERMINE JOINTS TO BE GROUTED FOR FINAL ACCEPTANCE OF THE CONSTRUCTION.
- ALL EXCAVATION, TRENCHING, AND SHORING ACTIVITIES MUST BE CARRIED-OUT IN ACCORDANCE WITH OSHA 29 CFR 1926.650 SUBPART P.
- PAVEMENT DROP-OFFS DURING CONSTRUCTION, CONTRACTOR TO PROVIDE AND MAINTAIN TEMPORARY TRANSITIONS DURING THE DURATION OF THE PROJECT.
- THE CONTRACTOR SHALL COORDINATE CONSTRUCTION ACTIVITIES AND SCHEDULES SUCH THAT THEY WILL NOT INTERFERE WITH SCHEDULED EVENTS AND NORMAL ACTIVITIES AT THE BALLOON FIESTA PARK AND GARDENS ON THE GREEN. THE CONTRACTOR SHALL PROVIDE A CONSTRUCTION SCHEDULE AS SPECIFIED IN SSP SECTION 1.4 THAT ILLUSTRATES THE CONTRACTOR'S ACTIVITIES RELATIVE TO SCHEDULED EVENTS AND OBTAIN APPROVAL FROM THE ENGINEER.
- DURING CONSTRUCTION, THE CONTRACTOR SHALL PROVIDE BIDIRECTIONAL ACCESS TO THE RESTAURANT AND GOLF CENTER AT THE BALLOON FIESTA PARK. TRAFFIC CONTROL SHALL CONFORM TO COA STANDARDS AND THE MUTCD.



VICINITY MAP ZONE MAP NO. B-17-Z

NOTICE TO CONTRACTORS

- AN EXCAVATION/CONSTRUCTION PERMIT WILL BE REQUIRED BEFORE BEGINNING ANY WORK WITHIN THE CITY RIGHT-OF-WAY.
- ALL WORK DETAILED ON THESE PLANS TO BE PERFORMED UNDER CONTRACT SHALL, EXCEPT AS OTHERWISE STATED OR PROVIDED FOR HEREON, BE CONSTRUCTED IN ACCORDANCE WITH THE CITY OF ALBUQUERQUE STANDARD SPECIFICATIONS FOR PUBLIC WORKS CONSTRUCTION, 1986 EDITION AS REVISED THROUGH AMENDMENT 1 TO UPDATE NO.7.
- TWO WORKING DAYS PRIOR TO ANY EXCAVATION, THE CONTRACTOR MUST CONTACT NEW MEXICO ONE CALL SYSTEM (260-1990) FOR LOCATION OF EXISTING UTILITIES.
- PRIOR TO CONSTRUCTION, THE CONTRACTOR SHALL EXCAVATE AND VERIFY THE HORIZONTAL AND VERTICAL LOCATIONS OF ALL OBSTRUCTIONS. SHOULD A CONFLICT EXIST, THE CONTRACTOR SHALL NOTIFY THE ENGINEER OR SURVEYOR IMMEDIATELY SO THAT THE CONFLICT CAN BE RESOLVED WITH A MINIMUM AMOUNT OF DELAY.
- SEVEN (7) WORKING DAYS PRIOR TO BEGINNING CONSTRUCTION, THE CONTRACTOR SHALL SUBMIT, TO THE CONSTRUCTION COORDINATION DIVISION, A DETAILED CONSTRUCTION SCHEDULE. TWO (2) WORKING DAYS PRIOR TO CONSTRUCTION, THE CONTRACTOR SHALL OBTAIN A BARRICADING PERMIT FROM THE CONST. COORDINATION DIVISION. CONTRACTOR SHALL NOTIFY CONSTRUCTION COORDINATION ENGINEER (924-3400) PRIOR TO OCCUPYING AN INTERSECTION. REFER TO SECTION 19 OF THE GENERAL CONDITIONS OF THE STANDARD SPECIFICATIONS.
- ALL WORK AFFECTING ARTERIAL ROADWAYS REQUIRES TWENTY-FOUR HOUR CONSTRUCTION.
- ALL STREET STRIPING ALTERED OR DESTROYED SHALL BE REPLACED W/ PLASTIC REFLECTORIZED PAVEMENT MARKING BY CONTRACTOR TO THE SAME LOCATION AS EXISTING, OR AS INDICATED BY THIS PLAN SET.
- CONTRACTOR SHALL NOTIFY THE ENGINEER NOT LESS THAN SEVEN (7) DAYS PRIOR TO STARTING WORK IN ORDER THAT THE CITY SURVEYOR MAY TAKE NECESSARY MEASURES TO ENSURE THE PRESERVATION OF SURVEY MONUMENTS. CONTRACTOR SHALL NOT DISTURB PERMANENT SURVEY MONUMENTS WITHOUT THE CONSENT OF THE CITY SURVEYOR AND SHALL NOTIFY THE CITY SURVEYOR AND BEAR THE EXPENSE OF REPLACING ANY THAT MAY BE DISTURBED WITHOUT PERMISSION. REPLACEMENT SHALL BE DONE ONLY BY THE CITY SURVEYOR. WHEN A CHANGE IS MADE IN THE FINISHED ELEVATIONS OF THE PAVEMENT OF ANY ROADWAY IN WHICH A PERMANENT SURVEY MONUMENT IS LOCATED, CONTRACTOR SHALL, AT HIS OWN EXPENSE, ADJUST THE MONUMENT COVER TO THE NEW GRADE UNLESS OTHERWISE SPECIFIED. REFER TO SECTION 4.4 OF THE GENERAL CONDITIONS OF THE STANDARD SPECIFICATIONS.
- CONTRACTOR SHALL RECORD DATA ON ALL UTILITY LINES AND ACCESSORIES AS REQUIRED BY THE CITY OF ALBUQUERQUE FOR THE PREPARATION OF "AS CONSTRUCTED" DRAWINGS. CONTRACTOR SHALL NOT COVER UTILITY LINES AND ACCESSORIES UNTIL ALL DATA HAS BEEN RECORDED.
- CONTRACTOR SHALL MAINTAIN A GRAFFITI-FREE WORK SITE. CONTRACTOR SHALL PROMPTLY REMOVE ANY GRAFFITI FROM ALL EQUIPMENT, WHETHER PERMANENT OR TEMPORARY.
- CONTRACTOR SHALL COORDINATE WITH THE ALBUQUERQUE/BERNALILLO COUNTY WATER UTILITY AUTHORITY (857-8200) SEVEN (7) WORKING DAYS IN ADVANCE OF ANY WORK THAT MAY AFFECT EXISTING PUBLIC WATER OR SEWER UTILITIES. EXISTING VALVES TO BE OPERATED BY ABOCA PERSONNEL ONLY. CONTRACTOR SHALL CONTACT THE WATER SYSTEMS DIVISION SEVEN (7) DAYS PRIOR TO NEEDING VALVES TURNED ON OR OFF.
- CONTRACTOR SHALL COORDINATE WITH LOS ALTOS GOLF COURSE PRIOR TO CONSTRUCTION WITHIN THE LIMITS OF THE COURSE. CONTACT DAVE SALAS (291-6284)

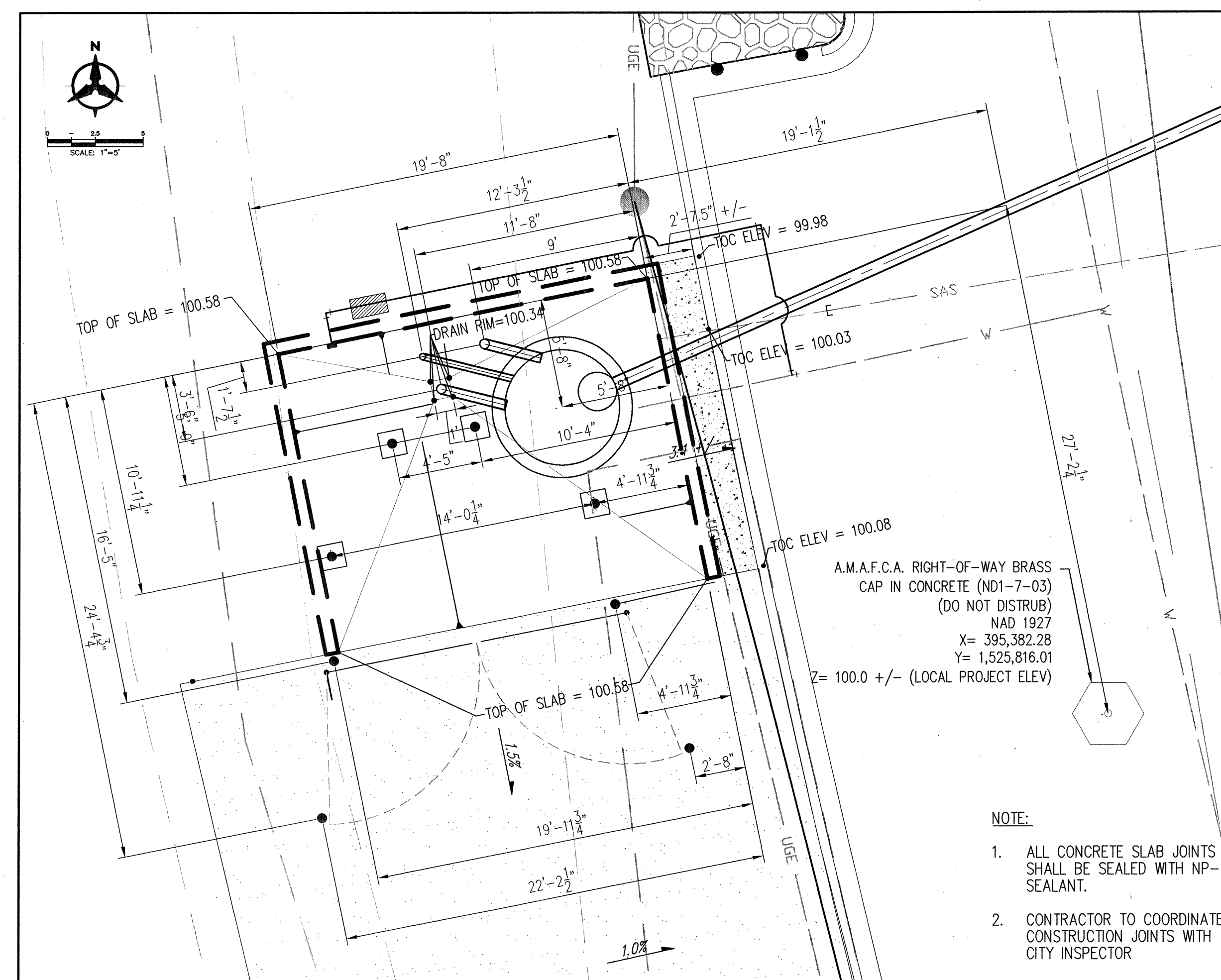
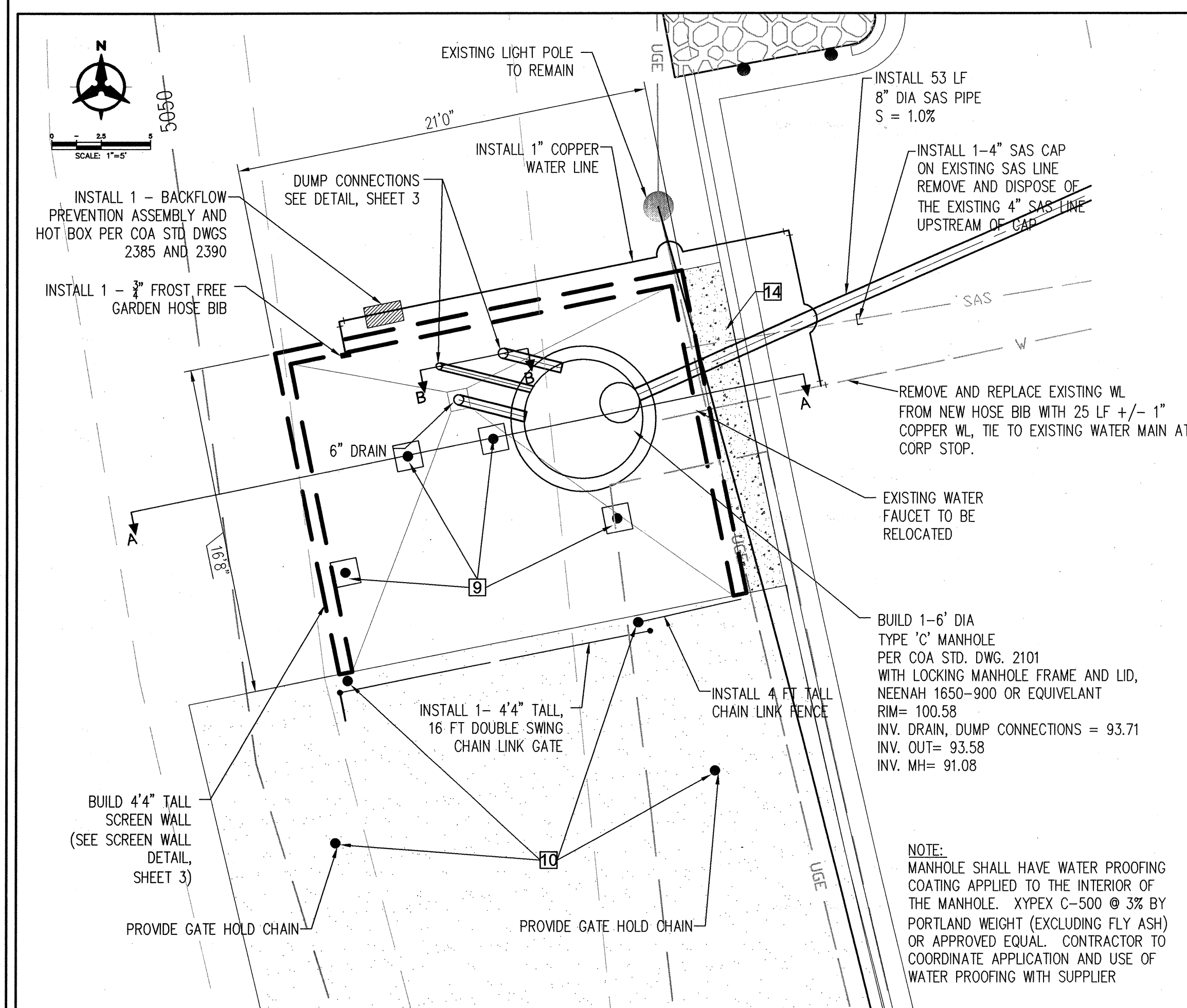
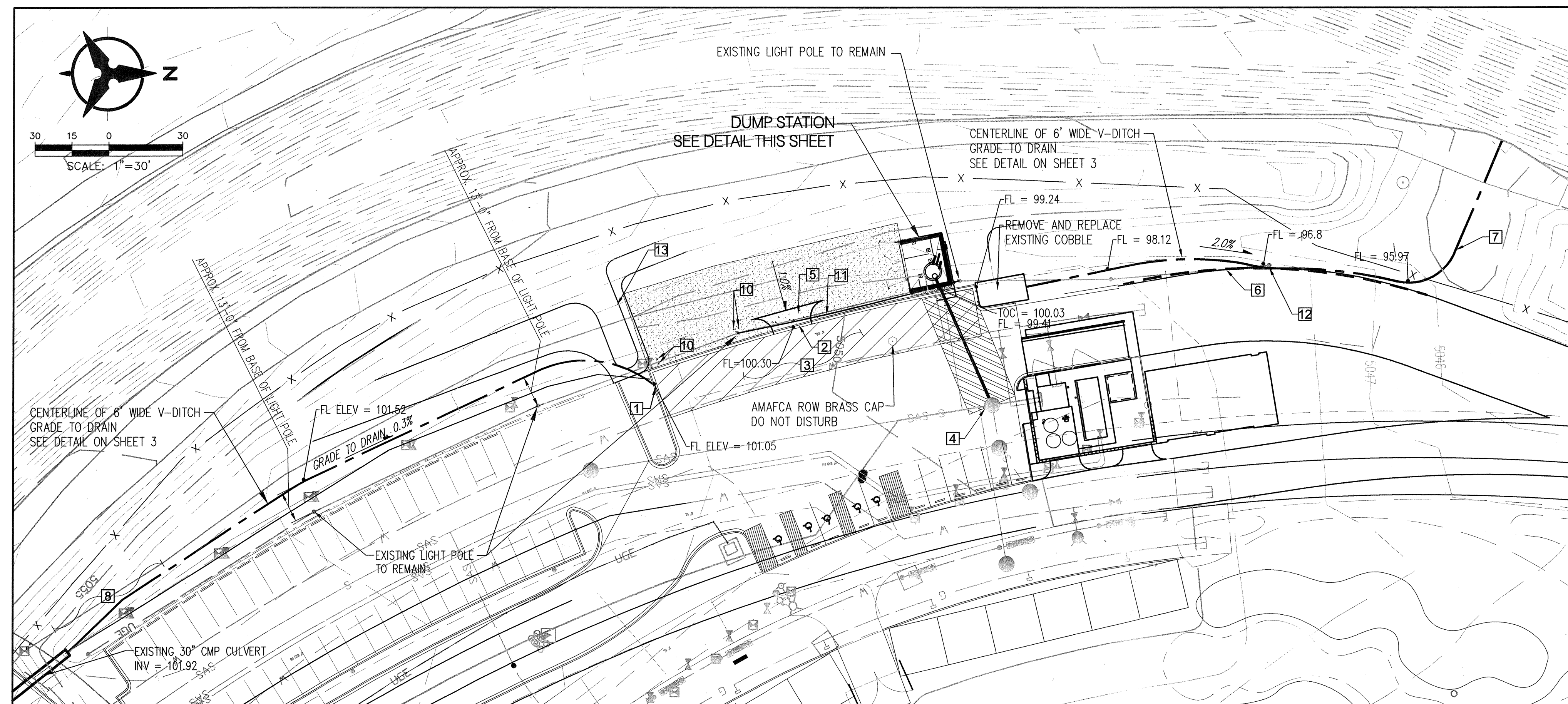
THE FOLLOWING NOTES ALSO APPLY WHEN CHECKED

- ☒ ALL UTILITIES AND UTILITY SERVICE LINES SHALL BE INSTALLED PRIOR TO PAVING.
- ☒ BACKFILL COMPACTION SHALL BE ACCORDING TO SPECIFIED STREET USE.
- ☒ TACK COAT REQUIREMENTS SHALL BE DETERMINED BY THE ENGINEER.
- ☒ SIDEWALKS AND WHEELCHAIR RAMPS WITHIN THE CURB RETURNS SHALL BE CONSTRUCTED WHEREVER A NEW CURB RETURN IS CONSTRUCTED.
- ☒ IF CURB IS DEPRESSED FOR A DRIVEPAD, THE DRIVEPAD SHALL BE CONSTRUCTED PRIOR TO ACCEPTANCE OF CURB AND GUTTER.
- ☒ ALL STORM DRAINAGE FACILITIES SHALL BE COMPLETED PRIOR TO FINAL ACCEPTANCE.
- ☒ THE REQUESTOR OR DEVELOPER SHALL BE RESPONSIBLE FOR REPAIR OR REPLACEMENT OF ALL CURB AND GUTTER OR SIDEWALK DAMAGED AFTER APPROVAL BY THE CITY ENGINEER OF WORK COMPLETED BY THE CONTRACTOR.


--	--	--	--	--	--	--	--	--	--	--	--	--	--	--	--	--	--	--	--	--	--	--	--	--	--	--	--	--	--	--	--	--	--	--	--	--	--	--	--	--	--	--	--	--	--	--	--	--	--	--	--	--	--	--	--	--	--	--	--	--	--	--	--	--	--	--	--	--	--	--	--	--	--	--	--	--	--	--	--	--	--	--	--	--	--	--	--	--	--	--	--	--	--	--	--	--	--	--	--	--	--	--	--	--	--	--	--	--	--	--	--	--	--	--	--	--	--	--	--	--	--	--	--	--	--	--	--	--	--	--	--	--	--	--	--	--	--	--	--	--	--	--	--	--	--	--	--	--	--	--	--	--	--	--	--	--	--	--	--	--	--	--	--	--	--	--	--	--	--	--	--	--	--	--	--	--	--	--	--	--	--	--	--	--	--	--	--	--	--	--	--	--	--	--	--	--	--	--	--	--	--	--	--	--	--	--	--	--	--	--	--	--	--	--	--	--	--	--	--	--	--	--	--	--	--	--	--	--	--	--	--	--	--	--	--	--	--	--	--	--	--	--	--	--	--	--	--	--	--	--	--	--	--	--	--	--	--	--	--	--	--	--	--	--	--	--	--	--	--	--	--	--	--	--	--	--	--	--	--	--	--	--	--	--	--	--	--	--	--	--	--	--	--	--	--	--	--	--	--	--	--	--	--	--	--	--	--	--	--	--	--	--	--	--	--	--	--	--	--	--	--	--	--	--	--	--	--	--	--	--	--	--	--	--	--	--	--	--	--	--	--	--	--	--	--	--	--	--	--	--	--	--	--	--	--	--	--	--	--	--	--	--	--	--	--	--	--	--	--	--	--	--	--	--	--	--	--	--	--	--	--	--	--	--	--	--	--	--	--	--	--	--	--	--	--	--	--	--	--	--	--	--	--	--	--	--	--	--	--	--	--	--	--	--	--	--	--	--	--	--	--	--	--	--	--	--	--	--	--	--	--	--	--	--	--	--	--	--	--	--	--	--	--	--	--	--	--	--	--	--	--	--	--	--	--	--	--	--	--	--	--	--	--	--	--	--	--	--	--	--	--	--	--	--	--	--	--	--	--	--	--	--	--	--	--	--	--	--	--	--	--	--	--	--	--	--	--	--	--	--	--	--	--	--	--	--	--	--	--	--	--	--	--	--	--	--	--	--	--	--	--	--	--	--	--	--	--	--	--	--	--	--	--	--	--	--	--	--	--	--	--	--	--	--	--	--	--	--	--	--	--	--	--	--	--	--	--	--	--	--	--	--	--	--	--	--	--	--	--	--	--	--	--	--	--	--	--	--	--	--	--	--	--	--	--	--	--	--	--	--	--	--	--	--	--	--	--	--	--	--	--	--	--	--	--	--	--	--	--	--	--	--	--	--	--	--	--	--	--	--	--	--	--	--	--	--	--	--	--	--	--	--	--	--	--	--	--	--	--	--	--	--	--	--	--	--	--	--	--	--	--	--	--	--	--	--	--	--	--	--	--	--	--	--	--	--	--	--	--	--	--	--	--	--	--	--	--	--	--	--	--	--	--	--	--	--	--	--	--	--	--	--	--	--	--	--	--	--	--	--	--	--	--	--	--	--	--	--	--	--	--	--	--	--	--	--	--	--	--	--	--	--	--	--	--	--	--	--	--	--	--	--	--	--	--	--	--	--	--	--	--	--	--	--	--	--	--	--	--	--	--	--	--	--	--	--	--	--	--	--	--	--	--	--	--	--	--	--	--	--	--	--	--	--	--	--	--	--	--	--	--	--	--	--	--	--	--	--	--	--	--	--	--	--	--	--	--	--	--	--	--	--	--	--	--	--	--	--	--	--	--	--	--	--	--	--	--	--	--	--	--	--	--	--	--	--	--	--	--	--	--	--	--	--	--	--	--	--	--	--	--	--	--	--	--	--	--	--	--	--	--	--	--	--	--	--	--	--	--	--	--	--	--	--	--	--	--	--	--	--	--	--	--	--	--	--	--	--	--	--	--	--	--	--	--	--	--	--	--	--	--	--	--	--	--	--	--	--	--	--	--	--	--	--	--	--	--	--	--	--	--	--	--	--	--	--	--	--	--	--	--	--	--	--	--	--	--	--	--	--	--	--	--	--	--	--	--	--	--	--	--	--	--	--	--	--	--	--	--	--	--	--	--	--	--	--	--	--	--	--	--	--	--	--	--	--	--	--	--	--	--	--	--	--	--	--	--	--	--	--	--	--	--	--	--	--	--	--	--	--	--	--	--	--	--	--	--	--	--	--	--	--	--	--	--	--	--	--	--	--	--	--	--	--	--	--	--	--	--	--	--	--	--	--	--	--	--	--	--	--	--	--	--	--	--	--	--	--	--	--	--	--	--	--	--	--	--	--	--	--	--	--	--	--	--	--	--	--	--	--	--	--	--	--	--	--	--	--	--	--	--	--	--	--	--	--	--	--	--	--	--	--	--	--	--	--	--	--	--	--	--	--	--	--	--	--	--	--	--	--	--	--	--	--	--	--	--	--	--	--	--	--	--	--	--	--	--	--	--	--	--	--	--	--	--	--	--	--	--	--	--	--	--	--	--	--	--	--	--	--	--	--	--	--	--	--	--	--	--	--	--	--	--	--	--	--	--	--	--	--	--	--	--	--	--	--	--	--	--	--	--	--	--	--	--	--	--	--	--	--	--	--	--	--	--	--	--	--	--	--	--	--	--	--	--	--	--	--	--	--	--	--	--	--	--	--	--	--	--	--	--	--	--	--	--	--	--	--	--	--	--	--	--	--	--	--	--	--	--	--	--	--	--	--	--	--	--	--	--	--	--	--	--	--	--	--	--	--	--	--	--	--	--	--	--	--	--	--	--	--	--	--	--	--	--	--	--	--	--	--	--	--	--	--	--	--	--	--	--	--	--	--	--	--	--	--	--	--	--	--	--	--	--	--	--	--	--	--	--	--	--	--	--	--	--	--	--	--	--	--	--	--	--	--	--	--	--	--	--	--	--	--	--	--	--	--	--	--	--	--	--	--	--	--	--	--	--	--	--	--	--	--	--	--	--	--	--	--	--	--	--	--	--	--	--	--	--	--	--	--	--	--	--	--	--	--	--	--	--	--	--	--	--	--	--	--	--	--

DMD 2008-1 ONCALL


Bohannon **Huston**
ENGINEERING SPATIAL DATA ADVANCED TECHNOLOGIES



LEGEND



4" ASPHALT MILLINGS WITH
SLURRY COATING

 SAW CUT, REMOVE AND REPLACE ASPHALT, MATCH EXISTING.

 NEW PARKING LOT STRIPE WITH "NO PARKING ZONE", SEE NOTE 2, THIS SHEET

GENERAL NOTES:

1. CONTRACTOR SHALL COORDINATE UTILITY LINE SPOTTING AND STAKE PROPOSED DRAINAGE ALIGNMENT FOR AMAFCA AND COA PARK MANAGEMENT REVIEW. THESE ALIGNMENTS MUST BE APPROVED PRIOR TO EXCAVATION ACTIVITY.
2. TOPOGRAPHIC MAPPING CONTOURS ARE ACTUAL ELEVATIONS, ACCURACY IS APPROXIMATELY 6" +/- . SPOT ELEVATIONS ARE BASED ON SITE SPECIFIC SURVEY AND ARE RELATIVE. THESE ELEVATIONS ARE RELATIVE TO THE ELEVATION OF THE EXISTING AMAFCA ROW MONUMENT NOI-7-03R. THIS MONUMENT WAS ASSIGNED A PROJECT SPECIFIC ELEVATION OF 100.00 FT +/-.

KEYED NOTES:

- 1 SAW CUT AND GRIND 6 LF OF EXISTING CURB STONE TO PROVIDE FLUSH TRANSITION BETWEEN COBBLE SWALE AND EXISTING FLOW LINE.
- 2 SAW CUT AND GRIND 18 +/- LF EXISTING CURB TO BE FLUSH WITH FLOW LINE.
- 3 STRIPE OVER THE EXISTING PARKING STALLS WITH BLACK PAINT. INSTALL "NO PARKING ZONE" SURFACE LETTERING AND STRIPES PER MUTCD STANDARDS.
- 4 THE NEW 8" SAS LINE TO EXISTING MANHOLE PER DROP CONNECTION STD. DWG 2116. CHIP AND RE-FORM INVERT FLOWLINE.
EXISTING MANHOLE DATA:
RIM = 99.87 +/-
INV = 85.89 +/-
INV (NEW 8" SAS) = 93.05 +/- (PRIOR TO DROP)
- 5 INSTALL NEW CONCRETE DRIVE PAD PER COA STD. DWG 2425
- 6 SAW CUT EXISTING EDGE OF ASPHALT AND INSTALL APPROXIMATELY 125 LF OF CONCRETE HEADER CURB PER COA STD DETAIL 2415B. TOP OF CONCRETE SHALL BE FLUSH WITH ASPHALT.
- 7 COBBLE SWALE SHALL TIE WITH EXISTING RUNDOWN. WIDTH OF COBBLE SWALE SHALL EXTEND 4' BEYOND RUNDOWN INVERT EACH SIDE. GRADE TO DRAIN. COORDINATE ACCESS WITH AMAFCA.
- 8 STABILIZE MODIFIED SOIL WITH HAND PLACED COBBLE CLADDING OVER FABRIC.
- 9 CONCRETE SLAB BOLLARD, SEE DETAIL SHEET 3
- 10 STATIONARY BOLLARD PER COA STD DWG 2250
- 11 REMOVE AND REPLACE STREET LIGHTING CONDUIT AND WIRE, IN KIND. CONTRACTOR TO VERIFY WIRE GAUGE AND REPLACE WITH EQUIVALENT.
- 12 BUILD 3.5' WIDE CONCRETE VALLEY GUTTER, EXTEND 4' EACH SIDE OF EXISTING LIGHT POLE PER COA STD DWG 2420. EDGE OF GUTTER SHALL BE FLUSH WITH NEW CUT OFF WALL / EXISTING ASPHALT. GRADE TO DRAIN
- 13 1' HIGH DRAINAGE DIVERSION BERM WITH 4:1 SIDE SLOPES. COVER WITH MILLINGS TO STABILIZE.
- 14 4" THICK SLOPE BLANKET. REINFORCED WITH WIRE MESH, 2" CLR

APPROVED AS RECORD DRAWINGS
DMD/CSD
CITY CONSTRUCTION ENGINEER
DATE: _____

Bohannon Huston INC.

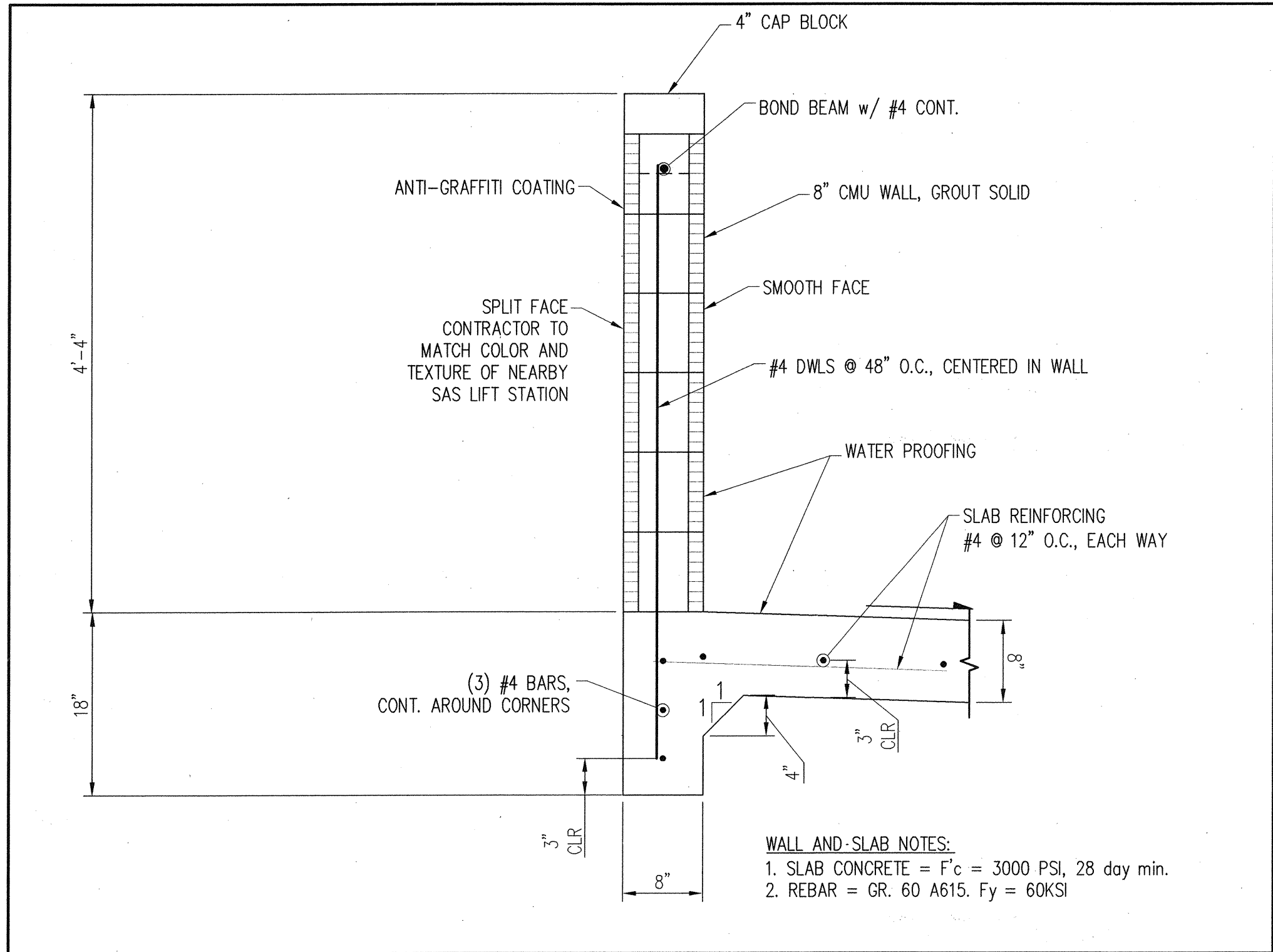
ENGINEERING ▲ SPATIAL DATA ▲ ADVANCED TECHNOLOGIES



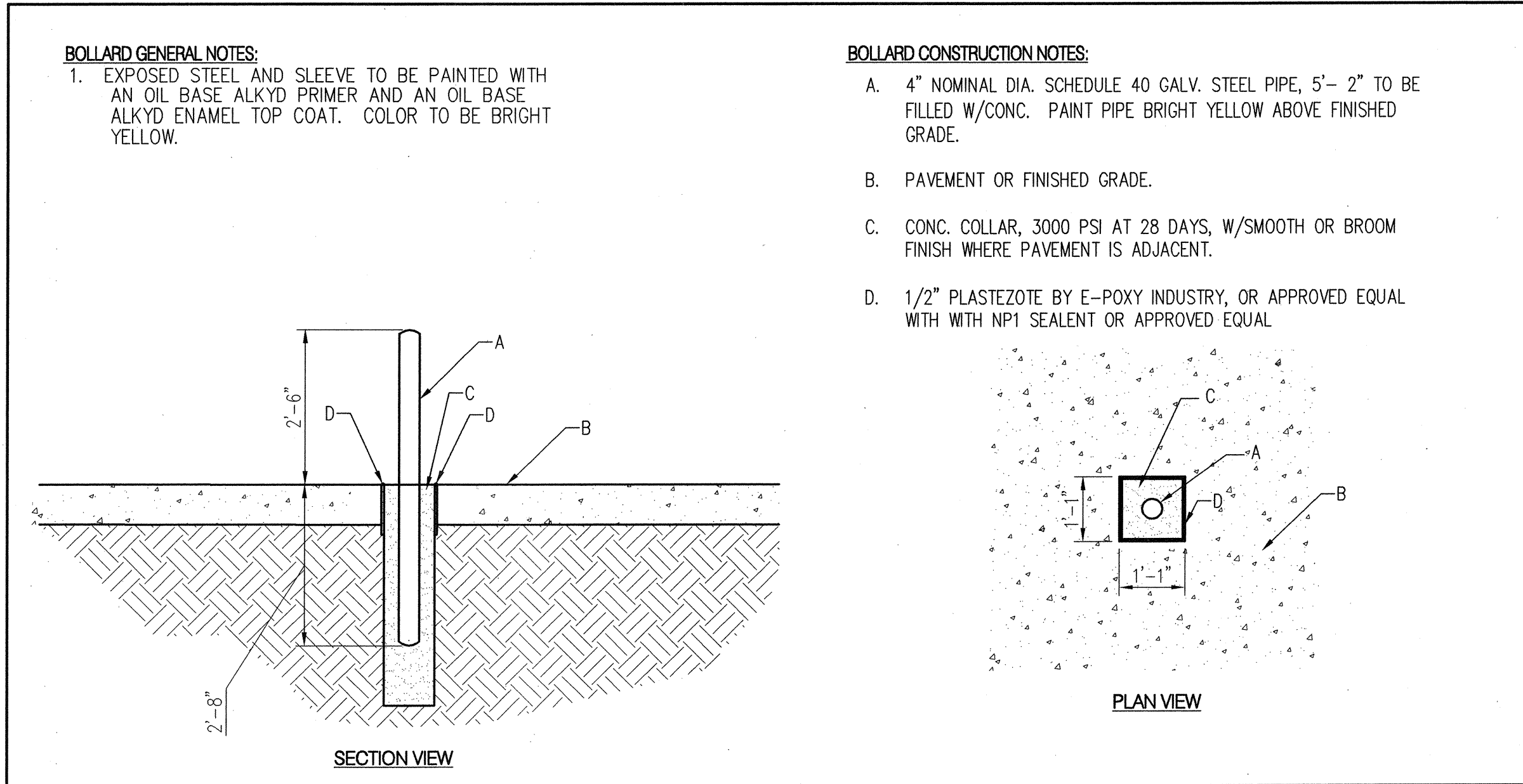
CITY OF ALBUQUERQUE
DEPARTMENT OF
MUNICIPAL DEVELOPMENT

BALLOON FIESTA PARK
SANITARY SEWER
DUMP STATION

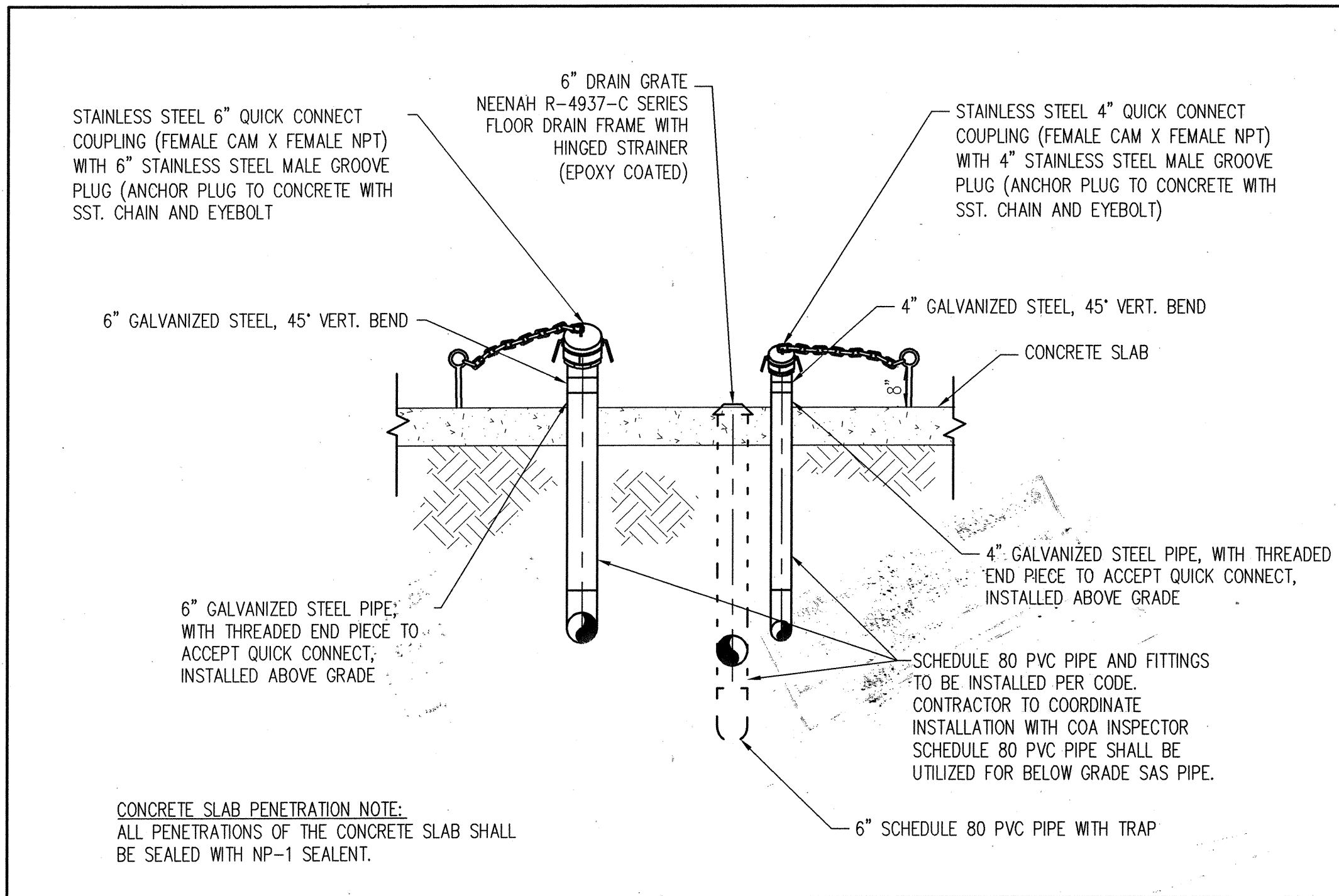
DUMP STATION			
DESIGN REVIEW COMMITTEE	CITY ENGINEER APPROVAL	LAST DESIGN UPDATE	MO./DAY/YR.
CITY PROJECT NO.	ZONE MAP NO.	SHEET	OF
766618	B-17-Z	2	3



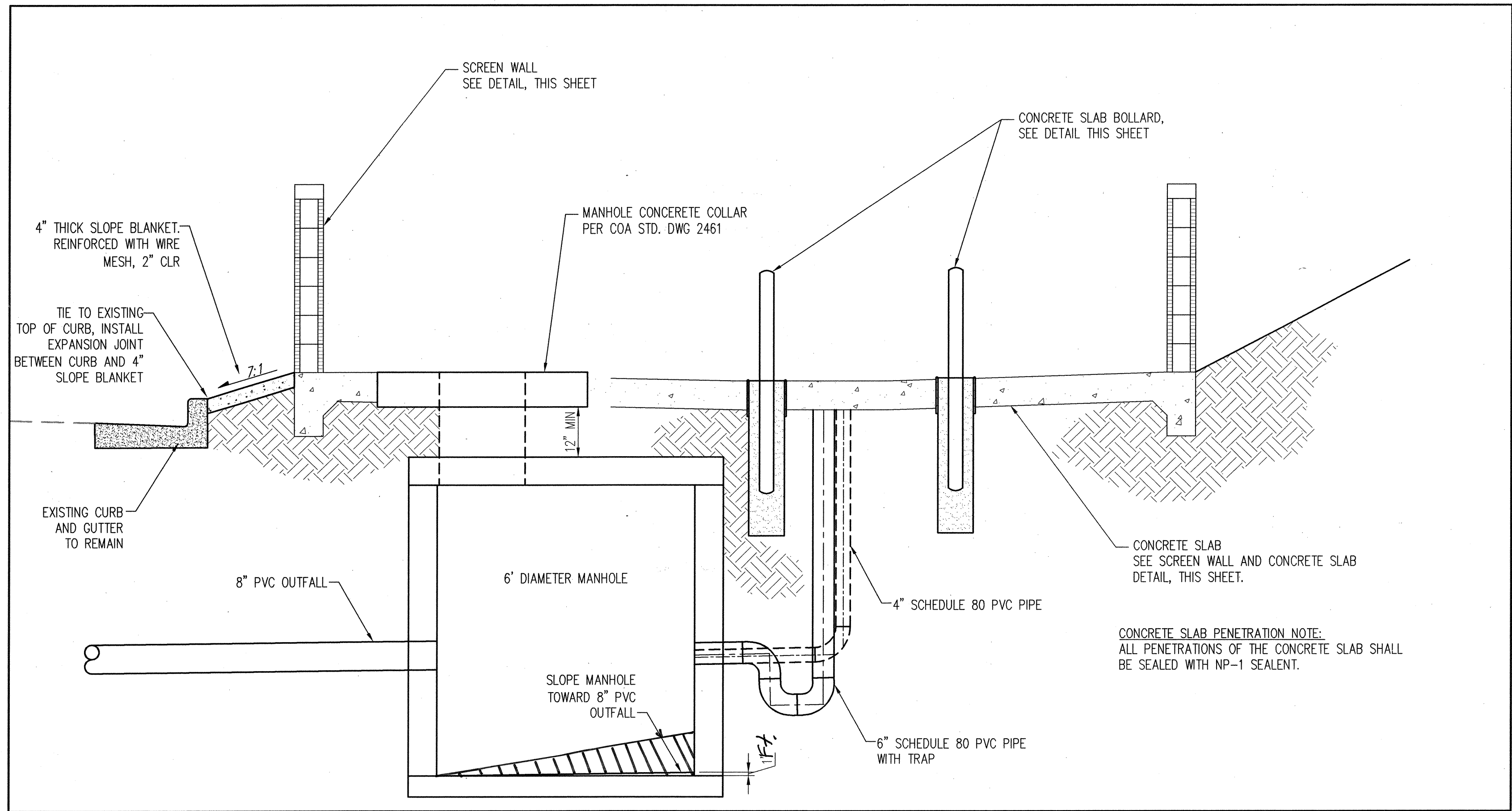
SCREEN WALL AND SLAB DETAIL
1"=2"



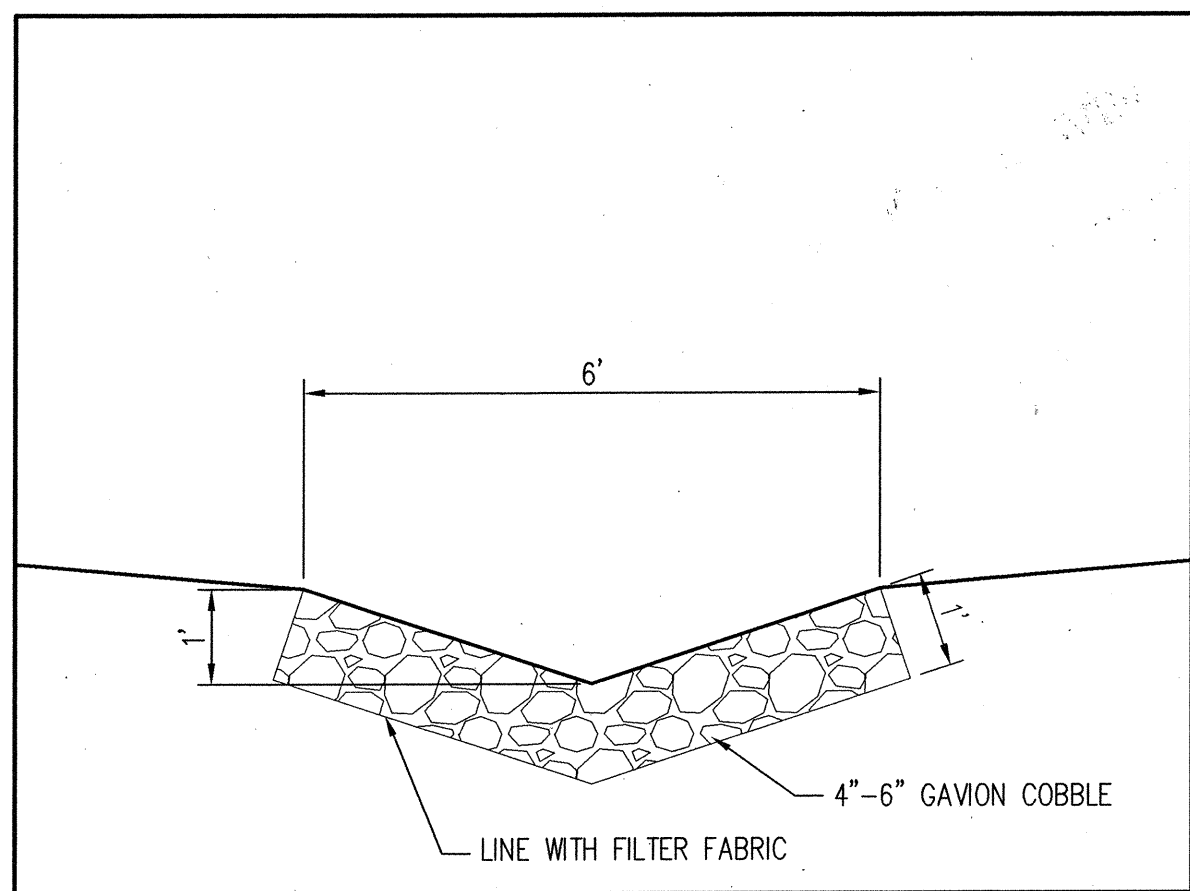
CONCRETE SLAB BOLLARD DETAIL
1"=2"



SECTION B-B
DUMP CONNECTION DETAIL
NTS



SECTION A-A
1"=2"



TYPICAL 6' V-DITCH
1"=2"

- WATER PROOFING NOTE:**
1. WATER PROOFING SHALL BE APPLIED TO OR ADDED TO THE CONCRETE MIX USED FOR THE CONCRETE SLAB AND MANHOLE COLLAR. XYPEX C-500 @ 2% BY PORTLAND WEIGHT (EXCLUDING FLY ASH) OR APPROVED EQUAL. CONTRACTOR TO COORDINATE APPLICATION AND USE OF WATER PROOFING WITH MANUFACTURE.
2. WATER PROOFING SHALL BE APPLIED PER MANUFACTURE SPECIFICATIONS TO CMU WALL. XYPEX C-500 @ 2% BY PORTLAND WEIGHT (EXCLUDING FLY ASH) OR APPROVED EQUAL.
3. ALL PENETRATIONS AND CONSTRUCTION JOINTS OF THE CONCRETE SLAB SHALL BE SEALED WITH NP-1 SEALANT, OR APPROVED EQUAL.

AS-BUILT INFORMATION		BENCH MARKS		SURVEY INFORMATION		ENGINEER'S SEAL		REVISIONS		DESIGN		CITY PROJECT NO.		ZONE MAP NO.		SHEET		OF	
CONTRACTOR	DATE	SPKED BY	DATE	NO.	BY	DATE	NO.	DATE	NO.	DATE	NO.	DATE	NO.	DATE	NO.	DATE	NO.	DATE	NO.
<p>RECORD DRAWINGS</p> <p>Bohannon & Huston ENGINEERING • SPATIAL DATA • ADVANCED TECHNOLOGIES</p> <p>CITY OF ALBUQUERQUE DEPARTMENT OF MUNICIPAL DEVELOPMENT</p> <p>BALLOON FIESTA PARK SANITARY SEWER DUMP STATION DETAILS</p> <p>DESIGNED BY K.W.J. DATE 09/2008 DRAWN BY N.M.P. DATE 09/2008 CHECKED BY S.B. DATE 09/2008</p> <p>DESIGN REVIEW COMMITTEE CITY ENGINEER APPROVAL</p> <p>LAST DESIGN UPDATE</p> <p>QTY PROJECT NO. 766618 ZONE MAP NO. B-17-Z SHEET 3 OF 3</p>																			