

1	2	3	4	5	6	7	8	9	10	11	12	13	14	15
2	6	-	7	6	7	2	.	8	1	-	0	7		

UTILITY COMPANY CONTACTS

BUSINESS	PHONE/E-MAIL	PERSON
Albuquerque Bernalillo County Water Utility Authority One Civic Plaza NW, Rm. 5072 Albuquerque, NM 87102	Office phone: (505)768-2799 Office fax: (505)768-3629	Nancy Muzinski Senior Utility Engineer
AT&T 111 3rd Street NW Alb., NM 87103	Office phone: (505)842-2911 Office fax: (505)842-2890 dcrowel@att.com	David Crowell Resource Supervisor
Comcast 4611 Montbel NE Alb., NM 87107	Office phone: (505)761-6235 Office fax: (505)761-0599 rita_ericsson@cable.comcast.com	Rita Erickson Planning and Design Supervisor
E.Spire 505 Marquette NW, Suite 1605 Alb., NM 87102	Office phone: (505)998-2274 Office fax: (505)998-9161 john.mares@espire.net	John Mares
Genuity 5221 N. O'Connor MC:HQ1L1A22 Irving, TX 75039	Office phone: (972)791-3277 Office fax: (972)791-3178 Cell phone: (214)912-3412 dennis.paulsen@genuity.com	Dennis Paulsen OSP Engineering
MCI Worldcom 3700 Singer NE, Suite A Alb., NM 87109	Office phone: (505)346-4476 Office fax: (505)346-4481 andy.darnell@wcom.com	Andy Darnell Operations Manager
McLeodUSA 505 Marquette NW, Suite 1600 Alb., NM 87102	Office phone: (505)244-3161 Office fax: (505)244-0094 Cell Phone: (505)228-3329	Rick Mueller Supervisor of Outside Techs.
PNM-Electric 4201 Edith NE Alb., NM 87107	Office phone: (505)241-3490 Office fax: (505)241-3620 Cell phone: (505)934-8818 warthur@pnm.com	Warren Arthur Engineering Representative III
PNM-Gas 4625 Edith NE Alb., NM 87107	Office phone: (505)241-7752 Office fax: (505)241-7753 Pager: (505)790-5575 kbouska@pnm.com	Kelly Bouska District Engineer
Qwest 210 3rd Street NW, Suite 700 Alb., NM 87102	Office phone: (505)245-8706 Office fax: (505)245-6831 dmuller@uswest.com	David Muller Capacity Provisioning Specialist
Time-Warner Telecom 3830 Singer NE, Suite 1000 Alb., NM 87109	Office phone: (505)938-7339 Office fax: (505)938-7380 Royal.Harrison@twtlwcom.com	Royal Harrison Plant Manager

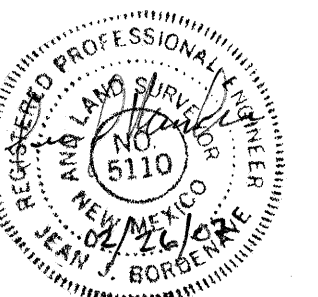
1. All work detailed on these plans to be performed under this contract, except as otherwise stated or provided for herein, be constructed in accordance with the details and specifications of "City of Albuquerque Standard Specifications for Public Works Construction, 1986 Edition" as amended through update No. 7.
2. An Excavation Permit and Grading and Paving Permit will be required before beginning any work within City right-of-way.
3. Five (5) working days prior to beginning construction, the Contractor shall submit to Construction Coordination Division a detailed Construction Schedule. Two (2) days prior to the start of construction, the Contractor shall obtain a Barricading Permit from the Construction Coordination Division. The Contractor shall notify the Construction Coordination Engineer (924-3400) prior to occupying an intersection. Refer to Section 19 of the General Conditions of the Standard Specifications.
4. Two working days prior to any excavation, the Contractor shall contact the New Mexico One Call System, 260-1990, for location of existing lines.
5. All street striping altered or destroyed shall be replaced with retro reflectorized pavement markings by the Contractor. Striping shall be placed in the pre-construction location or as indicated by this plan set.
6. Prior to construction, the Contractor shall excavate and verify the horizontal and vertical location of all obstructions including existing utilities. Should a conflict exist, the Contractor shall notify the Engineer or Surveyor so that the conflict can be resolved with a minimum amount of delay.
7. Contractor shall coordinate with Water Systems Division (857-8200) seven working days in advance of any work that may affect existing public water or sewer utilities. Existing valves to be operated by city personnel only. Contractor shall contact the Water Systems Division seven working days prior to needing valves turned on or off. Refer to Section 18 of Standard Specifications.
8. All water lines are to be PVC C900 and all sanitary sewer lines to be PVC SDR35 pipe.
9. The Contractor will not be allowed to use Class IV or V soils for embedment of flexible pipe. The Contractor will not be allowed to deflect joints in flexible pipe. Any deflections required to meet horizontal or vertical alignment will be achieved between joints.
10. Back fill compaction requirements shall be according to residential street use.
11. The Contractor shall assume responsibility for any damage to existing pavement, pavement markings, curb and gutter, driveways, wheel chair ramps and sidewalk during construction, apart from those sections indicated for removal on the plans; and shall repair or replace damaged items per City of Albuquerque standards at the Contractor's own expense.
12. Contractor shall record data on all utility lines and accessories as required by the City of Albuquerque for the preparation of "As Constructed" drawings. Contractor shall not cover utility lines and accessories until all data has been recorded.
13. All existing signs, markers, delineators, etc., within the construction limits shall be removed, stored and reset by the Contractor.
14. The Contractor shall notify the Engineer not less than seven (7) days prior to starting work in order that the Engineer may take necessary measures to insure the preservation of survey monuments. Contractor shall not disturb permanent survey monuments without the consent of the Engineer and shall notify the Engineer and bear the expense of replacing any that may be disturbed without permission. Replacement shall be done only by the City Surveyor. When a change is made in the finished elevations of pavement of any roadway in which a permanent survey monument is located, the Contractor shall, at his own expense, adjust the monument cover to the new grade unless otherwise specified. Refer to Section 4.4 of the General Conditions of the Standard Specifications.

The map displays the University Heights neighborhood, characterized by its dense residential layout and grid system. Major streets shown include Madison, Hamilton, and University. Key features include:

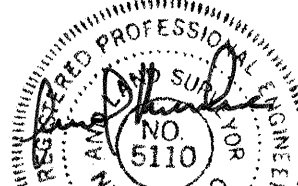
- UNM NORTH CAMPUS:** Located in the lower-left quadrant, featuring large institutional buildings and parking areas.
- UNIVERSITY GOLF COURSE:** Situated to the west of the campus, with a winding path and open green spaces.
- SCHOOLS:** Mountain School is located in the upper-left, while Montezuma Elementary School is in the upper-right. Other smaller schools like Sunbelt and Terra-C are also marked.
- PROJECT AREA:** A large, bold 'PROJECT' label with an arrow pointing to a specific block on Madison Street, between Hamilton and University.
- STREET GRID:** The map shows a complex network of streets, including Madison, Hamilton, University, and numerous residential streets like Sunbelt, Terra-C, and various 'ADDITION' streets.
- LOT NUMBERS:** Individual lots are numbered throughout the residential blocks.
- LANDMARKS:** Other notable features include the 'UNIVERSITY' building, 'MADISON' street, and various commercial and residential structures.

SHEET NO.	SHEET DESCRIPTION
1	COVER SHEET
2	PAVING PLAN AND PROFILE

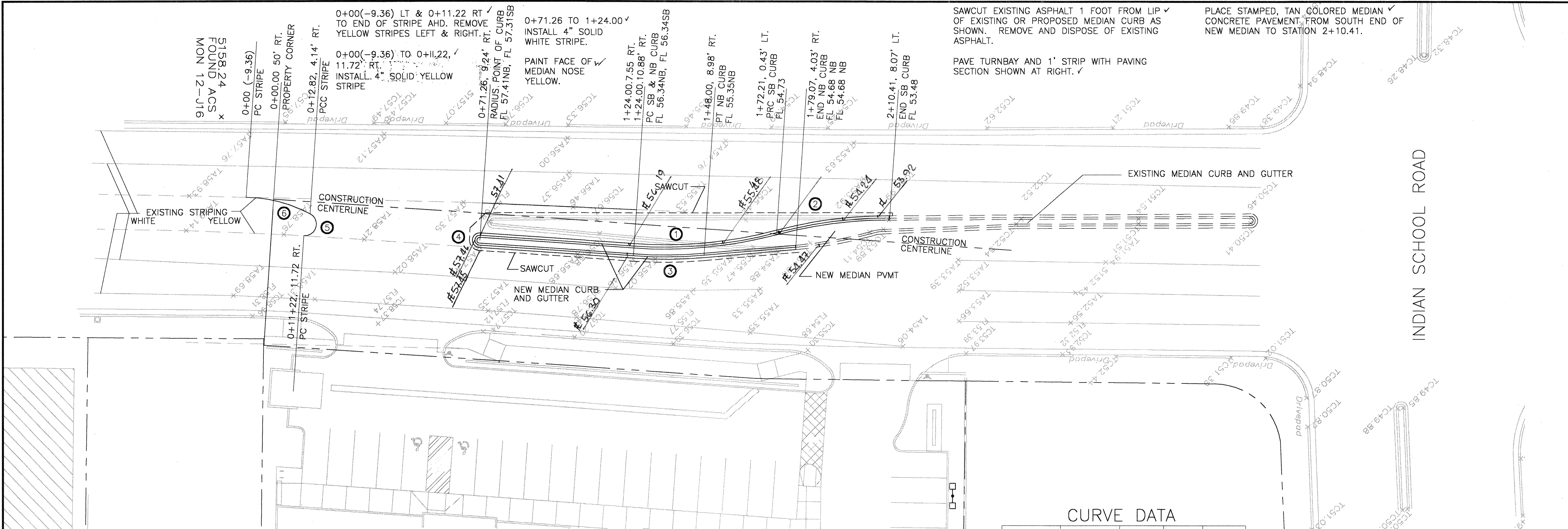
I, Jean J. Bordenave, of the firm of Bordenave designs, a Registered Professional Engineer in the State of New Mexico, do hereby certify, to The best of my knowledge and belief, that the infrastructure installed as part of this project has been inspected by me or by a qualified person under my direct supervision and has been constructed in accordance with the plans and specifications approved by the City Engineer and that the original design intent of the approved plans has been met, except as noted by on the as-built construction drawings. This Certification is based on site inspections by me or personnel under my direct supervision and survey information provided by BASILINE FIELD SERVICES INC., NMPS number SI10.



B **BORDENAVE DESIGNS**
P.O. BOX 91194, ALBUQUERQUE, NM 87199
(505) 823-1344 FAX (505) 821-9105

REV.	SHEETS	CITY ENGR.	DATE	USER DEPT.	DATE	USER DEPT.	DATE
		APPROVAL	ENGINEER	DATE		APPROVED FOR CONSTRUCTION	
		DRC CHAIRMAN	<i>John Baker</i>	5-18-06			
		WATER/WASTEWATER	<i>William J. Baker</i>	4/25/06			
		TRANS. DEV.	<i>WJ</i>	4/26/06			
		HYDROLOGY	<i>WJ</i>	4/25/06			
		CONSTR. MNGMT.				<i>John Baker</i>	6-29-06
		CONSTR. COORD.				CITY ENGINEER	DATE
CITY PROJECT NO. 767281					SHEET OF 1 2		

SCANNED BY
PLANNING



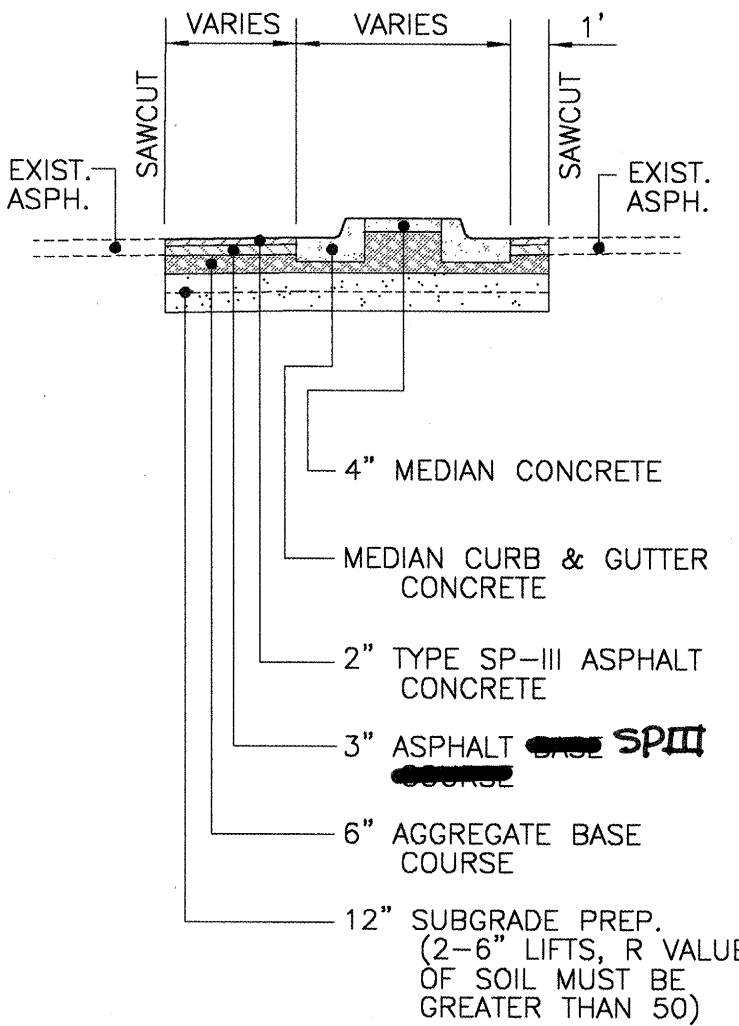
NOTE: STRIPE ERADICATION SHALL BE ACCOMPLISHED BY WATER BLASTING OR SURFACE PLANING OF THE ROADWAY TO A MAXIMUM DEPTH OF 0.25 INCHES AND TO A MAXIMUM WIDTH EQUAL TO TWO TIMES THE WIDTH OF THE STRIPE OR OBJECT TO BE REMOVED.

CURVE DATA				
CURVE NO.	DELTA	RADIUS	ARC	CHORD
1	18°45'16"	150.00'	49.10'	48.88'
2	14°55'15"	150.00'	39.06'	38.79'
3	09°00'28"	153.33'	24.10'	24.08'
4	180°00'00"	1.67'	4.36'	3.33'
5	26°04'52"	50.00'	22.76'	22.56'
6	156°22'58"	4.00'	10.92'	7.83'

SCALE: 1" = 20' HORIZONTAL
1" = 5' VERTICAL

GENERAL NOTES:

- CONSTRUCTION CENTERLINE IS OFFSET 50 FEET WEST AND PARALLEL TO THE FRONT PROPERTY LINE OF LOT 28A, BLOCK A, ALTURA ADDITION.
- STATIONING IS ALONG THE CONSTRUCTION CENTERLINE. OFFSETS ARE MEASURED PERPENDICULAR TO THE CONSTRUCTION CENTERLINE.
- ALL PAVING DIMENSIONS ARE MEASURED TO THEORETICAL FACE OF CURB UNLESS OTHERWISE STATED.
- SEE PLAN VIEW FOR SPOT ELEVATIONS. STRAIGHT LINE GRADE BETWEEN SPOT ELEVATIONS SHOWN.
- STANDARD DRAWINGS
MEDIAN C&G - 2415B
MEDIAN PVMT - 2408



CONSTRUCTION ZONE SECTION

NOTE: EXTEND SUBGRADE PREP AND AGG. BASE COURSE A MINIMUM OF ONE FOOT BEHIND THE LEFT CURB NORTH OF STATION 1+79.07 TO THE END OF CONSTRUCTION.

AS BUILT INFORMATION		BENCH MARKS		SURVEY INFORMATION		ENGINEER'S SEAL	
CONTRACTOR	TLC	ACS 2-H16	ELEVATION 5147.44	DATE	01/05		
INSPECTOR	DATE 09/06	NO.	041219	BY	041219 SURV-TEK		
VERIFICATION BY	DATE 02/04/07	NO.		REVISIONS		DESIGNED BY	DATE
CHECKED BY	DATE 02/04/07	NO.		DESIGN		DRAWN BY	DATE
RECORDED BY	NO.	NO.				CHECKED BY	DATE

CITY OF ALBUQUERQUE MUNICIPAL DEVELOPMENT DEPARTMENT ENGINEERING GROUP			
TITLE MEDIAN RECONSTRUCTION PLAN AND PROFILE CARLISLE BLVD.			
DESIGN REVIEW COMMITTEE	CITY ENGINEER APPROVAL	MO/DAY/YEAR	MO/DAY/YEAR
CITY PROJECT NO.	ZONE MAP NO.	SHEET	OF
767281	J-16	2	2