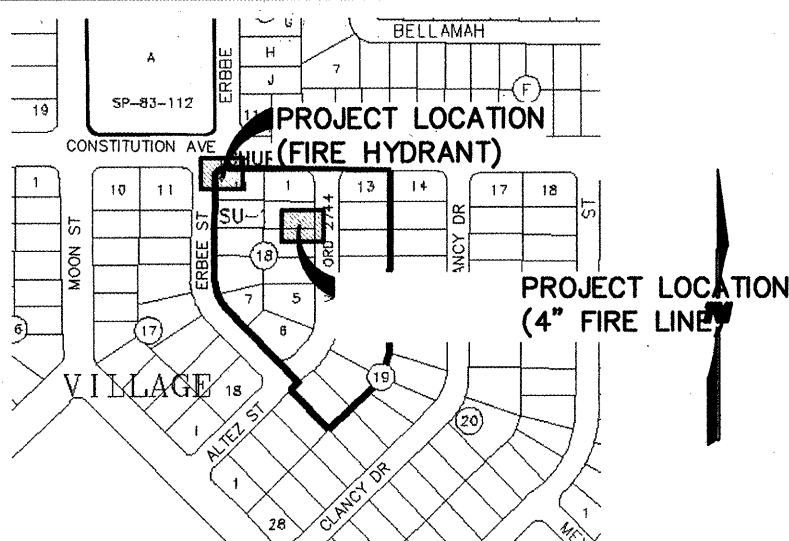


SCANNED BY
PLANNING

**CITY OF ALBUQUERQUE
PUBLIC FIRE HYDRANT INSTALLATION
AND 4" FIRE LINE INSTALLATION**



VICINITY MAP

LEGAL DESCRIPTION OF PROPERTY AND ADDRESS:

TRACT A

ST. PAUL'S UNITED METHODIST CHURCH

9500 CONSTITUTION AVENUE NE, ALBUQUERQUE, NM 87112

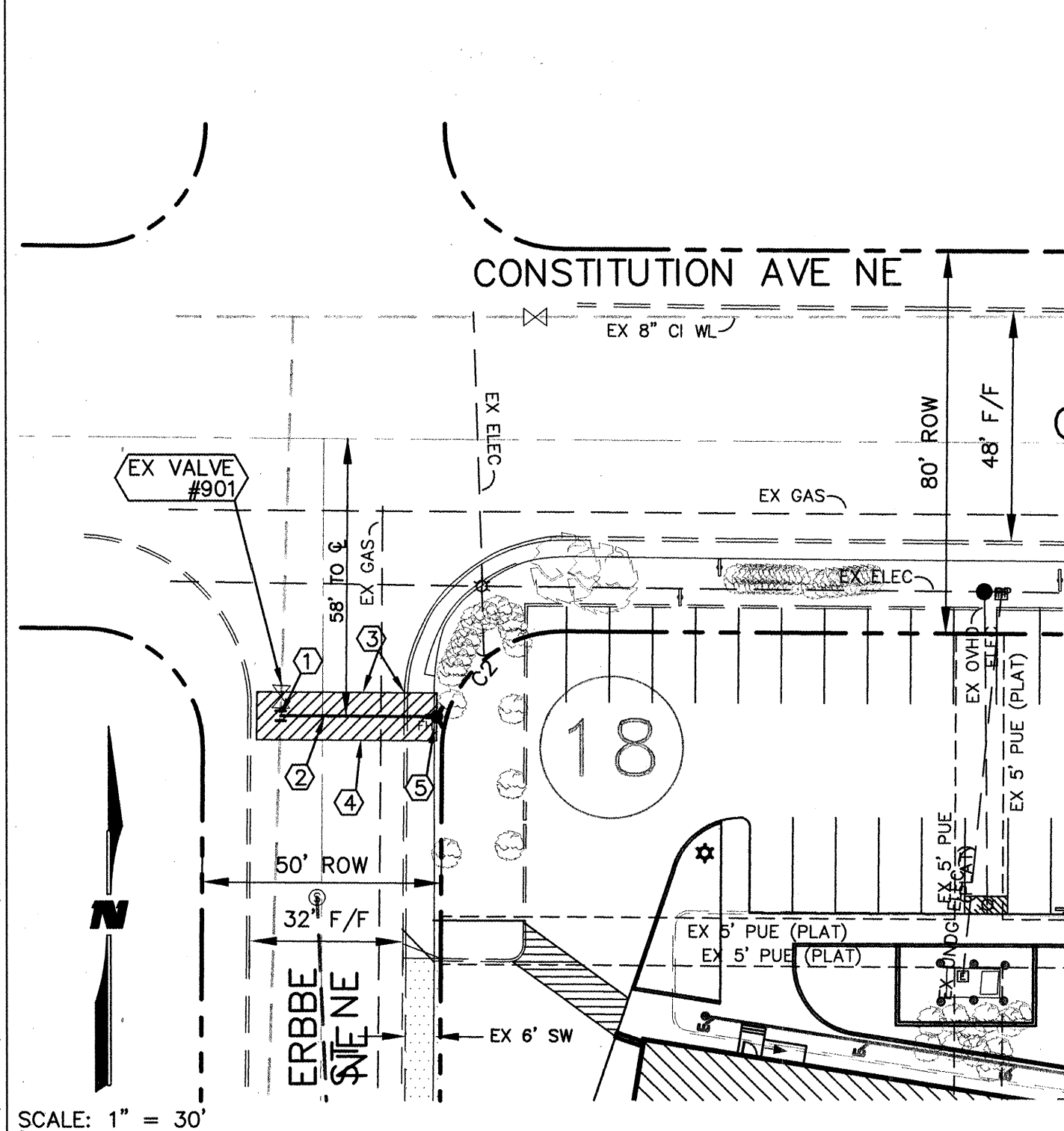
NOTICE TO CONTRACTORS

1. An excavation/barricade permit will be required before beginning any work within City, County, or Village right-of-way. An approved copy of these plans must be submitted at the time of application to these permits.
2. All work detailed on these plans to be done, except as otherwise stated or provided hereon, will be constructed in accordance with "City of Albuquerque Interim Standard Specification for Public Works Construction, 1986," latest revision.
3. Two working days prior to any excavation, the contractor must contact New Mexico one Call System, Inc., 260-1990, for location of existing utilities.
4. Prior to construction, the contractor will excavate and verify the horizontal and vertical locations of all construction. Should a conflict exist, the contractor will notify the Construction Engineer so that the conflict can be resolved with a minimum amount of delay.
5. The contractor will be responsible for coordinating the water shutoff with the water Division seven (7) working days prior to construction.
6. The contractor will be responsible for performing soil density tests as required by the City of Albuquerque.

APPROVALS FOR	NAME	DATE	TITLE OF PROJECT:
DESIGN UTILITY DEVELOPMENT	<i>William P. Pelt</i>	9/2/06	ST. PAUL'S UNITED METHODIST CHURCH
CONSTRUCTION ENGINEER	<i>James H. Hargis</i>	10/10/06	PUBLIC FIRE HYDRANT
ACCEPTANCE CONSTRUCTION INSPECTOR	<i>Mike Stiller</i>	10/15/06	PROJECT NO. 767781 SHEET 1 OF 6

hydrant1.dwg

**CITY OF ALBUQUERQUE
PUBLIC FIRE HYDRANT INSTALLATION
SITE DETAIL**



SCALE: 1" = 30'

**WILSON
& COMPANY**

2600 THE AMERICAN ROAD SE, STE 100
RIO RANCHO, NEW MEXICO 87124
(505) 898-8021

PROJECT NO. 767781 SHEET 2 OF 6	ZONE ATLAS J-20	TITLE: ST. PAUL'S UNITED METHODIST CHURCH
------------------------------------	--------------------	---

hydrant2.dwg

**CITY OF ALBUQUERQUE
PUBLIC FIRE HYDRANT INSTALLATION
SITE DETAIL**

NOTICE TO CONTRACTORS

GENERAL NOTES

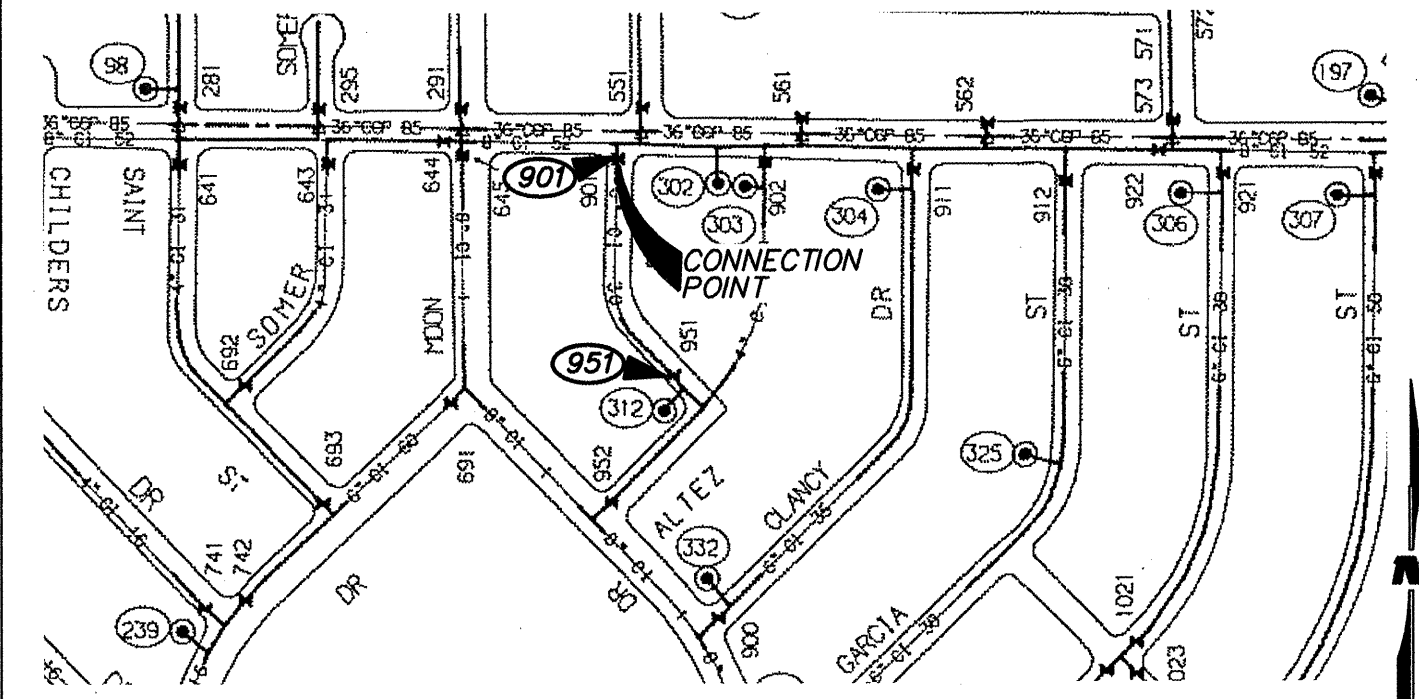
1. LIMITS OF WORK ORDER ARE WITHIN ROW.

CONSTRUCTION NOTES

- ① MAKE NON-PRESSURE CONNECTION TO EX 6" WL; INSTALL 6"x6" TEE.
- ② INSTALL 32.6 LF 6" C-900 WL WITH RESTRAINED JOINTS OR BOLTED FLANGES FROM 6" MAIN TO FH. NO CONCRETE BLOCKING WILL BE ALLOWED.
- ③ NEATLY CUT, REMOVE AND REPLACE, AS NECESSARY, EXISTING CONCRETE CURB, SIDEWALK, AND FILLET PAVING PER STD DWG 2420. CUT TO THE NEAREST EXISTING CONCRETE JOINT.
- ④ NEATLY CUT, REMOVE AND REPLACE EXISTING PAVEMENT PER STD DWG 2465.
- ⑤ INSTALL 6" FIRE HYDRANT, 4' BURY, PER STD DWG 2340-A & DETAIL SHEET 4 OF 4.

WATER SHUTOFF PLAN

SHUT OFF VALVES: 901 & 951



**WILSON
& COMPANY**

2600 THE AMERICAN ROAD SE, STE 100
RIO RANCHO, NEW MEXICO 87124
(505) 898-8021

PROJECT NO. 767781 SHEET 3 OF 6	ZONE ATLAS J-20	TITLE: ST. PAUL'S UNITED METHODIST CHURCH
------------------------------------	--------------------	---

hydrant3.dwg

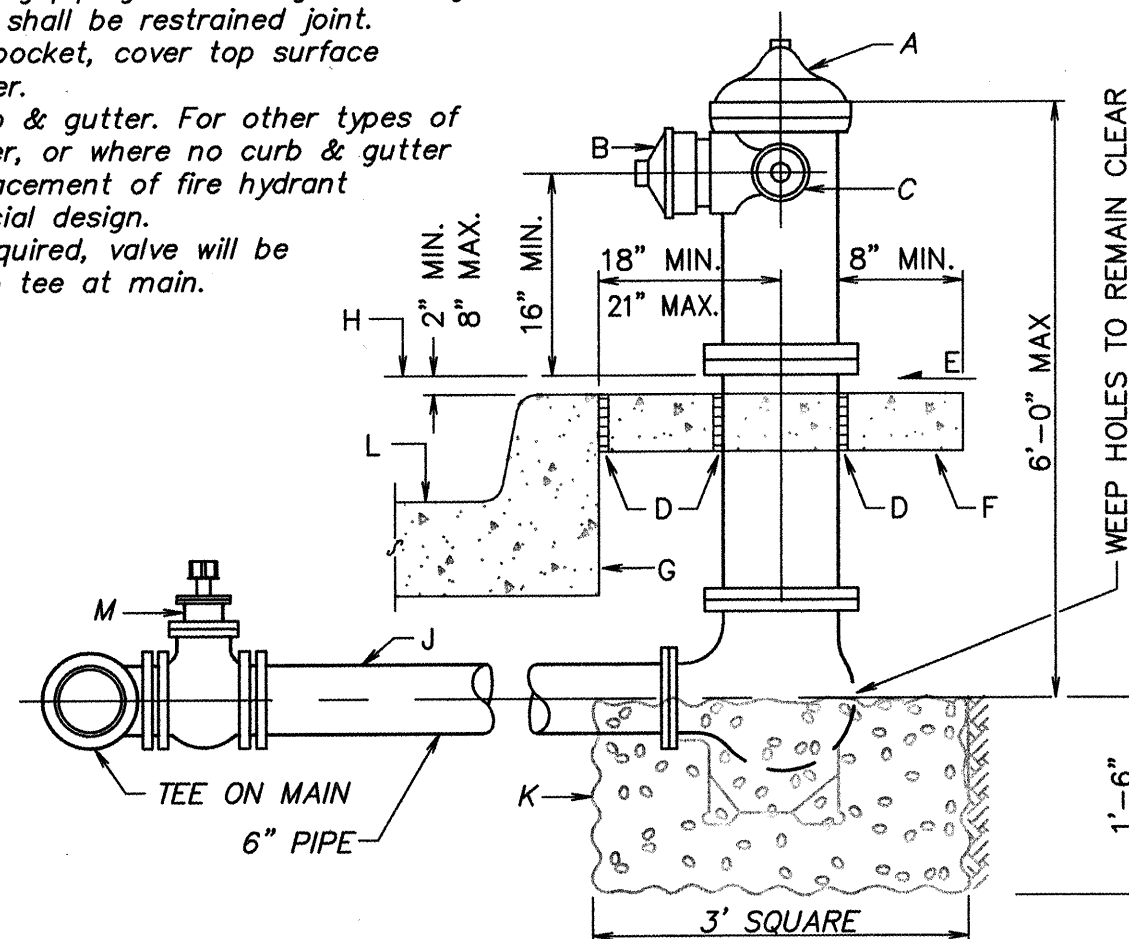
**CITY OF ALBUQUERQUE
PUBLIC FIRE HYDRANT INSTALLATION
STANDARD DRAWING 2340-A**

GENERAL NOTES

1. No obstruction will be permitted within 3'-0" of fire hydrant.
2. Hydrant leg shall be valved from mains 10" diameter and larger and in arterial streets located in commercial areas.
3. Contractor shall be responsible for setting top flange of fire hydrant to the dimensions shown.
4. For fire hydrant locations, see dwg. 2347-A.
5. When new or existing sidewalk abuts curb, reconstruct sidewalk per dwg. 2430, 2431.
6. Pumper nozzle to be set facing the traveled way, unless otherwise noted on plans.

CONSTRUCTION NOTES

- A. Fire hydrant per specifications
- B. Pumper nozzle 4 1/2"
- C. Hose nozzle 2 1/2"
- D. 1/2" expansion joint material
- E. Slope 1/4" per foot
- F. 3' x 3' x 6" concrete square pad, to be constructed around fire hydrant's centerline when not located within sidewalk or concrete area.
- G. Back of curb
- H. Controlled elevation line, level in all directions.
- I. Use of restrained joints is mandatory. All fire hydrant leg piping and fittings including tee on main shall be restrained joint.
- K. Gravel drain pocket, cover top surface with tar paper.
- L. Standard curb & gutter. For other types of curb & gutter, or where no curb & gutter exist, the placement of fire hydrant requires special design.
- M. If valve is required, valve will be connected to tee at main.

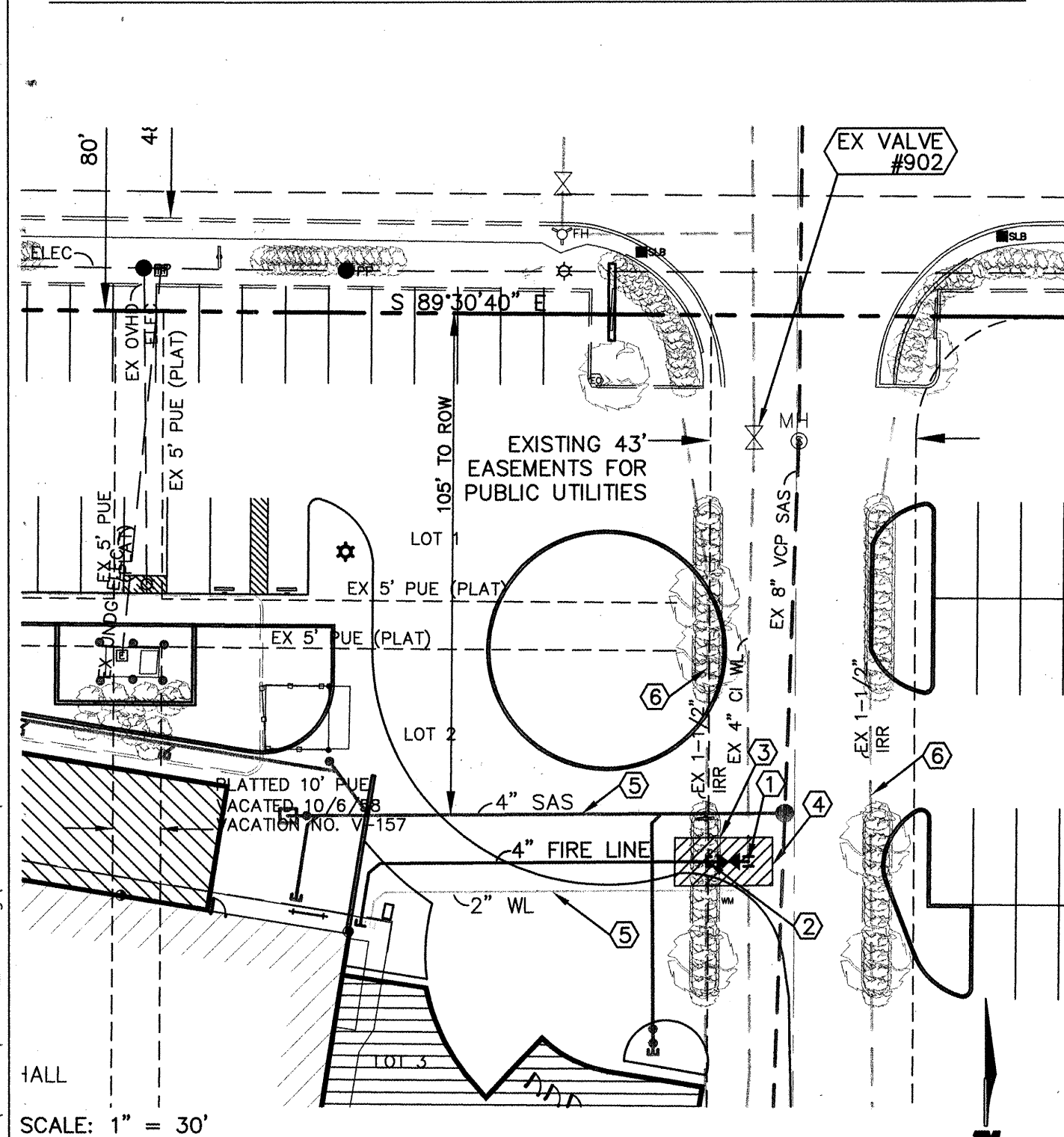


DETAIL OF FIRE HYDRANT SETTING

PROJECT NO. 767781 SHEET 4 OF 6	ZONE ATLAS J-20	TITLE: ST. PAUL'S UNITED METHODIST CHURCH
------------------------------------	--------------------	---

hydrant4.dwg

**CITY OF ALBUQUERQUE
4" FIRE LINE INSTALLATION
SITE DETAIL**



SCALE: 1" = 30'

**WILSON
& COMPANY**

2600 THE AMERICAN ROAD SE, STE 100
RIO RANCHO, NEW MEXICO 87124
(505) 898-8021

PROJECT NO. 767781 SHEET 5 OF 6	ZONE ATLAS J-20	TITLE: ST. PAUL'S UNITED METHODIST CHURCH
------------------------------------	--------------------	---

FIRE LINE5.dwg

**CITY OF ALBUQUERQUE
4" FIRE LINE INSTALLATION
SITE DETAIL**

NOTICE TO CONTRACTORS

GENERAL NOTES

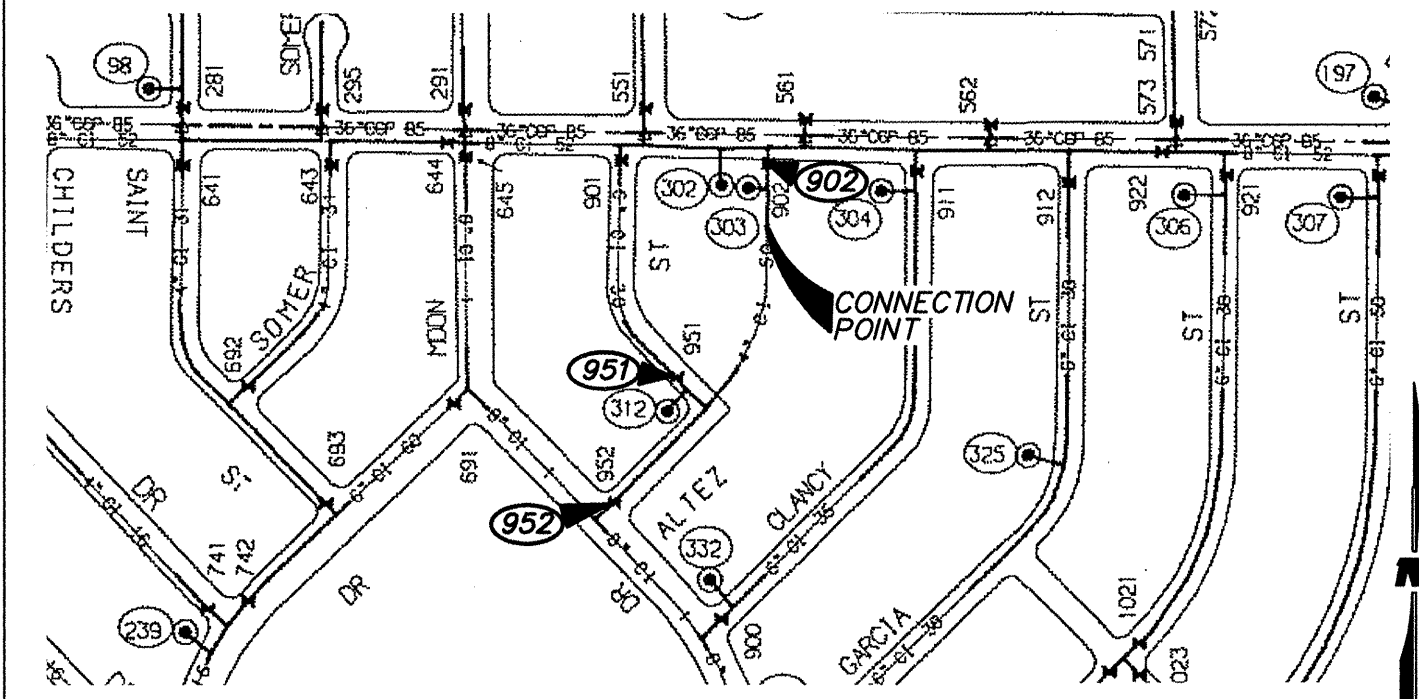
1. LIMITS OF WORK ORDER ARE WITHIN RESERVED EASEMENT FOR PUBLIC UTILITIES.
2. 43' EASEMENTS FOR PUBLIC UTILITIES PER PLAT ENTITLED 'TRACT A ST. PAUL'S UNITED METHODIST CHURCH', FILED 08/11/2005, BK 2005C, PG 278, IN THE OFFICE OF THE BERNALILLO COUNTY CLERK.

CONSTRUCTION NOTES

- ① MAKE NON-PRESSURE CONNECTION TO EX 4" WL; INSTALL 4"x4" TEE, 4" GV, RING & BOX PER STA DWG 2326 & 2328.
- ② INSTALL 8.5 LF 4" C-900 WL WITH RESTRAINED JOINTS OR BOLTED FLANGES FROM 4" MAIN TO CAP AT EASEMENT EDGE. INSTALL 4" CAP. NO CONCRETE BLOCKING WILL BE ALLOWED.
- ③ REMOVE AND DISPOSE, AS NECESSARY, EXISTING CONCRETE CURB AND LANDSCAPING.
- ④ NEATLY CUT, REMOVE AND REPLACE EXISTING PAVEMENT PER STD DWG 2465.
- ⑤ 4" SAS & 2" WL RELOCATE BY SEPARATE TAPPING PERMITS.
- ⑥ EXISTING 1 1/2" IRRIGATION LINES TO BE REMOVED/ABANDONED (NOT THIS CONTRACT).

WATER SHUTOFF PLAN

SHUT OFF VALVES: 902, 951 & 952



**WILSON
& COMPANY**

2600 THE AMERICAN ROAD SE, STE 100
RIO RANCHO, NEW MEXICO 87124
(505) 898-8021

PROJECT NO. 767781 SHEET 6 OF 6	ZONE ATLAS J-20	TITLE: ST. PAUL'S UNITED METHODIST CHURCH
------------------------------------	--------------------	---

FIRE LINE6.dwg

DESIGNER:	WILSON & COMPANY
CONTACT:	KRISTINE SUSCO
PHONE:	(505) 898-8021
CONTRACTOR:	SUN STATE MECHANICAL, INC
CONTACT:	MARK WATKINS
PHONE:	(505) 345-3409
OWNER:	ST. PAUL'S UNITED METHODIST CHURCH
CONTACT:	BOB HOFFMAN
PHONE:	(505) 328-0153

**WILSON
& COMPANY**

2600 THE AMERICAN ROAD SE,
SUITE 100
RIO RANCHO, NEW MEXICO
87124
(505) 898-8021

**ST. PAUL'S
UNITED METHODIST CHURCH**
**PUBLIC FIRE HYDRANT INSTALLATION
4" FIRE LINE INSTALLATION**