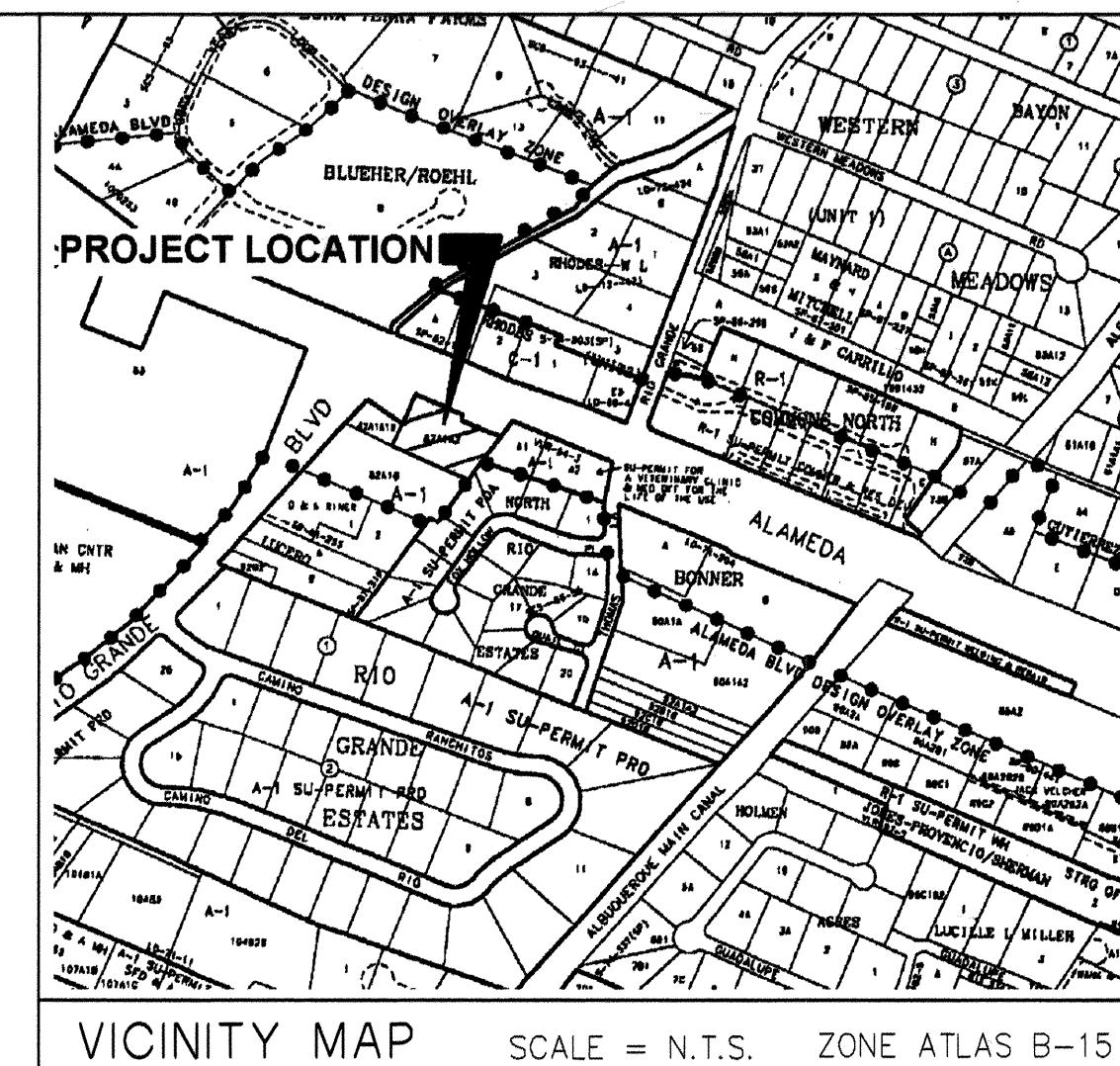


SCANNED BY
PLANNING

ALAMEDA BOULEVARD UTILITY IMPROVEMENTS

ALAMEDA BLVD N.W.
ALBUQUERQUE, N.M.

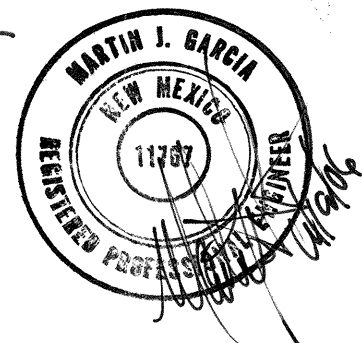
SEPTEMBER 13, 2005



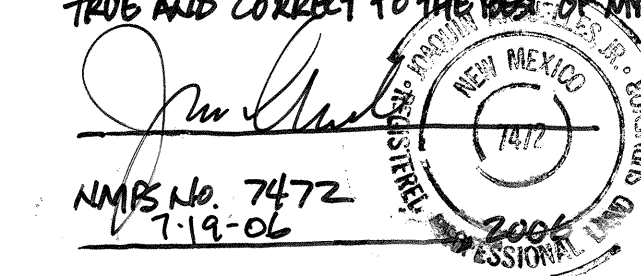
INDEX OF DRAWINGS

- | | |
|---|-----------------------------|
| 1 | COVER SHEET |
| 2 | GENERAL NOTES |
| 3 | WATER LINE PLAN AND PROFILE |

I, MARTIN GARCIA, OF THE FIRM OF ABE ENGINEERING, INC., A REGISTERED PROFESSIONAL ENGINEER, IN THE STATE OF NEW MEXICO, DO HEREBY CERTIFY, TO THE BEST OF MY KNOWLEDGE AND BELIEF, THAT THE INFRASTRUCTURE INSTALLED AS PART OF THIS PROJECT HAS BEEN INSPECTED BY ME OR BY A QUALIFIED PERSON UNDER MY DIRECT SUPERVISION AND HAS BEEN CONSTRUCTED IN ACCORDANCE WITH THE PLANS AND BY THE CITY ENGINEER, AND THAT THE ORIGINAL DESIGN INTENT OF THE APPROVED PLANS HAS BEEN MET EXCEPT AS NOTED BY ME ON THE AS-BUILT CONSTRUCTION DRAWINGS. THIS CERTIFICATION IS BASED ON SITE INSPECTIONS BY ME OR PERSONNEL UNDER MY DIRECTION. SURVEY INFORMATION PROVIDED BY JOAQUIN ARQUELLES N.M.P.S. NUMBER 7472



SURVEYOR'S CERTIFICATION
I, JOAQUIN ARQUELLES, NEW MEXICO PROFESSIONAL SURVEYOR NUMBER 7472, HEREBY CERTIFY THAT THE AS-BUILT INFORMATION SHOWN HEREON IS THE RESULT OF AN ACTUAL FIELD SURVEY PERFORMED BY ME OR UNDER MY DIRECT SUPERVISION AND THAT THE SAME IS TRUE AND CORRECT TO THE BEST OF MY KNOWLEDGE AND BELIEF.

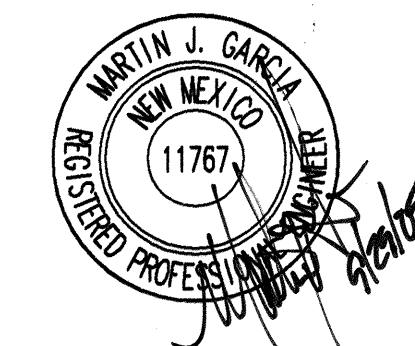


ABQ
Engineering,
Inc.

• Engineers • Planners
• Construction Services
8739 Academy Road NE, Suite 130
Albuquerque, NM 87109
505-255-7802 FAX 505-255-7802
ABQ NO. 24119

APPROVED AS RECORD DRAWINGS
DESIGN REVIEW SECTION
CITY CONSTRUCTION ENGINEER
Anthony Lopez
DATE: 07/22/09

CAUTION:
NOTE THAT ALL EXISTING UTILITIES MAY NOT BE SHOWN. ALL EXISTING SERVICE CONNECTIONS ARE NOT SHOWN. ANY EXISTING UTILITIES THAT ARE SHOWN ARE APPROXIMATE LOCATION ONLY. IT SHALL BE THE SOLE RESPONSIBILITY OF THE CONTRACTOR TO CONTACT ALL THE UTILITY OWNERS AND TO CONDUCT ALL NECESSARY FIELD INVESTIGATIONS PRIOR TO ANY EXCAVATIONS TO DETERMINE THE ACTUAL LOCATION OF UTILITIES AND OTHER IMPROVEMENTS.



REV.	SHEETS	CITY ENGINEER	DATE	USER DEPT.	DATE	USER DEPT.	DATE
ENGINEERS STAMP & SIGNATURE	APPROVALS	ENGINEER	DATE	* * * * *	* * * * *	* * * * *	* * * * *
	DRC Chairman	<i>[Signature]</i>	10-27-05	APPROVED FOR CONSTRUCTION			
	Transportation	N/A (NMF)	10/10/05				
	Water/Wastewater	<i>William J. Balala</i>	10-3-05				
	Hydrology	<i>RSAS</i>	10/14/05				
	Parks						
	Constr. Coord.						
	Envir. Health						
	City Project No.					Sheet Of	
	County Project 7695.81					1 3	

General Notes

1. TWO WORKING DAYS PRIOR TO ANY EXCAVATION, CONTRACTOR MUST CONTACT NEW MEXICO ONE CALL SYSTEM (260-1990) AND DETERMINE LOCATION OF EXISTING UTILITIES.
2. PRIOR TO ANY CONSTRUCTION, THE CONTRACTOR SHALL EXCAVATE AND VERIFY THE HORIZONTAL AND VERTICAL LOCATIONS OF ALL OBSTRUCTIONS. SHOULD A CONFLICT EXIST, THE CONTRACTOR SHALL NOTIFY THE ENGINEER OR THE SURVEYOR SO THAT THE CONFLICT CAN BE RESOLVED WITHOUT DELAY.
3. ALL EXISTING SIGNS, MARKERS, DELINEATORS, ETC., WITHIN THE CONSTRUCTION LIMITS SHALL BE REMOVED, STORED AND RE-SET BY THE CONTRACTOR.
4. THE CONTRACTOR SHALL NOTIFY THE ENGINEER NOT LESS THAN SEVEN (7) DAYS PRIOR TO STARTING WORK IN ORDER THAT THE ENGINEER MAY TAKE NECESSARY MEASURES TO INSURE THE PRESERVATION OF SURVEY MONUMENTS. CONTRACTOR SHALL NOT DISTURB PERMANENT SURVEY MONUMENTS WITHOUT THE CONSENT OF THE ENGINEER AND SHALL NOTIFY THE ENGINEER AND BEAR THE EXPENSE OF REPLACING ANY THAT MAY BE DISTURBED WITHOUT PERMISSION. REPLACEMENT SHALL BE DONE ONLY BY THE CITY SURVEYOR. WHEN A CHANGE IS MADE IN THE FINISHED ELEVATIONS OF THE PAVEMENT OF ANY ROADWAY IN WHICH A PERMANENT SURVEY MONUMENT IS LOCATED, CONTRACTOR SHALL, AT HIS OWN EXPENSE, ADJUST THE MONUMENT COVER TO THE NEW GRADE UNLESS OTHERWISE SPECIFIED. REFER TO SECTION 4.4 OF THE GENERAL CONDITIONS OF THE STANDARD SPECIFICATIONS UPDATE NO. 7.
5. ANY WORK AFFECTING AN ARTERIAL ROADWAY REQUIRES A TWENTY-FOUR HOUR CONSTRUCTION TIME.
6. THE CONTRACTOR SHALL SUBMIT A TRAFFIC CONTROL PLAN TO NMDOT AT LEAST 72 HOURS PRIOR TO COMMENCEMENT OF WORK. PLANS SHALL BE PREPARED IN ACCORDANCE WITH MUTCD REQUIREMENTS AND BY CERTIFIED PERSONNEL AND MUST BE APPROVED PRIOR TO COMMENCEMENT OF WORK ON THE PROJECT.
7. SUBJECT TO THE APPROVED TRAFFIC CONTROL PLAN, AT LEAST ONE LANE SHALL BE OPEN TO TRAFFIC AT ALL TIMES. CONTRACTOR SHALL PROVIDE PROPER SIGNAGE AND FLAGMAN AND SHALL MAINTAIN THE TRAFFIC LANE IN SUCH A MANNER AS TO ASSURE PROPER SAFETY TO THE TRAVELING PUBLIC ON ALL AFFECTED ROADS. THE CONTRACTOR SHALL PROVIDE ACCESS TO ALL PRIVATE AND PUBLIC PROPERTY AT ALL TIMES, EXCEPT WHEN GRADING, EXCAVATION AND BACKFILL OPERATIONS ARE BEING CONDUCTED IMMEDIATELY IN FRONT OF THE PROPERTY, IN WHICH CASE ACCESS WILL NOT BE DENIED FOR MORE THAN 4 HOURS WITHOUT APPROVAL BY THE CITY.
8. TRAFFIC LANES PROVIDED DURING CONSTRUCTION SHALL BE MAINTAINED, IN SUCH A CONDITION UNDER ALL WEATHER CONDITIONS, SO AS TO PERMIT THE REASONABLE PASSAGE OF PASSENGER VEHICLES, AND SHALL BE KEPT GRADED AND SMOOTH, AND WATERED SEVERAL TIMES DAILY TO CONTROL DUST.
9. SEVEN (7) WORKING DAYS PRIOR TO BEGINNING CONSTRUCTION, THE CONTRACTOR WILL SUBMIT A DETAILED CONSTRUCTION SCHEDULE TO THE CITY CONSTRUCTION COORDINATION DIVISION. TWO (2) DAYS PRIOR TO CONSTRUCTION, THE CONTRACTOR WILL OBTAIN A BARRICADING PERMIT FROM THE CONSTRUCTION COORDINATION DIVISION. CONTRACTOR SHALL NOTIFY BARRICADE ENGINEER (924-3400) PRIOR TO OCCUPYING AN INTERSECTION. REFER TO SECTION 19 OF SPECIFICATIONS.
10. THE SPECIFICATIONS USED FOR THIS PROJECT ARE THE CITY OF ALBUQUERQUE STANDARD SPECIFICATIONS FOR PUBLIC WORKS CONSTRUCTION, 1994 EDITION, UPDATE NO. 7.
11. THE CONTRACTOR WILL BE RESPONSIBLE FOR DISPOSING OF ALL DEBRIS, INCLUDING, BUT NOT LIMITED TO HAZARDOUS WASTE AT DISPOSAL SITES APPROVED BY GOVERNMENTAL AGENCIES REGULATING THE DISPOSAL OF SUCH MATERIALS.
12. ALL WATER VALVE BOXES MANHOLES IN THE STREET CONSTRUCTION ARE TO BE ADJUSTED TO FINISH GRADE AND WILL BE MEASURED AND PAID PER EACH.
13. SUBGRADE PREPARATIONS UNDER SIDEWALKS AND DRIVE PADS, AND SUBGRADE AND SUBBASE PREPARATION UNDER CURB AND GUTTER IS CONSIDERED INCIDENTAL TO THE CONSTRUCTION OF SUCH, AND NO DIRECT PAYMENT SHALL BE MADE FOR THOSE ITEMS OF WORK.
14. ALL EXCAVATION WILL BE GOVERNED BY FEDERAL, STATE AND LOCAL LAWS, RULES, AND REGULATIONS CONCERNING CONSTRUCTION SAFETY AND HEALTH.

15. ALL SIGNS AND CODING WILL BE IN ACCORDANCE WITH THE "MANUAL OF UNIFORM TRAFFIC CONTROL DEVICES FOR STREET AND HIGHWAYS" CURRENT EDITION PUBLISHED BY THE U.S. DEPARTMENT OF TRANSPORTATION.
16. WHEN ABUTTING NEW PAVEMENT TO EXISTING INTERSECTING STREETS, SAW CUT EXISTING PAVEMENT TO A STRAIGHT LINE AND AT RIGHT ANGLES AND REMOVE ANY BROKEN OR CRACKED PAVEMENT. NO DIRECT PAYMENT WILL BE MADE FOR SAW CUTTING PER BERNALILLO COUNTY STD DWG 2465.
17. CONTRACTOR WILL MAKE ALL WATER VALVES AND MANHOLES ACCESSIBLE TO THE CITY AT ALL TIMES.
18. CONTRACTOR WILL CONFINE HIS WORK WITHIN THE CONSTRUCTION EASEMENT LIMITS AND/OR RIGHT-OF-WAY, OR PROVIDE COPIES OF AGREEMENTS WITH ADJACENT LANDOWNERS TO THE CITY OF ALBUQUERQUE.
19. THE CONTRACTOR AGREES TO TAKE NECESSARY SAFETY PRECAUTIONS AS REQUIRED BY FEDERAL, STATE AND LOCAL AUTHORITIES TO PROTECT PEDESTRIAN AND VEHICULAR TRAFFIC IN THE CONSTRUCTION AREA, WHICH INCLUDE BUT ARE NOT LIMITED TO: MAINTAINING ADEQUATE WARNING SIGNS, BARRICADES, LIGHTS, GUARD FENCES, WALKS AND BRIDGES.
21. TACK COAT FOR SURFACE COURSE REQUIREMENTS WILL BE DETERMINED BY THE FIELD ENGINEER.
22. PERMANENT PAVEMENT STRIPING AND MARKINGS WILL BE PLACED BY THE CONTRACTOR. ROAD SHALL NOT BE OPENED TO THE TRAFFIC UNTIL IT IS STRIPED. ALL STRIPING, PAVEMENT MARKINGS INCLUDING CROSSWALKS, ARROWS ARE TO BE CONSTRUCTED OF COLD PLASTIC AND LINE MARKINGS ARE TO BE PAINTED IN ACCORDANCE WITH THE MANUAL OF UNIFORM TRAFFIC CONTROL DEVICES.
23. ALL ASPHALTIC CONCRETE SHALL BE MINIMUM 1800 LB. STABILITY AND COMPACTED TO 93%-97% MODIFIED MARSHALL DENSITY UNLESS OTHERWISE NOTED ON THE PLANS.
24. CONTRACTOR SHALL MAINTAIN A GRAFFITI-FREE WORK SITE. CONTRACTOR SHALL PROMPTLY REMOVE ANY AND ALL GRAFFITI FROM EQUIPMENT, WHETHER PERMANENT OR TEMPORARY.
25. CONTRACTOR SHALL COORDINATE WITH WATER SYSTEMS DIVISION (857-8200) SEVEN (7) WORKING DAYS PRIOR TO ANY WORK THAT MAY AFFECT EXISTING CITY PUBLIC WATER OR SEWER UTILITIES. CONTRACTOR SHALL BE RESPONSIBLE FOR TIMING AND COORDINATION OF WATER SHUTOFF. EXISTING CITY VALVES TO BE OPERATED BY CITY PERSONNEL ONLY.
26. ALL EXCAVATION, TRENCHING, AND SHORING ACTIVITIES MUST BE CARRIED OUT IN ACCORDANCE WITH OSHA 29CFR 1926.650 SUBPART P.
27. FOR STORM DRAIN CONSTRUCTION, RCP PIPE JOINTS SHALL NOT BE GROUTED PRIOR TO FINAL INSPECTION. FINAL INSPECTION WILL DETERMINE JOINTS TO BE GROUTED FOR FINAL ACCEPTANCE OF THE CONSTRUCTION.
28. IF HUMAN REMAINS ARE DISCOVERED ON THE SITE, ALL CONSTRUCTION WILL CEASE AND THE OFFICE OF THE MEDICAL EXAMINER MUST BE CONTACTED FOR FURTHER INSTRUCTIONS.
29. EMD'S ARE REQUIRED OVER WATER LINE PER CITY OF ALBUQUERQUE SPECIFICATIONS.

THE FOLLOWING NOTES ALSO APPLY WHEN CHECKED

- ☒ ALL UTILITIES AND UTILITY SERVICE LINES SHALL BE INSTALLED PRIOR TO PAVING.
- ☐ BACKFILL COMPACTION SHALL BE ACCORDING TO SPECIFIED STREET USE.
- ☐ TACK COAT REQUIREMENTS SHALL BE DETERMINED BY THE ENGINEER.
- ☐ SIDEWALK AND WHEELCHAIR RAMPS WITHIN THE CURB RETURNS SHALL BE CONSTRUCTED WHEREVER A NEW CURB RETURN IS CONSTRUCTED.
- ☐ IF CURB IS DEPRESSED FOR A DRIVEPAD, THE DRIVEPAD SHALL BE CONSTRUCTED PRIOR TO ACCEPTANCE OF CURB AND GUTTER.
- ☐ ALL STORM DRAINAGE FACILITIES SHALL BE COMPLETED PRIOR TO FINAL ACCEPTANCE.
- ☐ THE REQUESTER OR DEVELOPER SHALL BE RESPONSIBLE FOR REPAIR OR REPLACEMENT OF ALL CURB AND GUTTER OR SIDE-WALK DAMAGE AFTER APPROVAL BY THE CITY ENGINEER OR WORK COMPLETED BY THE CONTRACTOR.

ABQ
Engineering,
Inc.

•Engineers •Planners
•Construction Services
1631 Eubank NE, Suite C,
Albuquerque, NM 87112
505-255-7802 FAX 505-255-7902
ABQ NO. 24119

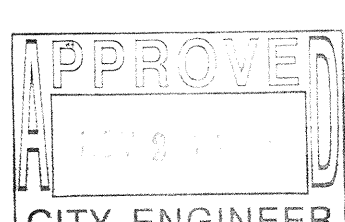
CITY OF ALBUQUERQUE
PUBLIC WORKS DEPARTMENT
ENGINEERING DEVELOPMENT GROUP

ALAMEDA BOULEVARD UTILITY IMPROVEMENTS
GENERAL NOTES

Design Review Committee



City Engineer Approval



Last Design Update

Mo./Day/Yr. Mo./Day/Yr.

City Project No.

7695.81

Zone Map No.

B-15

SHEET OF

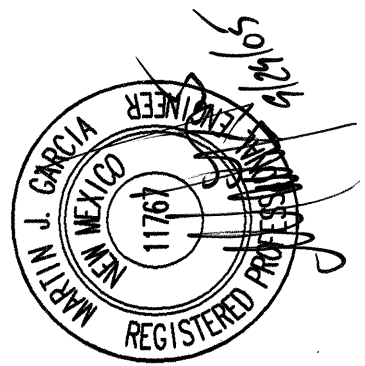
2

3

SURVEY INFORMATION

NO.	BY	FIELD NOTES	
		DATE	

ENGINEER'S SEAL



AS BUILT INFORMATION

CONTRACTOR	WORK	DATE	DATE	DATE	DATE
CONTRACTOR	WORK	DATE	DATE	DATE	DATE

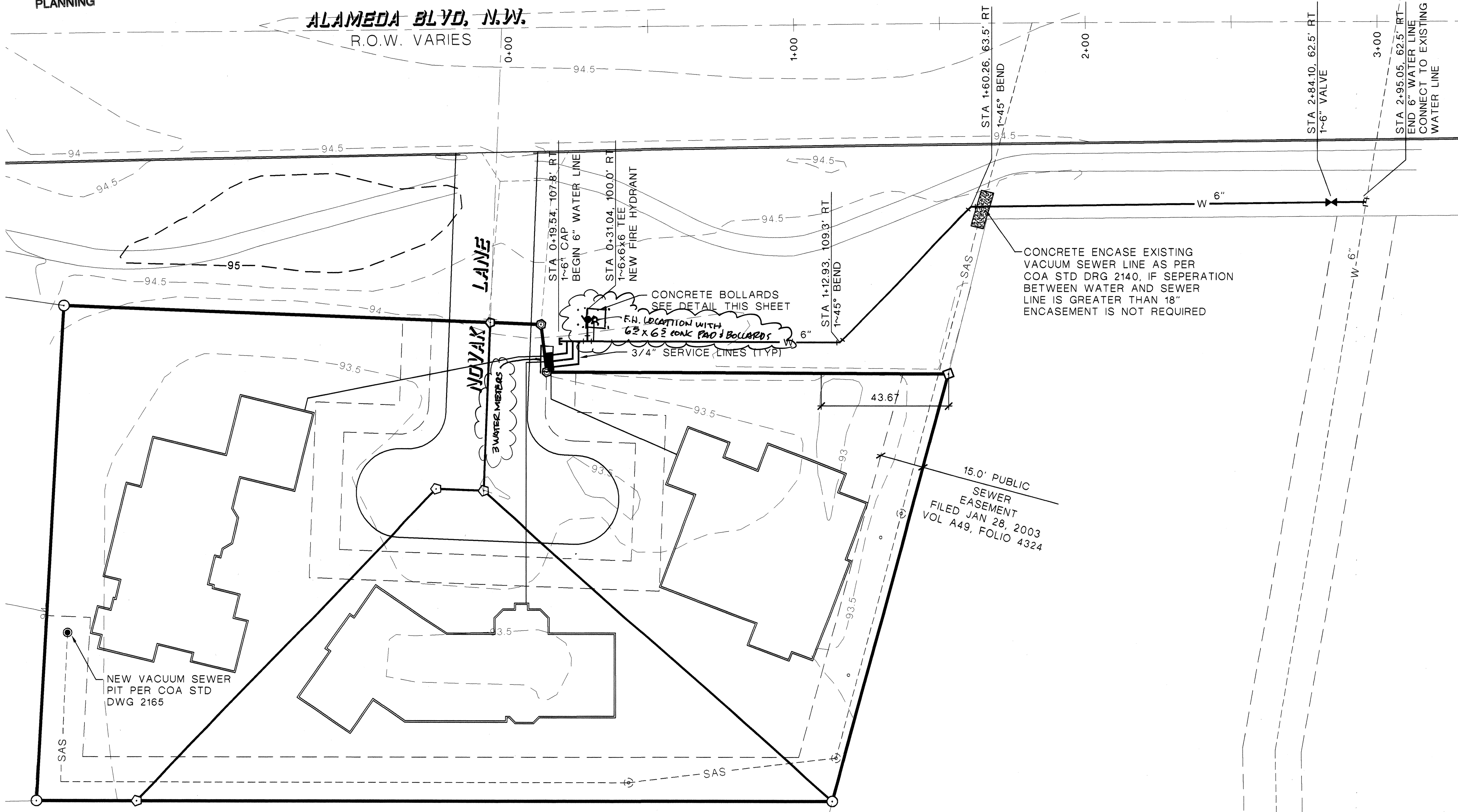
BENCH MARKS

STATION MARK IS A STANDARD USCE BRASS TABLET	STAMPED PER "FLP10-60, 1960". SET ON TOP OF CONCRETE BRIDGE ABUTMENT
X = 383,383.08	Y = 1,526,972.50 Z = 5007.73

MICRO-FILM INFORMATION

RECORDED BY	NO.	DATE

ALAMEDA BLVD, N.W.
R.O.W. VARIES



Notes

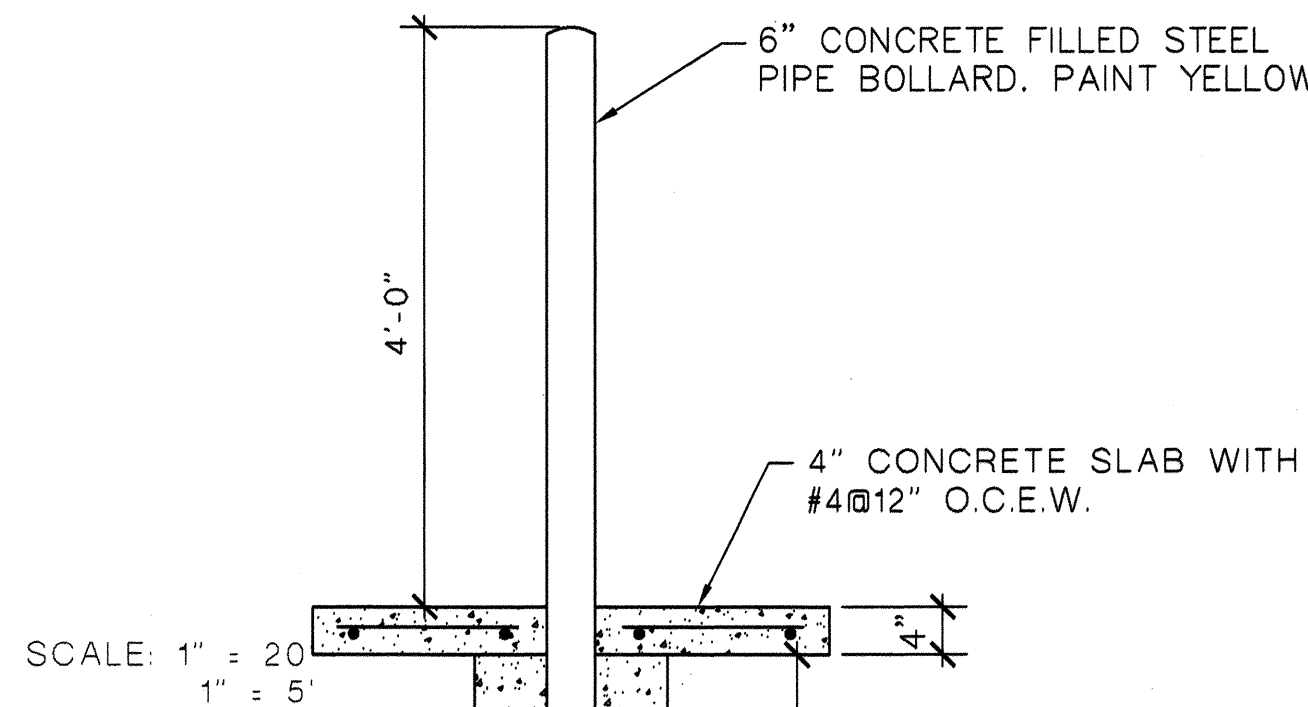
- STATIONING ALONG ALAMEDA BOULEVARD IS THE CENTERLINE OF R.O.W.
- REFERENCE NORTH RIO GRANDE ESTATES WATER LINE DESIGN DRAWING NO 2966 FOR EXISTING 6" WATER LINE.
- ANY IRRIGATION DAMAGE SUSTAINED DURING THE INSTALLATION OF NEW WATER LINE SHALL BE REPLACED IN KIND. COORDINATE WITH BERNALILLO COUNTY PARKS AND RECREATION DEPARTMENT. CLAY CAMPBELL (314-0400)
- CONTRACTOR SHALL PROVIDE A MINIMUM 18" VERTICAL SEPARATION BETWEEN EXISTING VACUUM SEWER AND NEW 6" WATER LINE.

Legend

	LIMITS OF WORK AREA PER C.O.A. STD DWG. 2465.
W	EXISTING WATER LINE
--- SAS ---	EXISTING VACUUM SEWER LINE
— W —	NEW WATER LINE
	NEW WATER METER
	NEW WATER VALVE
	EXISTING SEWER PIT
	NEW SEWER PIT

Reference Drawings

COA STD DWG 2362 (WATER SERVICE)
COA STD DWG 2326 (VALVES)
COA STD DWG 2328 (VALVES)
COA STD DWG 2340 (HYDRANT)
COA STD DWG 2165 (VACUUM SEWER PIT)



BOLLARD SECTION

SCALE: 3/4" = 1'-0"

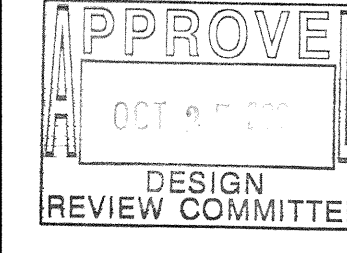
ABQ
Engineering,
Inc.

Engineers · Planners
Construction Services
1631 Eubank NE, Suite C,
Albuquerque, NM 87112
505-255-7802 FAX 505-255-7902
ABQ NO. 24119

CITY OF ALBUQUERQUE
PUBLIC WORKS DEPARTMENT
ENGINEERING DEVELOPMENT GROUP

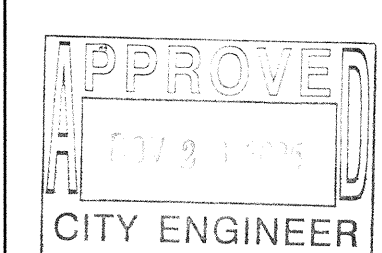
ALAMEDA BOULEVARD UTILITY IMPROVEMENTS
WATER LINE PLAN AND PROFILE

Design Review Committee



CITY ENGINEER

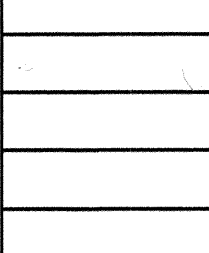
City Engineer Approval



CITY ENGINEER

Last Design Update

Mo./Day/Yr.



CITY ENGINEER

City Project No.

7695.81

Zone Map No.

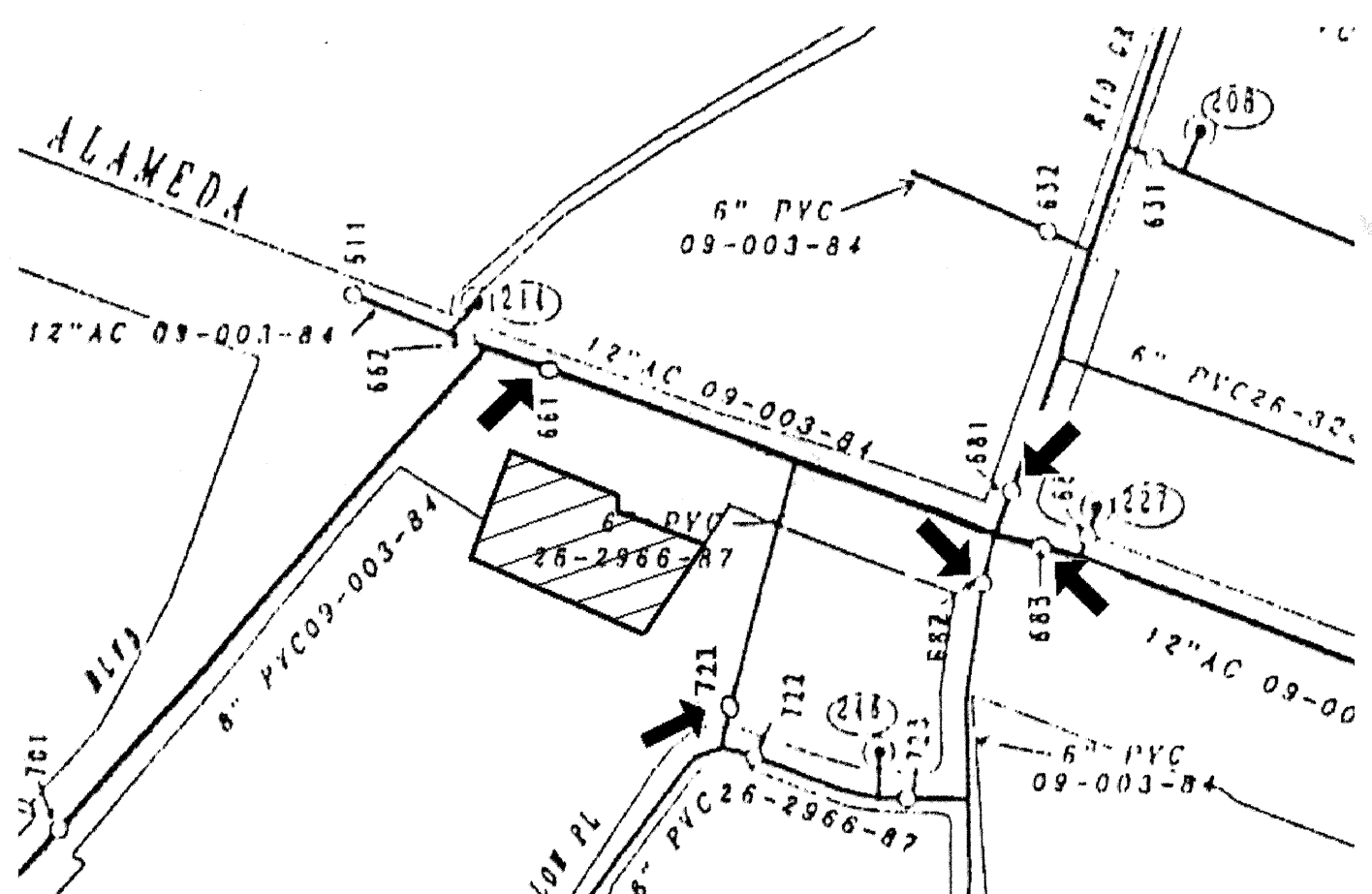
B-15

SHEET

3

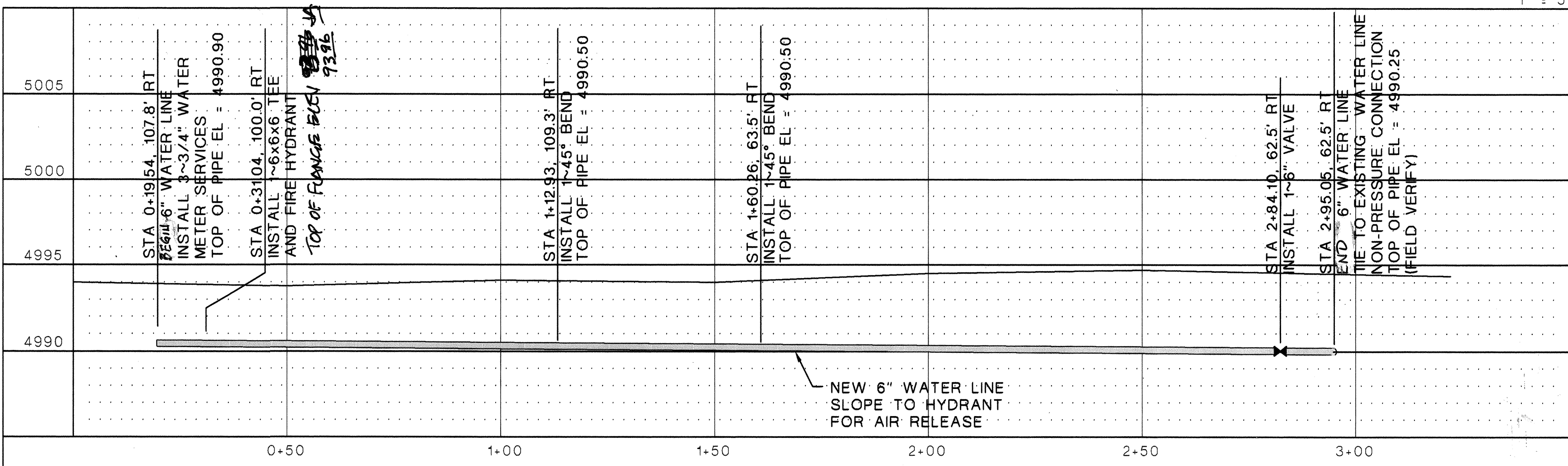
OF

3



Water Shut Off Plan General Notes

- CONTRACTOR SHALL NOTIFY CITY OF ALBUQUERQUE WATER SYSTEMS SEVEN (7) WORKING DAYS IN ADVANCE OF NEEDING EXECUTION OF WATER SHUT OFF PLAN
- ONLY WATER SYSTEMS PERSONNEL ARE AUTHORIZED TO OPERATE VALVES
- FOR CONNECTION ALONG THE ALAMEDA R.O.W., CLOSE VALVES 661, 681, 682, 683 AND 721.



LENGTH OF RESTRAINED PIPE (FEET)						
PIPE SIZE	90	45	22.5	11.25	TEE	VALVE
4"	15'	6'	4'	2'	15'	33'
6"	18'	7'	4'	2'	18'	46'
8"	22'	8'	4'	2'	22'	59'
10"	27'	11'	5'	3'	27'	72'

LENGTH OF RESTRAINED PIPE ON EACH SIDE OF THE BEND. RESTRAIN BRANCH AT FITTING ONLY. MINIMUM ATTACHED PIPE LENGTH, RUN EACH SIDE OF TEE: 10.00 FEET