

IRRIGATION LEGEND

●●●	RAINBIRD #1400 SERIES BUBBLER (SEE COA STANDARD DETAIL DRAWINGS: 2710, 2711, 2711-A & 2712)
●●●	#1401 - .25 GPM
●●●	#1402 - .50 GPM
●●●	#1404 - 1.0 GPM
⊕	ELECTRIC VALVE: RAINBIRD #200-PEB 2" PLASTIC ELECTRIC VALVE WITH FLOW CONTROL (SEE COA STANDARD DETAIL DRAWING: 2703)
⊕	ELECTRIC VALVE: RAINBIRD #150-PEB 1 1/2" PLASTIC ELECTRIC VALVE WITH FLOW CONTROL (SEE COA STANDARD DETAIL DRAWING: 2703)
⊕	ELECTRIC VALVE: RAINBIRD #100-PEB 1" PLASTIC ELECTRIC VALVE WITH FLOW CONTROL (SEE COA STANDARD DETAIL DRAWING: 2703)
⊕	ISOLATION VALVE ASSEMBLY (LINE SIZE) - SEE COA STANDARD DETAIL #2707
Ⓜ	MOTOROLA IRRINET "M" CONTROLLER WITH STRONGBOX ENCLOSURE, KEYPAD AND DOMED ANTENNA. UNIT SHALL COMMUNICATE ON COA RADIO FREQUENCY. (SEE DETAIL DRAWING: B/4 & D/4) (12 STATION OUTPUT)
Ⓟ	FEBCO #825YA REDUCED PRESSURE BACKFLOW PREVENTER WITH MASTER VALVE ASSEMBLY INSTALLED IN "CLAY" COLORED HOTBOX "HOT ROK" HEATED AND INSULATED BACKFLOW DEVICE ENCLOSURE - SEE PLAN FOR BACKFLOW SIZE (SEE DETAIL DRAWING: C/4)
Ⓢ	FLOW METER INTERMEDIATE MULTIJET SERIES FLOW METER WITH ELECTRICAL OUTPUT REGISTER - 1 PULSE = 1 GALLON - SEE DRAWING FOR SIZE (SEE DETAIL DRAWING: C/4)
Ⓜ	CITY WATER METER - SENSUS WATER METER (SEE COA STANDARD DETAIL DRAWING: 2362 OR 2363) SEE PLAN FOR WATER METER SIZE
Ⓐ	CRISPEN #UL10.1 1" UNIVERSAL AIR RELEASE VALVE ASSEMBLY
---	MAINLINE PIPING - SCH-40 PVC SOLVENT WELD PIPE (SEE PLAN FOR SIZE)
---	LATERAL PIPING - SCH-40 PVC SOLVENT WELD (SIZE INDICATED ON PLAN - UNSIZED PIPE IS 3/4")
---	SLEEVE PIPING - CLASS 200 PVC (TWO SIZES LARGER THAN PIPE TO BE SLEEVED)
---	120 VOLT ELECTRICAL POWER WIRE ROUTE
Ⓧ	VALVE ID NUMBER
---	FLOW IN GALLONS PER MINUTE

IRRIGATION NOTES

WATER PRESSURE: THE WATER PRESSURE AT THIS SITE HAS BEEN REPORTED AND NOTED ON DRAWING. THE CONTRACTOR SHALL VERIFY WATER PRESSURE AT THE NEAREST AVAILABLE FIRE HYDRANT PRIOR TO BEGINNING INSTALLATION OF IRRIGATION SYSTEM.
SPECIFICATIONS AND DETAIL DRAWINGS: THE CONTRACTOR SHALL REFER TO THE CITY OF ALBUQUERQUE'S STANDARD SPECIFICATIONS AND DETAIL DRAWINGS FOR IRRIGATION CONSTRUCTION. IN THE EVENT OF A CONFLICT BETWEEN SPECIFICATIONS AND IRRIGATION DESIGN, THE CONTRACTOR SHALL NOTIFY THE PROJECT MANAGER IN WRITING. THE CONTRACTOR SHALL NOT PROCEED WITH INSTALLATION OF CONFLICTING IRRIGATION COMPONENTS UNTIL HE RECEIVES CLARIFICATION IN WRITING FROM THE PROJECT MANAGER.
SCHEMATIC PIPE ROUTING: THE PIPE ROUTING SHOWN ON THESE PLANS IS SCHEMATIC AND MAY REQUIRE FIELD ADJUSTMENTS BY THE CONTRACTOR. WHEN POSSIBLE, THE CONTRACTOR SHALL INSTALL PIPING OUTSIDE OF ROOTZONE OF SHRUBS AND TREES. WHEN POSSIBLE, THE CONTRACTOR SHALL INSTALL PIPING CLOSE TO CENTER OF MEDIAN SO AS TO ALLOW FOR POSSIBLE FUTURE ROAD WIDENING.
IRRIGATION SATELLITE: THE CONTRACTOR SHALL HAVE A RADIO SIGNAL STRENGTH SURVEY PERFORMED TO VERIFY PROPER RADIO COMMUNICATION FROM IRRINET "ACE" CONTROLLER LOCATION TO PROPOSED IRRINET "M" CONTROLLER LOCATION OR FROM IRRINET "ACE" LOCATION TO CENTRAL COMPUTER LOCATION. PRIOR TO THE INSTALLATION OF THE CONTROLLER, THE CONTRACTOR SHALL CONTACT: TIM CAVALIER (256-9530) FOR THIS SERVICE. THE CONTRACTOR SHALL BE RESPONSIBLE FOR ALL COSTS ASSOCIATED WITH THE RADIO SIGNAL STRENGTH SURVEY.
ROAD CROSSINGS: THE CONTRACTOR SHALL BORE ALL SLEEVE PIPE WHEN CROSSING PAVED SURFACES.
SPECIAL PLANTING NOTE: THE CONTRACTOR SHALL INSTALL ALL CRAPE MYRTLE AND ARISTOCRAAT PEAR 10' FROM BACK OF CURB. THIS MAY EFFECT SOME BUBBLER LOCATIONS SHOWN ON PLAN.

REDRAWN FOR
RECORD PURPOSES
RECORD DRAWINGS

THIS RECORD DRAWING HAS BEEN PREPARED, BASED UPON INFORMATION FURNISHED BY THE CONTRACTOR. THE DESIGN PROFESSIONAL HAS NOT INDEPENDENTLY REVIEWED THE ACCURACY OF THE INFORMATION PROVIDED. THESE RECORD DRAWINGS ACCURATELY DEPICT THE FIELD CHANGES WHICH WERE REPORTED BY THE CONTRACTOR.



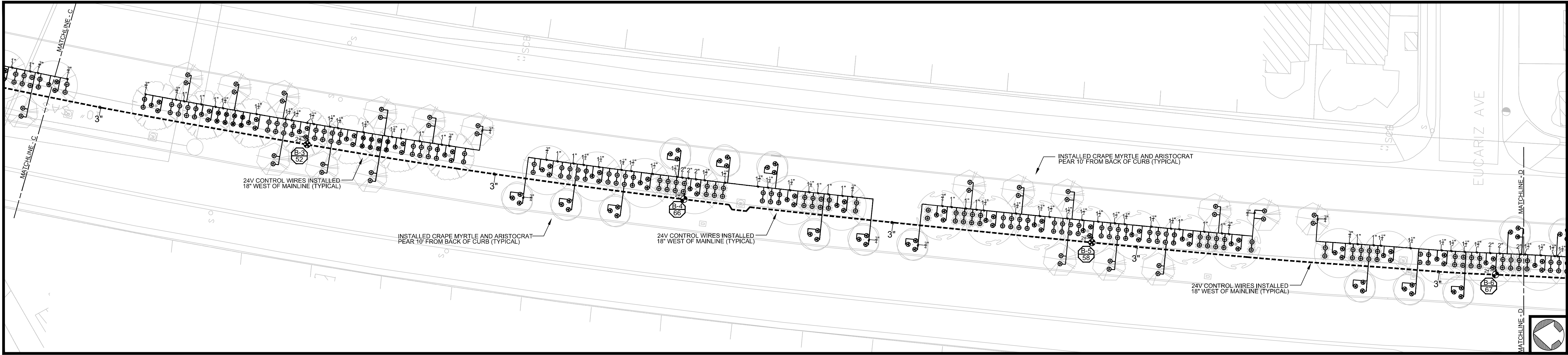
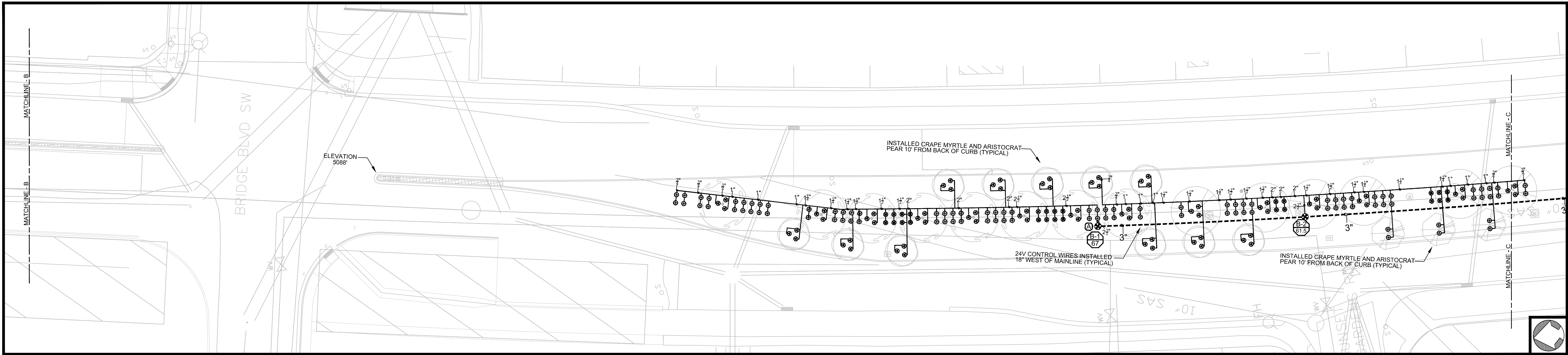
Irrigation Services LLC
Designers & Consultants

44 GOOD DRIVE BELEN, NM 87002
PHONE: (505) 861-1536
FAX: (505) 864-3212
EMAIL: info@IrrServices.com
WEB: IrrServices.com

0 30 60 90
SCALE: 1" = 30'

CITY OF ALBUQUERQUE CAPITAL IMPLEMENTATION PROGRAM DEPARTMENT OF MUNICIPAL DEVELOPEMENT			
TITLE: PROTOTYPE MEDIAN & INTERSTATE LANDSCAPES FY09-B UNSER BLDV: CENTRAL AVE. to SAN YGNACIO RD. (WO #1) IRRIGATION SYSTEM AS-BUILT RECORDS 08/18/10			
Design Review Committee	City Engineer Approval	Last Design Update	MO-DAY/1R 08/18/10
City Project No. 771402	Zone Map No. K-10, L-10	Sheet 1	Of 3

NO.		DATE	REVISIONS / REMARKS	BY	SEAL	SURVEY INFORMATION		BENCHMARK	AS BUILT INFORMATION	
						NO.	FIELD NOTES		BY	DATE
									INSPECTOR'S APPROVAL: JC	DATE: 07-10
									FIELD VERIFICATION BY: FR	DATE: 07-10
									DRAWING CORRECTED BY: FR, IS	DATE: 08-10
									MICRO-FILM INFORMATION	
									RECORDED BY	DATE:
									NO.	



IRRIGATION LEGEND

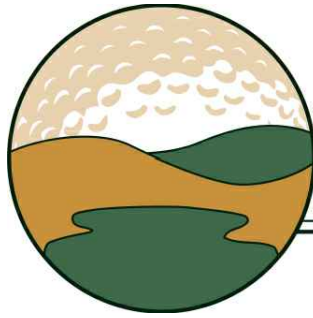
●●●	RAINBIRD #1400 SERIES BUBBLER (SEE COA STANDARD DETAIL DRAWINGS: 2710, 2711, 2711-A & 2712)
●●●	#1401 - .25 GPM
●●●	#1402 - .50 GPM
●●●	#1404 - 1.0 GPM
⊕	ELECTRIC VALVE; RAINBIRD #200-PEB 2" PLASTIC ELECTRIC VALVE WITH FLOW CONTROL (SEE COA STANDARD DETAIL DRAWING: 2703)
⊕	ELECTRIC VALVE; RAINBIRD #150-PEB 1 1/2" PLASTIC ELECTRIC VALVE WITH FLOW CONTROL (SEE COA STANDARD DETAIL DRAWING: 2703)
⊕	ELECTRIC VALVE; RAINBIRD #100-PEB 1" PLASTIC ELECTRIC VALVE WITH FLOW CONTROL (SEE COA STANDARD DETAIL DRAWING: 2703)
⊗	ISOLATION VALVE ASSEMBLY (LINE SIZE) - SEE COA STANDARD DETAIL #2707
Ⓜ	MOTOROLA IRRINET "M" CONTROLLER WITH STRONGBOX ENCLOSURE, KEYPAD AND DOMED ANTENNA. UNIT SHALL COMMUNICATE ON COA RADIO FREQUENCY. (SEE DETAIL DRAWING: B/4 & D/4) (12 STATION OUTPUT)
Ⓟ	FEBCO #825YA REDUCED PRESSURE BACKFLOW PREVENTER WITH MASTER VALVE ASSEMBLY INSTALLED IN "CLAY" COLORED HOTBOX "HOT ROK" HEATED AND INSULATED BACKFLOW DEVICE ENCLOSURE - SEE PLAN FOR BACKFLOW SIZE (SEE DETAIL DRAWING: C/4)
Ⓢ	FLOW METER INTERMEDIATE MULTJET SERIES FLOW METER WITH ELECTRICAL OUTPUT REGISTER - 1 PULSE = 1 GALLON - SEE DRAWING FOR SIZE (SEE DETAIL DRAWING: C/4)
Ⓜ	CITY WATER METER - SENSUS WATER METER (SEE COA STANDARD DETAIL DRAWING: 2362 OR 2363) SEE PLAN FOR WATER METER SIZE
Ⓐ	CRISPEN #UL10.1 1" UNIVERSAL AIR RELEASE VALVE ASSEMBLY
---	MAINLINE PIPING - SCH.40 PVC SOLVENT WELD PIPE (SEE PLAN FOR SIZE)
---	LATERAL PIPING - SCH.40 PVC SOLVENT WELD (SIZE INDICATED ON PLAN - UNSIZED PIPE IS 3/4")
---	SLEEVE PIPING - CLASS 200 PVC (TWO SIZES LARGER THAN PIPE TO BE SLEEVED)
---	120 VOLT ELECTRICAL POWER WIRE ROUTE
Ⓧ	VALVE ID NUMBER
---	FLOW IN GALLONS PER MINUTE

IRRIGATION NOTES

WATER PRESSURE: THE WATER PRESSURE AT THIS SITE HAS BEEN REPORTED AND NOTED ON DRAWING. THE CONTRACTOR SHALL VERIFY WATER PRESSURE AT THE NEAREST AVAILABLE FIRE HYDRANT PRIOR TO BEGINNING INSTALLATION OF IRRIGATION SYSTEM.
SPECIFICATIONS AND DETAIL DRAWINGS: THE CONTRACTOR SHALL REFER TO THE CITY OF ALBUQUERQUE'S STANDARD SPECIFICATIONS AND DETAIL DRAWINGS FOR IRRIGATION CONSTRUCTION. IN THE EVENT OF A CONFLICT BETWEEN SPECIFICATIONS AND IRRIGATION DESIGN, THE CONTRACTOR SHALL NOTIFY THE PROJECT MANAGER IN WRITING. THE CONTRACTOR SHALL NOT PROCEED WITH INSTALLATION OF CONFLICTING IRRIGATION COMPONENTS UNTIL HE RECEIVES CLARIFICATION IN WRITING FROM THE PROJECT MANAGER.
SCHEMATIC PIPE ROUTING: THE PIPE ROUTING SHOWN ON THESE PLANS IS SCHEMATIC AND MAY REQUIRE FIELD ADJUSTMENTS BY THE CONTRACTOR. WHEN POSSIBLE, THE CONTRACTOR SHALL INSTALL PIPING OUTSIDE OF ROOTZONE OF SHRUBS AND TREES. WHEN POSSIBLE, THE CONTRACTOR SHALL INSTALL PIPING CLOSE TO CENTER OF MEDIAN SO AS TO ALLOW FOR POSSIBLE FUTURE ROAD WIDENING.
IRRIGATION SATELLITE: THE CONTRACTOR SHALL HAVE A RADIO SIGNAL STRENGTH SURVEY PERFORMED TO VERIFY PROPER RADIO COMMUNICATION FROM IRRINET "ACE" CONTROLLER LOCATION TO PROPOSED IRRINET "M" CONTROLLER LOCATION OR FROM IRRINET "ACE" LOCATION TO CENTRAL COMPUTER LOCATION. PRIOR TO THE INSTALLATION OF THE CONTROLLER, THE CONTRACTOR SHALL CONTACT: TIM CAVALIER (256-9530) FOR THIS SERVICE. THE CONTRACTOR SHALL BE RESPONSIBLE FOR ALL COSTS ASSOCIATED WITH THE RADIO SIGNAL STRENGTH SURVEY.
ROAD CROSSINGS: THE CONTRACTOR SHALL BORE ALL SLEEVE PIPE WHEN CROSSING PAVED SURFACES.
SPECIAL PLANTING NOTE: THE CONTRACTOR SHALL INSTALL ALL CRAPE MYRTLE AND ARISTOCRAT PEAR 10' FROM BACK OF CURB. THIS MAY EFFECT SOME BUBBLER LOCATIONS SHOWN ON PLAN.

REDRAWN FOR
RECORD PURPOSES
RECORD DRAWINGS

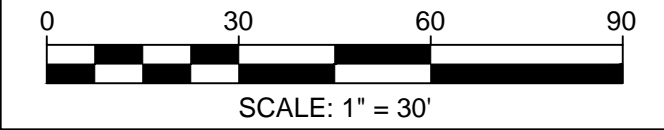
THIS RECORD DRAWING HAS BEEN PREPARED, BASED UPON INFORMATION FURNISHED BY THE CONTRACTOR. THE DESIGN PROFESSIONAL HAS NOT INDEPENDENTLY REVIEWED THE ACCURACY OF THE INFORMATION PROVIDED. THESE RECORD DRAWINGS ACCURATELY DEPICT THE FIELD CHANGES WHICH WERE REPORTED BY THE CONTRACTOR.



Mountain West GolfScapes, Inc.

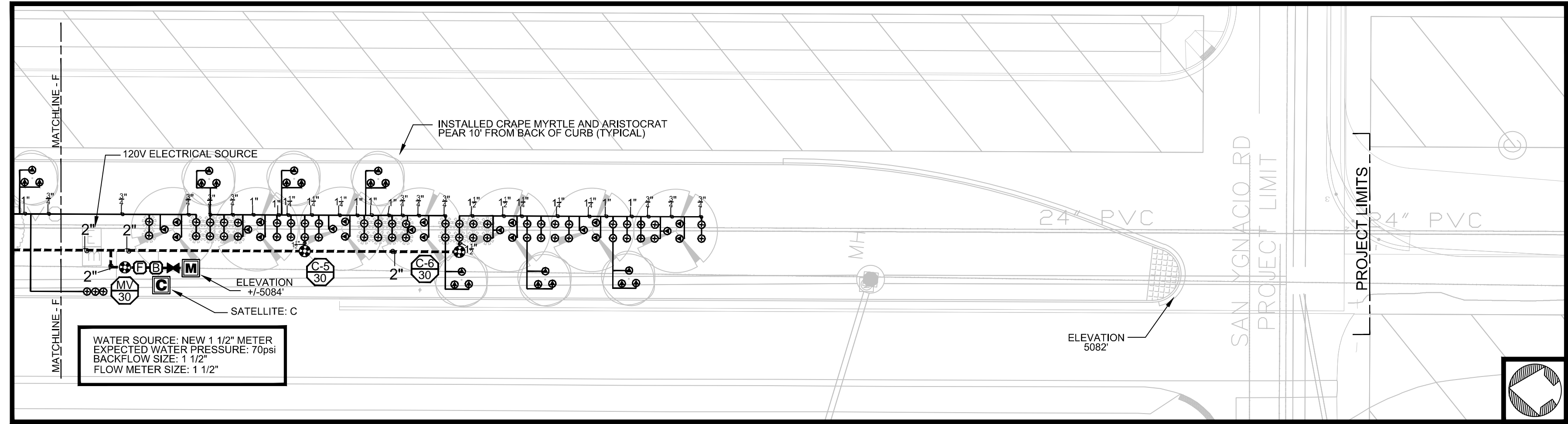
Irrigation Services LLC
Designers & Consultants

44 GOOD DRIVE BELEN, NM 87002
PHONE: (505) 861-1536
FAX: (505) 864-3212
EMAIL: info@IrrServices.com
WEB: IrrServices.com



CITY OF ALBUQUERQUE CAPITAL IMPLEMENTATION PROGRAM DEPARTMENT OF MUNICIPAL DEVELOPEMENT			
TITLE: PROTOTYPE MEDIAN & INTERSTATE LANDSCAPES FY09-B UNSER BLDV: CENTRAL AVE. to SAN YGNACIO RD. (WO #1) IRRIGATION SYSTEM AS-BUILT RECORDS 08/18/10			
Design Review Committee	City Engineer Approval	Last Design Update	MO/DA/YR 08/18/10
City Project No. 771402	Zone Map No. K-10, L-10	Sheet 2	Of 3

SURVEY INFORMATION		BENCHMARK		AS BUILT INFORMATION	
FIELD NOTES				CONTRACTOR: MOUNTAIN WEST GOLFSCAPES	
NO.	BY	DATE		WORK STAKED BY: FR. IS	DATE: 07-10
				INSPECTOR'S APPROVAL: JC	DATE: 07-10
				FIELD VERIFICATION BY: FR	DATE: 07-10
				DRAWING CORRECTED BY: FR. IS	DATE: 08-10
			MICRO-FILM INFORMATION		
			RECORDED BY		
			NO.		
			DATE:		



CITY OF ALBUQUERQUE CAPITAL IMPLEMENTATION PROGRAM DEPARTMENT OF MUNICIPAL DEVELOPEMENT													
TITLE: PROTOTYPE MEDIAN & INTERSTATE LANDSCAPES FY09-B UNSER BLVD: CENTRAL AVE. to SAN YGNACIO RD. (WO #1) IRRIGATION SYSTEM AS-BUILT RECORDS													
Design Review Committee		City Engineer Approval											
		Last Design Update											
		<table border="1" style="width: 100%; border-collapse: collapse;"> <tr> <td style="width: 50%; padding: 2px;">MO./DAY/YR.</td> <td style="width: 50%; padding: 2px;">MO./DAY/YR.</td> </tr> <tr> <td style="padding: 2px;">08/18/10</td> <td style="padding: 2px;"></td> </tr> <tr> <td style="padding: 2px;"></td> <td style="padding: 2px;"></td> </tr> <tr> <td style="padding: 2px;"></td> <td style="padding: 2px;"></td> </tr> <tr> <td style="padding: 2px;"></td> <td style="padding: 2px;"></td> </tr> </table>		MO./DAY/YR.	MO./DAY/YR.	08/18/10							
		MO./DAY/YR.	MO./DAY/YR.										
		08/18/10											
City Project No.		Zone Map No.											
771402		K-10, L-10											
		Sheet 3 Of 3											