

## IRRIGATION LEGEND

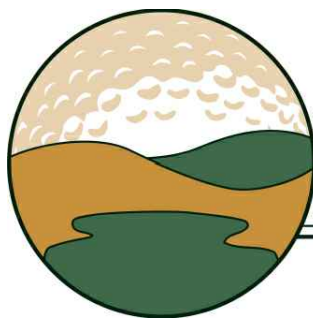
- RAINBIRD #1400 SERIES BUBBLER (SEE COA STANDARD DETAIL DRAWINGS: 2710, 2711, 2711.A & 2712)  
#1402 - 50 GPM  
#1404 - 1.0 GPM
- ELECTRIC VALVE; RAINBIRD #150-PEB 1 1/2" PLASTIC ELECTRIC VALVE WITH FLOW CONTROL (SEE COA STANDARD DETAIL DRAWING: 2703)
- ISOLATION VALVE ASSEMBLY (LINE SIZE) - SEE COA STANDARD DETAIL #2707
- FEBCO #825YA REDUCED PRESSURE BACKFLOW PREVENTER WITH MASTER VALVE ASSEMBLY INSTALLED IN "CLAY" COLORED HOTBOX "HOT ROK" HEATED AND INSULATED BACKFLOW DEVICE ENCLOSURE - SEE PLAN FOR BACKFLOW SIZE (SEE DETAIL DRAWING: C/4)
- MASTERMETER FLOW METER WITH ELECTRICAL OUTPUT REGISTER - 1 PULSE = 1 GALLON - SEE DRAWING FOR SIZE (SEE DETAIL DRAWING: C/4)
- CRISPEN #UL10.1 1" UNIVERSAL AIR RELEASE VALVE ASSEMBLY
- CITY WATER METER - SENSUS WATER METER (SEE COA STANDARD DETAIL DRAWING: 2362 OR 2363) SEE PLAN FOR WATER METER SIZE
- MOTOROLA IRRINET "M" CONTROLLER WITH STRONGBOX ENCLOSURE, KEYPAD AND DOMED ANTENNA. UNIT SHALL COMMUNICATE ON COA RADIO FREQUENCY. (SEE DETAIL DRAWING: B/4 & D/4) (12 STATION OUTPUT)
- MAINLINE PIPING - SCH.40 PVC SOLVENT WELD PIPE (SEE PLAN FOR SIZE)
- LATERAL PIPING - SCH.40 PVC SOLVENT WELD (SIZE INDICATED ON PLAN - UNSIZED PIPE IS 3/4")
- SLEEVE PIPING - CLASS 200 PVC (TWO SIZES LARGER THAN PIPE TO BE SLEEVED)
- 120 VOLT ELECTRICAL POWER WIRE ROUTE
- VALVE ID NUMBER
- FLOW IN GALLONS PER MINUTE

## IRRIGATION NOTES

- WATER PRESSURE:**  
THE WATER PRESSURE AT THIS SITE HAS BEEN REPORTED AND NOTED ON THE CONSTRUCTION PLAN. THE CONTRACTOR SHALL VERIFY WATER PRESSURE AT THE NEAREST AVAILABLE FIRE HYDRANT PRIOR TO BEGINNING INSTALLATION OF IRRIGATION SYSTEM.
- SPECIFICATIONS AND DETAIL DRAWINGS:**  
THE CONTRACTOR SHALL REFER TO THE CITY OF ALBUQUERQUE'S STANDARD SPECIFICATIONS AND DETAIL DRAWINGS FOR IRRIGATION CONSTRUCTION. IN THE EVENT OF A CONFLICT BETWEEN SPECIFICATIONS AND IRRIGATION DESIGN, THE CONTRACTOR SHALL NOTIFY THE PROJECT MANAGER IN WRITING. THE CONTRACTOR SHALL NOT PROCEED WITH INSTALLATION OF CONFLICTING IRRIGATION COMPONENTS UNTIL HE RECEIVES CLARIFICATION IN WRITING FROM THE PROJECT MANAGER.
- SCHEMATIC PIPE ROUTING:**  
THE PIPE ROUTING SHOWN ON THESE PLANS IS SCHEMATIC AND MAY REQUIRE FIELD ADJUSTMENTS BY THE CONTRACTOR. WHEN POSSIBLE, THE CONTRACTOR SHALL INSTALL PIPING OUTSIDE OF ROOTZONE OF SHRUBS AND TREES. WHEN POSSIBLE, THE CONTRACTOR SHALL INSTALL PIPING CLOSE TO CENTER OF MEDIAN SO AS TO ALLOW FOR POSSIBLE FUTURE ROAD WIDENING.
- IRRIGATION SATELLITE:**  
THE CONTRACTOR SHALL HAVE A RADIO SIGNAL STRENGTH SURVEY PERFORMED TO VERIFY PROPER RADIO COMMUNICATION FROM IRRINET "ACE" CONTROLLER LOCATION TO PROPOSED IRRINET "M" CONTROLLER LOCATION OR FROM IRRINET "ACE" LOCATION TO CENTRAL COMPUTER LOCATION, PRIOR TO THE INSTALLATION OF THE CONTROLLER. THE CONTRACTOR SHALL CONTACT: TIM CAVALIER (250-9530) FOR THIS SERVICE. THE CONTRACTOR SHALL BE RESPONSIBLE FOR ALL COSTS ASSOCIATED WITH THE RADIO SIGNAL STRENGTH SURVEY.
- ROAD CROSSINGS:**  
THE CONTRACTOR SHALL BORE ALL SLEEVE PIPE WHEN CROSSING PAVED SURFACES.
- BUBBLER CHECK VALVES:**  
IT IS EXPECTED THAT THERE MAY BE LOW-HEAD DRAINAGE AT SOME OF THE BUBBLERS AT THE LOWER ELEVATIONS. IF PROBLEMATIC CONDITIONS APPEAR, THE CONTRACTOR SHALL INSTALL A RAINBIRD #ACV-050 CHECK VALVE ON ALL EFFECTED BUBBLERS. FOR BID OR PRICING PURPOSES THE CONTRACTOR SHALL ASSUME THE INSTALLATION OF CHECK VALVES ON ALL BUBBLERS AND INCLUDE THESE COSTS IN HIS BID.

## REDRAWN FOR RECORD PURPOSES RECORD DRAWINGS

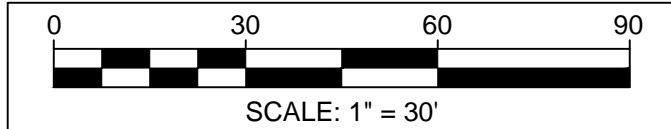
THIS RECORD DRAWING HAS BEEN PREPARED, BASED UPON INFORMATION FURNISHED BY THE CONTRACTOR. THE DESIGN PROFESSIONAL HAS NOT INDEPENDENTLY REVIEWED THE ACCURACY OF THE INFORMATION PROVIDED. THESE RECORD DRAWINGS ACCURATELY DEPICT THE FIELD CHANGES WHICH WERE REPORTED BY THE CONTRACTOR.



Mountain West GolfScapes, Inc.

**Irrigation Services LLC**  
Designers & Consultants

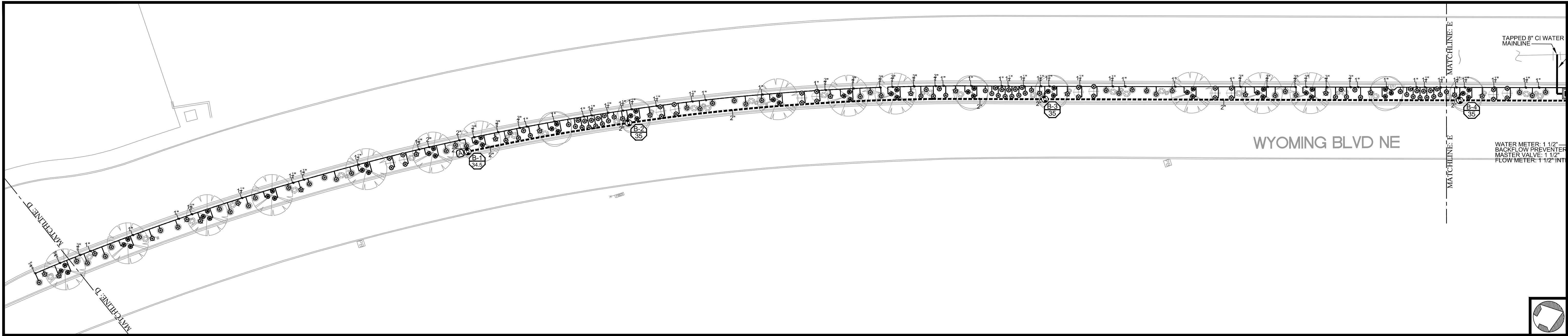
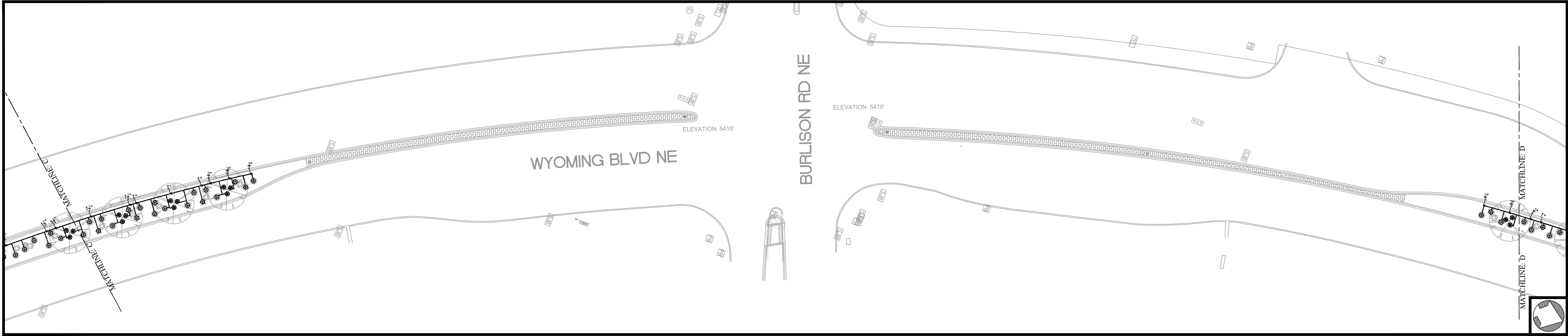
44 GOOD DRIVE BELEN, NM 87002  
PHONE: (505) 861-1536  
FAX: (505) 864-3212  
EMAIL: info@IrrServices.com  
WEB: IrrServices.com



CITY OF ALBUQUERQUE CAPITAL IMPLEMENTATION PROGRAM DEPARTMENT OF MUNICIPAL DEVELOPEMENT			
TITLE: PROTOTYPE MEDIAN & INTERSTATE LANDSCAPES FY09-B WYOMING BLVD: ACADEMY TO SAN ANTONIO (WO #4) IRRIGATION SYSTEM AS-BUILT 09/28/10			
Design Review Committee	City Engineer Approval	NO. DATE	NO. DATE
		09/28/10	
City Project No. 771404	Zone Map No. E-19	Sheet 1	Of 3

SURVEY INFORMATION		BENCHMARK		AS BUILT INFORMATION	
NO.	BY	DATE	NO.	CONTRACTOR: MOUNTAIN WEST GOLFSCAPES	CONTRACTOR: MOUNTAIN WEST GOLFSCAPES
				WORK STAKED BY: IS	DATE: 08/10
				INSPECTOR'S APPROVAL: JC	DATE: 08/10
				FIELD VERIFICATION BY: BN	DATE: 08/10
				DRAWING CORRECTED BY: IS	DATE: 08/10
				MICRO-FILM INFORMATION	
				RECORDED BY:	DATE:
				NO.	NO.





### IRRIGATION LEGEND

- RAINBIRD #1400 SERIES BUBBLER (SEE COA STANDARD DETAIL DRAWINGS: 2710, 2711, 2711-A & 2712)  
#1402 - .50 GPM  
#1404 - 1.0 GPM
- ELECTRIC VALVE: RAINBIRD #150-PEB 1 1/2" PLASTIC ELECTRIC VALVE WITH FLOW CONTROL (SEE COA STANDARD DETAIL DRAWING: 2703)
- ISOLATION VALVE ASSEMBLY (LINE SIZE) - SEE COA STANDARD DETAIL #2707
- FEBCO #825YA REDUCED PRESSURE BACKFLOW PREVENTER WITH MASTER VALVE ASSEMBLY INSTALLED IN "CLAY" COLORED HOTBOX "HOT ROK" HEATED AND INSULATED BACKFLOW DEVICE ENCLOSURE - SEE PLAN FOR BACKFLOW SIZE (SEE DETAIL DRAWING: C/4)
- MASTERMETER FLOW METER WITH ELECTRICAL OUTPUT REGISTER - 1 PULSE = 1 GALLON - SEE DRAWING FOR SIZE (SEE DETAIL DRAWING: C/4)
- CRISPEN #UL10.1 1" UNIVERSAL AIR RELEASE VALVE ASSEMBLY
- CITY WATER METER - SENSUS WATER METER (SEE COA STANDARD DETAIL DRAWING: 2362 OR 2363) SEE PLAN FOR WATER METER SIZE
- MOTOROLA IRRINET "M" CONTROLLER WITH STRONGBOX ENCLOSURE, KEYPAD AND DOMED ANTENNA. UNIT SHALL COMMUNICATE ON COA RADIO FREQUENCY. (SEE DETAIL DRAWING: B/4 & D/4) (1/2 STATION OUTPUT)
- MAINLINE PIPING - SCH.40 PVC SOLVENT WELD PIPE (SEE PLAN FOR SIZE)
- LATERAL PIPING - SCH.40 PVC SOLVENT WELD (SIZE INDICATED ON PLAN - UNSIZED PIPE IS 3/4")
- SLEEVE PIPING - CLASS 200 PVC (TWO SIZES LARGER THAN PIPE TO BE SLEEVED)
- 120 VOLT ELECTRICAL POWER WIRE ROUTE
- VALVE ID NUMBER
- FLOW IN GALLONS PER MINUTE

### IRRIGATION NOTES

**WATER PRESSURE:**  
THE WATER PRESSURE AT THIS SITE HAS BEEN REPORTED AND NOTED ON THE CONSTRUCTION PLAN. THE CONTRACTOR SHALL VERIFY WATER PRESSURE AT THE NEAREST AVAILABLE FIRE HYDRANT PRIOR TO BEGINNING INSTALLATION OF IRRIGATION SYSTEM.

**SPECIFICATIONS AND DETAIL DRAWINGS:**  
THE CONTRACTOR SHALL REFER TO THE CITY OF ALBUQUERQUE'S STANDARD SPECIFICATIONS AND DETAIL DRAWINGS FOR IRRIGATION CONSTRUCTION. IN THE EVENT OF A CONFLICT BETWEEN SPECIFICATIONS AND IRRIGATION DESIGN, THE CONTRACTOR SHALL NOTIFY THE PROJECT MANAGER IN WRITING. THE CONTRACTOR SHALL NOT PROCEED WITH INSTALLATION OF CONFLICTING IRRIGATION COMPONENTS UNTIL HE RECEIVES CLARIFICATION IN WRITING FROM THE PROJECT MANAGER.

**SCHEMATIC PIPE ROUTING:**  
THE PIPE ROUTING SHOWN ON THESE PLANS IS SCHEMATIC AND MAY REQUIRE FIELD ADJUSTMENTS BY THE CONTRACTOR. WHEN POSSIBLE, THE CONTRACTOR SHALL INSTALL PIPING OUTSIDE OF ROOTZONE OF SHRUBS AND TREES. WHEN POSSIBLE, THE CONTRACTOR SHALL INSTALL PIPING CLOSE TO CENTER OF MEDIAN SO AS TO ALLOW FOR POSSIBLE FUTURE ROAD WIDENING.

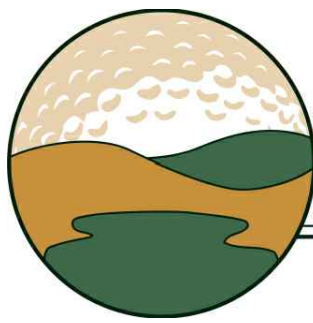
**IRRIGATION SATELLITE:**  
THE CONTRACTOR SHALL HAVE A RADIO SIGNAL STRENGTH SURVEY PERFORMED TO VERIFY PROPER RADIO COMMUNICATION FROM IRRINET "ACE" CONTROLLER LOCATION TO PROPOSED IRRINET "M" CONTROLLER LOCATION OR FROM IRRINET "ACE" LOCATION TO CENTRAL COMPUTER LOCATION. PRIOR TO THE INSTALLATION OF THE CONTROLLER, THE CONTRACTOR SHALL CONTACT: TIM CAVALIER (250-9530) FOR THIS SERVICE. THE CONTRACTOR SHALL BE RESPONSIBLE FOR ALL COSTS ASSOCIATED WITH THE RADIO SIGNAL STRENGTH SURVEY.

**ROAD CROSSINGS:**  
THE CONTRACTOR SHALL BORE ALL SLEEVE PIPE WHEN CROSSING PAVED SURFACES.

**BUBBLER CHECK VALVES:**  
IT IS EXPECTED THAT THERE MAY BE LOW-HEAD DRAINAGE AT SOME OF THE BUBBLERS AT THE LOWER ELEVATIONS. IF PROBLEMATIC CONDITIONS APPEAR, THE CONTRACTOR SHALL INSTALL A RAINBIRD #ACV-050 CHECK VALVE ON ALL EFFECTED BUBBLERS. FOR BID OR PRICING PURPOSES THE CONTRACTOR SHALL ASSUME THE INSTALLATION OF CHECK VALVES ON ALL BUBBLERS AND INCLUDE THESE COSTS IN HIS BID.

### REDRAWN FOR RECORD PURPOSES RECORD DRAWINGS

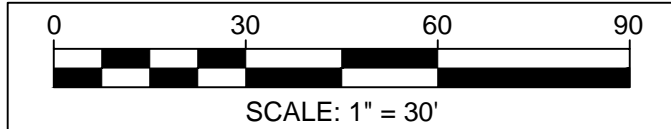
THIS RECORD DRAWING HAS BEEN PREPARED, BASED UPON INFORMATION FURNISHED BY THE CONTRACTOR. THE DESIGN PROFESSIONAL HAS NOT INDEPENDENTLY REVIEWED THE ACCURACY OF THE INFORMATION PROVIDED. THESE RECORD DRAWINGS ACCURATELY DEPICT THE FIELD CHANGES WHICH WERE REPORTED BY THE CONTRACTOR.



Mountain West GolfScapes, Inc.

**Irrigation Services LLC**  
Designers & Consultants

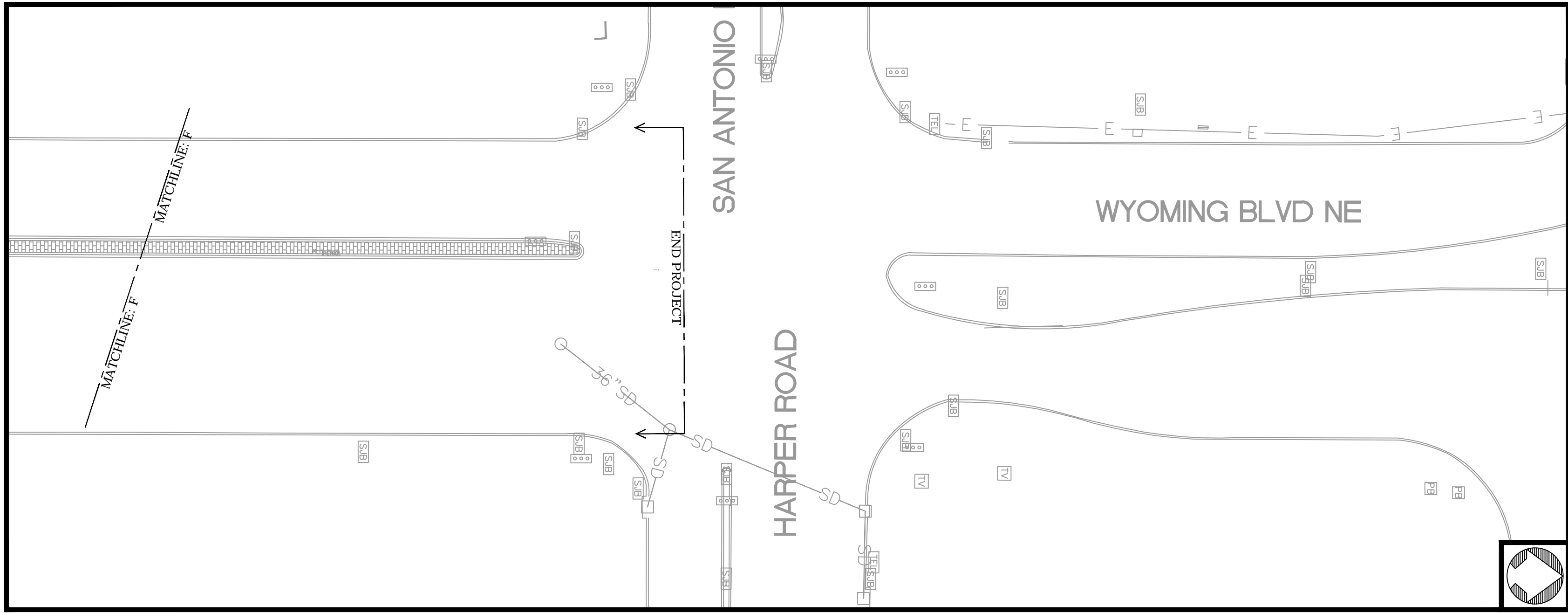
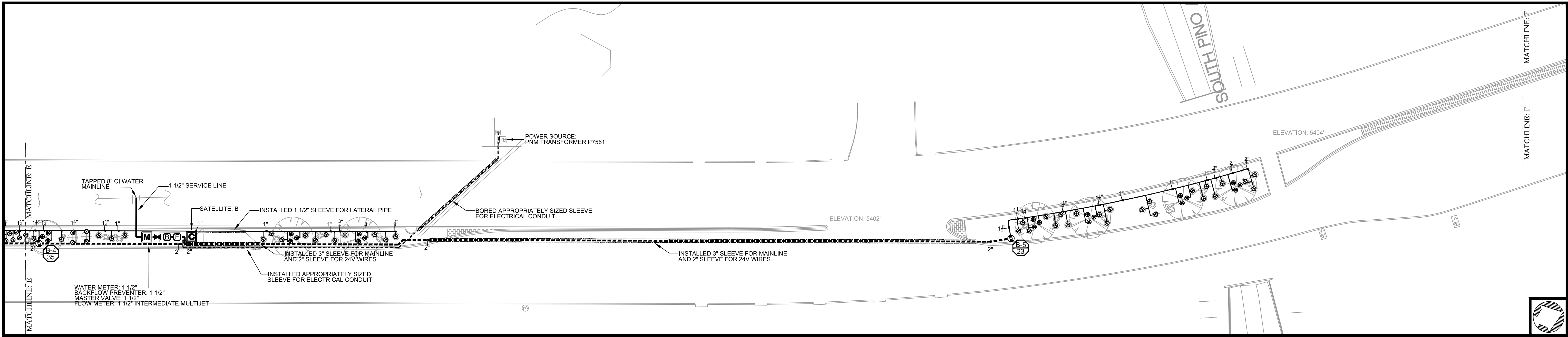
44 GOOD DRIVE BELEN, NM 87002  
PHONE: (505) 861-1536  
FAX: (505) 864-3212  
EMAIL: info@IrrServices.com  
WEB: IrrServices.com



CITY OF ALBUQUERQUE CAPITAL IMPLEMENTATION PROGRAM DEPARTMENT OF MUNICIPAL DEVELOPEMENT			
TITLE: PROTOTYPE MEDIAN & INTERSTATE LANDSCAPES FY09-B WYOMING BLVD: ACADEMY TO SAN ANTONIO (WO #4) IRRIGATION SYSTEM AS-BUILT 09/28/10			
Design Review Committee	City Engineer Approval	MOJ-DAY/STR 09/28/10	MOJ-DAY/STR
Last Design Update			
City Project No. 771404		Zone Map No. E-19	Sheet 2 Of 3

SURVEY INFORMATION		BENCHMARK		AS BUILT INFORMATION	
FIELD NOTES				CONTRACTOR: MOUNTAIN WEST GOLFSCAPES	
NO.	BY	DATE		WORK STAKED BY: IS	DATE: 08/10
				INSPECTOR'S APPROVAL: JC	DATE: 08/10
				FIELD VERIFICATION BY: BN	DATE: 08/10
				DRAWING CORRECTED BY: IS	DATE: 08/10
				MICRO-FILM INFORMATION	
				RECORDED BY:	DATE:
				NO.	





## IRRIGATION LEGEND

- RAINBIRD #1400 SERIES BUBBLER (SEE COA STANDARD DETAIL DRAWINGS: 2710, 2711, 2711-A & 2712)  
#1402 - .50 GPM  
#1404 - 1.0 GPM
- ELECTRIC VALVE: RAINBIRD #150-PEB 1 1/2" PLASTIC ELECTRIC VALVE WITH FLOW CONTROL (SEE COA STANDARD DETAIL DRAWING: 2703)
- ISOLATION VALVE ASSEMBLY (LINE SIZE) - SEE COA STANDARD DETAIL #2707
- FEBCO #825YA REDUCED PRESSURE BACKFLOW PREVENTER WITH MASTER VALVE ASSEMBLY INSTALLED IN "CLAY" COLORED HOTBOX "HOT ROK" HEATED AND INSULATED BACKFLOW DEVICE ENCLOSURE - SEE PLAN FOR BACKFLOW SIZE (SEE DETAIL DRAWING: C/4)
- MASTERMETER FLOW METER WITH ELECTRICAL OUTPUT REGISTER - 1 PULSE = 1 GALLON - SEE DRAWING FOR SIZE (SEE DETAIL DRAWING: C/4)
- CRISPEN #UL10.1 1" UNIVERSAL AIR RELEASE VALVE ASSEMBLY
- CITY WATER METER - SENSUS WATER METER (SEE COA STANDARD DETAIL DRAWING: 2362 OR 2363) SEE PLAN FOR WATER METER SIZE
- MOTOROLA IRRINET "M" CONTROLLER WITH STRONGBOX ENCLOSURE, KEYPAD AND DOMED ANTENNA. UNIT SHALL COMMUNICATE ON COA RADIO FREQUENCY. (SEE DETAIL DRAWING: B/4 & D/4) (1/2 STATION OUTPUT)
- MAINLINE PIPING - SCH.40 PVC SOLVENT WELD PIPE (SEE PLAN FOR SIZE)
- LATERAL PIPING - SCH.40 PVC SOLVENT WELD (SIZE INDICATED ON PLAN - UNSIZED PIPE IS 3/4")
- SLEEVE PIPING - CLASS 200 PVC (TWO SIZES LARGER THAN PIPE TO BE SLEEVED)
- 120 VOLT ELECTRICAL POWER WIRE ROUTE
- VALVE ID NUMBER
- FLOW IN GALLONS PER MINUTE

## IRRIGATION NOTES

**WATER PRESSURE:**  
THE WATER PRESSURE AT THIS SITE HAS BEEN REPORTED AND NOTED ON THE CONSTRUCTION PLAN. THE CONTRACTOR SHALL VERIFY WATER PRESSURE AT THE NEAREST AVAILABLE FIRE HYDRANT PRIOR TO BEGINNING INSTALLATION OF IRRIGATION SYSTEM.

**SPECIFICATIONS AND DETAIL DRAWINGS:**  
THE CONTRACTOR SHALL REFER TO THE CITY OF ALBUQUERQUE'S STANDARD SPECIFICATIONS AND DETAIL DRAWINGS FOR IRRIGATION CONSTRUCTION. IN THE EVENT OF A CONFLICT BETWEEN SPECIFICATIONS AND IRRIGATION DESIGN, THE CONTRACTOR SHALL NOTIFY THE PROJECT MANAGER IN WRITING. THE CONTRACTOR SHALL NOT PROCEED WITH INSTALLATION OF CONFLICTING IRRIGATION COMPONENTS UNTIL HE RECEIVES CLARIFICATION IN WRITING FROM THE PROJECT MANAGER.

**SCHEMATIC PIPE ROUTING:**  
THE PIPE ROUTING SHOWN ON THESE PLANS IS SCHEMATIC AND MAY REQUIRE FIELD ADJUSTMENTS BY THE CONTRACTOR. WHEN POSSIBLE, THE CONTRACTOR SHALL INSTALL PIPING OUTSIDE OF ROOTZONE OF SHRUBS AND TREES. WHEN POSSIBLE, THE CONTRACTOR SHALL INSTALL PIPING CLOSE TO CENTER OF MEDIAN SO AS TO ALLOW FOR POSSIBLE FUTURE ROAD WIDENING.

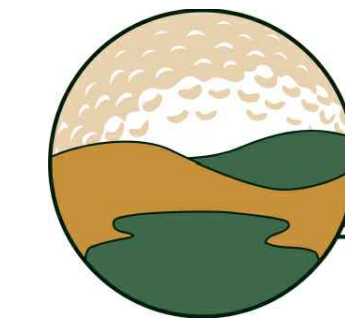
**IRRIGATION SATELLITE:**  
THE CONTRACTOR SHALL HAVE A RADIO SIGNAL STRENGTH SURVEY PERFORMED TO VERIFY PROPER RADIO COMMUNICATION FROM IRRINET "ACE" CONTROLLER LOCATION TO PROPOSED IRRINET "M" CONTROLLER LOCATION OR FROM IRRINET "ACE" LOCATION TO CENTRAL COMPUTER LOCATION. PRIOR TO THE INSTALLATION OF THE CONTROLLER, THE CONTRACTOR SHALL CONTACT: TIM CAVALIER (250-9530) FOR THIS SERVICE. THE CONTRACTOR SHALL BE RESPONSIBLE FOR ALL COSTS ASSOCIATED WITH THE RADIO SIGNAL STRENGTH SURVEY.

**ROAD CROSSINGS:**  
THE CONTRACTOR SHALL BORE ALL SLEEVE PIPE WHEN CROSSING PAVED SURFACES.

**BUBBLER CHECK VALVES:**  
IT IS EXPECTED THAT THERE MAY BE LOW-HEAD DRAINAGE AT SOME OF THE BUBBLERS AT THE LOWER ELEVATIONS. IF PROBLEMATIC CONDITIONS APPEAR, THE CONTRACTOR SHALL INSTALL A RAINBIRD #ACV-050 CHECK VALVE ON ALL EFFECTED BUBBLERS. FOR BID OR PRICING PURPOSES THE CONTRACTOR SHALL ASSUME THE INSTALLATION OF CHECK VALVES ON ALL BUBBLERS AND INCLUDE THESE COSTS IN HIS BID.

## REDRAWN FOR RECORD PURPOSES RECORD DRAWINGS

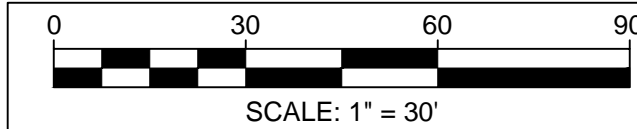
THIS RECORD DRAWING HAS BEEN PREPARED, BASED UPON INFORMATION FURNISHED BY THE CONTRACTOR. THE DESIGN PROFESSIONAL HAS NOT INDEPENDENTLY REVIEWED THE ACCURACY OF THE INFORMATION PROVIDED. THESE RECORD DRAWINGS ACCURATELY DEPICT THE FIELD CHANGES WHICH WERE REPORTED BY THE CONTRACTOR.



Mountain West GolfScapes, Inc.

**Irrigation Services LLC**  
Designers & Consultants

44 GOOD DRIVE BELEN, NM 87002  
PHONE: (505) 861-1536  
FAX: (505) 864-3212  
EMAIL: info@IrrServices.com  
WEB: IrrServices.com



SURVEY INFORMATION		BENCHMARK		AS BUILT INFORMATION	
NO.	BY	DATE	NO.	DATE	CONTRACTOR: MOUNTAIN WEST GOLFSCAPES
					WORK STAKED BY: IS DATE: 08/10
					INSPECTOR'S APPROVAL: JC DATE: 08/10
					FIELD VERIFICATION BY: BN DATE: 08/10
					DRAWING CORRECTED BY: IS DATE: 08/10
					MICRO-FILM INFORMATION
					RECORDED BY: NO. DATE:

CITY OF ALBUQUERQUE CAPITAL IMPLEMENTATION PROGRAM DEPARTMENT OF MUNICIPAL DEVELOPEMENT			
TITLE: PROTOTYPE MEDIAN & INTERSTATE LANDSCAPES FY09-B WYOMING BLVD: ACADEMY TO SAN ANTONIO (WO #4) IRRIGATION SYSTEM AS-BUILT		09/28/10	
Design Review Committee	City Engineer Approval	NO. DATE: 09/28/10	NO. DATE: 09/28/10
Last Design Update			
City Project No. 771404	Zone Map No. E-19	Sheet 3	Of 3