

IRRIGATION GENERAL NOTES

- CONTRACTOR SHALL FURNISH ALL LABOR, MATERIALS AND EQUIPMENT NECESSARY TO CONSTRUCT PROPOSED IRRIGATION SYSTEM IN ACCORDANCE WITH PLANS, WRITTEN SPECIFICATIONS AND DETAILS.
- THIS SYSTEM WAS DESIGNED AT A MINIMUM STATIC PRESSURE OF 70 PSI AT THE POINT OF CONNECTION. CONTRACTOR SHALL VERIFY ACTUAL PSI AND DELIVER RESULTS TO LANDSCAPE ARCHITECT PRIOR TO CONSTRUCTION. IN THE EVENT THE ACTUAL PSI IS LESS THAN 70 PSI THE CONTRACTOR SHALL RECEIVE DIRECTION FROM LANDSCAPE ARCHITECT REGARDING DESIGN MODIFICATIONS IF NECESSARY.
- ALL VALVE BOXES SHALL BE TAN WITH TAN BOLT-DOWN LIDS.
- CONTRACTOR IS REQUIRED TO APPLY FOR TAPPING PERMITS FROM THE CITY OF ALBUQUERQUE FOR EACH WATER LINE TAP SHOWN ON THE PLANS. CONTACT ANTHONY MONTOYA AT (505) 924-3987.
- IRRIGATION MAIN AND LATERAL LINES ARE SHOWN DIAGRAMMATICALLY. ALL LINES SHALL BE INSTALLED A MINIMUM OF 10' FROM ANY EXISTING BRIDGE COLUMN OR HIGH MAST LIGHT UNLESS OTHERWISE NOTED. MAIN LINES SHALL BE INSTALLED A MIN. 4'-0" CLEAR OF POST AND CABLE BARRIER FOOTINGS.
- AIR RELIEF VALVE LOCATION IS SHOWN SCHEMATICALLY ON THE PLAN AT APPARENT HIGH POINTS IN ELEVATION. CONTRACTOR SHALL SURVEY FINAL LOCATIONS OF AIR RELIEF VALVE PRIOR TO INSTALLATION TO ENSURE IT IS AT ACTUAL HIGH POINT.
- BUBBLERS ARE SHOWN DIRECTLY ON TOP OF SHRUBS AND TREES FOR CLARITY ONLY. BUBBLERS SHALL BE LOCATED PER DETAIL A3/46 FOR SHRUBS AND DETAILS A3/46 AND A4/46 FOR TREES.
- HUNTER PCB SERIES PRESSURE COMPENSATING BUBBLERS AND TORO FB-FC SERIES PRESSURE COMPENSATING BUBBLERS, OR APPROVED EQUAL, ARE ACCEPTABLE BUBBLER ALTERNATES.
- HUNTER ICV-A5 SERIES AUTOMATIC VALVE AND WEATHERMATIC 11000R SERIES AUTOMATIC VALVE, OR APPROVED EQUAL, ARE ACCEPTABLE REMOTE CONTROL AND MASTER VALVE ALTERNATES.
- VALVE-MATIC MODEL 151 AIR RELEASE VALVE, AND APCO MODEL 142 AIR RELEASE VALVE, OR APPROVED EQUAL, ARE ACCEPTABLE AIR RELEASE VALVE ALTERNATES.
- PRIOR TO FINAL PROJECT ACCEPTANCE THE CONTRACTOR SHALL COMPLETE THE FOLLOWING:
 - INSTALL ONE CONTROLLER CHART IN EACH CONTROLLER ENCLOSURE. SUBMIT TWO CONTROLLER CHARTS FOR EACH CONTROLLER TO PARK MANAGEMENT.
 - HAVE BACKFLOW PREVENTERS TESTED, INSPECTED AND TAGGED WITH APPROVAL. SUBMIT TEST REPORT TO OWNER.
 - PERFORM AN EARTH GROUND RESISTANCE TEST ON THE IRRIGATION CONTROLLERS AND SUBMIT REPORT TO OWNER.
 - PROVIDE A STATEMENT SHOWING THAT THE WATER BILL FOR THE PROJECT HAS BEEN PAID IN FULL BY THE CONTRACTOR.
 - PROVIDE A BILLING STATEMENT FROM THE ELECTRICAL COMPANY SHOWING THAT THE ELECTRIC BILL FOR THE PROJECT HAS BEEN PAID IN FULL BY THE CONTRACTOR AND TRANSFERRED TO THE CITY.
 - SUBMIT RECORD (AS-BUILT) DRAWINGS IN AUTOCAD (DWG) FORMAT (TWO ELECTRONIC COPIES ON CD AND ONE PAPER COPY) IN ACCORDANCE WITH THE C.O.A. D.P.M. CHAPTER 27.
- INCLUDE SQUARE FOOTAGE OF PROJECT.
- INCLUDE LIST OF PLANTS INSTALLED AND QUANTITY OF EACH.
- INCLUDE WATER METER ADDRESS.
- INCLUDE ANY EASEMENTS THAT MAY HAVE BEEN CREATED FOR THE PROJECT (FOR IRRIGATION COMPONENTS OUTSIDE THE RIGHT-OF-WAY).
- PROVIDE IRRIGATION COMPONENT KEYS TO OWNER.
- ITS LINE LOCATIONS AND DEPTHS ARE APPROXIMATE. CONTRACTOR SHALL VERIFY LOCATION, PRESERVE AND PROTECT ITS LINES THROUGHOUT CONSTRUCTION OPERATIONS. CONTRACTOR SHALL COORDINATE WITH NMDOT FOR VERIFICATION OF LINE LOCATION AND DEPTH. ITS DAMAGED DUE TO CONSTRUCTION OPERATIONS SHALL BE REPAIRED OR REPLACED AT NO ADDITIONAL COST TO THE OWNER.
- PRICKLY PEAR CACTI AND FAXON YUCCA SHALL BE HAND-WATERED AT INSTALLATION. BUBBLERS SHALL NOT BE INSTALLED AT PRICKLY PEAR CACTI NOR FAXON YUCCA. SEE PLANTING PLAN FOR LOCATION OF PRICKLY PEAR CACTI.
- FEBCO PRV-1 LARGE DIAMETER PRESSURE REDUCING VALVE AND WILKINS MODEL 500 PRESSURE REDUCING VALVE, OR APPROVED EQUAL, ARE ACCEPTABLE PRESSURE REDUCING VALVE ALTERNATES.
- CONTRACTOR SHALL PROVIDE POWER FROM ELECTRICAL PANEL TO IRRIGATION CONTROLLER, BACKFLOW PREVENTER ENCLOSURE, AND PUMP. ALL WORK AND MATERIALS SHALL MEET LOCAL CODES AND THE NATIONAL ELECTRIC CODE (N.E.C.). SEE SHEET 47 OF 58.

I-40 MEDIAN MATCH LINE 'F' TO MATCH LINE 'G'

IRRIGATION LEGEND

- W M EXISTING 10" PVC CITY WATER MAIN. CONTRACTOR SHALL VERIFY LOCATION. WATER METER, SIZE 2". LOCATION IS SCHEMATIC, CONTRACTOR SHALL VERIFY LOCATION. INSTALL PER COA DRAWINGS 2361, 2363 AND 2367.
- BOREING, SEE IRRIGATION KEYED NOTE #2.
- COPPER SERVICE LINE BETWEEN TAP AND METER, SIZE 2".
- IRRIGATION MAIN LINE. CLASS 200, BELL-END SOLVENT WELD PVC, SIZE 2 1/2", UNLESS OTHERWISE NOTED ON PLAN. DEPTH OF BURY 28" FOR CONTINUOUS PRESSURE MAIN LINE AND 18" FOR NON-CONTINUOUS PRESSURE MAIN LINE. THRUST BLOCKS SHALL BE INSTALLED AT ALL 90 DEG. ANGLES AND TIES ON THE MAIN LINE PER C.O.A. DRAWING 2704.
- 2 1/2" HDPE PIPE (SDR 11) AND 2" HDPE SLEEVE PIPE (SDR 13.5 WIRE CONDUIT) FOR FUTURE EXPANSION. DEPTH OF BURY 18". INSTALL WIRE CONDUIT FOR CONTROL WIRE IN MAIN LINE TRENCH WITH PULL BOXES EVERY 200 LF. SEE DETAIL C1/45.
- LATERAL PIPING, SCH. 40, BELL END, SOLVENT WELD PVC. SIZE AS SHOWN ON PLAN. DEPTH OF BURY, 18". LATERAL PIPE CONVEYING LESS THAN 5 GPM SHALL BE 3/4".
- △ 1" CRISPIN AIR RELIEF VALVE, MODEL #AL10. INSTALL PER C.O.A. DRAWING 2705 (EXCEPTION - CONSTRUCTION NOTE B SHALL BE REVISED TO READ: 17"x30"x18" HIGH VALVE BOX WITH ABS BOLT DOWN COVER). SEE IRRIGATION GENERAL NOTES #6 AND #10.
- △ MANUAL ISOLATION VALVE WITH UNIONS, SAME SIZE AS MAINLINE. INSTALL PER C.O.A. DRAWING #2707.
- △ BACKFLOW PREVENTER, FEBCO 825YA, 2" REDUCED PRESSURE PRINCIPLE BACKFLOW PREVENTER IN HOT TAP MODE. SEE DETAIL B1/46.
- BP BOOSTER PUMP. CONTRACTOR SHALL FURNISH AND INSTALL AN INLINE MULTISTAGE BOOSTER PUMP WITH STAINLESS STEEL SUCTION AND DISCHARGE MANIFOLDS COMPLETE WITH ISOLATION VALVES, CHECK VALVE, PRESSURE GAUGES, PRESSURE TRANSDUCERS AND 4.4 GALLON PRESSURE TANK. PUMP TO PROVIDE A 55 PSI BOOST GIVEN INLET PRESSURE OF 50 PSI AND OUTLET PRESSURE OF 115 IN A HEATED WITH EXHAUST FAN, TEMPERATURE CONTROLLED AND INSULATED ENCLOSURE (MIN. INSIDE 45'L X 35" W X 35"H). BOOSTER PUMP SHALL HAVE VARIABLE FREQUENCY DRIVE, OPERATE ON A SINGLE PHASE INCOMING POWER TO CONVERT TO THREE PHASE OUTPUT TO PUMP MOTOR AND OPERATE WITH A MAX. FLOW OF 50 GPM AND A MIN. FLOW OF 30 GPM. BOOSTER PUMP SHALL BE LOCATED IN A SEPARATE, EXTERIOR NEMA 3R RATED, LOCKING ENCLOSURE COMPLETE WITH COOLING PACKAGE W/ADJ. THERMOSTAT, DISCONNECT SWITCH, FUSE BLOCK W/FUSES, CIRCUIT TRANSFORMER AND H-O-A SWITCH, UL 508 LISTED.
- ⊞ MASTER VALVE AND FLOW METER ASSEMBLY, BERMAID IR-910-MO-RX WITH 1-GAL PULSE RATE, SIZE 2". SEE DETAIL B1/46.
- PRV 2" PRESSURE REGULATOR, WATTS SERIES U5 IN AN 17"x30"x18" HIGH VALVE BOX WITH ABS BOLT DOWN FLUSH COVER WITH EXTENSIONS AS REQUIRED. SEE IRRIGATION GENERAL NOTE #14.
- ⊞ REMOTE CONTROL VALVE ASSEMBLY, RAINBIRD PEB SERIES, PLASTIC BODY 24-VOLT AUTOMATIC VALVE, SIZE AS SHOWN ON PLAN. INSTALL PER C.O.A. DRAWING #2703. SEE IRRIGATION GENERAL NOTE #9.
- ⊞ SOLVENT WELD CAP, SCH. 40 PVC, LINE SIZE.
- ⊞ PRESSURE COMPENSATING BUBBLER ASSEMBLIES, RAINBIRD 1400 SERIES (OR EQUAL - SEE IRRIGATION GENERAL NOTE #8) AS FOLLOWS:

MODEL#	TOTAL GPM	PSI	INSTALL PER:
1 ⊞ 1401/ EACH PERENNIAL	.25 (1⊞.25 GPM BUB.)	30	DETAIL A3/46
1 ⊞ 1402/ EACH SHRUB	.5 (1⊞.50 GPM BUB.)	30	DETAIL A3/46
3 ⊞ 1404/ EACH TREE	3.00 (3⊞ 1 GPM BUB.)	30	DETAILS A4/46 AND A3/46
- ⊞ PULL BOX. INSTALL AT 200' INTERVALS ALONG WIRE CONDUIT FOR FUTURE EXPANSION PER DETAIL C1/45.
- ⊞ IRRIGATION CONTROLLER, IRRINET M AC 48 STATION SATELLITE CONTROLLER, MODEL NO. IS-R4A-HRU-OT-SB, WITH UHF HI-POWER RADIO WITH TRANSFORMER AND COMMUNICATION TO ICC CENTRAL CONTROLLER, INSTALLED IN POWDER COATED 'STRONG BOX' UL RATED STAINLESS STEEL, LOCKING SINGLE-DOOR ENCLOSURE WITH ANTENNAS AND SURGE PROTECTION. STRONG BOX ENCLOSURE SHALL BE MODEL NO. SB-1888 WITH 12" POWDER COATED RISER PEDESTAL. POWDER COAT COLOR FOR ENCLOSURE AND PEDESTAL SHALL BE TAN. INSTALL PER DETAIL A1/45. PROVIDE GROUNDING PER DETAIL B4/46.

IRRIGATION KEYED NOTES

- IRRIGATION SYSTEM POINT OF CONNECTION - SAWCUT AND REMOVE PAVEMENT AS NEEDED TO HOT TAP EXISTING 10" PVC WATER LINE AND INSTALL 2" WATER METER.
- CONTRACTOR SHALL DIRECTIONAL BORE BENEATH PAVEMENT BELOW ROAD PRISM. INSTALL ONE 4" STEEL SLEEVE PIPE FOR MAIN LINE AND ONE 2" HDPE SLEEVE PIPE FOR 24 VOLT IRRIGATION CONTROL WIRING AT EACH LOCATION. PIPE SHALL BE AT 18" DEPTH OF BURY AT BOTH ENDS OF BORE.
- TERMINATE CAPPED END IN A 17" X 30" X 18" HIGH VALVE BOX PER DETAIL B1/45.
- TERMINATE CAPPED END IN A 17" X 30" X 18" HIGH VALVE BOX PER DETAIL B1/45. IF ADDITIVE ALTERNATE #2 IS ACCEPTED, OMIT VALVE BOX AND EXTEND HDPE LINE AND WIRE CONDUIT FOR FUTURE EXPANSION TO ADDITIVE ALTERNATE #2 LIMITS.
- FENCED ENCLOSURE. SEE SHEET 15 OF 58.
- EXISTING 36" DIA. CONCRETE PIPE TO REMAIN. WHERE MAIN LINE OR WIRE CONDUIT CROSSES EXISTING CONCRETE PIPE, CONTRACTOR SHALL ROUTE MAIN LINE OR WIRE CONDUIT UNDER EXISTING CONCRETE PIPE. CONTRACTOR SHALL INSTALL MAIN LINE AND CONDUIT IN 4" HDPE (SDR 17) SLEEVES AS SHOWN ON THE PLAN.

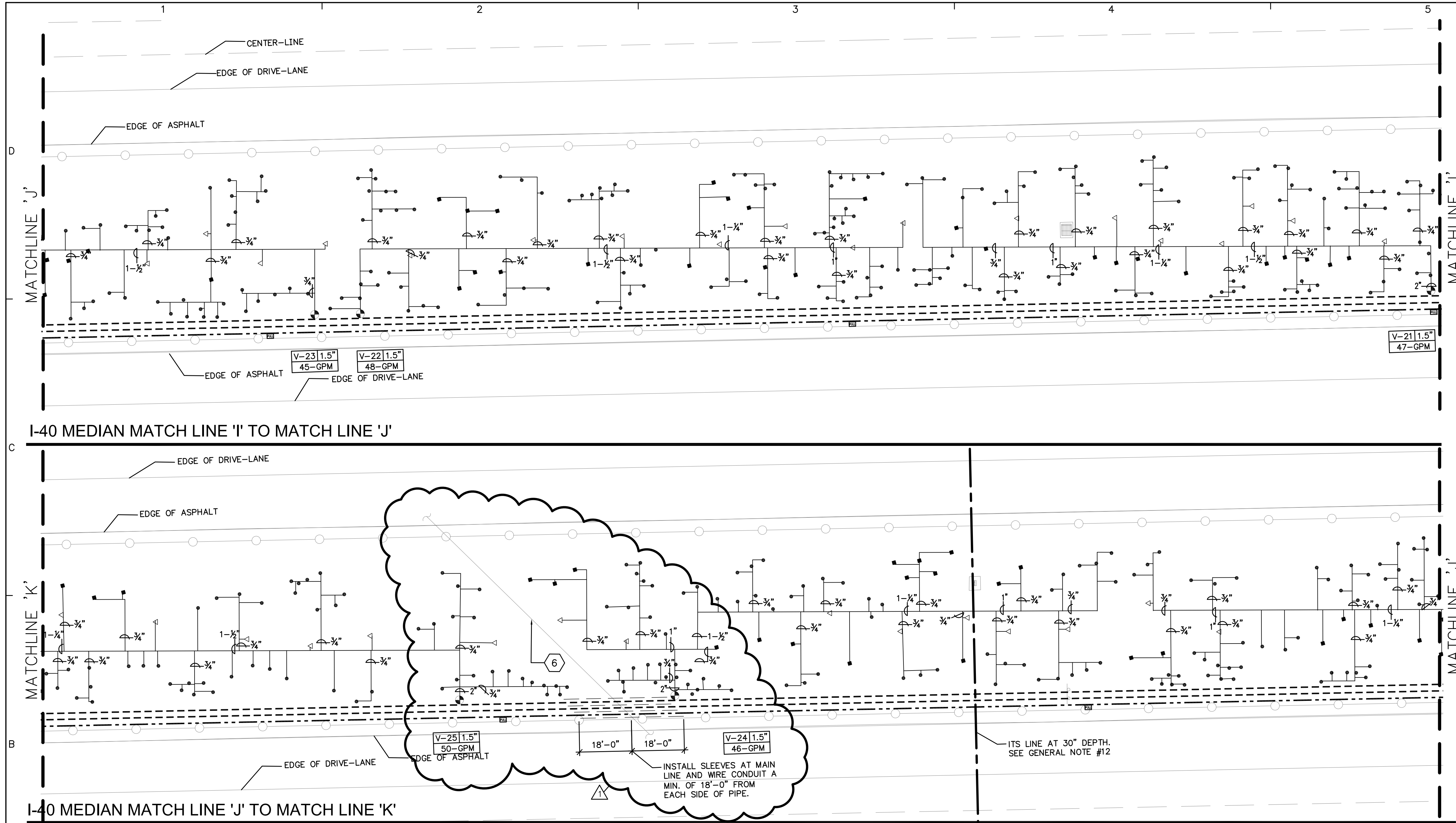
AS-BUILT
7/24/2012

CITY OF ALBUQUERQUE
DEPARTMENT OF MUNICIPAL DEVELOPMENT
ENGINEERING DIVISION

**WEST I-40 MEDIAN LANDSCAPE
IRRIGATION PLAN - BASE BID**

Design Review Committee	City Engineer Approval	Mo./Day/Yr.	Mo./Day/Yr.

City Project No. 771602 Zone Map No.H-10, H-11,J-08, J-09,J-10, K-08 Sheet 4 of 9



- ### IRRIGATION GENERAL NOTES
- CONTRACTOR SHALL FURNISH ALL LABOR, MATERIALS AND EQUIPMENT NECESSARY TO CONSTRUCT PROPOSED IRRIGATION SYSTEM IN ACCORDANCE WITH PLANS, WRITTEN SPECIFICATIONS AND DETAILS.
 - THIS SYSTEM WAS DESIGNED AT A MINIMUM STATIC PRESSURE OF 70 PSI AT THE POINT OF CONNECTION. CONTRACTOR SHALL VERIFY ACTUAL PSI AND DELIVER RESULTS TO LANDSCAPE ARCHITECT PRIOR TO CONSTRUCTION. IN THE EVENT THE ACTUAL PSI IS LESS THAN 70 PSI THE CONTRACTOR SHALL RECEIVE DIRECTION FROM LANDSCAPE ARCHITECT REGARDING DESIGN MODIFICATIONS IF NECESSARY.
 - ALL VALVE BOXES SHALL BE TAN WITH TAN BOLT-DOWN LIDS.
 - CONTRACTOR IS REQUIRED TO APPLY FOR TAPPING PERMITS FROM THE CITY OF ALBUQUERQUE FOR EACH WATER LINE TAP SHOWN ON THE PLANS. CONTACT ANTHONY MONTOYA AT (505) 924-3987.
 - IRRIGATION MAIN AND LATERAL LINES ARE SHOWN DIAGMATICALLY. ALL LINES SHALL BE INSTALLED A MINIMUM OF 10' FROM ANY EXISTING BRIDGE COLUMN OR HIGH MAST LIGHT UNLESS OTHERWISE NOTED. MAIN LINES SHALL BE INSTALLED A MIN. 4'-0" CLEAR OF POST AND CABLE BARRIER FOOTINGS.
 - AIR RELIEF VALVE LOCATION IS SHOWN SCHEMATICALLY ON THE PLAN AT APPARENT HIGH POINTS IN ELEVATION. CONTRACTOR SHALL SURVEY FINAL LOCATIONS OF AIR RELIEF VALVE PRIOR TO INSTALLATION TO ENSURE IT IS AT ACTUAL HIGH POINT.
 - BUBBLERS ARE SHOWN DIRECTLY ON TOP OF SHRUBS AND TREES FOR CLARITY ONLY. BUBBLERS SHALL BE LOCATED PER DETAIL A3/46 FOR SHRUBS AND DETAILS A3/46 AND A4/46 FOR TREES.
 - HUNTER PCB SERIES PRESSURE COMPENSATING BUBBLERS AND TORO FB-FC SERIES PRESSURE COMPENSATING BUBBLERS, OR APPROVED EQUAL, ARE ACCEPTABLE BUBBLER ALTERNATES.
 - HUNTER ICV-AS SERIES AUTOMATIC VALVE AND WEATHERMATIC 11000CR SERIES AUTOMATIC VALVE, OR APPROVED EQUAL, ARE ACCEPTABLE REMOTE CONTROL AND MASTER VALVE ALTERNATES.
 - VALVE-MATIC MODEL 151 AIR RELEASE VALVE, AND APCO MODEL 142 AIR RELEASE VALVE, OR APPROVED EQUAL, ARE ACCEPTABLE AIR RELEASE VALVE ALTERNATES.
 - PRIOR TO FINAL PROJECT ACCEPTANCE THE CONTRACTOR SHALL COMPLETE THE FOLLOWING:
 - INSTALL ONE CONTROLLER CHART IN EACH CONTROLLER ENCLOSURE. SUBMIT TWO CONTROLLER CHARTS FOR EACH CONTROLLER TO PARK MANAGEMENT.
 - HAVE BACKFLOW PREVENTERS TESTED, INSPECTED AND TAGGED WITH APPROVAL. SUBMIT TEST REPORT TO OWNER.
 - PERFORM AN EARTH GROUND RESISTANCE TEST ON THE IRRIGATION CONTROLLERS AND SUBMIT REPORT TO OWNER.
 - PROVIDE A STATEMENT SHOWING THAT THE WATER BILL FOR THE PROJECT HAS BEEN PAID IN FULL BY THE CONTRACTOR.
 - PROVIDE A BILLING STATEMENT FROM THE ELECTRICAL COMPANY'S BILLING THAT THE ELECTRIC BILL FOR THE PROJECT HAS BEEN PAID IN FULL BY THE CONTRACTOR AND TRANSFERRED TO THE CITY.
 - SUBMIT RECORD (AS-BUILT) DRAWINGS IN AUTOCAD (.DWG) FORMAT (TWO ELECTRONIC COPIES ON CD AND ONE PAPER COPY) IN ACCORDANCE WITH THE C.O.A. D.P.M. CHAPTER 27.
 - INCLUDE SQUARE FOOTAGE OF PROJECT.
 - INCLUDE LIST OF PLANTS INSTALLED AND QUANTITY OF EACH.
 - INCLUDE WATER METER ADDRESS.
 - INCLUDE ANY EASEMENTS THAT MAY HAVE BEEN CREATED FOR THE PROJECT (FOR IRRIGATION COMPONENTS OUTSIDE THE RIGHT-OF-WAY).
 - PROVIDE IRRIGATION COMPONENT KEYS TO OWNER.
 - ITS LINE LOCATIONS AND DEPTHS ARE APPROXIMATE. CONTRACTOR SHALL VERIFY LOCATION, PRESERVE AND PROTECT ITS LINES THROUGHOUT CONSTRUCTION OPERATIONS. CONTRACTOR SHALL COORDINATE WITH NMDOT FOR VERIFICATION OF LINE LOCATION AND DEPTH. ITS DAMAGED DUE TO CONSTRUCTION OPERATIONS SHALL BE REPAIRED OR REPLACED AT NO ADDITIONAL COST TO THE OWNER.
 - PRICKLY PEAR CACTI AND FAXON YUCCA SHALL BE HAND-WATERED AT INSTALLATION. BUBBLERS SHALL NOT BE INSTALLED AT PRICKLY PEAR CACTI NOR FAXON YUCCA. SEE PLANTING PLAN FOR LOCATION OF PRICKLY PEAR CACTI.
 - FEBCO PRV-1 LARGE DIAMETER PRESSURE REDUCING VALVE AND WILKINS MODEL 500 PRESSURE REDUCING VALVE, OR APPROVED EQUAL, ARE ACCEPTABLE PRESSURE REDUCING VALVE ALTERNATES.
 - CONTRACTOR SHALL PROVIDE POWER FROM ELECTRICAL PANEL TO IRRIGATION CONTROLLER, BACKFLOW PREVENTER ENCLOSURE, AND PUMP. ALL WORK AND MATERIALS SHALL MEET LOCAL CODES AND THE NATIONAL ELECTRIC CODE (N.E.C.). SEE SHEET 47 OF 58.

IRRIGATION LEGEND

- EXISTING 10" PVC CITY WATER MAIN. CONTRACTOR SHALL VERIFY LOCATION. WATER METER, SIZE 2". LOCATION IS SCHEMATIC, CONTRACTOR SHALL VERIFY LOCATION. INSTALL PER COA DRAWINGS 2361, 2363 AND 2367.
- BORING, SEE IRRIGATION KEYED NOTE #2.
- COPPER SERVICE LINE BETWEEN TAP AND METER, SIZE 2".
- IRRIGATION MAIN LINE, CLASS 200, BELL-END SOLVENT WELD PVC, SIZE 2 1/2", UNLESS OTHERWISE NOTED ON PLAN. DEPTH OF BURY 28" FOR CONTINUOUS PRESSURE MAIN LINE AND 18" FOR NON-CONTINUOUS PRESSURE MAIN LINE. THRUST BLOCKS SHALL BE INSTALLED AT ALL 90 DEG. ANGLES AND TEES ON THE MAIN LINE PER C.O.A. DRAWING 2704.
- 2 1/2" HDPE PIPE (SDR 11) AND 2" HDPE SLEEVE PIPE (SDR 13.5 WIRE CONDUIT) FOR FUTURE EXPANSION. DEPTH OF BURY 18". INSTALL WIRE CONDUIT FOR CONTROL WIRE IN MAIN LINE TRENCH WITH PULL BOXES EVERY 200 LF. SEE DETAIL C1/45.
- LATERAL PIPING, SCH. 40, BELL END, SOLVENT WELD PVC. SIZE AS SHOWN ON PLAN. DEPTH OF BURY 18". LATERAL PIPE CONVEYING LESS THAN 5 GPM SHALL BE 3/4".
- 1" CRISPIN AIR RELIEF VALVE, MODEL #A10. INSTALL PER C.O.A. DRAWING 2705 (EXCEPTION - CONSTRUCTION NOTE B SHALL BE REVISED TO READ: 17"x30"x18" HIGH VALVE BOX WITH ABS BOLT DOWN COVER). SEE IRRIGATION GENERAL NOTES #6 AND #10.
- MANUAL ISOLATION VALVE WITH UNIONS, SAME SIZE AS MAINLINE. INSTALL PER C.O.A. DRAWING #2707.
- BACKFLOW PREVENTER, FEBCO 825YA, 2" REDUCED PRESSURE PRINCIPLE BACKFLOW PREVENTER IN HOT ROCK MODEL #825R HEATED AND INSULATED BACKFLOW ENCLOSURE SEE DETAIL B1/46.
- BOOSTER PUMP. CONTRACTOR SHALL FURNISH AND INSTALL AN INLINE MULTISTAGE BOOSTER PUMP WITH STAINLESS STEEL SUCTION AND DISCHARGE MANIFOLDS COMPLETE WITH ISOLATION VALVES, CHECK VALVE, PRESSURE GAUGES, PRESSURE TRANSDUCERS AND 4.4 GALLON PRESSURE TANK. PUMP TO PROVIDE A 55 PSI BOOST GIVEN INLET PRESSURE OF 50 PSI AND OUTLET PRESSURE OF 115 IN A HEATED WITH EXHAUST FAN, TEMPERATURE CONTROLLED AND INSULATED ENCLOSURE (MIN. INSIDE 45'L X 35" W X 35"H). BOOSTER PUMP SHALL HAVE VARIABLE FREQUENCY DRIVE, OPERATE ON A SINGLE PHASE INCOMING POWER TO CONVERT TO THREE PHASE OUTPUT TO PUMP MOTOR AND OPERATE WITH A MAX. FLOW OF 50 GPM AND A MIN. FLOW OF 30 GPM. BOOSTER PUMP SHALL BE LOCATED IN A SEPARATE, EXTERIOR NEMA 3R RATED, LOCKING ENCLOSURE COMPLETE WITH COOLING PACKAGE W/ADJ. THERMOSTAT, DISCONNECT SWITCH, FUSE BLOCK W/FUSES, CIRCUIT TRANSFORMER AND H-0-A SWITCH, UL 508 LISTED.
- MASTER VALVE AND FLOW METER ASSEMBLY, BERMA IR-910-MO-RX WITH 1-GAL PULSE RATE, SIZE 2". SEE DETAIL B1/46.
- 2" PRESSURE REGULATOR, WATTS SERIES U5 IN AN 17"x30"x18" HIGH VALVE BOX WITH ABS BOLT DOWN FLUSH COVER WITH EXTENSIONS AS REQUIRED. SEE IRRIGATION GENERAL NOTE #14.
- REMOTE CONTROL VALVE ASSEMBLY, RAINBIRD PEB SERIES, PLASTIC BODY 24-VOLT AUTOMATIC VALVE, SIZE AS SHOWN ON PLAN. INSTALL PER C.O.A. DRAWING #2703. SEE IRRIGATION GENERAL NOTE #9.
- SOLVENT WELD CAP, SCH. 40 PVC, LINE SIZE.
- PRESSURE COMPENSATING BUBBLER ASSEMBLIES, RAINBIRD 1400 SERIES (OR EQUAL - SEE IRRIGATION GENERAL NOTE #9) AS FOLLOWS:

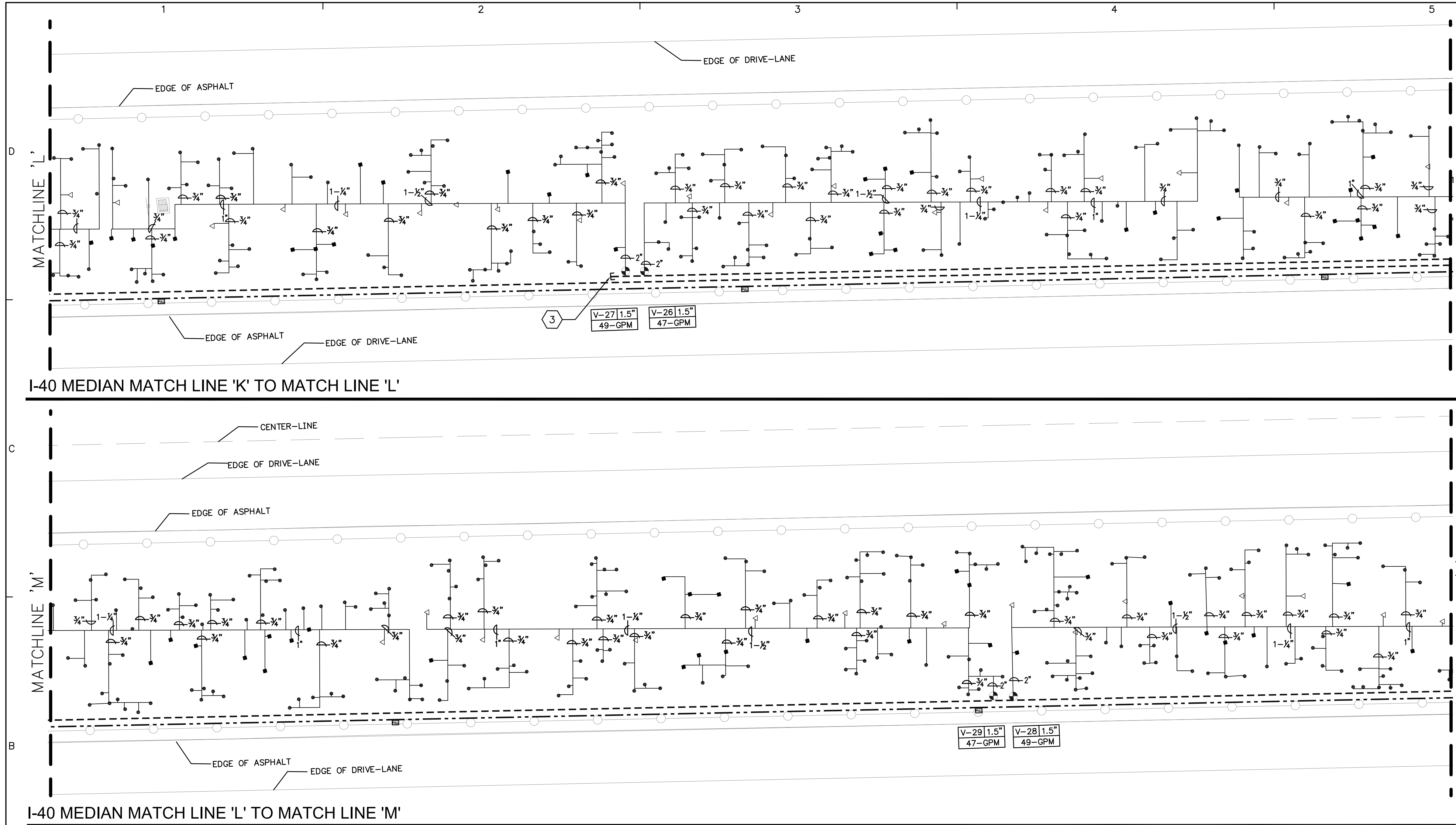
MODEL#	TOTAL GPM	PSI	INSTALL PER:
1 1401/ EACH PERENNIAL	.25 (10.25 GPM BUB.)	30	DETAIL A3/46
1 1402/ EACH SHRUB	.5 (10.50 GPM BUB.)	30	DETAIL A3/46
3 1404/ EACH TREE	3.00 (30.1 GPM BUB.)	30	DETAILS A4/46 AND A3/46
- PULL BOX. INSTALL AT 200' INTERVALS ALONG WIRE CONDUIT FOR FUTURE EXPANSION PER DETAIL C1/45.
- IRRIGATION CONTROLLER, IRRINET M AC 48 STATION SATELLITE CONTROLLER, MODEL NO. IS-R4A-HRU-0T-SB, WITH UHF HI-POWER RADIO WITH TRANSFORMER AND COMMUNICATION TO ICC CENTRAL CONTROLLER, INSTALLED IN POWDER COATED 'STRONG BOX' UL RATED STAINLESS STEEL, LOCKING SINGLE-DOOR ENCLOSURE WITH ANTENNAS AND SURGE PROTECTION. STRONG BOX ENCLOSURE SHALL BE MODEL NO. SB-1888 WITH 12" POWDER COATED RISER PEDESTAL. POWDER COAT COLOR FOR ENCLOSURE AND PEDESTAL SHALL BE TAN. INSTALL PER DETAIL A1/45. PROVIDE GROUNDING PER DETAIL B4/46.

IRRIGATION KEYED NOTES

- IRRIGATION SYSTEM POINT OF CONNECTION - SAWCUT AND REMOVE PAVEMENT AS NEEDED TO HOT TAP EXISTING 10" PVC WATER LINE AND INSTALL 2" WATER METER.
- CONTRACTOR SHALL DIRECTIONAL BORE BENEATH PAVEMENT BELOW ROAD PRISM. INSTALL ONE 4" STEEL SLEEVE PIPE FOR MAIN LINE AND ONE 2" HDPE SLEEVE PIPE FOR 24 VOLT IRRIGATION CONTROL WIRING AT EACH LOCATION. PIPE SHALL BE AT 18" DEPTH OF BURY AT BOTH ENDS OF BORE.
- TERMINATE CAPPED END IN A 17" X 30" X 18" HIGH VALVE BOX PER DETAIL B1/45.
- TERMINATE CAPPED END IN A 17" X 30" X 18" HIGH VALVE BOX PER DETAIL B1/45. IF ADDITIVE ALTERNATE #2 IS ACCEPTED, OMIT VALVE BOX AND EXTEND HDPE LINE AND WIRE CONDUIT FOR FUTURE EXPANSION TO ADDITIVE ALTERNATE #2 LIMITS.
- FENCED ENCLOSURE SEE SHEET 45 OF 58.
- EXISTING 36" DIA. CONCRETE PIPE TO REMAIN. WHERE MAIN LINE OR WIRE CONDUIT CROSSES EXISTING CONCRETE PIPE, CONTRACTOR SHALL ROUTE MAIN LINE OR WIRE CONDUIT UNDER EXISTING CONCRETE PIPE. CONTRACTOR SHALL INSTALL MAIN LINE AND CONDUIT IN 4" HDPE (SDR 17) SLEEVES AS SHOWN ON THE PLAN.

AS-BUILT
7/24/2012

CITY OF ALBUQUERQUE DEPARTMENT OF MUNICIPAL DEVELOPMENT ENGINEERING DIVISION			
WEST I-40 MEDIAN LANDSCAPE IRRIGATION PLAN - BASE BID			
Design Review Committee	City Engineer Approval	Last Design Update	
		Mo./Day/Yr.	
		Mo./Day/Yr.	
		Mo./Day/Yr.	
		Mo./Day/Yr.	
		Mo./Day/Yr.	
		Mo./Day/Yr.	
City Project No.	Zone Map No.H-10, H-11,J-08, J-09,J-10, K-08	Sheet	Of
771602		6	9



- ### IRRIGATION GENERAL NOTES
- CONTRACTOR SHALL FURNISH ALL LABOR, MATERIALS AND EQUIPMENT NECESSARY TO CONSTRUCT PROPOSED IRRIGATION SYSTEM IN ACCORDANCE WITH PLANS, WRITTEN SPECIFICATIONS AND DETAILS.
 - THIS SYSTEM WAS DESIGNED AT A MINIMUM STATIC PRESSURE OF 70 PSI AT THE POINT OF CONNECTION. CONTRACTOR SHALL VERIFY ACTUAL PSI AND DELIVER RESULTS TO LANDSCAPE ARCHITECT PRIOR TO CONSTRUCTION. IN THE EVENT THE ACTUAL PSI IS LESS THAN 70 PSI THE CONTRACTOR SHALL RECEIVE DIRECTION FROM LANDSCAPE ARCHITECT REGARDING DESIGN MODIFICATIONS IF NECESSARY.
 - ALL VALVE BOXES SHALL BE TAN WITH TAN BOLT-DOWN LIDS.
 - CONTRACTOR IS REQUIRED TO APPLY FOR TAPPING PERMITS FROM THE CITY OF ALBUQUERQUE FOR EACH WATER LINE TAP SHOWN ON THE PLANS. CONTACT ANTHONY MONTOYA AT (505) 924-3987.
 - IRRIGATION MAIN AND LATERAL LINES ARE SHOWN DIAGRAMMATICALLY. ALL LINES SHALL BE INSTALLED A MINIMUM OF 10' FROM ANY EXISTING BRIDGE COLUMN OR HIGH MAST LIGHT UNLESS OTHERWISE NOTED. MAIN LINES SHALL BE INSTALLED A MIN. 4'-0" CLEAR OF POST AND CABLE BARRIER FOOTINGS.
 - AIR RELIEF VALVE LOCATION IS SHOWN SCHEMATICALLY ON THE PLAN AT APPARENT HIGH POINTS IN ELEVATION. CONTRACTOR SHALL SURVEY FINAL LOCATIONS OF AIR RELIEF VALVE PRIOR TO INSTALLATION TO ENSURE IT IS AT ACTUAL HIGH POINT.
 - BUBBLERS ARE SHOWN DIRECTLY ON TOP OF SHRUBS AND TREES FOR CLARITY ONLY. BUBBLERS SHALL BE LOCATED PER DETAIL A3/46 FOR SHRUBS AND DETAILS A3/46 AND A4/46 FOR TREES.
 - HUNTER PCB SERIES PRESSURE COMPENSATING BUBBLERS AND TORO FB-FC SERIES PRESSURE COMPENSATING BUBBLERS, OR APPROVED EQUAL, ARE ACCEPTABLE BUBBLER ALTERNATES.
 - HUNTER IOV-AS SERIES AUTOMATIC VALVE AND WEATHERMATIC 11000CR SERIES AUTOMATIC VALVE, OR APPROVED EQUAL, ARE ACCEPTABLE REMOTE CONTROL AND MASTER VALVE ALTERNATES.
 - VALVE-MATIC MODEL 151 AIR RELEASE VALVE, AND APCO MODEL 142 AIR RELEASE VALVE, OR APPROVED EQUAL, ARE ACCEPTABLE AIR RELEASE VALVE ALTERNATES.
 - PRIOR TO FINAL PROJECT ACCEPTANCE THE CONTRACTOR SHALL COMPLETE THE FOLLOWING:
 - INSTALL ONE CONTROLLER CHART IN EACH CONTROLLER ENCLOSURE. SUBMIT TWO CONTROLLER CHARTS FOR EACH CONTROLLER TO PARK MANAGEMENT.
 - HAVE BACKFLOW PREVENTERS TESTED, INSPECTED AND TAGGED WITH APPROVAL. SUBMIT TEST REPORT TO OWNER.
 - PERFORM AN EARTH GROUND RESISTANCE TEST ON THE IRRIGATION CONTROLLERS AND SUBMIT REPORT TO OWNER.
 - PROVIDE A STATEMENT SHOWING THAT THE WATER BILL FOR THE PROJECT HAS BEEN PAID IN FULL BY THE CONTRACTOR.
 - PROVIDE A BILLING STATEMENT FROM THE ELECTRICAL COMPANY SHOWING THAT THE ELECTRIC BILL FOR THE PROJECT HAS BEEN PAID IN FULL BY THE CONTRACTOR AND TRANSFERRED TO THE CITY.
 - SUBMIT RECORD (AS-BUILT) DRAWINGS IN AUTOCAD (.DWG) FORMAT (TWO ELECTRONIC COPIES ON CD AND ONE PAPER COPY) IN ACCORDANCE WITH THE C.O.A. D.P.M. CHAPTER 27.
 - INCLUDE SQUARE FOOTAGE OF PROJECT.
 - INCLUDE LIST OF PLANTS INSTALLED AND QUANTITY OF EACH.
 - INCLUDE WATER METER ADDRESS.
 - INCLUDE ANY EASEMENTS THAT MAY HAVE BEEN CREATED FOR THE PROJECT (FOR IRRIGATION COMPONENTS OUTSIDE THE RIGHT-OF-WAY).
 - PROVIDE IRRIGATION COMPONENT KEYS TO OWNER.
 - THEY LINE LOCATIONS AND DEPTHS ARE APPROXIMATE. CONTRACTOR SHALL VERIFY LOCATION, PRESERVE AND PROTECT ITS LINES THROUGHOUT CONSTRUCTION OPERATIONS. CONTRACTOR SHALL COORDINATE WITH NMDOT FOR VERIFICATION OF LINE LOCATION AND DEPTH. ITS DAMAGED DUE TO CONSTRUCTION OPERATIONS SH BE REPAIRED OR REPLACED AT NO ADDITIONAL COST TO THE OWNER.
 - PRICKLY PEAR CACTI AND FAXON YUCCA SHALL BE HAND-WATERED AT INSTALLATION. BUBBLERS SHALL NOT BE INSTALLED AT PRICKLY PEAR CACTI NOR FAXON YUCCA. SEE PLANTING PLAN FOR LOCATION OF PRICKLY PEAR CACTI.
 - FEBCO PRV-1 LARGE DIAMETER PRESSURE REDUCING VALVE AND WILKINS MODEL 500 PRESSURE REDUCING VALVE, OR APPROVED EQUAL, ARE ACCEPTABLE PRESSURE REDUCING VALVE ALTERNATES.
 - CONTRACTOR SHALL PROVIDE POWER FROM ELECTRICAL PANEL TO IRRIGATION CONTROLLER, BACKFLOW PREVENTER ENCLOSURE, AND PUMP. ALL WORK AND MATERIALS SHALL MEET LOCAL CODES AND THE NATIONAL ELECTRIC CODE (N.E.C.). SEE SHEET 47 OF 58.

IRRIGATION LEGEND

- EXISTING 10" PVC CITY WATER MAIN. CONTRACTOR SHALL VERIFY LOCATION. WATER METER, SIZE 2". LOCATION IS SCHEMATIC, CONTRACTOR SHALL VERIFY LOCATION. INSTALL PER COA DRAWINGS 2361, 2363 AND 2367.
- BORING, SEE IRRIGATION KEYED NOTE #2.
- COPPER SERVICE LINE BETWEEN TAP AND METER, SIZE 2".
- NOTED ON PLAN. DEPTH OF BURY 28" FOR CONTINUOUS PRESSURE MAIN LINE AND 18" FOR NON-CONTINUOUS PRESSURE MAIN LINE. THRUST BLOCKS SHALL BE INSTALLED AT ALL 90 DEG. ANGLES AND TIES ON THE MAIN LINE PER C.O.A. DRAWING 2704.
- 2 1/2" HDPE PIPE (SDR 11) AND 2" HDPE SLEEVE PIPE (SDR 13.5 WIRE CONDUIT) FOR FUTURE EXPANSION. DEPTH OF BURY 18". INSTALL WIRE CONDUIT FOR CONTROL WIRE IN MAIN LINE TRENCH WITH PULL BOXES EVERY 200 LF. SEE DETAIL C1/45.
- LATERAL PIPING, SCH. 40, BELL END, SOLVENT WELD PVC. SIZE AS SHOWN ON PLAN. DEPTH OF BURY, 18". LATERAL PIPE CONVEYING LESS THAN 5 GPM SHALL BE 3/4".
- 1" CRISPIN AIR RELIEF VALVE, MODEL #A10. INSTALL PER C.O.A. DRAWING 2705 (EXCEPTION - CONSTRUCTION NOTE B SHALL BE REVISED TO READ: 17"x30"x18" HIGH VALVE BOX WITH ABS BOLT DOWN COVER). SEE IRRIGATION GENERAL NOTES #6 AND #10.
- MANUAL ISOLATION VALVE WITH UNIONS, SAME SIZE AS MAINLINE. INSTALL PER C.O.A. DRAWING #2707.
- BACKFLOW PREVENTER, FEBCO 825YA, 2" REDUCED PRESSURE PRINCIPLE BACKFLOW PREVENTER IN HOT WATER MAIN. SEE DETAIL B1/46.
- BOOSTER PUMP. CONTRACTOR SHALL FURNISH AND INSTALL AN INLINE MULTISTAGE BOOSTER PUMP WITH STAINLESS STEEL SUCTION AND DISCHARGE MANIFOLDS COMPLETE WITH ISOLATION VALVES, CHECK VALVE, PRESSURE GAUGES, PRESSURE TRANSDUCERS AND 4.4 GALLON PRESSURE TANK. PUMP TO PROVIDE A 55 PSI BOOST GIVEN INLET PRESSURE OF 50 PSI AND OUTLET PRESSURE OF 115 IN A HEATED WITH EXHAUST FAN, TEMPERATURE CONTROLLED AND INSULATED ENCLOSURE (MIN. INSIDE 45° L X 35° W X 35° H). BOOSTER PUMP SHALL HAVE VARIABLE FREQUENCY DRIVE, OPERATE ON A SINGLE PHASE INCOMING POWER TO CONVERT TO THREE PHASE OUTPUT TO PUMP MOTOR AND OPERATE WITH A MAX. FLOW OF 50 GPM AND A MIN. FLOW OF 30 GPM. BOOSTER PUMP SHALL BE LOCATED IN A SEPARATE, EXTERIOR NEMA 3R RATED, LOCKING ENCLOSURE COMPLETE WITH COOLING PACKAGE W/ADJ. THERMOSTAT, DISCONNECT SWITCH, FUSE BLOCK W/FUSES, CIRCUIT TRANSFORMER AND H-O-A SWITCH, UL 508 LISTED.
- MASTER VALVE AND FLOW METER ASSEMBLY, BERMAID IR-910-MO-RX WITH 1-GAL PULSE RATE, SIZE 2". SEE DETAIL B1/46.
- 2" PRESSURE REGULATOR, WATTS SERIES U5 IN AN 17"x30"x18" HIGH VALVE BOX WITH ABS BOLT DOWN FLUSH COVER WITH EXTENSIONS AS REQUIRED. SEE IRRIGATION GENERAL NOTE #14.
- REMOTE CONTROL VALVE ASSEMBLY, RAINBIRD PEB SERIES, PLASTIC BODY 24-VOLT AUTOMATIC VALVE, SIZE AS SHOWN ON PLAN. INSTALL PER C.O.A. DRAWING #2703. SEE IRRIGATION GENERAL NOTE #9.
- SOLVENT WELD CAP, SCH. 40 PVC, LINE SIZE. PRESSURE COMPENSATING BUBBLER ASSEMBLIES, RAINBIRD 1400 SERIES (OR EQUAL - SEE IRRIGATION GENERAL NOTE #8) AS FOLLOWS:

MODEL #	TOTAL GPM	PSI	INSTALL PER:
1 ● 1401/ EACH PERENNIAL	.25 (1@.25 GPM BUB.)	30	DETAIL A3/46
1 ● 1402/ EACH SHRUB	.5 (1@.50 GPM BUB.)	30	DETAIL A3/46
3 ● 1404/ EACH TREE	3.00 (3@ 1 GPM BUB.)	30	DETAILS A4/46 AND A3/46
- PULL BOX. INSTALL AT 200' INTERVALS ALONG WIRE CONDUIT FOR FUTURE EXPANSION PER DETAIL C1/45.
- IRRIGATION CONTROLLER, IRRINET M AC 48 STATION SATELLITE CONTROLLER, MODEL NO. IS-R4A-HRU-OT-SB, WITH UHF HI-POWER RADIO WITH TRANSFORMER AND COMMUNICATION TO ICC CENTRAL CONTROLLER, INSTALLED IN POWDER COATED 'STRONG BOX' UL RATED STAINLESS STEEL, LOCKING SINGLE-DOOR ENCLOSURE WITH ANTENNAS AND SURGE PROTECTION. STRONG BOX ENCLOSURE SHALL BE MODEL NO. SB-1888 WITH 12" POWDER COATED RISER PEDESTAL. POWDER COAT COLOR FOR ENCLOSURE AND PEDESTAL SHALL BE TAN. INSTALL PER DETAIL A1/45. PROVIDE GROUNDING PER DETAIL B4/46.

IRRIGATION KEYED NOTES

- IRRIGATION SYSTEM POINT OF CONNECTION - SAWCUT AND REMOVE PAVEMENT AS NEEDED TO HOT TAP EXISTING 10" PVC WATER LINE AND INSTALL 2" WATER METER.
- CONTRACTOR SHALL DIRECTIONAL BORE BENEATH PAVEMENT BELOW ROAD PRISM. INSTALL ONE 4" STEEL SLEEVE PIPE FOR MAIN LINE AND ONE 2" HDPE SLEEVE PIPE FOR 24 VOLT IRRIGATION CONTROL WIRING AT EACH LOCATION. PIPE SHALL BE AT 18" DEPTH OF BURY AT BOTH ENDS OF BORE.
- TERMINATE CAPPED END IN A 17" X 30" X 18" HIGH VALVE BOX PER DETAIL B1/45.
- TERMINATE CAPPED END IN A 17" X 30" X 18" HIGH VALVE BOX PER DETAIL B1/45. IF ADDITIVE ALTERNATE #2 IS ACCEPTED, OMIT VALVE BOX AND EXTEND HDPE LINE AND WIRE CONDUIT FOR FUTURE EXPANSION TO ADDITIVE ALTERNATE #2 LIMITS.
- FENCED ENCLOSURE. SEE SHEET 15 OF 58.
- EXISTING 36" DIA. CONCRETE PIPE TO REMAIN. WHERE MAIN LINE OR WIRE CONDUIT CROSSES EXISTING CONCRETE PIPE, CONTRACTOR SHALL ROUTE MAIN LINE OR WIRE CONDUIT UNDER EXISTING CONCRETE PIPE. CONTRACTOR SHALL INSTALL MAIN LINE AND CONDUIT IN 4" HDPE (SDR 17) SLEEVES AS SHOWN ON THE PLAN.

0 20' 40'

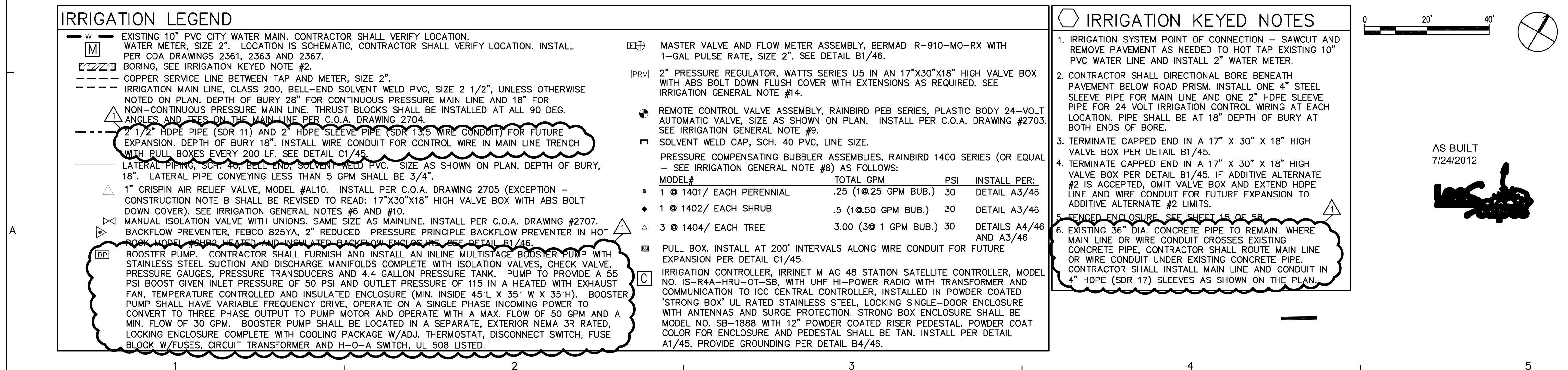
AS-BUILT
7/24/2012

CITY OF ALBUQUERQUE DEPARTMENT OF MUNICIPAL DEVELOPMENT ENGINEERING DIVISION	
WEST I-40 MEDIAN LANDSCAPE IRRIGATION PLAN - BASE BID	
Design Review Committee	City Engineer Approval
City Project No. 771602	Zone Map No.H-10, H-11,J-08, J-09,J-10, K-08
Sheet 7	Of 9

Last Design Update	Mo./Day/Yr.	Mo./Day/Yr.

I-40 MEDIAN MATCH LINE 'O' TO 'P'

I-40 MEDIAN MATCH LINE 'P' TO MATCHLINE 'Q'



IRRIGATION GENERAL NOTES

1. CONTRACTOR SHALL FURNISH ALL LABOR, MATERIALS AND EQUIPMENT NECESSARY TO CONSTRUCT PROPOSED IRRIGATION SYSTEM IN ACCORDANCE WITH PLANS, WRITTEN SPECIFICATIONS AND DETAILS.
2. THIS SYSTEM WAS DESIGNED FOR A MINIMUM STATIC PRESSURE OF 70 PSI AT THE POINT OF CONNECTION. CONTRACTOR SHALL VERIFY ACTUAL PSI AND DELIVER RESULTS TO LANDSCAPE ARCHITECT PRIOR TO CONSTRUCTION. IN THE EVENT THE ACTUAL PSI IS LESS THAN 70 PSI THE CONTRACTOR SHALL RECEIVE DIRECTION FROM LANDSCAPE ARCHITECT REGARDING DESIGN MODIFICATIONS IF NECESSARY.
3. ALL VALVE BOXES SHALL BE TAN WITH TAN BOLT-DOWN LIDS.
4. CONTRACTOR IS REQUIRED TO APPLY FOR TAPPING PERMIT FROM THE CITY OF ALBUQUERQUE FOR EACH WATER LINE TAP DOWN ON THE PLAN. CONTACT ANTHONY MONTOYA AT (505) 924-3987.
5. IRRIGATION MAIN AND LATERAL LINES ARE SHOWN DIAGRAMMATICALLY. ALL LINES SHALL BE INSTALLED A MINIMUM OF 10" FROM ANY EXISTING BRIDGE COLUMN OR HIGH MAINT LIGHT UNLESS OTHERWISE NOTED. MAIN LINES SHALL BE INSTALLED A MIN. 4"-0" CLEAR OF POST AND CABLE BARRIER FOOTINGS.
6. AIR RELIEF VALVE LOCATIONS ARE SHOWN SCHEMATICALLY ON THE PLAN AT APPARENT HIGH POINTS IN ELEVATION. CONTRACTOR SHALL SURVEY FINAL LOCATIONS OF AIR RELIEF VALVE PRIOR TO INSTALLATION TO ENSURE IT IS AT ACTUAL HIGH POINT.
7. BUBBLERS SHALL BE PLACED DIRECTLY ON TOP OF SHRUBS AND TREES FOR CLARITY ONLY. BUBBLERS SHALL BE INSTALLED PER DETAIL A3/46 FOR SHRUBS AND DETAILS A3/46 AND A4/46 FOR TREES.
8. HUNTER PCB-SERIES PRESSURE COMPENSATING BUBBLERS AND TORO FB-F SERIES PRESSURE COMPENSATING BUBBLERS, OR APPROVED EQUAL, ARE ACCEPTABLE BUBBLER ALTERNATES.
9. HUNTER ICV-A55 SERIES AUTOMATIC VALVE AND WEATHERMATIC 11000CR SERIES AUTOMATIC VALVE, OR APPROVED EQUAL, ARE ACCEPTABLE REMOTE CONTROL AND MASTER VALVE ALTERNATES.
10. VALVE-MATIC MODEL 151 AIR RELEASE VALVE, AND APCO MODEL #42 AIR RELEASE VALVE, OR APPROVED EQUAL, ONE FAIR OR EQUAL AIR RELEASE VALVE ALTERNATES.
11. PRIOR TO FINAL PROJECT ACCEPTANCE THE CONTRACTOR SHALL COMPLETE THE FOLLOWING:
 - A. INSTALL ONE CONTROLLER CHART IN EACH CONTROLLER ENCLOSURE. SUBMIT TWO CONTROLLER CHARTS FOR EACH CONTROLLER TO PARK MANAGEMENT.
 - B. HAVE BACKFLOW PREVENTERS TESTED, INSPECTED AND TAGGED WITH APPROVAL. SUBMIT TEST REPORT TO OWNER.
 - C. PERFORM AN EARTH GROUND RESISTANCE TEST ON THE IRRIGATION CONTROLLERS AND SUBMIT REPORT TO OWNER.
 - D. PROVIDE A STATEMENT SHOWING THAT THE WATER BILL FOR THE PROJECT HAS BEEN PAID IN FULL BY THE CONTRACTOR.
 - E. PROVIDE A BILLING STATEMENT FROM THE ELECTRICAL COMPANY SHOWING THAT THE ELECTRIC BILL FOR THE PROJECT HAS BEEN PAID IN FULL BY THE CONTRACTOR AND TRANSFERRED TO THE CITY.
 - F. SUBMIT RECORD (AS-BUILT) DRAWINGS IN AUTOCAD (.DWG) FORMAT (TWO ELECTRONIC COPIES ON CD AND ONE PAPER COPY) IN ACCORDANCE WITH THE C.O. D.P.M. CHAPTER 27.
12. INCLUDE SQUARE FOOTAGE OF PROJECT.
13. INCLUDE LIST OF PLANTS INSTALLED AND QUANTITY OF EACH.
14. INCLUDE WATER METER ADDRESS.
15. INCLUDE ANY EASEMENTS THAT MAY HAVE BEEN CREATED FOR THE PROJECT (FOR IRRIGATION COMPONENTS OUTSIDE THE RIGHT-OF-WAY).
16. PROVIDE IRRIGATION COMPONENTS KEYS TO OWNER.
17. ITS LINE LOCATIONS AND DEPTHS ARE APPROXIMATE. CONTRACTOR SHALL VERIFY LOCATION, PRESERVE AND PROTECT ITS LINES THROUGHOUT CONSTRUCTION OPERATIONS. CONTRACTOR SHALL COORDINATE WITH MMDOT FOR VERIFICATION OF LINE LOCATION AND DEPTH. ITS DAMAGED DUE TO CONSTRUCTION OPERATIONS SHALL BE REPAIRED OR REPLACED AT NO ADDITIONAL COST TO THE OWNER.
18. PRICKLY PEAR CACTI AND FAXON YUCCA SHALL BE HAND-WATERED AT INSTALLATION. BUBBLERS SHALL NOT BE INSTALLED NEAR PRICKLY PEAR CACTI NOR FAXON YUCCA. SEE PLANTING PLAN FOR LOCATION OF PRICKLY PEAR CACTI.
19. FEBCO PRV-1 LARGE DIAMETER PRESSURE REDUCING VALVE AND WILKINS MODEL 500 PRESSURE REDUCING VALVE, OR APPROVED EQUAL, ARE ACCEPTABLE PRESSURE REDUCING VALVE ALTERNATES.
20. CONTRACTOR SHALL PROVIDE POWER FROM ELECTRICAL PANEL TO IRRIGATION CONTROLLER, BACKFLOW PREVENTER ENCLOSURE, AND PUMP. ALL WORK AND MATERIALS SHALL MEET LOCAL CODES AND THE NATIONAL ELECTRIC CODE (N.E.C.). SEE SHEET 47 OF 58.

[illegible]

CITY OF ALBUQUERQUE						
DEPARTMENT OF MUNICIPAL DEVELOPMENT						
ENGINEERING DIVISION						
WEST I-40 MEDIAN LANDSCAPE IRRIGATION PLAN - BASE BID						
Design Review Committee		City Engineer Approval		Last Design Update	Mo./Day/Yr.	Mo./Day/Yr.
City Project No.		Zone Map No.H-10, H-11,J-08, J-09,J-10, K-08		Sheet	Of	
771602				9	9	