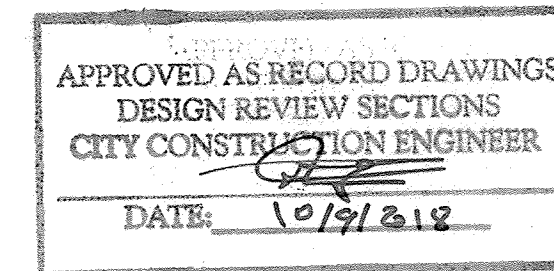


LOCATION  
ZONE ATLAS MAP: E-10-2

# LOTS 0-26, 0-27, AND 0-31-A VOLCANO CLIFFS, UNIT 1 ALBUQUERQUE, NEW MEXICO

## CONSTRUCTION PLANS FOR WATER & SANITARY SEWER IMPROVEMENTS NOVEMBER 2017



### INDEX OF SHEETS

SHEET NO.	DESCRIPTION
1	COVER
2	SURVEY PLAT (REFERENCE ONLY)
3	WATER AND SANITARY SEWER PLAN
4	EROSION AND SEDIMENT CONTROL

#### CERTIFICATION OF SUBSTANTIAL COMPLIANCE

I, ROBERT J. FIERRO, NMPE 20585, OF FIRM FIERRO & COMPANY, HEREBY CERTIFY THAT THIS PROJECT HAS BEEN CONSTRUCTED IN SUBSTANTIAL COMPLIANCE WITH AND IN ACCORDANCE WITH THE DESIGN INTENT OF THE APPROVED PLAN DATED NOVEMBER 2017. THE RECORD INFORMATION EDITED ONTO THE ORIGINAL DESIGN DOCUMENT HAS BEEN OBTAINED BY ME, NMPS 22909. I FURTHER CERTIFY THAT I HAVE PERSONALLY VISITED THE PROJECT SITE ON AUGUST 27, 2018 AND HAVE DETERMINED BY VISUAL INSPECTION THAT THE SURVEY DATA PROVIDED IS REPRESENTATIVE OF ACTUAL SITE CONDITIONS AND IS TRUE AND CORRECT TO THE BEST OF MY KNOWLEDGE AND BELIEF. THIS CERTIFICATION IS SUBMITTED IN SUPPORT OF A REQUEST FOR CERTIFICATE OF SUBSTANTIAL COMPLIANCE.

THE RECORD INFORMATION PRESENTED HEREON IS NOT NECESSARILY COMPLETE AND INTENDED ONLY TO VERIFY SUBSTANTIAL COMPLIANCE OF THE UTILITY ASPECTS OF THIS PROJECT. THOSE RELYING ON THE RECORD DOCUMENTS ARE ADVISED TO OBTAIN INDEPENDENT VERIFICATION OF ITS ACCURACY BEFORE USING IT FOR ANY PURPOSE.

*Robert J. Fierro*  
Robert J. Fierro N.M.P.E. No. 20585



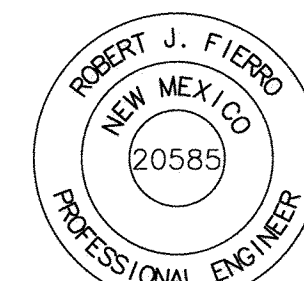
#### SURVEYOR'S CERTIFICATION

I, ROBERT J. FIERRO, A DULY QUALIFIED PROFESSIONAL SURVEYOR UNDER THE LAWS OF THE STATE OF NEW MEXICO, DO HEREBY CERTIFY THAT THE "AS-BUILT" INFORMATION SHOWN ON THESE DRAWINGS WAS OBTAINED FROM FIELD CONSTRUCTION AND "AS-BUILT" SURVEYS PERFORMED BY ME OR UNDER MY SUPERVISION; THAT THE AS-BUILT INFORMATION SHOWN ON THESE DRAWINGS WAS ADDED BY ME OR UNDER MY SUPERVISION, AND THAT THIS "AS-BUILT" INFORMATION IS TRUE AND CORRECT TO THE BEST OF MY KNOWLEDGE AND BELIEF. I AM NOT RESPONSIBLE FOR ANY OF THE DESIGN CONCEPTS, CALCULATIONS, ENGINEERING, OR INTENT OF THE RECORD DRAWINGS.

*Robert J. Fierro*  
ROBERT J. FIERRO, N.M.P.S. No. 22909  
8-27-2018  
Date



**Fierro & Company**  
ENGINEERING | SURVEYING  
5508 COSTA VERDE RD. NW  
ALBUQUERQUE, NEW MEXICO 87120  
PH (505) 352-8930  
www.fierrocompany.com



#### GENERAL NOTES:

- CITY OF ALBUQUERQUE SPECIFICATIONS FOR PUBLIC WORKS CONSTRUCTION, 1986 EDITION AS AMENDED THROUGH UPDATE 9, AMENDMENT #1 WILL BE REFERRED TO HEREIN AS THE "STANDARD SPECIFICATIONS." ALL WORK DETAILED IN THESE PLANS TO BE PERFORMED UNDER CONTRACT SHALL EXPECT AS OTHERWISE STATED OR PROVIDED FOR HEREON BE CONSTRUCTED IN ACCORDANCE WITH THE STANDARD SPECIFICATIONS.
- THREE DAYS PRIOR TO ANY EXCAVATION, CONTRACTOR MUST CONTACT NEW MEXICO CALL SYSTEM (260-1990) AND DETERMINE LOCATION OF EXISTING UTILITIES.
- PRIOR TO ANY CONSTRUCTION, THE CONTRACTOR SHALL EXCAVATE AND VERIFY THE HORIZONTAL AND VERTICAL LOCATIONS OF ALL OBSTRUCTIONS. SHOULD A CONFLICT EXIST, THE CONTRACTOR SHALL NOTIFY THE ENGINEER OR THE SURVEYOR SO THAT THE CONFLICT CAN BE RESOLVED WITHOUT DELAY.
- ALL EXISTING SIGNS, MARKERS, DELINEATORS, ETC., WITHIN THE CONSTRUCTION LIMITS SHALL BE REMOVED, STORED, AND RE-SET BY THE CONTRACTOR.
- THE CONTRACTOR SHALL NOTIFY THE ENGINEER NOT LESS THAN SEVEN (7) WORKING DAYS PRIOR TO STARTING WORK IN ORDER THAT THE ENGINEER MAY TAKE NECESSARY MEASURES TO INSURE THE PRESERVATION OF SURVEY MONUMENTS. THE CONTRACTOR SHALL NOT DISTURB PERMANENT SURVEY MONUMENTS WITHOUT THE CONSENT OF THE ENGINEER AND BEAR THE EXPENSE OF REPLACING ANY THAT MAY BE DISTURBED WITHOUT PERMISSION. REPLACEMENT SHALL BE DONE ONLY BY THE CITY SURVEYOR. WHEN A CHANGE IS MADE IN THE FINISHED ELEVATIONS OF THE PAVEMENT OF ANY ROADWAY IN WHICH A PERMANENT CITY MARKER IS LOCATED, CONTRACTOR SHALL, AT HIS OWN EXPENSE, ADJUST THE MONUMENT COVER TO THE NEW GRADE UNLESS OTHERWISE SPECIFIED. REFER TO SECTION 4.4 OF THE GENERAL CONDITIONS OF THE STANDARD SPECIFICATIONS.
- FIVE (5) DAYS PRIOR TO BEGINNING CONSTRUCTION THE CONTRACTOR SHALL SUBMIT TO THE CONSTRUCTION COORDINATION DIVISION A DETAILED CONSTRUCTION SCHEDULE. TWO (2) WORKING DAYS PRIOR TO CONSTRUCTION THE CONTRACTOR SHALL OBTAIN A BARRICADING PERMIT FROM THE CONSTRUCTION COORDINATING DIVISION. CONTRACTOR SHALL NOTIFY BARRICADE ENGINEER (924-3400) PRIOR TO OCCUPYING AN INTERSECTION. REFER TO SECTION 19 OF THE STANDARD SPECIFICATIONS.
- ANY WORK OCCURRING WITHIN AN ARTERIAL ROADWAY MAY REQUIRE 24 HOUR CONSTRUCTION.
- ALL UTILITIES AND UTILITY SERVICE LINES SHALL BE INSTALLED PRIOR TO PAVING.
- ALL STREET STRIPING ALTERED OR DESTROYED SHALL BE REPLACED BY THE CONTRACTOR WITH HOT THERMOPLASTIC REFLECTORIZED PAVEMENT MARKING. ALL NEW STRIPING SHALL BE HOT THERMOPLASTIC REFLECTORIZED PAVEMENT MARKING.
- THE CONTRACTOR SHALL ASSUME RESPONSIBILITY FOR ANY DAMAGE TO EXISTING PAVEMENTS, SIGNAGE, PAVEMENT MARKINGS, CURB AND GUTTER, DRIVEPADS, WHEELCHAIR RAMPS AND SIDEWALKS DURING CONSTRUCTION. APART FROM THOSE SECTIONS INDICATED FOR REMOVAL ON THE PLANS AND SHALL REPAIR OR REPLACE PER THE STANDARD SPECIFICATIONS AT HIS OWN EXPENSE.
- EXISTING UTILITY LINES AND PIPELINES SHOWN ON THESE DRAWINGS ARE SHOWN IN APPROXIMATE LOCATIONS ONLY. UTILITIES MAY EXIST WHERE NONE ARE SHOWN. THE ENGINEER HAS UNDERTAKEN NO FIELD VERIFICATION OF THE LOCATION, DEPTH, SIZE OR TYPE OF EXISTING UTILITY LINES AND PIPELINES. THE CONTRACTOR IS FULLY RESPONSIBLE FOR DAMAGE CAUSED BY FAILURE TO LOCATE AND PRESERVE EXISTING UTILITY LINES AND PIPELINES.
- THE CONTRACTOR SHALL SECURE A "TOPSOIL DISTURBANCE PERMIT" PRIOR TO BEGINNING CONSTRUCTION.
- THE CONTRACTOR SHALL ASSIST THE ENGINEER/INSPECTOR IN THE RECORDING OF DATA ON ALL UTILITY LINES AND ACCESSORIES AS REQUIRED BY THE OWNERS FOR THE PREPARATION OF "RECORD DRAWINGS." THE CONTRACTOR SHALL NOT COVER UTILITY LINES AND ACCESSORIES UNTIL ALL DATA HAS BEEN RECORDED.
- ALL CONSTRUCTION WITHIN CITY RIGHT-OF-WAY OR EASEMENTS MUST BE DONE FROM APPROVED WORK ORDER DOCUMENTS FROM THE CITY AND PREPARED BY FIERRO & COMPANY, LLC.
- THE CONTRACTOR SHALL DETERMINE IN ADVANCE OF HIS CONSTRUCTION IF OVERHEAD UTILITY LINES, SUPPORT STRUCTURES, POLES, GUYS, ETC., ARE AN OBSTRUCTION TO CONSTRUCTION OPERATIONS. IF ANY OBSTRUCTION TO CONSTRUCTION OPERATIONS IS EVIDENT, THE CONTRACTOR SHALL BE RESPONSIBLE FOR COORDINATING WITH THE APPROPRIATE UTILITY OWNER TO REMOVE OR SUPPORT THE UTILITY OBSTRUCTION. ANY COST ASSOCIATED WITH THIS EFFORT SHALL BE THE RESPONSIBILITY OF THE CONTRACTOR.
- THE CONTRACTOR IS TO SUPPORT AND MAINTAIN THE INTEGRITY OF ALL UNDERGROUND TELEPHONE, ELECTRIC CABLES AND CABLE TELEVISION UTILITIES AT NO ADDITIONAL COST TO THE OWNER. CABLE IS TO BE SUPPORTED EVERY 15 FEET (MINIMUM). CONTRACTOR SHALL COORDINATE WITH AND MAKE NECESSARY PAYMENT (IF ANY) TO UTILITY OWNER FOR DE-ENERGIZATION OF CABLES OR SUPPORT OF CABLES BY THE UTILITY OWNER.
- RCP SHALL BE INSTALLED SO THAT THE JOINT GAP AT THE HOME POSITION SHALL CONFORM TO THE APPROVED MANUFACTURER'S RECOMMENDATION. MANUFACTURER'S RECOMMEND JOINT GAP TOLERANCES FOR EACH PIPE SIZE AND TYPE SHALL BE SUBMITTED TO THE ENGINEER FOR APPROVAL PRIOR TO PLACEMENT OF PIPE RCP. JOINTS SHALL NOT BE GROUTED UNLESS DIRECTED BY THE ENGINEER AFTER CITY APPROVAL.
- ALL EXCAVATION, TRENCHING, AND SHORING ACTIVITIES MUST BE CARRIED-OUT IN ACCORDANCE WITH OSHA 29 CFR 1926.650 SUBPART P.
- THE CONTRACTOR SHALL BE RESPONSIBLE FOR PROVIDING AND MONITORING ALL CONSTRUCTION SIGNAGE UNTIL THE PROJECT HAS BEEN ACCEPTED BY THE CITY OF ALBUQUERQUE.
- OVERNIGHT PARKING OF CONSTRUCTION EQUIPMENT SHALL NOT OBSTRUCT DRIVEWAYS OR DESIGNATED TRAFFIC LANES. THE CONTRACTOR SHALL NOT STORE ANY EQUIPMENT OR MATERIALS WITHIN THE PUBLIC RIGHT-OF-WAY.
- CURB AND GUTTER, SIDEWALKS AND DRIVEPADS SHALL MATCH THE ELEVATIONS OF ABUTTING EXISTING AREAS AS SHOWN ON THE PLANS OR AS DIRECTED BY THE PROJECT ENGINEER. REMOVAL SHALL BE TO THE NEAREST JOINT. THE SUBGRADE PREP SHALL EXTEND ONE FOOT BEYOND THE FREE EDGE OF THE NEW CURB AND GUTTER, SIDEWALK AND DRIVEPAD.
- CONTRACTOR TO TEST SUBGRADE R-VALUE PRIOR TO CONSTRUCTION. IN THE EVENT THE R-VALUE IS LESS THAN 50, REMOVE 2 FEET OF SUBGRADE MATERIAL AND IMPORT MATERIAL WITH R-VALUE GREATER THAN 50 OR CONTACT THE ENGINEER IMMEDIATELY SO THE PAVEMENT SECTION CAN BE MODIFIED.

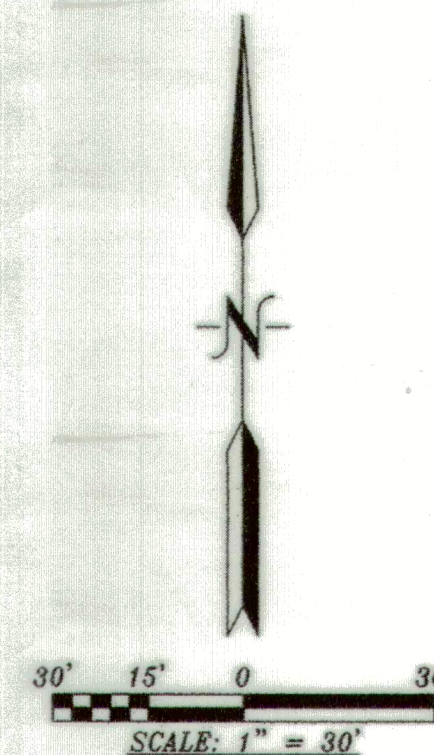
REV.	SHEETS	CITY ENGINEER	DATE	USER DEPARTMENT	DATE	USER DEPARTMENT	DATE
ENGINEERS STAMP & SIGNATURE		APPROVALS		ENGINEER		DATE	
		DRC Chairman		<i>Jamie Anderson</i>		12-1-17	
		Transportation		<i>Logan Pate</i>		12-1-17	
		Water/Wastewater		<i>Tommy C. Moore</i>		12-1-17	
		Hydrology		<i>Renee Brissette</i>		12-1-17	
		Const. Coord.					
CITY PROJECT NO.		772982		SHEET		1 OF 4	



SECTION 27, TOWNSHIP 11 NORTH, RANGE 2 EAST, N.M.P.M.  
BERNALILLO COUNTY, NEW MEXICO  
NOVEMBER, 2015

[illegible]

ACS STATION "14-E11"  
N=1,511,153.313  
E=1,505,010.856  
GRD TO GRID=0.99967986  
 $\Delta\alpha = -00^{\circ} 15' 38.94''$   
CENTRAL ZONE, NAD 1983



DOC# 2016031636

08/07/2016 11:27 AM Page: 2 of 2  
PLAT R:\$25.00 B: 2016C P: 0067 M. Toulouse Oliver, Bernalillo Cour

**H.S.S.** HARRIS SURVEYING, INC. PHONE: (505) 889-8056  
2412-D MONROE STREET N.E. FAX: (505) 889-8645  
ALBUQUERQUE, NEW MEXICO 87110

SHEET 2 OF 2

## As-Built "Record Drawings"

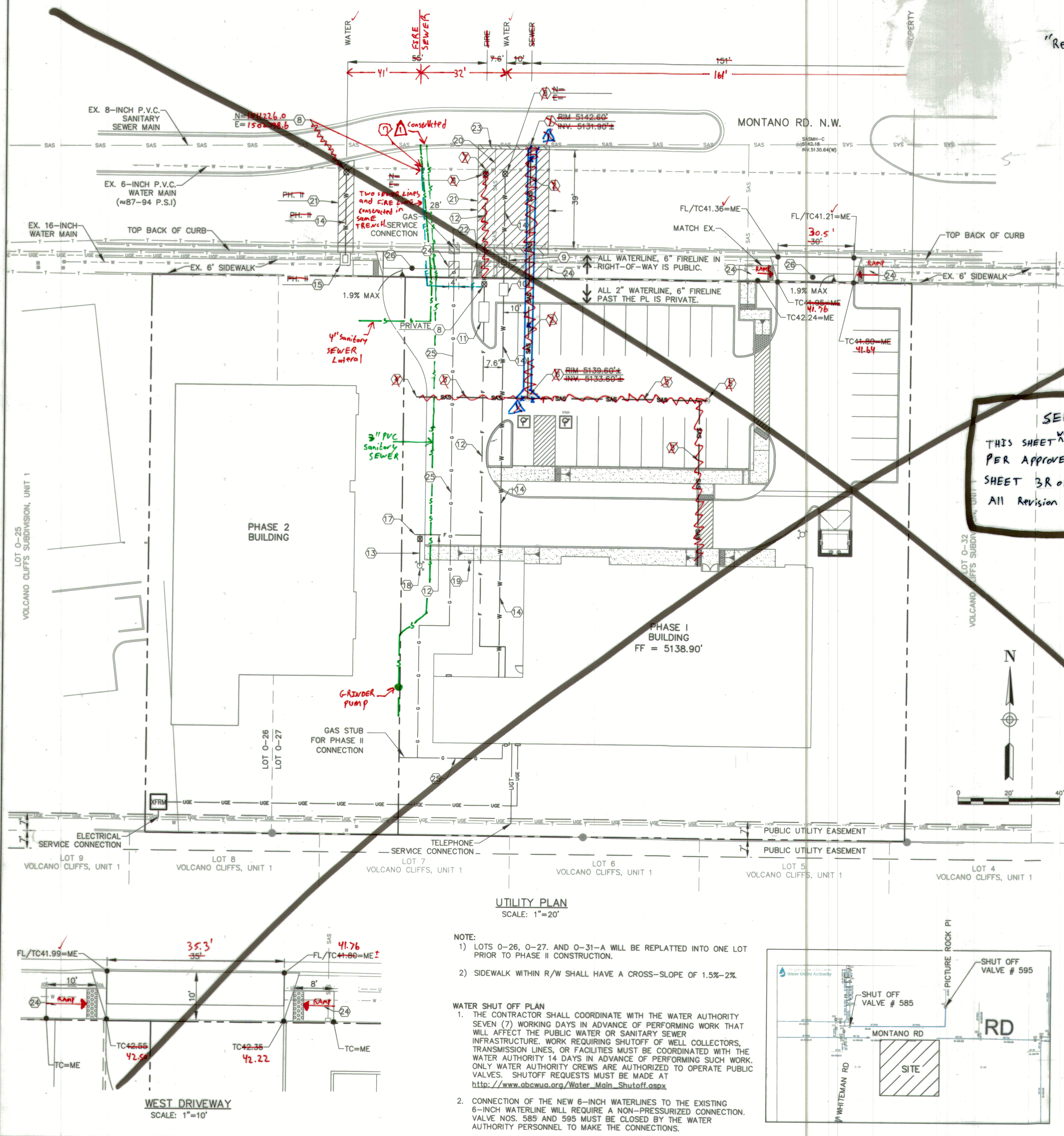
- 1) "PLAT OF LOT 0-31-A" WAS OBTAINED FROM BERNALILLO COUNTY CLERK'S OFFICE AND PREPARED BY HARRIS SURVEYING COMPANY, INC.
- 2) LOT 0-26 AND 0-27 BOUNDARIES ARE NOT PART OF THE SURVEY OF "PLAT OF LOT 0-31-A".
- 3) OUTLINE OF LOT 0-36 AND 0-27 ARE SKETCHED IN FOR REFERENCE ONLY AND NOT PART OF "PLAT OF LOT 0-31-A".
- 4) LOTS 0-31-A, 0-27, AND 0-28 WILL BE REPLATTED INTO ONE LOT BEFORE PHASE II CONSTRUCTION.

FOR INFORMATION ONLY

<p><b>As-Built</b> "Record Drawing"</p>		<p><b>AS BUILT INFORMATION</b></p> <p>CONTRACTOR <b>Ford Construction</b>          STARTED BY _____ DATE _____          ACCEPTANCE BY _____ DATE _____          FIELD DRAWING BY _____ DATE _____          CORRECTED BY _____ DATE _____</p> <p><b>MICRO-FILM INFORMATION</b></p> <p>RECORDED BY _____ NO. _____</p>																					
<p><b>BENCH MARKS</b></p> <p>"ACS STATION "14-E11"</p> <p>N=1,511,153.313 E=1,505,010.856 ELEV =5123.285 (NAVD 1988)</p>																							
<p><b>SURVEY INFORMATION</b></p> <p>FIELD NOTES</p> <p>NO. _____ BY _____ DATE _____</p>																							
<p><b>ENGINEER'S SEAL</b></p>																							
<p><b>REVISIONS</b></p> <table border="1" style="width: 100%;"> <thead> <tr> <th>NO.</th> <th>DATE</th> <th>REMARKS</th> <th>BY</th> </tr> </thead> <tbody> <tr> <td> </td> <td> </td> <td>DESIGN</td> <td> </td> </tr> </tbody> </table>		NO.	DATE	REMARKS	BY			DESIGN		<table border="1" style="width: 100%;"> <thead> <tr> <th>DESIGNED BY</th> <th>DATE</th> </tr> </thead> <tbody> <tr> <td>RJF</td> <td>JAN. 2017</td> </tr> </tbody> </table> <table border="1" style="width: 100%;"> <thead> <tr> <th>DRAWN BY</th> <th>DATE</th> </tr> </thead> <tbody> <tr> <td>RJF</td> <td>JAN. 2017</td> </tr> </tbody> </table> <table border="1" style="width: 100%;"> <thead> <tr> <th>CHECKED BY</th> <th>DATE</th> </tr> </thead> <tbody> <tr> <td>RJF</td> <td>JAN. 2017</td> </tr> </tbody> </table>		DESIGNED BY	DATE	RJF	JAN. 2017	DRAWN BY	DATE	RJF	JAN. 2017	CHECKED BY	DATE	RJF	JAN. 2017
NO.	DATE	REMARKS	BY																				
		DESIGN																					
DESIGNED BY	DATE																						
RJF	JAN. 2017																						
DRAWN BY	DATE																						
RJF	JAN. 2017																						
CHECKED BY	DATE																						
RJF	JAN. 2017																						
<p><b>FIERRRO &amp; COMPANY</b>          ENGINEERING   SURVEYING          5508 COSTA UERDE RD. NW          ALBUQUERQUE, NEW MEXICO 87120          PH (505) 352-8930  <a href="http://www.fierrocompany.com">www.fierrocompany.com</a></p>																							
<p>CITY OF ALBUQUERQUE PUBLIC WORKS DEPARTMENT ENGINEERING DEVELOPMENT GROUP</p>																							
<p><b>BEEHIVE HOMES</b> LOTS 0-26, 0-27, AND 0-31-A VOLCANO CLIFFS, UNIT 1 <b>SURVEY PLAT</b></p>																							
<p>DESIGN REVIEW COMMITTEE</p>		<p>CITY ENGINEER APPROVAL</p>																					
<p>CITY PROJECT No. <b>772982</b></p>		<p>ZONE MAP NO. <b>E-10-Z</b></p>																					
<p>SHEET <b>2</b> OF <b>4</b></p>		<p>Ma./DAY/YR. _____ Ma./DAY/YR. _____</p>																					



\\Seagate-1004\Public\Projects\SURVEYING\16220\16220-MWO UTILITY PLAN.dwg 11/30/2017 3:46:19 PM



As-Built  
"Record Drawing"

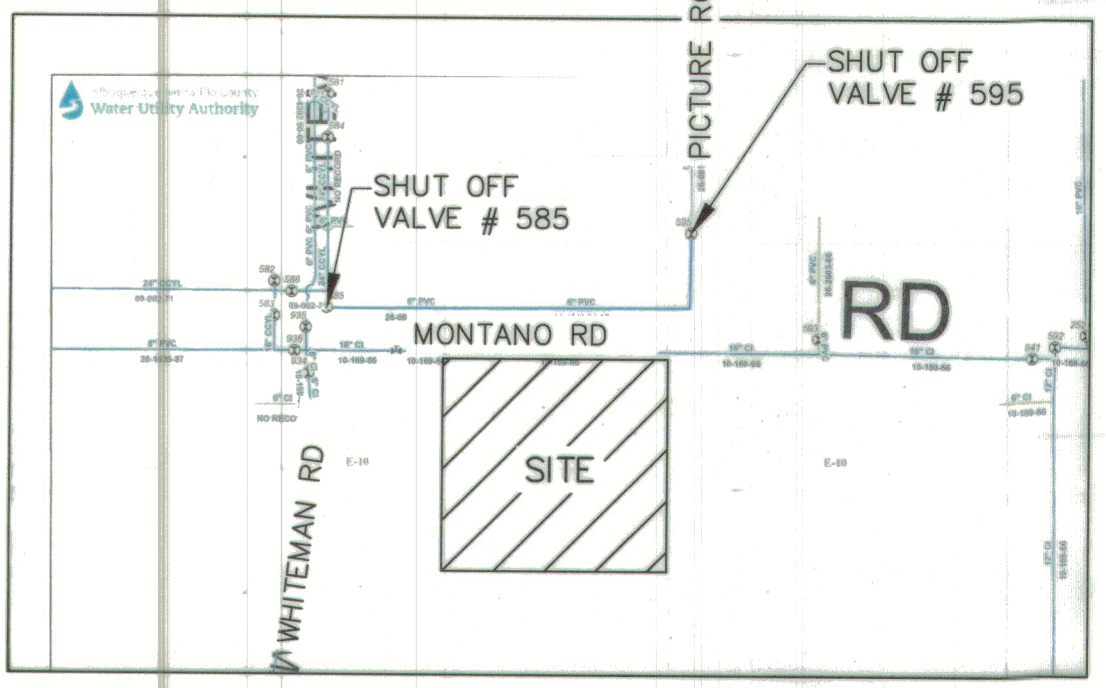
- GENERAL NOTES:**
- CONTRACTOR SHALL BE RESPONSIBLE FOR CONTACTING AND COORDINATING WITH NEW MEXICO ONE CALL PRIOR TO EXCAVATION.
  - CONTRACTOR TO FIELD VERIFY HORIZONTAL AND VERTICAL LOCATIONS OF ALL EXISTING UTILITIES, AND COORDINATE WITH ALL UTILITY OWNERS PRIOR TO ANY EXCAVATION.
  - CONSTRUCTION OF ALL WATER AND SANITARY SEWER WITHIN THE PUBLIC RIGHT-OF-WAY SHALL BE PERFORMED BY A PUBLIC WORK ORDER AND IN COMPLIANCE WITH LOCAL STANDARDS, SPECIFICATIONS, REQUIREMENTS, CODES, ORDINANCES, AND CRITERIA.
  - PRIVATE WATER AND SANITARY SEWER DESIGN AND CONSTRUCTION SHALL BE IN ACCORDANCE WITH THE UNIFORM PLUMBING CODE, 2009 EDITION OR LATEST VERSION.
  - DEFLECTIONS AT PIPE JOINTS AND FITTINGS SHALL BE ACCOMPLISHED IN ACCORDANCE WITH PIPE MANUFACTURER'S RECOMMENDED PRACTICES. IN NO CASE SHALL ANY SINGLE DEFLECTION, WHETHER AT A FITTING OR A JOINT, EXCEED THE MANUFACTURER'S RECOMMENDATIONS.
  - WHERE ANY SINGLE JOINT DEFLECTION IS SHOWN EXCEEDING 1.5', CONTRACTOR SHALL EVENLY DISTRIBUTE TOTAL DEFLECTIONS BETWEEN UPSTREAM AND DOWNSTREAM JOINTS OF PIPE TO ACCOMMODATE TOTAL DEFLECTION REQUIREMENT WITHOUT EXCEEDING THE MANUFACTURER'S RECOMMENDATION DEFLECTION AT ANY SINGLE JOINT.
  - CONCRETE THRUST BLOCKS SHALL BE USED ON ALL BENDS, TEES, AND UNDER VALVES.
  - ALL PIPING VALVES, FITTINGS, AND SERVICES UTILIZED FOR POTABLE WATER SERVICE, SHALL BE DISINFECTED IN ACCORDANCE WITH RMD REQUIREMENTS. PIPELINES SHALL BE DISINFECTED IN ACCORDANCE WITH AWWA C-651. REFER TO APWA SPECIFICATIONS SECTION 801.17. ADDITIONAL DISINFECTION, FLUSHING AND SAMPLING REQUIREMENTS TO BE COORDINATED WITH THE ABCWA.
  - REFER TO PLUMBING PLANS AND FIRE PROTECTION PLAN FOR UTILITIES WITHIN 5-FEET FROM BUILDING.
  - ALL UTILITY SERVICE EXTENSIONS WILL BE DESIGNED AND CONSTRUCTED BY THE SERVICE PROVIDERS.
  - TRACER WIRE TO BE INSTALLED ON ALL WATERLINE & SANITARY SEWER WITHIN PUBLIC RIGHT-OF-WAY AND ON ALL PUBLIC UTILITY INFRASTRUCTURE.
  - REFER TO GENERAL NOTES ON SHEET 1 OF 4.

- KEYED NOTES:**
- TWO (2) 4-IN. SAS. SERV. CONNECTIONS PER COA # 2125.
  - CONSTRUCT 4" DIA. SEWER MANHOLE TYPE "E" PER STD. DWG. 2102 AND MANHOLE FRAME AND COVER PER STD. DWG. 2110. MANHOLE FRAME AND COVER POSITION SHALL BE ADJUSTED TO AVOID CONFLICT WITH MEDIAN CURB LINE. REPAIR ANY DAMAGED IRRIGATION LINES; PROJECT OR REPLACE EXISTING LANDSCAPING.
  - INSTALL 6-INCH SANITARY SEWER LINE. TWO (2) 4" SAS LINES.
  - INSTALL 4-INCH PRIVATE SANITARY SEWER LINE.
  - PLUG END AND INSTALL SEWER LINE DEAD-END MARKER.
  - INSTALL ONE-WAY CLEANOUT (TRAFFIC RATED, PRIVATE).
  - CONSTRUCT 1 4" DIA. FIBERGLASS MANHOLE (PRIVATE). 4" C.O. (2) & 45" BENDS (2).
  - NEW WATERLINE CONNECTION TO EX. MAIN (6"x6" TEE) PER STD. DWG. 2301. NON-PRESSURIZED.
  - INSTALL GATE VALVE AND VALVE BOX PER STD. DWG. 2326 AND 2329.
  - NEW 1-1/2" METERED WATER SERVICE PER COA STD DWGS 2363 AND 2367.
  - INSTALL 2" RPBA PER STD. DWG. 2385 & 2389.
  - INSTALL 6" RPBA PER STD. DWG. 2385 & 2389.
  - INSTALL 6-INCH WATERLINE.
  - INSTALL 4-INCH WATERLINE.
  - INSTALL 2-INCH WATERLINE WITH 2" TAPING SADDLE.
  - INSTALL METER BOX PER STD. DWG. 2363 (METER TO BE INSTALLED W/PHASE II CONST.).
  - INSTALL PRIVATE 2-INCH GATE VALVE AND VALVE BOX.
  - INSTALL CAP AND CONCRETE THRUST BLOCK. PHASE II WILL EXTEND THESE LINES.
  - INSTALL PRIVATE FIRE HYDRANT WITH 4-INCH GATE VALVE AND VALVE BOX.
  - INSTALL FIRE DEPARTMENT CONNECT WITHIN 100 FEET OF FIRE HYDRANT.
  - REMOVE AND DISPOSE OF EX. 4-INCH LATERAL. SEAL 4-INCH OPENING WATER TIGHT.
  - REMOVE AND REPLACE EX. STANDARD CURB AND GUTTER PER STD. DWG. 2415A.
  - REMOVE AND REPLACE EX. MEDIAN CURB & GUTTER PER STD. DWG. 2415B.
  - REMOVE AND REPLACE EX. 4" SIDEWALK PER STD. DWG. 2430.
  - GAS SERVICE BY NEW MEXICO GAS COMPANY. CONTRACTOR SHALL COORDINATE INSTALLATION WITH N.M.G.C. AND MEET MINIMUM CLEARANCES OF OTHER SERVICES PER CITY AND NMGC CODES/STANDARDS.
  - CONSTRUCT DRIVEPAD PER COA STD. DWG. 2425. SEE DETAIL FOR ELEV. OF W. DRIVEWAY AND SEE PLAN FOR ELEV. OF E. DRIVEWAY.

SEE SHEET 3R OF 4.  
THIS SHEET WAS NOT CONSTRUCTED  
PER APPROVED PLAN.  
SHEET 3R OF 4 contains  
ALL REVISION made in FIELD.

UTILITY PLAN  
SCALE: 1"=20'

- NOTE:**
- LOTS 0-26, 0-27, AND 0-31-A WILL BE REPLATTED INTO ONE LOT PRIOR TO PHASE II CONSTRUCTION.
  - SIDEWALK WITHIN R/W SHALL HAVE A CROSS-SLOPE OF 1.5%-2%.
- WATER SHUT OFF PLAN**
- THE CONTRACTOR SHALL COORDINATE WITH THE WATER AUTHORITY SEVEN (7) WORKING DAYS IN ADVANCE OF PERFORMING WORK THAT WILL AFFECT THE PUBLIC WATER OR SANITARY SEWER INFRASTRUCTURE. WORK REQUIRING SHUTOFF OF WELL COLLECTORS, TRANSMISSION LINES, OR FACILITIES MUST BE COORDINATED WITH THE WATER AUTHORITY 14 DAYS IN ADVANCE OF PERFORMING SUCH WORK. ONLY WATER AUTHORITY CREWS ARE AUTHORIZED TO OPERATE PUBLIC VALVES. SHUTOFF REQUESTS MUST BE MADE AT [http://www.abcwa.org/Water\\_Main\\_Shutoff.aspx](http://www.abcwa.org/Water_Main_Shutoff.aspx)
  - CONNECTION OF THE NEW 6-INCH WATERLINES TO THE EXISTING 6-INCH WATERLINE WILL REQUIRE A NON-PRESSURIZED CONNECTION. VALVE NOS. 585 AND 595 MUST BE CLOSED BY THE WATER AUTHORITY PERSONNEL TO MAKE THE CONNECTIONS.



- LEGEND**
- SAS MANHOLE
  - CLEANOUT
  - FIRE HYDRANT
  - WATER METER
  - WATER VALVE
  - GAS METER
  - PROPERTY LINE
  - PROPOSED FIRE SERVICE
  - PROPOSED WATER SERVICE
  - PROPOSED SANITARY SEWER
  - PROPOSED GAS
  - PROPOSED ELECTRIC
  - PROPOSED TELEPHONE
  - EX OVERHEAD ELECTRIC LINE
  - EX UNDERGROUND ELECTRIC LINE
  - EX TELEPHONE LINE
  - EX WATER LINE
  - EX SEWER LINE

**Fierro & Company**  
ENGINEERING | SURVEYING  
5508 COSTA VERDE RD. NW  
ALBUQUERQUE, NEW MEXICO 87120  
PH (505) 352-8930  
[www.fierrocompany.com](http://www.fierrocompany.com)

CITY OF ALBUQUERQUE  
PUBLIC WORKS DEPARTMENT  
ENGINEERING DEVELOPMENT GROUP  
**BEEHIVE HOMES**  
LOTS 0-26, 0-27, AND 0-31-A VOLCANO CLIFFS, UNIT 1  
UTILITY PLAN

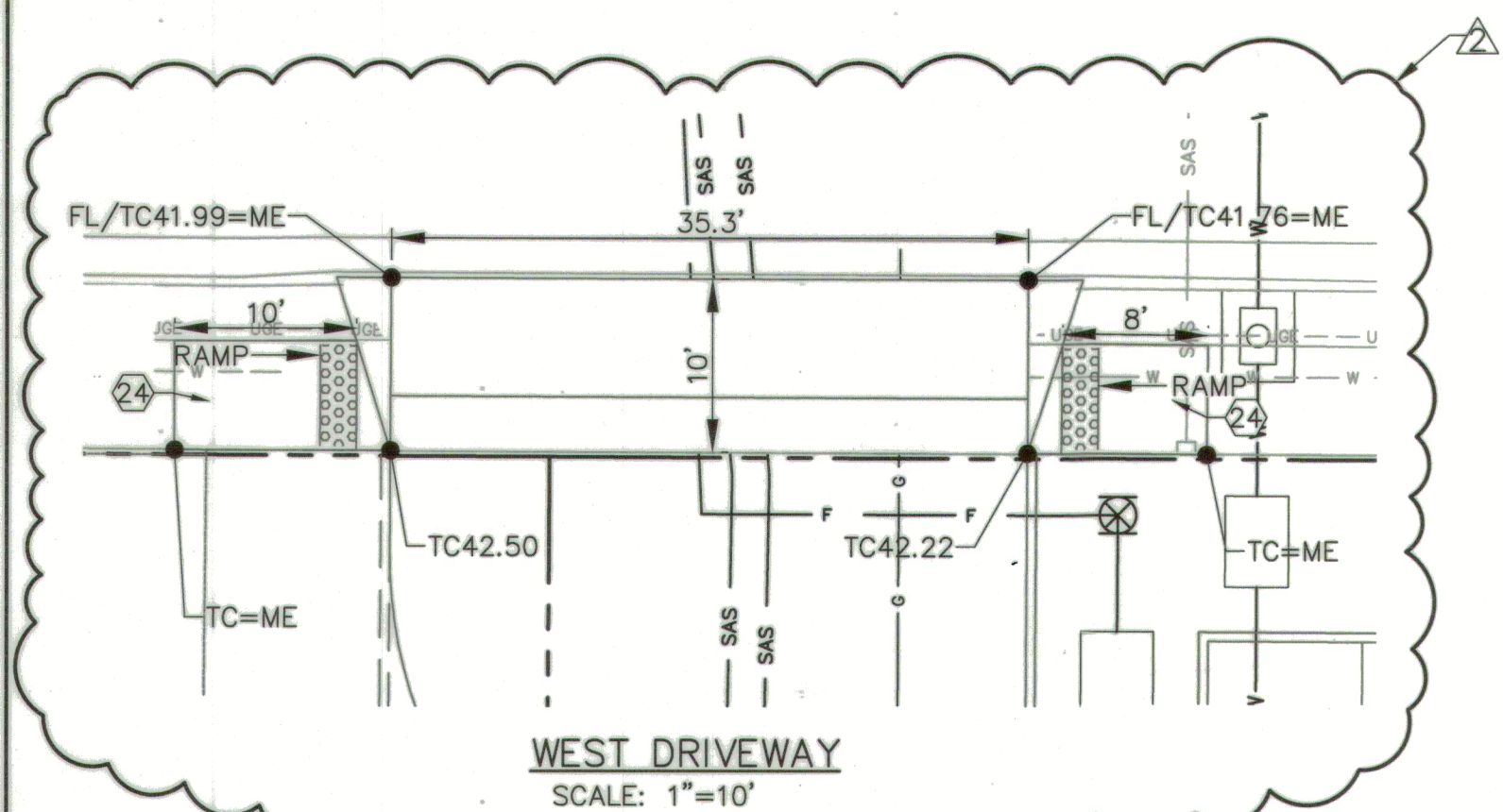
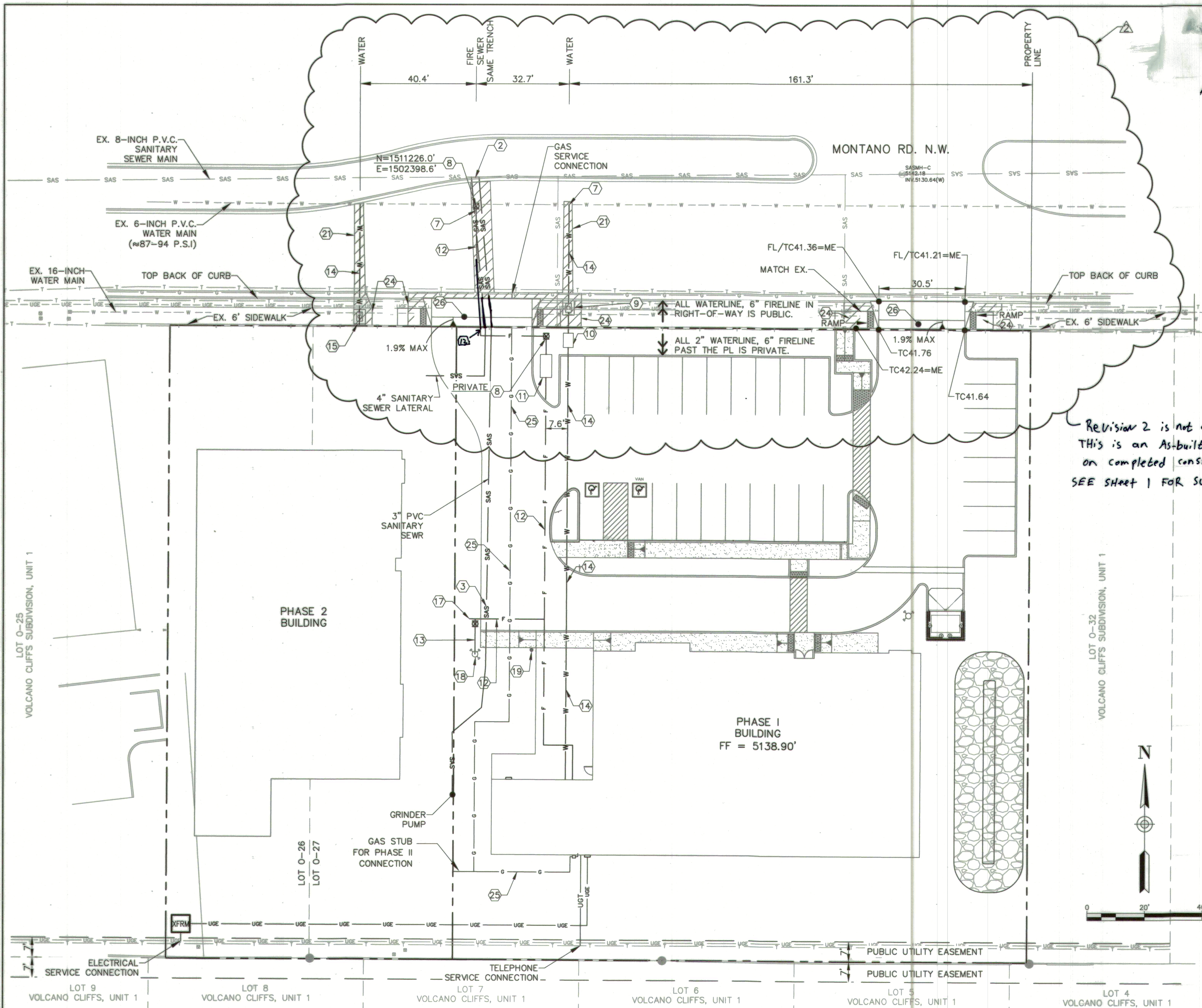
DESIGN REVIEW COMMITTEE  
**APPROVED**  
DEC 01 2017  
DESIGN REVIEW COMMITTEE

CITY ENGINEER APPROVAL  
**APPROVED**  
JAN 04 2018  
CITY ENGINEER

Mo./DAY/YR. Mo./DAY/YR.  
DESIGNED BY RJF DATE JAN. 2017  
DRAWN BY RJF DATE JAN. 2017  
CHECKED BY RJF DATE JAN. 2017

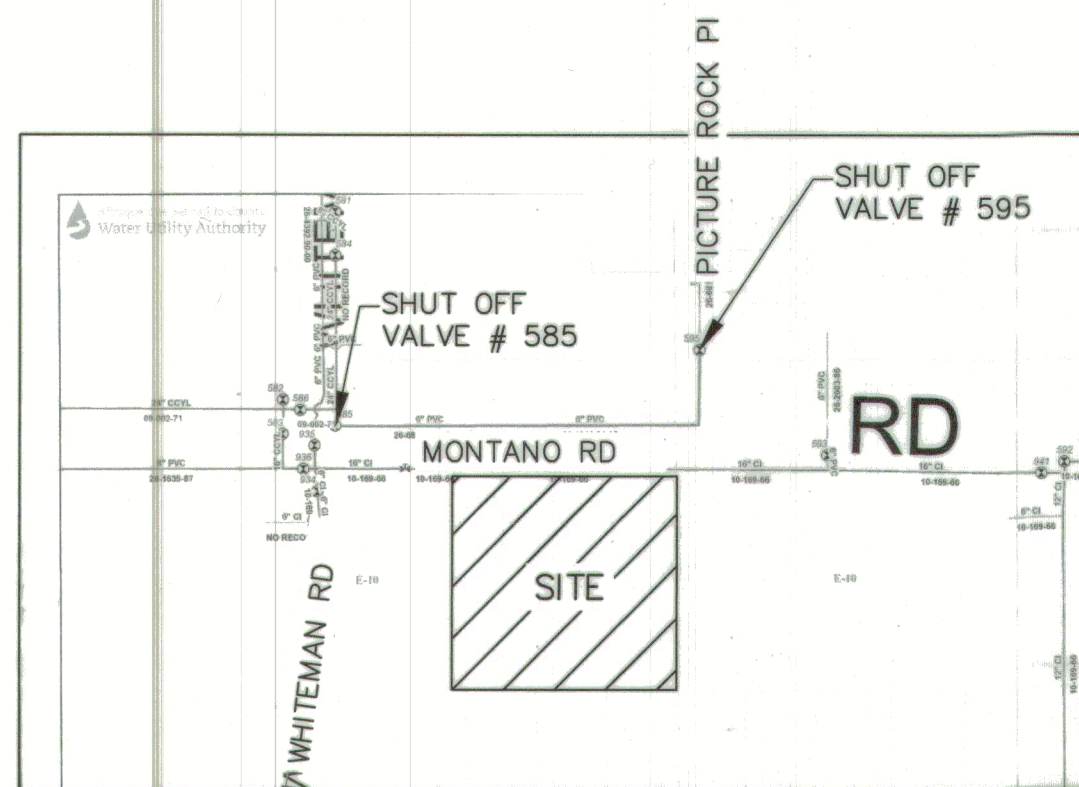
CITY PROJECT No. 772982  
ZONE MAP NO. E-10-Z  
SHEET 3 OF 4





UTILITY PLAN  
SCALE: 1"=20'

- NOTE:
- LOTS 0-26, 0-27, AND 0-31-A WILL BE REPLATTED INTO ONE LOT PRIOR TO PHASE II CONSTRUCTION.
  - SIDEWALK WITHIN R/W SHALL HAVE A CROSS-SLOPE OF 1.5%-2%.
- WATER SHUT OFF PLAN
- THE CONTRACTOR SHALL COORDINATE WITH THE WATER AUTHORITY SEVEN (7) WORKING DAYS IN ADVANCE OF PERFORMING WORK THAT WILL AFFECT THE PUBLIC WATER OR SANITARY SEWER INFRASTRUCTURE. WORK REQUIRING SHUTOFF OF WELL COLLECTORS, TRANSMISSION LINES, OR FACILITIES MUST BE COORDINATED WITH THE WATER AUTHORITY 14 DAYS IN ADVANCE OF PERFORMING SUCH WORK. ONLY WATER AUTHORITY CREWS ARE AUTHORIZED TO OPERATE PUBLIC VALVES. SHUTOFF REQUESTS MUST BE MADE AT [http://www.abcwug.org/Water\\_Main\\_Shutoff.aspx](http://www.abcwug.org/Water_Main_Shutoff.aspx)
  - CONNECTION OF THE NEW 6-INCH WATERLINES TO THE EXISTING 6-INCH WATERLINE WILL REQUIRE A NON-PRESSURIZED CONNECTION. VALVE NOS. 585 AND 595 MUST BE CLOSED BY THE WATER AUTHORITY PERSONNEL TO MAKE THE CONNECTIONS.



As-Built

"Record Drawing"

Revision 2 is not a Design Revision.  
This is an As-Built Revision Based  
on completed construction.  
SEE SHEET 1 FOR SURVEYOR'S CERTIFICATION.

GENERAL NOTES:

- CONTRACTOR SHALL BE RESPONSIBLE FOR CONTACTING AND COORDINATING WITH NEW MEXICO ONE CALL PRIOR TO EXCAVATION.
- CONTRACTOR TO FIELD VERIFY HORIZONTAL AND VERTICAL LOCATIONS OF ALL EXISTING UTILITIES, AND COORDINATE WITH ALL UTILITY OWNERS PRIOR TO ANY EXCAVATION.
- CONSTRUCTION OF ALL WATER AND SANITARY SEWER WITHIN THE PUBLIC RIGHT-OF-WAY SHALL BE PERFORMED BY A PUBLIC WORK ORDER AND IN COMPLIANCE WITH LOCAL STANDARDS, SPECIFICATIONS, REQUIREMENTS, CODES, ORDINANCES, AND CRITERIA.
- PRIVATE WATER AND SANITARY SEWER DESIGN AND CONSTRUCTION SHALL BE IN ACCORDANCE WITH THE UNIFORM PLUMBING CODE, 2009 EDITION OR LATEST VERSION.
- DEFLECTIONS AT PIPE JOINTS AND FITTINGS SHALL BE ACCOMPLISHED IN ACCORDANCE WITH PIPE MANUFACTURER'S RECOMMENDED PRACTICES. IN NO CASE SHALL ANY SINGLE DEFLECTION, WHETHER AT A FITTING OR A JOINT, EXCEED THE MANUFACTURER'S RECOMMENDATIONS.
- WHERE ANY SINGLE JOINT DEFLECTION IS SHOWN EXCEEDING 1.5', CONTRACTOR SHALL EVENLY DISTRIBUTE TOTAL DEFLECTIONS BETWEEN UPSTREAM AND DOWNSTREAM JOINTS OF PIPE TO ACCOMMODATE TOTAL DEFLECTION REQUIREMENT WITHOUT EXCEEDING THE MANUFACTURER'S RECOMMENDATION DEFLECTION AT ANY SINGLE JOINT.
- CONCRETE THRUST BLOCKS SHALL BE USED ON ALL BENDS, TEES, AND UNDER VALVES.
- ALL PIPING VALVES, FITTINGS, AND SERVICES UTILIZED FOR POTABLE WATER SERVICE, SHALL BE DISINFECTED IN ACCORDANCE WITH NMED REQUIREMENTS. PIPELINES SHALL BE DISINFECTED IN ACCORDANCE WITH AWWA C-651. REFER TO APWA SPECIFICATIONS SECTION 801.17. ADDITIONAL DISINFECTION, FLUSHING, AND SAMPLING REQUIREMENTS TO BE COORDINATED WITH THE ABCWA.
- REFER TO PLUMBING PLANS AND FIRE PROTECTION PLAN FOR UTILITIES WITHIN 5- FEET FROM BUILDING.
- ALL DRY UTILITY SERVICE EXTENSIONS WILL BE DESIGNED AND CONSTRUCTED BY THE SERVICE PROVIDERS.
- TRACER WIRE TO BE INSTALLED ON ALL WATERLINE & SANITARY SEWER WITHIN PUBLIC RIGHT-OF-WAY AND ON ALL PUBLIC UTILITY INFRASTRUCTURE.
- REFER TO GENERAL NOTES ON SHEET 1 OF 4.

KEYED NOTES:

- TWO (2) 4-IN. SAS. SERV. CONNECTIONS PER COA #2125. REPAIR ANY DAMAGED IRRIGATION LINES; PROJECT OR REPLACE EXISTING LANDSCAPING.
- INSTALL TWO (2) 4-INCH SANITARY SEWER LINES.
- INSTALL 4-INCH PRIVATE SANITARY SEWER LINE.
- PLUG END AND INSTALL SEWER LINE DEAD-END MARKER.
- INSTALL ONE-WAY CLEANOUT (TRAFFIC RATED, PRIVATE).
- 4-INCH C.O. (2) & 45° BENDS (2) (PRIVATE).
- NEW WATERLINE CONNECTION TO EX. MAIN (6"x6" TEE) PER STD. DWG. 2301. NON-PRESSURIZED.
- INSTALL GATE VALVE AND VALVE BOX PER STD. DWG. 2326 AND 2329.
- NEW 1-1/2" METERED WATER SERVICE PER COA STD DWGS 2363 AND 2367..
- INSTALL 2" RPBA PER STD. DWG. 2385 & 2389.
- INSTALL 6" RPBA PER STD. DWG. 2385 & 2389.
- INSTALL 6-INCH WATERLINE.
- INSTALL 4-INCH WATERLINE.
- INSTALL 2-INCH WATERLINE WITH 2" TAPING SADDLE.
- INSTALL METER BOX PER STD. DWG. 2363 (METER TO BE INSTALLED W/PHASE II CONST.).
- INSTALL PRIVATE 2-INCH GATE VALVE AND VALVE BOX.
- INSTALL CAP AND CONCRETE THRUST BLOCK. PHASE II WILL EXTEND THESE LINES.
- INSTALL PRIVATE FIRE HYDRANT WITH 4-INCH GATE VALVE AND VALVE BOX.
- INSTALL FIRE DEPARTMENT CONNECT WITHIN 100 FEET OF FIRE HYDRANT.
- REMOVE AND DISPOSE OF EX. 4-INCH LATERAL. SEAL 4-INCH OPENING WATER TIGHT.
- REMOVE AND REPLACE EX. ASPHALT PAVEMENT PER STD. DWG. 2465, ARTERIAL ROAD.
- REMOVE AND REPLACE EX. STANDARD CURB AND GUTTER PER STD. DWG. 2415A.
- REMOVE AND REPLACE EX. MEDIAN CURB & GUTTER PER STD. DWG. 2415B.
- REMOVE AND REPLACE EX. 4" SIDEWALK PER STD. DWG. 2430.
- GAS SERVICE BY NEW MEXICO GAS COMPANY. CONTRACTOR SHALL COORDINATE INSTALLATION WITH N.M.G.C. AND MEET MINIMUM CLEARANCES OF OTHER SERVICES PER CITY AND NMGC CODES/STANDARDS.
- CONSTRUCT DRIVEPAD PER COA STD. DWG. 2425. SEE DETAIL FOR ELEV. OF W. DRIVEWAY AND SEE PLAN FOR ELEV. OF E. DRIVEWAY.

LEGEND

- SAS MANHOLE
- CLEANOUT
- FIRE HYDRANT
- WATER METER
- WATER VALVE
- GAS METER
- PROPERTY LINE
- PROPOSED FIRE SERVICE
- PROPOSED WATER SERVICE
- SAS
- PROPOSED SANITARY SEWER
- PROPOSED GAS
- PROPOSED ELECTRIC
- PROPOSED TELEPHONE
- EX OVERHEAD ELECTRIC LINE
- EX UNDERGROUND ELECTRIC LINE
- EX TELEPHONE LINE
- EX WATER LINE
- SAS
- EX SEWER LINE



CITY OF ALBUQUERQUE PUBLIC WORKS DEPARTMENT ENGINEERING DEVELOPMENT GROUP	
BEEHIVE HOMES LOTS 0-26, 0-27, AND 0-31-A VOLCANO CLIFFS, UNIT 1 UTILITY PLAN	
DESIGN REVIEW COMMITTEE	CITY ENGINEER APPROVAL
Mo./DAY/YR.	Mo./DAY/YR.
CITY PROJECT No. 772982	ZONE MAP NO. E-10-Z
SHEET 3R	OF 4

AS BUILT INFORMATION		BENCH MARKS		SURVEY INFORMATION		ENGINEER'S SEAL	
CONTRACTOR	DATE	STATION	DATE	NO.	BY	NO.	BY
Fierro & Company	10/2/2018	N=1511.153.313 E=1505.010.856 ELEV =5123.285 (NAVD 1988)	14-E11"	2	RJF	10-2-18	RJF
STARTED BY	DATE	ACCEPTANCE BY	DATE	1	RJF	1-18-18	RJF
FIELD LOCATION BY	DATE	DRAWINGS	DATE	NO.	DATE	REVISIONS	BY
CORRECTED BY	DATE	NO.	DATE	NO.	DATE	DESIGN	DATE
RECORDED BY	DATE	NO.	DATE	NO.	DATE	DRAWN BY	DATE
NO.	DATE	NO.	DATE	NO.	DATE	CHECKED BY	DATE
NO.	DATE	NO.	DATE	NO.	DATE	NO.	DATE



**As-Built**  
"Recorded Drawing"

SWPPP GENERAL NOTES:

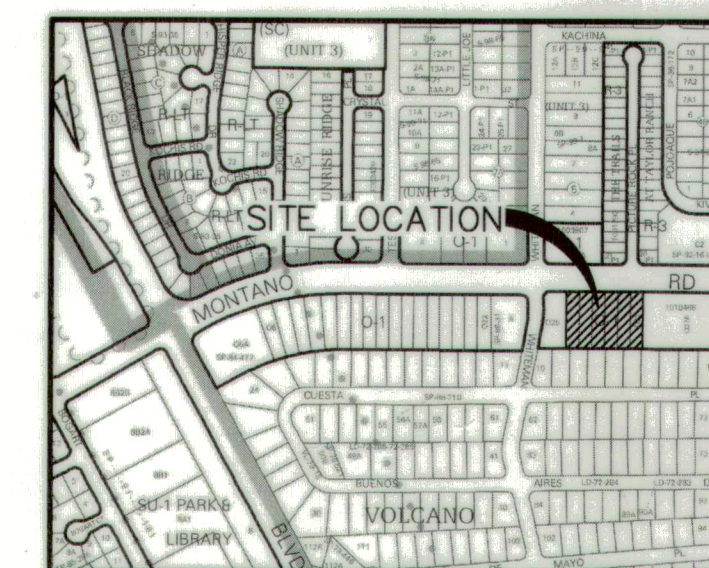
1. THE CONTRACTOR SHALL CONFORM TO ALL CITY, COUNTY, STATE AND FEDERAL STANDARDS AND EROSION CONTROL REGULATIONS. THE CONTRACTOR SHALL PREPARE AND OBTAIN ANY NECESSARY DUST OR EROSION CONTROL PERMITS FROM REGULATORY AGENCIES.
2. THE CONTRACTOR SHALL PROMPTLY REMOVE ANY MATERIAL EXCAVATED WITHIN THE PUBLIC RIGHT-OF-WAY TO KEEP IT FROM WASHING OFF THE PROJECT SITE.
3. THE CONTRACTOR SHALL ENSURE THAT NO SOIL ERODES FROM THE SITE ONTO OTHER PROPERTY.
4. THE CONTRACTOR SHALL WET THE SOIL AS NEEDED TO KEEP IT FROM BLOWING. WATERING, AS REQUIRED FOR CONSTRUCTION AND DUST CONTROL.
5. ANY AREAS DISTURBED BY CONSTRUCTION AND NOT COVERED BY LANDSCAPING OR ANY IMPERVIOUS SURFACE SHALL BE REVEGETATED WITH NATIVE GRASS SEEDING. WHEN CONSTRUCTION ACTIVITIES CEASE AND EARTH DISTURBING ACTIVITIES WILL NOT RESUME WITHIN 21 DAYS, STABILIZATION MEASURES MUST BE INITIATED. UNLESS INDICATED OTHERWISE ON THESE PLANS OR ON THE LANDSCAPING PLAN, NATIVE GRASS SEEDING SHALL BE CLASS A SEEDING PER SECTION 1011 AND 1012 OF THE NMAPWA STANDARD SPECIFICATIONS FOR PUBLIC WORKS CONSTRUCTION.
6. THE CONTRACTOR WILL REPORT AND RESPOND TO ANY SPILLS OF HAZARDOUS MATERIALS SUCH AS GASOLINE, DIESEL, MOTOR OILS, SOLVENTS, CHEMICALS, TOXIC OR CORROSIVE SUBSTANCES, ETC. A SPILL IS DEFINED AS ANY RELEASED OF A CORROSIVE, HAZARDOUS, TOXIC OR RADIOACTIVE SUBSTANCE THAT MAY BE A THREAT TO PUBLIC HEALTH OR THE ENVIRONMENT. REPORTS OF SPILL WILL BE MADE IMMEDIATELY TO BOTH THE NEW MEXICO ENVIRONMENTAL DEPARTMENT EMERGENCY RESPONSE TEAM (505-827-4308 OR 505-470-3657). THE CONTRACTOR WILL BE RESPONSIBLE FOR REPORTING AND CLEANUP OF ANY SPILL ASSOCIATED WITH PROJECT CONSTRUCTION. THE CONTRACTOR WILL BE RESPONSIBLE FOR REPORTING ANY DISCOVERIES OF PAST SPILLS OR CURRENT SPILLS NOT ASSOCIATED WITH CONSTRUCTION.
7. WHERE STORM INLETS ARE SUSCEPTIBLE TO INFLOW OF SILT OR DEBRIS FROM CONSTRUCTION ACTIVITIES, PROTECTION SHALL BE INSTALLED ON THEIR UPSTREAM SIDE.
8. THE GENERAL CONTRACTOR WILL BE THE SITE OPERATOR AND IS RESPONSIBLE FOR IMPLEMENTATION OF ALL STORM WATER POLLUTION CONTROL MEASURES.
9. THE CONTRACTOR IS RESPONSIBLE TO PROVIDE A MINIMUM OF ONE SOLID WASTE DISPOSAL RECEPTACLE AND HAVE THIS RECEPTACLE EMPTIED BY A CONTRACT TRASH DISPOSAL SERVICE AND HAULED AWAY FROM THE SITE AS NECESSARY. NO SOLID MATERIALS, INCLUDING BUILDING MATERIALS ARE ALLOWED TO BE DISCHARGED FROM THE SITE WITH STORM WATER. ALL SOLID WASTE, INCLUDING DISPOSABLE MATERIALS INCIDENTAL TO THE MAJOR CONSTRUCTION ACTIVITIES, MUST BE COLLECTED AND PLACED IN THESE RECEPTACLES. THE LOCATION IS TO BE DETERMINED IN THE FIELD.
10. IF UNFORESEEN ENVIRONMENTAL CONDITIONS ARE ENCOUNTERED, ADDITIONAL EROSION AND SEDIMENTATION CONTROL MEASURES MAY BECOME NECESSARY. THE CONTRACTOR SHALL BE RESPONSIBLE TO AMEND THE SWPPP WHENEVER THERE IS A CHANGE IN DESIGN, CONSTRUCTION, OPERATION OR MAINTENANCE THAT COULD DISCHARGE POLLUTION TO THE WATERS. BEFORE THE NEXT STORM EVENT, ADDITIONAL EROSION AND CONTROL MEASURES MAY ALSO BE REQUESTED BY THE OWNER, LOCAL AUTHORITY, PROJECT ENGINEER, OR SOIL CONSERVATION SERVICE REPRESENTATIVE. SUCH REQUEST SHALL BE IMPLEMENTED IMMEDIATELY AT CONTRACTOR'S EXPENSE.
11. CONTRACTOR WILL INSPECT STORM WATER POLLUTION CONTROL MEASURES AFTER EACH RAIN EVENT AND MAKE NECESSARY REPAIRS.

KEYED NOTES:

- 1 INSTALL SILT FENCE.
- 2 STABILIZE CONSTRUCTION ENTRANCE WITH CRUSHED STONE PER DETAIL 2/THIS SHEET.
- 3 CONSTRUCT TEMPORARY CONCRETE WASHOUT AREA PER DETAIL 1/THIS SHEET. EXACT LOCATION DETERMINED IN FIELD.
- 4 CONSTRUCT DESILATION POND MIN. 8" DEPTH. 3-5 INCHES CRUSHED STONE PLACED OVER NON-WOVEN GEOTEXTILE FILTER FABRIC.
- 5 PLACE STRAW LOGS ALONG GATE FRONTAGE. DO NOT ABUT GATE.
- 6 INSTALL WATTLE/FILTER SOCK DOWNHILL OF SAWCUT.
- 7 PLACE DIRT ON THE UPHILL SIDE OF SAWCUT.

### LEGEND

- 

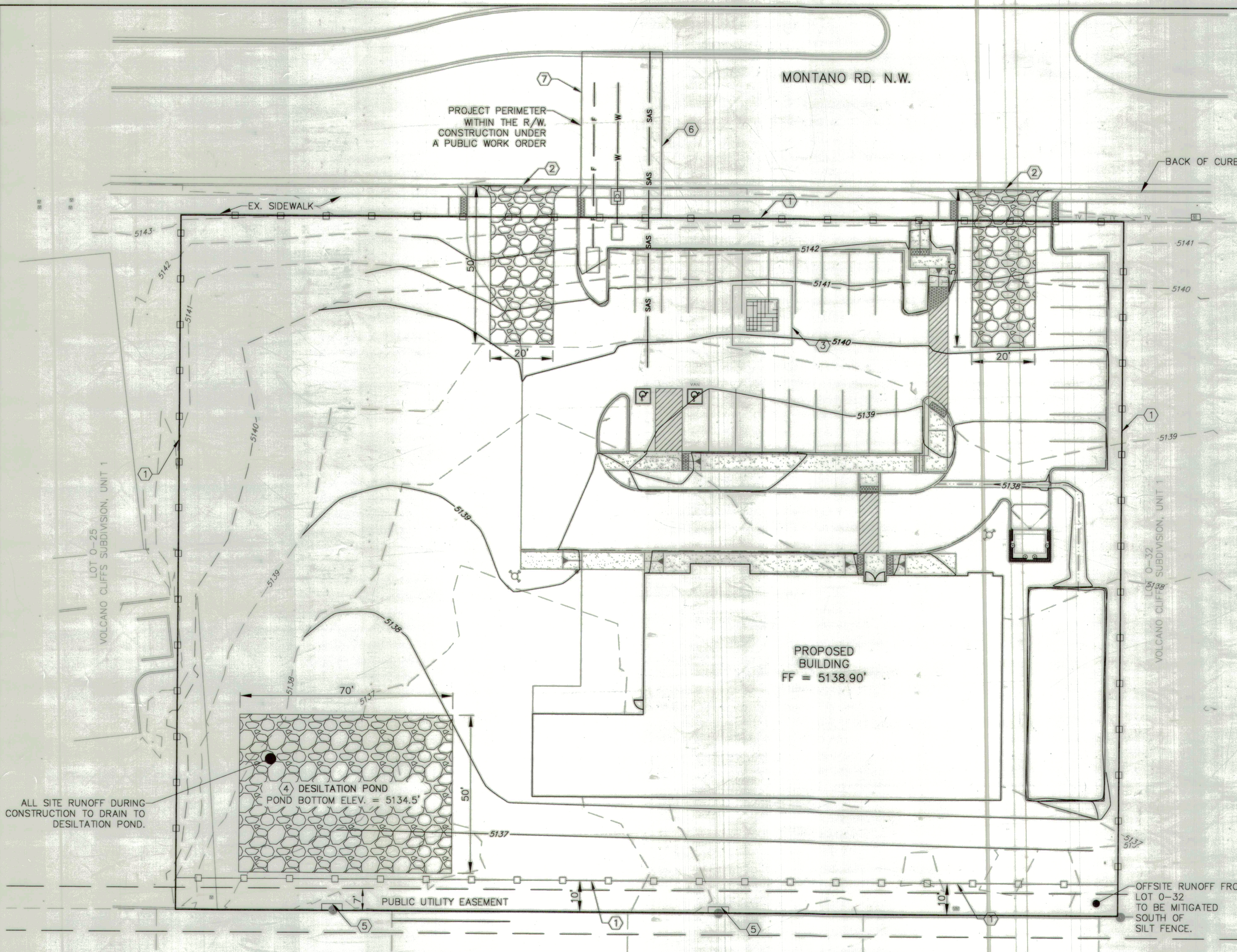


LOCATION  
ZONE ATLAS MAP: E-10-Z

GENERAL NOTES – STABILIZED ENTRANCE:

1. STONE SHALL BE 3 TO 5 INCHES IN DIA.  
CRUSHED ROCK.
2. THE WIDTH SHALL BE NO LESS THAN THE FULL  
WIDTH OF ALL POINTS OF INGRESS AND EGRESS.  
WHEN NECESSARY, BECHICLES SHALL BE CLEARED  
TO REMOVE SEDIMENT PRIOR TO ENTRANCE ONTO  
A PUBLIC ROADWAY. WHEN WASHING IS REQUIRED,  
IT SHALL BE DONE ON AN AREA STABILIZED WITH  
CRUSHED STONE WHICH DRAINAGE FLOWING AWAY  
FROM BOT THE STREET AND THE STABILIZED  
ENTRANCE.
4. ENTRANCE SHALL BE MAINTAINED IN A CONDITION  
WHICH WILL PREVENT TRACKING OR FLOWING OF  
SEDIMENT ONTO PAVED SURFACES. ALL SEDIMENT  
SPILLED, DROPPED, WASHED, OR TRACKED ONTO  
PAVED SURFACE MUST BE REMOVED IMMEDIATELY.

SWPP PLAN  
SCALE: 1"=20'



PLAN VIEW

2 STABILIZED CONSTRUCTION ENTRANCE  
SCALE: NTS

PROFILE VIEW

PAVED SURFACE

1 CONCRETE WASHOUT DETAIL  
SCALE: NTS

  
**Fierro & Company**  
ENGINEERING | SURVEYING  
5508 COSTA UERDE RD. NW  
ALBUQUERQUE, NEW MEXICO 87120  
PH (505) 352-8930  
[www.fierrocompany.com](http://www.fierrocompany.com)

CITY OF ALBUQUERQUE  
PUBLIC WORKS DEPARTMENT  
ENGINEERING DEVELOPMENT GROUP  
BEEHIVE HOMES  
LOTS 0-26, 0-27, AND 0-31-A VOLCANO CLIFFS, UNIT 1  
SWPP PLAN



DESIGN REVIEW COMMITTEE  
APPROVED  
DEC 01 2017  
DESIGN REVIEW COMMITTEE

CITY ENGINEER APPROVAL  
APPROVE  
JAN 04 2018  
CITY ENGINEER

Mo./DAY/YR.	Mo./DAY/YR.

CITY PROJECT No.  
772982

ZONE MAP NO.  
E-10-Z

SHEET	4	OF	4
-------	---	----	---