

IMPERIAL PARKING IMPROVEMENTS

GOLD AVENUE

2ND STREET

IMPERIAL BUILDING

SILVER

SILVER AVENUE

PAINT 35' OF CURB WITH
GREEN THERMOPLASTIC
PAINT FOR LOADING ZONE

INSTALL BASE POST AND "15 MINUTE
PARKING- LOADING AND UNLOADING
ONLY" SIGN. SEE IMAGE BELOW.



KEYED NOTES:

- 1) INSTALL WHITE THERMOPLASTIC SHARROW SYMBOL.
- 2) INSTALL 4" WHITE THERMOPLASTIC STRIPE HATCHED AT 45 DEGREES WITH SPACING OF 20' ON CENTER.
- 3) INSTALL 4" SOLID DOUBLE YELLOW THERMOPLASTIC PAVEMENT STRIPE.
- 4) INSTALL 4" SOLID WHITE THERMOPLASTIC STRIPE HATCHED AT 45 DEGREES WITH SPACING OF 5' ON CENTER.
- 5) INSTALL 4" SOLID WHITE THERMOPLASTIC STRIPE.
- 6) INSTALL 4" DASHED WHITE THERMOPLASTIC PUPPY TRACKS (2' STRIPE, 4' GAP).
- 7) REMOVE "RIGHT LANE MUST TURN RIGHT" SIGN.
- 8) INSTALL SINGLE HEAD, SOLAR-POWERED, PARKING METER.
- 9) INSTALL DOUBLE HEAD, SOLAR-POWERED, PARKING METER.
- 10) FIRE HYDRANT SHALL BE A MINIMUM OF 15' FROM DESIGNATED LOADING ZONE. INSTALL YELLOW PAINT ON CURB UP TO 15' AWAY FROM FIRE HYDRANT.
- 11) INSTALL WHITE THERMOPLASTIC CONTINENTAL CROSSWALK. STRIPES SHALL BE 10' LONG BY 2' WIDE, AND SPACED 5' ON CENTER.

IMPERIAL PARKING IMPROVEMENTS

SILVER

SILVER AVENUE



INSTALL BASE POST AND "15 MINUTE PARKING- LOADING AND UNLOADING ONLY" SIGN. SEE IMAGE BELOW.

KEYED NOTES:

- 1) INSTALL WHITE THERMOPLASTIC SHARROW SYMBOL.
- 2) INSTALL 4" WHITE THERMOPLASTIC STRIPE HATCHED AT 45 DEGREES WITH SPACING OF 20' ON CENTER.
- 3) INSTALL 4" SOLID DOUBLE YELLOW THERMOPLASTIC PAVEMENT STRIPE.
- 4) INSTALL 4" SOLID WHITE THERMOPLASTIC STRIPE HATCHED AT 45 DEGREES WITH SPACING OF 5' ON CENTER.
- 5) INSTALL 4" SOLID WHITE THERMOPLASTIC STRIPE.
- 6) INSTALL 4" DASHED WHITE THERMOPLASTIC PUPPY TRACKS (2' STRIPE, 4' GAP).
- 7) REMOVE NO PARKING SIGN.
- 8) INSTALL SINGLE HEAD, SOLAR-POWERED, PARKING METER.
- 9) INSTALL DOUBLE HEAD, SOLAR-POWERED, PARKING METER.
- 10) FIRE HYDRANT SHALL BE A MINIMUM OF 15' FROM DESIGNATED LOADING ZONE. INSTALL YELLOW PAINT ON CURB UP TO 15' AWAY FROM FIRE HYDRANT.
- 11) INSTALL WHITE THERMOPLASTIC CONTINENTAL CROSSWALK. STRIPES SHALL BE 10' LONG BY 2' WIDE, AND SPACED 5' ON CENTER.

PLATINUM

NICKEL

TITANIUM

LEAD

INSTALL THERMOPLASTIC "ONLY" WORD PAVEMENT MARKING.

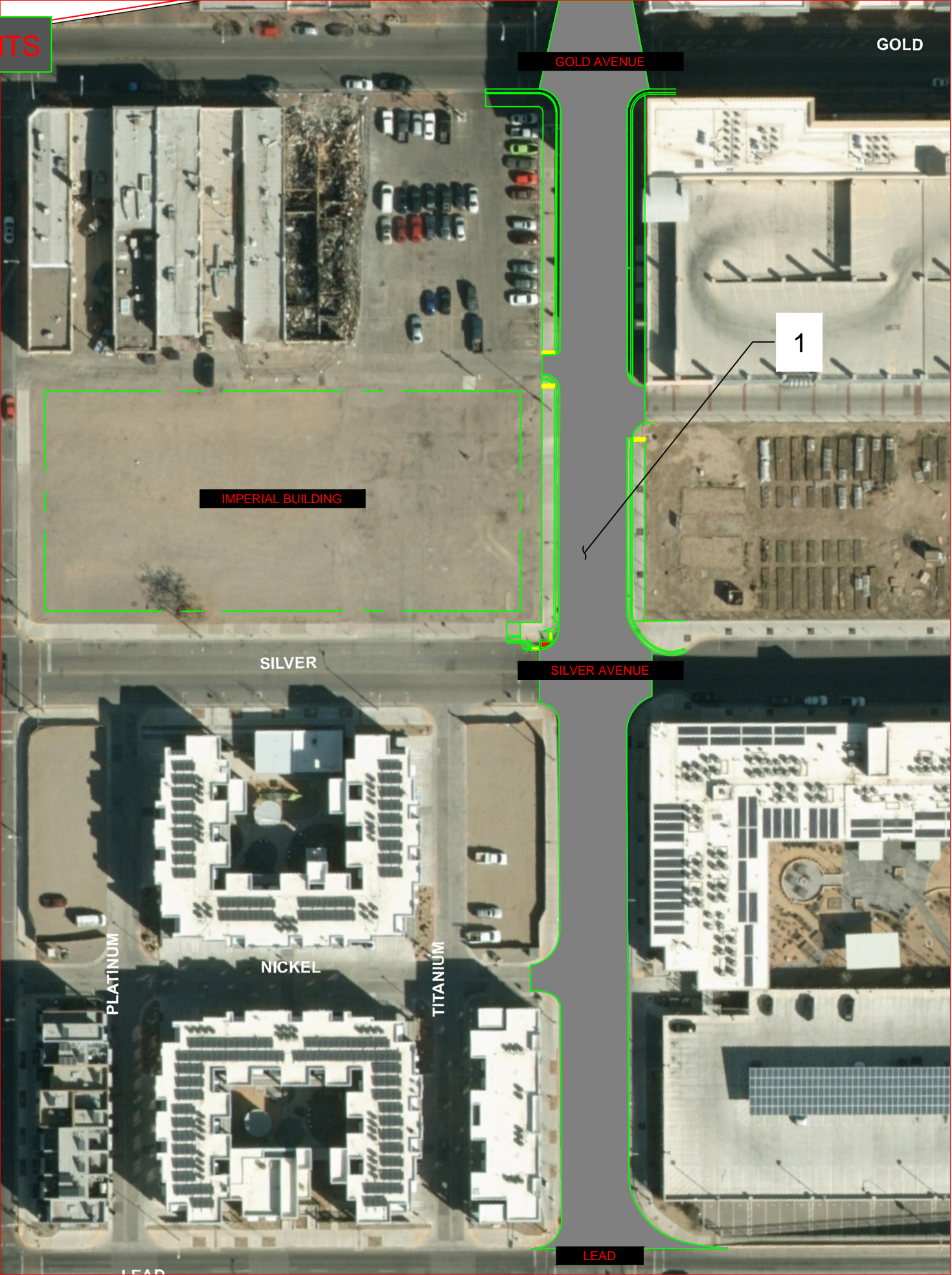
INSTALL THERMOPLASTIC "ONLY" WORD PAVEMENT MARKING.

INSTALL THERMOPLASTIC TURN LANE-USE ARROW.

INSTALL THERMOPLASTIC THROUGH LANE-USE ARROW.

LEAD

IMPERIAL PARKING IMPROVEMENTS



- KEYED NOTES:**
- 1) ERADICATE APPROXIMATELY 500 FEET OF 4" WHITE STRIPING, 700 FEET OF DOUBLE-YELLOW STRIPING, AND 5 SYMBOLS.