



MATTHEW MEADOWS PARK SHADE STRUCTURE ADDITION

CITY OF ALBUQUERQUE
MANAGING DEPARTMENT

DEPARTMENT OF MUNICIPAL DEVELOPMENT - PARK DESIGN AND CONSTRUCTION DIVISION

OWNER

PARKS AND RECREATION DEPARTMENT



CONSENSUS PLANNING, INC.

PLANNING / LANDSCAPE ARCHITECTURE

302 EIGHTH STREET NW

ALBUQUERQUE, NM 87102

(505) 764-9801

PROPERTY INFORMATION

LEGAL DESCRIPTION: MATTHEW MEADOWS PARK,

MATTHEW MEADOWS SUBDIVISION

PROPERTY ADDRESS: 3300 MATEO PRADO NW, 87107

METER ADDRESS: 1401 MATTHEW AVE. NW, 87107

ZONING: RA-2

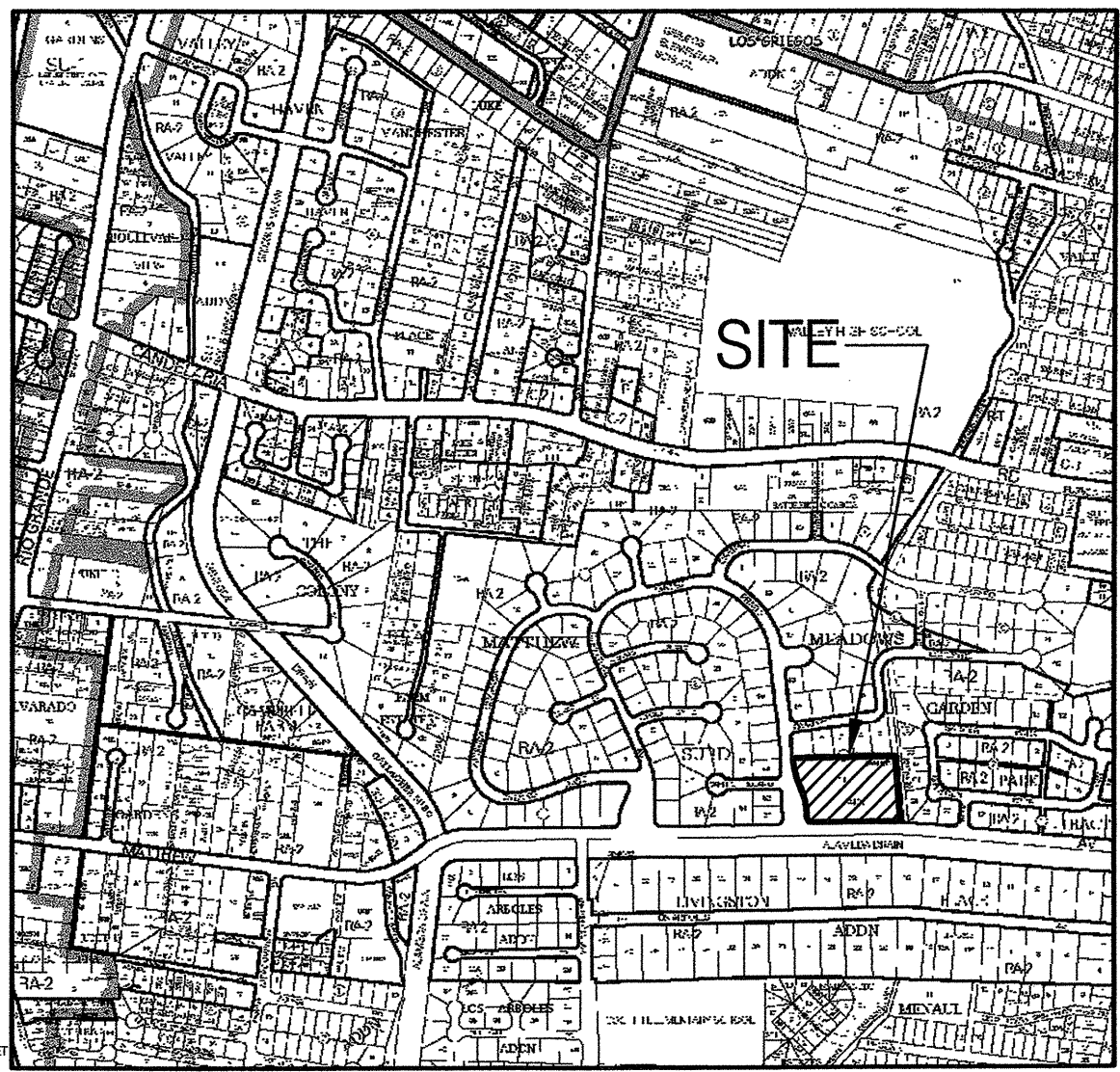
TOTAL SITE AREA: 3.847 AC.

TOTAL AREA OF RENOVATION: 1,916 SF

INDEX OF DRAWINGS

- 1 COVER SHEET
- 2 GENERAL NOTES
- 3 DEMOLITION PLAN/CONSTRUCTION PLAN
- 4 IRRIGATION PLAN
- 5 PROJECT INFORMATION FORMS

VICINITY MAP



UTILITY COMPANY CONTACTS

**CITY OF ALBUQUERQUE
(WATER & SEWER)**
NANCY MUSINSKI
Engineer/Utility Development
P.O. Box 1293
Albuquerque, New Mexico 87107
(505) 768-2729

PNM-ELECTRIC
JIM HILL
Engineering Representative
4201 Edith Boulevard NE
Albuquerque, New Mexico 87107
(505) 241-3581

PNM-GAS CO.
JOE DUNLAP
Project Engineer
4625 Edith Boulevard NE
Albuquerque, New Mexico 87107
(505) 241-7771

QWEST/US WEST
DAVID MULLER
Capacity Provisioning Specialist
400 Tijeras Ave. NW, Suite 710
Albuquerque, New Mexico 87102
(505) 245-8706

QWEST LONG DISTANCE
LARRY KELLY
Senior Operations Tech
400 Tijeras Ave. NW, Suite 710
Albuquerque, New Mexico 87102
(505) 246-0501

AT&T
DAVID CROWEL
Albuquerque, New Mexico 87103
P.O. Box 1293
Albuquerque, New Mexico 87103
(505) 842-2911

MCI WORLDWIDE
ANDY DARNELL
Operation Manager
6001 Midway Park NE
Albuquerque, New Mexico 87109
(505) 346-4470

COMCAST CABLE
RITA ERICKSON
Planning and Design Supervisor
4611 Montbel Pl. NE
Albuquerque, New Mexico 87107
(505) 761-6235

UNIVERSE ACCESS
JAMIE MARTINEZ
Resource Supervisor
505 Marquette Ave. NW, #119A
Albuquerque, New Mexico 87102
(505) 328-2675

B-SPIRE (ACSI)
JOHN MARES
505 Marquette Ave. NW, Suite 1605
Albuquerque, New Mexico 87102
(505) 998-2274

McLEOD USA
RICK MUELLER
Supervisor of Outside Techs.
505 Marquette Ave. NW, Suite 1600
Albuquerque, New Mexico 87102
(505) 244-3161

CityNet TELECOMMUNICATIONS
JOSH NELSON
Field Representative
13500 Coronado freeway
Albuquerque, New Mexico 87121
(505) 991-2120

TIME WARNER TELECOM
ROY HARRISON
Plant Manager
3830 Singer Blvd. NE, Suite 1000
Albuquerque, New Mexico 87109
(505) 938-7339

**LEVEL 3
COMMUNICATIONS, LLC**
STEVE GILMAN
Resource Supervisor
1025 Eldorado Blvd.
Broomfield, Colorado 80021
(720) 888-5920

EXPEDITUS MANAGEMENT CO.
STEVE BENJAMIN
Operations Support Manager
505 Marquette Ave. NW, Suite 1605
Albuquerque, New Mexico 87102
(505) 345-6555

OSO GRANDE TECHNOLOGIES
BUD LENSING
Resource Supervisor
505 Marquette Ave. NW, #119A
Albuquerque, New Mexico 87102
(505) 328-2675



REV.	SHEETS	CITY ENGINEER	DATE	USER DEPARTMENT	DATE	USER DEPARTMENT	DATE
ENGINEERS STAMP & SIGNATURE		APPROVED		ENGINEER		DATE	
		DRC Chairman				APPROVED FOR CONSTRUCTION	
		Transportation					
		Water/Wastewater					
		Hydrology					
		C I P					
		Constr. Mngmt.					
		Constr. Coord.				CITY ENGINEER DATE	
10-29-09				PROJECT NUMBER		783093	
				SHEET		1 OF 5	



FINAL FOR CONSTRUCTION

MATTHEW MEADOWS PARK
SHADE STRUCTURE ADDITION

PROJECT #783093
OCTOBER 29, 2009

Set # 1
Office Copy

RECORD DRAWINGS
Date: 11/3/09

- 1 FIVE (5) WORKING DAYS PRIOR TO BEGINNING CONSTRUCTION, THE CONTRACTOR WILL SUBMIT A DETAILED CONSTRUCTION SCHEDULE TO THE CITY CONSTRUCTION COORDINATION DIVISION. TWO (2) DAYS PRIOR TO CONSTRUCTION, THE CONTRACTOR WILL OBTAIN A BARRICADING PERMIT FROM THE CONSTRUCTION COORDINATION DIVISION. CONTRACTOR SHALL NOTIFY BARRICADE ENGINEER (924-3400) PRIOR TO OCCUPYING AN INTERSECTION. REFER TO SECTION 19 OF SPECIFICATIONS.
- 2 THE CONTRACTOR WILL NOTIFY THE FIELD ENGINEER NOT LESS THAN SEVEN (7) DAYS PRIOR TO STARTING WORK, IN ORDER THAT THE CITY SURVEY SECTION MAY TAKE NECESSARY MEASURES TO INSURE THE PRESERVATION OF SURVEY MONUMENTS. THE CONTRACTOR WILL NOTIFY THE ENGINEER IF A MONUMENT IS DISTURBED. REPLACEMENT WILL BE DONE ONLY BY THE CITY OF ALBUQUERQUE SURVEY SECTION AT THE CONTRACTOR'S EXPENSE. WHEN A CHANGE IS MADE IN THE FINISHED ELEV. OF THE PAVEMENT OF ANY ROADWAY IN WHICH A PERMANENT SURVEY MONUMENT IS LOCATED, CONTRACTOR WILL, AT HIS OWN EXPENSE, HAVE THE CITY SURVEY SECTION ADJUST THE MONUMENT COVER TO THE NEW GRADE UNLESS OTHERWISE SPECIFIED. REFER TO SECTION 4 OF SPECIFICATIONS.
- 3 THE SPECIFICATIONS USED FOR THIS PROJECT ARE THE CITY OF ALBUQUERQUE STANDARD SPECIFICATIONS FOR PUBLIC WORKS CONSTRUCTION, 1986 EDITION, UPDATE NO. 7.
- 4 ALL NEW MANHOLES SHALL BE TYPE "E" (COA DWG. 2102) UNLESS OTHERWISE NOTED ON THE PLANS.
- 5 THE CONTRACTOR WILL BE RESPONSIBLE FOR DISPOSING OF ALL DEBRIS, INCLUDING, BUT NOT LIMITED TO HAZARDOUS WASTE AT DISPOSAL SITES APPROVED BY GOVERNMENTAL AGENCIES REGULATING THE DISPOSAL OF SUCH MATERIALS.
- 6 ALL WATER VALVE BOXES AND MANHOLES IN THE STREET CONSTRUCTION ARE TO BE ADJUSTED TO FINISH GRADE AND WILL BE MEASURED AND PAID PER EACH.
- 7 SUBGRADE PREPARATION UNDER SIDEWALKS AND DRIVE PADS, AND SUBGRADE AND SUBBASE PREPARATION UNDER CURB AND GUTTER IS CONSIDERED INCIDENTAL TO THE CONSTRUCTION OF SUCH, AND NO DIRECT PAYMENT SHALL BE MADE FOR THOSE ITEMS OF WORK.
- 8 THE CONTRACTOR WILL REPLACE ANY STRIPPING THAT HAS BEEN RUINED OR REMOVED IN THE COURSE OF CONSTRUCTION.
- 9 ALL EXCAVATION WILL BE GOVERNED BY FEDERAL, STATE AND LOCAL LAWS, RULES, AND REGULATIONS CONCERNING CONSTRUCTION SAFETY AND HEALTH.
- 10 ALL SIGNS AND CODING WILL BE IN ACCORDANCE WITH THE "MANUAL OF UNIFORM TRAFFIC CONTROL DEVICES FOR STREETS AND HIGHWAYS" CURRENT EDITION PUBLISHED BY THE U.S. DEPARTMENT OF TRANSPORTATION.
- 11 THE CONTRACTOR IS TO EXERCISE CARE TO AVOID DISTURBING ANY EXISTING UNDERGROUND UTILITIES. IT WILL BE HIS RESPONSIBILITY TO COORDINATE WITH THE UTILITY COMPANIES IN ORDER TO PREVENT ANY SERVICE DISRUPTION. SEE SECTION 18 "UTILITIES", CITY OF ALBUQUERQUE, STANDARD SPECIFICATIONS FOR CONTRACTOR REQUIREMENTS.
- 12 WHEN ABUTTING NEW PAVEMENT TO EXISTING INTERSECTING STREETS, SAW CUT EXISTING PAVEMENT TO A STRAIGHT LINE AND AT RIGHT ANGLES AND REMOVE ANY BROKEN OR CRACKED PAVEMENT. NO DIRECT PAYMENT WILL BE MADE FOR SAW CUTTING.
- 13 ALL GAS VALVES, GAS MANHOLES, ELECTRICAL MANHOLES, TELEPHONE MANHOLES, AND UTILITY POLES WILL BE ADJUSTED TO GRADE BY EACH UTILITY COMPANY. CONTRACTOR WILL COORDINATE THROUGH CITY UTILITY COORDINATOR.
- 14 WHEN REMOVAL OF EXISTING CURB AND GUTTER OR SIDEWALK IS REQUIRED, REMOVE BACK TO NEAREST SUITABLE JOINT UNLESS OTHERWISE DIRECTED BY THE CITY FIELD ENGINEER.
- 15 THE CONTRACTOR WILL NOTIFY THE NEW MEXICO ONE CALL SYSTEM 260-1990 TWO (2) WORKING DAYS PRIOR TO COMMENCING WORK IN NEW AREAS.
- 16 CONTRACTOR WILL MAKE ALL WATER VALVES AND MANHOLES ACCESSIBLE TO THE CITY AT ALL TIMES.
- 17 CONTRACTOR WILL PLACE BITUMINOUS MATERIAL WITH THE USE OF A LAYDOWN MACHINE WHERE PAVEMENT IS 8 FEET IN WIDTH OR WIDER.
- 18 ALL SUBGRADE AND SUBBASE MATERIAL ENCOUNTERED IN PAVEMENT REMOVAL AND REPLACEMENT THAT IS DETERMINED BY THE FIELD ENGINEER TO MEET THE SPECIFICATIONS, CAN BE REUSED. HOWEVER, THE MATERIAL WILL BE PROCESSED AND COMPACTED TO MEET MOISTURE CONTENT AND PERCENT COMPACTION REQUIRED BY THE SPECIFICATIONS.
- 19 CONTRACTOR WILL NOT PAVE OVER ANY SURFACE FEATURE, I.E., GAS VALVE, MANHOLE COVER, ETC. WITHOUT PRIOR APPROVAL FROM THE CITY FIELD ENGINEER.
- 20 CONTRACTOR WILL CONFINE HIS WORK WITHIN THE CONSTRUCTION EASEMENT LIMITS AND/OR RIGHT-OF-WAY, OR PROVIDE COPIES OF AGREEMENTS WITH ADJACENT LANDOWNERS TO THE CITY OF ALBUQUERQUE.
- 21 ALL WATER VALVES AND FIRE HYDRANTS REMOVED TO BE SALVAGED AND RETURNED TO THE C.O.A.
- 22 MINIMUM BOTTOM WIDTH OF TRENCHES FOR RIGID PIPE SHALL BE EQUAL TO THE OUTSIDE DIAMETER PLUS 16 INCHES. BEDDING MATERIAL SHALL BE CLASS II, III, OR IV UNLESS OTHERWISE SPECIFICALLY NOTED ON THE PLANS.
- 23 MINIMUM BOTTOM WIDTH OF TRENCHES FOR NON-RIGID PIPE SHALL BE EQUAL TO THE OUTSIDE DIAMETER PLUS 12 INCHES. BEDDING MATERIAL SHALL BE CLASS I, II, OR III.
- 24 THE CONTRACTOR AGREES TO TAKE NECESSARY SAFETY PRECAUTIONS AS REQUIRED BY FEDERAL, STATE AND LOCAL AUTHORITIES TO PROTECT PEDESTRIAN AND VEHICULAR TRAFFIC IN THE CONSTRUCTION AREA, WHICH INCLUDE BUT ARE NOT LIMITED TO: MAINTAINING ADEQUATE WARNING SIGNS, BARRICADES, LIGHTS, GUARD FENCES, WALKS AND BRIDGES.
- 25 ALL STRUCTURAL CONCRETE WILL BE 3000 PSI UNLESS OTHERWISE NOTED ON PLANS.
- 26 ALL REINFORCING STEEL WILL BE GRADE 60.
- 27 ALL EXPOSED EDGES ON CAST-IN-PLACE CONCRETE STRUCTURES WILL HAVE A 1" CHAMFER UNLESS OTHERWISE NOTED.
- 28 ALL SPLICES IN REINFORCING STEEL TO BE 2-FOOT 6-INCH MINIMUM UNLESS OTHERWISE NOTED.

- 29 PRIOR TO CONSTRUCTION, THE CONTRACTOR WILL EXCAVATE AND VERIFY THE HORIZONTAL AND VERTICAL LOCATIONS OF ALL POTENTIAL CONFLICTING UTILITIES. SHOULD A CONFLICT EXIST BETWEEN THE FIELD INFORMATION AND THE PLANS, THE CONTRACTOR WILL NOTIFY THE FIELD ENGINEER SO THE CONFLICT CAN BE RESOLVED WITH MINIMUM AMOUNT OF DELAY.
- 30 THE REPLACEMENT OF THE EXISTING UTILITIES AND THE INSTALLATION OF NEW UTILITY LINES WILL BE COMPLETED IN ADVANCE OF STARTING THE PAVEMENT WORK. TEMPORARY PAVEMENT WILL BE PLACED IN ALL TRENCHES REQUIRED FOR THE UTILITY REPLACEMENTS IN THOSE AREAS THAT MUST MAINTAIN TRAFFIC UNTIL THE FINAL PAVEMENT WORK STARTS IN EACH AREA. TEMPORARY STRIPING SHALL BE THE CONTRACTOR'S RESPONSIBILITY. MAINTENANCE OF THE TEMPORARY PAVING AND STRIPING WILL BE AT THE CONTRACTOR'S EXPENSE.
- 31 TACK COAT FOR SURFACE COURSE REQUIREMENTS WILL BE DETERMINED BY THE FIELD ENGINEER.
- 32 THE CONTRACTOR WILL CONTACT THE CITY OF ALBUQUERQUE TRAFFIC DIVISION 857-8025, ONE (1) WEEK IN ADVANCE OF ANY CHANGES REQUIRED IN THE TRAFFIC SIGNALIZATION OF THIS PROJECT. ALL WORK ASSOCIATED WITH NEW TRAFFIC SIGNALIZATION SHALL BE THE RESPONSIBILITY OF THE CONTRACTOR.
- 33 ALL NEW STREET PAVING, DRIVEWAYS, SIDEWALKS, AND CURB AND GUTTERS, ABUTTING EXISTING AREAS SHALL MATCH THE ELEVATION OF THOSE AREAS.
- 34 PERMANENT PAVEMENT STRIPING AND MARKINGS WILL BE PLACED BY THE CONTRACTOR. ROAD SHALL NOT BE OPENED TO TRAFFIC UNTIL IT IS STRIPED. ALL STRIPING, PAVEMENT MARKINGS INCLUDING CROSSWALKS, ARROWS AND LINE MARKINGS ARE TO BE CONSTRUCTED OF HOT PLASTIC OR COLD PLASTIC IN ACCORDANCE WITH THE MANUAL OF UNIFORM TRAFFIC CONTROL DEVICES.
- 35 ALL EXCAVATED MATERIAL THAT IS NOT REQUIRED TO BE REUSED MUST BE REMOVED FROM THE PROJECT AREA WITHIN FOUR DAYS OF EXCAVATION. SPOIL PILES WILL BE ALLOWED ONLY AS DIRECTED BY THE CITY FIELD ENGINEER.
- 36 THE CONTRACTOR WILL COORDINATE THE CONSTRUCTION ACTIVITIES WITH ALL OTHER CONTRACTORS AND UTILITY COMPANIES WORKING IN THE SAME AREA. THE CONTRACTOR MAY BE REQUIRED TO RESCHEDULE THEIR ACTIVITIES TO ALLOW UTILITY CREWS TO PERFORM THEIR REQUIRED WORK. NO ADDITIONAL COMPENSATION WILL BE ALLOWED FOR DELAYS OR INCONVENIENCE CAUSED BY UTILITY COMPANY WORK CREWS. A CONTRACT EXTENSION MAY BE ALLOWED AS DELINEATED IN CITY OF ALBUQUERQUE STANDARD SPECIFICATIONS.
- 37 ALL CONSTRUCTION EASEMENTS ON PRIVATE PROPERTY WILL BE OBTAINED BY THE CITY OF ALBUQUERQUE PRIOR TO THE BEGINNING OF CONSTRUCTION.
- 38 EXISTING MEDIAN CURB AND GUTTER AND STANDARD CURB AND GUTTER, NOT DISTURBED BY CONTRACTOR, BUT OUT OF ALIGNMENT, DISPLACED VERTICALLY, BADLY BROKEN AND/OR DETERIORATED, WILL BE REPLACED AS DIRECTED BY THE FIELD ENGINEER AND PAID FOR AT CONTRACT UNIT PRICES.
- 39 ALL TRAFFIC CONTROL DEVICES REQUIRED FOR DRIVEWAY CLOSURES, UTILITY CONSTRUCTION OR FOR OTHER REASONS AND NOT SHOWN ON THE SIGNING PLANS WILL BE FURNISHED BY THE CONTRACTOR AND WILL BE PAID AS SPECIFIED IN THE TECHNICAL SPECIFICATIONS AND BID PROPOSAL. PRIOR TO PLACING THE TRAFFIC CONTROL DEVICES, THE CONTRACTOR WILL NOTIFY THE AFFECTED OWNERS IN ACCORDANCE WITH THE SPECIFICATIONS. CONTRACTOR MUST MAKE PROVISIONS TO PROVIDE ACCESS TO PROPERTIES. REFER TO SECTION 19 OF THE SPECIFICATIONS.
- 40 ALL UTILITY LINES WHICH ARE NOT SPECIFICALLY DESIGNATED TO BE REMOVED AND REPLACED ON THE PLANS, WILL BE MAINTAINED IN SERVICE. SHORING, SHEETING AND OTHER MEANS OF SUPPORT SHALL BE EMPLOYED BY THE CONTRACTOR TO PREVENT DAMAGE OR LOSS OF THESE EXISTING UTILITIES AND THESE SHORING, SHEETING, AND SUPPORTS ARE CONSIDERED INCIDENTAL TO THIS PROJECT. BEAM AND CABLE OR OTHER ADEQUATE SUPPORTS WILL BE USED FOR TEMPORARY SUPPORT OF ALL UTILITY LINES WHICH CROSS THE TRENCH. ANY DAMAGE TO EXISTING UTILITIES WILL PROMPTLY BE REPAIRED AT THE CONTRACTOR'S EXPENSE. THE CONTRACTOR WILL NOTIFY THE ENGINEER IMMEDIATELY OF ANY SIGNIFICANT DEVIATION OF EXPOSED UTILITIES FROM THE LOCATIONS SHOWN ON THE PLANS SO THAT CONFLICTS CAN BE RESOLVED IN A TIMELY MANNER.
- 41 THE CONTRACTOR WILL ASSUME RESPONSIBILITY FOR ANY DAMAGE TO EXISTING COA INFRASTRUCTURE (C & G, PAVING, ETC.) DURING CONSTRUCTION, APART FROM THOSE SECTIONS INDICATED FOR REMOVAL ON THE PLANS, AND WILL REPAIR OR REPLACE SAME AT HIS OWN EXPENSE. HE WILL SUITABLY PROTECT THE CURB AND GUTTER FROM INCIDENTAL SPLASHING DURING THE TACK COAT APPLICATION AND WILL BE RESPONSIBLE FOR CLEANING SAME AT HIS OWN COST SHOULD SPLASHING OCCUR.
- 42 ALL INTERFERING PORTIONS OF ABANDONED UTILITY LINES WHICH ARE EXPOSED AS A RESULT OF CONSTRUCTION WILL BE REMOVED AND DISPOSED OF BY THE CONTRACTOR.
- 43 STATIONS OF STORM DRAIN INLETS ARE TO THE CENTER OF GRATE. ALL STORM DRAIN INLETS WILL BE TYPE "A" UNLESS OTHERWISE NOTED ON THE PLANS.
- 44 SHORING COSTS WILL BE CONSIDERED INCIDENTAL TO THE TRENCH AND BACKFILL COSTS.
- 45 THE CONTRACTOR WILL BE RESPONSIBLE FOR SECURING NPDES PERMITS REQUIRED BY APPLICABLE CITY, STATE, AND FEDERAL REGULATIONS.
- 46 ALL STORM DRAIN AND CONNECTOR PIPE WILL BE CLASS IV REINFORCED CONCRETE PIPE UNLESS OTHERWISE NOTED ON THE PLANS.
- 47 THE TERM REMOVE USED IN THIS PLAN SET INCLUDES THE DISPOSAL OF SAID MATERIAL IN ACCORDANCE WITH CITY OF ALBUQUERQUE SPECIFICATIONS, LATEST EDITION.
- 48 CONTRACTOR WILL SURVEY AND LOG EXISTING ELEVATIONS OF CURB-AND-GUTTER, SIDEWALK, AND PAVEMENT WHICH WILL BE REMOVED FOR CONSTRUCTION OF IMPROVEMENTS. CONTRACTOR WILL REPLACE REMOVED CURB-AND-GUTTER, SIDEWALK, DRIVE PADS, AND PAVEMENT TO ELEVATIONS PRIOR TO REMOVAL UNLESS OTHERWISE INDICATED ON THE PLANS.
- 49 CONTRACTOR WILL CONSTRUCT TEMPORARY ASPHALT PAVEMENT AS DIRECTED BY THE FIELD ENGINEER TO PROVIDE ACCESS TO LOCAL BUSINESS, ETC. TEMPORARY PAVEMENT SHALL BE REMOVED AND DISPOSED OF PRIOR TO PLACEMENT OF FULL WIDTH PAVEMENT SECTION. TEMPORARY PAVING SHALL BE PER COA STD. DWG. 2415 AND PAID FOR PER COA STD. SPECIFICATIONS.

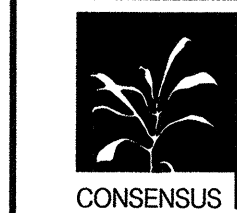
- 50 ALL CLASSES OF SEEDING SHALL BE DRY LAND MIX PLACED AT 1.5 LBS/1000 S.F. WITH FERTILIZER 21-12-12 PLACED AT 5 LBS/1000 S.F.
- 51 ALL ASPHALTIC CONCRETE SHALL BE MINIMUM 1800 LB. STABILITY AND COMPACTED TO 95% MODIFIED MARSHALL DENSITY UNLESS OTHERWISE NOTED ON THE PLANS.
- 52 ANY WORK OCCURRING WITHIN AN ARTERIAL ROADWAY REQUIRES TWENTY-FOUR (24) HOUR CONSTRUCTION.
- 53 ALL EXCAVATION, TRENCHING AND SHORING ACTIVITIES MUST BE CARRIED-OUT IN ACCORDANCE WITH OSHA 29 CFR 1926.650 SUBPART P.
- 54 THE CONTRACTOR SHALL BE RESPONSIBLE FOR TIMING AND COORDINATION OF WATER SHUTOFF AT LEAST SEVEN (7) WORKING DAYS PRIOR TO CONSTRUCTION. CONTRACTOR SHALL CONTACT THE WATER SYSTEMS DIVISION, 857-8200, TO INITIATE IMPLEMENTATION OF THE NON-PRESSURIZED CONNECTION PLAN.
- 55 FOR STORM DRAIN CONSTRUCTION, RCP PIPE JOINTS SHALL NOT BE GROUTED PRIOR TO FINAL INSPECTION. FINAL INSPECTION WILL DETERMINE JOINTS TO BE GROUTED FOR FINAL ACCEPTANCE OF THE CONSTRUCTION.
- 56 CONTRACTOR SHALL MAINTAIN A GRAFFITI-FREE WORK SITE. CONTRACTOR SHALL PROMPTLY REMOVE ANY AND ALL GRAFFITI FROM EQUIPMENT, WHETHER PERMANENT OR TEMPORARY.
- 57 CONTRACTOR SHALL ERECT TEMPORARY CHAIN LINK CONSTRUCTION FENCE. SUCH FENCE SHALL BE MAINTAINED THROUGHOUT THE DURATION OF THE CONSTRUCTION PERIOD AND REMOVED ONLY UPON FINAL ACCEPTANCE OF THE PROJECT BY THE CITY.
- 58 QUANTITIES PROVIDED ON THE PLANS ARE FOR THE CONTRACTOR'S CONVENIENCE ONLY. PLANS SHALL TAKE PRECEDENCE IN ALL CASES.

EXISTING FEATURES LEGEND:

- x — EXISTING T-POST/WIRE FENCE
- 2" HPG — EXISTING GAS LINE W/ VALVE
- 6" W — EXISTING WATERLINE W/ VALVE
- EXISTING WATERLINE METER
- EXISTING FIRE HYDRANT
- 6" SAS — EXISTING SANITARY SEWER LINE W/ MANHOLE
- 36" RCP — EXISTING STORM DRAIN
- OHE — EXISTING OVERHEAD ELECTRIC W/POLE
- UE — EXISTING UNDERGROUND ELECTRIC
- 44 — EXISTING 1' CONTOUR
- 4945 — EXISTING 5' CONTOUR
- ===== EXISTING CURB & GUTTER
- ===== EXISTING CONCRETE
- ===== EXISTING BUILDING LINE
- ===== EXISTING EASEMENT LINE

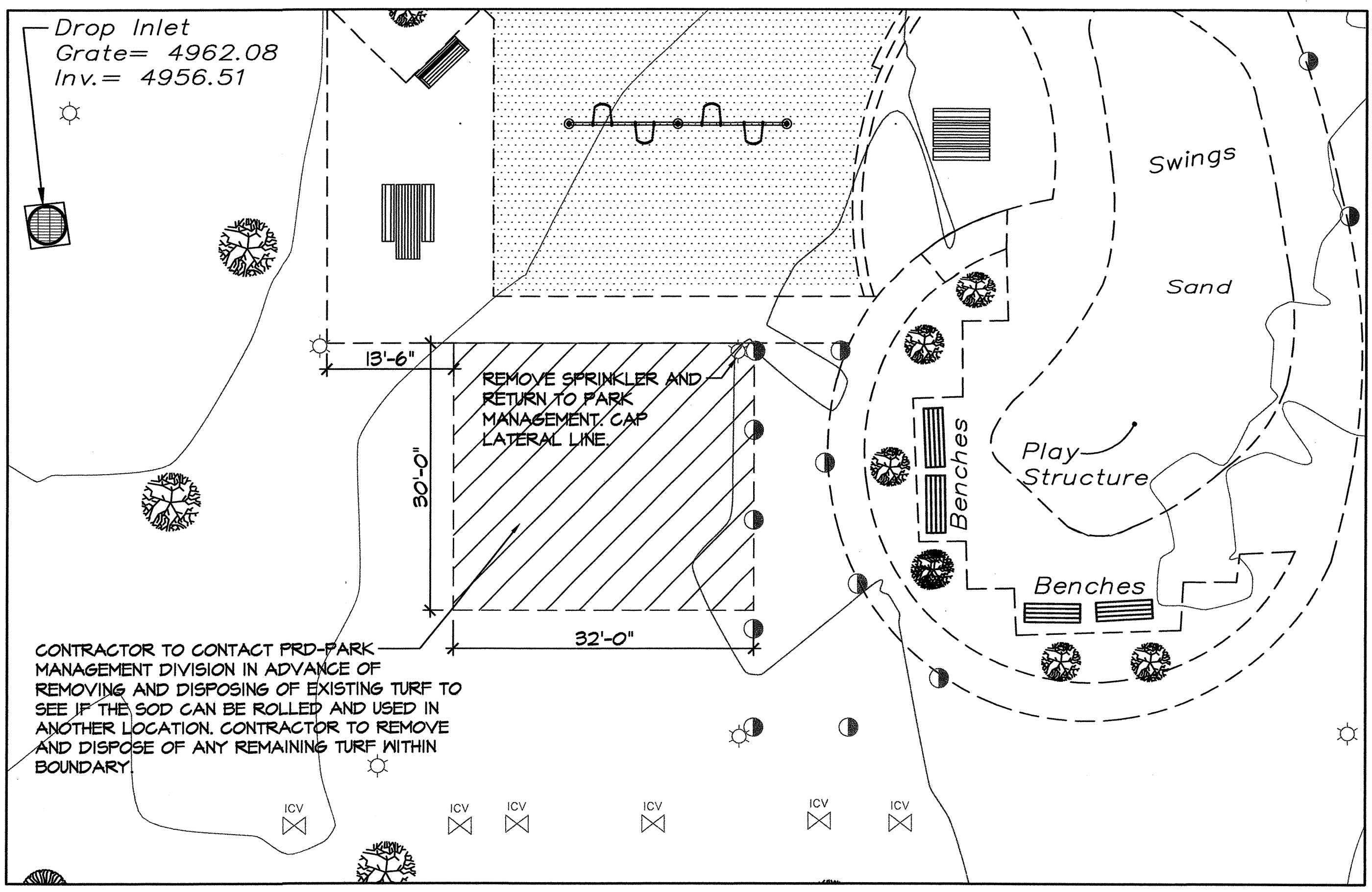
NEW FEATURES LEGEND:

- x — CONSTRUCTION CENTERLINE
- 2" HPG — NEW GAS LINE W/ VALVE
- 6" W — NEW WATERLINE W/ VALVE
- NEW WATERLINE METER
- NEW FIRE HYDRANT
- 6" SAS — NEW SANITARY SEWER LINE W/ MANHOLE
- NEW STORM DRAIN W/ MH
- ★ NEW UTILITY POLE
- NEW 1' CONTOUR
- 4945 — NEW 5' CONTOUR
- ===== NEW CURB & GUTTER
- ===== NEW CONCRETE

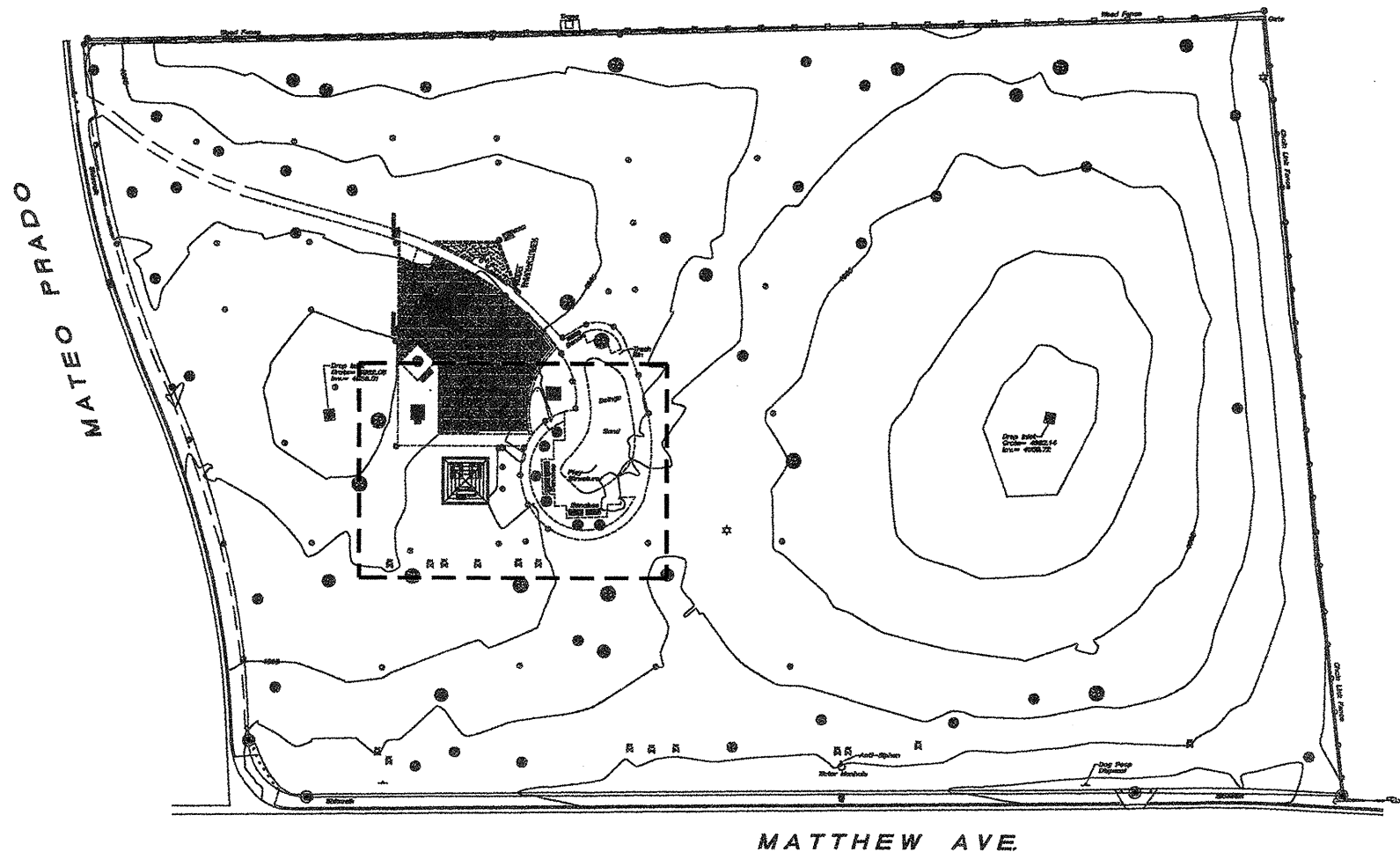


CONSENSUS PLANNING, INC.
Planning / Landscape Architecture
302 Eighth Street NW
Albuquerque, NM 87102
(505) 764-9801 Fax 842-5495
e-mail: cp@consensusplanning.com

CITY OF ALBUQUERQUE DEPARTMENT OF MUNICIPAL DEVELOPMENT PARK DESIGN AND CONSTRUCTION DIVISION			
TITLE: MATTHEW MEADOWS PARK SHADE STRUCTURE ADDITION			
GENERAL NOTES			
Design Review Committee	City Engineer Approval	Last Design Update	
		No. / Day / Yr.	
		No. / Day / Yr.	
		No. / Day / Yr.	
		No. / Day / Yr.	
City Project No.	783093	Zone Map No.	G-13
Sheet	2	of	5

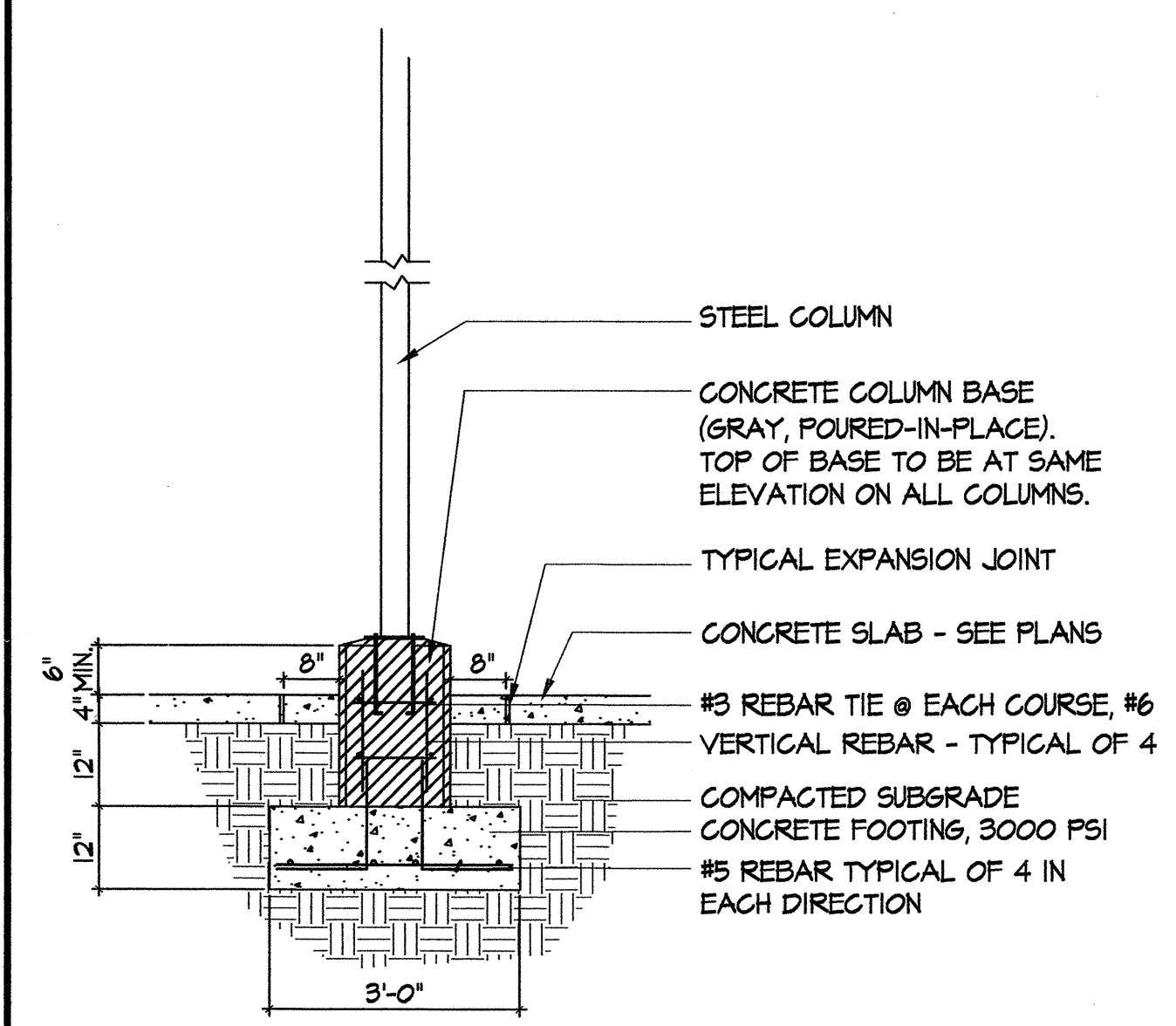


DEMOLITION PLAN

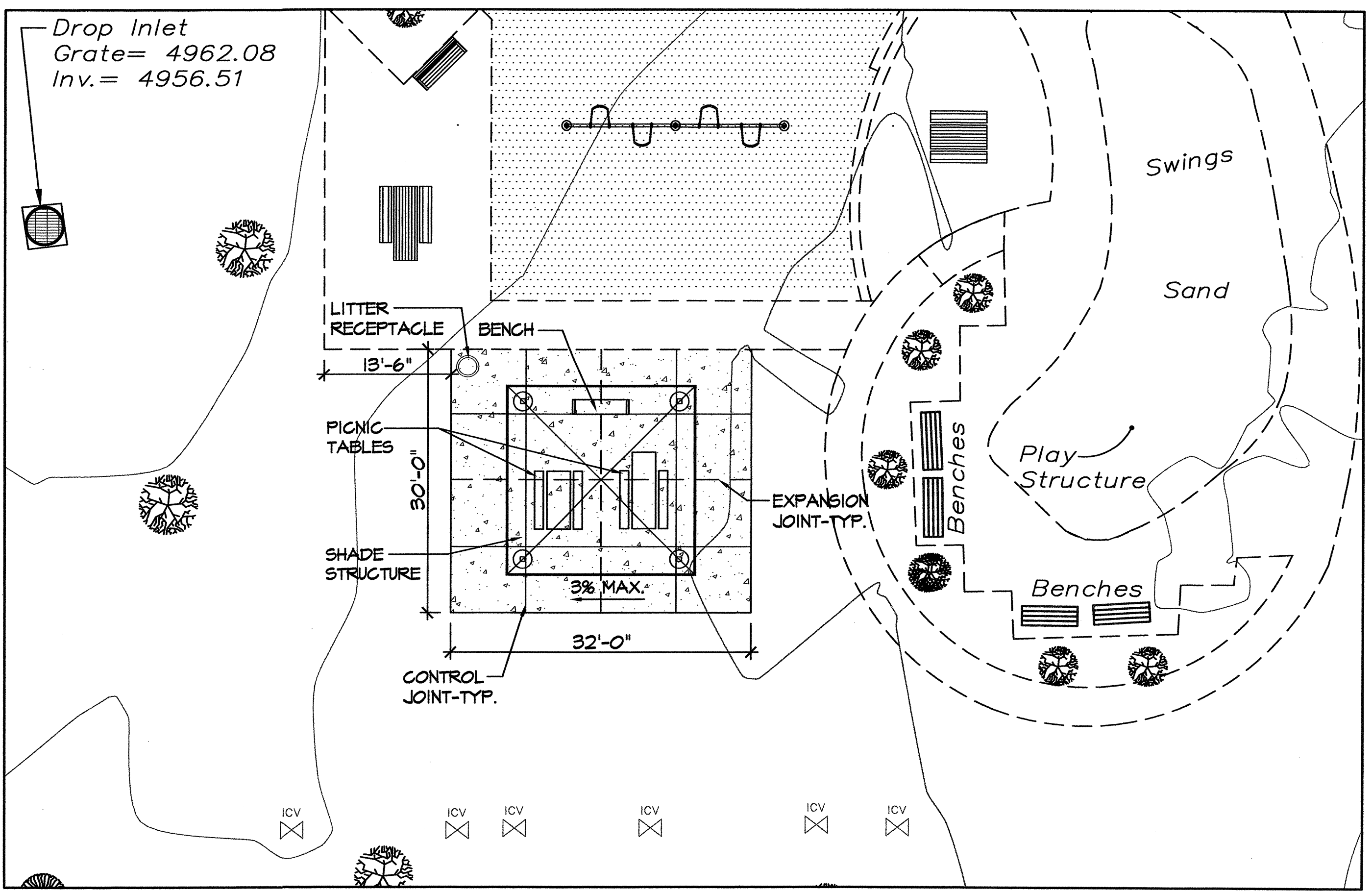


KEY MAP

- GENERAL NOTES
- A CONTRACTOR TO REVIEW AND COORDINATE ALL CONTRACT DOCUMENTS.
 - B CONTRACTOR TO NOTIFY LANDSCAPE ARCHITECT OF ANY DISCREPANCIES IN CONTRACT DOCUMENTS.
 - C CONTRACTOR TO NOTIFY LANDSCAPE ARCHITECT OF ANY DISCREPANCIES BETWEEN CONTRACT DOCUMENTS AND FIELD CONDITIONS.
 - D ALL SCREENED OR DASHED LINEWORK REPRESENTS EXISTING FEATURES.
 - E NEW CONCRETE SHALL BE POURED FLUSH WITH EXISTING CONCRETE. PROVIDE EXPANSION JOINT.



SHADE STRUCTURE COLUMN



CONSTRUCTION PLAN

- SITE AMENITIES LEGEND
- | QTY. | SYMBOL | DESCRIPTION |
|------|----------|---|
| 1 | [Symbol] | POLIGON SGR-20 20' STEEL FRAME SQUARE SHELTER. COLOR: EASTERN GREEN ROOF W/SURREY BEIGE FRAME. |
| 1 | [Symbol] | MCCLEINTOCK #R50-25 - TRASH RECEPTACLE. COLOR: GREEN. |
| 1 | [Symbol] | DUMOR 100-60PL-S-1 6' PICNIC TABLE (EMBEDMENT MOUNT). COLOR: BLACK FRAME W/REDWOOD PLASTIC. |
| 1 | [Symbol] | DUMOR 100-60PL-S-1 8' HANDICAP ACCESSIBLE PICNIC TABLE (EMBEDMENT MOUNT). COLOR: BLACK FRAME W/REDWOOD PLASTIC. |
| 1 | [Symbol] | DUMOR 103-60PL-S-1 6' BACKLESS BENCH (EMBEDMENT MOUNT). COLOR: BLACK FRAME W/REDWOOD PLASTIC. |
- NOTE: REMOVE EXISTING PARK SIGN AND REPLACE WITH NEW STANDARD METAL SIGN.

Scale: 1" = 10'

NORTH

5 0 10 20

CONSENSUS PLANNING, INC.
Planning / Landscape Architecture
302 Eighth Street NW
Albuquerque, NM 87102
(505) 764-9801 Fax 842-5495
e-mail: cp@consensusplanning.com

CITY OF ALBUQUERQUE
DEPARTMENT OF MUNICIPAL DEVELOPMENT
PARK DESIGN AND CONSTRUCTION DIVISION

TITLE: MATTHEW MEADOWS PARK SHADE STRUCTURE ADDITION
DEMOLITION/CONSTRUCTION PLAN

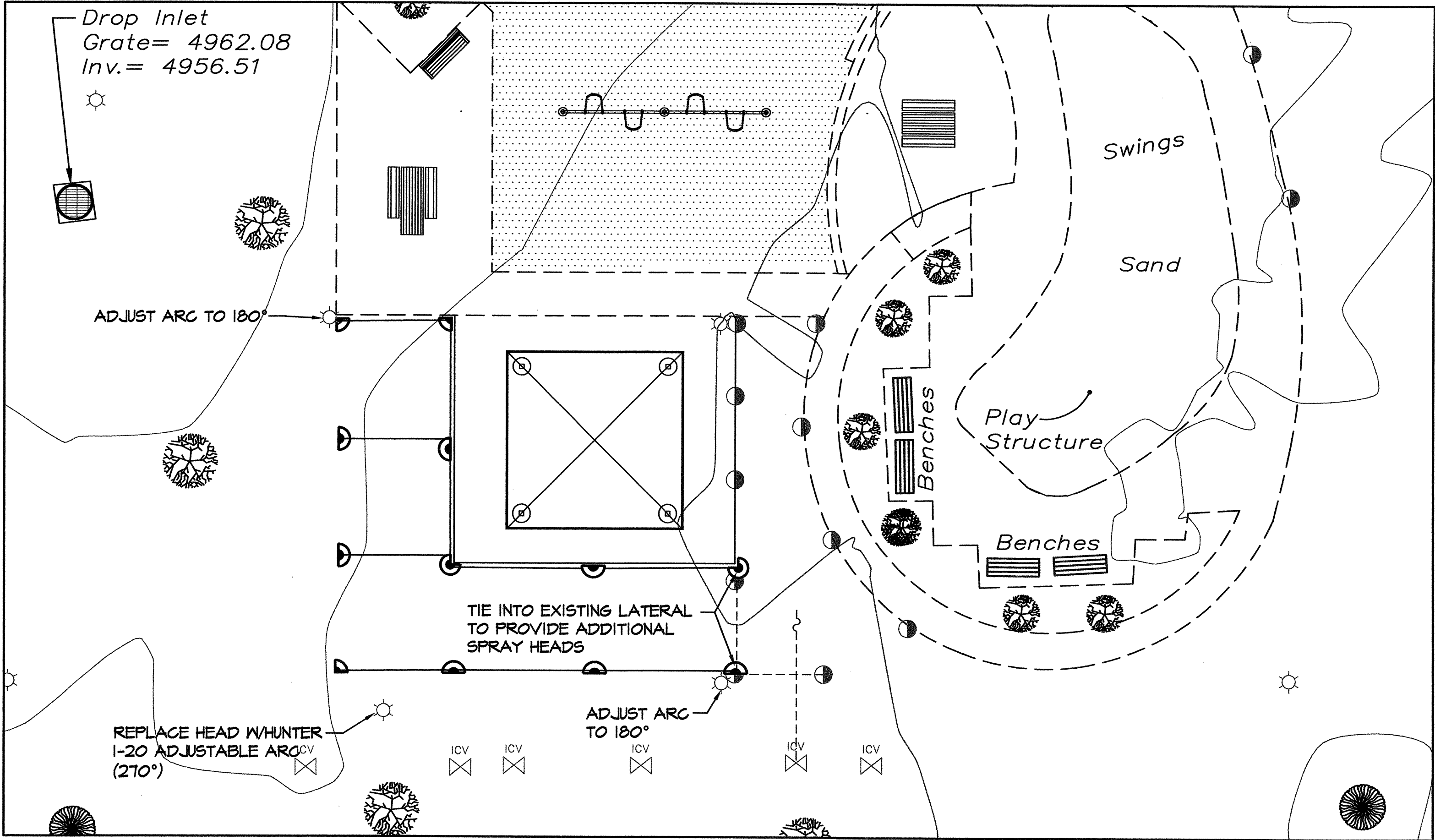
Design Review Committee	City Engineer Approval	Last Design Update	No. / Day / Yr.	No. / Day / Yr.
City Project No.	783093	Zone Map No.	G-13	Sheet 3 of 5

ENGINEERS SEAL

10.29.09

CHRISTOPHER J. GREEN
REGISTERED PROFESSIONAL ENGINEER
NO. 124

REMARKS	BY	DATE
DESIGN	CG	10/09
REVISIONS	MA	10/09
	CG	10/09



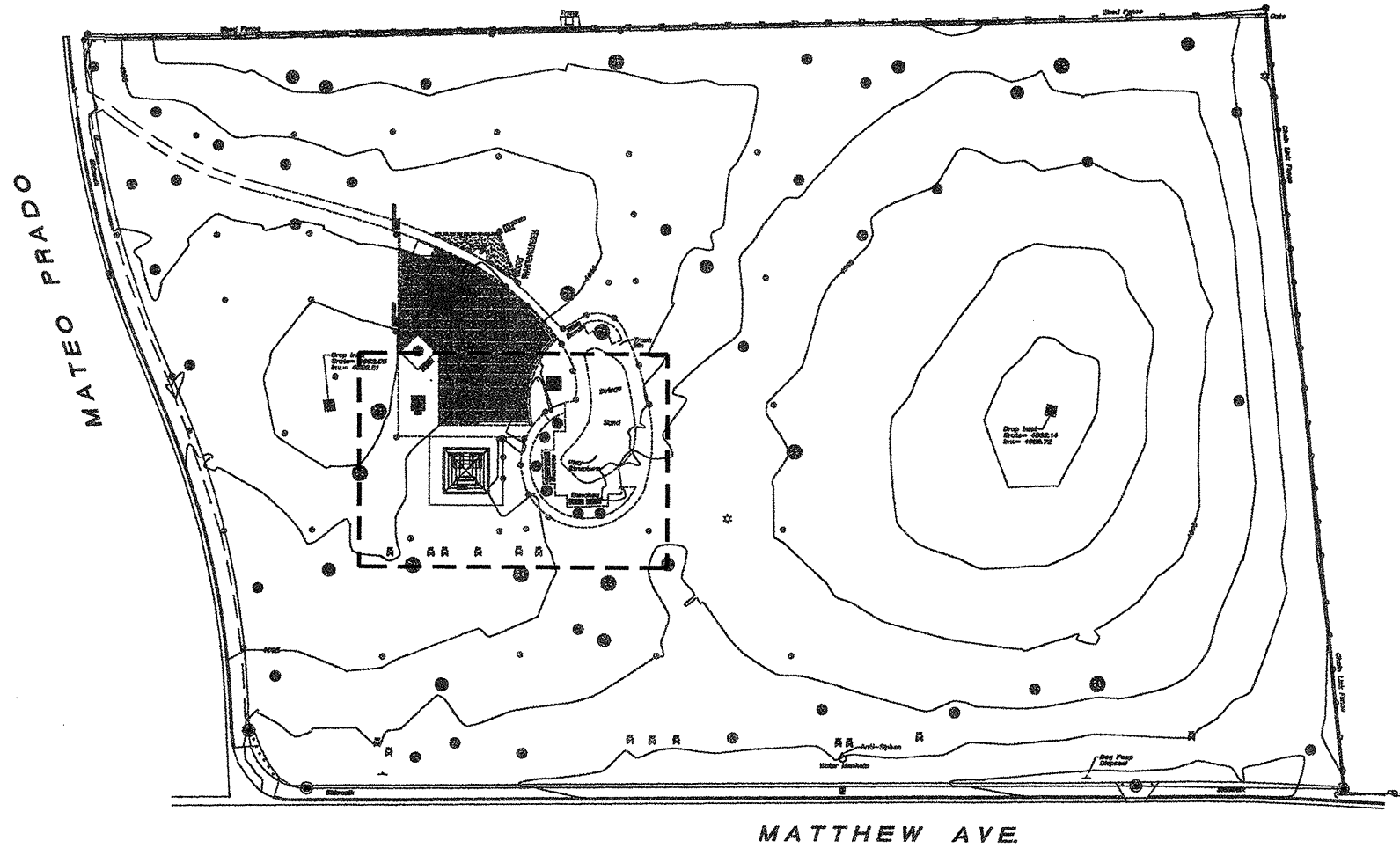
IRRIGATION PLAN

IRRIGATION LEGEND

- EXISTING VALVE
- EXISTING POP-UP SPRINKLER HEAD: RAIN BIRD 1804 SERIES
- EXISTING ROTOR HEAD: HUNTER I-20 SERIES
- POP-UP SPRINKLER: RAIN BIRD 1804 15 SERIES MPR
 - 15Q .92 GPM @ 30 PSI
 - 15H 1.85 GPM @ 30 PSI
 - 15TQ 2.16 GPM @ 30 PSI
- LATERAL PIPE: SCH. 40 PVC SOLVENT WELD
- EXISTING PVC LATERAL PIPE (ASSUMED LOCATION)

IRRIGATION NOTES

- THE SYSTEM WAS DESIGNED TO OPERATE WITH AN ASSUMED STATIC PRESSURE OF AT LEAST 65 PSI AT THE POINT-OF-CONNECTION. THE IRRIGATION CONTRACTOR SHALL VERIFY PRESSURE AND FLOW ON SITE PRIOR TO CONSTRUCTION.
- THE IRRIGATION CONTRACTOR SHALL BECOME THOROUGHLY FAMILIAR WITH THE SPECIFICATIONS FOR THIS AND RELATED WORK PRIOR TO CONSTRUCTION.
- THE IRRIGATION CONTRACTOR SHALL DETERMINE THE EXACT LOCATION OF UNDERGROUND UTILITIES AND ELECTRICAL WIRING PRIOR TO CONSTRUCTION.
- THE IRRIGATION CONTRACTOR SHALL NOT INSTALL THE IRRIGATION SYSTEM WHEN IT IS OBVIOUS IN THE FIELD THAT OBSTRUCTIONS OR GRADE DIFFERENCES EXIST THAT MIGHT NOT HAVE BEEN CONSIDERED IN THE ENGINEERING, OR IF DISCREPANCIES IN CONSTRUCTION DETAILS, LEGEND, NOTES, OR SPECIFICATIONS ARE DISCOVERED. ALL SUCH OBSTRUCTIONS OR DISCREPANCIES SHALL BE BROUGHT TO THE ATTENTION OF THE OWNER'S REPRESENTATIVE.
- THE DRAWINGS ARE DIAGRAMMATIC. IN SOME CASES IRRIGATION COMPONENTS MAY BE SHOWN OUTSIDE OF PLANTING AREAS FOR CLARITY. THE IRRIGATION CONTRACTOR SHALL AVOID ANY CONFLICTS BETWEEN THE IRRIGATION SYSTEM, PLANTING MATERIALS, AND ABOVE GROUND UTILITIES. IRRIGATION PIPE AND WIRING SHALL BE INSTALLED IN LANDSCAPE AREAS WHENEVER POSSIBLE.



KEY MAP

Scale: 1" = 10'

NORTH

5 0 10 20

CONSENSUS PLANNING, INC.
Planning / Landscape Architecture
302 Eighth Street NW
Albuquerque, NM 87102
(505) 764-9801 Fax 842-5495
e-mail: cp@consensusplanning.com

CITY OF ALBUQUERQUE
DEPARTMENT OF MUNICIPAL DEVELOPMENT
PARK DESIGN AND CONSTRUCTION DIVISION

TITLE: MATTHEW MEADOWS PARK SHADE STRUCTURE ADDITION
IRRIGATION PLAN

Design Review Committee	City Engineer Approval	Last Design Update	No. / Day / Yr.	No. / Day / Yr.
City Project No.	783093	Zone Map No. G-13	Sheet	4 of 5

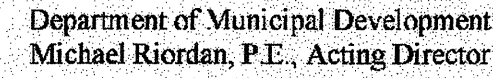
SURVEY INFORMATION		BENCH MARKS		AS-BUILT INFORMATION	
NO.	FIELD NOTES BY DATE			CONTRACTOR	
				WORKED BY	DATE
				INSPECTED BY	DATE
				PERFORMANCE BY	DATE
				VERIFICATION BY	DATE
				COMPLETED BY	DATE
MICRO-FILM INFORMATION					
				RECORDED BY	DATE
				NO.	

ENGINEER'S SEAL

10-29-09

CHRISTOPHER J. GREEN
#224
REGISTERED PROFESSIONAL ENGINEER

--	--	--	--	--	--	--	--	--	--	--	--	--	--	--	--	--	--	--	--	--	--	--	--	--	--	--	--	--	--	--	--	--	--	--	--	--	--	--	--	--	--	--	--	--	--	--	--	--	--	--	--	--	--	--	--	--	--	--	--	--	--	--	--	--	--	--	--	--	--	--	--	--	--	--	--	--	--	--	--	--	--	--	--	--	--	--	--	--	--	--	--	--	--	--	--	--	--	--	--	--	--	--	--	--	--	--	--	--	--	--	--	--	--	--	--	--	--	--	--	--	--	--	--	--	--	--	--	--	--	--	--	--	--	--	--	--	--	--	--	--	--	--	--	--	--	--	--	--	--	--	--	--	--	--	--	--	--	--	--	--	--	--	--	--	--	--	--	--	--	--	--	--	--	--	--	--	--	--	--	--	--	--	--	--	--	--	--	--	--	--	--	--	--	--	--	--	--	--	--	--	--	--	--	--	--	--	--	--	--	--	--	--	--	--	--	--	--	--	--	--	--	--	--	--	--	--	--	--	--	--	--	--	--	--	--	--	--	--	--	--	--	--	--	--	--	--	--	--	--	--	--	--	--	--	--	--	--	--	--	--	--	--	--	--	--	--	--	--	--	--	--	--	--	--	--	--	--	--	--	--	--	--	--	--	--	--	--	--	--	--	--	--	--	--	--	--	--	--	--	--	--	--	--	--	--	--	--	--	--	--	--	--	--	--	--	--	--	--	--	--	--	--	--	--	--	--	--	--	--	--	--	--	--	--	--	--	--	--	--	--	--	--	--	--	--	--	--	--	--	--	--	--	--	--	--	--	--	--	--	--	--	--	--	--	--	--	--	--	--	--	--	--	--	--	--	--	--	--	--	--	--	--	--	--	--	--	--	--	--	--	--	--	--	--	--	--	--	--	--	--	--	--	--	--	--	--	--	--	--	--	--	--	--	--	--	--	--	--	--	--	--	--	--	--	--	--	--	--	--	--	--	--	--	--	--	--	--	--	--	--	--	--	--	--	--	--	--	--	--	--	--	--	--	--	--	--	--	--	--	--	--	--	--	--	--	--	--	--	--	--	--	--	--	--	--	--	--	--	--	--	--	--	--	--	--	--	--	--	--	--	--	--	--	--	--	--	--	--	--	--	--	--	--	--	--	--	--	--	--	--	--	--	--	--	--	--	--	--	--	--	--	--	--	--	--	--	--	--	--	--	--	--	--	--	--	--	--	--	--	--	--	--	--	--	--	--	--	--	--	--	--	--	--	--	--	--	--	--	--	--	--	--	--	--	--	--	--	--	--	--	--	--	--	--	--	--	--	--	--	--	--	--	--	--	--	--	--	--	--	--	--	--	--	--	--	--	--	--	--	--	--	--	--	--	--	--	--	--	--	--	--	--	--	--	--	--	--	--	--	--	--	--	--	--	--	--	--	--	--	--	--	--	--	--	--	--	--	--	--	--	--	--	--	--	--	--	--	--	--	--	--	--	--	--	--	--	--	--	--	--	--	--	--	--	--	--	--	--	--	--	--	--	--	--	--	--	--	--	--	--	--	--	--	--	--	--	--	--	--	--	--	--	--	--	--	--	--	--	--	--	--	--	--	--	--	--	--	--	--	--	--	--	--	--	--	--	--	--	--	--	--	--	--	--	--	--	--	--	--	--	--	--	--	--	--	--	--	--	--	--	--	--	--	--	--	--	--	--	--	--	--	--	--	--	--	--	--	--	--	--	--	--	--	--	--	--	--	--	--	--	--	--	--	--	--	--	--	--	--	--	--	--	--	--	--	--	--	--	--	--	--	--	--	--	--	--	--	--	--	--	--	--	--	--	--	--	--	--	--	--	--	--	--	--	--	--	--	--	--	--	--	--	--	--	--	--	--	--	--	--	--	--	--	--	--	--	--	--	--	--	--	--	--	--	--	--	--	--	--	--	--	--	--	--	--	--	--	--	--	--	--	--	--	--	--	--	--	--	--	--	--	--	--	--	--	--	--	--	--	--	--	--	--	--	--	--	--	--	--	--	--	--	--	--	--	--	--	--	--	--	--	--	--	--	--	--	--	--	--	--	--	--	--	--	--	--	--	--	--	--	--	--	--	--	--	--	--	--	--	--	--	--	--	--	--	--	--	--	--	--	--	--	--	--	--	--	--	--	--	--	--	--	--	--	--	--	--	--	--	--	--	--	--	--	--	--	--	--	--	--	--	--	--	--	--	--	--	--	--	--	--	--	--	--	--	--	--	--	--	--	--	--	--	--	--	--	--	--	--	--	--	--	--	--	--	--	--	--	--	--	--	--	--	--	--	--	--	--	--	--	--	--	--	--	--	--	--	--	--	--	--	--	--	--	--	--	--	--	--	--	--	--	--	--	--	--	--	--	--	--	--	--	--	--	--	--	--	--	--	--	--	--	--	--	--	--	--	--	--	--	--	--	--	--	--	--	--	--	--	--	--	--	--	--	--	--	--	--	--	--	--	--	--	--	--	--	--	--	--	--	--	--	--	--	--	--	--	--	--	--	--	--	--	--	--	--	--	--	--	--	--	--	--	--	--	--	--	--	--	--	--	--	--	--	--	--	--	--	--	--	--	--	--	--	--	--	--	--	--	--	--	--	--	--	--	--	--	--	--	--	--	--	--	--	--	--	--	--	--	--	--	--	--	--	--	--	--	--	--	--	--	--	--	--	--	--	--	--	--	--	--	--	--	--	--	--	--	--	--	--	--	--	--	--	--	--	--	--	--	--	--	--	--	--	--	--	--	--	--	--	--	--	--	--	--	--	--	--	--	--	--	--	--	--	--	--	--	--	--	--	--	--	--	--	--	--	--	--	--	--	--	--	--	--	--	--	--	--	--	--	--	--	--	--	--	--	--	--	--	--	--	--	--	--	--	--	--	--	--	--	--	--	--	--	--	--	--	--	--	--	--	--	--	--	--	--	--	--	--	--	--	--	--	--	--	--	--	--	--	--	--	--	--	--	--	--	--	--	--	--	--	--	--	--	--	--	--	--	--	--	--	--	--	--	--	--	--	--	--	--	--	--	--	--	--	--	--	--	--	--	--	--	--	--	--	--	--	--	--	--	--	--	--	--	--	--	--	--	--	--	--	--	--	--	--	--	--	--	--	--	--	--	--	--	--	--	--	--	--	--	--	--	--	--	--	--	--	--	--	--	--	--	--	--	--	--	--	--	--	--	--	--	--	--	--	--	--	--	--	--	--	--	--	--	--	--	--	--	--	--	--	--	--	--	--	--	--	--	--	--	--	--	--	--	--	--	--	--	--	--	--	--



Subject: **Matthew Meadows Park-Shade Structure Addition** - **Substantial Completion - XX/XX/XX**
PRD, Park Management Division Accepts Maintenance Responsibility

Address:	3300 Matco Prado NW
	Albuquerque, NM

Park Zoning:	RA-2
--------------	------

... is officially assigned to the Park Management Division, Parks & Recreation Department, City of Albuquerque for maintenance. Outlined below is a description of work completed:

Acres Developed: 1.916 sf / .044 acres

Acres of Irrigated Turf	0	cool / warm season
Turf Removal:	0	square feet
Landscape Area Trees & Shrubs:	0	square feet
Tree Count:	0	Deciduous/Evergreen
Litter Receptacles	1	
Benches	1	
Picnic Tables	3	
Shade Structures	1	

Park property developed; per FINAL FOR CONSTRUCTION DOCUMENTS DATED 10/28/09 and COA specifications. New:

1. Site furnishings; (1) metal shade structures; (1) benches; (1) accessible picnic tables; (2) standard picnic tables; and (1) litter receptacle.
2. Hardscape: concrete sidewalks.

Project Manager: David M. Flores
Phone: (505) 768-3815
Email: dflores@cabq.gov
Fax: (505) 768-2310

Design Consultant: Consensus Planning
Address: 302 Eighth Street NW, Albuquerque, 87102
Project Manager: Chris Green, ASLA
Phone: (505) 764-9801
Email: cgreen@consensusplanning.com
Application: Design Liability

Landscape Architect of Record: Chris Green
Address: 302 Eighth Street NW, Albuquerque, 87102
Phone: (505) 764-9801
Email: cgreen@consensusplanning.com

Contractor:
Contact Name:
Phone:
Scope of Work:
Warranty: One (1) year labor and materials
Warranty Start Date: - Expiration Date: XX/XX/XX - XX/XX/XX

The following is a listing of all labor, vendors and product warranties pertaining to project: Matthew Meadows Park
During the first year all calls regarding warranty information will go to the contractor. After one year calls regarding warranty go directly to the vendor.

Vendor: Churchich Recreation, LLC Phone: (505) 401-3498 Application: Polygon Shade Structures Product: (1) 20' Square Structure Model #: 11X12-24, color: Red Baron roof w/black frame Manufacture structural warranty: 20 yrs.	Vendor: Exerplay Phone: (505) 281-0151 Application: DuMor Site Furnishings Product: (1) 6' backless bench Model #: 103-60PI -S-1, color: black w/redwood plastic Manufacture structural warranty: 1 year
--	---

Vendor: Exerplay Phone: (505) 281-0151 Application: DuMor Site Furnishings Product: (1) 8' Accessible Picnic Table Model #: 100-68PL-S-1, Color: black w/redwood plastic Manufacture structural warranty: 1 year	Vendor: Exerplay Phone: (505) 281-0151 Application: DuMor Site Furnishings Product: (1) 6' Standard Picnic Table Model #: 100-60PL-S-1, color: black w/redwood plastic Manufacture structural warranty: 1 year
---	---

Vendor: BearSaver Phone: (800) 350-5888 Application: Site Furnishings Product: (1) Trash receptacles Model#: RSO-25, color: green Manufacture structural warranty: 1 year	Vendor: Phone: Application: Product: Model#: Manufacture structural warranty:
--	--

Auditor:
Phone:
Inspector Name:
Inspection Date:
Products Inspected: All Play Equipment and Surfacing

Auditor:
Phone:
Inspector Name:
Inspection Date:
Products Inspected: Backflow Prevention Assembly

Auditor:
Phone:
Inspector Name:
Inspection Date:
Products Inspected: Landscape Irrigation Water Audit

Water Meter: Reading: _____ Address: _____ Serial Number: _____ Type: _____ Final billing date: _____ New Service JV: _____	Electric Meter: Reading: _____ Number: _____ Serial Number: _____ Type: _____
--	--

- Maintenance Documents
 - Keys (5-trash receptacles)
 - Benches
 - Tables
 - Play Structures
 - Shade Structures (engineered drawings and footing details)Lights
 - Booster Pump
 - Irrigation Controller
- Permits (date approved)
 - Electrical ()
 - SWPPP/NOI ()
 - Building
 - Dust Control
 - Water Meter Tap ()
 - Concrete Tests
 - Compaction Tests
- Punch list complete date:
- Record drawings per General Conditions section 6.10
 - Reproducible as built Record Drawings for entire park project completed by a certified draftsman
 - same scale as plans.
 - Legible, reduced laminate layout drawings of irrigation system for each controller, color coded by each valve front of copy.
 - Irrigation legend and scheduled back of copy.
 - Irrigation schedule back of copies.
 - 11"x17" format.

E-mail copies to

Project Name	Quantity	Total Existing	#Removed	#Added	Current Total
Benches				1	
Bike Racks (capacity)					
Exercise Stations					
Mult Multi Dispensers					
Picnic Tables-ADA (8')				1	
Picnic Tables (6')				1	
Play Areas					
Play Areas-wood fiber (sf)					
Play Structures (2 to 5 yrs)		w/(1) shade canopy			
Play Structures (5 to 12 yrs)					
Swings Sets					
Shade Structure				1	
Trash Receptacles				1	

Tubular Fence - 4'					
Chain Link Fence - 4'					
Parking Spaces-ADA					
Parking Spaces-standard					

Light Pole-Single Hd Fixture					
Light Pole Double Hd Fixture					
Basketball Courts (Full)					
Basketball Courts (Half)				1	
Off Leash Dog Area wood fiber					
Recreation Fields					
Skate Facility, Modular					
Softball Fields (Lit)					
Softball Fields (Unlit)					
Tennis Courts (Lit)					
Tennis Courts (Unlit)					

3

E-mail copies to

2



CITY OF ALBUQUERQUE
DEPARTMENT OF MUNICIPAL DEVELOPMENT
CAPITAL IMPLEMENTATION PROGRAM

TITLE: MATTHEW MEADOWS PARK SHADE STRUCTURE ADDITION
PROJECT INFORMATION FORMS

Design Review Committee	City Engineer Approval	State	Mo. / Day / Yr.	Mo. / Day / Yr.
-------------------------	------------------------	-------	-----------------	-----------------

[illegible]


		Align		

[illegible][illegible]

City Project No.	7000000	Zone Map No.	Sheet	5	of	7
------------------	---------	--------------	-------	---	----	---

703093	G-13	5	5
--------	------	---	---

ENGINEERS SEAL



10.29.09

PROJECT #783093
OCTOBER 29, 2009

RECORD DRAWINGS

FINAL FOR CONSTRUCTION

**MATTHEW MEADOWS PARK
SHADE STRUCTURE ADDITION**