

GRISHAM PARK  
SHELTER CONSTRUCTION



City of Albuquerque  
Managing Department  
Department of Municipal Development  
Park Design and Construction Division

Owner  
Parks and Recreation Department



Dekker/Perich/Sabatini  
architecture ■ interiors ■ landscape ■ planning ■ engineering  
7601 Jefferson NE, Suite 100 Albuquerque, NM 87109 505 761-9700 fax 761-4222

Property Information

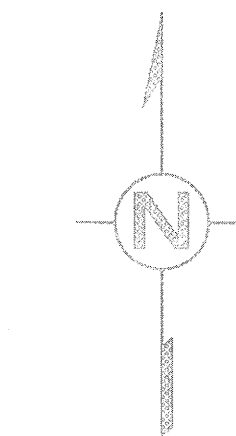
Legal Description:  
Property Address: 3119 Tiley Drive NE  
(Hoyle Road NE and Shepard Road NE)  
Zoning: R-1  
Total Site Area: 5.2 acres  
Total Area of Renovation: 2700 sf

Index of Drawings

- 1 Cover Sheet
- 2 General Notes
- 3 Demolition and Construction Plan
- 4 Project Information Forms

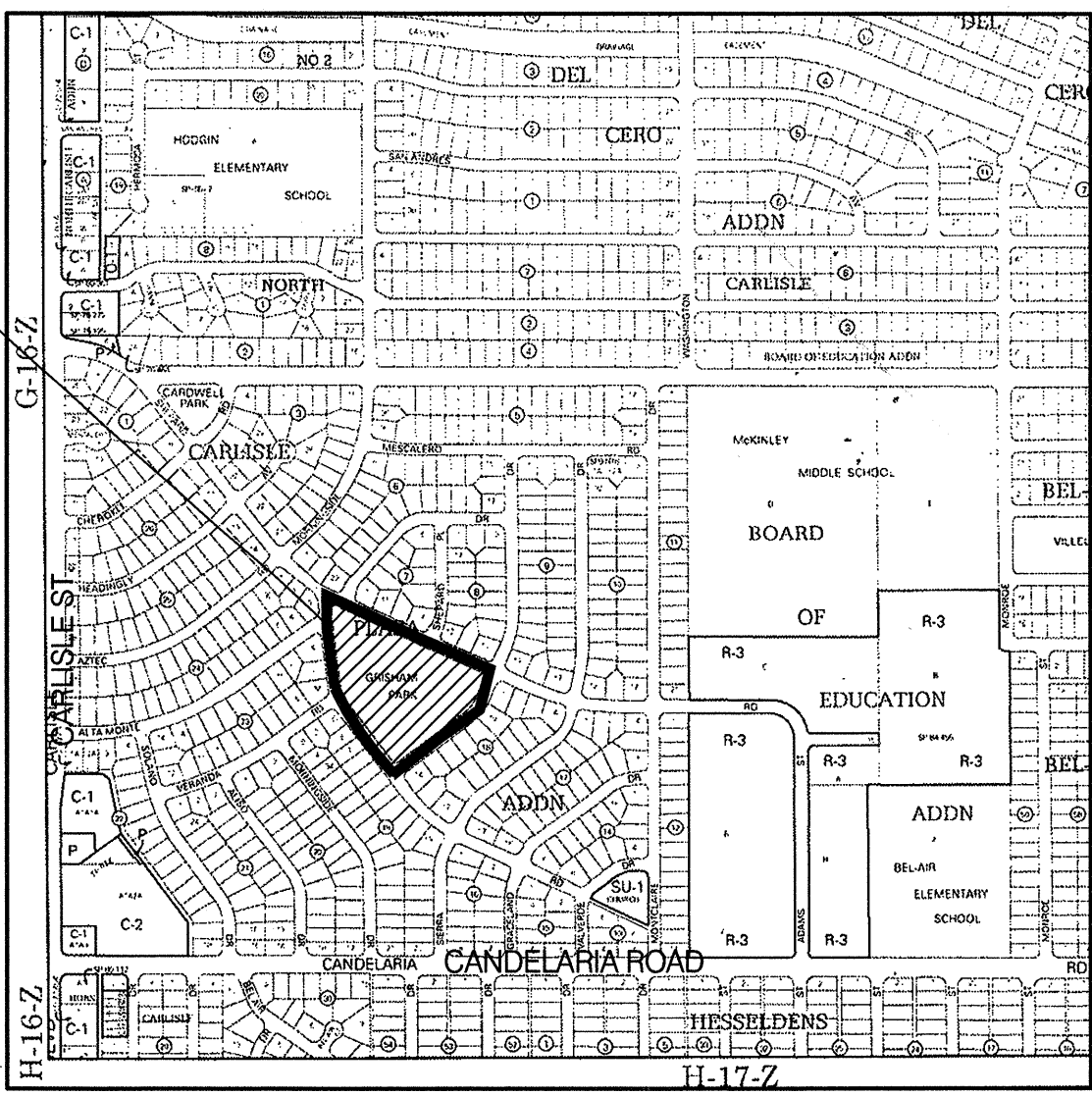
VICINITY MAP

SITE



PAGE NO. G-17

GRAPHIC SCALE



UTILITY COMPANY CONTACTS

CITY OF ALBUQUERQUE  
(WATER & SEWER)

NANCY MUSINSKI  
Engineer/Utility Development  
P.O. Box 1293  
Albuquerque, New Mexico 87103  
(505) 768-2729

PNM-ELECTRIC

JIM HILL  
Engineering Representative  
4201 Edith Boulevard NE  
Albuquerque, New Mexico 87107  
(505) 241-3581

PNM-GAS CO.

JOE DUNLAP  
Project Engineer  
4625 Edith Boulevard NE  
Albuquerque, New Mexico 87107  
(505) 241-7771

QUEST/US WEST

DAVID MULLER  
Capacity Provisioning Specialist  
400 Tijeras Ave. NW, Suite 710  
Albuquerque, New Mexico 87102  
(505) 245-8706

QUEST LONG DISTANCE

LARRY KELLY  
Senior Operations Tech  
400 Tijeras Ave. NW, Suite 710  
Albuquerque, New Mexico 87102  
(505) 246-0501

AT&T

DAVID CROWL  
Albuquerque, New Mexico 87103  
P.O. Box 1293  
Albuquerque, New Mexico 87103  
(505) 842-2911

MCI WORLDWIDE

ANDY DARNELL  
Operation Manager  
6001 Midway Park NE  
Albuquerque, New Mexico 87109  
(505) 346-4470

COMCAST CABLE

RITA ERICKSON  
Planning and Design Supervisor  
4611 Montbel Pl. NE  
Albuquerque, New Mexico 87107  
(505) 761-6235

UNIVERSE ACCESS

JAMIE MARTINEZ  
Resource Supervisor  
505 Marquette Ave. NW, #119A  
Albuquerque, New Mexico 87102  
(505) 328-2675

E-SPIRE (ACSI)

JOHN MARES  
505 Marquette Ave. NW, Suite 1605  
Albuquerque, New Mexico 87102  
(505) 998-2274

McLEOD USA

RICK MUELLER  
Supervisor of Outside Techs.  
505 Marquette Ave. NW, Suite 1600  
Albuquerque, New Mexico 87102  
(505) 244-3161

CityNet TELECOMMUNICATIONS

JOSH NELSON  
Field Representative  
13500 Coronado freeway  
Albuquerque, New Mexico 87121  
(505) 991-2120

TIME WARNER TELECOM

ROY HARRISON  
Plant Manager  
3830 Singer Blvd. NE, Suite 1000  
Albuquerque, New Mexico 87109  
(505) 938-7339

LEVEL 3

COMMUNICATIONS, LLC  
STEVE GILMAN  
Resource Supervisor  
1025 Eldorado Blvd.  
Broomfield, Colorado 80021  
(720) 888-5920

XSPEDIUS MANAGEMENT CO.

STEVE BENJAMIN  
Operations Support Manager  
505 Marquette Ave. NW, Suite 1605  
Albuquerque, New Mexico 87102  
(505) 345-6555

OSO GRANDE TECHNOLOGIES

BUD LENSING  
Resource Supervisor  
505 Marquette Ave. NW, #119A  
Albuquerque, New Mexico 87102  
(505) 328-2675



REV.	SHEETS	CITY ENGINEER	DATE	USER DEPARTMENT	DATE	USER DEPARTMENT	DATE
ENGINEERS STAMP & SIGNATURE		APPROVED		ENGINEER		DATE	
		DRC Chairman				APPROVED FOR CONSTRUCTION	
		Transportation					
		Water/Wastewater					
		Hydrology					
		C.I.P.					
		Constr. Mngmt.				CITY ENGINEER DATE	
		Constr. Coord.					
PROJECT NUMBER				783704		SHEET 1 OF 4	

FINAL FOR CONSTRUCTION

GRISHAM PARK  
SHELTER CONSTRUCTION


PROJECT #783704  
MARCH 12, 2010

RECORD DRAWINGS



- 1 FIVE (5) WORKING DAYS PRIOR TO BEGINNING CONSTRUCTION, THE CONTRACTOR WILL SUBMIT A DETAILED CONSTRUCTION SCHEDULE TO THE CITY CONSTRUCTION COORDINATION DIVISION. TWO (2) DAYS PRIOR TO CONSTRUCTION, THE CONTRACTOR WILL OBTAIN A BARRICADING PERMIT FROM THE CONSTRUCTION COORDINATION DIVISION. CONTRACTOR SHALL NOTIFY BARRICADE ENGINEER (924-3400) PRIOR TO OCCUPYING AN INTERSECTION. REFER TO SECTION 19 OF SPECIFICATIONS.
- 2 THE CONTRACTOR WILL NOTIFY THE FIELD ENGINEER NOT LESS THAN SEVEN (7) DAYS PRIOR TO STARTING WORK, IN ORDER THAT THE CITY SURVEY SECTION MAY TAKE NECESSARY MEASURES TO INSURE THE PRESERVATION OF SURVEY MONUMENTS. THE CONTRACTOR WILL NOTIFY THE ENGINEER IF A MONUMENT IS DISTURBED. REPLACEMENT WILL BE DONE ONLY BY THE CITY OF ALBUQUERQUE SURVEY SECTION AT THE CONTRACTOR'S EXPENSE. WHEN A CHANGE IS MADE IN THE FINISHED ELEV. OF THE PAVEMENT OF ANY ROADWAY IN WHICH A PERMANENT SURVEY MONUMENT IS LOCATED, CONTRACTOR WILL, AT HIS OWN EXPENSE, HAVE THE CITY SURVEY SECTION ADJUST THE MONUMENT COVER TO THE NEW GRADE UNLESS OTHERWISE SPECIFIED. REFER TO SECTION 4 OF SPECIFICATIONS.
- 3 THE SPECIFICATIONS USED FOR THIS PROJECT ARE THE CITY OF ALBUQUERQUE STANDARD SPECIFICATIONS FOR PUBLIC WORKS CONSTRUCTION, 1986 EDITION, UPDATE NO. 7.
- 4 ALL NEW MANHOLES SHALL BE TYPE "E" (COA DWG. 2102) UNLESS OTHERWISE NOTED ON THE PLANS.
- 5 THE CONTRACTOR WILL BE RESPONSIBLE FOR DISPOSING OF ALL DEBRIS, INCLUDING, BUT NOT LIMITED TO HAZARDOUS WASTE AT DISPOSAL SITES APPROVED BY GOVERNMENTAL AGENCIES REGULATING THE DISPOSAL OF SUCH MATERIALS.
- 6 ALL WATER VALVE BOXES AND MANHOLES IN THE STREET CONSTRUCTION ARE TO BE ADJUSTED TO FINISH GRADE AND WILL BE MEASURED AND PAID PER EACH.
- 7 SUBGRADE PREPARATION UNDER SIDEWALKS AND DRIVE PADS, AND SUBGRADE AND SUBBASE PREPARATION UNDER CURB AND GUTTER IS CONSIDERED INCIDENTAL TO THE CONSTRUCTION OF SUCH, AND NO DIRECT PAYMENT SHALL BE MADE FOR THOSE ITEMS OF WORK.
- 8 THE CONTRACTOR WILL REPLACE ANY STRIPPING THAT HAS BEEN RUINED OR REMOVED IN THE COURSE OF CONSTRUCTION.
- 9 ALL EXCAVATION WILL BE GOVERNED BY FEDERAL, STATE AND LOCAL LAWS, RULES, AND REGULATIONS CONCERNING CONSTRUCTION SAFETY AND HEALTH.
- 10 ALL SIGNS AND CODING WILL BE IN ACCORDANCE WITH THE "MANUAL OF UNIFORM TRAFFIC CONTROL DEVICES FOR STREETS AND HIGHWAYS" CURRENT EDITION PUBLISHED BY THE U.S. DEPARTMENT OF TRANSPORTATION.
- 11 THE CONTRACTOR IS TO EXERCISE CARE TO AVOID DISTURBING ANY EXISTING UNDERGROUND UTILITIES. IT WILL BE HIS RESPONSIBILITY TO COORDINATE WITH THE UTILITY COMPANIES IN ORDER TO PREVENT ANY SERVICE DISRUPTION. SEE SECTION 18 "UTILITIES", CITY OF ALBUQUERQUE, STANDARD SPECIFICATIONS FOR CONTRACTOR REQUIREMENTS.
- 12 WHEN ABUTTING NEW PAVEMENT TO EXISTING INTERSECTING STREETS, SAW CUT EXISTING PAVEMENT TO A STRAIGHT LINE AND AT RIGHT ANGLES AND REMOVE ANY BROKEN OR CRACKED PAVEMENT. NO DIRECT PAYMENT WILL BE MADE FOR SAW CUTTING.
- 13 ALL GAS VALVES, GAS MANHOLES, ELECTRICAL MANHOLES, TELEPHONE MANHOLES, AND UTILITY POLES WILL BE ADJUSTED TO GRADE BY EACH UTILITY COMPANY. CONTRACTOR WILL COORDINATE THROUGH CITY UTILITY COORDINATOR.
- 14 WHEN REMOVAL OF EXISTING CURB AND GUTTER OR SIDEWALK IS REQUIRED, REMOVE BACK TO NEAREST SUITABLE JOINT UNLESS OTHERWISE DIRECTED BY THE CITY FIELD ENGINEER.
- 15 THE CONTRACTOR WILL NOTIFY THE NEW MEXICO ONE CALL SYSTEM 260-1990 TWO (2) WORKING DAYS PRIOR TO COMMENCING WORK IN NEW AREAS.
- 16 CONTRACTOR WILL MAKE ALL WATER VALVES AND MANHOLES ACCESSIBLE TO THE CITY AT ALL TIMES.
- 17 CONTRACTOR WILL PLACE BITUMINOUS MATERIAL WITH THE USE OF A LAYDOWN MACHINE WHERE PAVEMENT IS 8 FEET IN WIDTH OR WIDER.
- 18 ALL SUBGRADE AND SUBBASE MATERIAL ENCOUNTERED IN PAVEMENT REMOVAL AND REPLACEMENT THAT IS DETERMINED BY THE FIELD ENGINEER TO MEET THE SPECIFICATIONS, CAN BE REUSED. HOWEVER, THE MATERIAL WILL BE PROCESSED AND COMPACTED TO MEET MOISTURE CONTENT AND PERCENT COMPACTION REQUIRED BY THE SPECIFICATIONS.
- 19 CONTRACTOR WILL NOT PAVE OVER ANY SURFACE FEATURE, I.E., GAS VALVE, MANHOLE COVER, ETC. WITHOUT PRIOR APPROVAL FROM THE CITY FIELD ENGINEER.
- 20 CONTRACTOR WILL CONFINE HIS WORK WITHIN THE CONSTRUCTION EASEMENT LIMITS AND/OR RIGHT-OF-WAY, OR PROVIDE COPIES OF AGREEMENTS WITH ADJACENT LANDOWNERS TO THE CITY OF ALBUQUERQUE.
- 21 ALL WATER VALVES AND FIRE HYDRANTS REMOVED TO BE SALVAGED AND RETURNED TO THE C.O.A.
- 22 MINIMUM BOTTOM WIDTH OF TRENCHES FOR RIGID PIPE SHALL BE EQUAL TO THE OUTSIDE DIAMETER PLUS 16 INCHES. BEDDING MATERIAL SHALL BE CLASS II, III, OR IV UNLESS OTHERWISE SPECIFICALLY NOTED ON THE PLANS.
- 23 MINIMUM BOTTOM WIDTH OF TRENCHES FOR NON-RIGID PIPE SHALL BE EQUAL TO THE OUTSIDE DIAMETER PLUS 12 INCHES. BEDDING MATERIAL SHALL BE CLASS I, II, OR III.
- 24 THE CONTRACTOR AGREES TO TAKE NECESSARY SAFETY PRECAUTIONS AS REQUIRED BY FEDERAL, STATE AND LOCAL AUTHORITIES TO PROTECT PEDESTRIAN AND VEHICULAR TRAFFIC IN THE CONSTRUCTION AREA, WHICH INCLUDE BUT ARE NOT LIMITED TO: MAINTAINING ADEQUATE WARNING SIGNS, BARRICADES, LIGHTS, GUARD FENCES, WALKS AND BRIDGES.
- 25 ALL STRUCTURAL CONCRETE WILL BE 3000 PSI UNLESS OTHERWISE NOTED ON PLANS.
- 26 ALL REINFORCING STEEL WILL BE GRADE 60.
- 27 ALL EXPOSED EDGES ON CAST-IN-PLACE CONCRETE STRUCTURES WILL HAVE A 1" CHAMFER UNLESS OTHERWISE NOTED.
- 28 ALL SPLICES IN REINFORCING STEEL TO BE 2-FOOT 6-INCH MINIMUM UNLESS OTHERWISE NOTED.

- 29 PRIOR TO CONSTRUCTION, THE CONTRACTOR WILL EXCAVATE AND VERIFY THE HORIZONTAL AND VERTICAL LOCATIONS OF ALL POTENTIAL CONFLICTING UTILITIES. SHOULD A CONFLICT EXIST BETWEEN THE FIELD INFORMATION AND THE PLANS, THE CONTRACTOR WILL NOTIFY THE FIELD ENGINEER SO THE CONFLICT CAN BE RESOLVED WITH MINIMUM AMOUNT OF DELAY.
- 30 THE REPLACEMENT OF THE EXISTING UTILITIES AND THE INSTALLATION OF NEW UTILITY LINES WILL BE COMPLETED IN ADVANCE OF STARTING THE PAVEMENT WORK. TEMPORARY PAVEMENT WILL BE PLACED IN ALL TRENCHES REQUIRED FOR THE UTILITY REPLACEMENTS IN THOSE AREAS THAT MUST MAINTAIN TRAFFIC UNTIL THE FINAL PAVEMENT WORK STARTS IN EACH AREA. TEMPORARY STRIPING SHALL BE THE CONTRACTOR'S RESPONSIBILITY. MAINTENANCE OF THE TEMPORARY PAVING AND STRIPING WILL BE AT THE CONTRACTOR'S EXPENSE.
- 31 TACK COAT FOR SURFACE COURSE REQUIREMENTS WILL BE DETERMINED BY THE FIELD ENGINEER.
- 32 THE CONTRACTOR WILL CONTACT THE CITY OF ALBUQUERQUE TRAFFIC DIVISION 857-8025, ONE (1) WEEK IN ADVANCE OF ANY CHANGES REQUIRED IN THE TRAFFIC SIGNALIZATION OF THIS PROJECT. ALL WORK ASSOCIATED WITH NEW TRAFFIC SIGNALIZATION SHALL BE THE RESPONSIBILITY OF THE CONTRACTOR.
- 33 ALL NEW STREET PAVING, DRIVEWAYS, SIDEWALKS, AND CURB AND GUTTERS, ABUTTING EXISTING AREAS SHALL MATCH THE ELEVATION OF THOSE AREAS.
- 34 PERMANENT PAVEMENT STRIPING AND MARKINGS WILL BE PLACED BY THE CONTRACTOR. ROAD SHALL NOT BE OPENED TO TRAFFIC UNTIL IT IS STRIPED. ALL STRIPING, PAVEMENT MARKINGS INCLUDING CROSSWALKS, ARROWS AND LINE MARKINGS ARE TO BE CONSTRUCTED OF HOT PLASTIC OR COLD PLASTIC IN ACCORDANCE WITH THE MANUAL OF UNIFORM TRAFFIC CONTROL DEVICES.
- 35 ALL EXCAVATED MATERIAL THAT IS NOT REQUIRED TO BE REUSED MUST BE REMOVED FROM THE PROJECT AREA WITHIN FOUR DAYS OF EXCAVATION. SPOIL PILES WILL BE ALLOWED ONLY AS DIRECTED BY THE CITY FIELD ENGINEER.
- 36 THE CONTRACTOR WILL COORDINATE THE CONSTRUCTION ACTIVITIES WITH ALL OTHER CONTRACTORS AND UTILITY COMPANIES WORKING IN THE SAME AREA. THE CONTRACTOR MAY BE REQUIRED TO RESCHEDULE THEIR ACTIVITIES TO ALLOW UTILITY CREWS TO PERFORM THEIR REQUIRED WORK. NO ADDITIONAL COMPENSATION WILL BE ALLOWED FOR DELAYS OR INCONVENIENCE CAUSED BY UTILITY COMPANY WORK CREWS. A CONTRACT EXTENSION MAY BE ALLOWED AS DELINEATED IN CITY OF ALBUQUERQUE STANDARD SPECIFICATIONS.
- 37 ALL CONSTRUCTION EASEMENTS ON PRIVATE PROPERTY WILL BE OBTAINED BY THE CITY OF ALBUQUERQUE PRIOR TO THE BEGINNING OF CONSTRUCTION.
- 38 EXISTING MEDIAN CURB AND GUTTER AND STANDARD CURB AND GUTTER, NOT DISTURBED BY CONTRACTOR, BUT OUT OF ALIGNMENT, DISPLACED VERTICALLY, BADLY BROKEN AND/OR DETERIORATED, WILL BE REPLACED AS DIRECTED BY THE FIELD ENGINEER AND PAID FOR AT CONTRACT UNIT PRICES.
- 39 ALL TRAFFIC CONTROL DEVICES REQUIRED FOR DRIVEWAY CLOSURES, UTILITY CONSTRUCTION OR FOR OTHER REASONS AND NOT SHOWN ON THE SIGNING PLANS WILL BE FURNISHED BY THE CONTRACTOR AND WILL BE PAID AS SPECIFIED IN THE TECHNICAL SPECIFICATIONS AND BID PROPOSAL. PRIOR TO PLACING THE TRAFFIC CONTROL DEVICES, THE CONTRACTOR WILL NOTIFY THE AFFECTED OWNERS IN ACCORDANCE WITH THE SPECIFICATIONS. CONTRACTOR MUST MAKE PROVISIONS TO PROVIDE ACCESS TO PROPERTIES. REFER TO SECTION 19 OF THE SPECIFICATIONS.
- 40 ALL UTILITY LINES WHICH ARE NOT SPECIFICALLY DESIGNATED TO BE REMOVED AND REPLACED ON THE PLANS, WILL BE MAINTAINED IN SERVICE. SHORING, SHEETING AND OTHER MEANS OF SUPPORT SHALL BE EMPLOYED BY THE CONTRACTOR TO PREVENT DAMAGE OR LOSS OF THESE EXISTING UTILITIES AND THESE SHORING, SHEETING, AND SUPPORTS ARE CONSIDERED INCIDENTAL TO THIS PROJECT. BEAM AND CABLE OR OTHER ADEQUATE SUPPORTS WILL BE USED FOR TEMPORARY SUPPORT OF ALL UTILITY LINES WHICH CROSS THE TRENCH. ANY DAMAGE TO EXISTING UTILITIES WILL PROMPTLY BE REPAIRED AT THE CONTRACTOR'S EXPENSE. THE CONTRACTOR WILL NOTIFY THE ENGINEER IMMEDIATELY OF ANY SIGNIFICANT DEVIATION OF EXPOSED UTILITIES FROM THE LOCATIONS SHOWN ON THE PLANS SO THAT CONFLICTS CAN BE RESOLVED IN A TIMELY MANNER.
- 41 THE CONTRACTOR WILL ASSUME RESPONSIBILITY FOR ANY DAMAGE TO EXISTING COA INFRASTRUCTURE (C & G, PAVING, ETC.) DURING CONSTRUCTION, APART FROM THOSE SECTIONS INDICATED FOR REMOVAL ON THE PLANS, AND WILL REPAIR OR REPLACE SAME AT HIS OWN EXPENSE. HE WILL SUITABLY PROTECT THE CURB AND GUTTER FROM INCIDENTAL SPLASHING DURING THE TACK COAT APPLICATION AND WILL BE RESPONSIBLE FOR CLEANING SAME AT HIS OWN COST SHOULD SPLASHING OCCUR.
- 42 ALL INTERFERING PORTIONS OF ABANDONED UTILITY LINES WHICH ARE EXPOSED AS A RESULT OF CONSTRUCTION WILL BE REMOVED AND DISPOSED OF BY THE CONTRACTOR.
- 43 STATIONS OF STORM DRAIN INLETS ARE TO THE CENTER OF GRATE. ALL STORM DRAIN INLETS WILL BE TYPE "A" UNLESS OTHERWISE NOTED ON THE PLANS.
- 44 SHORING COSTS WILL BE CONSIDERED INCIDENTAL TO THE TRENCH AND BACKFILL COSTS.
- 45 THE CONTRACTOR WILL BE RESPONSIBLE FOR SECURING NPDES PERMITS REQUIRED BY APPLICABLE CITY, STATE, AND FEDERAL REGULATIONS.
- 46 ALL STORM DRAIN AND CONNECTOR PIPE WILL BE CLASS IV REINFORCED CONCRETE PIPE UNLESS OTHERWISE NOTED ON THE PLANS.
- 47 THE TERM REMOVE USED IN THIS PLAN SET INCLUDES THE DISPOSAL OF SAID MATERIAL IN ACCORDANCE WITH CITY OF ALBUQUERQUE SPECIFICATIONS, LATEST EDITION.
- 48 CONTRACTOR WILL SURVEY AND LOG EXISTING ELEVATIONS OF CURB-AND-GUTTER, SIDEWALK, AND PAVEMENT WHICH WILL BE REMOVED FOR CONSTRUCTION OF IMPROVEMENTS. CONTRACTOR WILL REPLACE REMOVED CURB-AND-GUTTER, SIDEWALK, DRIVE PADS, AND PAVEMENT TO ELEVATIONS PRIOR TO REMOVAL UNLESS OTHERWISE INDICATED ON THE PLANS.
- 49 CONTRACTOR WILL CONSTRUCT TEMPORARY ASPHALT PAVEMENT AS DIRECTED BY THE FIELD ENGINEER TO PROVIDE ACCESS TO LOCAL BUSINESS, ETC. TEMPORARY PAVEMENT SHALL BE REMOVED AND DISPOSED OF PRIOR TO PLACEMENT OF FULL WIDTH PAVEMENT SECTION. TEMPORARY PAVING SHALL BE PER COA STD. DWG. 2415 AND PAID FOR PER COA STD. SPECIFICATIONS.
- 50 ALL CLASSES OF SEEDING SHALL BE DRY LAND MIX PLACED AT 1.5 LBS/1000 S.F. WITH FERTILIZER 21-12-12 PLACED AT 5 LBS/1000 S.F.
- 51 ALL ASPHALTIC CONCRETE SHALL BE MINIMUM 1800 LB. STABILITY AND COMPACTED TO 95% MODIFIED MARSHALL DENSITY UNLESS OTHERWISE NOTED ON THE PLANS.
- 52 ANY WORK OCCURRING WITHIN AN ARTERIAL ROADWAY REQUIRES TWENTY-FOUR (24) HOUR CONSTRUCTION.
- 53 ALL EXCAVATION, TRENCHING AND SHORING ACTIVITIES MUST BE CARRIED-OUT IN ACCORDANCE WITH OSHA 29 CFR 1926.650 SUBPART P.
- 54 THE CONTRACTOR SHALL BE RESPONSIBLE FOR TIMING AND COORDINATION OF WATER SHUTOFF AT LEAST SEVEN (7) WORKING DAYS PRIOR TO CONSTRUCTION. CONTRACTOR SHALL CONTACT THE WATER SYSTEMS DIVISION, 857-8200, TO INITIATE IMPLEMENTATION OF THE NON-PRESSURIZED CONNECTION PLAN.
- 55 FOR STORM DRAIN CONSTRUCTION, RCP PIPE JOINTS SHALL NOT BE GROUTED PRIOR TO FINAL INSPECTION. FINAL INSPECTION WILL DETERMINE JOINTS TO BE GROUTED FOR FINAL ACCEPTANCE OF THE CONSTRUCTION.
- 56 CONTRACTOR SHALL MAINTAIN A GRAFFITI-FREE WORK SITE. CONTRACTOR SHALL PROMPTLY REMOVE ANY AND ALL GRAFFITI FROM EQUIPMENT, WHETHER PERMANENT OR TEMPORARY.
- 57 CONTRACTOR SHALL ERECT TEMPORARY CHAIN LINK CONSTRUCTION FENCE. SUCH FENCE SHALL BE MAINTAINED THROUGHOUT THE DURATION OF THE CONSTRUCTION PERIOD AND REMOVED ONLY UPON FINAL ACCEPTANCE OF THE PROJECT BY THE CITY.
- 58 QUANTITIES PROVIDED ON THE PLANS ARE FOR THE CONTRACTOR'S CONVENIENCE ONLY. PLANS SHALL TAKE PRECEDENCE IN ALL CASES.

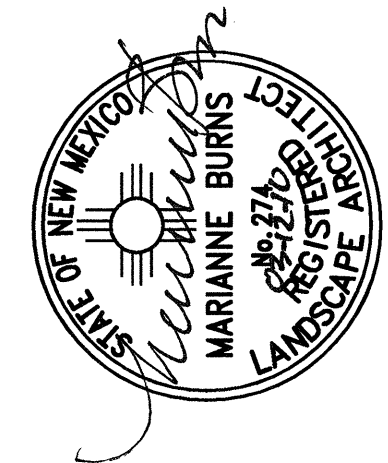


Dekker/Perich/Sabatini

architecture • interiors • landscape • planning • engineering  
7201 Jefferson NE, Suite 100  
Albuquerque, NM 87109

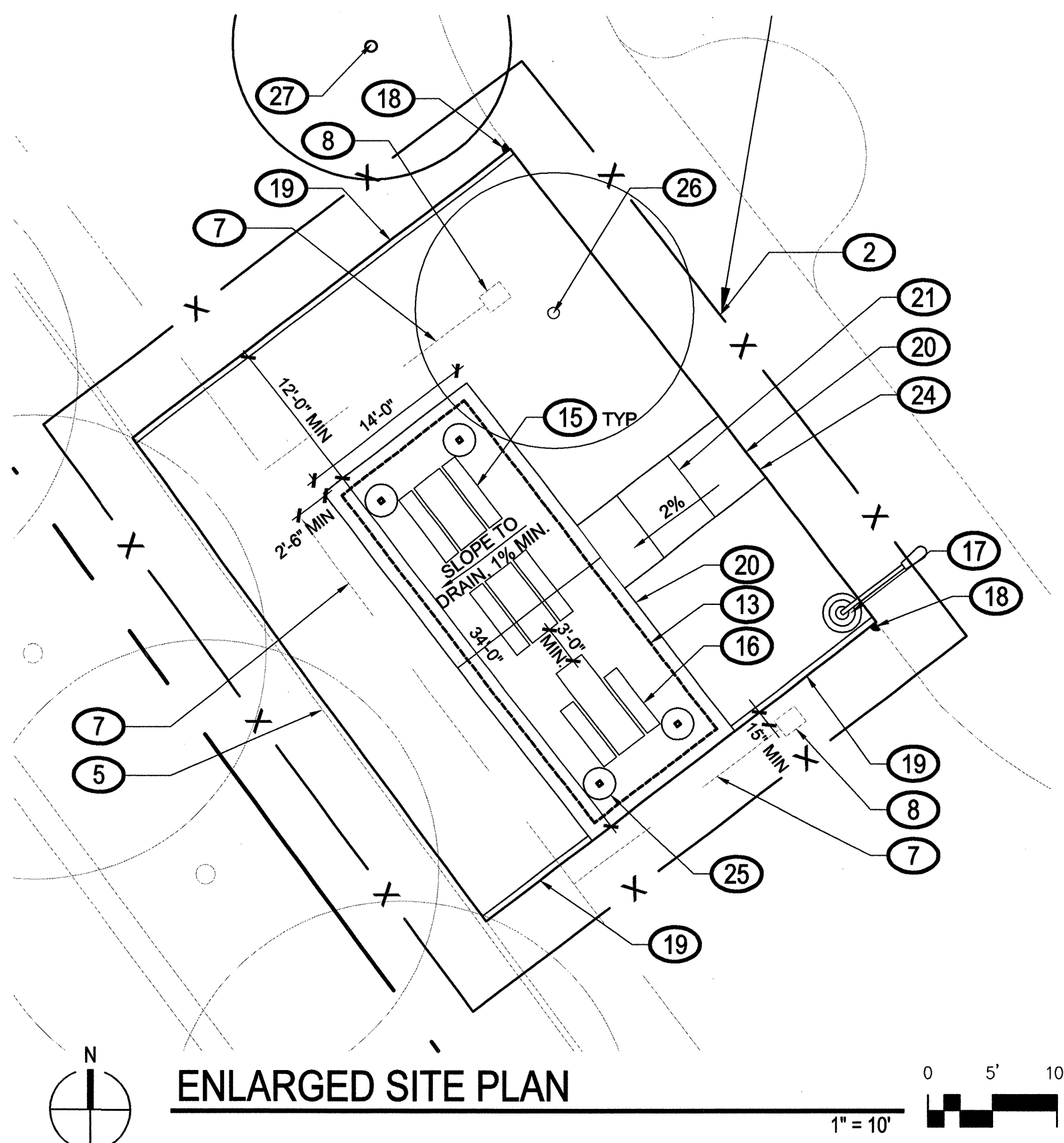
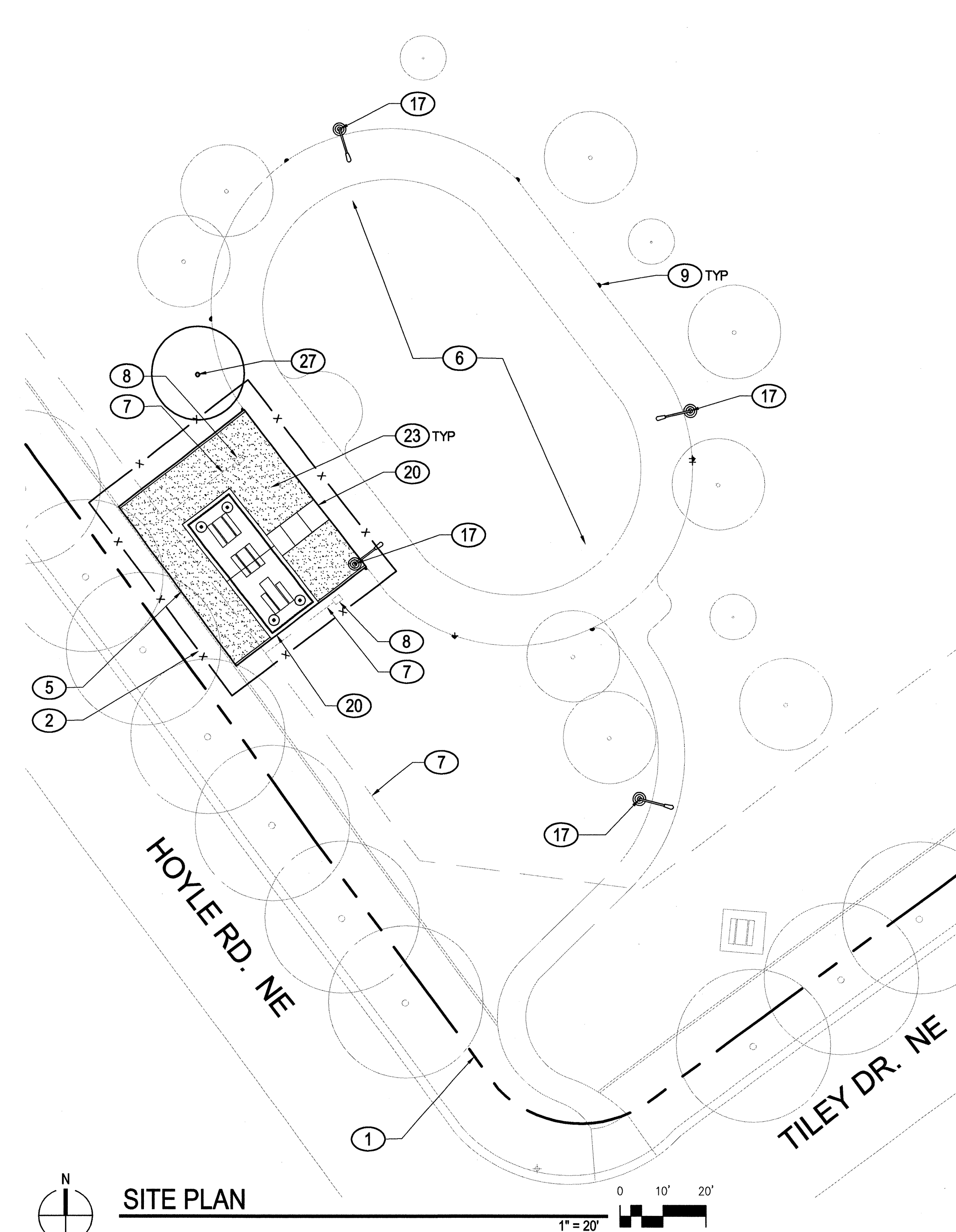
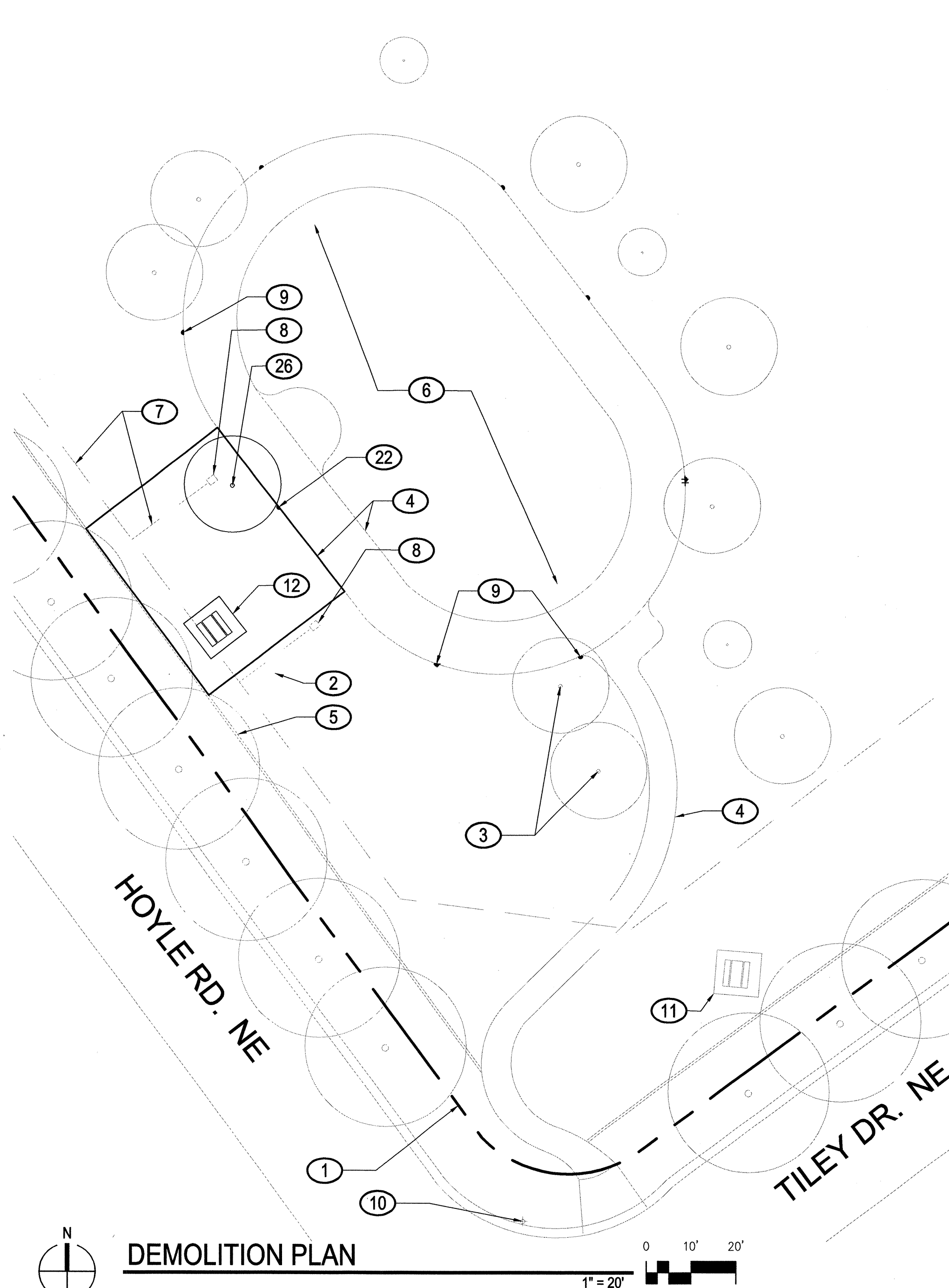
505 761-9100  
505 761-9100  
fax 505-922-1022

CITY OF ALBUQUERQUE DEPARTMENT OF MUNICIPAL DEVELOPMENT PARK DESIGN AND CONSTRUCTION DIVISION			
TITLE: GRISHAM PARK SHELTER CONSTRUCTION			
GENERAL NOTES			
Design Review Committee	City Engineer Approval	Last Design Update	No. / Day / Yr.
			02/25/10
			03/12/10
City Project No.	783704	Zone Map No. G-17	Sheet 2 of 4



REMARKS	BY
NO.	DATE
DESIGNED BY	RE/KR
DRAWN BY	RE
CHECKED BY	KR
DATE	03/10
DATE	03/10
DATE	03/10





- NOTES:
1. GROUNDING PER MANUFACTURER'S RECOMMENDATION.
  2. PROVIDE ENGINEERED, STAMPED SHOP DRAWINGS FOR APPROVAL.
  3. PROVIDE CONTROLS IN LOCKED BOX, 8' OFF GROUND.

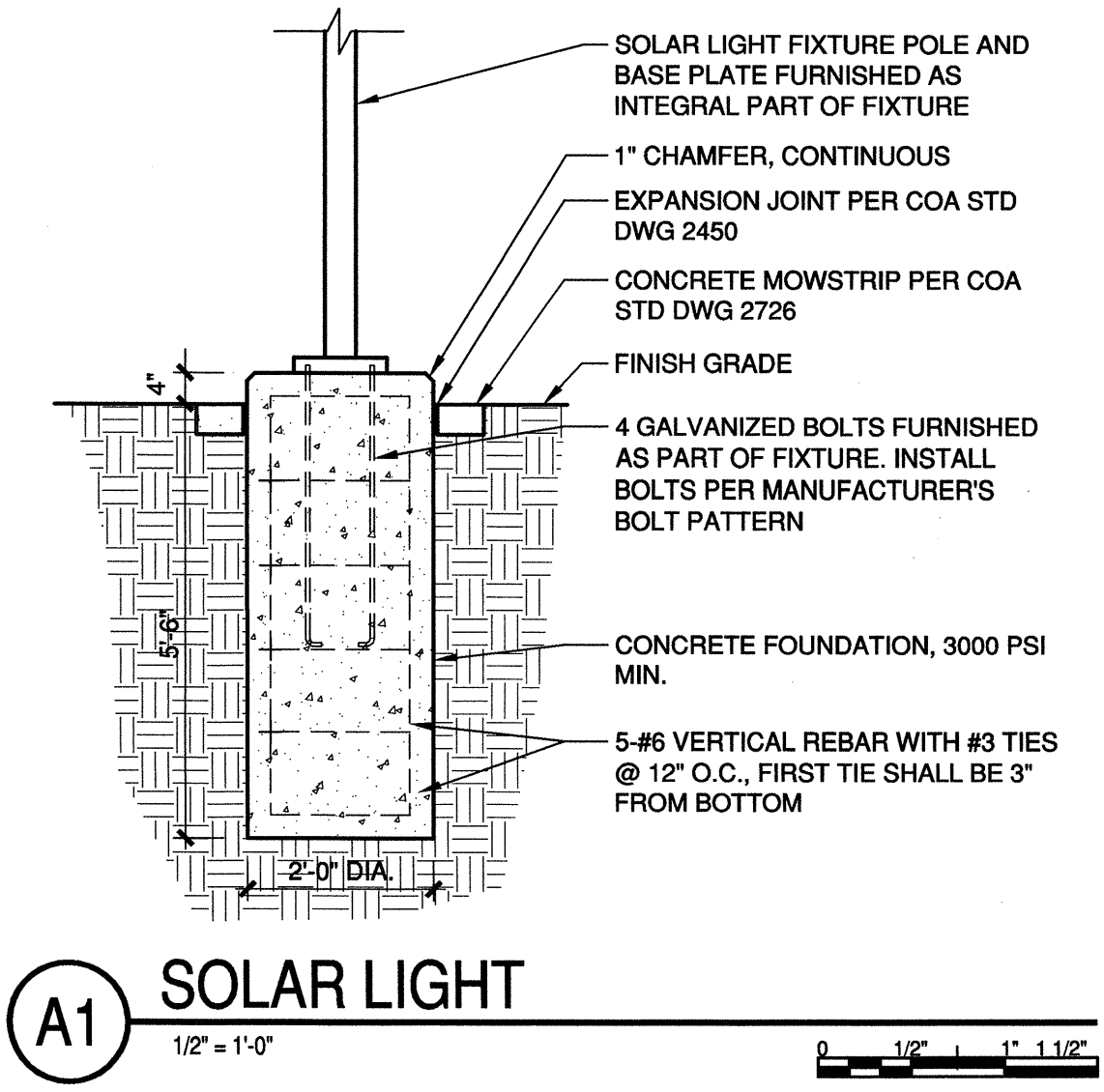
- KEY NOTES
- THESE KEY NOTES APPLY TO THE ENTIRE SHEET.

SITE FURNISHINGS

- SHELTER (QTY: 1)
- POLYGON MODEL #RAM12x32MR-B5,
  - POLI-5000 FINISH
  - ROOF COLOR: ARCHITECTURAL RED
  - FRAME COLOR: TUDOR BROWN
  - REP: CHURCHILL RECREATION (505-401-3498)
- PICNIC TABLE (QTY: 2)
- DUMOR MODEL #100-60PL
  - COLOR: CEDAR AND BLACK
  - REP: EXERPLAY (800-457-5444)
- ACCESSIBLE PICNIC TABLE (QTY: 1)
- DUMOR MODEL #100-68-1PL
  - COLOR: CEDAR AND BLACK
  - REP: EXERPLAY (800-457-5444)
- SOLAR LIGHT FIXTURE (QTY: 4)
- SOL #TPM-250-3B100-Q3-CH-DSC-6" ARM-DTD-LBX ON ALP POLE #RTS-20-80-11-AB-PLATINUM SILVER-TXCR-DM19-BC
  - REP: RESOURCE LIGHTING (505-344-2944)

GENERAL SHEET NOTES:

- CONTRACTOR SHALL NOT RELY UPON THESE DRAWINGS TO BE AN ACCURATE SURVEY OF EXISTING CONDITIONS. THIS PLAN IS BASED UPON ARCHIVED DRAWINGS; A NEW TOPOGRAPHICAL SURVEY WAS NOT COMPLETED FOR THIS WORK.
- PROPERTY LINE SHOWN IS APPROXIMATE.
- CONTRACTOR SHALL FIELD VERIFY ALL EXISTING FEATURES AND NOT RELY ON DRAWINGS TO BE ACCURATE. EXISTING FEATURES INCLUDING IRRIGATION VALVE BOXES, TREE LOCATIONS, AND IRRIGATION HEADS, ARE SHOWN ON THIS PLAN FOR REFERENCE ONLY.
- EXISTING IRRIGATION PIPES SHOWN ARE APPROXIMATE ONLY AND TAKEN FROM EXISTING CITY DOCUMENTATION.
- CONTRACTOR SHALL INDEPENDENTLY DETERMINE LOCATION OF THE IRRIGATION MAINLINE AND LATERALS PRIOR TO CONSTRUCTION.
- CONTRACTOR SHALL FIELD VERIFY EXISTING IRRIGATION VALVE SIZE, NUMBER OF HEADS, AND SPRAY HEAD NOZZLING AND CONFIRM IN WRITING THAT THE IRRIGATION SYSTEM CAN SUPPORT TWO ADDITIONAL QUARTER IRRIGATION HEADS, AND THE ELIMINATION OF ONE HALF SPRAY HEAD.
- CAP ALL IRRIGATION PIPING 18" BELOW GRADE.
- CONTRACTOR SHALL REVIEW DRAWINGS AND NOTIFY LANDSCAPE ARCHITECT OF ANY DISCREPANCY IN DRAWINGS OR FIELD CONDITIONS PRIOR TO PROCEEDING WITH WORK.
- CONTRACTOR SHALL STAKE EXISTING ELEMENTS AND LAYOUT THE PROPOSED IMPROVEMENTS TO AVOID DAMAGING EXISTING FEATURES, AND NOT LOCATE ANY IMPROVEMENTS (SIDEWALKS, SLABS, FOOTINGS ETC.) ON TOP OF PARK INFRASTRUCTURE.
- SITE ELEMENTS TO REMAIN ARE TO BE UNDISTURBED AND PROTECTED FROM CONSTRUCTION ACTIVITIES.
- ALL ITEMS NOTED TO BE REMOVED SHALL BE DISPOSED OF LEGALLY AND IN ACCORDANCE WITH ALL REGULATIONS.
- DIMENSIONS ARE TO CONVEY TO THE CONTRACTOR THE MINIMUM DISTANCE FROM EXISTING FEATURES TO PRESERVE AND PROTECT THE EXISTING FEATURE TO REMAIN.
- DAMAGE DUE TO CONSTRUCTION ACTIVITIES SHALL BE REPLACED OR RETURNED TO ORIGINAL CONDITION AT NO COST TO THE OWNER.
- CONTRACTOR SHALL SUBMIT ENGINEERED, STAMPED SHOP DRAWINGS OF SHELTER FOR REVIEW AND APPROVAL.
- SHELTER POST FOUNDATIONS SHALL EXTEND 4" MINIMUM, ABOVE ADJACENT CONCRETE WALK. TOP OF FOUNDATIONS SHALL ALL BE AT THE SAME ELEVATION AND LEVEL FOR SHELTER INSTALLATION.
- CONTRACTOR SHALL REPAIR ALL DAMAGED TURF GRASS WITH SOD TO MATCH EXISTING.
- CONTRACTOR SHALL SUBMIT ENGINEERED, STAMPED SHOP DRAWINGS OF SOLAR LIGHTS, INCLUDING FOUNDATIONS, FOR REVIEW AND APPROVAL.
- IRRIGATION SPRAY HEAD EQUIPMENT WAS CHOSEN USING THE FOLLOWING ASSUMPTIONS DERIVED FROM THE IRRIGATION PLAN PROVIDED BY COA DATED 1/7/94. CONTRACTOR SHALL CONFIRM ASSUMPTIONS AND INFORM LANDSCAPE ARCHITECT IF THE INFORMATION IS INCORRECT.
  - PSI IS BETWEEN 50 AND 55
  - ORIGINAL TORO HEADS WERE (OR ARE) BEING REPLACED BY HUNTER SPRAY HEADS WITH EQUAL GPM AND PRECIPITATION RATES.
  - THE TORO SPRAY HEAD SPECIFIED IN THE ORIGINAL DESIGN HAS A GPM OF 10.2 GPM
- THE SPECIFIED HUNTER IRRIGATION HEAD IS ADJUSTABLE TO A QUARTER RADIUS, THEREFORE REQUIRING THE NEW QUARTER SPRAY HEAD TO DISTRIBUTE ONE QUARTER OF THE ORIGINAL GPM. THE HUNTER PDP LOW ANGLE NOZZLE DISTRIBUTES 2.8 GPM- APPROXIMATELY ONE-QUARTER OF 10.2 GPM.

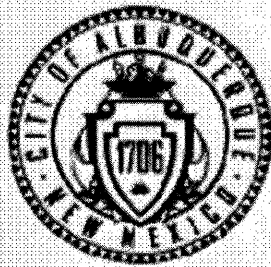


AS BUILT INFORMATION		BENCH MARKS		SURVEY INFORMATION		ENGINEER'S SEAL	
CONTRACTOR	DATE	NO.	BY	DATE	NO.	BY	DATE
INSPECTOR'S	DATE						
FIELD	DATE						
VERIFICATION BY	DATE						
CORRECTED BY	DATE						
MICRO-FILM INFORMATION							
RECORDED BY	DATE						
NO.							

NO.	DATE	REMARKS	BY
		DESIGN	
		REVISIONS	
DESIGNED BY	DATE	REKR	03/10
DRAWN BY	DATE	RE	03/10
CHECKED BY	DATE	KR	03/10

CITY OF ALBUQUERQUE DEPARTMENT OF MUNICIPAL DEVELOPMENT PARK DESIGN AND CONSTRUCTION DIVISION	
TITLE: GRISHAM PARK SHELTER CONSTRUCTION DEMOLITION AND CONSTRUCTION PLAN	
Design Review Committee	City Engineer Approval
Last Design Update	
No. / Day / Yr.	
02/25/10	
03/12/10	
City Project No.	783704
Zone Map No.	G-17
Sheet	3 of 4





City of Albuquerque  
Richard J. Berry, Mayor

Department of Municipal Development  
Michael J. Riordan, P.E., Acting Director

### Project Information Form

Date: 3-12-10  
Subject: Grisham Park Shelter Construction

As of (date): 3/12/10  
Project ID#: 783704  
Name of Facility: Grisham Park  
Address: 3119 Tilev Drive NE  
CD: 100%  
Park Zoning: R-1  
☐ Developed  
☒ Renovation

#### Detailed Park Summary Information:

Total Park Acres: 5.2 acres		
Acres Renovated: 0.06 ac (2700 sq)		
<b>Description of Project:</b>		
Acres of Irrigated Turf (acre)	4.4	cool / warm season
Turf Removal:	1748	square feet
Landscape Area Trees & Shrubs:	6	square feet
Tree Count:	47	Deciduous Evergreen
Recycled Construction Materials:		truckload
Recycled Benches		
Recycled Tables	3	
Engineered Wood Fibers		cubic yards

Park property renovated/developed; per FINAL FOR CONSTRUCTION DOCUMENTS DATED 00/00/00 and COA specifications.

Effective date:   
NO MORE CHARGES for new water, electric and gas

...will be accepted by the contractor:  
...are to occur against activity numbers:

#### Water Meter:

Reading:   
Address:   
Serial Number:   
Type:   
Final billing date:   
New Service IV:

#### Electric Meter:

Reading:   
Number:   
Serial Number:   
Type:

- ☐ Maintenance Documents
  - ☐ Keys (4-trash receptacles)
  - ☐ Benches
  - ☐ Tables
  - ☐ Play Structures
  - ☐ Shade Structures (engineered drawings and footing details)
  - ☐ Lights
  - ☐ Booster Pump
  - ☐ Irrigation Controller
- ☐ Permits (date approved)
  - ☐ Electrical ( )
  - ☐ SWPPP/NOI ( )
  - ☐ Building ( )
  - ☐ Dust Control ( )
  - ☐ Water Meter Tap ( )
  - ☐ Concrete Tests
  - ☐ Compaction Tests
- ☐ Punch list complete date: 00/00/00
- ☐ Record drawings per General Conditions section 6.10
  - ☐ Reproducible as built Record Drawings for entire park project completed by a certified draftsman.
    - same scale as plans.
  - ☐ Legible, reduced laminate layout drawings of irrigation system for each controller.
    - color coded by each valve front of copy.
    - irrigation legend and scheduled back of copy.
    - irrigation schedule back of copies.
    - 11"x17" format.

Email copies to:  
groschla@caba.gov, amercia@caba.gov, rferaz@caba.gov, jcasados@caba.gov, rloftrom@caba.gov,  
jeffhart@caba.gov, Rgaldon@caba.gov, jdmn@caba.gov, DFlores@caba.gov, cmsandoval@caba.gov, Nkuhn@caba.gov

#### Contacts:

##### Project Manager, City of Albuquerque, Park Design & Construction, DMD

Project Manager: Christina Sandoval  
Phone: 768-3808  
Email: cmsandoval@caba.gov  
Fax:

#### Consultant: AEX

Design Consultant: Dekker Perich Sabatini  
Address: 7601 Jefferson NE, Albq, NM 87109  
Contact Name: Renee Euler  
Phone: 761-9700  
Application: Design Liability

Landscape Architect of Record:  
Name:   
Address:   
Phone:   
Email:

#### Contractor Information:

Contractor:   
Contact Name:   
Phone:   
Scope of Work:   
Warranty Start Date: 00/00/00 - Expiration Date: 00/00/00

#### Warranty and Vendor Information:

The following is a listing of all labor, vendors and product warranties for project:   
During the first year all calls regarding warranty information will go to the contractor. After one year

#### Vendor:

Phone:   
Application:   
Product:   
Model#:   
Manufacture structural warranty:

#### Vendor:

Phone:   
Application:   
Product:   
Model#:   
Manufacture structural warranty:

#### Vendor:

Phone:   
Application:   
Product:   
Model#:   
Manufacture structural warranty:

Project Name: Grisham Park Shelter Construction

Amenities	Total Existing	# Removed	# Added	Current Total
Benches	12	0	0	12
Bike Racks (capacity)	7	0	0	7
Exercise Stations	10	0	0	10
Mutt Mitt Dispensers	3	0	0	3
Picnic Tables-ADA (6')	0	0	1	1
Picnic Tables(6')	8	1	2	9
Play Areas	1	0	0	1
Play Areas-wood fiber (cy)				
Play Structures (2 to 5 yrs)				
Play Structures (5 to 12 yrs)				
Swings Set - (I) Two Bay				
Shade Structure	0		1	1
Trash Receptacles	17	0	0	17
Barrel Vaulted Gable Shelter				
Tubular Fence - 4'				
Chain Link Fence - 4'				
Parking Spaces-ADA				
Parking Spaces-standard				
*****				
Light Pole-Single H6 Fixture-Photo cell with timer	0		4 (solar)	4
Light Pole - Double H6 Fixture-Photo cell with timer				
Basketball Courts (Full)				
Basketball Courts (Half)				
Off Leash Dog Area wood fiber				
Recreation Fields	3	0	0	3
Skate Facility, Modular				
Softball Fields (Lit)				
Softball Fields (Unlit)				
Tennis Courts (Lit)				
Tennis Courts (Unlit)				

#### Audit Information for Play Equipment, Irrigation System and Backflow Preventor

Auditor:   
Phone:   
Inspector Name:   
Inspection Date:   
Products Inspected: Play Equipment & Wood Chips

Auditor:   
Phone:   
Inspector Name:   
Inspection Date:   
Products Inspected: Landscape Irrigation Water Audit

#### Water Meter:

Reading:   
Address:   
Serial Number:   
Type:   
Final billing date:   
New Service IV:

#### Electric Meter:

Reading:   
Number:   
Serial Number:   
Type:

- ☐ Maintenance Documents
  - ☐ Keys (4-trash receptacles)
  - ☐ Benches
  - ☐ Tables
  - ☐ Play Structures
  - ☐ Shade Structures (engineered drawings and footing details)
  - ☐ Lights
  - ☐ Booster Pump
  - ☐ Irrigation Controller
- ☐ Permits (date approved)
  - ☐ Electrical ( )
  - ☐ SWPPP/NOI ( )
  - ☐ Building ( )
  - ☐ Dust Control ( )
  - ☐ Water Meter Tap ( )
  - ☐ Concrete Tests
  - ☐ Compaction Tests
- ☐ Punch list complete date: 00/00/00
- ☐ Record drawings per General Conditions section 6.10
  - ☐ Reproducible as built Record Drawings for entire park project completed by a certified draftsman.
    - same scale as plans.
  - ☐ Legible, reduced laminate layout drawings of irrigation system for each controller.
    - color coded by each valve front of copy.
    - irrigation legend and scheduled back of copy.
    - irrigation schedule back of copies.
    - 11"x17" format.

Email copies to:  
groschla@caba.gov, amercia@caba.gov, rferaz@caba.gov, jcasados@caba.gov, rloftrom@caba.gov,  
jeffhart@caba.gov, Rgaldon@caba.gov, jdmn@caba.gov, DFlores@caba.gov, cmsandoval@caba.gov, Nkuhn@caba.gov

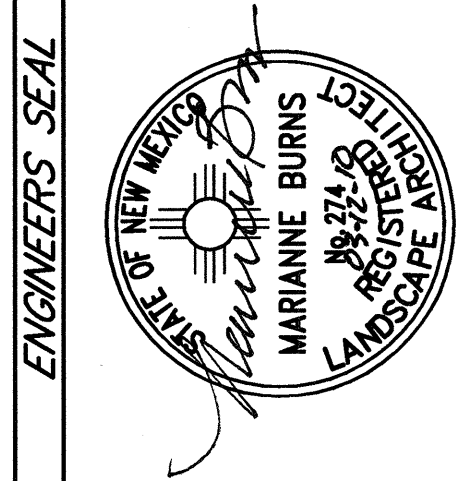


architecture • interiors • landscape • planning • engineering  
7601 Jefferson NE, Suite 100  
Albuquerque, NM 87109  
505 761-9700  
fax 761-4222

CITY OF ALBUQUERQUE  
DEPARTMENT OF MUNICIPAL DEVELOPMENT  
PARK DESIGN AND CONSTRUCTION DIVISION

TITLE: GRISHAM PARK SHELTER CONSTRUCTION  
PROJECT INFORMATION FORMS

Design Review Committee	City Engineer Approval	Mo. / Day / Yr. 03/12/10	Mo. / Day / Yr.
City Project No.	783704	Zone Map No. G-17	Sheet 4 of 4



RECORD DRAWINGS

PROJECT #783704  
MARCH 12, 2010

GRISHAM PARK  
SHELTER CONSTRUCTION

FINAL FOR CONSTRUCTION

