



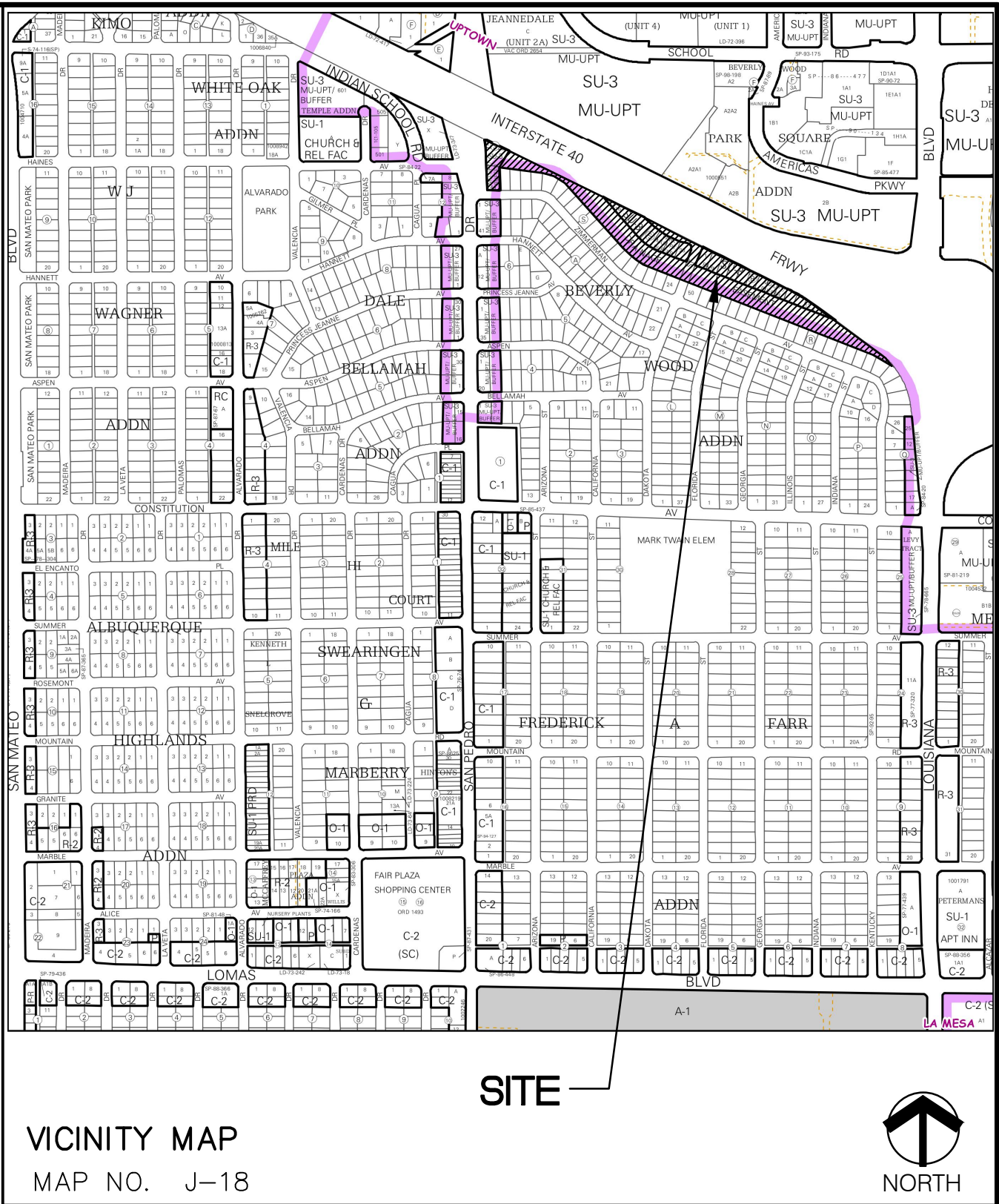
TOM BOLACK URBAN FOREST PARK

CITY OF ALBUQUERQUE

PARKS AND RECREATION DEPARTMENT

STRATEGIC PLANNING AND DESIGN DIVISION

ALBUQUERQUE, NEW MEXICO



CONSENSUS PLANNING, INC.
PLANNING / LANDSCAPE ARCHITECTURE
302 EIGHTH STREET NW, ALBUQUERQUE, NM 87102 (505) 764-9801

PROPERTY INFORMATION

LEGAL DESCRIPTION: BLOCKS S&R OF THE WOOD-BEVERLY ADDITION
METER ADDRESS: 2000 DAKOTA ST NE
ZONING: SU-3 PARK (MU-UPT/BUFFER)
TOTAL SITE AREA: 7.8 ACRES
IMPROVEMENTS:
TOTAL MAIN ENTRY LANDSCAPE AREA: 12,340 SF (0.3 ACRES)
TOTAL NATIVE/NATURALIZED AREA: 209,715 SF (4.8 ACRES)
TOTAL TURF AREA: N/A
PARKING PROVIDED: N/A

INDEX OF DRAWINGS

- 1 COVER SHEET
- 2 GENERAL NOTES
- 3 SITE PLAN
- 4 IRRIGATION PLAN (OVERALL)
- 5 IRRIGATION PLAN
- 6 IRRIGATION PLAN
- 7 IRRIGATION PLAN
- 8 IRRIGATION PLAN
- 9 PLANTING PLAN
- 10 PLANTING PLAN
- 11 PLANTING PLAN
- 12 PLANTING PLAN & DETAILS

REDRAWN FOR
RECORD PURPOSES

RECORD DRAWINGS
THIS RECORD DRAWING HAS BEEN PREPARED, BASED UPON INFORMATION FURNISHED BY THE CONTRACTOR. THE DESIGN PROFESSIONAL HAS NOT INDEPENDENTLY REVIEWED THE ACCURACY OF THE INFORMATION PROVIDED. THESE RECORD DRAWINGS ACCURATELY DEPICT THE FIELD CHANGES WHICH WERE REPORTED BY THE CONTRACTOR.

UTILITY COMPANY CONTACTS

ALBUQUERQUE BERNALILLO COUNTY WATER UTILITY AUTHORITY (WATER & SEWER)
ANTHONY MONTAÑA JR., PE
Sr. Engineer/Utility Development
P.O. Box 1293
Albuquerque, New Mexico 87103
(505) 768-2713

PNM-ELECTRIC
CHRIS BUDD
Engineering Representative
4201 Edith Blvd. NE MS-ES61
Albuquerque, New Mexico 87107
(505) 401-7482

NEW MEXICO GAS CO.
BRENDA TARADDEI
Project Engineer
4625 Edith Blvd. NE
Albuquerque, New Mexico 87107
(505) 249-6507

CENTURY LINK
NATALIA ANTONIO
NM Engineering/Planning
400 Tijeras Ave. NW, Suite 570
Albuquerque, New Mexico 87102
(505) 245-6846

WEST LONG DISTANCE
LARRY KELLY
Senior Operations Tech
400 Tijeras Ave. NW, Suite 570
Albuquerque, New Mexico 87102
(505) 246-0501

AT&T
DAVID STOCKTON
Resource Supervisor
111 Third St. NW
Albuquerque, New Mexico 87103
(303) 620-2254

COMCAST CABLE
MIKE MORTUS
Planning and Design Supervisor
4611 Montbel Pl. NE
Albuquerque, New Mexico 87107
(505) 271-3644

BCG ASSETS
JOHN BROWN
505 Marquette Ave. NW, Suite LL-110 A
Albuquerque, New Mexico 87102
(505) 450-2338

TIME WARNER TELECOM
ROY HARRISON
Plant Manager
5411 Jefferson St. NE, Suite 200
Albuquerque, New Mexico 87109
(505) 938-7339

McLEOD USA
RICK MUELLER
Supervisor of Outside Techs.
505 Marquette Ave. NW, Suite 1600
Albuquerque, New Mexico 87102
(505) 217-0038

LEVEL 3 COMMUNICATIONS, LLC
STEVE GILMAN
Resource Supervisor
1025 Eldorado Blvd.
Broomfield, Colorado 80021
(720) 888-5920

MCI WORLDCOM
ANDY DARNELL
Operation Manager
6001 Midway Park NE
Albuquerque, New Mexico 87109
(505) 346-4470



REV.	SHEETS	CITY ENGINEER	DATE	USER DEPARTMENT	DATE	USER DEPARTMENT	DATE
ENGINEERS STAMP & SIGNATURE		APPROVED	ENGINEER		DATE		
		DRC Chairman					
		Transportation					
		Water/Wastewater					
		Hydrology					
		C I P					
		Constr. Mngmt.					
		Constr. Coord.					
				PROJECT NUMBER			
		783711					

FINAL FOR CONSTRUCTION

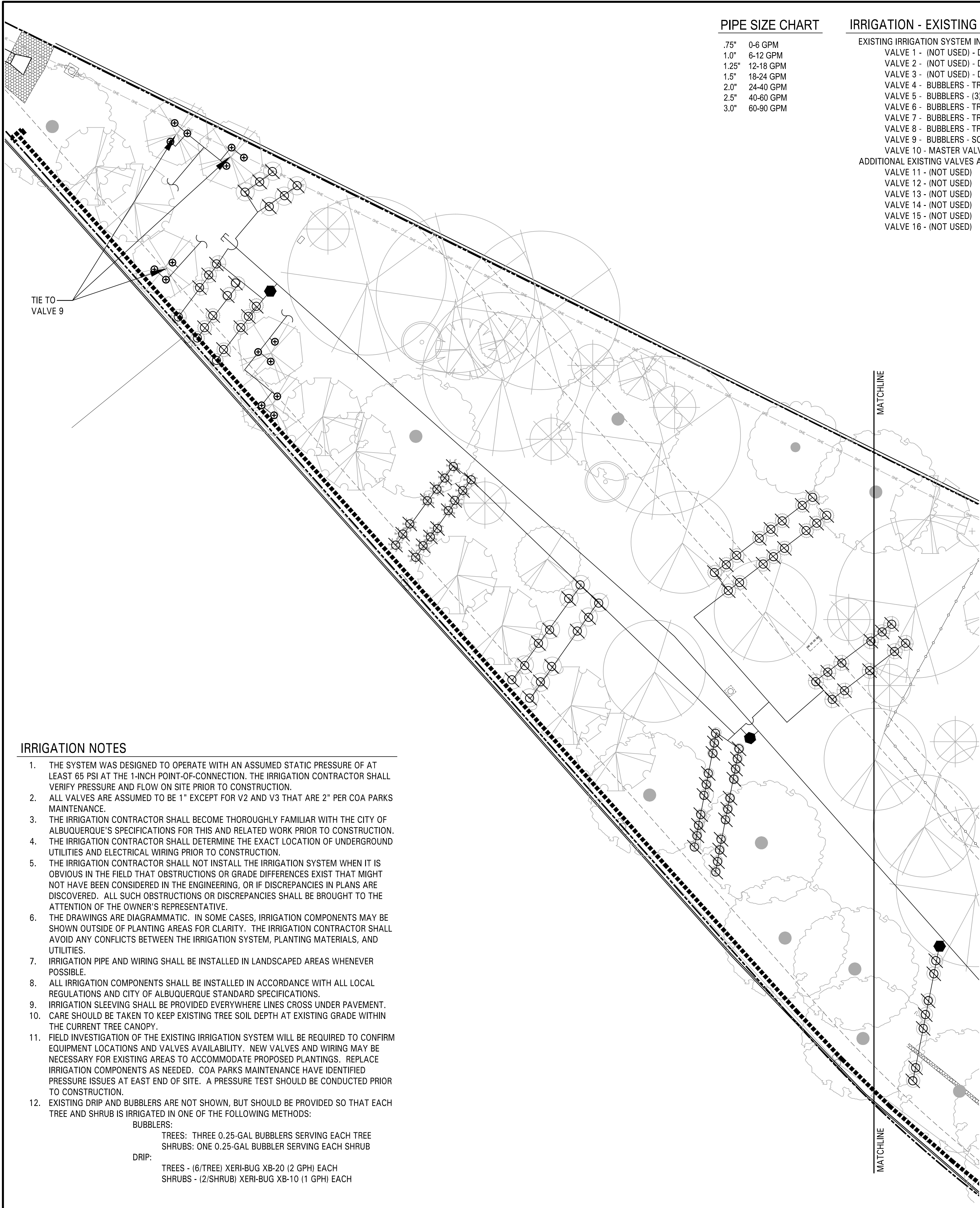
TOM BOLACK URBAN FOREST PARK

PROJECT #783711
SEPTEMBER 2013

X

RECORD DRAWINGS
DECEMBER 2014

[illegible]



PIPE SIZE CHART

.75"	0-6 GPM
1.0"	6-12 GPM
1.25"	12-18 GPM
1.5"	18-24 GPM
2.0"	24-40 GPM
2.5"	40-60 GPM
3.0"	60-90 GPM

IRRIGATION - EXISTING VALVES

EXISTING IRRIGATION SYSTEM INCLUDES 16 VALVE STATIONS AS FOLLOWS:
VALVE 1 - (NOT USED) - DRIP - NATIVE PLANTS IN SW AREA (ADDING 112 SHRUBS)
VALVE 2 - (NOT USED) - DRIP - NATIVE PLANTS IN CTR AREA (ADDING 153 SHRUBS)
VALVE 3 - (NOT USED) - DRIP - NATIVE PLANTS IN EAST AREA (ADDING 138 SHRUBS)
VALVE 4 - BUBBLERS - TREES SOUTH OF HILL, EAST TO WEST
VALVE 5 - BUBBLERS - (3) TREES NORTH TO SOUTH OF WALKWAY (ADDING 165 SHRUBS)
VALVE 6 - BUBBLERS - TREES ON HILL SOUTH OF WALKWAY, EAST TO WEST
VALVE 7 - BUBBLERS - TREES NORTH OF WALKWAY, EAST TO WEST (ADDING 32 TREES)
VALVE 8 - BUBBLERS - TREES IN FENCED AREA OF DOGPARK (ADDING 18 TREES)
VALVE 9 - BUBBLERS - SOUTH AND WEST OF DOGPARK (ADDING 5 TREES)
VALVE 10 - MASTER VALVE
ADDITIONAL EXISTING VALVES ARE ASSUMED TO BE ABANDONED DRIP, NOT WIRED:
VALVE 11 - (NOT USED)
VALVE 12 - (NOT USED)
VALVE 13 - (NOT USED)
VALVE 14 - (NOT USED)
VALVE 15 - (NOT USED)
VALVE 16 - (NOT USED)

IRRIGATION EQUIPMENT SCHEDULE

SYMBOL	DESCRIPTION
	EXISTING 1" MUNICIPAL WATER METER
	EXISTING IRRIGATION CONTROLLER: 16-STATION SCORPIO
	EXISTING 2" BACKFLOW PREVENTION ASSEMBLY. BACKFLOW PREVENTER IN HOTBOX HEATED ENCLOSURE.
	SLEEVING: CLASS 200 PVC (MIN. 2 SIZES LARGER THAN PIPE TO BE SLEEVED) EXISTING SLEEVING LOCATIONS ARE UNKNOWN. PROPOSED LOCATIONS MAY BE RELOCATED TO ACCOMMODATE USING EXISTING SLEEVING WHERE APPROPRIATE.
	EXISTING IRRIGATION MAINLINE (ASSUMED LOCATION TO BE FIELD INVESTIGATED AS NEEDED.)
	EXISTING LATERAL PIPE (NOT SHOWN) LATERAL PIPE: CLASS 200 PVC, 18" DEPTH, 3/4" UNLESS NOTED OTHERWISE.
	EXISTING MASTER VALVE
	EXISTING REMOTE CONTROL BUBBLER VALVE ASSEMBLY
	BUBBLER ASSEMBLY: RAIN BIRD 1400 SERIES PRESSURE COMPENSATING BUBBLER. 1401 BUBBLER - 0.25 GPM @ 30 PSI. ONE (1) PER SHRUB, THREE (3) PER TREE. NOTE: EXISTING BUBBLERS NOT SHOWN. PROPOSED BUBBLERS SHALL BE PROVIDED FOR ALL TREES ACROSS SITE (REPLACE EXISTING AS NEEDED) AND FOR PROPOSED SHRUBS WITHIN THE MAIN ENTRY AREA. PROPOSED SHRUBS OUTSIDE THE MAIN ENTRY AREA WILL HAVE DRIP EMITTERS (SEE SHEET 3 FOR MAIN ENTRY BOUNDARY).
	EXISTING AUTOMATIC DRIP VALVE ASSEMBLY
	EXISTING QUICK-COUPLER VALVE
	EXISTING BALL VALVE
	RAINBIRD PSI-M30X-075 IN-LINE PRESSURE REGULATOR LOCATED IN 6" ROUND VALVE BOX
	EMITTER DEVICE: RAIN BIRD XERI-BUG EMITTERS WITH 24" POLYFLEX RISER & ADAPTER ASSEMBLY AS DEFINED BELOW: TREES - (6/TREE) XERI-BUG XB-20 (2 GPH) EACH SHRUBS - (2/SHRUB) XERI-BUG XB-10 (1 GPH) EACH NOTE: SPACE EMITTERS EVENLY WITHIN ROOT ZONE (MIN. 18" SEPARATION); ALWAYS PLACE EMITTERS ON UPHILL SIDE OF PLANT MATERIAL ON SLOPES.
	INDICATES VALVE STATION NUMBER
	INDICATES TYPE OF IRRIGATION (B = BUBBLER, D = DRIP)
	INDICATES REMOTE CONTROL VALVE SIZE IN INCHES

WATERING SCHEDULE

NOTE: RUNTIMES SHALL BE CALCULATED TO APPLY 3 GALLONS OF WATER PER SHRUB AND 9 GALLONS OF WATER PER TREE PER IRRIGATION CYCLE.

SYSTEMS ARE GENERALLY DESIGNED TO OPERATE FOR APPROXIMATELY ONE HOUR OF RUN TIME PER WEEK AFTER PLANT ESTABLISHMENT. WATERING SHALL OCCUR MORE OFTEN DURING THE FIRST TWO YEARS. ONCE NATIVE OR XERIC PLANTS THAT DON'T GROW WELL ON REGULARLY MOIST SOILS ARE ESTABLISHED, OPERATE THE SYSTEM WEEKLY ON ESTABLISHED PLANTS AND LET SOIL DRY OUT IN BETWEEN WATERING. MORE WATER WILL BE REQUIRED IN PEAK SUMMER HEAT THAN IN COOLER SPRING AND FALL TEMPERATURES SO ADJUST IRRIGATION RUN TIMES ACCORDINGLY.

DAILY HIGH TEMPERATURE	WATERING TIME	INTERVAL (PRE / POST ESTABLISHMENT)	EMITTER ALLOCATION
50°-75°	0.5 HOURS	EVERY OTHER DAY / WEEKLY	SEE PLANT SCHEDULE
75°-95°	1.0 HOURS	EVERY OTHER DAY / WEEKLY	SEE PLANT SCHEDULE
95°-115°	2.0 HOURS	EVERY OTHER DAY / WEEKLY	SEE PLANT SCHEDULE

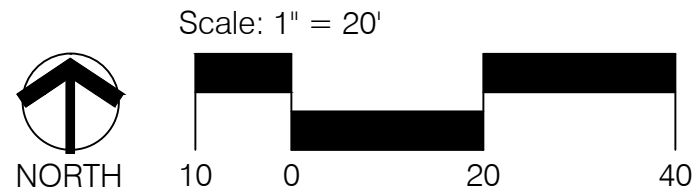
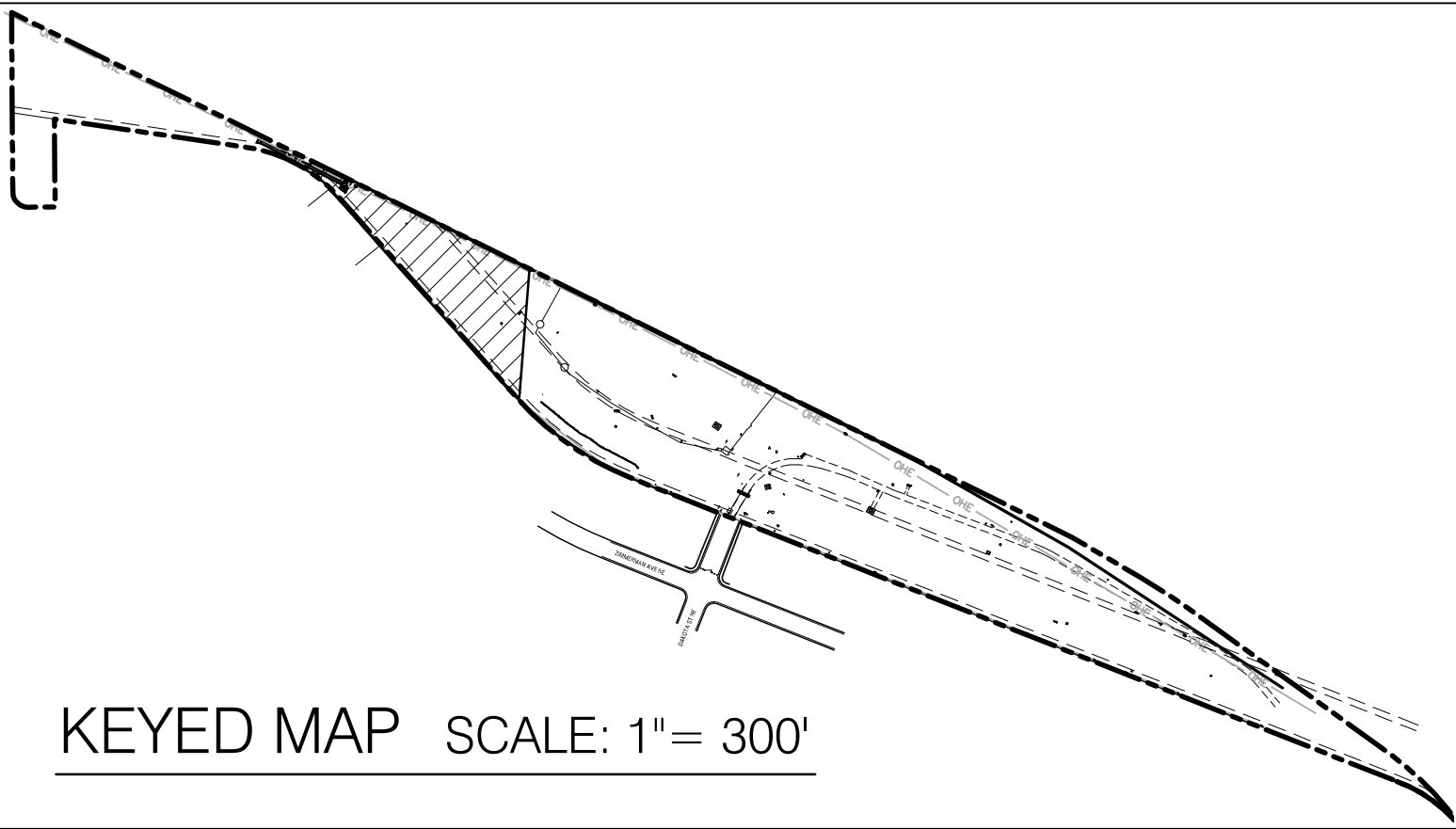
IRRIGATION NOTES

- THE SYSTEM WAS DESIGNED TO OPERATE WITH AN ASSUMED STATIC PRESSURE OF AT LEAST 65 PSI AT THE 1-INCH POINT-OF-CONNECTION. THE IRRIGATION CONTRACTOR SHALL VERIFY PRESSURE AND FLOW ON SITE PRIOR TO CONSTRUCTION.
- ALL VALVES ARE ASSUMED TO BE 1" EXCEPT FOR V2 AND V3 THAT ARE 2" PER COA PARKS MAINTENANCE.
- THE IRRIGATION CONTRACTOR SHALL BECOME THOROUGHLY FAMILIAR WITH THE CITY OF ALBUQUERQUE'S SPECIFICATIONS FOR THIS AND RELATED WORK PRIOR TO CONSTRUCTION.
- THE IRRIGATION CONTRACTOR SHALL DETERMINE THE EXACT LOCATION OF UNDERGROUND UTILITIES AND ELECTRICAL WIRING PRIOR TO CONSTRUCTION.
- THE IRRIGATION CONTRACTOR SHALL NOT INSTALL THE IRRIGATION SYSTEM WHEN IT IS OBVIOUS IN THE FIELD THAT OBSTRUCTIONS OR GRADE DIFFERENCES EXIST THAT MIGHT NOT HAVE BEEN CONSIDERED IN THE ENGINEERING. OR IF DISCREPANCIES IN PLANS ARE DISCOVERED, ALL SUCH OBSTRUCTIONS OR DISCREPANCIES SHALL BE BROUGHT TO THE ATTENTION OF THE OWNER'S REPRESENTATIVE.
- THE DRAWINGS ARE DIAGRAMMATIC. IN SOME CASES, IRRIGATION COMPONENTS MAY BE SHOWN OUTSIDE OF PLANTING AREAS FOR CLARITY. THE IRRIGATION CONTRACTOR SHALL AVOID ANY CONFLICTS BETWEEN THE IRRIGATION SYSTEM, PLANTING MATERIALS, AND UTILITIES.
- IRRIGATION PIPE AND WIRING SHALL BE INSTALLED IN LANDSCAPED AREAS WHENEVER POSSIBLE.
- ALL IRRIGATION COMPONENTS SHALL BE INSTALLED IN ACCORDANCE WITH ALL LOCAL REGULATIONS AND CITY OF ALBUQUERQUE STANDARD SPECIFICATIONS.
- IRRIGATION SLEEVING SHALL BE PROVIDED EVERYWHERE LINES CROSS UNDER PAVEMENT.
- CARE SHOULD BE TAKEN TO KEEP EXISTING TREE SOIL DEPTH AT EXISTING GRADE WITHIN THE CURRENT TREE CANOPY.
- FIELD INVESTIGATION OF THE EXISTING IRRIGATION SYSTEM WILL BE REQUIRED TO CONFIRM EQUIPMENT LOCATIONS AND VALVES AVAILABILITY. NEW VALVES AND WIRING MAY BE NECESSARY FOR EXISTING AREAS TO ACCOMMODATE PROPOSED PLANTINGS. REPLACE IRRIGATION COMPONENTS AS NEEDED. COA PARKS MAINTENANCE HAVE IDENTIFIED PRESSURE ISSUES AT EAST END OF SITE. A PRESSURE TEST SHOULD BE CONDUCTED PRIOR TO CONSTRUCTION.
- EXISTING DRIP AND BUBBLERS ARE NOT SHOWN, BUT SHOULD BE PROVIDED SO THAT EACH TREE AND SHRUB IS IRRIGATED IN ONE OF THE FOLLOWING METHODS:
BUBBLERS:
TREES: THREE 0.25-GAL BUBBLERS SERVING EACH TREE
SHRUBS: ONE 0.25-GAL BUBBLER SERVING EACH SHRUB
DRIP:
TREES - (6/TREE) XERI-BUG XB-20 (2 GPH) EACH
SHRUBS - (2/SHRUB) XERI-BUG XB-10 (1 GPH) EACH

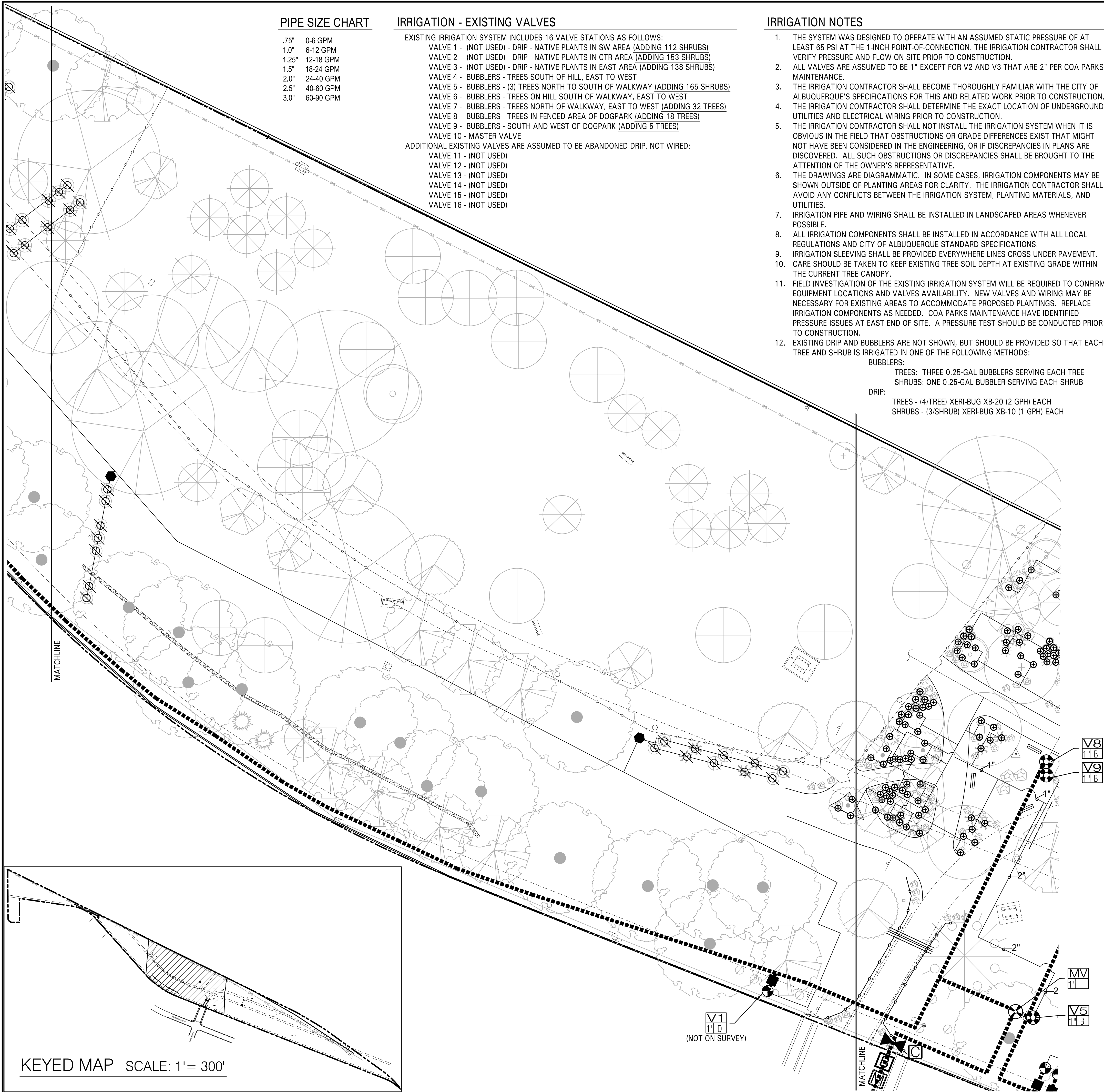
REDRAWN FOR
RECORD PURPOSES

RECORD DRAWINGS

THIS RECORD DRAWING HAS BEEN PREPARED, BASED UPON INFORMATION FURNISHED BY THE CONTRACTOR. THE DESIGN PROFESSIONAL HAS NOT INDEPENDENTLY REVIEWED THE ACCURACY OF THE INFORMATION PROVIDED. THESE RECORD DRAWINGS ACCURATELY DEPICT THE FIELD CHANGES WHICH WERE REPORTED BY THE CONTRACTOR.



		CONSENSUS PLANNING, INC. <i>Planning / Landscape Architecture</i> 302 Eighth Street NW Albuquerque, NM 87102 (505) 764-9801 Fax 842-5495 e-mail: cp@consensusplanning.com	
CITY OF ALBUQUERQUE PARKS AND RECREATION DEPARTMENT STRATEGIC PLANNING AND DESIGN DIVISION			
TITLE: TOM BOLACK URBAN FOREST PARK IRRIGATION PLAN			
Design Review Committee	City Engineer Approval	Mo. / Day / Yr.	
Last Design Update		Mo. / Day / Yr.	
		Mo. / Day / Yr.	
		Mo. / Day / Yr.	
		Mo. / Day / Yr.	
City Project No.	783711	Zone Map No.	J-18
Sheet		5	of 12



PIPE SIZE CHART

.75"	0-6 GPM
1.0"	6-12 GPM
1.25"	12-18 GPM
1.5"	18-24 GPM
2.0"	24-40 GPM
2.5"	40-60 GPM
3.0"	60-90 GPM

IRRIGATION - EXISTING VALVES

EXISTING IRRIGATION SYSTEM INCLUDES 16 VALVE STATIONS AS FOLLOWS:
VALVE 1 - (NOT USED) - DRIP - NATIVE PLANTS IN SW AREA (ADDING 112 SHRUBS)
VALVE 2 - (NOT USED) - DRIP - NATIVE PLANTS IN CTR AREA (ADDING 153 SHRUBS)
VALVE 3 - (NOT USED) - DRIP - NATIVE PLANTS IN EAST AREA (ADDING 138 SHRUBS)
VALVE 4 - BUBBLERS - TREES SOUTH OF HILL, EAST TO WEST
VALVE 5 - BUBBLERS - (3) TREES NORTH TO SOUTH OF WALKWAY (ADDING 165 SHRUBS)
VALVE 6 - BUBBLERS - TREES ON HILL SOUTH OF WALKWAY, EAST TO WEST
VALVE 7 - BUBBLERS - TREES NORTH OF WALKWAY, EAST TO WEST (ADDING 32 TREES)
VALVE 8 - BUBBLERS - TREES IN FENCED AREA OF DOGPARK (ADDING 18 TREES)
VALVE 9 - BUBBLERS - SOUTH AND WEST OF DOGPARK (ADDING 5 TREES)
VALVE 10 - MASTER VALVE
ADDITIONAL EXISTING VALVES ARE ASSUMED TO BE ABANDONED DRIP, NOT WIRED:
VALVE 11 - (NOT USED)
VALVE 12 - (NOT USED)
VALVE 13 - (NOT USED)
VALVE 14 - (NOT USED)
VALVE 15 - (NOT USED)
VALVE 16 - (NOT USED)

IRRIGATION NOTES

- THE SYSTEM WAS DESIGNED TO OPERATE WITH AN ASSUMED STATIC PRESSURE OF AT LEAST 65 PSI AT THE 1-INCH POINT-OF-CONNECTION. THE IRRIGATION CONTRACTOR SHALL VERIFY PRESSURE AND FLOW ON SITE PRIOR TO CONSTRUCTION.
- ALL VALVES ARE ASSUMED TO BE 1" EXCEPT FOR V2 AND V3 THAT ARE 2" PER COA PARKS MAINTENANCE.
- THE IRRIGATION CONTRACTOR SHALL BECOME THOROUGHLY FAMILIAR WITH THE CITY OF ALBUQUERQUE'S SPECIFICATIONS FOR THIS AND RELATED WORK PRIOR TO CONSTRUCTION.
- THE IRRIGATION CONTRACTOR SHALL DETERMINE THE EXACT LOCATION OF UNDERGROUND UTILITIES AND ELECTRICAL WIRING PRIOR TO CONSTRUCTION.
- THE IRRIGATION CONTRACTOR SHALL NOT INSTALL THE IRRIGATION SYSTEM WHEN IT IS OBVIOUS IN THE FIELD THAT OBSTRUCTIONS OR GRADE DIFFERENCES EXIST THAT MIGHT NOT HAVE BEEN CONSIDERED IN THE ENGINEERING, OR IF DISCREPANCIES IN PLANS ARE DISCOVERED. ALL SUCH OBSTRUCTIONS OR DISCREPANCIES SHALL BE BROUGHT TO THE ATTENTION OF THE OWNER'S REPRESENTATIVE.
- THE DRAWINGS ARE DIAGRAMMATIC. IN SOME CASES, IRRIGATION COMPONENTS MAY BE SHOWN OUTSIDE OF PLANTING AREAS FOR CLARITY. THE IRRIGATION CONTRACTOR SHALL AVOID ANY CONFLICTS BETWEEN THE IRRIGATION SYSTEM, PLANTING MATERIALS, AND UTILITIES.
- IRRIGATION PIPE AND WIRING SHALL BE INSTALLED IN LANDSCAPED AREAS WHENEVER POSSIBLE.
- ALL IRRIGATION COMPONENTS SHALL BE INSTALLED IN ACCORDANCE WITH ALL LOCAL REGULATIONS AND CITY OF ALBUQUERQUE STANDARD SPECIFICATIONS.
- IRRIGATION SLEEVING SHALL BE PROVIDED EVERYWHERE LINES CROSS UNDER PAVEMENT.
- CARE SHOULD BE TAKEN TO KEEP EXISTING TREE SOIL DEPTH AT EXISTING GRADE WITHIN THE CURRENT TREE CANOPY.
- FIELD INVESTIGATION OF THE EXISTING IRRIGATION SYSTEM WILL BE REQUIRED TO CONFIRM EQUIPMENT LOCATIONS AND VALVES AVAILABILITY. NEW VALVES AND WIRING MAY BE NECESSARY FOR EXISTING AREAS TO ACCOMMODATE PROPOSED PLANTINGS. REPLACE IRRIGATION COMPONENTS AS NEEDED. COA PARKS MAINTENANCE HAVE IDENTIFIED PRESSURE ISSUES AT EAST END OF SITE. A PRESSURE TEST SHOULD BE CONDUCTED PRIOR TO CONSTRUCTION.
- EXISTING DRIP AND BUBBLERS ARE NOT SHOWN, BUT SHOULD BE PROVIDED SO THAT EACH TREE AND SHRUB IS IRRIGATED IN ONE OF THE FOLLOWING METHODS:
BUBBLERS:
TREES: THREE 0.25-GAL BUBBLERS SERVING EACH TREE
SHRUBS: ONE 0.25-GAL BUBBLER SERVING EACH SHRUB
DRIP:
TREES - (4/TREE) XERI-BUG XB-20 (2 GPH) EACH
SHRUBS - (3/SHRUB) XERI-BUG XB-10 (1 GPH) EACH

IRRIGATION EQUIPMENT SCHEDULE

SYMBOL	DESCRIPTION
	EXISTING 1" MUNICIPAL WATER METER
	EXISTING IRRIGATION CONTROLLER: 16-STATION SCORPIO
	EXISTING 2" BACKFLOW PREVENTION ASSEMBLY. BACKFLOW PREVENTER IN HOTBOX HEATED ENCLOSURE.
	SLEEVING: CLASS 200 PVC (MIN. 2 SIZES LARGER THAN PIPE TO BE SLEEVED) EXISTING SLEEVING LOCATIONS ARE UNKNOWN. PROPOSED LOCATIONS MAY BE RELOCATED TO ACCOMMODATE USING EXISTING SLEEVING WHERE APPROPRIATE.
	EXISTING IRRIGATION MAINLINE (ASSUMED LOCATION TO BE FIELD INVESTIGATED AS NEEDED.)
	EXISTING LATERAL PIPE (NOT SHOWN)
	LATERAL PIPE: CLASS 200 PVC, 18" DEPTH, 3/4" UNLESS NOTED OTHERWISE.
	EXISTING MASTER VALVE
	EXISTING REMOTE CONTROL BUBBLER VALVE ASSEMBLY
	BUBBLER ASSEMBLY: RAIN BIRD 1400 SERIES PRESSURE COMPENSATING BUBBLER. 1401 BUBBLER - 0.25 GPM @ 30 PSI. ONE (1) PER SHRUB, THREE (3) PER TREE. NOTE: EXISTING BUBBLERS NOT SHOWN. PROPOSED BUBBLERS SHALL BE PROVIDED FOR ALL TREES ACROSS SITE (REPLACE EXISTING AS NEEDED) AND FOR PROPOSED SHRUBS WITHIN THE MAIN ENTRY AREA. PROPOSED SHRUBS OUTSIDE THE MAIN ENTRY AREA WILL HAVE DRIP EMITTERS (SEE SHEET 3 FOR MAIN ENTRY BOUNDARY).
	EXISTING AUTOMATIC DRIP VALVE ASSEMBLY
	EXISTING QUICK-COUPLER VALVE
	EXISTING BALL VALVE
	RAINBIRD PSI-M30X-075 IN-LINE PRESSURE REGULATOR LOCATED IN 6" ROUND VALVE BOX
	EMITTER DEVICE: RAIN BIRD XERI-BUG EMITTERS WITH 24" POLYFLEX RISER & ADAPTER ASSEMBLY AS DEFINED BELOW: TREES - (6/TREE) XERI-BUG XB-20 (2 GPH) EACH SHRUBS - (2/SHRUB) XERI-BUG XB-10 (1 GPH) EACH NOTE: SPACE EMITTERS EVENLY WITHIN ROOT ZONE (MIN. 18" SEPARATION); ALWAYS PLACE EMITTERS ON UPHILL SIDE OF PLANT MATERIAL ON SLOPES.
	INDICATES VALVE STATION NUMBER
	INDICATES TYPE OF IRRIGATION (B = BUBBLER, D = DRIP)
	INDICATES REMOTE CONTROL VALVE SIZE IN INCHES

WATERING SCHEDULE

NOTE: RUNTIMES SHALL BE CALCULATED TO APPLY 3 GALLONS OF WATER PER SHRUB AND 9 GALLONS OF WATER PER TREE PER IRRIGATION CYCLE.

SYSTEMS ARE GENERALLY DESIGNED TO OPERATE FOR APPROXIMATELY ONE HOUR OF RUN TIME PER WEEK AFTER PLANT ESTABLISHMENT. WATERING SHALL OCCUR MORE OFTEN DURING THE FIRST TWO YEARS. ONCE NATIVE OR XERIC PLANTS THAT DON'T GROW WELL ON REGULARLY MOIST SOILS ARE ESTABLISHED, OPERATE THE SYSTEM WEEKLY ON ESTABLISHED PLANTS AND LET SOIL DRY OUT IN BETWEEN WATERING. MORE WATER WILL BE REQUIRED IN PEAK SUMMER HEAT THAN IN COOLER SPRING AND FALL TEMPERATURES SO ADJUST IRRIGATION RUN TIMES ACCORDINGLY.

DAILY HIGH TEMPERATURE	WATERING TIME	INTERVAL (PRE / POST ESTABLISHMENT)	EMITTER ALLOCATION
50°-75°	0.5 HOURS	EVERY OTHER DAY / WEEKLY	SEE PLANT SCHEDULE
75°-95°	1.0 HOURS	EVERY OTHER DAY / WEEKLY	SEE PLANT SCHEDULE
95°-115°	2.0 HOURS	EVERY OTHER DAY / WEEKLY	SEE PLANT SCHEDULE

REDRAWN FOR
RECORD PURPOSES

RECORD DRAWINGS

THIS RECORD DRAWING HAS BEEN PREPARED, BASED UPON INFORMATION FURNISHED BY THE CONTRACTOR. THE DESIGN PROFESSIONAL HAS NOT INDEPENDENTLY REVIEWED THE ACCURACY OF THE INFORMATION PROVIDED. THESE RECORD DRAWINGS ACCURATELY DEPICT THE FIELD CHANGES WHICH WERE REPORTED BY THE CONTRACTOR.

CONSENSUS PLANNING, INC.
Planning / Landscape Architecture
302 Eighth Street NW
Albuquerque, NM 87102
(505) 764-9801 Fax 842-5495
e-mail: cp@consensusplanning.com

CITY OF ALBUQUERQUE
PARKS AND RECREATION DEPARTMENT
STRATEGIC PLANNING AND DESIGN DIVISION

TITLE: TOM BOLACK URBAN FOREST PARK
IRRIGATION PLAN

Design Review Committee City Engineer Approval

City Project No. 783711

Zone Map No. J-18

Sheet 6 of 12



Scale: 1" = 20'

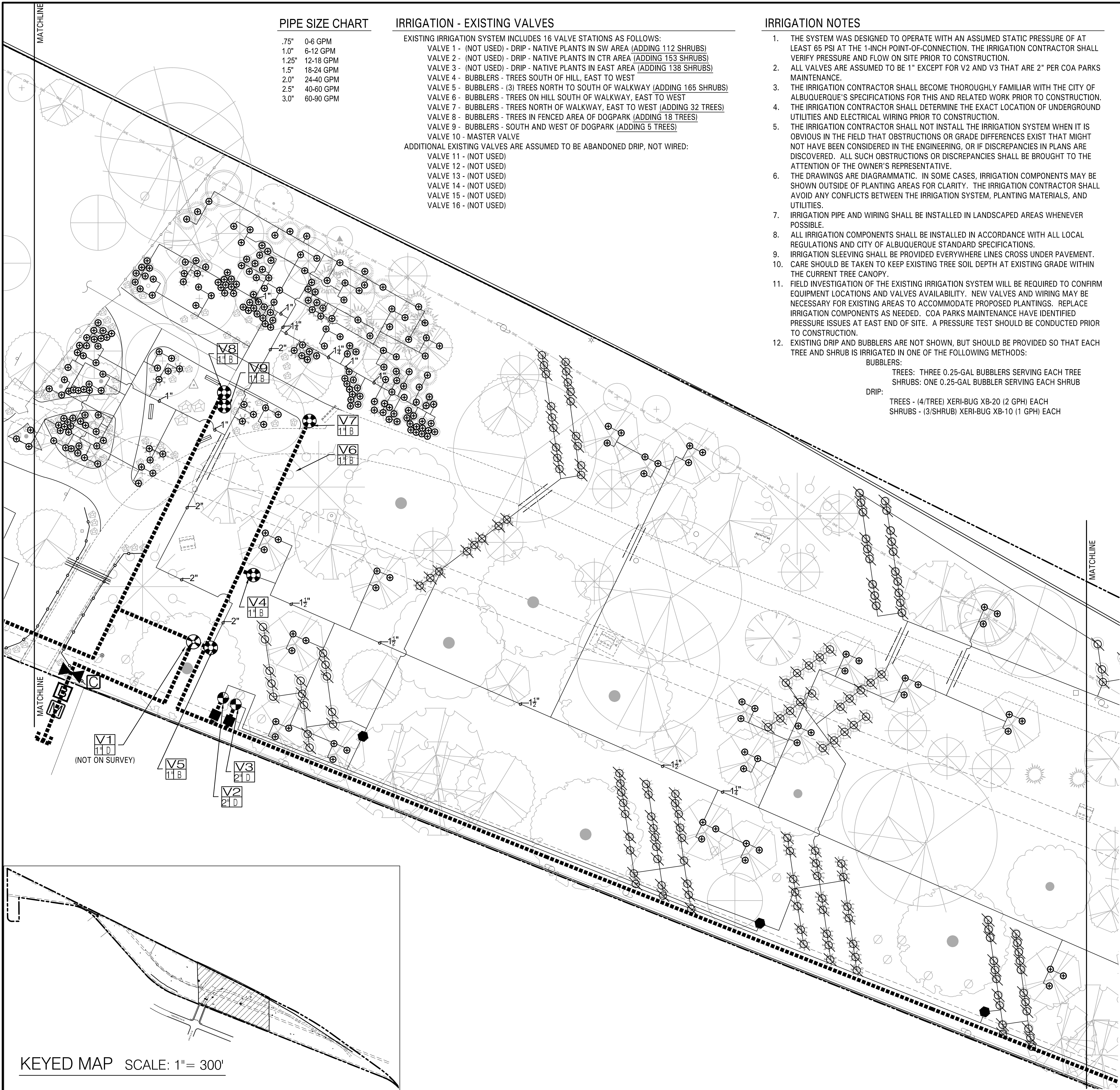


FINAL FOR CONSTRUCTION

TOM BOLACK URBAN FOREST PARK

PROJECT #783711
SEPTEMBER 2013

RECORD DRAWINGS
DECEMBER 2014



PIPE SIZE CHART

.75"	0-6 GPM
1.0"	6-12 GPM
1.25"	12-18 GPM
1.5"	18-24 GPM
2.0"	24-40 GPM
2.5"	40-60 GPM
3.0"	60-90 GPM

IRRIGATION - EXISTING VALVES

EXISTING IRRIGATION SYSTEM INCLUDES 16 VALVE STATIONS AS FOLLOWS:
VALVE 1 - (NOT USED) - DRIP - NATIVE PLANTS IN SW AREA (ADDING 112 SHRUBS)
VALVE 2 - (NOT USED) - DRIP - NATIVE PLANTS IN CTR AREA (ADDING 153 SHRUBS)
VALVE 3 - (NOT USED) - DRIP - NATIVE PLANTS IN EAST AREA (ADDING 138 SHRUBS)
VALVE 4 - BUBBLERS - TREES SOUTH OF HILL, EAST TO WEST
VALVE 5 - BUBBLERS - (3) TREES NORTH TO SOUTH OF WALKWAY (ADDING 165 SHRUBS)
VALVE 6 - BUBBLERS - TREES ON HILL SOUTH OF WALKWAY, EAST TO WEST
VALVE 7 - BUBBLERS - TREES NORTH OF WALKWAY, EAST TO WEST (ADDING 32 TREES)
VALVE 8 - BUBBLERS - TREES IN FENCED AREA OF DOGPARK (ADDING 18 TREES)
VALVE 9 - BUBBLERS - SOUTH AND WEST OF DOGPARK (ADDING 5 TREES)
VALVE 10 - MASTER VALVE
ADDITIONAL EXISTING VALVES ARE ASSUMED TO BE ABANDONED DRIP, NOT WIRED:
VALVE 11 - (NOT USED)
VALVE 12 - (NOT USED)
VALVE 13 - (NOT USED)
VALVE 14 - (NOT USED)
VALVE 15 - (NOT USED)
VALVE 16 - (NOT USED)

IRRIGATION NOTES

- THE SYSTEM WAS DESIGNED TO OPERATE WITH AN ASSUMED STATIC PRESSURE OF AT LEAST 65 PSI AT THE 1-INCH POINT-OF-CONNECTION. THE IRRIGATION CONTRACTOR SHALL VERIFY PRESSURE AND FLOW ON SITE PRIOR TO CONSTRUCTION.
- ALL VALVES ARE ASSUMED TO BE 1" EXCEPT FOR V2 AND V3 THAT ARE 2" PER COA PARKS MAINTENANCE.
- THE IRRIGATION CONTRACTOR SHALL BECOME THOROUGHLY FAMILIAR WITH THE CITY OF ALBUQUERQUE'S SPECIFICATIONS FOR THIS AND RELATED WORK PRIOR TO CONSTRUCTION.
- THE IRRIGATION CONTRACTOR SHALL DETERMINE THE EXACT LOCATION OF UNDERGROUND UTILITIES AND ELECTRICAL WIRING PRIOR TO CONSTRUCTION.
- THE IRRIGATION CONTRACTOR SHALL NOT INSTALL THE IRRIGATION SYSTEM WHEN IT IS OBVIOUS IN THE FIELD THAT OBSTRUCTIONS OR GRADE DIFFERENCES EXIST THAT MIGHT NOT HAVE BEEN CONSIDERED IN THE ENGINEERING, OR IF DISCREPANCIES IN PLANS ARE DISCOVERED. ALL SUCH OBSTRUCTIONS OR DISCREPANCIES SHALL BE BROUGHT TO THE ATTENTION OF THE OWNER'S REPRESENTATIVE.
- THE DRAWINGS ARE DIAGRAMMATIC. IN SOME CASES, IRRIGATION COMPONENTS MAY BE SHOWN OUTSIDE OF PLANTING AREAS FOR CLARITY. THE IRRIGATION CONTRACTOR SHALL AVOID ANY CONFLICTS BETWEEN THE IRRIGATION SYSTEM, PLANTING MATERIALS, AND UTILITIES.
- IRRIGATION PIPE AND WIRING SHALL BE INSTALLED IN LANDSCAPED AREAS WHENEVER POSSIBLE.
- ALL IRRIGATION COMPONENTS SHALL BE INSTALLED IN ACCORDANCE WITH ALL LOCAL REGULATIONS AND CITY OF ALBUQUERQUE STANDARD SPECIFICATIONS.
- IRRIGATION SLEEVING SHALL BE PROVIDED EVERYWHERE LINES CROSS UNDER PAVEMENT.
- CARE SHOULD BE TAKEN TO KEEP EXISTING TREE SOIL DEPTH AT EXISTING GRADE WITHIN THE CURRENT TREE CANOPY.
- FIELD INVESTIGATION OF THE EXISTING IRRIGATION SYSTEM WILL BE REQUIRED TO CONFIRM EQUIPMENT LOCATIONS AND VALVES AVAILABILITY. NEW VALVES AND WIRING MAY BE NECESSARY FOR EXISTING AREAS TO ACCOMMODATE PROPOSED PLANTINGS. REPLACE IRRIGATION COMPONENTS AS NEEDED. COA PARKS MAINTENANCE HAVE IDENTIFIED PRESSURE ISSUES AT EAST END OF SITE. A PRESSURE TEST SHOULD BE CONDUCTED PRIOR TO CONSTRUCTION.
- EXISTING DRIP AND BUBBLERS ARE NOT SHOWN, BUT SHOULD BE PROVIDED SO THAT EACH TREE AND SHRUB IS IRRIGATED IN ONE OF THE FOLLOWING METHODS:
BUBBLERS:
TREES: THREE 0.25-GAL BUBBLERS SERVING EACH TREE
SHRUBS: ONE 0.25-GAL BUBBLER SERVING EACH SHRUB
DRIP:
TREES - (4/TREE) XERI-BUG XB-20 (2 GPH) EACH
SHRUBS - (3/SHRUB) XERI-BUG XB-10 (1 GPH) EACH

IRRIGATION EQUIPMENT SCHEDULE

SYMBOL	DESCRIPTION
	EXISTING 1" MUNICIPAL WATER METER
	EXISTING IRRIGATION CONTROLLER: 16-STATION SCORPIO
	EXISTING 2" BACKFLOW PREVENTION ASSEMBLY. BACKFLOW PREVENTER IN HOTBOX HEATED ENCLOSURE.
	SLEEVING: CLASS 200 PVC (MIN. 2 SIZES LARGER THAN PIPE TO BE SLEEVED) EXISTING SLEEVING LOCATIONS ARE UNKNOWN. PROPOSED LOCATIONS MAY BE RELOCATED TO ACCOMMODATE USING EXISTING SLEEVING WHERE APPROPRIATE.
	EXISTING IRRIGATION MAINLINE (ASSUMED LOCATION TO BE FIELD INVESTIGATED AS NEEDED.)
	EXISTING LATERAL PIPE (NOT SHOWN)
	LATERAL PIPE: CLASS 200 PVC, 18" DEPTH, 3/4" UNLESS NOTED OTHERWISE.
	EXISTING MASTER VALVE
	EXISTING REMOTE CONTROL BUBBLER VALVE ASSEMBLY
	BUBBLER ASSEMBLY: RAIN BIRD 1400 SERIES PRESSURE COMPENSATING BUBBLER. 1401 BUBBLER - 0.25 GPM @ 30 PSI. ONE (1) PER SHRUB, THREE (3) PER TREE. NOTE: EXISTING BUBBLERS NOT SHOWN. PROPOSED BUBBLERS SHALL BE PROVIDED FOR ALL TREES ACROSS SITE (REPLACE EXISTING AS NEEDED) AND FOR PROPOSED SHRUBS WITHIN THE MAIN ENTRY AREA. PROPOSED SHRUBS OUTSIDE THE MAIN ENTRY AREA WILL HAVE DRIP EMITTERS (SEE SHEET 3 FOR MAIN ENTRY BOUNDARY).
	EXISTING AUTOMATIC DRIP VALVE ASSEMBLY
	EXISTING QUICK-COUPLER VALVE
	EXISTING BALL VALVE
	RAINBIRD PSI-M30X-075 IN-LINE PRESSURE REGULATOR LOCATED IN 6" ROUND VALVE BOX
	EMITTER DEVICE: RAIN BIRD XERI-BUG EMITTERS WITH 24" POLYFLEX RISER & ADAPTER ASSEMBLY AS DEFINED BELOW: TREES - (6/TREE) XERI-BUG XB-20 (2 GPH) EACH SHRUBS - (2/SHRUB) XERI-BUG XB-10 (1 GPH) EACH NOTE: SPACE EMITTERS EVENLY WITHIN ROOT ZONE (MIN. 18" SEPARATION); ALWAYS PLACE EMITTERS ON UPHILL SIDE OF PLANT MATERIAL ON SLOPES.
	INDICATES VALVE STATION NUMBER
	INDICATES TYPE OF IRRIGATION (B = BUBBLER, D = DRIP)
	INDICATES REMOTE CONTROL VALVE SIZE IN INCHES

WATERING SCHEDULE

NOTE: RUNTIMES SHALL BE CALCULATED TO APPLY 3 GALLONS OF WATER PER SHRUB AND 9 GALLONS OF WATER PER TREE PER IRRIGATION CYCLE.

SYSTEMS ARE GENERALLY DESIGNED TO OPERATE FOR APPROXIMATELY ONE HOUR OF RUN TIME PER WEEK AFTER PLANT ESTABLISHMENT. WATERING SHALL OCCUR MORE OFTEN DURING THE FIRST TWO YEARS. ONCE NATIVE OR XERIC PLANTS THAT DON'T GROW WELL ON REGULARLY MOIST SOILS ARE ESTABLISHED, OPERATE THE SYSTEM WEEKLY ON ESTABLISHED PLANTS AND LET SOIL DRY OUT IN BETWEEN WATERING. MORE WATER WILL BE REQUIRED IN PEAK SUMMER HEAT THAN IN COOLER SPRING AND FALL TEMPERATURES SO ADJUST IRRIGATION RUN TIMES ACCORDINGLY.

DAILY HIGH TEMPERATURE	WATERING TIME	INTERVAL (PRE / POST ESTABLISHMENT)	EMITTER ALLOCATION
50°-75°	0.5 HOURS	EVERY OTHER DAY / WEEKLY	SEE PLANT SCHEDULE
75°-95°	1.0 HOURS	EVERY OTHER DAY / WEEKLY	SEE PLANT SCHEDULE
95°-115°	2.0 HOURS	EVERY OTHER DAY / WEEKLY	SEE PLANT SCHEDULE

REDRAWN FOR RECORD PURPOSES

RECORD DRAWINGS

THIS RECORD DRAWING HAS BEEN PREPARED, BASED UPON INFORMATION FURNISHED BY THE CONTRACTOR. THE DESIGN PROFESSIONAL HAS NOT INDEPENDENTLY REVIEWED THE ACCURACY OF THE INFORMATION PROVIDED. THESE RECORD DRAWINGS ACCURATELY DEPICT THE FIELD CHANGES WHICH WERE REPORTED BY THE CONTRACTOR.



CITY OF ALBUQUERQUE
PARKS AND RECREATION DEPARTMENT
STRATEGIC PLANNING AND DESIGN DIVISION

TITLE: TOM BOLACK URBAN FOREST PARK
IRRIGATION PLAN

Design Review Committee City Engineer Approval

City Project No. 783711

Zone Map No. J-18

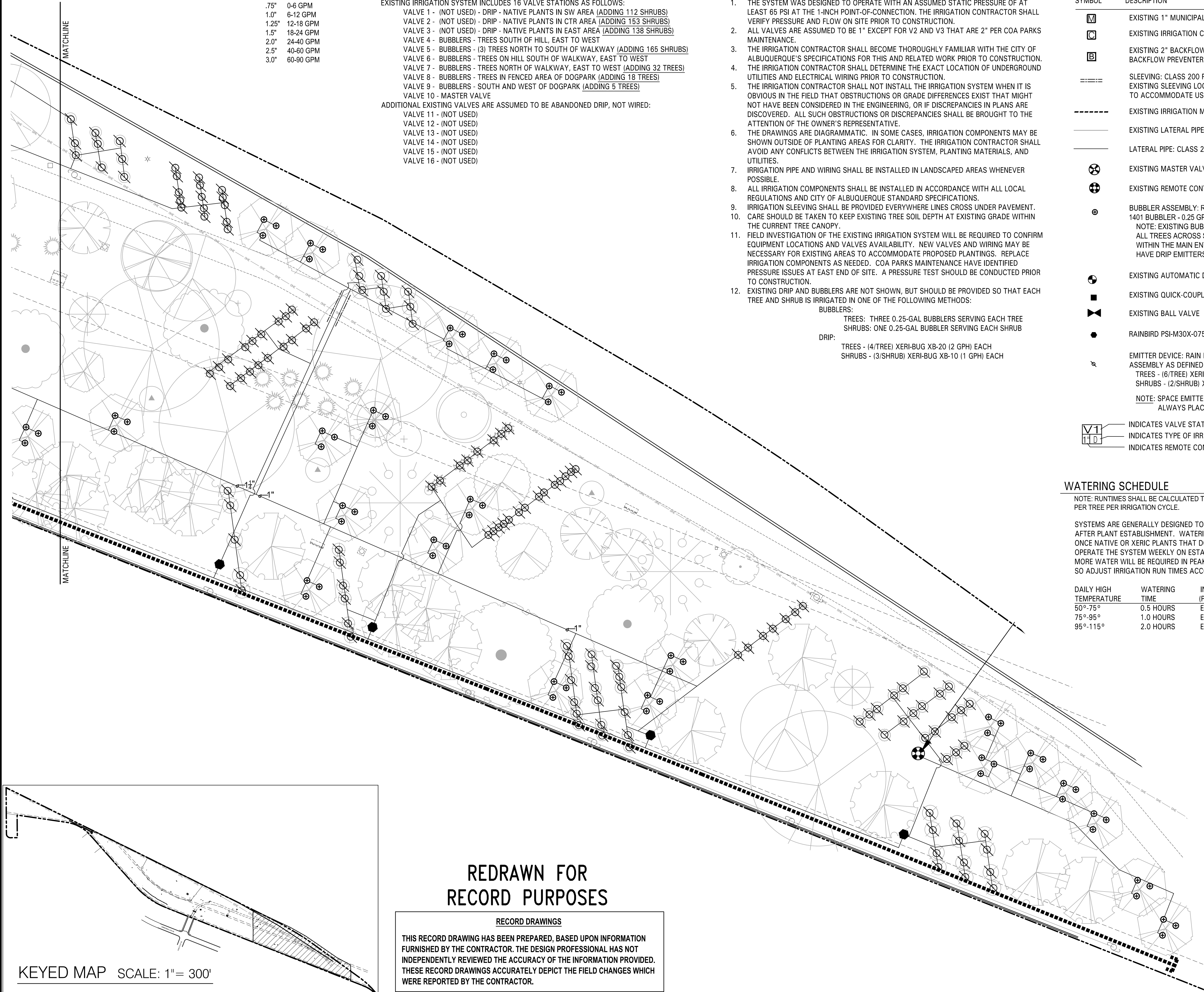
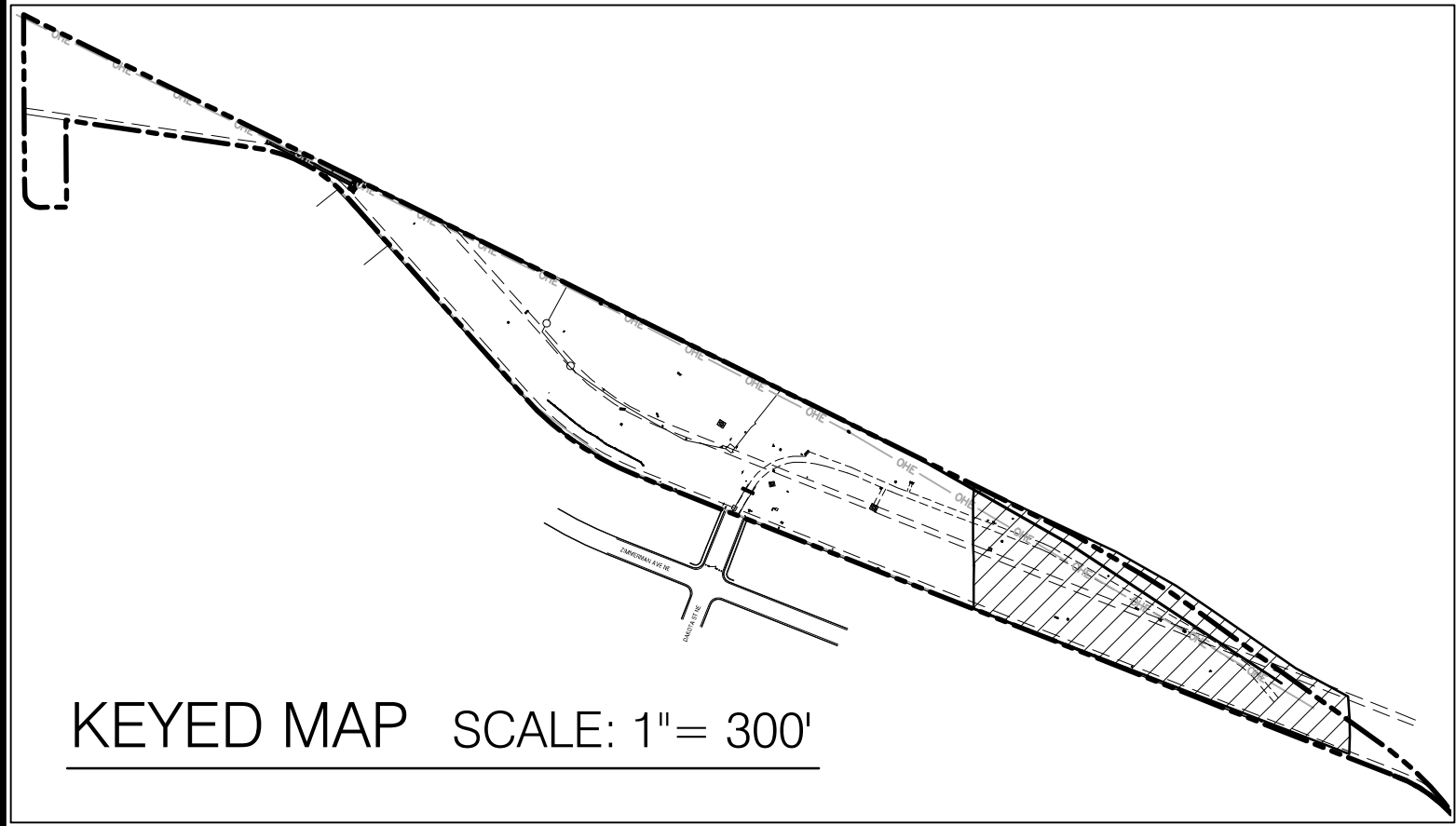
Sheet 7 of 12

FINAL FOR CONSTRUCTION

TOM BOLACK URBAN FOREST PARK

PROJECT #783711
SEPTEMBER 2013

RECORD DRAWINGS
DECEMBER 2014



PIPE SIZE CHART

.75"	0-6 GPM
1.0"	6-12 GPM
1.25"	12-18 GPM
1.5"	18-24 GPM
2.0"	24-40 GPM
2.5"	40-60 GPM
3.0"	60-90 GPM

IRRIGATION - EXISTING VALVES

EXISTING IRRIGATION SYSTEM INCLUDES 16 VALVE STATIONS AS FOLLOWS:

VALVE 1 - (NOT USED) - DRIP - NATIVE PLANTS IN SW AREA (ADDING 112 SHRUBS)

VALVE 2 - (NOT USED) - DRIP - NATIVE PLANTS IN CTR AREA (ADDING 153 SHRUBS)

VALVE 3 - (NOT USED) - DRIP - NATIVE PLANTS IN EAST AREA (ADDING 138 SHRUBS)

VALVE 4 - BUBBLERS - TREES SOUTH OF HILL, EAST TO WEST

VALVE 5 - BUBBLERS - (3) TREES NORTH TO SOUTH OF WALKWAY (ADDING 165 SHRUBS)

VALVE 6 - BUBBLERS - TREES ON HILL SOUTH OF WALKWAY, EAST TO WEST

VALVE 7 - BUBBLERS - TREES NORTH OF WALKWAY, EAST TO WEST (ADDING 32 TREES)

VALVE 8 - BUBBLERS - TREES IN FENCED AREA OF DOGPARK (ADDING 18 TREES)

VALVE 9 - BUBBLERS - SOUTH AND WEST OF DOGPARK (ADDING 5 TREES)

VALVE 10 - MASTER VALVE

ADDITIONAL EXISTING VALVES ARE ASSUMED TO BE ABANDONED DRIP, NOT WIRED:

VALVE 11 - (NOT USED)

VALVE 12 - (NOT USED)

VALVE 13 - (NOT USED)

VALVE 14 - (NOT USED)

VALVE 15 - (NOT USED)

VALVE 16 - (NOT USED)

IRRIGATION NOTES

- THE SYSTEM WAS DESIGNED TO OPERATE WITH AN ASSUMED STATIC PRESSURE OF AT LEAST 65 PSI AT THE 1-INCH POINT-OF-CONNECTION. THE IRRIGATION CONTRACTOR SHALL VERIFY PRESSURE AND FLOW ON SITE PRIOR TO CONSTRUCTION.
- ALL VALVES ARE ASSUMED TO BE 1" EXCEPT FOR V2 AND V3 THAT ARE 2" PER COA PARKS MAINTENANCE.
- THE IRRIGATION CONTRACTOR SHALL BECOME THOROUGHLY FAMILIAR WITH THE CITY OF ALBUQUERQUE'S SPECIFICATIONS FOR THIS AND RELATED WORK PRIOR TO CONSTRUCTION.
- THE IRRIGATION CONTRACTOR SHALL DETERMINE THE EXACT LOCATION OF UNDERGROUND UTILITIES AND ELECTRICAL WIRING PRIOR TO CONSTRUCTION.
- THE IRRIGATION CONTRACTOR SHALL NOT INSTALL THE IRRIGATION SYSTEM WHEN IT IS OBVIOUS IN THE FIELD THAT OBSTRUCTIONS OR GRADE DIFFERENCES EXIST THAT MIGHT NOT HAVE BEEN CONSIDERED IN THE ENGINEERING, OR IF DISCREPANCIES IN PLANS ARE DISCOVERED. ALL SUCH OBSTRUCTIONS OR DISCREPANCIES SHALL BE BROUGHT TO THE ATTENTION OF THE OWNER'S REPRESENTATIVE.
- THE DRAWINGS ARE DIAGRAMMATIC. IN SOME CASES, IRRIGATION COMPONENTS MAY BE SHOWN OUTSIDE OF PLANTING AREAS FOR CLARITY. THE IRRIGATION CONTRACTOR SHALL AVOID ANY CONFLICTS BETWEEN THE IRRIGATION SYSTEM, PLANTING MATERIALS, AND UTILITIES.
- IRRIGATION PIPE AND WIRING SHALL BE INSTALLED IN LANDSCAPED AREAS WHENEVER POSSIBLE.
- ALL IRRIGATION COMPONENTS SHALL BE INSTALLED IN ACCORDANCE WITH ALL LOCAL REGULATIONS AND CITY OF ALBUQUERQUE STANDARD SPECIFICATIONS.
- IRRIGATION SLEEVING SHALL BE PROVIDED EVERYWHERE LINES CROSS UNDER PAVEMENT.
- CARE SHOULD BE TAKEN TO KEEP EXISTING TREE SOIL DEPTH AT EXISTING GRADE WITHIN THE CURRENT TREE CANOPY.
- FIELD INVESTIGATION OF THE EXISTING IRRIGATION SYSTEM WILL BE REQUIRED TO CONFIRM EQUIPMENT LOCATIONS AND VALVES AVAILABILITY. NEW VALVES AND WIRING MAY BE NECESSARY FOR EXISTING AREAS TO ACCOMMODATE PROPOSED PLANTINGS. REPLACE IRRIGATION COMPONENTS AS NEEDED. COA PARKS MAINTENANCE HAVE IDENTIFIED PRESSURE ISSUES AT EAST END OF SITE. A PRESSURE TEST SHOULD BE CONDUCTED PRIOR TO CONSTRUCTION.
- EXISTING DRIP AND BUBBLERS ARE NOT SHOWN, BUT SHOULD BE PROVIDED SO THAT EACH TREE AND SHRUB IS IRRIGATED IN ONE OF THE FOLLOWING METHODS:
 - BUBBLERS:
 - TREES: THREE 0.25-GAL BUBBLERS SERVING EACH TREE
 - SHRUBS: ONE 0.25-GAL BUBBLER SERVING EACH SHRUB
 - DRIP:
 - TREES - (4/TREE) XERI-BUG XB-20 (2 GPH) EACH
 - SHRUBS - (3/SHRUB) XERI-BUG XB-10 (1 GPH) EACH

IRRIGATION EQUIPMENT SCHEDULE

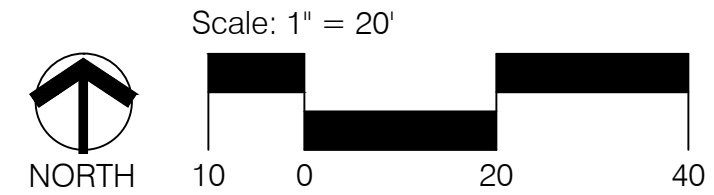
SYMBOL	DESCRIPTION
	EXISTING 1" MUNICIPAL WATER METER
	EXISTING IRRIGATION CONTROLLER: 16-STATION SCORPIO
	EXISTING 2" BACKFLOW PREVENTION ASSEMBLY. BACKFLOW PREVENTER IN HOTBOX HEATED ENCLOSURE.
	SLEEVING: CLASS 200 PVC (MIN. 2 SIZES LARGER THAN PIPE TO BE SLEEVED) EXISTING SLEEVING LOCATIONS ARE UNKNOWN. PROPOSED LOCATIONS MAY BE RELOCATED TO ACCOMMODATE USING EXISTING SLEEVING WHERE APPROPRIATE.
	EXISTING IRRIGATION MAINLINE (ASSUMED LOCATION TO BE FIELD INVESTIGATED AS NEEDED.)
	EXISTING LATERAL PIPE (NOT SHOWN)
	LATERAL PIPE: CLASS 200 PVC, 18" DEPTH, 3/4" UNLESS NOTED OTHERWISE.
	EXISTING MASTER VALVE
	EXISTING REMOTE CONTROL BUBBLER VALVE ASSEMBLY
	BUBBLER ASSEMBLY: RAIN BIRD 1400 SERIES PRESSURE COMPENSATING BUBBLER. 1401 BUBBLER - 0.25 GPM @ 30 PSI. ONE (1) PER SHRUB, THREE (3) PER TREE. NOTE: EXISTING BUBBLERS NOT SHOWN. PROPOSED BUBBLERS SHALL BE PROVIDED FOR ALL TREES ACROSS SITE (REPLACE EXISTING AS NEEDED) AND FOR PROPOSED SHRUBS WITHIN THE MAIN ENTRY AREA. PROPOSED SHRUBS OUTSIDE THE MAIN ENTRY AREA WILL HAVE DRIP EMITTERS (SEE SHEET 3 FOR MAIN ENTRY BOUNDARY).
	EXISTING AUTOMATIC DRIP VALVE ASSEMBLY
	EXISTING QUICK-COUPLER VALVE
	EXISTING BALL VALVE
	RAINBIRD PSI-M30X-075 IN-LINE PRESSURE REGULATOR LOCATED IN 6" ROUND VALVE BOX
	EMITTER DEVICE: RAIN BIRD XERI-BUG EMITTERS WITH 24" POLYFLEX RISER & ADAPTER ASSEMBLY AS DEFINED BELOW: TREES - (6/TREE) XERI-BUG XB-20 (2 GPH) EACH SHRUBS - (2/SHRUB) XERI-BUG XB-10 (1 GPH) EACH NOTE: SPACE EMITTERS EVENLY WITHIN ROOT ZONE (MIN. 18" SEPARATION); ALWAYS PLACE EMITTERS ON UPHILL SIDE OF PLANT MATERIAL ON SLOPES.
	INDICATES VALVE STATION NUMBER
	INDICATES TYPE OF IRRIGATION (B = BUBBLER, D = DRIP)
	INDICATES REMOTE CONTROL VALVE SIZE IN INCHES

WATERING SCHEDULE

NOTE: RUNTIMES SHALL BE CALCULATED TO APPLY 3 GALLONS OF WATER PER SHRUB AND 9 GALLONS OF WATER PER TREE PER IRRIGATION CYCLE.

SYSTEMS ARE GENERALLY DESIGNED TO OPERATE FOR APPROXIMATELY ONE HOUR OF RUN TIME PER WEEK AFTER PLANT ESTABLISHMENT. WATERING SHALL OCCUR MORE OFTEN DURING THE FIRST TWO YEARS. ONCE NATIVE OR XERIC PLANTS THAT DON'T GROW WELL ON REGULARLY MOIST SOILS ARE ESTABLISHED, OPERATE THE SYSTEM WEEKLY ON ESTABLISHED PLANTS AND LET SOIL DRY OUT IN BETWEEN WATERING. MORE WATER WILL BE REQUIRED IN PEAK SUMMER HEAT THAN IN COOLER SPRING AND FALL TEMPERATURES SO ADJUST IRRIGATION RUN TIMES ACCORDINGLY.

DAILY HIGH TEMPERATURE	WATERING TIME	INTERVAL (PRE / POST ESTABLISHMENT)	EMITTER ALLOCATION
50°-75°	0.5 HOURS	EVERY OTHER DAY / WEEKLY	SEE PLANT SCHEDULE
75°-95°	1.0 HOURS	EVERY OTHER DAY / WEEKLY	SEE PLANT SCHEDULE
95°-115°	2.0 HOURS	EVERY OTHER DAY / WEEKLY	SEE PLANT SCHEDULE



CONSENSUS PLANNING, INC.
Planning / Landscape Architecture
302 Eighth Street NW
Albuquerque, NM 87102
(505) 764-9801 Fax 842-5495
e-mail: cp@consensusplanning.com

CITY OF ALBUQUERQUE
PARKS AND RECREATION DEPARTMENT
STRATEGIC PLANNING AND DESIGN DIVISION

TITLE: TOM BOLACK URBAN FOREST PARK
IRRIGATION PLAN

Design Review Committee

City Engineer Approval

Last Design Update

Mo. / Day / Yr.	Mo. / Day / Yr.

City Project No. 783711

Zone Map No. J-18

Sheet 8 of 12

REDRAWN FOR
RECORD PURPOSES

RECORD DRAWINGS

THIS RECORD DRAWING HAS BEEN PREPARED, BASED UPON INFORMATION FURNISHED BY THE CONTRACTOR. THE DESIGN PROFESSIONAL HAS NOT INDEPENDENTLY REVIEWED THE ACCURACY OF THE INFORMATION PROVIDED. THESE RECORD DRAWINGS ACCURATELY DEPICT THE FIELD CHANGES WHICH WERE REPORTED BY THE CONTRACTOR.

REDRAWN FOR
RECORD PURPOSES

RECORD DRAWINGS

THIS RECORD DRAWING HAS BEEN PREPARED, BASED UPON INFORMATION FURNISHED BY THE CONTRACTOR. THE DESIGN PROFESSIONAL HAS NOT INDEPENDENTLY REVIEWED THE ACCURACY OF THE INFORMATION PROVIDED. THESE RECORD DRAWINGS ACCURATELY DEPICT THE FIELD CHANGES WHICH WERE REPORTED BY THE CONTRACTOR.

KEYED MAP SCALE: 1" = 300'

PLANT LEGEND - EXISTING
(MATCHES "AS-BUILTS" LOCATIONS)

NOTE: PLANT SYMBOLS SHOWN ON PLAN ARE 75% OF MATURE SIZE FOR CLARITY OF ILLUSTRATION.

OVERALL SITE QTY EXISTING	SYMBOL	SCIENTIFIC NAME COMMON NAME
TREES		
12		EXISTING TREE - COA RECENT INSTALL
0		ABIES CONCOLOR WHITE FIR
7		ACER NEGUNDO BOX ELDER MAPLE
1		CELTIS OCCIDENTALIS HACKBERRY
10		CHILOPSIS LINEARIS DESERT WILLOW
19		ELEAGNUS ANGUSTIFOLIA RUSSIAN OLIVE
5		FRAXINUS AMERICANA WHITE ASH
19		GLEDTISIA TRICANTHOS HONEY LOCUST
7		MALUS FLORIBUNDA BETCHEL CRABAPPLE
39		PINUS NIGRA AUSTRIAN PINE
29		POPULUS DELTOIDUS COTTONWOOD
4		PYRUS CALLERYANA BRADFORD PEAR
7		QUERCUS GENUS OAK
3		ROBINIA AMBIGUA RED LOCUST
12		ROBINIA PSEUDOACACIA BLACK LOCUST
13		SAPHORA JAPONICA JAPANESE PAGODA
40		ULMUS AMERICANA AMERICAN ELM
2		VITEX ANGUS CASTUS CHASTE TREE
SHRUBS		
22		ARTEMISIA TRIDENTATA SAGE BRUSH
11		JUNIPERUS MONOSPERMA SINGLE SEED JUNIPER
4		RHUS COPALLINA DWARF SUMAC

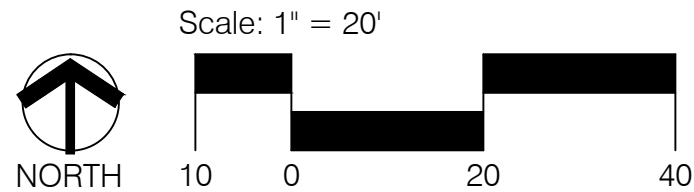
GENERAL LANDSCAPE NOTES

1. PRIOR TO BEGINNING WORK ON THE PROJECT, THE LANDSCAPE CONTRACTOR SHALL REVIEW THE PROJECT IN THE FIELD WITH THE OWNER'S REPRESENTATIVE.
2. IF DISCREPANCIES OCCUR BETWEEN THE DRAWINGS AND THE SITE, THE LANDSCAPE CONTRACTOR SHALL NOTIFY THE OWNER'S REPRESENTATIVE FOR CLARIFICATION PRIOR TO PROCEEDING ON THAT PORTION OF WORK.
3. ALL PLANTING AREAS ARE TO HAVE WEEDS AND COMPETITIVE VEGETATION REMOVED PRIOR TO PREPARATION FOR PLANTING.
4. ALL EXISTING PLANT MATERIALS SHALL BE PROTECTED DURING CONSTRUCTION. DAMAGED MATERIALS SHALL BE REPLACED IN KIND AT THE CONTRACTOR'S EXPENSE.
5. PLANT QUANTITIES ARE PROVIDED FOR CONTRACTOR'S CONVENIENCE ONLY, PLANS SHALL TAKE PRECEDENCE.
6. THE OWNER'S REPRESENTATIVE SHALL APPROVE ALL PLANT MATERIAL PRIOR TO PLANTING. IN ADDITION, THE OWNER'S REPRESENTATIVE RESERVES THE RIGHT TO REFUSE ANY PLANT MATERIAL DEEMED UNACCEPTABLE. THE OWNER'S REPRESENTATIVE IS TO APPROVE ANY AND ALL SUBSTITUTIONS.
7. IT IS THE LANDSCAPE CONTRACTOR'S RESPONSIBILITY TO LOCATE ALL UNDERGROUND UTILITIES PRIOR TO COMMENCEMENT OF PLANTING OPERATIONS.
8. ALL INSTALLATION, INCLUDING PLANTING, SHALL BE IN ACCORDANCE WITH ALL CITY OF ALBUQUERQUE STANDARD SPECIFICATIONS AND DETAILS UNLESS OTHERWISE NOTED.
9. COA PARK MAINTENANCE WILL TRIM TREES FOR SAFETY, AS NEEDED, ON SITE.
10. ALL PVIOUS AREAS SHALL BE TOP DRESSED WITH 2" LAYER OF GRAY CRUSHER FINES UNLESS OTHERWISE NOTED.
11. BOULDERS INSTALLED ALONG ROAD/PATH MUST PROVIDE AT LEAST A 3' BUFFER TO THE ROAD/PATH.

PLANT LEGEND - NEW PLANTINGS

MAIN ENTRY QTY	ADD'L	SYMBOL	SCIENTIFIC NAME COMMON NAME	SIZE	INSTALLED SIZE MATURE SIZE	WATER USE
TREES						
3	0		ABIES CONCOLOR WHITE FIR	B&B	8' MIN. HT. 50' HT. X 20' SPR.	HIGH
6	0		ACER NEGUNDO BOX ELDER MAPLE	2.5"-CAL.	14' HT. X 8' SPR. 40' HT. X 30' SPR.	MEDIUM
3	45		CHILOPSIS LINEARIS DESERT WILLOW	15-GAL.	12' HT. X 6' SPR. 20' HT. X 25' SPR.	LOW +
3	0		PINUS STROBIFORMIS SOUTHERN WHITE PINE	B&B	8' MIN. HT. 35' HT. X 25' SPR.	MEDIUM
3	0		ULMUS PARVIFLORA LACEBARK ELM	2.5"-CAL.	12' HT. X 6' SPR. 30' HT. X 30' SPR.	LOW +
SHRUBS						
37	0		ARTEMISIA TRIDENTATA BIG SAGE BRUSH	5-GAL.	4' HT. X 4' SPR.	LOW +
3	44		ATRIPLEX CANESCENS FOURWING SALT BUSH	5-GAL.	6' HT. X 8' SPR.	LOW
0	42		BUDDLEIA DAVIDII 'NANHOENSIS' BUTTERFLY BUSH	5-GAL.	5' HT. X 5' SPR.	MEDIUM
8	56		CHRYSETHAMNUS NAUSEOSUS CHAMISA	5-GAL.	5' HT. X 5' SPR.	LOW
15	61		FALLUGIA PARADOXA APACHE PLUME	5-GAL.	4' HT. X 4' SPR.	LOW
7	0		JUNIPERUS MONOSPERMA SINGLE SEED JUNIPER	15-GAL.	8'-10' MIN. HT. 12' HT. X 12' SPR.	LOW +
0	30		LAVANDULA ANGUSTIFOLIA ENGLISH LAVENDER	5-GAL.	3' HT. X 3' SPR.	MEDIUM
11	70		NOLINA TEXANA BEARGRASS	5-GAL.	4' HT. X 5' SPR.	LOW +
14	57		PSOROTHAMNUS SCOPARIUS BROOM DALEA	5-GAL.	4' HT. X 4' SPR.	LOW
19	0		RHUS TRILOBATA THREE-LEAF SUMAC	5-GAL.	4' HT. X 4' SPR.	LOW +
13	0		ROSA WOODSII WOOD'S ROSE	5-GAL.	6' HT. X 8' SPR.	MEDIUM
0	43		ROSMARINUS OFFICINALIS UPRIGHT ROSEMARY	5-GAL.	6' HT. X 6' SPR.	LOW +
21	0		SALVIA LAVANDULIFOLIA LAVENDER SAGE	1-GAL.	2' HT. X 2' SPR.	MEDIUM
17	0		TEUCRIUM CHAMAEDRYS TRAILING GERMANDER	1-GAL.	1' HT. X 2' SPR.	MEDIUM

12,340 SF		GRAY CRUSHER FINES (WITHIN MAIN ENTRY AREA). 2" DEPTH WITHOUT WEED BARRIER.
80		MOSS ROCK BOULDERS, 3' X 3' (MIN.)
3		MOSS ROCK BOULDERS, 6' HT. X 5' SPR. (MIN.)
1,000 SF		ENGINEERED WOOD FIBER (ZEAGER WOOD CARPET OR APPROVED EQUAL) AT 12" DEPTH



CITY OF ALBUQUERQUE
PARKS AND RECREATION DEPARTMENT
STRATEGIC PLANNING AND DESIGN DIVISION

TITLE: TOM BOLACK URBAN FOREST PARK
PLANTING PLAN

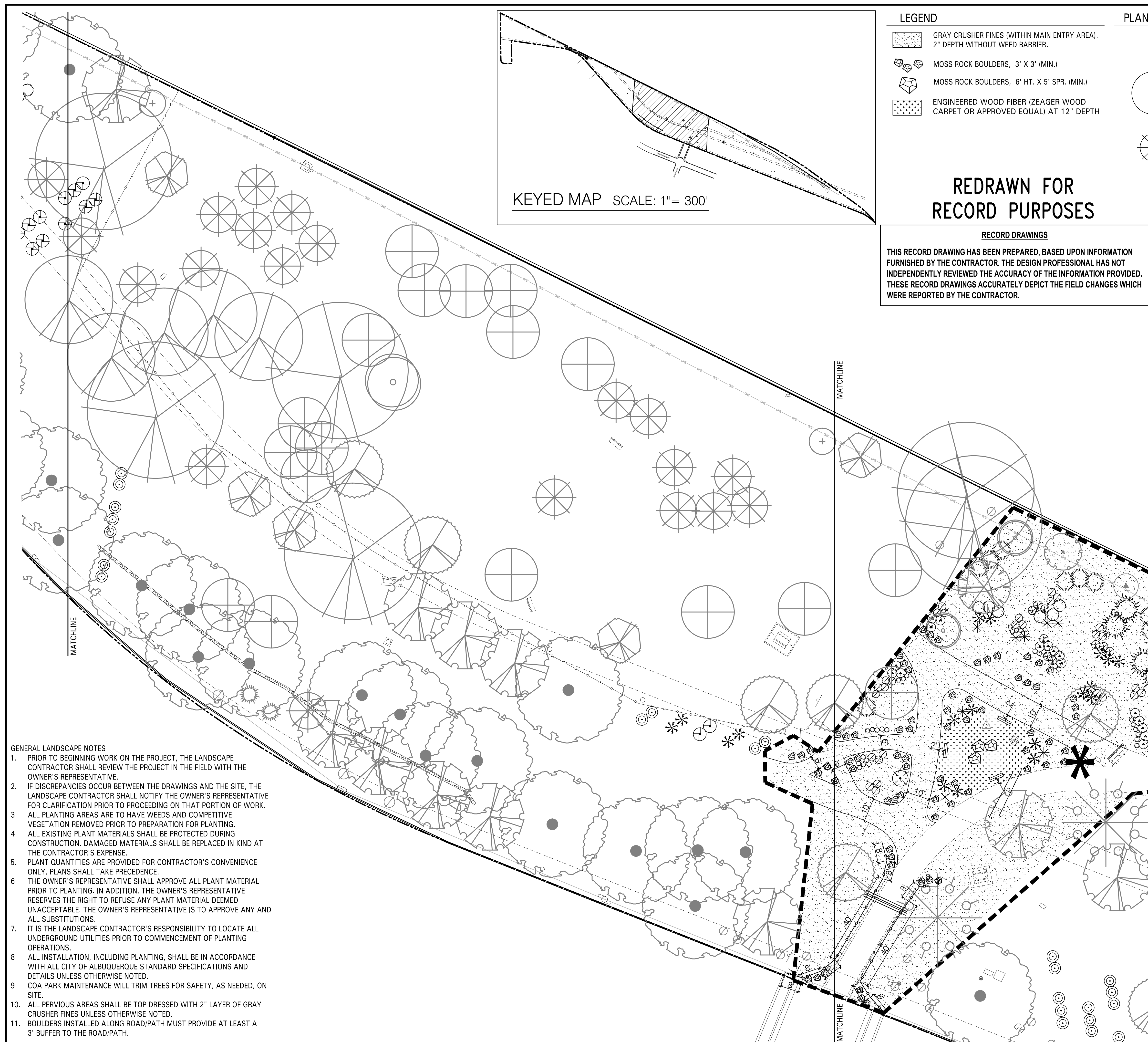
Design Review Committee	City Engineer Approval	Last Design Update	Mo. / Day / Yr.		Mo. / Day / Yr.		
City Project No.		783711	Zone Map No. J-18	Sheet	9	Of	12

FINAL FOR CONSTRUCTION

TOM BOLACK URBAN FOREST PARK

PROJECT #783711
SEPTEMBER 2013

RECORD DRAWINGS
DECEMBER 2014



PLANT LEGEND - NEW PLANTINGS		(SEE SHEET 5 FOR EXISTING PLANTS LEGEND)		
SYMBOL	SCIENTIFIC NAME	SIZE	INSTALLED SIZE	WATER USE
TREES	COMMON NAME		MATURE SIZE	
	ABIES CONCOLOR		8' MIN. HT.	
	WHITE FIR	B&B	50' HT. X 20' SPR.	HIGH
	ACER NEGUNDO		14' HT. X 8' SPR.	
	BOX ELDER MAPLE	2"-CAL.	40' HT. X 30' SPR.	MEDIUM
	CHILOPSIS LINEARIS		12' HT. X 6' SPR.	
	DESERT WILLOW	15-GAL.	20' HT. X 25' SPR.	LOW +
	PINUS STROBIFORMIS		8' MIN. HT.	
	SOUTHERN WHITE PINE	B&B	35' HT. X 25' SPR.	MEDIUM
	ULMUS PARVIFLORA		12' HT. X 6' SPR.	
	LACEBARK ELM	2"-CAL.	30' HT. X 30' SPR.	LOW +
SHRUBS				
	ARTEMISIA TRIDENTATA		4' HT. X 4' SPR.	
	BIG SAGE BRUSH	5-GAL.	4' HT. X 4' SPR.	LOW +
	ATRIPLEX CANESCENS		6' HT. X 8' SPR.	
	FOURWING SALTBU	5-GAL.	6' HT. X 8' SPR.	LOW
	BUDDLEIA DAVIDII 'NANHOENSIS'	5-GAL.	5' HT. X 5' SPR.	MEDIUM
	CHRYSOTHAMNUS NAUSEOSUS		5' HT. X 5' SPR.	
	CHAMISA	5-GAL.	5' HT. X 5' SPR.	LOW
	FALLUGIA PARADOXA		4' HT. X 4' SPR.	
	APACHE PLUME	5-GAL.	4' HT. X 4' SPR.	LOW
	JUNIPERUS MONOSPERMA		8'-10' MIN. HT.	
	SINGLE SEED JUNIPER	15-GAL.	12' HT. X 12' SPR.	LOW +
	LAVANDULA ANGUSTIFOLIA		3' HT. X 3' SPR.	
	ENGLISH LAVENDER	5-GAL.	3' HT. X 3' SPR.	MEDIUM
	NOLINA TEXANA		4' HT. X 5' SPR.	
	BEARGRASS	5-GAL.	4' HT. X 5' SPR.	LOW +
	PSORALEA ARGEMONE		4' HT. X 4' SPR.	
	BROOM DALEA	5-GAL.	4' HT. X 4' SPR.	LOW
	RHUS TRILOBATA		4' HT. X 4' SPR.	
	THREE-LEAF SUMAC	5-GAL.	4' HT. X 4' SPR.	LOW +
	ROSA WOODSII		6' HT. X 8' SPR.	
	WOOD'S ROSE	5-GAL.	6' HT. X 8' SPR.	MEDIUM
	ROSMARINUS OFFICINALIS		6' HT. X 6' SPR.	
	UPRIGHT ROSEMARY	5-GAL.	6' HT. X 6' SPR.	LOW +
	SALVIA LAVANDULIFOLIA		2' HT. X 2' SPR.	
	LAVENDER SAGE	1-GAL.	2' HT. X 2' SPR.	MEDIUM
	TEUCRIMUM CHAMAEDRYS		1' HT. X 2' SPR.	
	TRAILING GERMANDER	1-GAL.	1' HT. X 2' SPR.	MEDIUM

PLANT LEGEND - EXISTING TO REMAIN
(MATCHES "AS-BUILTS" LOCATIONS)
 SYMBOL (SEE PLANTING PLAN, SHEET 9 OF 12 FOR MORE INFO.)

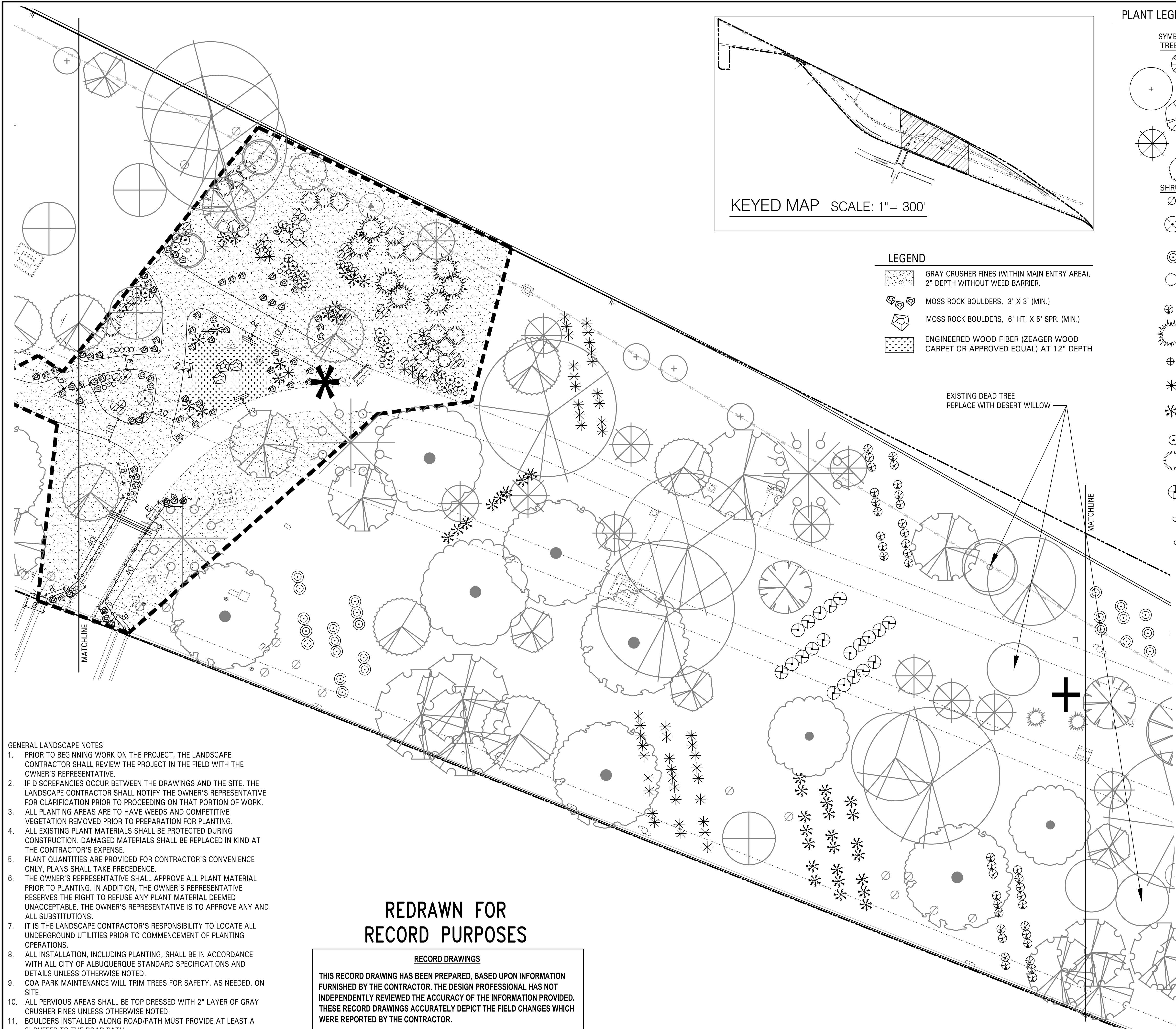
Scale: 1" = 20'

10 0 20 40

NORTH

	PLANNING INC.	CONSENSUS PLANNING, INC. Planning / Landscape Architecture 302 Eighth Street NW Albuquerque, NM 87102 (505) 764-9801 Fax 842-5495 e-mail: cp@consensusplanning.com																																																																																																																																																																																																																																																																																																																																																																																																																																																																																																																																																																																																																																																																																																																																																																																																																																																																																																																																																																																																																																																																																																																																																																																																																																																																																																																																																																													</
---	------------------	---	--	--	--	--	--	--	--	--	--	--	--	--	--	--	--	--	--	--	--	--	--	--	--	--	--	--	--	--	--	--	--	--	--	--	--	--	--	--	--	--	--	--	--	--	--	--	--	--	--	--	--	--	--	--	--	--	--	--	--	--	--	--	--	--	--	--	--	--	--	--	--	--	--	--	--	--	--	--	--	--	--	--	--	--	--	--	--	--	--	--	--	--	--	--	--	--	--	--	--	--	--	--	--	--	--	--	--	--	--	--	--	--	--	--	--	--	--	--	--	--	--	--	--	--	--	--	--	--	--	--	--	--	--	--	--	--	--	--	--	--	--	--	--	--	--	--	--	--	--	--	--	--	--	--	--	--	--	--	--	--	--	--	--	--	--	--	--	--	--	--	--	--	--	--	--	--	--	--	--	--	--	--	--	--	--	--	--	--	--	--	--	--	--	--	--	--	--	--	--	--	--	--	--	--	--	--	--	--	--	--	--	--	--	--	--	--	--	--	--	--	--	--	--	--	--	--	--	--	--	--	--	--	--	--	--	--	--	--	--	--	--	--	--	--	--	--	--	--	--	--	--	--	--	--	--	--	--	--	--	--	--	--	--	--	--	--	--	--	--	--	--	--	--	--	--	--	--	--	--	--	--	--	--	--	--	--	--	--	--	--	--	--	--	--	--	--	--	--	--	--	--	--	--	--	--	--	--	--	--	--	--	--	--	--	--	--	--	--	--	--	--	--	--	--	--	--	--	--	--	--	--	--	--	--	--	--	--	--	--	--	--	--	--	--	--	--	--	--	--	--	--	--	--	--	--	--	--	--	--	--	--	--	--	--	--	--	--	--	--	--	--	--	--	--	--	--	--	--	--	--	--	--	--	--	--	--	--	--	--	--	--	--	--	--	--	--	--	--	--	--	--	--	--	--	--	--	--	--	--	--	--	--	--	--	--	--	--	--	--	--	--	--	--	--	--	--	--	--	--	--	--	--	--	--	--	--	--	--	--	--	--	--	--	--	--	--	--	--	--	--	--	--	--	--	--	--	--	--	--	--	--	--	--	--	--	--	--	--	--	--	--	--	--	--	--	--	--	--	--	--	--	--	--	--	--	--	--	--	--	--	--	--	--	--	--	--	--	--	--	--	--	--	--	--	--	--	--	--	--	--	--	--	--	--	--	--	--	--	--	--	--	--	--	--	--	--	--	--	--	--	--	--	--	--	--	--	--	--	--	--	--	--	--	--	--	--	--	--	--	--	--	--	--	--	--	--	--	--	--	--	--	--	--	--	--	--	--	--	--	--	--	--	--	--	--	--	--	--	--	--	--	--	--	--	--	--	--	--	--	--	--	--	--	--	--	--	--	--	--	--	--	--	--	--	--	--	--	--	--	--	--	--	--	--	--	--	--	--	--	--	--	--	--	--	--	--	--	--	--	--	--	--	--	--	--	--	--	--	--	--	--	--	--	--	--	--	--	--	--	--	--	--	--	--	--	--	--	--	--	--	--	--	--	--	--	--	--	--	--	--	--	--	--	--	--	--	--	--	--	--	--	--	--	--	--	--	--	--	--	--	--	--	--	--	--	--	--	--	--	--	--	--	--	--	--	--	--	--	--	--	--	--	--	--	--	--	--	--	--	--	--	--	--	--	--	--	--	--	--	--	--	--	--	--	--	--	--	--	--	--	--	--	--	--	--	--	--	--	--	--	--	--	--	--	--	--	--	--	--	--	--	--	--	--	--	--	--	--	--	--	--	--	--	--	--	--	--	--	--	--	--	--	--	--	--	--	--	--	--	--	--	--	--	--	--	--	--	--	--	--	--	--	--	--	--	--	--	--	--	--	--	--	--	--	--	--	--	--	--	--	--	--	--	--	--	--	--	--	--	--	--	--	--	--	--	--	--	--	--	--	--	--	--	--	--	--	--	--	--	--	--	--	--	--	--	--	--	--	--	--	--	--	--	--	--	--	--	--	--	--	--	--	--	--	--	--	--	--	--	--	--	--	--	--	--	--	--	--	--	--	--	--	--	--	--	--	--	--	--	--	--	--	--	--	--	--	--	--	--	--	--	--	--	--	--	--	--	--	--	--	--	--	--	--	--	--	--	--	--	--	--	--	--	--	--	--	--	--	--	--	--	--	--	--	--	--	--	--	--	--	--	--	--	--	--	--	--	--	--	--	--	--	--	--	--	--	--	--	--	--	--	--	--	--	--	--	--	--	--	--	--	--	--	--	--	--	--	--	--	--	--	--	--	--	--	--	--	--	--	--	--	--	--	--	--	--	--	--	--	--	--	--	--	--	--	--	--	--	--	--	--	--	--	--	--	--	--	--	--	--	--	--	--	--	--	--	--	--	--	--	--	--	--	--	--	--	--	--	--	--	--	--	--	--	--	--	--	--	--	--	--	--	--	--	--	--	--	--	--	--	--	--	--	--	--	--	--	--	--	--	--	--	--	--	--	--	--	--	--	--	--	--	--	--	--	--	--	--	--	--	--	--	--	--	--	--	--	--	--	--	--	--	--	--	--	--	--	--	--	--	--	--	--	--	--	--	--	--	--	--	--	--	--	--	--	--	--	--	--	--	--	--	--	--	--	--	--	--	--	--	--	--	--	--	--	--	--	--	--	--	--	--	--	--	--	--	--	--	--	--	--	--	--	--	--	--	--	--	--	--	--	--	--	--	--	--	--	--	--	--	--	--	--	--	--	--	--	--	--	--	--	--	--	--	--	--	--	--	--	--	--	--	--	--	--	--	--	--	--	--	--	--	--	--	--	--	--	--	--	--	--	--	--	--	--	--	--	--	--	--	--	--	--	--	--	--	--	--	--	--	--	--	--	--	--	--	--	--	--	--	--	--	--	--	--	--	--	--	--	--	--	--	--	--	--	--	--	--	--	--	--	--	--	--	--	--	--	--	--	--	--	--	--	--	--	--	--	--	--	--	--	--	--	--	--	--	--	--	--	--	--	--	--	--	--	--	--	--	--	--	--	--	--	--	----

[illegible]



- GENERAL LANDSCAPE NOTES
1. PRIOR TO BEGINNING WORK ON THE PROJECT, THE LANDSCAPE CONTRACTOR SHALL REVIEW THE PROJECT IN THE FIELD WITH THE OWNER'S REPRESENTATIVE.
 2. IF DISCREPANCIES OCCUR BETWEEN THE DRAWINGS AND THE SITE, THE LANDSCAPE CONTRACTOR SHALL NOTIFY THE OWNER'S REPRESENTATIVE FOR CLARIFICATION PRIOR TO PROCEEDING ON THAT PORTION OF WORK.
 3. ALL PLANTING AREAS ARE TO HAVE WEEDS AND COMPETITIVE VEGETATION REMOVED PRIOR TO PREPARATION FOR PLANTING.
 4. ALL EXISTING PLANT MATERIALS SHALL BE PROTECTED DURING CONSTRUCTION. DAMAGED MATERIALS SHALL BE REPLACED IN KIND AT THE CONTRACTOR'S EXPENSE.
 5. PLANT QUANTITIES ARE PROVIDED FOR CONTRACTOR'S CONVENIENCE ONLY, PLANS SHALL TAKE PRECEDENCE.
 6. THE OWNER'S REPRESENTATIVE SHALL APPROVE ALL PLANT MATERIAL PRIOR TO PLANTING. IN ADDITION, THE OWNER'S REPRESENTATIVE RESERVES THE RIGHT TO REFUSE ANY PLANT MATERIAL DEEMED UNACCEPTABLE. THE OWNER'S REPRESENTATIVE IS TO APPROVE ANY AND ALL SUBSTITUTIONS.
 7. IT IS THE LANDSCAPE CONTRACTOR'S RESPONSIBILITY TO LOCATE ALL UNDERGROUND UTILITIES PRIOR TO COMMENCEMENT OF PLANTING OPERATIONS.
 8. ALL INSTALLATION, INCLUDING PLANTING, SHALL BE IN ACCORDANCE WITH ALL CITY OF ALBUQUERQUE STANDARD SPECIFICATIONS AND DETAILS UNLESS OTHERWISE NOTED.
 9. COA PARK MAINTENANCE WILL TRIM TREES FOR SAFETY, AS NEEDED, ON SITE.
 10. ALL PERVIOUS AREAS SHALL BE TOP DRESSED WITH 2" LAYER OF GRAY CRUSHER FINES UNLESS OTHERWISE NOTED.
 11. BOULDERS INSTALLED ALONG ROAD/PATH MUST PROVIDE AT LEAST A 3' BUFFER TO THE ROAD/PATH.

REDRAWN FOR
RECORD PURPOSES

RECORD DRAWINGS

THIS RECORD DRAWING HAS BEEN PREPARED, BASED UPON INFORMATION FURNISHED BY THE CONTRACTOR. THE DESIGN PROFESSIONAL HAS NOT INDEPENDENTLY REVIEWED THE ACCURACY OF THE INFORMATION PROVIDED. THESE RECORD DRAWINGS ACCURATELY DEPICT THE FIELD CHANGES WHICH WERE REPORTED BY THE CONTRACTOR.

KEYED MAP SCALE: 1"= 300'

LEGEND

- GRAY CRUSHER FINES (WITHIN MAIN ENTRY AREA). 2" DEPTH WITHOUT WEED BARRIER.
- MOSS ROCK BOULDERS, 3' X 3' (MIN.)
- MOSS ROCK BOULDERS, 6' HT. X 5' SPR. (MIN.)
- ENGINEERED WOOD FIBER (ZEAGER WOOD CARPET OR APPROVED EQUAL) AT 12" DEPTH

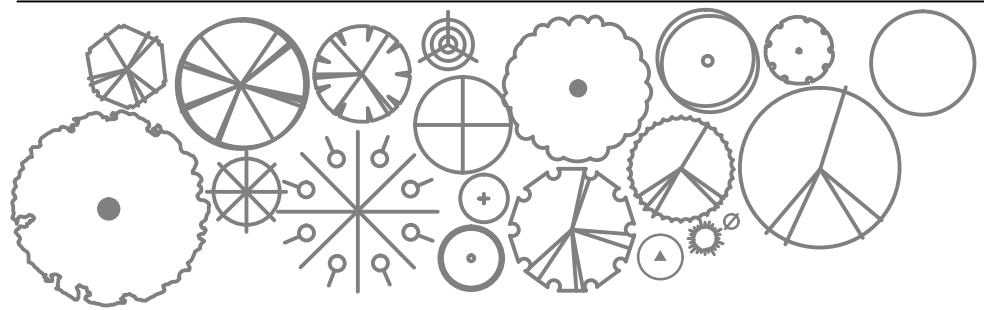
EXISTING DEAD TREE
REPLACE WITH DESERT WILLOW

PLANT LEGEND - NEW PLANTINGS (SEE SHEET 5 FOR EXISTING PLANTS LEGEND)

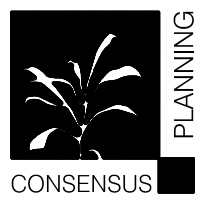
SYMBOL	SCIENTIFIC NAME	SIZE	INSTALLED SIZE	WATER USE
TREES				
ABIES CONCOLOR	8' MIN. HT.			
WHITE FIR	B&B	50' HT. X 20' SPR.	HIGH	
ACER NEGUNDO	14' HT. X 8' SPR.			
BOX ELDER MAPLE	2"-CAL.	40' HT. X 30' SPR.	MEDIUM	
CHILOPSIS LINEARIS	12' HT. X 6' SPR.			
DESERT WILLOW	15-GAL.	20' HT. X 25' SPR.	LOW +	
PINUS STROBIFORMIS	8' MIN. HT.			
SOUTHERN WHITE PINE	B&B	35' HT. X 25' SPR.	MEDIUM	
ULMUS PARVIFLORA	12' HT. X 6' SPR.			
LACEBARK ELM	2"-CAL.	30' HT. X 30' SPR.	LOW +	
SHRUBS				
ARTEMISIA TRIDENTATA	5-GAL.	4' HT. X 4' SPR.	LOW +	
BIG SAGE BRUSH				
ATRIPLEX CANESCENS	5-GAL.	6' HT. X 8' SPR.	LOW	
FOURWING SALT BUSH				
BUDDLEIA DAVIDII 'NANHOENSIS'	5-GAL.	5' HT. X 5' SPR.	MEDIUM	
BUTTERFLY BUSH				
CHRYSOTHAMNUS NAUSEOSUS	5-GAL.	5' HT. X 5' SPR.	LOW	
CHAMISA				
FALLUGIA PARADOXA	5-GAL.	4' HT. X 4' SPR.	LOW	
APACHE PLUME				
JUNIPERUS MONOSPERMA	15-GAL.	8'-10' MIN. HT.	LOW +	
SINGLE SEED JUNIPER		12' HT. X 12' SPR.		
LAVANDULA ANGUSTIFOLIA	5-GAL.	3' HT. X 3' SPR.	MEDIUM	
ENGLISH LAVENDER				
NOLINA TEXANA	5-GAL.	4' HT. X 5' SPR.	LOW +	
BEARGRASS				
PSOROTHAMNUS SCOPARIUS	5-GAL.	4' HT. X 4' SPR.	LOW	
BROOM DALEA				
RHUS TRILOBATA	5-GAL.	4' HT. X 4' SPR.	LOW +	
THREE-LEAF SUMAC				
ROSA WOODSII	5-GAL.	6' HT. X 8' SPR.	MEDIUM	
WOOD'S ROSE				
ROSMARINUS OFFICINALIS	5-GAL.	6' HT. X 6' SPR.	LOW +	
UPRIGHT ROSEMARY				
SALVIA LAVANDULIFOLIA	1-GAL.	2' HT. X 2' SPR.	MEDIUM	
LAVENDER SAGE				
TEUCRIUM CHAMAEDRYS	1-GAL.	1' HT. X 2' SPR.	MEDIUM	
TRAILING GERMANDER				

PLANT LEGEND - EXISTING TO REMAIN (MATCHES "AS-BUILTS" LOCATIONS)

SYMBOL (SEE PLANTING PLAN, SHEET 9 OF 12 FOR MORE INFO.)



Scale: 1" = 20'



CONSENSUS PLANNING, INC.
Planning / Landscape Architecture
302 Eighth Street NW
Albuquerque, NM 87102
(505) 764-9801 Fax 842-5495
e-mail: cp@consensusplanning.com

CITY OF ALBUQUERQUE
PARKS AND RECREATION DEPARTMENT
STRATEGIC PLANNING AND DESIGN DIVISION

TITLE: TOM BOLACK URBAN FOREST PARK
PLANTING PLAN

Design Review Committee

City Engineer Approval

Last Design Update

City Project No. 783711

Zone Map No. J-18

Sheet 11 of 12

AS BUILT INFORMATION			
CONTRACTOR	DATE	DATE	DATE
WORK STARTED BY	DATE	DATE	DATE
FIELD ACCEPTANCE BY	DATE	DATE	DATE
FIELD CORRECTION BY	DATE	DATE	DATE
DRAWINGS CORRECTED BY	DATE	DATE	DATE
MICRO-FILM INFORMATION			
RECORDED BY	DATE	DATE	DATE
NO.			

BENCH MARKS

SURVEY INFORMATION

FIELD NOTES	DATE
NO.	BY

ENGINEERS SEAL

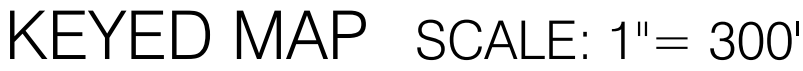
REVISIONS	BY
NO.	DATE
DESIGNED BY	DATE
DRAWN BY	DATE
CHECKED BY	DATE

FINAL FOR CONSTRUCTION

TOM BOLACK URBAN FOREST PARK

PROJECT #783711
SEPTEMBER 2013

RECORD DRAWINGS
DECEMBER 2014



PLANT LEGEND - EXISTING TO REMAIN
(MATCHES "AS-BUILTS" LOCATIONS)
 SYMBOL (SEE SHEET 9 FOR MORE INFO.)

Scale: 1" = 20'

NORTH

10 0 20 40

 **PLANNING**
CONSENSUS

CONSENSUS PLANNING, INC.
Planning / Landscape Architecture
302 Eighth Street NW
Albuquerque, NM 87102
(505) 764-9801 Fax 842-5495
e-mail: cp@consensusplanning.com

CITY OF ALBUQUERQUE
PARKS AND RECREATION DEPARTMENT
STRATEGIC PLANNING AND DESIGN DIVISION

TITLE: TOM BOLACK URBAN FOREST PARK
PLANTING PLAN & DETAIL

Design Review Committee	City Engineer Approval	Last Design Update	Mo. / Day / Yr.	Mo. / Day / Yr.
City Project No.	783711	Zone Map No. J-18	Sheet 12	Of 12

PROJECT #783711
SEPTEMBER 2013

RECORD DRAWINGS
DECEMBER 2014

FINAL FOR CONSTRUCTION