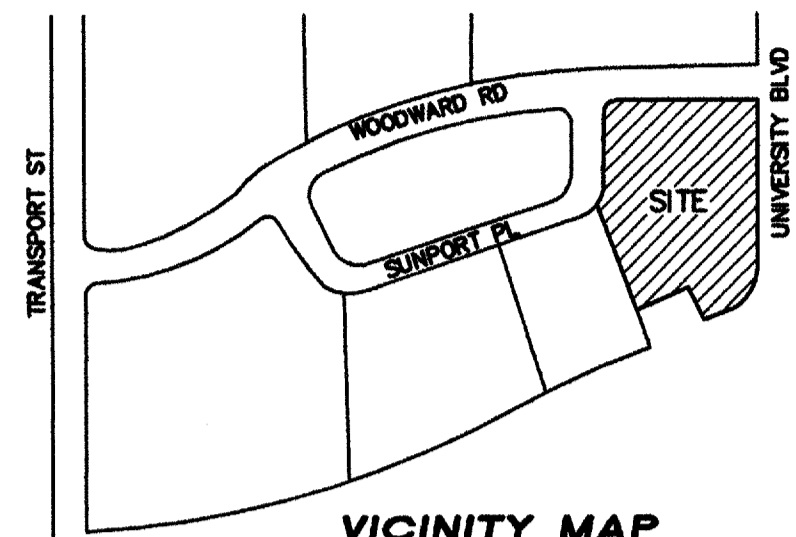


187287

SCANNED BY
PLANNING

26-78371-811-071

CITY OF ALBUQUERQUE
3" WATER SERVICE AND VAULT
8" FIRE SPRINKLER TAP



VICINITY MAP
ZONE ATLAS PAGE M-15-Z

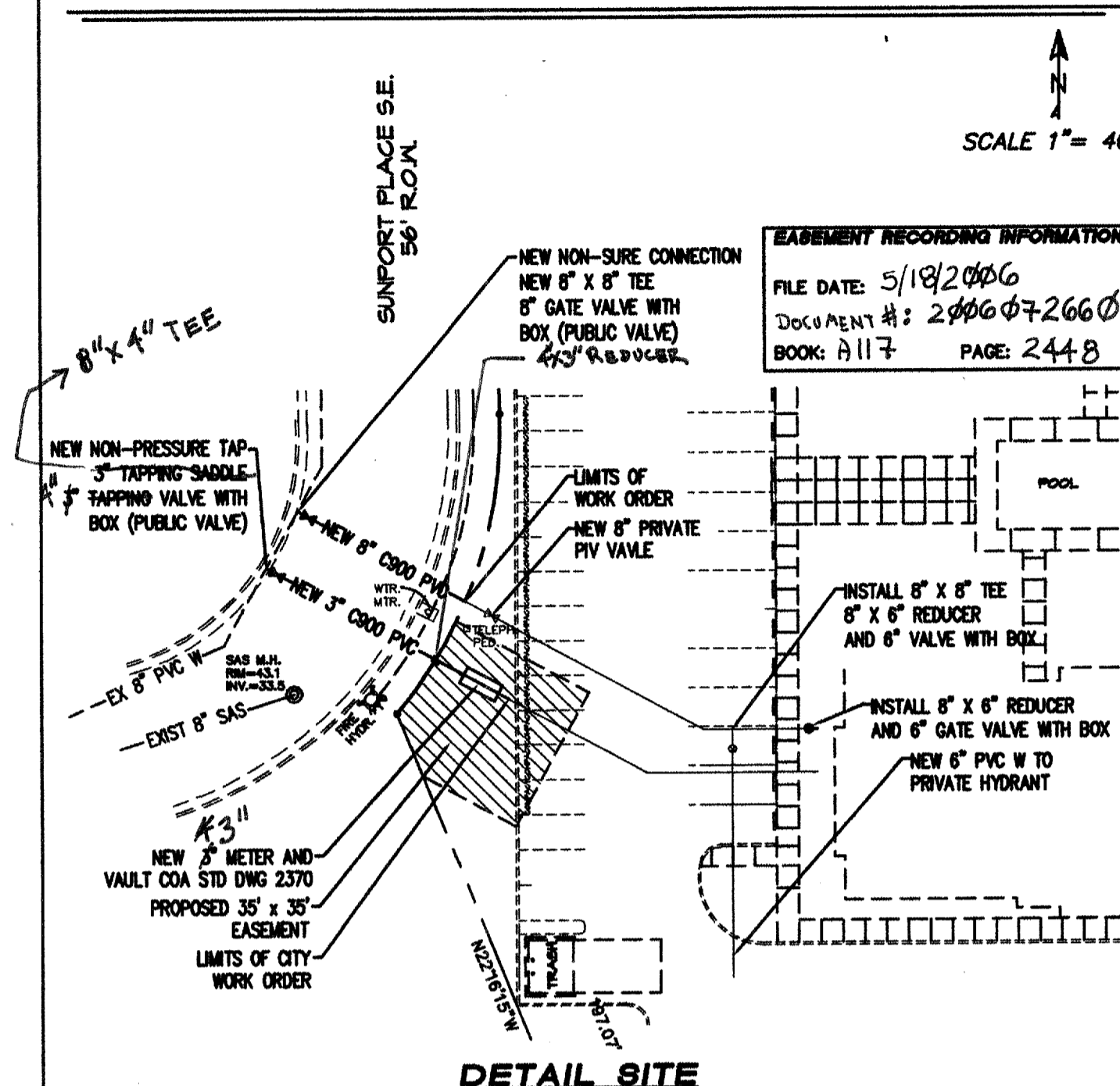
LEGAL DESCRIPTION OF PROPERTY AND ADDRESS:
LOT 1-A, BLOCK 4-B OF SUNPORT PARK, BERNALILLO COUNTY, NEW MEXICO
1520 SUNPORT PLACE SE

NOTICE TO CONTRACTORS

1. An excavation/barricade permit will be required before beginning any work within City, County, or Village right-of-way. An approved copy of these plans must be submitted at the time of application for these permits.
2. All work detailed on these plans to be done, except as otherwise stated or provided herein, will be constructed in accordance with "City of Albuquerque Interim Standard Specification for Public Works Construction, 1986," latest revision.
3. Two working days prior to any excavation, the contractor must contact Line Locating Service, 260-1990, for location of existing utilities.
4. Prior to construction, the contractor will excavate and verify the horizontal and vertical locations of all construction. Should a conflict exist, the contractor will notify the Construction Engineer so that the conflict can be resolved with a minimum amount of delay.
5. The contractor will be responsible for coordinating the water shutoff with the Water Division seven working days prior to construction.
6. The contractor will be responsible for performing soil density tests as required by the City of Albuquerque.

APPROVALS FOR	NAME	DATE	TITLE OF PROJECT:
DESIGN: UTILITY DEVELOPMENT	William G. Balch	4/18/06	HOMEWOOD SUITES 1520 SUNPORT PLACE SE FIRE LINE TAP
CONSTRUCTION: ENGINEER	B. J. [Signature]	1/29/2009	
ACCEPTANCE: CONSTRUCTION INSPECTOR	Orlando [Signature]	1-19-07	PROJECT NO. 783781 SHEET 1 OF 5 ZONE ATLAS M-15-Z

CITY OF ALBUQUERQUE
3" WATER SERVICE AND VAULT
8" FIRE SPRINKLER TAP



PROJECT NO. 783781 SHEET 2 OF 5	ZONE ATLAS M-15-Z	TITLE: HOMEWOOD SUITES 1520 SUNPORT PLACE SE
------------------------------------	----------------------	--

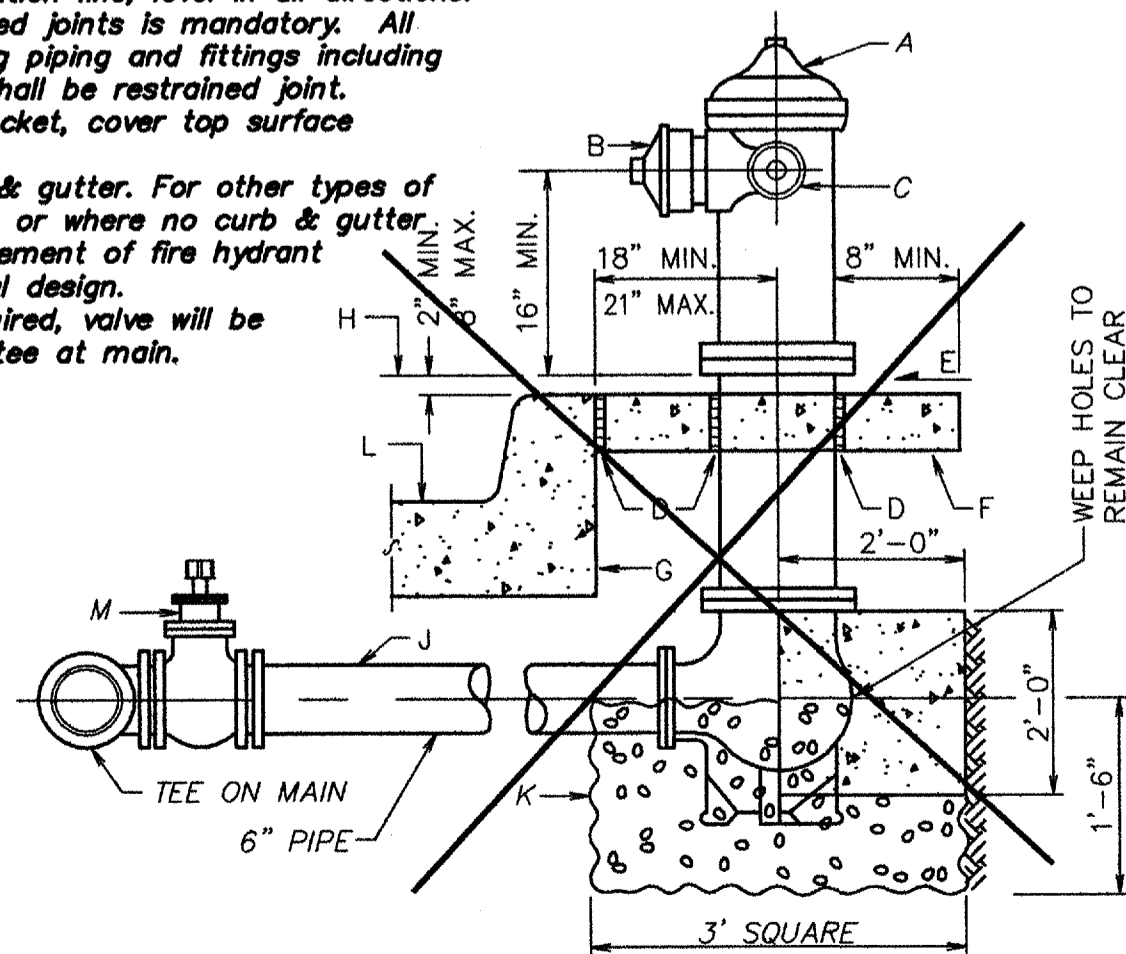
CITY OF ALBUQUERQUE
3" WATER SERVICE AND VAULT
8" FIRE SPRINKLER TAP
STANDARD DRAWING 2340-A

GENERAL NOTES

1. No obstruction will be permitted within 3'-0" of fire hydrant.
2. Hydrant leg shall be valved from mains 10" diameter and larger and in arterial streets located in commercial areas.
3. Contractor shall be responsible for setting top flange of fire hydrant to the dimensions shown.
4. For fire hydrant locations, see dwg. 2347-A.
5. When new or existing sidewalk abuts curb, reconstruct sidewalk per dwg. 2430, 2431.
6. Pumper nozzle to be set facing the traveled way, unless otherwise noted on plans.

CONSTRUCTION NOTES

- A. Fire hydrant per specifications
- B. Pumper nozzle 4 1/2"
- C. Hose nozzle 2 1/2"
- D. 1/2" expansion joint material
- E. Slope 1/4" per foot
- F. 3' x 3' x 6" concrete square pad, to be constructed around fire hydrant's centerline
- G. when not located within sidewalk or concrete area.
- H. Back of curb
- I. Controlled elevation line, level in all directions.
- J. Use of restrained joints is mandatory. All fire hydrant leg piping and fittings including tee on main shall be restrained joint.
- K. Gravel drain pocket, cover top surface with tar paper.
- L. Standard curb & gutter. For other types of curb & gutter, or where no curb & gutter exist, the placement of fire hydrant requires special design.
- M. If valve is required, valve will be connected to tee at main.



DETAIL OF FIRE HYDRANT SETTING WITH BLOCKING

PROJECT NO. 783781 SHEET 3 OF 5	ZONE ATLAS M-15-Z	TITLE: HOMEWOOD SUITES 1520 SUNPORT PLACE SE
------------------------------------	----------------------	--

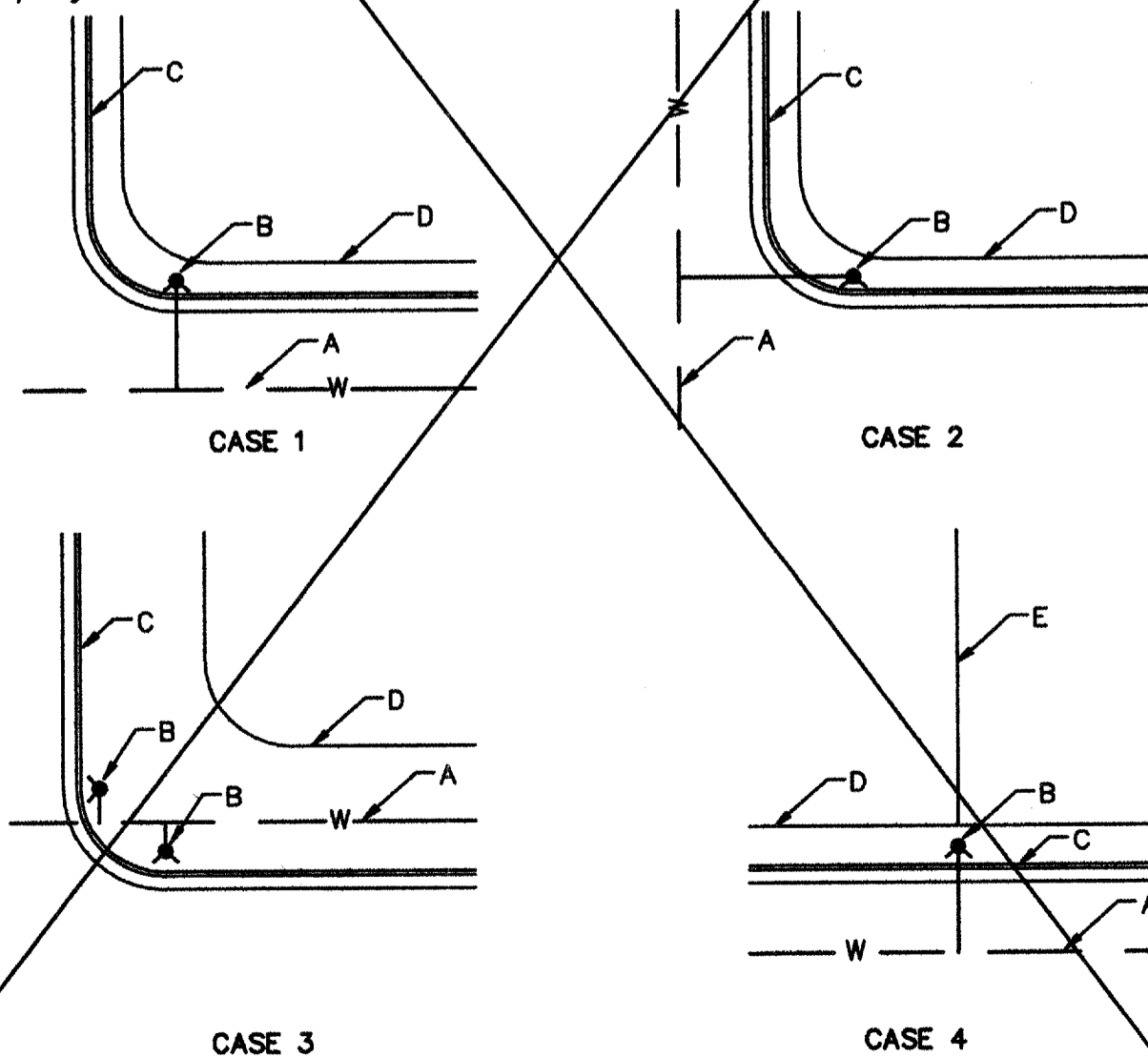
CITY OF ALBUQUERQUE
3" WATER SERVICE AND VAULT
8" FIRE SPRINKLER TAP
STANDARD DRAWING 2347-A

GENERAL NOTES

1. Normally, fire hydrants are located at end of curb return; hydrants will not be located within the curb return area. Fire hydrants to be located within the block length will be installed at a property line (Case 4).
2. A minimum clearance of 3'-0" will be provided between a fire hydrant and a permanent obstruction (utility pole, light standard, traffic signal, etc.).
3. For installation of fire hydrant, see dwg. 2340-A.
4. See dwg. 2431 for sidewalk configuration when fire hydrant is located in sidewalk.

CONSTRUCTION NOTES

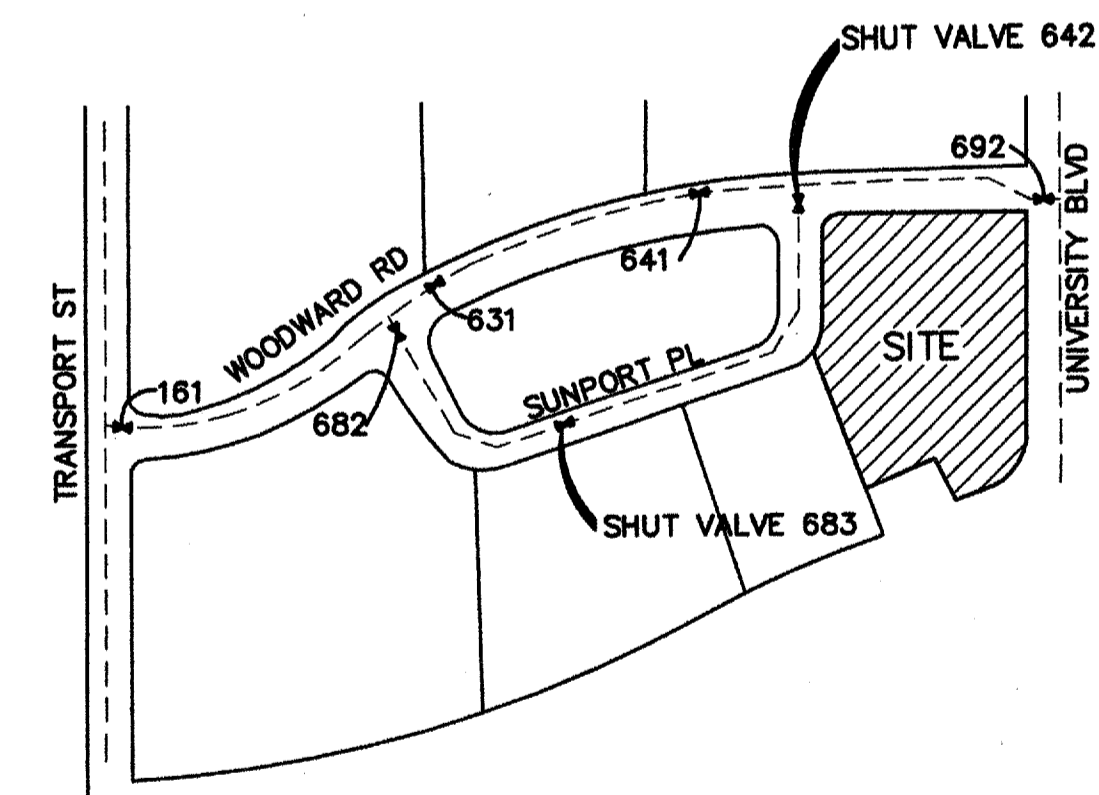
- A. Water main
- B. Fire hydrant
- C. Curb and gutter
- D. Right-of-way line
- E. Property line



TYPICAL LOCATIONS

PROJECT NO. 783781 SHEET 4 OF 5	ZONE ATLAS M-15-Z	TITLE: HOMEWOOD SUITES 1520 SUNPORT PLACE SE
------------------------------------	----------------------	--

CITY OF ALBUQUERQUE
3" WATER SERVICE AND VAULT
8" FIRE SPRINKLER TAP



WATER SHUT-OFF PLAN

- SHUT OFF PLAN NOTES:
1. CONTACT WATER SYSTEMS (857-8200) AT LEAST 7 WORKING DAYS IN ADVANCE OF CONSTRUCTION.
 2. ONLY CITY CREWS MAY OPERATE VALVES.
 3. MUST SHUT OFF TO INSTALL TEE ON MAIN, SHUT OFF VALVES # 822, 823, 832, 842 AND 891

PROJECT NO. 783781 SHEET 5 OF 5	ZONE ATLAS M-15-Z	TITLE: HOMEWOOD SUITES 1520 SUNPORT PLACE SE
------------------------------------	----------------------	--