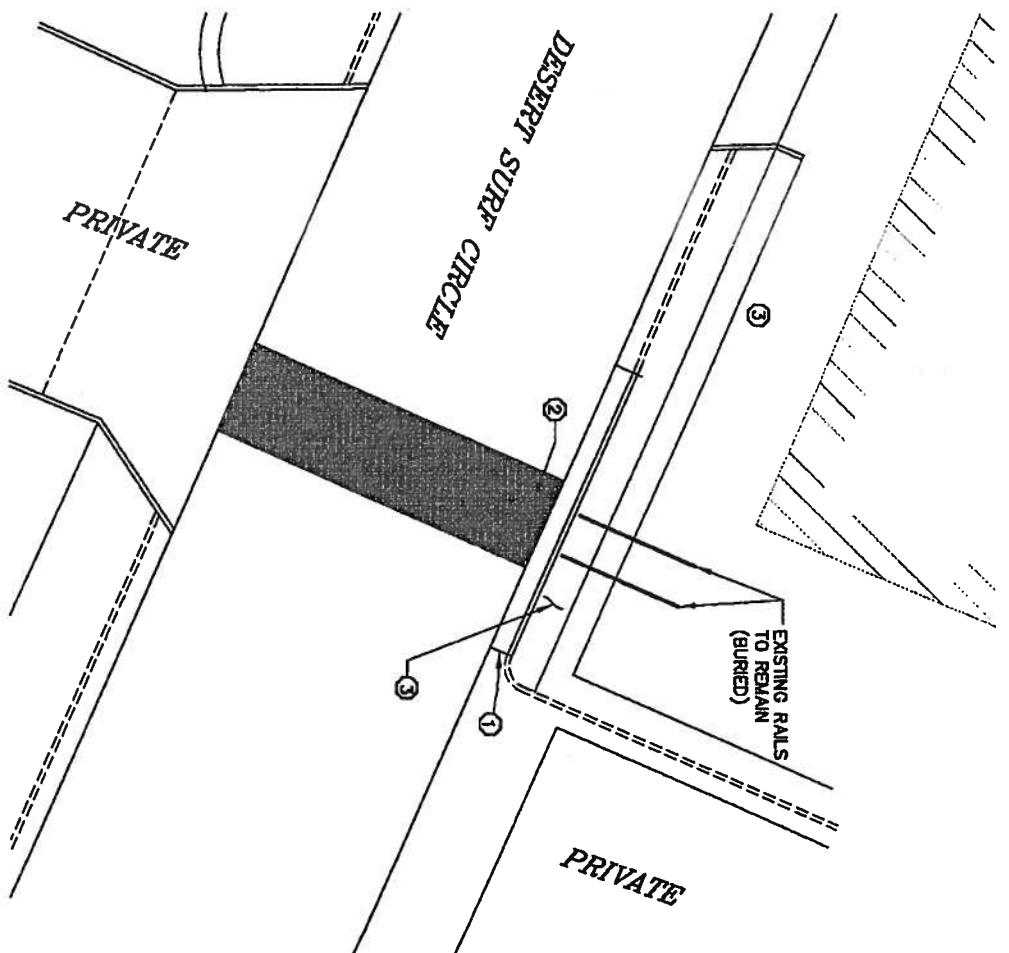
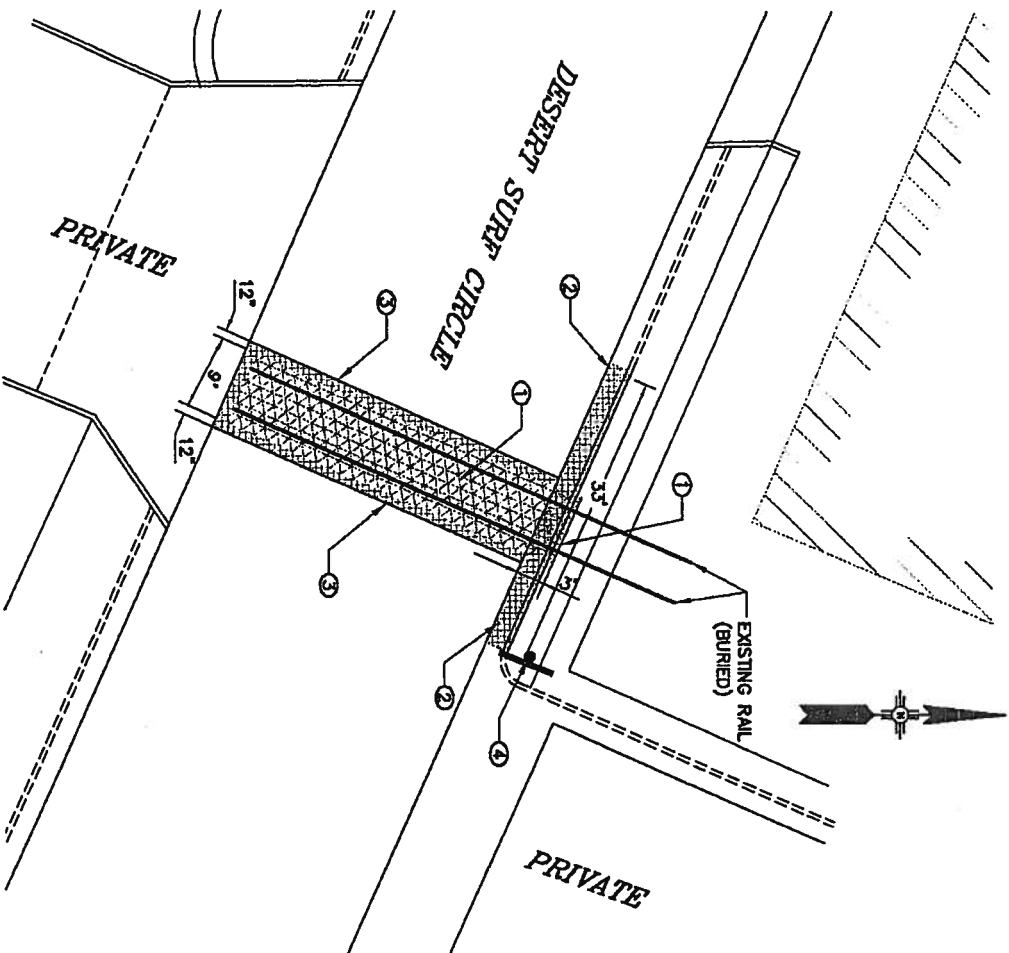


XXX,XXX REMOVE RAIL, TIE, BALLAST AND APPURTENANCES DEPTH 22" CIP		
LOCATION	QUANTITY	REMARKS
DESERT SURF CIRCLE	302 SF	
343,030 EXISTING PAVEMENT, ASPHALT CONCRETE MORE THAN 4" THICK REMOVE & DISPOSE, CIP		
LOCATION	QUANTITY	REMARKS
DESERT SURF CIRCLE	9 SY	
343,080 EXISTING CURB & GUTTER, PC CONCRETE REMOVE AND DISPOSE, COMPL.		
LOCATION	QUANTITY	REMARKS
DESERT SURF CIRCLE	33 LF	
450,101 SIGN & POST, REMOVE AND SALVAGE		
LOCATION	QUANTITY	REMARKS
DESERT SURF CIRCLE	3 EA.	
301,020 SUBGRADE PREP, 12" @ 95% COMP ACTION, CIP		
LOCATION	QUANTITY	REMARKS
DESERT SURF CIRCLE	40 SY	
336,035 ARTERIAL ASPHALT CONCRETE, TYPE SP11, 2" THK, MACHINE LAYDOWN, CIP		
LOCATION	QUANTITY	REMARKS
DESERT SURF CIRCLE	40 SY	

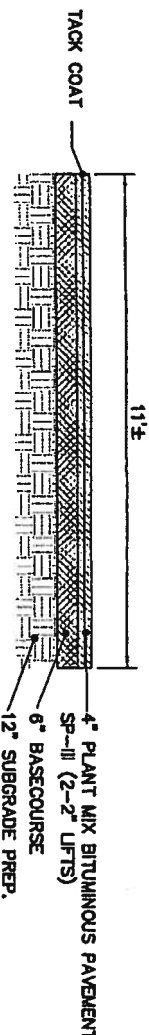
RAIL SPUR DEMOLITION

SCALE: 1"=10'



ROADWAY RECONSTRUCTION

SCALE: 1"=10'



PROPOSED ASPHALT PAVING SECTION

NTS

336,120 TACK COAT, CATIONIC EMULSIONED ASPHALT, CIP, (1" APPLICATION)		
LOCATION	QUANTITY	REMARKS
DESERT SURF CIRCLE	40 SY	
340,050 CURB & GUTTER, STANDARD, PC CONCRETE, CIP, SD 2415		
LOCATION	QUANTITY	REMARKS
DESERT SURF CIRCLE	33 LF	

NOTICE OF EXTENDED PAYMENT REMOVAL
THIS CONTRACT ALLOWING THE OWNER TO
MAKE PAYMENT WITHIN 45 DAYS AFTER
FOR PAYMENT.

GENERAL NOTES:

- RAILS REMOVED FOR THIS CROSSING
WILL BECOME THE PROPERTY OF THE
CONTRACTOR.
- ALL REMOVALS ARE APPROXIMATE.
CONTRACTOR SHALL FIELD VERIFY.
DETAILS ARE SCHEMATIC DRAWING
BASED ON AERIAL IMAGES. NO FIELD
SURVEY WAS PERFORMED FOR THIS
PROJECT.
- ALL WORK SHALL BE PERFORMED AT
NIGHT OR WEEKENDS. CONTRACTOR
SHALL COORDINATE SCHEDULE WITH
COA PROJECT MANAGER PRIOR TO
COMMENCING WORK.
- CONTRACTOR SHALL REMOVE ALL SIGN
AND BASE POSTS ASSOCIATED WITH
RAILROAD CROSSING ADVANCE
WARNING.

REMOVAL NOTES:

- REMOVE RAILS, BALLAST, TIES AND
ALL RAIL AND TIE APPURTENANCES AND
SUBSURFACE MATERIAL. REMOVAL
SHALL BEGIN 3' NORTH FROM TOP OF
EXISTING CURB TO THE TOP OF
EXISTING CURB ON THE SOUTH TO A
DEPTH OF 10".
- REMOVE EXISTING C&G FROM THE PC
OF THE EXISTING DRIVEWAY EAST OF
THE RAILROAD TRACK NORTHWESTERLY
FOR 4.33'
- NEATLY SAW CUT AND REMOVE
ASPHALT AND BASE MATERIAL TO A
DEPTH OF 10". SAWCUT SHALL BE
UNIFORM 5.5' EITHER SIDE OF RAIL
ROAD TRACK, SCARIFY AS NECESSARY
TO PERFORM 12" SUBGRADE
PREPARATION.
- REMOVE AND DISPOSE OF EXISTING RR
CROSSING SIGN AND SIGN POST.

CONSTRUCTION NOTES:

- BUILD STD. C&G PER COA STD DWG
2415. SEE DEMOLITION PLAN FOR
LENGTHS.
- INSTALL ASPHALT PER TYPICAL
PAYMENT SECTION DETAIL. SEE DETAIL
THIS SHEET. MATCH ADJOINING
PAVEMENT SLOPES AND GRADES.
- GRADE ALL EFFECTED REMOVAL AREA
TO MATCH SURROUNDING GRADES.

LEGEND:

- ASPHALT CONSTRUCTION
- REMOVAL OF EXISTING
RAILS AND CROSS TIES



CITY OF ALBUQUERQUE
MUNICIPAL DEVELOPMENT DEPARTMENT
TRANSPORTATION DEVELOPMENT DIVISION
RAILROAD CROSSING ROAD IMPROVEMENTS
DESERT SURF CIRCLE SPUR REMOVAL
Design Review Committee City Engineer Approved



SURVEY INFORMATION		
FIELD NOTES		
NO.	BY	DATE

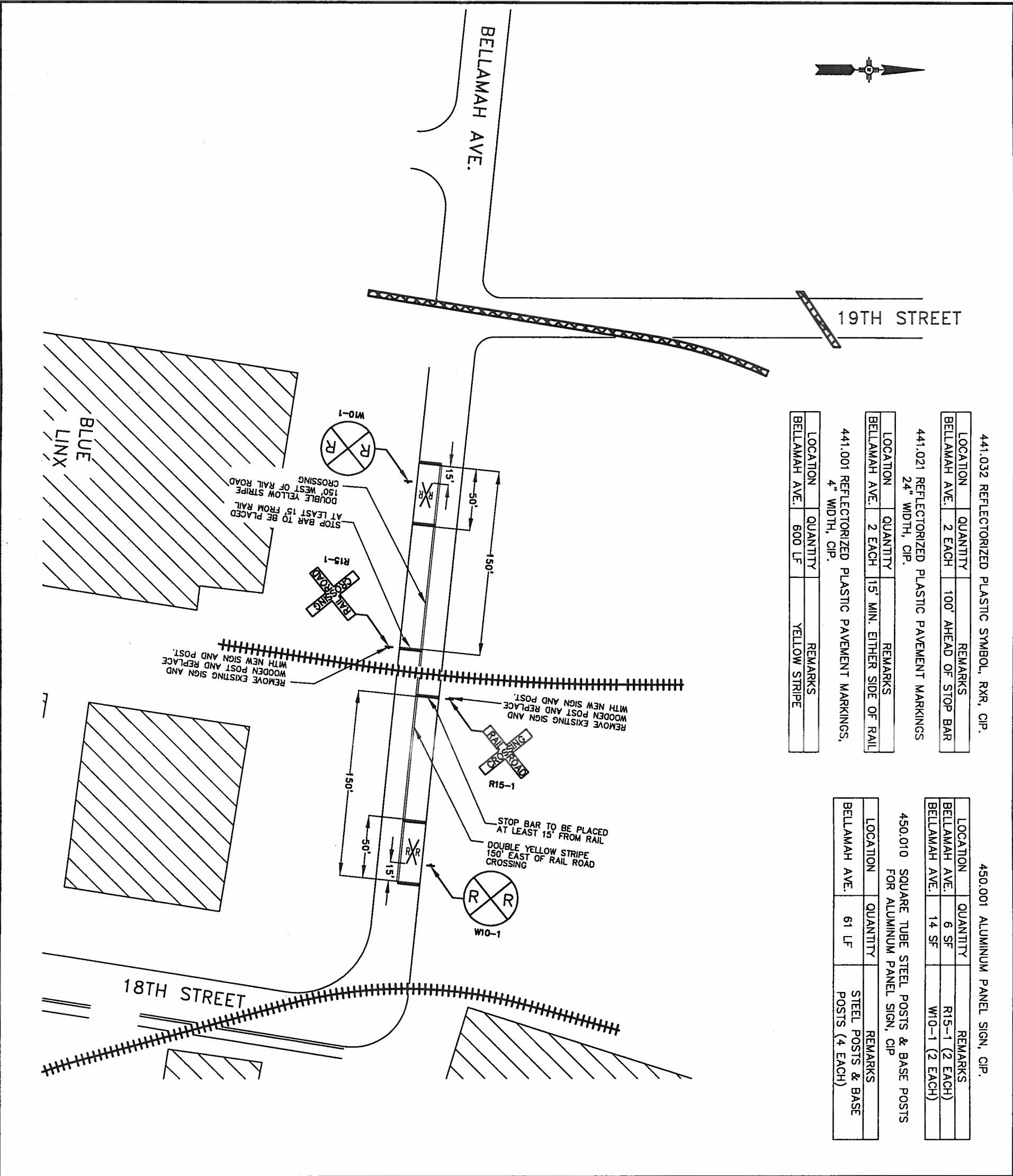
BENCH MARKS	

AS BUILT INFORMATION	
CONTRACTOR	DATE
WORK	DATE
INSPECTED BY	DATE
APPROVED BY	DATE
VERIFICATION BY	DATE
DRAWN BY	DATE
MICRO-FILM INFORMATION	
RECORDED BY	DATE
NO.	

REVISIONS	
NO.	DATE

DESIGNED BY: REL	DATE: 04/17/06
DRAWN BY: DAS	DATE: 04/17/06
CHECKED BY: RLL	DATE: 04/17/06

City Project No.	Zone Map No.	Sheet	OF
	J-13-Z	1	1



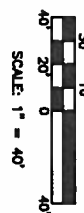
441.032 REFLECTORIZED PLASTIC SYMBOL, RXR, CIP.		
LOCATION	QUANTITY	REMARKS
BELLAMAH AVE.	2 EACH	100' AHEAD OF STOP BAR
441.021 REFLECTORIZED PLASTIC PAVEMENT MARKINGS 24" WIDTH, CIP.		
LOCATION	QUANTITY	REMARKS
BELLAMAH AVE.	2 EACH	15' MIN. EITHER SIDE OF RAIL 4" WIDTH, CIP.
441.001 REFLECTORIZED PLASTIC PAVEMENT MARKINGS, 4" WIDTH, CIP.		
LOCATION	QUANTITY	REMARKS
BELLAMAH AVE.	600 LF	YELLOW STRIPE

450.001 ALUMINUM PANEL SIGN, CIP.		
LOCATION	QUANTITY	REMARKS
BELLAMAH AVE.	6 SF	R15-1 (2 EACH)
BELLAMAH AVE.	14 SF	W10-1 (2 EACH)
450.010 SQUARE TUBE STEEL POSTS & BASE POSTS FOR ALUMINUM PANEL SIGN, CIP		
LOCATION	QUANTITY	REMARKS
BELLAMAH AVE.	61 LF	STEEL POSTS & BASE POSTS (4 EACH)

- ① INSTALL SIGNING
- ② INSTALL ADVANCED RAILROAD CROSSING STRIPING
- LEGEND
- +++ EXISTING RAILROAD TRACK
- XXX RAILROAD TRACK THAT HAS BEEN REMOVED

NOTES:

1. ALL SIGNING SHALL MEET THE REQUIREMENTS OF THE 2003 MUTCD AND SHALL USE SUPER ENGINEERING GRADE REFLECTIVE SHEETING WITH GRAFFITI RESISTENT COATING.
2. INSTALLATION OF SIGNING AND STRIPING FOR THE RAILROAD TRACK THAT WILL REMAIN IN PLACE (AT THE BLUE LINX LUMBER YARD) SHALL BE COMPLETED PRIOR TO THE REMOVAL OF THE EXISTING SIGNING AND STRIPING.



NOTICE OF EXTENDED PAYMENT PROVIDED
THE CONTRACTOR SHALL BE RESPONSIBLE TO
MAINTAIN PAYMENT WITHIN 45 DAYS AFTER
SUBMISSION OF AN UNDISPUTED REQUEST
FOR PAYMENT.

2151 LORAIN BLVD., NE
ALBUQUERQUE, NM 87110
TEL: 505.261.1000
FAX: 505.261.1000

HDR
ONE COMPANY
Many Solutions

ENGINEERING INC.

CITY OF ALBUQUERQUE
MUNICIPAL DEVELOPMENT DEPARTMENT
TRANSPORTATION DEVELOPMENT DIVISION
RAILROAD CROSSING ROAD IMPROVEMENTS
BELLAMAH AVE. / 19TH STREET
INSTALLATION OF SIGNING AND STRIPING DETAIL

Design Review Committee City Engineer Approval

City Project No. [REDACTED]

Zone Map No. J-13-Z

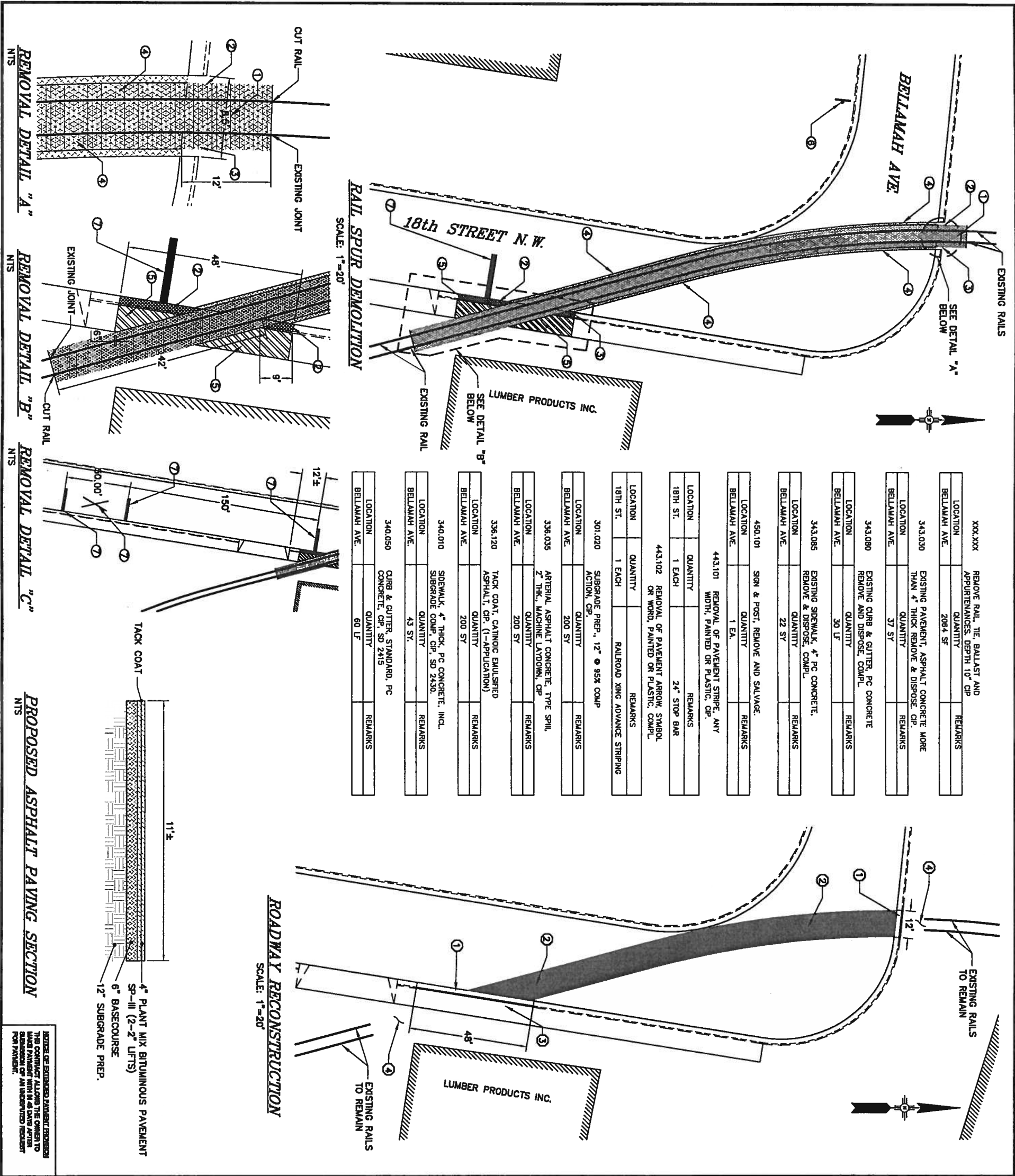
Sheet 1 of 1

Last Design Update

No. [REDACTED] / [REDACTED]

No. [REDACTED] / [REDACTED]

ENGINEER'S SEAL		SURVEY INFORMATION		BENCH MARKS	AS BUILT INFORMATION
		FIELD NOTES			CONTRACTOR DATE
		NO.	BY	DATE	WORK STAGED BY DATE
REVISIONS					INSPECTOR'S ACCEPTANCE BY DATE
		NO.	DATE	REMARKS	FIELD VERIFICATION BY DATE
DESIGNED BY: REL					DRAWINGS CORRECTED BY DATE
DATE: 04/17/06					MICRO-FILM INFORMATION
DRAWN BY: REL					RECORDED BY DATE
DATE: 04/17/06					NO.
CHECKED BY: RLL					
DATE: 04/17/06					



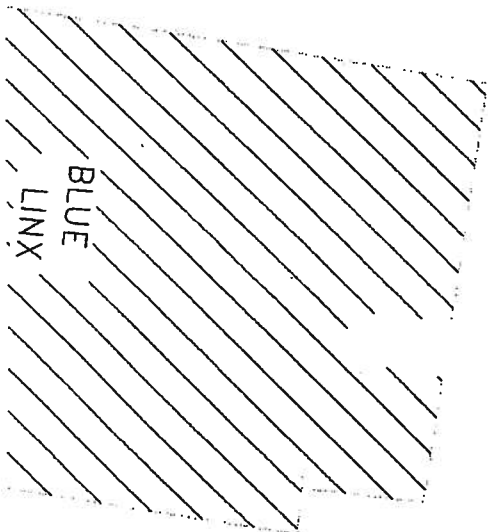
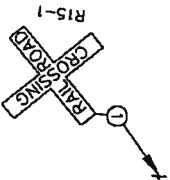
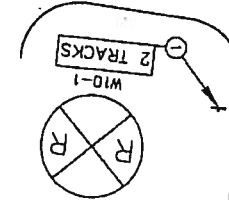
GENERAL NOTES: 1. RAILS REMOVED FROM THIS CROSSING WILL NOT BECOME THE PROPERTY OF THE CONTRACTOR. CONTRACTOR SHALL COORDINATE WITH CITY PROJECT MANAGER FOR PROPER DISPOSAL. 2. ALL REMOVALS ARE APPROXIMATE. CONTRACTOR SHALL FIELD VERIFY. 3. DETAILS ARE SCHEMATIC DRAWINGS BASED ON AERIAL IMAGES. NO FIELD SURVEY WAS PERFORMED FOR THIS PROJECT. REMOVAL NOTES: 1. REMOVE RAILS, BALLAST, TIES AND ALL RAIL AND TIE APPURTENANCES. REMOVAL SHALL BE TO A DEPTH OF 10". FROM BACK OF CURB ON BELLAMAH AVE. TO BACK OF SIDEWALK ON 18th STREET. SEE REMOVAL DETAIL "A" & "B" THIS SHEET FOR REMOVAL LIMITS. 2. REMOVE 1 CURB STONE WEST OF WEST RAIL ON BELLAMAH AVE AND SOUTH OF SOUTHERN RAIL ON 18th ST. 3. REMOVE 1 CURB STONE EAST OF EAST RAIL ON BELLAMAH AVE AND NORTH OF NORTHERN RAIL ON 18th ST. 4. NEATLY SAW CUT AND REMOVE ASPHALT AND BASE MATERIAL TO A DEPTH OF 10". SAWCUT SHALL BE UNIFORM 5.5' EITHER SIDE OF RAIL ROAD TRACK. SCARIFY AS NECESSARY TO PERFORM 12" SUBGRADE PREPARATION. 5. REMOVE AND DISPOSE OF EXISTING 8" SIDEWALK. SEE DETAILS A & B FOR DIMENSIONS THIS SHEET. 6. REMOVE AND DISPOSE OF EXISTING RAIL ROAD CROSSING SIGN AND SIGN POST. 7. REMOVE STRIPING, SEE DETAIL C FOR DIMENSIONS THIS SHEET. CONSTRUCTION NOTES: 1. BUILD STANDARD C&G PER COA STD DWG 2415. SEE DEMOLITION PLAN FOR LENGTHS. 2. INSTALL ASPHALT PER TYPICAL PAVEMENT SECTION DETAIL. SEE DETAIL THIS SHEET. MATCH ADJOINING PAVEMENT SLOPES AND GRADES. 3. INSTALL 4" x 8" CONCRETE SIDEWALK PER COA STD DWG 2430. 4. GRADE ALL AFFECTED REMOVAL AREA TO MATCH SURROUNDING GRADES. LEGEND: ASPHALT CONSTRUCTION REMOVAL OF EXISTING RAILS AND CROSS TIES REMOVAL OF EXISTING SIDEWALK & C&G		ENGINEER'S SEAL ROSS E. LUTIN NEW MEXICO 16328 LICENSED PROFESSIONAL ENGINEER		SURVEY INFORMATION FIELD NOTES NO. BY DATE		BENCH MARKS		AS BUILT INFORMATION CONTRACTOR DATE STARTED BY DATE INSPECTED BY DATE FIELD VERIFICATION BY DATE DRAWINGS CORRECTED BY DATE RECORDED BY DATE NO.	
CITY OF ALBUQUERQUE MUNICIPAL DEVELOPMENT DEPARTMENT TRANSPORTATION DEVELOPMENT DIVISION RAILROAD CROSSING ROAD IMPROVEMENTS BELLAMAH AVE & 18th ST. SPUR REMOVAL Design Review Committee City Engineer Approval		ONE COMPANY HDR HDR ENGINEERING INC. 3701 LUTHER AVE. N.E. SUITE 200 ALBUQUERQUE, NM 87110 TEL: (505) 263-5000 FAX: (505) 263-5004		DESIGNED BY: REL DRAWN BY: DAS CHECKED BY: RLL		DATE: 04/17/06 DATE: 04/17/06 DATE: 04/17/06		REVISIONS NO. DATE REMARKS BY	
City Project No. J-13-Z Zone Map No. J-13-Z Sheet 1 of 1		City Engineer Approval		City Engineer Approval		City Engineer Approval		City Engineer Approval	



BELLAMAH AVE.

20TH STREET

19TH STREET



BLUE
LINX

443.101 REMOVAL OF PAVEMENT STRIPE, ANY
WIDTH, PAINTED OR PLASTIC, C/P.

LOCATION	QUANTITY	REMARKS
19TH ST.	1 EACH	24" STOP BAR

443.102 REMOVAL OF PAVEMENT ARROW, SYMBOL
OR WORD, PAINTED OR PLASTIC, COMPL.

LOCATION	QUANTITY	REMARKS
19TH ST.	1 EACH	RAILROAD XING ADVANCE STRIPING

450.101 SIGN, POST & BASE POST, REMOVE &
SALVAGE, COMPL.

LOCATION	QUANTITY	REMARKS
BELLAMAH AVE.	1 EACH	W10-1 & "2 TRACKS"
BELLAMAH AVE.	1 EACH	R15-1

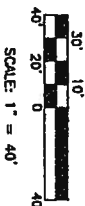
- ① REMOVE EXISTING SIGNING
② REMOVE EXISTING STRIPING

LEGEND

+++ EXISTING RAILROAD TRACK
XXX RAILROAD TRACK THAT HAS
BEEN REMOVED

NOTE:

1. INSTALLATION OF SIGNING AND
STRIPING FOR THE RAILROAD
TRACK THAT WILL REMAIN IN
PLACE (AT THE BLUE LINX
LUMBER YARD) SHALL BE
COMPLETED PRIOR TO THE
REMOVAL OF THE EXISTING
SIGNING AND STRIPING.



NOTICE OF EXTENDED PAYMENT PROVISION
THIS CONTRACT ALLOWS THE OWNER TO
HAVE PAYMENT WITHIN 60 DAYS AFTER
SUBMISSION OF AN UNDISPUTED REQUEST
FOR PAYMENT.

HDR
ONE COMPANY
Engineering Inc.
Hazy Solutions



CITY OF ALBUQUERQUE
MUNICIPAL DEVELOPMENT DEPARTMENT
TRANSPORTATION DEVELOPMENT DIVISION
RAILROAD CROSSING ROAD IMPROVEMENTS
BELLAMAH AVE. / 19TH STREET
REMOVAL OF SIGNING AND STRIPING DETAIL

Design Review Committee City Engineer Approval

City Project No.	Zone Map No.	Sheet	Of
J-13-Z		1	1

ENGINEER'S SEAL



SURVEY INFORMATION

FIELD NOTES		
NO.	BY	DATE

BENCH MARKS

AS BUILT INFORMATION	
CONTRACTOR	DATE
WORK	DATE
STAMPED BY	DATE
INSPECTOR'S	DATE
ACCEPTANCE BY	DATE
FIELD	DATE
VERIFICATION BY	DATE
DRAWINGS	DATE
CORRECTED BY	DATE
MICRO-FILM INFORMATION	
RECORDED BY	DATE
NO.	

NO.	DATE	REMARKS	BY
REVISIONS			
HDR ENGINEERING INC.			
DESIGNED BY:	REL	DATE: 04/17/06	
DRAWN BY:	REL	DATE: 04/17/06	
CHECKED BY:	RLI	DATE: 04/17/06	

7839.91