

PUBLIC IMPROVEMENT PLANS  
FOR  
**BALDRIDGE STORAGE UNITS**  
ALBUQUERQUE, NEW MEXICO

JUNE 2006

PREPARED FOR:  
JOHN PETTY & CO., INC.  
5854 OSUNA N.E.  
ALBUQUERQUE, N.M. 87109

PREPARED BY:  
ISAACSON & ARFMAN, P.A.  
128 MONROE ST. NE  
ALBUQUERQUE, NM 87108

INDEX TO DRAWINGS

SHEET NO.	TITLE
1	COVER SHEET
2	GRADING & DRAINAGE PLAN
3	PAVING PLAN & PROFILE SHEETS INDIAN SCHOOL ROAD N.E.
4	UTILITY PLAN & PROFILE SHEETS INDIAN SCHOOL ROAD N.E.

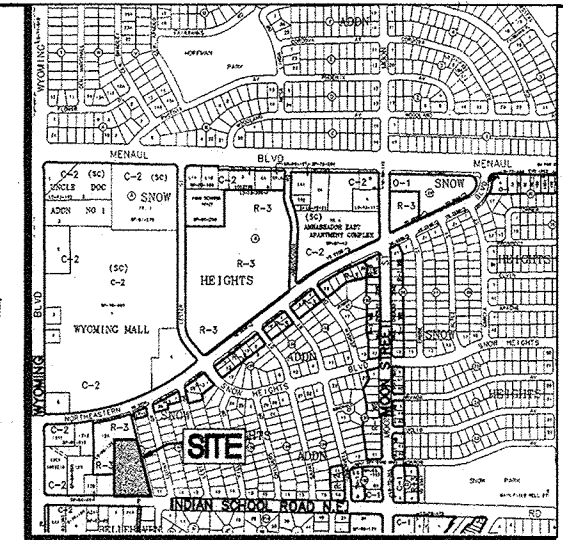
FOR INFORMATION ONLY

As-builts and Closeout package not submitted.  
Construction verified by aerial imagery.

By: Jim Roeder Date: 12-31-2019

GENERAL NOTES

- ALL WORK DETAILED ON THESE PLANS TO BE PERFORMED UNDER CONTRACT SHALL, EXCEPT AS OTHERWISE STATED OR PROVIDED FOR HEREON, BE CONSTRUCTED IN ACCORDANCE WITH THE CITY OF ALBUQUERQUE STANDARD SPECIFICATIONS FOR PUBLIC WORKS CONSTRUCTION 1986 EDITION, AS AMENDED WITH UPDATE NO. 7, INCLUDING AMENDMENT 1.
- ALL WORK ON THIS PROJECT SHALL BE PERFORMED IN ACCORDANCE WITH APPLICABLE FEDERAL, STATE, AND LOCAL LAWS, RULES, AND REGULATIONS CONCERNING CONSTRUCTION SAFETY AND HEALTH.
- PRIOR TO CONSTRUCTION, THE CONTRACTOR SHALL EXCAVATE & VERIFY THE HORIZONTAL AND VERTICAL LOCATIONS OF ALL OBSTRUCTIONS. SHOULD A CONFLICT EXIST, THE CONTRACTOR SHALL NOTIFY THE ENGINEER SO THAT THE CONFLICT CAN BE RESOLVED WITH MINIMUM DELAY.
- TWO (2) WORKING DAYS PRIOR TO ANY EXCAVATION, CONTRACTOR MUST CONTACT LINE LOCATING SERVICE, NM ONE CALL SYSTEMS, INC. @ 260-1990 FOR LOCATION OF EXISTING UTILITIES.
- CONTRACTOR SHALL CONDUCT HIS OPERATIONS IN A MANNER WHICH WILL MINIMIZE INTERFERENCE WITH LOCAL TRAFFIC. CONTRACTOR SHALL COMPLY WITH ALL APPLICABLE LAWS, ORDINANCES, RULES, REGULATIONS, AND ORDERS OF ANY PUBLIC BODY HAVING JURISDICTION FOR THE SAFETY OF PERSONS OR PROPERTY, AND TO PROTECT THEM FROM DAMAGE, INJURY, OR LOSS. CONTRACTOR SHALL ERECT AND MAINTAIN, AS REQUIRED BY THE CONDITIONS AND PROGRESS OF THE WORK, ALL NECESSARY SAFEGUARDS FOR SAFETY CONTINUOUSLY AND NOT LIMITED TO NORMAL WORKING HOURS, THROUGHOUT THE DURATION OF THE PROJECT. CONTRACTOR SHALL ADHERE TO SECTION 19 OF THE GENERAL CONDITIONS OF THE CITY OF ALBUQUERQUE STANDARD SPECIFICATIONS FOR PUBLIC WORKS CONSTRUCTION, 1986, AS AMENDED WITH UPDATE NO. 7.
- THE CONTRACTOR AGREES THAT HE SHALL ASSUME THE SOLE AND COMPLETE RESPONSIBILITY FOR THE JOB SITE CONDITIONS DURING THE COURSE OF CONSTRUCTION OF THIS PROJECT, INCLUDING SAFETY OF ALL PERSONS AND PROPERTY; THAT THIS REQUIREMENT SHALL APPLY CONTINUOUSLY AND NOT BE LIMITED TO NORMAL WORKING HOURS; AND THAT THE CONTRACTOR SHALL DEFEND, INDEMNIFY, AND HOLD HARMLESS THE OWNER & ENGINEER FROM ANY AND ALL LIABILITY REAL OR ALLEGED, IN CONNECTION WITH THE PERFORMANCE OF WORK ON THIS PROJECT, EXCEPTING LIABILITY ARISING FROM THE SOLE NEGLIGENCE OF THE OWNER OR ENGINEER.
- TRAFFIC CONTROL: FIVE (5) WORKING DAYS PRIOR TO BEGINNING CONSTRUCTION THE CONTRACTOR SHALL SUBMIT TO THE CONSTRUCTION COORDINATION DIVISION A DETAILED CONSTRUCTION SCHEDULE. TWO (2) WORKING DAYS PRIOR TO CONSTRUCTION, THE CONTRACTOR SHALL OBTAIN A BARRICADE PERMIT FROM THE CONSTRUCTION COORDINATION DIVISION. CONTRACTOR SHALL NOTIFY BARRICADE ENGINEER (924-3400) PRIOR TO OCCUPYING AN INTERSECTION. SEE SECTION 19 OF THE SPECIFICATIONS. ALL STREET STRIPING ALTERED OR DESTROYED SHALL BE REPLACED WITH PLASTIC REFLECTORIZED PAVEMENT MARKINGS BY CONTRACTOR TO LOCATION AS EXISTING OR AS SHOWN IN THIS PLAN SET.
- WHEN ABUTTING EXISTING PAVEMENT TO NEW, SAWCUT EXISTING PAVEMENT TO A STRAIGHT EDGE AND AT A RIGHT ANGLE, OR AS APPROVED BY THE FIELD ENGINEER. REMOVAL OF BROKEN OR CRACKED PAVEMENT WILL ALSO BE REQUIRED.
- EXISTING CURB AND GUTTER NOT TO BE REMOVED UNDER THE CONTRACT WHICH IS DAMAGED OR DISPLACED BY THE CONTRACTOR SHALL BE REMOVED AND REPLACED BY THE CONTRACTOR AT HIS EXPENSE.
- ALL FINAL BACKFILL FOR TRENCHES SHALL BE COMPACTED TO A MINIMUM 95% MAXIMUM DENSITY PER ASTM D-1557 AND AS DIRECTED BY SECTION 701.14.2 AND STANDARD DRAWING NUMBER 2315.
- THE CONTRACTOR SHALL PROMPTLY CLEAN UP ANY MATERIAL EXCAVATED WITHIN THE PUBLIC RIGHT-OF-WAY OR PRIVATE ROADWAY EASEMENTS SO THAT THE EXCAVATED MATERIAL IS NOT SUSCEPTIBLE TO BEING WASHED DOWN THE STREET OR INTO ANY PUBLIC DRAINAGE FACILITY.
- PROPOSED WATERLINE MATERIALS SHALL BE EITHER PVC PIPE MEETING AWWA C900 REQUIREMENTS (6"-12") OR DUCTILE IRON PIPE, THICKNESS CLASS 50 (6"-16").
- ALL SANITARY SEWER LINE STATIONING REFERS TO SANITARY SEWER CENTERLINE STATIONING.
- ALL FITTINGS ON WATERLINES SHALL HAVE RESTRAINED JOINTS AS NOTED ON THE PLANS.
- THE CONTRACTOR SHALL NOTIFY THE ENGINEER NOT LESS THAN SEVEN (7) DAYS PRIOR TO STARTING WORK IN ORDER THAT THE ENGINEER MAY TAKE NECESSARY MEASURES TO INSURE THE PRESERVATION OF SURVEY MONUMENTS. CONTRACTOR SHALL NOT DISTURB PERMANENT SURVEY MONUMENTS WITHOUT THE CONSENT OF THE ENGINEER AND SHALL NOTIFY THE ENGINEER AND BEAR THE EXPENSE OF REPLACING ANY THAT MAY BE DISTURBED WITHOUT PERMISSION. REPLACEMENT SHALL BE DONE ONLY BY THE CITY SURVEYOR. WHEN A CHANGE IS MADE IN THE FINISHED ELEVATIONS OF THE PAVEMENT OF ANY ROADWAY IN WHICH A PERMANENT SURVEY MONUMENT IS LOCATED, CONTRACTOR SHALL, AT HIS OWN EXPENSE, ADJUST THE MONUMENT COVER TO THE NEW GRADE UNLESS OTHERWISE SPECIFIED. REFER TO SECTION 4.4 OF THE GENERAL CONDITIONS OF THE STANDARD SPECIFICATIONS.
- PNM WILL PROVIDE AT NO COST TO THE CITY OR THE CONTRACTOR THE REQUIRED PERSONNEL FOR INSPECTION OR OBSERVATION DEEMED NECESSARY BY PNM WHILE THE CONTRACTOR IS EXPOSING PNM'S CABLES. HOWEVER, THE CONTRACTOR SHALL BE CHARGED THE TOTAL COST ASSOCIATED WITH REPAIRS TO ANY DAMAGED CABLES OR FOR ANY COST ASSOCIATED WITH SUPPORTING OR RELOCATING THE POLES AND CABLES DURING CONSTRUCTION.
- WARNING--EXISTING UTILITY LINE LOCATIONS ARE SHOWN IN AN APPROXIMATE MANNER ONLY, AND SUCH LINES MAY EXIST WHERE NONE ARE SHOWN. THE LOCATION OF ANY SUCH EXISTING LINES IS BASED UPON INFORMATION PROVIDED BY THE UTILITY COMPANY, THE OWNER, OR BY OTHERS, AND THE INFORMATION MAY BE INCOMPLETE OR MAY BE OBSOLETE BY THE TIME CONSTRUCTION COMMENCES. THE ENGINEER HAS UNDERTAKEN NO FIELD VERIFICATION OF THE LOCATION, DEPTH, SIZE, OR TYPE OF EXISTING UNDERGROUND UTILITY LINES, MAKES NO REPRESENTATION PERTAINING THERETO, AND ASSUMES NO RESPONSIBILITY OR LIABILITY THEREFOR. THE CONTRACTOR SHALL INFORM ITSELF OF THE LOCATION OF ANY UTILITY LINE IN OR NEAR THE AREA OF THE WORK IN ADVANCE OF AND DURING EXCAVATION WORK. THE CONTRACTOR IS FULLY RESPONSIBLE FOR ANY AND ALL DAMAGE CAUSED BY ITS FAILURE TO LOCATE, IDENTIFY, AND PRESERVE ANY AND ALL EXISTING UTILITIES. THE CONTRACTOR SHALL COMPLY WITH STATE STATUTES, MUNICIPAL AND LOCAL ORDINANCES, RULES AND REGULATIONS PERTAINING TO THE LOCATION OF THESE LINES AND FACILITIES, IN PLANNING AND CONDUCTING EXCAVATION, WHETHER BY CALLING OR NOTIFYING THE UTILITIES, COMPLYING WITH "BLUE STAKES" PROCEDURES, OR OTHERWISE.
- ANY WORK OCCURRING WITHIN A FULLY DEVELOPED ARTERIAL ROADWAY REQUIRES 24 HR. CONSTRUCTION.
- ALL EXCAVATION, TRENCHING AND SHORING ACTIVITIES MUST BE ACCOMPLISHED IN ACCORDANCE WITH OSHA 29CFR 1926.650 SUBPART P.
- CONTRACTOR SHALL MAINTAIN A GRAFFITI-FREE WORK SITE. CONTRACTOR SHALL PROMPTLY REMOVE ANY AND ALL GRAFFITI FROM EQUIPMENT, WHETHER PERMANENT OR TEMPORARY.
- THE CONTRACTOR WILL BE RESPONSIBLE FOR DISPOSING OF ALL DEBRIS, INCLUDING, NOT LIMITED TO HAZARDOUS WASTE AT DISPOSAL SITES APPROVED BY GOVERNMENTAL AGENCIES REGULATING THE DISPOSAL OF SUCH MATERIALS.
- TACK COAT FOR SURFACE COURSE REQUIREMENTS WILL BE DETERMINED BY THE ENGINEER.
- PERMANENT PAVEMENT STRIPING AND MARKINGS WILL BE PLACED BY THE CONTRACTOR. THE ROAD SHALL NOT BE OPENED TO TRAFFIC UNTIL IT IS STRIPED. ALL STRIPING, PAVEMENT MARKINGS INCLUDING CROSSWALKS, ARROWS AND LINE MARKINGS ARE TO BE CONSTRUCTED OF HOT PLASTIC OR COLD PLASTIC IN ACCORDANCE WITH THE MANUAL OF UNIFORM TRAFFIC CONTROL DEVICES.
- ELECTRONIC MARKER DISKS (EMD) WILL BE PLACED ACCORDING TO SECTION 170 OF THE CITY OF ALBUQUERQUE SPECIFICATIONS FOR PUBLIC WORKS CONSTRUCTION, 1986 EDITION AS REVISED THROUGH UPDATE #7.
- ALL WATER VALVE BOXES AND MANHOLES IN THE STREET CONSTRUCTION ARE TO BE ADJUSTED TO FINISH GRADE AND WILL BE MEASURED AND PAID PER EACH.
- CONTRACTOR SHALL SUPPORT ALL EXISTING, UNDERGROUND UTILITY LINES WHICH BECOME EXPOSED DURING CONSTRUCTION. PAYMENT FOR SUPPORTING WORK SHALL BE INCIDENTAL TO WATERLINE AND/OR SEWER LINE COSTS.
- CONTRACTOR SHALL ASSIST THE ENGINEER/INSPECTOR IN THE RECORDING OF DATA ON ALL UTILITY LINES AND ACCESSORIES AS REQUIRED BY THE CITY OF ALBUQUERQUE FOR THE PREPARATION OF RECORD DRAWINGS. CONTRACTOR SHALL NOT COVER UTILITY LINES AND ACCESSORIES UNTIL ALL DATA HAS BEEN RECORDED.
- CONTRACTOR WILL BE RESPONSIBLE FOR PROVIDING AND MAINTAINING ALL THE CONSTRUCTION SIGNING UNTIL PROJECT HAS BEEN ACCEPTED BY THE CITY.



H-20-Z

VICINITY MAP

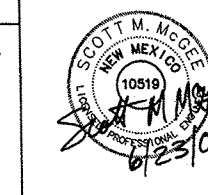
1"=750'±

DRB NO. N/A

ISAACSON & ARFMAN, P.A.  
Consulting Engineering Associates

128 Monroe Street N.E.  
Albuquerque, New Mexico 87108  
Ph. 505-268-8828 Fax. 505-268-2632

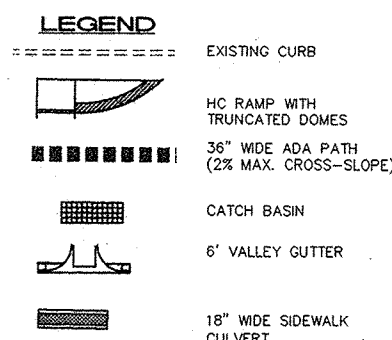
1487CVR.DWG:rh 06/23/06



REV.	SHEETS	CITY ENGINEER	DATE	USER	DEPARTMENT	DATE	USER	DEPARTMENT	DATE
ENGINEERS STAMP & SIGNATURE									
APPROVALS		ENGINEER		DATE		*****			
DRC Chairman		[Signature]		7/16/06		APPROVED FOR CONSTRUCTION			
Transportation		[Signature]		7/16/06					
Water/Wastewater		[Signature]		7/16/06					
Hydrology		[Signature]		7/16/06					
Constr. Mngmt.		[Signature]		7/16/06					
Constr. Coord.		[Signature]		7/16/06					
City Project No. 785881						Sheet 1 of 4			



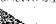
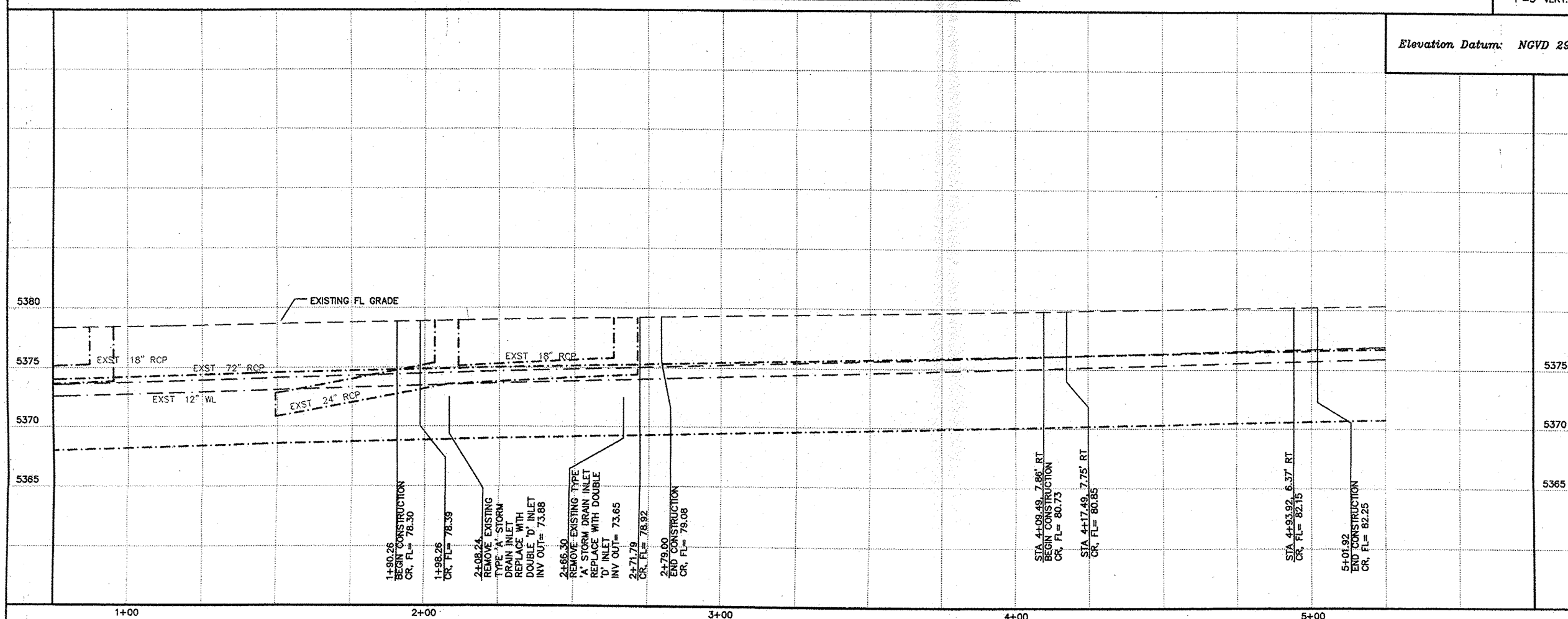
	TC	FL
1	82.65	81.98
2	—	82.28
3	82.01	82.24



CURVE	RADIUS	LENGTH	DELTA
FC1	25.00	27.46	62°55'23"
FC2	25.00	39.49	90°30'40"
FC3	25.00	39.68	90°56'31"
FC4	25.00	38.04	87°11'00"

SCALES:  
1"=20' HOR  
1"=5' VERT.

Elevation Datum: NGVD 29



**ISAACSON & ARFMAN, P.A.**  
Consulting Engineering Associates  
128 Monroe Street N.E.  
Albuquerque, New Mexico 87108  
Ph. 505-268-8828 Fax. 505-268-2632  
1487PVI.DWG:rh 06/23/06

CITY OF ALBUQUERQUE PUBLIC WORKS DEPARTMENT ENGINEERING GROUP	
TITLE:	BALDRIDGE STORAGE UNITS INDIAN SCHOOL ROAD N.E.

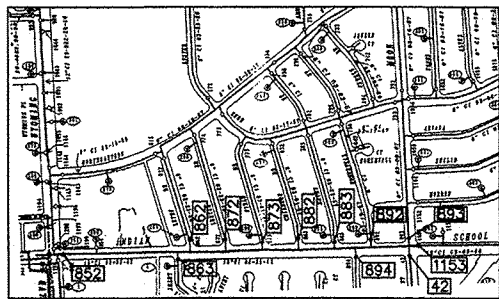
Design Review Committee	City Engineer Approval
APPROVED JUL 14 2006 DESIGN REVIEW COMMITTEE	APPROVED JUL 21 2006 CITY ENGINEER

[illegible]



**KEYED CONSTRUCTION NOTES:**

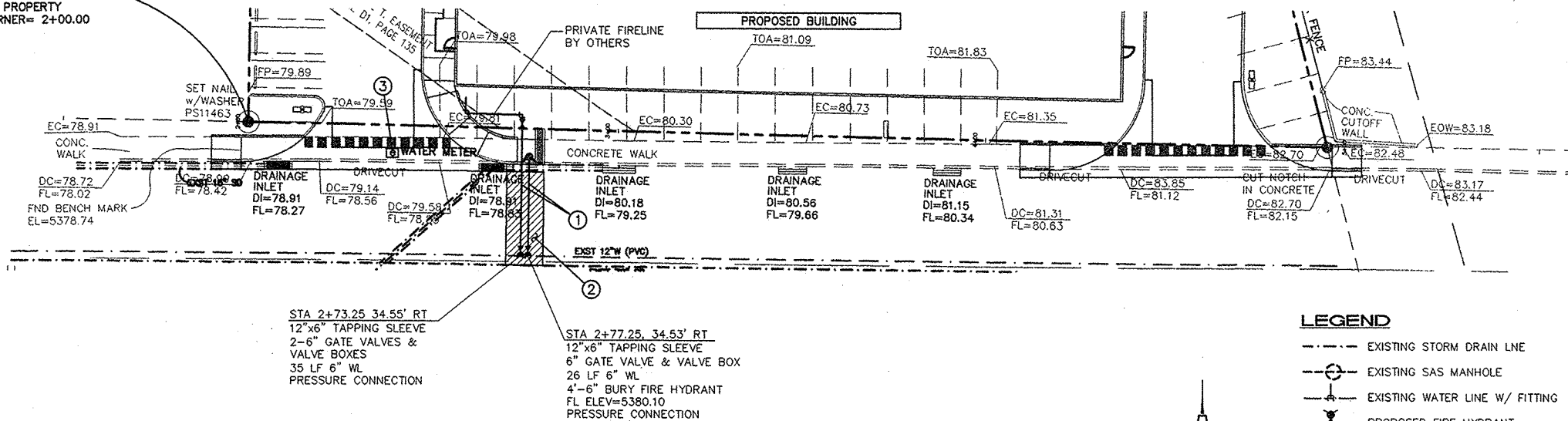
1. INSTALL TWO 6" WATERLINES BENEATH 18" STORM DRAIN CONNECTOR PIPE. USE VERTICAL BENDS AS NEEDED TO ACHIEVE VERTICAL ALIGNMENTS.
2. REMOVE AND REPLACE 28 SY ARTERIAL ASPHALT PAVING PER COA STD DWG #2465.
3. CONSTRUCT REINFORCED CONCRETE PAD WITH HEAVY DUTY WATER METER BOX INCLUDING COVER PLATE PER COA DWG #2363 & 2369.



**WATER SHUT-OFF PLAN**

SHUT-OFF VALVES [852] [853] [862] [872] [873] [882] [883] [894] [892] [893] [1153] & [12] TO PROVIDE NON-PRESSURE CONNECTION. THE CONTRACTOR SHALL CONTACT WATER SYSTEMS DIVISION (857-8200) 7 WORKING DAYS PRIOR TO SHUT-OFF OR TURN-ON AT VALVES. ONLY CITY PERSONNEL ARE ALLOWED TO OPERATE VALVES.

BASIS OF ALIGNMENT IS SOUTH PROPERTY LINE. SW PROPERTY CORNER= 2+00.00



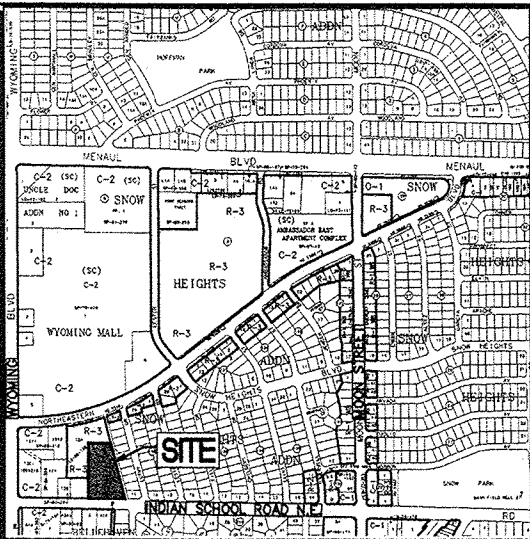
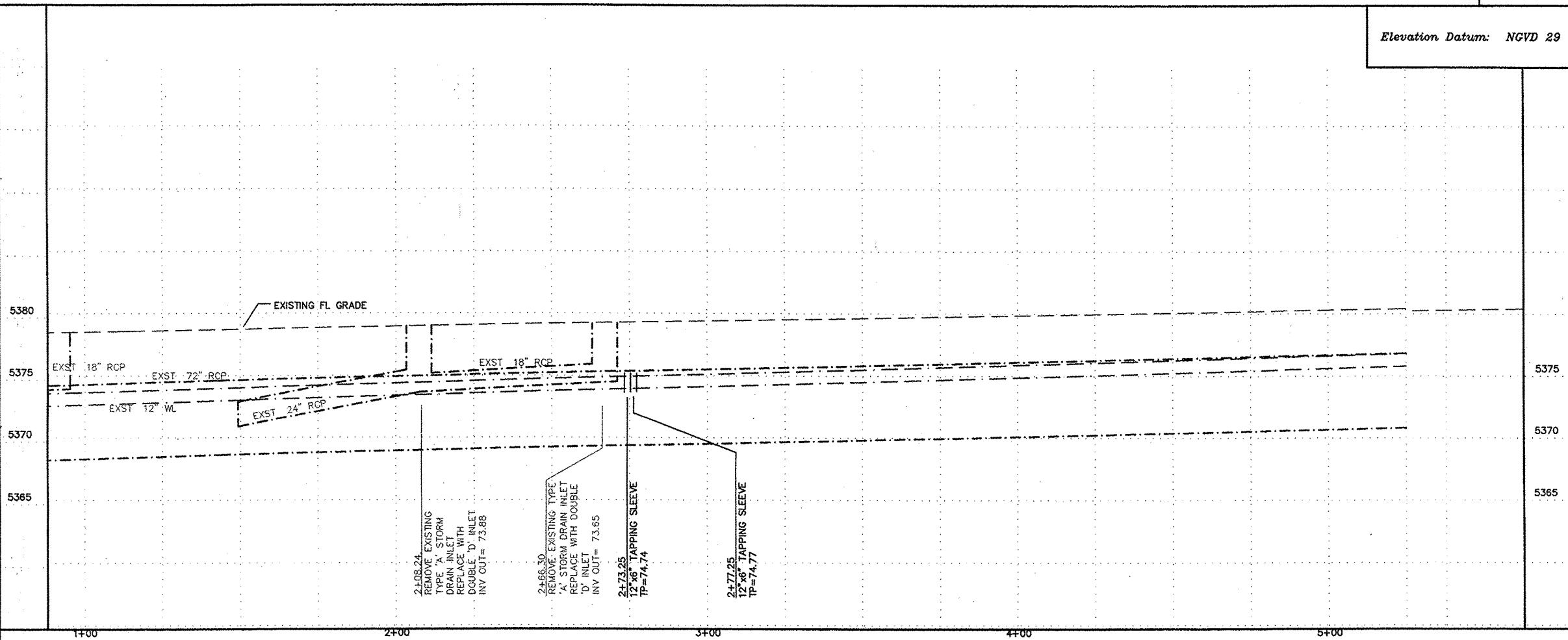
**LEGEND**

- EXISTING STORM DRAIN LINE
- EXISTING SAS MANHOLE
- EXISTING WATER LINE W/ FITTING
- PROPOSED FIRE HYDRANT

SCALES:  
1"=20' HOR.  
1"=5' VERT.

Elevation Datum: NGVD 29

**INDIAN SCHOOL RD**



**VICINITY MAP**

H-20-Z 1"=750'±

**RESTRAINED JOINT LENGTHS, L<sub>r</sub>, FOR TEES, (FT.)**  
ALL JOINTS AT THE TEE MUST BE RESTRAINED.

SIZE	RUN	BRANCH
12x12x12	15	17
12x12x6	5	19
6x6x6	6	20
6x6x4	2	20

THIS TABLE IS BASED UPON THE FOLLOWING CRITERIA:

- DEPTH OF BURY: 3.0 FT. MINIMUM
- FACTOR OF SAFETY: 1.25
- MATERIAL: PVC PIPE
- SOIL TYPE: GM/SM - SILTY GRAVELS AND SILTY SANDS, GRAVEL-SAND-SILT MIXTURES.
- TEST PRESSURE: 150 PSI
- TRENCH TYPE 4: PIPE BEDDED IN SAND, GRAVEL, OR CRUSHED STONE TO DEPTH OF 1/8 PIPE DIAMETER, 4 INCH MINIMUM; BACKFILL COMPACTED TO TOP OF PIPE.

DIFFERENT CRITERIA, E.G., DUCTILE IRON PIPE, GREATER DEPTH OF BURY, ETC., WILL REQUIRE DIFFERENT RESTRAINED LENGTHS. THESE MUST BE CALCULATED BY A QUALIFIED PROFESSIONAL ENGINEER AND APPROVED BY THE PUBLIC WORKS DEPARTMENT.

**RESTRAINED JOINT LENGTHS, L<sub>r</sub>, FOR HORIZONTAL BENDS, VALVES, AND DEAD ENDS, (FT.)**

SIZE	HORZ. BENDS				VALVES & DEAD ENDS
	90°	45°	22 1/2°	11 1/4°	
12	30	12	6	3	85
12	17	7	3	1	46
6	12	5	2	1	32

**RESTRAINED JOINT LENGTHS, L<sub>r</sub>, FOR REDUCERS, (FT.)**  
MINIMUM UNOBSTRUCTED, STRAIGHT-RUN LENGTH: RESTRAIN EITHER LARGE PIPE, OR SMALL PIPE.

SIZE	LARGE SIDE		SMALL SIDE	
	SIZE	LENGTH	SIZE	LENGTH
12x10	25	30	10x6	44
12x6	29	121	8x6	25
12x4	74	213	8x4	43

**NOTES:**

1. ALL MECHANICAL JOINTS SHALL BE RESTRAINED AT THE FITTING.
2. THE CONTRACTOR SHALL PROVIDE A MINIMUM PIPE LENGTH OF 20 LF FROM ALL MECHANICAL JOINTS. ALL PIPE JOINTS WITHIN 20 LF OF A MECHANICAL JOINT SHALL BE RESTRAINED AT THE CONTRACTOR'S EXPENSE.
3. THE CONTRACTOR SHALL RESTRAIN ALL PIPE JOINTS IN THE SPECIFIED DISTANCE LISTED IN THE TABLE ON THIS SHEET.
4. THE CONTRACTOR SHALL RESTRAIN ALL FIRE HYDRANT JOINTS FROM THE TEE ON THE MAIN TO THE FIRE HYDRANT FLANGE.

**RESTRAINED JOINT LENGTHS FOR WATERLINE FITTINGS**

**ISAACSON & ARFMAN, P.A.**  
Consulting Engineering Associates  
128 Monroe Street N.E.  
Albuquerque, New Mexico 87108  
Ph. 505-268-8828 Fax. 505-268-2632  
1487UTL1.DWG 06/22/06

CITY OF ALBUQUERQUE  
PUBLIC WORKS DEPARTMENT  
ENGINEERING GROUP

**TITLE: BALDRIDGE STORAGE UNITS INDIAN SCHOOL ROAD N.E. UTILITY PLAN & PROFILE**

Design Review Committee: APPROVED JUL 14 2006  
City Engineer Approval: APPROVED JUL 21 2006

DESIGNED BY: SNM  
DRAWN BY: REF  
CHECKED BY: SNM

City Project No. 785881 Zone Map No. H-20 Sheet 4 of 4