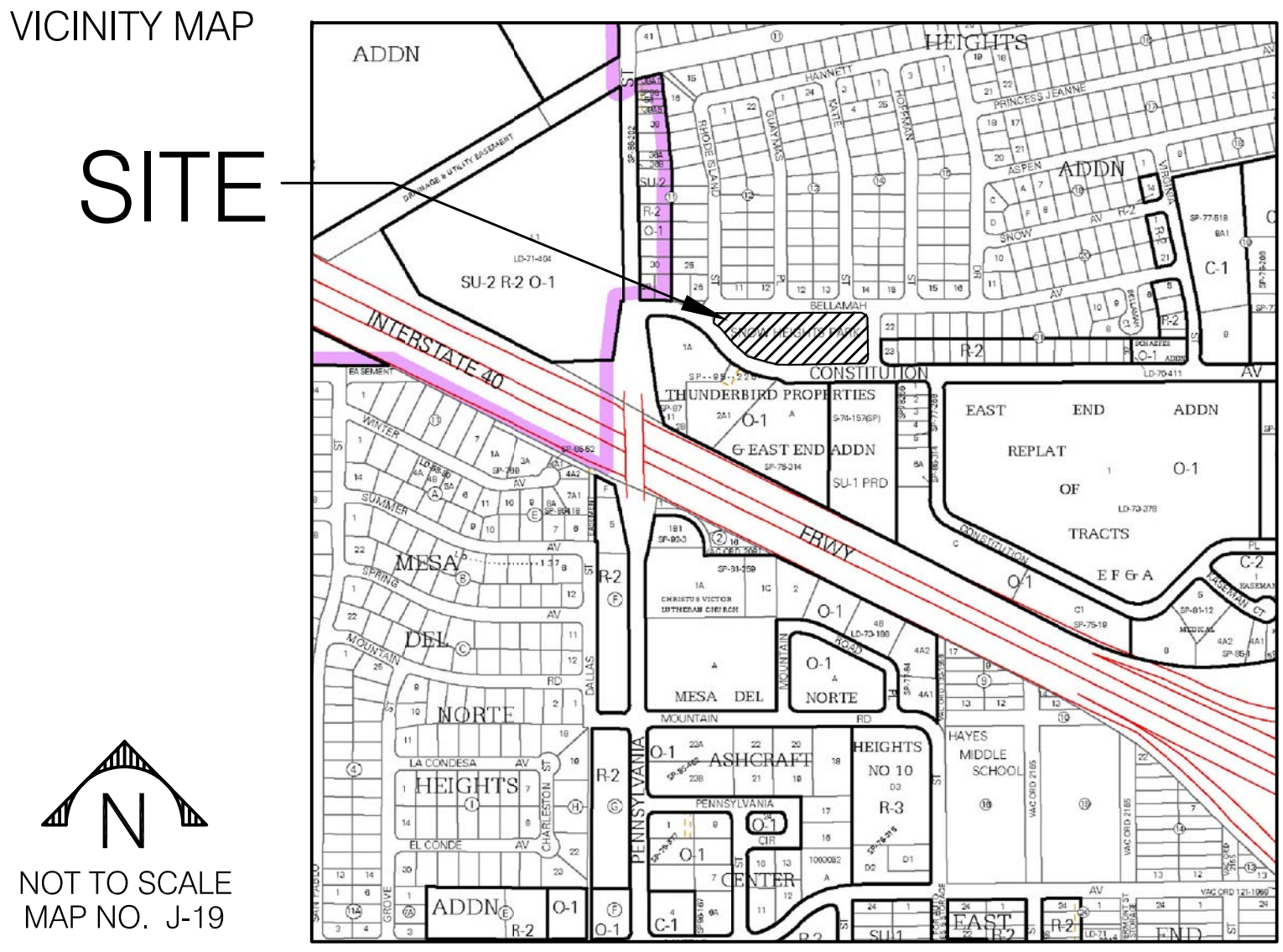


SNOW HEIGHTS PARK PLAY AREA ADDITION



City of Albuquerque
Managing Department:
Department of Municipal Development
Park Design and Construction Division

Owner:
Parks and Recreation Department



Date of Record Drawings: July 6, 2009

RECORD DRAWINGS JUNE, 2009

This set of Record Documents consists of corrected plans showing the reported location of the work, conforming to the construction records provided by the Contractor. While the information submitted by the Contractor and incorporated by the Landscape Architect into the Record Documents is assumed to be reliable, the Landscape Architect has not verified the accuracy and/or completeness of the information and shall not be responsible for any errors or omissions which may be incorporated herein as a result. Those relying on these Record Documents are advised to obtain independent verification of their accuracy before applying it for any purpose.

Property Information

Legal Description: 7500 Constitution Av. NE, Snow Heights Addition Park, Block 0000, Snow Heights Addition Subdivision
Meter Address: 1229 Katie St. NE
Total Site Area: 2.47 acres
Turf Area Removed: 0.18 acres (7,900 sf)

Index of Drawings

- 1 Cover Sheet
- 2 General Notes
- 3 Site Plan
- 4 Dimension Plan and Site Details
- 5 Play Area Details
- 6 Irrigation Plan
- 7 Acceptance Forms

UTILITY COMPANY CONTACTS

CITY OF ALBUQUERQUE (WATER & SEWER)
BILL BLACH
Engineer/Utility Development
P.O. Box 1293
Albuquerque, New Mexico 87103
(505) 768-2729

PNM-ELECTRIC
JIM HILL
Engineering Representative
4201 Edith Boulevard NE
Albuquerque, New Mexico 87107
(505) 241-3581

PNM-GAS CO.
JOE DUNLAP
Project Engineer
4625 Edith Boulevard NE
Albuquerque, New Mexico 87107
(505) 241-7771

QWEST/US WEST
DAVID MULLER
Capacity Provisioning Specialist
400 Tijeras Ave. NW, Suite 710
Albuquerque, New Mexico 87102
(505) 245-8706

QWEST LONG DISTANCE
LARRY KELLY
Senior Operations Tech
400 Tijeras Ave. NW, Suite 710
Albuquerque, New Mexico 87102
(505) 246-0501

AT&T
DAVID CROWL
Albuquerque, New Mexico 87103
P.O. Box 1293
Albuquerque, New Mexico 87103
(505) 842-2911

MCI WORLDCOM
ANDY DARNELL
Operation Manager
6001 Midway Park NE
Albuquerque, New Mexico 87109
(505) 346-4470

COMCAST CABLE
RITA ERICKSON
Planning and Design Supervisor
4611 Montbel Pl. NE
Albuquerque, New Mexico 87107
(505) 761-6235

UNIVERSE ACCESS
JAMIE MARTINEZ
Resource Supervisor
505 Marquette Ave. NW, #119A
Albuquerque, New Mexico 87102
(505) 328-2675

E-SPIRE (ACSI)
JOHN MARES
505 Marquette Ave. NW, Suite 1605
Albuquerque, New Mexico 87102
(505) 998-2274

McLEOD USA
RICK MUELLER
Supervisor of Outside Techs.
505 Marquette Ave. NW, Suite 1600
Albuquerque, New Mexico 87102
(505) 244-3161

CityNet TELECOMMUNICATIONS
JOSH NELSON
Field Representative
13500 Coronado freeway
Albuquerque, New Mexico 87121
(505) 991-2120

TIME WARNER TELECOM
ROY HARRISON
Plant Manager
3830 Singer Blvd. NE, Suite 1000
Albuquerque, New Mexico 87109
(505) 938-7339

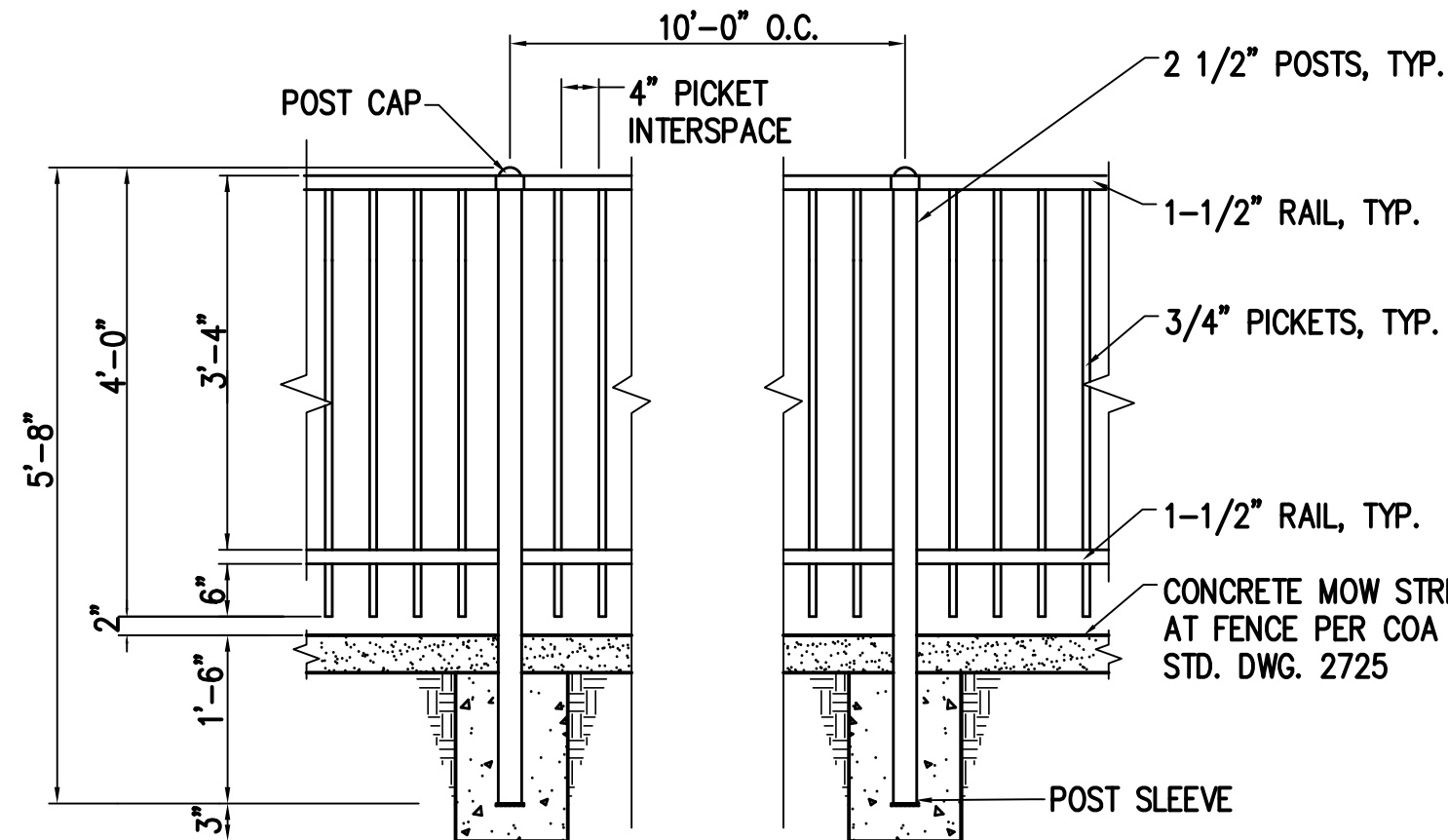
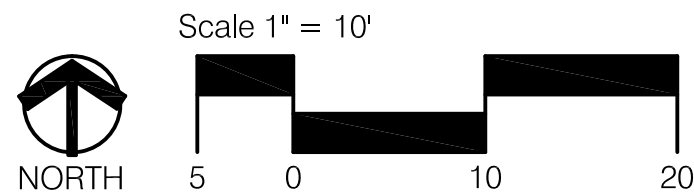
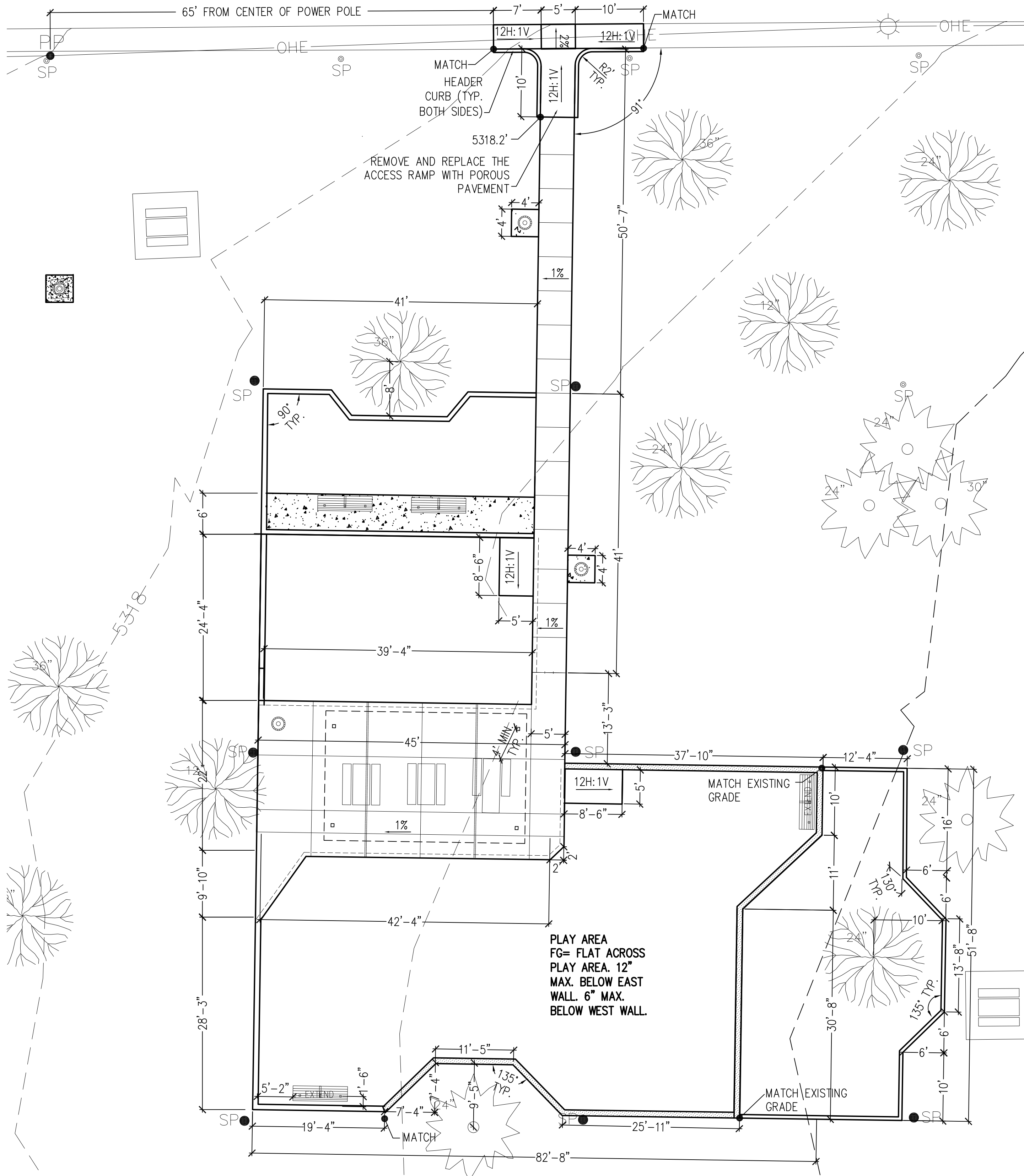
LEVEL 3 COMMUNICATIONS, LLC
STEVE GILMAN
Resource Supervisor
1025 Eldorado Blvd.
Broomfield, Colorado 80021
(720) 888-5920

XSPEDIUS MANAGEMENT CO.
STEVE BENJAMIN
Operations Support Manager
505 Marquette Ave. NW, Suite 1605
Albuquerque, New Mexico 87102
(505) 345-6555

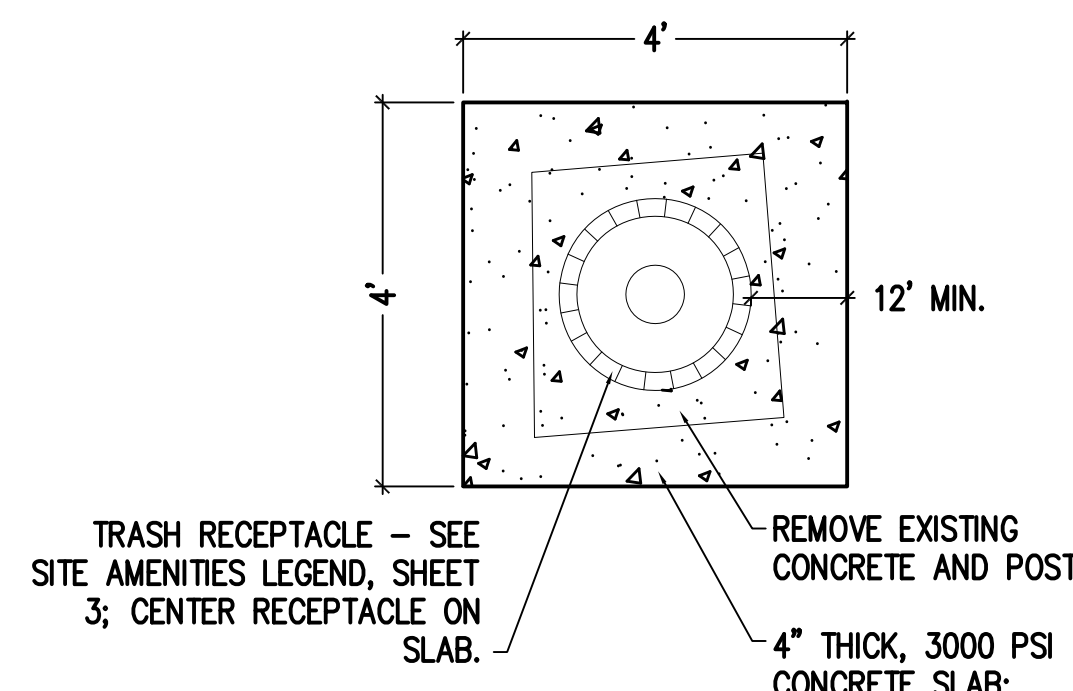
OSO GRANDE TECHNOLOGIES
BUD LENSING
Resource Supervisor
505 Marquette Ave. NW, #119A
Albuquerque, New Mexico 87102
(505) 328-2675



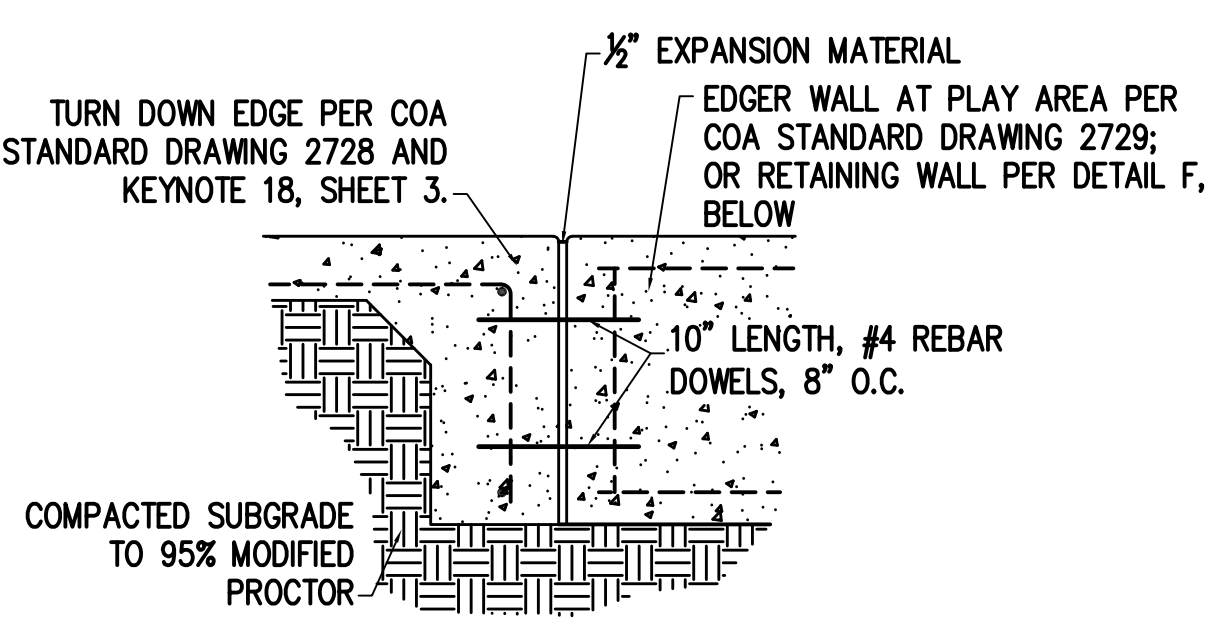
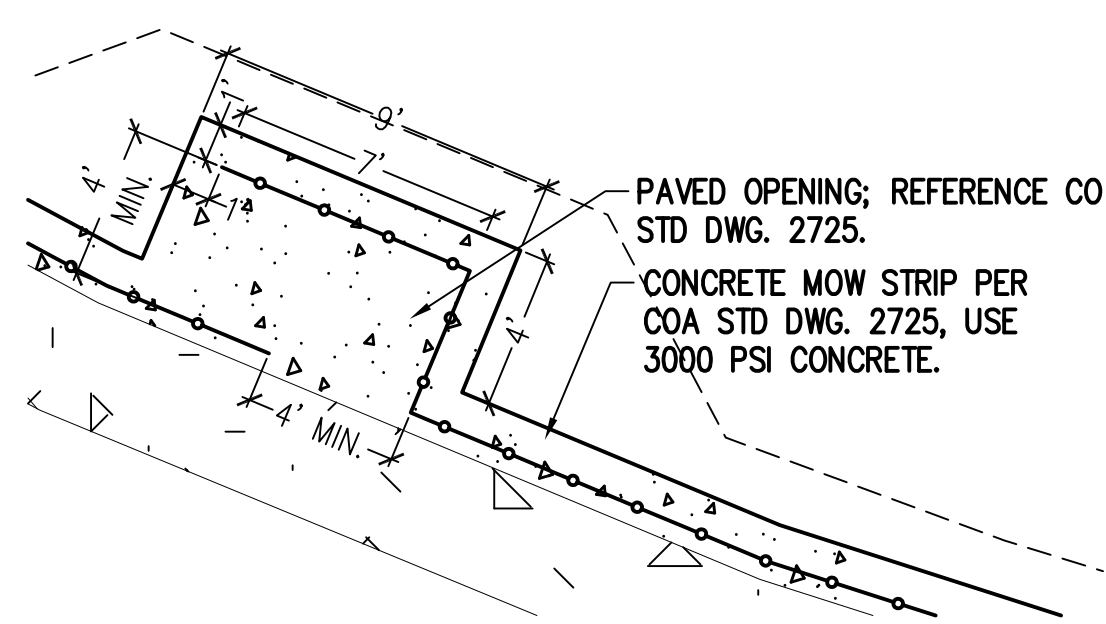
REV.	SHEETS	CITY ENGINEER	DATE	USER DEPARTMENT	DATE	USER DEPARTMENT	DATE
ENGINEERS STAMP & SIGNATURE		APPROVED	ENGINEER		DATE	APPROVED FOR CONSTRUCTION	
		DRC Chairman					
		Transportation					
		Water/Wastewater					
		Hydrology					
		C I P					
		Constr. Mngmt.					
		Constr. Coord.				CITY ENGINEER	
						DATE	
PROJECT NUMBER				788701		SHEET 1 OF 7	



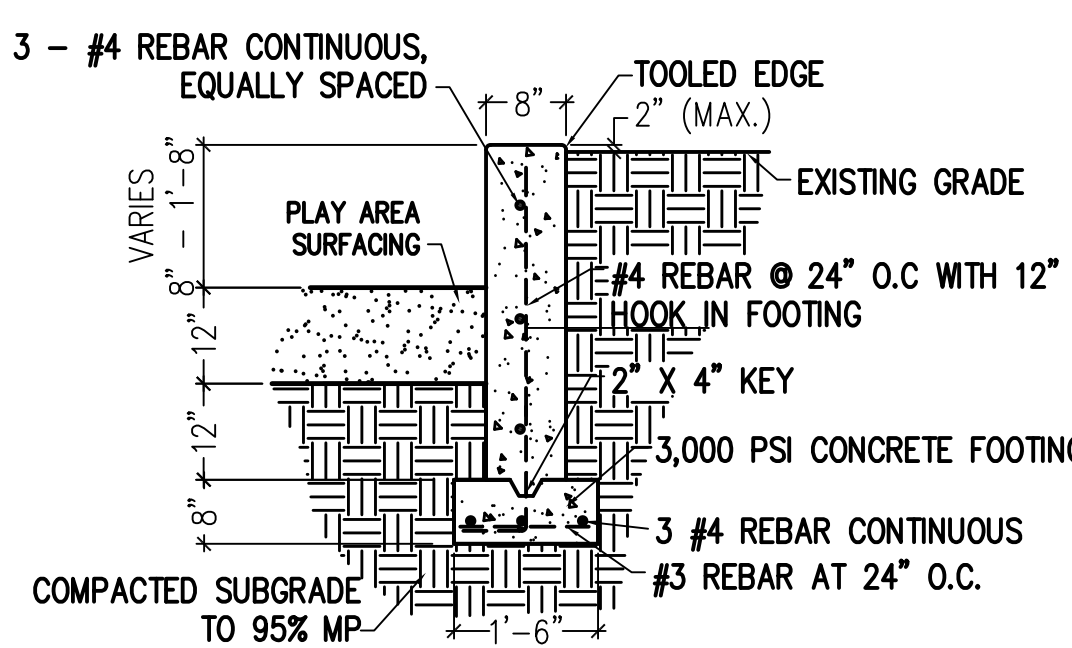
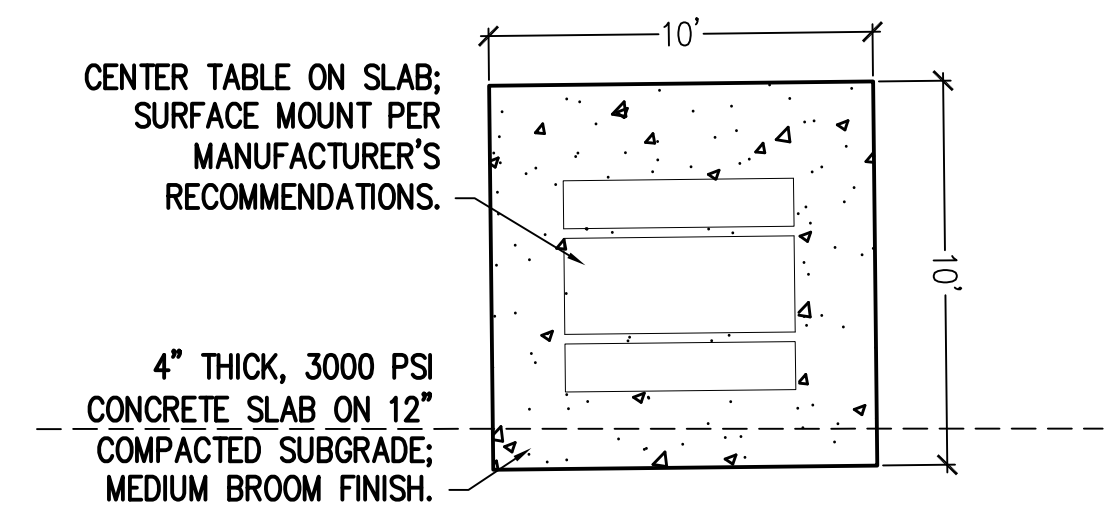
NOTE:
FENCE SHALL BE PRIMED AND PAINTED. CONTRACTOR
SHALL PAINT ALL POSTS, RAILS, AND PICKETS WITH TWO
COATS OF SEMI GLOSS ACRYLIC LATEX PAINT. PAINT



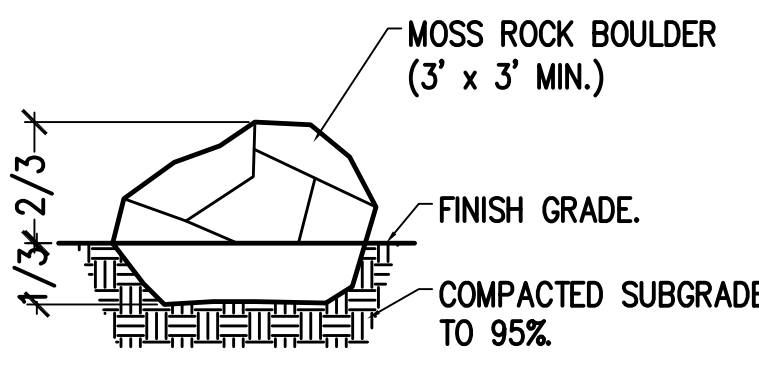
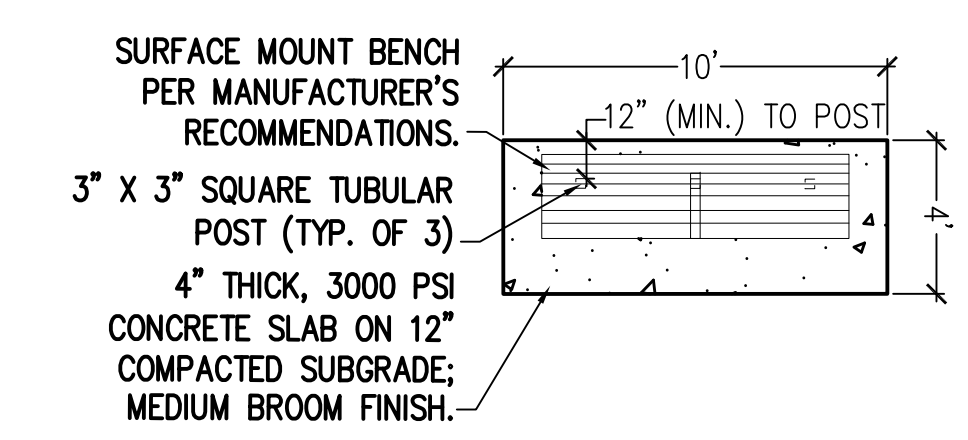
A 3 TUBULAR STEEL FENCE DETAIL NO SCALE
E 3 TRASH RECEPTACLE ON CONCRETE SCALE: 1" = 5'



B 3 FENCE OPENING DETAIL SCALE: 1" = 5'
F 3 EDGER WALL AT THICKENED EDGE SCALE: 1" = 5'



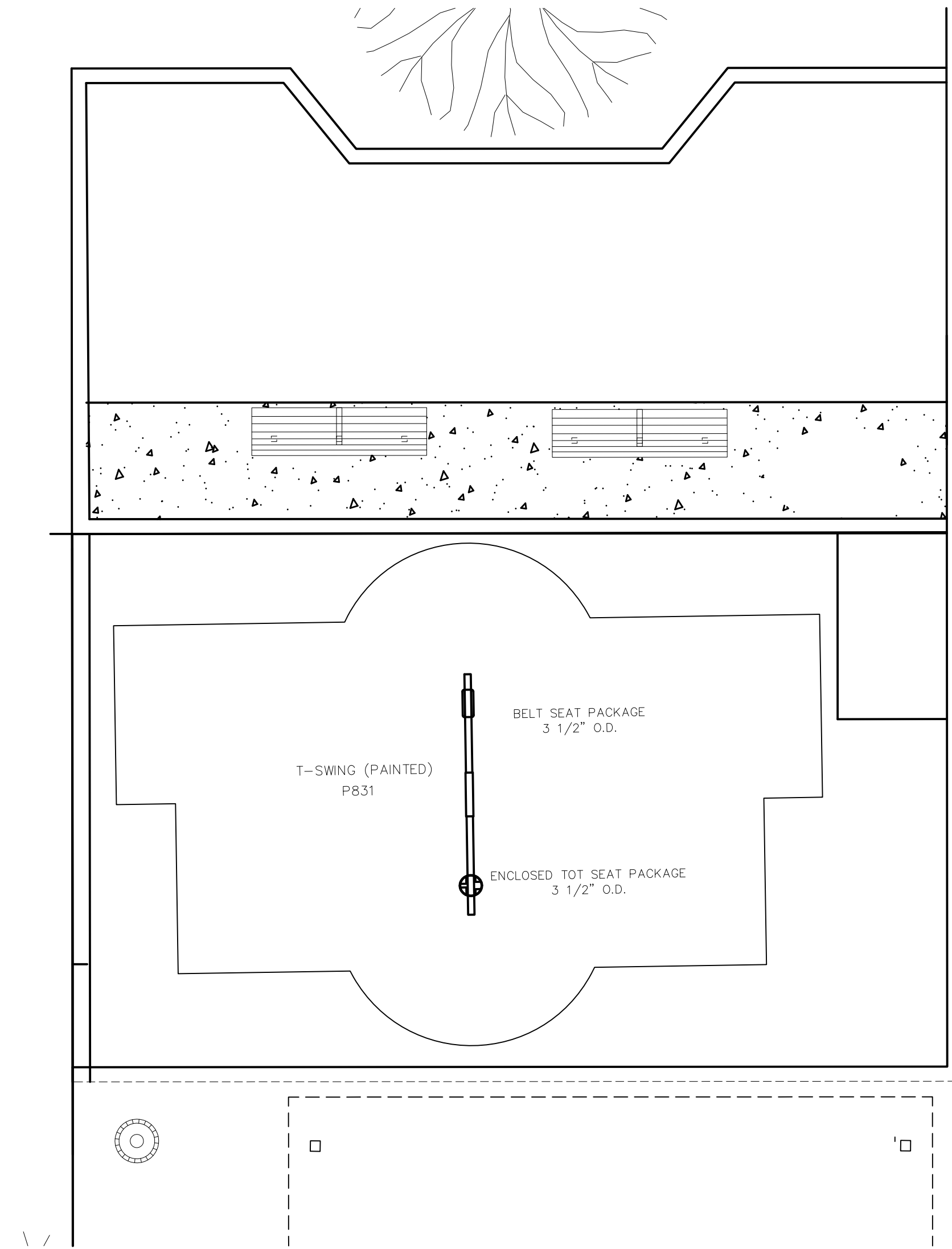
C 3 PICNIC TABLE ON CONCRETE SLAB DETAIL SCALE: 1" = 5'
G 3 RETAINING WALL AT PLAY AREA SCALE: 1" = 2'



D 3 BENCH ON CONCRETE SLAB DETAIL SCALE: 1" = 5'
H 3 BOULDER INSTALLATION DETAIL SCALE: 1" = 4'

CITY OF ALBUQUERQUE DEPARTMENT OF MUNICIPAL DEVELOPMENT PARK DESIGN & CONSTRUCTION DIVISION			
TITLE: SNOW HEIGHTS PARK PLAY AREA ADDITION DIMENSION PLAN AND SITE DETAILS			
Design Review Committee	City Engineer Approval	Last Design Update	No. / Day / Yr.
City Project No.	788701	Zone Map No.	J-19
Sheet	4	of	7

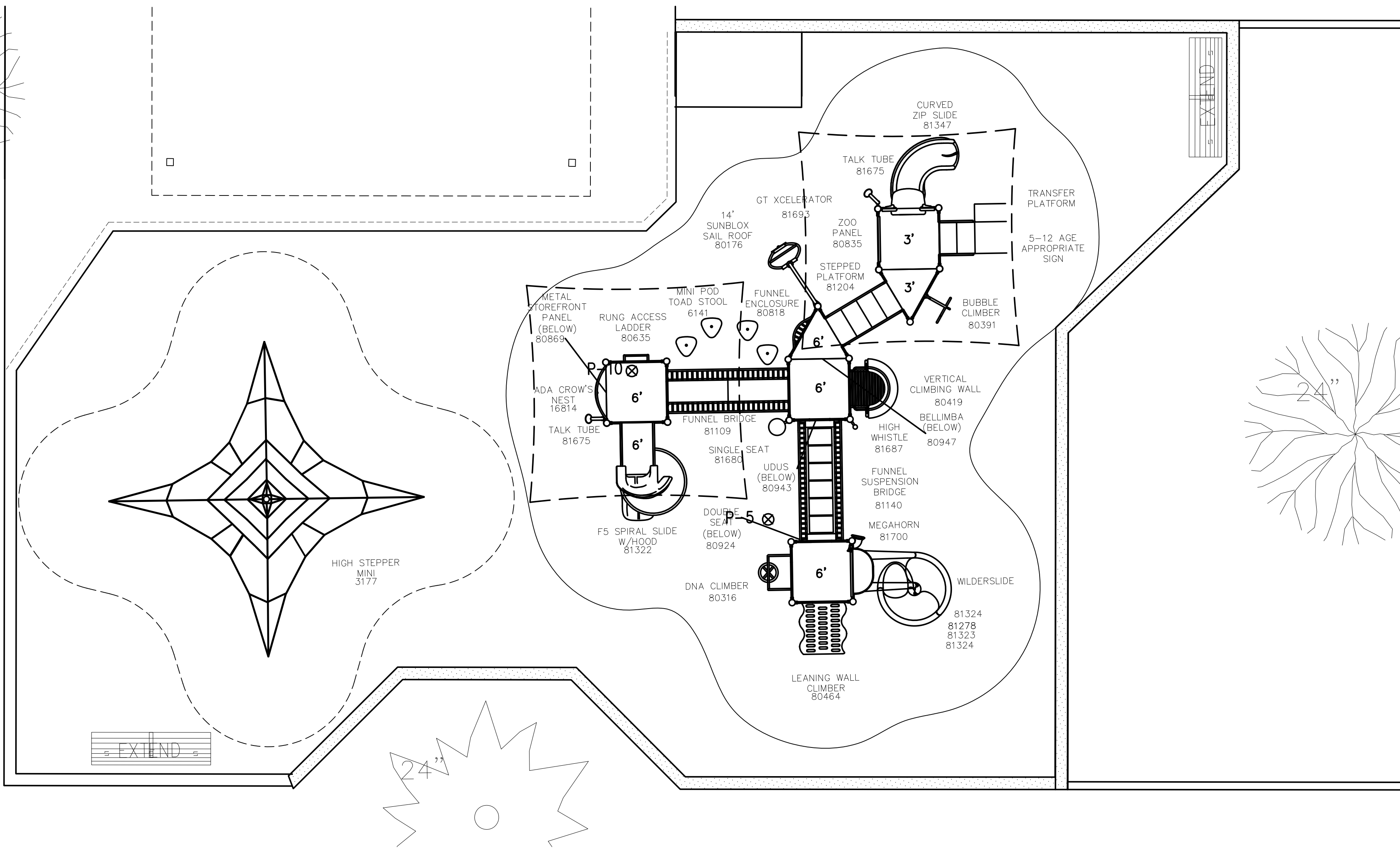
AS BUILT INFORMATION				BENCH MARKS				SURVEY INFORMATION				ENGINEERS SEAL			
CONTRACTOR	WORK	DATE	NO.	CONTRACTOR	WORK	DATE	NO.	NO.	BY	DATE	NO.	NO.	BY	DATE	NO.
	INSPECTOR'S	DATE			INSPECTOR'S	DATE									
	ACCEPTANCE BY	DATE			ACCEPTANCE BY	DATE									
	VERIFICATION BY	DATE			VERIFICATION BY	DATE									
	DRAWINGS BY	DATE			DRAWINGS BY	DATE									
	CHECKED BY	DATE			CHECKED BY	DATE									
	RECORDED BY	DATE			RECORDED BY	DATE									
	NO.				NO.										



A
3

PLAY AREA – NORTH (SWINGS)

SCALE: 1" = 5'



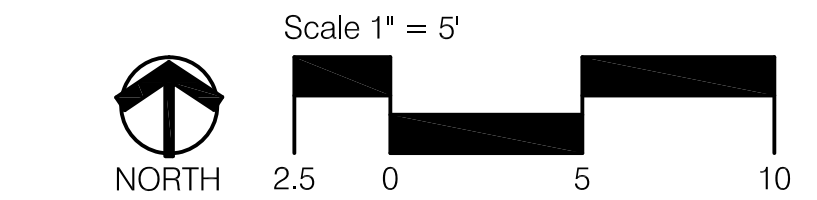
B
3

PLAY AREA – SOUTH

SCALE: 1" = 5'

Part No.	Description	Quantity
	CUSTOM STRUCTURE: Black Posts, Beige Plastics, Red Decks, Red Accents, Arizona Tan and Red Sunbox	
16700.00	ADA 49" Sq Punch Steel Deck	4
16701.00	ADA 49" Tri Punch Steel Deck	2
G80016	9' Upright Assembly (galv)	1
G80019	12' Upright Assembly (galv)	8
80176.00	14' Sunbox Sail Roof	2
80316.00	6'-0" Dna Climber	1
6141.00	Mini Pod Toad Stool	4
80419.00	8' Vertical Climb Wall Attachment	1
80464.00	6'-0" Leaning Wall Climber	1
80631.00	Rung Access 3' & 4'	1
80673.00	3'-0" Transfer Platform	1
80818.00	Funnel Enclosure	1
80835.00	Zoo Panel Enclosure	1
80869.00	Metal Storefront Panel	1
80924.00	Double Seat	1
80391.00	Bubble Climber	1
809047.00	Bellimba	1
81112.00	Mini-Arch Bridge	1
81140.00	Funnel Suspension Bridge	1
80943.00	UduS	1
16814.00	ADA Crow's Nest	1
81109.00	Funnel Bridge-98"	1
81278.00	Wildslide 3' Support	2
81322.00	6' F5 Slide Attachment	1
81323.00	1' Wildslide Exit Section	1
81324.00	Wildslide 135" Section	2
81325.00	Wildslide Entrance Section	1
81347.00	3' Curved Zip Slide	1
81672.00	5-12 Age Appropriate Sign	1
81680.00	Single Seat	1
81692.00	Xcelerator Attachment	1
G80019	12' Upright Assembly (galv)	1
H80022	15' Upright Assembly (7GA galv)	8
81675.00	6"-2'-0" Talk Tube	2

Part No.	Description	Quantity
P831	T-Swing (painted), 3 1/2 Od"	1
5023	3 1/2" Antiwrap Enclosed Tot-Galv	1
5025.00	3 1/2" Antiwrap Belt Seat-Galv	1
8888.00	High Stepper Mini: Black Post and Red Net	1
81687.00	High Whistle	1
81700.00	MegaHorn	1



CITY OF ALBUQUERQUE DEPARTMENT OF MUNICIPAL DEVELOPMENT PARK DESIGN & CONSTRUCTION DIVISION	
TITLE: SNOW HEIGHTS PARK PLAY AREA ADDITION PLAY AREA DETAILS	
Design Review Committee	City Engineer Approval
Last Design Update	Mo. / Day / Yr.
City Project No. 788701	Zone Map No. J-19
Sheet 5 of 7	

ENGINEERS SEAL		SURVEY INFORMATION		BENCH MARKS		AS BUILT INFORMATION	
		NO.	DATE			CONTRACTOR	
		BY				WORKED BY	DATE
						INSPECTED BY	DATE
						ACCEPTANCE BY	DATE
						FIELD VERIFICATION BY	DATE
						DRAWINGS BY	DATE
						CHECKED BY	DATE
						MICRO-FILM INFORMATION	
						RECORDED BY	DATE
						NO.	

RECORD DRAWINGS DATE: JULY 06, 2009

PROJECT #788701-SNOW HEIGHTS PARK PLAY AREA ADDITION

