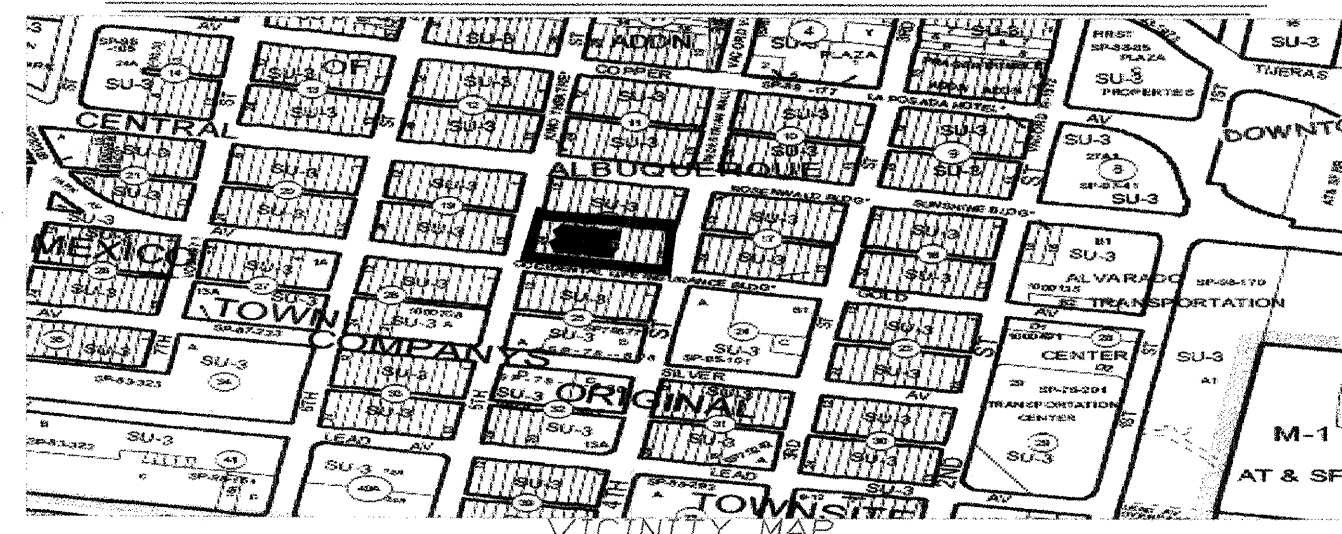


788881

CITY OF ALBUQUERQUE
PRIVATE FIRE LINE INSTALLATION

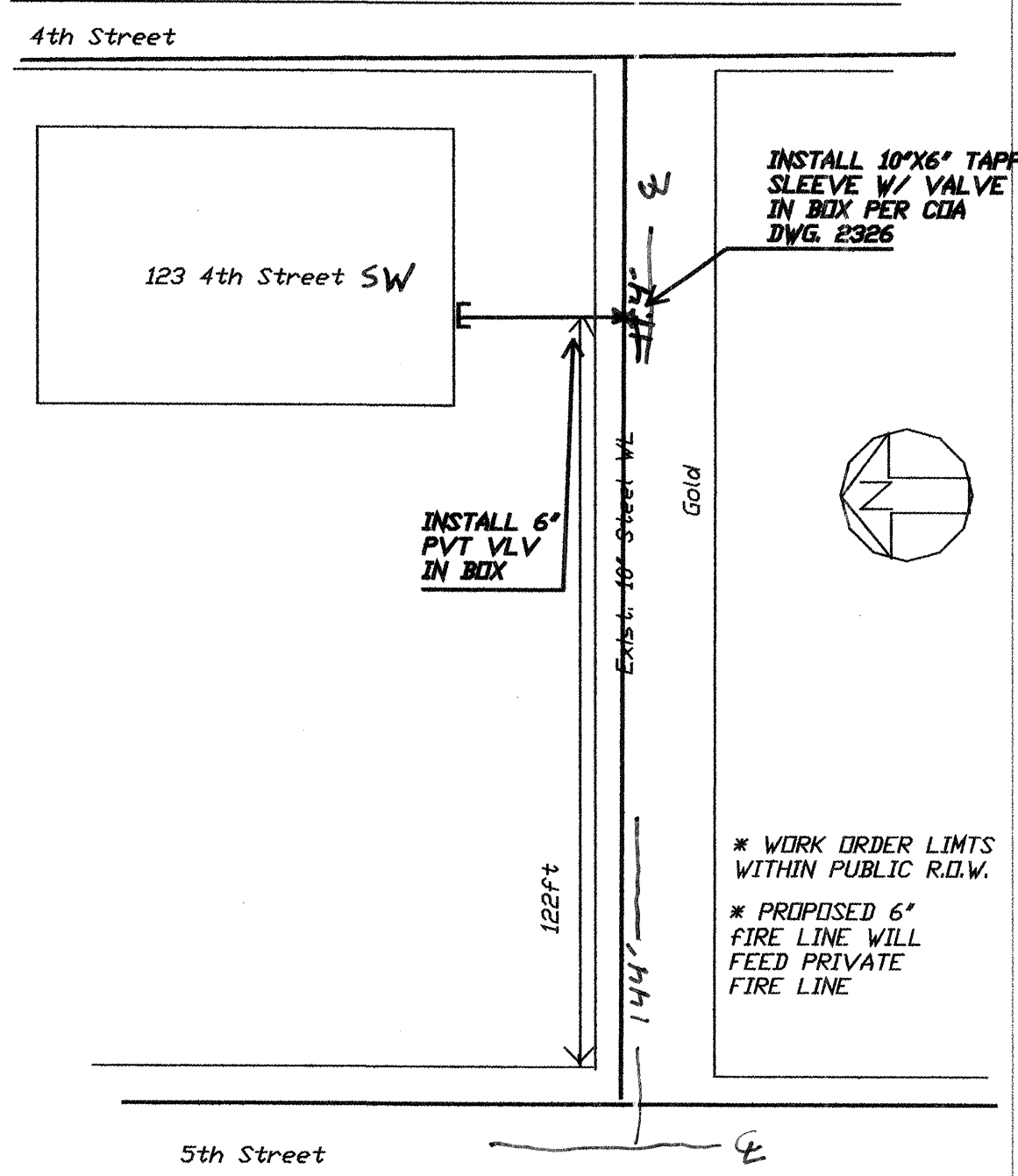
LEGAL DESCRIPTION OF PROPERTY AND ADDRESS:

123 4th Street SW, NW
NMT Addition Lots 13-24

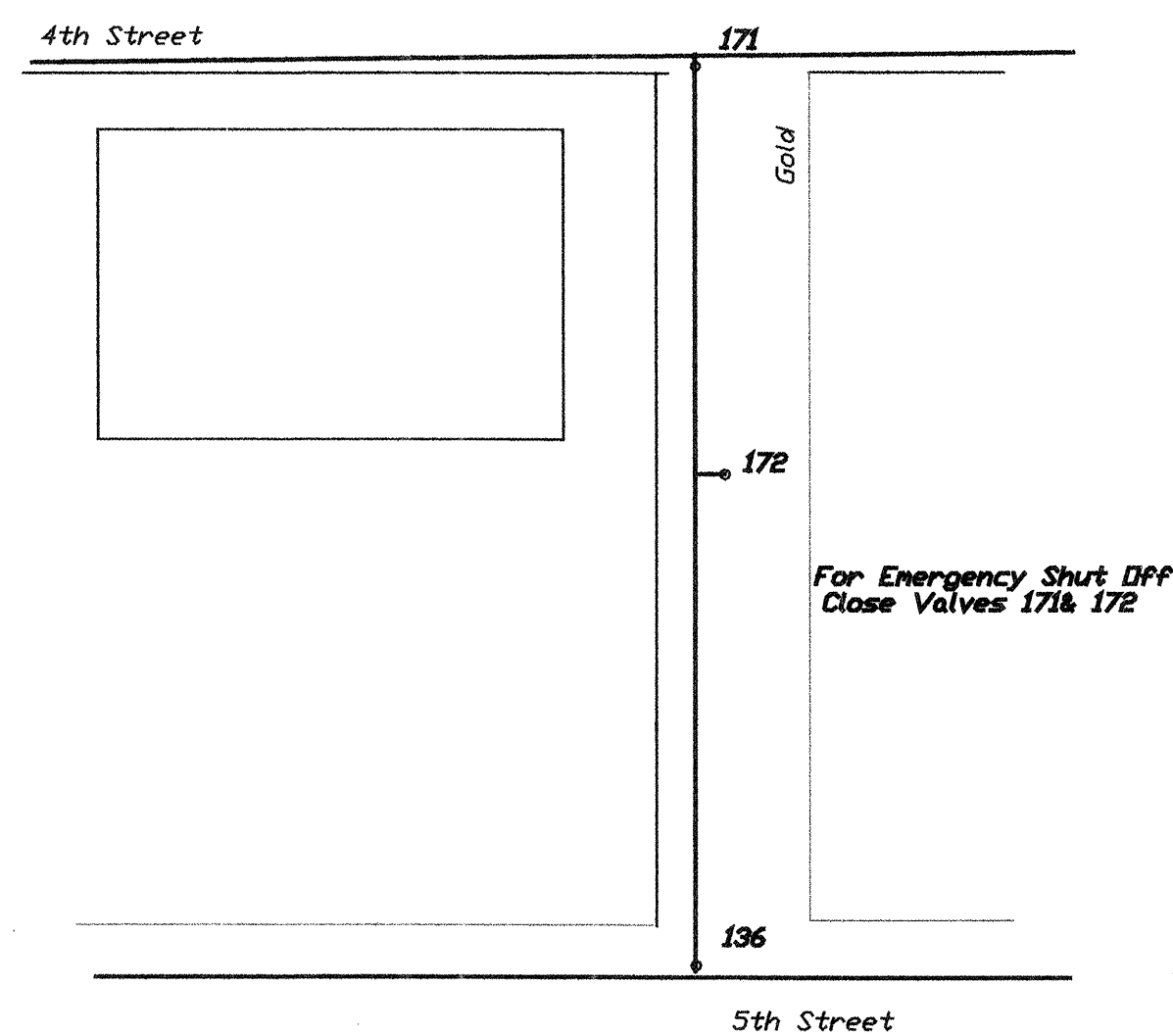
NOTICE TO CONTRACTORS

1. An excavation/barricade permit will be required before beginning any work within City, County, or Village right-of-way. An approved copy of these plans must be submitted at the time of application for these permits.
2. All work detailed on these plans to be done, except as otherwise stated or provided hereon, will be constructed in accordance with "City of Albuquerque Interim Standard Specification for Public Works Construction, 1986," (latest revision).
3. Two working days prior to any excavation, the contractor must contact New Mexico One Call System, Inc., 260-1990, for location of existing utilities.
4. Prior to construction, the contractor will excavate and verify the horizontal and vertical locations of all construction. Should a conflict exist, the contractor will notify the Construction Engineer so that the conflict can be resolved with a minimum amount of delay.
5. The contractor will be responsible for coordinating the water shutoff with the Water Division seven (7) working days prior to construction.
6. The contractor will be responsible for performing soil density tests as required by the City of Albuquerque.

APPROVALS FOR	NAME	DATE	TITLE OF PROJECT:
DESIGN: UTILITY DEVELOPMENT	William J. Walsh	2/9/07	Any Blehl Charter School Owner: Any Blehl Charter School Contact: Joseph Raymond 405-528-8093 Drawn By: TLC Plumbing & Utility (761-9696) Constructed By: TLC Plumbing & Utility Contact: Tom Krysko 269-4157
CONSTRUCTION: CONSTRUCTION ENGINEER	B. J. J.	3/29/07	
ACCEPTANCE: CONSTRUCTION INSPECTOR	Jane Cali	3-16-07	
PROJECT NO. 788881		ZONE ATLAS	
SHEET 1 OF 5		K-14	
		hydrant1.dwg	

CITY OF ALBUQUERQUE
PRIVATE FIRE LINE INSTALLATION
SITE DETAIL

PROJECT NO. 788881	ZONE ATLAS	TITLE:
SHEET 2 OF 5	K-14	Any Blehl Charter School
hydrant2.dwg		

CITY OF ALBUQUERQUE
WATER SHUT OFF PLAN

PROJECT NO. 788881	ZONE ATLAS	TITLE:
SHEET 3 OF 5	K-14	Any Blehl Charter School
hydrant3.dwg		

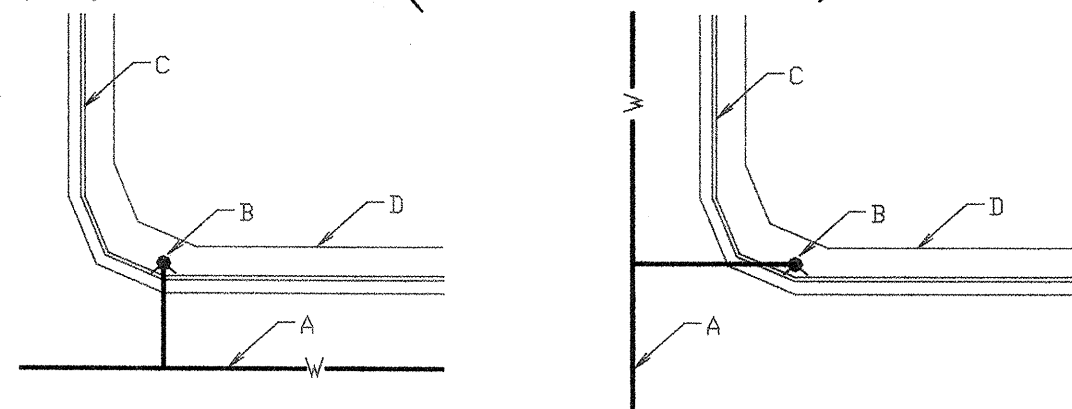
CITY OF ALBUQUERQUE
PUBLIC FIRE HYDRANT INSTALLATION
STANDARD DRAWING 2347-A

GENERAL NOTES

1. Normally, fire hydrants are located at end of curb return; hydrants will not be located within the curb return area. Fire hydrants to be located within the block length will be installed at a property line (Case 4).
2. A minimum clearance of 3'-0" will be provided between a fire hydrant and a permanent obstruction (utility pole, light standard, traffic signal, etc.).
3. For installation of fire hydrant, see dwg 2340-A.
4. See dwg 2431 for sidewalk configuration when fire hydrant is located in sidewalk.

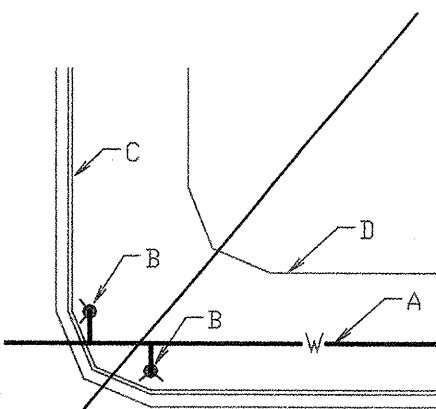
CONSTRUCTION NOTES

- A. Water main
- B. Fire hydrant
- C. Curb and gutter
- D. Right-of-way line
- E. Property line



CASE 1

CASE 2



CASE 3

CASE 4

TYPICAL LOCATIONS

PROJECT NO. 788881	ZONE ATLAS	TITLE:
SHEET 4 OF 5	K-14	Any Blehl Charter School
hydrant4.dwg		

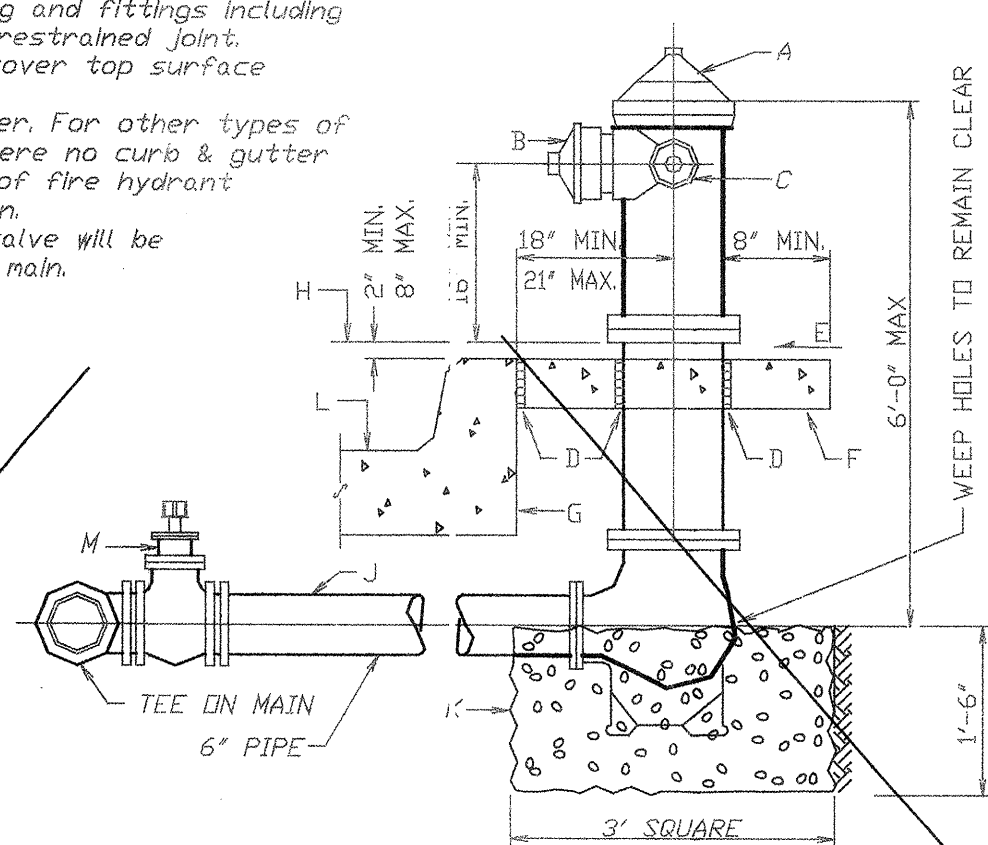
CITY OF ALBUQUERQUE
PUBLIC FIRE HYDRANT INSTALLATION
STANDARD DRAWING 2340-A

GENERAL NOTES

1. No obstruction will be permitted within 3'-0" of fire hydrant.
2. Hydrant leg shall be valved from mains 10" diameter and larger and in arterial streets located in commercial areas.
3. Contractor shall be responsible for setting top flange of fire hydrant to the dimensions shown.
4. For fire hydrant locations, see dwg. 2347-A.
5. When new or existing sidewalk abuts curb, reconstruct sidewalk per dwg. 2430, 2431.
6. Pumper nozzle to be set facing the traveled way, unless otherwise noted on plans.

CONSTRUCTION NOTES

- A. Fire hydrant per specifications
- B. Pumper nozzle 4 1/2"
- C. Hose nozzle 2 1/2"
- D. 1/2" expansion joint material
- E. Slope 1/4" per foot
- F. 3' x 3' x 6" concrete square pad, to be constructed around fire hydrant's centerline when not located within sidewalk or concrete area.
- G. Back of curb
- H. Controlled elevation line, level in all directions.
- J. Use of restrained joints is mandatory. All fire hydrant leg piping and fittings including tee on main shall be restrained joint.
- K. Gravel drain pocket, cover top surface with tar paper.
- L. Standard curb & gutter. For other types of curb & gutter, or where no curb & gutter exists, the placement of fire hydrant requires special design.
- M. If valve is required, valve will be connected to tee at main.



DETAIL OF FIRE HYDRANT SETTING

PROJECT NO. 788881	ZONE ATLAS	TITLE:
SHEET 5 OF 5	K-14	Any Blehl Charter School
hydrant5.dwg		

1 2 3 4 5 6 7 8 9 10 11 12 13 14 15
26-788881-107SCANNED BY
PLANNING