

2 3 4 5 6 7 8 9 10 11 12 13 14 15  
26-11100-11-108

SCANNED BY  
PLANNING

RECORD DRAWING  
CONSTRUCTION PLANS  
FOR

ASH STREET SE  
AT LOWELL ELEMENTARY SCHOOL  
ALBUQUERQUE, NEW MEXICO

INDEX

SHEET NO.	SHEET TITLE
1	TITLE SHEET
2	ASH STREET SE PAVING PLAN AND PROFILE

CAUTION:

NOTE THAT ALL EXISTING UTILITIES MAY NOT BE SHOWN. ALL EXISTING SERVICE CONNECTIONS ARE NOT SHOWN. ANY EXISTING UTILITIES THAT ARE SHOWN ARE APPROXIMATE LOCATION ONLY. IT SHALL BE THE SOLE RESPONSIBILITY OF THE CONTRACTOR TO CONTACT ALL THE UTILITY OWNERS AND TO CONDUCT ALL NECESSARY FIELD INVESTIGATIONS PRIOR TO ANY EXCAVATIONS TO DETERMINE THE ACTUAL LOCATION OF UTILITIES AND OTHER IMPROVEMENTS.

THE FOLLOWING NOTES ALSO APPLY WHEN CHECKED

- ☒ ALL UTILITIES AND UTILITY SERVICE LINES SHALL BE INSTALLED PRIOR TO PAVING.
- ☒ BACKFILL COMPACTION SHALL BE ACCORDING TO SPECIFIED STREET USE.
- TACK COAT REQUIREMENTS SHALL BE DETERMINED BY THE ENGINEER.
- SIDEWALK AND WHEELCHAIR RAMPS WITHIN THE CURB RETURNS SHALL BE CONSTRUCTED WHEREVER A NEW CURB RETURN IS CONSTRUCTED
- IF CURB IS DEPRESSED FOR A DRIVEPAD, THE DRIVEPAD SHALL BE CONSTRUCTED PRIOR TO ACCEPTANCE OF CURB AND GUTTER.
- ALL STORM DRAINAGE FACILITIES SHALL BE COMPLETED PRIOR TO FINAL ACCEPTANCE.
- THE REQUESTOR OR DEVELOPER SHALL BE RESPONSIBLE FOR REPAIR OR REPLACEMENT OF ALL CURB AND GUTTER OR SIDEWALK DAMAGE AFTER APPROVAL BY THE CITY ENGINEER OR WORK COMPLETED BY THE CONTRACTOR.

2. CERTIFICATE OF SUBSTANTIAL COMPLIANCE

I, JEFFREY G. MORTENSEN, NMPE 8547, OF THE FIRM HIGH MESA CONSULTING GROUP, HEREBY CERTIFY THAT THE INFRASTRUCTURE CONSTRUCTED AS PART OF THIS PROJECT HAS BEEN INSPECTED BY ME OR PERSONNEL UNDER MY DIRECT SUPERVISION AND, TO THE BEST OF MY KNOWLEDGE AND BELIEF, HAS BEEN CONSTRUCTED IN ACCORDANCE WITH THE PLANS AND SPECIFICATIONS AND THE ORIGINAL DESIGN INTENT OF THE CITY ENGINEER APPROVED PLANS DATED 06-19-07. THE RECORD INFORMATION EDITED ONTO THIS ORIGINAL DESIGN DOCUMENT HAS BEEN OBTAINED BY ME OR BY PERSONNEL UNDER MY DIRECT SUPERVISION WITH AS-BUILT SURVEY DATA OBTAINED BY CHARLES G. CALA (NMPS 11184) OF THE FIRM HIGH MESA CONSULTING GROUP AND IS TRUE AND CORRECT TO THE BEST OF MY KNOWLEDGE AND BELIEF. THESE RECORD DRAWINGS ARE NOT NECESSARILY COMPLETE AND INTENDED ONLY TO VERIFY SUBSTANTIAL COMPLIANCE OF THE DESIGN INTENT OF THIS PROJECT. THOSE RELYING ON THIS DOCUMENT ARE ADVISED TO OBTAIN INDEPENDENT VERIFICATION OF ITS ACCURACY BEFORE USING IT FOR ANY OTHER PURPOSE. THIS CERTIFICATION IS SUBMITTED IN SUPPORT OF A REQUEST FOR ACCEPTANCE OF THE PROJECT BY THE CITY ENGINEER.

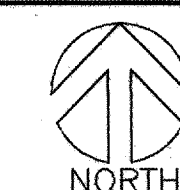
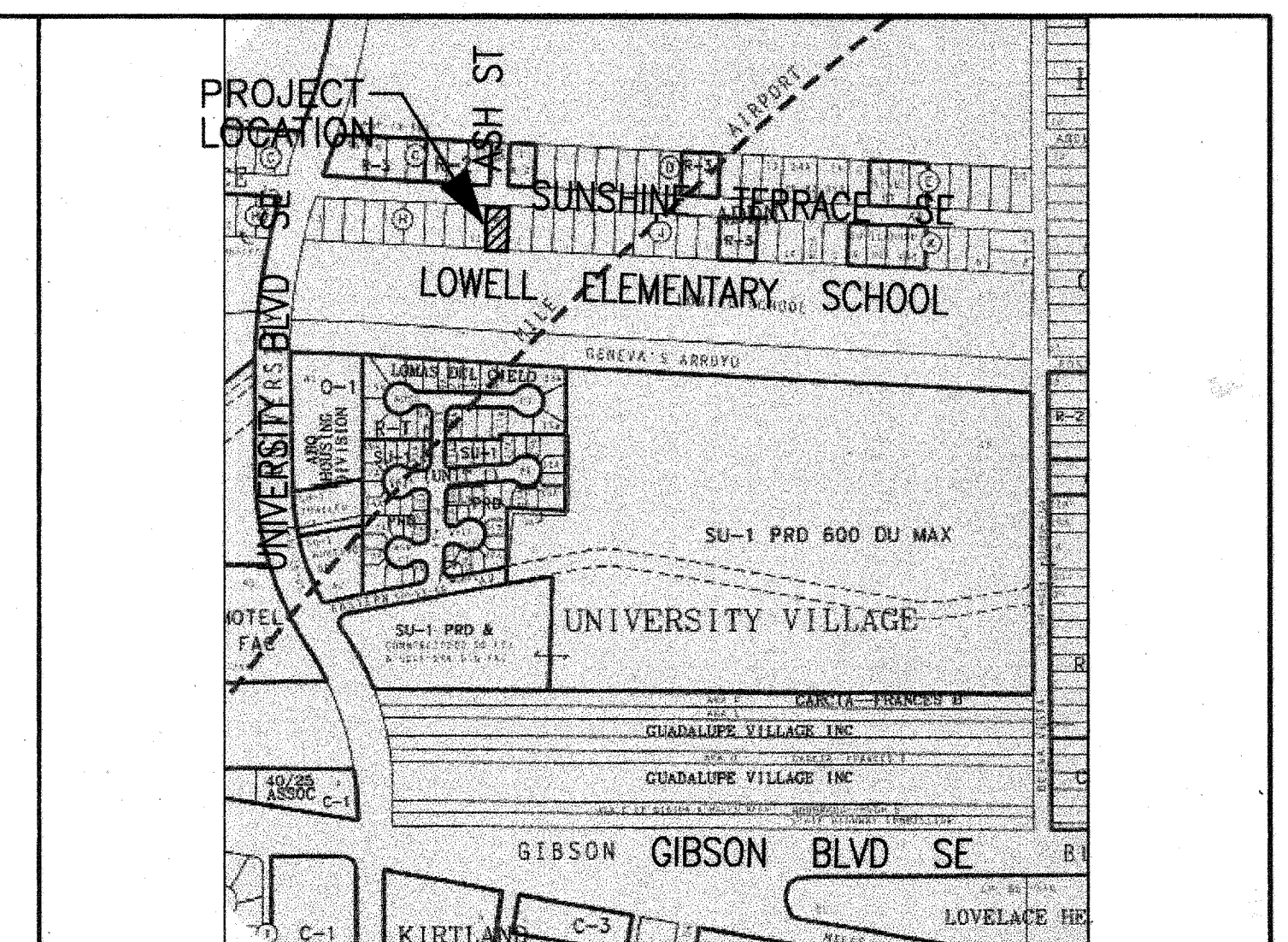
JEFFREY G. MORTENSEN, NMPE 8547

DATE

05.13.2008

APPROVED AS RECORD DRAWINGS  
DESIGN REVIEW SECTION  
CITY ENGINEER  
Anthony G. Gentry  
DATE: 07/02/08

DRB - n/a



VICINITY MAP (L-15)

GENERAL NOTES  
NOTICE TO CONTRACTORS

- ALL WORK DETAILED ON THESE PLANS TO BE PERFORMED UNDER CONTRACT SHALL, EXCEPT AS OTHERWISE STATED OR PROVIDED FOR HEREON, BE CONSTRUCTED IN ACCORDANCE WITH THE CITY OF ALBUQUERQUE STANDARD SPECIFICATIONS FOR PUBLIC WORKS CONSTRUCTION, 1986 EDITION AS REVISED THROUGH UPDATE #7.
- TWO WORKING DAYS PRIOR TO ANY EXCAVATION, CONTRACTOR MUST CONTACT NEW MEXICO ONE CALL SYSTEM (260-1990) AND DETERMINE LOCATION OF EXISTING UTILITIES.
- PRIOR TO ANY CONSTRUCTION, THE CONTRACTOR SHALL EXCAVATE AND VERIFY THE HORIZONTAL AND VERTICAL LOCATIONS OF ALL OBSTRUCTION. SHOULD A CONFLICT EXIST, THE CONTRACTOR SHALL NOTIFY THE ENGINEER OR THE SURVEYOR SO THAT THE CONFLICT CAN BE RESOLVED WITHOUT DELAY.
- ALL EXISTING SIGNS, MARKERS, DELINEATORS, ETC. WITHIN THE CONSTRUCTION LIMITS SHALL BE REMOVED, STORED AND RE-SET BY THE CONTRACTOR.
- CONTRACTOR SHALL NOTIFY THE ENGINEER NOT LESS THAN SEVEN (7) DAYS PRIOR TO STARTING WORK IN ORDER THAT THE ENGINEER MAY TAKE NECESSARY MEASURES TO INSURE THE PRESERVATION OF SURVEY MONUMENTS. CONTRACTOR SHALL NOT DISTURB PERMANENT SURVEY MONUMENTS WITHOUT THE CONSENT OF THE ENGINEER AND SHALL NOTIFY THE ENGINEER AND BEAR THE EXPENSE OF REPLACING ANY THAT MAY BE DISTURBED WITHOUT PERMISSION. REPLACEMENT SHALL BE DONE ONLY BY THE CITY SURVEYOR. WHEN A CHANGE IS MADE IN THE FINISHED ELEVATIONS OF ANY ROADWAY IN WHICH A PERMANENT SURVEY MONUMENT IS LOCATED, CONTRACTOR SHALL, AT HIS OWN EXPENSE, ADJUST THE MONUMENT COVER TO THE NEW GRADE UNLESS OTHERWISE SPECIFIED. REFER TO SECTION 4.4 OF THE GENERAL CONDITIONS OF THE STANDARD SPECIFICATIONS.
- FIVE (5) WORKING DAYS PRIOR TO BEGINNING CONSTRUCTION, THE CONTRACTOR SHALL SUBMIT TO CONSTRUCTION COORDINATION DIVISION A DETAILED CONSTRUCTION SCHEDULE. TWO (2) WORKING DAYS PRIOR TO THE START OF CONSTRUCTION, THE CONTRACTOR SHALL OBTAIN A BARRICADING PERMIT FROM THE CONSTRUCTION COORDINATION DIVISION; CONTRACTOR SHALL NOTIFY THE CONSTRUCTION COORDINATION ENGINEER (924-3400) PRIOR TO OCCUPYING AN INTERSECTION. REFER TO SECTION 19 OF THE GENERAL CONDITIONS OF THE STANDARD SPECIFICATIONS.
- THE CONTRACTOR SHALL COORDINATE WITH WATER SYSTEMS DIVISION (857-8200) SEVEN (7) WORKING DAYS PRIOR TO ANY WORK WHICH MAY AFFECT THE EXISTING CITY PUBLIC WATER OR SEWER UTILITIES. CONTRACTOR SHALL BE RESPONSIBLE FOR TIMING AND COORDINATION OF WATER SHUTOFF. EXISTING CITY VALVES TO BE OPERATED BY CITY PERSONNEL ONLY. REFER TO SECTION 18 OF THE STANDARD SPECIFICATIONS.
- THE CONTRACTOR WILL BE RESPONSIBLE FOR DISPOSING OF ALL DEBRIS, INCLUDING, NOT LIMITED TO HAZARDOUS WASTE AT DISPOSAL SITES APPROVED BY GOVERNMENTAL AGENCIES REGULATING THE DISPOSAL OF SUCH MATERIALS.
- TACK COAT FOR SURFACE COURSE REQUIREMENTS WILL BE DETERMINED BY THE ENGINEER.
- PERMANENT PAVEMENT STRIPING AND MARKINGS WILL BE PLACED BY THE CONTRACTOR. THE ROAD SHALL NOT BE OPENED TO THE TRAFFIC UNTIL IT IS STRIPED. ALL STRIPING, PAVEMENT MARKINGS INCLUDING CROSSWALKS, ARROWS AND LINE MARKINGS ARE TO BE CONSTRUCTED OF HOT PLASTIC OR COLD PLASTIC IN ACCORDANCE WITH THE MANUAL OF UNIFORM TRAFFIC CONTROL DEVICES.
- CONTRACTOR SHALL MAINTAIN A GRAFFITI-FREE WORK SITE. CONTRACTOR SHALL PROMPTLY REMOVE ANY AND ALL GRAFFITI FROM EQUIPMENT, WHETHER PERMANENT OR TEMPORARY.
- ALL WATER VALVE BOXES, MANHOLES IN THE STREET CONSTRUCTION ARE TO BE ADJUSTED TO FINISH GRADE AND WILL BE MEASURED AND PAID PER EACH.
- CONTRACTOR WILL BE RESPONSIBLE FOR PROVIDING AND MAINTAINING ALL CONSTRUCTION SIGNING UNTIL PROJECT HAS BEEN ACCEPTED BY THE CITY.

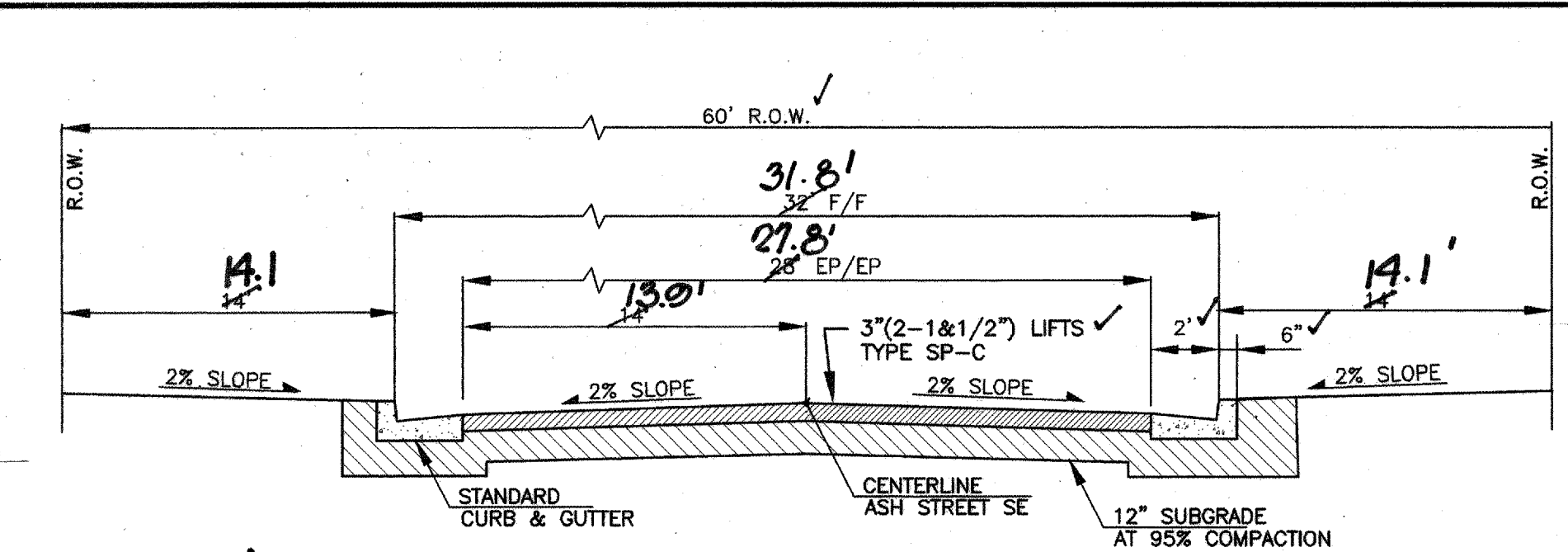
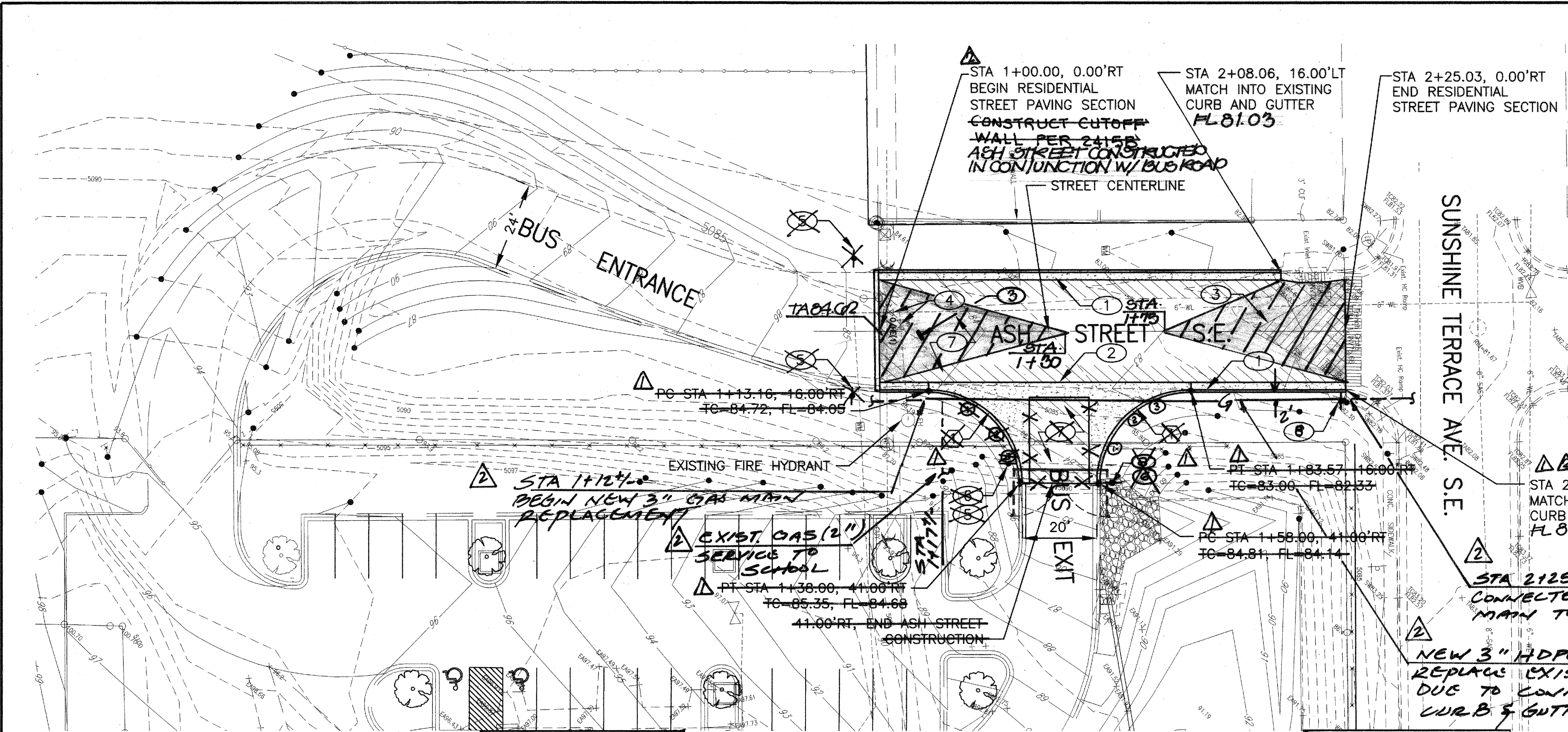
APPLIED Engineering & Surveying, Inc.  
1805 BLAIR DRIVE NE  
ALBUQUERQUE, NEW MEXICO 87112  
PHONE (505)237-1456

HMCg No. 2000.187.2

REV.	SHEETS	CITY ENGINEER	DATE	USER DEPARTMENT	DATE	USER DEPARTMENT	DATE
1	2		8/20/07				
2	1-2		4/20/08				
ENGINEERS STAMP & SIGNATURE		APPROVALS		ENGINEER		*****	
		DRC Chairman		Stephen Woodhall		7/12/07	
		Transportation		M. J.		7/2/07	
		Water/Wastewater		William G. Badach		7/2/07	
		Hydrology		J. J.		7-2-07	
		Parks					
Constr. Mngmt.							
CITY PROJECT No.		790081		Sheet		Of	
				1		2	

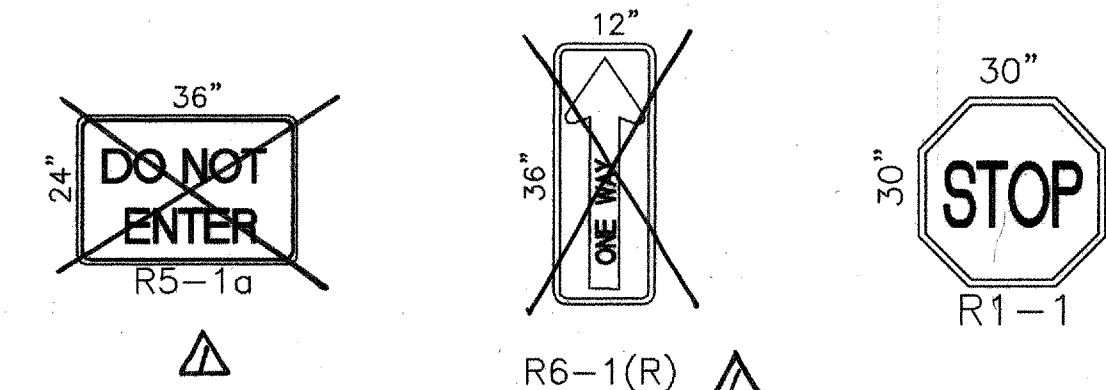
APPROVED FOR CONSTRUCTION  
City Engineer  
Date: 8-27-07





**CURVE TABLE AT FACE OF CURB**

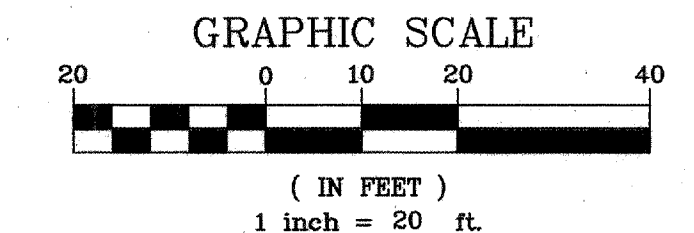
NUMBER	RADIUS	DELTA	ARC	TAN
1	25	90°00'00"	39.27	25.00



**R-VALUE SUBGRADE NOTE:**  
R VALUE IN ROADWAY FOR SUBGRADE MATERIAL MUST BE GREATER THAN 50. IF NOT THE CONTRACTOR SHALL REMOVE UNSUITABLE SUBGRADE MATERIAL AND IMPORT SUITABLE FILL MATERIAL TO A DEPTH OF 24" AND TO EXCEED AN R VALUE OF 50.

**CONSTRUCTION NOTES:**

1. CONSTRUCT STANDARD CURB & GUTTER PER COA STD. DWG. 2415A.
2. CONSTRUCT 6" WIDE CONCRETE VALLEY GUTTER PER COA STD. DWG. 2420.
3. PROVIDE CROWN TRANSITION PER CITY STD. DWG. 2401.
4. ADJUST EXISTING VALVE BOXES TO FINAL GRADE. ~~NOT REQUIRED. VALVES NOT FOUND IN FIELD.~~
5. INSTALL ONE WAY SIGN AND POST PER DETAIL R6-1(R).
6. INSTALL DO NOT ENTER SIGN AND POST PER DETAIL.
7. PROVIDE ASPHALT PAVING PER TYPICAL RESIDENTIAL STREET PAVING SECTION SHOWN ON THIS SHEET.
8. INSTALL STOP SIGN AND POST PER DETAIL.



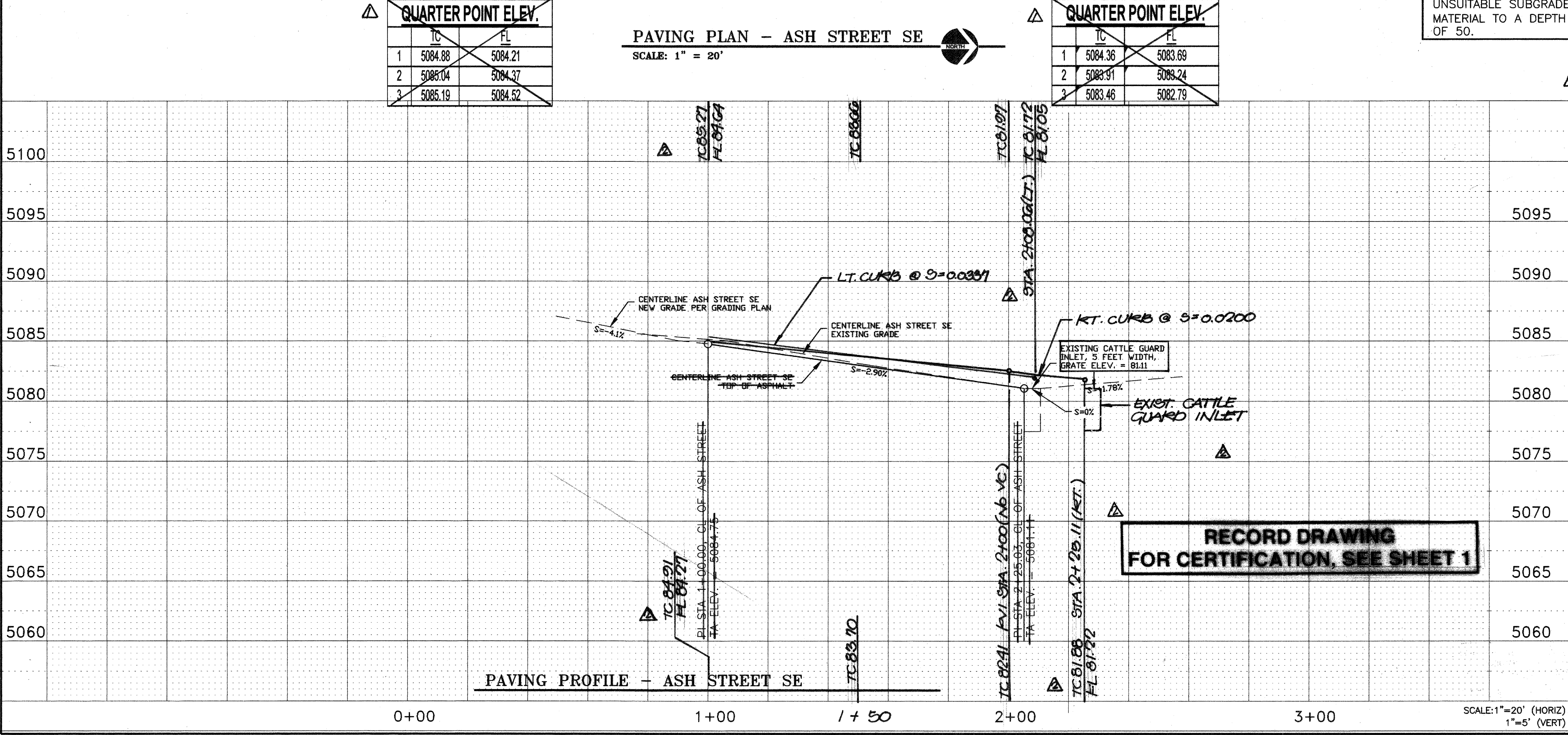
APPLIED ENGINEERING AND SURVEYING, INC.  
ENGINEERS AND PLANNERS  
1000 Star Drive NE  
Albuquerque, NM 87112  
Phone: (505) 271-1400

CITY OF ALBUQUERQUE  
PUBLIC WORKS DEPARTMENT  
ENGINEERING DEVELOPMENT GROUP

**TITLE: ASH STREET SE PAVING PLAN & PROFILE**

DESIGN REVIEW COMMITTEE	CITY ENGINEER APPROVAL	REVISIONS	DATE
APPROVED JUL 12 2007 DESIGN REVIEW COMMITTEE	APPROVED AUG 27 2007 CITY ENGINEER	1	

Zone Map No. 790081 Sheet 2 of 2



**RECORD DRAWING FOR CERTIFICATION, SEE SHEET 1**