

CONSTRUCTION PLANS
FOR
PUBLIC NON-POTABLE WATERLINE
AND PUBLIC GRADING & PAVING IMPROVEMENTS
ALBUQUERQUE, NEW MEXICO

AT 3021 UNIVERSITY BLVD. SE

INDEX

SHT DESCRIPTION

- 1 COVER SHEET, NOTES, VIC MAP
2 PAVING & NON-POTABLE WATER PLAN/PROFILE
FYI ALTA PLAT AND GRADING & DRAINAGE PLAN

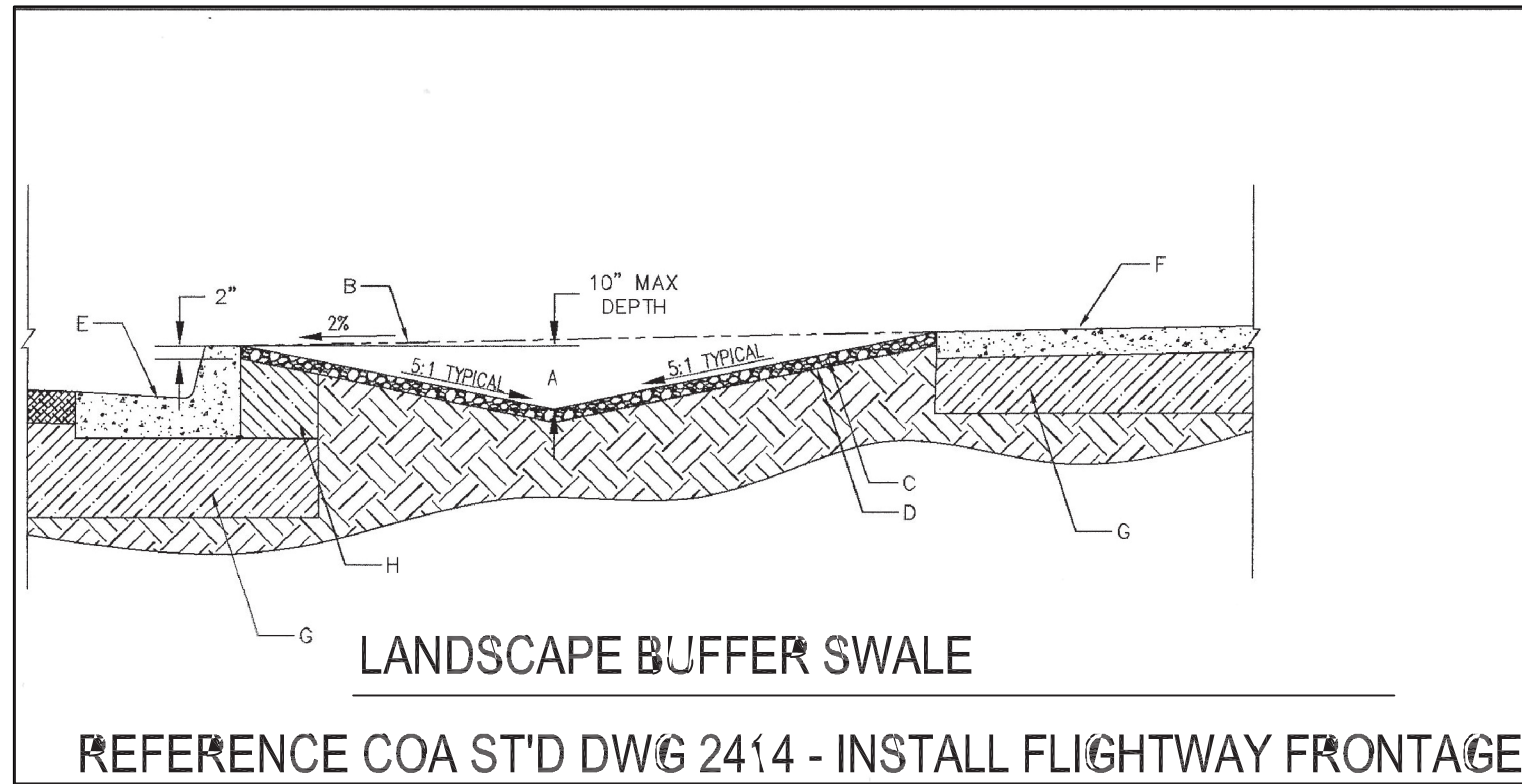
AUGUST 2022



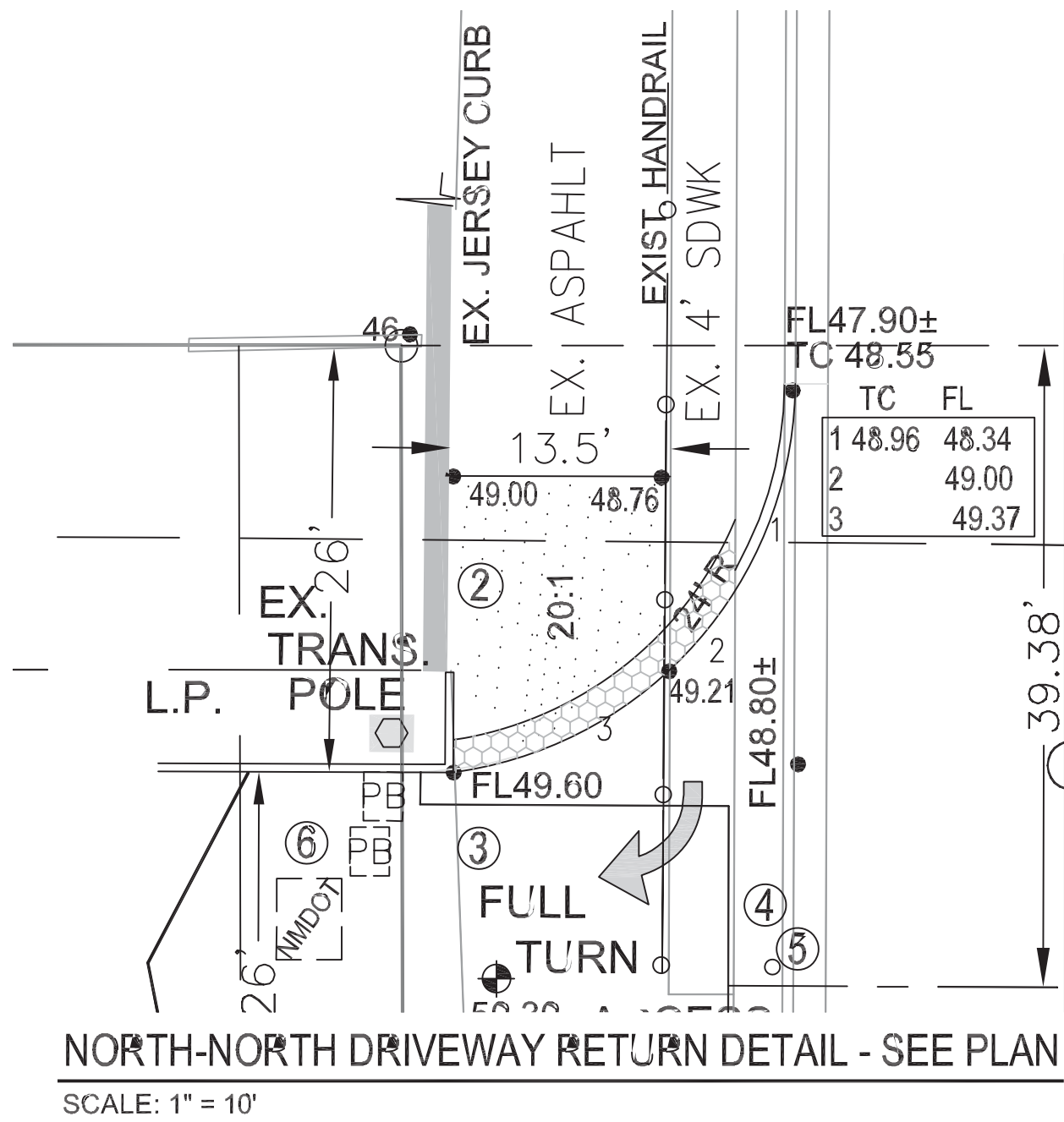
Clark Consulting Engineers
Edgewood, New Mexico 87015

REV.	SHEETS	CITY ENGINEER	DATE	USER DEPARTMENT	DATE	USER DEPARTMENT	DATE		
ENGINEERS STAMP & SIGNATURE		APPROVALS	ENGINEER	DATE	*****				
8/15/22		DRC Chairman	<i>Thomas Linde</i>	9/15/22	APPROVED FOR CONSTRUCTION				
		Transportation	<i>Mark PE</i>	8/24/2022					
		Water/Wastewater	<i>Randall Carroll</i>	9/14/2022		CITY ENGINEER	9/20/2022		
		Hydrology	<i>Ron C Bonnette</i>	08/24/22					
		Parks							
DRB PROJ. NUMBER	2020-003199	Const. Mngmt.			SHEET 1 OF 2				
		Const. Coord.							
		NMUI							
CITY PROJECT NO.		795682							

190913 (Ref W/S Avail)

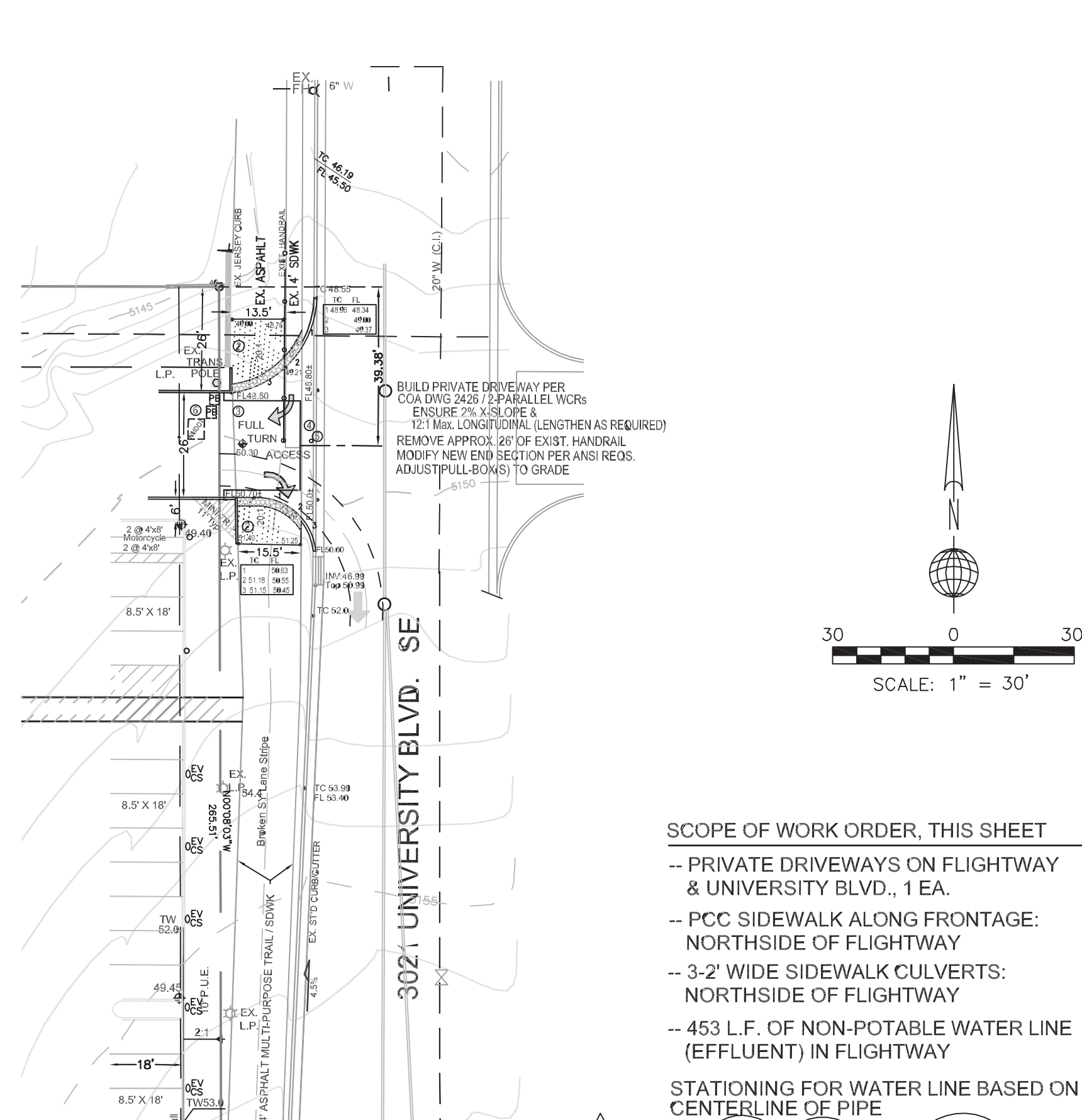


- GENERAL NOTES**
- THE LANDSCAPE AREA BETWEEN THE SIDEWALK AND BACK OF CURB SHALL BE DEPRESSED AND COVERED IN ROCK TO PREVENT EROSION.
 - LANDSCAPE BUFFERS 2 FEET AND LESS IN WIDTH ARE NOT REQUIRED TO BE DEPRESSED AND COVERED IN ROCK.
 - CHECK DMS ARE REQUIRED FOR SWALES ON LONGITUDINAL SLOPES 2.25% AND GREATER. THE ENGINEER WILL DETERMINE THE LOCATION.
- CONSTRUCTION NOTES**
- FOR LANDSCAPE BUFFERS GREATER THAN 10 FEET WIDE THE MAXIMUM DEPTH SHALL BE 10 INCHES.
 - 2% PROJECTED SLOPE FROM BACK OF CURB TO EDGE OF SIDEWALK.
 - SURFACE BETWEEN BACK OF CURB AND SIDEWALK SHALL BE COVERED WITH ANGULAR GRAVEL MULCH (MINIMUM SIZE 3/4"), COBBLES, OR RIPRAP.
 - FILTER FABRIC IS RECOMMENDED, BUT NOT REQUIRED. IF USED, FILTER FABRIC SHALL FOLLOW SECTION 603 OF THE SPECS.
 - CURB AND GUTTER PER PLAN.
 - SIDEWALK PER PLAN.
 - MIN 12" COMPACTED SUBGRADE.
 - COMPACT SUBGRADE 12" BEHIND CURB.



LOT 3-A-2-A
BLOCK 1
SUNPORT PARK

HOTEL 2 SUITES UNDER CONSTRUCTION

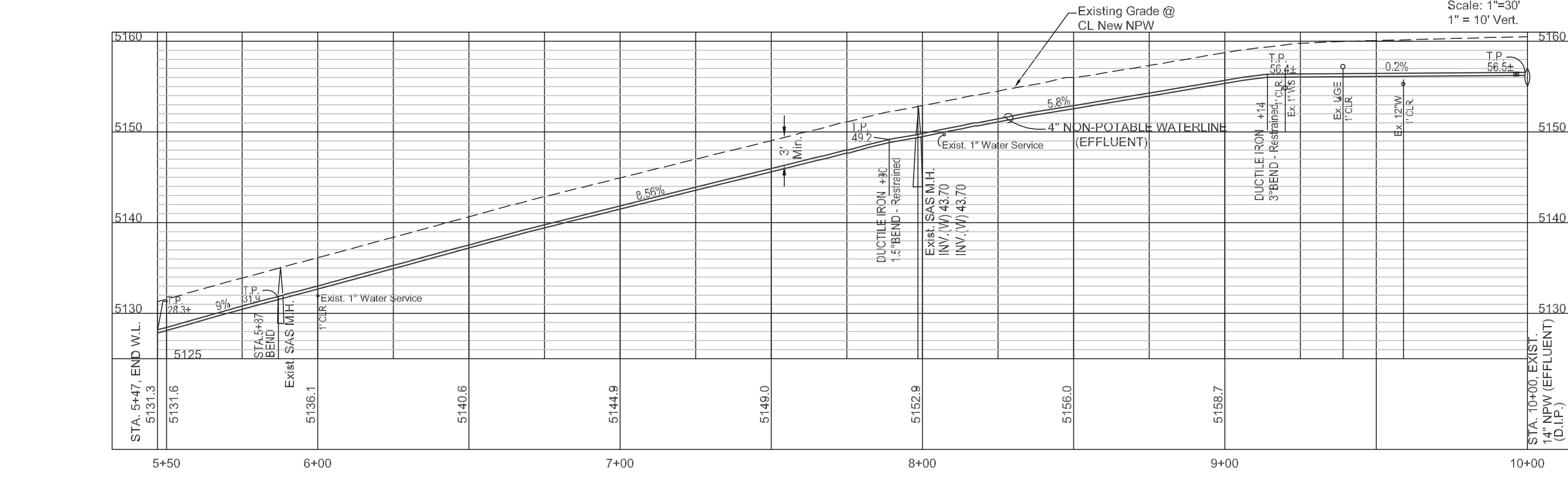
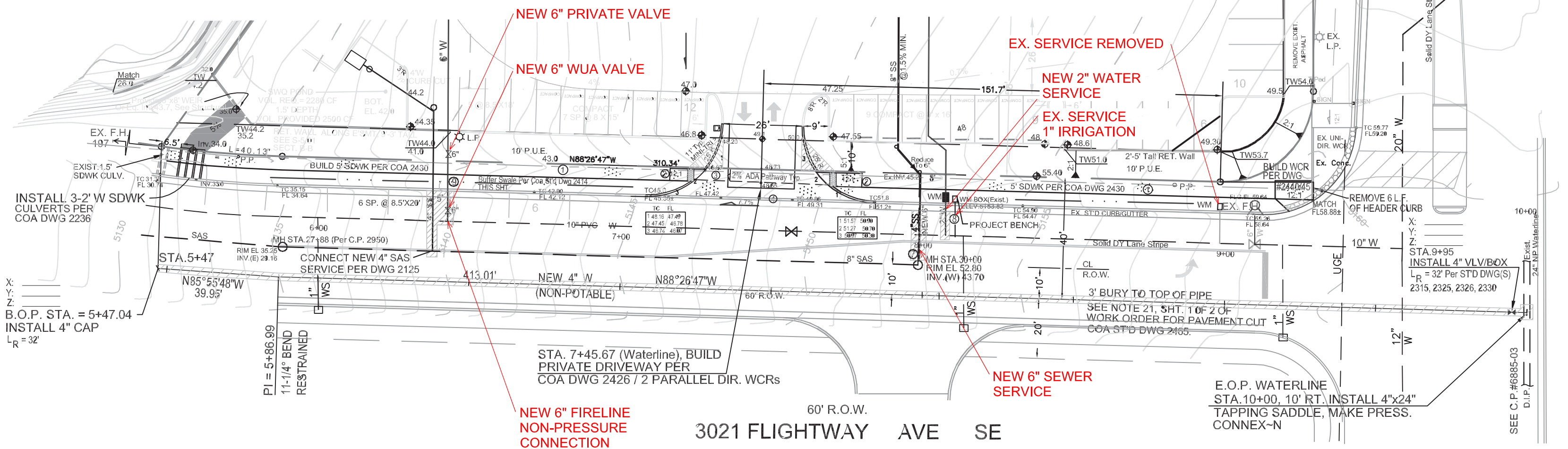


SCOPE OF WORK ORDER, THIS SHEET

- PRIVATE DRIVEWAYS ON FLIGHTWAY & UNIVERSITY BLVD., 1 EA.
- PCC SIDEWALK ALONG FRONTAGE: NORTHSIDE OF FLIGHTWAY
- 3-2" WIDE SIDEWALK CULVERTS: NORTHSIDE OF FLIGHTWAY
- 453 L.F. OF NON-POTABLE WATER LINE (EFFLUENT) IN FLIGHTWAY

STATIONING FOR WATER LINE BASED ON CENTERLINE OF PIPE

NOTE: ADDED UTILITY SERVICES AND 6" FIRE LINE IN FLIGHTWAY TO WORK ORDER, SEE KEYED NOTES 7, 8, AND 9.



NOTES

- ALL WORK WITHIN THE RIGHT-OF-WAY SHALL BE CONSTRUCTED IN ACCORDANCE WITH THE CITY OF ALBUQUERQUE STANDARD SPECS. FOR PUBLIC WORKS CONSTRUCTION, 2020 ADDITION.
- AN EXCAVATION/CONSTRUCTION PERMIT IS REQUIRED BEFORE BEGINNING ANY WORK WITHIN CITY R.O.W. AN APPROVED COPY OF THIS PLAN MUST BE SUBMITTED AT THE TIME OF APPLICATION.
- ALL WORK ON THIS PROJECT SHALL BE PERFORMED IN ACCORDANCE WITH APPLICABLE FEDERAL, STATE AND LOCAL LAWS, RULES, AND REGULATIONS CONCERNING CONSTRUCTION SAFETY AND HEALTH.
- REVEGETATE ALL AREAS DISTURBED DUE TO CONSTRUCTION PER CITY OF ALBUQ. SPEC. 1012, NATIVE SEED MIX.
- REMOVE/REPLACE PAVEMENT PER COA STD DWG 2465.
- SAW CUT 1" NEAT LINE ALONG ABUTTING EXISTING PAVEMENT. SEE GEN. NOTES 36 & 37.
- COORDINATES ARE STATE PLANE, CENTRAL ZONE NAD 83 AND NAVD 88.

7-DAYS PRIOR TO START

CONTRACTOR SHALL TEST SUBGRADE R-VALUE PRIOR TO PAVEMENT CONSTRUCTION - IF LESS THAN 50, SHALL OVER EXCAVATE 2" AND REPLACE W/ACCEPTABLE MATERIAL, AND/OR CONTACT THE PROJECT ENGINEER.

KEYED NOTE(S)

- NEW PCC SDWK PER COA STD 2430.
- NEW PARALLEL RAMPS PER DWG 2426, & DETECTABLE WARNING SURFACES PER DWG 2446
- PROVIDE 4' WIDE ADA PATHWAY, 2% MAX. CROSS SLOPE.
- REMOVE STD CURB & GUTTER, AND SIDEWALK PER CITY GENERAL NOTES / SPECIFICATIONS.
- RELOCATE EXISTING SPEED LIMIT SIGN PER CITY INSPECTOR.
- RELOCATE PULL BOXES (3) OUTSIDE OF DRIVEWAY.
- CONNECT NEW 6" SANITARY SEWER SERVICE TO EXISTING MANHOLE PER COA DWG 2118. INSTALL LINE PER DWG 2125. REMOVE EXIST. 4" SS.
- INSTALL 2" WATER SERVICE PER DWG 2363 AND METER BOX PER DWG 2367.
- CONNECT NEW 6" FIRELINE TO EXISTING 10" WATER LINE PER DWG 2301; 6" VLV/BOX PER DWG 2326; FIRE LINE RING & COVER PER 2329.

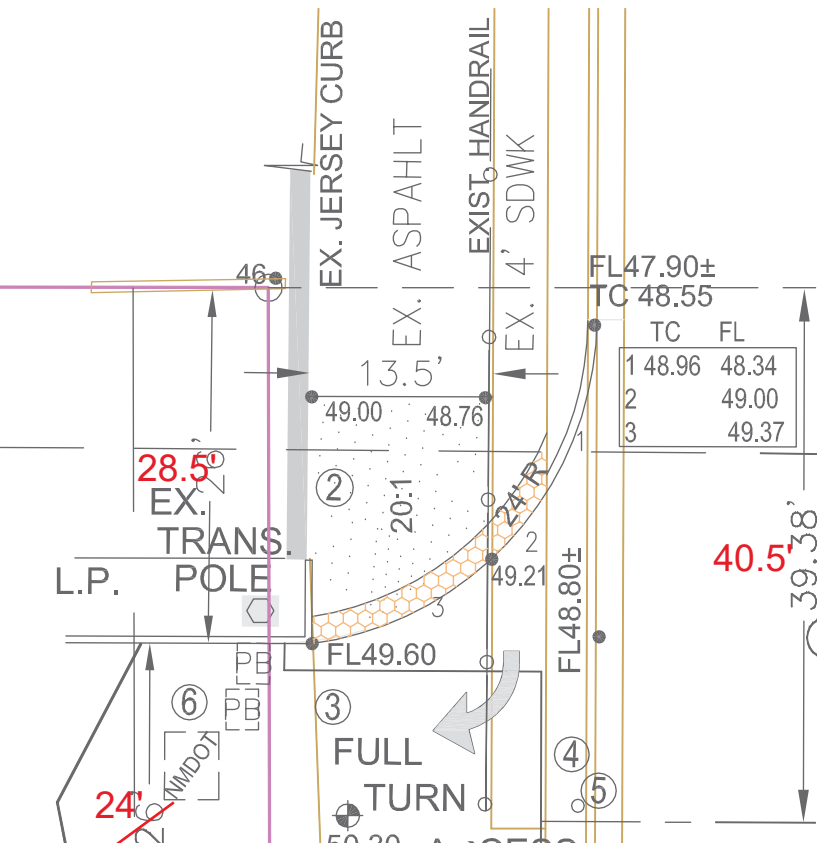
LEGEND

- 24.0 NEW SPOT ELEVATION
- W EXIST. EDGE OF ROAD
- NPW NEW WATER LINE
- NPW NON-POTABLE WATER
- BC DRAINAGE DIRECTION
- EA BACK OF CURB
- EA EDGE OF ASPHALT
- PP EXISTING POWER POLE
- FH EXIST. FIRE HYDRANT
- NEW P.C.C. CONCRETE
- NEW GATE VALVE (DUCTILE IRON) RESTRAINED
- L_R RESTRAINED - LENGTH

Clark Consulting Engineers
Edgewood, New Mexico 87015
Tel: (505) 281-2444

CITY OF ALBUQUERQUE PLANNING DEPARTMENT ENGINEERING DESIGN REVIEW / CONSTRUCTION	
PAVING & NON-POTABLE WATER PLAN/PROFILE H2 SUITES HOTEL - 3021 UNIVERSITY BLVD, SE	
Design Review Committee APPROVED Oct. 12, 2022 DESIGN REVIEW COMMITTEE	City Engineer Approval APPROVED Oct. 12, 2022 CITY ENGINEER
City Project No. 795682	Zone Map No. M-15
SHEET 2R OF 2	

RECORD DRAWING



NORTH-NORTH DRIVEWAY RETURN DETAIL - SEE PLAN

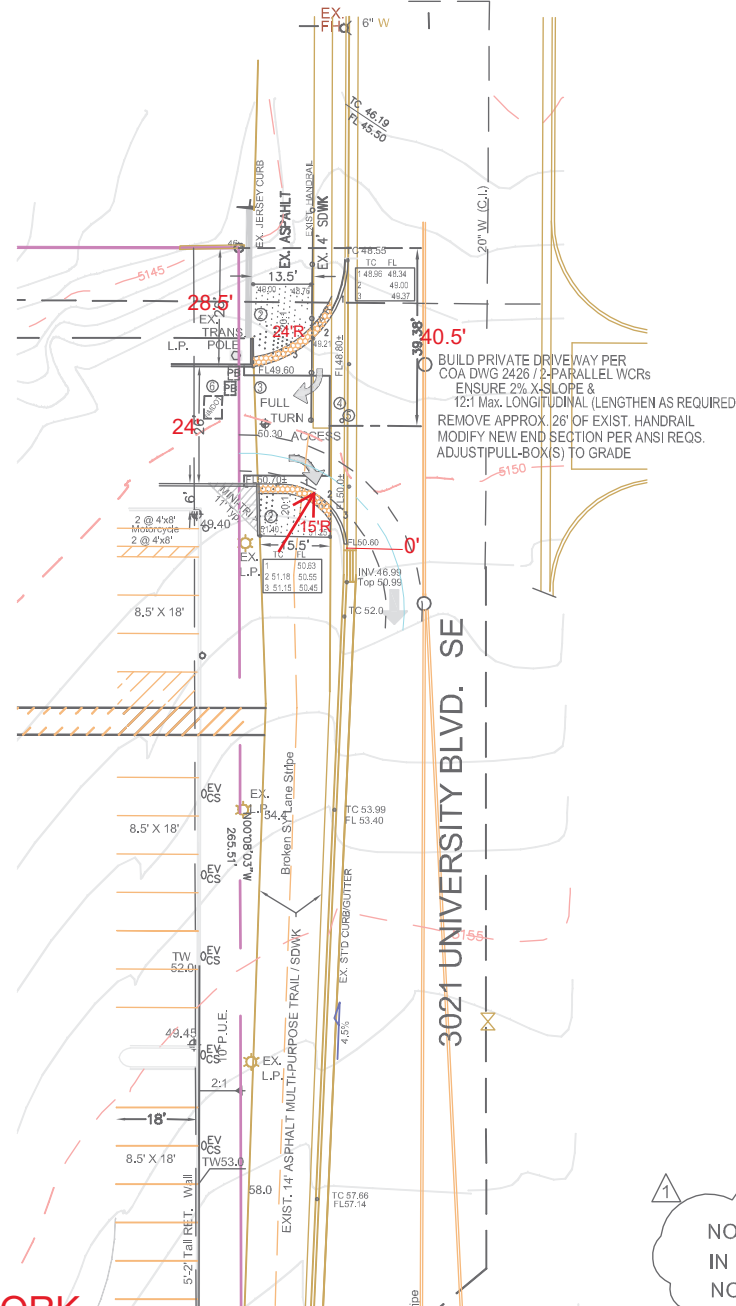
SCALE: 1" = 10'

LOT 3-A-2-A
BLOCK 1
SUNPORT PARK

HOTEL 2 SUITES UNDER CONSTRUCTION

ADDENDUM #1

REFERENCE SHT 2 OF WORK
ORDER, CPN 795682 - DATED 10/12/22



SCOPE OF WORK ORDER, THIS SHEET

- PRIVATE DRIVEWAYS ON FLIGHTWAY & UNIVERSITY BLVD., 1 EA.
- PCC SIDEWALK ALONG FRONTAGE: NORTHSIDE OF FLIGHTWAY
- 3-2' WIDE SIDEWALK CULVERTS: NORTHSIDE OF FLIGHTWAY
- 453 L.F. OF NON-POTABLE WATER LINE (EFFLUENT) IN FLIGHTWAY

STATIONING FOR WATER LINE BASED ON CENTERLINE OF PIPE

NOTE: ADDED UTILITY SERVICES AND 6" FIRE LINE IN FLIGHTWAY TO WORK ORDER, SEE KEYED NOTES 7,8, AND 9.

6/16/23

NOTES

1. AS-BUILT SURVEY PERFORMED IN AUGUST & SEPTEMBER 2023.
2. STATE PLANE COORDINATES REFERENCED TO NAD 83 NEW MEXICO CENTRAL ZONE.

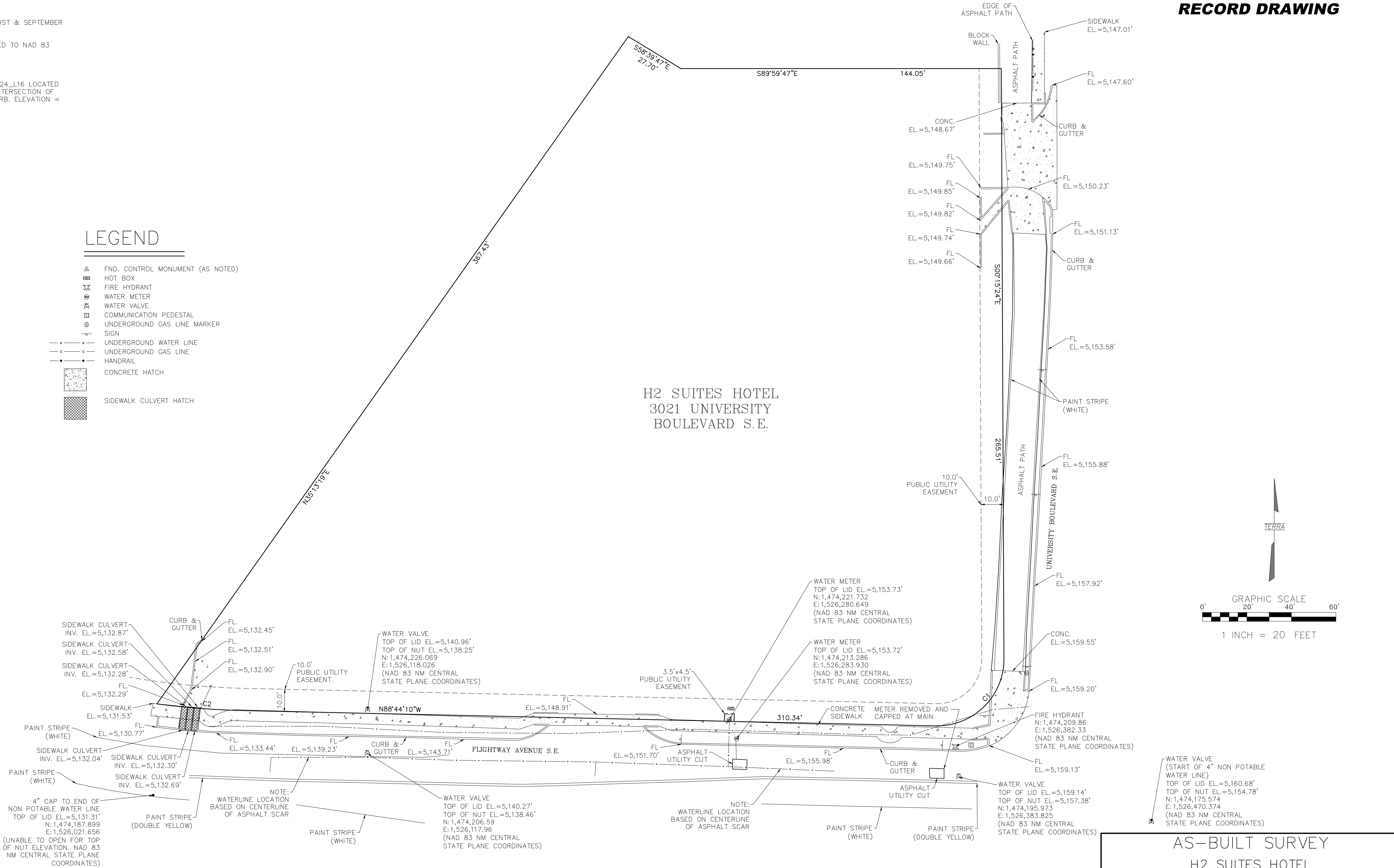
ACS BENCHMARK USED

PROJECT BENCHMARK IS ACS MONUMENT 24_L16 LOCATED AT THE NORTHEAST QUADRANT OF THE INTERSECTION OF GIBSON AND YALE. SET FLUSH IN THE CURB. ELEVATION = 5,191.306 FEET.

LEGEND

- △ FND. CONTROL MONUMENT (AS NOTED)
- ☐ HOT BOX
- ⊗ FIRE HYDRANT
- ⊙ WATER METER
- ⊕ WATER VALVE
- ⊞ COMMUNICATION PEDESTAL
- ⊘ UNDERGROUND GAS LINE MARKER
- v—v—v— UNDERGROUND WATER LINE
- o—o—o— UNDERGROUND GAS LINE
- HANDRAIL
- CONCRETE HATCH
- SIDEWALK CULVERT HATCH

RECORD DRAWING

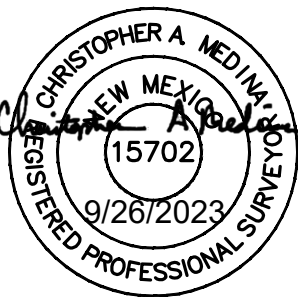


SURVEYOR'S CERTIFICATE

I, CHRISTOPHER A. MEDINA, N.M.P.L.S. NO. 15702, DO HEREBY CERTIFY THAT THE AS-BUILT INFORMATION SHOWN AND THE ACTUAL SURVEY WHICH IT WAS DERIVED FROM WAS PERFORMED BY ME OR UNDER MY DIRECT SUPERVISION; THAT THIS AS-BUILT SURVEY WAS PERFORMED IN THE MONTH OF SEPTEMBER 2023; AND THAT THE INFORMATION SHOWN IS TRUE AND CORRECT TO THE BEST OF MY KNOWLEDGE AND BELIEF AND THAT IT MEETS ALL REQUIREMENTS LISTED UNDER THE STANDARD DRAWINGS AND STANDARD SPECIFICATIONS FOR SURVEYING.

Christopher A. Medina
CHRISTOPHER A. MEDINA, NMPLS NO. 15702

SEPT. 26, 2023
DATE



CURVE TABLE					
CURVE	RADIUS	ARC LENGTH	CHORD LENGTH	CHORD BEARING	DELTA ANGLE
C1	30.00'	47.92'	42.99'	S45°30'13"W	91°31'14"
C2	1370.00'	40.02'	40.00'	N85°38'16"W	6°11'49"

AS-BUILT SURVEY
H2 SUITES HOTEL
ALBUQUERQUE, NEW MEXICO

TERRA LAND SURVEYS, LLC

P.O. BOX 2532 • CORRALES, NM 87048 • (505) 792-0513

DRAWN BY: PHF	PROJECT NO.: 2023-040	
CHECKED BY: CAM	DATE: SEPTEMBER 2023	SHEET 1 OF 1