



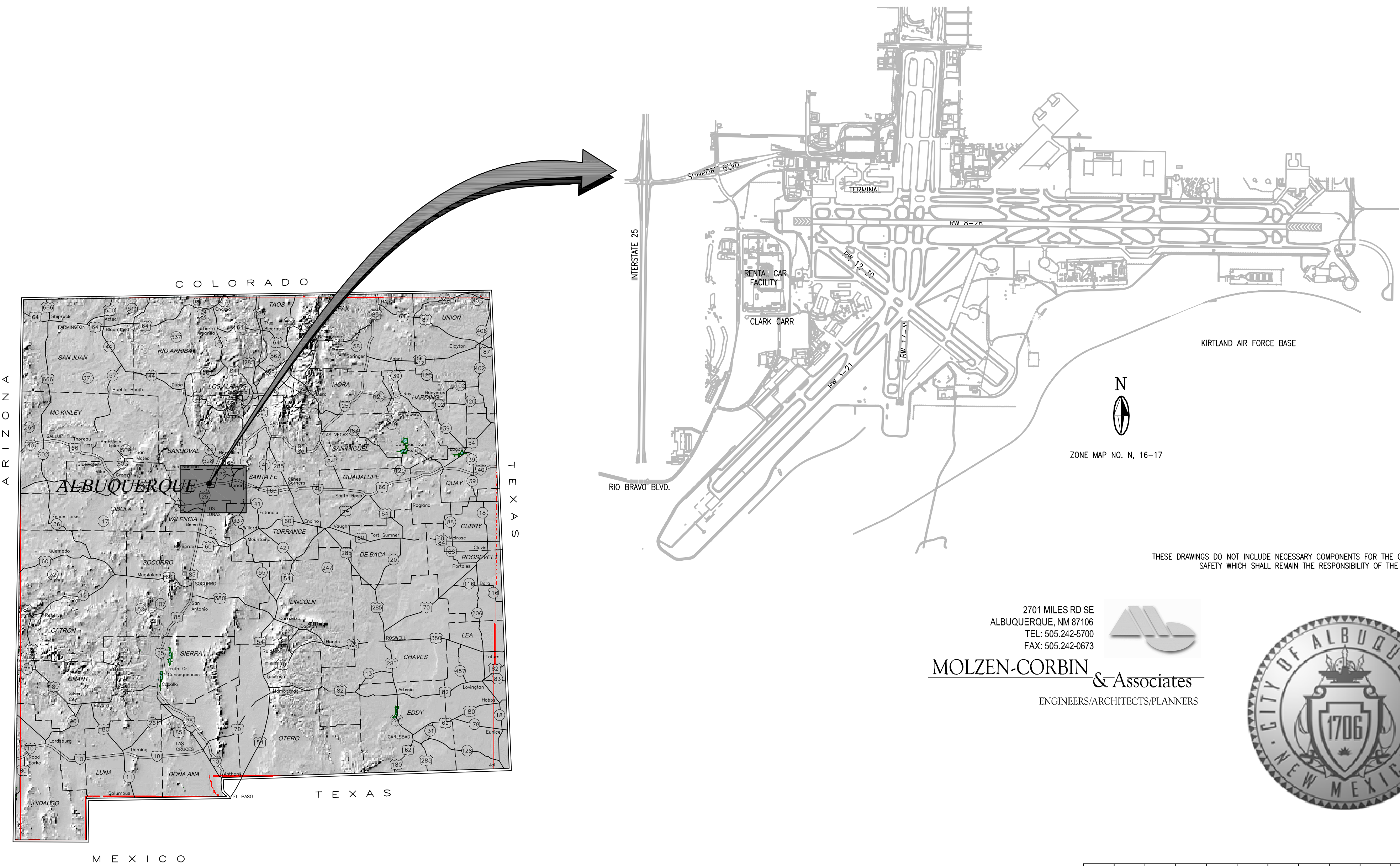
CITY OF ALBUQUERQUE AVIATION DEPARTMENT
PLANNING AND DEVELOPMENT
ALBUQUERQUE, NEW MEXICO

MARCH 2007
for the

ALBUQUERQUE INTERNATIONAL SUNPORT
RENTAL CAR FACILITY PARKING EXPANSION

2200 Sunport Blvd. S.E.
Albuquerque, New Mexico 87106

CIVIL ENGINEERS
Molzen-Corbin & Associates



CERTIFICATION:

I, JOHN M. PROVINE, REGISTERED
PROFESSIONAL ENGINEER NO. 10997
HEREBY CERTIFY THAT THE FOLLOWING PLANS AND
DESIGNS WERE MADE UNDER MY SUPERVISION
AND DIRECTION AND THAT SAME IS TRUE AND CORRECT
TO THE BEST OF MY KNOWLEDGE AND BELIEF

JOHN M. PROVINE, P.E. NO. 10997

RECORD DRAWING	
DATE: APRIL 2007	DRAWN BY: RLA
THESE RECORD DRAWINGS HAVE BEEN PREPARED IN PART, ON THE BASIS OF INFORMATION COMPILED AND FURNISHED BY OTHERS. MOLZEN-CORBIN AND ASSOCIATES WILL NOT BE RESPONSIBLE FOR ANY ERRORS OR OMISSIONS WHICH HAVE BEEN INCORPORATED INTO THIS DOCUMENT AS A RESULT.	

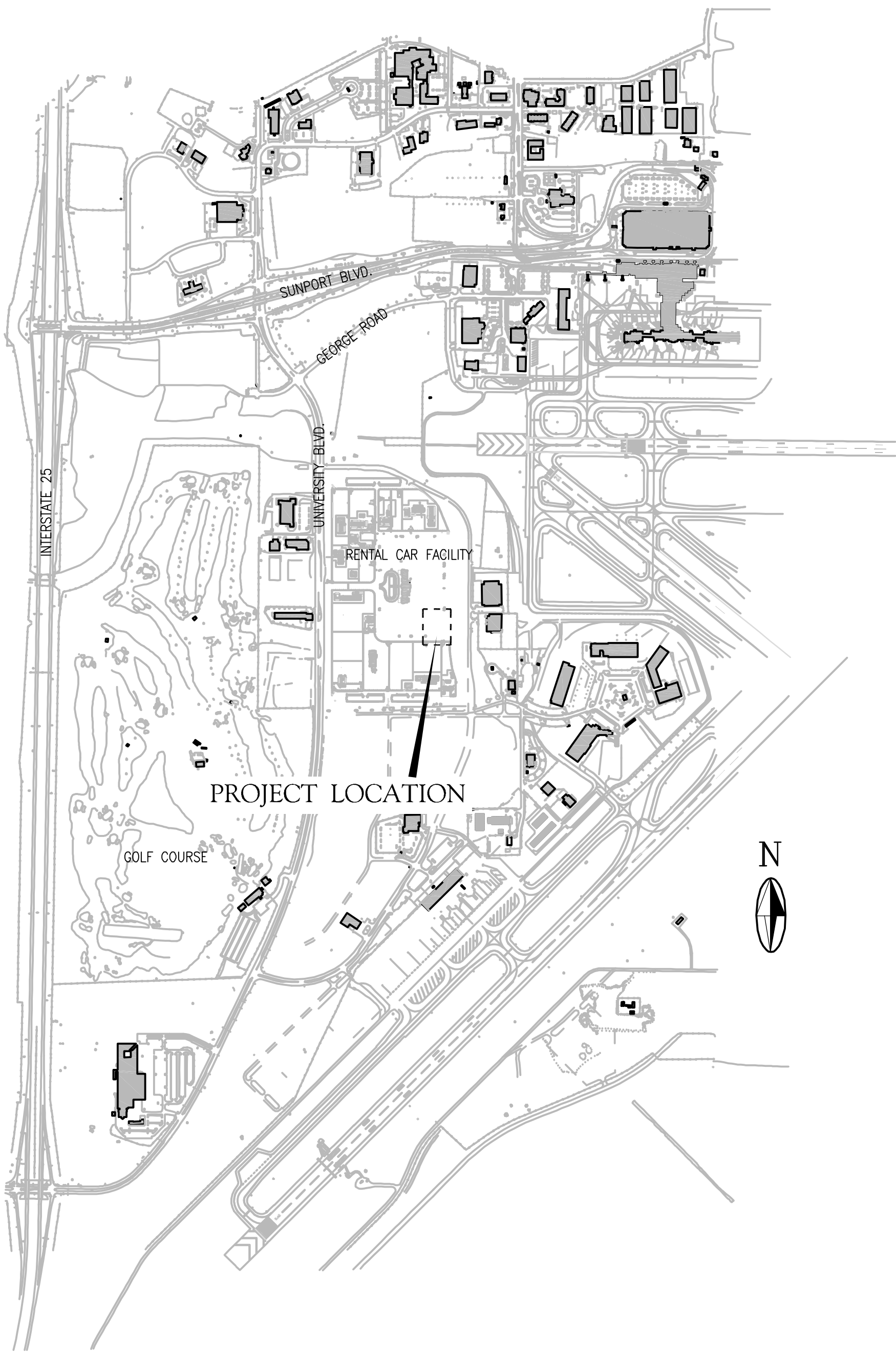
2701 MILES RD SE
ALBUQUERQUE, NM 87106
TEL: 505.242-6700
FAX: 505.242-0673

MOLZEN-CORBIN & Associates
ENGINEERS/ARCHITECTS/PLANNERS



REV.	SHEETS	CITY ENGINEER	DATE	USER DEPARTMENT	DATE	USER DEPARTMENT	DATE
		APPROVALS	ENGINEER	DATE	*****		
		DRC Chairman			APPROVED FOR CONSTRUCTION		
		Transportation					
		Water/Wastewater					
		Hydrology					
		Aviation					
		Constr. Mngnt.			City Engineer Date		
		City Project No.		7970.06		Sheet of 1/13	
						G-001	

2 6 - 7 9 7 0 . 0 6 - 0 7



VICINITY MAP

GENERAL NOTES

- ALL WORK DETAILED ON THESE PLANS EXCEPT AS OTHERWISE PROVIDED HEREON, SHALL BE CONSTRUCTED IN ACCORDANCE WITH THE CITY OF ALBUQUERQUE STANDARD SPECIFICATIONS FOR PUBLIC WORKS CONSTRUCTION, LATEST EDITION, OR AS MODIFIED BY THE PROJECT CONSTRUCTION CONTRACT DOCUMENTS AND SPECIFICATIONS, OR AS AMENDED BY SPECIAL PROVISION. THE STANDARD SPECIFICATIONS CONTAIN THE CITY OF ALBUQUERQUE STANDARD DRAWINGS.
- ALL WORK ON THIS PROJECT SHALL BE PERFORMED IN ACCORDANCE WITH APPLICABLE FEDERAL, STATE, AND LOCAL LAWS, RULES, AND REGULATIONS CONCERNING CONSTRUCTION SAFETY AND HEALTH. THESE DRAWINGS DO NOT INCLUDE NECESSARY COMPONENTS FOR CONSTRUCTION SAFETY WHICH SHALL REMAIN THE CONTRACTOR'S RESPONSIBILITY.
- THESE DRAWINGS REFLECT INFORMATION ON UTILITIES GATHERED BY SITE INSPECTION, DISCUSSIONS WITH MUNICIPAL OFFICIALS, AND UTILITY COMPANY CONSTRUCTION DRAWINGS. IT IS POSSIBLE THAT THE EXACT LOCATION OF LINES AND UTILITY CONNECTION POINTS IN THE VICINITY OF THE REQUIRED WORK MAY BE DIFFERENT FROM THE LOCATION SHOWN ON THESE DRAWINGS. PRIOR TO CONSTRUCTION THE CONTRACTOR SHALL EXCAVATE AND VERIFY THE HORIZONTAL AND VERTICAL LOCATIONS OF ALL UTILITY OBSTRUCTIONS. SHOULD A CONFLICT ARISE, THE CONTRACTOR SHALL NOTIFY THE ENGINEER SO THAT ANY CONFLICTS CAN BE RESOLVED WITH A MINIMUM AMOUNT OF DELAY.
- THE CONTRACTOR SHALL PROTECT AND MAINTAIN IN SERVICE ALL EXISTING UTILITIES. THE CONTRACTOR SHALL ADEQUATELY SUPPORT AND PROTECT EXISTING UTILITIES AFFECTED BY THE CONTRACTOR'S OPERATIONS. IN THE EVENT THAT EXISTING UTILITIES ARE DAMAGED BY THE CONTRACTOR'S OPERATIONS, THE CONTRACTOR SHALL ARRANGE FOR AND COORDINATE PROMPT REPAIR BY THE RESPECTIVE UTILITY AND SHALL BEAR THE COST OF THESE REPAIRS.
- FIVE (5) WORKING DAYS PRIOR TO ANY EXCAVATION, THE CONTRACTOR SHALL BE RESPONSIBLE FOR CONTACTING THE EXISTING UTILITY OWNERS FOR THE SPOTTING OF THESE EXISTING UTILITIES. THE CONTRACTOR SHALL ALSO CALL FOR RE-SPOTS AS NECESSARY TO KEEP UTILITY LOCATIONS CURRENT. OBTAIN ANY BOUNDARY PERMITS AS REQUIRED.
- WATER SYSTEM FACILITIES ARE OPERATED AND CONTROLLED BY THE CITY OF ALBUQUERQUE WATER SYSTEMS UTILITY DEPARTMENT. NOTIFY CITY OF ALBUQUERQUE WATER SYSTEMS UTILITY DEPARTMENT FIVE (5) WORKING DAYS IN ADVANCE OF ANY WORK AFFECTING OR REQUIRING SHUTOFFS OF WATER OR SEWER FACILITIES.
- THE CONTRACTOR SHALL BE RESPONSIBLE FOR OBTAINING ALL WATER NECESSARY FOR CONSTRUCTION. THE COSTS FOR WATER SHALL BE CONSIDERED INCIDENTAL TO COMPLETION OF THE PROJECT AND NO SEPARATE MEASUREMENT OR PAYMENT SHALL BE MADE THEREFOR.
- THE CONTRACTOR SHALL MAINTAIN AN UP TO DATE SET OF AS-BUILT PLANS FOR THIS PROJECT. THESE PLANS SHALL BE KEPT CURRENT, WITHIN ONE WEEK, AT ALL TIMES AND SHALL BE SUBJECT TO REVIEW BY THE PROJECT MANAGER THROUGHOUT THE PROJECT AND WILL BE REVIEWED BY THE PROJECT MANAGER FOR ACCURACY AND COMPLETENESS AT LEAST ONCE EVERY 30 DAYS. THE "FINAL" AS BUILT PLANS SHALL BE SUBMITTED TO THE PROJECT MANAGER PRIOR TO FINAL PAYMENT.
- WHEN ABUTTING NEW PAVEMENT TO EXISTING, SAW CUT EXISTING PAVEMENT TO A STRAIGHT LINE AS REQUIRED TO REMOVE ANY BROKEN OR CRACKED PAVEMENT AND MATCH NEW TO EXISTING.
- WHERE TRENCHING EXPOSES EXISTING UTILITY LINES, THE CONTRACTOR IS RESPONSIBLE FOR SUPPORTING THE LINE DURING CONSTRUCTION AND ASSURE THAT IT IS BACKFILLED AND COMPACTED IN ACCORDANCE WITH THE STANDARD SPECIFICATIONS.
- ANY AREA NOT PAVED OR LANDSCAPED WHICH IS DISTURBED DURING CONSTRUCTION SHALL BE SEEDED WITH NATIVE GRASS. THE COST OF SEEDING SHALL BE CONSIDERED INCIDENTAL TO THE WORK AND NO SEPARATE MEASUREMENT OR PAYMENT SHALL BE MADE THEREFOR. THIS INCLUDES ANY STAGING AREAS, AND PLANT SITES.
- ALL EXCAVATION, TRENCHING, AND SHORING ACTIVITIES MUST BE CARRIED-OUT IN ACCORDANCE WITH OSHA 29 CFR 1926.650 SUBPART P.

INDEX OF DRAWINGS

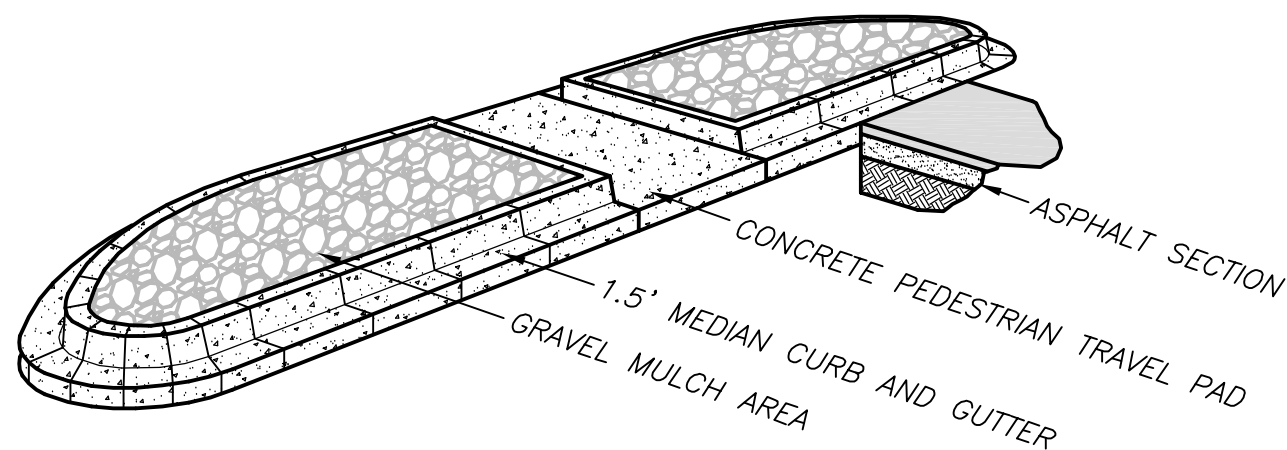
SEQUENCE	SHEET	DESCRIPTION
1	G-001	TITLE SHEET
2	G-002	PROJECT INFORMATION SHEET
3	C-101	SITE PLAN REMOVED FROM PROJECT (SEE C-301)
4	C-102	GEOMETRY LAYOUT/GRADING PLAN REMOVED FROM PROJECT (SEE C-302)
5	C-103	IRRIGATION UTILITY RELOCATION PLAN REMOVED FROM PROJECT (SEE C-303)
6	C-501	MISCELLANEOUS DETAILS
MEDIAN CURB AND GUTTER ALTERNATIVE		
7	C-201	SITE PLAN (MEDIAN CURB AND GUTTER ALTERNATIVE)
8	C-202	GEOMETRY LAYOUT/GRADING PLAN (MEDIAN CURB AND GUTTER ALTERNATIVE)
9	C-203	IRRIGATION UTILITY RELOCATION PLAN (MEDIAN CURB AND GUTTER ALTERNATIVE)
LARGER IMPROVEMENT AREA ALTERNATIVE		
10	C-301	SITE PLAN (LARGER IMPROVEMENT AREA ALTERNATIVE)
11	C-302	GEOMETRY LAYOUT/GRADING PLAN (LARGER IMPROVEMENT AREA ALTERNATIVE)
12	C-303	IRRIGATION UTILITY RELOCATION PLAN (LARGER IMPROVEMENT AREA ALTERNATIVE)
13	C-304	REVISED PARKING LAYOUT PLAN
14	E-301	ELECTRICAL LIGHTING PLAN (LARGER IMPROVEMENT AREA ALTERNATIVE)

2701 MILES RD SE
ALBUQUERQUE, NM 87106
TEL: 505.242-5700
FAX: 505.242-0673

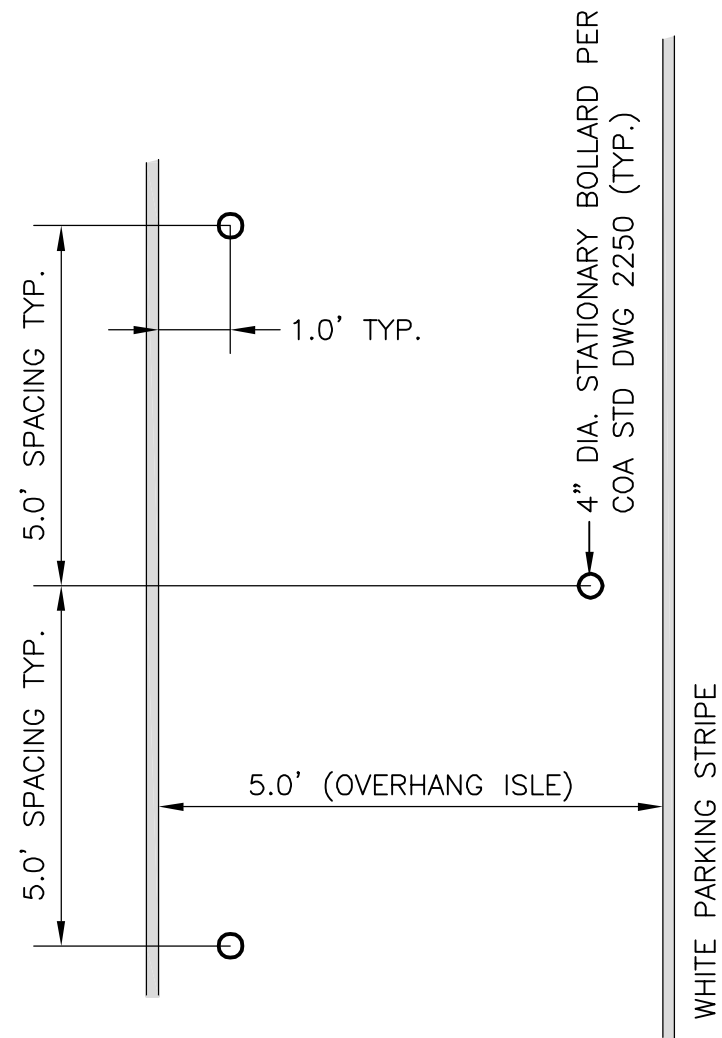

MOLZEN-CORBIN & Associates
ENGINEERS/ARCHITECTS/PLANNERS

RECORD DRAWING	
DATE: APRIL 2007	DRAWN BY: RLA
THESE RECORD DRAWINGS HAVE BEEN PREPARED, IN PART, ON THE BASIS ON INFORMATION COMPILED AND FURNISHED BY OTHERS. MOLZEN-CORBIN AND ASSOCIATES WILL NOT BE RESPONSIBLE FOR ANY ERRORS OR OMISSIONS WHICH HAVE BEEN INCORPORATED INTO THIS DOCUMENT AS A RESULT.	

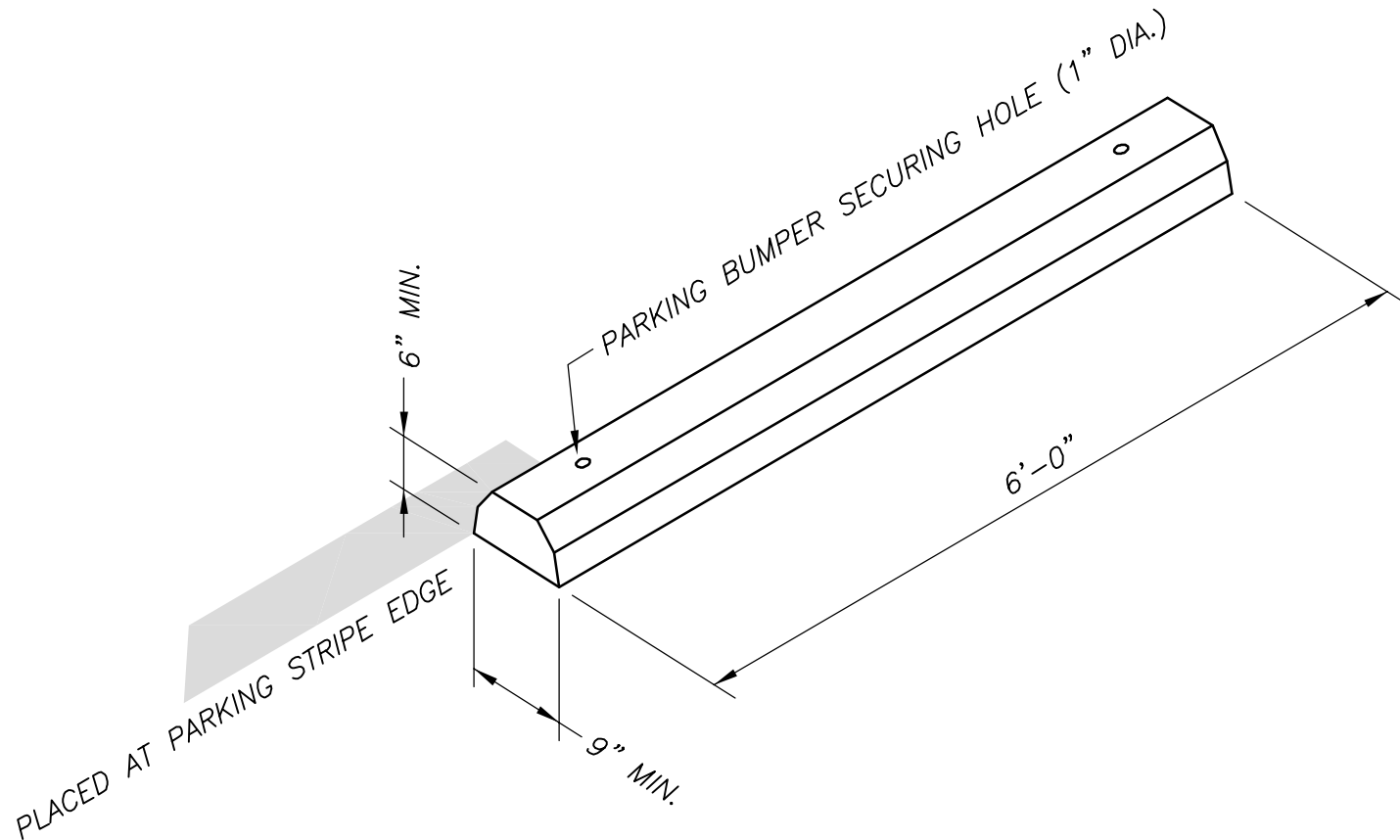
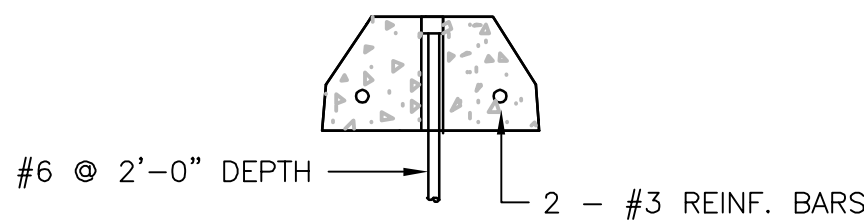
CITY OF ALBUQUERQUE PUBLIC WORKS DEPARTMENT ENGINEERING DEVELOPMENT GROUP			
TITLE: RENTAL CAR FACILITY - PARKING EXPANSION			
PROJECT INFORMATION SHEET			
Design Review Committee	City Engineer Approval	Last Design Update	Mo./Day/Yr.
City Project No. 7970.06		Zone Map No. N-16	Sheet G-002 Of 2 / 13



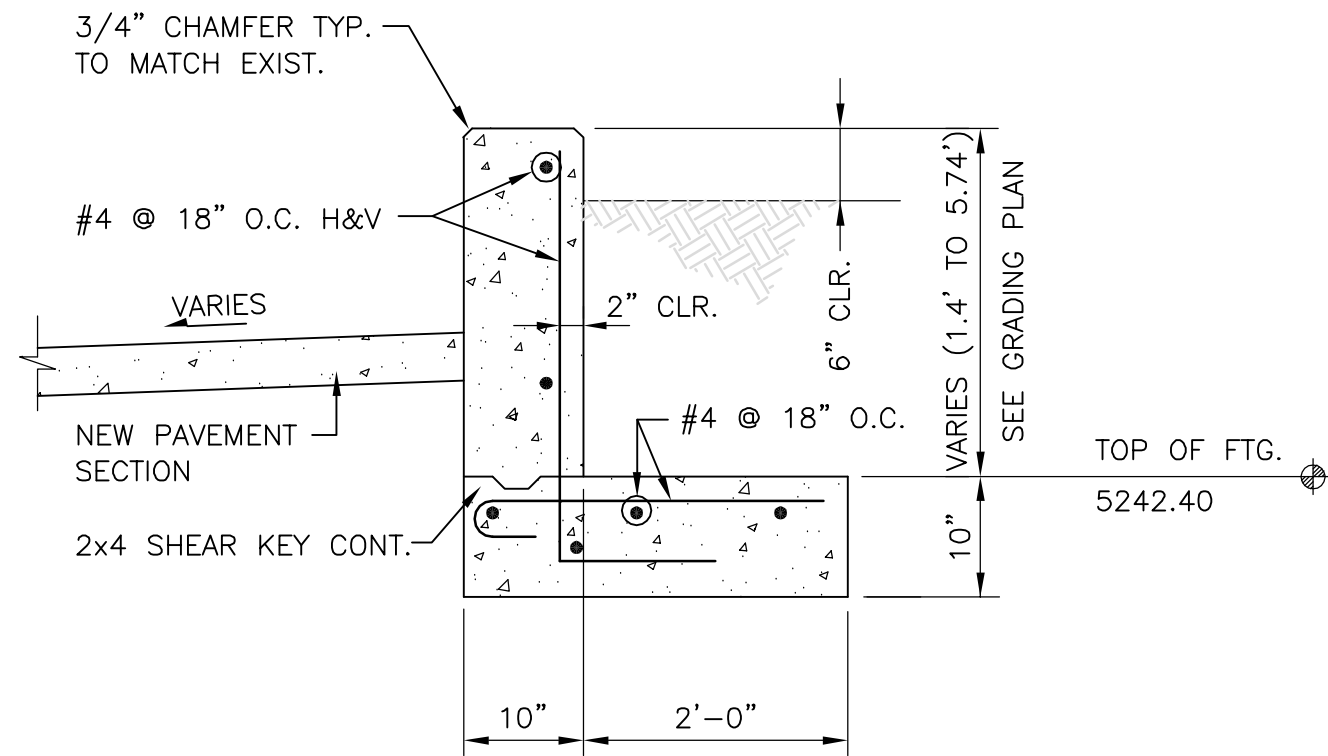
DOUBLE PARKING ISLAND — ISOMETRIC VIEW
SCALE: NONE



PIPE BOLLARD SPACING — DETAIL
SCALE: NONE



PRECAST CONCRETE WHEEL STOP
SCALE: NONE



CONCRETE RETAINING WALL — SECTION
SCALE: 3/4"=1'-0"

RECORD DRAWING

DATE: APRIL 2007

DRAWN BY: RLA

THESE RECORD DRAWINGS HAVE BEEN PREPARED, IN PART, ON THE BASIS OF INFORMATION COMPILED AND FURNISHED BY OTHERS. MOLZEN-CORBIN AND ASSOCIATES WILL NOT BE RESPONSIBLE FOR ANY ERRORS OR OMISSIONS WHICH HAVE BEEN INCORPORATED INTO THIS DOCUMENT AS A RESULT.

MOLZEN-CORBIN & Associates

ENGINEERS/ARCHITECTS/PLANNERS

2701 MILES RD SE
ALBUQUERQUE, NM 87106
TEL: 505.242-5700
FAX: 505.242-0673

CITY OF ALBUQUERQUE
PUBLIC WORKS DEPARTMENT
ENGINEERING DEVELOPMENT GROUP

TITLE: RENTAL CAR FACILITY - PARKING EXPANSION

MISCELLANEOUS DETAILS

Design Review Committee

City Engineer Approval

Last Design Update

Mo./Day/Yr.

Mo./Day/Yr.

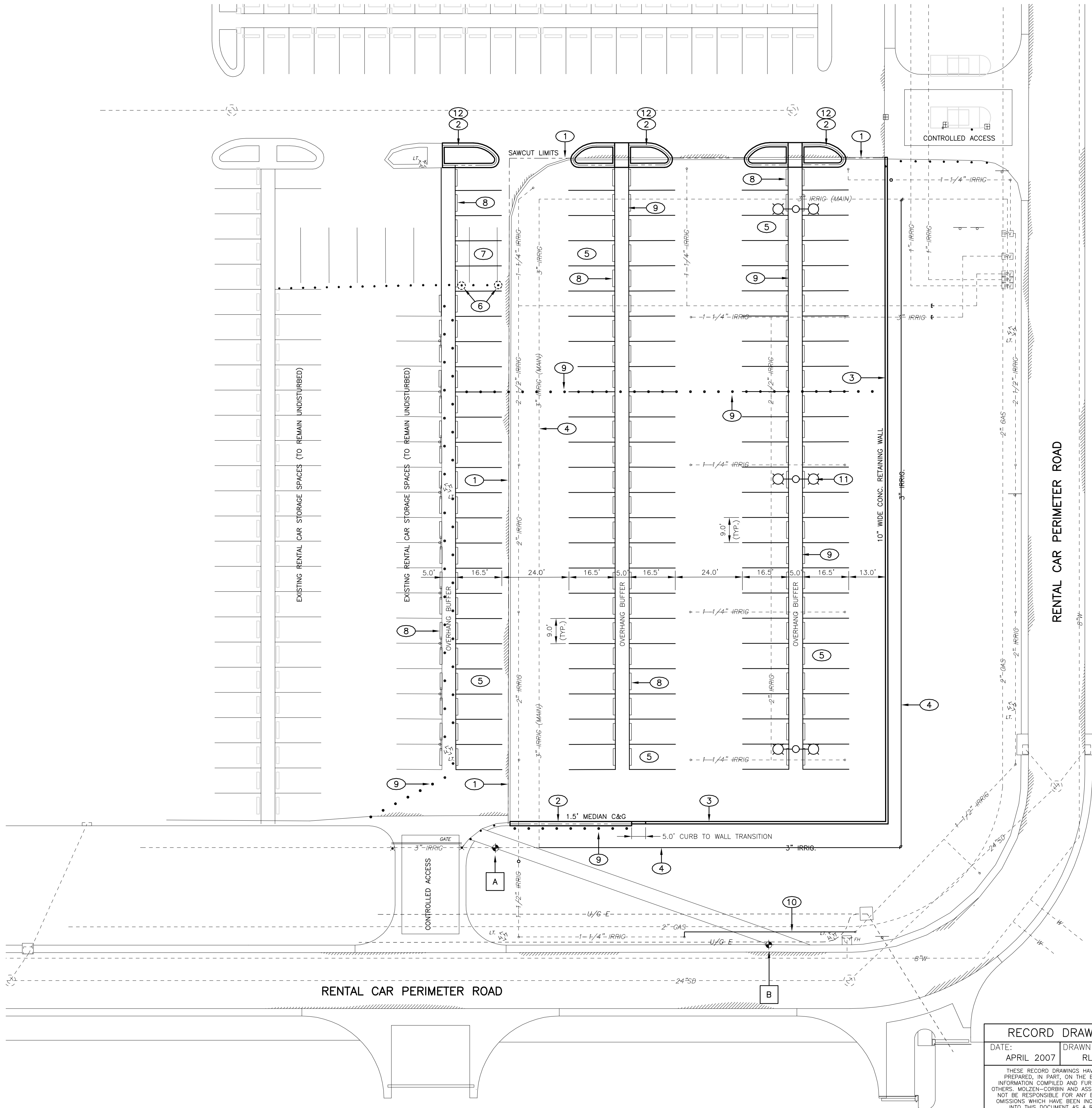
City Project No. 7970.06

Zone Map No. N-16

Sheet C-501

Of 6 / 13

SURVEY INFORMATION		BENCH MARKS		AS BUILT INFORMATION	
NO.	BY	DATE		CONTRACTOR	
				STAKED BY	DATE
				INSPECTED BY	DATE
				FIELD	DATE
				ADJUSTMENT BY	DATE
				DRAWINGS	DATE
				CORRECTED BY	DATE
MICRO-FILM INFORMATION					
				RECORDED BY	DATE
				NO.	



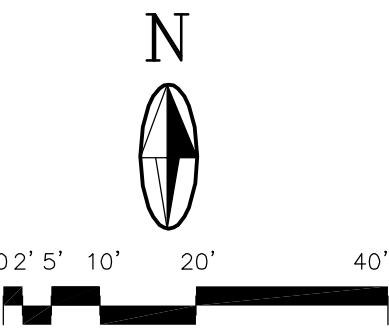
KEYED NOTES

- 1 SAWCUT, REMOVE, AND DISPOSE OF APPROX. 360' L.F. OF 10"x2' +/- HIGH CONCRETE RETAINING WALL, ABANDON EXISTING WALL 8" BELOW GRADE.
- 2 1.5' WIDE MEDIAN CURB AND GUTTER PER COA STD DWG 2415B, SEE SHEET C-302 FOR GEOMETRY AND GRADING PLAN.
- 3 10" WIDE CONCRETE RETAINING WALL, SEE SHEET C-501 FOR DETAILS
- 4 3" PVC IRRIGATION LINE RELOCATION, SEE SHEET C-303 FOR DETAILS
- 5 RESTRIPE RENTAL CAR PARKING AREA AS SHOWN
- 6 REMOVE AND DISPOSE OF EXISTING PIPE BOLLARDS. PATCH EXISTING PAVEMENT(TYP. OF 4)
- 7 OBLITERATE EXISTING PARKING STRIPES
- 8 PRECAST PARKING BUMPER (TYP. OF 144) SEE SHEET C-501 FOR DETAILS
- 9 STATIONARY PIPE BOLLARD PER CITY OF ALBUQUERQUE STD DETAIL 2250, 5' SPACING BETWEEN BOLLARDS (TYP. OF 84)
- 10 EXTEND PVC IRRIGATION LINES, SEE SHEET C-303 FOR DETAILS
- 11 3 - DOUBLE STANDARD PARKING LIGHTS WITH UNDERGROUND CONDUIT, SEE SHEET E-301 FOR DETAILS
- 12 NEW PARKING ISLAND INTERIORS TO RECIEVE 4" CRUSHED ROCK MULCH (TYP. ALL ISLANDS)

SURVEY CONTROL POINTS

- A** SURVEY CONTROL POINT A
MCA2 - PK NAIL
N=469805.66
E=388062.04
ELEV.=5243.26
- B** SURVEY CONTROL POINT B
MCA1 - PK NAIL
N=469771.08
E=388159.71
ELEV.=5243.23

CAUTION:
NOTE THAT ALL EXISTING UTILITIES MAY NOT BE SHOWN. EXISTING SERVICE CONNECTIONS ARE NOT SHOWN. ANY EXISTING UTILITIES THAT ARE SHOWN ARE SHOWN IN APPROXIMATE LOCATION ONLY. IT SHALL BE THE RESPONSIBILITY OF THE CONTRACTOR TO CONTACT ALL THE UTILITY OWNERS AND TO CONDUCT ALL NECESSARY FIELD INVESTIGATIONS PRIOR TO ANY EXCAVATION TO DETERMINE THE ACTUAL LOCATION OF UTILITIES AND OTHER IMPROVEMENTS.

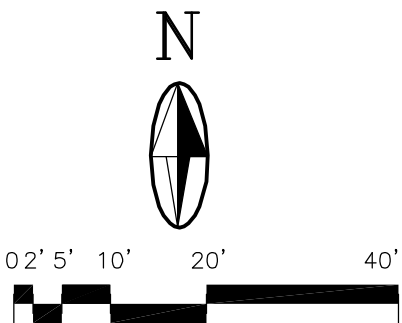
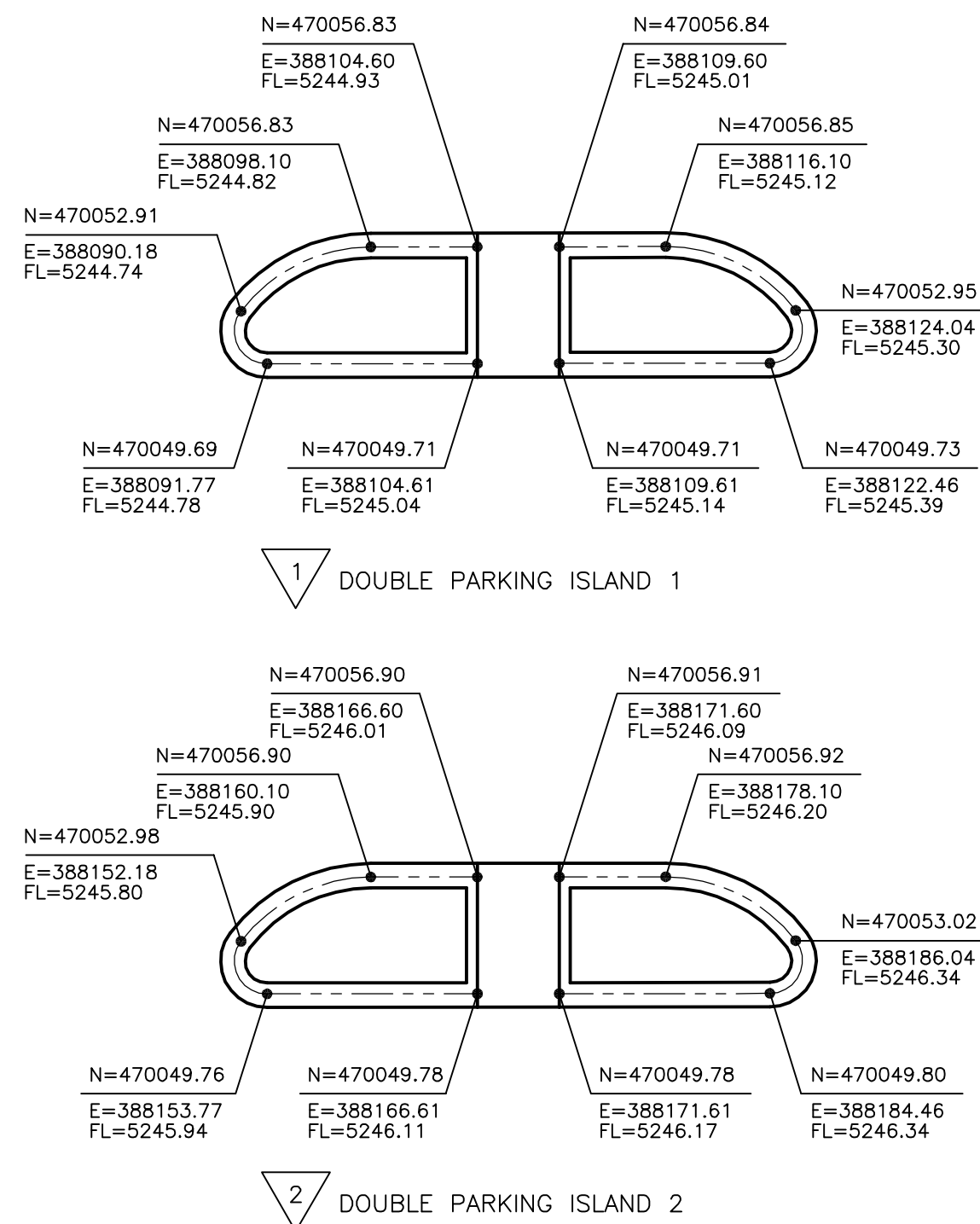
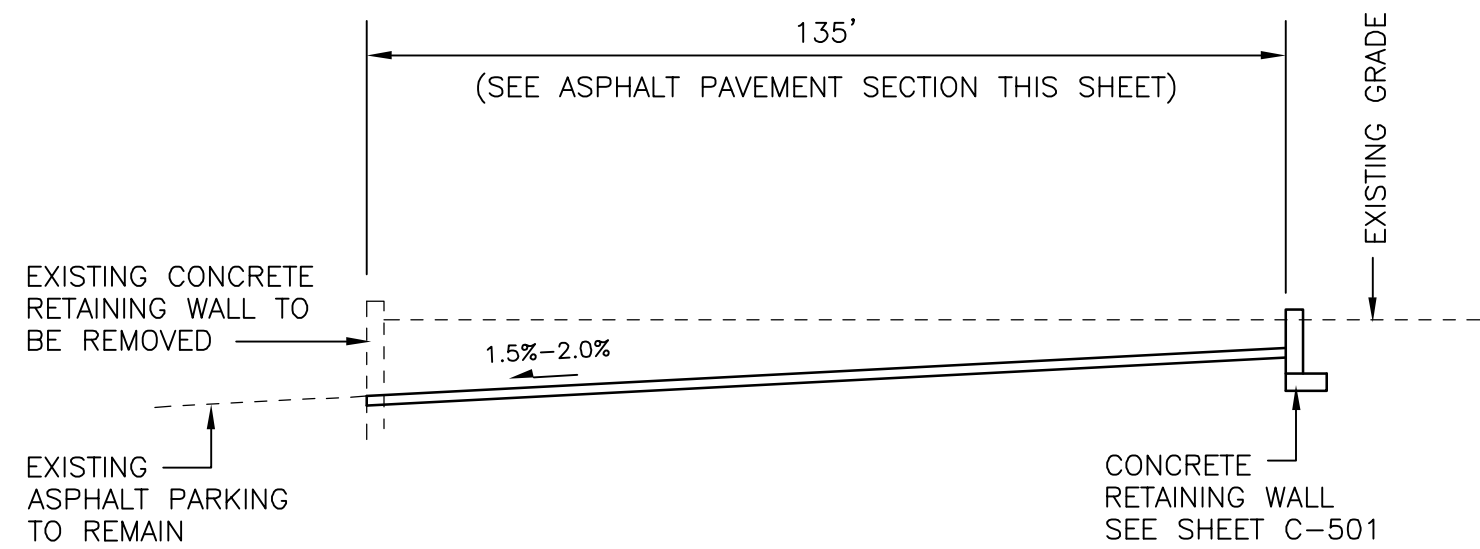
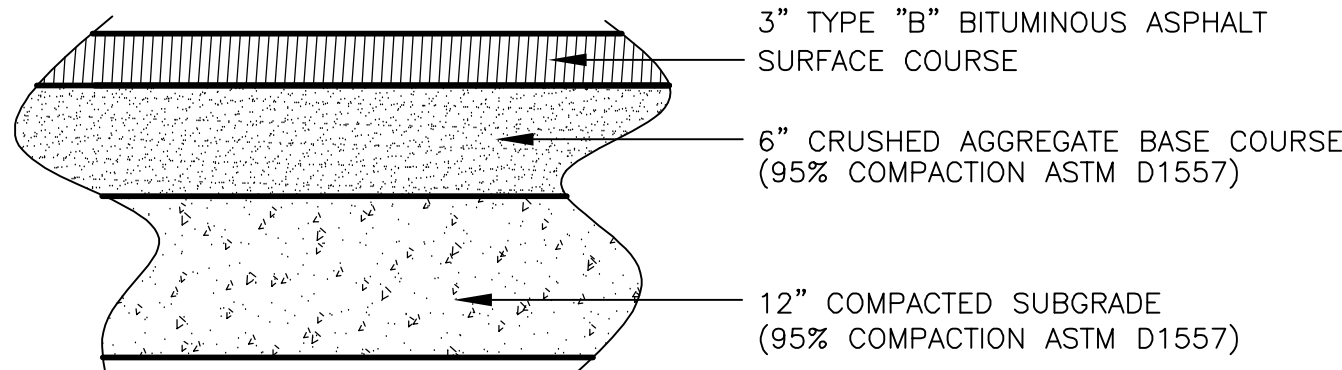
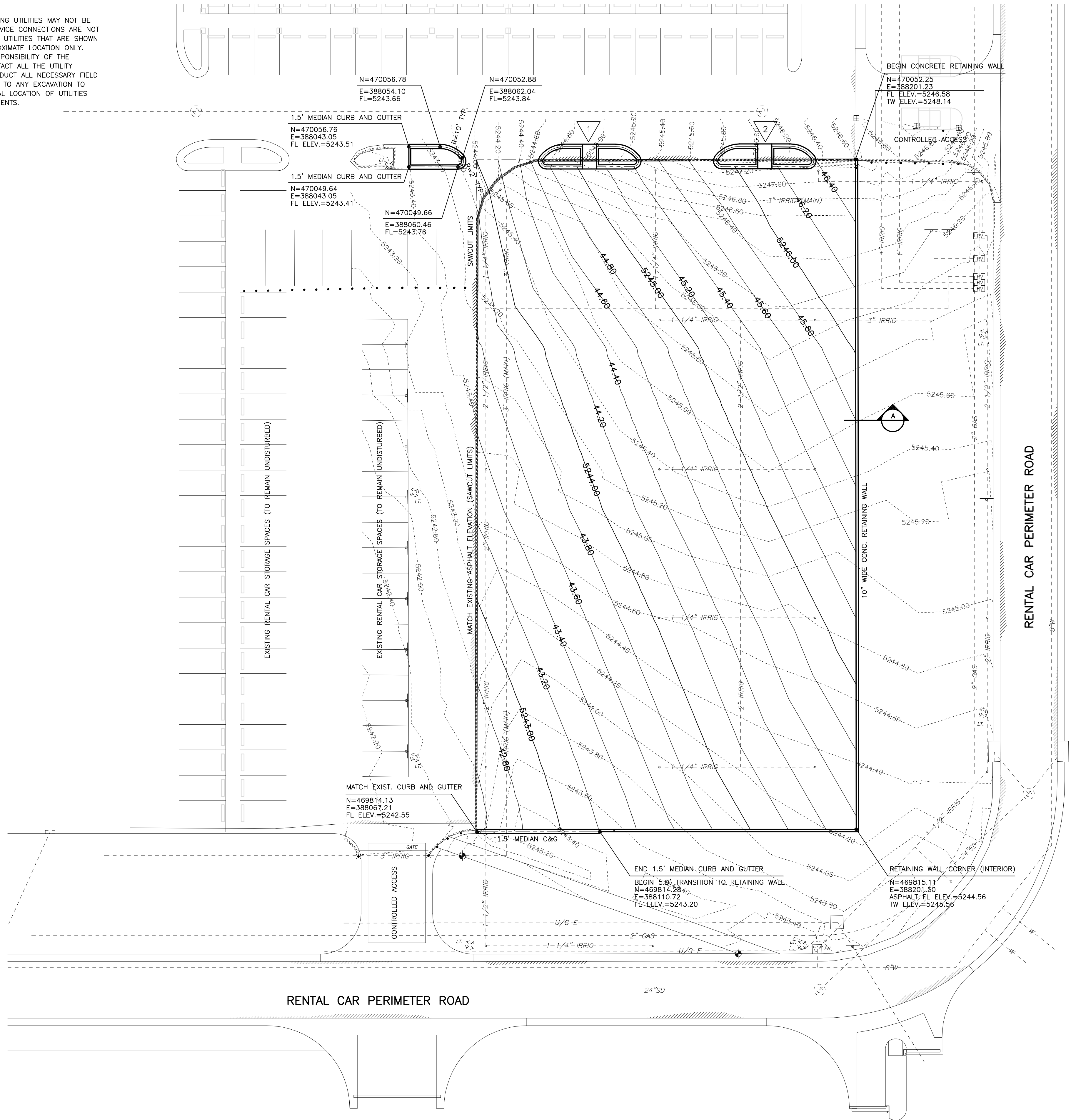


CITY OF ALBUQUERQUE PUBLIC WORKS DEPARTMENT ENGINEERING DEVELOPMENT GROUP			
TITLE: RENTAL CAR FACILITY - PARKING EXPANSION			
SITE PLAN (LARGER IMPROVEMENT AREA ALTERNATIVE)			
Design Review Committee	City Engineer Approval	Last Design Update	
City Project No. 7970.06		Zone Map No. N-16	Sheet C-301 Of 10 / 13

RECORD DRAWING	
DATE: APRIL 2007	DRAWN BY: RLA
THESE RECORD DRAWINGS HAVE BEEN PREPARED, IN PART, ON THE BASIS ON INFORMATION COMPILED AND FURNISHED BY OTHERS. MOLZEN-CORBIN AND ASSOCIATES WILL NOT BE RESPONSIBLE FOR ANY ERRORS OR OMISSIONS WHICH HAVE BEEN INCORPORATED INTO THIS DOCUMENT AS A RESULT.	

2 6 - 7 9 7 0 . 0 6 - 0 7

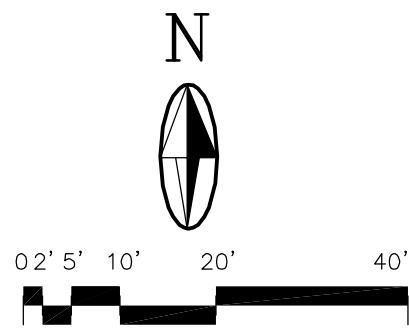
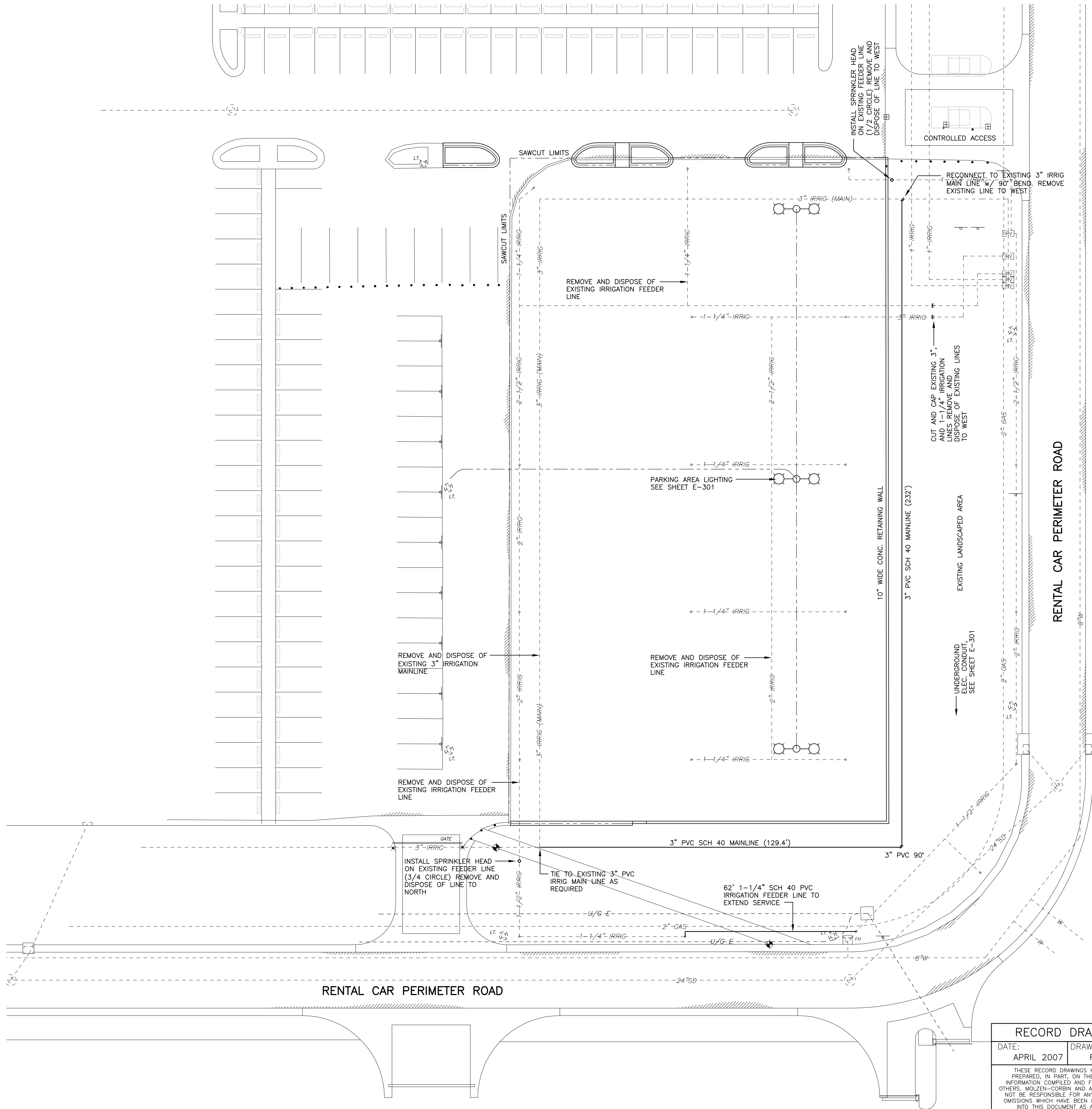
CAUTION:
NOTE THAT ALL EXISTING UTILITIES MAY NOT BE SHOWN. EXISTING SERVICE CONNECTIONS ARE NOT SHOWN. ANY EXISTING UTILITIES THAT ARE SHOWN ARE SHOWN IN APPROXIMATE LOCATION ONLY. IT SHALL BE THE RESPONSIBILITY OF THE CONTRACTOR TO CONTACT ALL THE UTILITY OWNERS AND TO CONDUCT ALL NECESSARY FIELD INVESTIGATIONS PRIOR TO ANY EXCAVATION TO DETERMINE THE ACTUAL LOCATION OF UTILITIES AND OTHER IMPROVEMENTS.



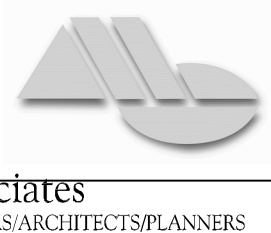
RECORD DRAWING
DATE: APRIL 2007 DRAWN BY: RLA
THESE RECORD DRAWINGS HAVE BEEN PREPARED, IN PART, ON THE BASIS OF INFORMATION COMPILED AND FURNISHED BY OTHERS. MOLZEN-CORBIN AND ASSOCIATES WILL NOT BE RESPONSIBLE FOR ANY ERRORS OR OMISSIONS WHICH HAVE BEEN INCORPORATED INTO THIS DOCUMENT AS A RESULT.

CITY OF ALBUQUERQUE PUBLIC WORKS DEPARTMENT ENGINEERING DEVELOPMENT GROUP			
TITLE: RENTAL CAR FACILITY - PARKING EXPANSION			
GEOMETRY LAYOUT / GRADING PLAN (LARGER IMPROVEMENT AREA ALTERNATIVE)			
Design Review Committee	City Engineer Approval	Last Design Update	
City Project No. 7970.06		Zone Map No. N-16	Sheet C-302 Of 11 / 13

2 6 - 7 9 7 0 . 0 6 - 0 7



2701 MILES RD SE
ALBUQUERQUE, NM 87106
TEL: 505.242.5700
FAX: 505.242.0673



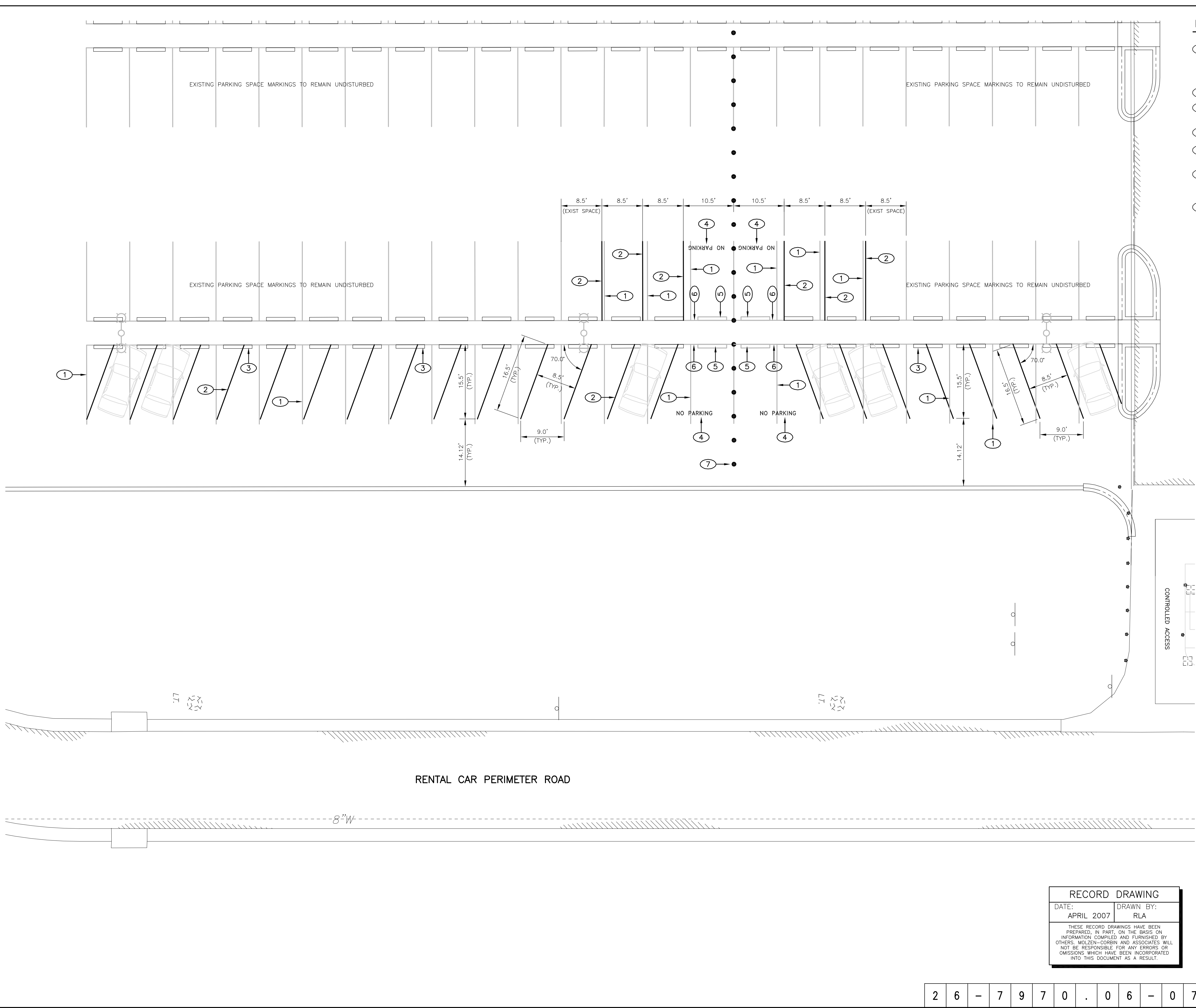
MOLZEN-CORBIN & Associates
ENGINEERS/ARCHITECTS/PLANNERS

CITY OF ALBUQUERQUE PUBLIC WORKS DEPARTMENT ENGINEERING DEVELOPMENT GROUP			
TITLE: RENTAL CAR FACILITY - PARKING EXPANSION IRRIGATION UTILITY RELOCATION PLAN (LARGER IMPROVEMENT AREA ALTERNATIVE)			
Design Review Committee	City Engineer Approval	Last Design Update	
City Project No. 7970.06		Zone Map No. N-16	Sheet C-303 Of 12 / 13
Mo./Day/Yr.		Mo./Day/Yr.	

RECORD DRAWING	
DATE: APRIL 2007	DRAWN BY: RLA
THESE RECORD DRAWINGS HAVE BEEN PREPARED, IN PART, ON THE BASIS OF INFORMATION COMPILED AND FURNISHED BY OTHERS. MOLZEN-CORBIN AND ASSOCIATES WILL NOT BE RESPONSIBLE FOR ANY ERRORS OR OMISSIONS WHICH HAVE BEEN INCORPORATED INTO THIS DOCUMENT AS A RESULT.	

CAUTION:
NOTE THAT ALL EXISTING UTILITIES MAY NOT BE SHOWN. EXISTING SERVICE CONNECTIONS ARE NOT SHOWN. ANY EXISTING UTILITIES THAT ARE SHOWN ARE SHOWN IN APPROXIMATE LOCATION ONLY. IT SHALL BE THE RESPONSIBILITY OF THE CONTRACTOR TO CONTACT ALL THE UTILITY OWNERS AND TO CONDUCT ALL NECESSARY FIELD INVESTIGATIONS PRIOR TO ANY EXCAVATION TO DETERMINE THE ACTUAL LOCATION OF UTILITIES AND OTHER IMPROVEMENTS.

ENGINEER'S SEAL		SURVEY INFORMATION		BENCH MARKS		AS BUILT INFORMATION	
		NO.	BY	DATE		CONTRACTOR	
						STAKED BY	DATE
						INSPECTED BY	DATE
						FIELD DRAWINGS	DATE
						CORRECTED BY	DATE
						MICRO-FILM INFORMATION	
						RECORDED BY	DATE
						NO.	



- KEYED NOTES**
- 1 OBLITERATE (REMOVE) EXISTING PARKING STRIPE (EAST/WEST LINES). EXISTING PARKING STOP LINE (NORTH/SOUTH) TO REMAIN UNLESS OTHERWISE NOTED.
 - 2 PARKING STRIPE, RESTRIPE AS SHOWN
 - 3 EXISTING PARKING BUMPER TO REMAIN UNDISTURBED, UNLESS OTHERWISE NOTED
 - 4 STENCIL "NO PARKING" AS SHOWN
 - 5 REMOVE EXISTING PARKING BUMPER, RETURN TO OWNER
 - 6 OBLITERATE (REMOVE) EXISTING PARKING STOP LINE (NORTH/SOUTH) AT END OF ADJACENT USABLE PARKING SPACE AS SHOWN
 - 7 EXISTING PARKING BOLLARD TO REMAIN

CAUTION:
NOTE THAT ALL EXISTING UTILITIES MAY NOT BE SHOWN. EXISTING SERVICE CONNECTIONS ARE NOT SHOWN. ANY EXISTING UTILITIES THAT ARE SHOWN ARE SHOWN IN APPROXIMATE LOCATION ONLY. IT SHALL BE THE RESPONSIBILITY OF THE CONTRACTOR TO CONTACT ALL THE UTILITY OWNERS AND TO CONDUCT ALL NECESSARY FIELD INVESTIGATIONS PRIOR TO ANY EXCAVATION TO DETERMINE THE ACTUAL LOCATION OF UTILITIES AND OTHER IMPROVEMENTS.

2701 MILES RD SE
ALBUQUERQUE, NM 87106
TEL: 505.242-5700
FAX: 505.242-0673

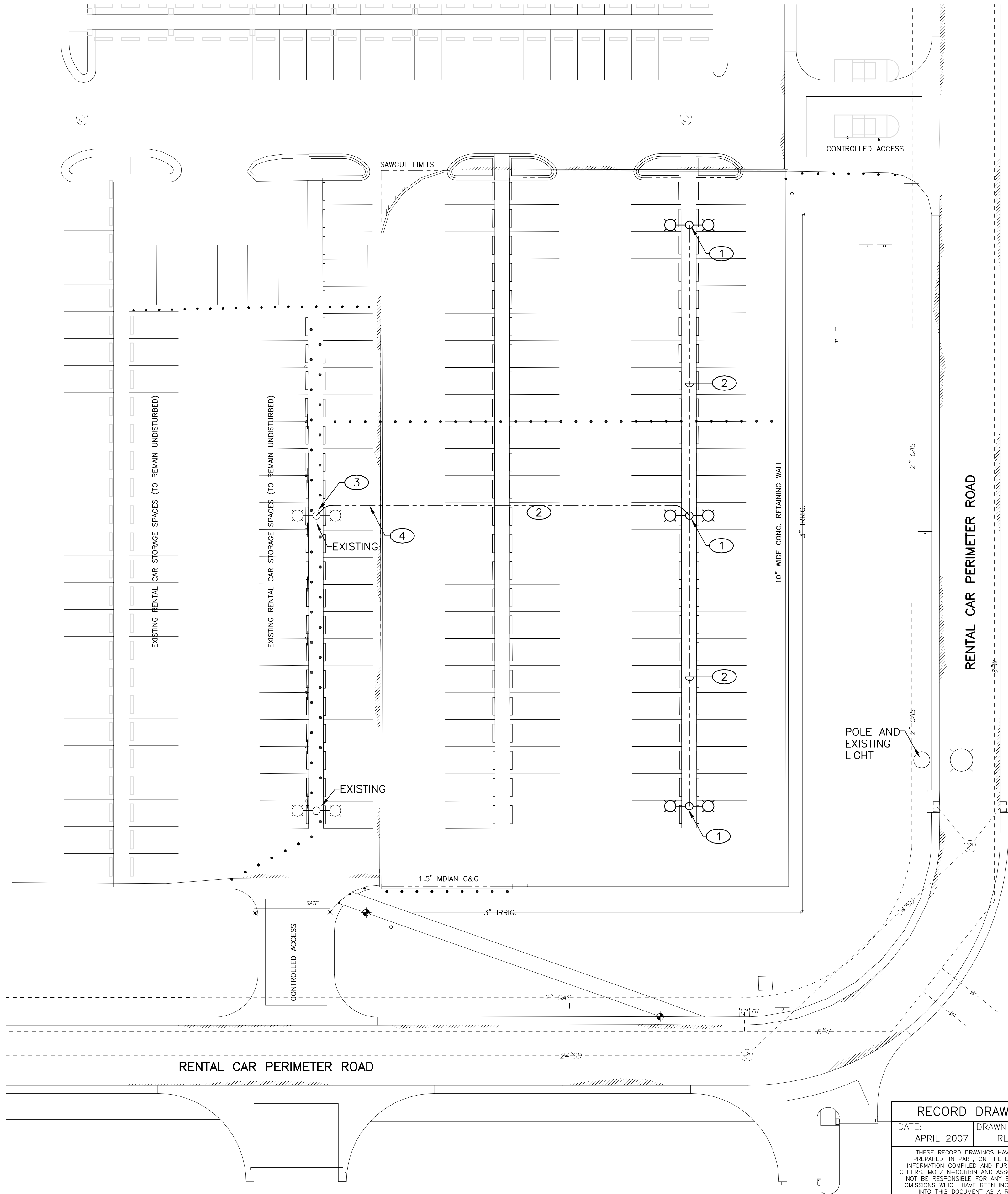
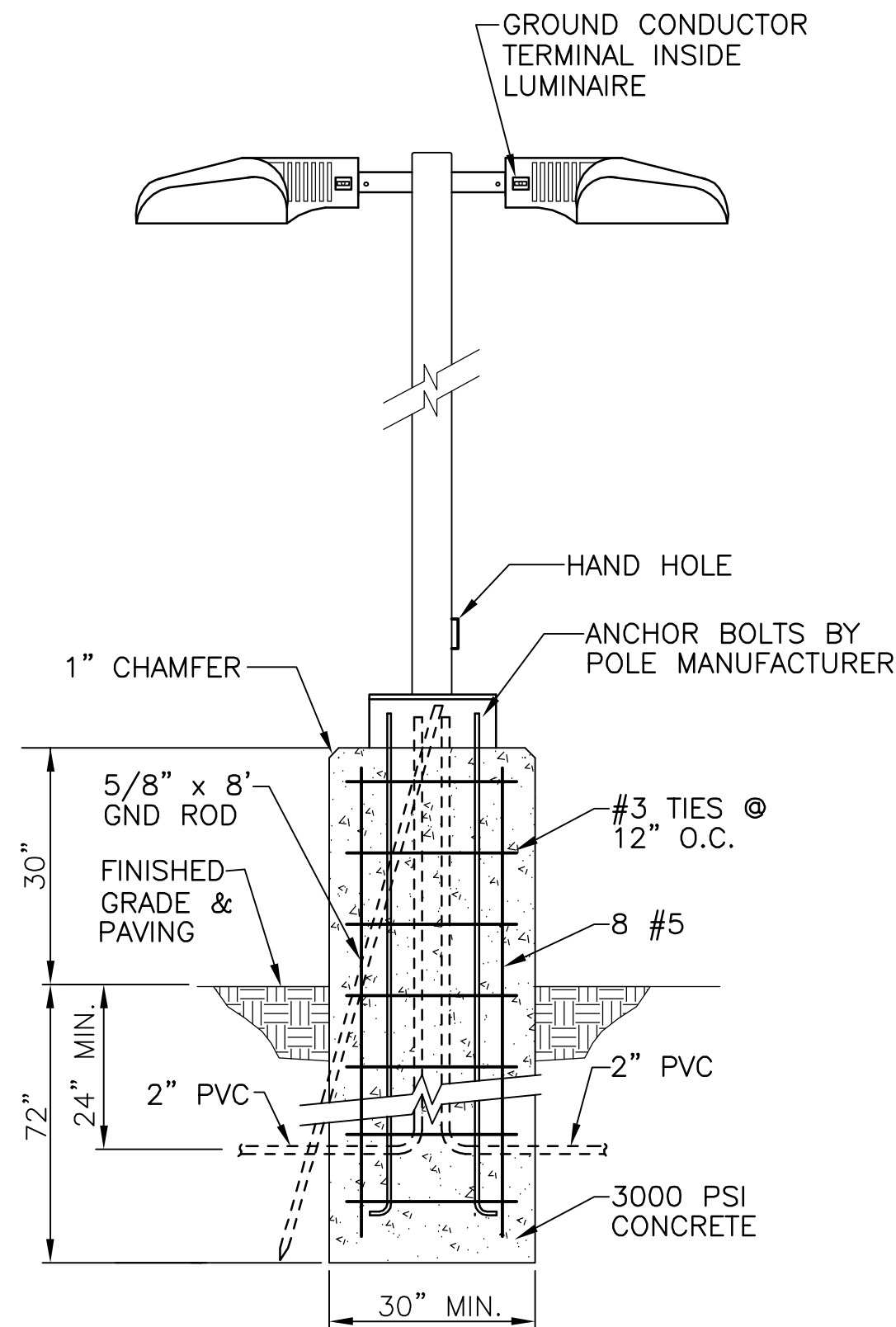
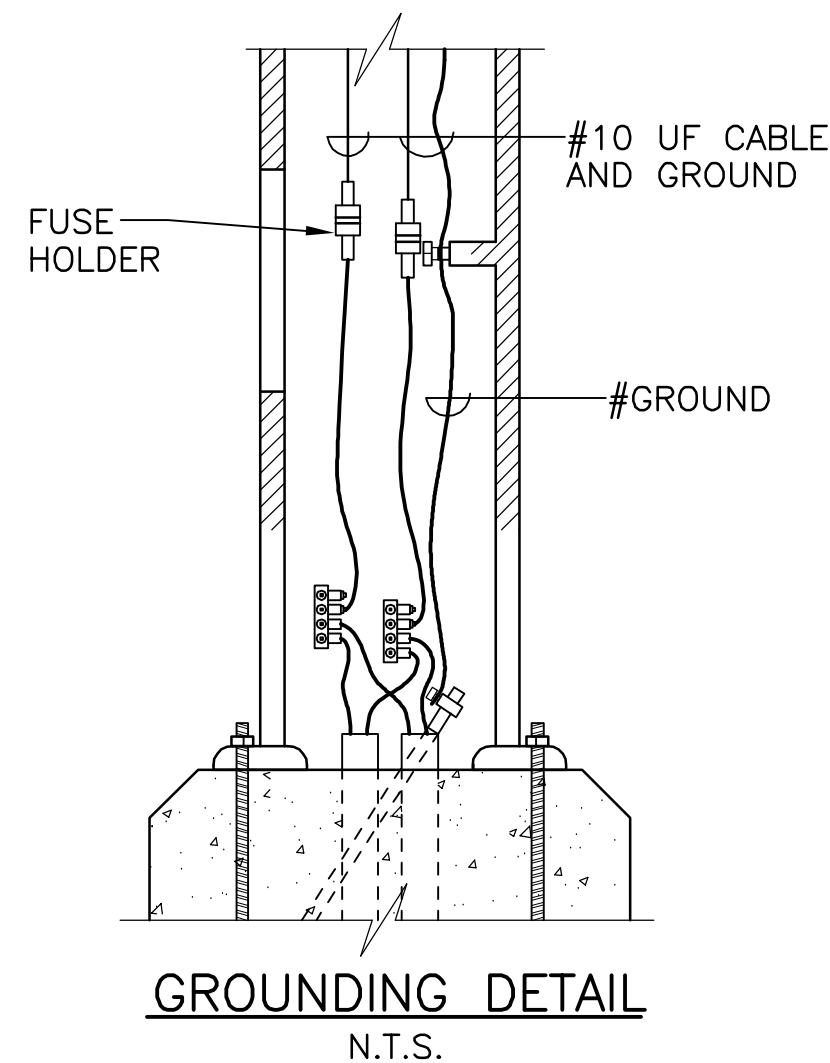
MOLZEN-CORBIN & Associates
ENGINEERS/ARCHITECTS/PLANNERS

RECORD DRAWING

DATE: APRIL 2007	DRAWN BY: RLA
THESE RECORD DRAWINGS HAVE BEEN PREPARED, IN PART, ON THE BASIS OF INFORMATION COMPILED AND FURNISHED BY OTHERS. MOLZEN-CORBIN AND ASSOCIATES WILL NOT BE RESPONSIBLE FOR ANY ERRORS OR OMISSIONS WHICH HAVE BEEN INCORPORATED INTO THIS DOCUMENT AS A RESULT.	

CITY OF ALBUQUERQUE PUBLIC WORKS DEPARTMENT ENGINEERING DEVELOPMENT GROUP			
TITLE: RENTAL CAR FACILITY - PARKING EXPANSION			
REVISED PARKING LAYOUT PLAN			
Design Review Committee	City Engineer Approval	Last Design Update	Mo./Day/Yr.
City Project No. 7970.06		Zone Map No. N-16	Sheet C-304 Of

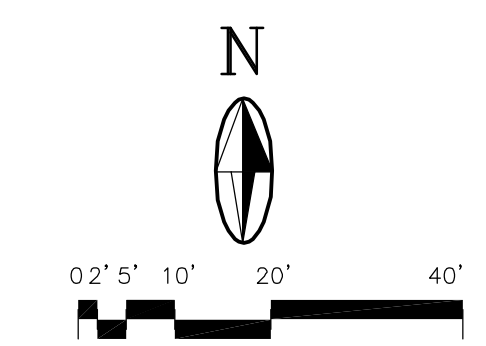
ENGINEER'S SEAL		SURVEY INFORMATION		BENCH MARKS		AS BUILT INFORMATION	
		FIELD NOTES				CONTRACTOR	
		NO.	BY	DATE		STAKED BY	DATE
						INSPECTED BY	DATE
						FIELD	DATE
						ADJUSTMENT BY	DATE
						DRAWINGS	DATE
						CORRECTED BY	DATE
						MICRO-FILM INFORMATION	
						RECORDED BY	DATE
						NO.	



- GENERAL NOTES**
1. VERIFY BURIED UTILITY LOCATIONS PRIOR TO EXCAVATION.
 2. MATCH DESIGN AND COLOR OF EXISTING LIGHTING EQUIPMENT AND ALIGN WITH EXISTING POLES.
 3. LIGHTING CONTROLS AND PANEL (CHIA) LOCATED IN ELECTRIC ROOM ON EAST SIDE MAIN BUILDING.

- KEYED NOTES**
- ① CONCRETE BASE WITH 27' ALUMINUM POLE, 2-6" ARMS, AND 2-250W MH LUMINAIRES. SEE DETAIL.
 - ② 2" PVC WITH 3 #10 THWN, MINIMUM BURY 24".
 - ③ INSTALL 2" RIGID CONDUIT UP BASE AND LB INTO BASE COVER. TIE INTO EXISTING CIRCUIT WITH SUBMERSIBLE TEE TAPS.
 - ④ SAW-CUT AND REPLACE ASPHALT FOR TRENCHING.

EQUIPMENT SCHEDULE	
MATERIAL	MANUFACTURER
27' ALUM. POLE 2-MOUNTING ARMS.	KIM LTRA27-8156 PLAT. SILVER OR ENGINEER APPROVED SUBSTITUTE.
250W MH TYPE 5, FULL CUTOFF LUMINAIRE, 277V BALLAST.	KIM STL SERIES 250MH PLAT. SILVER OR ENGINEER APPROVED SUBSTITUTE.



CAUTION:
NOTE THAT ALL EXISTING UTILITIES MAY NOT BE SHOWN. EXISTING SERVICE CONNECTIONS ARE NOT SHOWN. ANY EXISTING UTILITIES THAT ARE SHOWN ARE SHOWN IN APPROXIMATE LOCATION ONLY. IT SHALL BE THE RESPONSIBILITY OF THE CONTRACTOR TO CONTACT ALL THE UTILITY OWNERS AND TO CONDUCT ALL NECESSARY FIELD INVESTIGATIONS PRIOR TO ANY EXCAVATION TO DETERMINE THE ACTUAL LOCATION OF UTILITIES AND OTHER IMPROVEMENTS.

2701 MILES RD SE
ALBUQUERQUE, NM 87106
TEL: 505.242.5700
FAX: 505.242.0673

MOLZEN-CORBIN & Associates
ENGINEERS/ARCHITECTS/PLANNERS

RECORD DRAWING

DATE: APRIL 2007 DRAWN BY: RLA

THESE RECORD DRAWINGS HAVE BEEN PREPARED, IN PART, ON THE BASIS OF INFORMATION COMPILED AND FURNISHED BY OTHERS. MOLZEN-CORBIN AND ASSOCIATES WILL NOT BE RESPONSIBLE FOR ANY ERRORS OR OMISSIONS WHICH HAVE BEEN INCORPORATED INTO THIS DOCUMENT AS A RESULT.

CITY OF ALBUQUERQUE PUBLIC WORKS DEPARTMENT ENGINEERING DEVELOPMENT GROUP	
TITLE: RENTAL CAR FACILITY - PARKING EXPANSION ELECTRICAL LIGHTING PLAN	
Design Review Committee	City Engineer Approval
Zone Map No. 7970.06	Sheet E-301 Of 13 / 13

ENGINEER'S SEAL		SURVEY INFORMATION		BENCH MARKS		AS BUILT INFORMATION	
NO.	DATE	FIELD NOTES	BY	NO.	DATE	CONTRACTOR	DATE
						STAKED BY	DATE
						INSPECTED BY	DATE
						FIELD	DATE
						ADJUSTED BY	DATE
						CONSTRUCTION BY	DATE
						DRAWINGS	DATE
						CORRECTED BY	DATE
						MICRO-FILM INFORMATION	
						RECORDED BY	DATE
						NO.	