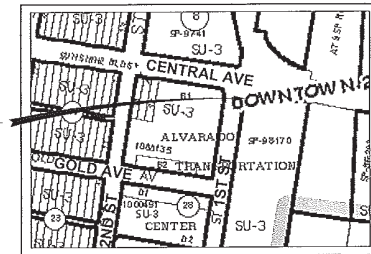


CITY OF ALBUQUERQUE NEW MEXICO



COA PROJECT
NO. 5011.20
LOCATION



LOCATION MAP

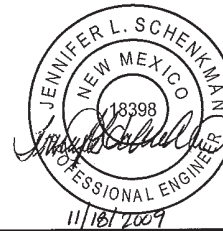
NTS

CONSTRUCTION PLANS FOR CENTRAL AVE PEDESTRIAN IMPROVEMENT SE CORNER OF CENTRAL AVE AND 1ST ST COA ON-CALL PROJECT NO. 5011.20

INDEX

- 1 TITLE, LOCATION MAP AND INDEX OF SHEETS
- 2 LEGEND, GENERAL NOTES, INCIDENTALS AND UTILITY OWNERS
- 3 SUMMARY OF QUANTITIES
- 4 SURVEY CONTROL
- 5 MISCELLANEOUS QUANTITIES
- 6-7 MISCELLANEOUS DETAILS
- 8 PLAN AND ELEVATION
- 9 PEDESTRIAN ACCESS DETAILS NMDOT STD SERIAL PAD-001-8/10 12/31/2003

HDR
2155 LOUDIANA BLVD., NE
SUITE 9500
ALBUQUERQUE, NM 87110
PHONE: (505) 830-5400
FAX: (505) 830-5454



REV.	SHEETS	CITY ENGINEER	DATE	USER DEPARTMENT	DATE	USER DEPARTMENT	DATE
ENGINEERS STAMP & SIGNATURE		APPROVALS	ENGINEER	DATE	XXXXXXXXXXXXXXXXXXXX		
		DRG. Chairman			APPROVED FOR CONSTRUCTION		
		Transportation					
		Water/Wastewater					
		Hydrology					
		Parks					
		Constr. Mgmt.			City Engineer Date		
		Constr. Coord.					
City Project No.				Sheet Of			
5011.20				1 9			

DMD/Construction 8007.11

PROPOSED	EXISTING	DESCRIPTION
		SANITARY SEWER MANHOLE
		STORM DRAIN MANHOLE
		COMMUNICATION MANHOLE
		ELECTRIC MANHOLE
		SANITARY SEWER LINE w/size & type
		STORM DRAIN LINE w/size & type
		WATER LINE w/size & type
		OVERHEAD ELECTRICAL LINE
		ELECTRICAL RISER
		UNDERGROUND ELECTRICAL/TRAFFIC CONTROL
		UNDERGROUND TELEPHONE
		OVERHEAD TELEPHONE
		GAS LINE w/size & type
		CABLE TELEVISION LINE
		ENCASEMENT
		STORM INLET (GRADE ELEVATION GIVEN IN PLANS IS EXTENDED FLOW LINE)
		WATER RISER
		WATER VALVE
		BUTTERFLY VALVE
		FIRE HYDRANT
		REDUCER
		SAS SERVICE CONNECTION
		WATER SERVICE CONNECTION
		TEES
		CROSSES
		BENDS
		CAPS & PLUGS
		WATER METER
		GAS METER
		GAS RISER
		VALVE BOX
		POWER POLE
		TRAFFIC SIGNAL
		TRAFFIC CONTROL BOX
		PULL BOX
		TELEPHONE RISER
		TELEPHONE BOOTH
		FIRE ALARM BOX
		CURB & GUTTER
		SIDEWALK
		BLOCK WALL
		CHAIN LINK FENCE
		FIELD FENCE
		RIGHT OF WAY LINES
		PROPERTY LINES(SIDE)
		PUBLIC EASEMENT
		POWER POLE W/LIGHT
		DRIVEWAY
		MOBILITY IMPAIRED ACCESS RAMP
		COA PROJECT CONTROL POINT OR ACS MONUMENT (DO NOT DISTURB TEST BORING)
		HORIZ. & VERT. CONTROL
		CENTERLINE
		FLOW LINE ELEVATION
		TOP OF CURB ELEVATION
		TOP OF CONCRETE ELEVATION
		TOP OF SIDEWALK/RAMP

GENERAL NOTES

- THE CONTRACTOR SHALL PROVIDE INGRESS AND EGRESS TO LOCAL BUSINESSES AND RESIDENCES FOR THE DURATION OF THE PROJECT. THE CONTRACTOR SHALL ADVISE OF AND SCHEDULE ACCESS CLOSURES, AT LEAST 24 HOURS IN ADVANCE, WITH PROPERTY OWNERS AND THE CONSTRUCTION PROJECT MANAGER.
- NO MATERIAL PITS HAVE BEEN DESIGNATED FOR THIS PROJECT. THE CONTRACTOR MAY OBTAIN SPECIFICATION BORROW OR SURFACING MATERIAL FROM ANY ACCEPTABLE SOURCE.
- SEVEN (7) WORKING DAYS PRIOR TO BEGINNING CONSTRUCTION THE CONTRACTOR SHALL SUBMIT TO THE CONSTRUCTION COORDINATION DIVISION A DETAILED CONSTRUCTION SCHEDULE. TWO (2) WORKING DAYS PRIOR TO CONSTRUCTION THE CONTRACTOR SHALL OBTAIN A BARRICADE PERMIT FROM THE CONSTRUCTION COORDINATION DIVISION. THE CONTRACTOR SHALL NOTIFY BARRICADE ENGINEER (924-3400) PRIOR TO OCCUPYING AN INTERSECTION.
- THE CONTRACTOR SHALL BE RESTRICTED TO THE USE OF 35 TON HOV-VIBRATING ROLLER MAXIMUM TO OBTAIN THE REQUIRED COMPACTION IN EMBANKMENT IN URBAN AREAS WHERE THE USE OF HEAVIER EQUIPMENT COULD DAMAGE UNDERGROUND UTILITIES OR OTHER PERMANENT STRUCTURES.
- ALL WORK DETAILED ON THESE PLANS TO BE PERFORMED UNDER THIS CONTRACT SHALL, EXCEPT AS OTHERWISE STATED OR PROVIDED FOR HEREIN, BE CONSTRUCTED IN ACCORDANCE WITH THE CITY OF ALBUQUERQUE STANDARD SPECIFICATIONS FOR PUBLIC WORKS CONSTRUCTION, 1986 EDITION THROUGH UPDATE NO.7.
- TWO (2) WORKING DAYS PRIOR TO ANY EXCAVATION, CONTRACTOR MUST CONTACT N.M. ONE-CALL SYSTEM, 260-1990, FOR LOCATION OF EXISTING UTILITIES.
- ALL NEW CURB AND GUTTER, SIDEWALKS OR STAIRS SHALL MATCH THE ELEVATIONS OF ADJUTING EXISTING AREAS AS SHOWN IN THE PLANS OR AS DIRECTED BY THE PROJECT MANAGER.
- THE CONTRACTOR SHALL COORDINATE CONSTRUCTION ACTIVITIES WITH ALL OTHER CONTRACTORS AND UTILITY COMPANIES WORKING IN THE SAME AREA. THE CONTRACTOR MAY BE REQUIRED TO RESCHEDULE ACTIVITIES TO ALLOW ADDITIONAL CREWS TO PERFORM THEIR REQUIRED WORK. NO ADDITIONAL COMPENSATION WILL BE ALLOWED FOR DELAYS OR INCONVENIENCE CAUSED BY UTILITY COMPANY WORK CREWS.
- THE CONTRACTOR SHALL ASSUME RESPONSIBILITY FOR ANY DAMAGE TO EXISTING PAVEMENTS, PAVEMENT MARKINGS, CURB AND GUTTER, OR SIDEWALK DURING CONSTRUCTION. APART FROM THOSE SECTIONS INDICATED FOR REMOVAL ON THE PLANS, AND SHALL REPAIR OR REPLACE PER CITY OF ALBUQUERQUE STANDARDS AT CONTRACTOR'S OWN EXPENSE.
- CONTRACTOR SHALL BE RESPONSIBLE FOR ACQUIRING, AT CONTRACTOR'S OWN EXPENSE, ALL PERMITS NECESSARY FOR CONSTRUCTION.
- ALL WORK IMPACTING AN ARTERIAL ROADWAY WILL REQUIRE 24-HOUR CONSTRUCTION IN ACCORDANCE WITH THE CITY OF ALBUQUERQUE'S ORANGE BARREL POLICY.
- OVERNIGHT PARKING OF CONSTRUCTION VEHICLES ON PRIVATE PROPERTY IS THE SOLE RESPONSIBILITY OF THE CONTRACTOR.
- THE CONTRACTOR SHALL TAKE PRECAUTIONS TO PROTECT HORIZONTAL AND VERTICAL CONTROL SURVEY MONUMENTS, AS SHOWN ON SHEET 4, PRIOR TO INITIATING CONSTRUCTION. IF DURING THE COURSE OF CONSTRUCTION OPERATIONS, THE CONTRACTOR DISTURBS OR DESTROYS A MONUMENT, THE CONTRACTOR SHALL NOTIFY THE CITY SURVEYOR. THE MONUMENT SHALL ONLY BE REPLACED BY THE CITY SURVEY SECTION AT THE CONTRACTOR'S EXPENSE.
- ANY EARTHWORK NAUL ON THIS PROJECT WILL BE CONSIDERED AS INCLUDED IN THE CONTRACT PRICE FOR ITEM 204.010 - FILL, EXCAV, BF & COMP, U, >2" AND NO SEPARATE PAYMENT WILL BE MADE THEREFOR.
- THE CONTRACTOR SHALL BE RESPONSIBLE FOR ALL REMOVALS REQUIRED TO COMPLETE THE PROJECT. ADDITIONAL REMOVALS NOT SHOWN ON THE PLANS WILL BE CONSIDERED AS INCLUDED IN THE CONTRACT PRICE FOR "REMOVAL OF STRUCTURES AND OBSTRUCTIONS" - THIS ITEM SHALL INCLUDE REMOVALS OF CURB AND GUTTER, HEADER CURB, CONCRETE PLANTERS, AND RAISED RAIL TIES.
- THE CONTRACTOR SHALL NOT STORE EQUIPMENT OR MATERIAL WITHIN THE CENTRAL AVENUE RIGHT OF WAY UNLESS THE EQUIPMENT OR MATERIAL IS PROPERLY SHIELDED UTILIZING CURRENT SAFETY DESIGN AND INSTALLATION METHODS. THE SAFETY DESIGN FOR SHIELDING SHALL BE PROVIDED BY THE CONTRACTOR AND MUST BE APPROVED BY THE PROJECT MANAGER BEFORE IMPLEMENTING. THIS WORK, INCLUDING DESIGN, INSTALLATION, AND REMOVAL OF THE SHIELDING, SHALL BE CONSIDERED INCIDENTAL TO THE COMPLETION OF THIS PROJECT AND NO SEPARATE MEASUREMENT OR PAYMENT WILL BE MADE THEREFOR.
- THROUGHOUT THE LIFE OF THIS PROJECT, THE CONTRACTOR SHALL KEEP THE LOCAL NEWS MEDIA INFORMED OF CONSTRUCTION ACTIVITIES WHICH WILL IMPEDE OR DISRUPT THE NORMAL FLOW OF TRAFFIC.
- THE CONTRACTOR SHALL SUBMIT FINAL AS-BUILT PLANS SHALL BE SUBMITTED TO THE PROJECT MANAGER PRIOR TO FINAL PAYMENT.
- THE CONTRACTOR WILL BE RESPONSIBLE FOR DISPOSING OF ALL DEBRIS, INCLUDING, BUT NOT LIMITED TO HAZARDOUS WASTE AT DISPOSAL SITES APPROVED BY GOVERNMENTAL AGENCIES REGULATING THE DISPOSAL OF SUCH ITEMS.
- CONTRACTOR SHALL PROVIDE A WATER SHUT-OFF PLAN AND SHALL BE RESPONSIBLE FOR TANKING AND COORDINATION OF WATER SHUT OFF AT LEAST SEVEN (7) WORKING DAYS PRIOR TO CONSTRUCTION. CONTRACTOR SHALL CONTACT THE ALBUQUERQUE BERNALILLO COUNTY WATER UTILITY AUTHORITY, 857-8200. VALVES SHALL BE OPERATED ONLY BY WATER UTILITY DIVISION CREWS. THIS SHALL BE CONSIDERED INCIDENTAL AND NO ADDITIONAL PAYMENT WILL BE MADE THEREFOR.
- CONTRACTOR SHALL FIELD VERIFY EXISTING PAVING CONFIGURATION AND REQUIRED CONNECTION COMPONENTS PRIOR TO CONSTRUCTION. VERIFICATION SHALL INCLUDE BUT IS NOT LIMITED TO THE HORIZONTAL AND VERTICAL LOCATION OF EXISTING WATER LINE, SIZE MATERIAL, AND TYPE OF CONNECTION. CONTRACTOR SHALL PROVIDE REQUIRED CONNECTION COMPONENTS AS PART OF THE CONNECTION. ALL COSTS ASSOCIATED WITH FIELD VERIFICATION OF REQUIRED FITTINGS SHALL BE CONSIDERED INCIDENTAL TO THE COST OF THE CUT AND CAP WATERLINE 80 ITEM.
- CONTRACTOR SHALL FIELD VERIFY HORIZONTAL AND VERTICAL LOCATION OF EXISTING UTILITIES PRIOR TO EXCAVATION. LOCATIONS SHOWN ON PLANS ARE FOR INFORMATION ONLY.
- LIGHTED PAVEMENT MARKERS SHALL BE SOLARMARKERS MS-300 "YELLOW" AND MS-50 "YELLOW" OR APPROVED EQUAL. ANY ALTERNATIVE MARKER SHALL BE APPROVED BY THE PROJECT MANAGER.
- THE CONTRACTOR SHALL INSTALL THE LIGHTED PAVEMENT MARKERS PER MANUFACTURER'S SPECIFICATIONS AND RECOMMENDATIONS. ANY DEVIATION FROM THESE REQUIREMENTS WILL REQUIRE WRITTEN APPROVAL FROM THE PROJECT MANAGER.
- THE SURFACE AND DRILLED HOLE SHALL BE CLEANED OF ANY DEBRIS PRIOR TO INSTALLATION OF THE LIGHTED PAVEMENT MARKING. THIS WORK SHALL BE CONSIDERED INCIDENTAL TO LIGHTED PAVEMENT MARKER MS-300 OR LIGHTED PAVEMENT MARKER MS-50 AND NO ADDITIONAL PAYMENT WILL BE MADE.
- CONTRACTOR SHALL DELIVER AN ADDITIONAL 20% OF LIGHTED PAVEMENT MARKERS, BOTH MS-300 AND MS-50, TO THE CITY FOR FUTURE USE.
- CONTRACTOR SHALL SALVAGE LARGE PLANTER AND MOVE TO DESIGNATED LOCATION IN PLAN SET. THIS WORK IS CONSIDERED INCIDENTAL TO COMPLETION OF THE PROJECT AND NO ADDITIONAL PAYMENT WILL BE MADE.

UTILITY CONTACTS

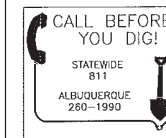
MONTANO, ANTHONY	OFFICE PHONE: (505) 768-2713 OFFICE FAX: 768-3529 ALMONTANO@ABQCNIA.ORG	ALBUQUERQUE BERNALILLO COUNTY WATER UTILITY AUTHORITY P.O. BOX 1293 ALBUQUERQUE, NM 87103
DUNLOP, ANDREW	OFFICE PHONE: (505) 280-8014 ANDREW.DUNLOP@PWC.COM	PWC ELECTRIC 4201 EDITH BLVD. NE ALBUQUERQUE, NM 87107
DUNLOP, JOE	OFFICE PHONE: (505) 697-3166 JOE.DUNLOP@NMGCO.COM	NEW MEXICO GAS COMPANY 4825 EDITH NE ALBUQUERQUE, NM 87107
BROWN, JOHN	CELL PHONE: (505) 450-2338 OFFICE FAX: (505) 314-0890 JOHN@BOCASSETS.COM	BOC ASSETS 505 MARQUETTE AVENUE NW SUITE 11-110A ALBUQUERQUE, NM 87102
CROWEL, DAVID	OFFICE PHONE: (505) 842-2911 OFFICE FAX: (505) 842-2890 DCROWEL@ATT.COM	AT&T RESOURCE SUPERVISOR 111 3RD STREET NW ALBUQUERQUE, NM 87103
DARNELL, ANDY	OFFICE PHONE: (505) 346-4470 OFFICE FAX: 348-8666 ANDY.DARNELL@VCI.COM	WCI WORLDWIDE OPERATIONS MANAGER 6001 MONDAY PARK NE ALBUQUERQUE, NM 87109
MORTUS, MIKE	OFFICE PHONE: (505) 761-6252 OFFICE FAX: (505) 761-0599 CELL: (505) 289-4006 MIKE_MORTUS@CABLE.COMCAST.COM	COMCAST CONSTRUCTION COORDINATOR 4811 MONTBEL PLACE NE ALBUQUERQUE, NM 87107
HARRISON, ROYAL	OFFICE PHONE: (505) 938-7339 OFFICE FAX: 938-7380 CELL: (505) 301-8120 ROYAL.HARRISON@WTELECOM.COM	TIME WARNER TELECOM OF NEW MEXICO SENIOR ENGINEER 5411 JEFFERSON STREET NE, STE. 200 ALBUQUERQUE, NM 87109
KELLY, LARRY	OFFICE PHONE: (505) 246-0501 OFFICE FAX: (505) 246-0479 CELL: (505) 278-3442 LARRY.KELLY@QWEST.COM	QWEST LONG DISTANCE SR. OPERATIONS TECH 400 TIERRAS NW SUITE 570 ALBUQUERQUE, NM 87102
MAUELLER, RICK	OFFICE PHONE: (505) 217-0039 OFFICE FAX: 217-6048 RICHARD.MAUELLER@PAETEC.COM	PAETEC COMMUNICATION FIELD TECHNICIAN 505 MARQUETTE NW (COMPASS BANK) SUITE 1600 ALBUQUERQUE, NM 87102
YOUNG, BEVERLY	OFFICE PHONE: (505) 245-5934 OFFICE FAX: (505) 245-6733 CELL: (505) 716-7529 BEVERLY.YOUNG@QWEST.COM	QWEST SR DESIGN NW ENGINEERING/PLANNING 400 TIERRAS NW ALBUQUERQUE, NM 87102

INCIDENTAL ITEMS

- MATCH EXISTING PAVEMENTS. SEE GENERAL NOTE 9, THIS SHEET
- CLEAR ZONE SHIELDING. SEE GENERAL NOTE 17, THIS SHEET
- PROVIDE WATER SHUT-OFF PLAN. SEE GENERAL NOTE 20, THIS SHEET
- FIELD VERIFY EXISTING WATERLINE FEATURES. GENERAL NOTE 21, THIS SHEET
- RESET EXISTING LARGE PLANTER. SEE GENERAL NOTE 27, THIS SHEET

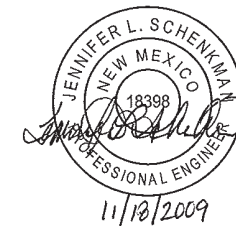
SALVAGEABLE ITEMS

- EXISTING LARGE PLANTER. SEE GENERAL NOTE 27, THIS SHEET



CITY OF ALBUQUERQUE MUNICIPAL DEVELOPMENT DEPARTMENT TRANSPORTATION DEVELOPMENT DIVISION	
TITLE: CENTRAL AVE PEDESTRIAN IMPROVEMENTS SE CORNER OF CENTRAL AVE AND 1ST ST	
LEGEND, GENERAL NOTES, INCIDENTALS & UTILITY OWNERS	
Design Review Committee	City Engineer Approval
City Project No. 5011.20	Zone Map No. K-14-Z
Sheet 2	Of 9

BID ITEM NO.	COA ITEM NO.	ITEM DESCRIPTION	ITEM UNIT	ROADWAY ESTIMATE	ROADWAY FINAL	CONST ENG ESTIMATE	CONST ENG FINAL	ESTIMATED TOTAL	FINAL TOTAL
1	4.010	CONSTRUCTION STAKING, COMPL.	L.S.	1				1	
2	6.050	CONSTRUCTION MOBILIZATION, COMPL.	L.S.			1		1	
3	6.060	CONSTRUCTION DEMOBILIZATION, COMPL.	L.S.			1		1	
4	19.010	CONST. TRAFFIC CONTROL & BARRICADING, COMPL.	L.S.	1				1	
5	201.010	SITE CLEARING AND GRUBBING, COMPL.	A.C.	0.25				0.25	
6	201.060	EROSION CONTROL INCL PLANT, LABOR, EQUIP & MATERIAL	L.S.	1				1	
7	201.061	EROSION CTRL SILT FENCE, 3' HIGH, W/5' STEEL POSTS @ 10' O.C., CIP	L.F.	90				90	
8	204.010	FILL, EXCAVATION, BACKFILL, U, >2'	C.Y.	10				10	
9	340.010	SIDEWALK, 4" THICK, PCC, INCL. SUBGRADE COMPACTION, CIP. SD 2430	S.Y.	10				10	
10	343.050	EXISTING PAVEMENT, PCC, >4", SAWCUT, REMOVE & DISPOSE, COMPL.	S.Y.	24				24	
11	510.110	STRUCTURAL REINFORCED PC CONCRETE	C.Y.	10				10	
12	801.111	WATER VALVE BOX, ADJUST TO GRADE, CIP.	EACH	2				2	
13		CONTRACTOR PROCESS QUALITY CONTROL	L.S.			1		1	
14		REMOVAL OF STRUCTURES AND OBSTRUCTIONS	L.S.	1				1	
15		METAL RAILING, PEDESTRIAN	L.F.	20				20	
16		LIGHTED PAVEMENT MARKER MS-50, COMPLETE	EACH	50				50	
17		LIGHTED PAVEMENT MARKER MS-300, COMPLETE	EACH	15		1		16	
18		CUT AND CAP EXISTING WATERLINE	EACH	2				2	



HDR		3155 KILBURN BLVD., NE SUITE 1000 ALBUQUERQUE, NM 87110 PHONE: (505) 833-5400 FAX: (505) 833-5449	
CITY OF ALBUQUERQUE MUNICIPAL DEVELOPMENT DEPARTMENT TRANSPORTATION DEVELOPMENT DIVISION			
TITLE: CENTRAL AVE PEDESTRIAN IMPROVEMENTS SE CORNER OF CENTRAL AVE AND 1ST ST			
SUMMARY OF QUANTITIES			
Design Review Committee	City Engineer Approval	VS/BS/LS	VS/BS/LS
City Project No.	5011.20	Zone Map No.	K-14-Z
		Sheet	3 of 9

AS BUILT INFORMATION		BENCH MARKS		SURVEY INFORMATION		ENGINEER'S SEAL	
CONTRACTOR	DATE	NO.	BY	NO.	BY	NO.	BY
MICRO-FILM INFORMATION							
DESIGNED BY: ALS	DATE: 07/22/09						
DRAWN BY: ALS	DATE: 07/29/09						
CHECKED BY: ELP	DATE: 08/17/09						

510.11 - STRUCTURAL REINFORCED PC CONCRETE						
NORTHING	EASTING	TO	NORTHING	EASTING	CY	REMARKS
1486543.479	1521841.829	-	1486546.825	1521846.389	3.55	FLAG POLE FOUNDATION
1486542.389	1521848.919	-	1486559.409	1521871.057	0.88	BOTTOM LANDING
1486555.439	1521857.391	-	1486558.422	1521870.895	0.46	BOTTOM STAIR/FACE
1486546.166	1521851.078	-	1486557.271	1521870.705	0.98	2ND STAIR/FACE
1486542.060	1521851.067	-	1486556.119	1521870.325	1.13	3RD STAIR/FACE
1486541.883	1521852.215	-	1486554.968	1521870.325	1.10	TOP STAIR/FACE
1486541.532	1521854.608	-	1486552.577	1521869.967	0.70	TOP LANDING
TOTAL					8.80	
USE					10	

340.010 - SIDEWALK, 4" THICK, PCC, INCL. SUBGRADE COMPACTION, CIP, SD 2430						
NORTHING	EASTING	TO	NORTHING	EASTING	SY	REMARKS
1486543.735	1521840.159	-	1486559.583	1521871.086	8.78	LANDING
TOTAL					8.78	
USE					10	

XXXX.XXX - METAL RAILING, PEDESTRIAN						
NORTHING	EASTING	TO	NORTHING	EASTING	LF	REMARKS
1486542.419	1521850.111	-	1486541.937	1521853.244	3.17	HANDRAIL
1486546.782	1521850.255	-	1486545.105	1521854.252	4.33	HANDRAIL
1486556.412	1521857.056	-	1486551.801	1521860.055	5.50	HANDRAIL
1486559.438	1521870.849	-	1486554.007	1421869.954	5.50	HANDRAIL
TOTAL					18.5	
USE					20	

XXXX.XXX - CUT AND CAP EXISTING WATERLINE				
NORTHING	EASTING	EACH	REMARKS	
1486544.021	1521845.448	1		
1486555.393	1521854.804	1		
TOTAL		2		
USE		2		

801.111 - WATER VALVE BOX, ADJUST TO GRADE, CIP.				
NORTHING	EASTING	EACH	REMARKS	
1486544.021	1521845.448	1		
1486555.393	1521854.804	1		
TOTAL		2		
USE		2		

LIGHTED PAVEMENT MARKER MS-300 COMPLETE		
DESCRIPTION	EACH	REMARKS
TOP STAIR	10	
SECOND STAIR	0	
FIRST STAIR	1	
20% REPLACEMENT	3	
TOTAL	14	
USE	15	

* ADDITIONAL 20% FOR DELIVERY TO THE CITY

LIGHTED PAVEMENT MARKER MS-50 COMPLETE		
DESCRIPTION	EACH	REMARKS
TOP STAIR	13	
SECOND STAIR	13	
FIRST STAIR	9	
LANDING	3	
20% REPLACEMENT	9	
TOTAL	47	
USE	50	

* ADDITIONAL 20% FOR DELIVERY TO THE CITY

LUMP SUM ITEMS				
ITEM NO.	DESCRIPTION	QUANTITY	UNIT	REMARKS
4.010	CONST. STAKING, COMPL.	1	L.S.	
6.050	CONST. MOBILIZATION, COMPL.	1	L.S.	
6.060	CONST. DEMOBILIZATION, COMPL.	1	L.S.	
19.010	CONST. TRAFFIC CONTROL & BARRICADING, COMPL.	1	L.S.	
201.060	EROSION CNTRL INCL PLANT, LABOR, EQUIP & MAT'L	1	L.S.	
	CONTRACTOR PROCESS QUALITY CONTROL	1	L.S.	
	REMOVAL OF STRUCTURES AND OBSTRUCTIONS	1	L.S.	

201.010 - SITE CLEARING & GRUBBING, COMPL.						
NORTHING	EASTING	TO	NORTHING	EASTING	AC	REMARKS
1486543.735	1521840.159	-	1486559.583	1521871.086	0.25	
TOTAL					0.25	
USE					0.25	

201.061 - EROSION CONTROL SILT FENCE, 3' HIGH, W/5' STEEL POSTS @ 10' O.C., CIP						
NORTHING	EASTING	TO	NORTHING	EASTING	L.F.	REMARKS
1486543.735	1521840.159	-	1486559.583	1521871.086	90.00	
TOTAL					90.00	
USE					90	

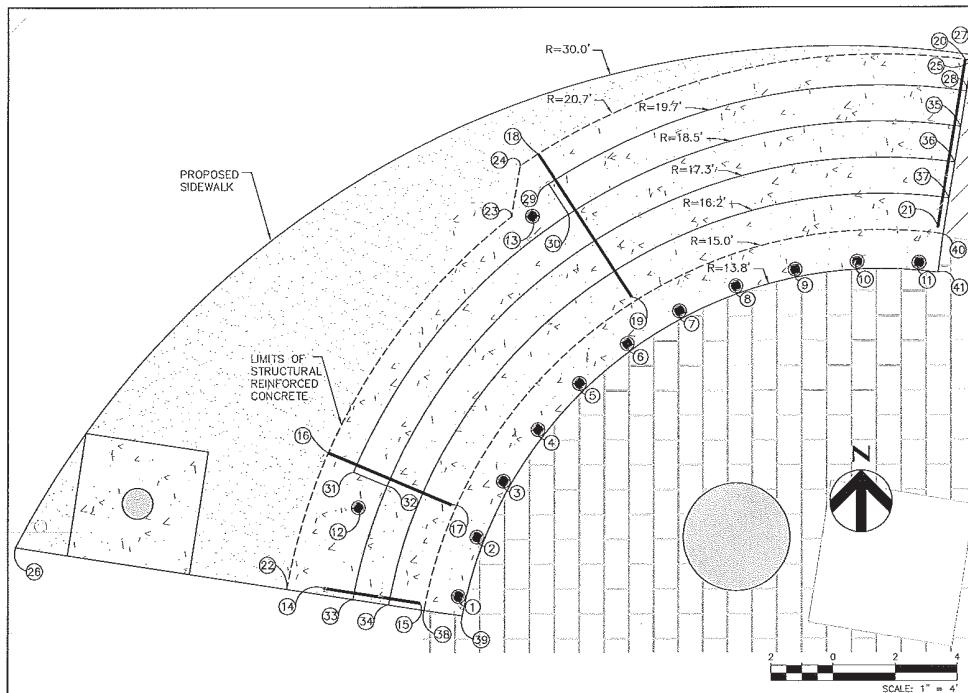
204.010 - FILL, EXCAV, BACKFILL, U, >2'						
NORTHING	EASTING	TO	NORTHING	EASTING	C.Y.	REMARKS
1486543.735	1521840.159	-	1486559.583	1521871.086	10.00	
TOTAL					10.00	
USE					10	

343.050 - EX PVMT, PCC, >4", SAWCUT, REMOVE & DISPOSE, COMPL.						
NORTHING	EASTING	TO	NORTHING	EASTING	S.Y.	REMARKS
1486543.735	1521840.159	-	1486559.583	1521871.086	23.42	
TOTAL					23.42	
USE					24	



CITY OF ALBUQUERQUE MUNICIPAL DEVELOPMENT DEPARTMENT TRANSPORTATION DEVELOPMENT DIVISION	
TITLE: CENTRAL AVE PEDESTRIAN IMPROVEMENTS SE CORNER OF CENTRAL AVE AND 1ST ST MISCELLANEOUS QUANTITIES	
Design Review Committee	City Engineer Approval
Zone Map No. K-14-Z	Sheet 5 of 9

DMD/Construction 8007.11



STRUCT. REINF. CONC. BOUNDARY			
POINT	NORTHING	EASTING	REMARKS
22	1486542.389	1521848.019	ANGLE POINT
23	1486554.391	1521856.202	ANGLE POINT
24	1486558.033	1521856.479	ANGLE POINT
25	1486559.409	1521871.057	

SIDEWALK				
POINT	NORTHING	EASTING	ELEVATION	REMARKS
26	1486543.735	1521840.169	4956.18	MATCH EXISTING
27	1486559.583	1521871.086	4953.95	MATCH EXISTING

LIGHTED MARKERS - MS-300				
POINT	NORTHING	EASTING	ELEVATION	REMARKS
1	1486542.154	1521854.485	4956.07	YELLOW
2	1486544.062	1521855.080	4956.07	RED
3	1486545.866	1521855.940	4956.08	YELLOW
4	1486547.529	1521857.048	4956.08	RED
5	1486549.017	1521858.382	4956.09	YELLOW
6	1486550.300	1521859.914	4956.09	RED
7	1486551.352	1521861.613	4956.09	YELLOW
8	1486552.151	1521863.444	4956.10	RED
9	1486552.681	1521865.371	4956.10	YELLOW
10	1486552.932	1521867.354	4956.11	RED
11	1486552.898	1521869.392	4956.11	YELLOW
12	1486545.016	1521851.233	4955.07	RED
13	1486554.405	1521856.871	4954.64	YELLOW

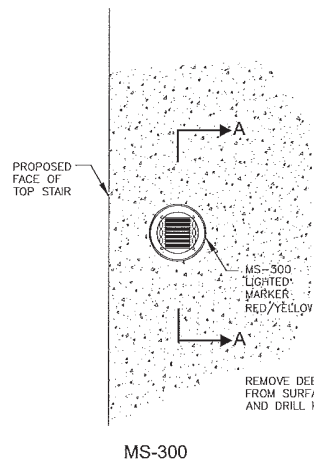
NOTE: NORTHING, EASTING, & ELEVATION TAKEN AT CENTER OF LIGHTED MARKER.

STAIRS				
POINT	NORTHING	EASTING	ELEVATION	REMARKS
28	1486558.422	1521870.895	4954.01	
29	1486555.439	1521857.391	4954.51	
30	1486554.461	1521858.027	4954.53	
31	1486548.166	1521851.078	4955.03	
32	1486545.711	1521852.161	4955.06	
33	1486542.060	1521851.062	4955.51	
34	1486541.886	1521852.218	4956.03	
35	1486557.271	1521870.705	4955.03	
36	1486556.119	1521870.515	4955.06	
37	1486554.968	1521870.325	4956.08	
38	1486541.706	1521853.369	4956.11	
39	1486541.532	1521854.608	4956.13	MATCH EXISTING
40	1486553.616	1521870.135	4956.06	
41	1486552.677	1521869.967	4956.08	MATCH EXISTING

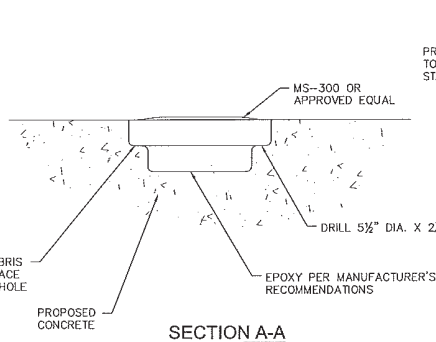
INSTALLATION NOTES:

1. LIGHTED MARKER SHALL BE MS-300 FOR THE TOP STAIR AND MS-50 FOR THE FACE OF EACH STAIR OR APPROVED EQUAL.
2. LENS COLOR SHALL BE YELLOW OR RED.
3. CONTRACTOR TO DRILL APPROXIMATELY 5 1/2" DIA. HOLE X 2 3/8" DEPTH AND SET MS-300 MARKER WITH EPOXY.
4. CONTRACTOR TO DRILL APPROXIMATELY 2" DIA. HOLE X 1 1/4" DEPTH AND SET MS-50 MARKER WITH EPOXY.
5. MS-300 MARKERS SHALL BE PLACED 1.0' FROM THE FACE OF THE TOP STAIR.
6. MS-50 MARKERS SHALL BE PLACED ON THE FACE OF EACH STAIR, 2 1/2" BELOW THE TOP OF EACH STAIR, SPACED AT 2' INCREMENTS.
7. SET LIGHTED MS-300 MARKER FLUSH TO CONCRETE SURFACE.

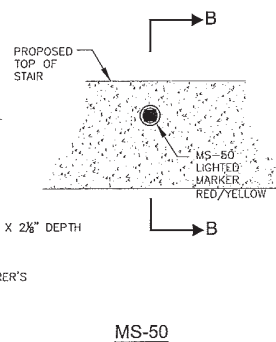
HANDRAIL			
POINT	NORTHING	EASTING	REMARKS
14	1486542.419	1521850.111	
15	1486541.937	1521853.244	
16	1486546.782	1521850.255	
17	1486545.105	1521854.252	
18	1486556.412	1521857.056	
19	1486551.801	1521860.055	
20	1486559.438	1521870.849	
21	1486554.007	1521869.954	



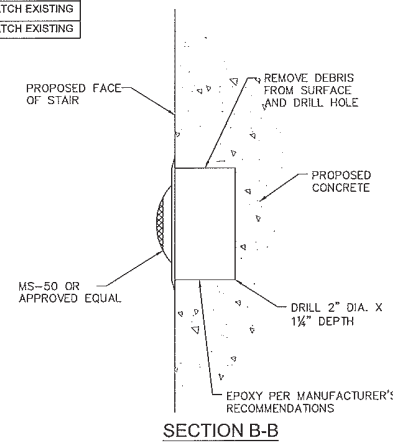
MS-300



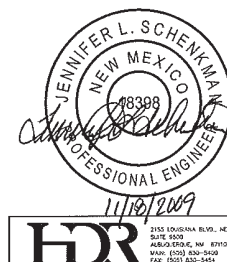
SECTION A-A



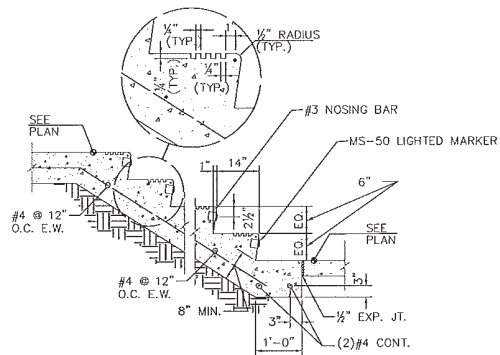
MS-50



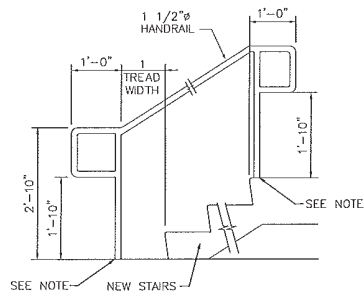
SECTION B-B



HDR 2150 LUISIANA BLVD., NE SUITE 500 ALBUQUERQUE, NM 87103 PHONE: (505) 424-5400 FAX: (505) 424-5454		CITY OF ALBUQUERQUE MUNICIPAL DEVELOPMENT DEPARTMENT TRANSPORTATION DEVELOPMENT DIVISION TITLE: CENTRAL AVE PEDESTRIAN IMPROVEMENTS SE CORNER OF CENTRAL AVE AND 1ST ST MISCELLANEOUS DETAILS	
Design Review Committee	City Engineer Approval	City Project No.	Zone Map No.
		5011.20	K-14-Z
Sheet	of	6	9

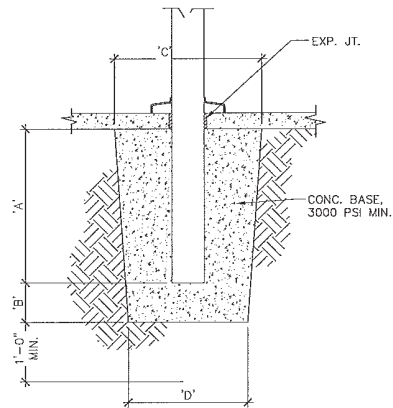


EXTERIOR CONCRETE
STAIR SECTION
N.T.S.



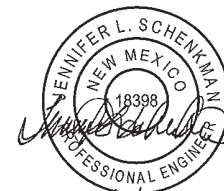
STAIR RAILING DETAIL
N.T.S.

NOTE: CORE DRILL CONCRETE @ 1.5x RAIL POST DIA & EPOXY GROUT RAIL POST.



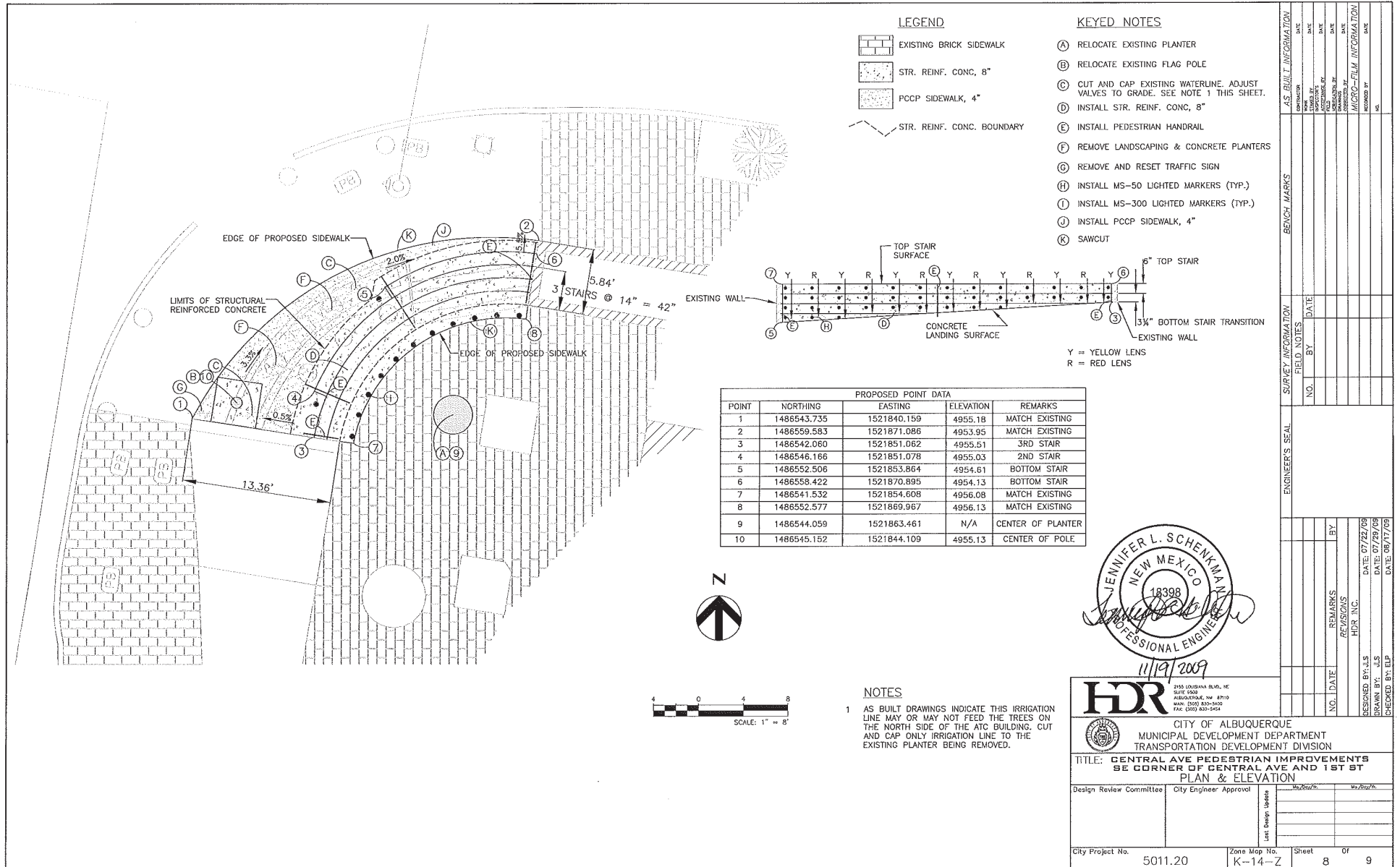
FLAG POLE FOUNDATION DETAIL

STANDARD BASE DIMENSIONS				
EXPOSED HEIGHT	OVERALL HEIGHT	'A'	'B'	'D'
20'	23'	3'	6"	24"
25'	28'	3'	6"	24"
30'	33'	3'	6"	24"
35'	38'-6"	3'-6"	6"	30"
40'	44'	4'	6"	36"
45'	49'-6"	4'-6"	6"	42"
50'	55'	5'	8"	48"



CITY OF ALBUQUERQUE MUNICIPAL DEVELOPMENT DEPARTMENT TRANSPORTATION DEVELOPMENT DIVISION	
TITLE: CENTRAL AVE PEDESTRIAN IMPROVEMENTS SE CORNER OF CENTRAL AVE AND 1ST ST MISCELLANEOUS DETAILS	
Design Review Committee	City Engineer Approval
City Project No. 5011.20	Zone Map No. K-14-Z
Sheet 7	Of 9

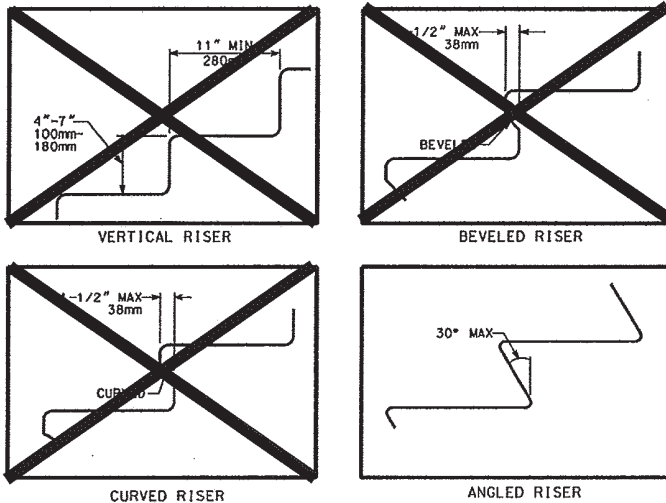
DMD/Construction 8007.11



DMD/Construction 8007.11

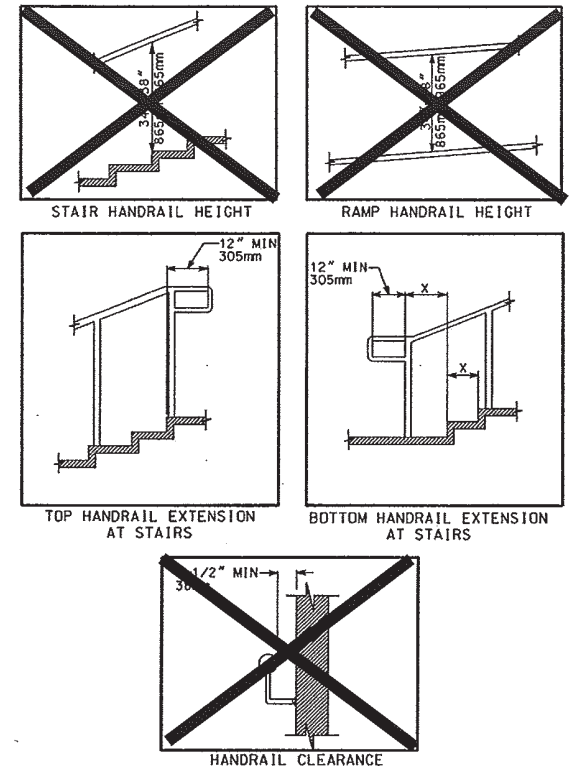
STAIRWAY REQUIREMENTS

1. STAIRWAYS SHALL BE 36 INCHES (915 mm) WIDE MINIMUM BETWEEN HANDRAILS.
2. ALL STEPS ON A FLIGHT OF STAIRS SHALL HAVE UNIFORM RISER HEIGHTS AND UNIFORM TREAD DEPTH. RISERS SHALL BE 4 INCHES (100 mm) HIGH MINIMUM AND 7 INCHES (180 mm) MAXIMUM. TREADS SHALL BE 11 INCHES (280 mm) DEEP MINIMUM MEASURED FROM RISER TO RISER.
3. OPEN RISERS SHALL NOT BE PERMITTED.
4. STAIR TREADS SHALL BE STABLE, FIRM, AND SLIP RESISTANT.
5. THE RADIUS OF CURVATURE AT THE LEADING EDGE OF THE TREAD SHALL BE $\frac{1}{2}$ INCH (13 mm) MAXIMUM. NOSINGS THAT PROJECT BEYOND RISERS SHALL HAVE THE UNDERSIDE OF THE LEADING EDGE CURVED OR BEVELED. RISERS SHALL BE PERMITTED TO SLOPE UNDER THE TREAD AT AN ANGLE OF 30 DEGREES MAXIMUM FROM THE VERTICAL. THE PERMITTED PROJECTION OF THE NOSING SHALL BE $\frac{1}{2}$ INCHES (38 mm) MAXIMUM BEYOND THE TREAD BELOW.
6. HANDRAILS SHALL BE PROVIDED ON BOTH SIDES OF STAIRS.
7. OUTDOOR STAIRS AND OUTDOOR APPROACHES TO STAIRS SHALL BE DESIGNED SO THAT WATER WILL NOT ACCUMULATE ON WALKING SURFACES.



HANDRAIL REQUIREMENTS

1. HANDRAILS SHALL BE PROVIDED ON BOTH SIDES OF STAIRS AND RAMPS.
2. HANDRAILS SHALL BE CONTINUOUS WITHIN THE FULL LENGTH OF EACH STAIR FLIGHT OR RAMP RUN. INSIDE HANDRAILS ON SWITCH BACK OR DOGLEG STAIRS OR RAMPS SHALL BE CONTINUOUS BETWEEN FLIGHTS OR RUNS.
3. TOP OF GRIPPING SURFACE OF HANDRAILS SHALL BE 34 INCHES (865 mm) MINIMUM AND 38 INCHES (965 mm) MAXIMUM VERTICALLY ABOVE STAIR NOSINGS AND RAMP SURFACES. HANDRAILS SHALL BE AT A CONSISTENT HEIGHT ABOVE STAIR NOSINGS AND RAMP SURFACES.
4. CLEAR SPACE BETWEEN HANDRAIL AND WALL SHALL BE $1\frac{1}{2}$ INCHES (38 mm) MINIMUM.
5. GRIPPING SURFACES SHALL BE CONTINUOUS, WITHOUT INTERRUPTION BY NEWEL POSTS, OTHER CONSTRUCTION ELEMENTS, OR OBSTRUCTIONS. EXCEPTION: HANDRAIL BRACKETS OR BALUSTERS ATTACHED TO THE BOTTOM SURFACE OF THE HANDRAIL SHALL NOT BE CONSIDERED OBSTRUCTIONS PROVIDED THEY COMPLY WITH THE FOLLOWING CRITERIA:
 - A. NOT MORE THAN 20 PERCENT OF THE HANDRAIL LENGTH IS OBSTRUCTED.
 - B. HORIZONTAL PROJECTIONS BEYOND THE SIDES OF THE HANDRAIL OCCUR $2\frac{1}{2}$ INCHES (64 mm) MINIMUM BELOW THE BOTTOM OF THE HANDRAIL, AND
 - C. EDGES HAVE A $\frac{1}{8}$ INCH (3.2 mm) MINIMUM RADIUS.
6. HANDRAILS SHALL HAVE A CIRCULAR CROSS SECTION WITH AN OUTSIDE DIAMETER OF $1\frac{1}{2}$ INCH (32 mm) MINIMUM AND 2 INCHES (51 mm) MAXIMUM, OR SHALL PROVIDE EQUIVALENT GRASPABILITY. EXCEPTION: HANDRAILS WITH OTHER SHAPES SHALL BE PERMITTED PROVIDED THEY HAVE A PERIMETER DIMENSION OF 4 INCHES (100 mm) MINIMUM AND $6\frac{1}{4}$ INCHES (160 mm) MAXIMUM, AND PROVIDED THEIR LARGEST CROSS-SECTION DIMENSION IS $2\frac{1}{4}$ INCHES (57 mm) MAXIMUM.
7. HANDRAILS, AND ANY WALL OR OTHER SURFACES ADJACENT TO THEM, SHALL BE FREE OF ANY SHARP OR ABRASIVE ELEMENTS. EDGES SHALL HAVE $\frac{1}{8}$ INCH (3.2 mm) MINIMUM RADIUS.
8. HANDRAILS SHALL NOT ROTATE WITHIN THEIR FITTINGS.
9. HANDRAILS FOR STAIRS AND RAMPS SHALL HAVE EXTENSIONS. EXCEPTIONS:
 - A. EXTENSIONS ARE NOT REQUIRED FOR CONTINUOUS HANDRAILS AT THE INSIDE TURN OF STAIRS AND RAMPS.
 - B. IN ALTERATIONS, FULL EXTENSIONS OF HANDRAILS SHALL NOT BE REQUIRED WHERE SUCH EXTENSIONS WOULD BE HAZARDOUS OR IMPOSSIBLE DUE TO PLAN CONFIGURATION.
10. RAMP HANDRAILS SHALL EXTEND HORIZONTALLY 12 INCHES (305 mm) MINIMUM BEYOND THE TOP AND BOTTOM OF RAMP RUNS. SUCH EXTENSIONS SHALL RETURN TO A WALL, GUARD, OR THE WALKING SURFACE, OR SHALL BE CONTINUOUS TO THE HANDRAIL OF AN ADJACENT RAMP RUN.
11. AT THE TOP OF A STAIR FLIGHT, HANDRAILS SHALL EXTEND HORIZONTALLY ABOVE THE LANDING FOR 12 INCHES (305 mm) MINIMUM BEGINNING DIRECTLY ABOVE THE FIRST RISER NOSING. SUCH EXTENSIONS SHALL RETURN TO A WALL, GUARD, OR THE WALKING SURFACE, OR SHALL BE CONTINUOUS TO THE HANDRAIL OF AN ADJACENT STAIR FLIGHT.
12. AT THE BOTTOM OF A STAIR FLIGHT, HANDRAILS SHALL EXTEND AT THE SLOPE OF THE STAIR FLIGHT FOR A HORIZONTAL DISTANCE EQUAL TO ONE TREAD DEPTH BEYOND THE LAST RISER NOSING. SUCH EXTENSIONS SHALL CONTINUE WITH A HORIZONTAL EXTENSION OR SHALL BE CONTINUOUS TO THE HANDRAIL OF AN ADJACENT STAIR FLIGHT OR SHALL RETURN TO A WALL, GUARD, OR THE WALKING SURFACE. THE HORIZONTAL EXTENSION OF A HANDRAIL SHALL BE 12 INCHES (305 mm) LONG MINIMUM AND A HEIGHT EQUAL TO THAT OF THE SLOPING PORTION OF THE HANDRAIL AS MEASURED ABOVE THE STAIR NOSINGS. SUCH EXTENSIONS SHALL RETURN TO A WALL, GUARD, OR THE WALKING SURFACE, OR SHALL BE CONTINUOUS TO THE HANDRAIL OF AN ADJACENT STAIR FLIGHT.



NO.	DATE	REV. BY	DESCRIPTION
REVISIONS (OR CHANGE NOTICES)			
NEW MEXICO DEPARTMENT OF TRANSPORTATION			
PEDESTRIAN ACCESS DETAILS			
STAIRWAY & HANDRAIL REQUIREMENTS			
APPROVAL	12/3/03		
RECOMMENDED	DATE		
N.T.S. PAD-001 01/01/04 Sheet 8 of 10			