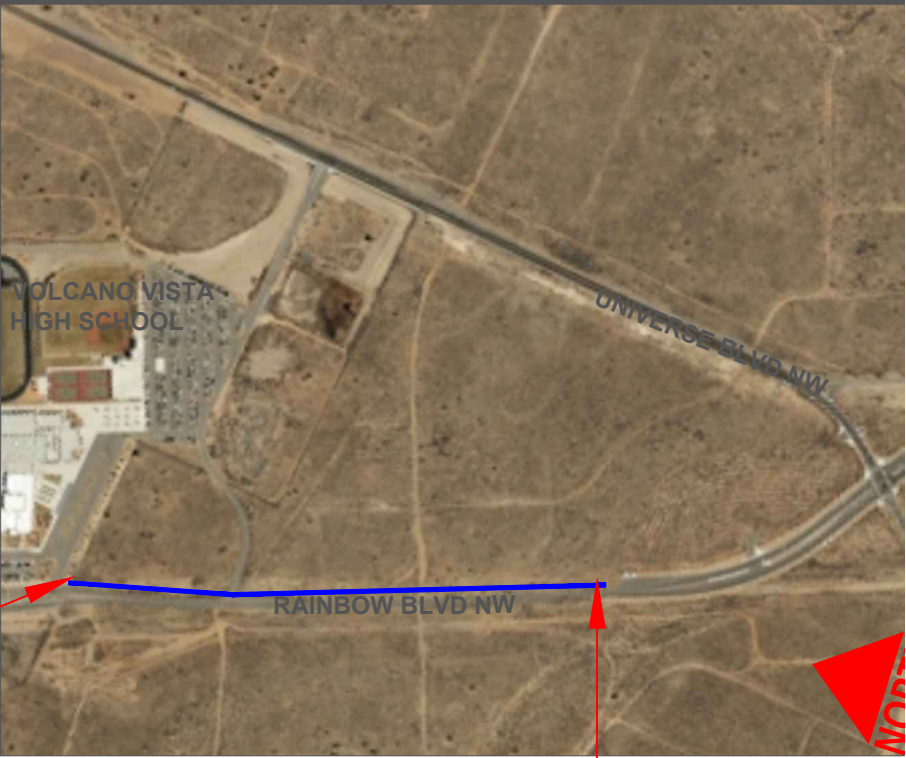


CITY OF ALBUQUERQUE
DEPARTMENT OF MUNICIPAL DEVELOPMENT
CONSTRUCTION PLANS FOR
RAINBOW BLVD IMPROVEMENTS



B.O.P



VICINITY MAP

E.O.P

INDEX OF SHEETS

- 1. COVER SHEET
- 2. PROJECT OVERVIEW
- 3. CONSTRUCTION PLANS -1
- 4. CONSTRUCTION PLANS -2
- 5. CONSTRUCTION PLANS- 3
- 6. SECTION DETAILS

NOTE:
STRIPING LAYOUT TO BE VERIFIED BY
PROJECT MANAGER PRIOR TO
INSTALLATION



CITY OF ALBUQUERQUE
MUNICIPAL DEVELOPMENT DEPARTMENT
ENGINEERING DIVISION

TITLE: RAINBOW IMPROVEMENTS

DRAWN BY: JOSEPH SING

CHECKED BY: ANDREW VAROZ

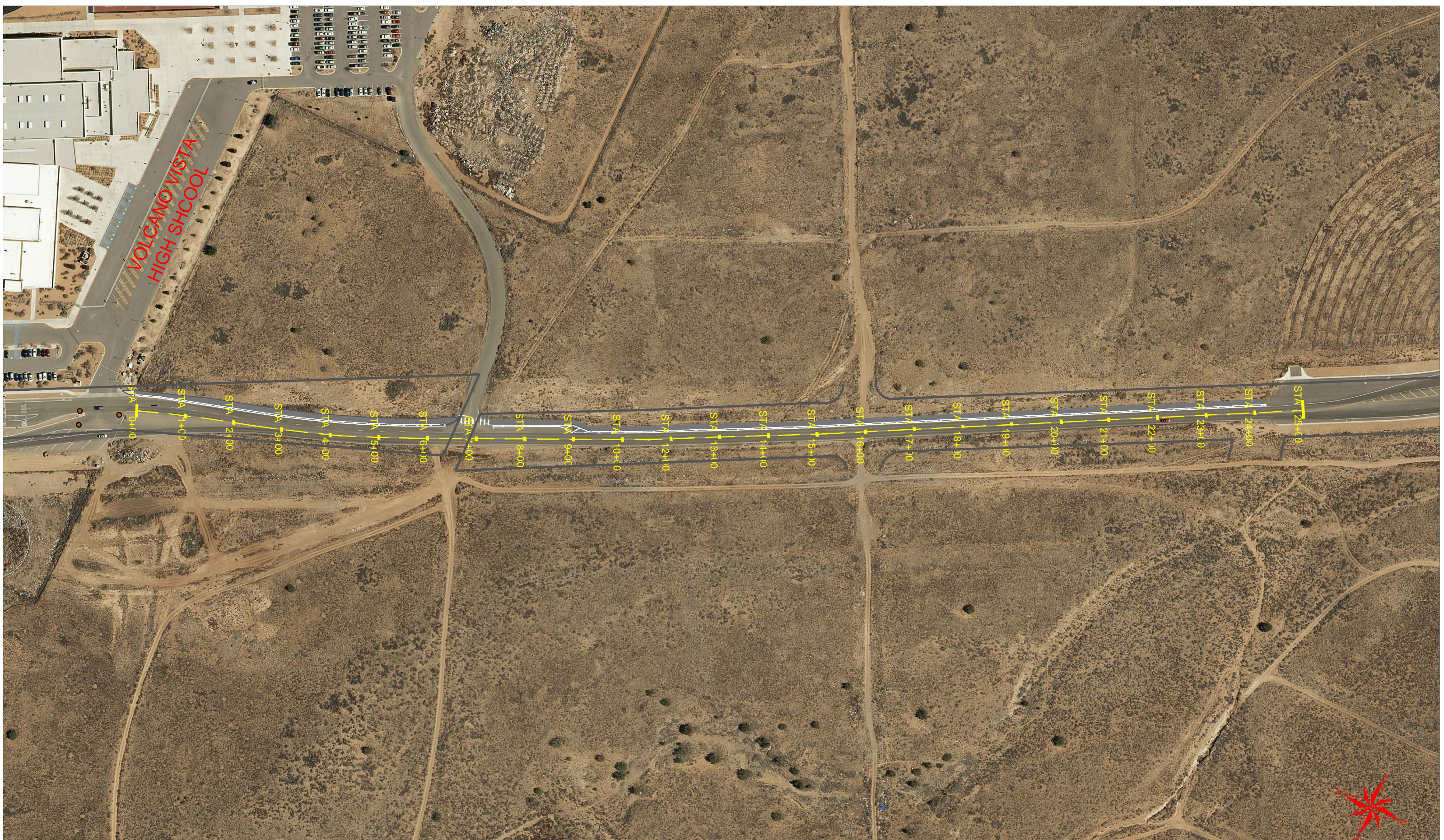
CHECKED DATE: OCT 4 2017

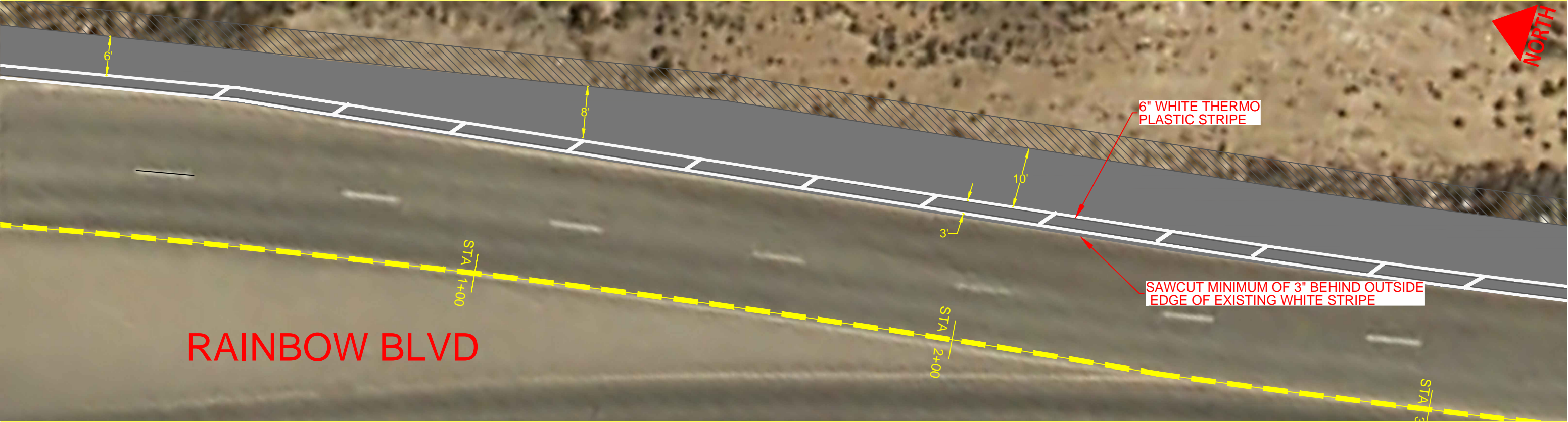
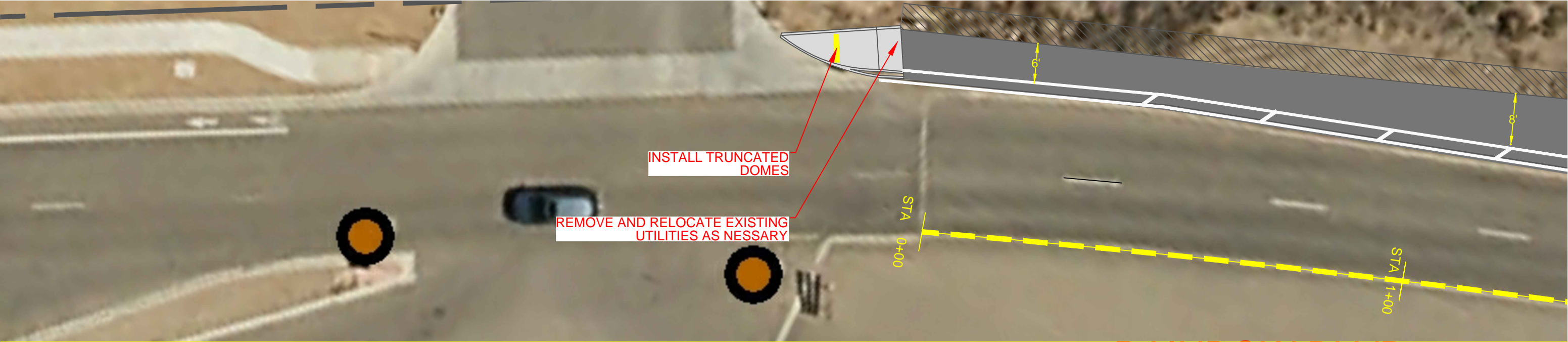
ZONE MAP NO.A-10-Z

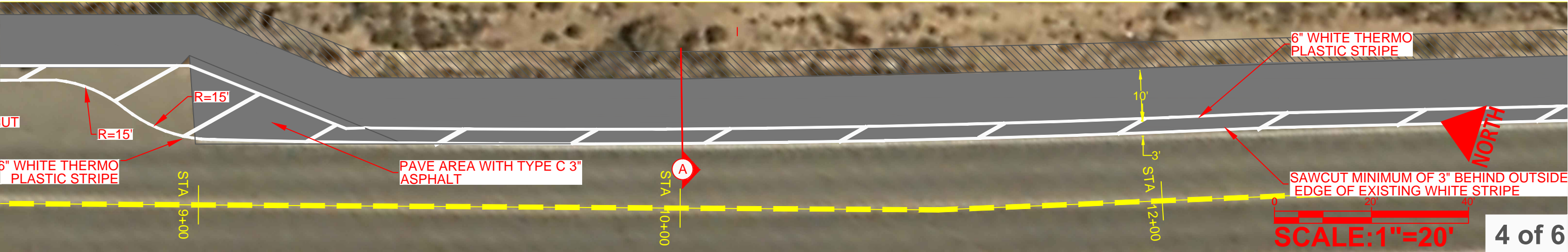
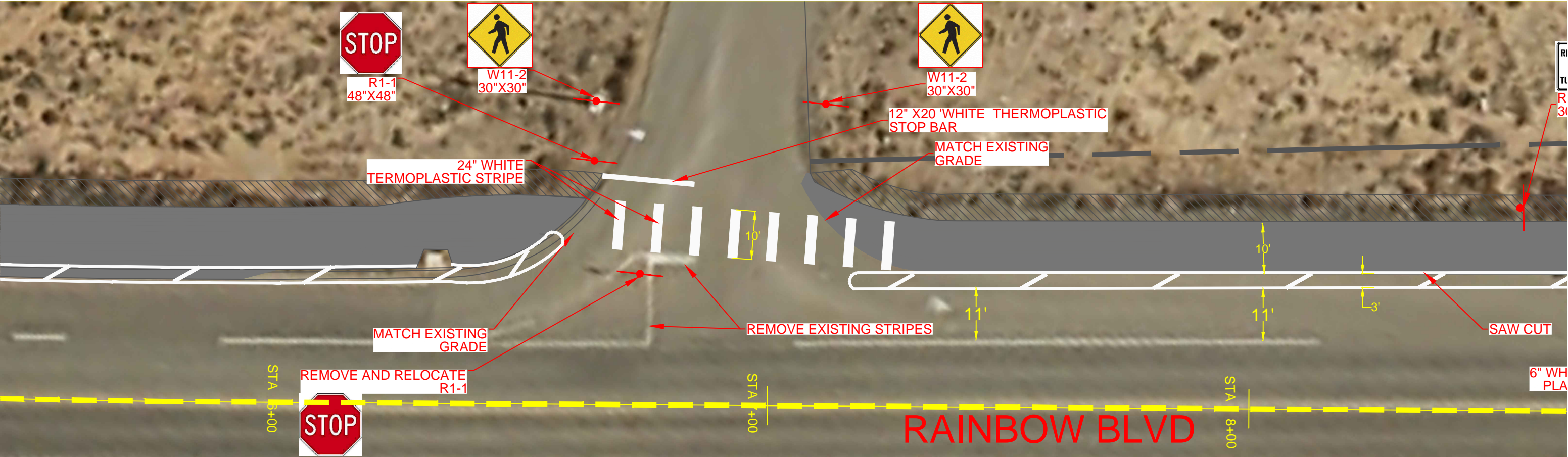
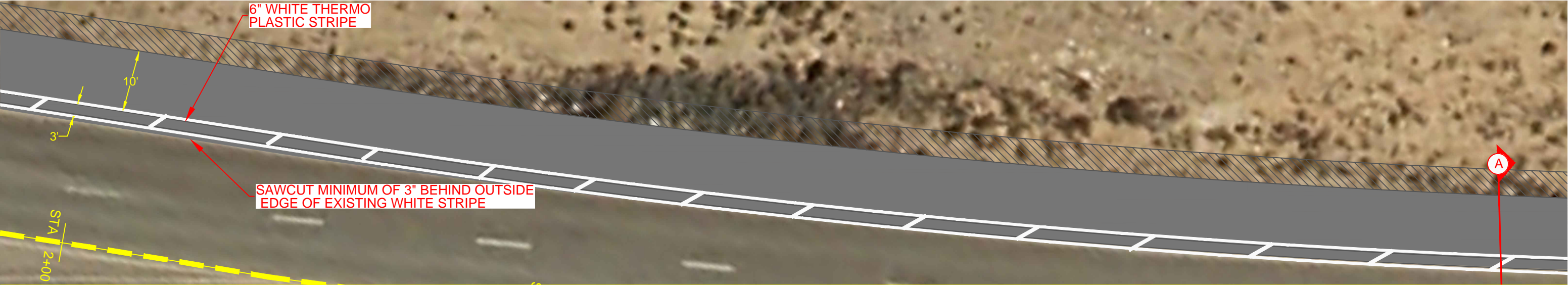
PRINTED ON 11/15/1

SCALE:

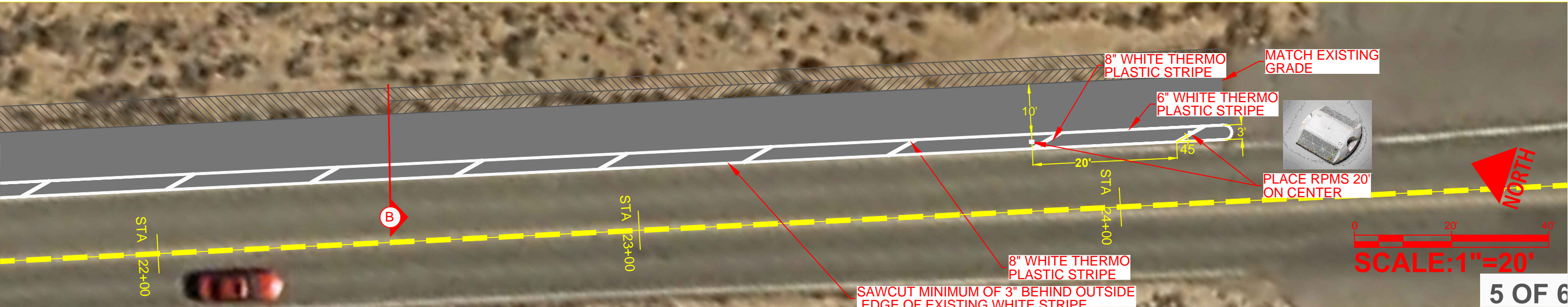
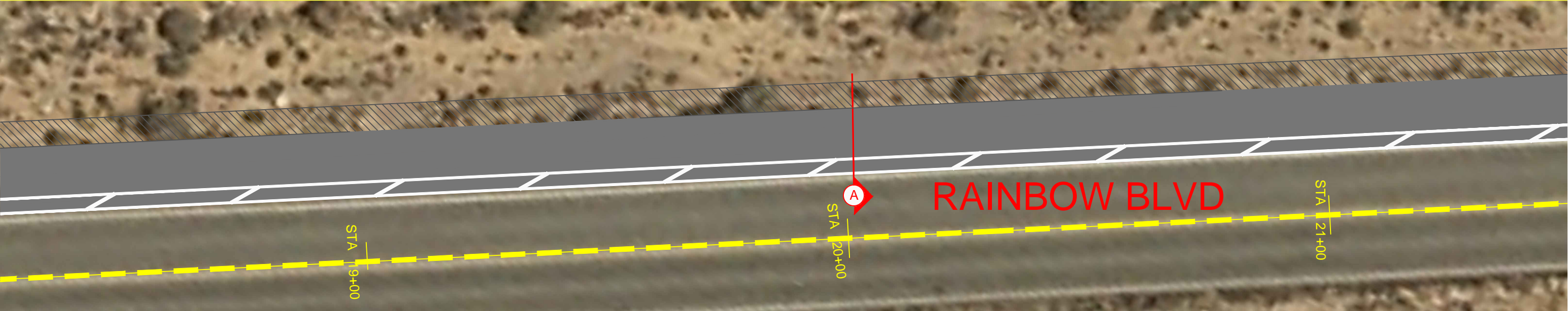
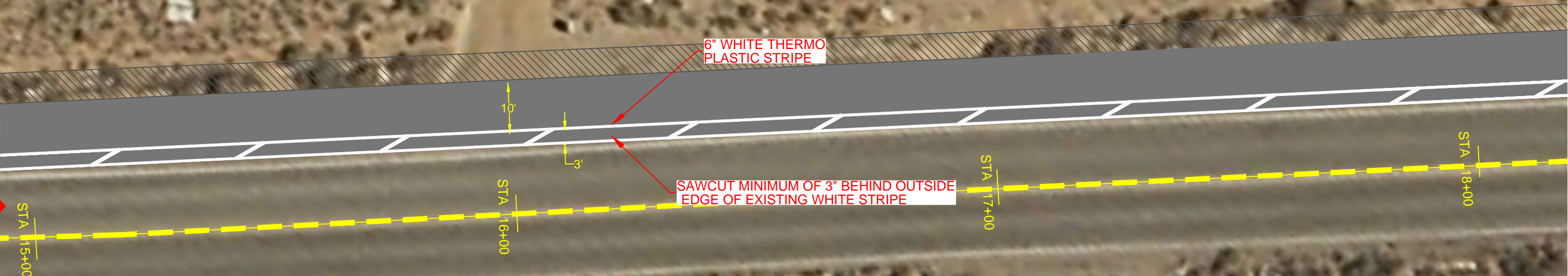
SHEET: **1** OF **6**

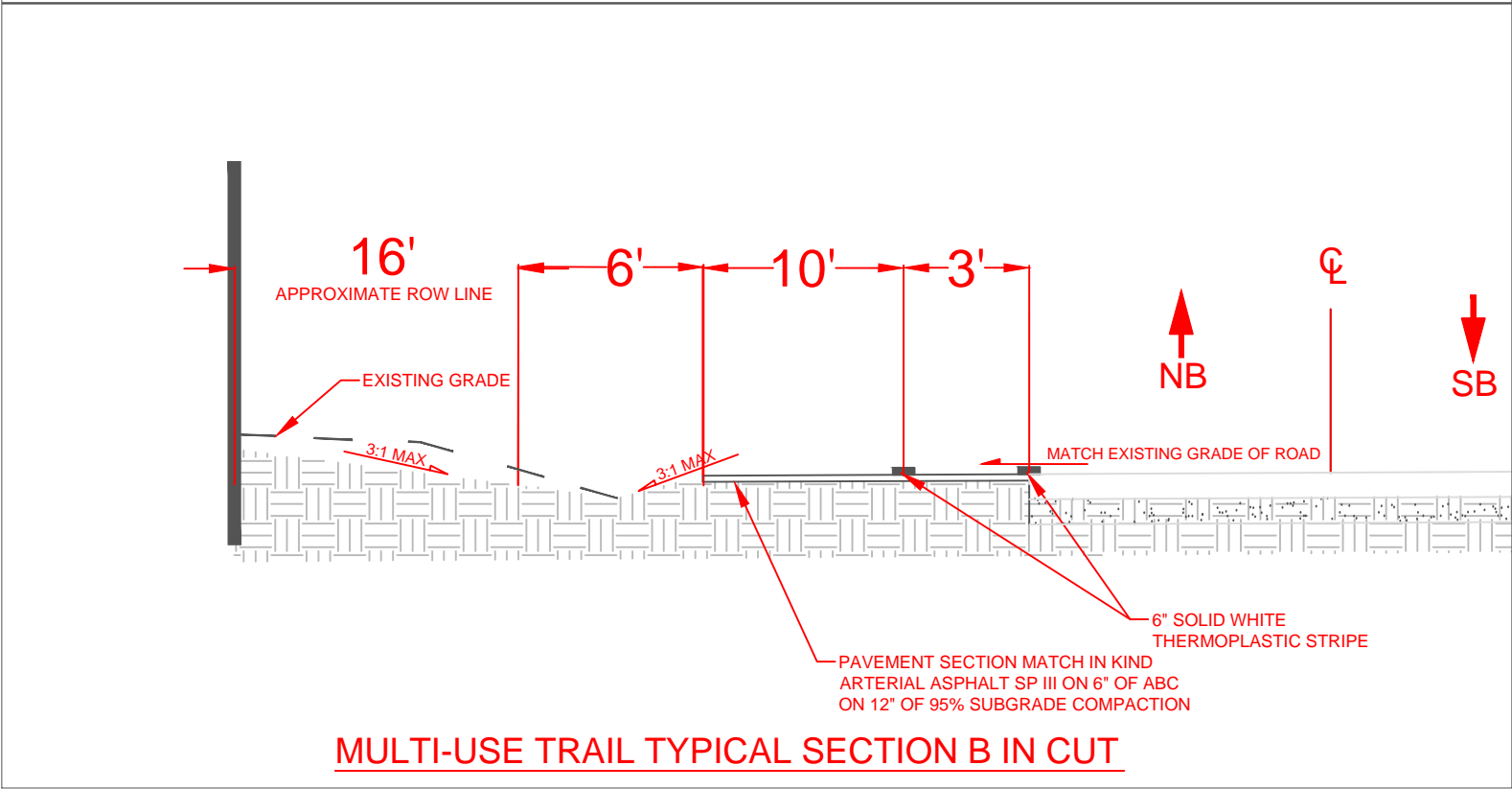
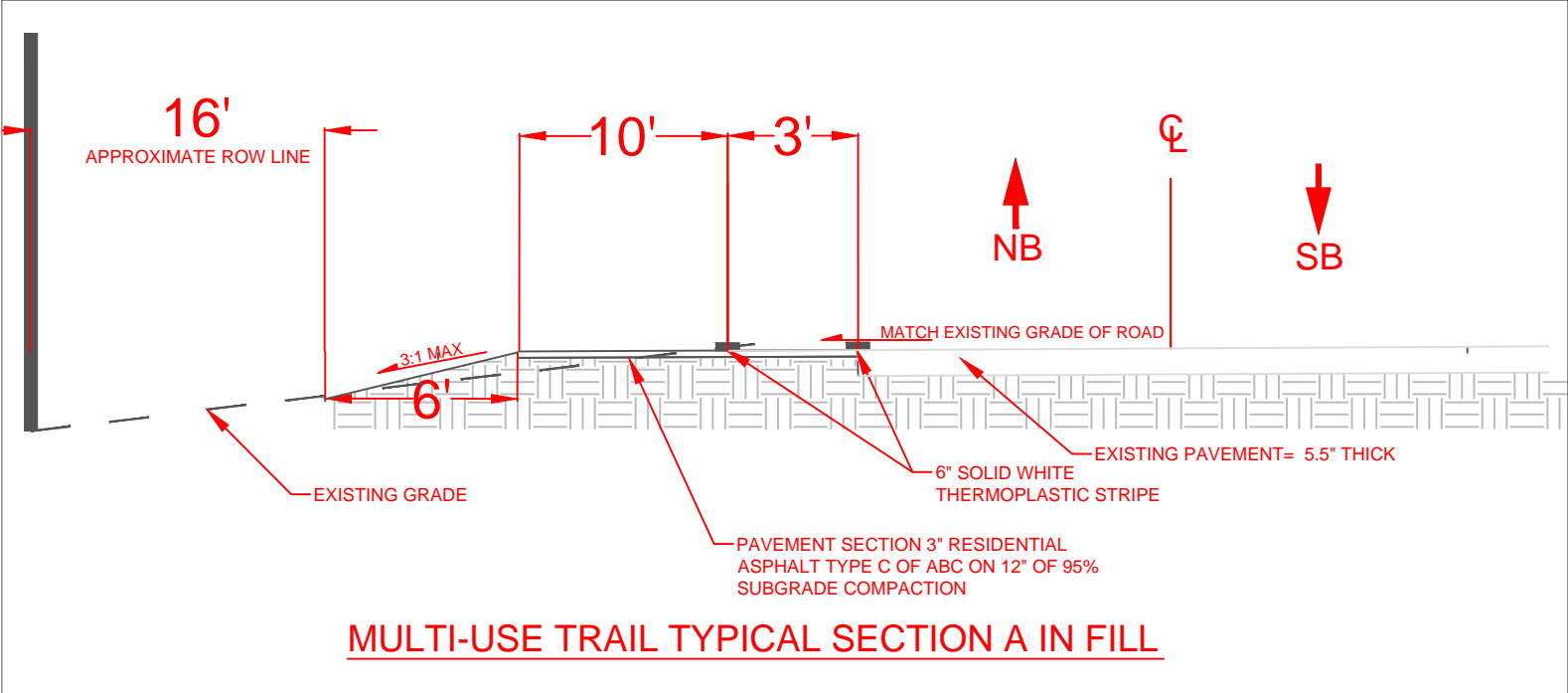




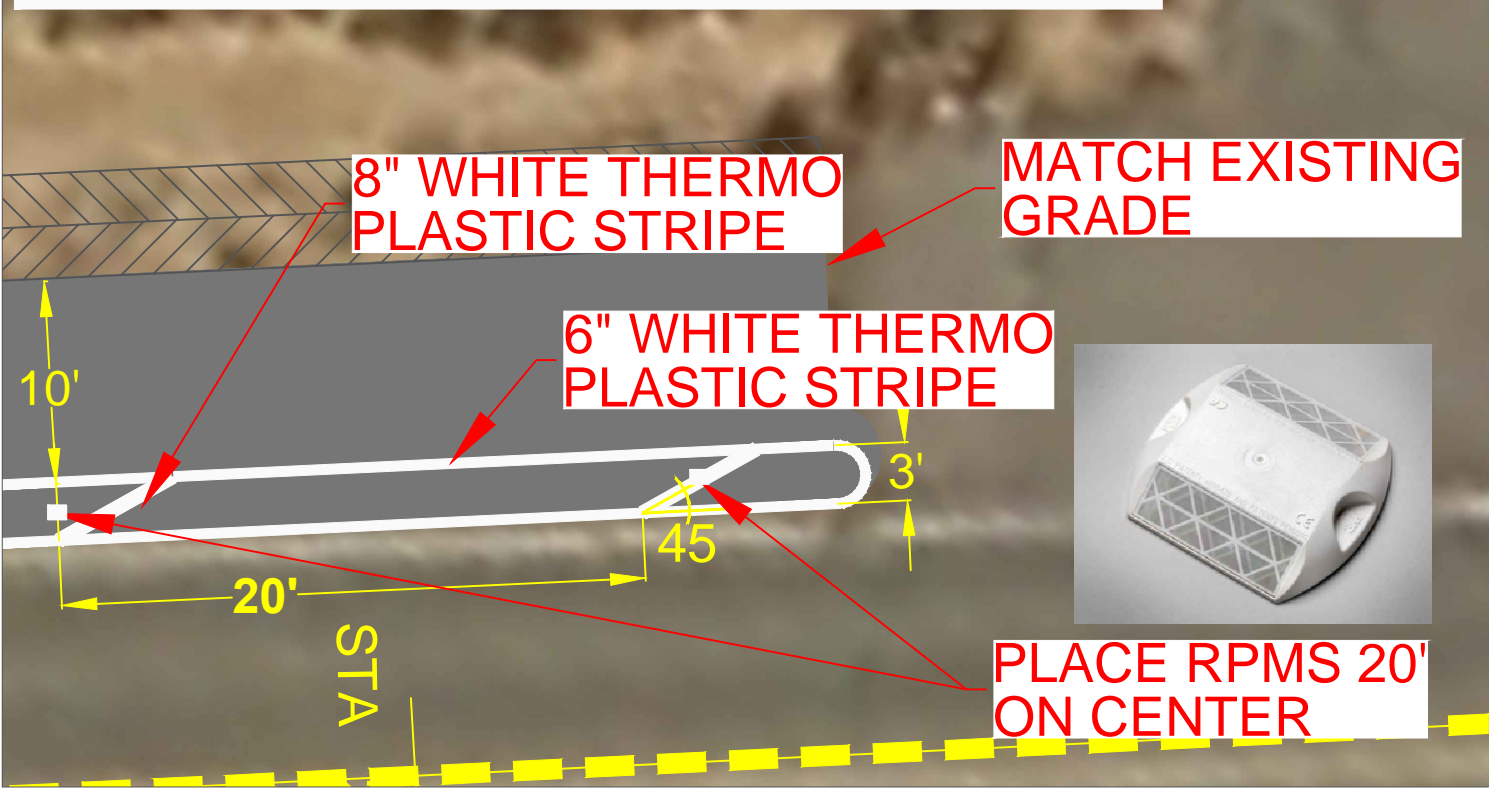


RAINBOW BLVD MULTI USE PATH





BUFFER STRIPING AND END TREATMENT



MATERIAL QUANTITIES

	MATERIAL	AMOUNT
1	MACHINE EXTRUDED ASPHALT CONCRETE CURB	2200 LF
2	TYPE C 3" THICK ASPHALT	3000 SY
3	6" WHITE THERMOPLASTIC STRIPE	4600 LF
4	8" WHITE THERMOPLASTIC STRIPE	500 LF

PROJECT LENGTH:2167'