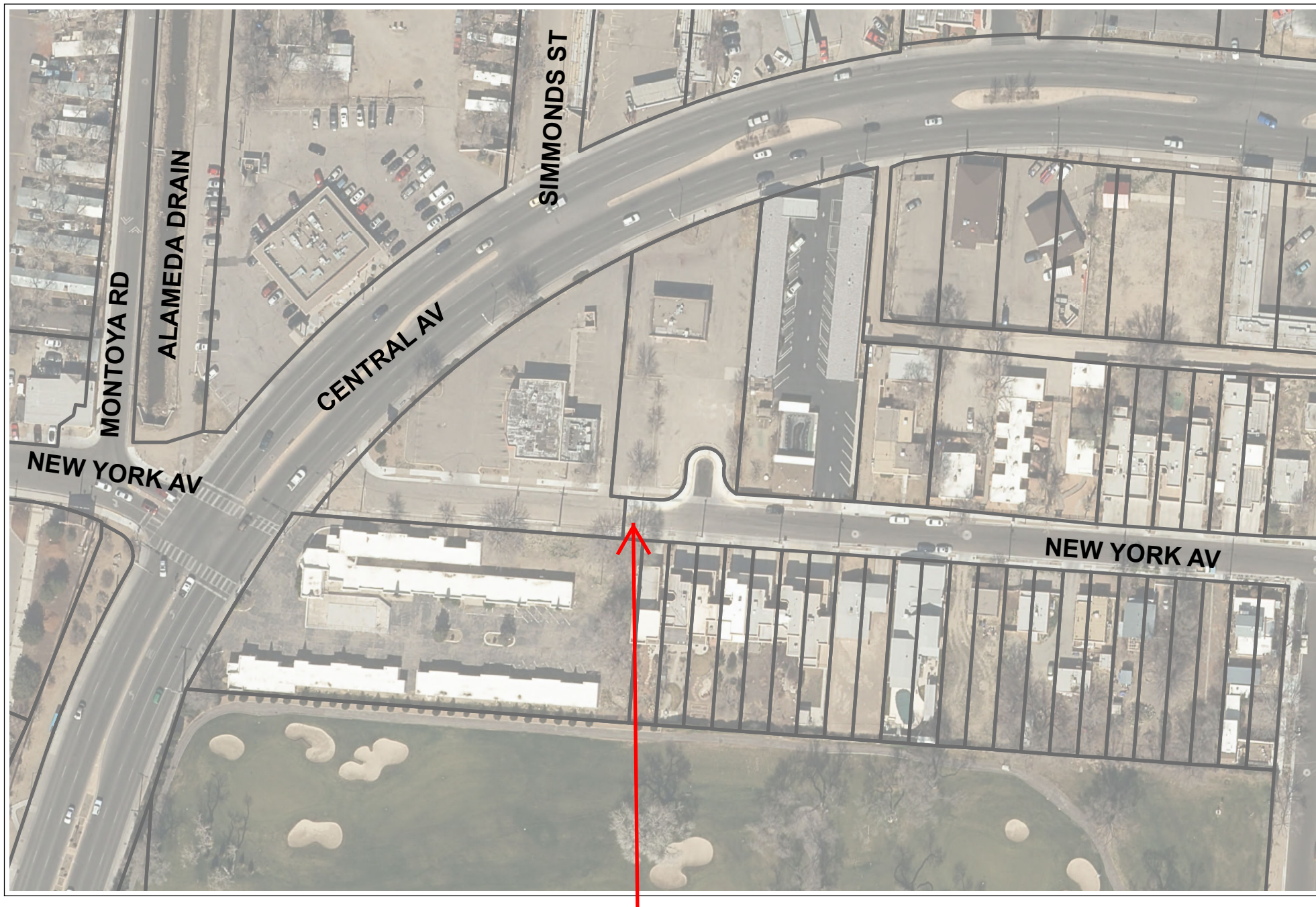


0 100 200 400 Feet



Bollard Replacement Site Location Map



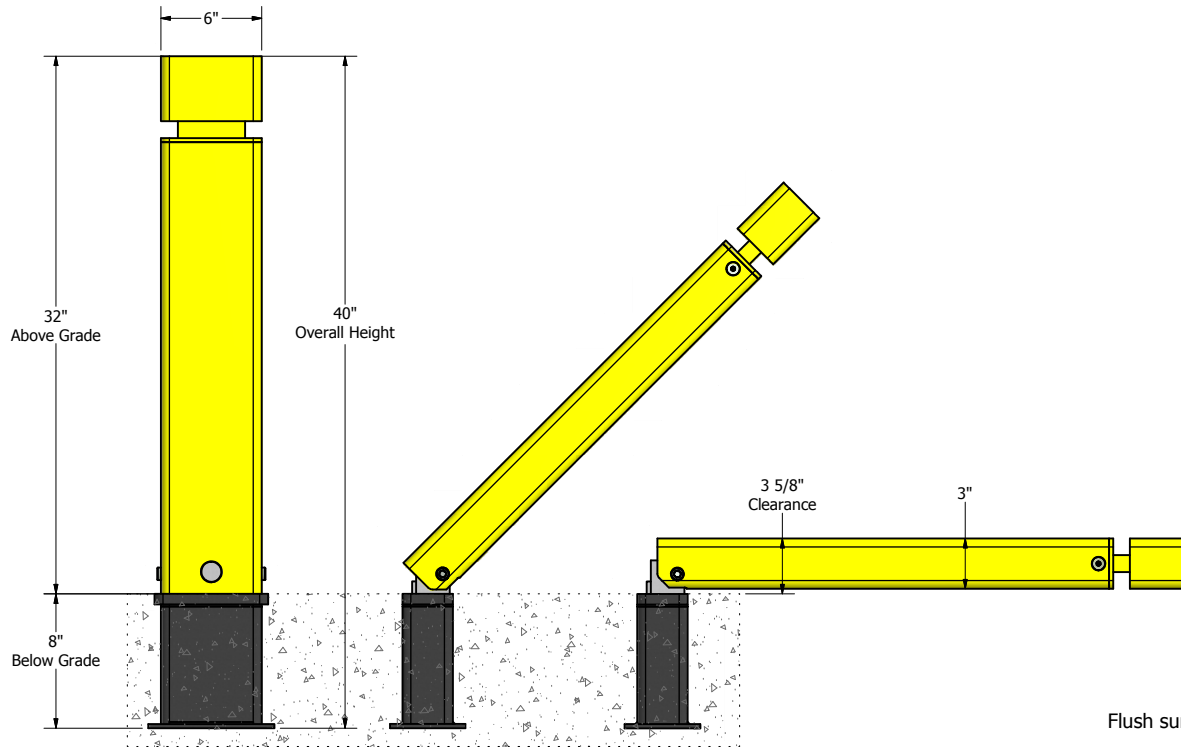
Remove existing bollard  
and replace with MaxiForce  
model MCSP-SS1-S



# MaxiForce™ Collapsible Bollard

Standard Body, Padlock Operated, Standard Style 1 Head, Simple Base

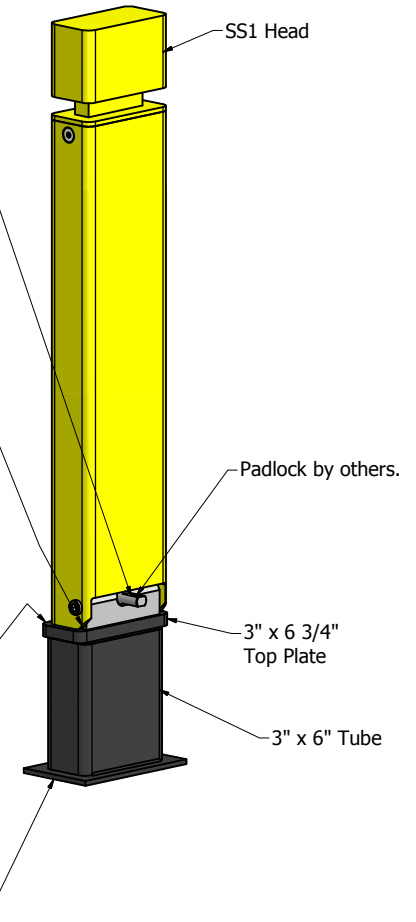
AHJ approved in many cities / counties / campuses for use in fire lanes per International Fire Code (IFC) 503



Two sided locking pin available upon request (allows two separate parties entrance).

Patented break-away design allows instant emergency access without a key. This unit can be pushed over with the bumper of a vehicle.

Flush surface when bollard is removed. Leaves no tripping hazard and won't catch snow plows or other maintenance equipment.

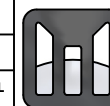


- Low Maintenance / Durable steel construction
- One year warranty / Protected by \$1,000,000 in liability insurance
- No complex assembly required in the field
- Custom sizes, options, colors and finishes available upon request
- Finish options available (add code to the end of the model number)
  - Powder coated (PC)
  - Powder coated with DRYZINC primer (PCZ)
  - Hot dip galvanized (G)
  - Hot dip galvanized & powder coated (GPC)
- Reflective tape available upon request

Bollard Assy. Weight	45 lbs
Base Weight	14 lbs
Drawing Rev.	1
Created	11/2/2009

PROPRIETARY AND CONFIDENTIAL

THIS DRAWING CONTAINS PROPRIETARY INFORMATION OF BLUE EMBER TECHNOLOGIES, LLC. ANY USE OF THIS DRAWING OR THE INFORMATION CONTAINED HEREIN FOR OTHER THAN THE PURPOSE FOR WHICH THIS DRAWING IS FURNISHED IS FORBIDDEN.



## MaxiForce™ Traffic Control Bollards

7560 Main Street  
Sykesville, MD 21784  
410-552-9888 (phone) - 410-552-9939 (fax)  
www.maxiforcebollards.com - sales@maxiforcebollards.com

Model	MCSP-SS1-S		
Size	File Name	MCSP-SS1-S	
C	Scale	NA	DO NOT SCALE DRAWING
		Sheet	1 Of 1