


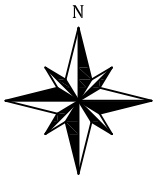
QUANTITIES			
ITEM NO.	DESCRIPTION	UNIT	ESTIMATED QUANTITY
4.0100	CONSTRUCTION STAKING, COMPL.	LS	1
6.0500	CONSTRUCTION MOBILIZATION,COMPL.	%	5%
19.0100	CONSTRUCTION TRAFFIC CONTROL & BARRICADING,COMPL.	LS	1
30.0200	NPDES PERMITTING, COMPL.	LS	1
116.0120	ARTERIAL ASPHALT CONCRETE TYPE B, COMPLETE	TON	5
201.0100	SITE CLEARING AND GRUBBING, COMPL.	AC	0.1000
201.0200	TREES,12" TO 30" CIRCUMFERENCE, REMOVE & DISPOSE, COMPL.	EA	10
301.0200	SUBGRADE PREP. 12" AT 95% COMPACTION, CIP.	SY	15
302.0100	AGGREGATE BASE COURSE, CRUSHED, 6" AT 95% COMPACTION, CIP. SD 2408	SY	15
336.0100	PRIME COAT, EMULSIFIED ASPHALT, CIP.	SY	15
336.0800	ARTERIAL ASPHALT CONCRETE, TYPE C, 0" TO 1-1/2 INCH THICK, WITHOUT MACHINE LAYDOWN, CIP.	SY	15
336.1200	TACT COAT, CATIONIC EMULSIFIED ASPHALT, CIP.	SY	15
337.0200	CONCRETE PAVEMENT, 6" THICK, PORTLAND CEMENT CONCRETE WITH FLY ASH, CIP. SD 2411	SY	17
340.0100	SIDEWALK, 4" THICK, PORTLAND CEMENT CONCRETE, INCL. SUBGRADE COMPACTION, CIP. SD 2430	SY	50
340.0231	DETECTABLE WARNING SURFACE ON NEW OR EXISTING WHEEL CHAIR RAMPS	SF	32
340.0231	WHEELCHAIR ACCESS RAMP, 4" PCC, STD. CURB., CIP. SD 2418	SY	25
340.0500	CURB & GUTTER, STANDARD, PORTLAND CEMENT CONCRETE, INCL. SUBGRADE PREPARATION,CIP. SD 2415	LF	70
340.0600	CURB & GUTTER, MEDIAN, PORTLAND CEMENT CONCRETE, CIP. SD 2408	LF	50
340.1100	HEADER CURB, PORTLAND CEMENT CONCRETE, INCL. SUBGRADE, CIP., SD 2415	LF	100
343.0300	EXISTING PAVEMENT, ASPHALT CONCRETE, MORE THAN 4" THICK, SAWCUT, REMOVE & DISPOSE, COMPL.	SY	13
343.0800	EXISTING CURB & GUTTER OR VALLEY GUTTER, PC CONCRETE ,REMOVE & DISPOSE, COMPL.	LF	120
343.0900	EXISTING SIDEWALK & DRIVEPAD, SAWCUT, REMOVE & DISPOSE, COMPL.	SY	50
441.0010	REFLECTORIZED PLASTIC PAVEMENT MARKINGS, 4" WIDTH, CIP.	LF	46
450.0010	ALUMINUM PANEL SIGN, CIP,	SF	44
450.0100	SQUARE TUBE STEEL POSTS & BASE POSTS FOR ALUMINUM PANEL SIGN, CIP.	LF	78




CITY OF ALBUQUERQUE DEPARTMENT OF MUNICIPAL DEVELOPMENT ENGINEERING DIVISION			
TITLE: MONTANO RD & WINTER HAVEN RD PEDESTRIAN IMPROVEMENTS QUANTITIES			
NOT FOR CONSTRUCTION	DESIGNED BY: SAVANNAH TORRES	LAST DESIGN UPDATE <div>Mo./Day/Yr. 1/17/2019 </div>	
	REVIEWED BY:		
City Project No. 706192	Zone Map No. E-12	Sheet 1	Of 5




- KEYED NOTES:**
1. REMOVE EXISTING SIDEWALK TO NEAREST JOINT.
 2. REMOVE EXISTING CURB AND GUTTER TO NEAREST JOINT.
 3. REMOVE EXISTING MEDIAN CURB AND GUTTER TO NEAREST JOINT.
 4. REMOVE EXISTING BUSH.
 5. REMOVE EXISTING SIGN.



CITY OF ALBUQUERQUE DEPARTMENT OF MUNICIPAL DEVELOPMENT ENGINEERING DIVISION			
TITLE: MONTANO RD & WINTER HAVEN RD PEDESTRIAN IMPROVEMENTS REMOVALS			
NOT FOR CONSTRUCTION	DESIGNED BY: SAVANNAH TORRES		Mo./Day/Yr. 1/17/2019
	REVIEWED BY:		
City Project No. 706192	Zone Map No. E-12	Sheet 2	Of 5

LAST DESIGN UPDATE	Mo./Day/Yr. 1/17/2019




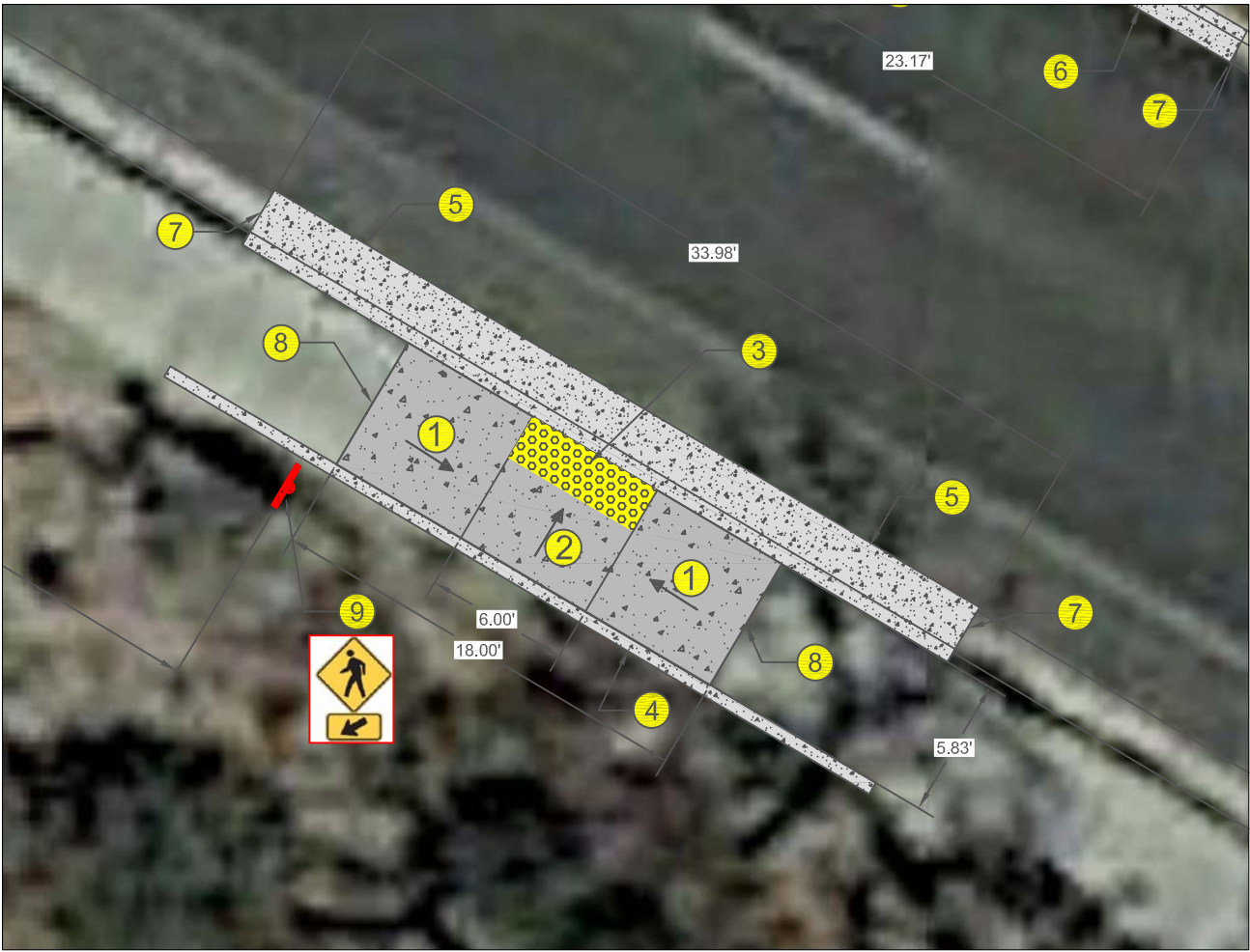
CITY OF ALBUQUERQUE DEPARTMENT OF MUNICIPAL DEVELOPMENT ENGINEERING DIVISION					
TITLE: MONTANO RD AND WINTER HAVEN RD PEDESTRIAN IMPROVEMENTS					
NOT FOR CONSTRUCTION		DESIGNED BY: SAVANNAH TORRES		LAST DESIGN UPDATE	
		REVIEWED BY:			
City Project No. 706192		Zone Map No. E-12		Sheet 3	Of 5



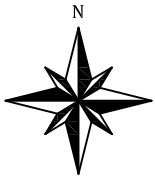
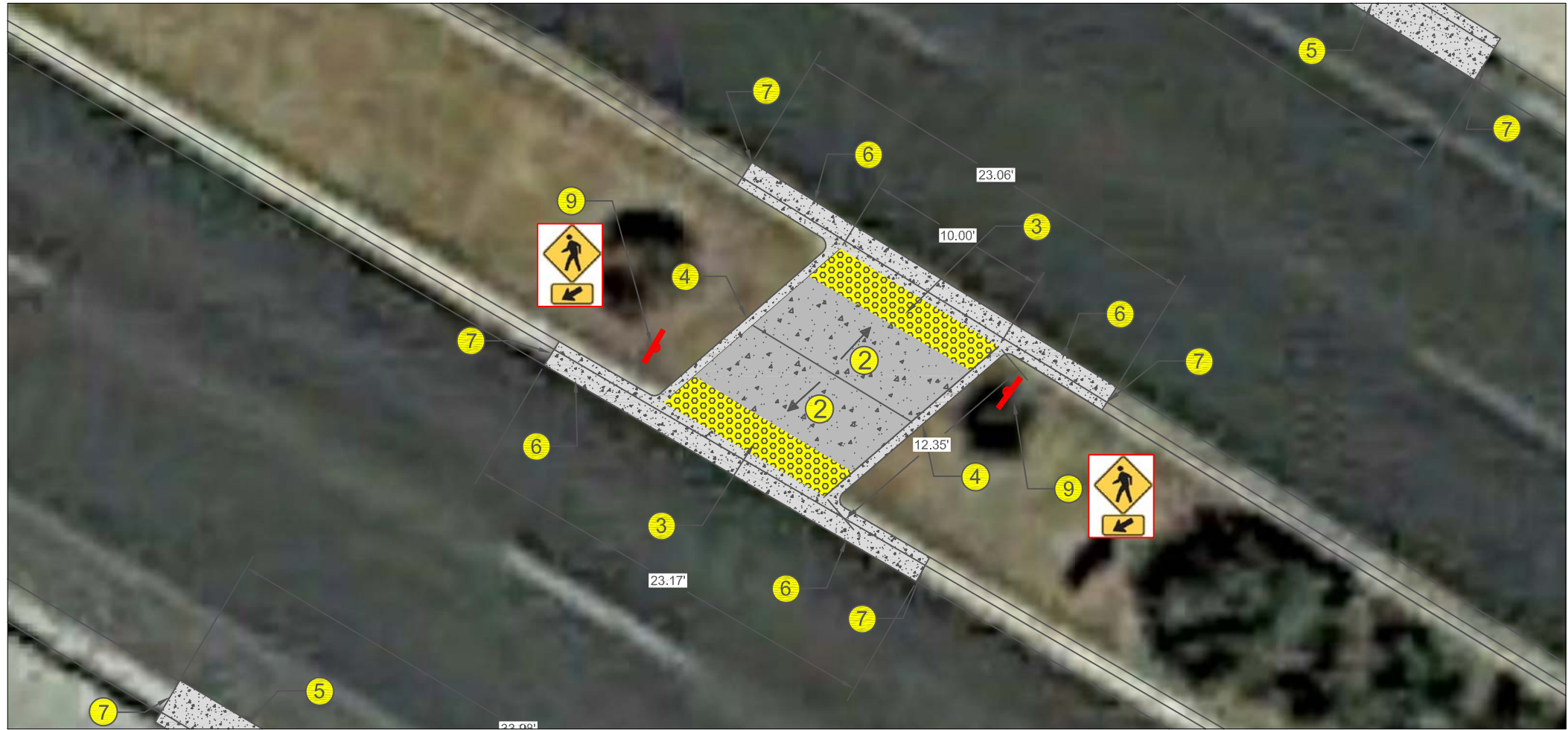
- GENERAL NOTES:**
1. DETECTABLE WARNING SURFACE TO BE CAST IN PLACE AND REPLACEABLE.
 2. CROSS SLOPES OF CURB RAMPS, LANDINGS, SIDEWALKS SHALL BE 2.0% MAX (RECOMMENDED 1.5%).
 3. RUNNING SLOPES OF CURB RAMPS SHALL BE 7.5% MAX.
- KEYED NOTES:**
1. RAMP SLOPE, SEE GENERAL NOTES.
 2. LEVEL LANDING, SEE GENERAL NOTES.
 3. INSTALL DETECTABLE WARNING SURFACE.
 4. BUILD HEADER CURB.
 5. BUILD STANDARD CURB AND GUTTER. SEE COA STD. DWG. 2415A.
 6. BUILD MEDIAN CURB AND GUTTER. SEE COA STD. DWG. 2415B.
 7. MATCH EXISTING CURB AT NEAREST JOINT.
 8. MATCH EXISTING SIDEWALK AT NEAREST JOINT.
 9. INSTALL SIGN.




CITY OF ALBUQUERQUE DEPARTMENT OF MUNICIPAL DEVELOPMENT ENGINEERING DIVISION			
TITLE: MONTANO RD & WINTER HAVEN RD PEDESTRIAN IMPROVEMENTS			
NOT FOR CONSTRUCTION	DESIGNED BY: SAVANNAH TORRES		LAST DESIGN UPDATE
	REVIEWED BY:		
City Project No. 706192	Zone Map No. E-12	Sheet 4	Of 5



- GENERAL NOTES:**
1. DETECTABLE WARNING SURFACE TO BE CAST IN PLACE AND REPLACEABLE.
 2. CROSS SLOPES OF CURB RAMPS, LANDINGS, SIDEWALKS SHALL BE 2.0% MAX (RECOMMENDED 1.5%).
 3. RUNNING SLOPES OF CURB RAMPS SHALL BE 7.5% MAX.
- KEYED NOTES:**
1. RAMP SLOPE, SEE GENERAL NOTES.
 2. LEVEL LANDING, SEE GENERAL NOTES.
 3. INSTALL DETECTABLE WARNING SURFACE.
 4. BUILD HEADER CURB.
 5. BUILD STANDARD CURB AND GUTTER. SEE COA STD. DWG. 2415A.
 6. BUILD MEDIAN CURB AND GUTTER. SEE COA STD. DWG. 2415B.
 7. MATCH EXISTING CURB AT NEAREST JOINT.
 8. MATCH EXISTING SIDEWALK AT NEAREST JOINT.
 9. INSTALL SIGN.



CITY OF ALBUQUERQUE DEPARTMENT OF MUNICIPAL DEVELOPMENT ENGINEERING DIVISION			
TITLE: MONTANO RD & WINTER HAVEN RD PEDESTRIAN IMPROVEMENTS			
NOT FOR CONSTRUCTION	DESIGNED BY: SAVANNAH TORRES		LAST DESIGN UPDATE
	REVIEWED BY:		
City Project No. 706192	Zone Map No. E-12	Sheet 5	Of 5