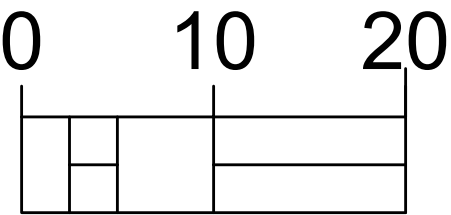
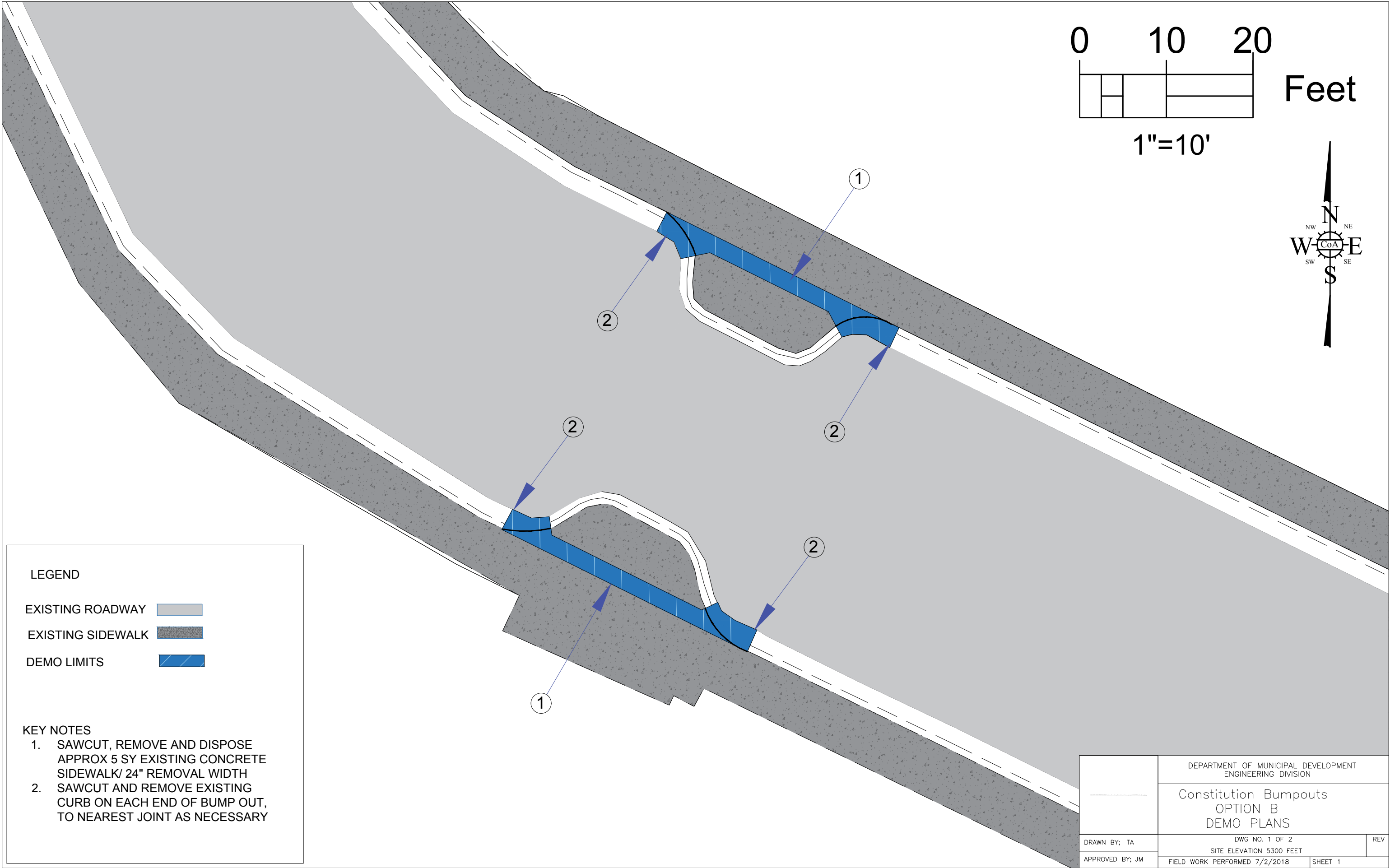
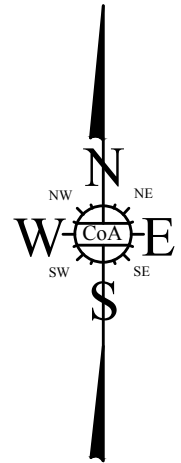


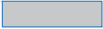


Map data ©2019 Google 100 ft



1"=10'



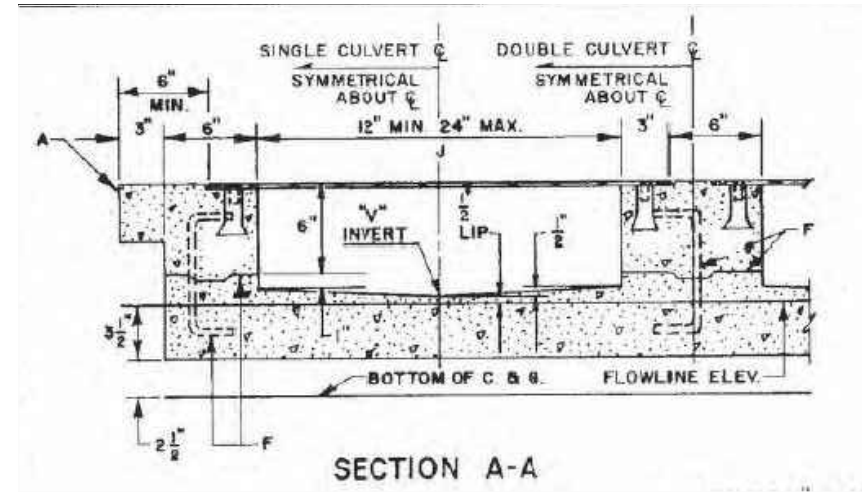
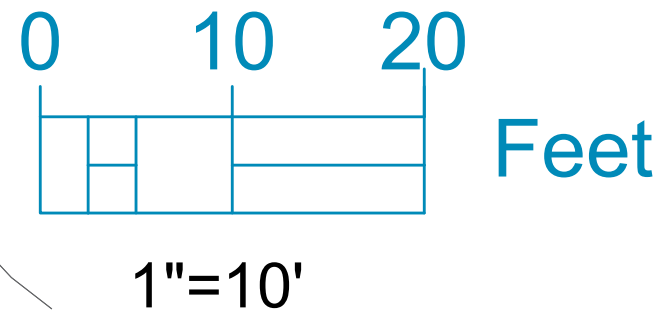
LEGEND

- EXISTING ROADWAY 
- EXISTING SIDEWALK 
- DEMO LIMITS 

KEY NOTES

1. SAWCUT, REMOVE AND DISPOSE APPROX 5 SY EXISTING CONCRETE SIDEWALK/ 24" REMOVAL WIDTH
2. SAWCUT AND REMOVE EXISTING CURB ON EACH END OF BUMP OUT, TO NEAREST JOINT AS NECESSARY

	DEPARTMENT OF MUNICIPAL DEVELOPMENT ENGINEERING DIVISION		
	Constitution Bumpouts OPTION B DEMO PLANS		
DRAWN BY: TA	DWG NO. 1 OF 2		REV
APPROVED BY: JM	SITE ELEVATION 5300 FEET		
	FIELD WORK PERFORMED 7/2/2018	SHEET 1	



LEGEND

CULVERT CURB



STEEL PLATE



KEY NOTES

1. MATCH EXISTING FL ELEVATION. INSTALL NEW C & G AS NECESSARY TO ACCOMMODATE ENTRANCE AND EXITING OF GUTTER FLOWS
2. INSTALL 22 LF OF REINFORCED 12" SIDEWALK CULVERT CITY DRAWING 2236. ADD 5 LF OF STEEL PLATE CENTERED ON EXISTING STAIRS AND OPPOSITE ENTRANCE ON SOUTH SIDE.
3. REPLACE WITH NEW CURB AND GUTTER. MATCH NEW CULVERT FLOW LINES TO EXISTING FLOW LINES.
4. CONTRACTOR AND CSD TO COORDINATE EXECUTION OF WORK WITH DMD ENGINEERING

DEPARTMENT OF MUNICIPAL DEVELOPMENT ENGINEERING DIVISION		
Constitution Bumpout OPTION B DRAINAGE IMPROVEMENTS		
DRAWN BY: TA	DWG NO. 2 OF 2	REV
APPROVED BY: JM	SITE ELEVATION 5300 FEET	
	FIELD WORK PERFORMED 7/2/2018	SHEET 2