

CITY OF ALBUQUERQUE  
DEPARTMENT OF MUNICIPAL DEVELOPMENT  
CONSTRUCTION PLANS FOR  
**MONTAÑO RD NW PEDESTRIAN TRAIL**

GUADALUPE TO MONTAÑO  
CPN:904406



VICINITY MAP:



B.O.P

ZONE ATLAS MAP NO. F-14-Z

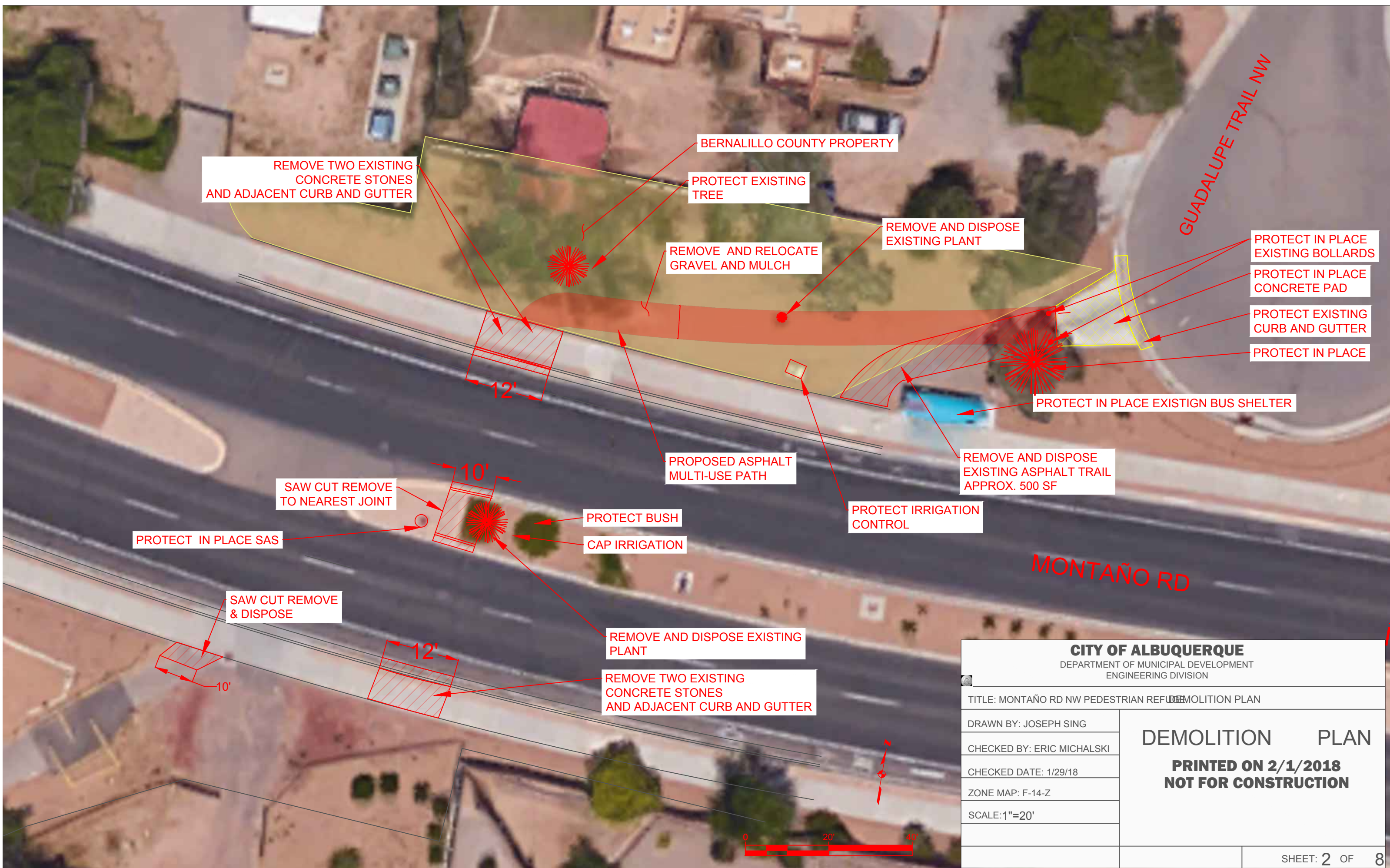
E.O.P

**INDEX OF SHEETS**

- 1. COVER SHEET
- 2. DEMOLITION PLAN
- 3. CONSTRUCTION PLAN -1
- 4. CONSTRUCTION PLAN -2
- 5. CONSTRUCTION PLAN -3
- 6. SIGNING PLAN
- 7. STRIPING PLAN

CITY OF ALBUQUERQUE		
DEPARTMENT OF MUNICIPAL DEVELOPMENT ENGINEERING DIVISION		
TITLE: MONTAÑO RD NW PEDESTRIAN REFUGE		
DRAWN BY: JOSEPH SING	<b>PRINTED ON 2/1/2018 NOT FOR CONSTRUCTION</b>	
CHECKED BY: ERIC MICHALSKI		
CHECKED DATE: 1/29/18		
ZONE MAP: F-14-Z		
SCALE:		
		SHEET:1 OF 8





REMOVE TWO EXISTING  
CONCRETE STONES  
AND ADJACENT CURB AND GUTTER

BERNALILLO COUNTY PROPERTY

PROTECT EXISTING  
TREE

REMOVE AND RELOCATE  
GRAVEL AND MULCH

REMOVE AND DISPOSE  
EXISTING PLANT

GUADALUPE TRAIL NW

PROTECT IN PLACE  
EXISTING BOLLARDS

PROTECT IN PLACE  
CONCRETE PAD

PROTECT EXISTING  
CURB AND GUTTER

PROTECT IN PLACE

PROTECT IN PLACE EXISTIGN BUS SHELTER

REMOVE AND DISPOSE  
EXISTING ASPHALT TRAIL  
APPROX. 500 SF

PROPOSED ASPHALT  
MULTI-USE PATH

PROTECT IRRIGATION  
CONTROL

PROTECT BUSH

CAP IRRIGATION

SAW CUT REMOVE  
TO NEAREST JOINT

PROTECT IN PLACE SAS

SAW CUT REMOVE  
& DISPOSE

REMOVE AND DISPOSE EXISTING  
PLANT

REMOVE TWO EXISTING  
CONCRETE STONES  
AND ADJACENT CURB AND GUTTER

MONTAÑO RD

**CITY OF ALBUQUERQUE**

DEPARTMENT OF MUNICIPAL DEVELOPMENT  
ENGINEERING DIVISION

TITLE: MONTAÑO RD NW PEDESTRIAN REFUGES DEMOLITION PLAN

DRAWN BY: JOSEPH SING

CHECKED BY: ERIC MICHALSKI

CHECKED DATE: 1/29/18

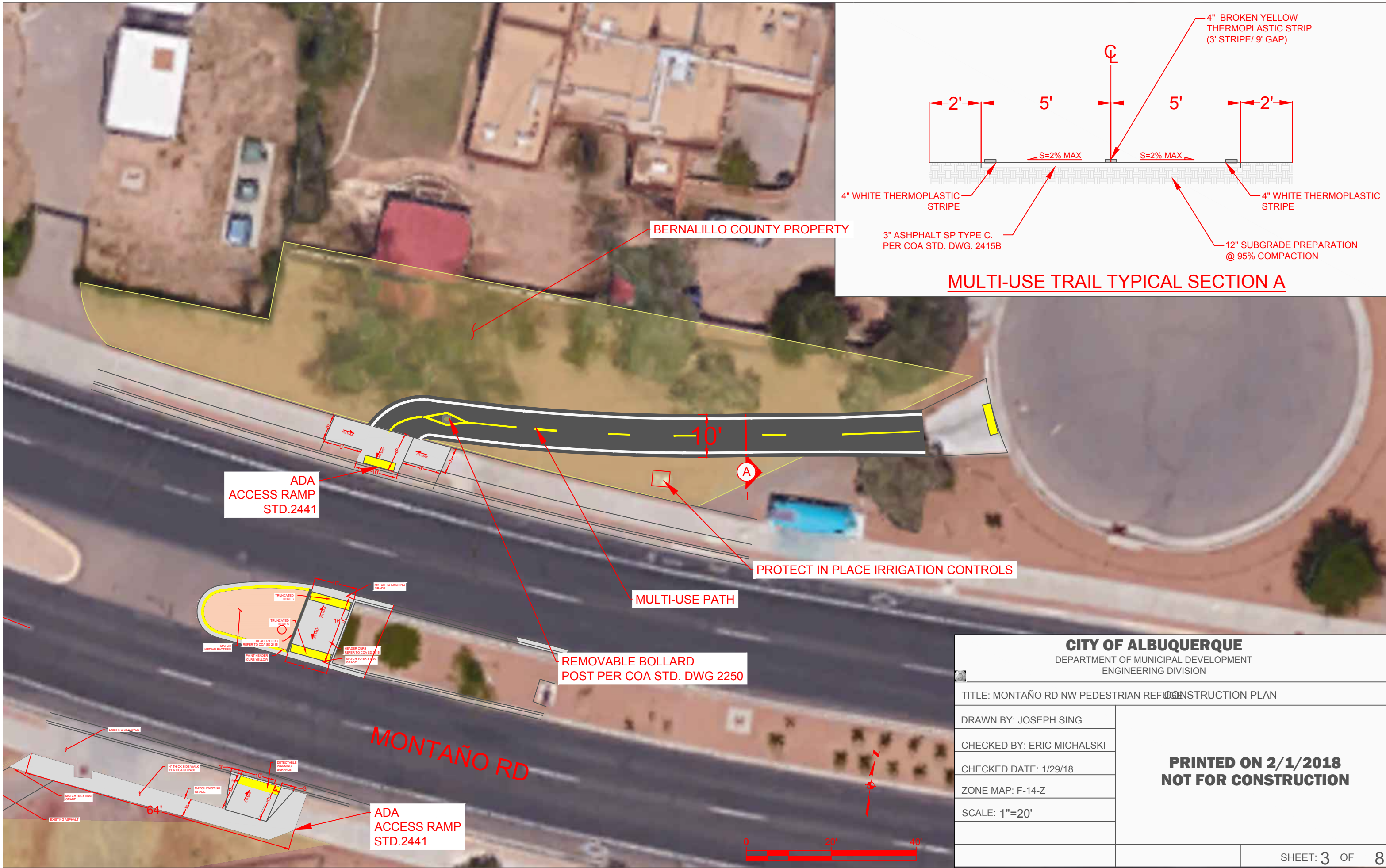
ZONE MAP: F-14-Z

SCALE: 1"=20'

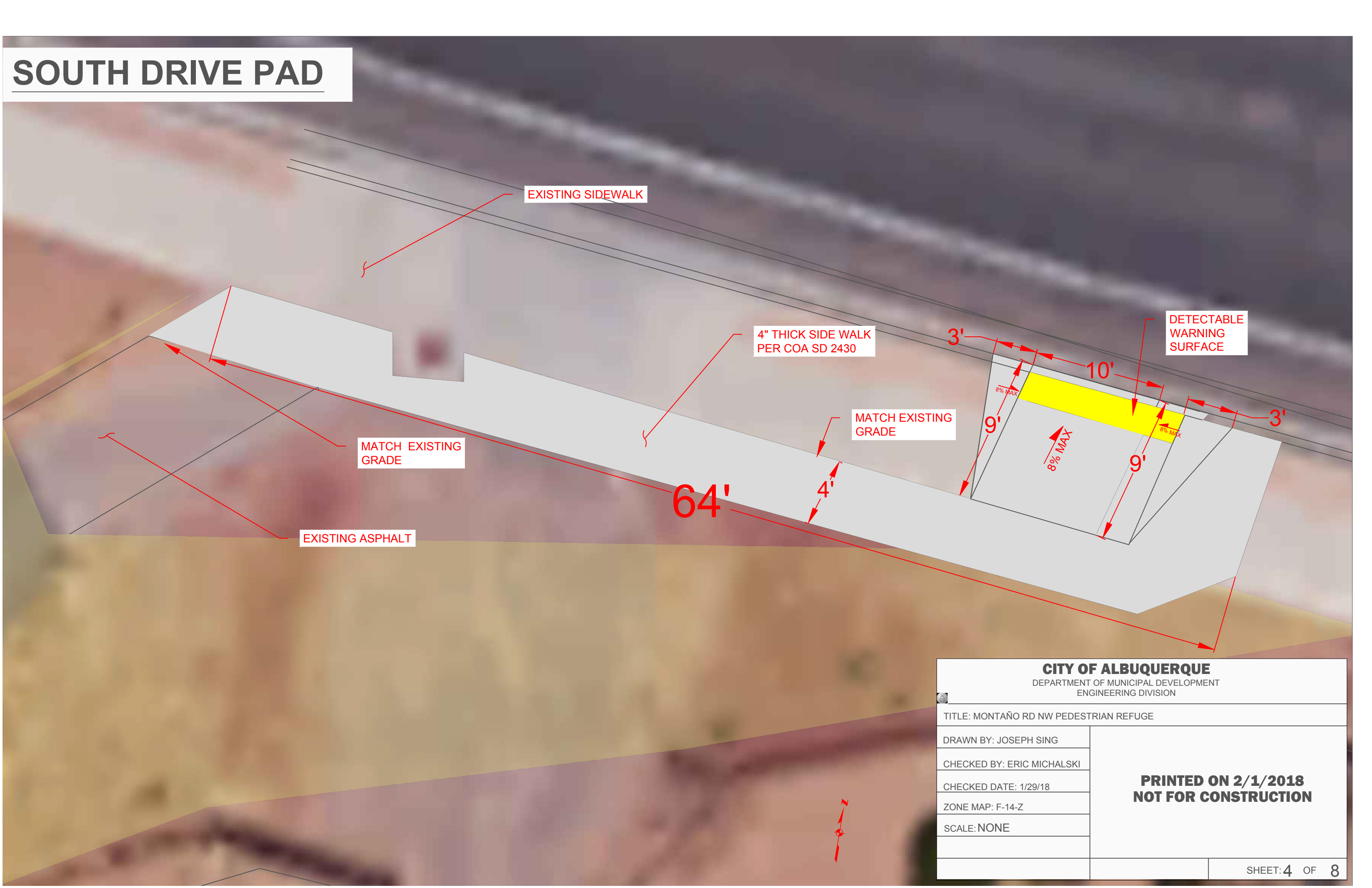
**DEMOLITION PLAN**

**PRINTED ON 2/1/2018  
NOT FOR CONSTRUCTION**





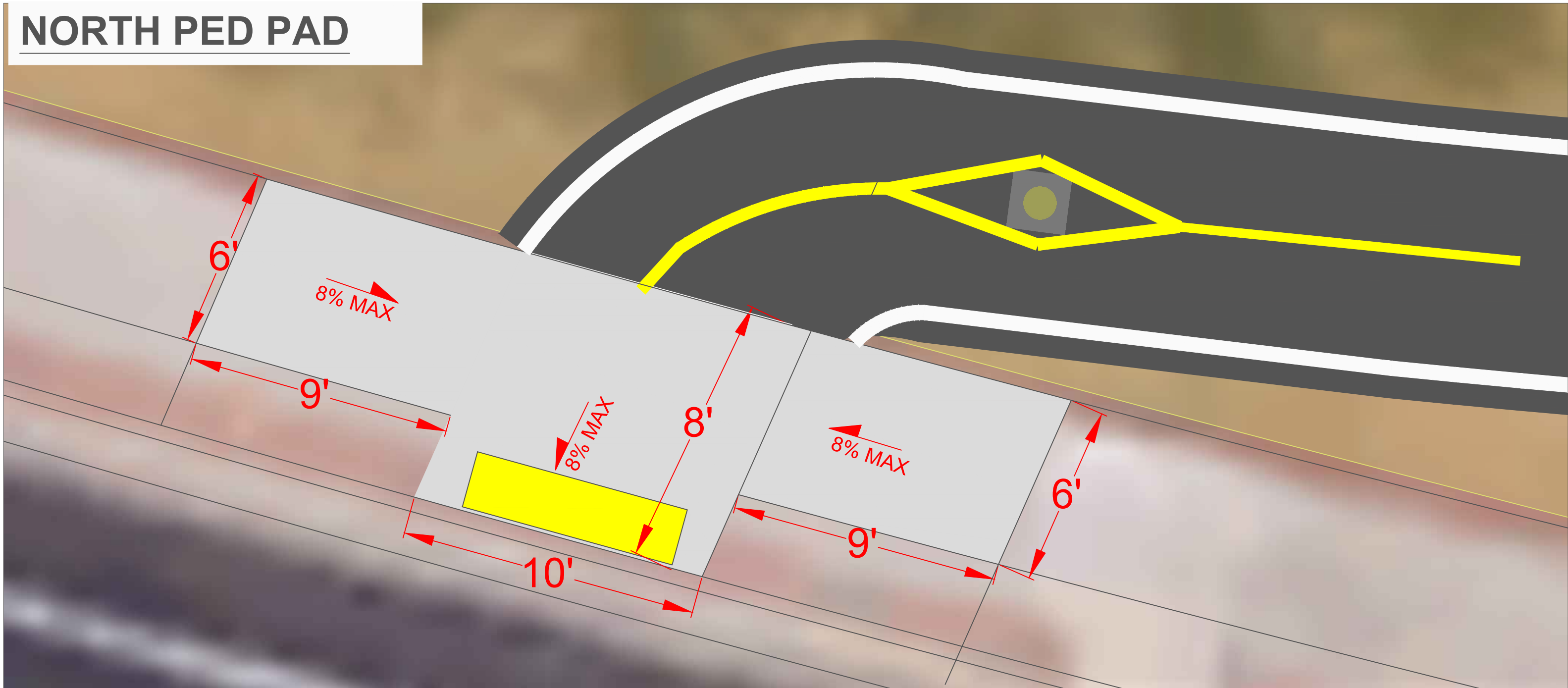
# SOUTH DRIVE PAD




CITY OF ALBUQUERQUE		
DEPARTMENT OF MUNICIPAL DEVELOPMENT ENGINEERING DIVISION		
TITLE: MONTAÑO RD NW PEDESTRIAN REFUGE		
DRAWN BY: JOSEPH SING	<b>PRINTED ON 2/1/2018 NOT FOR CONSTRUCTION</b>	
CHECKED BY: ERIC MICHALSKI		
CHECKED DATE: 1/29/18		
ZONE MAP: F-14-Z		
SCALE: NONE		
		SHEET: 4 OF 8

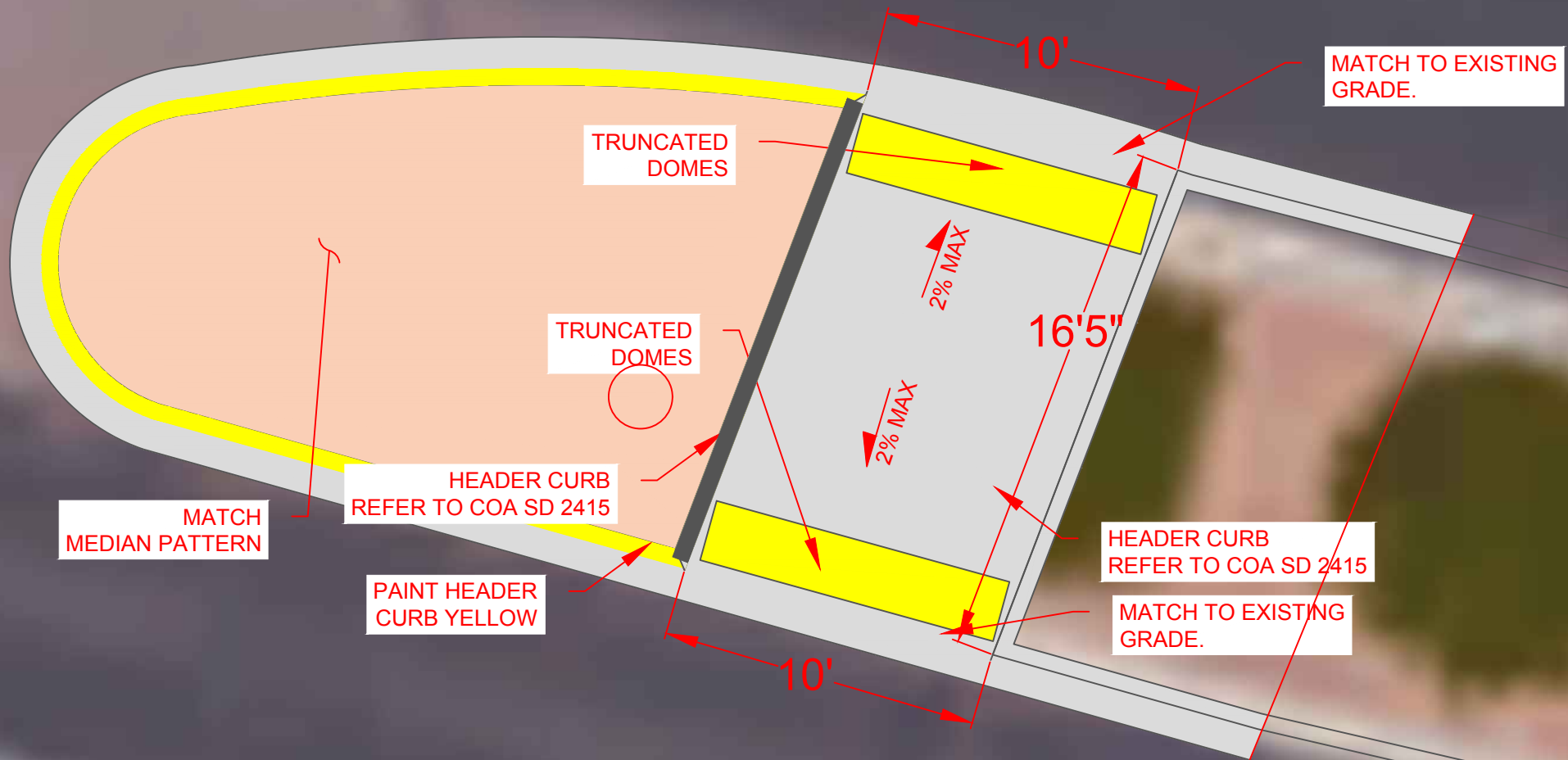


# NORTH PED PAD



<div><div></div><div><b>CITY OF ALBUQUERQUE</b> DEPARTMENT OF MUNICIPAL DEVELOPMENT ENGINEERING DIVISION</div></div>		
TITLE: MONTAÑO RD NW PEDESTRIAN REFUGE		
DRAWN BY: JOSEPH SING	<div>PRINTED ON 2/1/2018 NOT FOR CONSTRUCTION</div>	
CHECKED BY: ERIC MICHALSKI		
CHECKED DATE: 1/29/18		
ZONE MAP: F-14-Z		
SCALE: NONE		
		SHEET: 5 OF 8

# MEDIAN CROSSING



<b>CITY OF ALBUQUERQUE</b> DEPARTMENT OF MUNICIPAL DEVELOPMENT ENGINEERING DIVISION		
TITLE: MONTAÑO RD NW PEDESTRIAN REFUGE		
DRAWN BY: JOSEPH SING	<b>PRINTED ON 2/1/2018</b> <b>NOT FOR CONSTRUCTION</b>	
CHECKED BY: ERIC MICHALSKI		
CHECKED DATE: 1/29/18		
ZONE MAP: F-14-Z		
SCALE: NONE		
		SHEET: 6 OF 8





CITY OF ALBUQUERQUE DEPARTMENT OF MUNICIPAL DEVELOPMENT ENGINEERING DIVISION		
TITLE: MONTAÑO RD NW PEDESTRIAN REFUGE		
DRAWN BY: JOSEPH SING	PRINTED ON 2/1/2018 NOT FOR CONSTRUCTION	
CHECKED BY: ERIC MICHALSKI		
CHECKED DATE: 1/29/18		
ZONE MAP: F-14-Z		
SCALE: NONE		
		SHEET: 7 OF 8







EXHIBIT B

AREA NEEDED FOR TRAIL: 1430 SQUARE FEET

10'

A

MATCH TO EXISTING GRADE

NOT TO SCALE

