



SCALE 1"=30'


KEYED NOTES:

1. REMOVE EXISTING SIDEWALK TO NEAREST JOINT AND REPLACE AREA WITH NATIVE SOIL FROM OTHER PARTS OF PROJECT MAKING FINAL GRADE FLUSH WITH ABUTTING GRADE
2. REMOVE EXISTING CURB AND GUTTER TO NEAREST JOINT

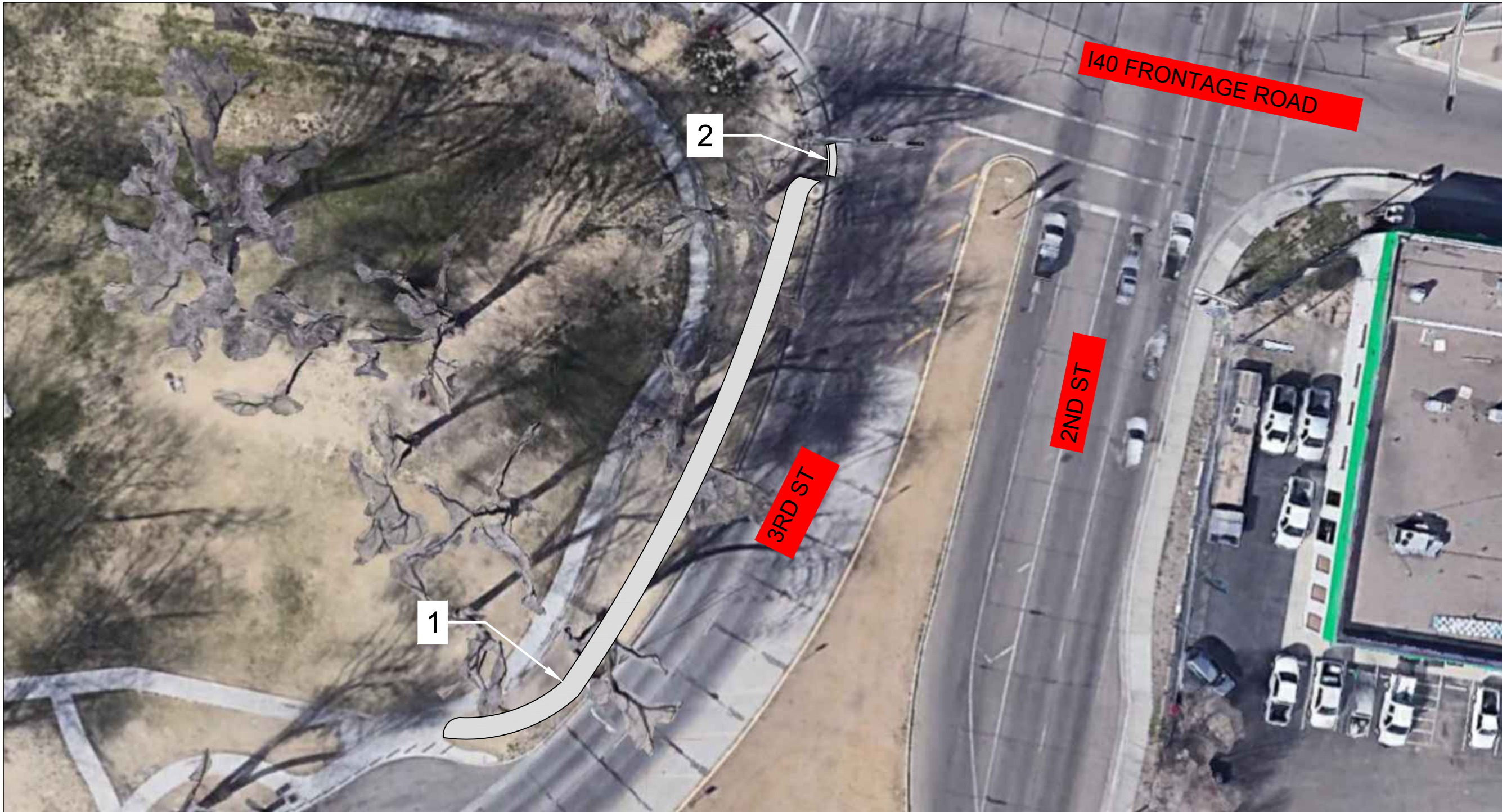
NOTES:

1. TOP OF SIDEWALK SHOULD NOT BE MORE THAN 1"-2" ABOVE ADJOINING GRADE



CITY OF ALBUQUERQUE DEPARTMENT OF MUNICIPAL DEVELOPMENT ENGINEERING DIVISION			
TITLE: <b>CORONADO PARK SIDEWALK</b>		Mo./Day/Yr. 07/01/19	
<b>NOT FOR CONSTRUCTION</b>	DESIGNED BY: D. DAVIDSON	LAST DESIGN UPDATE	
	REVIEWED BY:		
City Project No.	Zone Map No. <b>H14</b>	Sheet <b>1</b>	Of <b>3</b>





SCALE 1"=30'


KEYED NOTES:

1. INSTALL NEW 6' WIDE SIDEWALK PER COA SD 2430
2. INSTALL NEW CUBR AND GUTTER PER COA SD 2415A

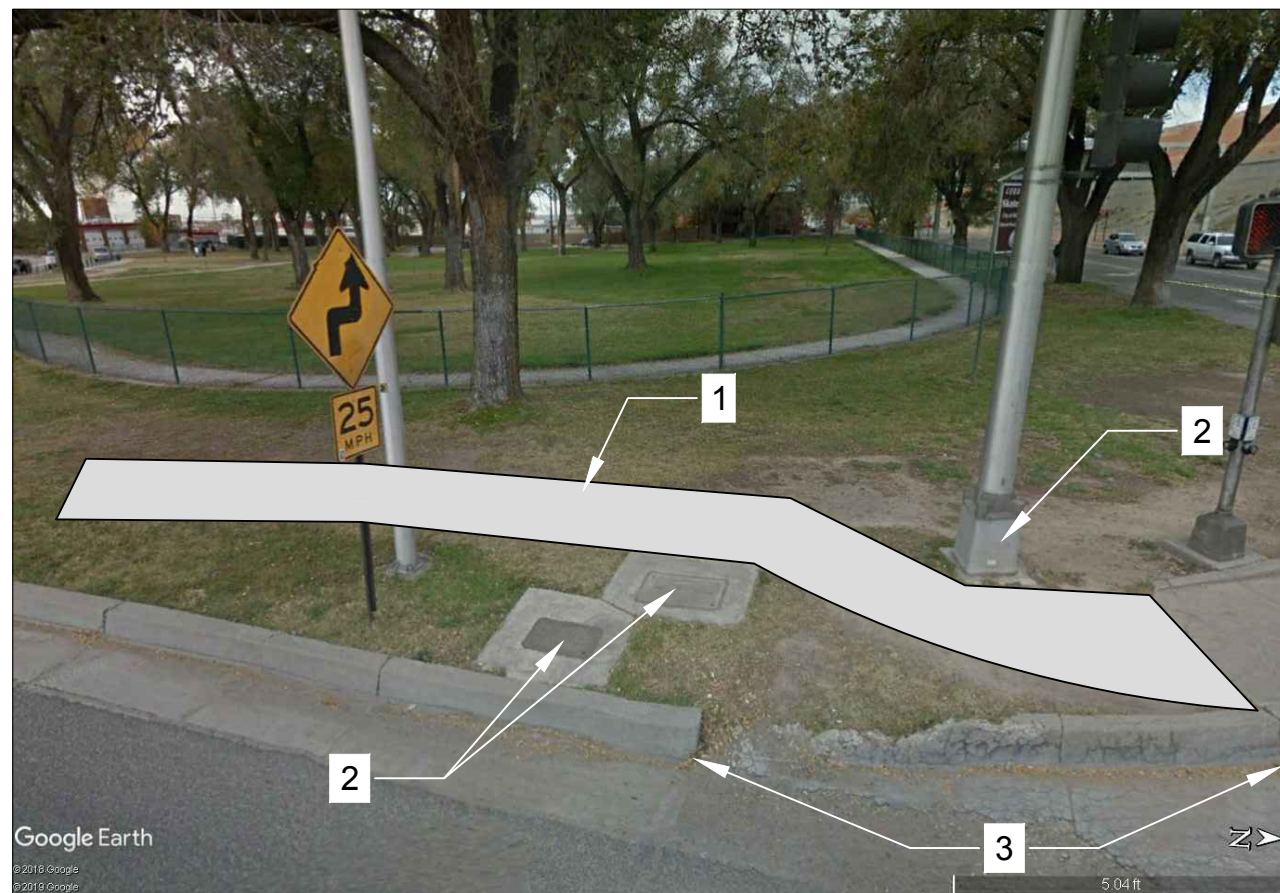
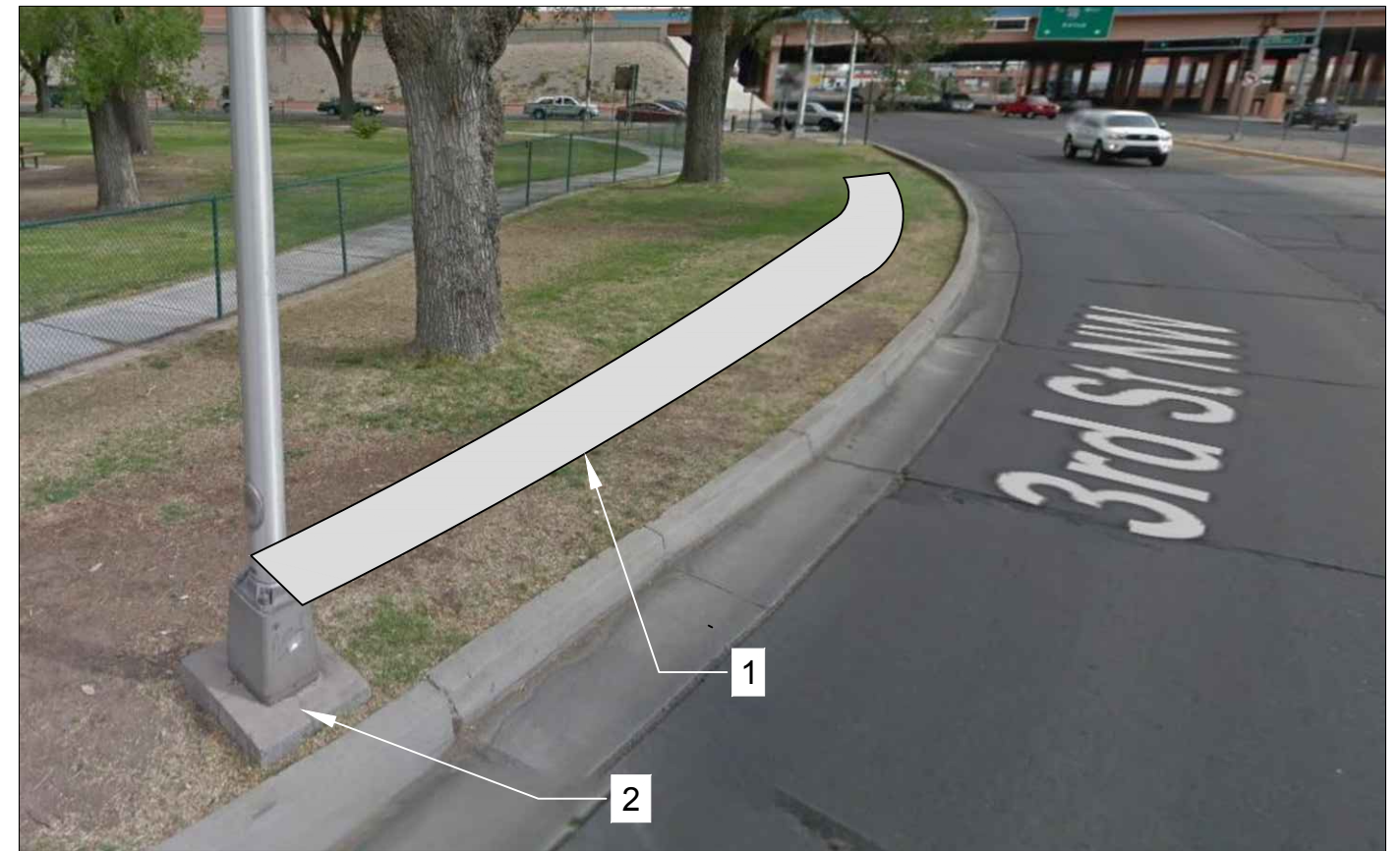
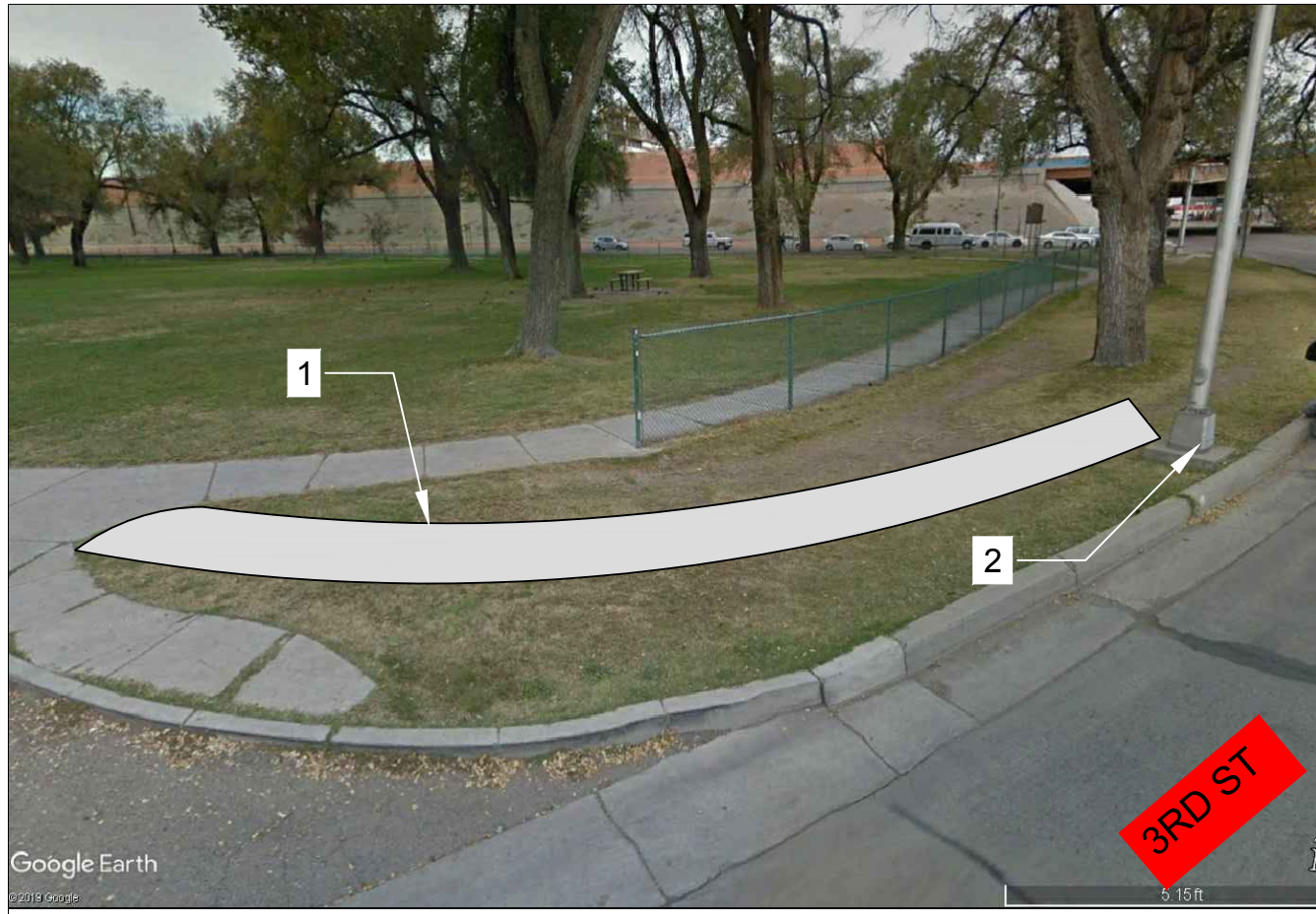
NOTES:

1. ALL WORK TO BE PERFORMED IN ACCORDANCE WITH COA STANDARD SPECIFICATIONS
2. NEW SIDEWALK TO BE ROUTED BETWEEN EXISTING CURB AND FENCE WITH ITS STREET SIDE EDGE NO MORE THAN 3' FROM BACK OF CURB



CITY OF ALBUQUERQUE DEPARTMENT OF MUNICIPAL DEVELOPMENT ENGINEERING DIVISION			
TITLE: CORONADO PARK SIDEWALK		DESIGNED BY: D. DAVIDSON	
NOT FOR CONSTRUCTION		REVIEWED BY:	
		Mo./Day/Yr. 07/01/19	
City Project No.		Zone Map No. H14	Sheet 2 Of 3






#### KEYED NOTES:

1. INSTALL SIDEWALK PER COA SD 2430
2. PROTECT IN PLACE, BUILD SIDEWALK SO THAT ITS TOP IS FLUSH WITH EXISTING UTILITY BOX COLLARS AND STREET LIGHT FOUNDATIONS
3. REMOVE CURB AND GUTTER TO NEAREST JOINT AND REPLACE

#### NOTES:

1. BUILD SIDEWALK AT LEAST 6' AWAY FROM TREES.

CITY OF ALBUQUERQUE DEPARTMENT OF MUNICIPAL DEVELOPMENT ENGINEERING DIVISION			
TITLE: CORONADO PARK SIDEWALK			
NOT FOR CONSTRUCTION	DESIGNED BY: D. DAVIDSON	LAST DESIGN UPDATE	Mo./Day/Yr. 07/01/19
	REVIEWED BY:		
City Project No.	Zone Map No. H14	Sheet 3	Of 3