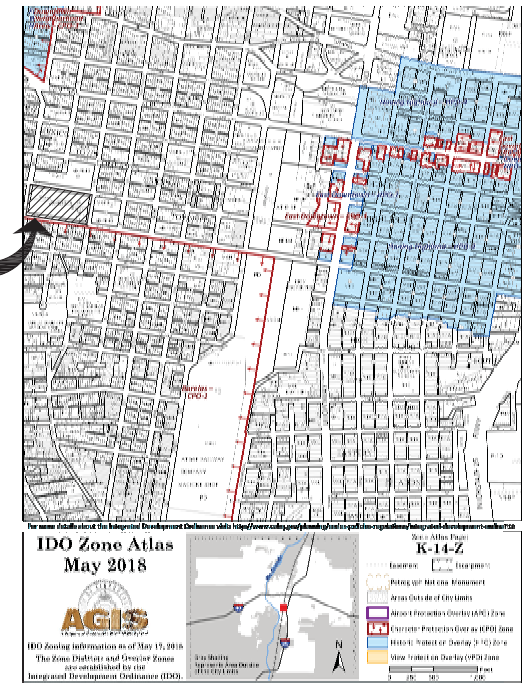


100% CD SET | ISSUED 02-18-2019



ZONE MAP: Atlas No. K-14-Z

COA Project No. 7880.20

REV.	SHEETS	CITY ENGINEER	DATE	USER DEPARTMENT	DATE	USER DEPARTMENT	DATE
ENGINEERS STAMP & SIGNATURE		APPROVED	ENGINEER	DATE	APPROVED FOR CONSTRUCTION		
		DRC Chairman			CITY ARCHITECT DATE		
		Transportation					
		Water/Wastewater					
		Hydrology			CITY ENGINEER DATE		
		Parks					
		Constr. Mngmt.					
DATE: 02/18/2019		COA PROJECT # MHA PROJECT #		7880.20 18-38	SHEET G000		

COA - NORTH FACADE FINISH REPLACEMENT
- AFD STATION 1

RECORD DRAWINGS

X 100% CD SET
DATE: 02-18-2019

COA PROJECT # : 7880.20

DATE:

CODE DATA

SCOPE OF WORK:	THE SCOPE OF THIS PROJECT INCLUDES REMOVING A PORTION OF THE EXISTING NORTH BUILDING EXTERIOR FACADE AND WINDOWS AND REPLACING IN-KIND THE FACADE AND WINDOWS WITH NEW. THE EXISTING CONCRETE DRIVE PAD AT THE TRUCK BAYS WILL BE REMOVED AND REPLACED WITH A NEW REINFORCED CONCRETE DRIVE PAD. THIS PROJECT INCLUDES NO ADDITIONAL SQUARE FOOTAGE AND THE CONSTRUCTION TYPE, INTERIOR CONFIGURATION, EGRESS PATHWAYS, AND ALL OTHER LIFE/SAFETY COMPONENTS REMAIN UNCHANGED.
CLASSIFICATION OF WORK:	THIS IS AN ALTERATION – LEVEL 1 PER THE IEBC LEVEL 1 ALTERATIONS INCLUDE THE REMOVAL AND REPLACEMENT OR THE COVERING OF EXISTING MATERIALS, ELEMENTS, EQUIPMENT, OR FIXTURES USING NEW MATERIALS, ELEMENTS, EQUIPMENT, OR FIXTURES THAT SERVE THE SAME PURPOSE. PER THE IEBC, ALL PORTIONS OF NEW WORK WILL MEET THE REQUIREMENTS FOR LIFE/SAFETY, ADA COMPLIANCE, AND ENERGY CONSERVATION (IECC) WHEREVER IT IS TECHNICALLY AND ECONOMICALLY FEASIBLE. ALL BUILDING AND SITE COMPONENTS SCHEDULED TO REMAIN SHALL REMAIN AS-IS.
APPLICABLE CODES:	2015 INTERNATIONAL BUILDING CODE 2015 INTERNATIONAL EXISTING BUILDING CODE 2015 INTERNATIONAL MECHANICAL CODE 2015 UNIFORM MECHANICAL CODE 2015 INTERNATIONAL PLUMBING CODE 2015 UNIFORM PLUMBING CODE 2015 INTERNATIONAL FIRE CODE 2017 NATIONAL ELECTRIC CODE 2010 DOJ ADA STANDARDS
PROPERTY: LEGAL	LOTS 5 THROUGH 12 BLK 35 ORIGINAL TOWNSITE OF ALBUQUERQUE ADDITION CITY OF ALBUQUERQUE, NEW MEXICO, BERNALILLO COUNTY
ZONING:	MX-FB-ID (MIXED USE)
EXISTING OCCUPANCY:	B (BUSINESS)
PROPOSED OCCUPANCY:	B (BUSINESS) – EXISTING, <u>NO CHANGE</u>
BUILDING CLASSIFICATION:	II-B – EXISTING, <u>NO CHANGE</u>
FIRE PROTECTION:	FULLY SPRINKLED – EXISTING, <u>NO CHANGE</u>
OCCUPANT LOAD:	EXISTING, <u>NO CHANGE</u>
EGRESS:	EXISTING, <u>NO CHANGE</u>
PLUMBING FIXTURES:	EXISTING, <u>NO CHANGE</u>

VICINITY MAP



GENERAL LEGEND ABBREVIATIONS

SHEET KEYED NOTES:		ARCHITECTURAL ABBREVIATIONS:	
○→	SEE KEYED NOTE ON THE SAME SHEET FOR ITEM BEING POINTED TO.	AF	ABOVE FINISHED FLOOR
		CL	CENTER LINE
		CONC	CONCRETE
		EQ	EQUAL
		FF OR FIN FL	FINISH FLOOR ELEVATION
○⇨	WINDOW TYPE REFER TO WINDOW SCHEDULE ON SHEET A101.	GAGE	GYP BD
		MIN	GYPSUM BOARD
		NO	MINIMUM
		OC	NUMBER
		SIM	ON CENTER
		SS	SIMILAR
		TYP	STAINLESS STEEL
		UNO	TYPICAL
		VIF	UNLESS NOTED OTHERWISE VERIFY IN FIELD

IECC REQUIREMENTS

BUILDING ENVELOPE REQUIREMENTS IECC 2009 (TABLE 502.12)			
CLIMATE ZONE = ZONE 4B (NON MARINE)		REQUIRED	PROVIDED
ROOF	ATTIC & OTHER	R-38	N/A
WALLS	METAL FRAMED	R-13+R-7.5ci	R-19+R-7.5ci
FLOORS	SLAB ON GRADE (UNHEATED)	NR	N/A
BUILDING ENVELOPE REQUIREMENTS : FENESTRATION (TABLE 502.3)			
FRAME OTHER THAN METAL		U-.40	N/A
METAL FRAME	CURTAIN WALL/STOREFRONT	U-0.50	V-0.50
	ENTRANCE DOOR	U-0.85	N/A
SHGC	PF < .25	0.40	0.40

AERIAL MAP



GENERAL NOTES

ARCHITECTURAL INFORMATION AND SPECIFICATIONS:

EXISTING CONDITIONS, THE EXISTENCE AND LOCATIONS OF SITE IMPROVEMENTS, UTILITIES, EXISTING BUILDING CONSTRUCTION, STRUCTURAL ELEMENTS AND OTHER CONSTRUCTION INDICATED AS EXISTING ARE NOT GUARANTEED. BEFORE BEGINNING WORK, INVESTIGATE AND VERIFY THE EXISTENCE AND LOCATION OF STRUCTURAL SYSTEMS AND OTHER CONSTRUCTION AFFECTING THE WORK. SHOULD DEVIATIONS EXIST BETWEEN THE EXISTING CONDITIONS AND THE PROJECT DRAWINGS, THE CONTRACTOR SHALL STOP WORK IMMEDIATELY AND NOTIFY THE ARCHITECT BEFORE PROCEEDING WITH WORK.

ARCHITECTURAL SPECIFICATIONS ARE ON THE DRAWINGS.

FIELD MEASUREMENTS: RECHECK MEASUREMENTS BEFORE INSTALLING EACH PRODUCT.

TOBACCO PRODUCTS (INCLUDING CHEWING TOBACCO), FOOD, AND DRINKS ARE NOT ALLOWED ON THE BUILDING SITE. THE PROJECT SITE SHALL BE KEPT CLEAN AT ALL TIMES.

CONTRACTOR TO PROVIDE PRODUCT SUBMITTALS FOR REVIEW AND APPROVAL.

THE PROJECT SHALL BE PHASED AS REQUIRED TO MAINTAIN THE CONTINUED OPERATION OF THE FACILITY. THE PROJECT SCHEDULE OF WORK SHALL BE COORDINATED WITH THE STATION CAPTAIN OR A STATION STAFF MEMBER ASSIGNED BY THE CAPTAIN.

ALL ITEMS DESIGNATED AS EXISTING TO REMAIN SHALL BE FULLY PROTECTED AND MAINTAINED DURING CONSTRUCTION. SHOULD EXISTING ELEMENTS INCUR DAMAGE FROM CONSTRUCTION, THE CONTRACTOR SHALL REPLACE IT IN ITS ENTIRETY TO MATCH EXISTING.

GENERAL ARCHITECTURAL SUPPORT AND ROUGH CARPENTRY ANCHORS AND FASTENERS: PROVIDE ANCHORS AND FASTENERS AS REQUIRED TO ANCHOR EACH COMPONENT SECURELY IN PLACE, AND ACCURATELY LOCATE AND ALIGN WITH OTHER PORTIONS OF THE WORK.

FURNISH AND INSTALL ALL BLOCKING, SUPPORTS, NON-STRUCTURAL NAILERS, AND STRIPPING AS REQUIRED FOR SECURING OTHER WORK SHOWN ON THE DRAWINGS.

GENERAL PRODUCTS TO BE USED ON THE PROJECT ALL PRODUCTS SHALL BE NEW AND CURRENT IN PRODUCTION.

STORE AND PROTECT ALL PRODUCTS IN ACCORDANCE WITH MANUFACTURER'S INSTRUCTIONS, WITH SEALS AND LABELS INTACT AND LEGIBLE.

PROVIDE A MINIMUM OF 10% ADDITIONAL STOCK FOR FINISH ITEMS AS PAINT, ETC.

SEALANT
INSTALL MILDEW RESISTANT SEALANT BETWEEN ALL DISSIMILAR MATERIALS WITH SEALANT APPROPRIATE FOR VERTICAL OR HORIZONTAL APPLICATIONS. COLOR SELECTED TO MATCH ADJACENT MATERIALS OF MANUFACTURER'S STANDARD COLORS.

PAINT
ALL NEW GYPSUM BOARD SURFACES SHALL BE FINISHED WITH A TEXTURE TO MATCH EXISTING. PROVIDE SAMPLE FOR REVIEW AND APPROVAL BY ARCHITECT.

PAINT SUBJECT TO COMPLIANCE WITH REQUIREMENTS PROVIDED BY BENJAMIN MOORE & CO. INTERIOR GYPSUM BOARD PRIMER: FACTORY-FORMULATED LATEX-BASED PRIMER FOR INTERIOR APPLICATION, PER BENJAMIN MOORE; MOORCRAFT SUPER SPEC LATEX ENAMEL UNDERCOATER & PRIMER SEALER NO. 253: APPLIED AT A DRY FILM THICKNESS OF NOT LESS THAN 1.2 MILS. INTERIOR FINISH COATS: INTERIOR SEMI-GLOSS ACRYLIC-LATEX ENAMEL FOR INTERIOR APPLICATION, PER BENJAMIN MOORE; MOORCRAFT SUPER SPEC LATEX SEMI-GLOSS ENAMEL NO. 276: APPLIED AT A DRY FILM THICKNESS OF NOT LESS THAN 1.2 MILS. APPLY PAINT AND PRIMER ACCORDING TO MANUFACTURER'S WRITTEN INSTRUCTIONS. USE APPLICATORS AND TECHNIQUES BEST SUITED FOR SUBSTRATE AND TYPE OF MATERIAL BEING APPLIED.

ALUMINUM STOREFRONT
PERFORMANCE REQUIREMENTS
GENERAL PERFORMANCE REQUIREMENTS:

- ALUMINUM-FRAMED SYSTEMS SHALL WITHSTAND THE EFFECTS OF THE FOLLOWING PERFORMANCE REQUIREMENTS WITHOUT EXCEEDING PERFORMANCE CRITERIA OR FAILURE DUE TO DEFECTIVE MANUFACTURE, FABRICATION, INSTALLATION, OR OTHER DEFECTS IN CONSTRUCTION:
- MOVEMENTS OF SUPPORTING STRUCTURE INDICATED ON DRAWINGS INCLUDING, BUT NOT LIMITED TO, STORY DRIFT AND DEFLECTION FROM UNIFORMLY DISTRIBUTED AND CONCENTRATED LIVE LOADS.
- DIMENSIONAL TOLERANCES OF BUILDING FRAME AND OTHER ADJACENT CONSTRUCTION.

FAILURE INCLUDES THE FOLLOWING:

- DEFLECTION EXCEEDING SPECIFIED LIMITS.
- THERMAL STRESSES TRANSFERRING TO BUILDING STRUCTURE.
- FRAMING MEMBERS TRANSFERRING STRESSES, INCLUDING THOSE CAUSED BY THERMAL AND STRUCTURAL MOVEMENTS TO GLAZING.
- NOISE OR VIBRATION CREATED BY WIND AND BY THERMAL AND STRUCTURAL MOVEMENTS.
- LOOSENING OR WEAKENING OF FASTENERS, ATTACHMENTS, AND OTHER COMPONENTS.

SEALANT FAILURE:

- DEFLECTION OF FRAMING MEMBERS:
 - DEFLECTION NORMAL TO WALL PLANE: LIMITED TO EDGE OF GLASS IN A DIRECTION PERPENDICULAR TO GLASS PLANE SHALL NOT EXCEED L/175 OF THE GLASS EDGE LENGTH FOR EACH INDIVIDUAL GLAZING LITE OR AN AMOUNT THAT RESTRICTS EDGE DEFLECTION OF INDIVIDUAL GLAZING LITES TO 3/4 INCH (19 MM), WHICHEVER IS LESS.
 - DEFLECTION PARALLEL TO GLAZING PLANE: LIMITED TO L/360 OF CLEAR SPAN OR 1/8 INCH (3.2 MM), WHICHEVER IS SMALLER.

SUBMITTALS
PRODUCT DATA:

- FOR EACH TYPE OF PRODUCT INDICATED. INCLUDE CONSTRUCTION DETAILS, MATERIAL DESCRIPTIONS, DIMENSIONS OF INDIVIDUAL COMPONENTS AND PROFILES, AND FINISHES FOR ALUMINUM-FRAMED SYSTEMS.

SHOP DRAWINGS:

- FOR ALUMINUM-FRAMED SYSTEMS. INCLUDE PLANS, ELEVATIONS, SECTIONS, DETAILS, AND ATTACHMENTS TO OTHER WORK. INCLUDE DETAILS OF PROVISIONS FOR SYSTEM EXPANSION AND CONTRACTION AND FOR DRAINAGE OF MOISTURE IN THE SYSTEM TO THE EXTERIOR. FOR WINDOW DETAILS, INCLUDE SUBSILL.

QUALIFICATION DATA:

- FOR QUALIFIED INSTALLER.

WELDING CERTIFICATES.

PRODUCT TEST REPORTS:

- BASED ON EVALUATION OF COMPREHENSIVE TESTS PERFORMED BY A QUALIFIED TESTING AGENCY, FOR ALUMINUM-FRAMED SYSTEMS, INDICATING COMPLIANCE WITH PERFORMANCE REQUIREMENTS.

SOURCE QUALITY-CONTROL REPORTS.

QUALITY ASSURANCE
INSTALLER QUALIFICATIONS: MANUFACTURER'S AUTHORIZED REPRESENTATIVE WHO IS TRAINED AND APPROVED FOR INSTALLATION OF UNITS REQUIRED FOR THIS PROJECT.

SOURCE LIMITATIONS FOR ALUMINUM-FRAMED SYSTEMS: OBTAIN FROM SINGLE SOURCE FROM SINGLE MANUFACTURER.

WELDING QUALIFICATIONS: QUALIFY PROCEDURES AND PERSONNEL ACCORDING TO AWS D1.2, "STRUCTURAL WELDING CODE – ALUMINUM."

PROJECT CONDITIONS
FIELD MEASUREMENTS: VERIFY ACTUAL LOCATIONS OF STRUCTURAL SUPPORTS FOR ALUMINUM-FRAMED SYSTEMS BY FIELD MEASUREMENTS BEFORE FABRICATION AND INDICATE MEASUREMENTS ON SHOP DRAWINGS.

WARRANTY
WARRANTY PERIOD: 10 YEARS FROM DATE OF SUBSTANTIAL COMPLETION.

PRODUCTS
MANUFACTURERS: SUBJECT TO COMPLIANCE WITH REQUIREMENTS, AVAILABLE MANUFACTURERS OFFERING PRODUCTS THAT MAY BE INCORPORATED INTO THE WORK INCLUDE, BUT ARE NOT LIMITED TO, THE FOLLOWING:

- BASIS-OF-DESIGN PRODUCT: SUBJECT TO COMPLIANCE WITH REQUIREMENTS, PROVIDE KAWNEER 451 WITH GLASSVENT WINDOWS OR COMPARABLE PRODUCT BY ONE OF THE FOLLOWING:
 - KAWNEER NORTH AMERICA: AN ALCOA COMPANY.
 - TUBULITE.
 - ARCADIA.
 - OR APPROVED EQUAL.

MATERIALS
ALUMINUM: ALLOY AND TEMPER RECOMMENDED BY MANUFACTURER FOR TYPE OF USE AND FINISH INDICATED.

SHEET AND PLATE: ASTM B 209 (ASTM B 209M).

EXTRUDED BARS, RODS, PROFILES, AND TUBES: ASTM B 221 (ASTM B 221M).

EXTRUDED STRUCTURAL PIPE AND TUBES: ASTM B 429.

STRUCTURAL PROFILES: ASTM B 308/B 308M.

FRAMING SYSTEMS
FRAMING MEMBERS: MANUFACTURER'S STANDARD EXTRUDED-ALUMINUM FRAMING MEMBERS OF THICKNESS REQUIRED AND REINFORCED AS REQUIRED TO SUPPORT IMPOSED LOADS.

CONSTRUCTION: THERMALLY IMPROVED.

GLAZING SYSTEM: RETAINED MECHANICALLY WITH GASKETS ON FOUR SIDES.

GLAZING PLANE: CENTER.

BRACKETS AND REINFORCEMENTS: MANUFACTURER'S STANDARD HIGH-STRENGTH ALUMINUM WITH NONSTAINING, NONFERROUS SHIMS FOR ALIGNING SYSTEM COMPONENTS.

FASTENERS AND ACCESSORIES: MANUFACTURER'S STANDARD CORROSION-RESISTANT, NONSTAINING, NONBLEEDING FASTENERS AND ACCESSORIES COMPATIBLE WITH ADJACENT MATERIALS.

USE SELF-LOCKING DEVICES WHERE FASTENERS ARE SUBJECT TO LOOSENING OR TURNING OUT FROM THERMAL AND STRUCTURAL MOVEMENTS, WIND LOADS, OR VIBRATION.

REINFORCE MEMBERS AS REQUIRED TO RECEIVE FASTENER THREADS.

CONCEALED FLASHING: MANUFACTURER'S STANDARD CORROSION-RESISTANT, NONSTAINING, NONBLEEDING FLASHING COMPATIBLE WITH ADJACENT MATERIALS.

FRAMING SYSTEM GASKETS AND SEALANTS: MANUFACTURER'S STANDARD, RECOMMENDED BY MANUFACTURER FOR JOINT TYPE.

SEALANTS USED INSIDE THE WEATHERPROOFING SYSTEM SHALL HAVE A VOC CONTENT OF 250 G/L OR LESS WHEN CALCULATED ACCORDING TO 40 CFR 59, SUBPART D (EPA METHOD 24).

FABRICATION
FORM OR EXTRUDE ALUMINUM SHAPES BEFORE FINISHING.

WELD IN CONCEALED LOCATIONS TO GREATEST EXTENT POSSIBLE TO MINIMIZE DISTORTION OR DISCOLORATION OF FINISH. REMOVE WELD SPATTER AND WELDING OXIDES FROM EXPOSED SURFACES BY DESCALING OR GRINDING.

FRAMING MEMBERS, GENERAL: FABRICATE COMPONENTS THAT, WHEN ASSEMBLED, HAVE THE FOLLOWING CHARACTERISTICS:

- PROFILES THAT ARE SHARP, STRAIGHT, AND FREE OF DEFECTS OR DEFORMATIONS.
- ACCURATELY FITTED JOINTS WITH ENDS COPED OR MITERED.
- MEANS TO DRAIN WATER PASSING JOINTS, CONDENSATION WITHIN FRAMING MEMBERS, AND MOISTURE MIGRATING WITHIN THE SYSTEM TO EXTERIOR.
- PHYSICAL AND THERMAL ISOLATION OF GLAZING FROM FRAMING MEMBERS.
- ACCOMMODATIONS FOR THERMAL AND MECHANICAL MOVEMENTS OF GLAZING AND FRAMING TO MAINTAIN REQUIRED GLAZING EDGE CLEARANCES.
- PROVISIONS FOR FIELD REPLACEMENT OF GLAZING FROM EXTERIOR.
- FASTENERS, ANCHORS, AND CONNECTION DEVICES THAT ARE CONCEALED FROM VIEW TO GREATEST EXTENT POSSIBLE.

STOREFRONT FRAMING: FABRICATE COMPONENTS FOR ASSEMBLY USING SCREW-SPLINE SYSTEM.

INSTALLATION
COMPLY WITH MANUFACTURER'S WRITTEN INSTRUCTIONS.

DO NOT INSTALL DAMAGED COMPONENTS.

FIT JOINTS TO PRODUCE HAIRLINE JOINTS FREE OF BURRS AND DISTORTION.

RIGIDLY SECURE NON-MOVEMENT JOINTS.

INSTALL ANCHORS WITH SEPARATORS AND ISOLATORS TO PREVENT METAL CORROSION AND ELECTROLYTIC DETERIORATION.

SEAL JOINTS WATERTIGHT UNLESS OTHERWISE INDICATED.

METAL PROTECTION: WHERE ALUMINUM WILL CONTACT DISSIMILAR METALS, PROTECT AGAINST GALVANIC ACTION BY PAINTING CONTACT SURFACES WITH PRIMER OR APPLYING SEALANT OR TAPE, OR BY INSTALLING NONCONDUCTIVE SPACERS AS RECOMMENDED BY MANUFACTURER FOR THIS PURPOSE. WHERE ALUMINUM WILL CONTACT CONCRETE OR MASONRY, PROTECT AGAINST CORROSION BY PAINTING CONTACT SURFACES WITH BITUMINOUS PAINT.

INSTALL COMPONENTS TO DRAIN WATER PASSING JOINTS, CONDENSATION OCCURRING WITHIN FRAMING MEMBERS, AND MOISTURE MIGRATING WITHIN THE SYSTEM TO EXTERIOR.

SET CONTINUOUS SILL MEMBERS AND FLASHING IN FULL SEALANT BED.

INSTALL COMPONENTS PLUMB AND TRUE IN ALIGNMENT WITH ESTABLISHED LINES AND GRADES, AND WITHOUT WARP OR RACK.

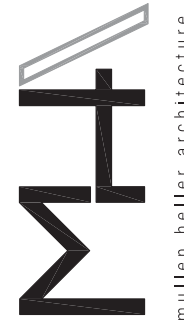
INSTALL PERIMETER JOINT SEALANTS TO PRODUCE WEATHER-TIGHT INSTALLATION.

GLAZING
GENERAL PERFORMANCE REQUIREMENTS:
INSTALLED GLAZING SYSTEMS SHALL WITHSTAND NORMAL THERMAL MOVEMENT AND WIND AND IMPACT LOADS (WHERE APPLICABLE) WITHOUT FAILURE, INCLUDING LOSS OR GLASS BREAKAGE ATTRIBUTABLE TO THE FOLLOWING: DEFECTIVE MANUFACTURE, FABRICATION, OR INSTALLATION; FAILURE OF SEALANTS OR GASKETS TO REMAIN WATERTIGHT AND AIRTIGHT; DETERIORATION OF GLAZING MATERIALS; OR OTHER DEFECTS IN CONSTRUCTION.

THERMAL MOVEMENTS: ALLOW FOR THERMAL MOVEMENTS FROM AMBIENT AND SURFACE TEMPERATURE CHANGES ACTING ON GLASS FRAMING MEMBERS AND GLAZING COMPONENTS.

COMPLY WITH COMBINED WRITTEN INSTRUCTIONS OF MANUFACTURERS OF GLASS, SEALANTS, GASKETS, AND OTHER GLAZING MATERIALS, UNLESS MORE STRINGENT REQUIREMENTS ARE INDICATED, INCLUDING THOSE IN REFERENCED GLAZING PUBLICATIONS.

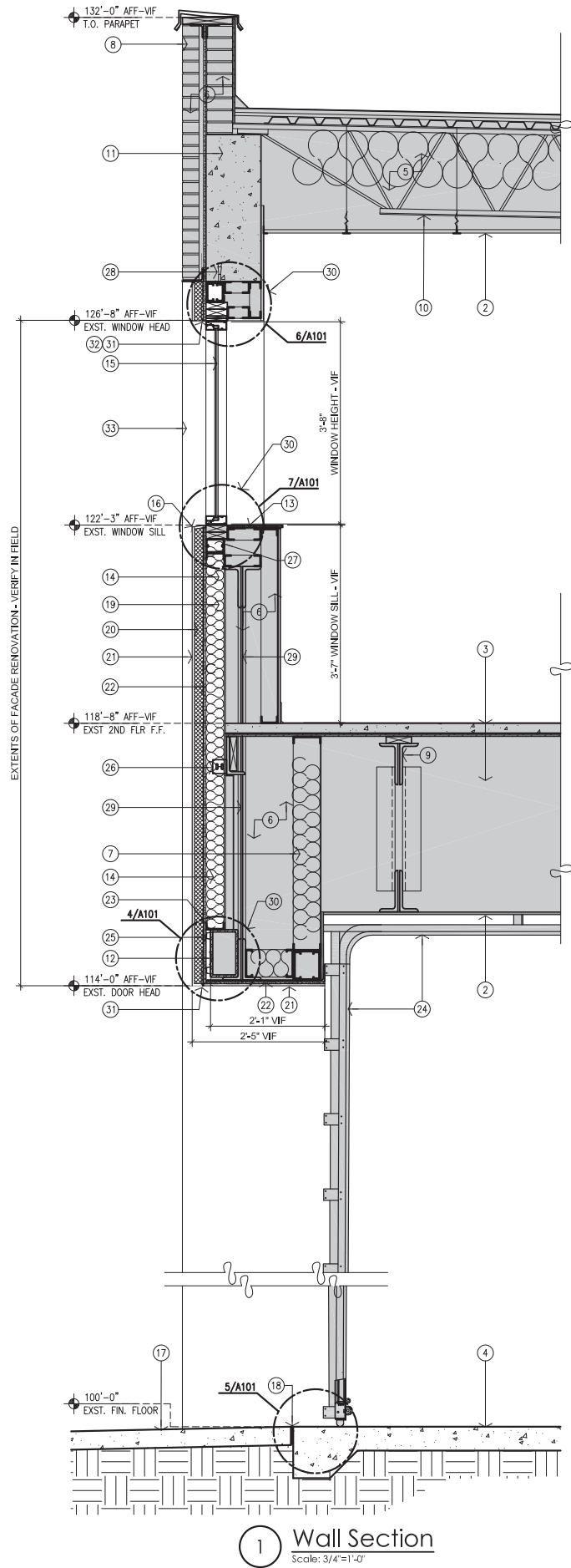
REV	DATE	DESCRIPTION
5		
4		
3		
2		
1		



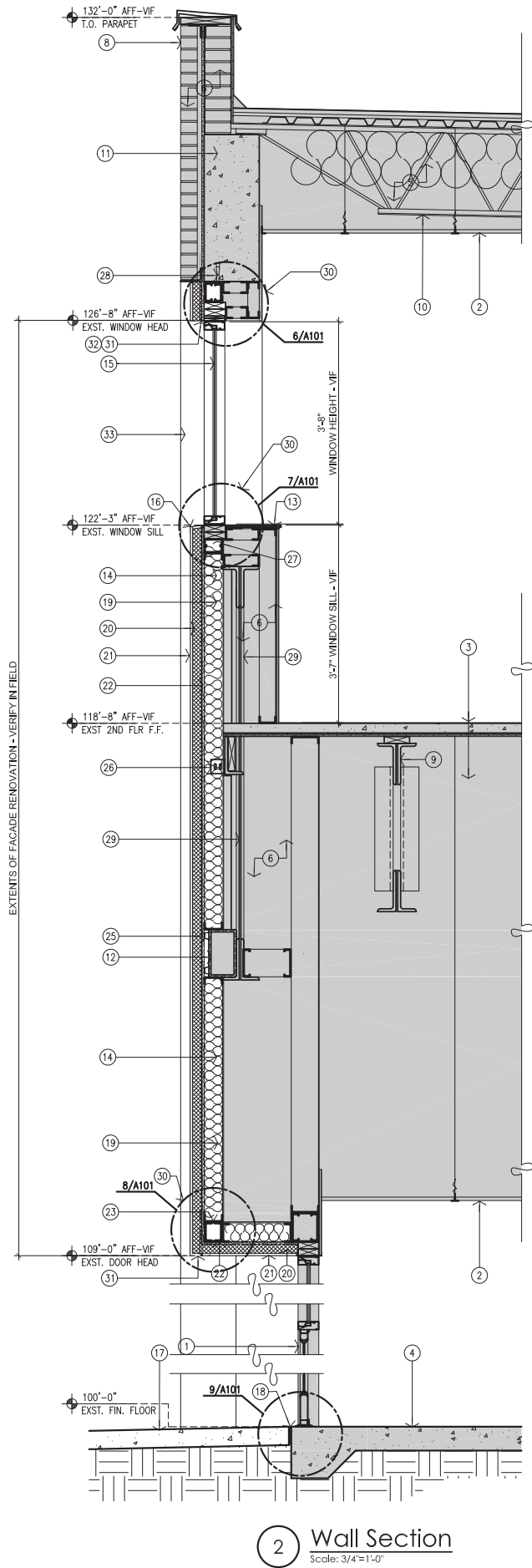
MULLEN HELLER ARCHITECTURE
1718 CENTRAL AVE SW | STE D
ALBUQUERQUE, NM 87109
P | 505.268.4144
F | 505.268.4244
www.mullenheller.com

JOB NUMBER	7880.20/18-38
DRAWN BY	SJ/MW
PROJECT MGR	MMM
DATE	02-18-2019
PHASE	100% CD's

PROJECT	COA N. FACADE FINISH REPLACEMENT - AFD STATION 1
	724 Silver Ave. SW
	Albuquerque, NM 87102
TITLE	Code Analysis & General Notes



1 Wall Section
Scale: 3/4"=1'-0"




2 Wall Section
Scale: 3/4"=1'-0"

GENERAL NOTES:

- [A] ALL DIMENSIONS ARE FROM FACE OF STUD TO FACE OF STUD, UNLESS OTHERWISE NOTED. DIMENSIONS ARE PROVIDED FOR REFERENCE ONLY - THE CONTRACTOR SHALL FIELD VERIFY ALL DIMENSIONS. REFER TO GENERAL NOTE C.
- [B] ALL EXISTING ELEMENTS ARE TO REMAIN UNLESS NOTED OTHERWISE. THE CONTRACTOR SHALL PROTECT AND MAINTAIN ALL EXISTING ELEMENTS DURING CONSTRUCTION. CONTRACTOR SHALL REPLACE ALL DAMAGED AREAS CAUSED BY THE GENERAL CONTRACTOR AND ITS SUBCONTRACTORS AT THE CONTRACTOR'S EXPENSE.
- [C] THE CONTRACTOR SHALL VERIFY ALL DIMENSIONS AND CONDITIONS IN THE FIELD. IF DIMENSIONAL ERROR, VARIANCES, AND/OR CONFLICTS EXIST, AS DESCRIBED WITHIN THE CONSTRUCTION DOCUMENTS, OR CONDITIONS ARE ENCOUNTERED THAT ARE NOT COVERED IN THE DRAWINGS, THE CONTRACTOR SHALL NOTIFY THE ARCHITECT BEFORE COMMENCING THAT PORTION OF THE WORK.
- [D] THE CONTRACTOR SHALL PERFORM A PRE-INSPECTION OF THE PROJECT BUILDING TO FAMILIARIZE THEMSELVES WITH THE EXISTING CONDITIONS AND THE REQUIRED SCOPE OF WORK. THE OWNER'S REPRESENTATIVE WILL BE AVAILABLE TO HAVE THE BUILDING INSPECTED. NO CONSIDERATION SHALL BE GRANTED FOR ANY ALLEGED MISUNDERSTANDING OF THE MATERIAL TO BE FURNISHED, WORK TO BE PERFORMED, AND FOR ANY DEFECTS IN THE FINAL PRODUCT THAT ARE THE RESULT OF THE ABSENCE OF A PRE-INSPECTION OF THE SITE.
- [E] ALL CONSTRUCTION SHALL BE IN COMPLIANCE WITH INTERNATIONAL BUILDING CODE AND ALL OTHER APPLICABLE MODEL CODES, LOCAL CODES, LAWS AND ORDINANCES.
- [F] THE FACILITY SHALL REMAIN FULLY OPERATIONAL DURING THE COURSE OF SITE WORK. SCHEDULING OF WORK SHALL BE COORDINATED WITH THE STATION CAPTAIN OR A STAFF MEMBER ASSIGNED BY THE CAPTAIN.

LEGEND:

-  DENOTES EXISTING STRUCTURAL & ARCHITECTURAL BUILDING ELEMENTS TO REMAIN. FIELD VERIFY EXISTING CONDITION FOR COMPATIBILITY WITH NEW STUD FRAMING.

KEYED NOTES:

- [1] EXISTING STOREFRONT DOOR TO REMAIN. FIELD VERIFY SIZE AND LOCATION. PROTECT DURING CONSTRUCTION.
- [2] EXISTING CEILING SYSTEM TO REMAIN.
- [3] EXISTING FLOOR STRUCTURE AND FINISH TO REMAIN. PROTECT DURING CONSTRUCTION.
- [4] EXISTING CONCRETE SLAB TO REMAIN.
- [5] EXISTING ROOF STRUCTURE TO REMAIN.
- [6] EXISTING EXTERIOR WALL ASSEMBLY TO REMAIN. FIELD VERIFY.
- [7] EXISTING WALL-CAVITY BATT INSULATION TO REMAIN. CONTRACTOR TO CONFIRM CONTINUITY AND REPLACE AS REQUIRED TO MEET IECC REQUIREMENTS.
- [8] EXISTING EXTERIOR BRICK VENEER TO REMAIN. PROTECT DURING CONSTRUCTION.
- [9] EXISTING STEEL BAR FLOOR JOISTS WITH BUILT-UP LEDGER ANGLE AND WOOD BLOCKING TO REMAIN. FIELD VERIFY SIZE AND LOCATION. REFER TO STRUCTURE.
- [10] EXISTING STEEL BAR ROOF JOISTS TO REMAIN. FIELD VERIFY SIZE AND LOCATION. REFER TO STRUCTURE.
- [11] EXISTING CONCRETE BEAM TO REMAIN. FIELD VERIFY SIZE AND LOCATION. PREP FOR NEW METAL STUD ATTACHMENT. REFER TO STRUCTURE.
- [12] EXISTING TUBE STEEL BEAM TO REMAIN. FIELD VERIFY SIZE AND LOCATION. PREP FOR NEW METAL STUD ATTACHMENT. REFER TO STRUCTURE.
- [13] EXISTING WOOD SILL CAP TO BE REMOVED AND REINSTALLED. PROTECT DURING CONSTRUCTION. NEW WHERE SHOWN ON PLAN.
- [14] NEW (C4x18) 4" 18 GAUGE METAL STUDS AT 16" ON CENTER. ANCHOR TO EXISTING STEEL BEAM OR CONCRETE BEAM AT THE BOTTOM AND TOP OF THE RUN RESPECTIVELY. REFER TO STRUCTURE.
- [15] NEW ALUMINUM STOREFRONT WINDOW, DARK BRONZE FINISH TO MATCH EXISTING. REFER TO SHEET A101
- [16] NEW PREFINISHED METAL SILL FLASHING. SLOPED TO DRAIN.
- [17] NEW REINFORCED CONCRETE SLAB. REFER TO SHEET 10/D101.
- [18] NEW 2" EXPANSION JOINT MATERIAL.
- [19] NEW R-19 BATT INSULATION.
- [20] NEW 2" (R-7.5 MIN) CONTINUOUS RIGID INSULATION BOARD. STAGGER JOINTS.
- [21] NEW 2-COAT STUCCO WITH ELASTOMERIC FINISH OVER EXPANDED METAL LATHE.
- [22] NEW 5/8" EXTERIOR GYP BOARD SHEATHING WITH CONTINUOUS WEATHER BARRIER, TYVEK COMMERCIAL WRAP 'D' WITH INTEGRAL DRAINAGE PLANE.
- [23] CONTINUOUS 18 GAUGE TRACK.
- [24] EXISTING OVERHEAD DOOR AND TRACK TO REMAIN. PROTECT DURING CONSTRUCTION.
- [25] NEW 1" HORIZONTAL HAT CHANNEL AT 12" ON CENTER MAXIMUM.
- [26] NEW VERTICAL SLIDE CLIP AT EACH STUD REFER TO STRUCTURAL.
- [27] NEW (2) STUD SILL PLATE AT NEW WINDOWS. REFER TO STRUCTURE.
- [28] REFER TO STRUCTURE FOR NEW STUD ATTACHMENT TO EXISTING CONCRETE BEAM.
- [29] EXISTING WINDOW TRUSS TO REMAIN. FIELD VERIFY.
- [30] REFER TO MANUFACTURER'S DETAILS STO 63a.05.
- [31] NEW PREFINISHED METAL HEAD DRIP FLASHING, COLOR TO MATCH NEW STUCCO.
- [32] NEW PREFINISHED METAL TRIM FLASHING, COLOR TO MATCH STUCCO.
- [33] STUCCO FINISHED RETURN ON BOTH SIDES OF WINDOW.

Fire Station 1 Drive Pad,
COA PN 802440

Work was constructed in
compliance with details provided
in work order and City of
Albuquerque Standard
Specifications and Drawings.

