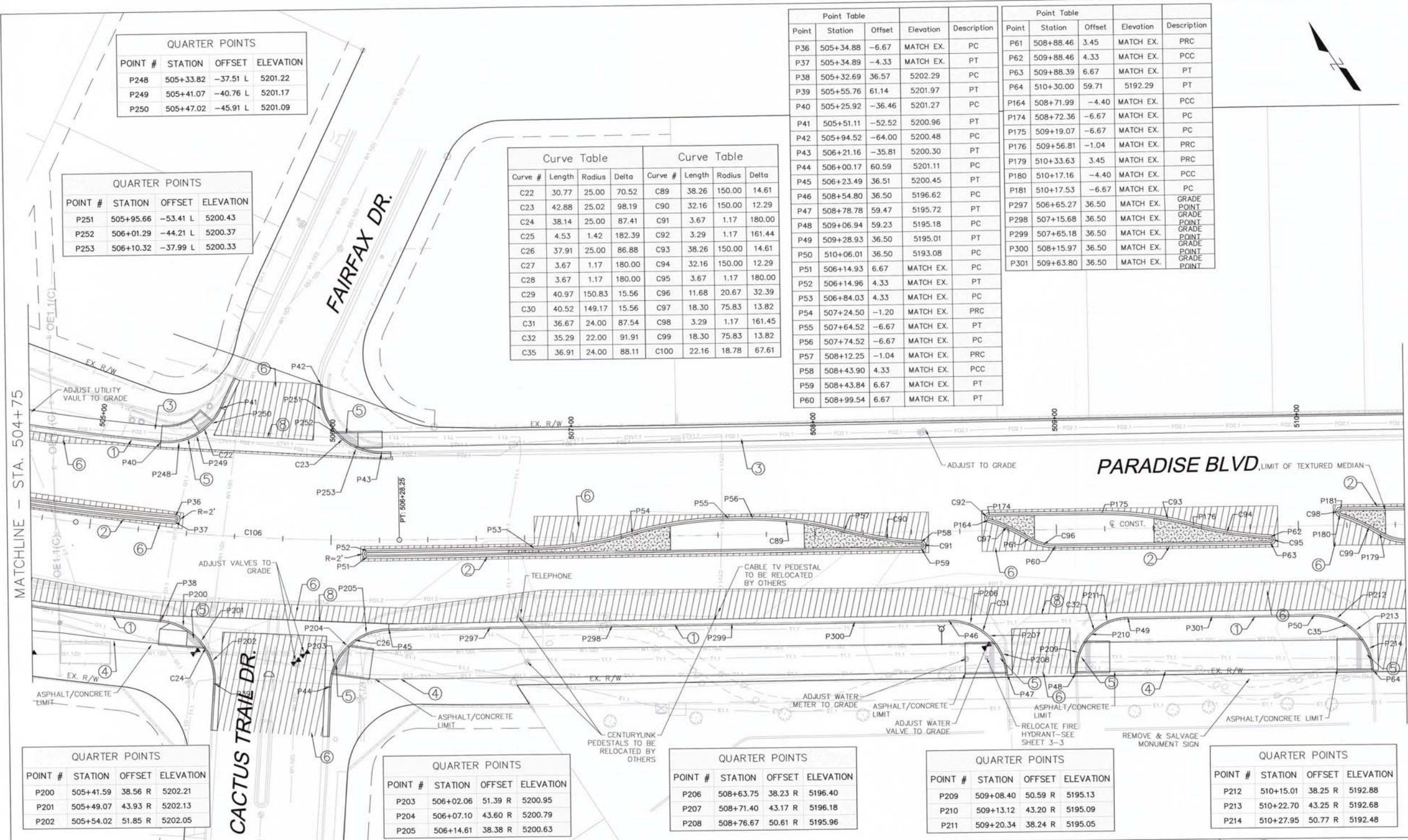


PROPOSED ASPHALT TRAIL PAVEMENT SECTION
NOT TO SCALE



Sheet No. 1-16

[illegible]



QUARTER POINTS			
POINT #	STATION	OFFSET	ELEVATION
P248	505+33.82	-37.51 L	5201.22
P249	505+41.07	-40.76 L	5201.17
P250	505+47.02	-45.91 L	5201.09

QUARTER POINTS			
POINT #	STATION	OFFSET	ELEVATION
P251	505+95.66	-53.41 L	5200.43
P252	506+01.29	-44.21 L	5200.37
P253	506+10.32	-37.99 L	5200.33

Curve Table				Curve Table			
Curve #	Length	Radius	Delta	Curve #	Length	Radius	Delta
C22	30.77	25.00	70.52	C89	38.26	150.00	14.61
C23	42.88	25.02	98.19	C90	32.16	150.00	12.29
C24	38.14	25.00	87.41	C91	3.67	1.17	180.00
C25	4.53	1.42	182.39	C92	3.29	1.17	161.44
C26	37.91	25.00	86.88	C93	38.26	150.00	14.61
C27	3.67	1.17	180.00	C94	32.16	150.00	12.29
C28	3.67	1.17	180.00	C95	3.67	1.17	180.00
C29	40.97	150.83	15.56	C96	11.68	20.67	32.39
C30	40.52	149.17	15.56	C97	18.30	75.83	13.82
C31	36.67	24.00	87.54	C98	3.29	1.17	161.45
C32	35.29	22.00	91.91	C99	18.30	75.83	13.82
C35	36.91	24.00	88.11	C100	22.16	18.78	67.61

Point Table				
Point	Station	Offset	Elevation	Description
P36	505+34.88	-6.67	MATCH EX.	PC
P37	505+34.89	-4.33	MATCH EX.	PT
P38	505+32.69	36.57	5202.29	PC
P39	505+55.76	61.14	5201.97	PT
P40	505+25.92	-36.46	5201.27	PC
P41	505+51.11	-52.52	5200.96	PT
P42	505+94.52	-64.00	5200.48	PC
P43	506+21.16	-35.81	5200.30	PT
P44	506+00.17	60.59	5201.11	PC
P45	506+23.49	36.51	5200.45	PT
P46	508+54.80	36.50	5196.62	PC
P47	508+78.78	59.47	5195.72	PT
P48	509+06.94	59.23	5195.18	PC
P49	509+28.93	36.50	5195.01	PT
P50	510+06.01	36.50	5193.08	PC
P51	506+14.93	6.67	MATCH EX.	PC
P52	506+14.96	4.33	MATCH EX.	PT
P53	506+84.03	4.33	MATCH EX.	PC
P54	507+24.50	-1.20	MATCH EX.	PRC
P55	507+64.52	-6.67	MATCH EX.	PT
P56	507+74.52	-6.67	MATCH EX.	PC
P57	508+12.25	-1.04	MATCH EX.	PRC
P58	508+43.90	4.33	MATCH EX.	PCC
P59	508+43.84	6.67	MATCH EX.	PT
P60	508+99.54	6.67	MATCH EX.	PT

Point Table				
Point	Station	Offset	Elevation	Description
P61	508+88.46	3.45	MATCH EX.	PRC
P62	509+88.46	4.33	MATCH EX.	PCC
P63	509+88.39	6.67	MATCH EX.	PT
P64	510+30.00	59.71	5192.29	PT
P164	508+71.99	-4.40	MATCH EX.	PCC
P174	508+72.36	-6.67	MATCH EX.	PC
P175	509+19.07	-6.67	MATCH EX.	PC
P176	509+56.81	-1.04	MATCH EX.	PRC
P179	510+33.63	3.45	MATCH EX.	PRC
P180	510+17.16	-4.40	MATCH EX.	PCC
P181	510+17.53	-6.67	MATCH EX.	PC
P297	506+65.27	36.50	MATCH EX.	GRADE POINT
P298	507+15.68	36.50	MATCH EX.	GRADE POINT
P299	507+65.18	36.50	MATCH EX.	GRADE POINT
P300	508+15.97	36.50	MATCH EX.	GRADE POINT
P301	509+63.80	36.50	MATCH EX.	GRADE POINT

MATCHLINE - STA. 504+75

MATCHLINE - STA. 510+43

QUARTER POINTS			
POINT #	STATION	OFFSET	ELEVATION
P200	505+41.59	38.56 R	5202.21
P201	505+49.07	43.93 R	5202.13
P202	505+54.02	51.85 R	5202.05

QUARTER POINTS			
POINT #	STATION	OFFSET	ELEVATION
P203	506+02.06	51.39 R	5200.95
P204	506+07.10	43.60 R	5200.79
P205	506+14.61	38.38 R	5200.63

QUARTER POINTS			
POINT #	STATION	OFFSET	ELEVATION
P206	508+63.75	38.23 R	5196.40
P207	508+71.40	43.17 R	5196.18
P208	508+76.67	50.61 R	5195.96

QUARTER POINTS			
POINT #	STATION	OFFSET	ELEVATION
P209	509+08.40	50.59 R	5195.13
P210	509+13.12	43.20 R	5195.09
P211	509+20.34	38.24 R	5195.05

QUARTER POINTS			
POINT #	STATION	OFFSET	ELEVATION
P212	510+15.01	38.25 R	5192.88
P213	510+22.70	43.25 R	5192.68
P214	510+27.95	50.77 R	5192.48

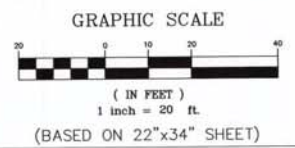
LEGEND

NEW RIGHT OF WAY	TCP	TEXTURED CONCRETE
EX. ROADWAY EASEMENT	NEW ASPHALT	NEW LANDSCAPE GRAVEL (2-3")
ASPHALT REMOVAL AND REPLACEMENT		

NOTES:

1. ALL DIMENSIONS ARE TO FACE OF CURB, INCLUDING POINT TABLE, CURVE TABLE, & QUARTER POINTS.
2. FOR RAMP DETAILS SEE SHEETS 3-7 TO 3-16.
3. ALL UTILITY APPURTENANCES WITHIN MICROSEAL AREA SHALL BE ADJUSTED TO GRADE.

- KEYED NOTES:**
- ① BUILD STD. CONCRETE C&G PER COA STD. DWG. 2415A
 - ② BUILD MEDIAN C&G PER COA STD. DWG. 2415B, 2501 & 2502
 - ③ BUILD CONCRETE SIDEWALK PER COA STD. DWG. 2430
 - ④ BUILD ASPHALT TRAIL PER SHEET 1-16
 - ⑤ BUILD CURB RAMP PER NMDOT STD. DWGS. 608-001-1 TO 608-001-8
 - ⑥ HATCHED AREA REPRESENTS NEW ASPHALT
 - ⑦ HATCHED AREA REPRESENTS NEW LANDSCAPE GRAVEL. MATCH EXISTING COLOR & SIZE.
 - ⑧ BUILD CONCRETE VALLEY/ALLEY GUTTER PER COA STD. DWG. 2420 & 2466
 - ⑨ BUILD DEPRESSED CURB & GUTTER PER STD DWG 2415A.



CITY OF ALBUQUERQUE
DEPARTMENT OF MUNICIPAL DEVELOPMENT
ENGINEERING DIVISION

TITLE: PARADISE BOULEVARD IMPROVEMENTS
ROADWAY GEOMETRICS
STA. 504+75 TO STA. 510+25

City Project No. 648092

Zone Map No. B-12, C-12, C-13

Sheet No. 2-3

DESIGN REVIEW COMMITTEE
OCT 02 2018

CITY ENGINEER
OCT 02 2018

REVISIONS

NO.	DATE	REVISIONS

DESIGNED BY SVL
DRAWN BY ER
CHECKED BY JKP

DATE 02/2017
DATE 02/2017
DATE 02/2017

AS BUILT INFORMATION

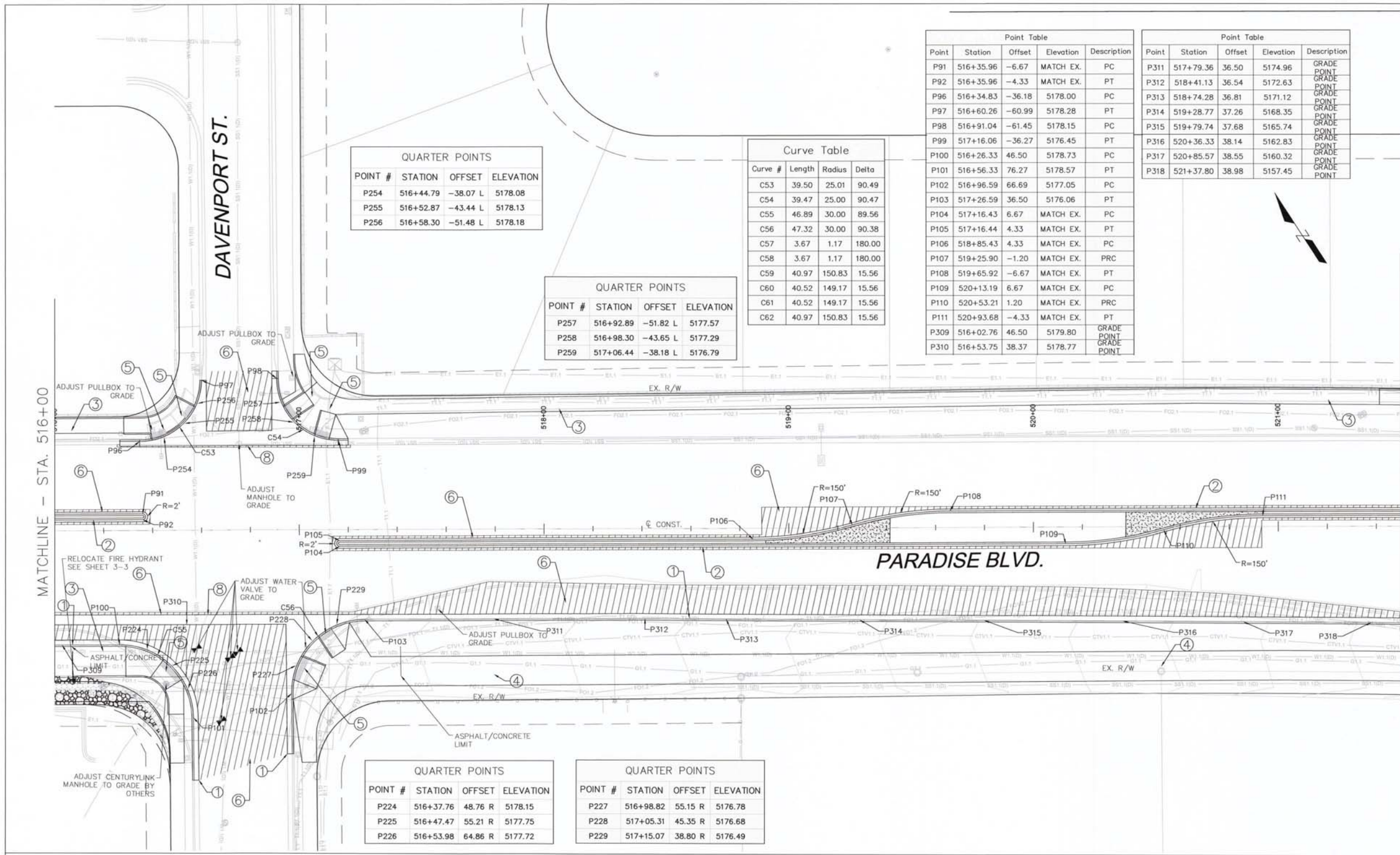
CONTRACTOR	DATE
INSPECTOR	DATE
FIELD ENGINEER	DATE
VERIFICATION BY	DATE
CORRECTED BY	DATE

BENCH MARKS

A COA STATION 3 1/4" ALUMINUM DISK STAMPED "7-C12 2003" SET FLUSH WITH TOP OF THE CURB LOCATED AT THE INTERSECTION OF PARADISE BOULEVARD AND DAVENPORT STREET 112 FEET EAST OF THE DAVENPORT STREET CENTERLINE ON THE NORTH CURB.

MICRO-FILM INFORMATION

RECORDED BY	DATE
NO.	



QUARTER POINTS			
POINT #	STATION	OFFSET	ELEVATION
P254	516+44.79	-38.07 L	5178.08
P255	516+52.87	-43.44 L	5178.13
P256	516+58.30	-51.48 L	5178.18

QUARTER POINTS			
POINT #	STATION	OFFSET	ELEVATION
P257	516+92.89	-51.82 L	5177.57
P258	516+98.30	-43.65 L	5177.29
P259	517+06.44	-38.18 L	5176.79

Curve Table			
Curve #	Length	Radius	Delta
C53	39.50	25.01	90.49
C54	39.47	25.00	90.47
C55	46.89	30.00	89.56
C56	47.32	30.00	90.38
C57	3.67	1.17	180.00
C58	3.67	1.17	180.00
C59	40.97	150.83	15.56
C60	40.52	149.17	15.56
C61	40.52	149.17	15.56
C62	40.97	150.83	15.56

Point Table				
Point	Station	Offset	Elevation	Description
P91	516+35.96	-6.67	MATCH EX.	PC
P92	516+35.96	-4.33	MATCH EX.	PT
P96	516+34.83	-36.18	5178.00	PC
P97	516+60.26	-60.99	5178.28	PT
P98	516+91.04	-61.45	5178.15	PC
P99	517+16.06	-36.27	5176.45	PT
P100	516+26.33	46.50	5178.73	PC
P101	516+56.33	76.27	5178.57	PT
P102	516+96.59	66.69	5177.05	PC
P103	517+26.59	36.50	5176.06	PT
P104	517+16.43	6.67	MATCH EX.	PC
P105	517+16.44	4.33	MATCH EX.	PT
P106	518+85.43	4.33	MATCH EX.	PC
P107	519+25.90	-1.20	MATCH EX.	PRC
P108	519+65.92	-6.67	MATCH EX.	PT
P109	520+13.19	6.67	MATCH EX.	PC
P110	520+53.21	1.20	MATCH EX.	PRC
P111	520+93.68	-4.33	MATCH EX.	PT
P309	516+02.76	46.50	5179.80	GRADE POINT
P310	516+53.75	38.37	5178.77	GRADE POINT

Point Table				
Point	Station	Offset	Elevation	Description
P311	517+79.36	36.50	5174.96	GRADE POINT
P312	518+41.13	36.54	5172.63	GRADE POINT
P313	518+74.28	36.81	5171.12	GRADE POINT
P314	519+28.77	37.26	5168.35	GRADE POINT
P315	519+79.74	37.68	5165.74	GRADE POINT
P316	520+36.33	38.14	5162.83	GRADE POINT
P317	520+85.57	38.55	5160.32	GRADE POINT
P318	521+37.80	38.98	5157.45	GRADE POINT

QUARTER POINTS			
POINT #	STATION	OFFSET	ELEVATION
P224	516+37.76	48.76 R	5178.15
P225	516+47.47	55.21 R	5177.75
P226	516+53.98	64.86 R	5177.72

QUARTER POINTS			
POINT #	STATION	OFFSET	ELEVATION
P227	516+98.82	55.15 R	5176.78
P228	517+05.31	45.35 R	5176.68
P229	517+15.07	38.80 R	5176.49

LEGEND

NEW RIGHT OF WAY

EX. ROADWAY EASEMENT

ASPHALT REMOVAL AND REPLACEMENT

TOP

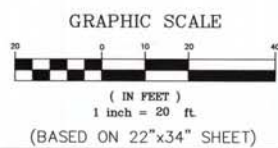
NEW ASPHALT

TEXTURED CONCRETE

NEW LANDSCAPE GRAVEL (2'-3')

- NOTES:**
1. ALL DIMENSIONS ARE TO FACE OF CURB, INCLUDING POINT TABLE, CURVE TABLE, & QUARTER POINTS.
 2. FOR RAMP DETAILS SEE SHEETS 3-7 TO 3-16.
 3. ALL UTILITY APPURTENANCES WITHIN MICROSEAL AREA SHALL BE ADJUSTED TO GRADE.

- KEYED NOTES:**
- ① BUILD STD. CONCRETE C&G PER COA STD. DWG. 2415A
 - ② BUILD MEDIAN C&G PER COA STD. DWG. 2415B, 2501 & 2502
 - ③ BUILD CONCRETE SIDEWALK PER COA STD. DWG. 2430
 - ④ BUILD ASPHALT TRAIL PER SHEET 1-16
 - ⑤ BUILD CURB RAMP PER NMDOT STD. DWGS. 608-001-1 TO 608-001-8
 - ⑥ HATCHED AREA REPRESENTS NEW ASPHALT
 - ⑦ HATCHED AREA REPRESENTS NEW LANDSCAPE GRAVEL. MATCH EXISTING COLOR & SIZE.
 - ⑧ BUILD CONCRETE VALLEY/ALLEY GUTTER PER COA STD. DWG. 2420 & 2466
 - ⑨ BUILD DEPRESSED CURB & GUTTER PER STD DWG 2415A.



CITY OF ALBUQUERQUE
DEPARTMENT OF MUNICIPAL DEVELOPMENT
ENGINEERING DIVISION

TITLE:
PARADISE BOULEVARD IMPROVEMENTS
ROADWAY GEOMETRICS
STA. 516+00 TO STA. 521+50

Design Review Committee
APPROVED
OCT 02 2018
DESIGN REVIEW COMMITTEE

City Engineer Approval
APPROVED
OCT 02 2018
CITY ENGINEER

City Project No. **648092**

Zone Map No. B-12, C-12 C-13

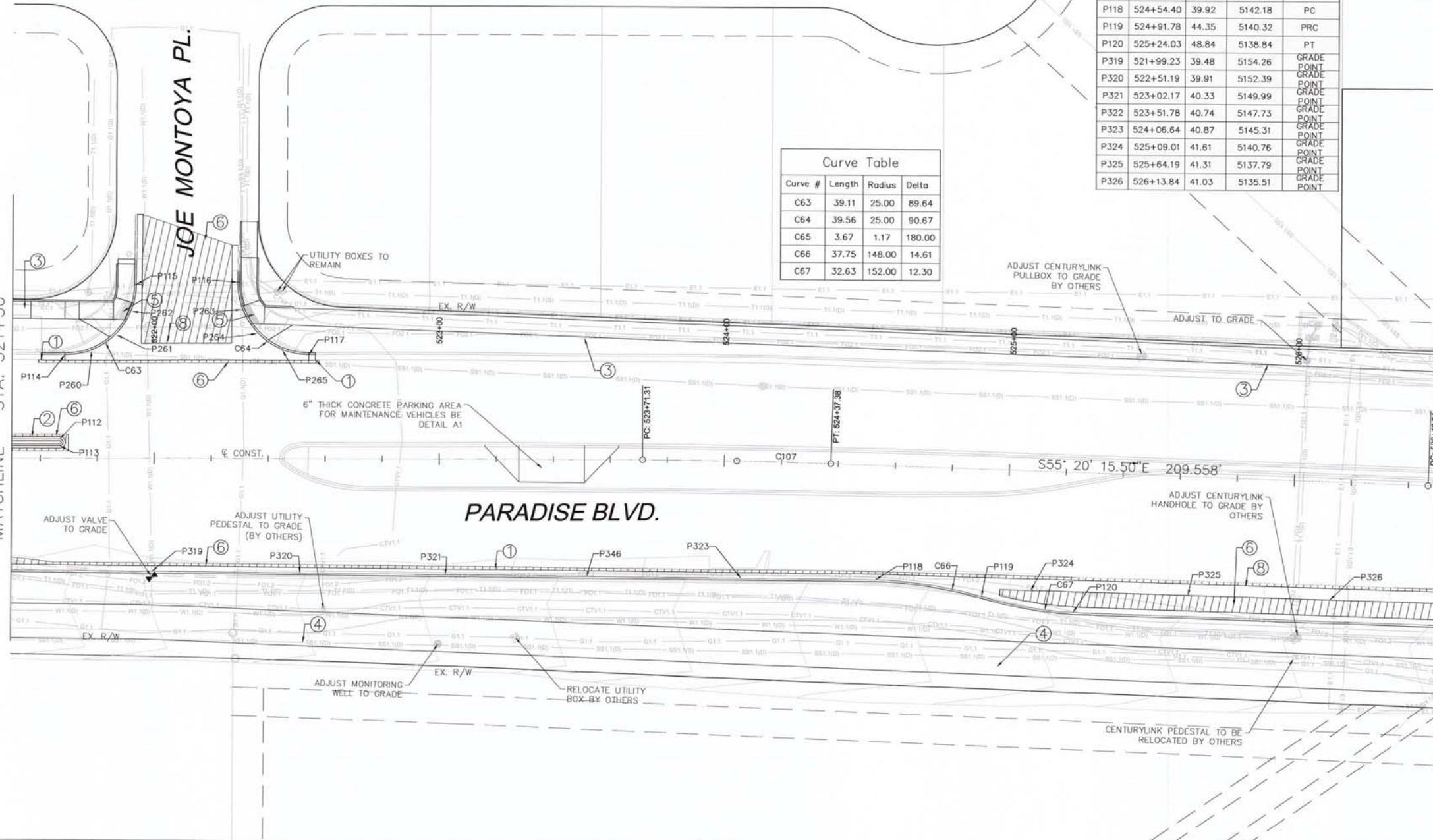
Sheet No. **2-5**

DESIGNED BY: SVL
DRAWN BY: ER
CHECKED BY: JKP

DATE: 02/2017
DATE: 02/2017
DATE: 02/2017

ENGINEER'S SEAL		SURVEY INFORMATION		BENCH MARKS		AS BUILT INFORMATION	
		FIELD NOTES	NO.	CONTRACTOR	DATE	CONTRACTOR	DATE
		BY	DATE	A COA STATION 3 1/4" ALUMINUM DISK STAMPED "7-C12 2003" SET FLUSH WITH TOP OF THE CURB LOCATED AT THE INTERSECTION OF PARADISE BOULEVARD AND DAVENPORT STREET 112 FEET EAST OF THE DAVENPORT STREET CENTERLINE ON THE NORTH CURB.	DATE	A COA STATION 3 1/4" ALUMINUM DISK STAMPED "7-C12 2003" SET FLUSH WITH TOP OF THE CURB LOCATED AT THE INTERSECTION OF PARADISE BOULEVARD AND DAVENPORT STREET 112 FEET EAST OF THE DAVENPORT STREET CENTERLINE ON THE NORTH CURB.	DATE
		REVISIONS	BY	DATE	DATE	REVISIONS	BY
		NO.	DATE	DATE	DATE	NO.	DATE
		DESIGNED BY	DATE	DATE	DATE	DESIGNED BY	DATE
		DRAWN BY	DATE	DATE	DATE	DRAWN BY	DATE
		CHECKED BY	DATE	DATE	DATE	CHECKED BY	DATE

MATCHLINE - STA. 521+50



QUARTER POINTS			
POINT #	STATION	OFFSET	ELEVATION
P260	521+78.11	-38.12 L	5155.10
P261	521+86.22	-43.46 L	5154.69
P262	521+91.70	-51.49 L	5154.56

QUARTER POINTS			
POINT #	STATION	OFFSET	ELEVATION
P263	522+31.07	-52.08 L	5152.77
P264	522+36.47	-43.87 L	5152.44
P265	522+44.62	-38.38 L	5151.80

Curve Table			
Curve #	Length	Radius	Delta
C63	39.11	25.00	89.64
C64	39.56	25.00	90.67
C65	3.67	1.17	180.00
C66	37.75	148.00	14.61
C67	32.63	152.00	12.30

Point Table				
Point	Station	Offset	Elevation	Description
P112	521+66.79	-6.67	MATCH EX.	PC
P113	521+66.79	-4.33	MATCH EX.	PT
P114	521+68.57	-36.28	5155.51	PC
P115	521+93.69	-61.00	5154.74	PT
P116	522+29.25	-61.74	5152.95	PC
P117	522+54.26	-36.45	5151.16	PT
P118	524+54.40	39.92	5142.18	PC
P119	524+91.78	44.35	5140.32	PRC
P120	525+24.03	48.84	5138.84	PT
P319	521+99.23	39.48	5154.26	GRADE POINT
P320	522+51.19	39.91	5152.39	GRADE POINT
P321	523+02.17	40.33	5149.99	GRADE POINT
P322	523+51.78	40.74	5147.73	GRADE POINT
P323	524+06.64	40.87	5145.31	GRADE POINT
P324	525+09.01	41.61	5140.76	GRADE POINT
P325	525+64.19	41.31	5137.79	GRADE POINT
P326	526+13.84	41.03	5135.51	GRADE POINT

MATCHLINE - STA. 526+50

LEGEND

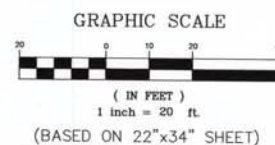
NEW RIGHT OF WAY	TCP	TEXTURED CONCRETE
EX. ROADWAY EASEMENT	NEW ASPHALT	NEW LANDSCAPE GRAVEL (2-3")
ASPHALT REMOVAL AND REPLACEMENT		

NOTES:

1. ALL DIMENSIONS ARE TO FACE OF CURB, INCLUDING POINT TABLE, CURVE TABLE, & QUARTER POINTS.
2. FOR RAMP DETAILS SEE SHEETS 3-7 TO 3-16.
3. ALL UTILITY APPURTENANCES WITHIN MICROSEAL AREA SHALL BE ADJUSTED TO GRADE.

KEYED NOTES:

- ① BUILD STD. CONCRETE C&G PER COA STD. DWG. 2415A
- ② BUILD MEDIAN C&G PER COA STD. DWG. 2415B, 2501 & 2502
- ③ BUILD CONCRETE SIDEWALK PER COA STD. DWG. 2430
- ④ BUILD ASPHALT TRAIL PER SHEET 1-16
- ⑤ BUILD CURB RAMP PER NMDOT STD. DWGS. 608-001-1 TO 608-001-8
- ⑥ HATCHED AREA REPRESENTS NEW ASPHALT
- ⑦ HATCHED AREA REPRESENTS NEW LANDSCAPE GRAVEL. MATCH EXISTING COLOR & SIZE.
- ⑧ BUILD CONCRETE VALLEY/ALLEY GUTTER PER COA STD. DWG. 2420 & 2466
- ⑨ BUILD DEPRESSED CURB & GUTTER PER STD DWG 2415A.



CITY OF ALBUQUERQUE
DEPARTMENT OF MUNICIPAL DEVELOPMENT
ENGINEERING DIVISION

TITLE: PARADISE BOULEVARD IMPROVEMENTS
ROADWAY GEOMETRICS
STA. 521+50 TO STA. 526+50

Design Review Committee
OCT 02 2018
DESIGN REVIEW COMMITTEE

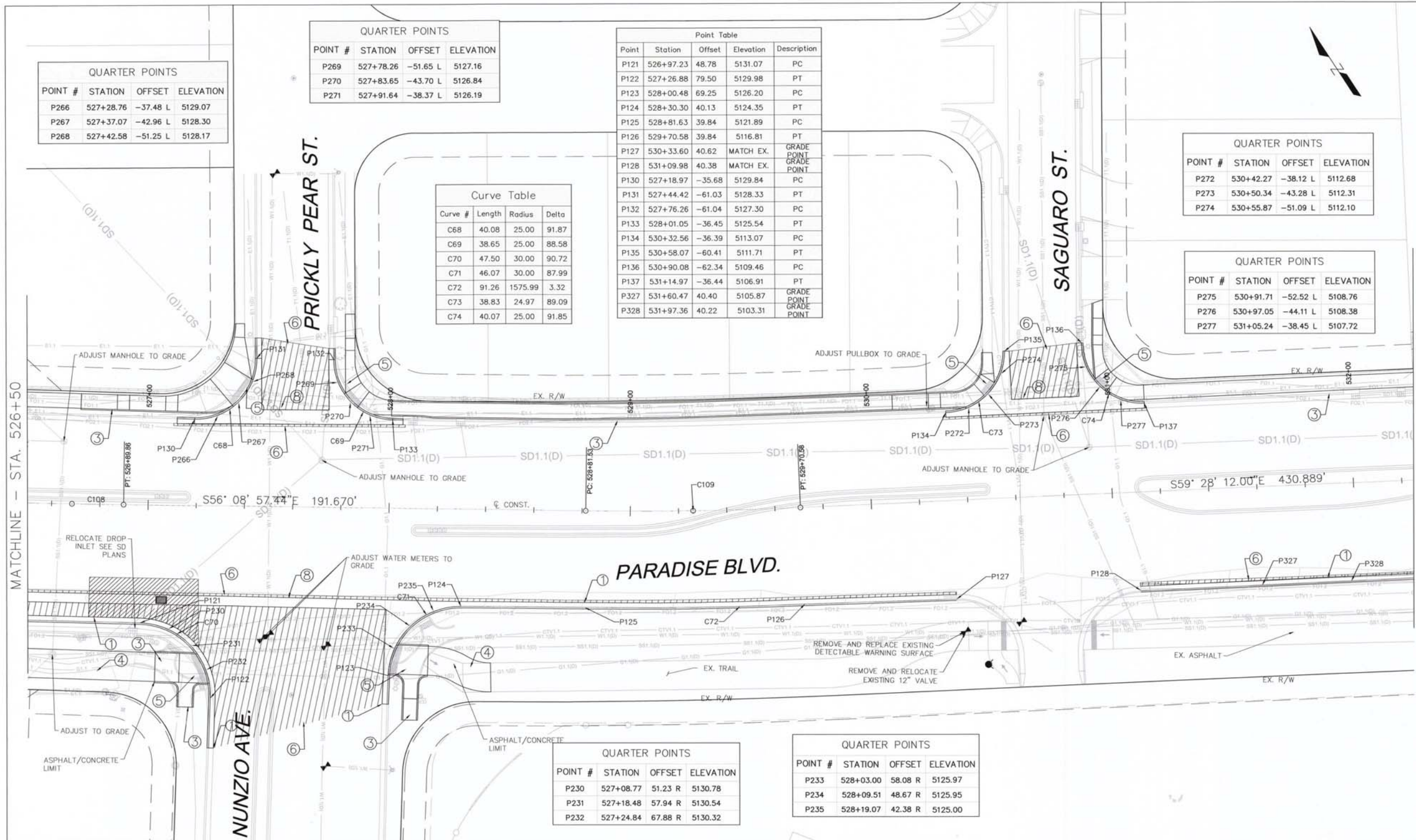
City Engineer Approval
OCT 02 2018
CITY ENGINEER

City Project No. 648092

Zone Map No. B-12, C-12 C-13

Sheet No. 2-6

ENGINEERS SEAL		SURVEY INFORMATION		BENCH MARKS		AS BUILT INFORMATION	
NO.	DATE	NO.	DATE	NO.	DATE	NO.	DATE
REVISIONS	REMARKS	BY	DATE	CONTRACTOR	DATE	CONTRACTOR	DATE
DESIGN	DESIGN	BY	DATE	7-12 2003 SET FLUSH WITH TOP OF THE CURB	DATE	7-12 2003 SET FLUSH WITH TOP OF THE CURB	DATE
SVL	SVL	SVL	02/2017	LOCATED AT THE INTERSECTION OF PARADISE	DATE	LOCATED AT THE INTERSECTION OF PARADISE	DATE
ER	ER	ER	02/2017	BOULEVARD AND DAVENPORT STREET 112 FEET EAST	DATE	BOULEVARD AND DAVENPORT STREET 112 FEET EAST	DATE
JKP	JKP	JKP	02/2017	OF THE DAVENPORT STREET CENTERLINE ON THE	DATE	OF THE DAVENPORT STREET CENTERLINE ON THE	DATE
				NORTH CURB.	DATE	NORTH CURB.	DATE
				DATUM NAD 83 N.M. STATE PLANE CENTRAL	DATE	DATUM NAD 83 N.M. STATE PLANE CENTRAL	DATE
				N=1523573.248 E=1512154.721. ELEV=5175.074	DATE	N=1523573.248 E=1512154.721. ELEV=5175.074	DATE



QUARTER POINTS			
POINT #	STATION	OFFSET	ELEVATION
P266	527+28.76	-37.48 L	5129.07
P267	527+37.07	-42.96 L	5128.30
P268	527+42.58	-51.25 L	5128.17

QUARTER POINTS			
POINT #	STATION	OFFSET	ELEVATION
P269	527+78.26	-51.65 L	5127.16
P270	527+83.65	-43.70 L	5126.84
P271	527+91.64	-38.37 L	5126.19

Curve Table			
Curve #	Length	Radius	Delta
C68	40.08	25.00	91.87
C69	38.65	25.00	88.58
C70	47.50	30.00	90.72
C71	46.07	30.00	87.99
C72	91.26	1575.99	3.32
C73	38.83	24.97	89.09
C74	40.07	25.00	91.85

Point Table				
Point	Station	Offset	Elevation	Description
P121	526+97.23	48.78	5131.07	PC
P122	527+26.88	79.50	5129.98	PT
P123	528+00.48	69.25	5126.20	PC
P124	528+30.30	40.13	5124.35	PT
P125	528+81.63	39.84	5121.89	PC
P126	529+70.58	39.84	5116.81	PT
P127	530+33.60	40.62	MATCH EX.	GRADE POINT
P128	531+09.98	40.38	MATCH EX.	GRADE POINT
P130	527+18.97	-35.68	5129.84	PC
P131	527+44.42	-61.03	5128.33	PT
P132	527+76.26	-61.04	5127.30	PC
P133	528+01.05	-36.45	5125.54	PT
P134	530+32.56	-36.39	5113.07	PC
P135	530+58.07	-60.41	5111.71	PT
P136	530+90.08	-62.34	5109.46	PC
P137	531+14.97	-36.44	5106.91	PT
P327	531+60.47	40.40	5105.87	GRADE POINT
P328	531+97.36	40.22	5103.31	GRADE POINT

QUARTER POINTS			
POINT #	STATION	OFFSET	ELEVATION
P272	530+42.27	-38.12 L	5112.68
P273	530+50.34	-43.28 L	5112.31
P274	530+55.87	-51.09 L	5112.10

QUARTER POINTS			
POINT #	STATION	OFFSET	ELEVATION
P275	530+91.71	-52.52 L	5108.76
P276	530+97.05	-44.11 L	5108.38
P277	531+05.24	-38.45 L	5107.72

QUARTER POINTS			
POINT #	STATION	OFFSET	ELEVATION
P230	527+08.77	51.23 R	5130.78
P231	527+18.48	57.94 R	5130.54
P232	527+24.84	67.88 R	5130.32

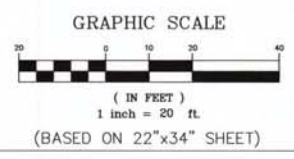
QUARTER POINTS			
POINT #	STATION	OFFSET	ELEVATION
P233	528+03.00	58.08 R	5125.97
P234	528+09.51	48.67 R	5125.95
P235	528+19.07	42.38 R	5125.00

LEGEND

NEW RIGHT OF WAY		TOP		TEXTURED CONCRETE	
EX. ROADWAY EASEMENT		NEW ASPHALT		NEW LANDSCAPE GRAVEL (2-3")	
ASPHALT REMOVAL AND REPLACEMENT					

- NOTES:**
1. ALL DIMENSIONS ARE TO FACE OF CURB, INCLUDING POINT TABLE, CURVE TABLE, & QUARTER POINTS.
 2. FOR RAMP DETAILS SEE SHEETS 3-7 TO 3-16.
 3. ALL UTILITY APPURTENANCES WITHIN MICROSEAL AREA SHALL BE ADJUSTED TO GRADE.

- KEYED NOTES:**
- 1 BUILD STD. CONCRETE C&G PER COA STD. DWG. 2415A
 - 2 BUILD MEDIAN C&G PER COA STD. DWG. 2415B, 2501 & 2502
 - 3 BUILD CONCRETE SIDEWALK PER COA STD. DWG. 2430
 - 4 BUILD ASPHALT TRAIL PER SHEET 1-16
 - 5 BUILD CURB RAMP PER NMDOT STD. DWGS. 608-001-1 TO 608-001-8
 - 6 HATCHED AREA REPRESENTS NEW ASPHALT
 - 7 HATCHED AREA REPRESENTS NEW LANDSCAPE GRAVEL MATCH EXISTING COLOR & SIZE.
 - 8 BUILD CONCRETE VALLEY/ALLEY GUTTER PER COA STD. DWG. 2420 & 2466
 - 9 BUILD DEPRESSED CURB & GUTTER PER STD DWG 2415A.



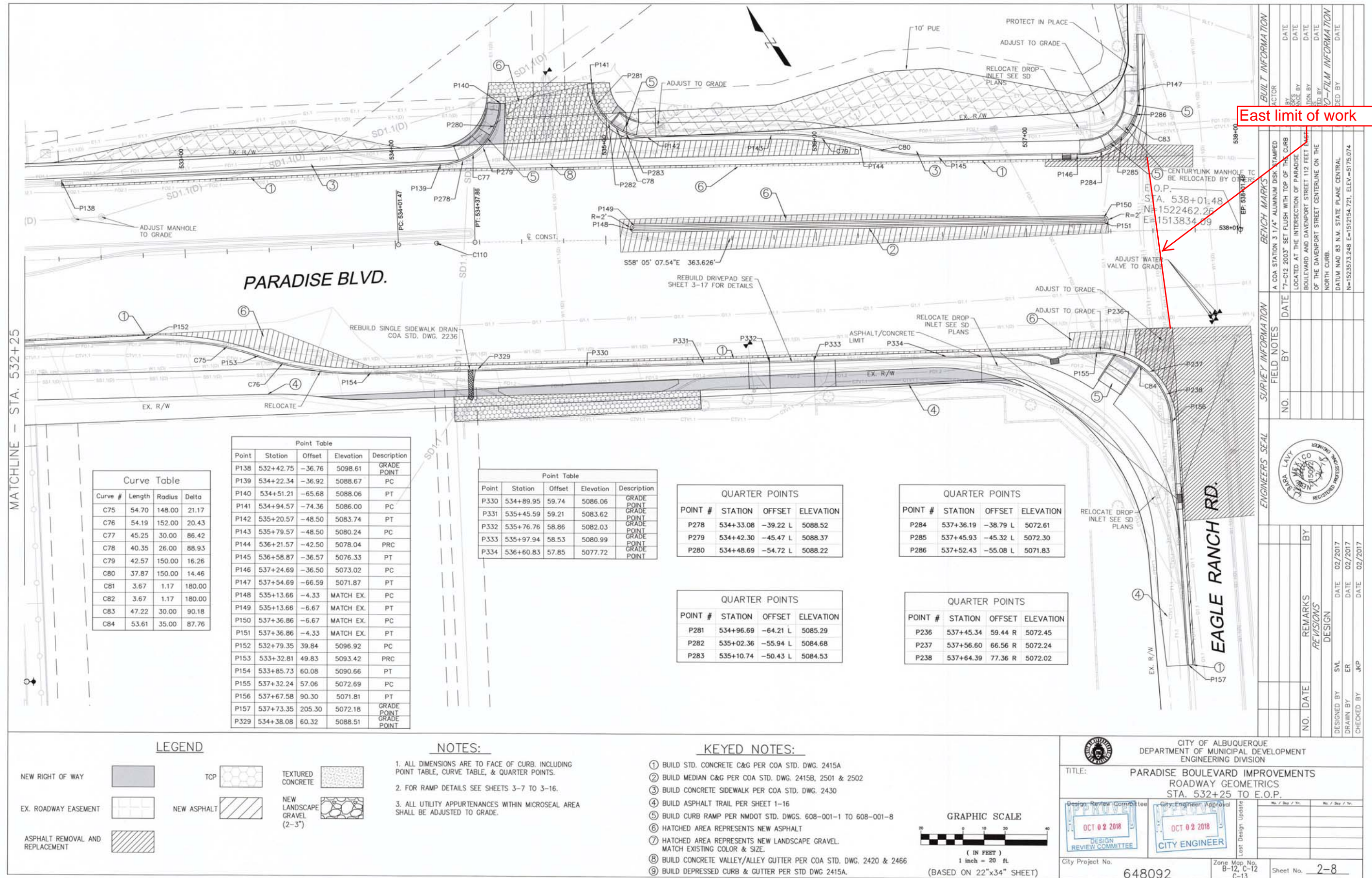
CITY OF ALBUQUERQUE
DEPARTMENT OF MUNICIPAL DEVELOPMENT
ENGINEERING DIVISION

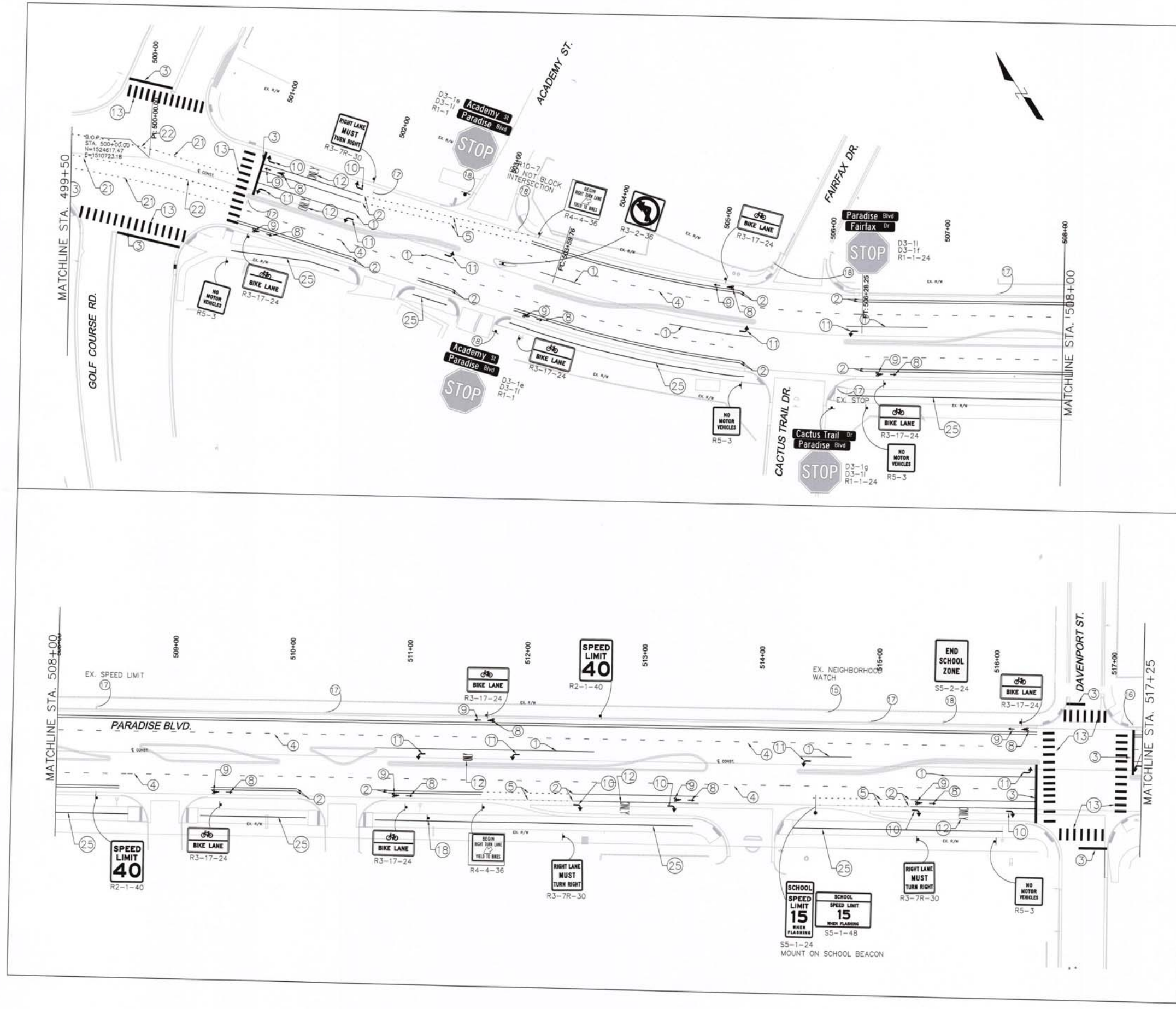
TITLE: PARADISE BOULEVARD IMPROVEMENTS
ROADWAY GEOMETRICS
STA. 526+50 TO STA. 532+25

Design Review Committee:
City Engineer Approval:

City Project No. 648092
Zone Map No. B-12, C-12
C-13
Sheet No. 2-7

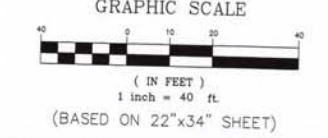
AS BUILT INFORMATION		BENCH MARKS		SURVEY INFORMATION		ENGINEERS SEAL		REVISIONS		REMARKS	
CONTRACTOR	DATE	A COA STATION 3 1/4" ALUMINUM DISK STAMPED	DATE	FIELD NOTES	NO.	NO.	DATE	NO.	DATE	NO.	DATE
BY	DATE	7-C12 2003" SET FLUSH WITH TOP OF THE CURB	DATE								
BY	DATE	LOCATED AT THE INTERSECTION OF PARADISE	DATE								
BY	DATE	BOULEVARD AND DAVENPORT STREET 112 FEET EAST	DATE								
BY	DATE	OF THE DAVENPORT STREET CENTERLINE ON THE	DATE								
BY	DATE	NORTH CURB.	DATE								
BY	DATE	DATUM NAD 83 N.M. STATE PLANE CENTRAL	DATE								
BY	DATE	N=1523573.248 E=1512154.721, ELEV=5175.074	DATE								





- NOTES:**
1. PAINT ALL MEDIAN NOSES YELLOW 5' PAST PT AND PC.
 2. ALL CONFLICTING PLASTIC STRIPING SHALL BE ERADICATED BY WATER BLASTING OF THE ROADWAY TO A MAX. DEPTH OF 0.25 INCHES AND A WIDTH TO EQUAL TWO TIMES THE WIDTH OF THE STRIPE OR MARKING TO BE REMOVED. REFER TO SPEC SECTION 443.
 3. ALL EXISTING SIGNS WITHIN PROJECT AREA TO BE REMOVED AND SALVAGED UNLESS NOTED OTHERWISE.
 4. SEE SHEET 5-1 AND 5-4 FOR STREET NAME SIGN DETAILS.
 5. SEE SHEETS 5-5 THRU 5-7 FOR STRIPING DETAILS.
 6. ALL STRIPING TO BE THERMOPLASTIC.
 7. CONTRACTOR SHALL ADJUST SIGN LETTERING AS NECESSARY TO MAKE SURE LETTER TAILS ARE NOT CUT OFF.

- KEYED NOTES:**
- 1 4" SOLID WHITE STRIPE
 - 2 6" SOLID WHITE STRIPE
 - 3 24" SOLID WHITE STRIPE
 - 4 4" DASHED WHITE STRIPE (10' STRIPE, 30' GAP)
 - 5 6" DASHED WHITE STRIPE (2' STRIPE, 6' GAP)
 - 6 4" SOLID YELLOW STRIPE
 - 7 12" SOLID WHITE STRIPE
 - 8 BICYCLE SYMBOL
 - 9 BIKE THRU ARROW
 - 10 RIGHT TURN ARROW
 - 11 LEFT TURN ARROW
 - 12 WORD "ONLY"
 - 13 CROSSWALK STRIPING, (CONTINENTAL WITH NO TRANSVERSE STRIPES) 24" SOLID WHITE STRIPE PER COA STD DWG 2900-106
 - 14 8" SOLID WHITE CHEVRONS @30', 20' O.C. PER COA STD DWG 2099-107
 - 15 EXISTING SIGN TO REMAIN
 - 16 RELOCATE EXISTING SIGN AT SAME STATION, OUTSIDE OF NEW PAVEMENT PER COA STD DWG 2900-701
 - 17 EXISTING SIGN - REMOVE & SALVAGE
 - 18 EXISTING SIGN - REMOVE & REPLACE
 - 19 NOT USED
 - 20 NOT USED
 - 21 4" DOTTED WHITE STRIPE (2' STRIPE, 4' GAP)
 - 22 4" DOTTED YELLOW STRIPE (2' STRIPE, 4' GAP)
 - 23 4" DOUBLE YELLOW STRIPE
 - 24 4" DASHED YELLOW STRIPE (10' STRIPE, 30' GAP)
 - 25 4" DASHED YELLOW STRIPE (3' STRIPE, 9' GAP)

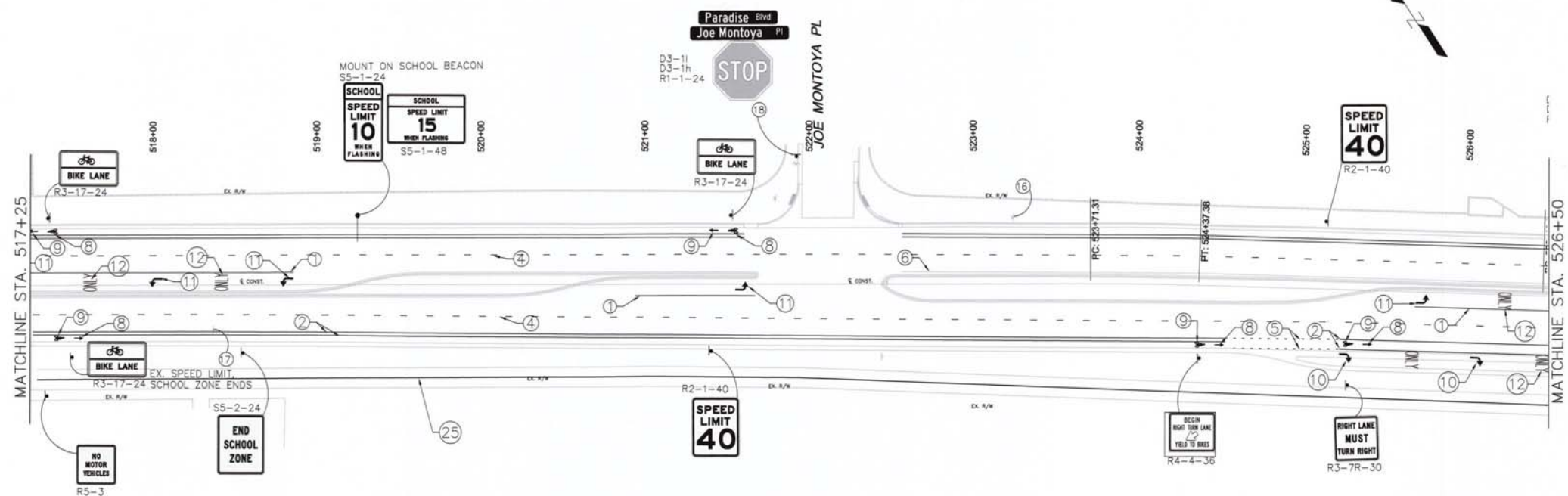


CITY OF ALBUQUERQUE
DEPARTMENT OF MUNICIPAL DEVELOPMENT
ENGINEERING DIVISION

TITLE: **PARADISE BOULEVARD IMPROVEMENTS
SIGNING & STRIPING
499+50 TO STA. 517+25**

DESIGNED BY S.V.L.	DATE 02/2017	REVISIONS	NO.	DATE
DRAWN BY B.N.	DATE 02/2017	DESIGN		
CHECKED BY J.K.P.	DATE 02/2017			

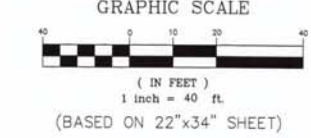
City Project No. **648092** Zone Map No. **B-12, C-12, C-13** Sheet No. **5-2**



- NOTES:**
1. PAINT ALL MEDIAN NOSES YELLOW 5' PAST PT AND PC.
 2. ALL CONFLICTING PLASTIC STRIPING SHALL BE ERADICATED BY WATER BLASTING OF THE ROADWAY TO A MAX. DEPTH OF 0.25 INCHES AND A WIDTH TO EQUAL TWO TIMES THE WIDTH OF THE STRIPE OR MARKING TO BE REMOVED. REFER TO SPEC SECTION 443.
 3. ALL EXISTING SIGNS WITHIN PROJECT AREA TO BE REMOVED AND SALVAGED UNLESS NOTED OTHERWISE.
 4. SEE SHEET 5-1 AND 5-4 FOR STREET NAME SIGN DETAILS.
 5. SEE SHEETS 5-5 THRU 5-7 FOR STRIPING DETAILS.
 6. ALL STRIPING TO BE THERMOPLASTIC.
 7. CONTRACTOR SHALL ADJUST SIGN LETTERING AS NECESSARY TO MAKE SURE LETTER TAILS ARE NOT CUT OFF.

KEYED NOTES:

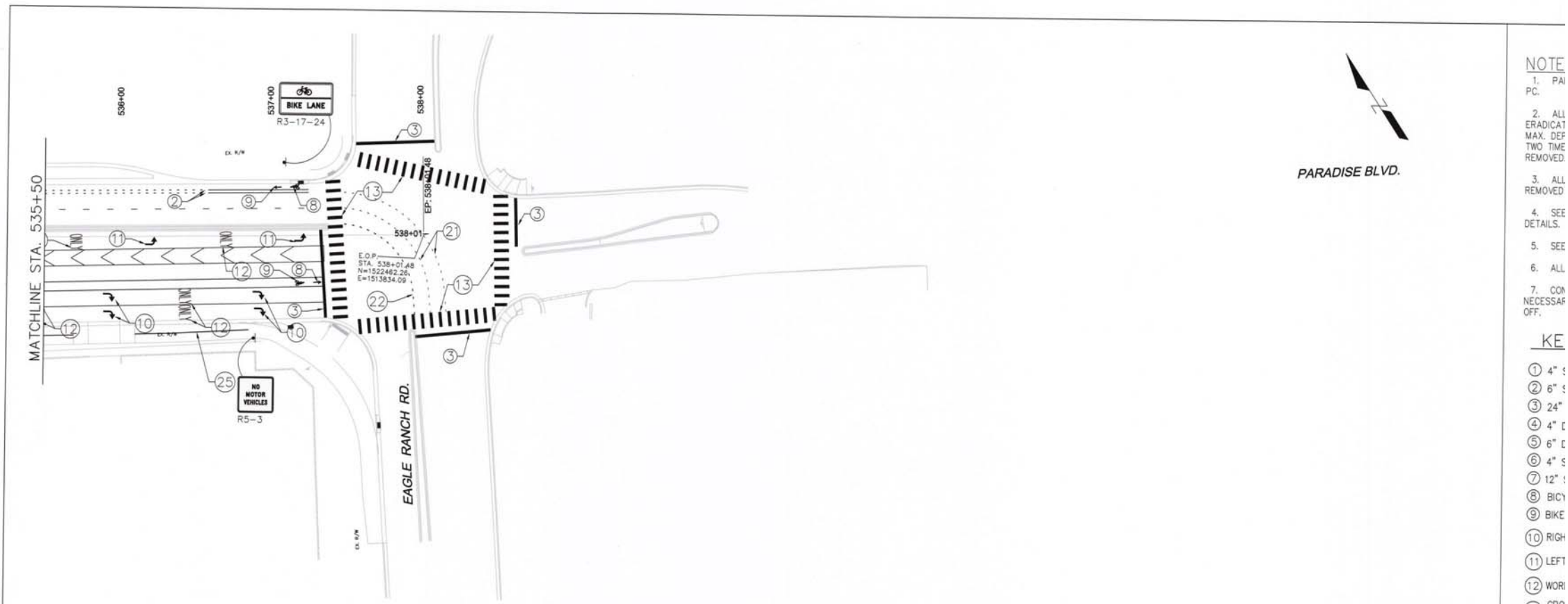
- 1 4" SOLID WHITE STRIPE
- 2 6" SOLID WHITE STRIPE
- 3 24" SOLID WHITE STRIPE
- 4 4" DASHED WHITE STRIPE (10' STRIPE, 30' GAP)
- 5 6" DASHED WHITE STRIPE (2' STRIPE, 6' GAP)
- 6 4" SOLID YELLOW STRIPE
- 7 12" SOLID WHITE STRIPE
- 8 BICYCLE SYMBOL
- 9 BIKE THRU ARROW
- 10 RIGHT TURN ARROW
- 11 LEFT TURN ARROW
- 12 WORD "ONLY"
- 13 CROSSWALK STRIPING, (CONTINENTAL WITH NO TRANSVERSE STRIPES) 24" SOLID WHITE STRIPE PER COA STD DWG 2900-106
- 14 8" SOLID WHITE CHEVRONS @30', 20' O.C. PER COA STD DWG 2099-107
- 15 EXISTING SIGN TO REMAIN
- 16 RELOCATE EXISTING SIGN AT SAME STATION, OUTSIDE OF NEW PAVEMENT PER COA STD DWG 2900-701
- 17 EXISTING SIGN - REMOVE & SALVAGE
- 18 EXISTING SIGN - REMOVE & REPLACE
- 19 NOT USED
- 20 NOT USED
- 21 4" DOTTED WHITE STRIPE (2' STRIPE, 4' GAP)
- 22 4" DOTTED YELLOW STRIPE (2' STRIPE, 4' GAP)
- 23 4" DOUBLE YELLOW STRIPE
- 24 4" DASHED YELLOW STRIPE (10' STRIPE, 30' GAP)
- 25 4" DASHED YELLOW STRIPE (3' STRIPE, 9' GAP)



		CITY OF ALBUQUERQUE DEPARTMENT OF MUNICIPAL DEVELOPMENT ENGINEERING DIVISION										
TITLE: PARADISE BOULEVARD IMPROVEMENTS SIGNING & STRIPING STA. 517+25 TO STA. 535+50												
Design Review Committee 	City Engineer Approval 	No. / Day / Yr. _____	No. / Day / Yr. _____									
City Project No. 648092	Zone Map No. B-12, C-12 C-13	Sheet No. 5-3	REVISIONS <table border="1"> <thead> <tr> <th>NO.</th> <th>DATE</th> <th>REVISIONS</th> </tr> </thead> <tbody> <tr> <td> </td> <td> </td> <td> </td> </tr> <tr> <td> </td> <td> </td> <td> </td> </tr> </tbody> </table>	NO.	DATE	REVISIONS						
NO.	DATE	REVISIONS										

BENCH MARKS		SURVEY INFORMATION	
CONTRACTOR	DATE	NO.	BY
INSPECTOR'S	DATE		
FIELD CLERK	DATE		
REVISION BY	DATE		
CORRECTED BY	DATE		
AS BUILT INFORMATION		FIELD NOTES	
A COA STATION 3 1/4" ALUMINUM DISK STAMPED		NO.	
7"-C12 2003" SET FLUSH WITH TOP OF THE CURB		BY	
LOCATED AT THE INTERSECTION OF PARADISE			
BOULEVARD AND DAVENPORT STREET 112 FEET EAST			
OF THE DAVENPORT STREET CENTERLINE ON THE			
NORTH CURB.			
DATUM NAD 83 N.M. STATE PLANE CENTRAL			
N=1523573.248 E=1512154.721, ELEV.=5175.074			





- NOTE**
1. PAI
 2. ALL ERADICAT MAX. DEF TWO TIME REMOVED.
 3. ALL REMOVED
 4. SEE DETAILS.
 5. SEE
 6. ALL
 7. COM NECESSAR OFF.

- KE**
- ① 4" S
 - ② 6" S
 - ③ 24"
 - ④ 4" S
 - ⑤ 6" S
 - ⑥ 4" S
 - ⑦ 12" S
 - ⑧ BICY
 - ⑨ BIKE
 - ⑩ RIGH
 - ⑪ LEFT
 - ⑫ WOR
 - ⑬ CRO TRAI PER
 - ⑭ 8" S COA
 - ⑮ EXIS
 - ⑯ REL OUT 290'
 - ⑰ EXIST
 - ⑱ EXIST
 - ⑲ NOT
 - ⑳ NOT
 - ㉑ 4" D
 - ㉒ 4" D
 - ㉓ 4" D
 - ㉔ 4" D
 - ㉕ 4" D

3'-6"

0'-8" 0.2' 6" C 1.5" 4" C 2.5"

Academy St

2.4" 37.2" 2.4"

D3-1e
W/G
42" X 8"

3'-6"

0'-8" 0.1' 6" C 1.4" C 3"

Fairfax Dr

4.85" 32.3" 4.85"

D3-1f
W/G
42" X 8"

4'-6"

0'-8" 0.7' 6" C 1.3" 0.9' 4" C 3.1"

Cactus Trail Dr

3.4" 47.5" 3.1"

D3-1g
W/G
54" X 8"

5'-0"

0'-8" 0.4' 6" C 1.1' 4" C 2.9"

Joe Montoya Pl

3.9" 52.2" 3.9"

D3-1h
W/G
60" X 8"

4'-6"

0'-8" 0.5' 6" C 1.5" 0.9' 4" C 3.1"

Prickly Pear St

2.5" 48.7" 2.9"

D3-1i
W/G
54" X 8"

3'-6"

0'-8" 0.1' 6" C 1.4" C 3"

Nunzio Ave

4.8" 32.4" 4.8"

D3-1j
W/G
36" X 8"

3'-6"

0'-8" 0.5' 6" C 1.2' 4" C 2.8"

Saguaro St

3.2" 36.3" 2.5"

D3-1k
W/G
42" X 8"

4'-0"

0'-8" 0.9' 6" C 1.1" 1.5" 4" C 2.5"

Paradise Blvd

4.3" 39.4" 4.3"

D3-1l
W/G
48" X 8"