



Header Curb

14' Lane Width

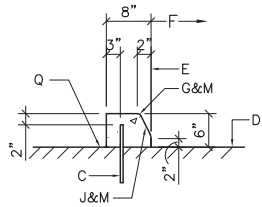
pe Trail NW

Juanita Ln NW

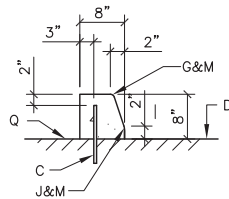
Google Earth

© 2018 Google

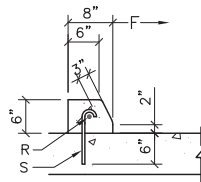




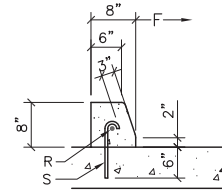
TYPE I  
PINNED CURB



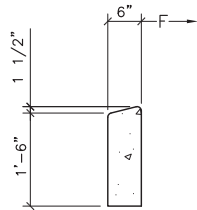
TYPE II  
PINNED CURB



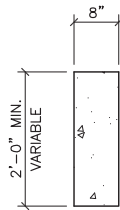
PINNED CURB TYPE III  
MEDIAN PAVEMENT



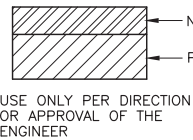
PINNED CURB TYPE IV  
OUTSIDE PAVEMENT



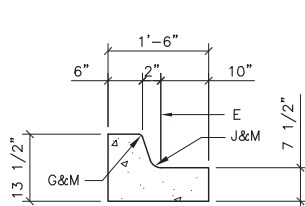
HEADER CURB



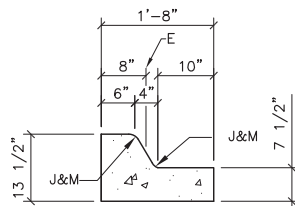
CUT-OFF WALL



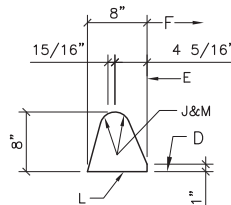
TEMPORARY OR BICYCLE  
PATH SECTION



MEDIAN C & G



MOUNTABLE  
MEDIAN CURB



TEMPORARY ASPHALT CURB,  
TYPE C RESIDENTIAL

### CONSTRUCTION NOTES

- A. REQ. CONC. CHANNEL LINING, OR CUT-OFF WALL, PROVIDE 1/4" EXP JOINT BETWEEN BACK OF CURB & CHANNEL LINING AND/OR WALL.
- B. VARIABLE, DEPRESS AS NEEDED.
- C. DRIVE NO. 4 PINS 18" DEEP IN HOLES DRILLED @ 2" O.C. IN EXISTING PAVEMENT, SEAL WITH EPOXY.
- D. EXISTING ASPHALT CONCRETE (AC) OR PORTLAND CEMENT CONCRETE (PCC) PAVEMENT.
- E. THEORETICAL FACE OF CURB OR FLOWLINE.
- F. TRAFFIC SIDE.
- G. 3/4" RADIUS.
- H. 1-1/2" RADIUS.
- J. 2" RADIUS.
- K. 24" RADIUS.
- L. TACK COAT.
- M. DIMENSIONS AT ROUNDED CORNERS MEASURED TO INTERSECTION OF STRAIGHT LINES.
- N. 4" AC: MAJOR LOCAL OR BETTER (SP-III)  
3" AC: LOCAL RESIDENTIAL STREET (TYPE C)  
2" AC: BICYCLE PATH (TYPE B, RESIDENTIAL)
- P. 8" SCARIFIED AND COMPACTED SUBGRADE. 95% MINIMUM COMPACTION PER SECTION 301.
- Q. AC PAVEMENT.
- R. #4 CONT. BETWEEN JOINTS 3" COVER AT JOINTS.
- S. #3 PINS @ 3'-0" O.C. W/STD. HOOK.

### GENERAL NOTES

SEE COA DRAWING 2415A

REVISIONS	CITY OF ALBUQUERQUE
9/91 11/14/91 12/15/92 3/30/94	PAVING CURB AND GUTTER & TEMPORARY PAVING SECTION DWG. 2415B JANUARY 2003