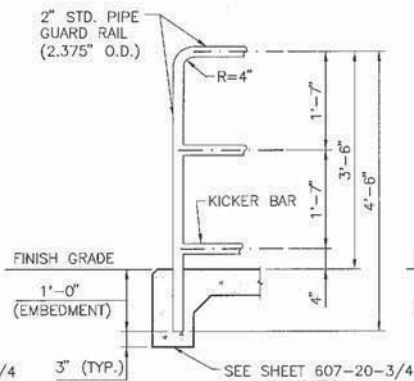
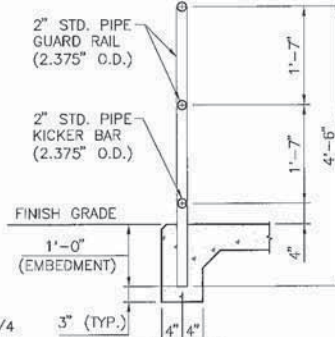


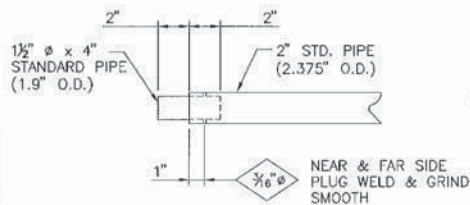
DETAIL @ RAIL END  
TYPE A



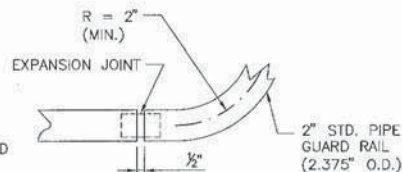
DETAIL @ RAIL END  
TYPE B



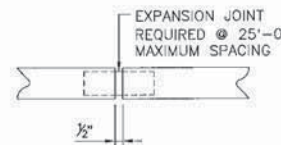
TYPICAL SECTION  
THRU RAIL



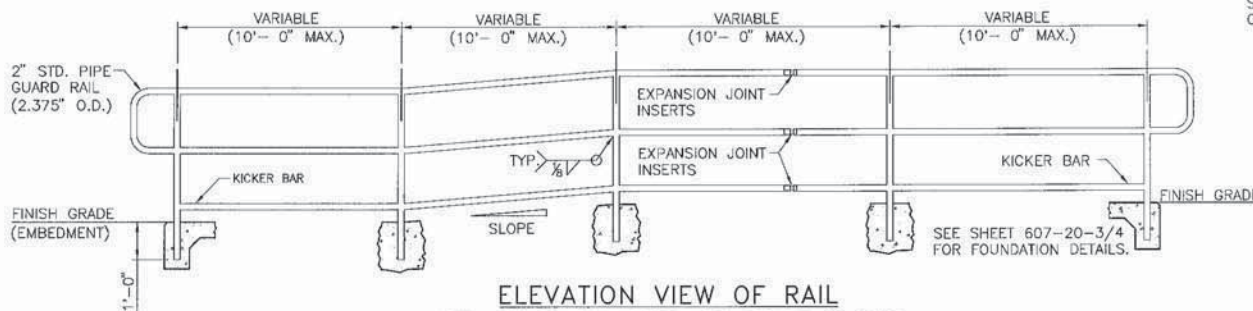
DETAIL @ EXPANSION  
JOINT INSERTS



DETAIL OF RAIL TRANSITION  
AT HORIZONTAL CURVE  
(PLAN VIEW SHOWN)



DETAIL @ EXP. JOINT



ELEVATION VIEW OF RAIL

NOTE: POSTS TO REMAIN VERTICAL, RAIL PARALLEL TO GRADE.

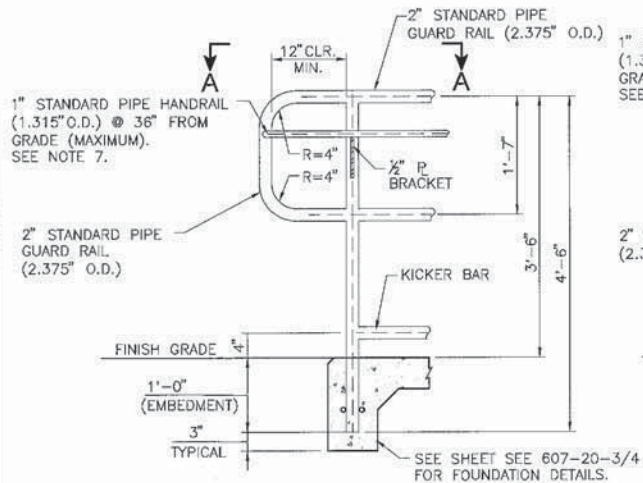
### GENERAL NOTES:

- DESIGN AND CONSTRUCTION SHALL CONFORM TO THE NEW MEXICO STATE DEPARTMENT OF TRANSPORTATION'S STANDARD SPECIFICATIONS FOR HIGHWAY AND BRIDGE CONSTRUCTION, CURRENT EDITION AND SUPPLEMENTAL SPECIFICATIONS AND SPECIAL PROVISIONS.
- STEEL STRUCTURES SHALL CONFORM TO SECTION 541 - STEEL STRUCTURES OF THE STANDARD SPECIFICATIONS AND AASHTO M 270, GRADE 50. TUBING SHALL CONFORM TO ASTM A 500, GRADE B.
- BOLTS, NUTS, AND WASHERS SHALL BE GALVANIZED TO MEET THE REQUIREMENTS OF AASHTO M 111 OR AASHTO M 298.
- WELDING SHALL MEET THE REQUIREMENTS OF ANSI/AWS D 1.1 STRUCTURAL WELDING CODE, AND SECTION 541 OF THE STANDARD SPECIFICATIONS. ALL WELDS SHALL BE GROUND SO AS TO REMOVE ALL BURS OR PROTUBERANCES WHICH COULD TRAP FOREIGN MATERIALS OR CAUSE HARM TO A PEDESTRIAN.
- THE FABRICATOR SHALL FURNISH TO THE BRIDGE ENGINEER SIX COPIES OF MILL TEST REPORTS OF ALL STRUCTURAL STEEL ITEMS, WELDING ELECTRODES, AND FLUX COMBINATIONS IN CONFORMANCE WITH SUBSECTION 541.3.2.1 OF THE STANDARD SPECIFICATIONS.
- UNLESS OTHERWISE NOTED IN THE CONTRACT, THE PROJECT MANAGER SHALL SELECT EITHER TYPE A OR TYPE B RAILING ENDS, AND SCHEME 1 OR SCHEME 2 FOR FOUNDATIONS.
- 1" STANDARD PIPE HANDRAIL SHALL BE USED FOR GRADES EQUAL TO OR EXCEEDING 5%. 1" STANDARD PIPE HANDRAIL SHALL BE USED FOR GRADES LESS THAN 5%, WHEN SPECIFIED IN THE PLANS.
- POSTS SHALL BE VERTICAL. ALL RAILS SHALL BE PARALLEL TO EACH OTHER AND TO GRADE.
- BREAKS IN VERTICAL ALIGNMENTS SHALL BE AT THE CENTER LINES OF THE VERTICAL POSTS.
- CONCRETE SHALL BE CLASS "AA" AND SHALL BE INCLUDED IN THE BID PRICE FOR SIDEWALKS. IN INSTANCES WHERE THERE ARE NO SIDEWALKS, THE BID PRICE OF THE PEDESTRIAN RAILING INCLUDES THE COST OF CONCRETE TO SUPPORT THE POSTS.
- RAIL POSTS SHALL BE CAST-IN-PLACE, OR SET IN OVERSIZED HOLES (3" IN DIAMETER) AND GROUTED AS OUTLINED IN SECTION 522 OR 523 OF THE STANDARDS SPECIFICATIONS.
- AFTER GROUTING, THE CONTRACTOR SHALL SEAL THE JOINTS BETWEEN THE RAIL POSTS AND THE CONCRETE WITH SILICONE SEALANT APPROVED BY THE PROJECT MANAGER.
- PAINTING AND/OR POWDER COATING OF STRUCTURAL STEEL SHALL CONFORM TO SECTION 545 OR SPECIAL PROVISIONS OF THE STANDARD SPECIFICATIONS. COLOR SHALL BE VERIFIED BY PROJECT MANAGER. REINFORCING BARS SHALL BE EPOXY COATED CONFORMING TO SECTION 540.

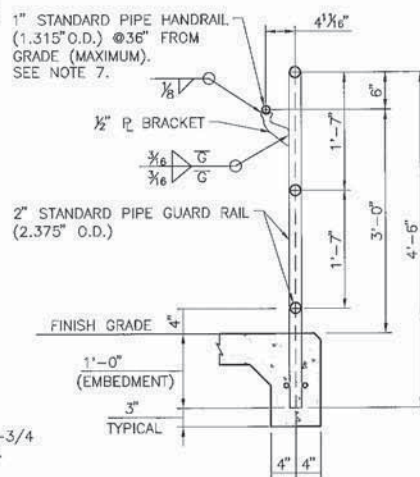


DATE	BY	DESCRIPTION
REVISIONS (OR CHANGE NOTICES)		
NEW MEXICO DEPARTMENT OF TRANSPORTATION STANDARD DRAWING		
PEDESTRIAN RAILING WITHOUT HANDRAIL		
DESIGNED BY: TM	DRAWN BY: SKL	CHECKED BY: YML/TM
607-20-1/4		
1 of 4		

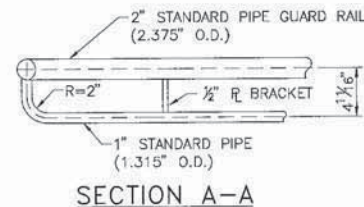




DETAIL @ RAIL END-TYPE A



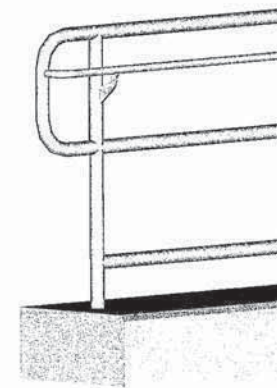
SECTION THRU RAIL



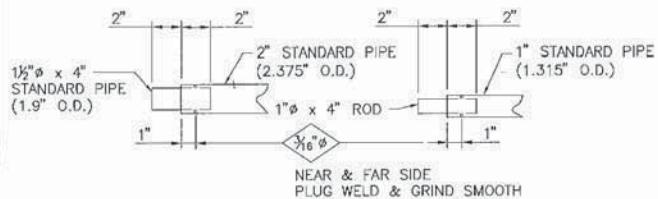
SECTION A-A

DETAIL @ RAIL BRACKET

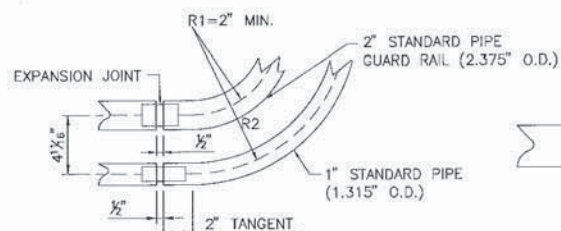
1/2" PLATE BRACKET. REFER TO SHEET SEE 607-20-4/4 FOR FULL SCALE TEMPLATE.



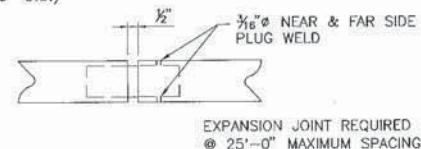
ISOMETRIC OF METAL RAILING END DETAIL



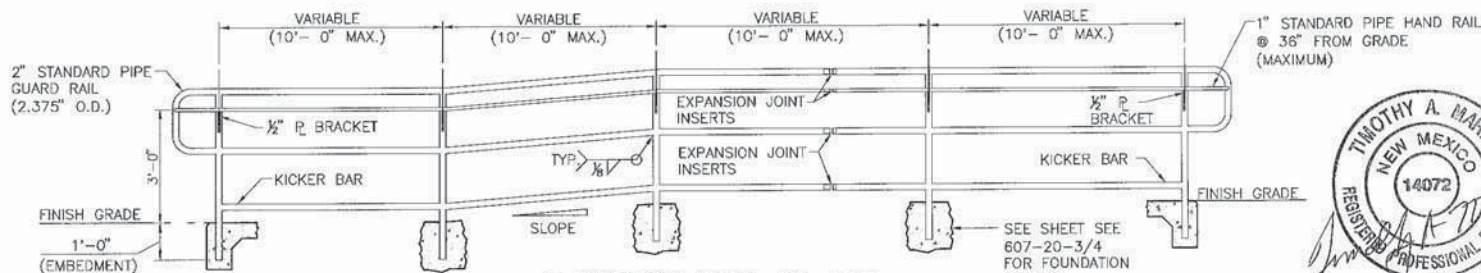
DETAIL @ EXPANSION JOINT INSERTS



DETAIL OF RAIL TRANSITION AT HORIZONTAL CURVE (PLAN VIEW SHOWN)



DETAIL @ EXPANSION JOINT

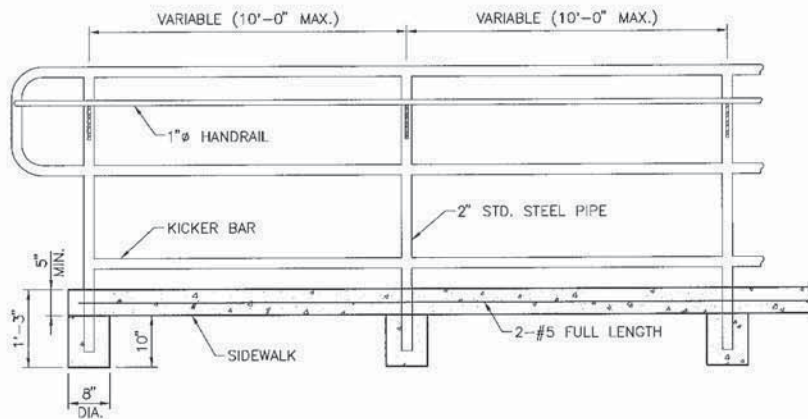


ELEVATION VIEW OF RAIL

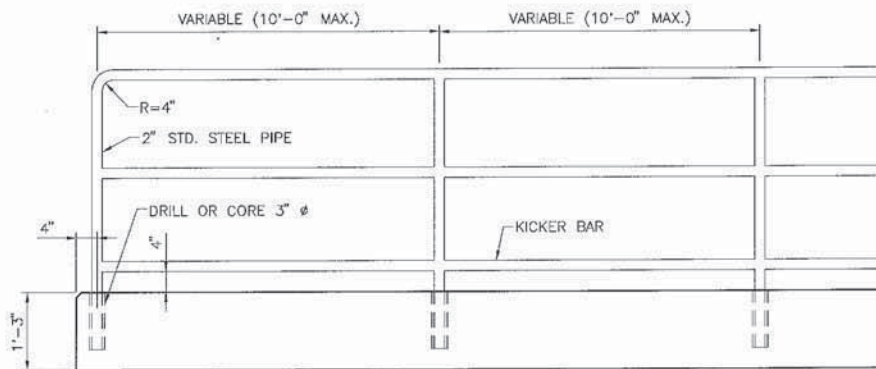
NOTE: POSTS TO REMAIN VERTICAL, RAIL PARALLEL TO GRADE.



DATE	BY	DESCRIPTION
REVISIONS (OR CHANGE NOTICES)		
NEW MEXICO		
DEPARTMENT OF TRANSPORTATION		
STANDARD DRAWING		
PEDESTRIAN RAILING WITH HANDRAIL		
DESIGNED BY: TM	DRAWN BY: SKL	CHECKED BY: YML/TM
607-20-2/4		2 of 4

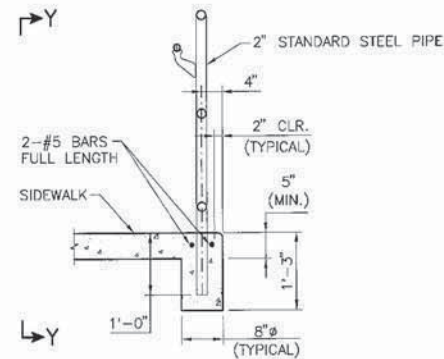


SCHEME # 2  
(VIEW Y-Y)

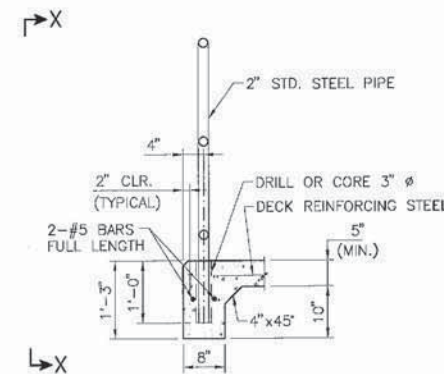


SCHEME # 1  
(VIEW X-X)

NOTE: HANDRAILING OMITTED FROM VIEW. REFER TO  
GENERAL NOTE 7 ON DRAWING 607-20-1/4  
WHEN HANDRAILING IS REQUIRED.



FOUNDATION SCHEME # 2  
(FOR EDGE OF SIDEWALK INSTALLATION)



FOUNDATION SCHEME # 1  
(FOR BRIDGE DECK OR EDGE OF SIDEWALK INSTALLATION)



DATE	BY	DESCRIPTION
REVISIONS (OR CHANGE NOTICES)		
NEW MEXICO		
DEPARTMENT OF TRANSPORTATION		
STANDARD DRAWING		
PEDESTRIAN RAILING		
FOUNDATION DETAILS		
DESIGNED BY: TM	DRAWN BY: SKL	CHECKED BY: YML/TM
607-20-3/4		3 of 4