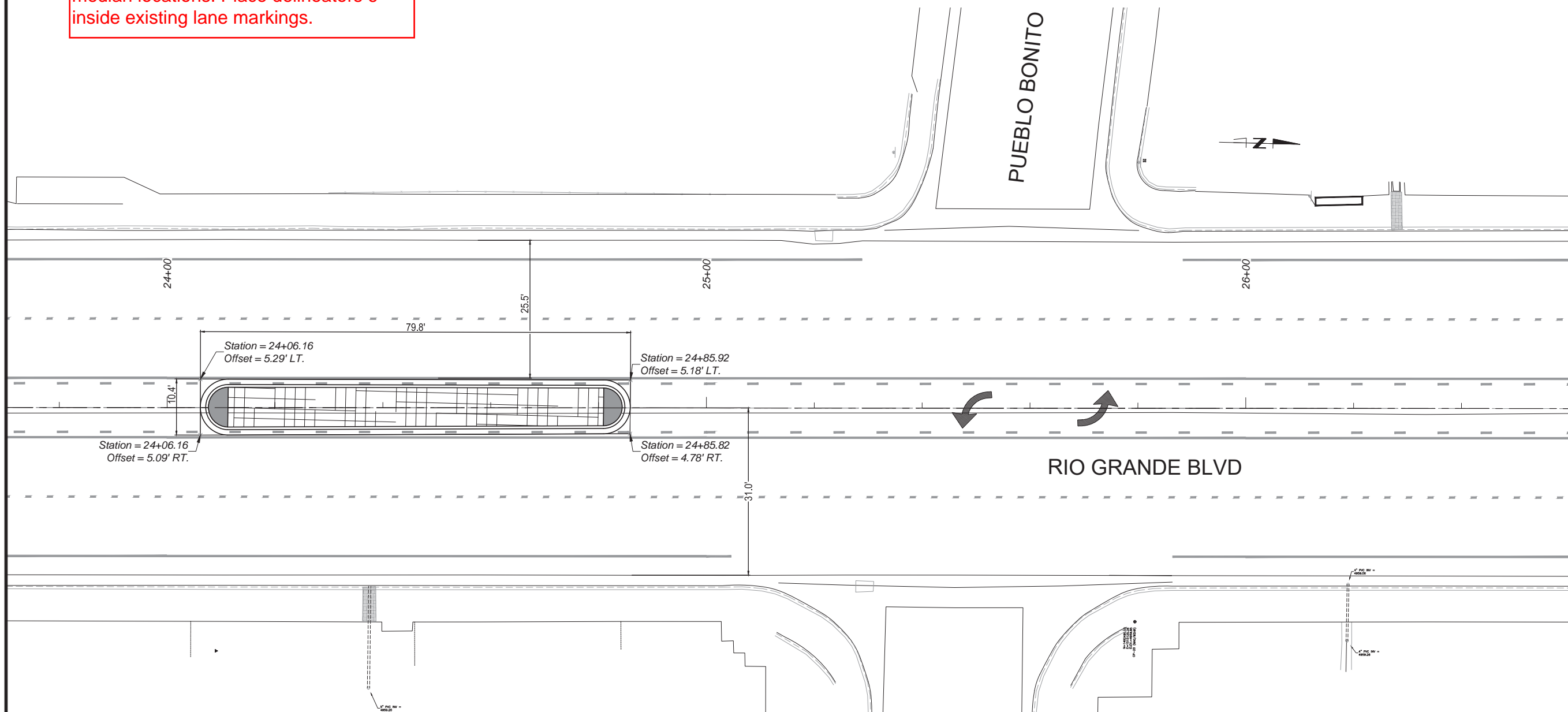
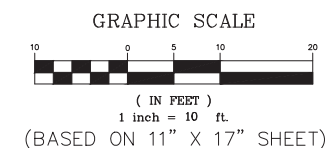


Install vertical delineators @ 20' spacing (5' spacing on radius) at proposed median locations. Place delineators 6" inside existing lane markings.



MEDIAN DETAIL
RIO GRANDE BLVD SOUTH OF PUEBLO BONITO CT



CALL NM ONE-CALL
SYSTEM SEVEN (7) DAYS
PRIOR TO ANY EXCAVATION



CITY OF ALBUQUERQUE
DEPARTMENT OF MUNICIPAL DEVELOPMENT
ENGINEERING DIVISION

RIO GRANDE BOULEVARD IMPROVEMENTS
CENTRAL AVENUE TO INTERSTATE 40

MEDIAN DIMENSION EXHIBIT

DESIGN REVIEW COMMITTEE	CITY ENGINEER APPROVAL	ZONE MAP NO. C-19 & C-20
		CITY PROJECT NO. 753604
		SHEET NO. 1 OF 2

CONSULTANTS

Parametrix

ENVIRONMENTAL SCIENCE: ENVIRONMENTAL SCIENCE

BENCH MARKS	TO REACH THE STATION FROM THE INTERSECTION OF BROADWAY BOULEVARD AND CENTRAL AVENUE, TRAVEL NORTH 0.45 MILES ON BROADWAY AVENUE TO LOMAS AVENUE, TURN LEFT ONTO LOMAS AND GO WEST 0.7 MILES TO 18TH STREET AND THE STATION IN THE MEDIAN ON THE WEST SIDE OF THE INTERSECTION. THE STATION MARK IS A CITY OF ALBUQUERQUE SURVEY CONTROL. 3 1/4 INCH ALUMINUM DISC STAMPED "17-114 1983" SET FLUSH WITH THE TOP OF THE CONCRETE.
-------------	---

SEAL

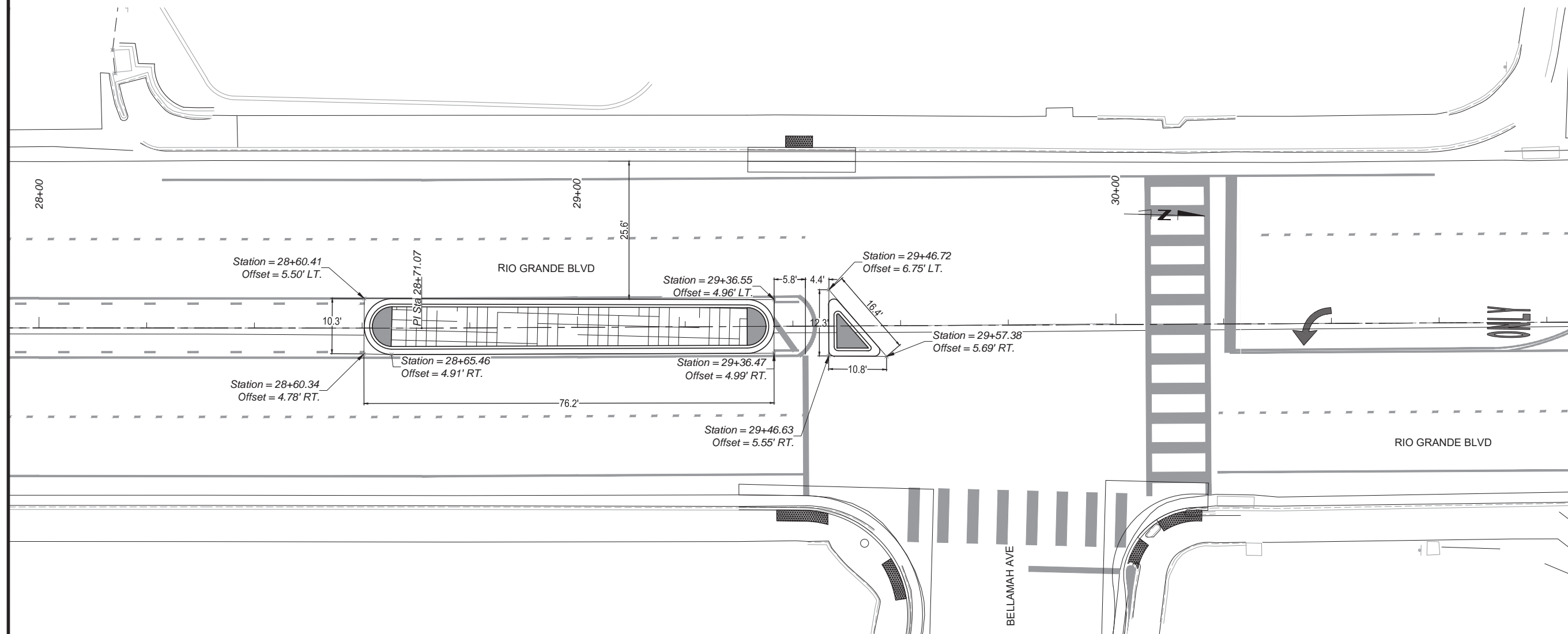
DESIGNED BY: ZST

DRAWN BY: DCA

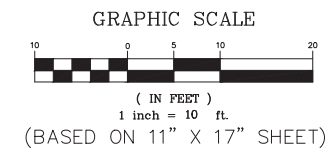
CHECKED BY: ZST

DATE	11/2020
------	---------

Install vertical delineators @ 20' spacing (5' spacing on radius) at proposed median locations. Place delineators 6" inside existing lane markings.



MEDIAN DETAIL
RIO GRANDE BLVD SOUTH OF BELLAMAH AVE



CALL NM ONE-CALL
SYSTEM SEVEN (7) DAYS
PRIOR TO ANY EXCAVATION

DESIGNED BY:	ZST
DRAWN BY:	DCA
CHECKED BY:	ZST
DATE	11/2020



CITY OF ALBUQUERQUE
DEPARTMENT OF MUNICIPAL DEVELOPMENT
ENGINEERING DIVISION

RIO GRANDE BOULEVARD IMPROVEMENTS
CENTRAL AVENUE TO INTERSTATE 40

MEDIAN DIMENSION EXHIBIT

DESIGN REVIEW COMMITTEE	CITY ENGINEER APPROVAL	ZONE MAP NO. C-19 & C-20
		CITY PROJECT NO. 753604
		SHEET NO. 2 OF 2

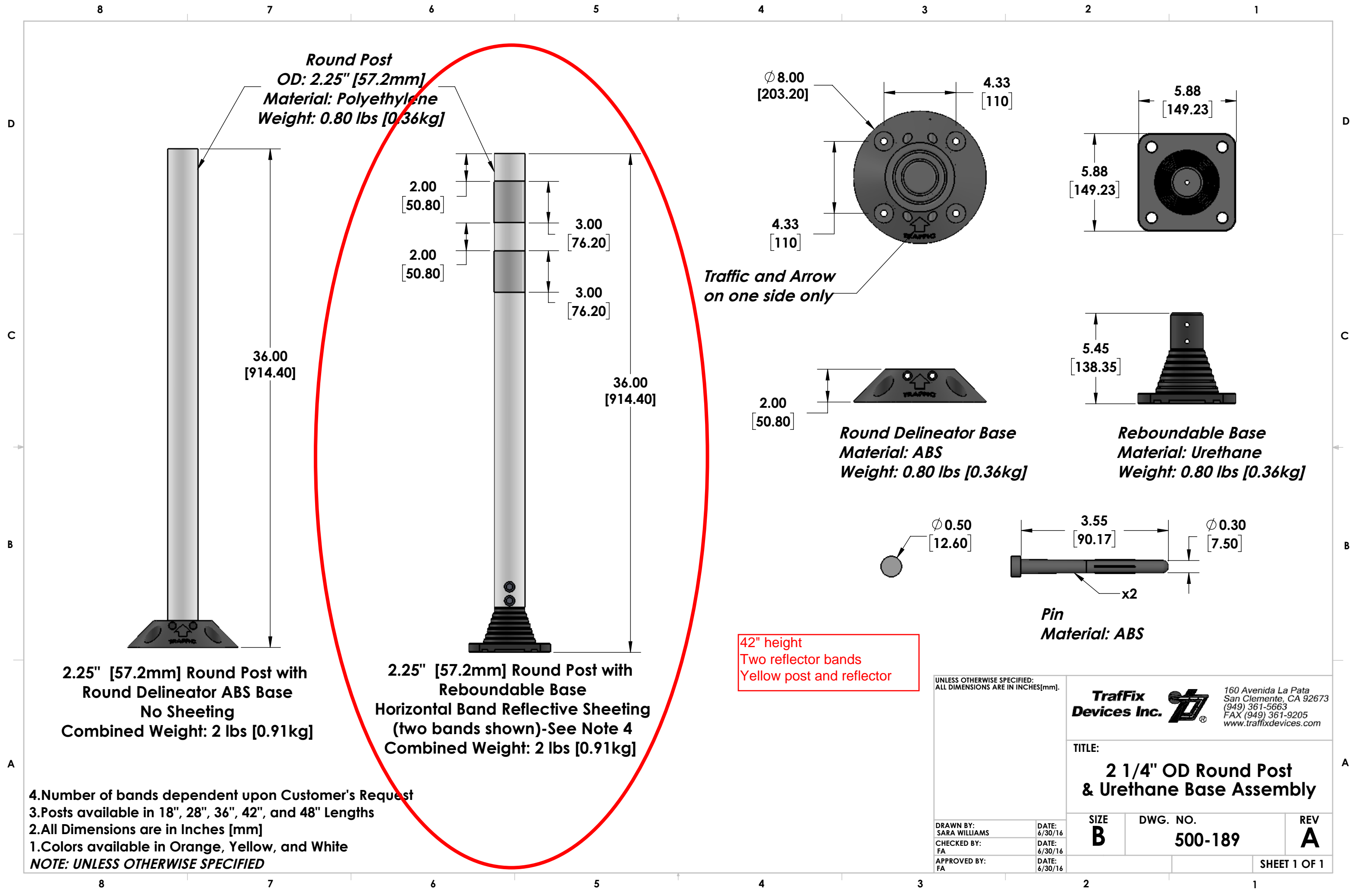
CONSULTANTS

Parametrix

[illegible]

BENCH MARKS

TO REACH THE STATION FROM THE INTERSECTION OF BROADWAY BOULEVARD AND CENTRAL AVENUE, TRAVEL NORTH 0.45 MILES ON BROADWAY AVENUE TO LOMAS AVENUE. TURN LEFT ONTO LOMAS AND GO WEST 0.7 MILES TO 18TH STREET AND THE STATION IN THE MEDIAN ON THE WEST SIDE OF THE INTERSECTION. THE SURVEY MARK IS A CITY OF ALBUQUERQUE DISC STAMPED "17-114 1983" SET FLUSH WITH THE TOP OF THE CONCRETE.



Round Post
OD: 2.25" [57.2mm]
Material: Polyethylene
Weight: 0.80 lbs [0.36kg]

ϕ 8.00 [203.20]
4.33 [110]

5.88 [149.23]

Traffic and Arrow
on one side only

Round Delineator Base
Material: ABS
Weight: 0.80 lbs [0.36kg]


Reboundable Base
Material: Urethane
Weight: 0.80 lbs [0.36kg]

42" height
Two reflector bands
Yellow post and reflector

2.25" [57.2mm] Round Post with
Round Delineator ABS Base
No Sheeting
Combined Weight: 2 lbs [0.91kg]

2.25" [57.2mm] Round Post with
Reboundable Base
Horizontal Band Reflective Sheeting
(two bands shown)-See Note 4
Combined Weight: 2 lbs [0.91kg]

Pin
Material: ABS

UNLESS OTHERWISE SPECIFIED: ALL DIMENSIONS ARE IN INCHES[mm].		<div><div><div>TraFFix</div><div>Devices Inc.</div></div><div></div></div>		160 Avenida La Pata San Clemente, CA 92673 (949) 361-5663 FAX (949) 361-9205 www.traffixdevices.com	
		TITLE: <div>2 1/4" OD Round Post & Urethane Base Assembly</div>			
DRAWN BY: SARA WILLIAMS	DATE: 6/30/16	SIZE B	DWG. NO. 500-189		REV A
CHECKED BY: FA	DATE: 6/30/16				
APPROVED BY: FA	DATE: 6/30/16				SHEET 1 OF 1

4.Number of bands dependent upon Customer's Request
3.Posts available in 18", 28", 36", 42", and 48" Lengths
2.All Dimensions are in Inches [mm]
1.Colors available in Orange, Yellow, and White
NOTE: UNLESS OTHERWISE SPECIFIED