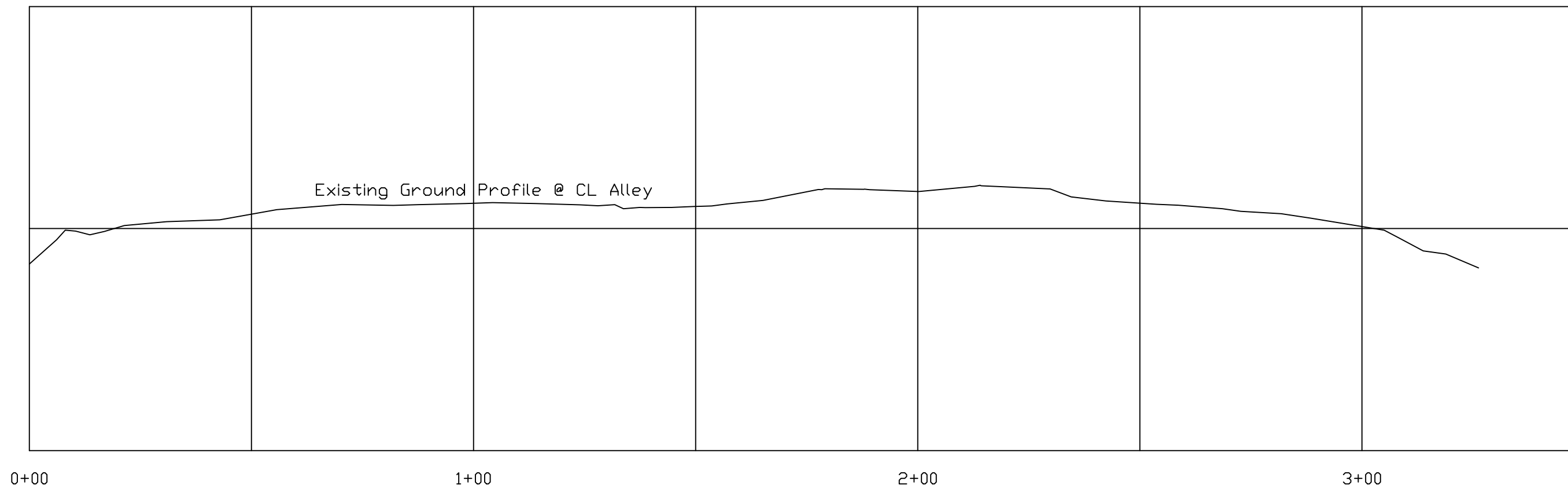


## ALLEY BETWEEN 8TH STREET AND 9TH STREET BEHIND MRCOG

4960

4955

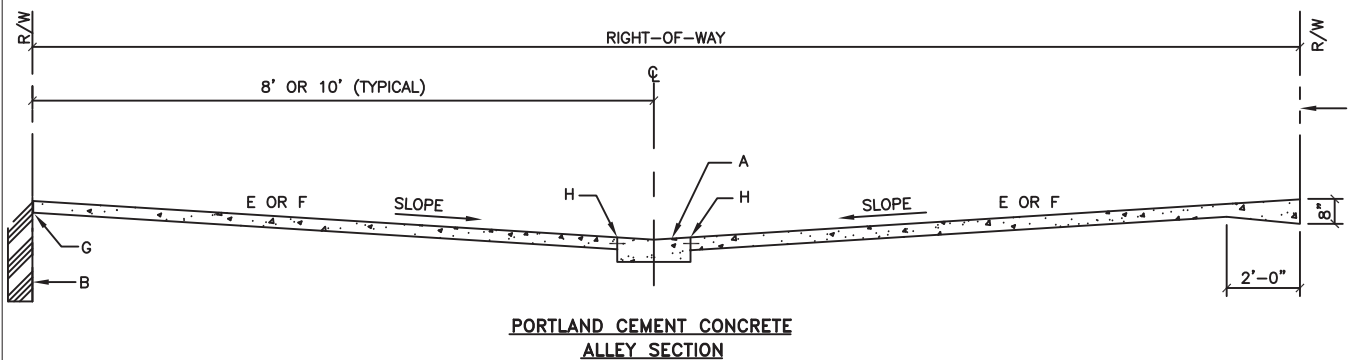
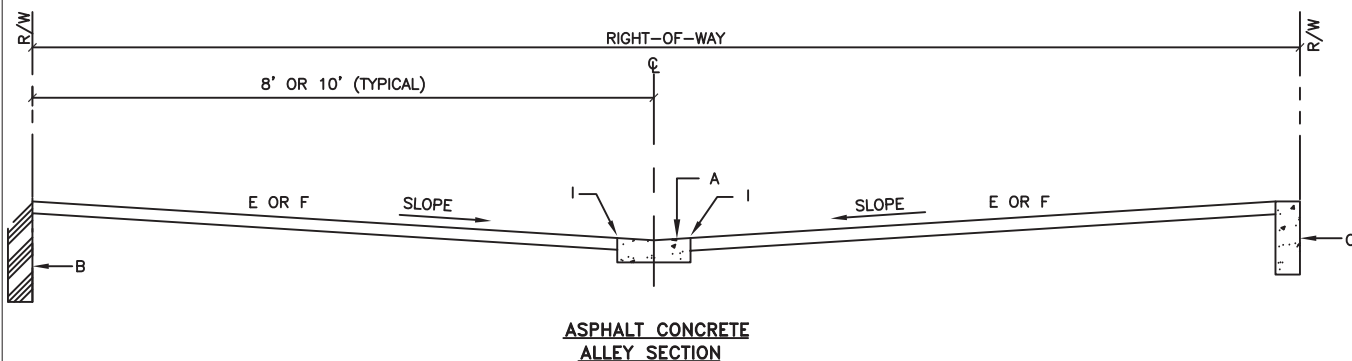
4950











#### GENERAL NOTES:

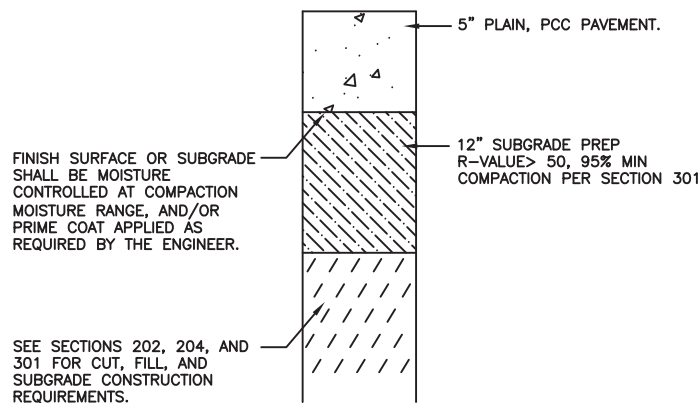
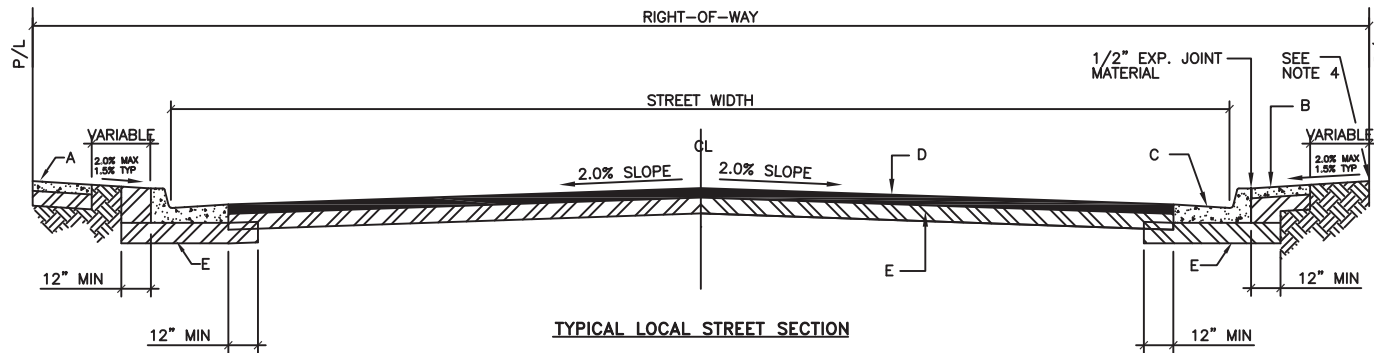
1. REQUIREMENT FOR COMMERCIAL OR RESIDENTIAL PAVEMENT SECTION SHALL BE DETERMINED BY THE ENGINEER.
2. TRANSVERSE SLOPE OF ALLEY PAVEMENT SURFACE SHALL BE 2% MIN.
3. TYPE AND LOCATION OF JOINTS SHALL BE DEFINED ON THE PROJECT CONSTRUCTION PLANS, SEE SECTION 337.

#### CONSTRUCTION NOTES:

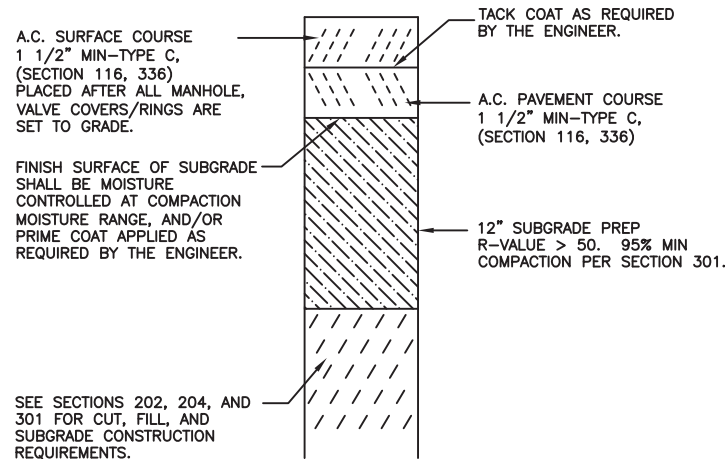
- TBD** A. ALLEY GUTTER, SEE DWG. 2415.
- B. WALL OR BUILDING FOUNDATION AT PROPERTY LINE.
- TBD** C. USE 6" x 18" PORTLAND CEMENT CONCRETE (PCC) CUT-OFF-WALL.
- D. RIGHT-OF-WAY ADJACENT TO OPEN AREA.
- E. **USE RESIDENTIAL SECTION FOR RESIDENTIAL ALLEY USE, SEE DWG. 2405.**
- F. USE ARTERIAL SECTION FOR COMMERCIAL ALLEY USE, SEE DWG. 2407.
- G. USE 1/2" EXPANSION JOINT WHERE PCC PAVEMENT ABUTS WALLS, RIGID PAVEMENT, POLES, TRANSFORMERS, ETC.
- H. TYPE 4 TIED JOINT, SEE DWG. 2450.
- I. SAWCUT AND SEAL JOINT, SEE DWG. 2450.

REVISIONS	CITY OF ALBUQUERQUE
	PAVING COMMERCIAL AND RESIDENTIAL ALLEY SECTION
	DWG. 2411 JUNE 2019





**RIGID PAVEMENT SECTION**



**FLEXIBLE PAVEMENT SECTION**

**GENERAL NOTES:**

- CROWN ON STREET SHALL BE AS FOLLOWS:
  - 32' STREET = 4"
  - 40' STREET = 5"
  - LESS THAN 32' STREET, PAVEMENT SLOPE = 2%
- ALL SUBGRADE COMPACTION FOR C & G SHALL EXTEND 12" MIN ON EITHER SIDE OF C & G OR CURB SECTION.
- SUBGRADE PREPARATION UNDER SIDEWALK AND DRIVE PADS SHALL BE INCIDENTAL TO ITEM.
- FINISH GRADE AT PROPERTY LINE SHALL BE BASED ON A MIN 2% SLOPE FROM TOP OF CURB.
- ALL ASPHALT CONCRETE (AC) PAVEMENT SHALL COMPLY WITH SECTION 116.
- ALL PORTLAND CEMENT CONCRETE (PCC) PAVEMENT SHALL COMPLY WITH SECTION 101.
- IN ACCORDANCE WITH COA DPM THE FOLLOWING APPLIES UNLESS AUTHORIZED OTHERWISE BY THE CITY ENGINEER:
  - \* RESIDENTIAL STREETS SERVING 50 LOTS OR LESS SHALL BE DESIGNED AS LOCAL RESIDENTIAL STREETS.
  - \* RESIDENTIAL STREETS SERVING MORE THAN 50 LOTS WITH AN ANTICIPATED AWDT < 3000 SHALL BE DESIGNED AS MAJOR LOCAL STREETS.
- FOR SUBGRADE R-VALUE < 50, PAVEMENT SECTION SHALL BE DESIGNED IN ACCORDANCE WITH DPM CH. 07
- SUBGRADE PREPARATION SHALL BE PERFORMED AFTER ALL SUBSURFACE UTILITIES ARE CONSTRUCTED.

**CONSTRUCTION NOTES:**

- SIDEWALK AT STANDARD SETBACK.
- SIDEWALK ADJACENT TO CURB. (NON-STANDARD, VARIANCE REQUIRED).
- CURB AND GUTTER HEIGHT TO BE SPECIFIED ON PLANS.
- ASPHALT CONCRETE (AC) OR PORTLAND CEMENT (PCC) PAVEMENT.
- 12" COMPACTED SUBGRADE PREP, 95% COMPACTION.

REVISIONS	CITY OF ALBUQUERQUE
06/2019	PAVING
	LOCAL - RESIDENTIAL STREET SECTION
	DWG. 2405A JUNE 2019