




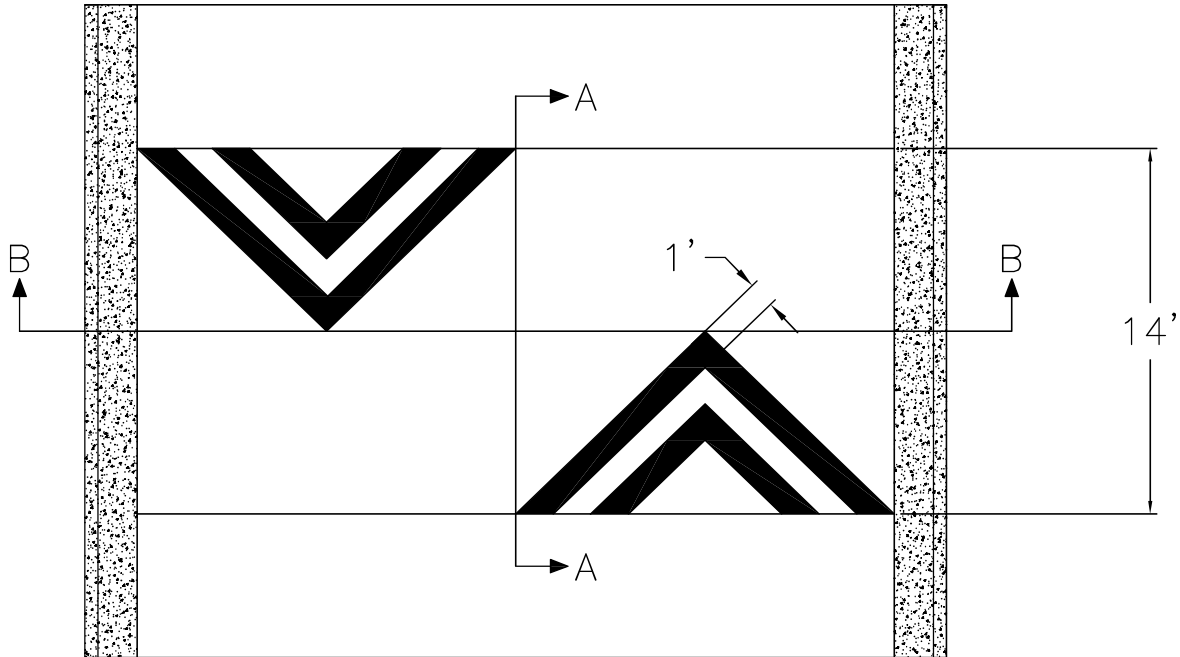
CONSTRUCTION NOTES

- 1 INSTALL NEW SPEED HUMP, PER COA STANDARD
- 2 INSTALL 1" WIDE WHITE THERMOPLASTIC STRIPE
- 3 INSTALL NEW W17-1-30 WITH W16-4p (NEXT 1/4 MILE)

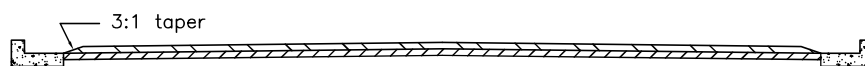
NOTES

SPEED HUMP LOCATIONS MARKED IN FIELD

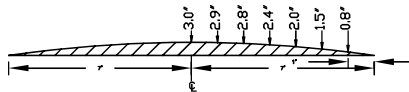
CITY OF ALBUQUERQUE DEPARTMENT OF MUNICIPAL DEVELOPMENT TRAFFIC ENGINEERING DIVISION			 Mo./Day/Yr. 05/25/2000 LAST DESIGN UPDATE
TITLE: PROJECT NAME LINE 1 PROJECT NAME LINE 2			
DESIGNED BY: TIM BROWN REVIEWED BY:			
City Project No. CPN	Zone Map No. D11	Sheet X	



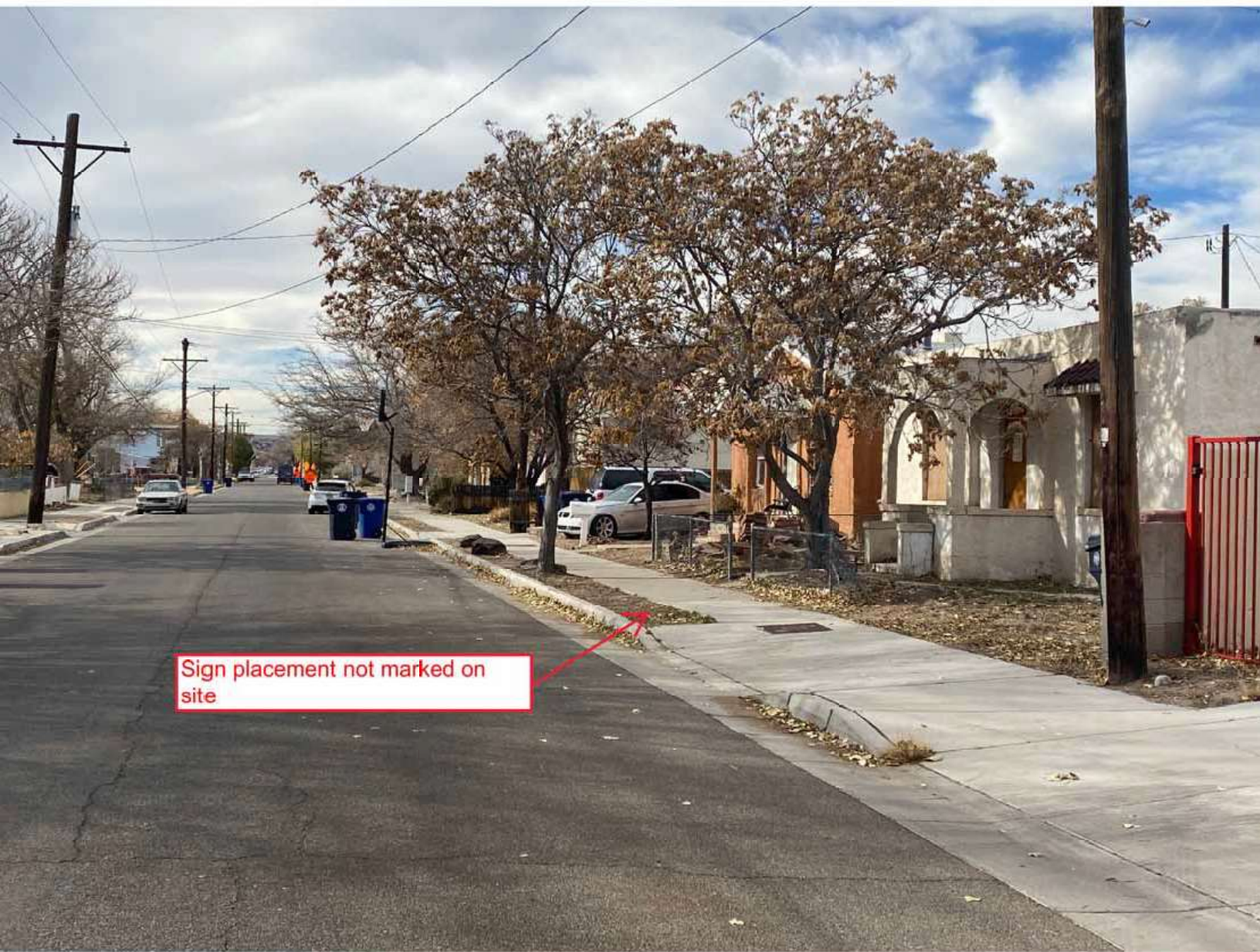
Section B-B



Section A-A



CITY OF ALBUQUERQUE			
DEPARTMENT OF MUNICIPAL DEVELOPMENT			
TRAFFIC ENGINEERING DIVISION			
INFRASTRUCTURE	DESIGNED BY:	T.J.B.	
	DRAWN BY:	T.J.B.	
	CHECKED BY:		
	APPROVED BY:		
14' SPEED HUMP PROFILE AND CROSS SECTION			
SCALE: NTS		DATE:	5/22/02
		ENGINEER'S PROJECT NO.:	SHEET NO.:
			1 of 1

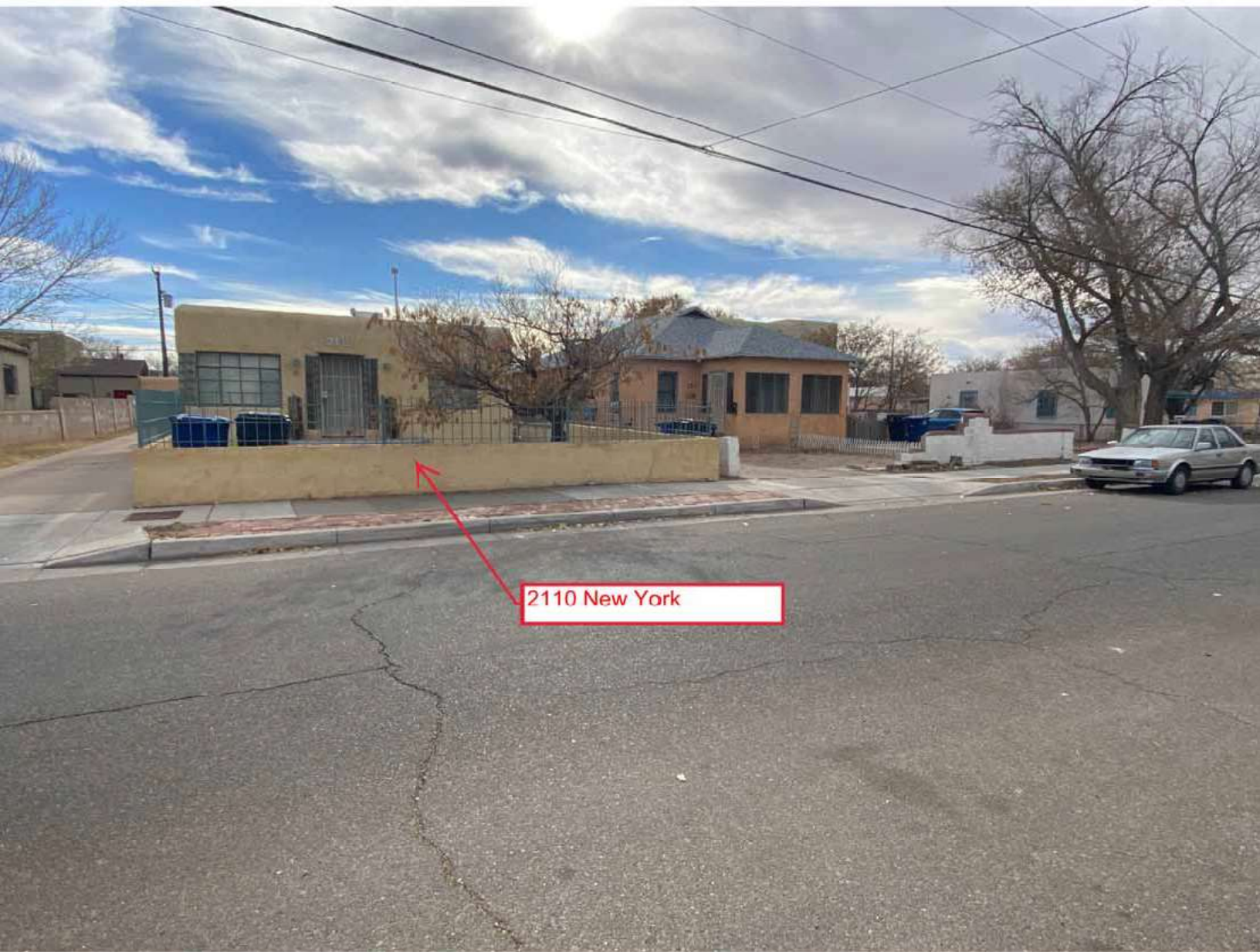


Sign placement not marked on site



Speed hump location marked at 2110 New York

2.9'





Speed hump location marked at
2205 New York



2205 New York