

Eubank

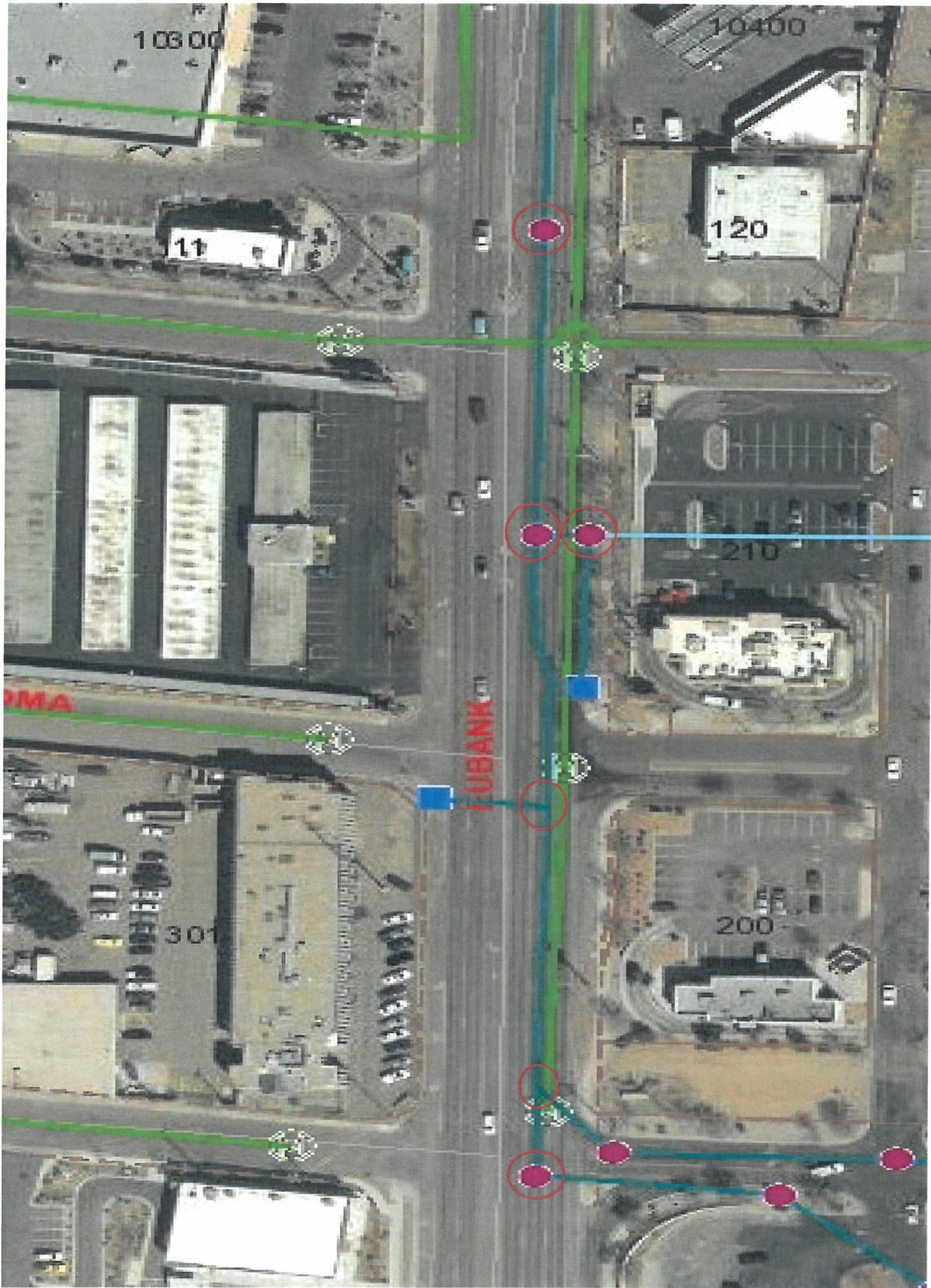


Cochiti

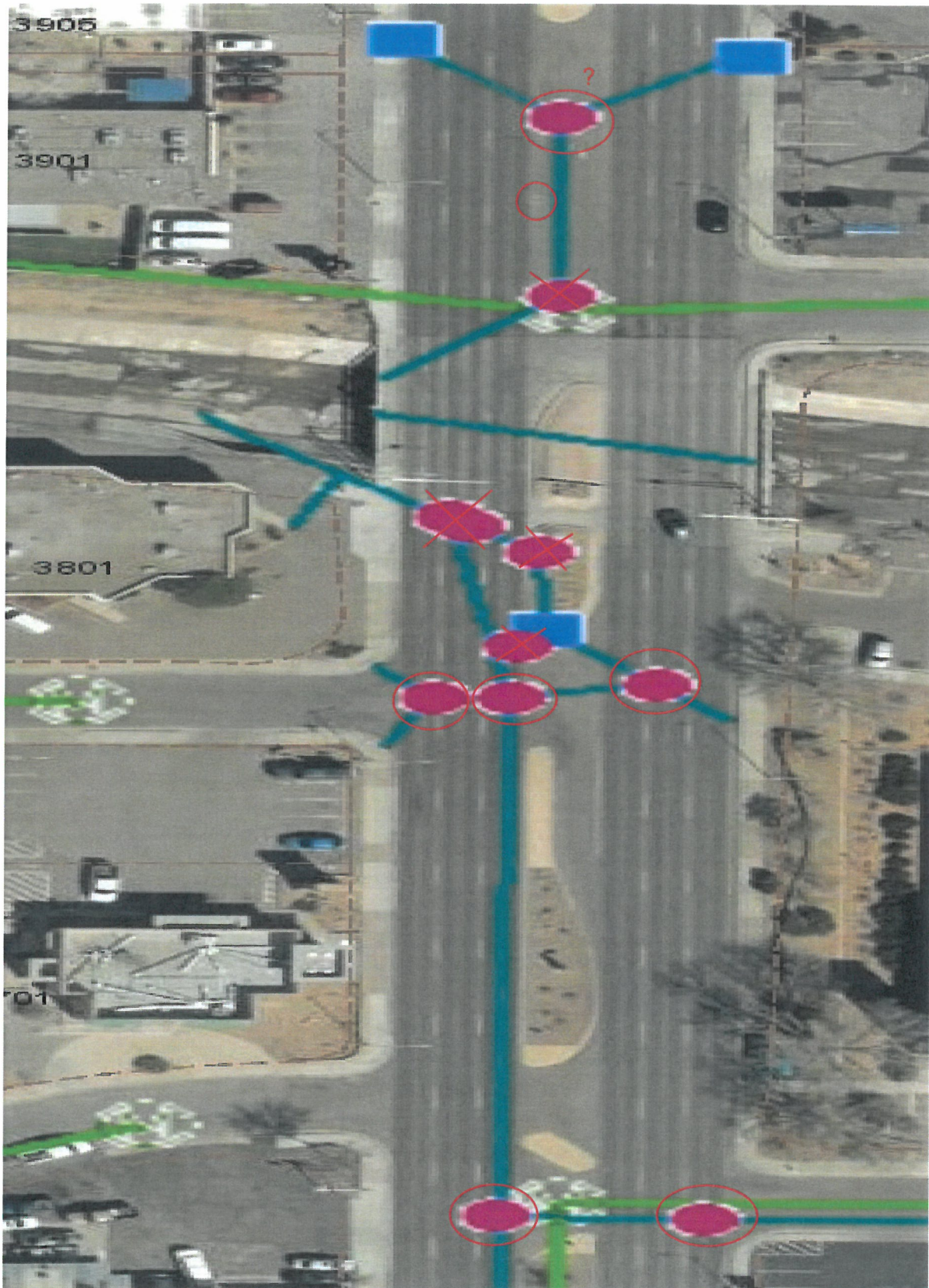
Acoma

Bell

6 SD MH
Adjustments
needed



San Mateo



Ponderosa

Ponderosa

Palo Duro

7 SD MH Adjustments needed.

15 SD MH adjustments total.

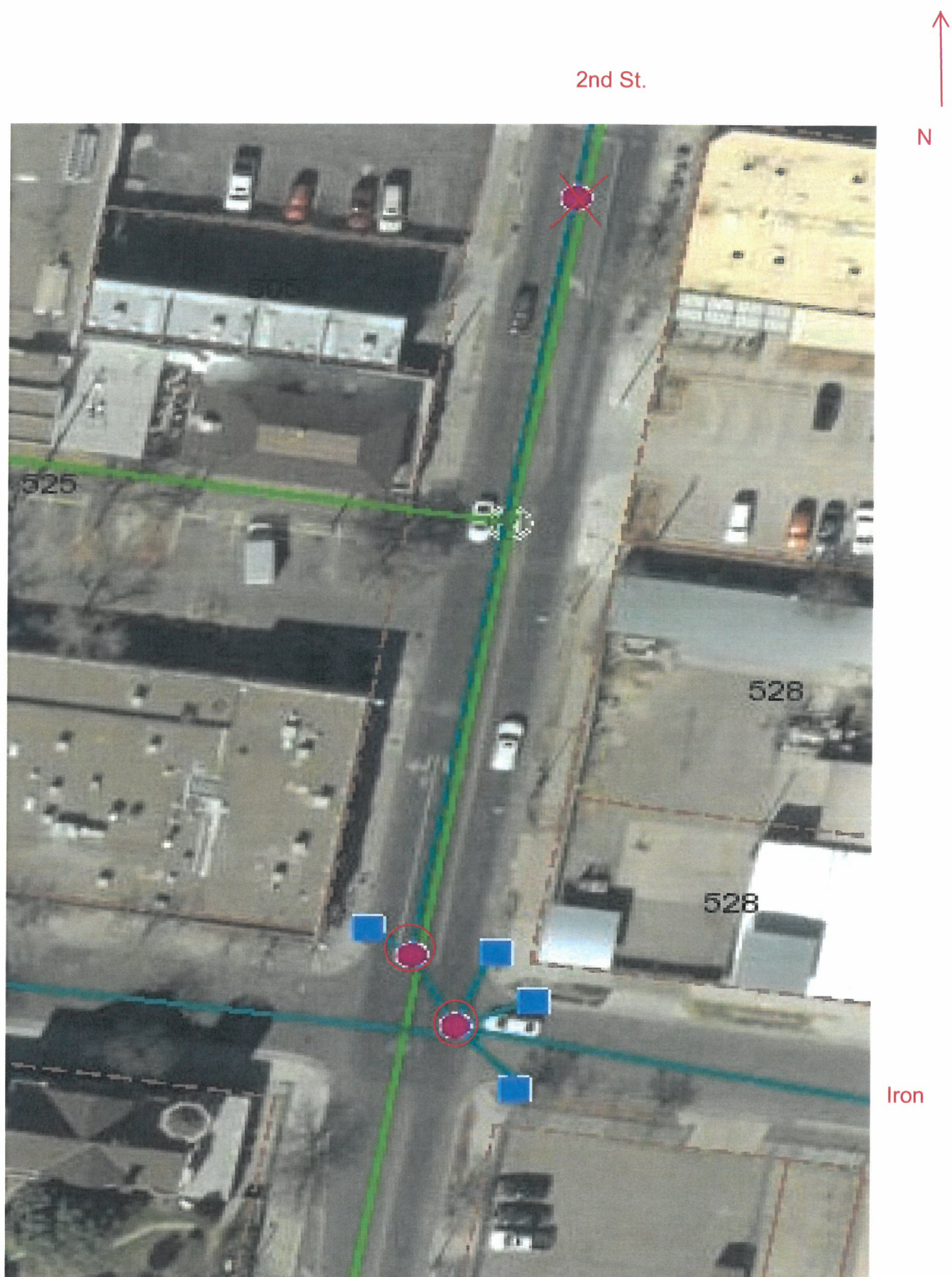
2nd St.



Stover

Hazeldine

1 SD MH adjustment needed.



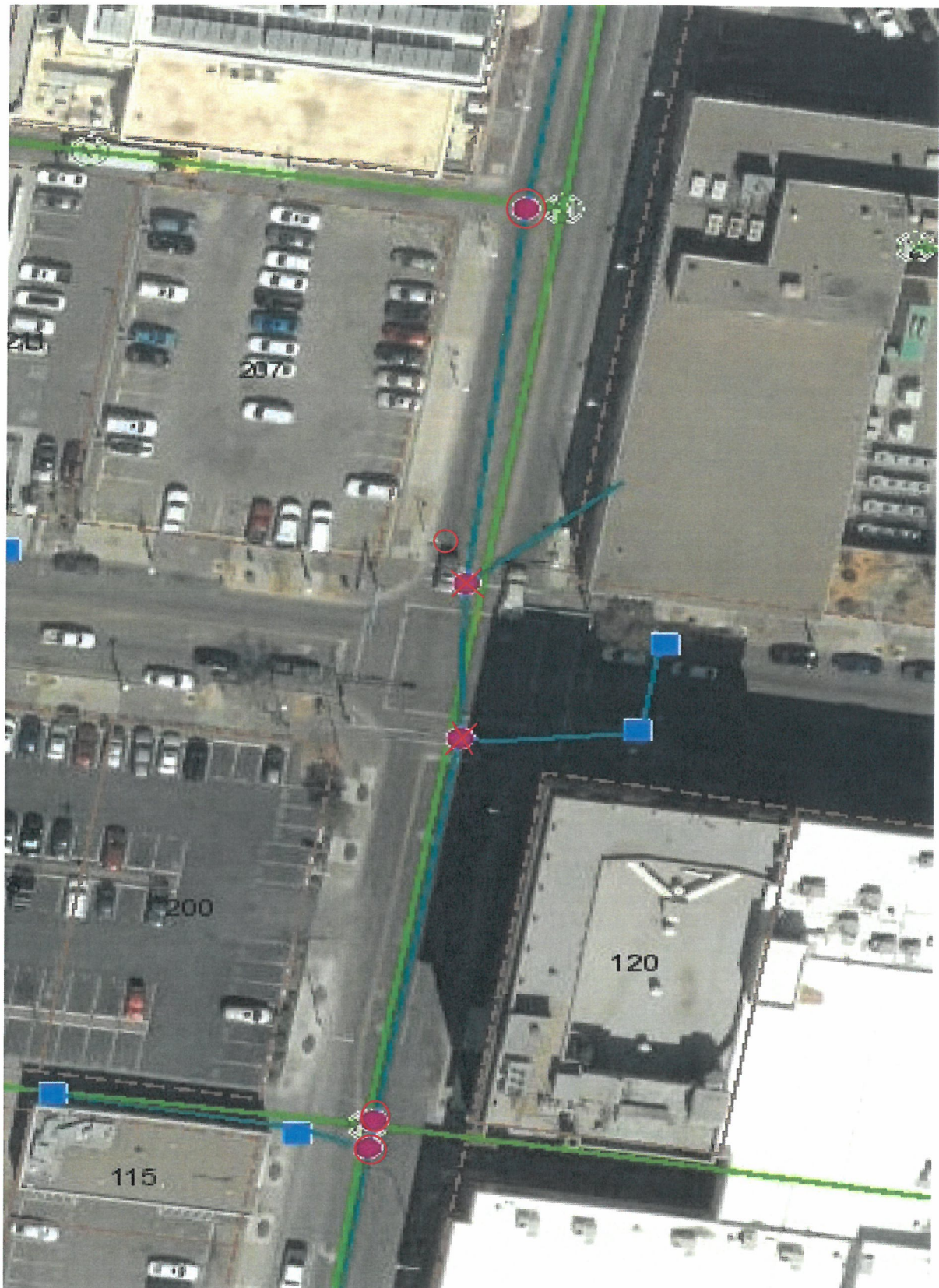
2 SD MH adjustments needed.

An aerial photograph of a city street intersection. Overlaid on the image are green and blue lines and markers. Green lines run diagonally across the intersection, while blue lines run horizontally and vertically. Red and blue circles and squares are placed at various points along these lines, likely representing nodes or specific locations of interest. The background shows buildings, parking lots with cars, and street names like '210', '200', '300', '304', '308', '312', '316', '320', and '324'.

Silver

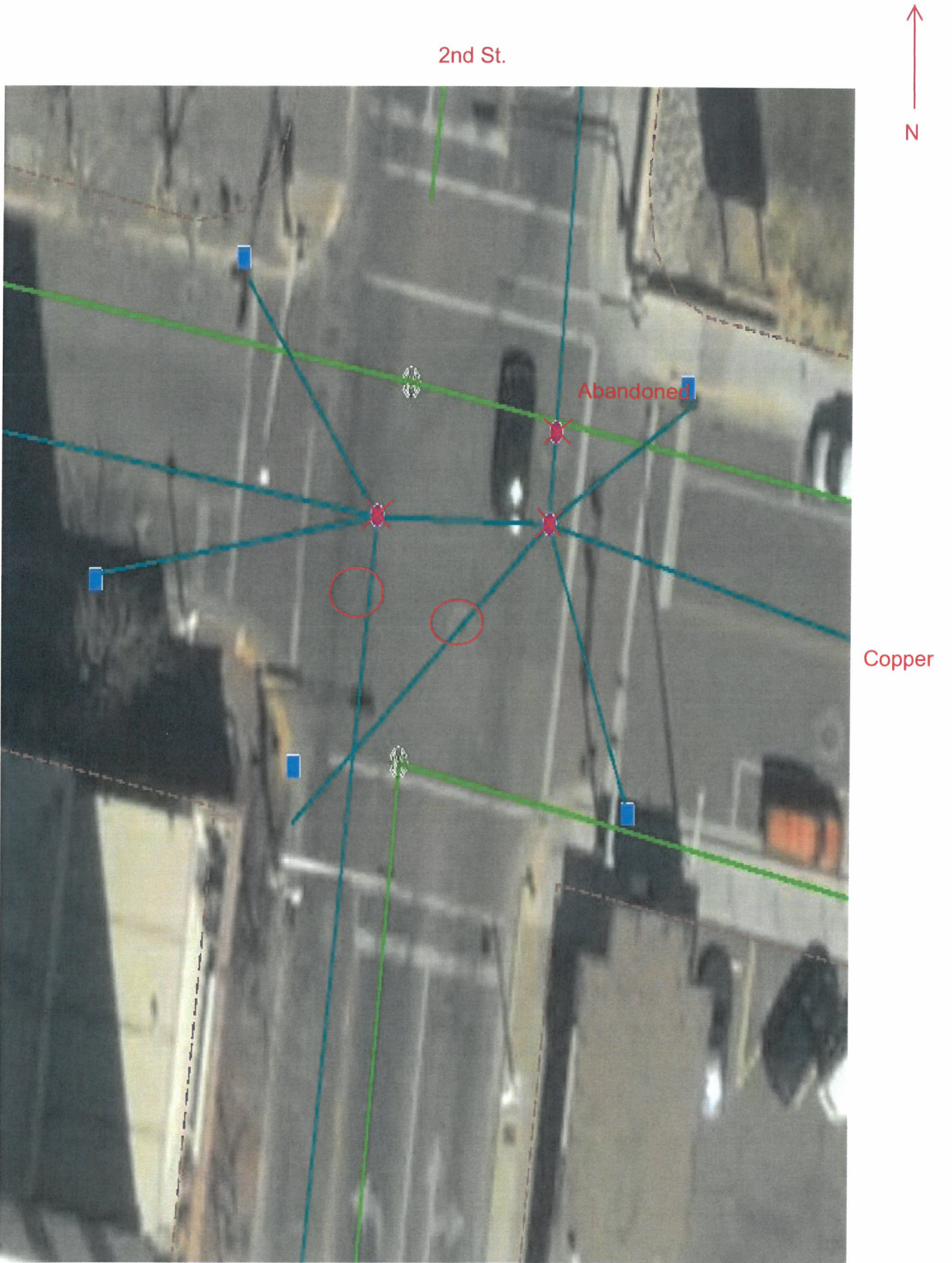
6 SD MH adjustments needed.

2nd St.



Central

4 SD MH Adjustments needed.



2 SD MH Adjustments needed.

43 SD MH adjustments total.

6th St.



Tijeras

Copper

Central

11 SD MH Adjustments needed.



8 SD MH adjustments needed.



4 SD MH adjustments needed.



3 SD MH adjustments needed.



5 SD MH adjustments needed.

N ↑



7 SD MH adjustments needed.

5 SD MH Adjustments needed.

8th St.

7th St.

6th St.



Central

3 SD MH adjustments needed.



N



5th

4th

3rd

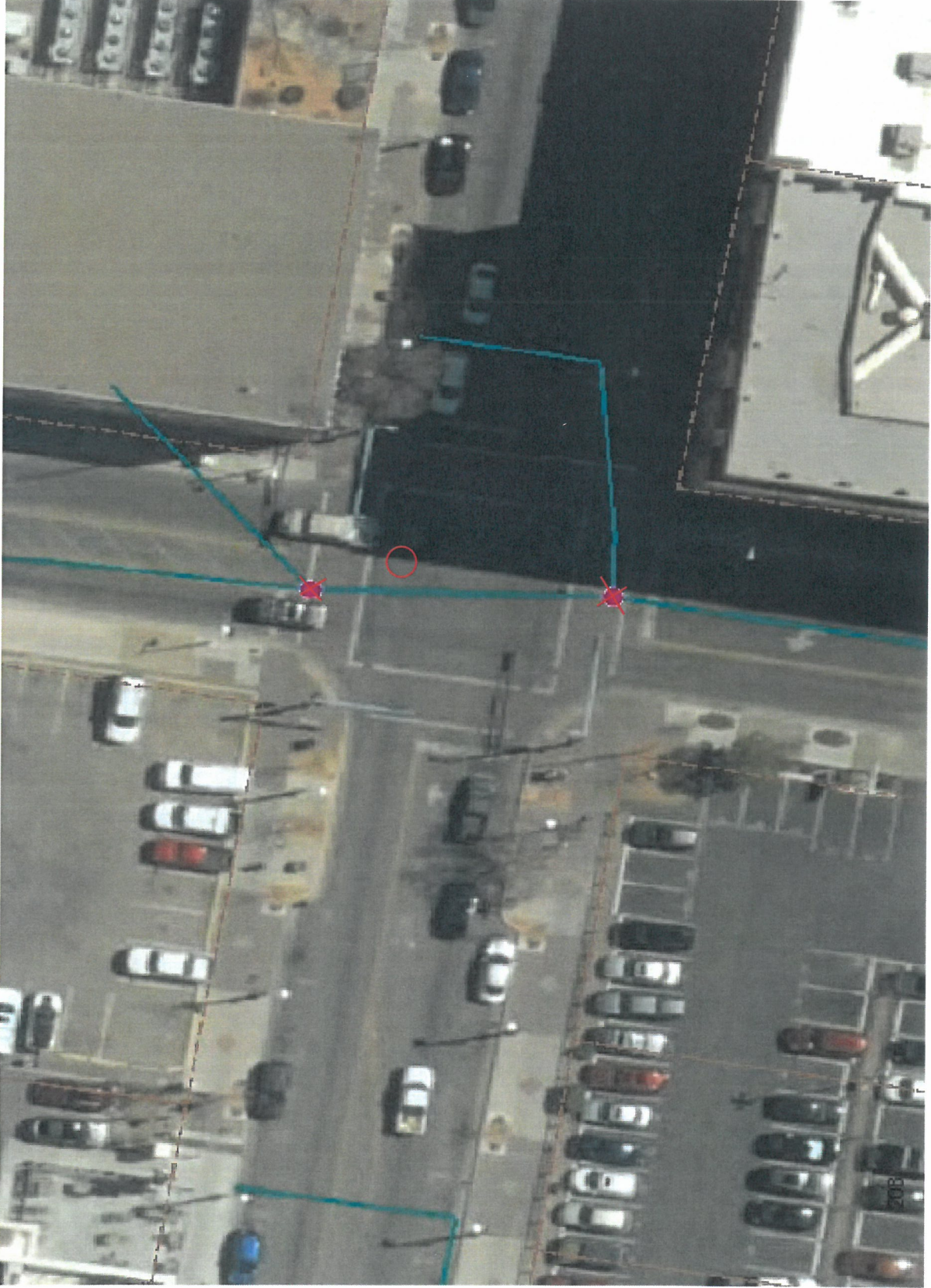


Central

1 SD MH needs adjustment.

← N

2nd



Central

1 SD MH needs adjustment.