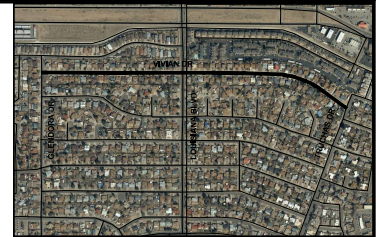


# CITY OF ALBUQUERQUE NEW MEXICO

## DEPARTMENT OF MUNICIPAL DEVELOPMENT TRAFFIC ENGINEERING DIVISION



VICINITY MAP  
ZONE ATLAS MAP E-18, E-19  
NTS



SEE HIGHLIGHTED NOTES ON FINAL PAGE OF WORK ORDER

CABQ TRAFFIC APPROVED FOR CONSTRUCTION DATE

JUNE 2023

VIVIAN DR SPEED CUSHIONS  
GLENDDORA DR TO TRUCHAS DR



8220 SAN PEDRO DRIVE NE, SUITE 150  
ALBUQUERQUE, NM 87113  
PHONE: 505-338-0989  
FAX: 505-338-0989





CALL 811 ONE-CALL  
SYSTEM SEVEN (7) DAYS  
PRIOR TO ANY EXCAVATION

ENGINEER STAMP & SIGNATURE	APPROVALS	ENGINEER	DATE	*****
	DRC CHAIRPERSON			APPROVED FOR CONSTRUCTION
	TRANSPORTATION			
	WATER/SEWER/WASTEWATER			
	HYDROLOGY			
	PARKS			CITY ENGINEER
	CONST. MGMT.			
	CONST. COORD.			DATE
	CITY PROJECT NO.			SHEET

1 OF 9

PROJECT NAME: SUBMITAL NUMBER: PROJECT LIMITS: PROJECT NUMBER:

1	COVER
2	INDEX OF SHEETS
3	GENERAL NOTES
4	SUMMARY OF QUANTITIES
5	SPEED CUSHION DETAIL
6 TO 9	DESIGN PLAN LAYOUT

 <p> <b>811</b>              CALL NM ONECALL              SYSTEM SEVEN (7) DAYS              PRIOR TO ANY EXCAVATION           </p>	<p> <b>INDEX OF SHEETS</b> </p>	<p> <b>CONSULTANTS</b>   <b>LEE ENGINEERING</b>              8225 SAN PEDRO DRIVE, N.E., SUITE 120              ALBUQUERQUE, NM 87113              PHONE: 505.338.0888              FAX: 505.338.0885           </p>

TRANSPORTATION

- ALL WORK DETAILED ON THESE PLANS, EXCEPT AS OTHERWISE STATED OR PROVIDED HEREON, SHALL BE CONSTRUCTED IN ACCORDANCE WITH THE CITY OF ALBUQUERQUE STANDARD SPECIFICATIONS FOR PUBLIC WORKS CONSTRUCTION, 2009 EDITION THROUGH UPDATE #9, REFERRED TO HEREIN AS "STANDARD SPECIFICATIONS."
- ALL CONSTRUCTION WITHIN CITY RIGHT-OF-WAY OR PUBLIC EASEMENTS MUST BE DONE FROM APPROVED WORK ORDER DOCUMENTS ISSUED BY THE CITY.
- ALL WORK ON THIS PROJECT SHALL BE PERFORMED IN ACCORDANCE WITH APPLICABLE FEDERAL, STATE, AND LOCAL LAWS, ORDINANCES, RULES, AND REGULATIONS CONCERNING CONSTRUCTION SAFETY AND HEALTH.
- CONTRACTOR SHALL ASSUME THE SOLE AND COMPLETE RESPONSIBILITY FOR THE JOB SITE CONDITIONS DURING THE COURSE OF THE CONSTRUCTION OF THIS PROJECT, INCLUDING SAFETY OF ALL PERSONS AND PROTECTION OF PROPERTY. THIS REQUIREMENT SHALL APPLY CONTINUOUSLY AND NOT BE LIMITED TO NORMAL WORKING HOURS. CONTRACTOR SHALL DEFEND, INDEMNIFY, AND HOLD HARMLESS THE OWNER AND ENGINEER FROM ANY AND ALL LIABILITY REAL OR ALLEGED, IN CONNECTION WITH THE PERFORMANCE OF WORK ON THIS PROJECT, EXCEPT LIABILITY ARISING FROM THE SOLE NEGLIGENCE OF THE OWNER OR ENGINEER.
- CONTRACTOR SHALL NOTIFY THE CONSTRUCTION ENGINEER (OR CITY PROJECT MANAGER) NOT LESS THAN SEVEN (7) DAYS PRIOR TO STARTING WORK IN ORDER THAT THE CITY SURVEYOR MAY TAKE NECESSARY MEASURES TO INSURE THE PRESERVATION OF SURVEY MONUMENTS. CONTRACTOR SHALL NOT DISTURB PERMANENT SURVEY MONUMENTS WITHOUT THE CONSENT OF THE CITY SURVEYOR AND SHALL NOTIFY THE CITY SURVEYOR AND BEAR THE EXPENSE OF REPLACING ANY THAT MAY BE DISTURBED WITHOUT PERMISSION. ONLY THE CITY SURVEYOR SHALL REPLACE SURVEY MONUMENTS. WHEN A CHANGE IS MADE IN THE FINISHED ELEVATIONS OF THE PAVEMENT OF ANY ROADWAY IN WHICH A PERMANENT SURVEYOR MONUMENT IS LOCATED, CONTRACTOR SHALL, AT HIS/HER OWN EXPENSE, ADJUST THE MONUMENT COVER TO THE NEW GRADE UNLESS OTHERWISE SPECIFIED. REFER TO STANDARD SPECIFICATIONS SECTION 4.4.
- FOR CIP PROJECTS: SEVEN (7) WORKING DAYS PRIOR TO BEGINNING CONSTRUCTION, CONTRACTOR SHALL SUBMIT TO DMD, CONSTRUCTION COORDINATION DIVISION, A DETAILED CONSTRUCTION SCHEDULE. TWO (2) WORKING DAYS PRIOR TO CONSTRUCTION, CONTRACTOR SHALL OBTAIN A BARRICADING PERMIT FROM THE DMD, CONSTRUCTION COORDINATION DIVISION. CONTRACTOR SHALL NOTIFY BARRIAGE ENGINEER (204-3400) PRIOR TO OCCUPYING AN INTERSECTION. REFER TO SECTION 19 OF STANDARD SPECIFICATIONS. PERMIT REQUESTS MAY BE DENIED OR DELAYED DUE TO CONFLICTS WITH OTHER PROJECTS IN THE AREA.
- TWO (2) WORKING DAYS PRIOR TO ANY EXCAVATION, CONTRACTOR MUST CONTACT THE NEW MEXICO 811 (260-1990) FOR LOCATION OF EXISTING UTILITIES.
- CONTRACTOR SHALL ASSUME FINANCIAL RESPONSIBILITY FOR ANY DAMAGE TO EXISTING PAVEMENT, PAVEMENT MARKINGS, SIGNAGE, CURB & GUTTER, A.D.A. RAMPS, AND SIDEWALK DURING CONSTRUCTION APART FROM THOSE SECTIONS INDICATED FOR REMOVAL ON THE PLANS, AND SHALL REPAIR OR REPLACE, PER THE STANDARD SPECIFICATIONS, ANY SUCH DAMAGE.
- CONTRACTOR SHALL MAINTAIN A GRAFFITI-FREE WORK SITE. CONTRACTOR SHALL PROMPTLY REMOVE ANY AND ALL GRAFFITI FROM EQUIPMENT, WHETHER TEMPORARY OR PERMANENT.
- CONTRACTOR SHALL BE RESPONSIBLE FOR PROVIDING AND MAINTAINING ALL CONSTRUCTION SIGNAGE UNTIL THE PROJECT HAS BEEN ACCEPTED BY THE CITY AND OTHER JURISDICTIONAL AUTHORITIES WHERE APPLICABLE.

WATER & SEWER

- PRIOR TO CONSTRUCTION, CONTRACTOR SHALL EXCAVATE AND VERIFY THE HORIZONTAL AND VERTICAL LOCATIONS OF ALL PERTINENT EXISTING UTILITIES AND / OR OBSERVATIONS. SHOULD A CONFLICT EXIST, THE CONTRACTOR SHALL NOTIFY THE ENGINEER SO THE CONFLICT CAN BE RESOLVED WITH A MINIMUM AMOUNT OF DELAY. CONTRACTOR SHALL COORDINATE RELOCATION OF UTILITY COMPANIES AS REQUIRED.
- ALL STREET STRIPING ALTERED OR DESTROYED SHALL BE REPLACED WITH PLASTIC REFLECTORIZED PAVEMENT MARKING BY CONTRACTOR AT THE SAME LOCATION AS EXISTING OR AS INDICATED ON THIS PLAN SET.
- ANY DAMAGE TO THE EXISTING CURB & GUTTER, PAVEMENT, SIDEWALKS, STRIPING, OR SIGNAGE DURING CONSTRUCTION SHALL BE REPLACED AT THE CONTRACTORS EXPENSE.
- OVERNIGHT PARKING OF CONSTRUCTION EQUIPMENT SHALL NOT OBSTRUCT DRIVEWAYS OR DESIGNATED TRAFFIC LANES. THE CONTRACTOR SHALL NOT STORE ANY EQUIPMENT OR MATERIAL WITHIN THE PUBLIC RIGHT-OF-WAY.
- AT ALL PAVEMENT AND REMOVAL AND REPLACEMENTS, SAWCUT EDGES SHALL BE STRAIGHT AND CLEAN, AND LONGITUDINAL JOINTS SHALL NOT BE PLACED WITHIN WHEEL PATHS. PATCHES SHALL BE REGULAR AND SQUARE OR RECTANGULAR, WITH FOUR STRAIGHT SIDES. FINISHED PAVEMENT SURFACE SHALL BE FLUSH WITH EXISTING PAVEMENT SURFACE, WITH NO SPillover OF ASPHALT OR TACK COAT. CARE MUST BE TAKEN TO AVOID DAMAGING THE INTEGRITY OR APPEARANCE OF SURROUNDING PAVEMENT. IF DAMAGED, THE ENTIRE SURFACE PATCH MUST BE EXPANDED TO COVER DAMAGES.
- TWO WEEKS PRIOR TO CONSTRUCTION, THE CONTRACTOR SHALL NOTIFY THE TRANSIT DEPARTMENT OF ANY IMPACT THE PROJECT WILL HAVE ON THE TRANSIT SYSTEM, SUCH AS CAUSING A DETOUR OR THE CLOSURE OR RELOCATION OF A BUS STOP. THE CONTACT PERSON IS DOUGLASS GOFF, OFFICE PHONE 724-3137, CELL PHONE 206-051, OR EMAIL: DGOFF@CABQ.GOV.

OTHER COMMON NOTES

- CONTRACTOR SHALL DETERMINE IN ADVANCE OF CONSTRUCTION IF OVERHEAD UTILITY LINES, SUPPORT STRUCTURES, GUYS, ETC., ARE AN OBSTRUCTION TO CONSTRUCTION OPERATIONS. IF ANY OBSTRUCTIONS TO CONSTRUCTION OPERATIONS ARE PRESENT, CONTRACTOR SHALL BE RESPONSIBLE FOR COORDINATING WITH THE APPROPRIATE UTILITY OWNER TO REMOVE OR SUPPORT THE UTILITY OBSTRUCTION. ANY COST ASSOCIATED WITH THIS EFFORT SHALL BE THE RESPONSIBILITY OF THE CONTRACTOR.
- EXISTING UTILITY LINE LOCATIONS ARE SHOWN AT AN APPROXIMATE MANNER ONLY. LINES MAY EXIST WHERE NONE ARE SHOWN. THE LOCATION OF ANY SUCH EXISTING LINES IS BASED UPON INFORMATION PROVIDED BY THE UTILITY COMPANY. THE OWNER, OR BY OTHERS, AND THE INFORMATION MAY BE INCOMPLETE OR MAY BE OBSOLETE BY THE TIME CONSTRUCTION BEGINS.
- THE ENGINEER HAS UNDERTAKEN NO FIELD VERIFICATION OF THE LOCATION, DEPTH, SIZE, OR TYPE OF EXISTING UNDERGROUND UTILITY LINES, MAKES NO REPRESENTATION PERTAINING THERETO, AND ASSUMES NO RESPONSIBILITY OR LIABILITY THEREFORE. THE CONTRACTOR SHALL FIELD-VERIFY THE LOCATION OF ANY UTILITY LINE IN OR NEAR THE AREA OF THE WORK IN ADVANCE OF AND DURING EXCAVATION WORK. CONTRACTOR IS FULLY RESPONSIBLE FOR ANY AND ALL DAMAGE CAUSED BY HIS/HER FAILURE TO LOCATE, IDENTIFY, AND PRESERVE ANY AND ALL EXISTING UTILITIES.
- CONTRACTOR SHALL PROMPTLY CLEAN UP ANY EXCAVATED MATERIAL WITHIN THE PUBLIC RIGHT-OF-WAY OR PRIVATE ROADWAY EASEMENTS TO PREVENT ANY EXCAVATED MATERIAL BEING WASHED DOWN THE STREET OR INTO ANY PUBLIC DRAINAGE FACILITY.
- REMOVALS SHALL BE DISPOSED OF OFF-SITE AND SHALL BE THE RESPONSIBILITY OF THE CONTRACTOR.
- CONTRACTORS SHALL DISPOSE OF ALL UNSUITABLE MATERIAL IN AN ENVIRONMENTALLY ACCEPTABLE MANNER AT A LOCATION ACCEPTABLE TO THE PROJECT MANAGER. THERE WILL BE NO DIRECT COMPENSATION FOR THIS WORK.
- CONTRACTOR SHALL CONDUCT ALL WORK IN A MANNER WHICH WILL MINIMIZE INTERFERENCE WITH LOCAL TRAFFIC.
- ALL EXISTING SIGNS, MARKERS, DELINEATORS, ETC. WITHIN THE CONSTRUCTION LIMITS SHALL BE REMOVED, STORED, AND RE-SET BY THE CONTRACTOR.
- IF CULTURAL RESOURCES, SUCH AS HISTORIC OR PRE-HISTORIC ARTIFACTS, OR HUMAN REMAINS ARE DISCOVERED DURING EXCAVATION OR CONSTRUCTION, WORK SHALL CEASE AND THE CONSTRUCTION ENGINEER SHALL NOTIFY THE COUNTY OFFICE OF THE MEDICAL EXAMINER AT 272-3053. IF THE MEDICAL EXAMINER DETERMINES THAT HUMAN REMAINS ARE NOT PRESENT, THE CONSTRUCTION ENGINEER SHALL NOTIFY THE STATE HISTORIC PRESERVATION OFFICER (SHPO) AT 827-6320.
- IF OBJECTS OF HISTORICAL, ARCHAEOLOGICAL, PALEONTOLOGICAL, OR OTHER OBJECTS OF ANTIQUITY ARE ENCOUNTERED, CONTRACTOR SHALL CEASE OPERATIONS AND IMMEDIATELY NOTIFY THE OWNER.



LEE ENGINEERING  
825 JEFFERSON AVE. SUITE 120  
ALBUQUERQUE, NM 87111  
PHONE: 505.263.8888  
FAX: 505.263.8889

CONSULTANTS

DESIGN MANUS

SEAL

NO.	DATE	DESIGNED BY	BY
NO.	DATE	DRAWN BY	BY
NO.	DATE	CHECKED BY	BY
NO.	DATE	IN CHARGE BY	BY
NO.	DATE	FIELD SUPERVISOR BY	BY
NO.	DATE	CONTRACTOR BY	BY
NO.	DATE	OWNER BY	BY
NO.	DATE	APPROVED BY	BY



CALL 811 ONE-CALL  
SYSTEM SEVEN (7) DAYS  
PRIOR TO ANY EXCAVATION

DESIGNED BY: ES  
DRAWN BY: ES  
CHECKED BY: JK  
DATE: 06/20/23



CITY OF ALBUQUERQUE  
DEPARTMENT OF MUNICIPAL DEVELOPMENT  
TRAFFIC ENGINEERING DIVISION  
VMAN DRIVE SPEED CUSHIONS  
GENERAL NOTES

DESIGN REVIEW COMMITTEE

CITY ENGINEER APPROVAL

ZONE MAP NO.  
15-18, E-19  
CITY PROJECT NO.  
SHEET NO. 3 OF 9

SUMMARY OF QUANTITIES									
BID ITEM #	COA ITEM #	ITEM DESCRIPTION	UNIT	CONSTRUCTION ENGINEERING		ROADWAY		PROJECT TOTAL (BOP TO EOP)	
				USE	FINAL	USE	FINAL	USE	FINAL
1	19.010	CONSTRUCTION TRAFFIC CONTROL & BARRICADING, COMPLETE	L.S.	1				1	
2	329.010	PM SC, 5/8" SEAL COAT, PLANT MIX 5/8" THICK, CIP. SD 2408.	SQ. YD.			240		240	
3	336.120	TACK COAT, CATIONIC EMULSIFIED ASPHALT, CIP.	SQ. YD.			240		240	
4	336.080	ASPHALT CONC., PLACEMENT 3"	SQ. YD.			240		240	
5	441.040	REFLECTORIZED PLASTIC MARKING ARROW, SYMBOL OR WORD, CIP	EACH			28		28	
6	450.001	ALUMINUM PANEL SIGN, CIP	SQ. YD.			5		5	
7	450.010	SQUARE TUBE STEEL POSTS & BASE POSTS FOR ALUMINUM PANEL SIGN, CIP	LIN. FT.			58		58	
8	621.410	MOBILIZATION	L.S.	1				1	

**LEE ENGINEERING**  
8219 WASHINGTON AVE. SUITE 150  
PHOENIX, ARIZONA 85043  
TEL: 602.998.0888  
FAX: 602.998.0889

CONSULTANTS

DESIGN MARKS

SEA

SEA



CALL 811 ONE-CALL  
SYSTEM SEVEN (7) DAYS  
PRIOR TO ANY EXCAVATION



DESIGNED BY: ES  
DRAWN BY: ES  
CHECKED BY: JN  
DATE: 06/2023  
CITY OF ALBUQUERQUE  
DEPARTMENT OF MUNICIPAL DEVELOPMENT  
TRAFFIC ENGINEERING DIVISION  
VIVIAN DRIVE SPEED CUSHIONS  
SUMMARY OF QUANTITIES

DESIGN REVIEW COMMITTEE

CITY ENGINEER APPROVAL

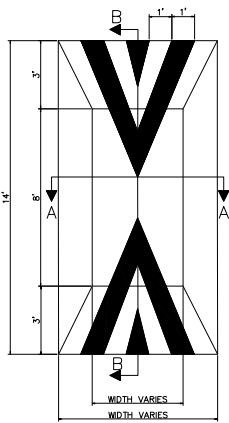
ZONE MAP NO.

15-18, E-19

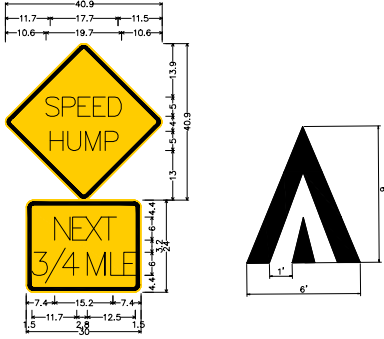
CITY PROJECT NO.

SHEET NO.

4 OF 9



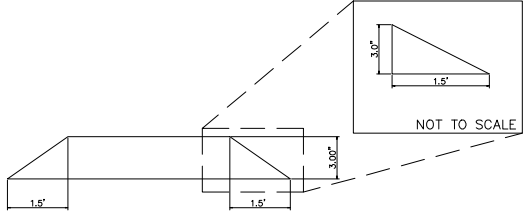
SPEED CUSHION STRIPING LAYOUT



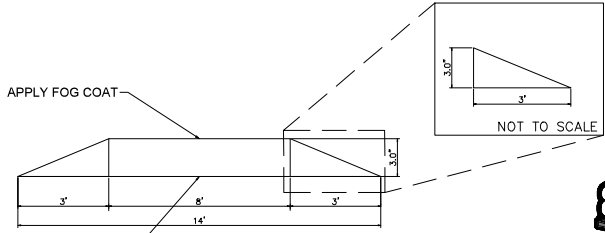
W17-1\_30x30;  
30.0" across sides 1.9" Radius, 0.8" Border, 0.5" Indent, Black on Yellow;  
"SPEED", D 2K specified length;  
"HUMP", D 2K specified length;  
W16-4P\_30x24;  
1.9" Radius, 0.8" Border, 0.5" Indent, Black on Yellow;  
"NEXT", C 2K specified length;  
"3/4 MILE", C 2K specified length;

SPEED CUSHION MARKING

- GENERAL NOTES**
1. EXACT LOCATIONS WILL BE MARKED IN THE FIELD BY THE PROJECT MANAGER.
  2. ALL ORGANIC MATERIAL IN CRACKS OR JOINTS SHALL BE REMOVED PRIOR TO PAVING.
  3. APPLY AN ASPHALT TACK COAT TO COMPLETELY COVER EXISTING SURFACES, BASE PAVING AND VERTICAL SURFACES, IMMEDIATELY PRIOR TO PAVING.
  4. 3" DENSE ACP AND TACK COAT SHALL BE PLACED WHEN THE AVERAGE SURFACE TEMPERATURE IS 40 DEGREES FAHRENHEIT AND RISING.
  5. ALL VERTICAL DIMENSIONS SHALL BE CONSIDERED TO  $\pm 0.25$  INCH.
  6. ACP PAVEMENT SHALL BE COMPACTED TO AT LEAST 92 PERCENT OF THE THEORETICAL DENSITY.
  7. APPLY AN EMULSIFIED FOG COAT.
  8. ALL SIGNING AND STRIPING SHALL CONFORM TO THE LATEST EDITION OF THE MUTCD.



SECTION A-A



SECTION B-B



DESIGNED BY: EIS  
DRAWN BY: EIS  
CHECKED BY: JK  
DATE: 06/2023  
CITY OF ALBUQUERQUE  
DEPARTMENT OF MUNICIPAL DEVELOPMENT  
TRAFFIC ENGINEERING DIVISION  
VIVIAN DRIVE SPEED CUSHIONS  
SPEED CUSHION DETAIL

DESIGN REVIEW COMMITTEE	CITY ENGINEER APPROVAL	ZONE MAP NO. E-18, E-19
		CITY PROJECT NO.
		SHEET NO. 5 OF 9

CONSULTANTS

LEE ENGINEERING

8255 VANDERBILT AVENUE, SUITE 150  
NORTH ALBUQUERQUE, NM 87117  
PHONE: 505.338.8888  
WWW.LEEENGINEERING.COM

DESIGNED BY

DATE

NO. OF SHEETS

BY

DESCRIPTION

CONTRACTOR

DATE

DESIGNED BY

DATE

NO. OF SHEETS

BY

DESCRIPTION

CONTRACTOR

DATE

DESIGNED BY

DATE

NO. OF SHEETS

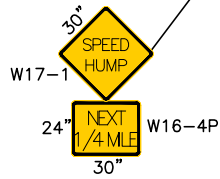
BY

DESCRIPTION

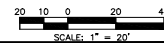
CONTRACTOR

DATE

BEGINNING OF SEGMENT  
VIVIAN DR STA 10+00



MATCH LINE STA 13+60  
SEE ABOVE



CALL 811 ONE-CALL  
SYSTEM SEVEN (7) DAYS  
PRIOR TO ANY EXCAVATION



CITY OF ALBUQUERQUE  
DEPARTMENT OF MUNICIPAL DEVELOPMENT  
TRAFFIC ENGINEERING DIVISION  
VIVIAN DRIVE SPEED CUSHIONS

STA 10+00 TO 17+50

DESIGN REVIEW COMMITTEE

CITY ENGINEER APPROVAL

ZONE MAP NO.  
15-18, E-19

CITY PROJECT NO.

CITY PROJECT NO.

CITY PROJECT NO.

SHEET NO.

SHEET NO.

SHEET NO.

6 OF 9

CONSULTANTS

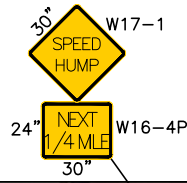
LEE ENGINEERING

8219 UNIVERSITY AVENUE, SUITE 150  
ALBUQUERQUE, NM 87131  
PHONE: 505-263-8888  
FAX: 505-263-8889

MATCH LINE STA 17+50  
SEE SHEET 6



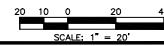
MATCH LINE STA 21+50  
SEE BELOW



MATCH LINE STA 21+50  
SEE ABOVE



MATCH LINE STA 25+50  
SEE SHEET 6



DESIGNED BY: ES  
DRAWN BY: ES  
CHECKED BY: JX  
DATE: 06/2023

CITY OF ALBUQUERQUE  
DEPARTMENT OF MUNICIPAL DEVELOPMENT  
TRAFFIC ENGINEERING DIVISION  
VIVIAN DRIVE SPEED CUSHIONS

STA 17+50 TO 25+50

DESIGN REVIEW COMMITTEE	CITY ENGINEER APPROVAL	ZONE MAP NO. 15-18, E-19
		CITY PROJECT NO.
		SHEET NO. 7 OF 9

CONSULTANTS

LEE ENGINEERING  
8219 SANDHILL AVENUE, SUITE 150  
BIRMINGHAM, AL 35211  
PHONE: 205-954-8889  
FAX: 205-954-8899

REVISIONS

DATE

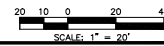
		BY
		DESCRIPTION
		CONTRACTOR
		DATE
		DESIGNED BY
		DATE
		FIELD SUPERVISOR
		DATE
		PERMANENCE CORRECTED BY
		DATE

MATCH LINE STA 25+50  
SEE SHEET 7



30" W17-1  
24" NEXT 1/2 MILE W16-4P  
30"

MATCH LINE STA 29+50  
SEE ABOVE



CALL NH ONE-CALL  
SYSTEM SEVEN (7) DAYS  
PRIOR TO ANY EXCAVATION



CITY OF ALBUQUERQUE  
DEPARTMENT OF MUNICIPAL DEVELOPMENT  
TRAFFIC ENGINEERING DIVISION

VIVIAN DRIVE SPEED CUSHIONS  
STA 25+50 TO 33+50

DESIGN REVIEW COMMITTEE	CITY ENGINEER APPROVAL	ZONE MAP NO. 15-18, E-19
		CITY PROJECT NO.
		SHEET NO. 8 OF 9

CONSULTANTS

LEE ENGINEERING  
8219 WASHINGTON AVE. SUITE 150  
BIRMINGHAM, AL 35211  
PHONE: 205-954-8889  
FAX: 205-954-8899

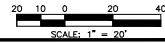
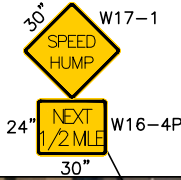
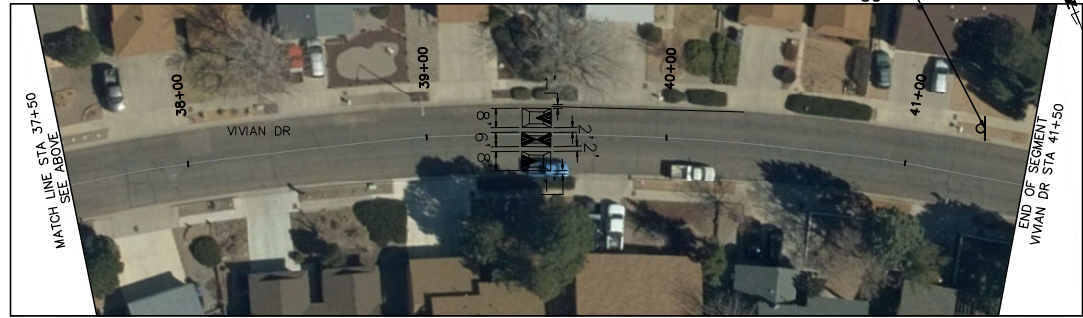
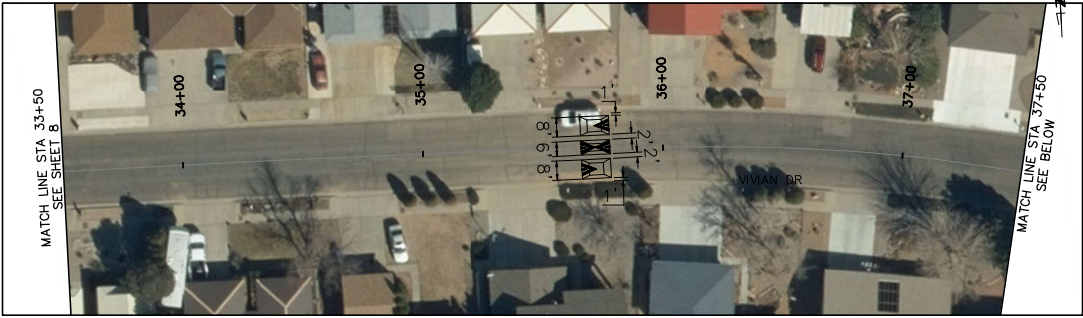
BENCH MARKS

SEA

NO.	DATE	DESCRIPTION	BY
1		DESIGN	
2		CONTRACTOR	
3		DATE	
4		DATE	
5		DATE	
6		DATE	
7		DATE	
8		DATE	
9		DATE	
10		DATE	

DESIGNED BY: ES  
DRAWN BY: ES  
CHECKED BY: JX  
DATE: 06/20/23





DESIGNED BY: ES DRAWN BY: ES CHECKED BY: JX DATE: 06/20/23	
CITY OF ALBUQUERQUE DEPARTMENT OF MUNICIPAL DEVELOPMENT TRAFFIC ENGINEERING DIVISION <b>VIVIAN DRIVE SPEED CUSHIONS</b> STA 33+50 TO 41+50	
DESIGN REVIEW COMMITTEE  	CITY ENGINEER APPROVAL  
ZONE MAP NO. 15-18, E-19 CITY PROJECT NO.  SHEET NO. 9 OF 9	

CONSULTANTS

**LEE ENGINEERING**

8119 W. UNIVERSITY BLVD. SUITE 150  
 ALBUQUERQUE, NM 87131  
 PHONE: 505-263-8889  
 FAX: 505-263-8890

REVISIONS

NO.	DATE	DESCRIPTION	BY

DESIGNED BY: ES

DRAWN BY: ES

CHECKED BY: JX

DATE: 06/20/23

PROJECT NO. 15-18, E-19

PROJECT NAME: VIVIAN DRIVE SPEED CUSHIONS

PROJECT LOCATION: STA 33+50 TO 41+50

PROJECT DATE: 06/20/23

PROJECT STATUS: IN PROGRESS