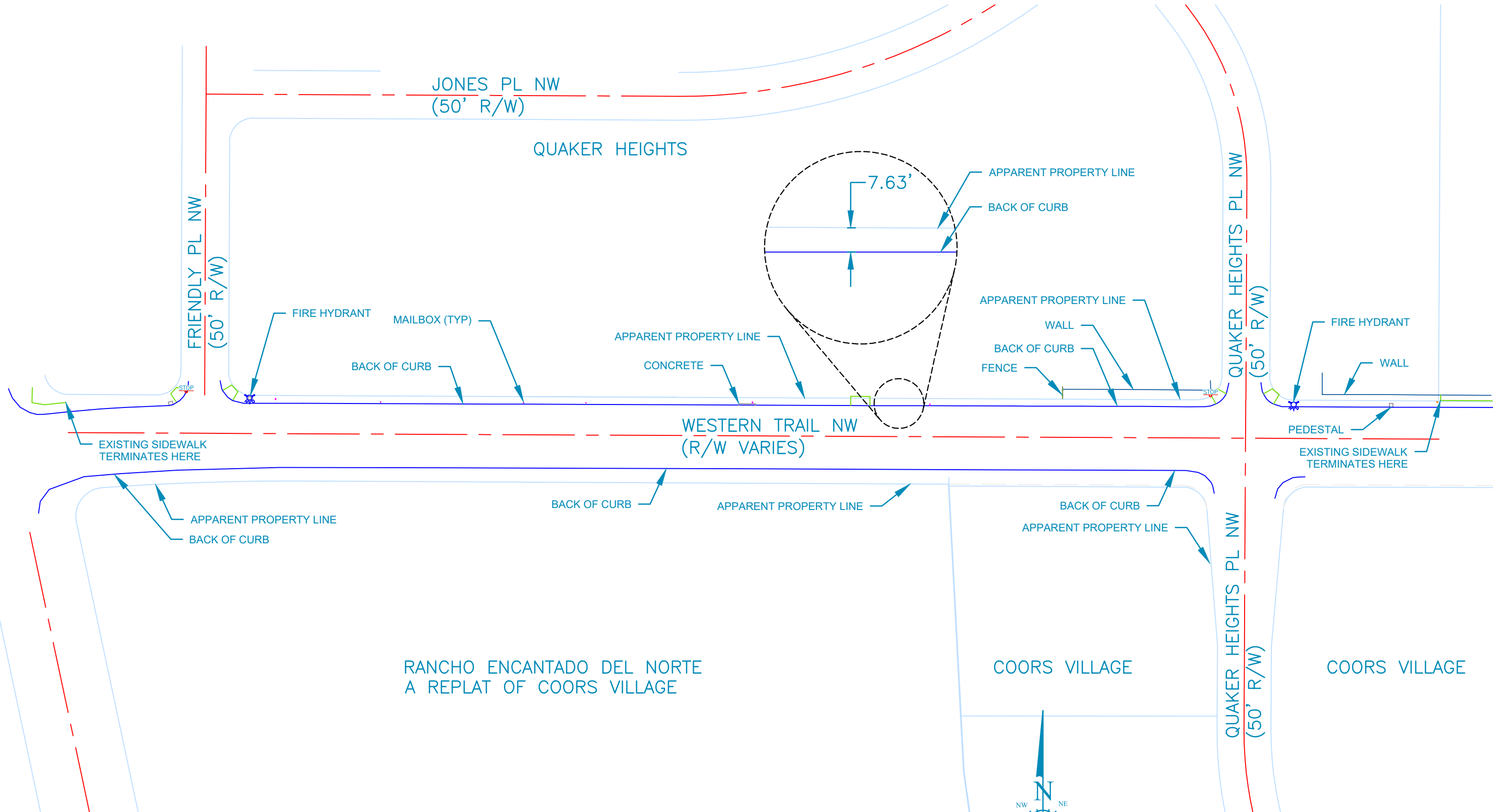


Add sidewalk,
replace ADA
ramps, remove
existing
landscape,
construct new
driveways.

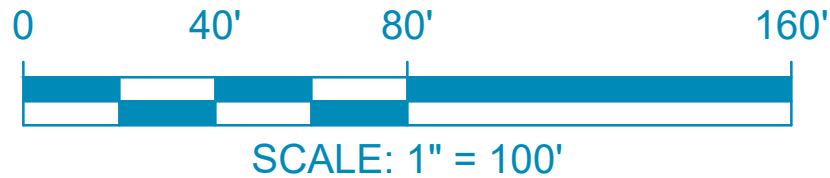
Construct new
sidewalk


Google
Technologies, NMRGIS, U.S. Geological

ata ©2023 100 ft

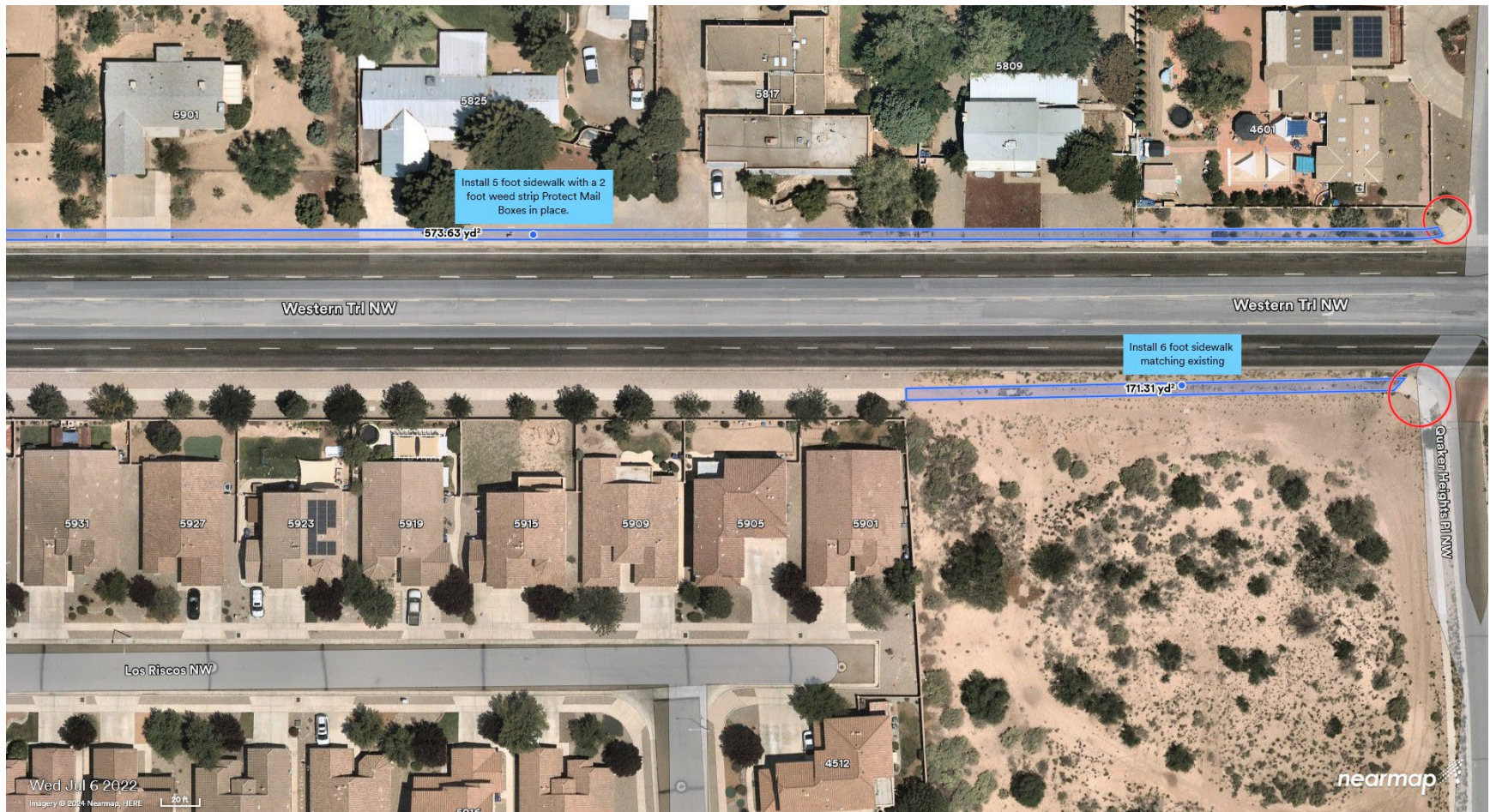


- SURVEY NOTES**
1. THIS IS NOT A BOUNDARY SURVEY. APPARENT PROPERTY LINES AND FOUND CORNERS AS MAY BE SHOWN HEREIN ARE FOR ORIENTATION PURPOSE ONLY.
 2. FIELD WORK WAS COMPLETED IN 12/07/2023 USING GPS VIA THE LIECA SMARTNET REAL TIME GEODETIC NETWORK.
 3. THE HORIZONTAL DATUM IS BASED ON NAD83.
 4. THIS MAPPING DATA SET WAS COLLECTED TO SUPPORT A HORIZONTAL SCALE OF SCALE: 1" = 100'.
 5. THE CENTER OF THE PROJECT CAN BE LOCATED BY GEOGRAPHIC COORDINATES 35° 08' 05"N, 106° 42' 21"W.

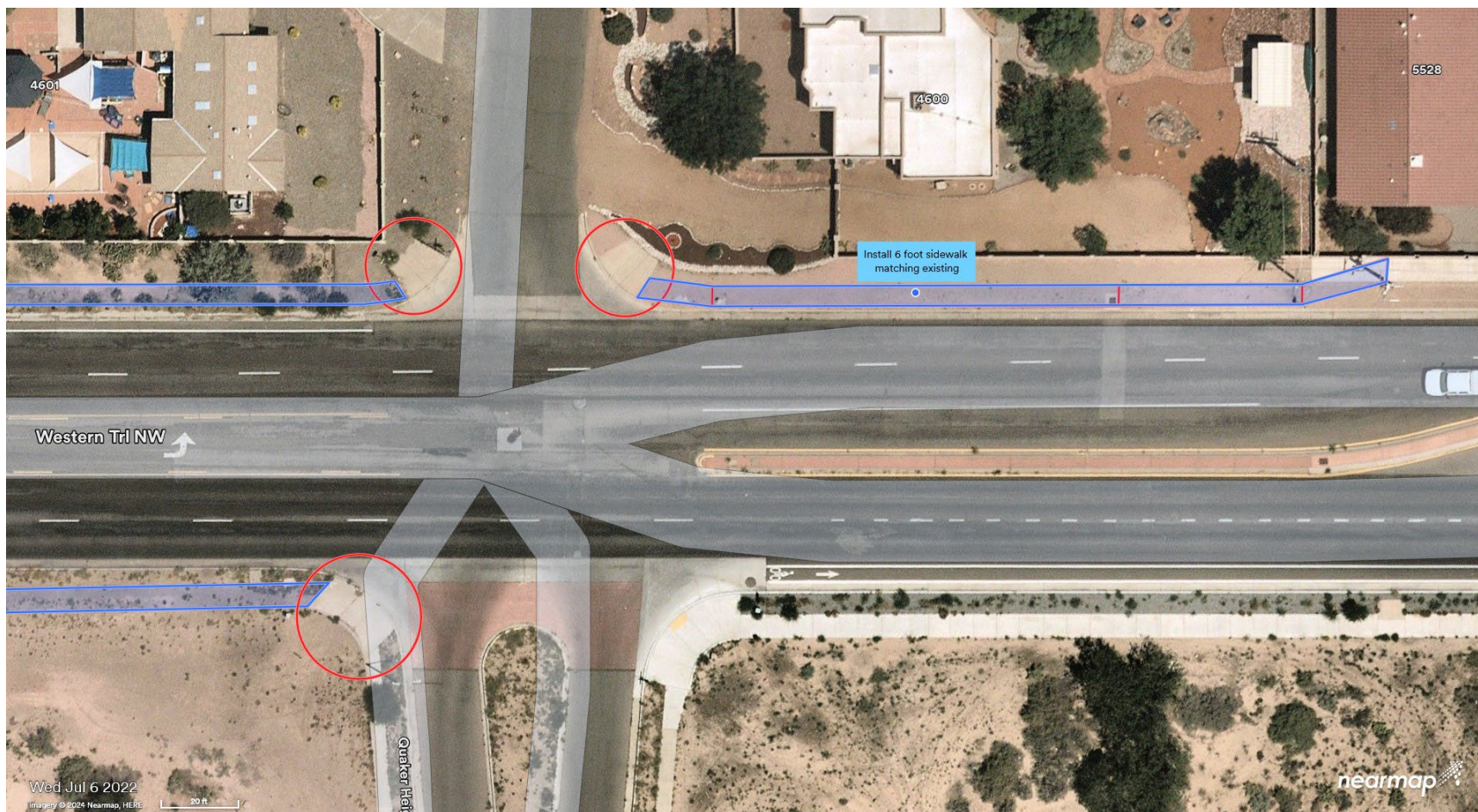


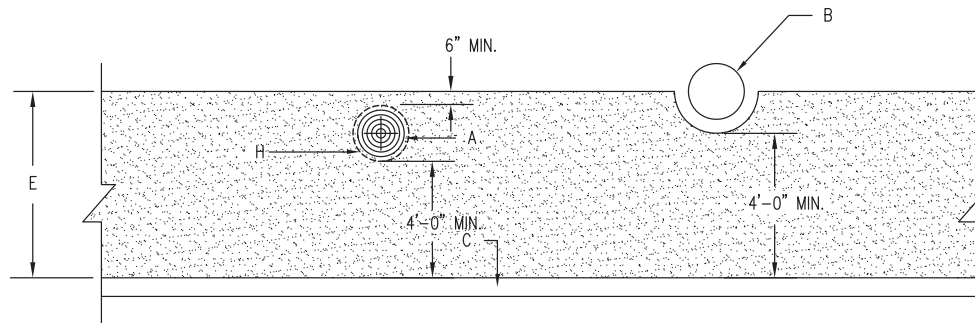
| | | | |
|---|---|---------|--|
|  | DEPARTMENT OF MUNICIPAL DEVELOPMENT CONSTRUCTION SERVICES / SURVEY SECTION | | |
| | WESTERN TRAIL NW | | |
| DRAWN BY: DC | DWG NO. 1 OF 1 | REV | |
| APPROVED BY: LR | FIELD WORK PERFORMED 12/07/2023 | SHEET 1 | |



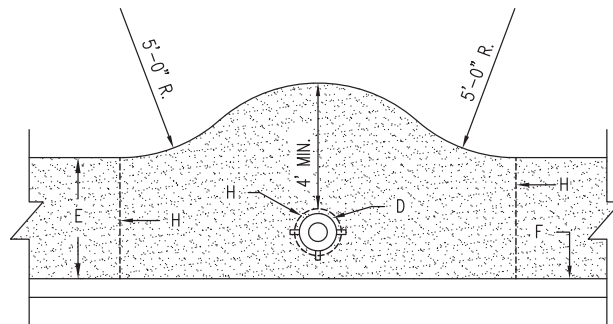




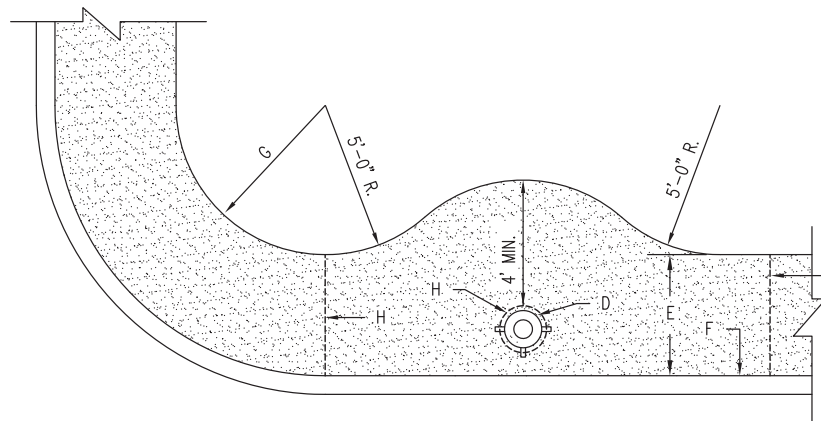




UTILITY POLE OR TREE OBSTRUCTION



ON STRAIGHT STRETCH



AT CURB RETURN

4'-0" SIDEWALK ENCLOSING A FIRE HYDRANT

GENERAL NOTES

1. FOR SIDEWALK CONSTRUCTION DETAILS, SEE CONSTRUCTION NOTE B, DWG. 2430.
2. USE WHERE AVAILABLE R/W EXISTS, TO BE DETERMINED BY THE ENGINEER.
3. PROVIDE 1/2" PREFORMED EXPANSION JOINT MATERIAL AROUND ALL POWER POLES AND FIRE HYDRANTS WITHIN THE SIDEWALK AREA.
4. PUBLIC SIDEWALK EASEMENT MAY BE REQUIRED IN RESTRICTED ROW SITUATIONS.

CONSTRUCTION NOTES

- A. UTILITY POLE OR OTHER OBSTRUCTION.
- B. LEAVE 6" CLEARANCE ALL AROUND TREE TRUNK.
- C. TOP OF CURB.
- D. FIRE HYDRANT.
- E. 5' MIN. SIDEWALK WIDTH.
- F. BACK OF CURB.
- G. EXTERIOR EDGE OF SIDEWALK TO BE TANGENT TO ARCS.
- H. 1/2" EXPANSION JOINT MATERIAL.

| REVISIONS | CITY OF ALBUQUERQUE |
|-----------|-----------------------|
| | PAVING |
| | SIDEWALK OBSTRUCTIONS |
| | DWG. 2431 |
| | JUNE 2019 |