



GOLF COURSE ROAD, NW



BUS STOP SHELTER INSTALLATION

Transit On-Call Work Order 6319.35

Address/Location: Golf Course Road, NW & Ellison Drive, NW

INDEX TO DRAWINGS

<u>Description</u>	<u>Page</u>
Shelter Concept	1
Location-Scope New Pad	2
Shelter Plan	3
Location Scope Existing Pad	4

*Shelter
Location*



SCOPE OF WORK:

- A** Transport and Install TLC Bus Shelter Located in Storage at the Daytona Transit Facility to the location illustrated. Align parallel with roadway.
- B** Excavate catchment area for new bus shelter structure, waste receptacle and footings.
- C** Attempt to avoid disturbance of existing landscaping as much as possible.
- D** Provide new concrete pad and footings for bus shelter structure per City standard drawings.
- E** Install shelter with integral bench, and waste receptacle and fasten to concrete as specified by shelter manufacturer.
- F** Install new solar panel , lighting system and grounding as per code.
- G** Acquire all necessary permits including any traffic barricades as necessary.
- H** Restore existing grade between sidewalk and curb.
- J** Notify Transit Project Manager of any inspections or traffic barrier activities.
- K** Relocate existing bus stop sign to steel sleeve break-away imbed in new concrete pad.
- L** Relocate existing Bikeway signage to north side of sidewalk tangent with sidewalk along Coors.

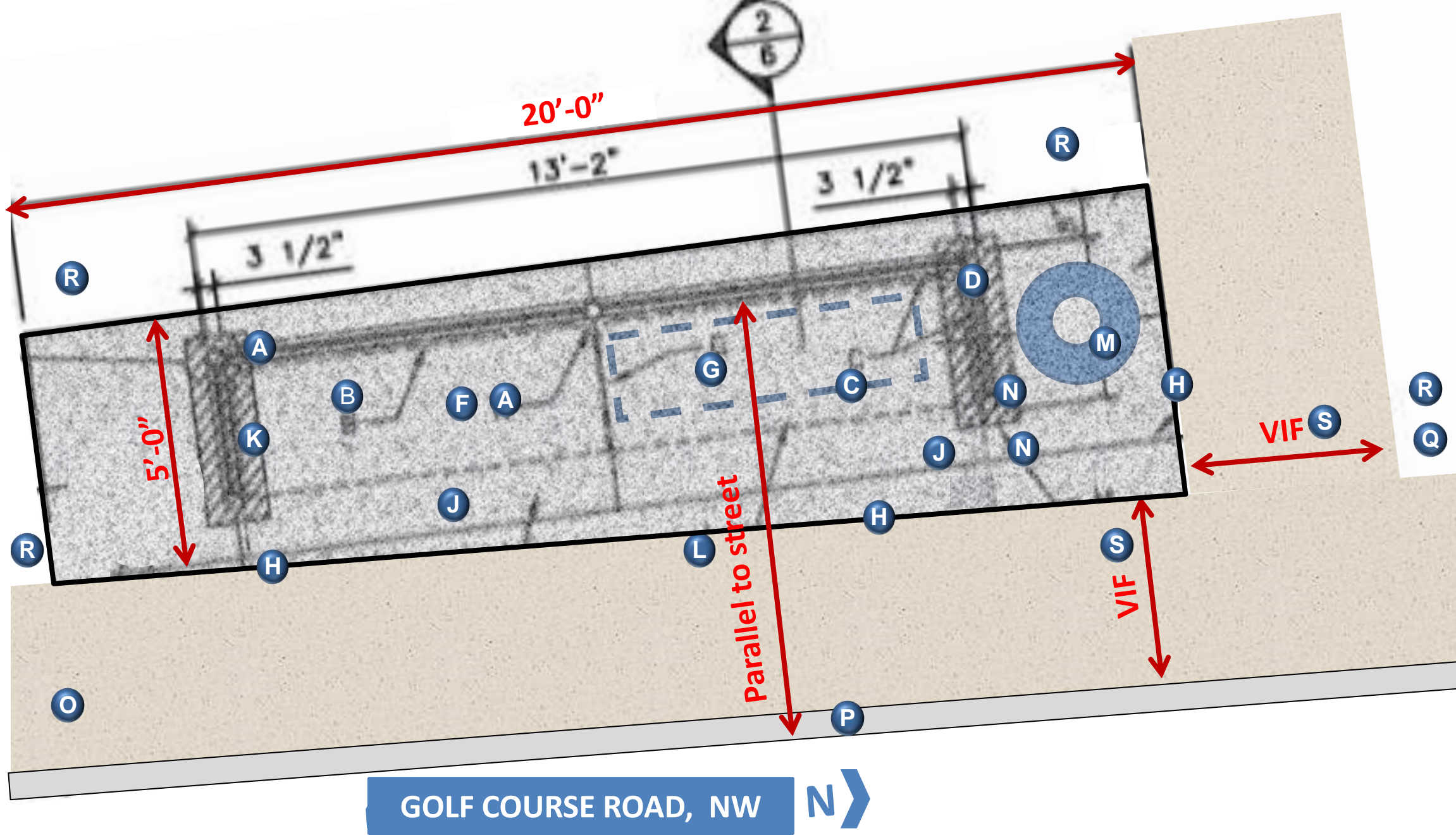


BUS STOP SHELTER INSTALLATION

Transit On-Call Work Order 6319.02

Address/Location: Golf Course Road, NW & Ellison Drive, NW

*Location
Scope*



CONSTRUCTION NOTES:

- A** FRAME 3 1/2" STANDARD STEEL PIPE, COPED WELD PIPE CHASSIS.
- B** 2 1/2" STANDARD STEEL PIPE COPED, WELD PIPE TO CHASSIS.
- C** 16 GA. PERFORATED STEEL PANEL, RIVETS OR TAMPER PROOF SCREWS AT 8" o.c. FASTENED TO 1/2" x 1" CHANNEL.
- D** STEEL ANCHOR PLATE W 1/2" DIAMETER RED HEAD ANCHOR BOLT, 1
- E** ROOF: HIGH STRENGTH F.R.P. SMOOTH SURFACE TOP AND BOTTOM, FASTEN TO 1/2"x2" CHANNEL WITH RIVETS OR TEMPER PROOF SCREWS AT 8" o.c.
- F** FLUORESCENT DC LIGHT WITH PHOTO VOLTAC SOLAR COLLECTOR AND BATTERY IN VENT SECURITY HOUSING LACOR MODEL NO. SR100 OR EQUAL. LACOR STREET SCAPES, PHOENIX, ARIZONA, (602) 371-3110.
- G** BENCH (SEE DETAILS ON ST. DWG. 2535.09).
- H** 1/2" EXPANSION JOINT.
- J** 4" SLAB WITH 4X4 - W4.0xW4.0 WWF, USE 10" DEEP TURNDOWN AT PERIMETER, BROOM FINISH.
- K** 1/2" STEEL BRACKET, WELD TO PIPE FRAME, GRIND SMOOTH.
- L** 16 GA. SHEET METAL PANEL (BEYOND). ATTACH WITH RIVETS OR TAMPER PROOF SCREWS (8 PER PANEL).
- M** Install refuse container Provided by Transit and provide new concrete pad and footings
- N** Provide and Install TLC Bus Shelter Provided by Transit.
- O** Relocate Existing Bus Stop Sign with Steel Sleeve Cast into concrete pad.
- P** Existing Standing Curb and Gutter.
- Q** Relocate Bike Lane Sign and pole north of sidewalk.
- R** Existing Earth Planter Strip. Remove plant material if necessary and inure that irrigation is in operation.
- S** Existing 5ft. Concrete Sidewalk verify dimension in field



BUS STOP SHELTER INSTALLATION

Transit On-Call Work Order 6319.35

Address/Location: Golf Course Road, NW & Ellison Drive, NW

*Shelter
Plan*



SCOPE OF WORK:

- A** Benches will Be removed by Transit Bus Shelter Crew.
- B** Bus Shelter Crew will eliminate painted stop markings.
- C** Attempt to avoid disturbance of existing landscaping as much as possible.
- D** Remove and reinstall bike path sign and pole to north of sidewalk.
- E** Relocate bus stop pole and signage to new location as illustrated in sheet 3 of this document.



BUS STOP SHELTER INSTALLATION

Transit On-Call Work Order 6319.35

Address/Location: Golf Course Road, NW & Ellison Drive, NW

*Location
Scope*