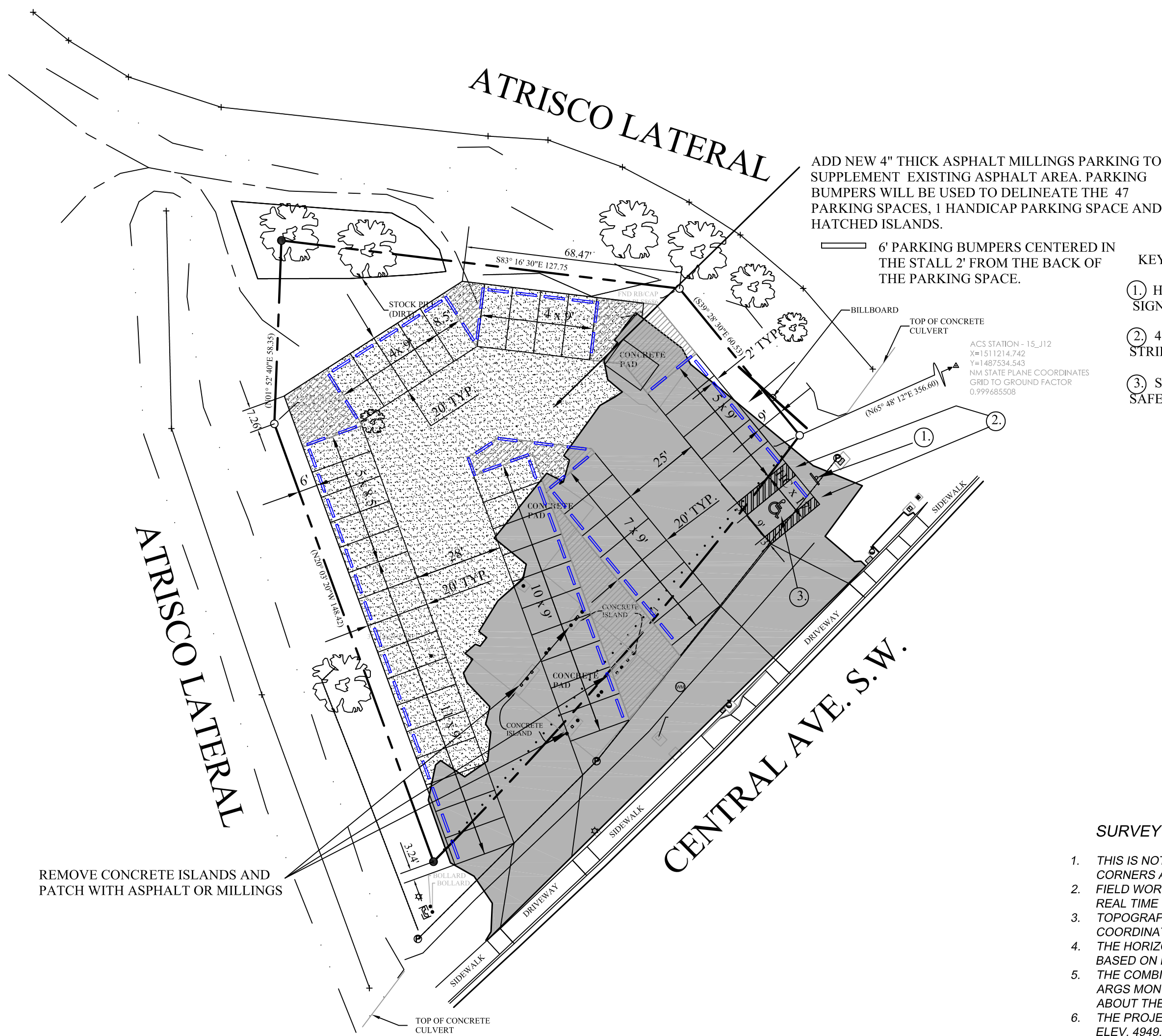


11X17 NOT TO SCALE

Curve Table					
Curve #	Length	Radius	Delta	Chord Direction	Chord Length
C1	179.17	1342.39		N40° 32' 19" E	179.03



KEYED NOTES:

1. HANDICAP PARKING SIGN R7-8 12"X18"
2. 4" OSHA SAFETY BLUE STRIPE, 45°, 30" O.C., TYP.
3. SYMBOL TO BE OSHA SAFETY BLUE / WHITE

LEGEND	
	AGS MONUMENT
	POWER POLE
	TRAFFIC SIGNAL
	TRANSFORMER
	ELECTRIC BOX
	WATER METER
	STREET LIGHT
	FENCE
	OVERHEAD LINE
	CENTER LINE OF DIRT ROAD
	DRAIN LINE
	TOP OF SLOPE
	TREE
	PIPE
	8-1/2" VAULT
	TELEPHONE BOOTH
	60D NAIL

	EXISTING PAVEMENT TO REMAIN
	4" THICK ASPHALT MILLINGS
	ISLANDS DELINEATED WITH PARKING BUMPERS

SURVEY NOTES:

1. THIS IS NOT A BOUNDARY SURVEY. APPARENT PROPERTY LINES AND FOUND CORNERS AS MAY BE SHOWN HEREIN ARE FOR ORIENTATION PURPOSE ONLY.
2. FIELD WORK WAS COMPLETED IN MARCH 2015 USING GPS VIA THE ALBUQUERQUE REAL TIME GEODETIC NETWORK (ARTGN).
3. TOPOGRAPHIC MAP IS BASED ON MODIFIED NEW MEXICO STATE PLANE COORDINATE SYSTEM, CENTRAL ZONE (3002) US SURVEY FEET.
4. THE HORIZONTAL DATUM IS BASED ON NAD83 AND THE VERTICAL DATUM IS BASED ON NAVD88.
5. THE COMBINED SCALE FACTOR FOR THES PROJECT IS 0.999685401 BASED ON ARGS MONUMENT 15_J12 AND 14_J12 (AVERAGE CSF). THE DATA WAS SCALED ABOUT THE NMSP CENTRAL PROJECTION ORIGIN: N=0.000, E=0.000 US. FT.
6. THE PROJECT BENCHMARK IS ARGS CONTROL MONUMENT STAMPED 19_K12A ELEV. 4949.199
7. THIS MAPPING DATA SET WAS COLLECTED TO SUPPORT A HORIZONTAL SCALE OF 1"=30' AND A VERTICAL CONTOUR OF 0.50 US FT.
8. THE CENTER OF THE PROJECT CAN BE LOCATED BY GEOGRAPHIC COORDINATES 35° 05' 14" N, 106° 40' 58" W.
9. ALL ELEVATION SHOWN ARE GROUND ELEVATION
10. ALL BEARING AND DISTANCES SHOWN ARE RECORD AND BASED ON LEGAL DESCRIPTION FILED WITH BERNALILLO COUNTY CLERK. RECORDED ON 12/08/2003, IN BOOK-A69 PG-8428.

DEPARTMENT OF MUNICIPAL DEVELOPMENT CONSTRUCTION SERVICES / SURVEY SECTION	
CENTRAL AVE. AND SUNSET RD. S.W.	
DRAWN BY: AP	OWG NO. 1 OF 2 PLAN VIEW
APPROVED BY: CPA	FIELD WORK PERFORMED 3/18/2015
	SHEET 2