

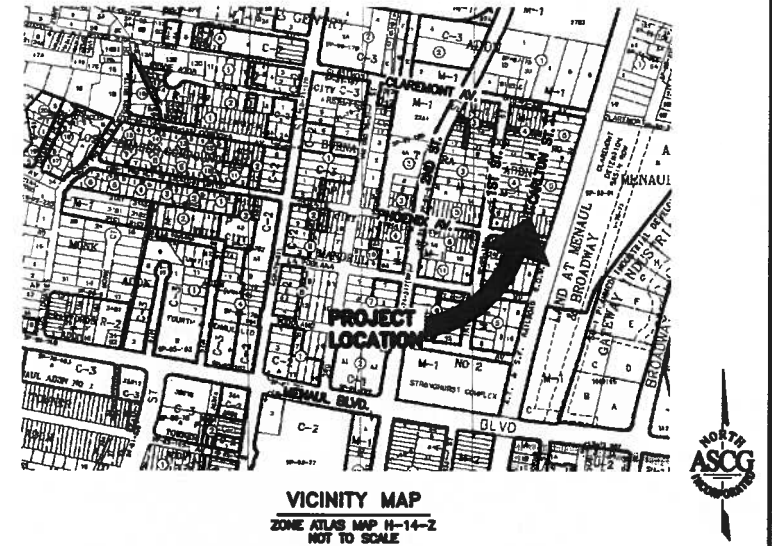


CITY OF ALBUQUERQUE
CONSTRUCTION PLANS
FOR
CARLTON STREET
STORM DRAIN EXTENSION
COA PROJECT 7396.03

JUNE 2009

INDEX OF DRAWINGS

- 1 COVER, VICINITY MAP, INDEX OF DRAWINGS
- 2 GENERAL NOTES, ABBREVIATIONS AND LEGEND
- 3 STORM DRAIN PLAN & PROFILE
- 4 WATERLINE RELOCATION AND SHUT-OFF DETAIL



UTILITY CONTACTS

MERRILL, STEVE	OFFICE PHONE: (505) 968-2200 OFFICE FAX: (505) 345-6559 STEVE.MERRILL@XSPEDUS.COM	XSPEDUS MANAGEMENT CO. OUTSIDE PLANT SPECIALIST 505 MARQUETTE NW STE 1005 ALBUQUERQUE, NM 87109
BLAUKAMP, ROLAND (ROL)	OFFICE PHONE: (505) 241-3808 CELL PHONE: (505) 497-1518 OFFICE FAX: (505) 241-0559 RBLAUKAMP@PNNL.COM	PNM ELECTRIC 4201 EDITH BLVD. NE ALBUQUERQUE, NM 87107
CROWEL, DAVID	OFFICE PHONE: (505) 842-2911 OFFICE FAX: (505) 842-3980 DCROWEL@ATT.COM	AT&T RESOURCE SUPERVISOR 111 3RD STREET NW ALBUQUERQUE, NM 87103
DARNELL, ANDY	OFFICE PHONE: (505) 348-4470 OFFICE FAX: (505) 348-4481 ANDY.DARNELL@NM.GOV	MCI WORLDWIDE OPERATIONS MANAGER 6001 MIDWAY PARK NE ALBUQUERQUE, NM 87109
BOUSKA, KELLY	OFFICE PHONE: (505) 241-7752 OFFICE FAX: (505) 241-7740 KBOUSKA@PNNL.COM	PNM GAS CO. 4825 EDITH BLVD. NE ALBUQUERQUE, NM 87107
ERICKSON, RITA	OFFICE PHONE: (505) 781-8235 OFFICE FAX: (505) 781-0599 RITA.ERICKSON@CABLE.COMCAST.COM	COMCAST PLANNING AND DESIGN SUPERVISOR 4811 MONTBEL PLACE NE ALBUQUERQUE, NM 87107
HARRISON, ROYAL	OFFICE PHONE: (505) 838-7339 OFFICE FAX: (505) 838-7380 ROYAL.HARRISON@TIMEWARNER.COM	TIME WARNER TELECOM PLANT MANAGER 3830 SINGER BLVD. NE SUITE 1000 ALBUQUERQUE, NM 87109
SCHMITZ, DUANE	OFFICE PHONE: (505) 235-8018	CITY OF ALBUQUERQUE STORM DRAIN DIVISION P.O. BOX 1293 ALBUQUERQUE, NM 87103
KELLY, LARRY	OFFICE PHONE: (505) 245-0501 OFFICE FAX: (505) 245-8479 LARRY.KELLY@QWEST.COM	QWEST LONG DISTANCE SR OPERATIONS TECH 400 TUERAS AVE. NW SUITE 570 ALBUQUERQUE, NM 87102
MUELLER, RICK	OFFICE PHONE: (505) 244-5181 OFFICE FAX: (505) 244-0284 MOBILE: (505) 238-3329 RDMUELLER@MCLEODUSA.COM	MCLEOD USA SUPERVISOR OF OUTSIDE TECHS 505 MARQUETTE NW (COMPASS BANK) SUITE 1000 ALBUQUERQUE, NM 87102
VELARDE, MICHAEL D.	OFFICE PHONE: (505) 245-8352 OFFICE FAX: (505) 245-8723 MOBILE: (505) 715-8083 PAGER: (505) 381-3817 MICHAEL.VELARDE@QWEST.COM	QWEST MANAGER ENGINEERING NM ENGINEERING/PLANNING 400 TUERAS AVE. NW ROOM 710 ALBUQUERQUE, NM 87102
MONTOLA, ANTHONY	OFFICE PHONE: (505) 788-2713 OFFICE FAX: (505) 788-3829 AMONTOLA@ARROWA.COM	ARROWA SENIOR ENGINEER UTILITIES DEVELOPMENT P.O. BOX 1293 ALBUQUERQUE, NM 87103
WEATHERS, ROGER	OFFICE PHONE: (720) 888-6888 OFFICE FAX: (720) 888-5254 ROGER.WEATHERS@LEVEL3.COM	LEVEL 3 COMMUNICATIONS, LLC 1025 ILLINOIS BLVD BROOMFIELD, CO 80021
BROWN, JOHN	OFFICE PHONE: (505) 243-2153 OFFICE FAX: (505) 314-0800 JOHN@BOGASSETS.COM	BOG ASSETS OPERATIONS MANAGER 505 MARQUETTE AVE. NW SUITE LL-110A ALBUQUERQUE, NM 87102



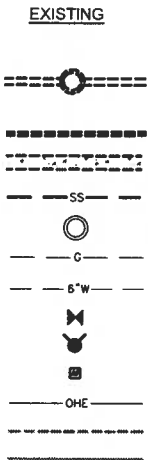
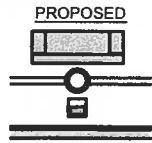
REV.	SHEETS	CITY ENGINEER	DATE	USER DEPARTMENT	DATE	USER DEPARTMENT	DATE
ENGINEERS STAMP & SIGNATURE		APPROVALS		ENGINEER	DATE	*****	
		DRC Chairman				APPROVED FOR CONSTRUCTION	
		Transportation					
		Water/Wastewater					
		Hydrology					
		Parks & Recreation					
CIP						City Engineer _____ Date _____	
City Project No.				7396.03		Sheet 1 of 4	

GENERAL NOTES:

1. ALL WORK DETAILED ON THESE PLANS TO BE PERFORMED, EXCEPT AS OTHERWISE STATED OR PROVIDED HEREON, SHALL BE CONSTRUCTED IN ACCORDANCE WITH THE CITY OF ALBUQUERQUE STANDARD SPECIFICATIONS FOR PUBLIC WORKS CONSTRUCTION - 1986 EDITION THROUGH UPDATE #7, INCLUDING AMENDMENT NO. 1, AND WILL BE REFERRED TO HEREIN AS "STANDARD SPECIFICATIONS".
2. ALL CONSTRUCTION WITHIN CITY RIGHT-OF-WAY OR EASEMENTS MUST BE DONE FROM APPROVED WORK ORDER DOCUMENTS FROM THE CITY.
3. ALL WORK ON THIS PROJECT SHALL BE PERFORMED IN ACCORDANCE WITH APPLICABLE FEDERAL, STATE, AND LOCAL LAWS, ORDINANCES, RULES, AND REGULATIONS CONCERNING CONSTRUCTION SAFETY AND HEALTH.
4. CONTRACTOR AGREES THAT HE SHALL ASSUME THE SOLE AND COMPLETE RESPONSIBILITY FOR THE JOB SITE CONDITIONS DURING THE COURSE OF CONSTRUCTION OF THIS PROJECT, INCLUDING SAFETY OF ALL PERSONS AND PROPERTY. THIS REQUIREMENT SHALL APPLY CONTINUOUSLY AND NOT BE LIMITED TO NORMAL WORKING HOURS. CONTRACTOR SHALL DEFEND, INDEMNIFY, AND HOLD HARMLESS THE OWNER AND ENGINEER FROM ANY AND ALL LIABILITY REAL OR ALLEGED, IN CONNECTION WITH THE PERFORMANCE OF WORK ON THIS PROJECT, EXCEPTING LIABILITY ARISING FROM THE SOLE NEGLIGENCE OF THE OWNER OR ENGINEER.
5. ALL EXCAVATION, TRENCHING AND SHORING ACTIVITIES MUST BE ACCOMPLISHED IN ACCORDANCE WITH OSHA 29CFR 1926.650 SUBPART P, OR CURRENT OSHA STANDARD.
6. AN EXCAVATION/CONSTRUCTION PERMIT WILL BE REQUIRED BEFORE BEGINNING ANY WORK WITHIN CITY RIGHT-OF-WAY.
7. CONTRACTOR SHALL NOTIFY THE ENGINEER NOT LESS THAN SEVEN (7) DAYS PRIOR TO STARTING WORK IN ORDER THAT THE CITY SURVEYOR MAY TAKE NECESSARY MEASURES TO INSURE THE PRESERVATION OF SURVEY MONUMENTS. CONTRACTOR SHALL NOT DISTURB PERMANENT SURVEY MONUMENTS WITHOUT THE CONSENT OF THE CITY SURVEYOR AND SHALL NOTIFY THE CITY SURVEYOR AND BEAR THE EXPENSE OF REPLACING ANY THAT MAY BE DISTURBED WITHOUT PERMISSION. ONLY THE CITY SURVEYOR SHALL REPLACE SURVEY MONUMENTS. WHEN A CHANGE IS MADE IN THE FINISHED ELEVATIONS OF THE PAVEMENT OF ANY ROADWAY IN WHICH A PERMANENT SURVEY MONUMENT IS LOCATED, CONTRACTOR SHALL, AT HIS OWN EXPENSE, ADJUST THE MONUMENT COVER TO THE NEW GRADE UNLESS OTHERWISE SPECIFIED. REFER TO STANDARD SPECIFICATIONS SECTION 4.4.
8. TWO (2) WORKING DAYS PRIOR TO CONSTRUCTION, CONTRACTOR SHALL OBTAIN A BARRICADING PERMIT FROM THE DMD, CONSTRUCTION COORDINATION DIVISION. CONTRACTOR SHALL NOTIFY BARRICADE ENGINEER (924-3400) PRIOR TO OCCUPYING AN INTERSECTION. REFER TO SECTION 19 OF STANDARD SPECIFICATIONS.
9. TWO (2) WORKING DAYS PRIOR TO ANY EXCAVATION, CONTRACTOR MUST CONTACT NEW MEXICO ONE CALL SYSTEM (260-1990) FOR LOCAITON OF EXISTING UTILITIES.
10. CONTRACTOR SHALL ASSIST THE ENGINEER/INSPECTOR IN THE RECORDING OF DATA ON ALL UTILITY LINES AND ACCESSORIES AS REQUIRED BY THE CITY OF ALBUQUERQUE FOR THE PREPARATION OF "AS CONSTRUCTED" DRAWINGS. CONTRACTOR SHALL NOT COVER UTILITY LINES AND ACCESSORIES UNTIL ALL DATA HAS BEEN RECORDED.
11. AT HIS OWN EXPENSE, CONTRACTOR SHALL ASSUME RESPONSIBILITY FOR ANY DAMAGE TO EXISTING PAVEMENT, PAVEMENT MARKINGS, CURB AND GUTTER, HANDICAP RAMPS, AND SIDEWALK DURING CONSTRUCTION APART FROM THOSE SECTIONS INDICATED FOR REMOVAL ON THE PLANS. AND SHALL REPAIR OR REPLACE, PER STANDARD SPECIFICATIONS.
12. ALL STREET STRIPING, ALTERED OF DESTROYED, SHALL BE REPLACED WITH TERMOPLASTIC REFLECTORIZED PAVEMENT MARKINGS BY CONTRACTOR TO SAME LOCATION AS EXISTING, OR AS INDICATED BY THIS PLAN SET.
13. CONTRACTOR SHALL MAINTAIN A GRAFFITI-FREE WORK SITE. CONTRACTOR SHALL PROMPTLY REMOVE ANY AND ALL GRAFFITI FROM EQUIPMENT, WHETHER PERMANENT OR TEMPORARY.
14. CONTRACTOR SHALL BE RESPONSIBLE FOR PROVIDING AND MAINTAINING ALL CONSTRUCTION SIGNING UNTIL THE PROJECT HAS BEEN ACCEPTED BY THE CITY OF ALBUQUERQUE.
15. ALL UTILITIES AND UTILITY SERVICE LINES SHALL BE INSTALLED PRIOR TO PAVING.
16. CONTRACTOR SHALL COORDINATE WITH WATER AUTHORITY (857-8200) SEVEN (7) WORKING DAYS PRIOR TO ANY WORK THAT MAY AFFECT EXISTING WATER AUTHORITY PUBLIC WATER OR SEWER UTILITIES. CONTRACTOR SHALL BE RESPONSIBLE FOR TIMING AND COORDINATION OF WATER SHUTOFF. EXISTING WATER AUTHORITY VALVES TO BE OPERATED BY WATER AUTHORITY PERSONNEL ONLY.
17. SEVEN (7) WORKING DAYS PRIOR TO BEGINNING CONSTRUCTION, CONTRACTOR SHALL SUBMIT TO DMD, CONSTRUCTION COORDINATION DIVISION A DETAILED CONSTRUCTION SCHEDULE.
18. ALL BACKFILL FOR TRENCHES WITHIN THE COA RIGHT-OF-WAY SHALL BE COMPACTED TO A MINIMUM OF 95% MAXIMUM DENSITY PER ASTM D-1557 AND AS DIRECTED BY STANDARD SPECIFICATIONS SECTION 701.14.2 AND STANDARD DRAWING NUMBER 2465.
19. THE JOBSITE, AT THE COMPLETION OF CONSTRUCTION, SHALL BE CLEANED OF ANY DEBRIS OR SPOILS RESULTING FROM THE CONSTRUCTION.
20. IT IS THE CONTRACTOR'S RESPONSIBILITY TO INSPECT THE JOBSITE TO FAMILIARIZE HERSELF / HIMSELF WITH ALL THE EXISTING CONDITIONS THAT COULD AFFECT THE INSTALLATION OF ANY WORK SET FORTH IN THESE PLANS.
21. THE CONTRACTOR SHALL NOT INSTALL ITEMS AS SHOWN ON THE PLANS WHEN IT IS OBVIOUS THAT FIELD CONDITIONS ARE DIFFERENT THAN SHOWN IN THE DESIGN. SUCH CONDITIONS SHOULD BE BROUGHT TO THE ATTENTION. OF THE ENGINEER. IN THE EVENT THE CONTRACTOR DOES NOT NOTIFY THE ENGINEER, THE CONTRACTOR ASSUMES FULL RESPONSIBILITY AND EXPENSE FOR ANY REVISIONS NECESSARY.
22. EXISTING FENCING THAT IS NOT DESIGNATED FOR REMOVAL SHALL NOT BE DISTURBED. ANY FENCING THAT IS DISTURBED OR ALTERED BY THE CONTRACTOR SHALL BE RESTORED TO ITS ORIGINAL CONDITION AT THE CONTRACTOR'S EXPENSE. IF THE CONTRACTOR WOULD LIKE TO REMOVE FENCING TO FACILITATE CONSTRUCTION OPERATIONS, THIS MAY BE DONE WITH THE OWNERS PERMISSION, AND THE CONTRACTOR SHALL RESTORE THE FENCE TO ITS ORIGINAL CONDITION PRIOR TO THE CLOSE OF THE PROJECT. CONTRACTOR IS RESPONSIBLE TO THE SECURITY OF THE SITE UNTIL THE FENCE IS REPLACED.

23. THE ENGINEER OF DESIGN SHALL NOT BE RESPONSIBLE FOR CONTRACTOR'S FAILURE TO CARRY OUT THE CONSTRUCTION WORK IN ACCORDANCE WITH CONTRACT DOCUMENTS, NOR SHALL BE REQUIRED TO SUPERVISE THE CONDUCT OF THE WORK OR THE CONSTRUCTION PROCEDURES AND SAFETY PROCEDURES FOLLOWED BY THE CONTRACTOR OR SUBCONTRACTOR OR THEIR RESPECTIVE EMPLOYEES OR BY ANY OTHER PERSON AT THE JOBSITE OTHER THAN THAT OF THE ENGINEER'S EMPLOYEES.
24. THE CONTRACTOR IS SPECIFICALLY CAUTIONED THAT THE LOCATION AND / OR ELEVATION OF EXISTING UTILITIES AS SHOWN ON THESE PLANS ARE BASED ON AS-BUILT DRAWINGS AND, WHERE POSSIBLE, MEASUREMENTS TAKEN IN THE FIELD. THE INFORMATION IS NOT TO BE RELIED UPON AS BEING EXACT OR COMPLETE. THE CONTRACTOR SHALL CONTACT HE APPROPRIATE UTILITY COMPANY AT LEAST 48 HOURS BEFORE ANY EXCAVATION TO REQUEST EXACT FIELD LOCATION OF UTILITIES. IT SHALL BE THE RESPONSIBILITY OF THE CONTRACTOR TO RELOCATE ALL EXISTING UTILITIES WHICH CONFLICT WITH THE PROPOSED IMPROVEMENTS SHOWN ON THE PLANS.
25. IF ANY UTILITY LINES, PIPELINES, OR UNDERGROUND UTILITY LINES ARE SHOWN ON THESE DRAWINGS, THEY ARE SHOWN IN APPROXIMATE MANNER ONLY, AND SUCH LINES MAY EXIST WHERE NONE ARE SHOWN. IF ANY SUCH EXISTING LINES ARE SHOWN, THE LOCATION IS BASED UPON INFORMATION PROVIDE TO THE ENGINEER BY OTHERS, AND THE INFORMATION MAY BE INCOMPLETE. OR MAY BE OBSOLETE BY THE TIME CONSTRUCTION COMMENCES. THE CONTRACTOR SHALL VERIFY THE LOCATION OF ANY UTILITY LINE, PIPELINE OR UNDERGROUND UTILITY LINE IN OR NEAR THE AREA OF THE WORK.
26. THE CONTRACTOR SHALL CONFORM TO ALL CITY, COUNTY, STATE AND FEDERAL DUST AND EROSION CONTROL REGULATIONS. THE CONTRACTOR SHALL PREPARE AND OBTAIN ANY NECESSARY DUST OR EROSION CONTROL PERMITS FROM REGULATORY AGENCIES.
27. ALL WASTE PRODUCTS FROM THE CONSTRUCTION SITE, INCLUDING ITEMS DESIGNED FOR REMOVAL, CONSTRUCTION WASTE, CONSTRUCTION EQUIPMENT WASTE PRODUCTS (OIL, GAS, TIRES, ETC.), GARBAGE, GRUBBING, EXCESS CUT MATERIAL, VEGETATIVE DEBRIS, ETC. SHALL BE APPROPRIATELY DISPOSED OF OFF-SITE AT NO ADDITIONAL COST TO THE OWNER. IT SHALL BE THE CONTRACTOR'S RESPONSIBILITY TO OBTAIN ANY PERMITS REQUIRED FOR HAUL OR DISPOSE WASTE PRODUCTS. IT SHALL BE THE CONTRACTOR'S RESPONSIBILITY TO ENSURE THAT THE WASTE DISPOSAL SITE COMPLIES WITH GOVERNMENT REGULATIONS REGARDING THE ENVIRONMENT, ENDANGERED SPECIES, AND ARCHAEOLOGICAL RESOURCES.
28. THE CONTRACTOR SHALL BE RESPONSIBLE FOR THE CLEAN-UP AND REPORTING OF SPILLS OF HAZARDOUS MATERIALS ASSOCIATED WITH THE CONSTRUCTION SITE. HAZARDOUS MATERIALS INCLUDE GASOLINE, DIESEL FUEL, MOTOR OIL, SOLVENTS, CHEMICALS, PAINTS, ETC. WHICH MAY BE A THREAT TO THE ENVIRONMENT. THE CONTRACTOR SHALL REPORT THE DISCOVERY OF PAST OR PRESENT SPILLS TO THE APPROPRIATE COUNTY ENVIRONMENTAL DEPARTMENT.
29. PRIOR TO CONSTRUCTION, EXCAVATE AND VERIFY THE HORIZONTAL AND VERTICAL LOCATIONS OF ALL OBSTRUCTIONS. SHOULD A CONFLICT EXIST, NOTIFY THE ENGINEER SO THAT THE CONFLICT CAN BE RESOLVED WITH A MINIMUM AMOUNT OF DELAY.
30. EXERCISE DUE CARE TO AVOID DISTURBING EXISTING UNDERGROUND UTILITIES.
31. PLACE EXCAVATED MATERIALS AS APPROVED BY THE ENGINEER OR PROJECT ADMINISTRATOR.
32. WHERE TRENCHING EXPOSES EXISTING UTILITY LINES, THE CONTRACTOR IS RESPONSIBLE FOR SUPPORTING THE LINE DURING CONSTRUCTION AND ASSURE THAT IT IS BACKFILLED AND COMPACTED IN ACCORDANCE WITH THE STANDARD SPECIFICATIONS.
33. AREAS DISTURBED DURING CONSTRUCTION SHALL BE RETURNED TO ORIGINAL CONDITION INCLUDING LANDSCAPING AS APPLICABLE. THIS COST SHALL BE INCIDENTAL TO THE WORK.
34. MINOR ADJUSTMENTS TO HORIZONTAL AND VERTICAL LOCATIONS OF IMPROVEMENTS AND RELATED COMPONENTS IS CONSIDERED INCIDENTAL TO THE WORK.
35. RCP SHALL BE INSTALLED SO THAT THE JOINT GAP AT THE HOME POSITION SHALL CONFORM TO THE APPROVED MANUFACTURER'S RECOMMENDATIONS. MANUFACTURER'S RECOMMENDED JOINT GAP TOLERANCES FOR EACH PIPE SIZE AND TYPE SHALL BE GROUTED UNLESS DIRECTED BY THE ENGINEER AFTER CITY APPROVAL.

LEGEND



DESCRIPTION

DRIVEWAY/ DRIVEPAD

STORM DRAIN W/ MANHOLE

STORM DRAIN INLET

CURB AND GUTTER

SIDEWALK

SANITARY SEWER

SANITARY SEWER MANHOLE

GAS LINE

WATER LINE

WATER LINE VALVE

FIRE HYDRANT

WATER METER

OVERHEAD ELECTRIC

CONTOUR MAJOR

CONTOUR MINOR

PROPERTY ADDRESS

ABBREVIATIONS

CL or CL	CENTERLINE
EX	EXISTING
MAX	MAXIMUM
MIN	MINIMUM
TYP	TYPICAL
INV	INVERT
EL	ELEVATION
EP	END PROJECT
BP	BEGIN PROJECT
MH	MANHOLE

SURVEY NOTES:

1. THIS IS NOT A BOUNDARY SURVEY. APPARENT PROPERTY INFORMATION IS SHOWN FOR OR IENTATION PURPOSES ONLY.
2. BEARINGS ARE BASED UPON G.P.S. OBSERVATIONS OF THE FOLLOWING A.C.S. MONUMENTS:
NM-47-10
7-H13
CANDELARIA
3. ELEVATIONS ARE BASED UPON G.P.S. OBSERVATIONS OF THE FOLLOWING A.C.S. MONUMENTS:
NM-47-10
7-H13
CANDELARIA
A-438
11-H15

PUBLISHED A.C.S. MONUMENT INFORMATION (NEW MEXICO STATE PLANE CENTRAL ZONE, NAD 83, NAVD 1988)					
MONUMENT	GRID NORTHING	GRID EASTING	ORTHOMETRIC HEIGHT	G-G FACTOR	DELTA ALPHA
CANDELARIA	1,497,691.3000	1,528,901.0700	5090.8460	0.99987407	-0°12'52.18"
7-H13	1,495,777.8370	1,513,953.4420	4964.3640	0.99988476	-0°14'35.56"
NM-47-10	1,500,810.2080	1,523,633.4880	4970.2520	0.99968177	-0°13'28.96"
11-H15	-	-	5015.4970	-	-
A-438	-	-	4975.3500	-	-

LOCAL CONTROL POINTS				
POINT	NORTHING	EASTING	ELEVATION	DESCRIPTION
CP - 1	1,523,393.46	1,497,230.28	4,971.33	PK NAIL IN CONCRETE
CP - 2	1,523,280.81	1,496,838.12	4,970.39	PK NAIL IN ASPHALT
CP - 3	1,523,337.25	1,497,091.78	4,971.47	PK NAIL IN CONCRETE
CP - 4	1,523,420.45	1,497,403.96	4,971.47	PK NAIL IN CONCRETE

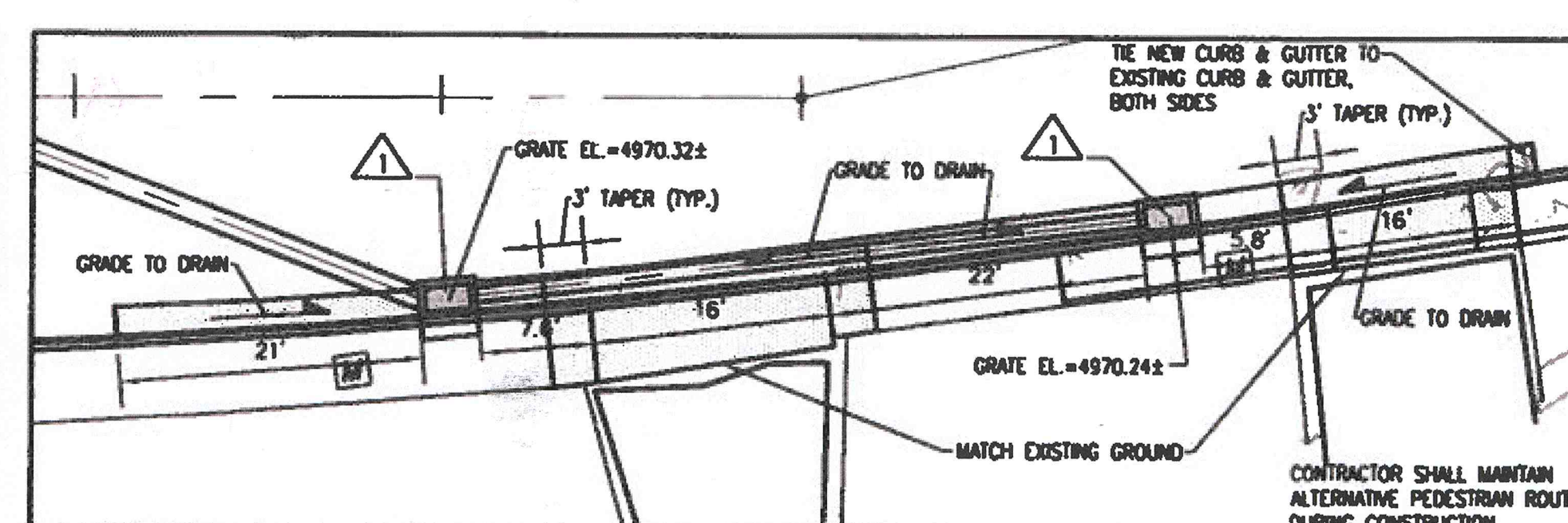
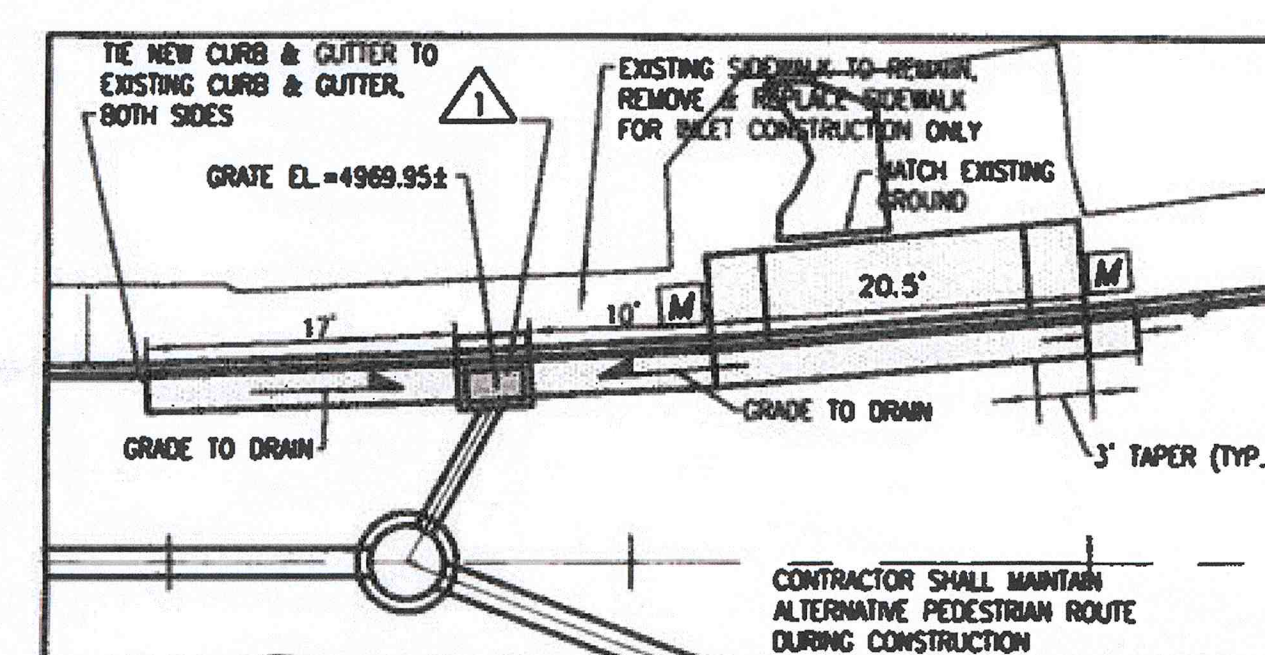
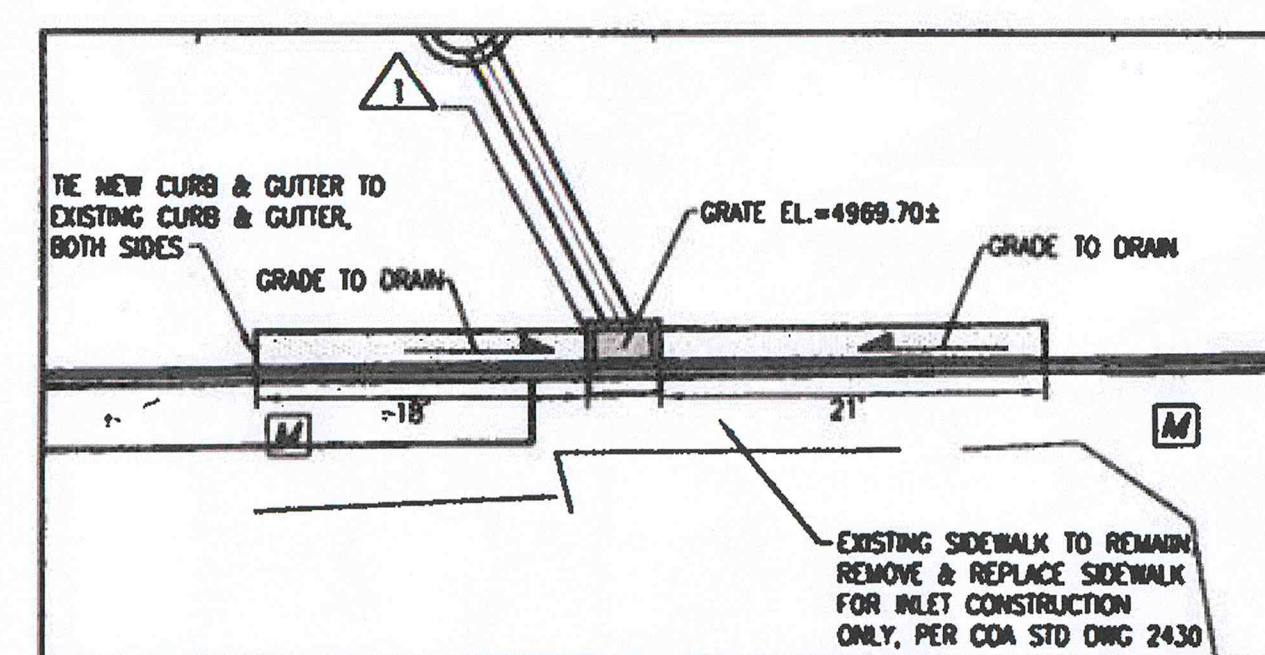
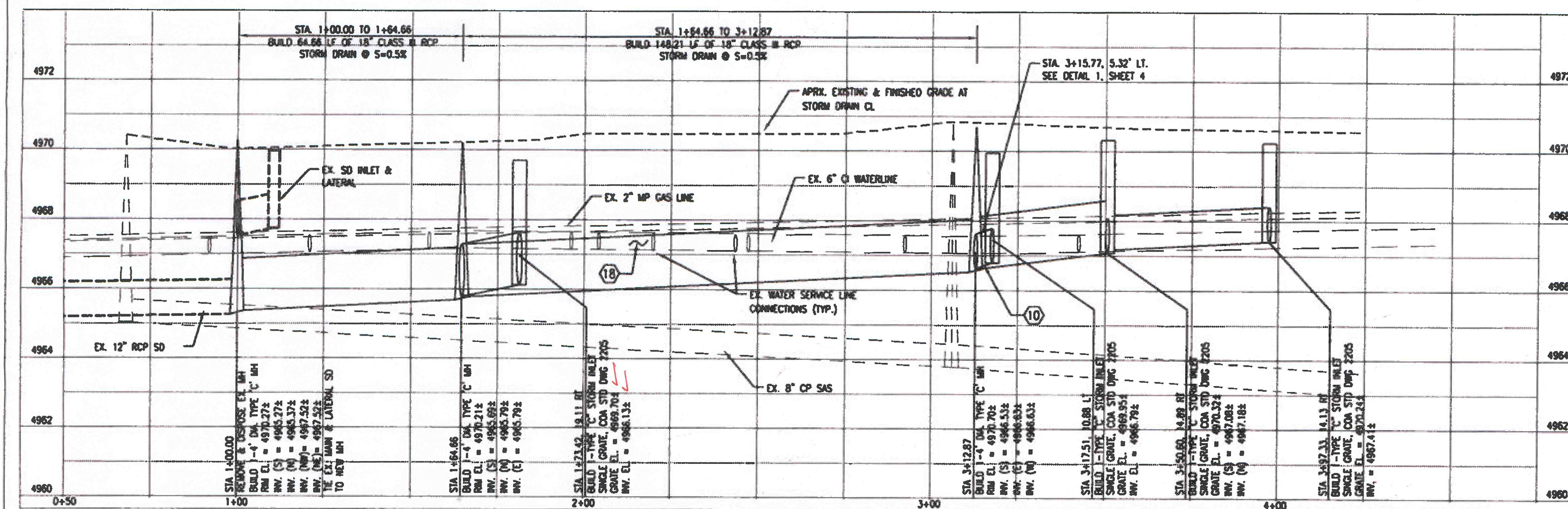
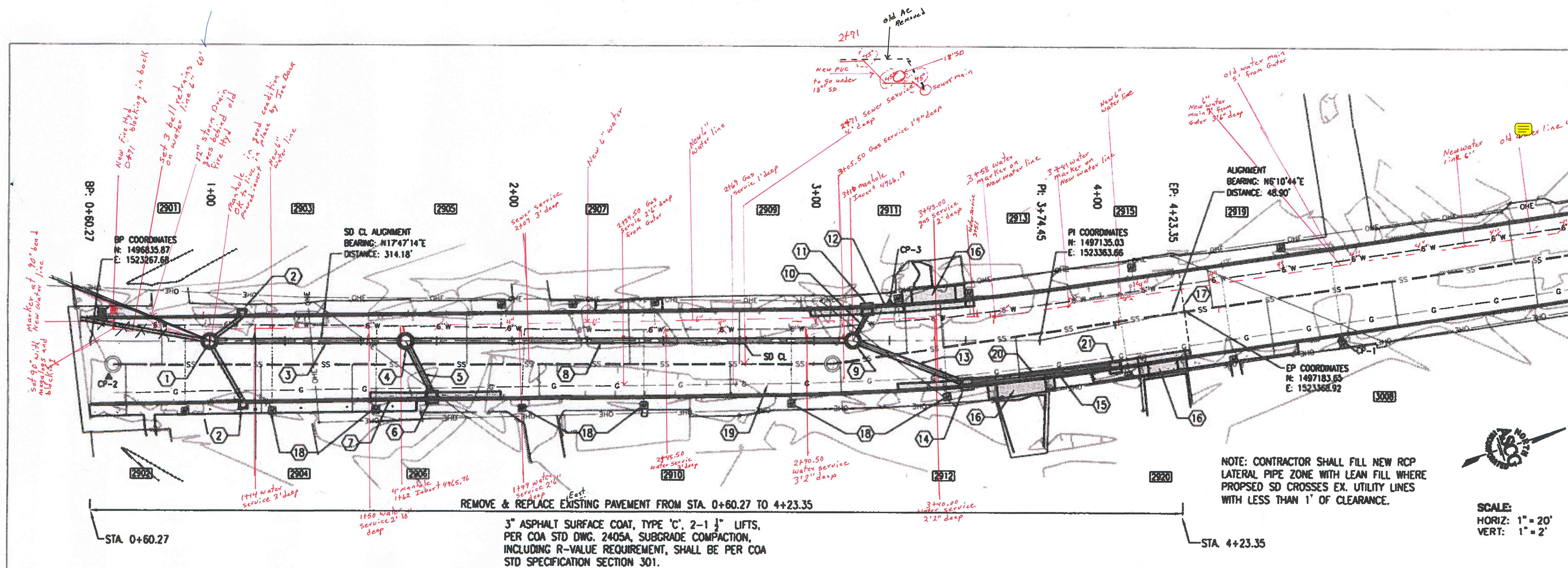
ASCG
INCORPORATED

ENGINEERS • ARCHITECTS • SURVEYORS • PLANNERS

6501 AMERICAS PARKWAY, N.E., SUITE 400
ALBUQUERQUE, NEW MEXICO 87110-5372
PHONE 505.247.0294 • FAX 505.242.4845

AS BUILT INFORMATION		BENCH MARKS		SURVEY INFORMATION		ENGINEER'S SEAL	
CONTRACTOR	DATE	NO.	DATE	NO.	DATE	NO.	DATE
INSPECTOR	DATE	NO.	DATE	NO.	DATE	NO.	DATE
FIELD	DATE	NO.	DATE	NO.	DATE	NO.	DATE
RECORDED BY	DATE	NO.	DATE	NO.	DATE	NO.	DATE
CHECKED BY	DATE	NO.	DATE	NO.	DATE	NO.	DATE
MICRO-FILM INFORMATION		RECORDED BY		DATE		NO.	

CITY OF ALBUQUERQUE PUBLIC WORKS DEPARTMENT			
TITLE: GENERAL NOTES, ABBREVIATIONS AND LEGEND			
Design Review Committee	City Engineer Approval	Mo./Day/Yr.	Mo./Day/Yr.
City Project No.	Zone Map No.	Sheet	Of
7398.03	H - 14 - Z	2	4




GENERAL NOTES

1. THE CONTRACTOR SHALL FIELD VERIFY ALL EXISTING UTILITY LOCATIONS (INCLUDING SERVICE LINE CONNECTIONS) AND NOTIFY THE ENGINEER IMMEDIATELY OF ANY DISCREPANCIES. THE HORIZONTAL AND VERTICAL LOCATIONS OF THE EXISTING WATERLINE, GAS LINE, AND SERVICE LINES SHOWN ON THIS PLAN ARE APPROXIMATE.

2. THE CONTRACTOR IS RESPONSIBLE FOR REPAIR AND/OR REPLACEMENT OF ALL EXISTING UTILITY LINES.

STORM DRAINAGE NOTES 

1. CONTRACTOR SHALL FIELD ADJUST VERTICAL LOCATION OF PROPOSED STORM INLETS AND CURB & GUTTER SLOPES BASED ON EXISTING CONDITIONS TO ACHIEVE SUMP CONDITIONS FOR ALL STORM INLETS. GRATE ELEVATIONS SHOWN ARE APPROXIMATE.

KEYED NOTES 

1. REMOVE & REPLACE EXISTING MH. BUILD 1-4' DIA. TYPE "C" MH PER COA STD DWG. 2101. TIE TO EX. 12" RCP SD & RCP LATERALS.
N: 1496873.70
E: 1523279.82

2. EXISTING STORM INLETS AND LATERALS TO REMAIN.

3. BUILD 64.66 LF OF 18" CLASS III RCP STORM DRAIN

4. BUILD 1-4' DIA. TYPE "C" MH PER COA STD DWG. 2101.
N: 1496935.27
E: 1523299.57

5. BUILD 19.14 LF OF 18" CLASS III RCP STORM DRAIN, @ S=2.0%

6. STA. 1+73.42, 19.11 RT (@ FLOW LINE)
BUILD 1-TYPE "C" STORM INLET PER COA STD DWG. 2205.
STORM INLET GRATE PER COA STD DWG. 2220.
GRATE EL. = 4969.70±
INV. = 4966.13
SEE DETAIL 'A' THIS SHEET.

7. REMOVE & REPLACE EX. CURB & GUTTER. BUILD NEW STD. CURB & GUTTER PER COA STD DWG. 2415A. SEE DETAIL 'A' THIS SHEET.

8. BUILD 148.21 LF OF 18" CLASS III RCP STORM DRAIN.

9. BUILD 1-4' DIA. TYPE "C" MH PER COA STD DWG. 2101.
N: 1497076.39
E: 1523344.84

10. BUILD 10.0 LF OF 12" CLASS III RCP STORM DRAIN. @ 5'-2.00%.
SEE DETAIL 1, SHEET 4.

11. STA. 3+17.51, 10.88 LT (Ø FLOW LINE)
BUILD 1-TYPE "C" STORM INLET PER COA STD DWG. 2205.
STORM INLET GRATE PER COA STD DWG. 2220.
GRATE EL. = 4969.95±
INV. = 4966.79±
SEE DETAIL "B" THIS SHEET.

12. REMOVE & REPLACE EX. CURB & GUTTER. BUILD NEW STD. CURB & GUTTER PER COA STD DWG. 2415A. SEE DETAIL 'B' THIS SHEET.

13. BUILD 38.60 LF OF 18" CLASS # RCP STORM DRAIN @ S=0.5%

14. STA. 3+50.60, 14.89 RT (© FLOW LINE)
BUILD 1-TYPE "C" STORM INLET PER COA STD DWG. 2205.
STORM INLET GRATE PER COA STD DWG. 2220.
GRATE EL. = 4970.32±
INV. (W) = 4967.08±, INV. (N) = 4967.18±
SEE DETAIL "C" THIS SHEET.

15. REMOVE & REPLACE EX. CURB & GUTTER. BUILD NEW STD. CURB & GUTTER PER CMA STD. DWG. 2415A. SEE DETAIL "C" THIS SHEET.

16. REMOVE & REPLACE CONCRETE DRIVEPAD WITH ADA ACCESSIBLE RAMPS PER DETAIL 3, SHEET 4. COORDINATE WITH HOME OWNER.

17. SMCUT ASPHALT PAVEMENT

18. RELOCATE SERVICE LINE AT WATERLINE AS REQUIRED PER COA STD DWG. 2363. HORIZONTAL AND VERTICAL LOCATION OF WATERLINE SHOWN ON PLAN IS APPROXIMATE. ALL SERVICE LINE REPLACEMENT SHALL BE FULL LENGTH NEW LINE, NO SPLICES ALLOWED.

19. COORDINATE GAS LINE RELOCATION WITH PHM AS REQUIRED.

20. BUILD 46.24 LF OF 12" CLASS III RCP STORM DRAIN. @ S=0.5%

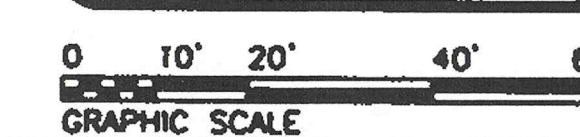
21. STA. 3+97.33, 14.13 RT (@ FLOW LINE)
BUILD 1-TYPE "C" STORM INLET PER COA STD DWG. 2205.
STORM INLET GRATE PER COA STD DWG. 2220.
GRATE EL. = 4970.24±
INV. = 4967.41
SEE DETAIL, 'C' THIS SHEET.

ASCG
INCORPORATED



ENGINEERS • ARCHITECTS • SURVEYORS • PLANNERS

6501 AMERICAS PARKWAY NE, SUITE 600
ALBUQUERQUE, NEW MEXICO 87110-3372
PHONE 505.247.8294 • FAX 505.247.4843



**CITY OF ALBUQUERQUE
PUBLIC WORKS DEPARTMENT**

TITLE: STORM DRAIN PLAN & PROFILE

Design Review Committee	City Engineer Approval	Last Design Update	Mo./Day/Yr.	Mo./Day/Yr.			
City Project No.	7386.03	Zone Map No.	H-14-Z	Sheet	3	Of	4

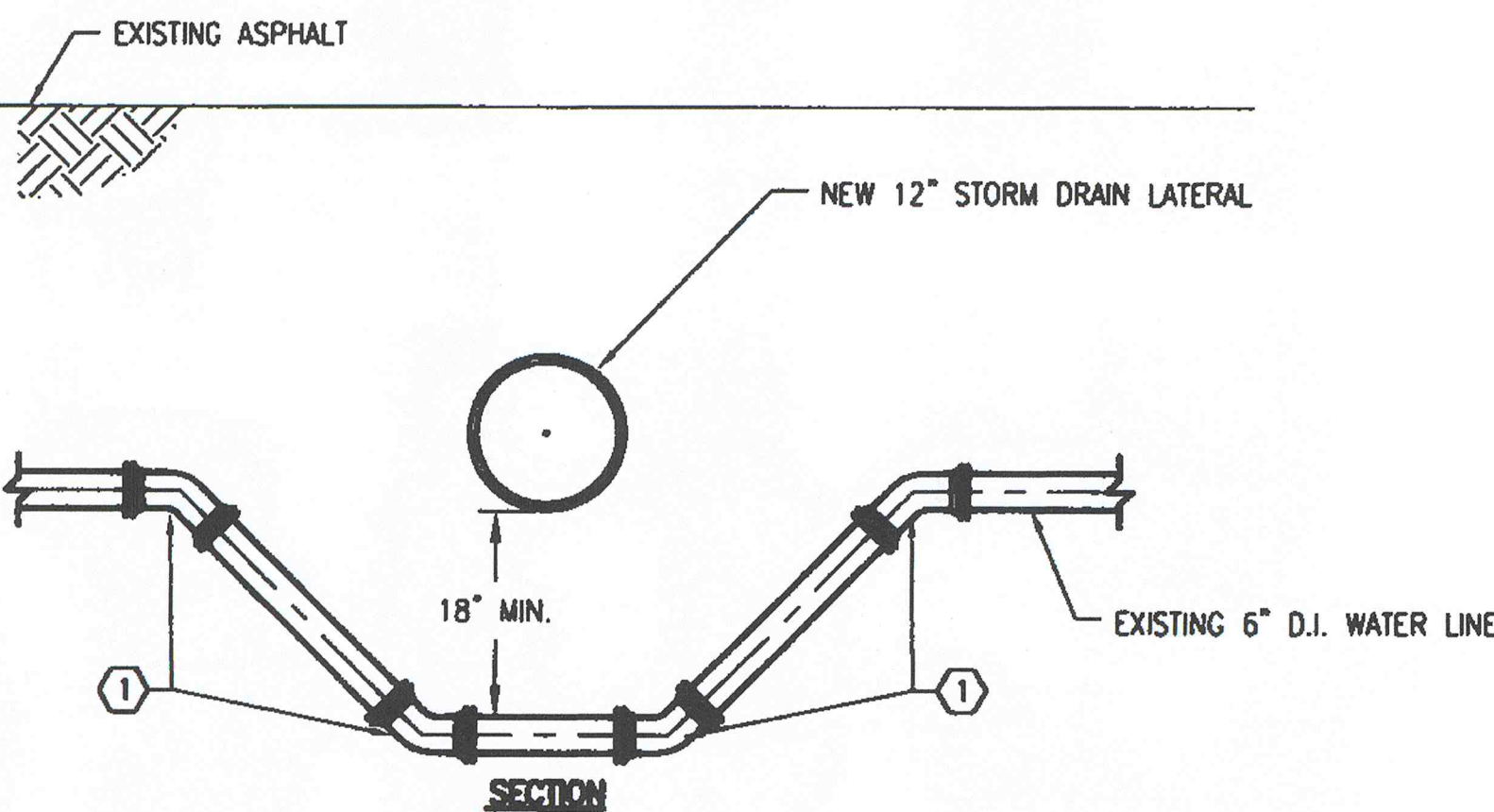
City Project No.	7396.03	Zone Map No.	H-14-Z	Sheet	3	Of	4
------------------	---------	--------------	--------	-------	---	----	---

GENERAL NOTES (DETAIL 1)

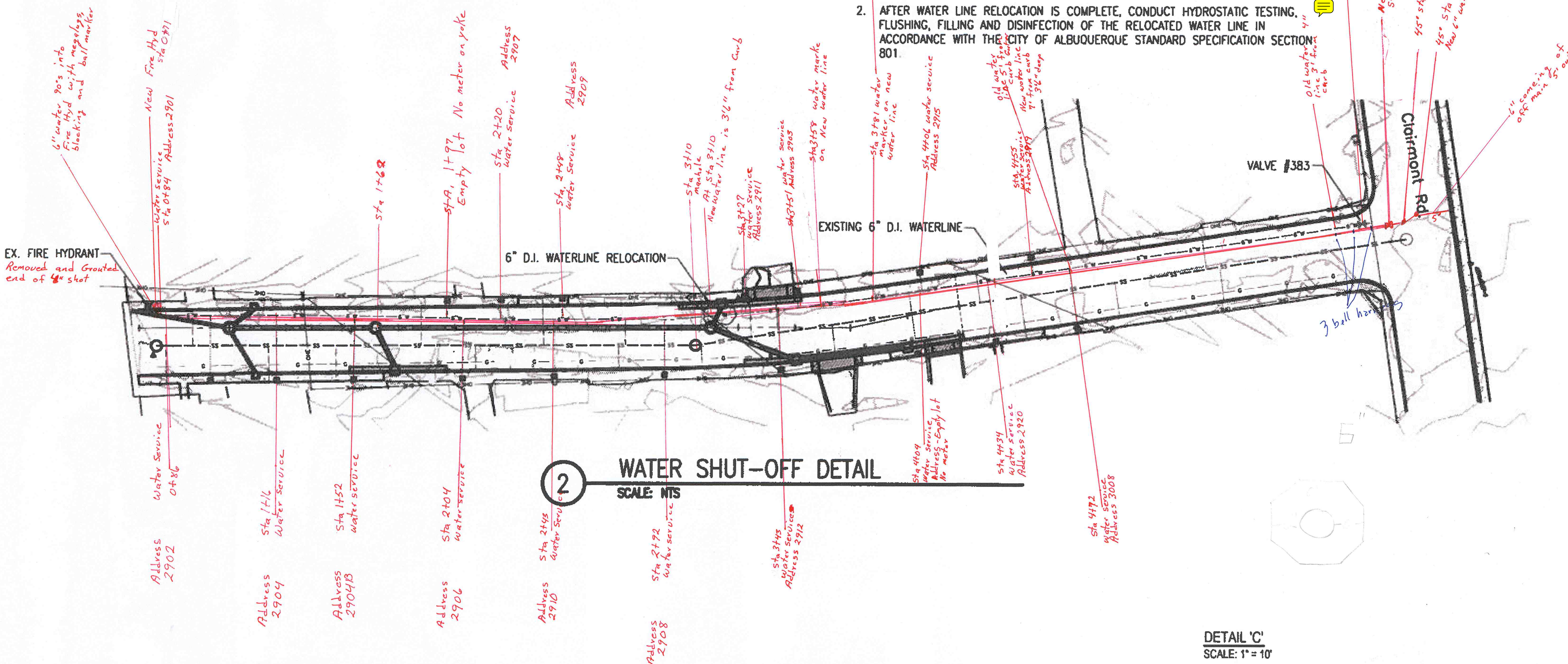
1. PROVIDE MINIMUM 18" CLEARANCE BETWEEN NEW STORM DRAIN LATERAL AND RELOCATED 6" WATERLINE. THE 6" WATERLINE SHALL BE RELOCATED AND INSTALLED BENEATH THE NEW STORM DRAIN LATERAL AS SHOWN IN THIS DETAIL.
2. RESTRAIN ALL JOINTS USED IN WATERLINE RELOCATION.
3. INSTALL ELECTRONIC MARKER SPHERES OVER NEW WATER LINE 45 DEGREE BENDS.
4. ALL WORK SHALL ADHERE TO C.O.A. STD. SPEC. 801.

KEYED NOTES (DETAIL 1)

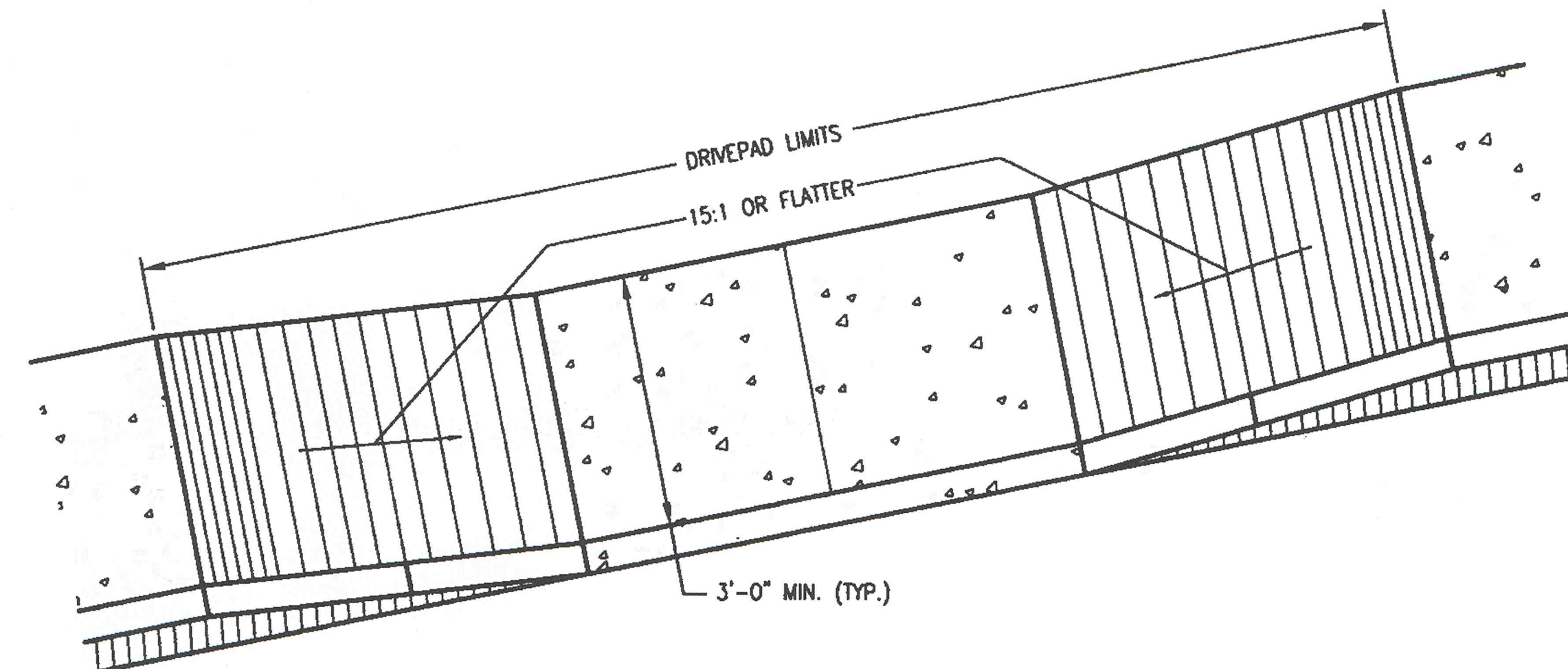
1. 1~45 DEGREE VERTICAL BEND (M.J.). RESTRAIN ALL JOINTS AS REQUIRED BY PIPE SIZE, AND TEST PRESSURE.



1 STA. 3+15.77, 5.32' LT.
6" D.I. WATERLINE RELOCATION DETAIL
SCALE: NTS



2 WATER SHUT-OFF DETAIL
SCALE: NTS



3 DRIVEPAD DETAIL- RAMP SIDEWALK
SCALE: NTS

GENERAL NOTES (DETAIL 2)

1. COORDINATE WATER SHUT-OFF WITH ALBUQUERQUE BERNALILLO COUNTY WATER UTILITY AUTHORITY, 505-857-8200. VALVE #383 SHALL BE CLOSED PRIOR TO WATERLINE RELOCATION.
2. AFTER WATER LINE RELOCATION IS COMPLETE, CONDUCT HYDROSTATIC TESTING, FLUSHING, FILLING AND DISINFECTION OF THE RELOCATED WATER LINE IN ACCORDANCE WITH THE CITY OF ALBUQUERQUE STANDARD SPECIFICATION SECTION: 801.



0 10' 20' 40' 60'
GRAPHIC SCALE

CITY OF ALBUQUERQUE
PUBLIC WORKS DEPARTMENT

TITLE:
WATERLINE RELOCATION AND SHUT-OFF DETAIL

Design Review Committee	City Engineer Approval	Mo./Day/Yr.	Mo./Day/Yr.
City Project No.	Zone Map No.	Sheet	Of
7396.03	H-14-Z	4	4

BENCH MARKS		AS BUILT INFORMATION	
BENCH MARK DATA CONSISTS OF PUBLISHED A.C.S. MONUMENT INFORMATION AND IS SHOWN ON SHEET G-1.		CONTRACTOR	DATE
(NEW MEXICO STATE PLANE CENTRAL ZONE, NAD 83, NAVD 1988)		DESIGNED BY	DATE
		FIELD VERIFICATION BY	DATE
		CORRECTED BY	DATE
MICRO-FILM INFORMATION		RECORDED BY	DATE
		NO.	