

PLANT LEGEND/Site

Qty.	Symbol	Scientific Name Common Name	Installed Size	Mature Height/Spread	Landscape Coverage	Water Use	Drip Emitters
5		Quercus buckleyi Texas Red Oak	2" B&B	40'/35'	50 sf=250 sf	Medium	6-2 gph
8		Fraxinus velutina Modesto Ash	2" B&B	40'/40'	50 sf=400 sf	Medium	+6-2 gph
8		Ulmus hybrid Acolade Elm	2" B&B	80'/80'	50 sf=400 sf	Medium	6-2 gph
9		Pistacia chinensis Chinese Pistache	2" B&B	60'/60'	50 sf=450 sf	Medium	+6-2 gph
9		Robinia pseudoacacia Purple Robe Locust	2" B&B	40'/40'	50 sf=450 sf	Medium	6-2 gph
9		Sophora japonica Japanese Pagoda Tree	2" B&B	25'/15'	50 sf=450 sf	Medium	+6-2 gph
4		Pinus nigra Austrian Pine	10' HT.	30'/20'	50 sf=200 sf	Medium	6-2 gph
2		Forestiera neomexicana NM Olive	2" B&B	15'/8"	50 sf=100 sf	Medium	6-2 gph
Shrubs/Groundcovers							
9		Caesalpinia Bird of Paradise	5-Gal	8'/8"	64 sf=576 sf	Medium	2-2 gph
6		Buddleia davidii Black Knight Butterfly Bush	1-Gal	6'/6"	36 sf=288 sf	Medium	2-2 gph
23		Caryopteris clandonensis Dark Knight Blue Mist	1-Gal	4'/4"	25 sf=575 sf	Medium	2-2 gph
6		Carthagenus intricatus Littleleaf Mountain Mahogany	5-Gal	10'/10"	100 sf=600 sf	Medium	2-2 gph
25		Rhus aromatica Gro Low Sumac	5-Gal	2'/6"	36 sf=900 sf	Low +	2-2 gph
35		Ericameria laricifolia 'Aguirre' Turpentine Bush	5-Gal	3'/4"	25 sf=875 sf	Low	2-1 gph
30		Yucca baccata Datiil	5-Gal	3'/3"	27 sf=810 sf	Medium+2-1	gph
11		Salvia greggii Cherry Sage	1-Gal	3'/3"	15 sf=165 sf	Medium	2-1 gph
20		Hesperaloe parviflora Red Yucca	5-Gal	3'/4"	30 sf=600 sf	Low	2-2 gph
26		Juniperus sabinia 'Buffalo' Buffalo Juniper (female)	5-Gal	2'/6"	36 sf=972 sf	Low +	2-2 gph
18		Dasylirion Sotol	1-Gal	3'/3"	27 sf=486 sf	Medium	2-2 gph
21		Prunus besseyi Pawnee Buttes Western Sand Cherry	5-Gal	6'/6"	36 sf=756 sf	Medium	2-2 gph
21		Chamaebatiaria millefolium Fernbush	5-Gal	6'/6"	36 sf=756 sf	Low +	2-2 gph
16		Cytisus scoparius Moonlight Broom	5-Gal	3'/3"	15 sf=180 sf	Medium+2-2	gph
10		Vitex agnus-castus Chaste Tree	5-Gal	15'/10"	100 sf=1000 sf	Medium+2-2	gph
27		Nepeta Catmint	1-Gal	1'/3"	6 sf=162 sf	Medium	2-2 gph
40		Baccharis slarn Thompson Broom	5-Gal	3'/3"	15 sf=615 sf	Medium	2-2 gph
8		Fallugia paradoxa Apache Plume	5-Gal	10'/10"	100 sf=800 sf	Medium	2-2 gph
19		Lavandula Lavender	1-Gal	3'/3"	12 sf=228 sf	Medium	2-2 gph
Grasses							
20		Muhlenbergia Deer Grass	1-Gal	4'/4"	20 sf=400 sf	Low+	2-2 gph
12		Sporobolus wrightii Giant Sacaton	1-Gal	8'/6"	36 sf=432 sf	Medium	2-2 gph
82		Calamagrotis acutiflora Karl Foerster Grass	5-Gal	3'/2"	10 sf=820 sf	Medium	2-2 gph

Total Landscape Coverage=15,696 SF

MATERIALS LEGEND

- BROWN CRUSHER FINES
- 1 1/2" BLUE SAIZ GRAVEL

SITE DATA/Lot 2/Verizon

PAVED AREA	18,250 SF
REQUIRED LANDSCAPE	15,696 SF
20% OF PAVED AREA (UA SDP)	3,650 SF
PROPOSED LANDSCAPE	6,081 SF
PERCENT OF NET LOT AREA	33 %
GROSS LOT AREA (7,345 ac.)	31,995 SF
LESS BUILDING(S)	3,638 SF
NET LOT AREA	28,357 SF

REQUIRED LANDSCAPE	4,254 SF
15% OF NET LOT AREA	4,254 SF
PROPOSED LANDSCAPE	6,081 SF
PERCENT OF NET LOT AREA	21 %

SITE DATA/Lot 3/Starbucks

PAVED AREA	15,500 SF
REQUIRED LANDSCAPE	13,907 SF
20% OF PAVED AREA (UA SDP)	3,100 SF
PROPOSED LANDSCAPE	7,891 SF
PERCENT OF NET LOT AREA	49 %
GROSS LOT AREA (8,942 ac.)	38,951 SF
LESS BUILDING(S)	6,208 SF
NET LOT AREA	32,743 SF

REQUIRED LANDSCAPE	4,911 SF
15% OF NET LOT AREA	4,911 SF
PROPOSED LANDSCAPE	7,891 SF
PERCENT OF NET LOT AREA	23 %

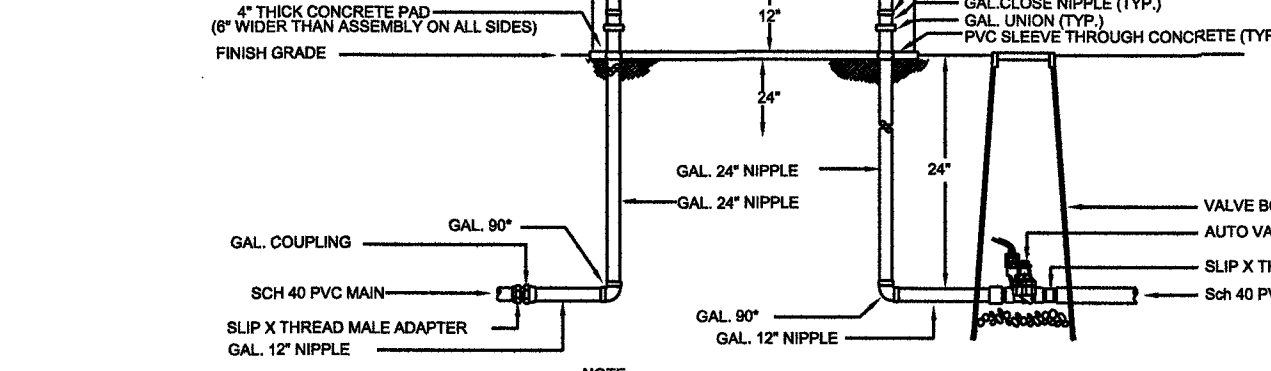
SITE DATA/Lot 4/Panera

PAVED AREA	21,000 SF
REQUIRED LANDSCAPE	19,907 SF
20% OF PAVED AREA (UA SDP)	4,200 SF
PROPOSED LANDSCAPE	7,850 SF
PERCENT OF NET LOT AREA	36 %
GROSS LOT AREA (9,870 ac.)	42,994 SF
LESS BUILDING(S)	4,046 SF
NET LOT AREA	38,948 SF

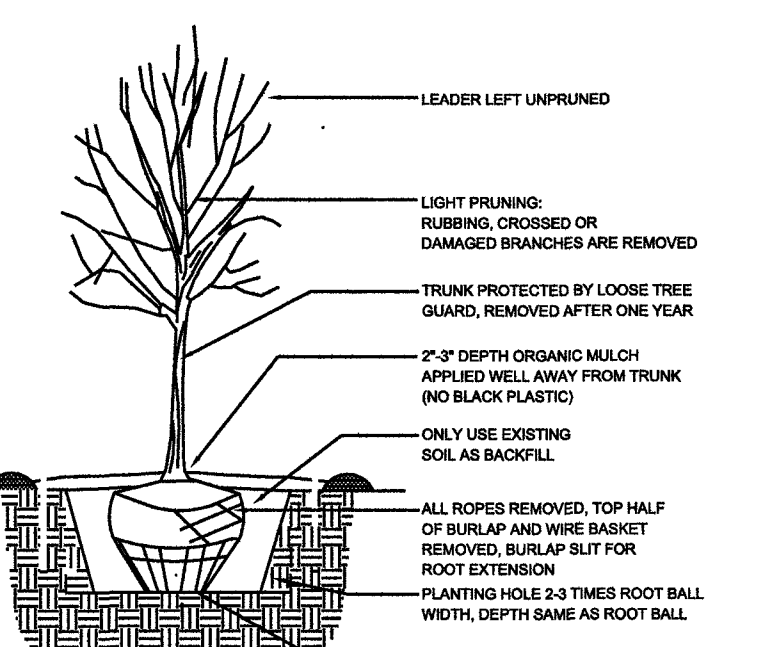
REQUIRED LANDSCAPE	5,842 SF
15% OF NET LOT AREA	5,842 SF
PROPOSED LANDSCAPE	7,850 SF
PERCENT OF NET LOT AREA	19 %

IRRIGATION NOTE

DRIP SYSTEM RUN CYCLES:
ESTABLISHMENT AND SUMMER:
1 HOUR/4 DAYS A WEEK
SPRING:
1 HOUR/2-3 DAYS A WEEK
FALL:
1 HOUR/2-3 DAYS A WEEK
WINTER:
1 HOUR/2 DAYS PER MONTH



RP BACKFLOW/MASTER VALVE DETAIL



TREE PLANTING DETAIL

SITE DATA/Site

GROSS LOT AREA (2,61 ac.)	113,692 SF
LESS BUILDING(S)	13,892 SF
NET LOT AREA	99,800 SF

REQUIRED LANDSCAPE	14,970 SF
15% OF NET LOT AREA	14,970 SF
PROPOSED LANDSCAPE	19,907 SF
PERCENT OF NET LOT AREA	19 %

HIGH WATER USE TURF	0 SF
MAX. 20% OF LANDSCAPE AREA	0 SF
PROPOSED HIGH WATER USE TURF	0 SF
PERCENT OF LANDSCAPE AREA	0 %

REQUIRED STREET TREES	29
1 PER 25 L.F. OF STREET FRONTAGE	29
PROVIDED STREET TREES	29

REQUIRED PARKING LOT TREES	12
1 PER 10 SPACES	12
PROVIDED PARKING LOT TREES	14

TOTAL TREE REQUIRED/PROVIDED	41/54
(2" cal or 6" ht.)	

REQUIRED LANDSCAPE COVERAGE	14,930 SF MIN.
75% LIVE VEGETATIVE MATERIAL	15,696 SF
(19,907 SF PROPOSED LANDSCAPE X 75%)	
PROVIDED GROUNDCOVER COVERAGE	15,696 SF
PERCENT GROUNDCOVER COVERAGE	7%
OF REQUIRED LANDSCAPE AREAS	

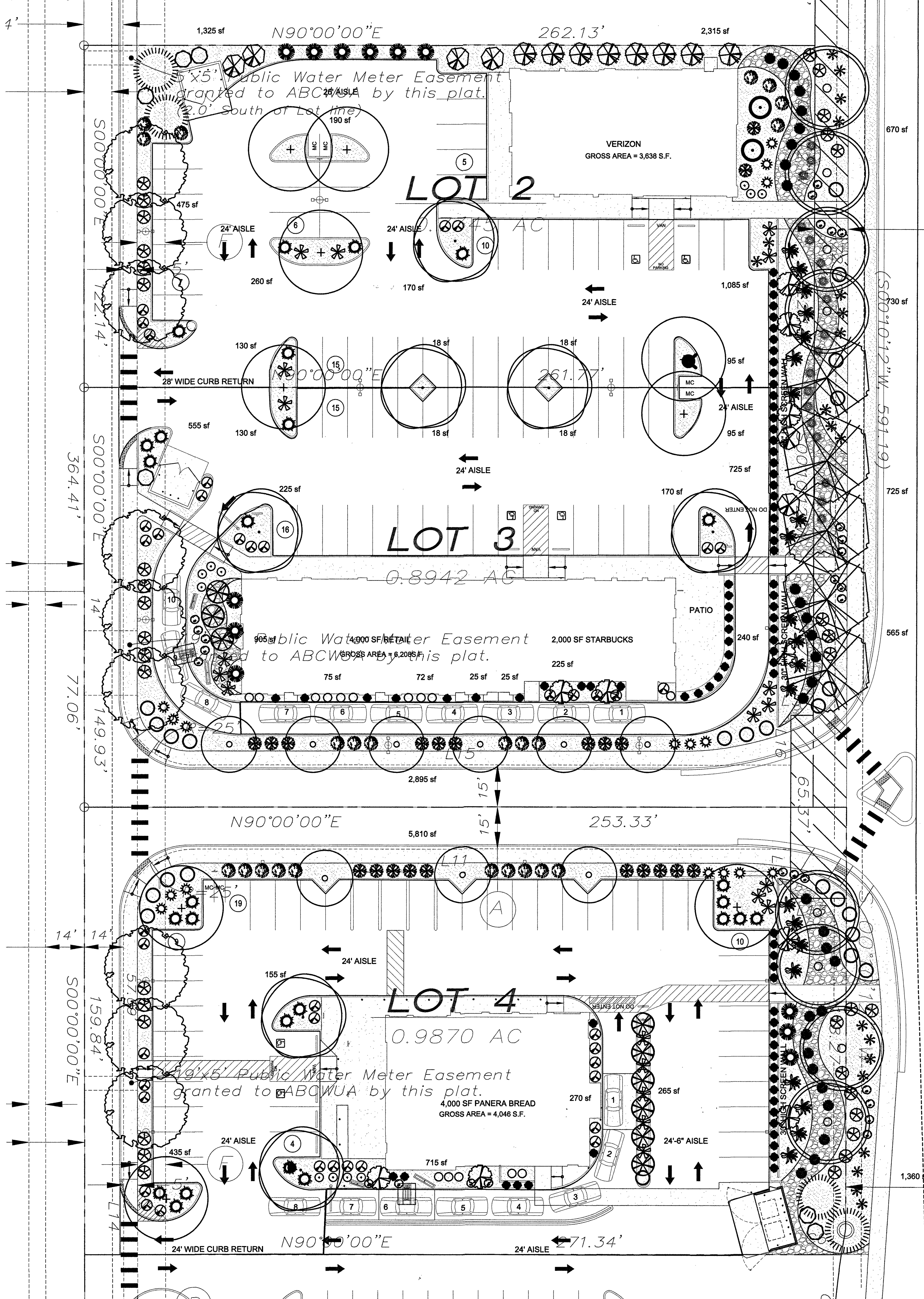
NOTE

MAINTENANCE OF LANDSCAPE (ONSITE AND WITHIN ROW) TO BE MAINTAINED BY PROPERTY OWNER
PLANTINGS TO BE WATERED BY AUTO. DRIP IRRIGATION SYSTEM WITH REDUCED PRESSURE BACKFLOW PREVENTER PER CITY OF ALBUQUERQUE AND CENTRALIZED COMPUTER IRRIGATION CONTROLLER SYSTEM. THE IRRIGATION SYSTEM SHALL BE DESIGNED TO AVOID OVER SPRAYING ONTO WALLS, BUILDINGS, FENCES, SIDEWALKS, ETC. IRRIGATION COMPONENTS SHALL BE CHECKED PERIODICALLY TO ENSURE MAXIMUM EFFICIENCY.
WATER MANAGEMENT IS THE SOLE RESPONSIBILITY OF THE PROPERTY OWNER
THIS PLAN IS TO COMPLY WITH C.O.A. LANDSCAPE AND WATER WASTE ORDINANCE 6-1-1. PLANTING RESTRICTIONS APPROACH
IT IS THE INTENT OF THIS PLAN TO PROVIDE MIN. 75% LIVE GROUNDCOVER OF LANDSCAPE AREAS AT MATURITY PER ORDINANCE 14-16-3-10 (SEE CALCULATIONS PROVIDED ABOVE)
LANDSCAPE AREAS TO BE MULCHED WITH GRAVEL MULCH AT 3" DEPTH OVER FILTER FABRIC

APPROVAL OF THE LANDSCAPE PLAN DOES NOT CONSTITUTE OR IMPLY COMPLIANCE WITH, OR EXEMPTION FROM, THE C.O.A. LANDSCAPE AND WATER WASTE ORDINANCE 6-1-1.
NO PARKING SPACE SHALL BE MORE THEN 100' FROM A TREE.
STREET TREES TO CONFORM TO STREET TREE ORDINANCE 6-6-2.
LANDSCAPE PLAN TO CONFORM TO ZONING REGULATIONS ORDINANCE 14-16-3-10.
LANDSCAPING AND SIGNING WILL NOT INTERFERE WITH CLEAR SIGHT REQUIREMENTS. THEREFORE, SIGNS, WALLS, TREES AND SHRUBBERY BETWEEN 3 AND 8 FEET TALL (AS MEASURED FROM THE GUTTER PAN) WILL NOT BE ALLOWED IN THIS AREA.

IRRIGATION SYSTEM: AN AUTOMATIC UNDERGROUND IRRIGATION SYSTEM WILL BE UTILIZED TO PROVIDE EVEN AND ADEQUATE WATER LEVELS TO ALL PLANT MATERIAL. WATER USE SHALL BE DONE IN SUCH A MANNER AS TO CONSERVE ITS USE AND PREVENT ANY AND ALL RUNOFF FROM LANDSCAPE MATERIALS. IRRIGATION SHALL BE RESTRICTED TO EARLY MORNING HOURS TO CONSERVE THIS LIMITED RESOURCE.

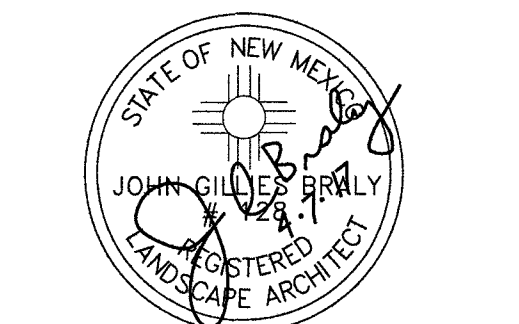
STREETSCAPE LANDSCAPING SHALL CONSIST PRIMARILY OF SHRUBS AND DECIDUOUS TREES IN A SETBACK AREA BETWEEN THE RIGHT-OF-WAY OF THE STREET AND THE FACE OF THE CURB OF AN ADJACENT PARKING AREA. CLEAR-SIGHT TRIANGLE REQUIREMENTS MUST BE MET.
TREES IN PROXIMITY OF DUMPSTER TO BE MAINTAINED TO ALLOW FOR TRUCK ACCESS WITHOUT DAMAGE TO TRUCK OR TREES
LANDSCAPE PLAN MUST COMPLY WITH THE COA WATER CONSERVATION ORDINANCE AND POLLEN ORDINANCE



Addition way ded Albuquerque warranty (0.1423)

growing better **Up Heads** LANDSCAPE CONTRACTORS
www.headsuplandscape.com

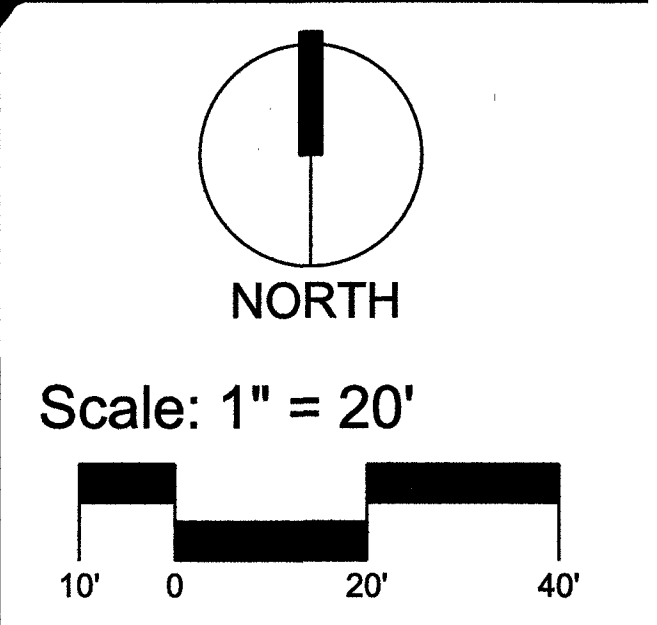
PO Box 10597
Albuquerque, NM 87184
505.898.9615
505.898.2105 (fax)
design@hulc.com



Date: 12/19/2016
Revisions:
▲ 1/31/17
▲ 2/3/17
▲ 2/27/17
▲ 4/7/17

Drawn by: jc
Reviewed by: jb

Coors Pavilion
Albuquerque, New Mexico



Sheet Title:
Landscape Plan

Sheet Number:
B1