


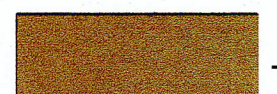




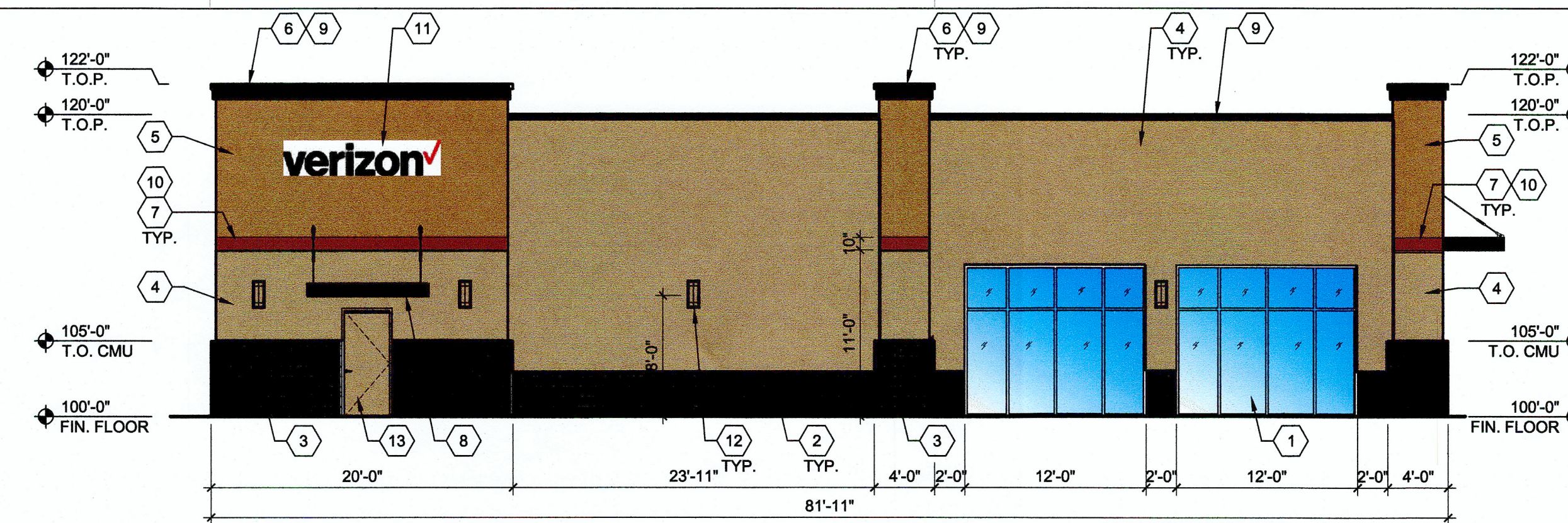
GENERAL SHEET NOTES

7 SHEET KEYED NOTES

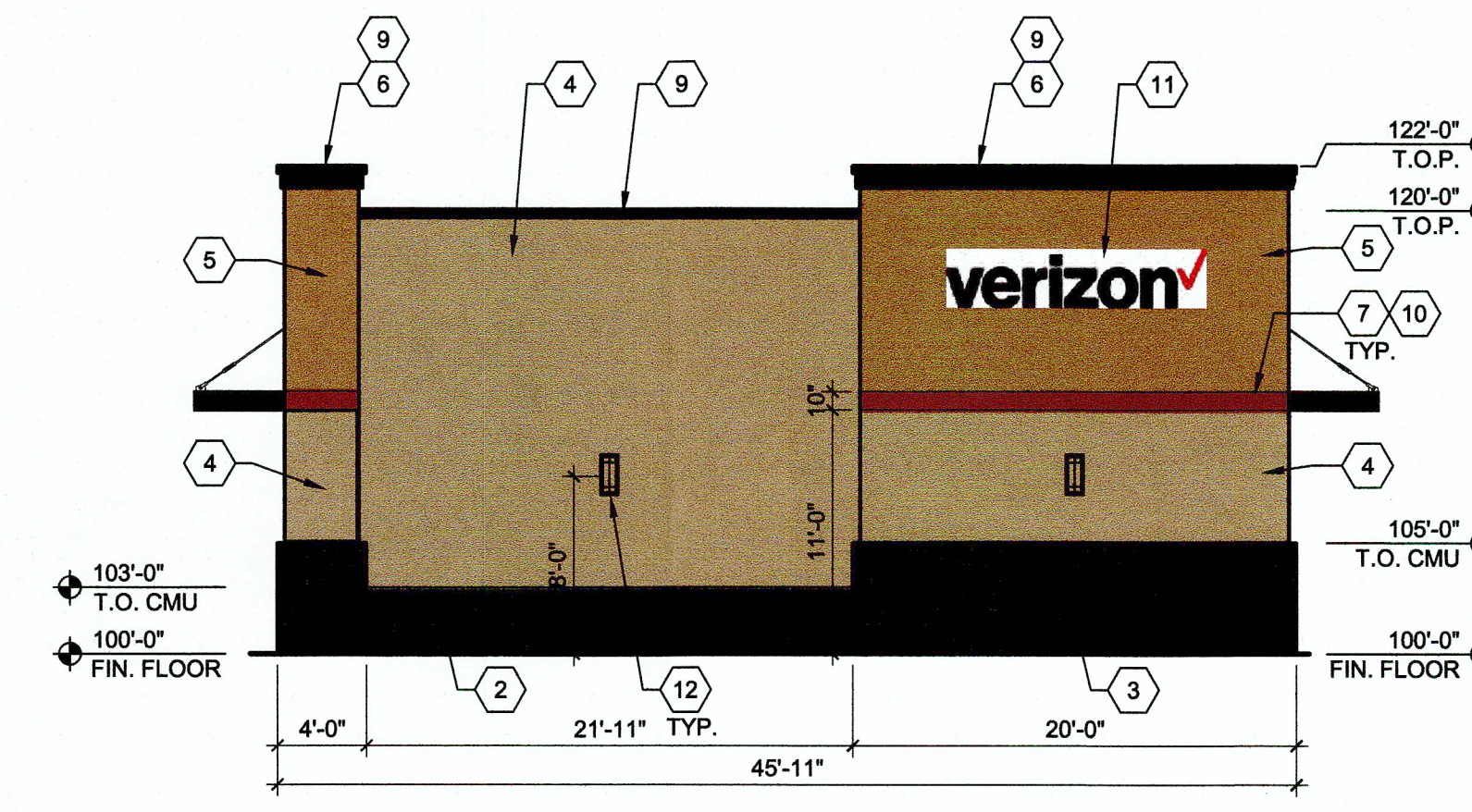
1. ALUMINUM STOREFRONT, COLOR: ANODIZED ALUMINUM.
2. CMU VENEER 1: SMOOTH-FACE, COLOR: DARK GREY.
3. CMU VENEER 2: SMOOTH-FACE and SPLIT-FACE, COLOR: DARK GREY.
4. EXTERIOR INSULATION AND FINISH SYSTEM (EIFS), COLOR 1: LIGHT GREY.
5. EXTERIOR INSULATION AND FINISH SYSTEM (EIFS), COLOR 2: MEDIUM GREY.
6. EXTERIOR INSULATION AND FINISH SYSTEM (EIFS), COLOR 3: DARK GREY.
7. EXTERIOR INSULATION AND FINISH SYSTEM (EIFS), COLOR 4: DARK RED.
8. STEEL AWNING, COLOR: MEDIUM GREY.
9. PRE-FINISHED METAL COPING, COLOR: DARK GREY.
10. CONTROL JOINT.
11. BUILDING SIGNAGE, SEE: GENERAL SHEET NOTES.
12. WALL SCENCE.
13. HOLLOW METAL DOOR, COLOR: TO MATCH ADJACENT WALL FINISH.

LEGEND

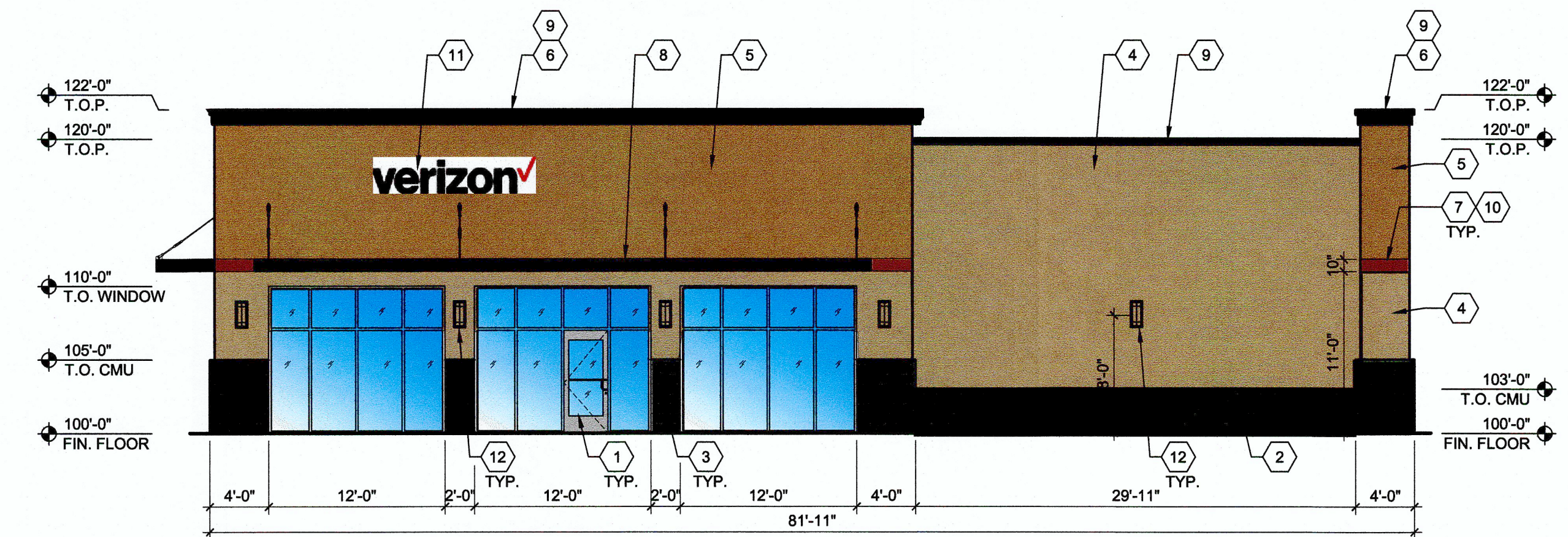
-  CMU1
- CMU VENEER 1: SMOOTH-FACE
- COLOR: DARK GREY
-  CMU2
- CMU VENEER 2: SMOOTH-FACE and SPLIT-FACE
- COLOR: DARK GREY
-  - EXTERIOR INSULATION AND FINISH SYSTEM (EIFS)
- COLOR 1:
-  - EXTERIOR INSULATION AND FINISH SYSTEM (EIFS)
- COLOR 2:
-  - EXTERIOR INSULATION AND FINISH SYSTEM (EIFS)
- COLOR 3: DARK GREY
-  - EXTERIOR INSULATION AND FINISH SYSTEM (EIFS)
- COLOR 4: DARK RED



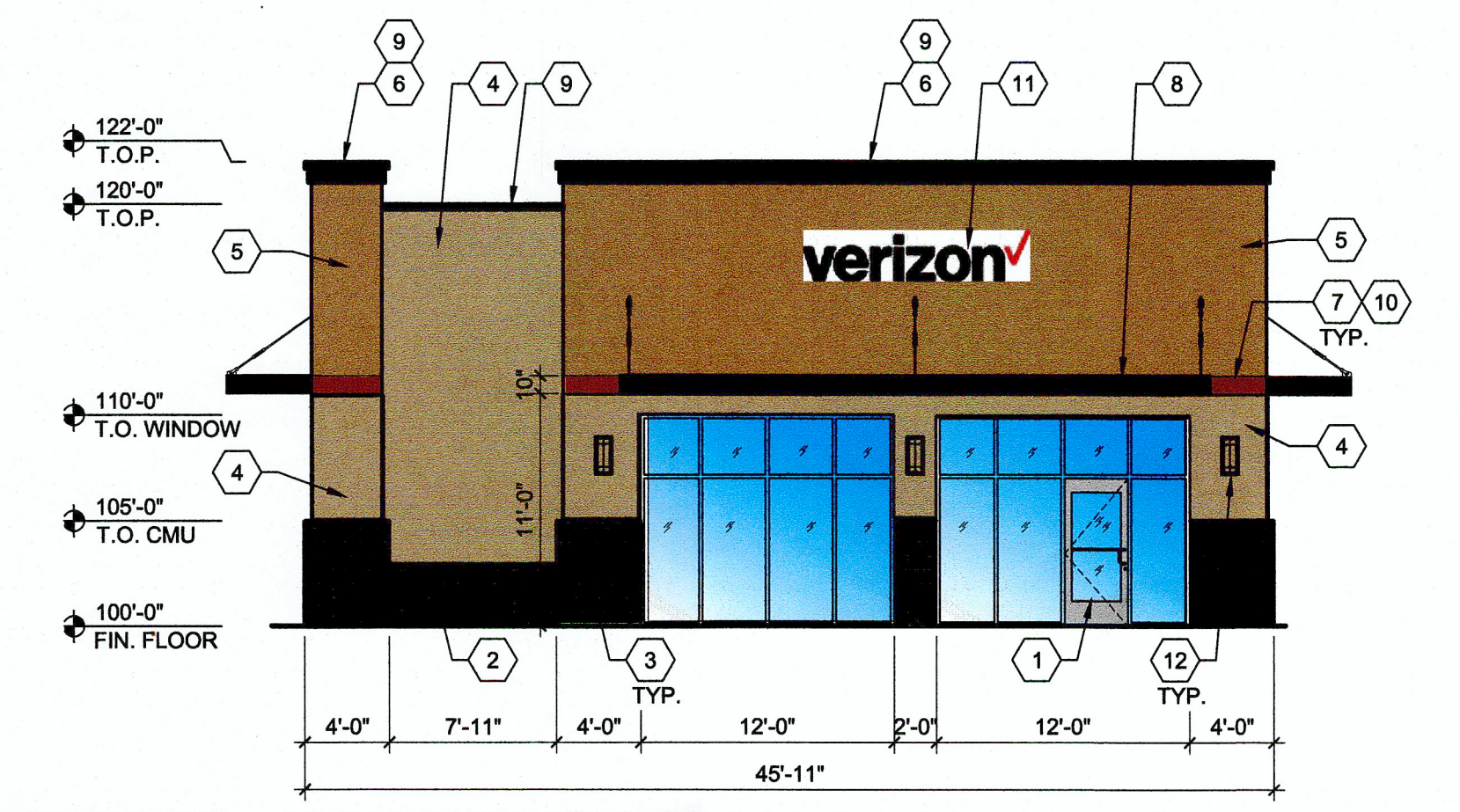
D3 BUILDING - NORTH ELEVATION (looking south) - proposed
1/8" = 1'-0"
0 4' 8' 16'



C4 BUILDING - EAST ELEVATION (looking west) - proposed
1/8" = 1'-0"
0 4' 8' 16'



B3 BUILDING - SOUTH ELEVATION (looking north) - proposed
1/8" = 1'-0"
0 4' 8' 16'



A4 BUILDING - WEST ELEVATION (looking east) - proposed
1/8" = 1'-0"
0 4' 8' 16'