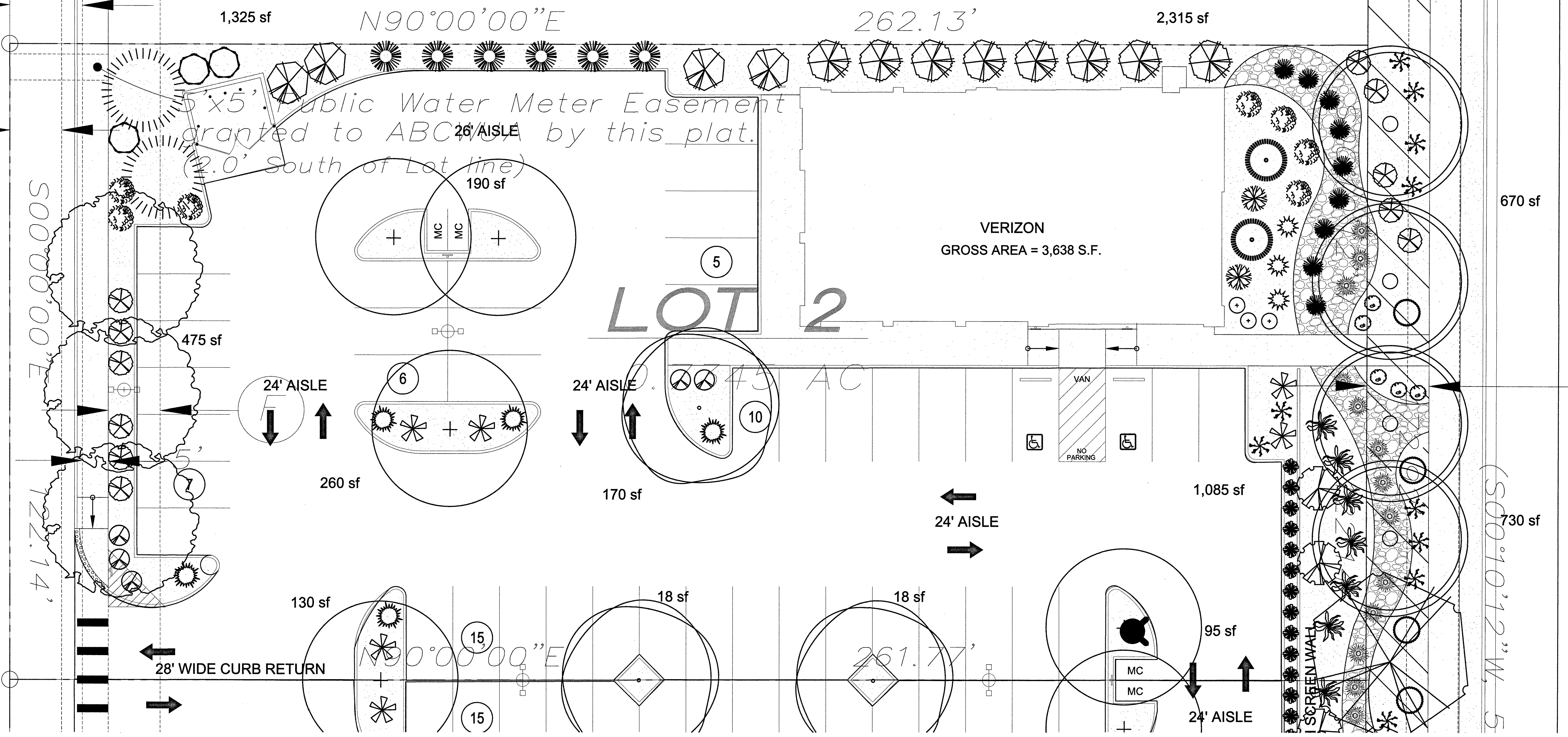


Date: 12/19/2016  
 Revisions:  
 ▲ 1/31/17  
 ▲ 2/3/17  
 ▲ 2/27/17  
 ▲ 4/7/17

Drawn by: jc  
 Reviewed by: jb

**Verizon Coors Pavilion**  
 Albuquerque, New Mexico



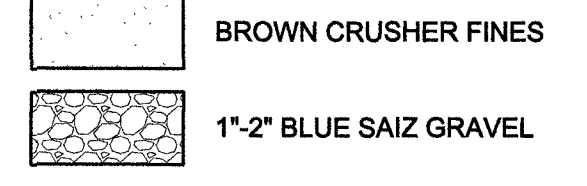
**PLANT LEGEND/Verizon**

Qty.	Symbol	Scientific Name	Common Name	Installed Size	Mature Height/Spread	Landscape Coverage	Water Use	Drip Emitters
<b>Trees</b>								
1	(Symbol)	Quercus buckleyi	Texas Red Oak	2" B&B	40/35'	50 sf=50 sf	Medium	6-2 gph
4	(Symbol)	Fraxinus velutina	Modesto Ash	2" B&B	40/40'	50 sf=200 sf	Medium	+6-2 gph
2	(Symbol)	Ulmus hybrid	Accolade Elm	2" B&B	80/80'	50 sf=100 sf	Medium	6-2 gph
3	(Symbol)	Pistacia chinensis	Chinese Pistache	2" B&B	60/60'	50 sf=150 sf	Medium	+6-2 gph
4	(Symbol)	Robinia pseudoacacia	Purple Robe Locust	2" B&B	40/40'	50 sf=200 sf	Medium	6-2 gph
2	(Symbol)	Pinus nigra	Austrian Pine	10' HT.	30/20'	50 sf=100 sf	Medium	6-2 gph
2	(Symbol)	Forestiera neomexicana	NM Olive	2" B&B	15/8'	50 sf=100 sf	Medium	6-2 gph
<b>Shrubs/Groundcovers</b>								
3	(Symbol)	Buddleia davidii	Black Knight Butterfly Bush	1-Gal	6/6'	36 sf=108 sf	Medium	2-2 gph
7	(Symbol)	Caryopteris clandonensis	Dark Knight Blue Mist	1-Gal	4/4'	25 sf=175 sf	Medium	2-2 gph
4	(Symbol)	Cercocarpus intricatus	Littleleaf Mountain Mahogany	5-Gal	10/10'	100 sf=400 sf	Medium	2-2 gph
3	(Symbol)	Rhus aromatica	Gro Low Sumac	5-Gal	2/6'	36 sf=108 sf	Low +	2-2 gph
11	(Symbol)	Ericameria laricifolia 'Aguirre'	Turpentine Bush	5-Gal	3/4'	25 sf=275 sf	Low	2-1 gph
9	(Symbol)	Yucca baccata	Datil	5-Gal	3/3'	27 sf=243 sf	Medium+2-1	gph
3	(Symbol)	Salvia greggii	Cherry Sage	1-Gal	3/3'	15 sf=45 sf	Medium	2-1 gph
5	(Symbol)	Hesperaloe parviflora	Red Yucca	5-Gal	3/4'	30 sf=150 sf	Low	2-2 gph
5	(Symbol)	Juniperus sabinia 'Buffalo'	Buffalo Juniper (female)	5-Gal	2/6'	36 sf=180 sf	Low +	2-2 gph
11	(Symbol)	Dasylyron	Sotol	1-Gal	3/3'	27 sf=297 sf	Medium	2-2 gph

2	(Symbol)	Prunus besseyi	Pawnee Buttes Western Sand Cherry	5-Gal	6/6'	36 sf=72 sf	Medium	2-2 gph
6	(Symbol)	Chamaebatiaria millefolium	Fernbush	5-Gal	6/6'	36 sf=216 sf	Low +	2-2 gph
3	(Symbol)	Cytisus scoparius	Moonlight Broom	5-Gal	3/3'	15 sf=45 sf	Medium+2-2	gph
2	(Symbol)	Vitex agnus-castus	Chaste Tree	5-Gal	15/10'	100 sf=200 sf	Medium+2-2	gph
5	(Symbol)	Nepeta	Catmint	1-Gal	1/3'	6 sf=30 sf	Medium	2-2 gph
5	(Symbol)	Baccharis stam	Thompson Broom	5-Gal	3/3'	15 sf=75 sf	Medium	2-2 gph
8	(Symbol)	Fallugia paradoxa	Apache Plume	5-Gal	10/10'	100 sf=800 sf	Medium	2-2 gph
<b>Grasses</b>								
9	(Symbol)	Muhlenbergia	Deer Grass	1-Gal	4/4'	20 sf=180 sf	Low+	2-2 gph
6	(Symbol)	Sporobolus wrightii	Giant Sacaton	1-Gal	8/6'	36 sf=216 sf	Medium	2-2 gph
19	(Symbol)	Calamagrotis acutiflora	Karl Foerster Grass	5-Gal	3/2'	10 sf=110 sf	Medium	2-2 gph

Total Landscape Coverage=4,625 SF

**MATERIALS LEGEND**



**IRRIGATION NOTE**

DRIP SYSTEM RUN CYCLES:  
 ESTABLISHMENT AND SUMMER:  
 1 HOUR/4 DAYS A WEEK  
 SPRING:  
 1 HOUR/2-3 DAYS A WEEK  
 FALL:  
 1 HOUR/2-3 DAYS A WEEK  
 WINTER:  
 1 HOUR/2 DAYS PER MONTH

**SITE DATA/Verizon**

GROSS LOT AREA (.7345 ac.) 31,895 SF  
 LESS BUILDING(S) 3,638 SF  
 NET LOT AREA 28,357 SF

REQUIRED LANDSCAPE 15% OF NET LOT AREA 4,254 SF  
 PROPOSED LANDSCAPE 6,081 SF  
 PERCENT OF NET LOT AREA 21 %

HIGH WATER USE TURF MAX. 20% OF LANDSCAPE AREA 0 SF  
 PROPOSED HIGH WATER USE TURF 0 SF  
 PERCENT OF LANDSCAPE AREA 0 %

REQUIRED STREET TREES 1 PER 25 L.F. OF STREET FRONTAGE 10  
 PROVIDED STREET TREES 10

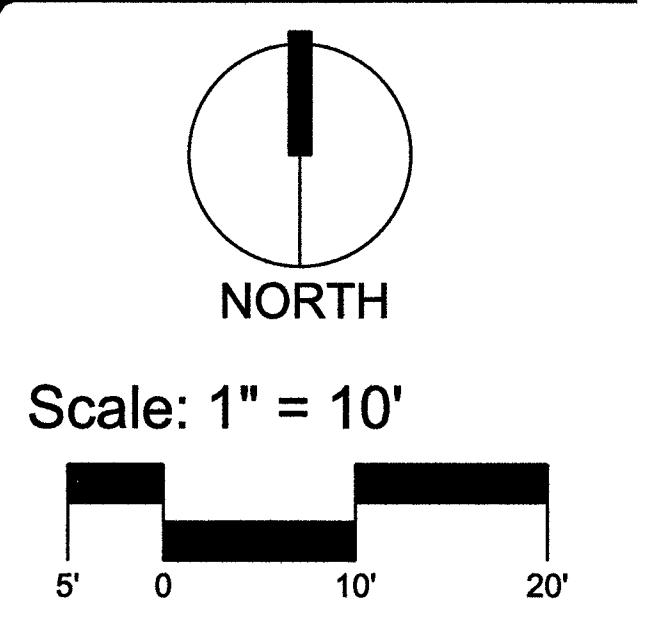
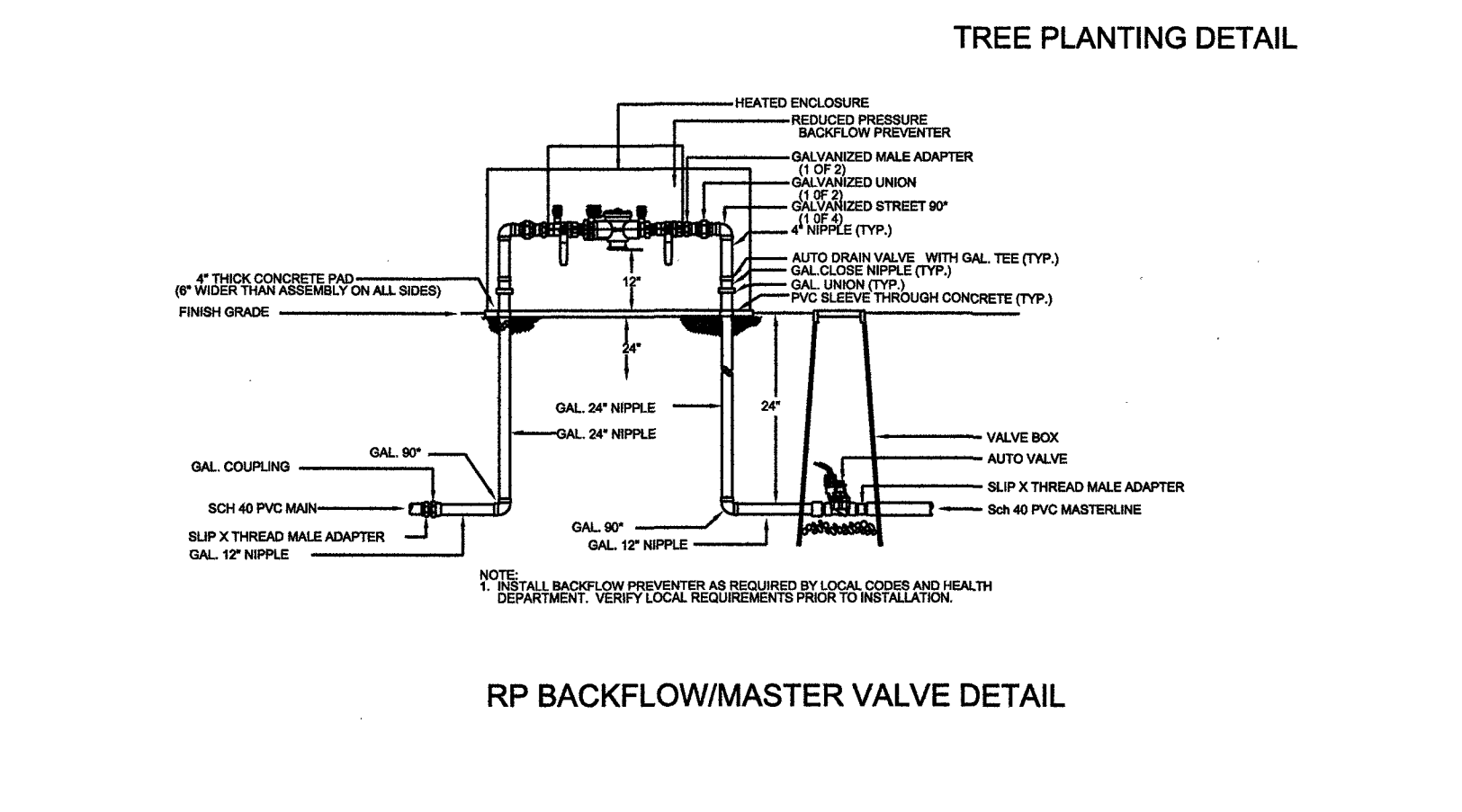
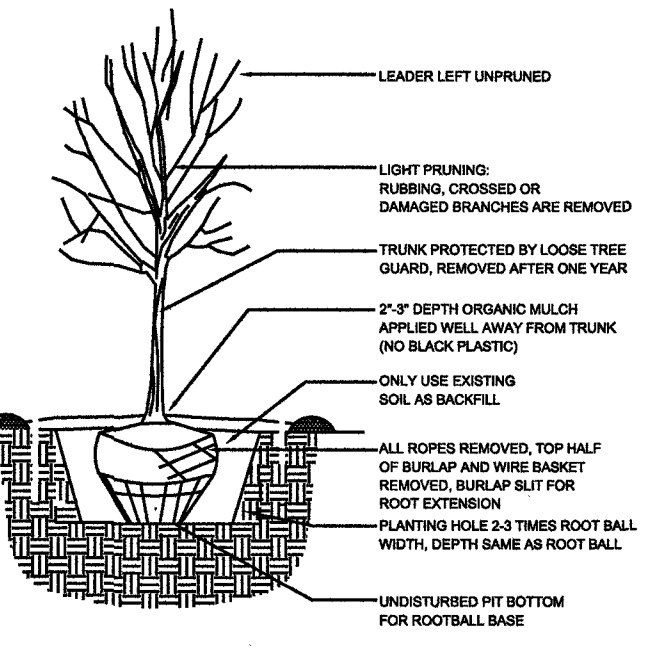
REQUIRED PARKING LOT TREES 1 PER 10 SPACES 43 SPACES/10 5  
 PROVIDED PARKING LOT TREES 5  
 TOTAL TREE REQUIRED/PROVIDED (2" cal or 6" ht.) 15/18

REQUIRED LANDSCAPE COVERAGE 75% LIVE VEGETATIVE MATERIAL (6,081 SF PROPOSED LANDSCAPE X 75%) 4,560 SF MIN.  
 PROVIDED GROUNDCOVER COVERAGE PERCENT GROUNDCOVER COVERAGE OF REQUIRED LANDSCAPE AREAS 75%

**NOTE**

MAINTENANCE OF LANDSCAPE (ONSITE AND WITHIN ROW) TO BE MAINTAINED BY PROPERTY OWNER  
 PLANTINGS TO BE WATERED BY AUTO. DRIP IRRIGATION SYSTEM WITH REDUCED PRESSURE BACKFLOW PREVENTER PER CITY OF ALBUQUERQUE AND CENTRALIZED COMPUTER IRRIGATION CONTROLLER SYSTEM. THE IRRIGATION SYSTEM SHALL BE DESIGNED TO AVOID OVER SPRAYING ONTO WALLS, BUILDINGS, FENCES, SIDEWALKS, ETC. IRRIGATION COMPONENTS SHALL BE CHECKED PERIODICALLY TO ENSURE MAXIMUM EFFICIENCY.  
 WATER MANAGEMENT IS THE SOLE RESPONSIBILITY OF THE PROPERTY OWNER  
 THIS PLAN IS TO COMPLY WITH C.O.A. LANDSCAPE AND WATER WASTE ORDINANCE 6-1-1. PLANTING RESTRICTIONS APPROACH  
 IT IS THE INTENT OF THIS PLAN TO PROVIDE MIN. 75% LIVE GROUNDCOVER OF LANDSCAPE AREAS AT MATURITY PER ORDINANCE 14-16-3-10 (SEE CALCULATIONS PROVIDED ABOVE)  
 LANDSCAPE AREAS TO BE MULCHED WITH GRAVEL MULCH AT 3" DEPTH OVER FILTER FABRIC  
 APPROVAL OF THE LANDSCAPE PLAN DOES NOT CONSTITUTE OR IMPLY COMPLIANCE WITH, OR EXEMPTION FROM, THE C.O.A. LANDSCAPE AND WATER WASTE ORDINANCE 6-1-1.  
 NO PARKING SPACE SHALL BE MORE THEN 100' FROM A TREE.  
 STREET TREES TO CONFORM TO STREET TREE ORDINANCE 6-6-2.  
 LANDSCAPE PLAN TO CONFORM TO ZONING REGULATIONS ORDINANCE 14-16-3-10.  
 LANDSCAPING AND SIGNING WILL NOT INTERFERE WITH CLEAR SIGHT REQUIREMENTS. THEREFORE, SIGNS, WALLS, TREES AND SHRUBBERY BETWEEN 3 AND 8 FEET TALL (AS MEASURED FROM THE GUTTER PAN) WILL NOT BE ALLOWED IN THIS AREA.

IRRIGATION SYSTEM: AN AUTOMATIC UNDERGROUND IRRIGATION SYSTEM WILL BE UTILIZED TO PROVIDE EVEN AND ADEQUATE WATER LEVELS TO ALL PLANT MATERIAL. WATER USE SHALL BE DONE IN SUCH A MANNER AS TO CONSERVE ITS USE AND PREVENT ANY AND ALL RUNOFF FROM LANDSCAPE MATERIALS. IRRIGATION SHALL BE RESTRICTED TO EARLY MORNING HOURS TO CONSERVE THIS LIMITED RESOURCE.  
 STREETSCAPE LANDSCAPING SHALL CONSIST PRIMARILY OF SHRUBS AND DECIDUOUS TREES IN A SETBACK AREA BETWEEN THE RIGHT-OF-WAY OF THE STREET AND THE FACE OF THE CURB OF AN ADJACENT PARKING AREA. CLEAR-SIGHT TRIANGLE REQUIREMENTS MUST BE MET.  
 TREES IN PROXIMITY OF DUMPSTER TO BE MAINTAINED TO ALLOW FOR TRUCK ACCESS WITHOUT DAMAGE TO TRUCK OR TREES  
 LANDSCAPE PLAN MUST COMPLY WITH THE COA WATER CONSERVATION ORDINANCE AND POLLEN ORDINANCE



Sheet Title:  
**Landscape Plan**  
 Sheet Number:  
**B2**