

Date: 12/19/2016

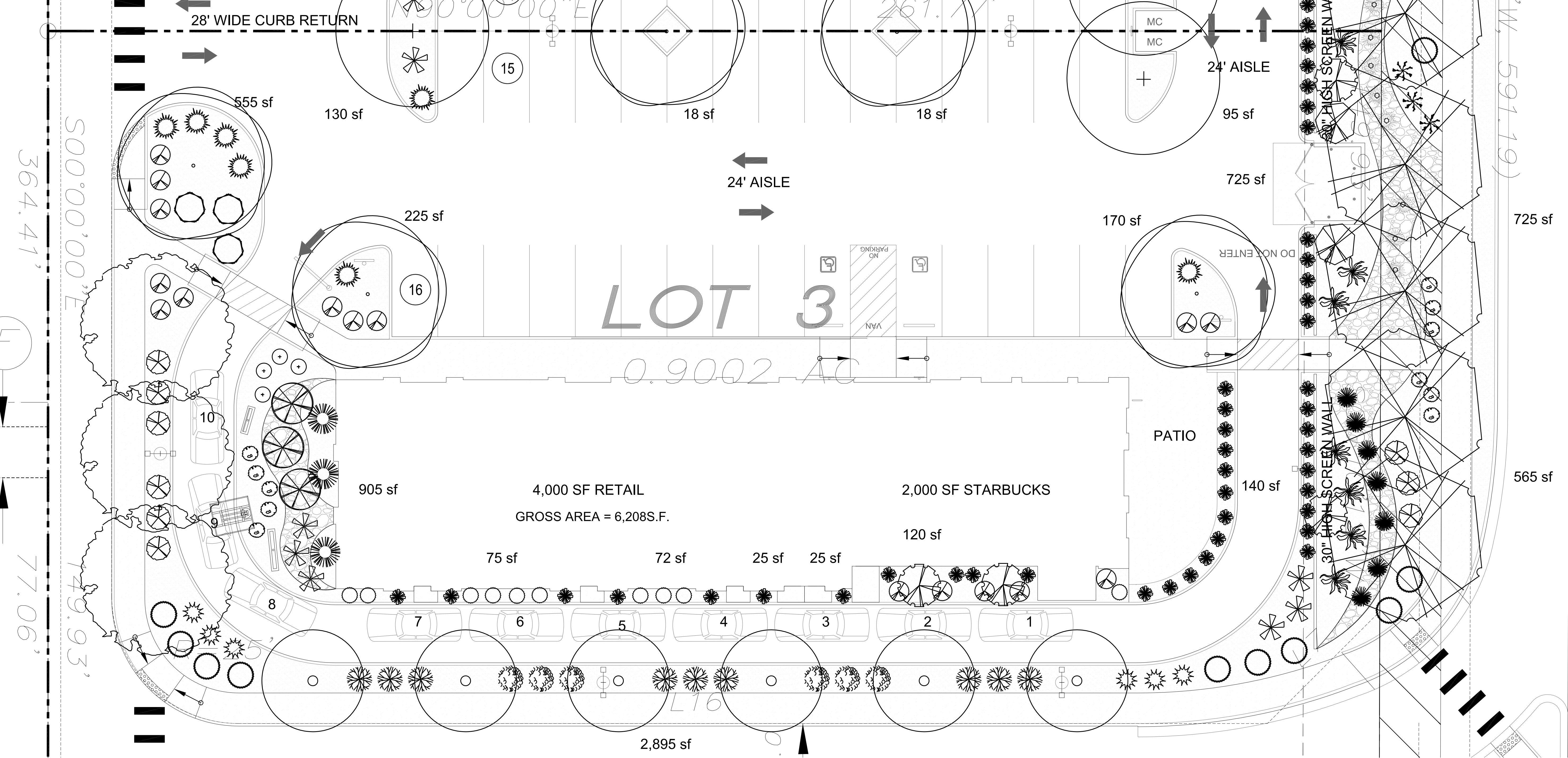
Revisions:

- ▲ 1/31/17
- ▲
- ▲
- ▲

Drawn by: jc

Reviewed by: jb

**Starbucks/Retail**  
**Coors Pavilion**  
 Albuquerque, New Mexico



**PLANT LEGEND/Starbucks**

Qty.	Symbol	Scientific Name	Common Name	Installed Size	Mature Height/Spread	Landscaping Coverage	Water Use	Drip Emitters
4		<i>Quercus buckleyi</i>	Texas Red Oak	2" B&B	40'/35'	50 sf=200 sf	Medium	6-2 gph
4		<i>Gleditsia triacanthos inermis</i>	Honeylocust	2" B&B	80'/80'	50 sf=200 sf	Medium	6-2 gph
3		<i>Pistacia chinensis</i>	Chinese Pistache	2" B&B	60'/60'	50 sf=150 sf	Medium	+6-2 gph
2		<i>Celtis occidentalis</i>	Hackberry	2" B&B	40'/40'	50 sf=100 sf	Medium	6-2 gph
6		<i>Pyrus dioica</i>	Flowering Pear	2" B&B	25'/15'	50 sf=300 sf	Medium	+6-2 gph
<b>Shrubs/Groundcovers</b>								
3		<i>Caesalpinia speciosa</i>	Bird of Paradise	5-Gal	8'/8'	64 sf=192 sf	Medium	2-2 gph
3		<i>Buddleia davidii</i>	Butterfly Bush	1-Gal	6'/6'	36 sf=108 sf	Medium	2-2 gph
6		<i>Caryopteris clandonensis</i>	Blue Mist	1-Gal	4'/4'	25 sf=150 sf	Medium	2-2 gph
2		<i>Vauquelinia californica</i>	Rosewood	5-Gal	10'/10'	100 sf=200 sf	Medium	2-2 gph
10		<i>Rhus aromatica</i>	Gro Low Sumac	5-Gal	2'/6'	36 sf=360 sf	Low +	2-2 gph
9		<i>Ericameria laricifolia</i>	'Aguirre' Turpentine Bush	5-Gal	3'/4'	25 sf=225 sf	Low	2-1 gph
7		<i>Yucca baccata</i>	Datil	5-Gal	3'/3'	27 sf=189 sf	Medium+	2-1 gph
4		<i>Salvia greggii</i>	Cherry Sage	1-Gal	3'/3'	15 sf=60 sf	Medium	2-1 gph
7		<i>Hesperaloe parviflora</i>	Red Yucca	5-Gal	3'/4'	30 sf=210 sf	Low	2-2 gph
7		<i>Juniperus sabiniana</i>	'Buffalo' Buffalo Juniper (female)	5-Gal	2'/6'	36 sf=252 sf	Low +	2-2 gph
7		<i>Dasyliroton sotoi</i>	Sotol	1-Gal	3'/3'	27 sf=189 sf	Medium	2-2 gph
9		<i>Prunus cistena</i>	Dwarf Red Leaf Plum	5-Gal	6'/6'	36 sf=324 sf	Medium	2-2 gph

7		<i>Rosmarinus officinalis</i>	Rosemary	5-Gal	6'/6'	36 sf=252 sf	Low +	2-2 gph
6		<i>Rosa rugosa</i>	Knockout Rose	5-Gal	3'/3'	15 sf=90 sf	Medium+	2-2 gph
4		<i>Lagerstroemia speciosa</i>	Crape Myrtle	5-Gal	15'/10'	100 sf=400 sf	Medium+	2-2 gph
11		<i>Nepeta catmint</i>	Catmint	1-Gal	1'/3'	6 sf=66 sf	Medium	2-2 gph
16		<i>Rhipidolobos hawthorn</i>	India Hawthorn	5-Gal	3'/3'	15 sf=240 sf	Medium	2-2 gph
10		<i>Lavandula angustifolia</i>	Lavender	1-Gal	3'/3'	12 sf=120 sf	Medium	2-2 gph

<b>Grasses</b>								
3		<i>Muhlenbergia capillaris</i>	Deer Grass	1-Gal	4'/4'	20 sf=60 sf	Low+	2-2 gph
3		<i>Panicum capillare</i>	Switch Grass	1-Gal	8'/6'	36 sf=108 sf	Medium	2-2 gph
42		<i>Calamagrostis canadensis</i>	Karl Foerster Grass	5-Gal	3'/2'	10 sf=420 sf	Medium	2-2 gph

Total Landscape Coverage=5,165 SF

**MATERIALS LEGEND**

- BROWN CRUSHER FINES
- 1/2" BLUE SAIZ GRAVEL

**IRRIGATION NOTE**

DRIP SYSTEM RUN CYCLES:  
 ESTABLISHMENT AND SUMMER:  
 1 HOUR/4 DAYS A WEEK  
 SPRING:  
 1 HOUR/2-3 DAYS A WEEK  
 FALL:  
 1 HOUR/2-3 DAYS A WEEK  
 WINTER:  
 1 HOUR/2 DAYS PER MONTH

**SITE DATA/Starbucks**

GROSS LOT AREA (.9002 ac.)	39,213 SF
LESS BUILDING(S)	6,208 SF
NET LOT AREA	33,005 SF

REQUIRED LANDSCAPE 15% OF NET LOT AREA	4,951 SF
PROPOSED LANDSCAPE PERCENT OF NET LOT AREA	6,176 SF
	18 %

HIGH WATER USE TURF MAX. 20% OF LANDSCAPE AREA	0 SF
PROPOSED HIGH WATER USE TURF PERCENT OF LANDSCAPE AREA	0 SF
	0 %

REQUIRED STREET TREES 1 PER 25 L.F. OF STREET FRONTAGE	8
PROVIDED STREET TREES	8

REQUIRED PARKING LOT TREES 1 PER 10 SPACES	4
31 SPACES/10 PROVIDED PARKING LOT TREES	4
TOTAL TREE REQUIRED/PROVIDED (2" cal or 6" ht.)	12/19

REQUIRED LANDSCAPE COVERAGE 75% LIVE VEGETATIVE MATERIAL (6,176 SF PROPOSED LANDSCAPE X 75%)	4,632 SF MIN.
PROVIDED GROUND COVER COVERAGE PERCENT GROUND COVER COVERAGE OF REQUIRED LANDSCAPE AREAS	5,165 SF
	79%

**NOTE**

MAINTENANCE OF LANDSCAPE (ONSITE AND WITHIN ROW) TO BE MAINTAINED BY PROPERTY OWNER

PLANTINGS TO BE WATERED BY AUTO. DRIP IRRIGATION SYSTEM WITH REDUCED PRESSURE BACKFLOW PREVENTER PER CITY OF ALBUQUERQUE

WATER MANAGEMENT IS THE SOLE RESPONSIBILITY OF THE PROPERTY OWNER

THIS PLAN IS TO COMPLY WITH C.O.A. LANDSCAPE AND WATER WASTE ORDINANCE 6-1-1. PLANTING RESTRICTIONS APPROACH

IT IS THE INTENT OF THIS PLAN TO PROVIDE MIN. 75% LIVE GROUND COVER OF LANDSCAPE AREAS AT MATURITY PER ORDINANCE 14-16-3-10 (SEE CALCULATIONS PROVIDED ABOVE)

LANDSCAPE AREAS TO BE MULCHED WITH GRAVEL MULCH AT 3" DEPTH OVER FILTER FABRIC

APPROVAL OF THE LANDSCAPE PLAN DOES NOT CONSTITUTE OR IMPLY COMPLIANCE WITH, OR EXEMPTION FROM, THE C.O.A. LANDSCAPE AND WATER WASTE ORDINANCE 6-1-1.

NO PARKING SPACE SHALL BE MORE THEN 100' FROM A TREE.

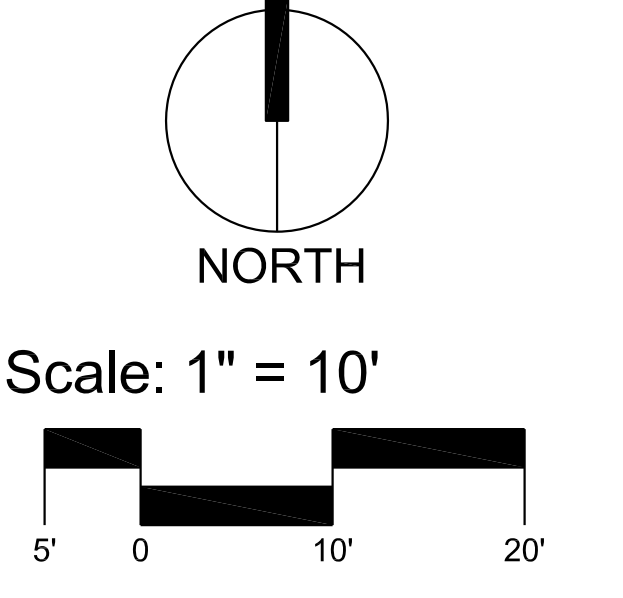
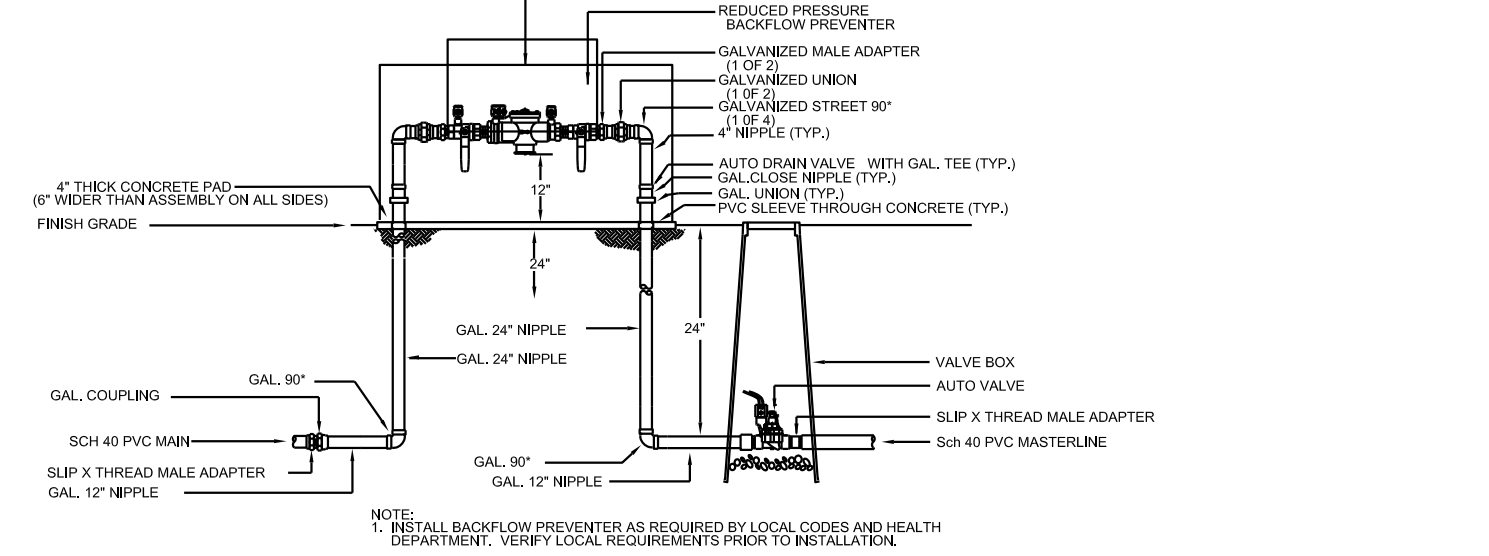
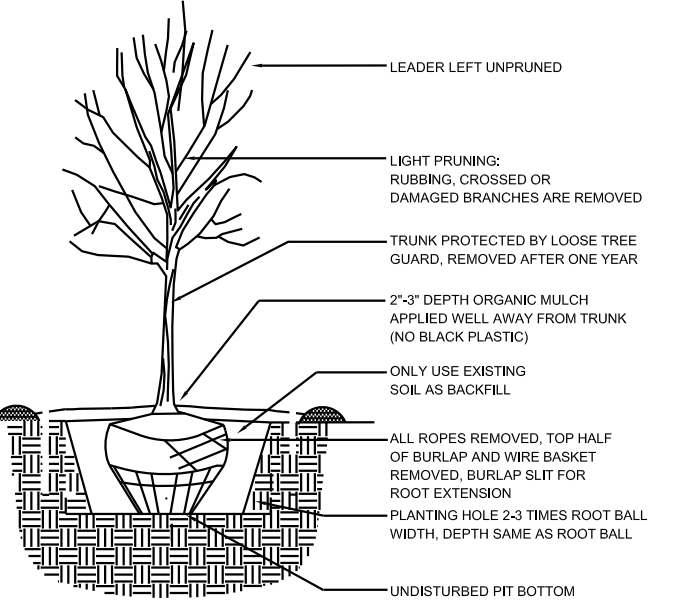
STREET TREES TO CONFORM TO STREET TREE ORDINANCE 6-6-2.

LANDSCAPE PLAN TO CONFORM TO ZONING REGULATIONS ORDINANCE 14-16-3-10.

LANDSCAPING AND SIGNING WILL NOT INTERFERE WITH CLEAR SIGHT REQUIREMENTS. THEREFORE, SIGNS, WALLS, TREES AND SHRUBBERY BETWEEN 3 AND 8 FEET TALL (AS MEASURED FROM THE GUTTER PAN) WILL NOT BE ALLOWED IN THIS AREA.

STREETSCAPE LANDSCAPING SHALL CONSIST PRIMARILY OF SHRUBS AND DECIDUOUS TREES IN A SETBACK AREA BETWEEN THE RIGHT-OF-WAY OF THE STREET AND THE FACE OF THE CURB OF AN ADJACENT PARKING AREA. CLEAR-SIGHT TRIANGLE REQUIREMENTS MUST BE MET.

TREES IN PROXIMITY OF DUMPSTER TO BE MAINTAINED TO ALLOW FOR TRUCK ACCESS WITHOUT DAMAGE TO TRUCK OR TREES



Sheet Title:  
**Landscape Plan**

Sheet Number:  
**B3**