

GENERAL SHEET NOTES

ARCHITECTURE / DESIGN / INSPIRATION

**DEKKER
PERICH
SABATINI**

500 S TAYLOR, STE 750 / LOBBY BOX 254
AMARILLO, TX 79101

806.376.8199 / DPSDESIGN.ORG

ARCHITECT

ENGINEER

PROJECT

COORS PAVILION
NW Corner of Coors Blvd & St. Joseph Dr.
Albuquerque, New Mexico 87120

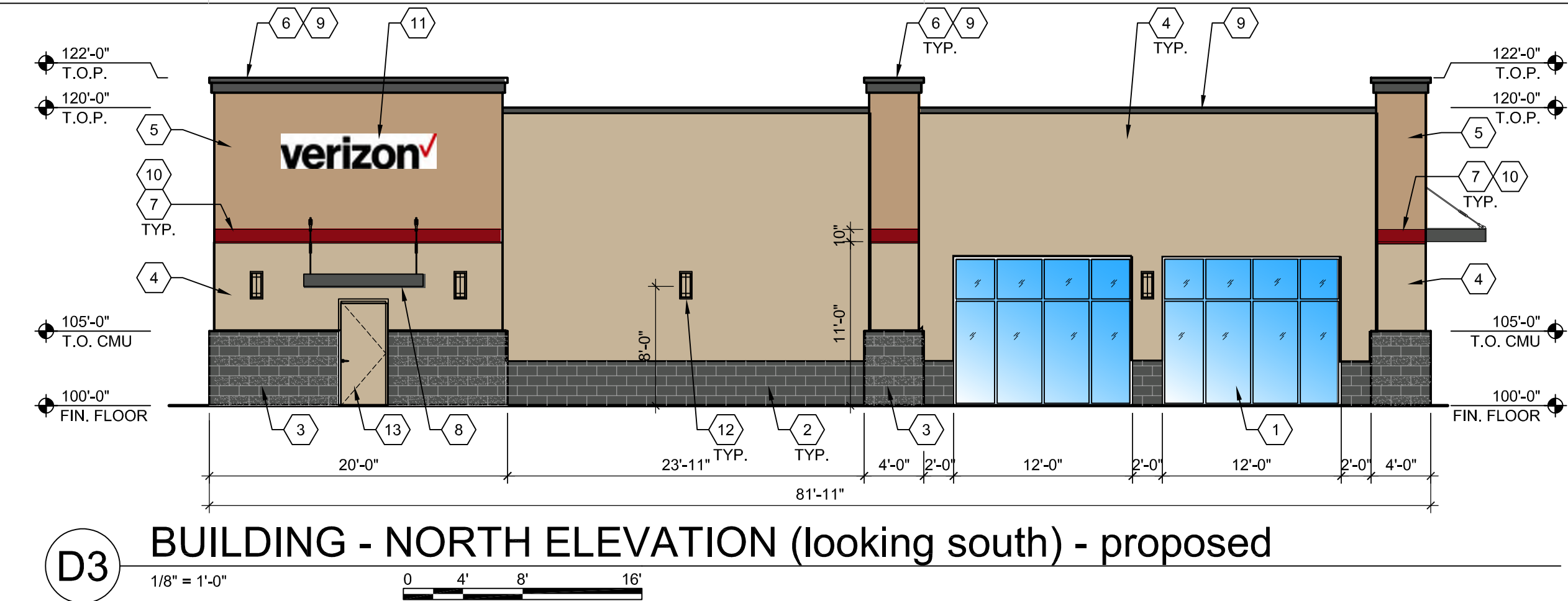
REVISIONS

△	
△	
△	
△	

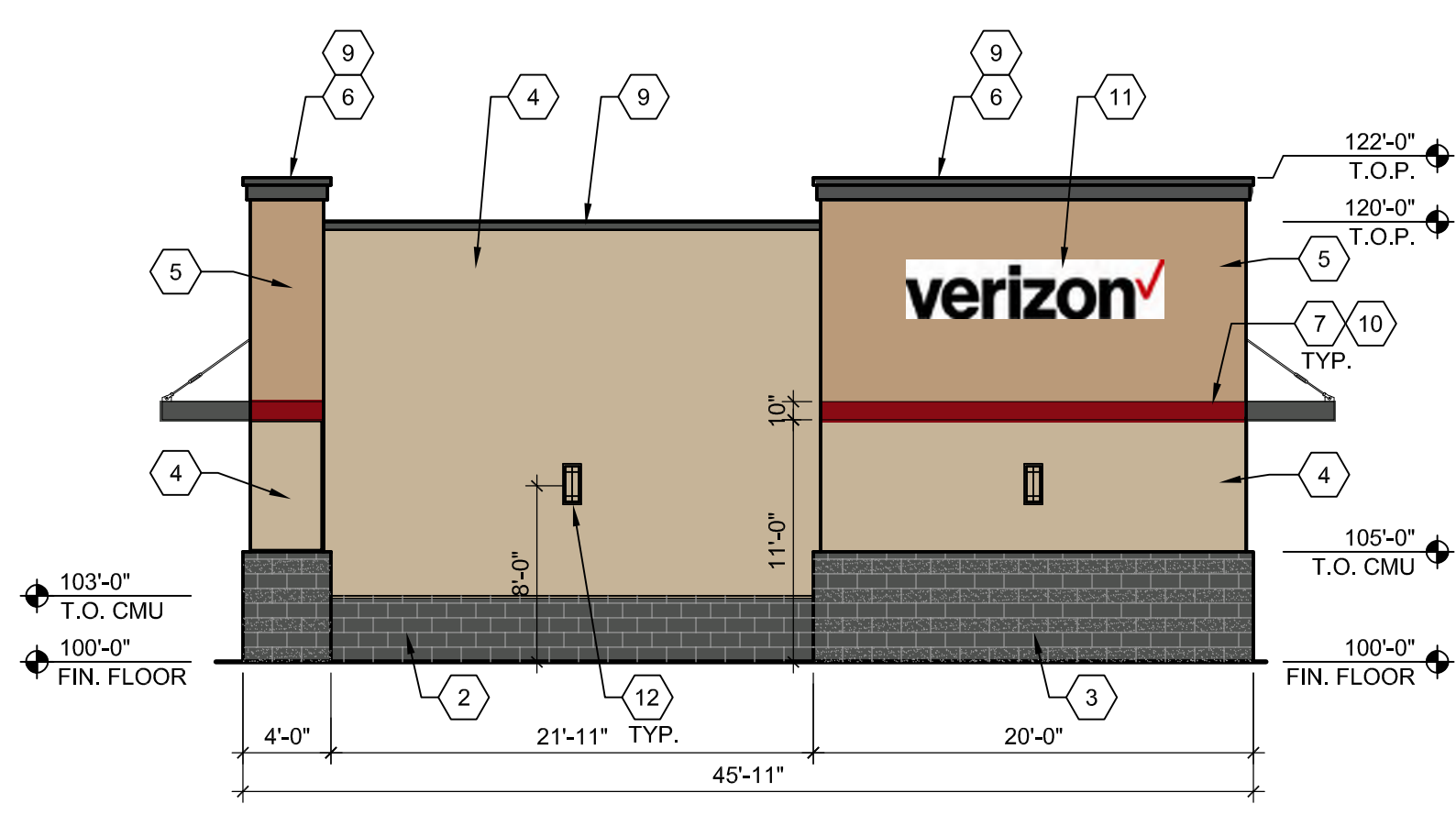
DRAWN BY	MB, AJ
REVIEWED BY	CG, MB
DATE	12/22/16
PROJECT NO.	
DRAWING NAME	

**SITE DEVELOPMENT
PLAN FOR
BUILDING PERMIT**

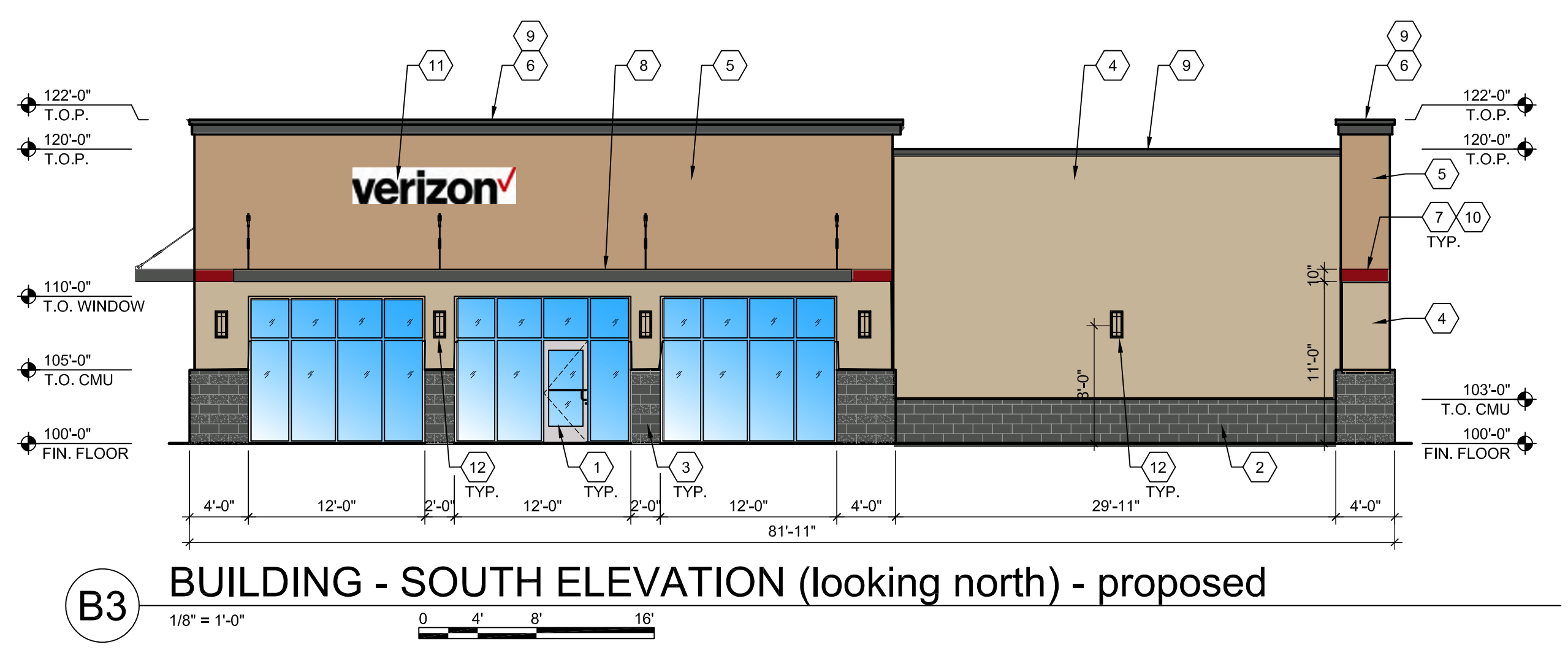
SHEET NO.
SPBP-5



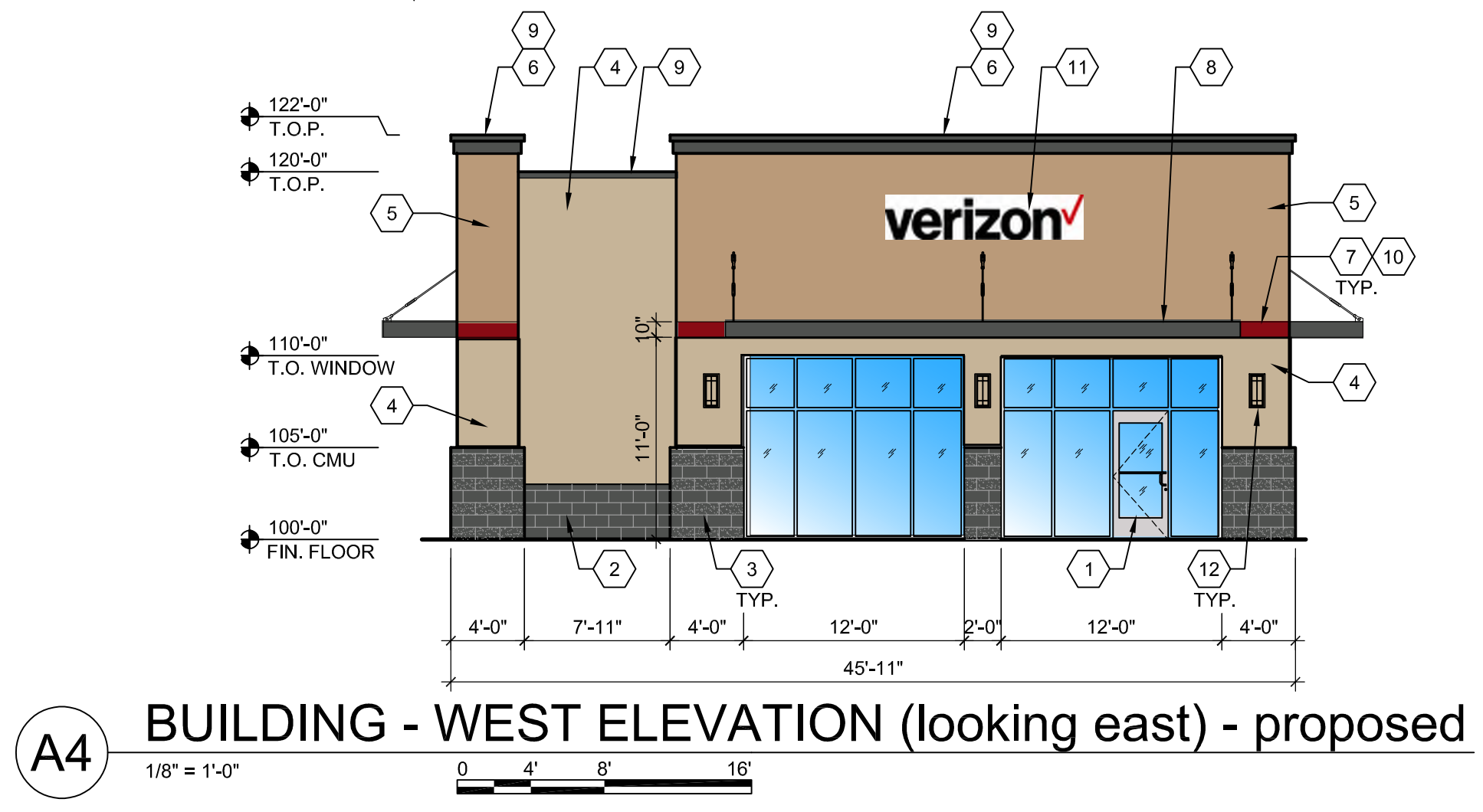
D3 BUILDING - NORTH ELEVATION (looking south) - proposed



C4 BUILDING - EAST ELEVATION (looking west) - proposed



B3 BUILDING - SOUTH ELEVATION (looking north) - proposed



A4 BUILDING - WEST ELEVATION (looking east) - proposed

7 SHEET KEYED NOTES

1. ALUMINUM STOREFRONT, COLOR: ANODIZED ALUMINUM.
2. CMU VENEER 1: SMOOTH-FACE, COLOR: DARK GREY.
3. CMU VENEER 2: SMOOTH-FACE and SPLIT-FACE, COLOR: DARK GREY.
4. EXTERIOR INSULATION AND FINISH SYSTEM (EIFS), COLOR 1: LIGHT GREY.
5. EXTERIOR INSULATION AND FINISH SYSTEM (EIFS), COLOR 2: MEDIUM GREY.
6. EXTERIOR INSULATION AND FINISH SYSTEM (EIFS), COLOR 3: DARK GREY.
7. EXTERIOR INSULATION AND FINISH SYSTEM (EIFS), COLOR 4: DARK RED.
8. STEEL AWNING, COLOR: MEDIUM GREY.
9. PRE-FINISHED METAL COPING, COLOR: DARK GREY.
10. CONTROL JOINT.
11. BUILDING SIGNAGE, SEE: GENERAL SHEET NOTES.
12. WALL SCONCE.
13. HOLLOW METAL DOOR, COLOR: TO MATCH ADJACENT WALL FINISH.

LEGEND

- CMU VENEER 1: SMOOTH-FACE
- COLOR: DARK GREY
- CMU VENEER 2: SMOOTH-FACE and SPLIT-FACE
- COLOR: DARK GREY
- EXTERIOR INSULATION AND FINISH SYSTEM (EIFS)
COLOR 1:
- EXTERIOR INSULATION AND FINISH SYSTEM (EIFS)
COLOR 2:
- EXTERIOR INSULATION AND FINISH SYSTEM (EIFS)
COLOR 3: DARK GREY
- EXTERIOR INSULATION AND FINISH SYSTEM (EIFS)
COLOR 4: DARK RED